

Loading Flow Check Data using the QA Transaction Generator

Download the QA Transaction Generator from <https://www.epa.gov/aqs/aqs-transaction-generator>

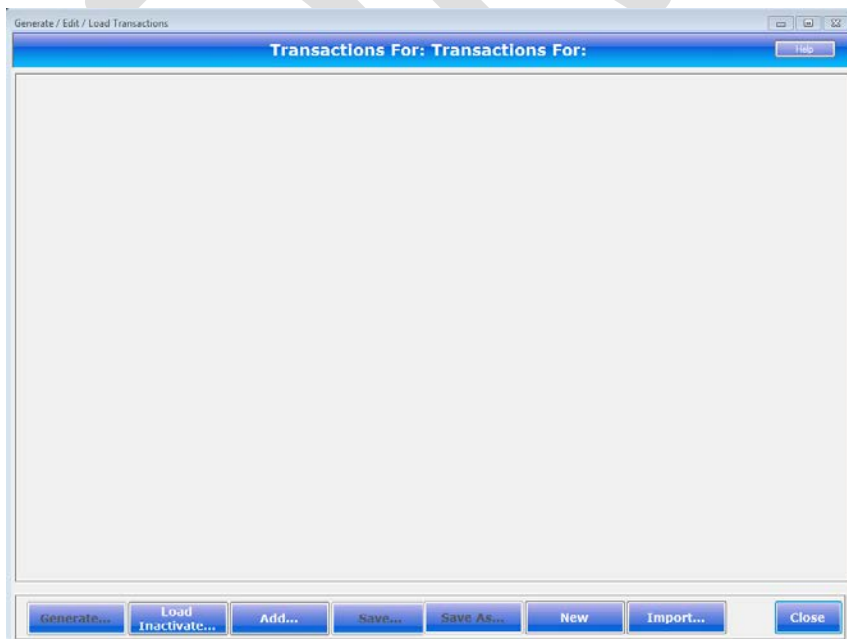


Open QA Transaction Generator by clicking on the icon.

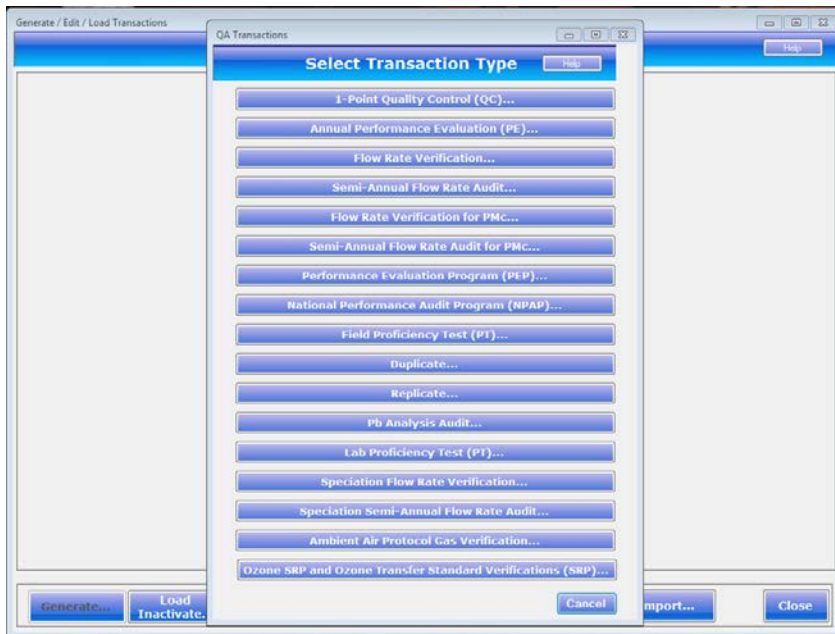
This screen will appear:



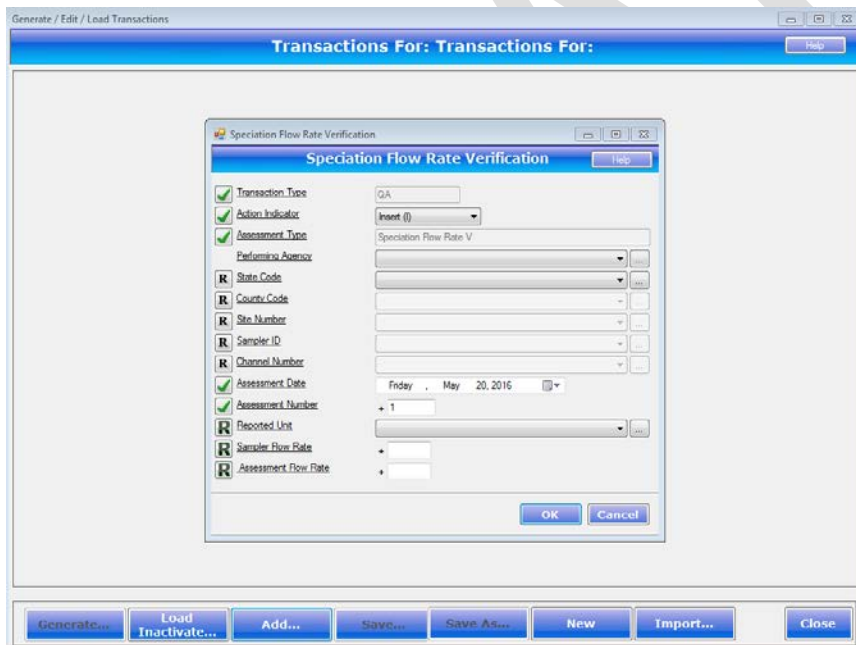
Select the **Transactions** button. The following screen should appear:





Select the **Add** button. The following screen should appear:



To enter CSN flow check data, select **Speciation Flow Rate Verification** or **Speciation Semi-Annual Flow Rate Audit**. The following screen should appear:



On this screen, the following indicators are used:

 or  Indicates a required element.

 Indicates the selected element is valid.

 Indicates the element is invalid but is currently acceptable.



Indicates the element is in error and requires correction to proceed.

Transaction Type, Action Indicator and Assessment Type should all have green checks to indicate that these options are selected. Transaction Type and Assessment Type cannot be modified, however the Action Indicator can be modified to select Delete, Insert, or Update. Leave the selection on Insert to add a new flow assessment transaction.

Enter CSN flow check data on this screen as follows:

Select **Performing Agency** from the dropdown menu, if applicable.

Select **State Code** from the drop down menu.

Select **County Code** from the drop down menu. The options will depend upon the State Code selected.

Select **Site Number** from the drop down menu. The options will depend upon the County Code selected.

Select **Sampler ID** from the drop down menu. The options will depend upon the Site ID selected.

Select **Channel Number** from the drop down menu. The options will depend upon the Sampler ID selected.

Enter the **Assessment Date**. The default value is the current date.

Enter the **Assessment Number**.

Select the **Reported Units** from the dropdown menu. The options include cubic feet/minute LC; cubic feet per minute STP; cubic meters per hour LC; cubic meters/minute LC; cubic meters/minute STP; Liters/minute LC; and liters/minute STP.

Enter the **Sampler Flow Rate**.

Enter the **Assessment Flow Rate**.

Select OK.

Repeat for collocated samplers, if applicable.