

Family Poaceae: *Tuctoria mucronata* (Solano Grass).

(1) Critical habitat units are depicted for Solano and Yolo counties, California, on the map below.

(2) The primary constituent elements of critical habitat for *Tuctoria mucronata* are the habitat components that provide:

(i) Vernal pools, swales, and other ephemeral wetlands and depressions of appropriate sizes and depths and the adjacent upland margins of these depressions that sustain *Tuctoria mucronata* germination, growth and reproduction, including but not limited to Northern Claypan vernal pools (Sawyer and Keeler-Wolf 1995) on saline-alkaline clay or silty clay in the Pescadero soil series that typically become inundated during winter rains, but are dry during the summer and do not necessarily fill with water every year; and

(ii) The associated watershed(s) and hydrologic features, including the pool basin, swales, and surrounding uplands (which may vary in extent depending on pool size and depth, soil type and depth, hardpan or claypan type and

extent, topography, and climate) that contribute to the filling and drying of the vernal pool or ephemeral wetland, and that maintain suitable periods of pool inundation, water quality, and soil moisture for *Tuctoria mucronata* germination, growth and reproduction, and dispersal, but not necessarily every year.

(3) Critical habitat does not include existing man-made features and structures, such as buildings, roads, aqueducts, railroads, airport runways and buildings, other paved areas, lawns, and other urban landscaped areas not containing one or more of the primary constituent elements.

(4) *Unit 1*: Yolo County, California.

(i) From USGS 1:24,000 quadrangle maps Davis and Saxon, California, land bounded by the following UTM 10 NAD 83 coordinates (E, N): 615400, 4260700; 614500, 4260700; 614500, 4261500; 614200, 4261500; 614200, 4261800; 614000, 4261800; 614000, 4262400; 615400, 4262400; returning to 615400, 4260700.

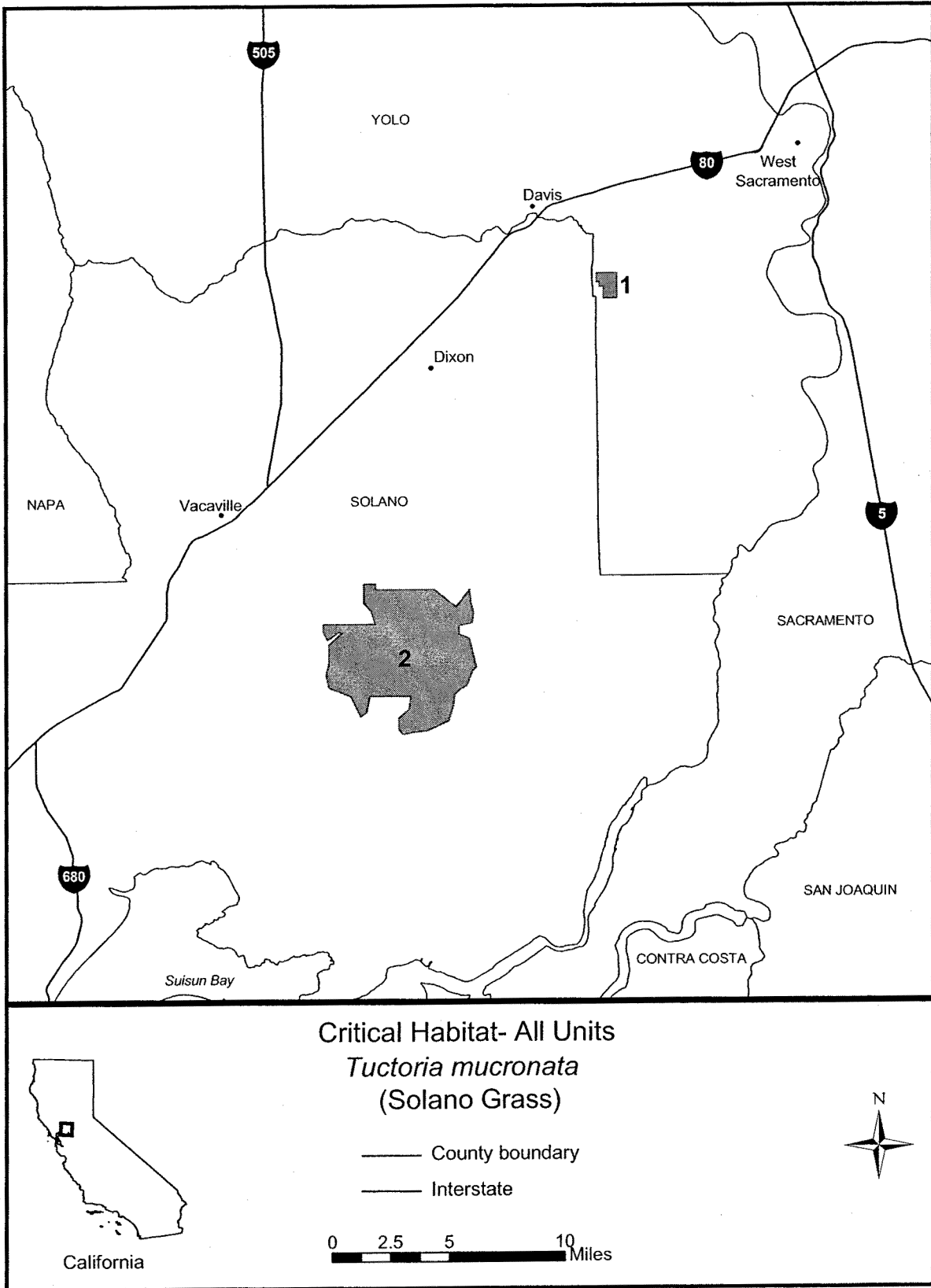
(5) *Unit 2*: Solano County, California.

(i) From USGS 1:24,000 quadrangle maps Birds Landing, Denverton, Dozier,

and Elmira, California, land bounded by the following UTM 10 NAD 83 coordinates (E, N): 600700, 4230600; 600400, 4230900; 600400, 4231700; 601100, 4232300; 601200, 4233200; 598400, 4233200; 598200, 4232100; 597800, 4231800; 597100, 4233200; 595600, 4233800; 595400, 4234700; 595600, 4235500; 595600, 4236800; 596500, 4237600; 596300, 4237700; 595500, 4237100; 595200, 4237700; 595200, 4238200; 598800, 4238200; 598500, 4239100; 598000, 4239700; 598000, 4241000; 598800, 4241000; 598800, 4240600; 600400, 4240600; 602800, 4240600; 604300, 4239400; 605200, 4240600; 605300, 4239700; 605500, 4239000; 605400, 4238300; 604500, 4238100; 604500, 4237500; 605200, 4237200; 605700, 4235200; 605400, 4234900; 605000, 4233900; 604600, 4233700; 604200, 4233300; 604100, 4232500; 603800, 4231500; 602300, 4230800; 601400, 4230700; returning to 600700, 4230600.

(6) Map follows of all critical habitat units for *Tuctoria mucronata* (Solano Grass).

BILLING CODE 4310-55-P



Family Scrophulariaceae: *Castilleja campestris* ssp. *succulenta* (Succulent Owl's Clover).

(1) Critical habitat units are depicted for San Joaquin, Sacramento, Stanislaus, Tuolumne, Merced, Mariposa, Madera and Fresno Counties, California, on the map below.

(2) The primary constituent elements of critical habitat for *Castilleja campestris* ssp. *succulenta* are the habitat components that provide:

(i) Vernal pools, swales, and other ephemeral wetlands and depressions of appropriate sizes and depths and the adjacent upland margins of these depressions that sustain *Castilleja campestris* ssp. *succulenta* germination, growth and reproduction, including but not limited to hardpan vernal pools on alluvial terraces and San Joaquin, Redding, Corning, Keyes, and Pentz soils series, among others, and northern basalt flow vernal pools on Hideaway soils series, that typically become inundated during winter rains, but are dry during the summer and do not necessarily fill with water every year; and

(ii) The associated watershed(s) and hydrologic features, including the pool basin, swales, and surrounding uplands (which may vary in extent depending on pool size and depth, soil type and depth, hardpan or claypan type and extent, topography, and climate) that contribute to the filling and drying of the vernal pool or ephemeral wetland, and that maintain suitable periods of pool inundation, water quality, and soil moisture for *Castilleja campestris* ssp. *succulenta* germination, growth and reproduction, and dispersal, but not necessarily every year.

(3) Critical habitat does not include existing man-made features and structures, such as buildings, roads, aqueducts, railroads, airport runways and buildings, other paved areas, lawns, and other urban landscaped areas not containing one or more of the primary constituent elements.

(4) *Unit 1*: San Joaquin and Sacramento Counties, California.

(i) From USGS 1:24,000 quadrangle maps Clay and Lockford, California, land bounded by the following UTM 10 NAD 83 coordinates (E, N): 653700, 4232600; 653600, 4232600; 653500, 4233600; 653600, 4234100; 654100, 4234800; 655100, 4234800; 655500, 4234500; 655900, 4234700; 657600, 4234700; 657900, 4235000; 658800, 4235200; 659000, 4234900; 660500, 4235300; 661000, 4235300; 661200, 4234900; 660700, 4234400; 660000, 4234300; 659600, 4233400; 656900, 4233400; 654100, 4233200; 654100, 4232700; returning to 653700, 4232600.

(5) *Unit 2*: Stanislaus and Tuolumne counties, California.

(i) From USGS 1:24,000 quadrangle maps Cooperstown, Keystone, Knights Ferry, La Grange, and Paulsell, California, land bounded by the following UTM 10 NAD 83 coordinates (E, N): 710900, 4168400;

710350.6875000 4168525; 710500, 4169100; 709300, 4169100; 709100, 4169500; 709100, 4169700; 708900, 4169700; 708800, 4169900; 708700, 4169900; 708600, 4169800; 708500, 4169900; 708400, 4170000; 708700, 4170200; 708800, 4170300; 708900, 4170400; 709100, 4170500; 709200, 4170600; 709400, 4170600; 709400, 4170800; 709300, 4170800; 709200, 4170900; 709100, 4170800; 708800, 4170700; 708800, 4170600; 708500, 4170500; 708400, 4170300; 708100, 4170200; 707900, 4170200; 707900, 4170300; 708200, 4170300; 708100, 4170500; 708200, 4170500; 708200, 4170600; 708000, 4170600; 708200, 4170800; 708200, 4170900; 708100, 4170900; 707900, 4170700; 707700, 4170700; 707700, 4170800; 707600, 4170900; 707400, 4170900; 707100, 4171100; 707100, 4171200; 707200, 4171300; 707300, 4171200; 707500, 4171300; 707800, 4171600; 707900, 4171600; 708100, 4171600; 708200, 4171700; 708100, 4171800; 708100, 4171900; 708300, 4171900; 708300, 4172100; 708400, 4172100; 708500, 4172200; 708500, 4172300; 708700, 4172400; 708800, 4172500; 708800, 4172600; 708700, 4172700; 708500, 4172700; 708400, 4172800; 708300, 4172700; 708200, 4172700; 708100, 4172600; 708000, 4172500; 707900, 4172500; 707800, 4172700; 707600, 4172600; 707400, 4172500; 707400, 4172600; 707200, 4172700; 707100, 4172300; 707000, 4172200; 706700, 4172200; 706700, 4172300; 706500, 4172300; 706400, 4172300; 706400, 4172400; 706200, 4172600; 706300, 4172700; 706400, 4172800; 706300, 4172800; 706200, 4172800; 706100, 4172900; 705900, 4173100; 705800, 4173300; 705800, 4173500; 706000, 4173800; 705900, 4173900; 705800, 4174100; 705700, 4174200; 705500, 4174200; 705400, 4174100; 705400, 4173700; 705300, 4173500; 705200, 4173200; 705100, 4174700; 705400, 4175400; 705000, 4175900; 705300, 4176300; 705700, 4176700; 705700, 4177000; 705700, 4177700; 705200, 4177900; 705000, 4178100; 705400, 4178900; 706200, 4178400; 706600, 4177600; 707200, 4177300; 707300, 4176800; 706800, 4176200; 706900, 4175800; 707600, 4175800; 708000, 4176500; 708500, 4176400; 709800, 4176600; 710200, 4176200; 710700, 4176600; 711200,

4176900; 711500, 4177100; 711600, 4178100; 711700, 4178700; 710600, 4178800; 710300, 4179200; 709900, 4179500; 709500, 4179600; 709100, 4180800; 709200, 4182200; 709700, 4182700; 710300, 4182900; 711400, 4182100; 712400, 4182100; 713200, 4182000; 714100, 4182600; 715100, 4182600; 715500, 4183400; 715800, 4183400; 716000, 4182700; 716900, 4182700; 717100, 4182500; 717100, 4182000; 716900, 4181300; 717200, 4180900; 717200, 4180600; 716900, 4179900; 717700, 4180100; 718500, 4180000; 718700, 4179200; 719300, 4178700; 719700, 4177600; 720300, 4177700; 720700, 4177700; 720800, 4176400; 720500, 4175200; 719500, 4174100; 720700, 4173500; 720700, 4172500; 719800, 4171900; 717700, 4170900; 717300, 4170700; 716800, 4171000; 716700, 4171800; 716500, 4171800; 716200, 4170900; 715500, 4170500; 714000, 4169800; 712500, 4168900; returning to 710900, 4168400.

(6) *Subunit 3A*: Merced and Mariposa counties, California.

(i) From USGS 1:24,000 quadrangle maps Merced Falls and Snelling, California, land bounded by the following UTM 10 NAD 83 coordinates (E, N): 722500, 4155000; 722300, 4155000; 722300, 4157400; 724200, 4157400; 724100, 4160000; 724400, 4160600; 730600, 4160700; 730500, 4162200; 730800, 4162200; 731000, 4162100; 731400, 4162100; 731600, 4162500; 731800, 4162500; 731900, 4162400; 732100, 4162400; 732200, 4162500; 732700, 4162700; 733000, 4162600; 733600, 4162100; 733700, 4161500; 733600, 4161000; 734600, 4160400; 734800, 4160200; 734800, 4159500; 734400, 4158700; 734300, 4158100; 734500, 4157900; 734700, 4158000; 734900, 4158300; 735000, 4158800; 735500, 4158800; 735700, 4158600; 735600, 4158100; 736200, 4157500; 736800, 4157300; 736900, 4157100; 736900, 4156500; 736300, 4156500; 736000, 4156300; 735500, 4156300; 734100, 4156900; 733400, 4157100; 731700, 4156900; 730900, 4156500; 728900, 4156600; 727100, 4156700; 726900, 4156400; 725900, 4156400; 723900, 4155300; 723300, 4155400; returning to 722500, 4155000.

(7) *Subunit 3B*: Merced and Mariposa counties, California.

(i) From USGS 1:24,000 quadrangle maps Atwater, Haystack Mtn., Indian Gulch, Le Grand, Merced, Merced Falls, Owens Reservoir, Plainsburg, Planada, Snelling, Winton, and Yosemite Lake, California, land bounded by the following UTM 10 NAD 83 coordinates (E, N): 743600, 4125000; 743600, 4127000; 742700, 4127000; 742600, 4126600; 742300, 4126300; 741700,

4126300; 741200, 4126800; 741200, 4128600; 740400, 4128600; 740400, 4130300; 739000, 4130300; 739000, 4130600; 738400, 4131100; 737500, 4131200; 737800, 4131700; 737700, 4132600; 737700, 4132900; 737100, 4132900; 737100, 4134200; 736700, 4134200; 736100, 4133900; 735700, 4133300; 734700, 4133300; 734700, 4133700; 734100, 4133900; 733100, 4133900; 733100, 4134600; 732700, 4134600; 732600, 4135000; 732300, 4135500; 730300, 4135400; 729900, 4135700; 729900, 4136500; 726500, 4136500; 726400, 4136100; 725900, 4136100; 725900, 4135300; 725600, 4135100; 725500, 4135100; 725300, 4135500; 725100, 4135400; 725000, 4135400; 725000, 4135600; 724800, 4135700; 724600, 4135700; 724600, 4134700; 724200, 4134700; 724200, 4135500; 723400, 4135500; 723400, 4135600; 722800, 4135600; 722800, 4135000; 722600, 4135000; 722600, 4134700; 722500, 4134700; 722200, 4137900; 722800, 4137900; 722800, 4139300; 721900, 4139300; 721900, 4140200; 721000, 4140200; 721000, 4140900; 717800, 4140900; 717800, 4137700; 717100, 4137700; 717000, 4138200; 714500, 4140900; 714100, 4141300; 714100, 4142200; 713600, 4142400; 713200, 4143000; 713000, 4143900; 713100, 4144300; 713700, 4144600; 714500, 4145300; 714500, 4145700; 715800, 4145800; 717000, 4145800; 718000, 4145400; 718200, 4145900; 718200, 4147600; 719700, 4148400; 720600, 4148600; 720600, 4149200; 719600, 4149200; 719600, 4149800; 720300, 4149800; 721300, 4150700; 721700, 4150700; 724400, 4153300; 725000, 4153500; 725500, 4154200; 725800, 4154800; 727200, 4155900; 727800, 4155900; 728500, 4155600; 730200, 4155600; 731600, 4155500; 732400, 4155400; 732600, 4155200; 733200, 4154700; 734100, 4154900; 734600, 4154800; 735600, 4156000; 735900, 4156000; 737100, 4155400; 737800, 4155000; 738200, 4154200; 738300, 4153300; 739000, 4152800; 739100, 4152200; 740200, 4151800; 740800, 4151500; 740800, 4150300; 741100, 4149900; 741700, 4149400; 742100, 4148500; 742100, 4147100; 743400, 4146100; 744000, 4145600; 744400, 4144600; 744300, 4143900; 743900, 4142700; 744000, 4142000; 744200, 4141700; 745500, 4140300; 746100, 4139500; 746800, 4138500; 747700, 4137700; 748500, 4135800; 748700, 4135100; 749500, 4134000; 750700, 4131700; 751600, 4130500; 752000, 4130200; thence east to y-coordinate 4130200 on Mariposa Creek; thence southwest along Mariposa Creek to y-coordinate 4125000; thence

west to the point of beginning at 743600, 4125000.

(8) *Unit 4*: Madera, Merced and Fresno Counties, California.

(i) From USGS 1:24,000 quadrangle maps Daulton, Friant, Gregg, Kismet, Lanes Bridge, Little Table Mtn., Millerton Lake West, Raymond, and Raynor Creek, California, land bounded by the following UTM 10 NAD 83 coordinates (E, N): 766600, 4106700; 766500, 4107800; 765200, 4107800; 764700, 4108100; 764100, 4109200; 763400, 4109300; 763200, 4109800; 761500, 4109800; 761500, 4111300; 759800, 4111300; 759800, 4112500; 759300, 4112500; 759200, 4112300; 758300, 4112300; 758300, 4112900; 756600, 4112900; 756500, 4117000; thence north to x-coordinate 756500 on Ash Slough; thence northeast along Ash Slough to the Chowchilla River; thence northeast along the Chowchilla River to y-coordinate 41194000; thence east to 762300, 4119400; 762700, 4118600; 762800, 4118000; 763300, 4117200; 763500, 4117600; 763700, 4117600; 764100, 4117300; 764200, 4116800; 764500, 4115900; 765400, 4115900; 765400, 4116400; 766100, 4116400; 766100, 4115800; 765900, 4114300; 766300, 4114200; thence northeast to UTM zone 11, land bounded by the following UTM 11 NAD 83 coordinates (E, N): 233900, 4114300; 234200, 4114300; 234200, 4113900; 234300, 4112700; 234900, 4112700; 235500, 4112900; 235700, 4112600; 235700, 4111500; 236200, 4111800; 236400, 4111800; 236800, 4111300; 236400, 4110800; 236400, 4109500; 237000, 4108700; 237600, 4108600; 238400, 4109300; 241300, 4109300; 242100, 4108700; 242200, 4109300; 241100, 4110700; 241100, 4111300; 241500, 4111300; 242000, 4110400; 243000, 4110300; 243000, 4109800; 245200, 4109700; 245900, 4108600; 247600, 4107500; 248000, 4106400; 248000, 4105900; 247400, 4105400; 247400, 4105200; 249100, 4104400; 251600, 4103800; 251900, 4103300; 251900, 4102600; 252300, 4102200; 252300, 4101400; 252900, 4101000; 253700, 4101600; 254500, 4101600; 255700, 4102000; 257800, 4102000; 258900, 4101100; 259000, 4098800; 259200, 4098400; 259200, 4098000; 258200, 4096900; 257400, 4096300; 256600, 4095600; 256200, 4095100; 255900, 4093800; 255700, 4092600; 255900, 4092200; 255900, 4092000; 255400, 4091700; 254600, 4090800; 253800, 4090400; 253300, 4089700; 252700, 4089000; 252500, 4088000; 251500, 4087100; 251500, 4087100; 251100, 4089300; 251200, 4092200; 250600, 4092200; 250600, 4093000; 251200, 4093500; 251300,

4094900; 250500, 4094900; 250400, 4092900; 245500, 4093000; 242300, 4093100; 242300, 4095000; 242500, 4095100; 244000, 4095000; 244000, 4096700; 244800, 4096600; 244900, 4098200; 245700, 4098200; 245700, 4099800; 242500, 4100000; 242400, 4095200; 242300, 4095200; 239500, 4095200; 239600, 4098400; 239700, 4100000; 240100, 4100000; 240200, 4100200; 240200, 4100400; 240200, 4100600; 240400, 4100700; 240600, 4100900; 240600, 4101200; 239700, 4102100; 239700, 4102200; 239900, 4102500; 239900, 4102700; 239800, 4102800; 239800, 4103000; 240000, 4103600; 240000, 4103900; 240700, 4104400; 241200, 4105300; 241200, 4106300; 240100, 4105200; 238900, 4104300; 238400, 4104100; 237100, 4104200; 237100, 4105700; 235500, 4105800; 235500, 4106600; 233200, 4106700; thence west to UTM zone 10 to the point of beginning at UTM 10 NAD 83 coordinates 766600, 4106700.

(9) *Unit 5*: Fresno County, California.

(i) From USGS 1:24,000 quadrangle maps Academy, Clovis, Friant, and Round Mountain, California, land bounded by the following UTM 11 NAD 83 coordinates (E, N): 273000, 4076600; 271300, 4076700; 271400, 4076900; 271700, 4077100; 271800, 4077300; 271800, 4077500; 271500, 4077700; 271100, 4077700; 271100, 4078200; 271300, 4078400; 271600, 4078900; 271800, 4079100; 271900, 4079800; 271100, 4079900; 267900, 4080000; 266300, 4080000; 266300, 4080400; 266500, 4080500; 266500, 4080700; 266300, 4080800; 266300, 4081700; 265500, 4081800; 264000, 4081800; 265900, 4083100; 265900, 4083300; 263200, 4083300; 263100, 4082700; 262300, 4082700; 262300, 4083300; 261500, 4083400; 261500, 4083800; 260900, 4083800; 260900, 4084300; 261100, 4084300; 261100, 4084400; 260700, 4084700; 260700, 4085100; 260900, 4085300; 262100, 4085800; 262200, 4085900; 262200, 4086200; 262800, 4086200; 262600, 4086600; 262100, 4087000; 262100, 4087300; 262400, 4087500; 262400, 4088200; 261100, 4088200; 261100, 4087400; 260200, 4087400; 260100, 4086600; 259200, 4086600; 259200, 4087700; 259600, 4087500; 260000, 4087500; 260100, 4087900; 259700, 4088100; 258500, 4088200; 258000, 4088300; 258000, 4089100; 258500, 4089300; 258500, 4089800; 258300, 4089800; 257700, 4089200; 256600, 4089200; 256600, 4090200; 256800, 4090800; 256900, 4092700; 257200, 4094300; 257300, 4095500; 258600, 4096700; 258900, 4096700; 259600, 4096700; 259600, 4094700; 260300, 4094700; 260300, 4093300; 259400, 4091700;

260800, 4091700; 262200, 4091100;
262900, 4091100; 262900, 4090400;
263200, 4089800; 263100, 4089400;
264700, 4088700; 265000, 4087900;
265300, 4087600; 265900, 4087600;
265900, 4086800; 267000, 4086800;
267600, 4087000; 267800, 4086500;
267200, 4085500; 267400, 4085100;
268100, 4085300; 268300, 4085800;
269100, 4085800; 269800, 4085400;
270300, 4084900; 271100, 4084800;
271900, 4085100; 272200, 4085600;
272800, 4086200; 273000, 4087300;
273300, 4087700; 273200, 4088500;
273200, 4089600; 274700, 4089600;
275400, 4090000; 275600, 4090500;
275900, 4090800; 276500, 4090900;
277100, 4090900; 277100, 4090200;
276100, 4088900; 276100, 4087900;
276000, 4087500; 275400, 4087200;
275100, 4086600; 274900, 4086000;
274400, 4085500; 274000, 4084900;
273400, 4084400; 273400, 4083800;
273600, 4083400; 273600, 4083000;
272900, 4082900; 272800, 4082200;
272800, 4081400; 273000, 4080800;
273200, 4080500; 273500, 4080100;
273700, 4079700; 273800, 4079100;

274200, 4078600; 274300, 4078100;
273300, 4078100; 273300, 4077100;
returning to 273000, 4076600.

(10) *Subunit 6A*: Fresno County, California.

(i) From USGS 1:24,000 quadrangle maps Academy and Millerton Lake East, California, land bounded by the following UTM 11 NAD 83 coordinates (E, N): 267300, 4097300; 266900, 4097300; 267000, 4097600; 267800, 4098300; 268100, 4098700; 268100, 4098900; 268000, 4099100; 267400, 4099800; 267400, 4100300; 267700, 4100800; 268100, 4101400; 268600, 4101400; 269100, 4101100; 269600, 4101100; 269800, 4101300; 269900, 4101500; 269600, 4102200; 269200, 4102400; 268600, 4102800; 268700, 4103800; 269100, 4103800; 269600, 4103100; 270200, 4103500; 270300, 4103500; 270700, 4102500; 270500, 4102400; 270300, 4102200; 270300, 4101900; 270500, 4101500; 270600, 4101100; 270500, 4101000; 270200, 4100700; 269400, 4100500; 268300, 4100500; 268100, 4100300; 268100, 4100100; 268400, 4099800; 268600, 4099500; 268700, 4099200; 268700,

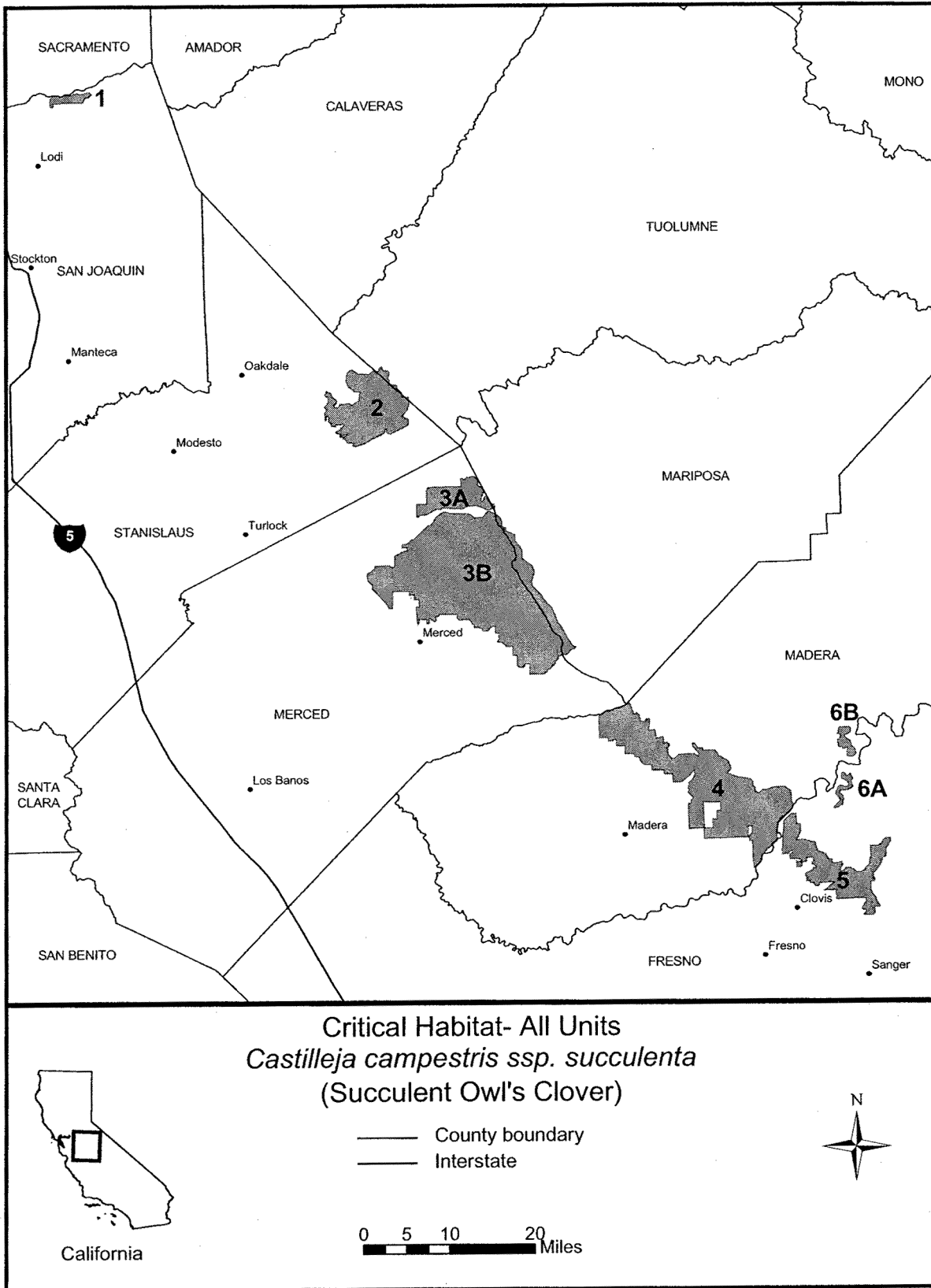
4098900; 268600, 4098300; 268500, 4098100; 268400, 4097800; 268100, 4097600; 267800, 4097400; returning to 267300, 4097300.

(11) *Subunit 6B*: Madera County, California.

(i) From USGS 1:24,000 quadrangle maps Millerton Lake East and North Fork, California, land bounded by the following UTM 11 NAD 83 coordinates (E, N): 271200, 4106800; 270200, 4106800; 269900, 4107000; 269900, 4107600; 270100, 4108600; 269300, 4108300; 269000, 4108700; 268500, 4108700; 268300, 4110000; 268800, 4110400; 268900, 4111000; 268300, 4111300; 268500, 4111500; 268600, 4112300; 268800, 4112400; 270600, 4112400; 270800, 4112100; 270700, 4111300; 269600, 4110800; 269700, 4110500; 270000, 4110200; 270600, 4109700; 270800, 4108800; 271300, 4108400; 271500, 4107800; 271600, 4107300; returning to 271200, 4106800.

(12) Map follows of all critical habitat units for *Castilleja campestris* ssp. *succulenta* (Succulent Owl's Clover).

BILLING CODE 4310-55-P



Dated: September 6, 2002.

Craig Manson,

*Assistant Secretary for Fish and Wildlife and
Parks.*

[FR Doc. 02-23241 Filed 9-23-02; 8:45 am]

BILLING CODE 4310-55-C