

United States  
Department of  
Agriculture

Natural  
Resources  
Conservation  
Service



# OKLAHOMA Personnel Directory

September 2016

# OKLAHOMA PERSONNEL DIRECTORY

EEO Statement  
(Revised July 2005)

The U.S. Department of Agriculture (USDA) prohibits discrimination in all its programs and activities on the basis of race, color, national origin, age, disability, and where applicable, sex, marital status, familial status, parental status, religion, sexual orientation, genetic information, political beliefs, reprisal, or because all or a part of an individual's income is derived from any public assistance program. (Not all prohibited bases apply to all programs.) Persons with disabilities who require alternative means for communication of program information (Braille, large print, audiotape, etc.) should contact USDA's TARGET Center at (202) 720-2600 (voice and TDD). To file a complaint of discrimination write to USDA, Director, Office of Civil Rights, 1400 Independence Avenue, S.W., Washington, D.C. 20250-9410 or call (800) 795-3272 (voice) or (202) 720-6382 (TDD). USDA is an equal opportunity provider and employer.

---

# OKLAHOMA PERSONNEL DIRECTORY

## Table of Contents

EEO Statement.....	ii
Table of Contents .....	iii
Directory Content.....	iv
State Office.....	1
USDA / OCIO Information Technology Services – Oklahoma Staff .....	8
Field Service Centers and Conservation District Offices .....	10
Administrative and Technical Offices .....	39
Soil Survey Offices .....	43
Watershed Construction Offices .....	44
Tribal Liaison Offices .....	46
Appendix A - Organization Chart .....	47
Appendix B - Administrative Map .....	48
Appendix C - Order of Succession.....	49
Appendix D - Boards and Committees .....	50
Appendix E - Quick Reference.....	52
Index.....	54

# **OKLAHOMA PERSONNEL DIRECTORY**

## Directory Content

While every reasonable effort has been made to ensure the correctness of information contained in this document, errors will inevitably occur.

If any errors are noted you should mark the correction on a copy of the affected page and submit it via FAX to 405-742-1201, attention Sarah Hasenmyer.

# OKLAHOMA PERSONNEL DIRECTORY

## State Office

**United States Department of Agriculture** 405-742-1204 Telephone  
**Natural Resources Conservation Service, State Office** 405-742-1007 TTD  
**100 USDA Suite 206** 405-742-1201 FAX  
**Stillwater, OK 74074-2655** 405-742-1214 FAX - Confidential Material

### Staff /

Personnel	Title	Telephone
<b>State Conservationists Staff</b>		
O'Neill, Gary	State Conservationist	405-742-1204 405-742-1126 FAX
Fitzpatrick, Connie L.	Secretary to State Conservationist	405-742-1204 405-556-4140 Mobile
Crouch, Carol V.	State Tribal Liaison	405-742-1203 405-612-9331 Mobile
Zetterberg, Richard D.	Assistant State Conservationist (Programs)	405-742-1236 405-334-1342 Mobile 405-742-1288 FAX
Wood II, James D.	Assistant State Conservationist (Mgmt & Strategy)	405-742-1277 405-385-1103 Mobile
Guerrero, Gilbert F.	Assistant State Conservationist (Outreach / Civil Rights)	405-742-1207 405-385-1103 Mobile
Burns April D.	Acting Assistant State Conservationist (Water Resources)	405-742-1284 405-334-2924 Mobile
Riley, Stacy M.	Assistant State Conservationist (Field Operations) for Zone 1	405-742-1215 405-334-2928 Mobile
Kacir, Richard "Chad"	Assistant State Conservationist (Field Operations) for Zone 2	405-742-1216 405-385-3032 Mobile
Hungerford, David M.	Assistant State Conservationist (Field Operations) for Zone 3	405-742-1243 405-334-2932 Mobile

# OKLAHOMA PERSONNEL DIRECTORY

## State Office (Cont'd)

Staff / Personnel	Title	Telephone
----------------------	-------	-----------

---

### Administrative Staff (Teams)

#### Financial Management

Cole, Gerry L.	Accounts Receivables	405-742-1217
Crane, Cara	Financial Administration	405-742-1237
Veselak, Sherrye M.	Accounts Payable	405-742-1285
		405-742-1129 FAX

#### Human Resources

Garabedian, Linda D.	Staffing	405-742-1210
Goodwin, Babette B.	Performance & Compensation	405-742-1211
Abrahamsen, Kevin D.	Benefit Services	405-742-1212
		405-742-1214 FAX

#### Management Services

Goforth, Sharla K.	Contracting Services	405-742-1231
Jensen, Janette M.	Grants & Agreements	405-742-1213
Neal, Birdie D.	Contracting Services	405-742-1225
		405-742-1295 FAX

---

### Ecological Sciences and Conservation Planning Staff

Glasgow, Steven J.	State Resource Conservationist	405-742-1235
		405-269-2128 Mobile
Hickman, Rebecca L.	Secretary	405-742-1233
Buford, Joe D.	Resource Conservationist	405-742-1282
Reavis, Brandon L.	State Rangeland Mgmt Specialist	405-742-1241
Sams, Michael	Biologist	405-742-1239
Stone, Caleb J.	Agronomist	405-742-1267
Janzen, Mark	Plant Materials Specialist	785 823-4595
Headquartered at:	760 South Broadway Salina, KS 67401-4642	

---

## OKLAHOMA PERSONNEL DIRECTORY

### State Office (Cont'd)

Staff / Personnel	Title	Telephone
<b>Engineering Staff</b>		
Stoner, J. Chris	State Conservation Engineer	405-742-1260 405-334-2926 Mobile
Brandt, Kim	Secretary	405-742-1256
Cosyleon, Severo G.	Design Staff Head	405-742-1270
Vacant	Civil Engineering Technician	405-742-1266
Vacant	Civil Engineer	405-742-1257
Vacant	Design Engineer	405-742-1269
Glasgow, Valerie G.	Design Engineer	405-742-1112
McClintock, Clancy	Geologist	405-742-1258
Jones, Monte J.	Civil Engineer	405-742-1261
Lane, Andrea R.	Civil Engineering Technician	405-742-1218
Vacant	Design Engineer	405-742-1262
Schneider, Scott E.	Agricultural Engineer	405-742-1259
Slowik, Victor W.	Design Engineer (Multi-State)	405-742-1272
Sternitzke, Donald	Water Mgmt Specialist	580-256-5320 x 120
Headquartered at:	3300 Oklahoma Ave, Ste 900 Woodward, OK 73801 FAX 580-256-3859	

---

### Management & Strategy Staff

Wood II, James D	Assistant State Conservationinst (Management & Strategy)	405-742-1277 405-385-1103 Mobile
Ketch, Joshua	Business Services Specialist	405-742-1224
Sites, Cassandra L.	Financial Resource Specialist	405-742-1219
Hasenmyer, Sarah	Management Analyst	405-742-1228

---

## OKLAHOMA PERSONNEL DIRECTORY

### Programs Staff

Zetterberg, Richard D.	Assistant State Conservationist (Programs)	405-742-1236 405-334-1342 Mobile
Foulks, Sarah	Program Assistant	405-742-1234
Vacant	Resource Conservationist	405-742-1234
Bennett, Andrew C.	Resource Conservst (Programs)	405-742-1208
Oliver, Melanie D.	Resource Conservst (Programs)	405-742-1252
Meyers, Jody	Resource Conservationist	405-742-1234 405-742-1288 FAX
Jones, Tim Headquartered at:	WRP Specialist 1110 West Stovall Road Wilburton, OK 74578 FAX 918-465-3209	918-465-2181 x 3
Barner, Steve L. Headquartered at:	WRP Specialist 3101 Elks Road McAlester, OK 74501-2573 Mobile 405-742-0580 FAX 918-423-1542	918-423-8730 x 116

---



## OKLAHOMA PERSONNEL DIRECTORY

### State Office (Cont'd)

Staff / Personnel	Title	Telephone
<b>Public Affairs Staff</b>		
Wood II, James D.	Point of Contact	405-742-1277
Hathorne, Robert	Public Affairs Specialist	405-742-1244
<hr/>		
<b>Soil Science Staff</b>		
Alspach Steven D.	State Soil Scientist	405-742-1249 405-334-3790 Mobile
	<u>Geographic Information Systems</u>	
Etheredge, Lori	Cartographer/GIS Specialist	405-742-1250
<hr/>		
<b>Water Resources Staff</b>		
Burns, April D.	Acting Assistant State Conservationist (Water Resources)	405-742-1206 405-334-2924 Mobile
Burns, April D.	Water Resources Coordinator	405-742-1284
Kaiser, Sharon G.	Secretary	405-742-1245
Kersten, Ted D.	Civil Engineer	405-742-1275
Kraft, K. C.	Archaeologist	405-742-1271 405-612-1109 Mobile
Lane, Richard L.	Civil Engineer	405-742-1205
Utley, Gary W.	Hydraulic Engineer	405-742-1229

## OKLAHOMA PERSONNEL DIRECTORY

### Zone Administrative Staff

Halper, Melisa Headquartered at:	Zone 1 Office Automation Clerk Woodward Technical Service Office 3300 Oklahoma Ave Ste 900 Woodward, OK 73801 FAX 580-256-3859	580-256-5320x6
Vacant Headquartered at:	Zone 2 Office Automation Clerk Claremore Technical Service Office 1900 West Will Rogers Circle Ste A Claremore, OK 74017 FAX 918-342-6897	918-341-3222x115
Koch, Saska Headquartered at:	Zone 3 Office Automation Clerk Clinton Technical Service Office 1725 S. US HWY 183 S. Ste 106 Clinton, OK 73601 FAX 580-323-6131	580-323-3733x219
Parkhurst, Linda G. Headquartered at:	Zone 4 Office Automation Clerk McAlester Technical Service Office 2099 N. Geoge Nigh Expy McAlester, OK 74501 FAX 2 Mail 855-421-2586	918-423-8730x113

---

## OKLAHOMA PERSONNEL DIRECTORY

### State Office (Cont'd)

Office Name / Address / Personnel	Title	Telephone
--------------------------------------	-------	-----------

---

#### Oklahoma Conservation Commission Employees

Headquartered at the Oklahoma State Office

Holkum, Lil	Clerk-Typist	405-742-1255	WRS Staff
Caldwell, Larry W.	Civil Engineer	405-742-1254	
		405-742-1287	FAX
Stewart, Janet M.	Landrights Attorney	405-742-1240	
		405-742-1201	FAX

---

#### USDA/NRCS Liaison Office

Langston University

Agriculture Research Education and Extension Bldg., Room 148 (PO Box 846)

Langston, OK 73050

**405-466-2909 FAX**

Vacant	Agricultural Liaison Officer	405-466-6124	
		405-612-2435	Mobile

---

## OKLAHOMA PERSONNEL DIRECTORY

### USDA / OCIO Information Technology Services – Oklahoma Staff

Personnel	Headquarters / Address	Title	FAX / Telephone	Mobile phone
<p><b>Oklahoma State Office</b>            100 USDA, Suite 206            Stillwater, OK 74074-2655</p>				
			<b>405-742-1289 FAX</b> (Lou Ann & Lisa)	
			<b>405-742-1028 FAX</b> (Eric & Shelia)	
Sauer, Lisa		Group Manager	405-742-1230	405-334-1998
Cook, Shelia		IT Specialist	405-742-1165	405-612-2154
Angles, Eric		IT Specialist	405-742-1015	405-612-2174
Spencer, James		IT Specialist	405-742-1170	405-612-2167
<p><b>Clinton Field Service Office</b>            1725 S. US Highway 183            Clinton, OK 73601-2439</p>				
			<b>580-323-6469 FAX</b>	
Bivens, Christopher		IT Specialist	580-323-0366 x 118	405-742-7141
<p><b>Lawton Field Service Office</b>            1606 NW Lawton Ave            Lawton, OK 7507</p>				
			<b>580-355 4306FAX</b>	
Potts, Dewayne		IT Specialist	580-353-1564 x 114	405-612-2403
<p><b>McAlester Field Service Center</b>            2099 N. George Nigh Expressway            McAlester, OK 74501-2573</p>				
			<b>918-423-2745 FAX</b>	
Greenwood, Todd		IT Specialist	405-334-1998	405-880-1236
<p><b>Okmulgee Field Service Center</b>            719 E 8<sup>th</sup>, Suite D            Okmulgee, OK 74447-0548</p>				
			<b>918-756-0716 FAX</b>	
Cline, Joey		IT Specialist	918-756-0850 x107	918-752-8279
<p><b>Purcell Field Service Center</b>            1721 Hardcastle Blvd            Purcell, OK 73080</p>				
			<b>405-238-3117 FAX</b>	
McNeely, Pamela D.		IT Specialist	405-527-3160	405-880-5469

## OKLAHOMA PERSONNEL DIRECTORY

### **Tulsa Field Service Center**

5401 S. Sheridan, Suite 201  
Tulsa, OK 74145-7522

**918-280-1594 FAX**

---

Harris, David	IT Specialist	918-388-7129 x 115	918-338-7129
---------------	---------------	--------------------	--------------

---

### **Woodward Technical Service Center**

3300 Oklahoma Ave, Ste 90  
Woodward, OK 73801

**580-256-3859 FAX**

Posey, Brian	IT Specialist	580-256-5320 x125	405-880-1211
--------------	---------------	-------------------	--------------

---

## OKLAHOMA PERSONNEL DIRECTORY

### Field Service Centers and Conservation District Offices

**Office Name / Address /  
Personnel**

**Title**

**Telephone**

---

#### **Ada Field Service Center**

1328 Cradduck Road  
Ada, OK 74820

**580-332-3905**

**855-413-7580 Fax2Mail**

Serving Pontotoc County & Pontotoc County Conservation District

#### NRCS Employees

Horton, Clay J.

District Conservationist

580-332-3905 x109

Vacant

Soil Conservation Technician

580-332-3905 x111

Wright, Tony L.

Soil Conservationist

580-332-3905 x110

#### District Employees

Armstrong, Robin

District Secretary

580-332-7979 x101

Moore, Melissa J.

District Manager

580-332-7979 x101

---

#### **Altus Field Service Center**

3100 N. Main, Suite A  
Altus, OK 73521-1305

**580-482-4312**

**855-417-8398 Fax2Mail**

Serving Jackson County & Jackson County Conservation District

#### NRCS Employees

Skiles, Don

District Conservationist

580-482-4312 x114

Taylor, Brandon

Rangeland Mgmt Specialist

580-482-4312 x112

Warren, Ronnie J.

Soil Conservation Technician

580-482-4312 x111

#### District Employees

Dimitratos, Belinda

District Secretary

580-482-4312 x191

---

#### **Alva Field Service Center**

927 W. Oklahoma Blvd  
Alva, OK 73717-2627

**580-327-3136**

**855-417-8399 Fax2Mail**

Serving Woods County & East Woods County Conservation District

#### NRCS Employees

Oliphant, Shelly D.

District Conservationist

580-327-3136 x 20

Nighswonger, Diana

Rangeland Management Specialist

580-327-3136 x 16

Vacant

Soil Conservation Technician

580-327-3136 x 21

#### District Employees

Miller, Brandi L.

District Office Administrator

580-327-0218 x 19

---

## OKLAHOMA PERSONNEL DIRECTORY

### Field Service Centers and Conservation District Offices (Cont'd)

<u>Office Name / Address / Personnel</u>	<u>Title</u>	<u>Telephone</u>
--	--------------	------------------

---

#### **Anadarko Field Service Center**

907 W. Petree Rd. Unit 1  
Anadarko, OK 73005

**405-247-3303**

**855-417-8400 Fax2Mail**

Serving Caddo County & South Caddo County Conservation District

#### NRCS Employees

Metz, Danielle D.	District Conservationist	405-247-3303 x3
Parker, Barry A.	Soil Conservation Technician	405-247-3303 x116
Price, Jerrod T.	Soil Conservation Technician	405-247-3303 x115
Yule, Reed	Soil Conservationist	405-247-3303

#### Pauls Valley Watershed Construction Office Employees Headquartered at Anadarko

Vacant	Civil Engineering Technician	405-247-3303 x131
--------	------------------------------	-------------------

#### District Employees

Littlechief, Paula	District Secretary	405-247-3747 x101
Allen, Christopher L.	District Manager	405-247-3747 x101

---

#### **Antlers Field Service Center**

510 Highway 271 North  
Antlers, OK 74523

**580-298-3281**

**855-417-8401 Fax2Mail**

Serving Pushmataha County & Pushmataha County Conservation Dist.

#### NRCS Employees

Ward, Cynthia D.	District Conservationist	580-298-3281 x 3
------------------	--------------------------	------------------

#### District Employees

Vacant	District Secretary	580-298 3668 x 5
--------	--------------------	------------------

---

#### **Ardmore Field Service Center**

2428 Autumn Run, Suite A  
Ardmore, OK 73401-2222

**580-223-7277**

**855-417-8402 Fax2Mail**

Serving Carter County & Arbuckle Conservation District

#### NRCS Employees

Williams, James S.	District Conservationist	580-223-7277
Johnson, Randy L.	Soil Conservation Technician	580-223-7277

#### District Employees

Mills, Joyce L.	District Programs Coordinator	580-223-5865
-----------------	-------------------------------	--------------

---

## OKLAHOMA PERSONNEL DIRECTORY

### Field Service Centers and Conservation District Offices (Cont'd)

<u>Office Name / Address / Personnel</u>	<u>Title</u>	<u>Telephone</u>
<b>Arnett Field Service Center</b>		
155 E. Renfrow (PO Box 298) Arnett, OK 73832		<b>580-885-7244</b> <b>855-417-8403 Fax2Mail</b>
	Serving Ellis County & Ellis County Conservation District	
<u>NRCS Employees</u>		
Howard, Terrell D.	District Conservationist	580-885-7244 x108
<u>District Employees</u>		
Bryan, Whitney J.	District Secretary	580-885-7244 x101
<hr/>		
<b>Atoka Field Service Center</b>		
2867 S. Mississippi Atoka, OK 74525		<b>580-889-2554</b> <b>855-417-8404 Fax2Mail</b>
	Serving Atoka County & Atoka County Conservation District	
<u>NRCS Employees</u>		
Mathis, Stacey H.	District Conservationist	580-889-2554 x111
Vacant	Soil Conservation Technician	580-889-2554 x112
<u>District Employees</u>		
Bradford, Glenna	District Programs Coordinator	580-889-5615 x101
Milam, David B.	District Equipment Manager	580-889-5615 x113
<hr/>		
<b>Beaver Field Service Center</b>		
106 W. First (PO Box 146) Beaver, OK 73932-0146		<b>580-625-3302</b> <b>855-417-8405 Fax2Mail</b>
	Serving Beaver County & Beaver County Conservation District	
<u>NRCS Employees</u>		
Hughes, Jeremy L.	District Conservationist	580-625-3302 x109
Vacant	Rangeland Management Specialist	580-625-3302 x110
<u>District Employees</u>		
Markland, Shawnee	District Secretary	580-625-3813 x101



## OKLAHOMA PERSONNEL DIRECTORY

### Field Service Centers and Conservation District Offices (Cont'd)

**Office Name / Address /**

**Personnel**

**Title**

**Telephone**

---

#### **Boise City Field Service Center**

210 S. Cimarron (PO Box 1086)  
Boise City, OK 73933-1086

**580-544-2401**

**855-420-3815 Fax2Mail**

Serving Cimarron County & Cimarron County Conservation District

#### NRCS Employees

Rodriguez, Delfino

District Conservationist

580-544-2401 x102

405-743-9437 Mobile

Vacant

Rangeland Management Specialist

580-544-2401 x102

#### District Employees

Imler, Iris

District Secretary

580-544-3048 x101

---

#### **Bristow Field Service Center**

203 South Elm  
Bristow, OK 74010-3449

**918-367-2113**

**855-420-3816 Fax2Mail**

Serving Creek County & Creek County Conservation District

#### NRCS Employees

Jones, Nicholas W.

District Conservationist

918-367-2113 x104

Clemens, Christopher

Soil Conservation Technician

918-367-2113 x3

#### District Employees

Boswell, Teresa D.

District Secretary

918-367-1012 x101

---

#### **Buffalo Field Service Center**

# 2 Miles Addition (PO Box 353)  
Buffalo, OK 73834

**580-735-2033**

**855-420-3821 Fax2Mail**

Serving Harper County & Harper County Conservation District

#### NRCS Employees

McGough, David L.

District Conservationist

580-735-2033 x102

Cook, Roy W.

Soil Conservation Technician

580-735-2033 x107

#### District Employees

Richard, Christina

District Secretary

580-735-2418 x101

Vacant

District Manager

580-735-2418 x3

---

## OKLAHOMA PERSONNEL DIRECTORY

### Field Service Centers and Conservation District Offices (Cont'd)

**Office Name / Address /**

**Personnel**

**Title**

**Telephone**

---

#### **Chandler Field Service Center**

201 N. Sandy Lane  
Chandler, OK 74834

**405-258-1405**

**855-420-3822 Fax2Mail**

Serving Lincoln County & Lincoln County Conservation District

#### NRCS Employees

Stinchcomb Jr, Joe E.

District Conservationist

405-258-1405 x107

Fowler, Dennis E.

Soil Conservation Technician

405-258-1405 x108

Evans III, Lloyd R.

Soil Conservationist

405-258-1405 x109

#### District Employees

Ashcraft, Heather L.

District Secretary

405-258-5011 x101

---

#### **Cherokee Field Service Center**

401 W. Cherokee, Suite C  
Cherokee, OK 73728-3908

**580-596-2625**

**855-420-3823 Fax2Mail**

Serving Alfalfa County & Alfalfa County Conservation District

#### NRCS Employees

Dotson, Robert D.

District Conservationist

580-596-2625 x106

Greuel, William

Soil Conservationist

580-596-2625 x107

Turner, Denise B.

Grazing Land Specialist

580-596-2625 x108

#### District Employees

Fanning, Kelly

District Secretary

580-596-2625 x101

---

#### **Cheyenne Field Service Center**

301 E. Broadway Avenue (PO Box 410)  
Cheyenne, OK 73628-0410

**580-497-2293**

**855-420-3824 Fax2Mail**

Serving Roger Mills County & Upper Washita Conservation District

#### NRCS Employees

Allen, Gregory C.

District Conservationist

580-497-2293 x108

Bogle, Laurie A.

Rangeland Mgmt. Specialist

580-497-2293 x109

Swartwood, Jerry W.

Soil Conservation Technician

580-497-2293 x110

#### District Employees

York, Anne

District Manager

580-497-3413 x101

Ross, Ken

District Technician

580-497-3413 x3

---

## OKLAHOMA PERSONNEL DIRECTORY

### Field Service Centers and Conservation District Offices (Cont'd)

**Office Name / Address /**

**Personnel**

**Title**

**Telephone**

---

#### **Chickasha Field Service Center**

828 W. Choctaw Ave.

Chickasha, OK 73018-2310

**405-224-1381**

**855-420-3964 Fax2Mail**

Serving Grady County & Grady County Conservation District

#### NRCS Employees

Walker, Kim R.

District Conservationist

405-224-1381 x101

Jones, Travis

Rangeland Mgmt. Specialist

405-224-1381 x101

Shotts, Kevin N.

Soil Conservation Technician

405-224-1381 x106

#### District Employees

Surber, Dee

District Programs Coordinator

405-224-0523 x103

Burrows, Jeremy

District Engineering Aide

405-224-1381 x3

---

#### **Claremore Field Service Center**

1900 W. Will Rogers Circle, Suite C

Claremore, OK 74017

**918-341-3276**

**855-420-3965 Fax2Mail**

Serving Rogers County & Rogers County Conservation District

#### NRCS Employees

Colwell, N. Cord

District Conservationist

918-341-3276 x103

Davis, Clayton P.

Soil Conservation Technician

918-341-3276 x108

Montgomery, Lisa

Programs Support Specialist

918-341-3276

#### District Employees

White, Jean

District Secretary

918-341-4147 x101

Gibbs, Robert

Conservation Education Coordinator

918-341-4147 x3

---

#### **Clinton Field Service Center**

1725 S. US HWY 183 South, Suite 104

Clinton, OK 73601-9706

**580-323-0366**

**855-420-3967 Fax2Mail**

Serving Custer County & Custer County Conservation District

#### NRCS Employees

Kelley, Gary Steve

District Conservationist

580-323-0366 x111

Green, Tiffany A.

Soil Conservationist

580-323-0366 x112

Stoll, Jason

Soil Conservation Technician

580-323-0366 x109

#### District Employees

Gerhardt, Cindy

District Secretary

580-323-4875 x101

---

## OKLAHOMA PERSONNEL DIRECTORY

### Field Service Centers and Conservation District Offices (Cont'd)

**Office Name / Address /**

**Personnel**

**Title**

**Telephone**

---

#### **Coalgate Field Service Center**

106 East Post Avenue  
Coalgate, OK 74538

**580-927-2182**

**855-420-3968 Fax2Mail**

Serving Coal County & Coal County Conservation District

#### NRCS Employees

Wright, Russell A.  
Campbell, Eddie P.

District Conservationist  
Soil Conservation Technician

580-927-2182

580-927-2182

#### District Employees

Williams, Melissa  
Langston, Rodger D.

District Secretary  
District Equipment Manager

580-927-3414

580-927-3414

---

#### **Cordell Field Service Center**

1505 N. Glenn English  
Cordell, OK 73632-1405

**580-832-3275**

**855-420-3970 Fax2Mail**

Serving Washita County & Washita County Conservation District

#### NRCS Employees

Benton, Mark W.  
Mann, Jonathan  
Jackson, Robert Dean

District Conservationist  
Soil Conservationist  
Soil Conservation Technician

580-832-3275 x115

580-832-3275 x116

580-832-3275 x116

#### District Employees

Brown, Edith

District Secretary

580-832-3719 x101

---

#### **Dewey Field Service Center**

1067 N.E. Washington Blvd.  
Bartlesville, OK 74006

**918-331-9423**

**855-420-3971 Fax2Mail**

Serving Washington County & Caney Valley Conservation District

#### NRCS Employees

Dixon, James R.  
Patrick, Russell D.

District Conservationist  
Soil Conservation Technician

918-331-9423 x101

918-331-9423 x102

#### District Employees

Vacant

District Secretary

918-331-9800

---

## OKLAHOMA PERSONNEL DIRECTORY

### Field Service Centers and Conservation District Offices (Cont'd)

#### Office Name / Address /

Personnel

Title

Telephone

---

#### **Duncan Field Service Center**

3901 West Beech  
Duncan, OK 73533

**580-255-7676**  
**855-420-3972 Fax2Mail**

Serving Stephens County & Stephens County Conservation District

#### NRCS Employees

Davis, Dana L.  
Mumford, Payton  
Owens, James C.I

District Conservationist  
Soil Conservationist  
Soil Conservation Technician

580-255-7676 x108  
580-255-7676  
580-255-7676 x1

#### District Employees

Marshall, Alisa

District Secretary

580-255-5798 x101

---

#### **Durant Field Service Center**

200 Gerlach Dr.  
Durant, OK 74701

**580-924-1564**  
**855-420-3973 Fax2Mail**

Serving Bryan County & Bryan Conservation District

#### NRCS Employees

Hannon, Valerie  
Green, Jordan  
Blakley, Jim

District Conservationist  
Rangeland Mgmt. Specialist  
Soil Conservation Technician

580-924-1564 x113  
580-924-1564 x114  
580-924-1564 x111

#### District Employees

Brewster, Debbie  
Vacant

District Secretary  
District Equipment Manager

580-924-5464 x101  
580-924-5464 x101

---

#### **EI Reno Field Service Center**

1625 E. Hwy. 66  
EI Reno, OK 73036-5769

**405-262-1958**  
**855-420-3974 Fax2Mail**

Serving Canadian County & East Canadian County Conservation District

#### NRCS Employees

Best, Christopher M.  
Hood, Larry R.  
Owen, Nick R.

District Conservationist  
Soil Conservationist  
Soil Conservation Technician

405-262-1958 x106  
405-262-1958 x108  
405-262-1958 x109

#### District Employees

Vacant

District Secretary

405-262-7388 x101

---

## OKLAHOMA PERSONNEL DIRECTORY

### Field Service Centers and Conservation District Offices (Cont'd)

<u>Office Name / Address / Personnel</u>	<u>Title</u>	<u>Telephone</u>
<b>Enid Field Service Center</b>		
1216 W. Willow, Suite D Enid, OK 73703-2532		<b>580-237-4321</b> <b>855-420-4480 Fax2Mail</b>
	Serving Garfield County & Garfield County Conservation District	
<u>NRCS Employees</u>		
Sheik, Michael J.	District Conservationist	580-237-4321 x 125 405-742-7405-Mobile
Harris, James M.	Soil Conservation Technician	580-237-4321 x 128
Vacant	Soil Conservationist	580-237-4321 x 127
<u>District Employees</u>		
Schultz, Brenda	District Secretary	580-237-7880 x 124
<hr/>		
<b>Eufaula Field Service Center</b>		
417738 East 1210 Road (PO Box 656) Eufaula, OK 74432		<b>918-689-2301</b> <b>855-420-4531 Fax2Mail</b>
	Serving McIntosh County, McIntosh County & Checotah Conservation District	
<u>NRCS Employees</u>		
Worley, Jacob W.	District Conservationist	918-689-2301 x101
Harjo, Shane J.	Soil Conservation Technician	918-689-2301 x102
<u>District Employees</u>		
Willmon, Laura	District Secretary	918-689-4040 x100
<hr/>		
<b>Fairview Field Service Center</b>		
225 N. Main Fairview, OK 73737-1622		<b>580-227-4844</b> <b>855-420-4532 Fax2Mail</b>
	Serving Major County and Major County Conservation District	
<u>NRCS Employees</u>		
Roberts, Michael D.	District Conservationist	580-227-4844 x104
Hall, Joshua	Soil Conservationist	580-227-4844 x3
Vacant	Soil Conservation Technician	580-227-4844 x105
<u>District Employees</u>		
Bierig, Cindy J.	District Secretary	580-227-4844 x101

## OKLAHOMA PERSONNEL DIRECTORY

### Field Service Centers and Conservation District Offices (Cont'd)

**Office Name / Address /**

**Personnel**

**Title**

**Telephone**

---

#### **Fort Cobb Field Office**

PO Box 96

Fort Cobb, OK 73038-0096

**405-643-5102**

**405-643-5518 FAX**

Serving Caddo County & West Caddo Conservation District

#### District Employees

Niece, Rita

District Secretary

405-643-5102

Crall, Edward

OCC Education Coordinator

405-643-5102

---

#### **Frederick Field Service Center**

102 E. Floral Ave, Suite 1

Frederick, OK 73542

**580-335-2817**

**855-591-1269 Fax2Mail**

Serving Tillman County & Tillman County Conservation District

#### NRCS Employees

Winslett, Charles A.

District Conservationist

580-335-2817 x113

Schreiner, Tony R.

Soil Conservation Technician

580-335-2817 x112

Vacant

Soil Conservationist

580-335-2817 x111

#### District Employees

Moore, Glenda F.

District Secretary

580-335-3630 x101

---

#### **Freedom Field Office**

403 Main (PO Box 153)

Freedom, OK 73038-0096

**580-621-3251**

**580-621-3251 FAX**

Serving Woods County & Woods County Conservation District

#### District Employees

Nixon, Kari

District Equipment Manager

580-621-3251

---

#### **Geary Field Office**

129 E Main

Geary, OK 73040-2421

**405-884-2383**

**405-884-2308 FAX**

Serving Blaine and Canadian Counties & Central N. Canadian River CD

#### District Employees

Scheihing, Katy

District Programs Coordinator

405-884-2383

#### Oklahoma Conservation Commission Employees

Ramming, Monty

OCC Project Manager

405-884-2383

---

## OKLAHOMA PERSONNEL DIRECTORY

### Field Service Centers and Conservation District Offices (Cont'd)

**Office Name / Address /**

**Personnel**

**Title**

**Telephone**

---

#### **Guthrie Field Service Center**

2227 Iron Mound Dr., Suite B  
Guthrie, OK 73044

**405-282-1695**

**855-420-4534 Fax2Mail**

Serving Logan County & Logan County Conservation District

#### NRCS Employees

Peterson, J. D'Ann

District Conservationist

405-282-1695 x108

Vacant

Soil Conservationist

405-282-1695 x 112

Kraus, Vivian

Farm Bill Specialist

405-282-1695 x108

#### District Employees

Schmidt, Kathy

District Manager

405-282-2363 x101

Freundt, Paul

District Equipment Manager

405-282-2363 x3

---

#### **Guymon Field Service Center**

601 S. E. Fifth (HCR4 Box 120)  
Guymon, OK 73942-9804

**580-338-7379**

**855-420-4535 Fax2Mail**

Serving Texas County & Texas County Conservation District

#### NRCS Employees

Messenger, Alan R

District Conservationist

580-338-7379 x116

580-651-5625 Mobile

Fields Grayson

Soil Conservation Technician

580-338-7379 x113

Hill Jr, James L.

Soil Conservation Technician

580-338-7379 x114

#### District Employees

Green, Clancy Jo

District Secretary

580-338-8873 x101

---



## OKLAHOMA PERSONNEL DIRECTORY

### Field Service Centers and Conservation District Offices (Cont'd)

<b>Office Name / Address / Personnel</b>	<b>Title</b>	<b>Telephone</b>
<b>Hinton Field Office</b>		
201 E. Main (PO Box 698) Hinton, OK 73047-0698		<b>405-542-3205</b> <b>405-542-3231 FAX</b>
	Serving Blaine, Caddo & Canadian Counties & North Caddo Cons. Dist.	
<u>District Employees</u>		
Weathers, Amy	District Secretary	405-542-3205
<hr/>		
<b>Hobart Field Service Center</b>		
802 W. 11 <sup>th</sup> Hobart, OK 73651-5402		<b>580-726-3347</b> <b>855-420-4536 Fax2Mail</b>
	Serving Kiowa County & Kiowa County Conservation District	
<u>NRCS Employees</u>		
Brock, Will M.	District Conservationist	580-726-3347 x119
Griffith, Grant S.	Soil Conservation Technician	580-726-3347 x3
Vacant	Rangeland Mgmt Specialist	580-726-3347 x120
<u>District Employees</u>		
Stafford, Paula	District Secretary	580-726-3786 x101
<hr/>		
<b>Holdenville Field Service Center</b>		
419 E. Highway Holdenville, OK 74848-4057		<b>405-379-3221</b> <b>855-420-4537 Fax2Mail</b>
	Serving Hughes County & Hughes County Conservation District	
<u>NRCS Employees</u>		
Stanford, Amanda	District Conservationist	405-379-3221 x106
Norem, Julie	Soil Conservationist	405-379-3221 x108
Wheeler Jr, Harold W.	Soil Conservation Technician	405-379-3221 x107
Williams, Katie	Farm Bill Specialist	405-379-3221 x110
<u>District Employees</u>		
Jones, Andrea G.	District Secretary	405-379-2570 x101

## OKLAHOMA PERSONNEL DIRECTORY

### Field Service Centers and Conservation District Offices (Cont'd)

**Office Name / Address /  
Personnel**

**Title**

**Telephone**

---

#### **Hollis Field Service Center**

320 N. Main  
Hollis, OK 73550-3037

**580-688-3456**  
**855-420-4539 Fax2Mail**

Serving Harmon County & Harmon County Conservation District

#### NRCS Employees

Teague, Melissa R.  
Vacant  
Wilson, James R.

District Conservationist  
Soil Conservationist  
Soil Conservation Technician

580-688-3456 x112  
580-688-3456 x112  
580-688-3456 x111

#### District Employees

Smith, Jennifer S.  
Caswell, Geary

District Programs Coordinator  
District Employee

580-688-3674 x101  
580-688-3674 x101

---

#### **Hugo Field Service Center**

2681 US HWY 70  
Hugo, OK 74743

**580-326-7516**  
**855-420-4632 Fax2Mail**

Serving Choctaw County & Kiamichi Conservation District

#### NRCS Employees

Pace, J.Scott  
Hannon, David  
Kelso, Derek L.

District Conservationist  
Soil Conservation Technician  
Soil Conservationist

580-326-7516 x108  
580-326-7516 x109  
580-326-7516 x113

#### District Employees

Payne, Lisa A.  
Robertson, Greg

District Secretary  
District Manager

580-326-7331 x101  
580-326-7331 x101

---

#### **Idabel Field Service Center**

201 N. Central Ave., Room 124  
Idabel, OK 74745-3831

**580-286-2574**  
**855-420-4635 Fax2Mail**

Serving McCurtain County & Little River Conservation District

#### NRCS Employees

Shaw, Eric  
Vacant  
Allen, Gregory D.  
Vacant

District Conservationist  
Soil Conservationist  
Soil Conservation Technician  
Soil Conservation Technician

580-286-2574 x104  
580-286-2574  
580-286-2574 x105  
580-286-2574 x110

#### District Employees

Gennaro, Vicky  
Acker, Frank

District Secretary  
District Employee

580-286-7645 x101  
580-286-7645 x101

---

## OKLAHOMA PERSONNEL DIRECTORY

### Field Service Centers and Conservation District Offices (Cont'd)

**Office Name / Address /  
Personnel**

**Title**

**Telephone**

---

#### **Jay Field Service Center**

2749 State Hwy 20  
Jay, OK 74346

**918-253-4513**

**855-420-4641 Fax2Mail**

Serving Delaware County & Delaware County Conservation District

#### NRCS Employees

Ramming, Michael J.	District Conservationist	918-253-4513 x107
Brewster, Deborah	District Conservationist	918-253-4513
Xiong, Merica	Soil Conservationist	918-253-4513 x108
Jordan, John D.	Soil Conservation Technician	918-253-4513 x108

#### District Employees

Rose, Christine	District Secretary	918-253-4513 x101
Mefford, Marti	District Employee	918-253-4513 x113

#### Oklahoma Conservation Commission Employees

Ashbrener, Jill L.	Education Coordinator / Planner	918-253-4513 x109
Franke, Daniel J.	319 Planner / WQ Specialist	918-253-4513 x109
Wood, Kevin	District Equip Manager	918-253-4513

---

#### **Kingfisher Field Service Center**

1600 S. 13<sup>th</sup> St.  
Kingfisher, OK 73750

**405-375-3200**

**855-420-4645 Fax2Mail**

Serving Kingfisher County & Kingfisher County Conservation District

#### NRCS Employees

Burns, Brandon K.	District Conservationist	405-375-3200 x101
Lowman, Andrew T.	Soil Conservation Technician	405-375-3200 x117

#### Langston University Employees

Chandler, Larry	Outreach Specialist	405-375-3200 x3
-----------------	---------------------	-----------------

#### District Employees

Nowlin, Lea Ann	District Secretary	405-375-5373 x102
-----------------	--------------------	-------------------

---

#### **Konawa Field Office**

102 E. 1<sup>st</sup> St.  
Konawa, OK 74849

**580-925-3117**

**580-925-3117 FAX**

Serving Pottawatomie and Seminole Counties & Konawa Cons. District

#### District Employees

Brooks, Angie	District Secretary	580-925-3117
---------------	--------------------	--------------

---

## OKLAHOMA PERSONNEL DIRECTORY

### Field Service Centers and Conservation District Offices (Cont'd)

**Office Name / Address /**

**Personnel**

**Title**

**Telephone**

---

#### **Lawton Field Service Center**

1606 NW Lawton Ave  
Lawton, OK 73507

**580-353-1564**

**855-420-4649 Fax2Mail**

Serving Comanche County & Comanche County Conservation District

#### NRCS Employees

Schreiner, J. Kirk

District Conservationist

580-353-1564 x116

Igo, Russ M.

Soil Conservation Technician

580-353-1564 x104

Vacant

Soil Conservationist

580-353-1564 x105

Anderson-Osobu, Anquette

Farm Bill Specialist

580-353-1564

#### District Employees

Theis, Becky

District Secretary

580-353-0532 x101

Kuntz, David

District Manager

580-353-0532 x106

---

#### **Madill Field Service Center**

800 Cedar Drive  
Madill, OK 73446-1062

**580-795-3148**

**855-421-2583 Fax2Mail**

Serving Marshall County & Marshall County Conservation District

#### NRCS Employees

Vacant

District Conservationist

580-795-3148 x102

Vacant

Soil Conservation Technician

580-795-3148 x101

#### District Employees

Hudson, Maribeth

District Secretary

580-795-3644 x103

---

#### **Mangum Field Service Center**

116 E. Pierce  
Mangum, OK 73554

**580-782-2787**

**855-421-2584 Fax2Mail**

Serving Greer County & Greer County Conservation District

#### NRCS Employees

Spears, Kevin S.

District Conservationist

580-782-2787 x103

Lanning, Lance

Soil Conservation Technician

580-782-2787

Vacant

Rangeland Management Specialist

580-782-2787 x 2

#### District Employees

Gilpatrick, Donna

District Secretary

580-782-2787 x 3

---

## OKLAHOMA PERSONNEL DIRECTORY

### Field Service Centers and Conservation District Offices (Cont'd)

**Office Name / Address /**

**Personnel**

**Title**

**Telephone**

---

#### **Marietta Field Service Center**

1215 N. HWY 77  
Marietta, OK 73448

**580-276-3201**  
**855-421-2585 Fax2Mail**

Serving Love County & Love County Conservation District

#### NRCS Employees

Sanders, Warren R.	District Conservationist	580-276-3201 x104
McVeigh, Jami B.	Soil Conservationist	580-276-3201 x110
Balch, Jerry D.	Soil Conservation Technician	580-276-3201 x106

#### District Employees

Bone, Betty J.	District Secretary	580-276-3867 x101
Tate, Kyle	District Equipment Manager	580-276-3867 x101

---

#### **McAlester Field Service Center**

2099 North George Nigh Expressway  
McAlester, OK 74501

**918-423-4073 x 3**  
**855-421-2586 Fax2Mail**

Serving Pittsburg County & Pittsburg County Conservation District

#### NRCS Employees

Rogers Jr., Charles C.	District Conservationist	918-423-4073 x 101
Wright, Teresa D.	Soil Conservation Technician	918-423-4073 x 109

#### District Employees

Isbell, Amy	District Secretary	918-423-3990 x111
Hamilton, Bradley	District Manager	918-423-3990 x112

---

#### **Medford Field Service Center**

624 N. Highway 81  
Medford, OK 73759

**580-395-2324**  
**855-421-2587 Fax2Mail**

Serving Grant County & Grant County Conservation District

#### NRCS Employees

Stephens, Karla R.	District Conservationist	580-395-2324 x107
Ramerth, Eric	Soil Conservationist	580-395-2324
Cambron, Robert E.	Soil Conservation Technician	580-395-2324 x110

#### District Employees

Ediger, Judith Lynn	District Secretary	580-395-2146 x101
---------------------	--------------------	-------------------

---

## OKLAHOMA PERSONNEL DIRECTORY

### Field Service Centers and Conservation District Offices (Cont'd)

#### Office Name / Address /

Personnel

Title

Telephone

---

#### **Miami Field Service Center**

630 E. Steve Owens, Suite 3  
Miami, OK 74354

**918-542-4576**

**855-421-2588 Fax2Mail**

Serving Ottawa County & Ottawa County Conservation District

#### NRCS Employees

Davied, Steven

District Conservationist

918-542-4576 x106

Vacant

Soil Conservationist

918-542-4576 x106

Vacant

Soil Conservation Technician

918-542-4576 x107

#### District Employees

Hudson, Shirley

District Secretary

918-542-6423 x104

---

#### **Mountain View Field Office**

318 Main Street (PO Box 369)  
Mountain View, OK 73062

**580-347-2220**

**580-347-2143 FAX**

Serving Kiowa and Washita Counties & Mountain View Cons. District

#### District Employees

Clark, Jo Etta

District Secretary

580-347-2220

---

#### **Muskogee Field Service Center**

3001 Azalea Park Drive  
Muskogee, OK 74401

**918-682-8831**

**855-421-2589 Fax2Mail**

Serving Muskogee County & Muskogee County Conservation District

#### NRCS Employees

Bowler, Rishell F.

District Conservationist

918-682-8831 x110

Klinger, Kanten

Soil Conservationist

918-682-8831 x111

Barner, Axel

Soil Conservation Technician

918-682-8831

McElhaney, Heather

Farm Bill Specialist

918-682-8831

#### District Employees

Tomlinson, Lydia

District Secretary

918-687-3478 x101

Qualls, Andrew T.

District Information / Ed. Coord.

918-687-3478 x101

---

## OKLAHOMA PERSONNEL DIRECTORY

### Field Service Centers and Conservation District Offices (Cont'd)

**Office Name / Address /**

**Personnel**

**Title**

**Telephone**

---

#### **Newkirk Field Service Center**

5501 N. Pleasantview  
Newkirk, OK 74647

**580-362-3362**

**855-421-2590 Fax2Mail**

Serving Kay County & Kay County Conservation District

#### NRCS Employees

West, Rylan J.

District Conservationist

580-362-3362 x 118

Vacant

Soil Conservation Technician

580-362-3362 x 117

Griffin, Marcus

Soil Conservationist

580-362-3362 x 113

#### District Employees

Stone, Lonette

District Secretary

580-362-2438 x 112

Henning, Susan

District Manager

580-362-2438 x 115

Janda, Chris E.

District Equipment Manager

580-362-2438 x 116

---

#### **Norman Field Service Center**

2600 Van Buren, Suite 2601  
Norman, OK 73072

**405-321-7766**

**855-421-2591 Fax2Mail**

Serving Cleveland County & Cleveland County Conservation District

#### NRCS Employees

Walker, Kim R.

Acting District Conservationist

405-321-7766 x103

Vacant

Rangeland Mgmt Specialist

405-321-7766 x103

#### District Employees

London-Ward, Christine

District Secretary

405-364-7319

---

#### **Nowata Field Service Center**

123 S. Ash  
Nowata, OK 74048

**918-273-3074**

**855-421-2592 Fax2Mail**

Serving Nowata County & Nowata County Conservation District

#### NRCS Employees

Lamb, Julie R.

District Conservationist

918-273-3074 x111

Horton, Robert C.

District Conservationist

918-273-3074 x111

Patrick, Russell D.

Soil Conservation Technician

918-273-3074 x112

#### District Employees

Waltman, Brenda

District Manager

918-273-1100 x101

---

## OKLAHOMA PERSONNEL DIRECTORY

### Field Service Centers and Conservation District Offices (Cont'd)

**Office Name / Address /**

**Personnel**

**Title**

**Telephone**

---

**Okeene Field Office**

218 N. 5<sup>th</sup> Street (PO Box 387)  
Okeene, OK 73763-0387

**580-822-3255**

**580-822-4489 FAX**

Serving Blaine and Kingfisher Counties & Cimarron Valley Cons. District

District Employees

Vacant

District Secretary

580-822-3255

---

**Okemah Field Service Center**

417 S. Sertco Road, Suite B  
Okemah, OK 74859

**918-623-0077**

**855-421-2779 Fax2Mail**

Serving Okfuskee County & Okfuskee County Conservation District

NRCS Employees

Maples, J. Mark  
Vacant

District Conservationist

918-623-0077 x110

Soil Conservation Technician

918-623-0077 x111

District Employees

Sexton, Candye

District Secretary

918-623-1932 x101

---

**Oklahoma City Field Service Center**

4850 N. Lincoln Blvd., Suite B  
Oklahoma City, OK 73105-3315

**405-521-1332**

**855-421-2780 Fax2Mail**

Serving Oklahoma County & Oklahoma County Conservation District

NRCS Employees

Peterson, J. D'Ann  
McNeff, Joshua

Acting District Conservationist

405-521-1332

Soil Conservation Technician

405-521-1332

District Employees

Inmon, Rebecca

District Secretary

405-521-1332 x 100

---



## OKLAHOMA PERSONNEL DIRECTORY

### Field Service Centers and Conservation District Offices (Cont'd)

Office Name / Address /

Personnel

Title

Telephone

---

#### **Okmulgee Field Service Center**

719 E. 8<sup>th</sup>, Suite A

Okmulgee, OK 74447-5508

**918-304-8163**

**855-421-3623 Fax2Mail**

Serving Okmulgee County & Okmulgee County Conservation District

#### NRCS Employees

Dukes, Roderick L.

District Conservationist

918-304-8155

Arnold, LeRoy K.

Soil Conservation Technician

918-304-8158

Neighbors, Tegan

Soil Conservationist

918-304-8156

#### District Employees

Bailey, Jennifer

District Secretary

918-304-8157

Fain, Bobby

Equipment Manager

918-304-8160

---

#### **Pauls Valley Field Service Center**

16664 Butler Rd

Pauls Valley, OK 73075

**405-238-6767**

**855-421-3624 Fax2Mail**

Serving Garvin County & Garvin County Conservation District

#### NRCS Employees

Chandler, Brandon

District Conservationist

580-238-7676 x110

Mosteller, Jennifer D.

Soil Conservation Technician

405-238-6767 x111

Vacant

Soil Conservationist

405-238-6767 x 112

#### Langston University Employees

Carter, Lovie L.

Outreach Liaison

405-238-6767 x132

#### District Employees

Ward, Cindy

District Secretary

405-238-7233 x101

Lyons, Gregory

District Watershed Aide

405-238-7233 x101

---

#### **Pawhuska Field Service Center**

1000 W. Main (Rt. 1 Box 650)

Pawhuska, OK 74056-9801

**918-287-3570**

**855-421-3625 Fax2Mail**

Serving Osage County & Osage County Conservation District

#### NRCS Employees

Ware, Dennis

District Conservationist

918-287-3570 x110

Collyar, Dean C.

Soil Conservation Technician

918-287-3570 x111

Vacant

Rangeland Mgmt. Specialist

918-287-3570 x113

#### District Employees

Collins, Danna

District Secretary

918-287-3290 x101

Manning, John

District Manager

918-287-3290 x104

---

## OKLAHOMA PERSONNEL DIRECTORY

### Field Service Centers and Conservation District Offices (Cont'd)

**Office Name / Address /**

**Personnel**

**Title**

**Telephone**

---

#### **Pawnee Field Service Center**

701 5<sup>th</sup> Street Room 102  
Pawnee, OK 74058-2568

**918-762-2736**  
**855-421-3626 Fax2Mail**

Serving Pawnee County & Pawnee County Conservation District

#### NRCS Employees

Meyer, Daniel	District Conservationist	918-762-2736 x105
Vielma, Jose A.	Soil Conservationist	918-762-2736 x106
Vacant	Soil Conservation Technician	918-762-2736 x107

#### District Employees

Holder, Tammie	District Programs Coordinator	918-762-2736 x101
----------------	-------------------------------	-------------------

---

#### **Perry Field Service Center**

1302 N. Highway 77  
Perry, OK 73077-2433

**580-336-5597**  
**855-421-3627 Fax2Mail**

Serving Noble County & Noble County Conservation District

#### NRCS Employees

Peterson, Russell W.	District Conservationist	580-336-5597 x105
Brorsen, Dennis R.	Soil Conservation Technician	580-336-5597 x 3
Thompson, Melissa	Soil Conservationist	580-336-5597 x3

#### District Employees

Sparks, Jolene	District Secretary	580-336-2003 x102
Warren, Wade A.	District Equipment Manager	580-336-2003 x3

---

#### **Poteau Field Service Center**

109 Kerr Blvd. (PO Box 547)  
Poteau, OK 74953-0547

**918-647-4800**  
**855-421-3628 Fax2Mail**

Serving LeFlore County & LeFlore County Conservation District

#### NRCS Employees

Neumeyer, Donna R.	District Conservationist	918-647-4800 x111
Brown, Justin S.	Soil Conservation Technician	918-647-4800 x121
Harrison Jr, James W.	Soil Conservation Technician	918-647-4800 x112
Ketchum, Tommy	Soil Conservationist	918-647-4800 x114

#### District Employees

Grey, Lisa	District Programs Coordinator	918-647-3554 x115
Faulkenberry, Brandon	District Manager	918-647-3554 x115

---

## OKLAHOMA PERSONNEL DIRECTORY

### Field Service Centers and Conservation District Offices (Cont'd)

**Office Name / Address /**

**Personnel**

**Title**

**Telephone**

---

#### **Pryor Field Service Center**

4238 N. E. 1st (PO Box 36)  
Pryor, OK 74362

**918-825-3673**

**855-421-3629 Fax2Mail**

Serving Mayes County & Mayes County Conservation District

#### NRCS Employees

Bradford, Cleon  
Weaver Jr, William E.

District Conservationist  
Soil Conservation Technician

918-803-5249

918-803-5250

#### District Employees

Pruitt, Niecca R.

District Admin. Officer

918-803-5245

---

#### **Purcell Field Service Center**

1721 Hardcastle Blvd  
Purcell, OK 73080

**405-527-3160**

**855-421-3631 Fax2Mail**

Serving McClain County & McClain County Conservation District

#### NRCS Employees

Buford, Wynea  
Irby, Matthew

District Conservationist  
Soil Conservation Technician

405-527-3160 x108

405-527-3160

#### District Employees

Christian, Patti

District Secretary

405-527-3452 x101

---

#### **Sallisaw Field Service Center**

2606 S. Kerr Blvd. (PO Box 1522)  
Sallisaw, OK 74955

**918-775-6577**

**855-421-3632 Fax2Mail**

Serving Sequoyah County & Sequoyah County Conservation District

#### NRCS Employees

Vacant  
Fleharty, Clint E.  
Vacant

District Conservationist  
Soil Conservationist  
Soil Conservation Technician

918-775-6577

918-775-6577

918-775-6577

#### District Employees

Deen, Danica

District Secretary

918-775-6577 x 102

---

## OKLAHOMA PERSONNEL DIRECTORY

### Field Service Centers and Conservation District Offices (Cont'd)

**Office Name / Address /**

**Personnel**

**Title**

**Telephone**

---

**Sayre Field Service Center**

902 NE Highway 66, Suite C  
Sayre, OK 73662-9394

**580-928-3113**

**855-421-4634 Fax2Mail**

Serving Beckham County & North Fork of Red River Cons. District

NRCS Employees

Vacant

District Conservationist

580-928-3113 x115

Conelius, Lesley B.

Soil Conservationist

580-928-3113 x114

Gay, Don L.

Soil Conservationist

580-928-3113 x114

District Employees

Tucker, Nelda J.

District Secretary

580-928-9950 x113

---

**Shawnee Field Service Center**

201 N. Bell, Room 111  
Shawnee, OK 74801-6940

**405-273-2076**

**855-421-4635 Fax2Mail**

Serving Pottawatomie County & Shawnee Conservation District

NRCS Employees

Fleming, Shawn D.

District Conservationist

405-273-2076 x101

Guy, Stephanie L.

Soil Conservationist

405-273-2076 x109

Vacant

Soil Conservation Technician

405-273-2076 x111

**Shawnee Field Office**

127 N. Park  
Shawnee, OK 74801

**405-275-5220**

**405-273-3606 FAX**

District Employees

Vacant

District Secretary

405-275-5220

---

**Stigler Field Service Center**

1005 W. Main, Suite D  
Stigler, OK 74462-2776

**918-967-2488**

**855-421-4636 Fax2Mail**

Serving Haskell County & Haskell County Conservation District

NRCS Employees

Fenton, Audra Q.

District Conservationist

918-967-2488 x101

Rich, Richard

Soil Conservation Technician

918-967-2488 x102

Ward, Jimmy

Soil Conservationist

918-967-2488 x104

District Employees

Vacant

District Secretary

918-967-8608 x100

Sullins, Anthony Lee

District Manager

918-967-8608 x100

---

## OKLAHOMA PERSONNEL DIRECTORY

### Field Service Centers and Conservation District Offices (Cont'd)

Office Name / Address /

Personnel

Title

Telephone

---

#### Stillwater Field Service Center

2600 S. Main, Suite C  
Stillwater, OK 74074

**405-372-7071**

**855-421-4637 Fax2Mail**

Serving Payne County & Payne County Conservation District

#### NRCS Employees

Elliott, Matthew

District Conservationist

405-372-7071 x114

Ellis, James D.

Soil Conservation Technician

405-372-7071 x112

Vacant

Soil Conservationist

405-372-7071 x111

#### District Employees

Kaufman, Anita L.

District Secretary

405-372-7201 x102

Vacant

District Manager

405-372-7201 x3

---

#### Stilwell Native American Service Center

Route 1 Box 333  
Stilwell, OK 74960

**918-696-7612**

**855-421-4641 Fax2Mail**

Serving Adair County & Adair County Conservation District

#### NRCS Employees

Inman, Andrew R.

District Conservationist

918-696-7612

Bagby, Robert N.

Soil Conservation Technician

918-696-7612

Parker, Cody

Soil Conservationist

918-696-7612

#### District Employees

Teehee, Ashley

District Secretary

918-696-3563

Kester, Eugene

District Manager

918-696-3563

#### Oklahoma Conservation Commission Employees

Mitchell, Tashina C.

OCC Project Coordinator

918-696-7612

Tripp, Trampas W.

OCC Conservation Plan Writer

918-696-7612

---

#### Sulphur Field Service Center

3490 Highway 7 West  
Sulphur, OK 73086

**580-622-3913**

**855-421-4642 Fax2Mail**

Serving Murray County & Murray County Conservation District

#### NRCS Employees

Vacant

District Conservationist

580-622-3913

Vacant

Soil Conservationist

580-622-3913

#### District Employees

Curry, Tammy

District Secretary

580-622-2724

---

## OKLAHOMA PERSONNEL DIRECTORY

### Field Service Centers and Conservation District Offices (Cont'd)

**Office Name / Address /**

**Personnel**

**Title**

**Telephone**

---

#### **Tahlequah Field Service Center**

918 West Choctaw, Suite 2  
Tahlequah, OK 74464-3414

**918-456-1924**

**855-421-4643 Fax2Mail**

Serving Cherokee County & Cherokee County Conservation District

#### NRCS Employees

Worley, Lisel K.  
Vacant

District Conservationist  
Soil Conservation Technician

918-456-1924 x112

918-456-1924 x116

#### District Employees

Murphy, Jacy

District Programs Coordinator

918-456-1919 x101

#### Oklahoma Conservation Commission Employees

Farris, Bullit M.  
Levesque, Gina

OCC Conservation Plan Writer  
OCC Conservation 319 Planner

918-456-1924

918-456-1924

---

#### **Talihina Field Office**

PO Box 429  
Talihina, OK 74571-0429

**918-567-2956**

**918-567-3038 FAX**

Serving LeFlore, Latimer and Pushmataha Cntys & Talihina Cons. Dist.

#### District Employees

Hannebrink, Donna

District Manager

918-567-2956

---

#### **Taloga Field Service Center**

306 S. Broadway  
Taloga, OK 73667-0036

**580-328-5321**

**855-421-7630 Fax2Mail**

Serving Dewey County & Dewey County Conservation District

#### NRCS Employees

Clark, Paul D.  
Vacant

District Conservationist  
Soil Conservationist

580-328-5321 x102

580-328-5321 x113

#### District Employees

Bratten, Coleta

District Secretary

580-328-5366 x101

---

## OKLAHOMA PERSONNEL DIRECTORY

### Field Service Centers and Conservation District Offices (Cont'd)

**Office Name / Address /**

**Personnel**

**Title**

**Telephone**

---

#### **Tishomingo Field Service Center**

1014 N. Kemp  
Tishomingo, OK 73460

**580-371-3219**

**855-421-7631 Fax2Mail**

Serving Johnston County & Johnston County Conservation District

#### NRCS Employees

Vacant

District Conservationist

580-371-3219 x108

Oliver, Allen M.

Soil Conservation Technician

580-371-3219 x109

#### District Employees

Vacant

District Secretary

580-371-3481 x101

---

#### **Tulsa Field Service Center**

6660 South Sheridan, Suite 120  
Tulsa, OK 74133-1768

**918-280-1596**

**855-421-7632 Fax2Mail**

Serving Tulsa County & Tulsa County Conservation District

#### NRCS Employees

Vacant

District Conservationist

918-280-1596 x101

Trujillo, Freddy J.

Soil Conservation Technician

918-280-1596 x107

#### District Employees

Parker, Gabrielael

District Secretary

918-280-1596 x100

Ragge', Michelle A.

District Manager

918-280-1596 x100

Grant, Scott D.

District Conservation Prog. Splst.

918-280-1596 x100

---

#### **Vinita Field Service Center**

235 W. Hope  
Vinita, OK 74301

**918-256-6882**

**855-421-7633 Fax2Mail**

Serving Craig County & Craig County Conservation District

#### NRCS Employees

Fields, Cambra K.

District Conservationist

918-256-6882 x111

Vacant

Soil Conservationist

918-256-6882 x112

Ritzman, Gregory L.

Soil Conservation Technician

918-256-6882 x113

#### District Employees

Callison, Laura Jo

District Secretary

918-256-6882 x101

---

## OKLAHOMA PERSONNEL DIRECTORY

### Field Service Centers and Conservation District Offices (Cont'd)

**Office Name / Address /**

**Personnel**

**Title**

**Telephone**

---

#### **Wagoner Field Service Center**

26114 State Hwy 51

Wagoner, OK 74467-8087

**918-485-4747**

**855-422-3702 Fax2Mail**

Serving Wagoner County & Wagoner County Conservation District

#### NRCS Employees

Vacant

District Conservationist

918-485-4747 x102

Lancaster, Jeffrey

Soil Conservation Technician

918-485-4747

#### District Employees

Vacant

District Programs Coordinator

918-485-4010 x101

---

#### **Walters Field Service Center**

705 W. Missouri

Walters, OK 73572

**580-875-3395**

**855-422-3704 Fax2Mail**

Serving Cotton County & Cotton County Conservation District

#### NRCS Employees

Davis, Jeffrey A.

District Conservationist

580-875-3395 x103

Bain, Austin

Soil Conservation Technician

580-875-3395 x104

#### District Employees

Rice, Fredia

District Secretary

580-875-2323 x101

---

#### **Watonga Field Service Center**

221 E. Main

Watonga, OK 73772-3832

**580-623-8501**

**855-422-3706 Fax2Mail**

Serving Blaine County & Blaine County Conservation District

#### NRCS Employees

Martin, Phillip J.

District Conservationist

580-623-8501 x110

Till, Michael

Soil Conservation Technician

580-623-8501 x108

#### District Employees

Vacant

District Secretary

580-623-4740 x101

Hoar, Scott

District Technician

580-623-4740 x101

---



## OKLAHOMA PERSONNEL DIRECTORY

### Field Service Centers and Conservation District Offices (Cont'd)

Office Name / Address /

Personnel

Title

Telephone

---

#### **Waurika Field Service Center**

1431 E. G Ave  
Waurika, OK 73573

**580-228-2352**  
**855-422-3707 Fax2Mail**

Serving Jefferson County & Jefferson County Conservation District

#### NRCS Employees

Nobile, Sandra  
Howell, Chadd A.

District Conservationist  
Soil Conservation Technician

580-228-2352 x106  
580-228-2352 x108

#### District Employees

Benton, Jane

District Secretary

580-228-2760 x101

---

#### **Weatherford Field Office**

300 S. Broadway (PO Box 505)  
Weatherford, OK 73096-0505

**580-772-7670**  
**580-772-7748 FAX**

Serving Custer and Washita Counties & Deer Creek Cons. District

#### District Employees

Harper, Christine  
Fry, Elton  
Hill, Kristi

District Manager  
District Equipment Manager  
Environmental Ed/Info Coord.

580-772-7670  
580-772-7670  
580-772-7670

---

#### **Wewoka Field Service Center**

1400 Indian Road  
Wewoka, OK 74884-9780

**405-257-2755**  
**855-423-4040 Fax2Mail**

Serving Seminole County & Seminole County Conservation District

#### NRCS Employees

James, Thomas E.  
Fox, James "Sam"

District Conservationist  
Soil Conservation Technician

405-257-2755 x105  
405-257-2755 x106

#### District Employees

Brinlee, Collene

District Programs Coordinator

405-257-5578 x101

---

## OKLAHOMA PERSONNEL DIRECTORY

### Field Service Centers and Conservation District Offices (Cont'd)

**Office Name / Address /**

**Personnel**

**Title**

**Telephone**

---

#### **Wilburton Native American Service Center**

1110 West Stovall Road  
Wilburton, OK 74578

**918-465-2181**

**855-423-4041 Fax2Mail**

Serving Latimer County & Latimer County Conservation District

#### NRCS Employees

Bryan, Michael D.

District Conservationist

918-465-2181 x 102

Jones, Liana

Soil Conservationist

918-465-2181

Martin, Tyson J.

Soil Conservation Technician

918-465-2181 x 103

#### District Employees

Hannebrink, Donna

District Manger

918-465-2181 x 100

---

#### **Woodward Field Service Center**

3300 Oklahoma Ave, Suite 800  
Woodward, OK 73801

**580-256-5320**

**855-423-4042 Fax2Mail**

Serving Woodward County & Woodward County Conservation District

#### NRCS Employees

Irving, Stanley J.

District Conservationist

580-256-5320 x128

Vacant

Soil Conservationist

580-256-5320 x129

Morehart, Kevin F.

Soil Conservation Technician

580-256-5320 x127

#### District Employees

Murlin, Stephanie

District Secretary

580-256-5320 x108

Covalt Jr., William D.

District Equip Manager

580-256-5320 x104

---

# OKLAHOMA PERSONNEL DIRECTORY

## Administrative and Technical Offices

**Office Name / Address /  
Personnel**

**Title**

**Telephone**

---

### Zone 1

#### Woodward Technical Service Office

3300 Oklahoma Ave, Suite 900  
Woodward, OK 73801

**580-256-5320 x6**  
**855-423-4042 Fax2Mail**  
Mobile 580-334-8056

#### Administrative Support

Halper, Melisa

Office Automation Clerk

580-256-5320 x6

#### Technical Specialists

Collier, Troy L.

Resource Soil Scientist

580-256-5320 x121

McKay, David R.

Resource Engineer

580-256-5320 x118

405-742-7405 Mobile

Shaffer, James E.

Resource Specialist

580-256-5320 x117

405-612-9327 Mobile

Sternitzke, Donald

(State Staff) Water Mgmt Specialist

580-256-5320 x120

Taylor, Brooke A.

Resource Con. (Program Liaison)

580-256-5320 x133

Frey, Larry E.

Civil Engineer Technician

580-227-4844x106

Headquartered at:

225 N. Main

Fairview, OK 73737

855-420-4532 Fax2Mail

---

### Zone 2

#### Claremore Technical Service Office

1900 West Will Rogers Circle, Suite A  
Claremore, OK 74017-1315

**918-341-3222**

**855-420-3965 Fax2Mail**

#### Administrative Support

Vacant

Office Automation Clerk

**918-341-3222**

918-341-3222 x115

#### Technical Specialists

Baker, Darryl D. "Buddy"

Civil Engineering Technician

**918-341-3241**

918-341-3241 x118

405-612-1710 Mobile

Boyett, Jacobson B.

Resource Soil Scientist

918-341-3241 x116

Ward, Matt A.

Resource Specialist

918-341-3241 x120

405-612-1713 Mobile

Coppock, Larry M.

Resource Engineer

918-341-3241 x119

405-612-9455 Mobile

Duke, Monica L.

Agricultural Engineer

918-341-3241 x117

405-612-1709 Mobile

Vacant

Resource Con. (Program Liaison)

918-341-3241 x121

405-612-1708 Mobile

---

## OKLAHOMA PERSONNEL DIRECTORY

### Administrative and Technical Offices (Cont'd.)

<u>Office Name / Address / Personnel</u>	<u>Title</u>	<u>Telephone</u>
<b>Zone 3</b>		
<b>Clinton Technical Service Office</b>		
1725 S. US HWY 183 South Suite 106 Clinton, OK 73601-2439		<b>580-323-3733</b> <b>855-420-3967 Fax2Mail</b>
<u>Administrative Support</u>		
Koch, Saska D	Office Automation Clerk	<b>580-323-3733</b> 580-323-3733 x 119
<u>Technical Specialists</u>		
Vacant	Civil Engineer	<b>580-323-2580</b> 580-323-2580 x 124
Jones, Ryan K.	Resource Specialist (Agron)	580-323-2580 x 130
Colvin, Charlie	Resource Engineer	580-323-2580 x 122
Jarrell, Larry D.	Resource Engineer	580-323-2580 x 120 405-742-0727 Mobile
Pietz-Jones, Brandy A.	Resource Con. (Program Liaison)	580-323-2580 x 134
Compton, Karen	Farm Bill Specialist	580-323-2580
Salisbury, Clay D.	Soil Scientist	580-323-2580 x 121
Scott, Jerry D.	Civil Engineering Technician	580-323-2580 x 123

---

## OKLAHOMA PERSONNEL DIRECTORY

### Administrative and Technical Offices (Cont'd.)

Office Name / Address / Personnel	Title	Telephone
<b>Zone 4</b>		
<b>McAlester Technical Service Office</b>		
2099 N. George Nigh Expressway McAlester, OK 74501		<b>918-423-8730 x 5</b> <b>855-421-2586 Fax2Mail</b>
<u>Administrative Support</u>		
Parkhurst, Linda G.	Office Automation Clerk	<b>918-423-8730 x 5</b> 918-423-8730 x 113
<u>Technical Specialists</u>		
Barner, Steve L.	WRP Specialist (State Staff)	<b>918-423-8730 x 5</b> 918-423-8730x 116 405-742-0580 Mobile
Bednark, Joanne	Farm Bill Specialist	918-423-8730
Newton, Jared S.	Civil Engineer Technician	918-423-8730 x 123 405-612-9348 Mobile
Mallory, Sean	Agricultural Engineer	918-423-8730 x 106 405-612-9027 Mobile
Pannell, R. Brent	Resource Con. (Program Liaison)	918-423-8730 x 115 405-612-9345 Mobile
Washburn, Curtis L.	Resource Engineer	918-423-8730 x 108 405-612-9154 Mobile
Vacant	Resource Specialist	405-379-3221 x 112 405-385-4443 Mobile
Woods Jr, Carl E.	Resource Soil Scientist	405-527-3160 405-612-9452 Mobile
Headquartered at:	1721 Hardcastle Blvd Purcell, OK 73080 855-421-3631 Fax2Mail	

## OKLAHOMA PERSONNEL DIRECTORY

### Administrative and Technical Offices (Cont'd.)

Office Name / Address / Personnel	Title	Telephone
--------------------------------------	-------	-----------

---

#### Zones 1 & 2

##### Perry Technical Service Office

1302 N. Highway 77  
Perry, OK 73077-2433

**580-336-5597**  
**855-421-3627 Fax2Mail**

##### Administrative Support

Halper, Melisa

Headquartered at:

Office Automation Clerk  
3300 Oklahoma Ave, Ste 900  
Woodward, OK 73801  
FAX 580-256-3859

580-256-5320 x 6

##### Technical Specialists

**580-336-5597**

Spitler, Hannah

Agricultural Engineer

580-336-5597 x116

Smith, Daniel R.

Resource Engineer

580-336-5597 x121  
405-743-9371 Mobile

Goforth, Michael D.

Civil Engineer Technician

580-336-5597

---

#### Zones 3 & 4

##### Pauls Valley Technical Service Office

16664 Butler Rd  
Pauls Valley, OK 73075

**405-238-6767**  
**855-421-3624 Fax2Mail**

##### Administrative Support

Koch, Saska D

Headquartered at:

Office Automation Clerk  
517 Prairie Chief  
Clinton, OK 73601-2439  
FAX 580-323-3161

580-323-3733

##### Technical Specialists

Dominguez, Lynnette A.

Resource Engineer

**405-238-6767 x 4**  
405-238-6767 x 124  
405-612-9338 Mobile

Vacant

McCarty, Richard E.

Agricultural Engineer

Civil Engineering Technician

405-238-6767 x 121

405-238-6767 x125

## OKLAHOMA PERSONNEL DIRECTORY

### Soil Survey Offices

Office Name / Address / Personnel	Title	Telephone
<b>Altus Soil Survey Office (MLRA)</b>		
3100 N. Main Altus, OK 73521		<b>580-482-4312</b> <b>580-482-6243 FAX</b>
Morley, Tyson G.	Soil Scientist, Team Leader	580-482-4312 x 115
Kemph, Tyler M.	Soil Scientist	580-482-4312 x 116
<hr/>		
<b>Stillwater Soil Survey Office (MLRA)</b>		
100 USDA Suite 206 Stillwater, OK 74074-2655		<b>405-742-1222</b> <b>405-742-1201 FAX</b>
Weinheimer, Jerry	Soil Scientist, Team Leader	405-742-1222
Dennis, Jeremy L.	Soil Scientist	405-742-1111
Walden, Colin M.	Range Mgmt Specialist	405-742-1223
<hr/>		
<b>Woodward Soil Survey Office (MLRA)</b>		
3300 Oklahoma Ave, Suite 900 Woodward, OK 73801		<b>580-256-5320 x7</b> <b>580-254-5236 FAX</b>
McGowen, Steven L.	Soil Scientist, Team Leader	580-256-5320 x138
Hobbs, Christopher P.	Soil Scientist	580-256-5320 x139

## OKLAHOMA PERSONNEL DIRECTORY

### Watershed Construction Offices

<u>Office Name / Address / Personnel</u>	<u>Title</u>	<u>Telephone</u>
<b>Pauls Valley Watershed Construction Office</b>		
16664 Butler Rd Pauls Valley, OK 73075		<b>405-238-6767</b> <b>855-421-3624 Fax2Mail</b>
<u>Administrative Support</u>		
Brandt, Kim Headquartered at:	Secretary 100 USDA, Suite 206 Stillwater, OK 74074-2655 FAX 405-742-1201	405-742-1256
<u>Watershed Office Staff</u>		
Lane, Richard L.	Acting Project Engineer	<b>405-238-6767 x5</b> 405-372-7071 x139
Finley, David A.	Construction Inspector	405-238-6767 x127
Glenn, Phillip	Construction Inspector	405-238-6767 x120
Vacant	Civil Engineer	405-238-6767 x5 405-612-2969 Mobile
Mauldin, Randy H.	Surveying Technician	405-238-6767 x131
Miller, Russell J.	Construction Inspector	405-238-6767 x122 405-612-0908 Mobile
Pearson II, Jackie L.	Civil Engineering Technician	405-238-6767 x130 405-238-4131 Mobile
White, Michael K.	Construction Inspector	405-238-6767 x126 405-612-0893 Mobile



## OKLAHOMA PERSONNEL DIRECTORY

### Watershed Construction Offices (Cont'd.)

Office Name / Address / Personnel	Title	Telephone
<b>Stillwater Watershed Construction Office</b>		
2600 S. Main, Suite D Stillwater, OK 74074		<b>405-372-7071 x7</b> <b>855-421-4637 Fax2Mail</b>
<u>Administrative Support</u>		
Brandt, Kim Headquartered at:	Secretary 100 USDA, Suite 206 Stillwater, OK 74074-2655 FAX 405-742-1201	405-742-1256
Lane, Richard L.	Acting Project Engineer	405-372-7071 x139
Vacant	Civil Engineering Technician	405-372-7071 405-742-0591 Mobile
Banning, Randy D.	Construction Inspector	405-372-7071 x133 405-743-9609 Mobile
Banning, Charles T.	Construction Inspector	405-372-7071 x132
Doyle, Ricky L.	Construction Inspector	405-372-7071 x134 405-743-9434 Mobile
Soderstrom, Gary D.	Construction Inspector	405-372-7071 x137 405-743-9613 Mobile

---

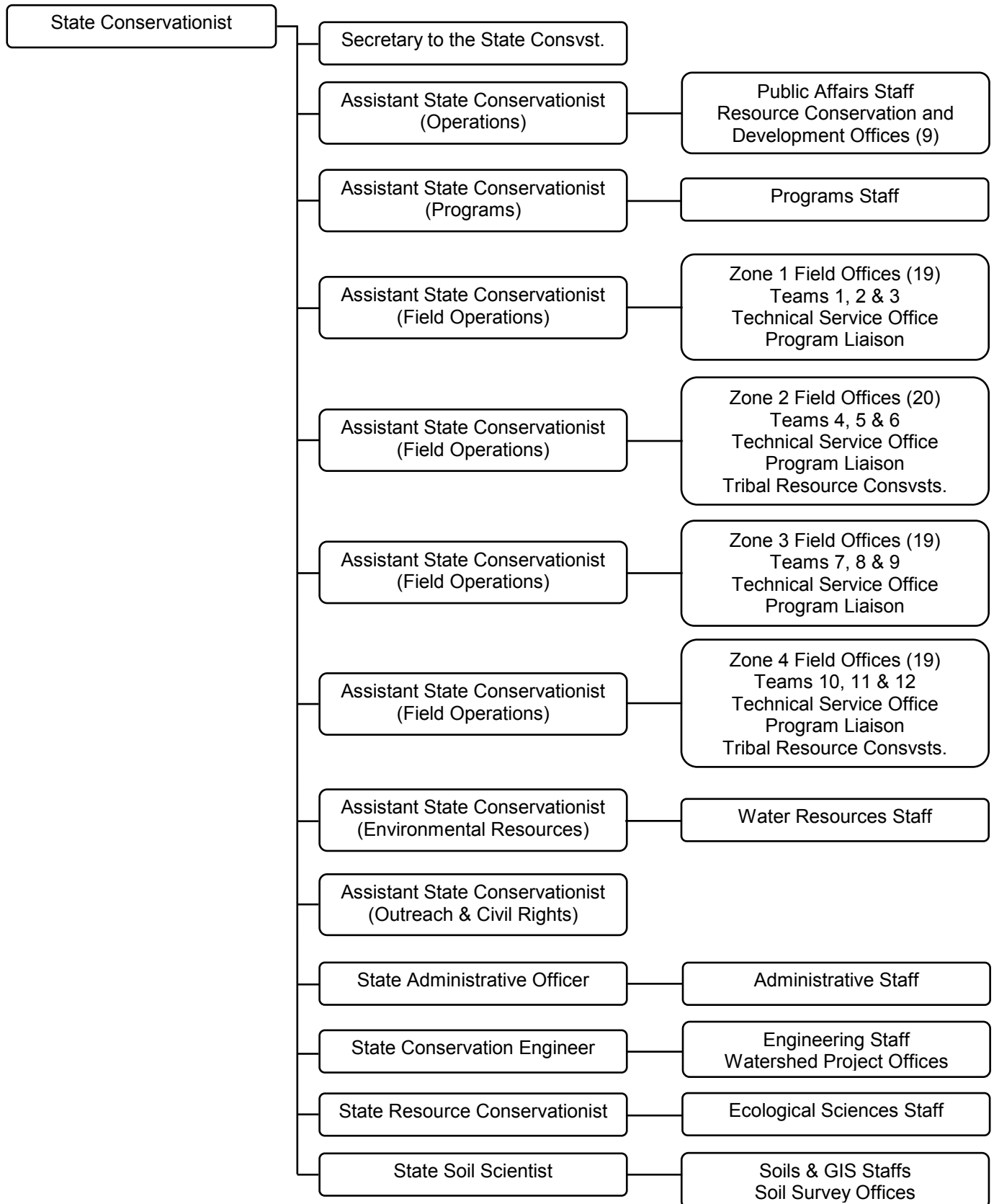
## OKLAHOMA PERSONNEL DIRECTORY

### Tribal Liaison Offices

Office Name / Address / Personnel	Title	Telephone
<b>Choctaw Nation</b> 2681 US Hwy 70 Hugo, OK 74743-1605		<b>580-326-7516</b>
Kelso, Derek L.	Tribal Resource Conservationist	580-326-7516 x113

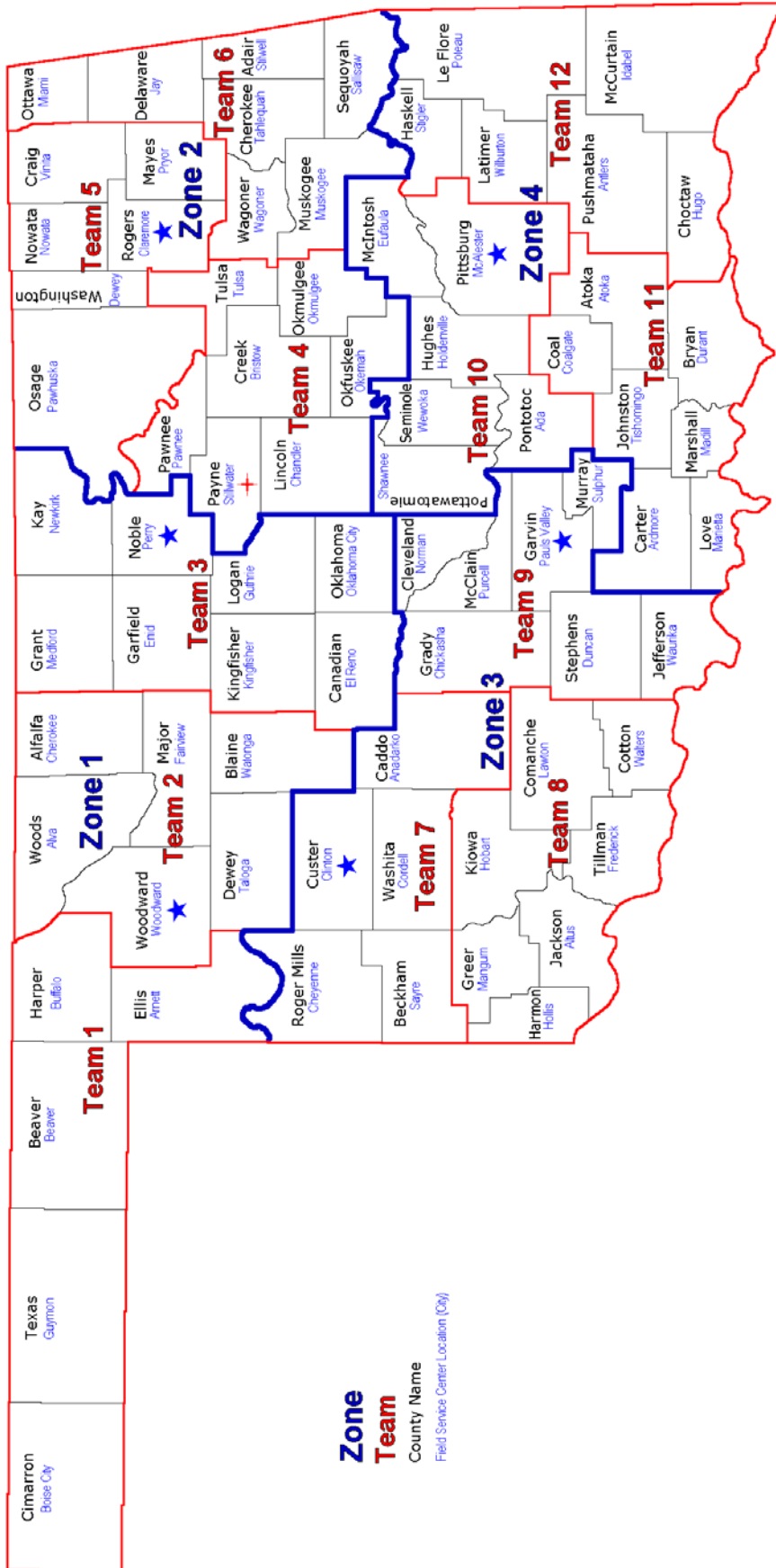
# OKLAHOMA PERSONNEL DIRECTORY

## Appendix A - Organization Chart



# OKLAHOMA PERSONNEL DIRECTORY

## Appendix B - Administrative Map



- State Office  
Stillwater
- Technical Offices  
Claremore  
Clinton  
McAlester  
Pauls Valley  
Perry  
Woodward

# OKLAHOMA PERSONNEL DIRECTORY

## Appendix C - Order of Succession

### Order of Succession for State Conservationist in Oklahoma

1. Wood II, James D. Assistant State Conservationist (Management & Strategy)
2. Vacant ASTC (Water Resources)
3. Zetterberg, Richard D. ASTC (Programs)
4. Glasgow, Steven J. State Resource Conservationist
5. Stoner, J. Chris State Conservation Engineer
6. Assistant State Conservationists (Field Operations) as available:
  - Kacir, Richard "Chad" ASTC (FO), Zone 2
  - Riley, Stacy M. ASTC (FO), Zone 1

### Alternate State Headquarters

1. Claremore Technical Service Office
2. Clinton Technical Service Office
3. McAlester Technical Service Office
4. Woodward Technical Service Office

### Order of Succession of State Conservation Engineer

When the State Conservation Engineer is absent from the office, the acting State Conservation Engineer will be in the order as follows:

<u>Name</u>	<u>Title</u>	<u>Office</u>	<u>Home</u>	<u>Mobile</u>
Stoner, J. Chris *	State Cons. Engr.	405-742-1260	405-377-1530	405-334-2926
Schneider, Scott E.	Ag Engineer	405-742-1259		
Jones, Monte J.	Civil Engineer	405-742-1261		
Cosyleon, Severo G.	Design Staff Head	405-742-1270	405-564-0690	405-714-1741

\* Oklahoma Watershed Incident Command System (ICS) Team Members

The State Conservation Engineer or the "acting for" designee is to be notified immediately in the event of any flow through the auxiliary spillways of project dams in accordance with National Engineering Manual OK504.12. In an emergency event related to a project dam where the persons listed above are not available, the following members of the Oklahoma Watershed ICS Team should be contacted:

<u>Name</u>	<u>Title</u>	<u>Office</u>	<u>Home</u>	<u>Mobile</u>
Vacant	Project Engineer	405-372-7071		
Caldwell, Larry W.	Water Res. Splst.	405-742-1254	405-372-8208	405-742-7810

# OKLAHOMA PERSONNEL DIRECTORY

## Appendix D - Boards and Committees

### Oklahoma Board of Technology

#### Member

State Conservation Engineer  
State Resource Conservationist  
State Soil Scientist

#### Incumbent

Stoner, J. Chris  
Glasgow, Steven J.  
Alspach, Steven D.

### Oklahoma Civil Rights Advisory Committee

#### **Chairperson**

Bradford, Cleon  
918-825-3673 x106

#### **Advisor**

Guerrero, Gilbert F.  
405-742-1207

#### **Asian-Pacific Program Manager**

Xiong, Merica  
918-253-4513 x108

#### **Zone 1 Representative**

Howard, Terrell D.  
580-885-7244 x108

#### **Black Emphasis Program Manager**

Buford, Joe D.  
405-273-2076 x100

#### **Zone 2 Representative**

Wagner, Liana  
405-372-7071 x114

#### **Disability Program Manager**

McNeff, Joshua  
580-362-3362

#### **Zone 3 Representative**

Irby, Matthew  
580-832-3275 x116

#### **Federal Womens Program Manager**

Lane, Andrea R.  
580-832-3275 x116

#### **Zone 4 Representative**

Kelso, Derek L.  
580-326-7516 x 113

#### **Lesbian, Gay, Bisexual, Transgender Program Manager**

McNeff, Joshua  
580-362-3362

#### **Hispanic Program Manager**

Dominguez, Lynnette A.  
580-256-5320 x128

#### **Native American Program Manager**

Parker, Cody  
918-544-2401 x102

#### **Veterans Program Manager**

Jordan, John D.  
918-253-4513 x108

### State Field Office Technical Guide Committee

#### Representing

Engineering  
Ecological Sciences & Conservation Planning  
Information Technology  
Soils  
Water Resources

#### Member

Vacant  
Glasgow, Steven J.  
Vacant  
Vacant  
Burns, April D.

# OKLAHOMA PERSONNEL DIRECTORY

## Zone Technical Committee Chairpersons

<u>Zone</u>	<u>Chairperson</u>	<u>Headquarters</u>
Claremore	Vacant	Claremore TSO
Clinton	Vacant	Clinton TSO
McAlester	Sanders, Warren	Marietta FSC
Woodward	Clark, Paul D.	Taloga FSC

# OKLAHOMA PERSONNEL DIRECTORY

## Appendix E - Quick Reference

<u>Office</u>	<u>Telephone</u>	<u>Address</u>	<u>City</u>
State Office	405-742-1204	100 USDA Suite 206	Stillwater
1890 College Liaison	405-466-6124	Ag Research Ed & Ext Bldg	Langston
<u>Technical Offices</u>			
Altus Soil Survey	580-482-4312 x4	3100 N. Main	Altus
Claremore Tech Support Office	918-341-3276 x5	1900 W. Will Rogers Circle	Claremore
Clinton Tech Support Office	580-323-3733	517 Prairie Chief	Clinton
McAlester Tech Support Office	918-423-8730	2099 N. George Nigh Expy	McAlester
Pauls Valley TSO & WO	405-238-6767 x5	20118 S. Indian Meridian Rd	Pauls Valley
Perry Tech Support Office	580-336-5597 x5	1302 N Highway 77	Perry
Stillwater Soil Survey	405-742-1222	100 USDA Suite 206	Stillwater
Stillwater Watershed Office	405-372-7071	2600 S. Main Suite C	Stillwater
Woodward Soil Survey	580-256-5320 x7	3300 Oklahoma	Woodward
Woodward Tech Support Office	580-256-5320 x6	3300 Oklahoma, Suite 900	Woodward
<u>Native American Liaison Offices</u>			
Choctaw Nation	580-326-7516	2681 US Hwy 70	Hugo
<u>Field Offices</u>			
Central North Canadian River CD	405-884-2383	129 E. Main	Geary
Cimarron Valley CD	580-822-3255	218 N. 5 <sup>th</sup>	Okeene
Deer Creek CD	580-772-7670	300 S. Broadway	Weatherford
Greer County CD	580-782-3581	2302 N. Louis Tittle	Mangum
Konawa CD	580-925-3117	102 E. 1 <sup>st</sup>	Konawa
Mountain View CD	580-347-2220	318 Main	Mt. View
North Caddo CD	405-542-3205	201 E. Main	Hinton
Shawnee CD	405-275-5220	127 N. Park	Shawnee
Talihina CD	918-567-2956	PO Box 429	Talihina
West Caddo CD	405-643-5102	1/8 <sup>th</sup> mile north of Ft Cobb	Fort Cobb
Woods County CD	580-621-3251	403 Main	Freedom



# OKLAHOMA PERSONNEL DIRECTORY

## Appendix E – Quick Reference (Cont'd)

### Field Service Centers & Native American Service Centers

<u>City</u>	<u>Telephone</u>	<u>Address</u>	<u>City</u>	<u>Telephone</u>	<u>Address</u>
Ada	580-332-3905	1328 Craddock Road	Mangum	580-782-2787	116 E. Pierce
Altus	580-482-4312	3100 N Main	Marietta	580-276-3201	1215 N. Highway 77
Alva	580-327-3136	927 W. Oklahoma	McAlester	918-423-4073	2099 N. George Nigh Expw
Anadarko	405-247-3303	1001 W. Petree Road	Medford	580-395-2324	624 N. Hiway 81
Antlers	580-298-3281	510 Highway 271 N.	Miami	918-542-4576	630 E. Steve Owens
Ardmore	580-223-7277	2428 Autumn Run	Muskogee	918-682-8831	3001 Azalea Park Dr
Arnett	580-885-7244	155 E. Renfrow	Newkirk	580-362-3362	5501 N. Pleasantview
Atoka	580-889-2554	2867 S. Mississippi	Norman	405-321-7766	2600 Van Buren, Suite 2601
Beaver	580-625-3302	106 W. First	Nowata	918-273-3074	123 S. Ash (Hiway169)
Boise City	580-544-2401	210 S. Cimarron	Okemah	918-623-0077	121 Sertco Road
Bristow	918-367-2113	128 E. 3 <sup>rd</sup>	Oklahoma City	405-521-1332	4850 N. Lincoln Blvd. Ste B
Buffalo	580-735-2033	# 2 Miles Addition	Okmulgee	918-756-0850	719 E. 8 <sup>th</sup>
Chandler	405-258-1405	201 N. Sandy Lane	Pauls Valley	405-238-6767	20118 S. Indian Meridian Rd
Cherokee	580-596-2625	401 W. Cherokee	Pawhuska	918-287-3570	1000 W. Main
Cheyenne	580-497-2293	301 E. Broadway	Pawnee	918-762-2736	500 Harrison St.
Chickasha	405-224-1381	828 W. Choctaw Ave.	Perry	580-336-5597	1302 N. Highway 77
Claremore	918-341-3276	1900 W. Will Rogers Cir.	Poteau	918-647-4800	109 Kerr Blvd
Clinton	580-323-0366	1508 Neptune Drive	Pryor	918-825-3673	4238 N. E. 1st
Coalgate	580-927-2182	106 E. Post	Purcell	405-527-3160	1726 N. Green
Cordell	580-832-3275	1505 N. Glenn English	Sallisaw	918-775-6577	2606 S. Kerr Blvd.
Dewey	918-534-2720	205 E. 12 <sup>th</sup>	Sayre	580-928-3113	902 NE Highway 66, Suite C
Duncan	580-255-7676	3910 W. Beech	Shawnee	405-273-2076	201 N. Bell
Durant	580-924-4131	200 Gerlach Drive	Stigler	918-967-2488	1005 W. Main
El Reno	405-262-1958	1625 E. Hwy. 66	Stillwater	405-372-7071	2600 S. Main
Enid	580-237-4321	1216 W. Willow	Stilwell	918-696-7612	Route 1 Box 333
Eufaula	918-689-2301	417738 E. 1210 Rd	Sulphur	580-622-3913	3490 Hiway 7 West
Fairview	580-227-4844	225 N. Main	Tahlequah	918-456-1924	918 West Choctaw
Frederick	580-335-2817	1120 S. Main	Taloga	580-328-5321	306 S. Broadway
Guthrie	405-282-1695	2227 Iron Mound Dr	Tishomingo	580-371-3219	1014 N. Kemp
Guymon	580-338-7379	601 S. E. Fifth	Tulsa	918-280-1596	5401 S. Sheridan
Hobart	580-726-3347	802 W. 11 <sup>th</sup>	Vinita	918-256-6882	235 W. Hope
Holdenville	405-379-3221	419 E. Highway 270	Wagoner	918-485-4747	26114 State Hwy 51
Hollis	580-688-3456	320 N. Main	Walters	580-875-3395	705 W. Missouri
Hugo	580-326-7516	2681 HWY 70	Watonga	580-623-8501	221 E. Main
Idabel	580-286-2574	201 N. Central Ave.	Waurika	580-228-2352	13 <sup>th</sup> and G Street
Jay	918-253-4513	319 S. 6 <sup>th</sup>	Wewoka	405-257-2755	1400 Indian Road
Kingfisher	405-375-3200	1600 S. 13 <sup>th</sup>	Wilburton	918-465-2181	1110 W. Stovall Road
Lawton	580-353-1564	1606 NW Lawton	Woodward	580-256-5320	3300 Oklahoma Ave, Ste 800
Madill	580-795-3148	800 Cedar Drive			

# OKLAHOMA PERSONNEL DIRECTORY

## Index

<p>..... 11, 33</p> <p>Abrahamsen, Kevin D. ....2</p> <p>Acker, Frank .....22</p> <p>Ada FSC ..... 10</p> <p>Adair Co. CD.....33</p> <p>Adair County .....33</p> <p>Administrative Staff.....2</p> <p>Alfalfa Co. CD ..... 14</p> <p>Alfalfa County ..... 14</p> <p>Allen, Christopher L. .... 11</p> <p>Allen, Gregory C. .... 14</p> <p>Allen, Gregory D. ....22</p> <p>Alspach, Steven D. ....5, 50</p> <p>Altus FSC.....10</p> <p>Altus SSO .....43</p> <p>Alva FSC.....10</p> <p>Anadarko FSC ..... 11</p> <p>Anderson-Osobu, Anaquette.....24</p> <p>Angles, Eric.....8</p> <p>Antlers FSC ..... 11</p> <p>Arbuckle CD.....11</p> <p>Ardmore FSC.....11</p> <p>Armstrong, Robin.....10</p> <p>Arnett FSC ..... 12</p> <p>Arnold, LeRoy K.....29</p> <p>Ashbrenner, Jill L. ....23</p> <p>Ashcraft, Heather L.....14</p> <p>Atoka Co. CD.....12</p> <p>Atoka County .....12</p> <p>Atoka FSC .....12</p> <p>Bagby, Robert N. ....33</p> <p>Bailey, Jennifer .....29</p> <p>Bain, Austin.....36</p> <p>Baker, Darryl D. ‘Buddy’.....39</p> <p>Balch, Jerry D. ....25</p> <p>Banning, Charles T. ....45</p> <p>Banning, Randy D.....45</p> <p>Barner, Axel .....26</p> <p>Barner, Steve L.....4, 41</p> <p>Beaver Co. CD.....12</p> <p>Beaver County .....12</p> <p>Beaver FSC .....12</p> <p>Beckham County.....32</p> <p>Bednark, Joanne.....41</p> <p>Bennett, Andrew C.....4</p> <p>Benton, Jane.....37</p> <p>Benton, Mark W.....16</p> <p>Best, Christopher M. ....17</p> <p>Bierig, Cindy J.....18</p> <p>Bivens, Christopher.....8</p> <p>Blaine Co. CD .....36</p> <p>Blaine County.....19, 21, 28, 36</p>	<p>Blakley, Jim.....17</p> <p>Bogle, Laurie A. ....14</p> <p>Boise City FSC.....13</p> <p>Bone, Betty J.....25</p> <p>Boswell, Teresa D. ....13</p> <p>Bowler, Rishell F. ....26</p> <p>Boyett, Jacobson B. ....39</p> <p>Bradford, Cleaon.....31, 50</p> <p>Bradford, Glenna.....12</p> <p>Brandt, Kim .....3, 44, 45</p> <p>Bratten, Coleta .....34</p> <p>Brewster Deborah .....23</p> <p>Brewster, Debbie.....17</p> <p>Brinlee, Collene.....37</p> <p>Bristow FSC .....13</p> <p>Brock, Will M.....21</p> <p>Brooks, Angie.....23</p> <p>Brorsen, Dennis R.....30</p> <p>Brown, Edith.....16</p> <p>Brown, Justin S. ....30</p> <p>Bryan CD .....17</p> <p>Bryan County .....17</p> <p>Bryan, Michael D.....38</p> <p>Bryan, Whitney J.....12</p> <p>Buffalo FSC.....13</p> <p>Buford, Joe D.....2, 50</p> <p>Buford, Wynea .....31</p> <p>Burns, April D.....1, 5, 50</p> <p>Burns, Brandon K.....23</p> <p>Burrows, Jeremy .....15</p> <p>Caddo County .....11, 19, 21</p> <p>Caldwell, Larry W.....7, 49</p> <p>Callison, Laura Jo .....35</p> <p>Cambron, Robert E. ....25</p> <p>Campbell, Eddie P .....16</p> <p>Canadian County .....17, 19, 21</p> <p>Caney Valley CD.....16</p> <p>Carter County.....11</p> <p>Carter, Lovie L. ....29</p> <p>Caswell, Geary.....22</p> <p>Central North Canadian River CD .....19</p> <p>Chandler FSC .....14</p> <p>Chandler, Brandon .....29</p> <p>Chandler, Larry .....23</p> <p>Checotah CD .....18</p> <p>Cherokee Co. CD.....34</p> <p>Cherokee County .....34</p> <p>Cherokee FSC .....14</p> <p>Cheyenne FSC.....14</p> <p>Chickasha FSC .....15</p> <p>Choctaw County.....22</p> <p>Choctaw Nation.....46</p>
--	--

## OKLAHOMA PERSONNEL DIRECTORY

Christian, Patti .....	31	Dennis, Jeremy L. ....	43
Cimarron Co. CD .....	13	Dewey Co. CD .....	34
Cimarron County.....	13	Dewey County.....	34
Cimarron Valley CD .....	28	Dewey FSC.....	16
Claremore FSC.....	15	Dimitratos, Belinda .....	10
Claremore TSO.....	39	Dixon, James R.....	16
Clark, Jo Etta .....	26	Dominguez, Lynnette A. ....	42, 50
Clark, Paul D.....	34, 51	Dotson, Robert D. ....	14
Clemens, Christopher .....	13	Doyle, Ricky L. ....	45
Cleveland Co. CD .....	27	Duke, Monica L. ....	39
Cleveland County.....	27	Dukes, Roderick L.....	29
Cline, Joey .....	8	Duncan FSC .....	17
Clinton FSC .....	15	Durant FSC.....	17
Clinton TSO .....	40	E. Woods Co. CD.....	10
Coal Co. CD.....	16	East Canadian County CD .....	17
Coal County .....	16	Ecological Sci & Cons Planning Staff .....	2
Coalgate FSC .....	16	Ediger, Judith Lynn .....	25
Cole, Gerry L. ....	2	El Reno FSC .....	17
Collier, Troy L. ....	39	Elliott, Matthew.....	33
Collins, Danna.....	29	Ellis Co. CD.....	12
Collyar, Dean C.....	29	Ellis County .....	12
Colvin, Charlie.....	40	Ellis, James D. ....	33
Colwell, N. Cord .....	15	Engineering Staff .....	3
Comanche Co. CD.....	24	Enid FSC.....	18
Comanche County .....	24	Etheredge, Lori .....	5
Compton, Karen.....	40	Eufaula FSC.....	18
Conelius, Lesley B. ....	32	Evans III, Lloyd R.....	14
Cook, Roy W. ....	13	Fain, Bobby.....	29
Cook, Shelia .....	8	Fairview FSC.....	18
Coppock, Larry M.....	39	Fanning, Kelly .....	14
Cordell FSC .....	16	Farris, Bullit M. ....	34
Cosyleon, Severo G.....	3, 49	Faulkenberry, Brandon.....	30
Cotton Co. CD .....	36	Fenton, Audra Q. ....	32
Cotton County.....	36	Fields, Cambra K. ....	35
Covalt Jr., William D. ....	38	Fields, Grayson.....	20
Craig Co. CD .....	35	Financial Management .....	2
Craig County.....	35	Finley, David A.....	44
Crall, Edward .....	19	Fitzpatrick, Connie L. ....	1
Crane, Cara .....	2	Fleaharty, Clint E.....	31
Creek Co. CD .....	13	Fleming, Shawn D.....	32
Creek County.....	13	Fort Cobb Field Office .....	19
Crouch, Carol V. ....	1	Foulks, Sarah.....	4
Curry, Tammy .....	33	Fowler, Dennis E.....	14
Custer Co. CD .....	15	Fox, James .....	37
Custer County.....	15, 37	Franke, Daniel J.....	23
Davied, Steven.....	26	Frederick FSC.....	19
Davis, Clayton P. ....	15	Freedom Field Office.....	19
Davis, Dana L. ....	17	Freundt, Paul .....	20
Davis, Jeffrey A.....	36	Frey, Larry E. ....	39
Deen, Danica .....	31	Garabedian, Linda D. ....	2
Deer Creek CD .....	37	Garfield Co. CD.....	18
Delaware Co. CD.....	23	Garfield County .....	18
Delaware County .....	23	Garvin Co. CD.....	29

## OKLAHOMA PERSONNEL DIRECTORY

Garvin County.....	29	Henning, Susan.....	27
Gay, Don L.....	32	Hickman, Rebecca L.....	2
Geary Field Office.....	19	Hill Jr., James L.....	20
Gennaro, Vicky.....	22	Hinton Field Office.....	21
Geographic Information Systems.....	5	Hoar, Scott.....	36
Gerhardt, Cindy.....	15	Hobart FSC.....	21
Gibbs, Robert.....	15	Hobbs, Christopher P.....	43
Gilpatrick, Donna.....	24	Holdenville FSC.....	21
Glasgow, Steven J.....	2, 49, 50	Holder, Tammie.....	30
Glasgow, Valerie G.....	3	Holkum, Lil.....	7
Glenn, Phillip.....	44	Hollis FSC.....	22
Goforth, Michael D.....	42	Hood, Larry R.....	17
Goforth, Sharla K.....	2	Horton, Clay J.....	10
Goodwin, Babette B.....	2	Horton, Robert C.....	27
Grady Co. CD.....	15	Howard, Terrell D.....	12, 50
Grady County.....	15	Howell, Chadd A.....	37
Grant Co. CD.....	25	Hudson, Maribeth.....	24
Grant County.....	25	Hudson, Shirley.....	26
Grant, Scott D.....	35	Hughes Co. CD.....	21
Green, Clancy Jo.....	20	Hughes County.....	21
Green, Jordan.....	17	Hughes, Jeremy L.....	12
Green, Tiffany A.....	15	Hugo FSC.....	22
Greenwood, Todd.....	8	Human Resources.....	2
Greer Co. CD.....	24	Hungerford, David M.....	1
Greer County.....	24	Idabel FSC.....	22
Greuel, William.....	14	Igo, Russ M.....	24
Grey, Lisa.....	30	Imler, Iris.....	13
Griffin, Marcus.....	27	Inman, Andrew R.....	33
Griffith, Grant S.....	21	Inmon, Rebecca.....	28
Guerrero, Gilbert F.....	1, 50	Irby, Matthew.....	31, 50
Guthrie FSC.....	20	Irving, Stanley J.....	38
Guy, Stephanie L.....	32	Isabell, Amy.....	25
Guymon FSC.....	20	Jackson Co. CD.....	10
Hall, Joshua.....	18	Jackson County.....	10
Halper, Melisa.....	39, 42	Jackson, Robert Dean.....	16
Halper, Milisa.....	6	James, Thomas E.....	37
Hamilton, Bradley.....	25	Janda, Chris E.....	27
Hannebrink, Donna.....	34, 38	Janzen, Mark.....	2
Hannon, David.....	22	Jarrell, Larry D.....	40
Hannon, Valerie.....	17	Jay FSC.....	23
Harjo, Shane J.....	18	Jefferson Co. CD.....	37
Harmon Co. CD.....	22	Jefferson County.....	37
Harmon County.....	22	Jensen, Janette M.....	2
Harper Co. CD.....	13	Johnson, Randy L.....	11
Harper County.....	13	Johnston Co. CD.....	35
Harper, Christine.....	37	Johnston County.....	35
Harris, David.....	9	Jones, Andrea G.....	21
Harris, James M.....	18	Jones, Liana.....	38
Harrison Jr, James W.....	30	Jones, Monte J.....	3, 49
Hasenmyer, Sarah.....	3	Jones, Nicholas W.....	13
Haskell Co. CD.....	32	Jones, Ryan K.....	40
Haskell County.....	32	Jones, Tim.....	4
Hathorne, Robert.....	5	Jones, Travis.....	15

## OKLAHOMA PERSONNEL DIRECTORY

Jordan, John D. ....	23, 50	Mallory, Sean .....	41
Kacir, Richard .....	1, 49	Management & Strategy Staff .....	3
Kaiser, Sharon G. ....	5	Management Services.....	2
Kaufman, Anita L. ....	33	Mangum FSC.....	24
Kay Co. CD .....	27	Mann, Jonathan .....	16
Kay County .....	27	Manning, John.....	29
Kelley, Gary Steve .....	15	Maples, J. Mark.....	28
Kelso, Derek L. ....	22, 46, 50	Marietta FSC.....	25
Kemph, Tyler M.....	43	Markland, Shawnee.....	12
Kersten, Ted D.....	5	Marshall Co. CD.....	24
Kester, Eugene .....	33	Marshall County .....	24
Ketch, Joshua .....	3	Marshall, Alisa.....	17
Ketchum, Tommy.....	30	Martin, Phillip J.....	36
Kiamichi CD .....	22	Martin, Tyson J.....	38
Kingfisher Co. CD .....	23	Mathis, Stacey H.....	12
Kingfisher County.....	23, 28	Mauldin, Randy H.....	44
Kingfisher FSC.....	23	Mayes Co. CD.....	31
Kiowa Co. CD .....	21	Mayes County .....	31
Kiowa County.....	21, 26	McAlester FSC.....	25
Klinger, Kanten .....	26	McAlester TSO.....	41
Koch, Saska.....	6	McCarty, Richard E.....	42
Koch, Saska D.....	40, 42	McClain Co. CD .....	31
Konawa CD.....	23	McClain County.....	31
Konawa Field Office.....	23	McClintock, Clancy.....	3
Kraft, K. C. ....	5	McCurtain County .....	22
Kraus, Vivian.....	20	McElhaney, Heather.....	26
Kuntz, David .....	24	McGough, David L. ....	13
Lamb, Julie R.....	27	McGowen, Steven L.....	43
Lancaster, Jeffrey .....	36	McIntosh Co. CD.....	18
Lane, Andrea R.....	3, 50	McIntosh County .....	18
Lane, Richard L. ....	5, 44, 45	McKay, David R. ....	39
Langston, Rodger D.....	16	McNeely, Pamela D.....	8
Lanning, Lance .....	24	McNeff, Joshua .....	28, 50
Latimer Co. CD .....	38	McVeigh, Jami B. ....	25
Latimer County .....	34, 38	Medford FSC.....	25
Lawton FSC.....	24	Mefford, Marti.....	23
LeFlore Co. CD .....	30	Messenger, Alan R.....	20
LeFlore County .....	30, 34	Metz, Danielle D.....	11
Levesque, Gina.....	34	Meyer, Daniel .....	30
Lincoln Co. CD.....	14	Meyers, Jody.....	4
Lincoln County .....	14	Miami FSC .....	26
Little River CD.....	22	Milam, David B.....	12
Littlechief, Paula .....	11	Miller, Brandi L. ....	10
Logan Co. CD .....	20	Miller, Russell J. ....	44
Logan County .....	20	Mills, Joyce L.....	11
London-Ward, Christine .....	27	Mitchell, Tashina C.....	33
Love Co. CD .....	25	Montgomery, Lisa.....	15
Love County.....	25	Moore, Glenda F. ....	19
Lowman, Andrew T.....	23	Moore, Melissa J. ....	10
Lyons, Gregory .....	29	Morehart, Kevin F.....	38
Madill FSC .....	24	Morley, Tyson G.....	43
Major Co. CD .....	18	Mosteller, Jennifer D. ....	29
Major County .....	18	Mountain View CD.....	26

## OKLAHOMA PERSONNEL DIRECTORY

Mountain View Field Office .....	26	Parker, Gabriela.....	35
Mumford, Payton.....	17	Parkhurst, Linda G.....	6, 41
Murlin, Stephanie .....	38	Patrick, Russell D.....	16, 27
Murphy, Jacy.....	34	Pauls Valley FSC .....	29
Murray Co. CD .....	33	Pauls Valley TSO .....	42
Murray County .....	33	Pauls Valley WO.....	44
Muskogee Co. CD.....	26	Pawhuska FSC .....	29
Muskogee County.....	26	Pawnee Co. CD .....	30
Muskogee FSC .....	26	Pawnee County.....	30
Neal, Birdie D.....	2	Pawnee FSC .....	30
Neighbors, Tegan .....	29	Payne Co. CD .....	33
Neumeyer, Donna R. ....	30	Payne County.....	33
Newkirk FSC .....	27	Payne, Lisa A.....	22
Newton, Jared S. ....	41	Pearson II, Jackie L.....	44
Niece, Rita .....	19	Perry FSC .....	30
Nighswonger, Diana.....	10	Perry TSO .....	42
Nixon, Kari .....	19	Peterson, J. D'Ann .....	20, 28
Nobile, Sandra .....	37	Peterson, Russell W. ....	30
Noble Co. CD.....	30	Pietz-Jones, Brandy A.....	40
Noble County .....	30	Pittsburg Co. CD .....	25
Norem, Julie.....	21	Pittsburg County.....	25
Norman FSC.....	27	Pontotoc Co. CD .....	10
North Caddo CD .....	21	Pontotoc County.....	10
North Fork of Red River CD .....	32	Posey, Brian.....	9
Nowata Co. CD .....	27	Poteau FSC .....	30
Nowata County .....	27	Pottawatomie County .....	32
Nowata FSC .....	27	Pottawatomie County .....	23
Nowlin, Lea Ann.....	23	Potts, Dewayne.....	8
O'Neill, Gary L. ....	1	Price, Jerrod T. ....	11
OCC - State Office.....	7	Programs Staff.....	4
Okeene Field Office .....	28	Pruitt, Niecca R. ....	31
Okemah FSC .....	28	Pryor FSC .....	31
Okfuskee Co. CD.....	28	Public Affairs Staff.....	5
Okfuskee County .....	28	Purcell FSC.....	31
Oklahoma City FSC .....	28	Pushmataha Co. CD .....	11
Oklahoma Co. CD.....	28	Pushmataha County.....	34
Oklahoma County .....	28	Pushmataha County.....	11
Okmulgee Co. CD.....	29	Qualls, Andrew T.....	26
Okmulgee County .....	29	Ragge, Michelle A. ....	35
Okmulgee FSC .....	29	Ramerth, Eric.....	25
Oliphant, Shelly D. ....	10	Ramming, Michael J.....	23
Oliver, Allen M.....	35	Reavis, Brandon L.....	2
Oliver, Melanie D. ....	4	Rice, Fredia.....	36
Osage Co. CD .....	29	Rich, Richard .....	32
Osage County.....	29	Richard, Christina.....	13
Ottawa Co. CD.....	26	Riley, Stacy M. ....	1, 49
Ottawa County .....	26	Ritzman, Gregory L.....	35
Owen, Nick R.....	17	Roberts, Michael D.....	18
Owens, James C.....	17	Robertson, Greg .....	22
Pace, J.Scott.....	22	Rodriguez, Delfino.....	13
Pannell, R. Brent.....	41	Roger Mills County.....	14
Parker, Barry A. ....	11	Rogers Co. CD.....	15
Parker, Cody.....	33, 50	Rogers County .....	15

## OKLAHOMA PERSONNEL DIRECTORY

Rogers Jr., Charles C. ....	25	Stinchcomb Jr, Joe E. ....	14
Rose, Christine .....	23	Stoll, Jason .....	15
Ross, Ken .....	14	Stone, Caleb J. ....	2
Salisbury, Clay D. ....	40	Stone, Lonette.....	27
Sallisaw FSC.....	31	Stoner, J. Chris .....	3, 49, 50
Sams, Michael .....	2	Sullins, Anthony, Lee.....	32
Sanders, Warren R. ....	25	Sulphur FSC .....	33
Sauer, Lisa.....	8	Surber, Dee.....	15
Sayre FSC .....	32	Swartwood, Jerry W. ....	14
Scheihing, Katy .....	19	Tahlequah FSC.....	34
Schmidt, Kathy.....	20	Talihina CD .....	34
Schneider, Scott E. ....	3, 49	Talihina Field Office .....	34
Schreiner, J. Kirk .....	24	Taloga FSC.....	34
Schreiner, Tony R. ....	19	Tate, Kyle.....	25
Schultz, Brenda.....	18	Taylor, Brandon.....	10
Scott, Jerry D. ....	40	Taylor, Brooke A. ....	39
Seminole Co. CD .....	37	Teague, Melissa R. ....	22
Seminole County.....	23, 37	Teehee, Ashley .....	33
Sequoyah Co. CD.....	31	Texas Co. CD .....	20
Sequoyah County .....	31	Texas County.....	20
Sexton, Candye .....	28	Theis, Becky .....	24
Shaffer, James E. ....	39	Thompson, Melissa .....	30
Shaw, Eric.....	22	Till, Michael .....	36
Shawnee CD.....	32	Tillman Co. CD.....	19
Shawnee Field Office.....	32	Tillman County .....	19
Shawnee FSC.....	32	Tishomingo FSC .....	35
Sheik, Michael J. ....	18	Tomlinson, Lydia .....	26
Shotts, Kevin N. ....	15	Tripp, Trampas W. ....	33
Sites, Cassandra L.....	3	Trujillo, Freddy J.....	35
Skiles, Don.....	10	Tucker, Nelda J.....	32
Slowik, Victor W. ....	3	Tulsa Co. CD .....	35
Smith, Daniel R. ....	42	Tulsa County.....	35
Smith, Jennifer S. ....	22	Tulsa FSC .....	35
Soderstrom, Gary D. ....	45	Turner, Denise B. ....	14
Soil Science Staff.....	5	Upper Washita CD .....	14
South Caddo Co. CD .....	11	USDA / OCIO ITS – Oklahoma Staff.....	8
Sparks, Jolene .....	30	USDA/NRCS Liaison Office .....	7
Spears, Kevin S. ....	24	Utleigh, Gary W.....	5
Spencer, James .....	8	Veselak, Sherrye M.....	2
Spitler, Hannah .....	42	Vielma, Jose A. ....	30
Stafford, Paula .....	21	Vinita FSC.....	35
Stanford, Amanda.....	21	Wagner, Liana .....	50
State Conservationists Staff.....	1	Wagoner Co. CD.....	36
Stephens Co. CD.....	17	Wagoner County.....	36
Stephens County .....	17	Wagoner FSC.....	36
Stephens, Karla R.....	25	Walden, Colin M.....	43
Sternitzke, Donald.....	3, 39	Walker, Kim R. ....	15, 27
Stewart, Janet M. ....	7	Walters FSC .....	36
Stigler FSC .....	32	Waltman, Brenda .....	27
Stillwater FSC .....	33	Ward Jimmy.....	32
Stillwater SSO.....	43	Ward, Cindy .....	29
Stillwater WO .....	45	Ward, Cynthia D.....	11
Stilwell FSC.....	33	Ward, Matt W.....	39

## OKLAHOMA PERSONNEL DIRECTORY

Ware, Dennis.....29	Willmon, Laura.....18
Warren, Ronnie J.....10	Wilson, James R.....22
Warren, Wade A.....30	Winslett, Charles A.....19
Washburn, Curtis L.....41	Wood II, James D.....3
Washington County.....16	Wood II, James D.....1, 5, 49
Washita Co. CD.....16	Wood, Kevin.....23
Washita County.....37	Woods County.....10
Washita County.....16, 26	Woods County.....19
Water Resources Staff.....5	Woods County CD.....19
Watonga FSC.....36	Woods Jr, Carl E.....41
Waurika FSC.....37	Woodward Co. CD.....38
Weatherford Field Office.....37	Woodward County.....38
Weathers, Amy.....21	Woodward FSC.....38
Weaver Jr, William E.....31	Woodward SSO.....43
Weinheimer, Jerry.....43	Woodward TSO.....39
West Caddo CD.....19	Worley, Jacob W.....18
West, Rylan J.....27	Worley, Lisel K.....34
Wewoka FSC.....37	Wright, Russell A.....16
Wheeler Jr, Harold W.....21	Wright, Teresa D.....25
White, Jean.....15	Wright, Tony L.....10
White, Michael K.....44	Xiong, Merica.....23, 50
Wilburton FSC.....38	York, Anne.....14
Williams, James S.....11	Yule, Reed.....11
Williams, Katie.....21	Zetterberg, Richard D.....1, 4, 49
Williams, Melissa.....16	Zone Administrative Staff.....6