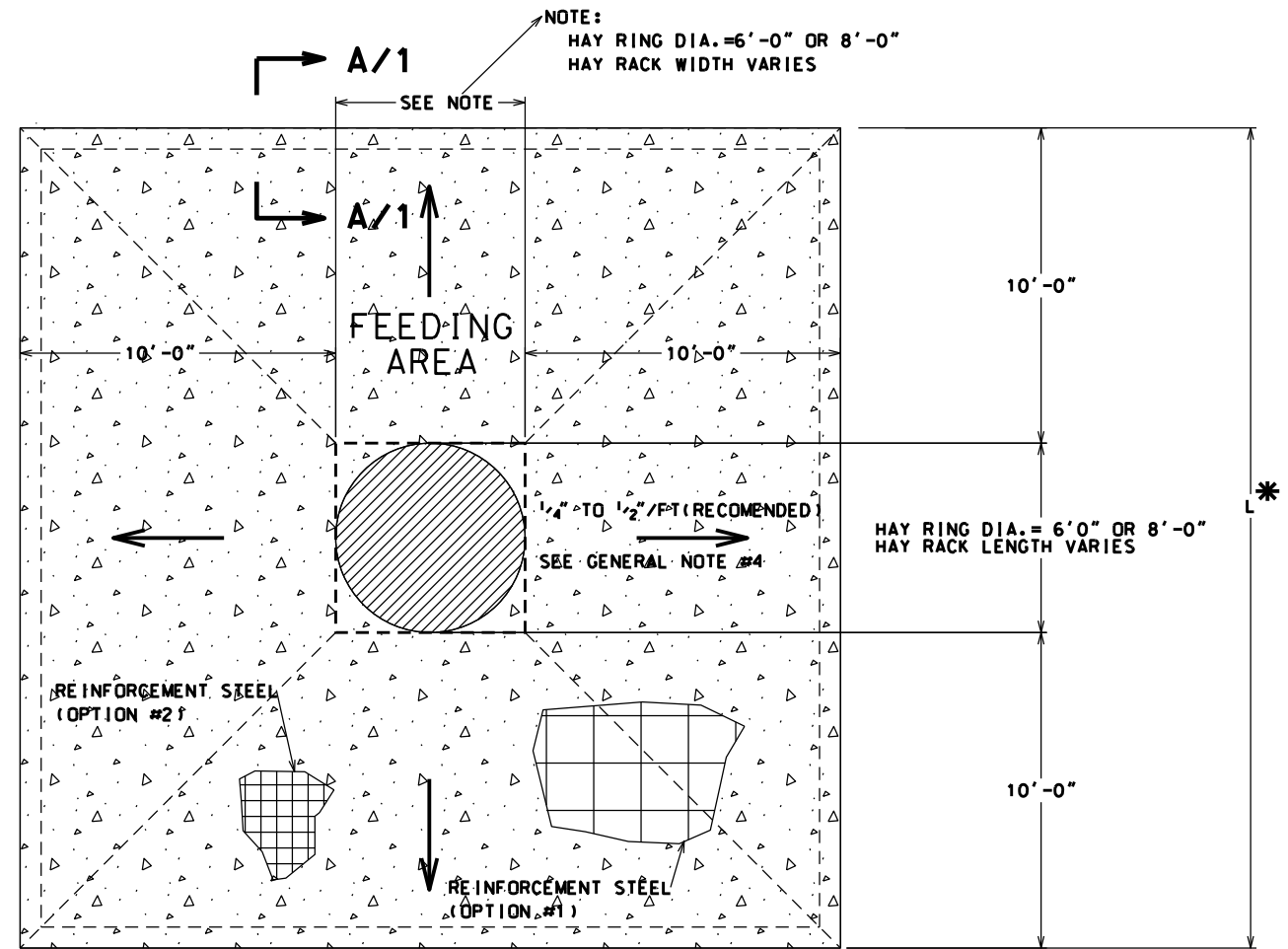


WINTER FEEDING AREA NOTES

- ONE 900-1000 LB ROUND BALE WILL FEED 30 HEAD FOR ONE DAY.
- 1-26'x26' CONCRETE PAD WITH 6' HAY RING WILL FEED 30 HEAD HERD FOR ONE DAY.
- 2-26'x26' CONCRETE PADS WITH 6' HAY RINGS WILL FEED 30 HEAD HERD FOR TWO DAYS.
- FOR LARGER HERDS USE MULTIPLES OF THE 26'x26' PAD.

GENERAL NOTES:

- EARTH SUBGRADE SHALL BE DENSE EXCAVATED SURFACE OR COMPACTED EARTHFILL.
- ALL CONCRETE SHALL HAVE A MINIMUM 28 DAY COMPRESSIVE STRENGTH OF 4000 PSI AND REINFORCING STEEL SHALL BE ASTM A-615.GR-60.
- WHEN CONFIGURATION DIFFERS FROM ABOVE WITH HAY RING AND THE SQUARE FOOTAGE OF FEEDING AREA EXCEEDS 750 SF. CONSTRUCTION JOINTS WILL BE REQUIRED.
- SLOPES AWAY FROM RING OR RACK MAY BE ADJUSTED BY AREA ENGINEER TO FIT TOPOGRAPHY AS NEEDED. AVOID SLOPES THAT CAUSE EROSION VELOCITIES.
- MAXIMUM ALLOWABLE HEAVY USE AREA SURFACE AREA IS BETWEEN 30 - 50 SF/ANIMAL WHEN USING HAY RACK.



**CONCRETE HEAVY USE AREA
PLAN VIEW**

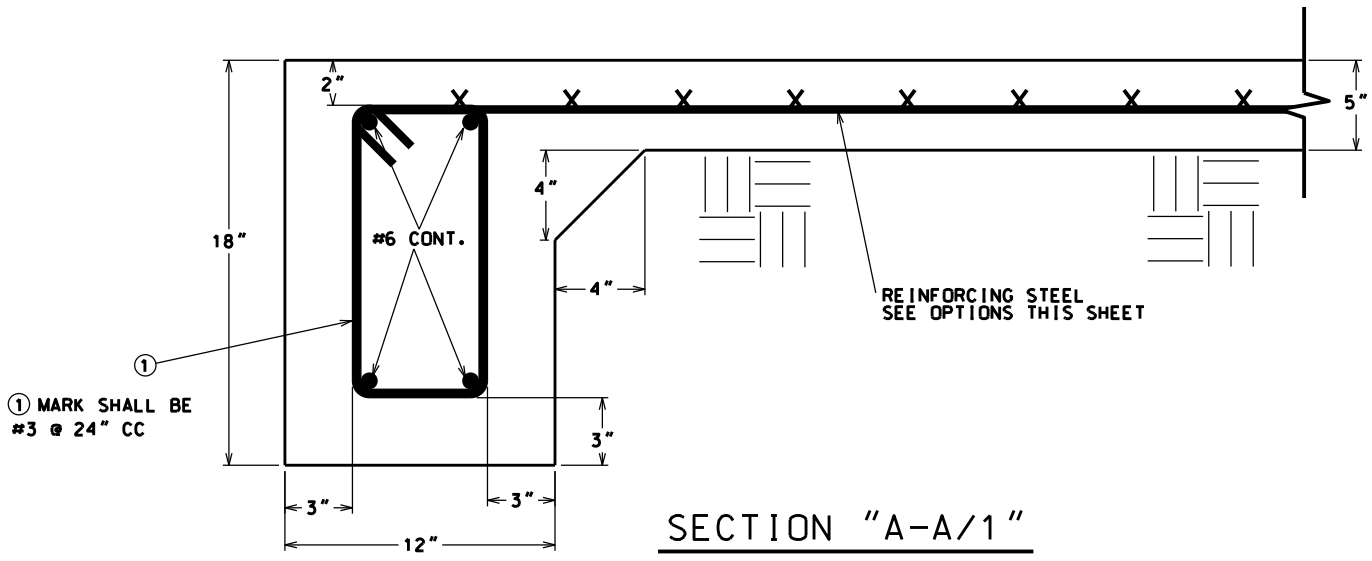
* AREA ENGINEER DETERMINES LENGTH WHEN HAY RACK OR CART IS USED

DIMENSIONS			
PLANNED		INSTALLED	
LENGTH (L)	FEET		FEET
WIDTH (W)	26	FEET	FEET

QUANTITIES			
PLANNED		INSTALLED	
CONCRETE	C. Y.		C. Y.
REINF. STEEL	L. F.		L. F.
ROCK FILL	C. Y.		C. Y.
GEOTEXTILE	S. Y.		S. Y.

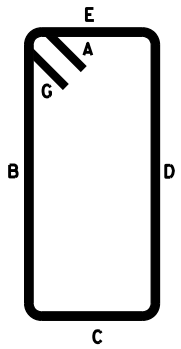
MARK	SIZE	QUANTITY	TYPE	BAR LENGTH	A	B	C	D	E	G
1	#3	24" CC	T2	3'-6 1/2"	2 1/4"	13"	6"	13"	6"	2 1/4"

STEEL SCHEDULE



**SECTION "A-A/1"
NOT TO SCALE**

5-INCH SLAB REINFORCEMENT MAY BE ANY OF THE FOLLOWING:
 1. #3 BARS @ 18" C-C EACH WAY
 2. 1 LAYER OF 6X6 - W2.9 X W2.9 WELDED WIRE FABRIC



MARK ① TYPE T2

CONSTRUCTION CHECK
 DATE: _____ BY: _____
 THIS PRACTICE MEETS SPECIFICATIONS

 SIGNATURE

STANDARD DWG. NO. LA S-6-60
DATE 07/09 SHEET 1 OF 1

REVISIONS			
NO.	DATE	APPROVED	TITLE

DESIGNED	DATE
E. J. GIERING	7/09
DRAWN	DATE
A. GREMILLION	7/09
CHECKED	DATE
M. KENNEDY	7/09
APPROVED	DATE
E. J. GIERING	7/09

CONCRETE HEAVY USE AREA
 FOR WINTER FEEDING
 TYPICAL DRAWING



FILE NAME	LA S-6-60
DRAWING NAME	FIG. S-6-60
DATE	07/09
SHEET	1 OF 1