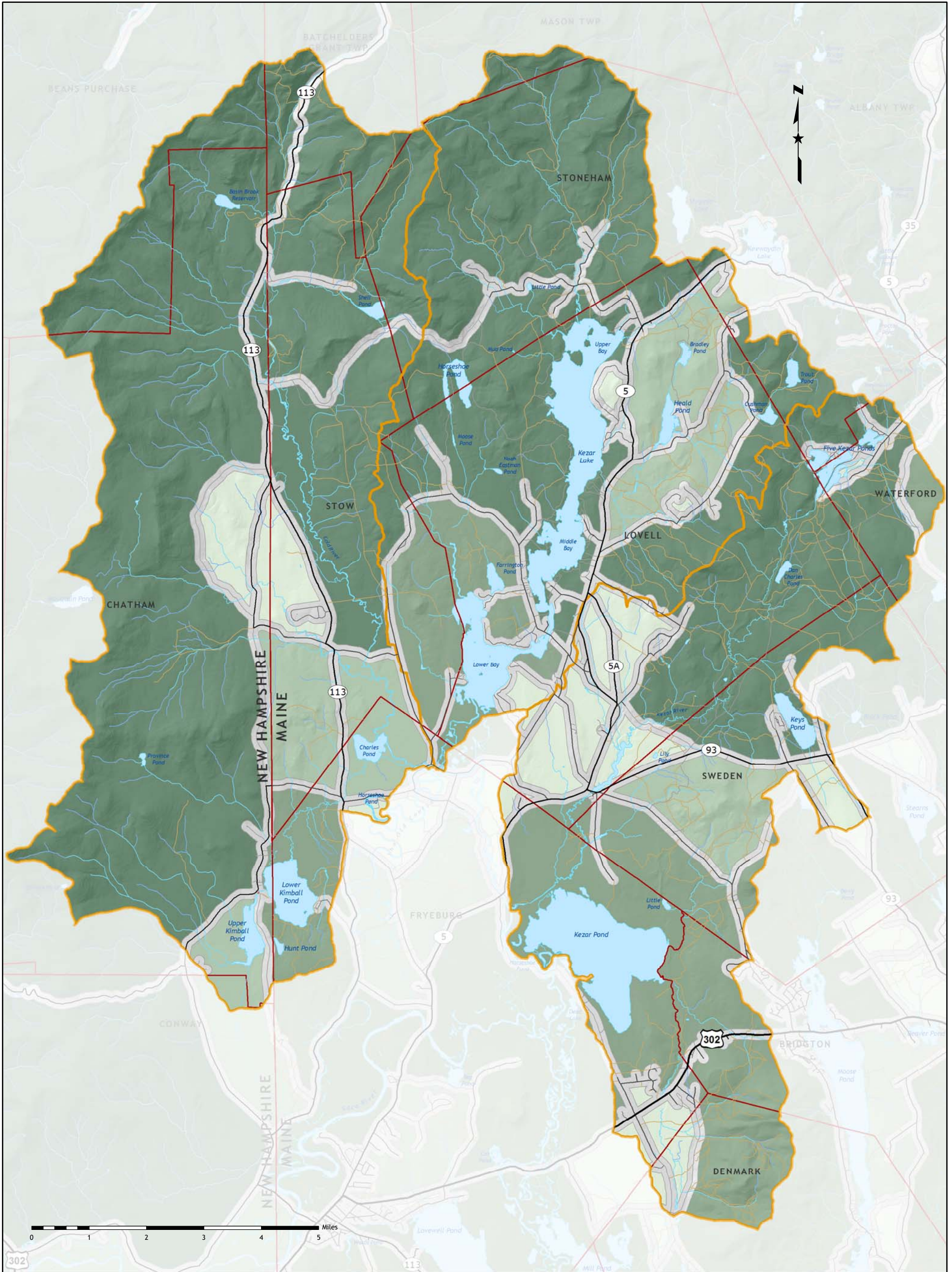


# Map 5



**LEGEND**

- |   |  |
|---|--|
| <b>Unfragmented Blocks</b>  | <b>Roads</b>   |
| <span style="display: inline-block; width: 15px; height: 10px; background-color: #e0f0e0; border: 1px solid black;"></span> < 1000 acres        | <span style="display: inline-block; width: 20px; border-bottom: 2px solid black;"></span> US Routes        |
| <span style="display: inline-block; width: 15px; height: 10px; background-color: #c0e0c0; border: 1px solid black;"></span> 1000 - 2500 acres   | <span style="display: inline-block; width: 20px; border-bottom: 1px solid black;"></span> State Routes     |
| <span style="display: inline-block; width: 15px; height: 10px; background-color: #a0d0a0; border: 1px solid black;"></span> 2500 - 10,000 acres | <span style="display: inline-block; width: 20px; border-bottom: 1px dashed black;"></span> Local Roads     |
| <span style="display: inline-block; width: 15px; height: 10px; background-color: #80b080; border: 1px solid black;"></span> > 10,000 acres      | <span style="display: inline-block; width: 20px; border-bottom: 1px dotted black;"></span> Gravel Roads    |
|   | <span style="display: inline-block; width: 20px; border-bottom: 1px dashed gray;"></span> Unimproved Roads |

**KKC Conservation Plan - Map 5**  
**Unfragmented Forest Blocks**



Bill Duffy  
Dec. 31, 2007