

2015 Endangered Species Planner

Featuring artwork from the 2014 Saving Endangered Species Youth Art Contest





Killer Whale

(Orcinus orca)

Photo credit: Robert Pitman / NOAA
 Artwork by: Ethan Meng, Semifinalist, grades 3-5

The killer whale is the most widely distributed marine mammal, found in all parts of the world. This highly social animal is most abundant in colder ocean waters near Antarctica, Norway, and Alaska, where it eats a variety of animals including fish, squid, seals, and even sharks. Its large size and strength make it one the fastest marine mammals, able to reach speeds in excess of 35 miles per hour. Contaminants, oil spills, depletion of prey, and ship collisions are among the primary threats to the whale. Killer whales off the western U.S. coast were listed as endangered in 2006.



JANUARY 2015

DECEMBER 2014							FEBRUARY 2015						
S	M	T	W	T	F	S	S	M	T	W	T	F	S
1	2	3	4	5	6	7	1	2	3	4	5	6	7
7	8	9	10	11	12	13	8	9	10	11	12	13	14
14	15	16	17	18	19	20	15	16	17	18	19	20	21
21	22	23	24	25	26	27	22	23	24	25	26	27	28
28	29	30	31										

SUNDAY	MONDAY	TUESDAY	WEDNESDAY	THURSDAY	FRIDAY	SATURDAY
				1 New Year's Day	2	3
4	5	6	7	8	9	10
11	12	13	14	15	16	17
18	19 Martin Luther King, Jr. Day	20	21	22	23	24
25	26	27	28	29	30	31

“The edge of the sea is a strange and beautiful place.”

— Rachel Carson, *American conservationist*



Southern Sea otter

(Enhydra lutris nereis)

Photo credit: Michael L. Baird
Artwork by: Amy Feng, Grand Prize Winner, grades 9-12

In shallow coastal waters off California, southern sea otters spend their days hunting sea urchins, crabs, clams, and other invertebrates on the ocean floor. The sea otter is the only marine mammal without a layer of blubber. To keep warm in the cold ocean water, they eat up to 30 percent of their own body weight every day. A thick fur coat – the thickest of any animal on Earth – also helps keep them warm. Demand for this luxurious fur decimated the species by the 19th Century. Oil spills, disease, and entanglement in fishing gear are the biggest threats to the sea otter today. The southern sea otter was listed as threatened in 1977.



FEBRUARY 2015

JANUARY 2015							MARCH 2015						
S	M	T	W	T	F	S	S	M	T	W	T	F	S
4	5	6	7	8	9	10	1	2	3	4	5	6	7
11	12	13	14	15	16	17	8	9	10	11	12	13	14
18	19	20	21	22	23	24	15	16	17	18	19	20	21
25	26	27	28	29	30	31	22	23	24	25	26	27	28
							29	30	31				

SUNDAY	MONDAY	TUESDAY	WEDNESDAY	THURSDAY	FRIDAY	SATURDAY
1	2 Groundhog Day	3	4	5	6	7
8	9	10	11	12	13	14 Valentine's Day
15	16 Presidents' Day	17	18 Ash Wednesday	19	20	21
22	23	24	25	26	27	28

"...the natural world is the greatest source of excitement; the greatest source of visual beauty; the greatest source of intellectual interest. It is the greatest source of so much in life that makes life worth living."

—David Attenborough, *British naturalist*



Green sea turtles live in warm ocean waters around the world, among coral reefs and seagrass. The species declined with the demand for their eggs and meat. Other threats include accidental capture of the turtles in fishing nets, the loss of nesting areas to beach development, and ocean pollution. The green sea turtle was listed as threatened in 1978, except for those that nest in Florida and along the Pacific coast of Mexico, which were listed as endangered. Recovery efforts include protecting beach and ocean habitat, and working with fishermen to prevent turtle capture.



Green Sea Turtle

(Chelonia mydas)

Photo credit: Andy Bruckner / NOAA
 Artwork by: Melody Lin, 1st Place, grades 3-5

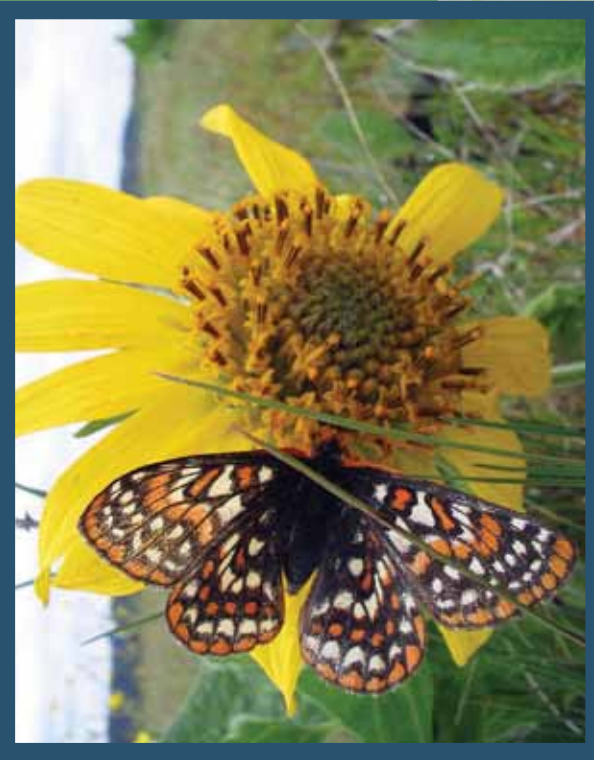
MARCH 2015

FEBRUARY 2015							APRIL 2015						
S	M	T	W	T	F	S	S	M	T	W	T	F	S
1	2	3	4	5	6	7	5	6	7	8	9	10	11
8	9	10	11	12	13	14	12	13	14	15	16	17	18
15	16	17	18	19	20	21	19	20	21	22	23	24	25
22	23	24	25	26	27	28	26	27	28	29	30		

SUNDAY	MONDAY	TUESDAY	WEDNESDAY	THURSDAY	FRIDAY	SATURDAY
1	2	3	4	5	6	7
8 Daylight Saving Time begins	9	10	11	12	13	14 National Wildlife Refuge System anniversary
15 Saving Endangered Species Youth Art Contest submission deadline	16 National Wildlife Week begins	17 St. Patrick's Day	18	19	20 First Day of Spring	21
22	23	24	25	26	27	28
29 Palm Sunday	30	31				

“All of nature is in me, and a bit of myself is in all of nature.”

— Lane Deer, Miniconjou Lakota chief



Bay Checkerspot Butterfly

(Euphydryas editha bayensis)

Photo credit: Aaron Bama / USFWS
 Artwork by: Katrina Chen, Semifinalist, grades 9-12



The bay checkerspot butterfly once thrived throughout thousands of acres in the San Francisco Bay area in California. Adult bay checkerspot butterflies, which live only for 10 days, can be seen flying around prairie-like serpentine grasslands from late February to early May. The loss of this habitat to development is the primary cause for the decline of this species. Air pollution and the spread of non-native plants, which overcrowd the native vegetation these butterflies and their larvae depend on for food, are additional threats to survival. The species was listed as threatened in 1987.

MAY 2015

APRIL 2015

S	M	T	W	T	F	S
	1	2	3	4		
5	6	7	8	9	10	11
12	13	14	15	16	17	18
19	20	21	22	23	24	25
26	27	28	29	30		

JUNE 2015

S	M	T	W	T	F	S
1	2	3	4	5	6	
7	8	9	10	11	12	13
14	15	16	17	18	19	20
21	22	23	24	25	26	27
28	29	30				

SUNDAY	MONDAY	TUESDAY	WEDNESDAY	THURSDAY	FRIDAY	SATURDAY
3	4	5	6	7	8	9
10 Mother's Day	11	12	13	14	15 Endangered Species Day	16 International Migratory Bird Day
17	18	19	20	21	22	23
24	25 Memorial Day	26	27	28	29	30
31						

"The richness I achieve comes from Nature, the source of my inspiration."

— Claude Monet, French artist



The green sea turtle is the only sea turtle that eats only plants. Their vegetarian diet gives them the greenish skin color for which they are named. Every two to four years, adult females migrate from their ocean feeding sites to beach nesting grounds. Usually, green sea turtles choose the same beach their mothers used to lay as many as 200 eggs. The most dangerous time of a green sea turtle's life is when it makes the journey from nest to sea after hatching, facing predation by crabs and sea gulls. Green sea turtles that survive this journey out to sea may live for as long as 100 years.



Green Sea Turtle

(Chelonia mydas)

Photo credit: Mark Sullivan / NOAA
 Artwork by: Sarah Cao, 1st Place, grades K-2

JUNE 2015

MAY 2015

S	M	T	W	T	F	S
		3	4	5	6	7
8	9	10	11	12	13	14
15	16	17	18	19	20	21
22	23	24	25	26	27	28
29	30	31				

JULY 2015

S	M	T	W	T	F	S
			1	2	3	4
5	6	7	8	9	10	11
12	13	14	15	16	17	18
19	20	21	22	23	24	25
26	27	28	29	30	31	

SUNDAY	MONDAY	TUESDAY	WEDNESDAY	THURSDAY	FRIDAY	SATURDAY
	1 Great Outdoors Month begins	2	3	4	5	6 National Fishing and Boating Week begins
7	8	9	10	11	12	13 National Trails Day
14 Flag Day	15 National Pollinator Week begins	16	17	18 Ramadan begins	19	20
21 Father's Day	22	23	24	25	26	27
28 First Day of Summer	29	30				

“Study nature, love nature, stay close to nature. It will never fail you.”

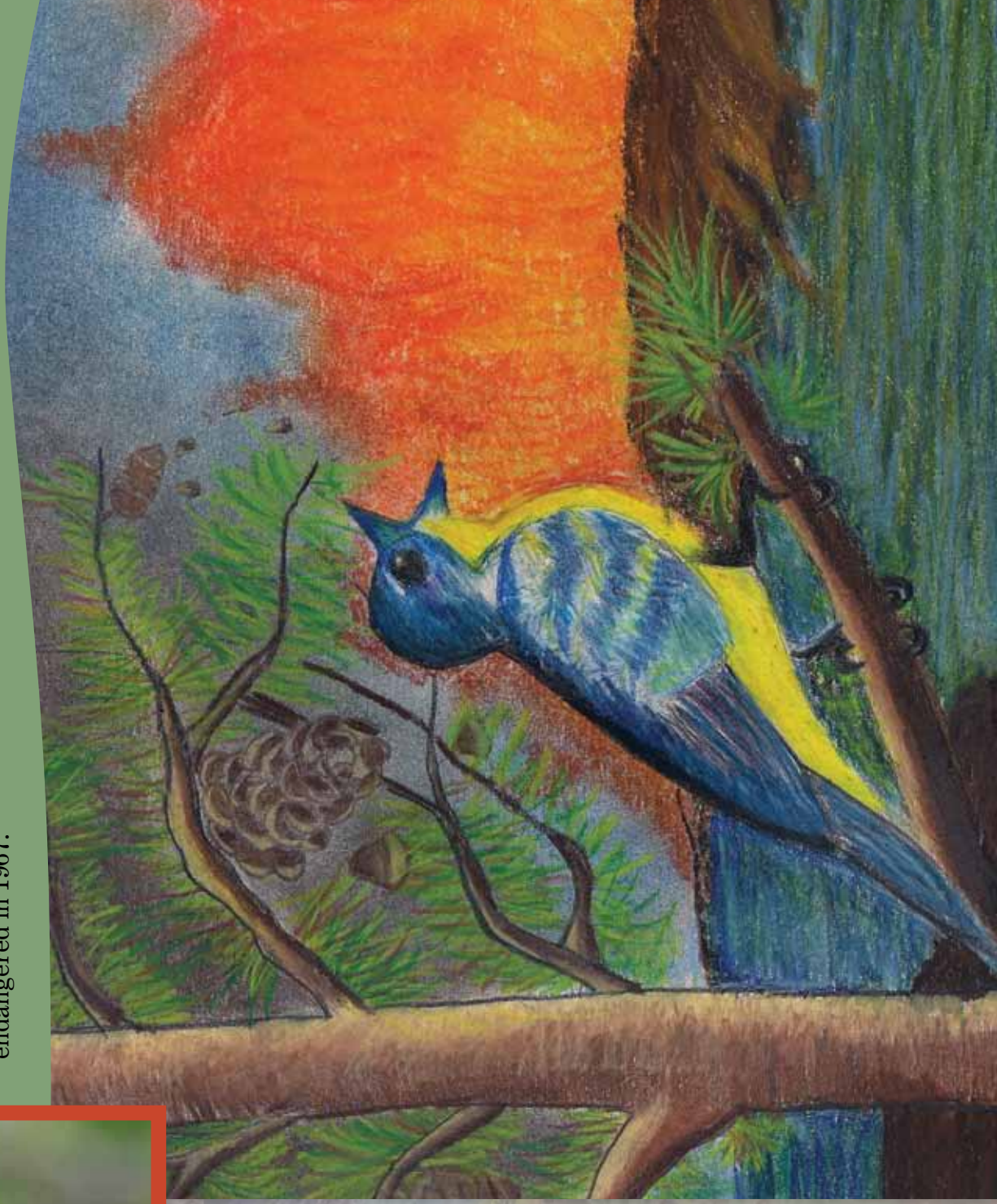
— Frank Lloyd Wright, American architect



Kirtland's Warbler

(*Setophaga kirtlandii*)

Photo credit: Joel Trick / USFWS
 Artwork by: Aidan Peter, 1st Place, grades K-2



The Kirtland's warbler depends on young jack pine forests. This songbird declined with the loss of this unique forest habitat due to fire suppression. Forest fires, once thought to harm the environment, keep forests from becoming overgrown and allow jack pine cones to release seeds to establish new jack pine stands that the warbler prefers for nesting. Brown headed cowbird parasitism is another threat to the Kirtland's warbler. Cowbirds lay their eggs in Kirtland's warbler nests, leaving the unsuspecting warblers to incubate and care for the young cowbirds. The species was among the first animals to be listed as endangered in 1967.

JULY 2015

SUNDAY	MONDAY	TUESDAY	WEDNESDAY	THURSDAY	FRIDAY	SATURDAY
5	6	7	8	9	10	11
12	13	14	15	16	17	18
19	20	21	22	23	24	25
26	27	28	29	30	31	
			1	2	3	4
						Independence Day
					Ramadan ends	

"We could never design a building as beautiful as the trees."

—Pietro Belluschi, Italian-born American architect

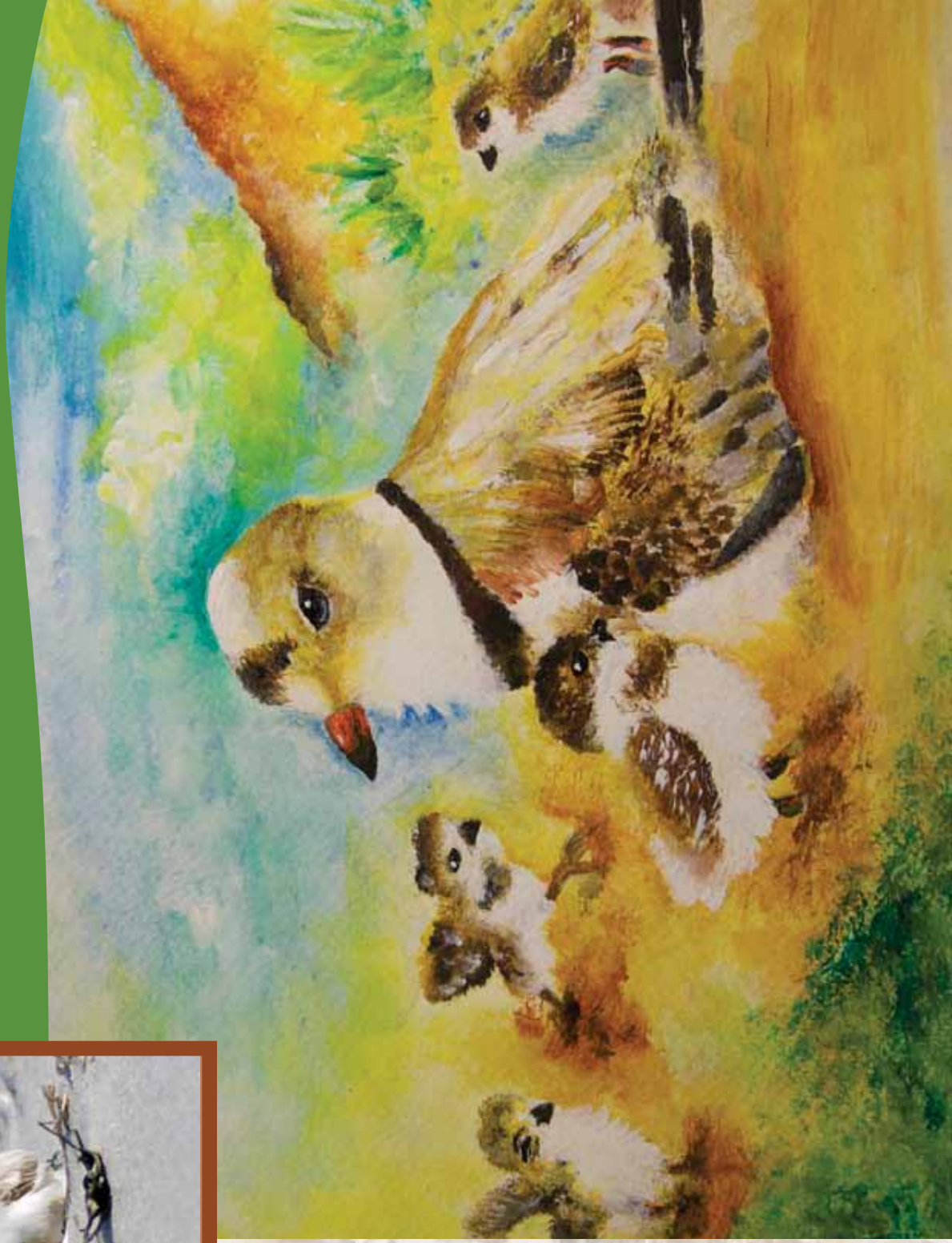


Piping Plover

(Charadrius melodus)

Photo credit: Dave Frederick / Creative Commons
 Artwork by: Lyra D'Souza, Semifinalist, grades 6-8

Every year, piping plovers fly thousands of miles from their nesting habitat in northeastern and midwestern states to their wintering habitat along the southern Atlantic coast and the Caribbean, and back again. This small shorebird prefers the same beautiful beaches that attract people. The development of the shoreline has limited the number of available nesting sites, and is the primary reason for the species' decline. Piping plover eggs are small and blend in with the sand, leaving them vulnerable to trampling. The piping plover was listed as threatened in 1985, except for those that nest in the Great Lakes and Great Plains, which were listed as endangered.



AUGUST 2015

JULY 2015							SEPTEMBER 2015						
S	M	T	W	T	F	S	S	M	T	W	T	F	S
5	6	7	8	9	10	11	6	7	8	9	10	11	12
12	13	14	15	16	17	18	13	14	15	16	17	18	19
19	20	21	22	23	24	25	20	21	22	23	24	25	26
26	27	28	29	30	31		27	28	29	30			

SUNDAY **MONDAY** **TUESDAY** **WEDNESDAY** **THURSDAY** **FRIDAY** **SATURDAY**

“There is nothing in which the birds differ more from man than the way in which they can build and yet leave a landscape as it was before.”

— Robert Wilson Lynd, Irish writer

2	3	4	5	6	7	8
9	10	11	12	13	14	15
16	17	18	19	20	21	22
23	24	25	26	27	28	29
30	31					



Blue Shiner

(Cyprinella caerulea)

Photo credit: Dick Biggins / USFWS
 Artwork by: Connie Zhang, Semifinalist, grades K-2

Much remains unknown about the blue shiner, a four-inch-long fish that lives in small rivers, creeks, and pools in the southeastern U.S. The species needs clean and clear water to see and hunt its small insect prey. Fewer than 2,500 individuals are believed to remain in the wild today. A decrease in water quality is likely the most significant threat to the shiner's survival. The species was listed as threatened in 1992. The future of the blue shiner depends on efforts to protect its freshwater habitat, especially in the Conasauga River in Tennessee and Georgia, where the species is currently most abundant.



OCTOBER 2015

SEPTEMBER 2015							NOVEMBER 2015						
S	M	T	W	T	F	S	S	M	T	W	T	F	S
		1	2	3	4	5	1	2	3	4	5	6	7
6	7	8	9	10	11	12	8	9	10	11	12	13	14
13	14	15	16	17	18	19	15	16	17	18	19	20	21
20	21	22	23	24	25	26	22	23	24	25	26	27	28
27	28	29	30				29	30					

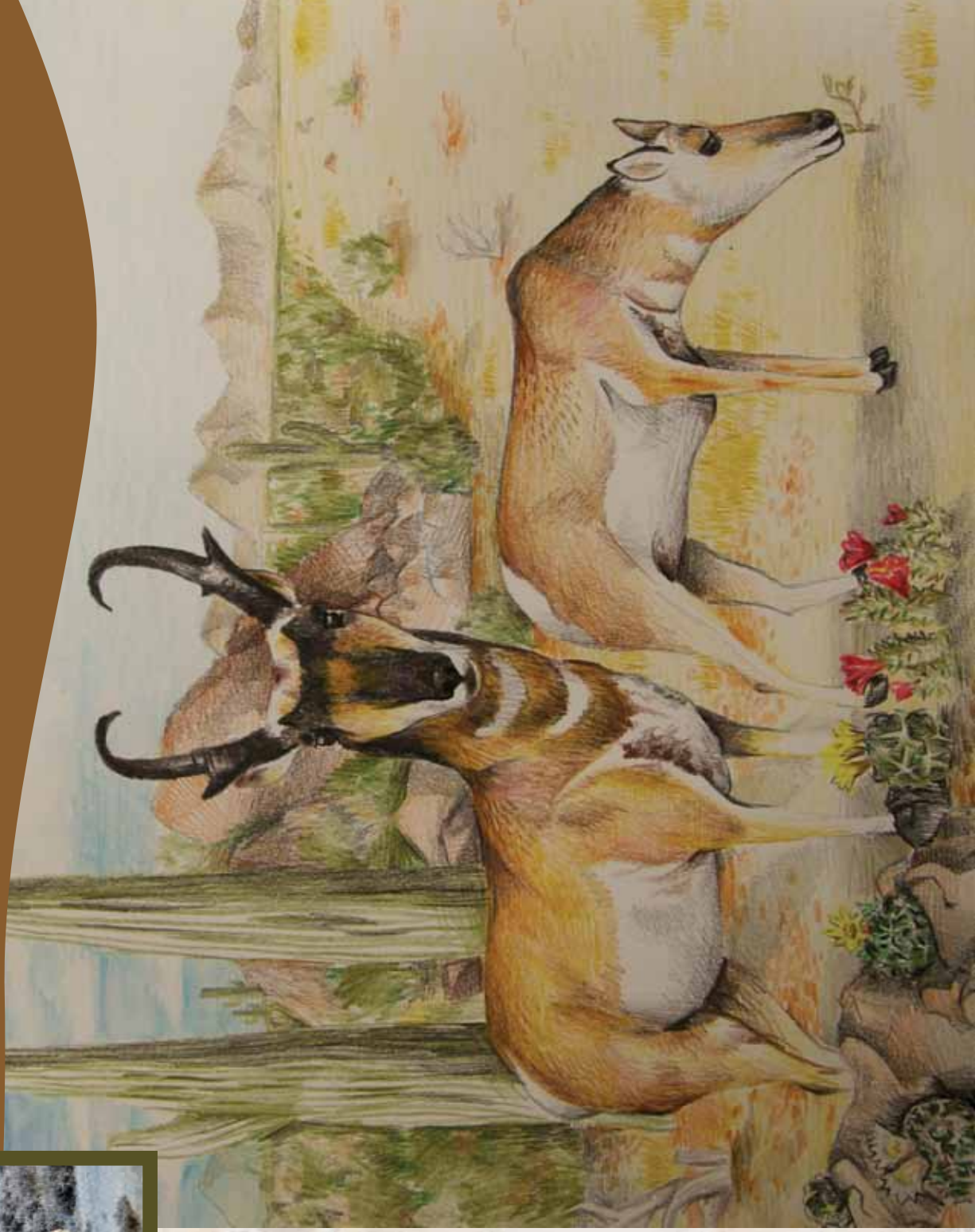
	SUNDAY	MONDAY	TUESDAY	WEDNESDAY	THURSDAY	FRIDAY	SATURDAY
4		5	6	7	8	9	10
11	National Wildlife Refuge Week begins	12 Columbus Day	13	14	15	16	17
18		19	20	21	22	23	24
25		26	27	28	29	30	31 Halloween

"Many men go fishing all of their lives without knowing that it is not fish they are after."

— Henry David Thoreau, *American author and poet*



The Sonoran pronghorn is a rare subspecies of pronghorn that lives in southwestern Arizona and northwestern Mexico. Because they live in one of the driest regions in North America, Sonoran pronghorn have adapted to going long periods without water. Pronghorn survive by eating the most succulent parts of desert shrubs, trees, and cacti. A four-part stomach helps them digest these hardy plants, while their sharp eyesight and strong legs help them escape mountain lions and other predators. The species was among the first animals to be listed as endangered in 1967.



Sonoran Pronghorn

(Antilocapra americana sonoriensis)

Photo credit: Jeannie Stafford / USFWS
 Artwork by: Brandon Li, 1st Place, grades 6-8

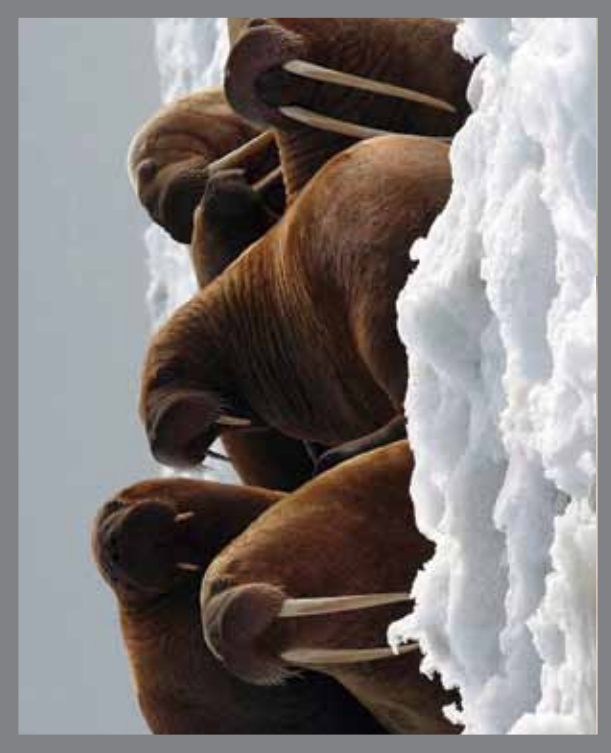
NOVEMBER 2015

OCTOBER 2015							DECEMBER 2015						
S	M	T	W	T	F	S	S	M	T	W	T	F	S
4	5	6	7	8	9	10	6	7	8	9	10	11	12
11	12	13	14	15	16	17	13	14	15	16	17	18	19
18	19	20	21	22	23	24	20	21	22	23	24	25	26
25	26	27	28	29	30	31	27	28	29	30	31		

SUNDAY	MONDAY	TUESDAY	WEDNESDAY	THURSDAY	FRIDAY	SATURDAY
1 Daylight Saving Time ends	2	3	4	5	6	7
8	9	10	11 Veterans Day	12	13	14
15	16	17	18	19	20	21
22	23	24	25	26 Thanksgiving Day	27	28
29	30					

“Society is defined not only by what it creates, but by what it refuses to destroy.”

— John Sawhill, American conservationist



Pacific Walrus

(Odobenus rosmarus ssp. divergens)

Photo credit: Joel Garrlich-Miller / USFWS
 Artwork by: Elizabeth Lee, Semifinalist, grades 3-5

The Pacific walrus – whose Latin name means “tooth-walking sea horse” – is at home in the Northern Hemisphere, along the Arctic Ocean and sub-arctic seas. These large and powerful animals are great swimmers and divers, diving to the ocean floor in search of clams—its primary food source. The loss of sea ice habitat is a threat to the survival of this long-lived animal, which depends on floating sea ice for birthing and nursing calves, resting, isolation from predators, and for passive transport to new feeding areas. The species is currently a candidate for federal protection under the Endangered Species Act.



DECEMBER 2015

NOVEMBER 2015							JANUARY 2016						
S	M	T	W	T	F	S	S	M	T	W	T	F	S
1	2	3	4	5	6	7	3	4	5	6	7	1	2
8	9	10	11	12	13	14	10	11	12	13	14	8	9
15	16	17	18	19	20	21	17	18	19	20	21	22	23
22	23	24	25	26	27	28	24	25	26	27	28	29	30
29	30						31						

	SUNDAY	MONDAY	TUESDAY	WEDNESDAY	THURSDAY	FRIDAY	SATURDAY
			1	2	3	4	5
6	7	8	9	10	11	12	
13	14 Hanukkah ends	15	16	17	18	19	
20	21	22 First Day of Winter	23	24	25 Christmas Day	26 Kwanzaa begins	
27	28 41st anniversary of the Endangered Species Act	29	30	31			

“Man shapes himself through decisions that shape his environment.”

— Rene Dubos, *American microbiologist*



ASSOCIATION
OF ZOOS &
AQUARIUMS



ENDANGERED
SPECIES COALITION
INTERNATIONAL
CHILD ART
FOUNDATION

Do you know a budding Picasso?

Encourage your student to participate in the 2015 Saving Endangered Species Youth Art Contest. The contest is a great way for students grades K-12 to learn about endangered species and express their knowledge and support through art.

The submission deadline is March 15, 2015. Visit www.endangeredspeciesday.org for contest guidelines.

The artwork featured in this planner is from the 2014 Saving Endangered Species Youth Art Contest, sponsored by the U.S. Fish and Wildlife Service, the Endangered Species Coalition, the Association of Zoos and Aquariums, and the International Child Art Foundation.

JANUARY 2016

SUNDAY	MONDAY	TUESDAY	WEDNESDAY	THURSDAY	FRIDAY	SATURDAY
					1 New Year's Day	2
3	4	5	6	7	8	9
10	11	12	13	14	15	16
17	18 Martin Luther King, Jr. Day	19	20	21	22	23
24	25	26	27	28	29	30
31						

FEBRUARY 2016

SUNDAY	MONDAY	TUESDAY	WEDNESDAY	THURSDAY	FRIDAY	SATURDAY
	1	2	3	4	5	6
7	8	9	10	11	12	13
14	15 Presidents' Day	16	17	18	19	20
21	22	23	24	25	26	27
28	29					

MARCH 2016

SUNDAY	MONDAY	TUESDAY	WEDNESDAY	THURSDAY	FRIDAY	SATURDAY
		1	2	3	4	5
6	7	8	9	10	11	12
13 Daylight Saving Time begins	14	15	16	17	18	19
20 First Day of Spring	21	22	23	24	25	26
27	28	29	30	31		

APRIL 2016

SUNDAY	MONDAY	TUESDAY	WEDNESDAY	THURSDAY	FRIDAY	SATURDAY
					1	2
3	4	5	6	7	8	9
10	11	12	13	14	15	16
17	18	19	20	21	22 Earth Day	23
24	25	26	27	28	29 Arbor Day	30

2014 Saving Endangered Species Youth Art Contest Semifinalists

Grades 9-12



Abbey Edmonds
Hine's Emerald Dragonfly
and Bladderpod



Amy Feng
Southern Sea Otter



Franny Lin
Loggerhead Sea Turtle



Jared Meister
Whooping Crane



Jessica Sun
San Francisco Garter Snake



Lavinia Liang
Polar Bear

Grades 6-8



Austin Zhang
Florida Panther



Brenna Litynski
Ocelot



Ian Chiu
Humpback Whale



Nadia Estudillo
Ocelot



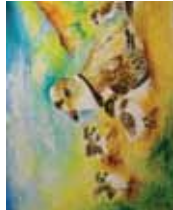
Nicole Hu
Florida Panther



Brandon Li
Sonoran Pronghorn



Henna Soomro
Polar Bear



Lyra D'Souza
Piping Plover



Nicholas Martinez
Grizzly Bear



Teagan Wells
Black-footed Ferret

Grades 3-5



Ameerah Grover
Desert Tortoise



Ethan Meng
Orca



Gretchen Wu
Beluga Whale



Isabella Urtando
Beluga Whale



Nate Johnson
Jaguar



Elizabeth Lee
Pacific Walrus



George Aaron Koonce
Gray Wolf



Hailey Boiarsky
Kemp's Ridley Sea Turtle



Melody Lin
Green Sea Turtle



Nathan Limtu
Green Sea Turtle

Grades K-2



Abigail Binesh
Lange's metalmark butterfly



Brandon Derkertegand
Piping Plover



Evan Munn
Gray Wolf



Maisie Jane Jaworsky
Beluga Whale



Sarah Cao
Green Sea Turtle



Aidan Peter
Kirtland's Warbler



Connie Zhang
Blue Shiner



Isabella Zhang
Whooping Crane



Mason Liu
Ocelot



Simran Bathla
'Akkiki

U.S. Fish and Wildlife Service
Ecological Services Program
5275 Leesburg Pike
Falls Church, VA 22041
703-358-2171
www.fws.gov/endangered



Endangered Species Coalition
www.stopextinction.org