



United States Department of Agriculture  
**Natural Resources Conservation Service**

344 Merrow Road, Suite A, Tolland, CT 06084-3917  
(860) 871-4011 (phone) \* (860) 871-4054 (fax)  
[www.ct.nrcs.usda.gov](http://www.ct.nrcs.usda.gov)

**CONNECTICUT**

# Soil Based Recommendations for Storm Water Management Practices



*Photo Credit: Tom Ladny, NRCS*

CT-TP-2005-3  
August 2005  
*(revised November 2007)*

## **Soil Based Recommendations for Storm Water Management Practices**

*Prepared by:*

- Lisa Krall, Soil Scientist
- Shawn McVey, Assistant State Soil Scientist
- Kipen Kolesinskas, State Soil Scientist
- Phillip Renn, Water Resources Coordinator  
USDA, Natural Resources Conservation Service  
344 Merrow Road, Suite A  
Tolland, CT 06084-3917

*This report may be cited as follows:*

Krall, Lisa, et al. 2005. Soil Based Recommendations for Storm Water Management Practices. CT-TP-2005-3 USDA Natural Resources Conservation Service, Tolland, CT

CT-TP-2005-3  
August 2005  
(revised November 2007)

The Natural resources Conservation Service provides leadership in a partnership effort to help people conserve, maintain, and improve our natural resources and environment.

An Equal Opportunity Provider and Employer

# Soil Based Recommendations for Storm Water Management Practices

## Table of Contents

<b>Introduction</b> .....	1
<b>Methodology</b> .....	1
<b>Applications</b> .....	1
<b>Selected Storm Water Runoff Management Systems</b>	
Infiltration Systems .....	4
Perennial Wetland/Pond Systems .....	5
Intermittent Wetland Systems .....	6
Retention/Detention Basins .....	7
Stormwater Runoff Management Practice Ratings for Planning or Preliminary Site Review .....	8
Planning Scenario Using Soil Based Ratings for Storm Water Runoff Management Practice Recommendations .....	8
<b>Appendix</b>	
A. Specific Soil Criteria Use to Develop Each Interpretation .....	9
B. Definitions of Hydrologic Soil Groups and Flooding Classes .....	11
C. Connecticut Soil Series with “High” or “Very High” Permeability (over 6”/hr) in the Substratum .....	12
D. Soil Suitability Ratings and Limitations for Stormwater Runoff Management Practices .....	13
E. Contacts .....	22
<b>Maps</b>	
Soil Ratings for Infiltration Systems .....	4
Soil Ratings for Perennial Wetland Systems .....	5
Soil Ratings for Intermittent Wetland Systems .....	6
Soil Ratings for Detention/Retention Basins .....	7
Preferred Systems, Based on Soil Map Units Rated “Least Limited” .....	8
<b>Figures</b>	
Cover Photo: Multiple Detention/Retention Basins	
Figure #1 Schematic of an Infiltration Trench .....	4
Figure #2 Stormwater Pond .....	5
Figure #3 Extended Detention Shallow Wetland .....	6
Figure #4 Dry Detention Basin .....	7

# **Soil Based Recommendations for Storm Water Management Practices**

## **Introduction**

This report includes four soil survey interpretations that evaluate the suitability of Connecticut soils for four widely used post construction storm water runoff management systems. They are infiltration systems, stormwater basins, perennial wetland systems, and intermittent wetland systems.

A soil interpretation refers to the behavior of soils in response to human activities. Interpretations are a guide to use and management of soils in a survey area. Soils with similar responses to a particular use or treatment often are grouped together. These interpretations are designed to be used with the National Cooperative Soil Survey of Connecticut.

According to The U.S. Census Bureau, a full third of Connecticut towns experienced more than 10% population growth in between 1990 and 2000. Growing numbers of homes, garages, driveways, parking lots and other impervious areas have decreased infiltration and ground water recharge and increased discharges of runoff into waterways. ( For small streams, increased runoff volumes result in higher flood flows and decreased low flows. ) Malfunctioning storm water runoff management practices exacerbate these problems and can lead to surface and ground water degradation. The purpose of these interpretations is to help people use soil survey information as a screening tool for successful selection and implementation of best management practices for storm water runoff. For additional information about urban storm water characteristics, refer to the 2004 Connecticut Stormwater Quality Manual, section 2.

## **Methodology**

Soil and landscape criteria used to rate soil suitability were identified using specifications in the CT/RI-NRCS Runoff Management System Standard (570) and interviews with engineering staff. The National Soil Information System (NASIS) was used to write queries that access the state's soil survey data and assign ratings and limitations to each map unit in the soil survey legend.

Rating classes indicate the extent to which the soils are limited by the soil properties that affect the management system. A least limited or good rating indicates that the soil has features that are very favorable for the specified system. Good performance and relatively low installation and maintenance costs can be expected. A soil rated somewhat limited or fair has features that are moderately favorable for the system. The limitations can be overcome or minimized by special planning, design, installation, and maintenance. Increased installation costs and maintenance will be required to sustain performance. Most limited or poor indicates that one or more soil feature is unfavorable for the specified system. The limitation generally cannot be overcome. Sometimes expensive design, installation, and maintenance may be employed, but performance may still be poor.

## **Applications**

The interpretation can be displayed by map unit in a number of tabular formats; from a very simple one showing rating class to one giving all the limitations and the degree of severity of each. It can be imported to GIS and displayed on a map that shows the most appropriate storm water system for

an area or that illustrates the soil suitability for one selected system. These can be produced using town lines, watershed boundaries, or some other delineation.

These ratings apply to storm water runoff from residential and commercial areas including driveways, roads, roofs, parking areas, and lawns. They are not intended for the placement of treatment systems for animal waste, domestic or industrial wastewater, or other highly concentrated waste material.

The interpretation is designed to be used by town planning, regulatory, and engineering staff; state and local agencies, consultants, realtors, and individual land owners. It can be used to help guide the selection of storm water practices that best fit the soil conditions in comprehensive planning on a town or watershed basis, site plan review, or for preliminary site selection and design.

Survey based soil interpretations are meant to be used for planning or review and do not replace an on-site soil evaluation for site development. The ratings generated are interpretations of the dominant soil condition. Inclusions of different soils within map units and ranges in characteristics within soil series may influence practice selection and design.

# **Selected Storm Water Runoff Management Systems**

## Infiltration Systems

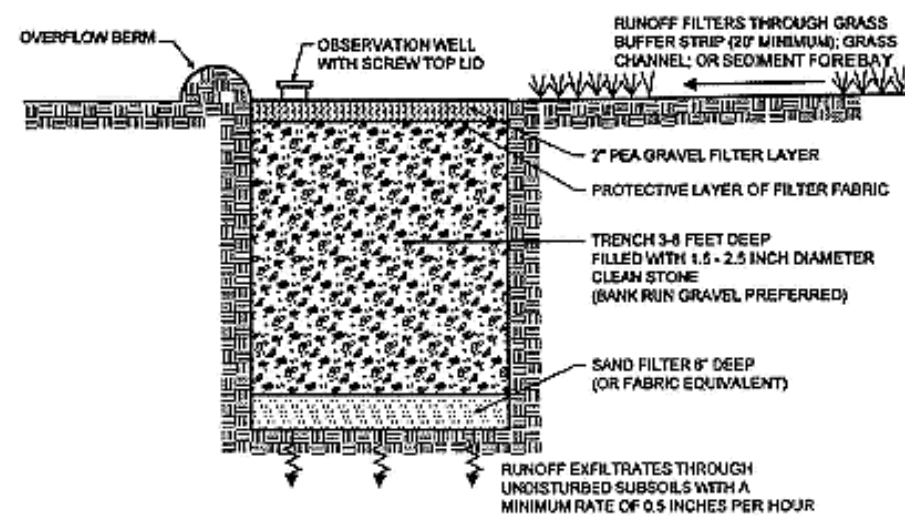
- Infiltration systems receive runoff and allow it to seep into the soil below. Runoff is ponded or stored in the void space between the stones and infiltrates through the bottom and into the soil matrix.
- Infiltration systems capture runoff and provide ground water recharge.
- Soils suitable for infiltration have high permeability rates and are not suitable for runoff that contains contaminants unless it is pretreated.<sup>1</sup>
- Infiltration systems require deep, permeable soils, a deep water table, and a level area.

The following data elements were used to evaluate soil suitability for infiltration systems:<sup>2</sup>

Depth to restrictive layer (bedrock, dense till)  
 Depth to seasonal high water table  
 Permeability  
 Bulk density  
 Flooding  
 Slope.

### Practices included:

Infiltration systems include infiltration trenches, underground galleries, and engineered, large scale raingardens such as bio-retention systems in parking lots.



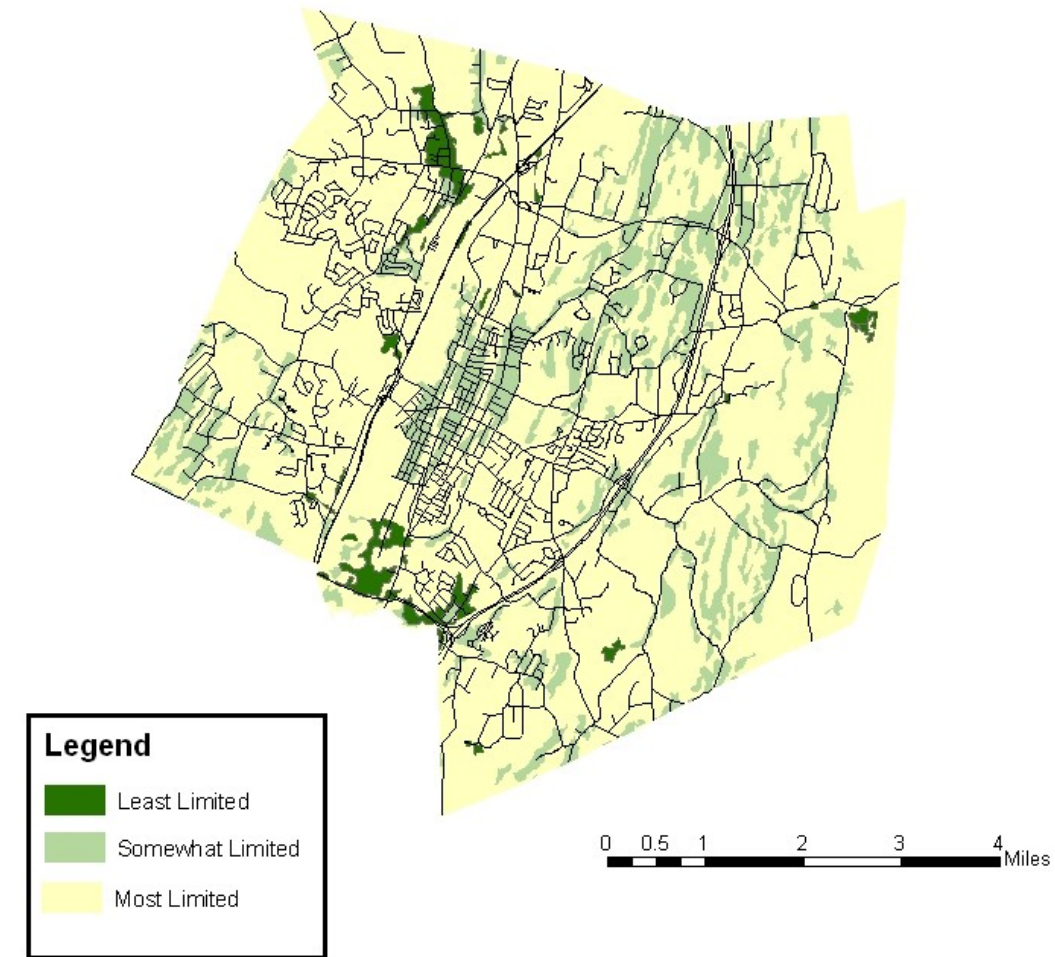
A schematic of an infiltration trench (Source: MDE, 2000)

Fig. #1

<sup>1</sup> The Connecticut DEP requires that field-measured soil infiltration rates be less than 3.0 inches per hour for primary treatment systems. See appendix C: Connecticut Soil Series with high or very high saturated hydraulic conductivity ( $K_{sat}$ ) in the substratum.

<sup>2</sup> See Appendix A for additional information about individual practices and soils information.

## Soil Ratings for Infiltration Systems



### Advantages of Infiltration Systems:

- Increases groundwater recharge and stream baseflows
- Reduces runoff volumes and peak flows
- Requires a relatively small area

### Limitations:

- Require frequent inspection and maintenance
- Use restricted to small drainage areas
- Reduced performance during winter months
- Not suitable for runoff containing high sediment loads
- Requires careful construction to prevent clogging or compaction



## Perennial Wetland/Pond Systems

- Stormwater runoff flows into the system and is held there for long periods.
- Pollutant removal is achieved through settling, biological uptake, decomposition, and volatilization.
- Perennial wetland/pond systems require deep soils with slow permeability, permanent water tables and a level site.

The following data elements were used to evaluate soil suitability for perennial wetland systems:<sup>3</sup>

Seasonal high water table  
Permeability  
Hydrologic soil group  
Slope.

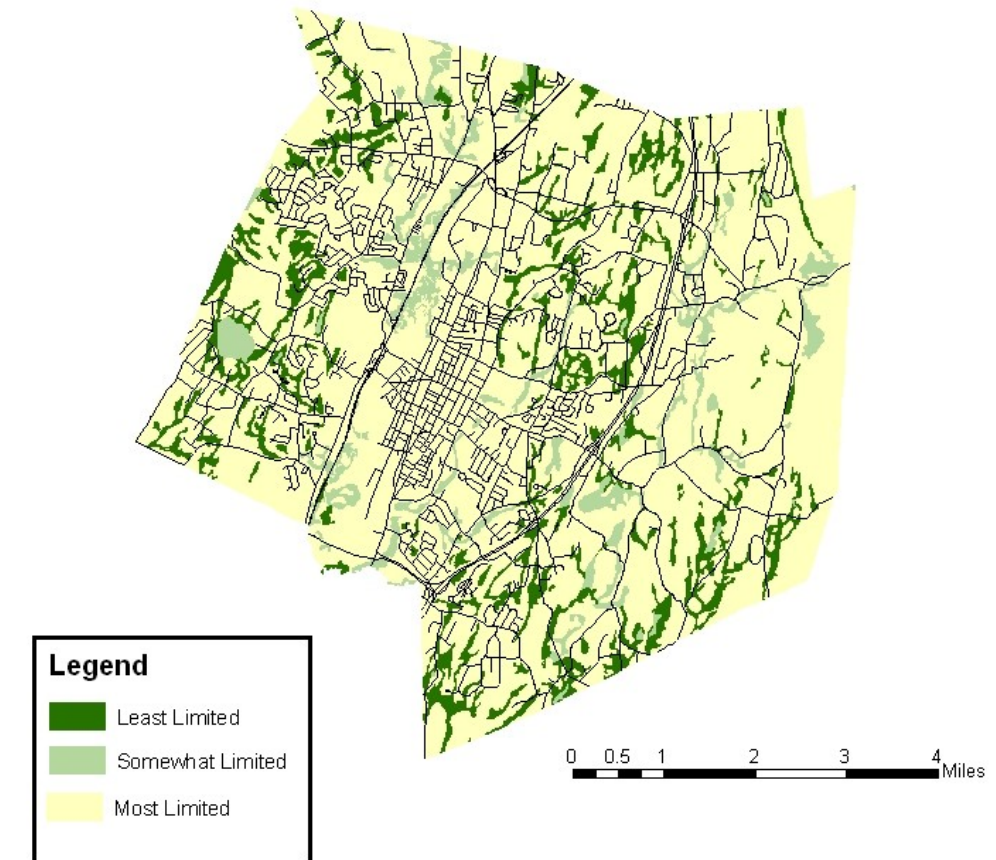
### Practices included:

Practices included in this interpretation are ponds, shallow marsh systems, and constructed wetlands.



Fig. #2 Storm water pond  
Photo Credit: Tom Ladny, NRCS

## Soil Ratings for Perennial Wetland Systems



### Advantages of Perennial Wetland Systems:

One of the most effective practices for treating soluble pollutants  
Open water provides aesthetic benefit and wildlife habitat.  
Reduces peak flows

### Disadvantages:

Relatively large land area required for drainage area.  
May cause thermal impacts to receiving water  
Efficiency can be affected by cold weather  
Potential mosquito breeding habitat  
Deep ponds may present safety concerns

Note: Criteria for selecting these soils were based on their ability to support hydrophytic vegetation. Most soils are poorly and very poorly drained and are Connecticut wetlands. These areas are regulated and permits may be required before any activity in or around them can begin. Care should be taken that no activities degrade these areas. On sites where degradation has already taken place, good opportunities for wetland restoration exist.

<sup>3</sup> See Appendix A for additional information about individual practices and soils information.



### Intermittent Wetland Systems

- Intermittent wetland systems are similar to perennial systems except that they may dry out for some periods(s) during the year.
- Soils may have slightly more rapid permeability or lower water tables than those required for perennial systems.
- Detention/retention basins installed in soils with high permeability rates are not suitable for runoff that contains contaminants unless it is pretreated.<sup>4</sup>

The following data elements were used to evaluate soil suitability for intermittent wetland systems:<sup>5</sup>

- Seasonal high water table
- Permeability
- Hydrologic soil group
- Slope.

**Practices included:**

These systems include pond/wetland systems, extended detention wetlands, rain gardens, and pocket wetlands.



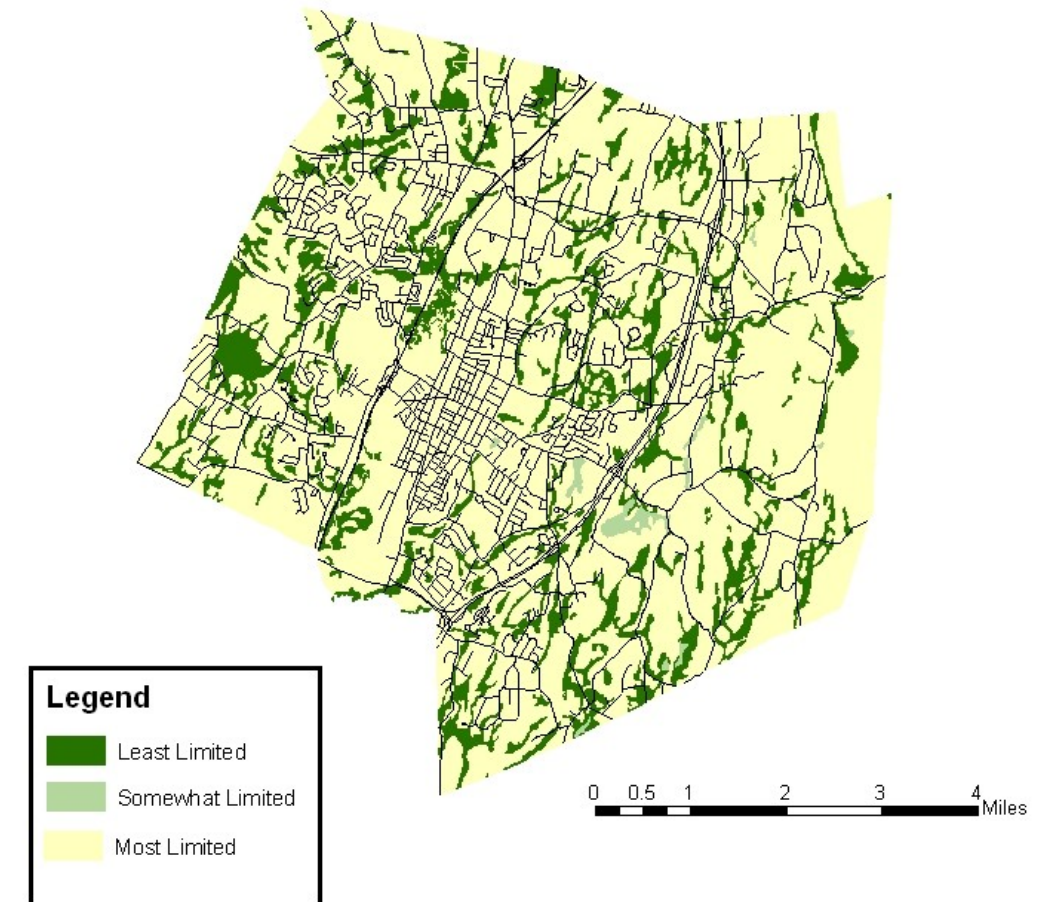
Photo Credit: Tom Ladny, NRCS

Fig. #3 Extended Detention Shallow Wetland

<sup>4</sup> The Connecticut DEP requires that field-measured soil infiltration rates be less than 3.0 inches per hour for primary treatment systems. See appendix C: Connecticut Soil Series with high or very high saturated hydraulic conductivity in the substratum.

<sup>5</sup> See Appendix A for additional information about individual practices and soils information.

### Soil Ratings for Intermittent Wetland Systems



**Advantages of Intermittent Wetland Systems:**

- Efficient at removing particulate matter
- Can provide treatment of soluble pollutants
- May provide aesthetic benefits and wildlife habitat elements
- Reduces peak flows

**Limitations:**

- Relatively large land area required for drainage area
- May not maintain wet conditions during dry weather periods
- May cause thermal impacts to receiving water
- Potential mosquito breeding habitat
- Deep ponds may present safety concerns

Note: Criteria for selecting these soils were based on their ability to support hydrophytic vegetation. Most soils are poorly and very poorly drained and are Connecticut wetlands. These areas are regulated and permits may be required before any activity in or around them can begin. Care should be taken that no activities degrade these areas. On sites where degradation has already taken place, good opportunities for wetland restoration exist.



## Stormwater Basins

- These basins detain the storm water runoff to allow particles and associated pollutants to settle. They may reduce peak flows, remove particulate pollutants, and provide flood control.
- Of all the practices evaluated, they are practical on the widest range of soils. Only soils with shallow bedrock, ponding, or very steep slopes cannot be used.
- Detention/retention basins installed in soils with high permeability rates are not suitable for runoff that contains contaminants unless it is pretreated.<sup>6</sup>

The following data elements were used to evaluate soil suitability for stormwaterbasins:<sup>7</sup>

Depth to bedrock  
Hydrologic soil group  
Flooding  
Slope

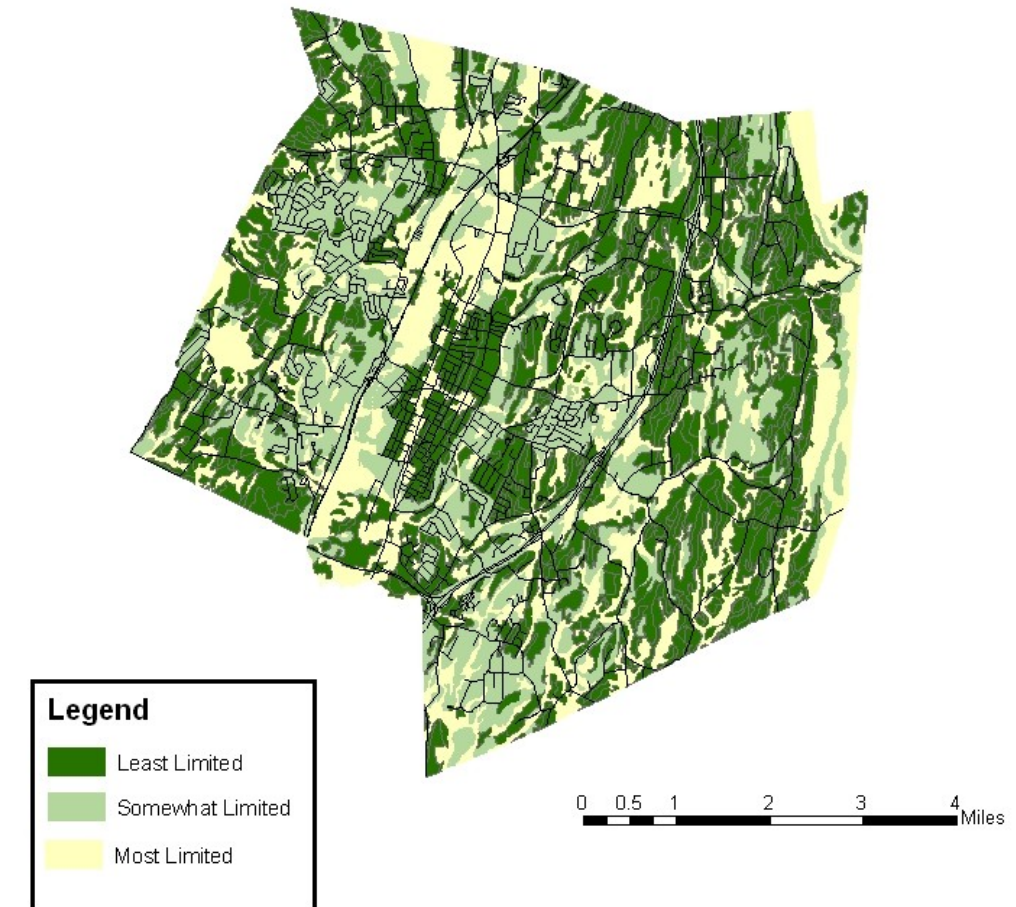


Fig. #4 Dry Detention Basin  
Photo Credit: Tom Ladny, NRCS

<sup>6</sup> The Connecticut DEP requires that field-measured soil infiltration rates be less than 3.0 inches per hour for primary treatment systems. See appendix C: Connecticut Soil Series with high or very high saturated hydraulic conductivity in the substratum.

<sup>7</sup> See Appendix A for additional information about individual practices and soils information.

## Soil Ratings for Detention / Retention Basins



### Advantages of Detention / Retention Basins:

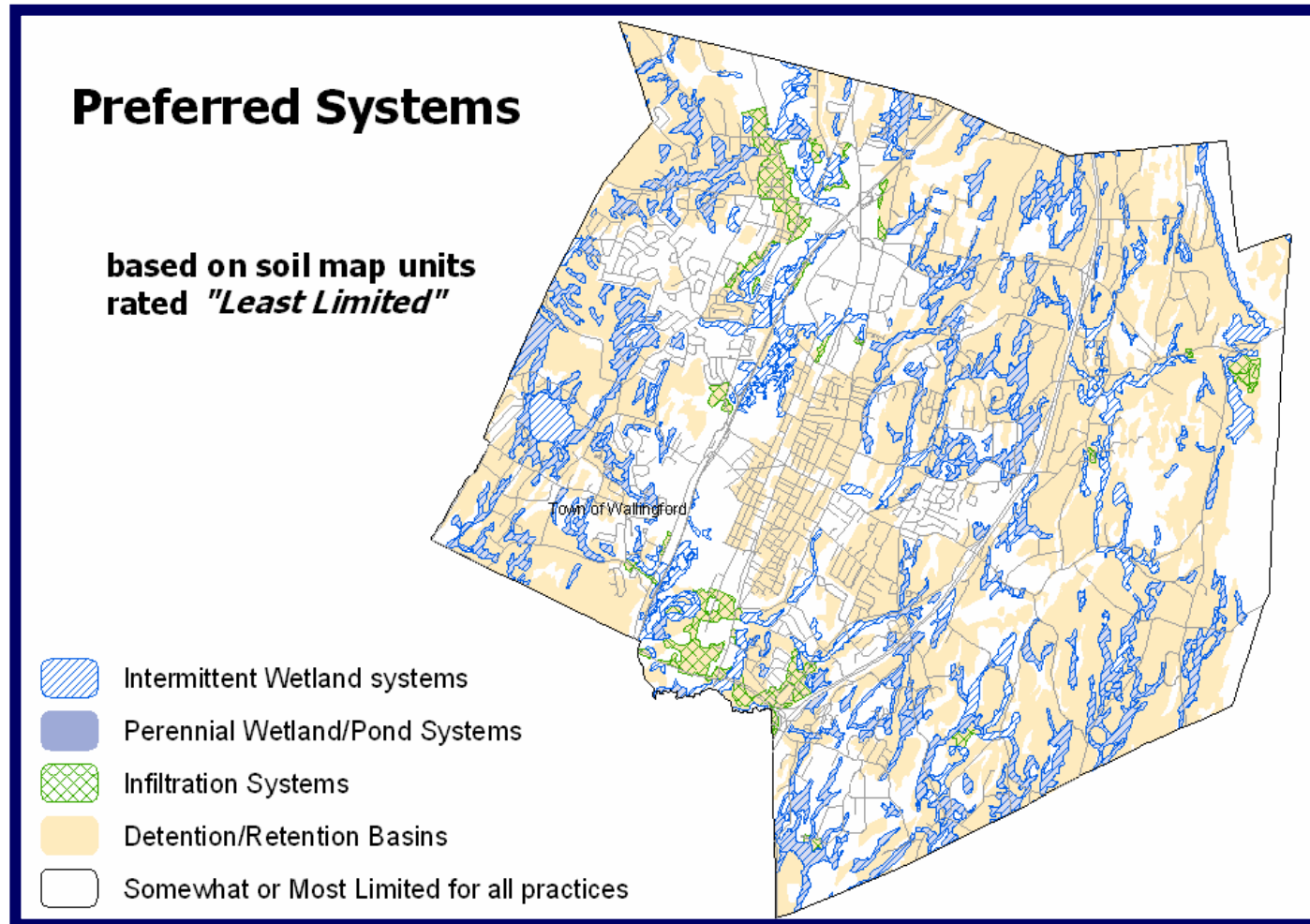
- Suitable on a wide range of soils and sites
- Reduces peak flows

### Disadvantages

- Treatment benefits vary widely due to detention times
- Settled material may be re-suspended by subsequent storms.
- Requires frequent mowing where a lawn appearance is desired



**Stormwater Runoff Management Practice Ratings for Planning or Preliminary Site Review**



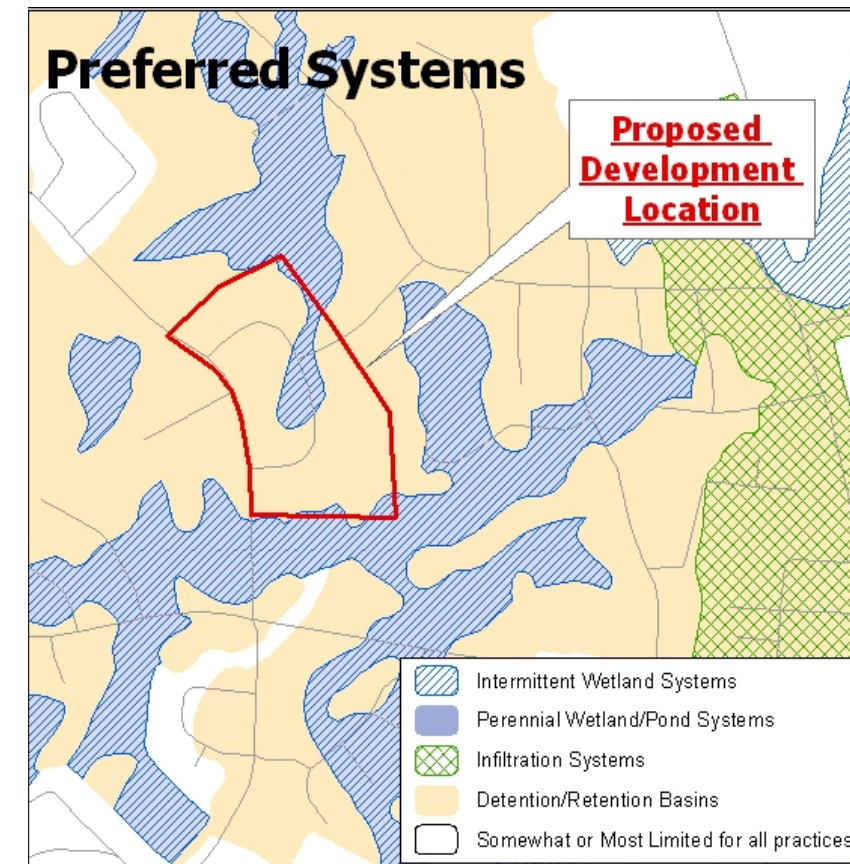
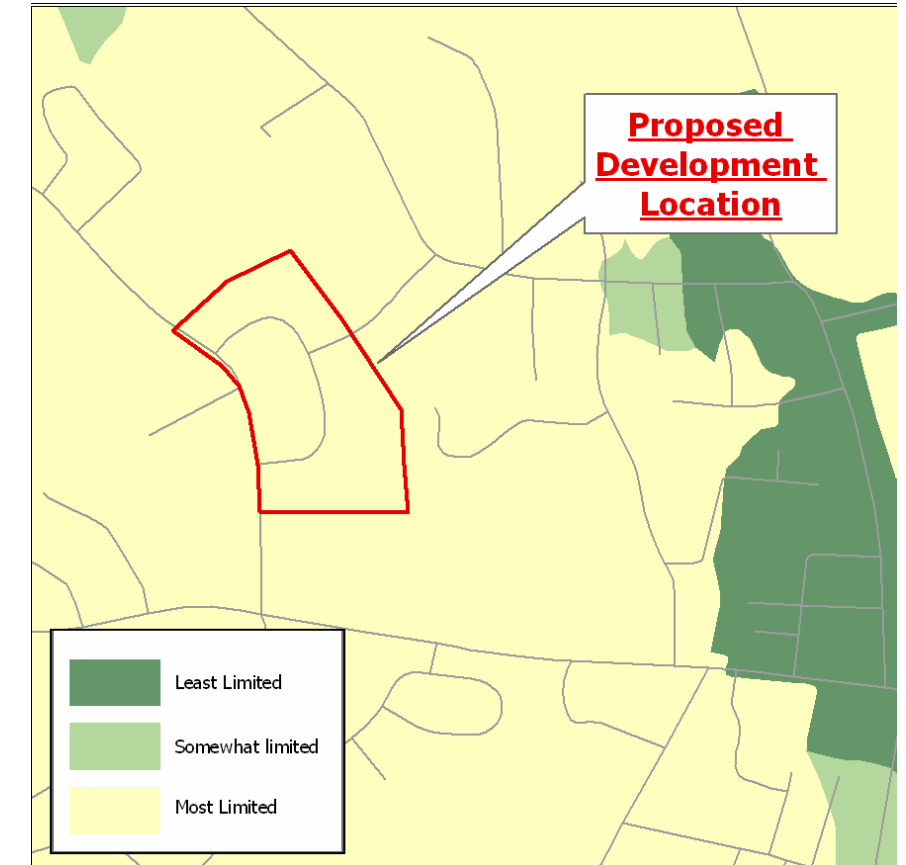
Another way to present these soil based ratings is on one map showing all four practice types and the areas where they are most suitable. Areas displayed on this map show where each practice rated "least limited." In white areas, some practices may have been rated somewhat limited. These areas also include very shallow bedrock, steep slopes, and soils altered by urban land use. Use this map to identify the best choice for a selected area.

**Planning Scenario Using Soil Based Ratings for Storm Water Runoff Management Practice Recommendations:**

A developer comes before your town planning board with a subdivision proposal.

The development proposal includes infiltration trenches to handle storm water runoff from the impervious surfaces.

Looking at your soil suitability map for infiltration systems, you realize that the soils in this area may not perform well for this practice.



On the preferred systems map, it appears that a system using detention/retention basins would function more effectively on this site.

The board recommends an on-site evaluation to confirm the soil condition and adjust the storm water management plan, if appropriate

## **Appendix A: Specific Soil Criteria Used to Develop Each Interpretation**

### **Infiltration Systems**

#### Depth to restrictive layer (bedrock, dense till):

*Soils with <100cm (40") to a restrictive layer are most limited. Soils with >100cm to a restrictive layer are least limited.*

#### Seasonal high water table:

*Soils with a water table within 180 cm (71") of the surface are rated increasingly poorly as the water table approaches 100cm (40"). Water tables less than 100 cm from the surface are most limiting. Soils with no water table within 180 cm are least limited.*

#### Permeability<sup>8</sup> in the top 40" or above a restrictive layer :

*Permeability of  $4\mu\text{m/s}$  (.6in/hr) or less is most limiting, soils become less limited as permeability reaches  $40\mu\text{m/s}$ . (6in/hr) Soils with permeability above this are least limited.*

#### Bulk density:

*Soils with bulk densities of  $1.8\text{g/cm}^3$  or above are rated most limited. Limitation decreases as bulk density decreases. Soils with bulk density below  $1.63\text{g/cm}^3$  are least limited.*

#### Flooding:

*Soils that flood very frequently, frequently, or occasionally are most limited. Soils that flood rarely are somewhat limited. Soils that flood very rarely are somewhat less limited, and soils that do not flood are least limited.*

#### Slope:

*Slopes less than 2.5% are least limited. Slopes become more limiting until at 8% they are most limited.*

### **Detention/Retention Basins**

#### Depth to bedrock:

*Soils are increasingly limited by depth to bedrock. Soils with less than 50 cm (20") to bedrock are most limited. Bedrock below a depth of 152 cm (60") is least limiting.*

#### Hydrologic soil group:

*Soils in Hydrologic Soil Group "D" are most limited. All others are least limited*

#### Flooding:

*Soils that flood very frequently, frequently, occasionally, rarely, or very rarely are most limited.*

#### Slope:

*Soils with slopes under 15% are least limited. Soils are increasingly limited by slope until 35% is reached. Slopes above this are most limiting.*

---

<sup>8</sup> Permeability was determined using saturated hydraulic conductivity (ksat)



## **Perennial Wetland /Pond**

### Seasonal high water table:

*Soils with 15cm (6") or less to a water table during the growing season (May – Oct.) are least limited. Soils become gradually more limited until those with no water table within 200 cm (78") of the surface are most limited.*

### Permeability:

*Soils with permeability less than 1.4 $\mu$ m/s (.2in/hr) are least limited. Soil limitations increase as permeability increases. Soils with permeability over 4 $\mu$ m/s (.6in/hr) are most limited.*

### Hydrologic soil group:

*Soils are weighted by hydrologic soil group with "A" being most limited, "B" being somewhat severely limited, "C" being somewhat limited, and "D" being leastb limited.*

### Slope:

*Slopes less than 2.5% are least limited. Slopes become more limiting until at 8% they are most limited.*

## **Intermittent Wetland Systems**

### Seasonal high water table

*Soils with 15cm or less to a water table during the growing season (May – Oct.) are least limited. Soils become gradually more limited until those with no water table within 200 cm of the surface are most limited.*

### Permeability

*Soils with permeability less than 4 $\mu$ m/s are least limited. Soil limitations increase as permeability increases. Permeability over 141 $\mu$ m/s (4in/hr) is most limiting.*

### Hydrologic soil group

*Soils with hydrologic group A are most limited, all others are least limited*

### Slope

*Slopes less than 2.5% are least limited. Slopes become more limiting until at 8% they are most limited.*

## Appendix B: Definitions of Hydrologic Soil Groups and Flooding Classes

### Hydrologic Soil Groups

- A. Soils with low runoff potential. Soils having high infiltration rates even when thoroughly wetted and consisting chiefly of deep well drained to excessively well-drained sands or gravels.
- B. Soils having moderate infiltration rates even when thoroughly wetted and consisting chiefly of moderately deep to deep, moderately well drained to well drained soils with moderately fine to moderately coarse textures.
- C. Soils having slow infiltration rates even when thoroughly wetted and consisting chiefly of soils with a layer that impedes downward movement of water, or soils with moderately fine to fine textures.
- D. Soils with high runoff potential. Soils having very slow infiltration rates even when thoroughly wetted and consisting chiefly of clay soils with a high swelling potential, soils with a permanent high water table, soils with a claypan or clay layer at or near the surface, and shallow soils over nearly impervious material.

### Flooding Frequency Classes

Flooding frequency class is the number of times flooding occurs over a period of time. The classes of flooding are defined as follows:

- None:** No reasonable possibility of flooding; less than .2 percent chance of flooding in any year (averaging less than 1 time in 500 years).
- Very Rare:** Flooding is very unlikely but possible under extremely unusual weather conditions; less than 1 percent chance of flooding in any year (averaging less than 1 time in 100 years but at least 1 time in 500 years).
- Rare:** Flooding is unlikely but possible under unusual weather conditions; 1 to 5 percent chance of flooding in any year (averaging 5 times in 100 years).
- Occasional:** Flooding is expected infrequently under usual weather conditions; 5 to 50 percent chance of flooding in any year (averaging 50 times in 100 years).
- Frequent:** Flooding is likely to occur often under usual weather conditions; more than a 50 percent chance of flooding in any year, but less than a 50 percent chance of flooding in all months in any year, (averaging 600 times in 100 years).
- Very Frequent:** Flooding is likely to occur very often under usual weather conditions; more than a 50 percent chance of flooding in all months of any year.

**Appendix C: Table 1: Connecticut Soil Series with “High” or “Very High” Permeability (over 6”/hr) in the Substratum**

Agawam	Medomak
Beaches	Merrimac
Boscawen	Millsite
Branford	Moosilauke
Brimfield	Narragansett
Bucksport	Ninigret
Canton	Occum
Chatfield	Ondawa
Copake	Pawcatuck
Deerfield	Penwood
Ellington	Pootatuck
Enfield	Raypol
Fluvaquents	Rippowam
Fredon	Rumney
Gloucester	Saco
Groton	Scarboro
Hadley	Sudbury
Halsey	Suncook
Hartford	Taconic
Haven	Timakwa
Hero	Tisbury
Hinckley	Udifuvents
Hollis	Udipsamments
Ipswich	Walpole
Leicester	Wapping
Lim	Westminster
Loonmeadow	Windsor
Macomber	Yalesville
Manchester	

## Appendix D: Soil Suitability Ratings and Limitations for Stormwater Runoff Management Practices

Codes for Limitations (in parentheses in order of importance) **W**: high water table; **R**: restrictive layer within 40"; **P**: restricted permeability; **F**: flooding; **S**: slope; **A**: subject to seepage; **D**: depth limited to bedrock or water table; **O**: limited water quantity; **B**: limited depth to bedrock.

<b>Map Symbol and Soil Name</b>	<b>Retention/Detention Basin</b> <i>(Single home rain garden)</i>	<b>Infiltration Systems</b> <i>(Commercial rain garden/ bioretention system)</i>	<b>Perennial Wetland Systems</b>	<b>Intermittent Wetland Systems</b>
2 Ridgebury----	Most Limited (D)	Most Limited (W,R,P)	Least Limited	Least Limited
3 Ridgebury----	Most Limited (D)	Most Limited (W,R,P)	Least Limited	Least Limited
Leicester-----	Most Limited (D)	Most Limited (W)	Somewhat Limited (A)	Least Limited
Whitman-----	Most Limited (D)	Most Limited (W,R)	Least Limited	Least Limited
4 Leicester-----	Most Limited (D)	Most Limited (W)	Somewhat Limited (A)	Least Limited
5 Wilbraham----	Most Limited (D)	Most Limited (W,R,P)	Least Limited	Least Limited
6 Wilbraham----	Most Limited (D)	Most Limited (W,R,P)	Least Limited	Least Limited
Menlo-----	Most Limited (D)	Most Limited (W,R,P)	Least Limited	Least Limited
7 Mudgepond--	Most Limited (D)	Most Limited (W,P)	Somewhat Limited (A)	Least Limited
8 Mudgepond--	Most Limited (D)	Most Limited (W,P)	Somewhat Limited (A)	Least Limited
Alden-----	Most Limited (D)	Most Limited (W,P)	Least Limited	Least Limited
9 Scitico-----	Most Limited (D)	Most Limited (W,P)	Least Limited	Least Limited
Shaker-----	Most Limited (D)	Most Limited (W,P)	Least Limited	Least Limited
Maybid-----	Most Limited (D)	Most Limited (W,P)	Least Limited	Least Limited
10 Raynham----	Most Limited (D)	Most Limited (W,P)	Somewhat Limited (Q)	Somewhat Limited (Q)
12 Raypol-----	Most Limited (D)	Most Limited (W)	Somewhat Limited (A)	Least Limited
13 Walpole-----	Most Limited (D)	Most Limited (W)	Somewhat Limited (A)	Least Limited
14 Fredon-----	Most Limited (D)	Most Limited (W)	Somewhat Limited (A)	Least Limited
15 Scarboro----	Most Limited (D)	Most Limited (W)	Somewhat Limited (A)	Least Limited
16 Halsey-----	Most Limited (D)	Most Limited (W)	Somewhat Limited (A)	Least Limited
17 Timakwa----	Most Limited (F,D)	Most Limited (W,F)	Somewhat Limited (A)	Least Limited
Natchaug---	Most Limited (F,D)	Most Limited (W,F)	Least Limited	Least Limited
18 Catden-----	Most Limited (F,D)	Most Limited (W,P,F)	Somewhat Limited (A)	Least Limited
Freetown-----	Most Limited (F,D)	Most Limited (W,P,F)	Somewhat Limited (A)	Least Limited
20A: Ellington--	Least Limited	Most Limited (W)	Most Limited (A,Q)	Most Limited (Q,A)
21A: Ninigret--	Least Limited	Most Limited (W)	Somewhat Limited (A,Q)	Least Limited
Tisbury---	Least Limited	Most Limited (W)	Somewhat Limited (A,Q)	Least Limited
22A: Hero-----	Least Limited	Most Limited (W)	Most Limited (A,Q)	Most Limited (Q,A)
22B: Hero-----	Least Limited	Most Limited (W,S)	Most Limited (A,Q,S)	Most Limited (Q,S,A)
23A: Sudbury--	Least Limited	Most Limited (W)	Most Limited (A,Q)	Most Limited (Q,A)
24A: Deerfield--	Least Limited	Most Limited (W)	Most Limited (A,Q)	Most Limited (A,Q)
25A: Brancroft-	Least Limited	Most Limited (W,P)	Somewhat Limited (A)	Least Limited
25B: Brancroft-	Least Limited	Most Limited (W,P,S)	Somewhat Limited (S,A)	Somewhat Limited (S)
25C: Brancroft-	Least Limited	Most Limited (W,P,S)	Most Limited (S,A)	Most Limited (S)
26A: Berlin-----	Least Limited	Most Limited (W,P)	Somewhat Limited (A)	Least Limited
26B: Berlin-----	Least Limited	Most Limited (W,P,S)	Somewhat Limited (S,A)	Somewhat Limited (S)
27A: Belgrade--	Least Limited	Most Limited (W,P)	Most Limited (A,Q)	Most Limited (Q)
28A: Elmridge--	Least Limited	Most Limited (W,P)	Somewhat Limited (A)	Least Limited
28B: Elmridge--	Least Limited	Most Limited (W,P,S)	Somewhat Limited (S,A)	Somewhat Limited (S)
29A: Agawam--	Least Limited	Least Limited	Most Limited (A,Q)	Most Limited (A,Q)
29B: Agawam--	Least Limited	Somewhat Limited (S)	Most Limited (A,Q,S)	Most Limited (A,Q,S)
29C: Agawam--	Least Limited	Most Limited (S)	Most Limited (S, A,Q)	Most Limited (S,A,Q)
30A: Branford-	Least Limited	Least Limited	Most Limited (A,Q)	Most Limited (Q,A)
30B: Branford	Least Limited	Somewhat Limited (S)	Most Limited (A,Q,S)	Most Limited (Q,S,A)
30C: Branford	Least Limited	Most Limited (S)	Most Limited (S, A,Q)	Most Limited (S,Q,A)
31A: Copake---	Least Limited	Least Limited	Most Limited (A,Q)	Most Limited (Q,A)
31B: Copake---	Least Limited	Somewhat Limited (S)	Most Limited (A,Q,S)	Most Limited (Q,S,A)



<b>Map Symbol and Soil Name</b>	<b>Retention/Detention Basin</b> (Single home rain garden)	<b>Infiltration Systems</b> (Commercial rain garden/ bioretention system)	<b>Perennial Wetland Systems</b>	<b>Intermittent Wetland Systems</b>
31C: Copake---	Least Limited	Most Limited (S)	Most Limited (A,S,Q)	Most Limited (S,Q,A)
32A: Haven-----	Least Limited	Least Limited	Most Limited (A,Q)	Most Limited (A,Q)
Enfield-----	Least Limited	Least Limited	Most Limited (A,Q)	Most Limited (Q,A)
32B: Haven	Least Limited	Somewhat Limited (S)	Most Limited (A,Q,S)	Most Limited (A,Q,S)
Enfield-----	Least Limited	Somewhat Limited (S)	Most Limited (A,Q,S)	Most Limited (Q,S,A)
32C: Haven	Least Limited	Most Limited (S)	Most Limited (A,S,Q)	Most Limited (S,A,Q)
Enfield	Least Limited	Most Limited (S)	Most Limited (A,S,Q)	Most Limited (S,Q,A)
33A: Hartford---	Least Limited	Least Limited	Most Limited (A,Q)	Most Limited (Q,A)
33B: Hartford---	Least Limited	Somewhat Limited (S)	Most Limited (A,Q,S)	Most Limited (Q,S,A)
34A: Merrimac	Least Limited	Least Limited	Most Limited (A,Q)	Most Limited (Q,A)
34B: Merrimac-	Least Limited	Somewhat Limited (S)	Most Limited (A,Q)	Most Limited (Q,S,A)
34C: Merrimac-	Least Limited	Most Limited (S)	Most Limited (A,S,Q)	Most Limited (S,Q,A)
35A: Penwood-	Least Limited	Least Limited	Most Limited (A,Q)	Most Limited (A,Q)
35B: Penwood	Least Limited	Somewhat Limited (S)	Most Limited (A,Q,S)	Most Limited (A,Q,S)
36A: Windsor	Least Limited	Least Limited	Most Limited (A,Q)	Most Limited (A,Q)
36B: Windsor---	Least Limited	Somewhat Limited (S)	Most Limited (A,Q,S)	Most Limited (A,Q,S)
36C: Windsor	Least Limited	Most Limited (S)	Most Limited (A,S,Q)	Most Limited (A,S,Q)
37A:Manchester	Least Limited	Least Limited	Most Limited (A,Q)	Most Limited (A,Q)
37C: Manchester	Least Limited	Most Limited (S)	Most Limited (A,S,Q)	Most Limited (A,S,Q)
37E: Manchester	Most Limited (S)	Most Limited (S)	Most Limited (A,S,Q)	Most Limited (A,S,Q)
38A: Hinckley	Least Limited	Least Limited	Most Limited (A,Q)	Most Limited (A,Q)
38C: Hinckley	Least Limited	Most Limited (S)	Most Limited (A,S,Q)	Most Limited (A,S,Q)
38E: Hinckley-----	Most Limited (S)	Most Limited (S)	Most Limited (A,S,Q)	Most Limited (A,S,Q)
39A: Groton-----	Least Limited	Least Limited	Most Limited (A,Q)	Most Limited (A,Q)
39C: Groton-----	Least Limited	Most Limited (S)	Most Limited (A,S,Q)	Most Limited (A,S,Q)
39E: Groton-----	Most Limited (S)	Most Limited (S)	Most Limited (A,S,Q)	Most Limited (A,S,Q)
40A: Ludlow-----	Least Limited	Most Limited (W,R,P)	Most Limited (Q,A)	Most Limited (Q)
40B: Ludlow-----	Least Limited	Most Limited (W,R,P,S)	Most Limited (Q,S,A)	Most Limited (Q,S)
41B: Ludlow-----	Least Limited	Most Limited (W,R,P,S)	Most Limited (Q,S,A)	Most Limited (Q,S)
42C: Ludlow-----	Least Limited	Most Limited (W,R,S,P)	Most Limited (S,Q,A)	Most Limited (S,Q)
43A: Rainbow	Least Limited	Most Limited (W,R,P)	Somewhat Limited (A)	Least Limited
43B: Rainbow---	Least Limited	Most Limited (W,R,P,S)	Somewhat Limited (S,A)	Somewhat Limited (S)
44B: Rainbow-----	Least Limited	Most Limited (W,R,P,S)	Somewhat Limited (S,A)	Somewhat Limited (S)
45A: Woodbridge	Least Limited	Most Limited (W,R,P)	Somewhat Limited (A)	Least Limited
45B: Woodbridge	Least Limited	Most Limited (W,R,P,S)	Somewhat Limited (S,A)	Somewhat Limited (S)
45C Woodbridge:	Least Limited	Most Limited (W,S,R,P)	Most Limited (S,A)	Most Limited (S)
46B: Woodbridge	Least Limited	Most Limited (W,R,P,S)	Somewhat Limited (S,A)	Somewhat Limited (S)
46C: Woodbridge	Least Limited	Most Limited (W,S,R,P)	Most Limited (S,A)	Most Limited (S)
47C: Woodbridge	Least Limited	Most Limited (W,R,S,P)	Most Limited (S,A)	Most Limited (S)
48B: Georgia-----	Least Limited	Most Limited (W,P,S)	Somewhat Limited (A,S)	Somewhat Limited (S)
Amenia-----	Least Limited	Most Limited (W,P,S)	Somewhat Limited (A,S)	Somewhat Limited (S)
48C: Georgia-----	Least Limited	Most Limited (W,S,P)	Most Limited (S,A)	Most Limited (S)
Amenia-----	Least Limited	Most Limited (W,S,P)	Most Limited (S,A)	Most Limited (S)
49B: Georgia	Least Limited	Most Limited (W,P,S)	Somewhat Limited (A,S)	Somewhat Limited (S)
Amenia	Least Limited	Most Limited (W,P,S)	Somewhat Limited (A,S)	Somewhat Limited (S)
49C: Georgia-----	Least Limited	Most Limited (W,S,P)	Most Limited (S,A)	Most Limited (S)
Amenia-----	Least Limited	Most Limited (W,S,P)	Most Limited (S,A)	Most Limited (S)
50A: Sutton	Least Limited	Most Limited (W,P)	Most Limited (A,Q)	Most Limited (Q)
50B: Sutton	Least Limited	Most Limited (R,W,S,P)	Most Limited (A,Q,S)	Most Limited (Q,S)
51B: Sutton-----	Least Limited	Most Limited (W,S,P)	Most Limited (A,Q,S)	Most Limited (Q,S)
52C: Sutton	Least Limited	Most Limited (W,S,P)	Most Limited (A,S,Q)	Most Limited (S,Q)

<b>Map Symbol and Soil Name</b>	<b>Retention/Detention Basin</b> <i>(Single home rain garden)</i>	<b>Infiltration Systems</b> <i>(Commercial rain garden/ bioretention system)</i>	<b>Perennial Wetland Systems</b>	<b>Intermittent Wetland Systems</b>
53A: Wapping	Least Limited	Most Limited (W)	Most Limited (A,Q)	Most Limited (Q)
53B: Wapping	Least Limited	Most Limited (S,W)	Most Limited (A,Q,S)	Most Limited (Q,S)
54B: Wapping	Least Limited	Most Limited (W,S)	Most Limited (A,Q,S)	Most Limited (Q,S)
55A: Watchaug	Least Limited	Most Limited (W,P)	Most Limited (A,Q)	Most Limited (Q)
55B: Watchaug-	Least Limited	Most Limited (W,S,P)	Most Limited (A,Q,S)	Most Limited (Q,S)
56B: Watchaug	Least Limited	Most Limited (W,S,P)	Most Limited (A,Q,S)	Most Limited (Q,S)
57B: Gloucester-	Least Limited	Somewhat Limited (S)	Most Limited (A,Q,S)	Most Limited (Q,S,A)
57C: Gloucester	Least Limited	Most Limited (S)	Most Limited (A,S,Q)	Most Limited (S,Q,A)
57D: Gloucester	Somewhat Limited (S)	Most Limited (S)	Most Limited (A,S,Q)	Most Limited (S,Q,A)
58B: Gloucester	Least Limited	Somewhat Limited (S)	Most Limited (A,Q,S)	Most Limited (A,Q,S)
58C: Gloucester	Least Limited	Most Limited (S)	Most Limited (A,S,Q)	Most Limited (A,S,Q)
59C: Gloucester	Least Limited	Most Limited (S)	Most Limited (A,S,Q)	Most Limited (A,S,Q)
59D: Gloucester	Somewhat Limited (S)	Most Limited (S)	Most Limited (A,S,Q)	Most Limited (A,S,Q)
60B: Canton	Least Limited	Somewhat Limited (S)	Most Limited (A,Q,S)	Most Limited (Q,S,A)
Charlton	Least Limited	Somewhat Limited (S,P)	Most Limited (A,Q,S)	Most Limited (Q,S)
60C: Canton---	Least Limited	Most Limited (S)	Most Limited (A,S,Q)	Most Limited (S,Q,A)
Charlton	Least Limited	Most Limited (S,P)	Most Limited (A,S,Q)	Most Limited (S,Q)
60D: Canton	Somewhat Limited (S)	Most Limited (S)	Most Limited (A,S,Q)	Most Limited (S,Q,A)
Charlton	Somewhat Limited (S)	Most Limited (S,P)	Most Limited (A,S,Q)	Most Limited (S,Q)
61B: Canton	Least Limited	Somewhat Limited (S)	Most Limited (A,Q,S)	Most Limited (Q,S,A)
Charlton	Least Limited	Somewhat Limited (S,P)	Most Limited (A,Q,S)	Most Limited (Q,S)
61C: Canton	Least Limited	Most Limited (S)	Most Limited (A,S,Q)	Most Limited (S,Q,A)
Charlton	Least Limited	Most Limited (S,P)	Most Limited (A,S,Q)	Most Limited (S,Q)
62C: Canton	Least Limited	Most Limited (S)	Most Limited (A,S,Q)	Most Limited (S,Q,A)
Charlton	Least Limited	Most Limited (S,P)	Most Limited (A,S,Q)	Most Limited (S,Q)
62D: Canton	Somewhat Limited (S)	Most Limited (S)	Most Limited (A,S,Q)	Most Limited (S,Q,A)
Charlton	Somewhat Limited (S)	Most Limited (S,P)	Most Limited (A,S,Q)	Most Limited (S,Q)
63B: Cheshire	Least Limited	Somewhat Limited (S,P)	Most Limited (A,Q,S)	Most Limited (Q,S)
63C: Cheshire	Least Limited	Most Limited (S,P)	Most Limited (A,S,Q)	Most Limited (S,Q)
63D: Cheshire	Somewhat Limited (S)	Most Limited (S,P)	Most Limited (A,S,Q)	Most Limited (S,Q)
64B: Cheshire	Least Limited	Somewhat Limited (S,P)	Most Limited (A,Q,S)	Most Limited (Q,S)
64C: Cheshire	Least Limited	Most Limited (S,P)	Most Limited (A,S,Q)	Most Limited (S,Q)
65C: Cheshire	Least Limited	Most Limited (S,P)	Most Limited (A,S,Q)	Most Limited (S,Q)
65D: Cheshire	Somewhat Limited (S)	Most Limited (S,P)	Most Limited (A,S,Q)	Most Limited (S,Q)
66B:Narragansett	Least Limited	Somewhat Limited (S)	Most Limited (A,Q,S)	Most Limited (Q,S)
66C:Narragansett	Least Limited	Most Limited (S)	Most Limited (A,S,Q)	Most Limited (S,Q)
67B:Narragansett	Least Limited	Somewhat Limited (S)	Most Limited (A,Q,S)	Most Limited (Q,S)
67C:Narragansett	Least Limited	Most Limited (S)	Most Limited (A,S,Q)	Most Limited (S,Q)
68C:Narragansett	Least Limited	Most Limited (S)	Most Limited (A,S,Q)	Most Limited (S,Q)
68D:Narragansett	Somewhat Limited (S)	Most Limited (S)	Most Limited (A,S,Q)	Most Limited (S,Q)
69B: Yalesville	Somewhat Limited (B)	Most Limited (R,S,P)	Most Limited (Q,S,A)	Most Limited (Q,S)
69C: Yalesville	Somewhat Limited (B)	Most Limited (S,R,P)	Most Limited (S,Q,A)	Most Limited (S,Q)
70C: Branford	Least Limited	Most Limited (S)	Most Limited (A,S,Q)	Most Limited (S,Q,A)
Holyoke	Most Limited (B)	Most Limited (R,S,P)	Most Limited (S,Q)	Most Limited (S,Q)
71C: Brookfield	Least Limited	Most Limited (S,P)	Most Limited (A,S,Q)	Most Limited (S,Q)
Brimfield	Most Limited (B)	Most Limited (R,S,P)	Most Limited (S,Q)	Most Limited (S,Q)
71E: Brookfield	Most Limited (S)	Most Limited (S,P)	Most Limited (A,S,Q)	Most Limited (S,Q)
Brimfield-	Most Limited (B,S)	Most Limited (R,S,P)	Most Limited (S,Q)	Most Limited (S,Q)
73C: Charlton	Least Limited	Most Limited (S,P)	Most Limited (A,S,Q)	Most Limited (S,Q)
Chatfield	Most Limited (B)	Most Limited (S,R,P)	Most Limited (S,Q,A)	Most Limited (S,Q)
73E: Charlton	Most Limited (S)	Most Limited (S,P)	Most Limited (A,S,Q)	Most Limited (S,Q)
Chatfield	Most Limited (B,S)	Most Limited (S,R,P)	Most Limited (S,Q,A)	Most Limited (S,Q)
74C:Narragansett	Least Limited	Most Limited (S)	Most Limited (A,S,Q)	Most Limited (S,Q)
Hollis	Most Limited (B)	Most Limited (R,S,P)	Most Limited (S,Q)	Most Limited (S,Q)

<b>Map Symbol and Soil Name</b>	<b>Retention/Detention Basin</b> <i>(Single home rain garden)</i>	<b>Infiltration Systems</b> <i>(Commercial rain garden/ bioretention system)</i>	<b>Perennial Wetland Systems</b>	<b>Intermittent Wetland Systems</b>
75C: Hollis	Most Limited (B)	Most Limited (R,S,P)	Most Limited (S,Q)	Most Limited (S,Q)
Chatfield	Most Limited (B)	Most Limited (S,R,P)	Most Limited (S,Q,A)	Most Limited (S,Q)
Rock Outcrop	Most Limited (B)	Most Limited (R,S,P)	Most Limited (S,Q)	Most Limited (S,Q)
75E: Hollis	Most Limited (B,S)	Most Limited (R,S,P)	Most Limited (S,Q)	Most Limited (S,Q)
Chatfield	Most Limited (B,S)	Most Limited (S,R,P)	Most Limited (S,Q,A)	Most Limited (S,Q)
Rock Outcrop	Most Limited (B,S)	Most Limited (R,S,P)	Most Limited (S,Q)	Most Limited (S,Q)
76E:Rock Outcrop	Most Limited (B,S)	Most Limited (R,S,P)	Most Limited (S,Q)	Most Limited (S,Q)
Hollis	Most Limited (B,S)	Most Limited (R,S,P)	Most Limited (S,Q)	Most Limited (S,Q)
76F:Rock Outcrop	Most Limited (S,B)	Most Limited (R,S,P)	Most Limited (S,Q)	Most Limited (S,Q)
Hollis	Most Limited (S,B)	Most Limited (R,S,P)	Most Limited (S,Q)	Most Limited (S,Q)
77C: Cheshire	Least Limited	Most Limited (S,P)	Most Limited (A,S,Q)	Most Limited (S,Q)
Holyoke	Most Limited (B)	Most Limited (R,S,P)	Most Limited (S,Q)	Most Limited (S,Q)
77D: Cheshire	Somewhat Limited (S)	Most Limited (S,P)	Most Limited (A,S,Q)	Most Limited (S,Q)
Holyoke	Most Limited (B,S)	Most Limited (R,S,P)	Most Limited (S,Q)	Most Limited (S,Q)
78C: Holyoke	Most Limited (B)	Most Limited (R,S,P)	Most Limited (S,Q)	Most Limited (S,Q)
Rock Outcrop	Most Limited (B)	Most Limited (R,S,P)	Most Limited (S,Q)	Most Limited (S,Q)
78E: Holyoke	Most Limited (B,S)	Most Limited (R,S,P)	Most Limited (S,Q)	Most Limited (S,Q)
Rock Outcrop	Most Limited (B,S)	Most Limited (R,S,P)	Most Limited (S,Q)	Most Limited (S,Q)
79E:Rock outcrop	Most Limited (B)	Most Limited (R,S,P)	Most Limited (S,Q)	Most Limited (S,Q)
Holyoke	Most Limited (B,S)	Most Limited (R,S,P)	Most Limited (S,Q)	Most Limited (S,Q)
80B: Bernardston	Least Limited	Most Limited (W,R,P,S)	Most Limited (Q,S,A)	Most Limited (Q,S)
80C: Bernardston	Least Limited	Most Limited (W,R,S,P)	Most Limited (S,Q,A)	Most Limited (S,Q)
81C Bernardston	Least Limited	Most Limited (W,R,S,P)	Most Limited (S,Q,A)	Most Limited (S,Q)
81D Bernardston	Somewhat Limited (S)	Most Limited (W,R,S,P)	Most Limited (S,Q,A)	Most Limited (S,Q)
82B Broadbrook	Least Limited	Most Limited (W,R,P,S)	Most Limited (Q,S,A)	Most Limited (Q,S)
82C Broadbrook	Least Limited	Most Limited (W,S,R,P)	Most Limited (S,Q,A)	Most Limited (S,Q)
82D Broadbrook	Somewhat Limited (S)	Most Limited (W,S,R,P)	Most Limited (S,Q,A)	Most Limited (S,Q)
83B Broadbrook	Least Limited	Most Limited (W,R,P,S)	Most Limited (Q,S,A)	Most Limited (Q,S)
83C Broadbrook	Least Limited	Most Limited (W,S,R,P)	Most Limited (S,Q,A)	Most Limited (S,Q)
84B Paxton	Least Limited	Most Limited (W,R,P,S)	Most Limited (Q,S,A)	Most Limited (Q,S)
Montauk	Least Limited	Most Limited (W,R,P,S)	Most Limited (Q,S,A)	Most Limited (Q,S)
84C Paxton	Least Limited	Most Limited (W,R,S,P)	Most Limited (S,Q,A)	Most Limited (S,Q)
Montauk-	Least Limited	Most Limited (W,R,S,P)	Most Limited (S,Q,A)	Most Limited (S,Q)
84D Paxton	Somewhat Limited (S)	Most Limited (W,S,R,P)	Most Limited (S,Q,A)	Most Limited (S,Q)
Montauk-	Somewhat Limited (S)	Most Limited (W,R,S,P)	Most Limited (S,Q,A)	Most Limited (S,Q)
85B Paxton	Least Limited	Most Limited (W,R,P,S)	Most Limited (Q,S,A)	Most Limited (Q,S)
Montauk	Least Limited	Most Limited (W,R,S,P)	Most Limited (Q,S,A)	Most Limited (Q,S)
85C Paxton	Least Limited	Most Limited (W,S,R,P)	Most Limited (S,Q,A)	Most Limited (S,Q)
Montauk	Least Limited	Most Limited (W,R,S,P)	Most Limited (S,Q,A)	Most Limited (S,Q)
86C Paxton	Least Limited	Most Limited (W,S,R,P)	Most Limited (S,Q,A)	Most Limited (S,Q)
Montauk-	Least Limited	Most Limited (W,R,S,P)	Most Limited (S,Q,A)	Most Limited (S,Q)
86D Paxton	Somewhat Limited (S)	Most Limited (W,S,R,P)	Most Limited (S,Q,A)	Most Limited (S,Q)
Montauk-	Somewhat Limited (S)	Most Limited (W,R,S,P)	Most Limited (S,Q,A)	Most Limited (S,Q)
87B Wethersfield	Least Limited	Most Limited (W,R,P,S)	Most Limited (Q,S,A)	Most Limited (Q,S)
87C Wethersfield	Least Limited	Most Limited (W,S,R,P)	Most Limited (S,Q,A)	Most Limited (S,Q)
87D Wethersfield	Somewhat Limited (S)	Most Limited (W,S,R,P)	Most Limited (S,Q,A)	Most Limited (S,Q)
88B Wethersfield	Least Limited	Most Limited (W,R,P,S)	Most Limited (Q,S,A)	Most Limited (Q,S)
88C Wethersfield	Least Limited	Most Limited (W,S,R,P)	Most Limited (S,Q,A)	Most Limited (S,Q)
89C Wethersfield	Least Limited	Most Limited (W,S,R,P)	Most Limited (S,Q,A)	Most Limited (S,Q)
89D Wethersfield	Somewhat Limited (S)	Most Limited (W,S,R,P)	Most Limited (S,Q,A)	Most Limited (S,Q)
90B Stockbridge	Least Limited	Most Limited (P,R,S)	Most Limited (Q,A,S)	Most Limited (Q,S)
90C Stockbridge	Least Limited	Most Limited (S,P,R)	Most Limited (S,Q,A)	Most Limited (S,Q)
90D Stockbridge	Somewhat Limited (S)	Most Limited (S,P,R)	Most Limited (S,Q,A)	Most Limited (S,Q)
91B Stockbridge	Least Limited	Most Limited (P,R,S)	Most Limited (Q,A,S)	Most Limited (Q,S)
91C Stockbridge	Least Limited	Most Limited (S,P,R)	Most Limited (S,Q,A)	Most Limited (S,Q)
91D Stockbridge	Somewhat Limited (S)	Most Limited (S,P,R)	Most Limited (S,Q,A)	Most Limited (S,Q)
92B Nellis	Least Limited	Most Limited (R,P,S)	Most Limited (A,Q,S)	Most Limited (Q,S)

<b>Map Symbol and Soil Name</b>	<b>Retention/Detention Basin</b> <i>(Single home rain garden)</i>	<b>Infiltration Systems</b> <i>(Commercial rain garden/ bioretention system)</i>	<b>Perennial Wetland Systems</b>	<b>Intermittent Wetland Systems</b>
92C Nellis	Least Limited	Most Limited (S,R,P)	Most Limited (A,S,Q)	Most Limited (S,Q)
92D Nellis	Somewhat Limited (S)	Most Limited (S,R,P)	Most Limited (A,S,Q)	Most Limited (S,Q)
93C Nellis	Least Limited	Most Limited (S,R,P)	Most Limited (A,S,Q)	Most Limited (S,Q)
94C Farmington	Most Limited (B)	Most Limited (R,S,P)	Most Limited (S,Q)	Most Limited (S,Q)
Nellis-	Least Limited	Most Limited (S,R,P)	Most Limited (A,S,Q)	Most Limited (S,Q)
94E Farmington	Most Limited (B,S)	Most Limited (R,S,P)	Most Limited (S,Q)	Most Limited (S,Q)
Nellis	Somewhat Limited (S)	Most Limited (S,R,P)	Most Limited (A,S,Q)	Most Limited (S,Q)
95C Farmington	Most Limited (B)	Most Limited (R,S,P)	Most Limited (S,Q)	Most Limited (S,Q)
Rock Outcrop	Most Limited (B)	Most Limited (R,S)	Most Limited (S,Q)	Most Limited (S,Q)
95E Farmington	Most Limited (B,S)	Most Limited (R,S,P)	Most Limited (S,Q)	Most Limited (S,Q)
Rock Outcrop	Most Limited (B,S)	Most Limited (R,S)	Most Limited (S,Q)	Most Limited (S,Q)
96 Ipswich	Most Limited (F,D)	Most Limited (W,F,R)	Somewhat Limited (A)	Least Limited
97: Pawcatuck	Most Limited (F,D)	Most Limited (W,F,R)	Somewhat Limited (A)	Somewhat Limited (A)
98: Westbrook	Most Limited (F,D)	Most Limited (W,F)	Least Limited	Least Limited
99: Westbrook	Most Limited (F,D)	Most Limited (W,F)	Least Limited	Least Limited
100 Suncook	Most Limited (F)	Most Limited (F)	Most Limited (A,Q)	Most Limited (A,Q)
101 Occum	Most Limited (F)	Most Limited (F)	Most Limited (A,Q)	Most Limited (Q,A)
102 Pootatuck	Most Limited (F)	Most Limited (W,F)	Most Limited (A,Q)	Most Limited (Q,A)
103: Rippowam	Most Limited (F,D)	Most Limited (W,F)	Somewhat Limited (A)	Least Limited
104 Bash	Most Limited (F,D)	Most Limited (W,F,P)	Least Limited	Least Limited
105 Hadley	Most Limited (F)	Most Limited (F,P,W)	Most Limited (A,Q)	Most Limited (Q)
106: Winooski	Most Limited (F)	Most Limited (W,F,P)	Most Limited (A,Q)	Most Limited (Q)
107: Limerick	Most Limited (F,D)	Most Limited (W,F,P)	Somewhat Limited (A)	Least Limited
Lim	Most Limited (F,D)	Most Limited (W,F)	Somewhat Limited (A)	Least Limited
108 Saco	Most Limited (F,D)	Most Limited (W,F)	Somewhat Limited (A)	Least Limited
109 Fluvaquents	Most Limited (F,D)	Most Limited (W,F)	Somewhat Limited (A)	Least Limited
Udfluvents	Most Limited (F)	Most Limited (F)	Most Limited (A,Q)	Most Limited (Q)
221A Ninigret	Least Limited	Most Limited (W)	Somewhat Limited (A)	Least Limited
Urban Land	Most Limited (D)	Most Limited (P)	Most Limited (A,Q)	Most Limited (A,Q)
224A Deerfield	Least Limited	Most Limited (W)	Most Limited (A,Q)	Most Limited (A,Q)
Urban Land	Most Limited (D)	Most Limited (P)	Most Limited (A,Q)	Most Limited (A,Q)
225B Brancroft	Least Limited	Most Limited (W,P,S)	Somewhat Limited (A,S)	Somewhat Limited (S)
Urban Land	Most Limited (D)	Most Limited (P,S)	Most Limited (A,Q,S)	Most Limited (A,Q,S)
226B Berlin	Least Limited	Most Limited (W,P,S)	Somewhat Limited (A,S)	Somewhat Limited (S)
Urban Land	Most Limited (D)	Most Limited (P,S)	Most Limited (A,Q,S)	Most Limited (A,Q,S)
228B Elmridge	Least Limited	Most Limited (W,P,R,S)	Somewhat Limited (A,S)	Somewhat Limited (S)
Urban Land	Most Limited (D)	Most Limited (P,S)	Most Limited (A,Q,S)	Most Limited (A,Q,S)
229B Agawam	Least Limited	Somewhat Limited (S)	Most Limited (A,Q,S)	Most Limited (A,Q,S)
Urban Land	Most Limited (D)	Most Limited (P,S)	Most Limited (A,Q,S)	Most Limited (A,Q,S)
229C Agawam	Least Limited	Most Limited (S)	Most Limited (A,S,Q)	Most Limited (S,A,Q)
Urban Land	Most Limited (D)	Most Limited (S,P)	Most Limited (S,A,Q)	Most Limited (S,A,Q)
230B Branford	Least Limited	Somewhat Limited (S)	Most Limited (A,Q,S)	Most Limited (Q,A,S)
Urban Land	Most Limited (D)	Most Limited (P,S)	Most Limited (A,Q,S)	Most Limited (A,Q,S)
230C Branford	Least Limited	Most Limited (S)	Most Limited (A,S,Q)	Most Limited (S,Q,A)
Urban Land	Most Limited (D)	Most Limited (S,P)	Most Limited (S,A,Q)	Most Limited (S,A,Q)
232B Haven	Least Limited	Somewhat Limited (S)	Most Limited (A,Q,S)	Most Limited (A,Q,S)
Urban Land	Most Limited (D)	Most Limited (P,S)	Most Limited (A,Q,S)	Most Limited (A,Q,S)
234B Merrimac	Least Limited	Somewhat Limited (S)	Most Limited (A,Q,S)	Most Limited (Q,A,S)
Urban Land	Most Limited (D)	Most Limited (P,S)	Most Limited (A,Q,S)	Most Limited (A,Q,S)
235B Penwood	Least Limited	Somewhat Limited (S)	Most Limited (A,Q,S)	Most Limited (A,Q,S)



<b>Map Symbol and Soil Name</b>	<b>Retention/Detention Basin</b> <i>(Single home rain garden)</i>	<b>Infiltration Systems</b> <i>(Commercial rain garden/ bioretention system)</i>	<b>Perennial Wetland Systems</b>	<b>Intermittent Wetland Systems</b>
Urban Land	Most Limited (D)	Most Limited (P,S)	Most Limited (A,Q,S)	Most Limited (A,Q,S)
236B Windsor	Least Limited	Somewhat Limited (S)	Most Limited (A,Q,S)	Most Limited (A,Q,S)
Urban Land	Most Limited (D)	Most Limited (P,S)	Most Limited (A,Q,S)	Most Limited (A,Q,S)
237A Manchester	Least Limited	Least Limited	Most Limited (A,Q)	Most Limited (A,Q)
Urban Land	Most Limited (D)	Most Limited (P)	Most Limited (A,Q)	Most Limited (A,Q)
237C Manchester	Least Limited	Most Limited (S)	Most Limited (A,S,Q)	Most Limited (A,S,Q)
Urban Land	Most Limited (D)	Most Limited (S,P)	Most Limited (S,A,Q)	Most Limited (S,A,Q)
238A Hinckley	Least Limited	Least Limited	Most Limited (A,Q)	Most Limited (A,Q)
Urban Land	Most Limited (D)	Most Limited (P)	Most Limited (A,Q)	Most Limited (A,Q)
238C Hinckley	Least Limited	Most Limited (S)	Most Limited (A,S,Q)	Most Limited (A,S,Q)
Urban Land	Most Limited (D)	Most Limited (S,P)	Most Limited (S,A,Q)	Most Limited (S,A,Q)
240B Ludlow	Least Limited	Most Limited (W,R,P,S)	Most Limited (Q,A,S)	Most Limited (Q,S)
Urban Land	Most Limited (D)	Most Limited (P,S)	Most Limited (A,Q,S)	Most Limited (A,Q,S)
243B Rainbow	Least Limited	Most Limited (W,R,P,S)	Somewhat Limited (A,S)	Somewhat Limited (S)
Urban Land	Most Limited (D)	Most Limited (P,S)	Most Limited (A,Q,S)	Most Limited (A,Q,S)
245B Woodbridge	Least Limited	Most Limited (W,R,P,S)	Somewhat Limited (A,S)	Somewhat Limited (S)
Urban Land	Most Limited (D)	Most Limited (P,S)	Most Limited (A,Q,S)	Most Limited (A,Q,S)
245C Woodbridge	Least Limited	Most Limited (W,S,R,P)	Most Limited (S,A)	Most Limited (S)
Urban Land	Most Limited (D)	Most Limited (S,P)	Most Limited (S,A,Q)	Most Limited (S,A,Q)
248B Georgia	Least Limited	Most Limited (W,P,S)	Somewhat Limited (A,S)	Somewhat Limited (S)
Urban Land	Most Limited (D)	Most Limited (P,S)	Most Limited (A,Q,S)	Most Limited (A,Q,S)
250B Sutton	Least Limited	Most Limited (W,P,S)	Most Limited (A,Q,S)	Most Limited (Q,S)
Urban Land	Most Limited (D)	Most Limited (P,S)	Most Limited (A,Q,S)	Most Limited (A,Q,S)
253B Wapping	Least Limited	Most Limited (W,S)	Most Limited (A,Q,S)	Most Limited (Q,S)
Urban Land	Most Limited (D)	Most Limited (P,S)	Most Limited (A,Q,S)	Most Limited (A,Q,S)
255B Watchaug	Least Limited	Somewhat Limited (W,P,S)	Most Limited (A,Q,S)	Most Limited (Q,S)
Urban Land	Most Limited (D)	Most Limited (P,S)	Most Limited (A,Q,S)	Most Limited (A,Q,S)
260B Charlton	Least Limited	Somewhat Limited (S,P)	Most Limited (A,Q,S)	Most Limited (Q,S)
Urban Land	Most Limited (D)	Most Limited (P,S)	Most Limited (A,Q,S)	Most Limited (A,Q,S)
260C Charlton	Least Limited	Most Limited (S,P)	Most Limited (A,S,Q)	Most Limited (S,Q)
Urban Land	Most Limited (D)	Most Limited (S,P)	Most Limited (S,A,Q)	Most Limited (S,A,Q)
260D Charlton	Somewhat Limited (S)	Most Limited (S,P)	Most Limited (A,S,Q)	Most Limited (S,Q)
Urban Land	Most Limited (D,S)	Most Limited (S,P)	Most Limited (S,A,Q)	Most Limited (S,A,Q)
263B Cheshire	Least Limited	Somewhat Limited (S,P)	Most Limited (A,Q,S)	Most Limited (Q,S)
Urban Land	Most Limited (D)	Most Limited (P,S)	Most Limited (A,Q,S)	Most Limited (A,Q,S)
263C Cheshire	Least Limited	Most Limited (S,P)	Most Limited (A,S,Q)	Most Limited (S,Q)
Urban Land	Most Limited (D)	Most Limited (S,P)	Most Limited (S,A,Q)	Most Limited (S,A,Q)
266BNarraganset	Least Limited	Somewhat Limited (S)	Most Limited (A,Q,S)	Most Limited (Q,S)
Urban Land	Most Limited (D)	Most Limited (P,S)	Most Limited (A,Q,S)	Most Limited (A,Q,S)
269B Yalesville	Somewhat Limited (B)	Most Limited (R,S,P)	Most Limited (Q,S,A)	Most Limited (Q,S)
Urban Land	Most Limited (D)	Most Limited (P,S)	Most Limited (A,Q,S)	Most Limited (A,Q,S)
269C Yalesville	Somewhat Limited (B)	Most Limited (S,R,P)	Most Limited (S,Q,A)	Most Limited (S,Q)
Urban Land	Most Limited (D)	Most Limited (S,P)	Most Limited (S,A,Q)	Most Limited (S,A,Q)
273C: UrbanLand	Most Limited (D)	Most Limited (S,P)	Most Limited (S,A,Q)	Most Limited (S,A,Q)
Charlton	Least Limited	Most Limited (S,P)	Most Limited (A,S,Q)	Most Limited (S,Q)
Chatfield-	Most Limited (B)	Most Limited (S,R,P)	Most Limited (S,Q,A)	Most Limited (S,Q)
273E Urban Land	Most Limited (D,S)	Most Limited (S,P)	Most Limited (S,A,Q)	Most Limited (S,A,Q)
Charlton	Most Limited (S)	Most Limited (S,P)	Most Limited (A,S,Q)	Most Limited (S,Q)
Chatfield-	Most Limited (B,S)	Most Limited (S,R,P)	Most Limited (S,Q,A)	Most Limited (S,Q)
275C: UrbanLand	Most Limited (D)	Most Limited (S,P)	Most Limited (S,A,Q)	Most Limited (S,A,Q)
Chatfield-	Most Limited (B)	Most Limited (S,R,P)	Most Limited (S,Q,A)	Most Limited (S,Q)

<b>Map Symbol and Soil Name</b>	<b>Retention/Detention Basin</b> <i>(Single home rain garden)</i>	<b>Infiltration Systems</b> <i>(Commercial rain garden/ bioretention system)</i>	<b>Perennial Wetland Systems</b>	<b>Intermittent Wetland Systems</b>
275E: UrbanLand	Most Limited (D,S)	Most Limited (S,P)	Most Limited (S,A,Q)	Most Limited (S,A,Q)
Chatfield-	Most Limited (B,S)	Most Limited (S,R,P)	Most Limited (S,Q,A)	Most Limited (S,Q)
Rock Outcrop	Most Limited (D,B,S)	Most Limited (R,S,P)	Most Limited (S,Q)	Most Limited (S,Q)
282B:Broadbrook	Least Limited	Most Limited (W,R,P,S)	Most Limited (Q,S,A)	Most Limited (Q,S)
Urban Land	Most Limited (D)	Most Limited (P,S)	Most Limited (A,Q,S)	Most Limited (A,Q,S)
284B: Paxton	Least Limited	Most Limited (W,R,P,S)	Most Limited (Q,S,A)	Most Limited (Q,S)
Urban Land	Most Limited (D)	Most Limited (P,S)	Most Limited (A,Q,S)	Most Limited (A,Q,S)
284C: Paxton	Least Limited	Most Limited (W,S,R,P)	Most Limited (S,Q,A)	Most Limited (S,Q)
Urban Land	Most Limited (D)	Most Limited (S,P)	Most Limited (S,A,Q)	Most Limited (S,A,Q)
284D: Paxton	Somewhat Limited (S)	Most Limited (W,S,R,P)	Most Limited (S,Q,A)	Most Limited (S,Q)
Urban Land	Most Limited (D)	Most Limited (S,P)	Most Limited (S,A,Q)	Most Limited (S,A,Q)
287B Wethersfield	Least Limited	Most Limited (W,R,P,S)	Most Limited (Q,S,A)	Most Limited (Q,S)
Urban Land	Most Limited (D)	Most Limited (P,S)	Most Limited (A,Q,S)	Most Limited (A,Q,S)
287C Wethersfield	Least Limited	Most Limited (W,S,R,P)	Most Limited (S,Q,A)	Most Limited (S,Q)
Urban Land	Most Limited (D)	Most Limited (S,P)	Most Limited (S,A,Q)	Most Limited (S,A,Q)
287D Wethersfield	Somewhat Limited (S)	Most Limited (W,S,R,P)	Most Limited (S,Q,A)	Most Limited (S,Q)
Urban Land	Most Limited (D,S)	Most Limited (S,P)	Most Limited (S,A,Q)	Most Limited (S,A,Q)
290B Stockbridge	Least Limited	Most Limited (P,R,S)	Most Limited (Q,A,S)	Most Limited (Q,S)
Urban Land	Most Limited (D)	Most Limited (P,S)	Most Limited (A,Q,S)	Most Limited (A,Q,S)
290C Stockbridge	Least Limited	Most Limited (S,P,R)	Most Limited (S,Q,A)	Most Limited (S,Q)
Urban Land	Most Limited (D)	Most Limited (S,P)	Most Limited (S,A,Q)	Most Limited (S,A,Q)
290DStockbridge	Somewhat Limited (S)	Most Limited (S,P,R)	Most Limited (S,Q,A)	Most Limited (S,Q)
Urban Land	Most Limited (D)	Most Limited (S,P)	Most Limited (S,A,Q)	Most Limited (S,A,Q)
301: Beaches	Most Limited (F,D)	Most Limited (W,F,S)	Somewhat Limited (A,S)	Somewhat Limited (A,S)
Udipsammments	Most Limited (F)	Most Limited (F,S,W)	Most Limited (A,S,Q)	Most Limited (A,S,Q)
302: Dumps	Most Limited (D)	Most Limited (S,P)	Most Limited (S,A,Q)	Most Limited (S,A,Q)
303:Pits,Quarries	Most Limited (D,B,S)	Most Limited (R,P,S)	Most Limited (S,Q)	Most Limited (S,Q)
304: Udorthents	Most Limited (S)	Most Limited (S,W,P)	Most Limited (S,Q,A)	Most Limited (S,Q)
305: Udorthents	Most Limited (D,S)	Most Limited (S,W,P)	Most Limited (S,Q)	Most Limited (S,Q)
Pits-	Most Limited (D,S)	Most Limited (S)	Most Limited (A,S,Q)	Most Limited (S,Q,A)
306: Udorthents	Somewhat Limited (S)	Most Limited (S,W,P)	Most Limited (S,Q,A)	Most Limited (S,Q)
Urban Land	Most Limited (D)	Most Limited (S,P)	Most Limited (S,Q,A)	Most Limited (S,Q,A)
307: Urban Land	Most Limited (D,S)	Most Limited (P,S)	Most Limited (S,A,Q)	Most Limited (S,A,Q)
308: Udorthents	Somewhat Limited (S)	Most Limited (S,W,P)	Most Limited (S,Q,A)	Most Limited (S,Q)
309: Udorthents	Most Limited (F,D)	Most Limited (S,W,P,F)	Most Limited (S,Q)	Most Limited (S,Q)
310: Udorthents	Most Limited(F,D,S)	Most Limited (F,S,W,P)	Most Limited (S,Q)	Most Limited (S,Q)
401C Macomber	Most Limited (B)	Most Limited (S,R,P)	Most Limited (S,Q,A)	Most Limited (S,Q)
Taconic	Most Limited (D,B)	Most Limited (R,S,P)	Most Limited (S,Q)	Most Limited (S,Q)
402D Macomber	Most Limited (B,S)	Most Limited (S,R,P)	Most Limited (S,Q,A)	Most Limited (S,Q)
Taconic	Most Limited (D,B,S)	Most Limited (R,S,P)	Most Limited (S,Q)	Most Limited (S,Q)
RockOutcrop	Most Limited (D,B,S)	Most Limited (R,S,P)	Most Limited (S,Q)	Most Limited (S,Q)
403C Taconic	Most Limited (D,B)	Most Limited (R,S,P)	Most Limited (S,Q)	Most Limited (S,Q)
RockOutcrop	Most Limited (D,B)	Most Limited (R,S,P)	Most Limited (S,Q)	Most Limited (S,Q)
403E: Taconic	Most Limited (D,B,S)	Most Limited (R,S,P)	Most Limited (S,Q)	Most Limited (S,Q)
RockOutcrop	Most Limited (D,B,S)	Most Limited (R,S,P)	Most Limited (S,Q)	Most Limited (S,Q)
403F: Taconic-	Most Limited (S,D,B)	Most Limited (R,S,P)	Most Limited (S,Q)	Most Limited (S,Q)
RockOutcrop	Most Limited (S,D,B)	Most Limited (R,S,P)	Most Limited (S,Q)	Most Limited (S,Q)
405C:Dummerston	Least Limited	Most Limited (S,P)	Most Limited (A,S,Q)	Most Limited (S,Q)
405E:Dummerston	Somewhat Limited (S)	Most Limited (S,P)	Most Limited (A,S,Q)	Most Limited (S,Q)
407C: Lanesboro	Least Limited	Most Limited (W,R,S,P)	Most Limited (S,Q,A)	Most Limited (S,Q)
407E: Lanesboro	Most Limited (S)	Most Limited (W,R,S,P)	Most Limited (S,Q,A)	Most Limited (S,Q)
408C: Fullam	Least Limited	Most Limited (W,R,S,P)	Most Limited (S,Q,A)	Most Limited (S,Q)
409B: Brayton	Most Limited (D)	Most Limited (W,R,S,P)	Somewhat Limited (S)	Somewhat Limited (S)
412B: Bice-----	Least Limited	Somewhat Limited (S,P)	Most Limited (A,Q,S)	Most Limited (Q,S)
412C: Bice----	Least Limited	Most Limited (S,P)	Most Limited (A,S,Q)	Most Limited (S,Q)
412D: Bice	Somewhat Limited (S)	Most Limited (S,P)	Most Limited (A,S,Q)	Most Limited (S,Q)

<b>Map Symbol and Soil Name</b>	<b>Retention/Detention Basin</b> <i>(Single home rain garden)</i>	<b>Infiltration Systems</b> <i>(Commercial rain garden/ bioretention system)</i>	<b>Perennial Wetland Systems</b>	<b>Intermittent Wetland Systems</b>
413C: Bice----- Millsite	Least Limited Most Limited (B)	Most Limited (S,P) Most Limited (S,R,P)	Most Limited (A,S,Q) Most Limited (S,Q,A)	Most Limited (S,Q) Most Limited (S,Q)
413E: Bice---- Millsite-----	Somewhat Limited (S) Most Limited (B,S)	Most Limited (S,P) Most Limited (S,R,P)	Most Limited (A,S,Q) Most Limited (S,Q,A)	Most Limited (S,Q) Most Limited (S,Q)
414: Fredon, cold	Most Limited (D)	Most Limited (W)	Somewhat Limited (A)	Least Limited
415C Millsite----- Westminster Rock Outcrop	Most Limited (B) Most Limited (D,B) Most Limited (D,B)	Most Limited (S,R,P) Most Limited (R,S,P) Most Limited (R,S,P)	Most Limited (S,Q,A) Most Limited (S,Q) Most Limited (S,Q)	Most Limited (S,Q) Most Limited (S,Q) Most Limited (S,Q)
415E Millsite----- Westminster Rock Outcrop	Most Limited (S,B) Most Limited (D,B,S) Most Limited (D,B,S)	Most Limited (S,R,P) Most Limited (R,S,P) Most Limited (R,S,P)	Most Limited (S,Q,A) Most Limited (S,Q) Most Limited (S,Q)	Most Limited (S,Q) Most Limited (S,Q) Most Limited (S,Q)
416E:RockOutcrop Westminster	Most Limited (D,B,S) Most Limited (D,B,S)	Most Limited (R,S,P) Most Limited (R,S,P)	Most Limited (S,Q) Most Limited (S,Q)	Most Limited (S,Q) Most Limited (S,Q)
416F:RockOutcrop Westminster	Most Limited (S,D,B) Most Limited (S,D,B)	Most Limited (R,S,P) Most Limited (R,S)	Most Limited (S,Q) Most Limited (S,Q)	Most Limited (S,Q) Most Limited (S,Q)
417B: Bice-----	Least Limited	Somewhat Limited (S,P)	Most Limited (A,Q,S)	Most Limited (Q,S)
417C: Bice----	Least Limited	Most Limited (S,P)	Most Limited (A,S,Q)	Most Limited (S,Q)
417D: Bice	Somewhat Limited (S)	Most Limited (S,P)	Most Limited (A,S,Q)	Most Limited (S,Q)
418C: Schroon	Least Limited	Most Limited (W,S,P)	Most Limited (A,S,Q)	Most Limited (S,Q)
420A: Schroon	Least Limited	Most Limited (W,P)	Most Limited (A,Q)	Most Limited (Q,A)
420B: Schroon	Least Limited	Most Limited (W,S,P)	Most Limited (A,Q,S)	Most Limited (Q,S,A)
421ANinigret, cold	Least Limited	Most Limited (W)	Somewhat Limited (A)	Least Limited
423ASudbury,cold	Least Limited	Most Limited (W)	Most Limited (A,Q)	Most Limited (Q,A)
424B: Shelburne	Least Limited	Most Limited (W,R,S,P)	Most Limited (Q,S,A)	Most Limited (Q,S)
424C: Shelburne	Least Limited	Most Limited (W,R,S,P)	Most Limited (S,Q,A)	Most Limited (S,Q)
424D: Shelburne	Somewhat Limited (S)	Most Limited (W,R,S,P)	Most Limited (S,Q,A)	Most Limited (S,Q)
425B: Shelburne	Least Limited	Most Limited (W,R,S,P)	Most Limited (Q,S,A)	Most Limited (Q,S)
425C: Shelburne	Least Limited	Most Limited (W,R,S,P)	Most Limited (S,Q,A)	Most Limited (S,Q)
426D: Shelburne	Somewhat Limited (S)	Most Limited (W,R,S,P)	Most Limited (S,Q,A)	Most Limited (S,Q)
427B Ashfield	Least Limited	Most Limited (W,R,S,P)	Somewhat Limited (S,A)	Somewhat Limited (S)
427C Ashfield	Least Limited	Most Limited (W,R,S,P)	Most Limited (S,A)	Most Limited (S)
428A Ashfield	Least Limited	Most Limited (W,R,P)	Somewhat Limited (A)	Least Limited
428B Ashfield	Least Limited	Most Limited (W,R,S,P)	Somewhat Limited (S,A)	Somewhat Limited (S)
428C Ashfield	Least Limited	Most Limited (W,R,S,P)	Most Limited (S,A)	Most Limited (S)
429AAgawam cold	Least Limited	Least Limited	Most Limited (A,Q)	Most Limited (A,Q)
429BAGawam cold	Least Limited	Somewhat Limited (S)	Most Limited (A,Q,S)	Most Limited (A,Q,S)
429CAGawam cold	Least Limited	Most Limited (S)	Most Limited (A,S,Q)	Most Limited (S,A,Q)
433 Moosilauke	Most Limited (D)	Most Limited (W)	Somewhat Limited (A)	Least Limited
434AMerrimac, cold	Least Limited	Least Limited	Most Limited (A,Q)	Most Limited (Q,A)
434BMerrimac, cold	Least Limited	Somewhat Limited (S)	Most Limited (A,Q,S)	Most Limited (Q,S,A)
434CMerrimac,cold	Least Limited	Most Limited (S)	Most Limited (A,S,Q)	Most Limited (Q,S,A)
435 Scarboro	Most Limited (D)	Most Limited (W)	Somewhat Limited (A)	Least Limited
436 Halsey	Most Limited (D)	Most Limited (W)	Somewhat Limited (A)	Least Limited
437: Wonsqueak	Most Limited (F,D)	Most Limited (W,P,F)	Least Limited	Least Limited
438: Bucksport	Most Limited (F,D)	Most Limited (W,F,P)	Least Limited	Least Limited
440A Boscawen	Least Limited	Least Limited	Most Limited (A,Q)	Most Limited (A,Q)
440C Boscawen	Least Limited	Most Limited (S)	Most Limited (A,S,Q)	Most Limited (A,S,Q)
440E Boscawen	Most Limited (S)	Most Limited (S)	Most Limited (A,S,Q)	Most Limited (A,S,Q)
442 Brayton	Most Limited (D)	Most Limited (W,R,P,S)	Somewhat Limited (S)	Somewhat Limited (S)
443 Brayton	Most Limited (D)	Most Limited (W,R,P,S)	Somewhat Limited (S)	Somewhat Limited (S)
Loonmeadow	Most Limited (D)	Most Limited (W,R,P)	Least Limited	Least Limited

<b>Map Symbol and Soil Name</b>	<b>Retention/Detention Basin</b> <i>(Single home rain garden)</i>	<b>Infiltration Systems</b> <i>(Commercial rain garden/ bioretention system)</i>	<b>Perennial Wetland Systems</b>	<b>Intermittent Wetland Systems</b>
448B Hogansburg	Least Limited	Most Limited (W,P,S)	Somewhat Limited (A,S,Q)	Somewhat Limited (S,Q)
448C Hogansburg	Least Limited	Most Limited (W,S,P)	Most Limited (S,A,Q)	Most Limited (S,Q)
449B Hogansburg	Least Limited	Most Limited (W,P,S)	Somewhat Limited (A,S,Q)	Somewhat Limited (S,Q)
449C Hogansburg	Least Limited	Most Limited (W,S,P)	Most Limited (S,A,Q)	Most Limited (S,Q)
450B Pyrities	Least Limited	Most Limited (P,R,S)	Most Limited (Q,A,S)	Most Limited (Q,S)
450C Pyrities	Least Limited	Most Limited (S,P,R)	Most Limited (S,Q,A)	Most Limited (S,Q)
450D Pyrities	Somewhat Limited (S)	Most Limited (S,P,R)	Most Limited (S,Q,A)	Most Limited (S,Q)
451B Pyrities	Least Limited	Most Limited (P,R,S)	Most Limited (Q,A,S)	Most Limited (Q,S)
451C Pyrities	Least Limited	Most Limited (S,P,R)	Most Limited (S,Q,A)	Most Limited (S,Q)
451D Pyrities	Somewhat Limited (S)	Most Limited (S,P,R)	Most Limited (S,Q,A)	Most Limited (S,Q)
457 Mudgepond	Most Limited (D)	Most Limited (W,P)	Somewhat Limited (A)	Least Limited
458 Mudgepond	Most Limited (D)	Most Limited (W,P)	Somewhat Limited (A)	Least Limited
Alden	Most Limited (D)	Most Limited (W,P)	Least Limited	Least Limited
501 Ondawa	Most Limited (F)	Most Limited (F,P,R,W)	Most Limited (Q,A)	Most Limited (Q)
503 Rumney	Most Limited (F,D)	Most Limited (W,F)	Somewhat Limited (A)	Least Limited
508 Medomak	Most Limited (F,D)	Most Limited (W,F)	Somewhat Limited (A)	Least Limited



## **Appendix E: Contacts:**

Lisa Krall, Soil Interpretation Specialist  
344 Merrow Road, Suite A  
Tolland, CT 06084  
(860) 871-4051  
[lisa.krall@ct.usda.gov](mailto:lisa.krall@ct.usda.gov)

Shawn McVey, Assistant State Soil Scientist, CT-NRCS  
344 Merrow Road, Suite A  
Tolland, CT 06084-3917  
(860) 871-4044  
[shawn.mcvey@ct.usda.gov](mailto:shawn.mcvey@ct.usda.gov)

Kipen Kolesinskas, State Soil Scientist  
344 Merrow Road, Suite A  
Tolland, CT 06084-3917  
(860) 871-4047  
[kip.kolesinskas@ct.usda.gov](mailto:kip.kolesinskas@ct.usda.gov)