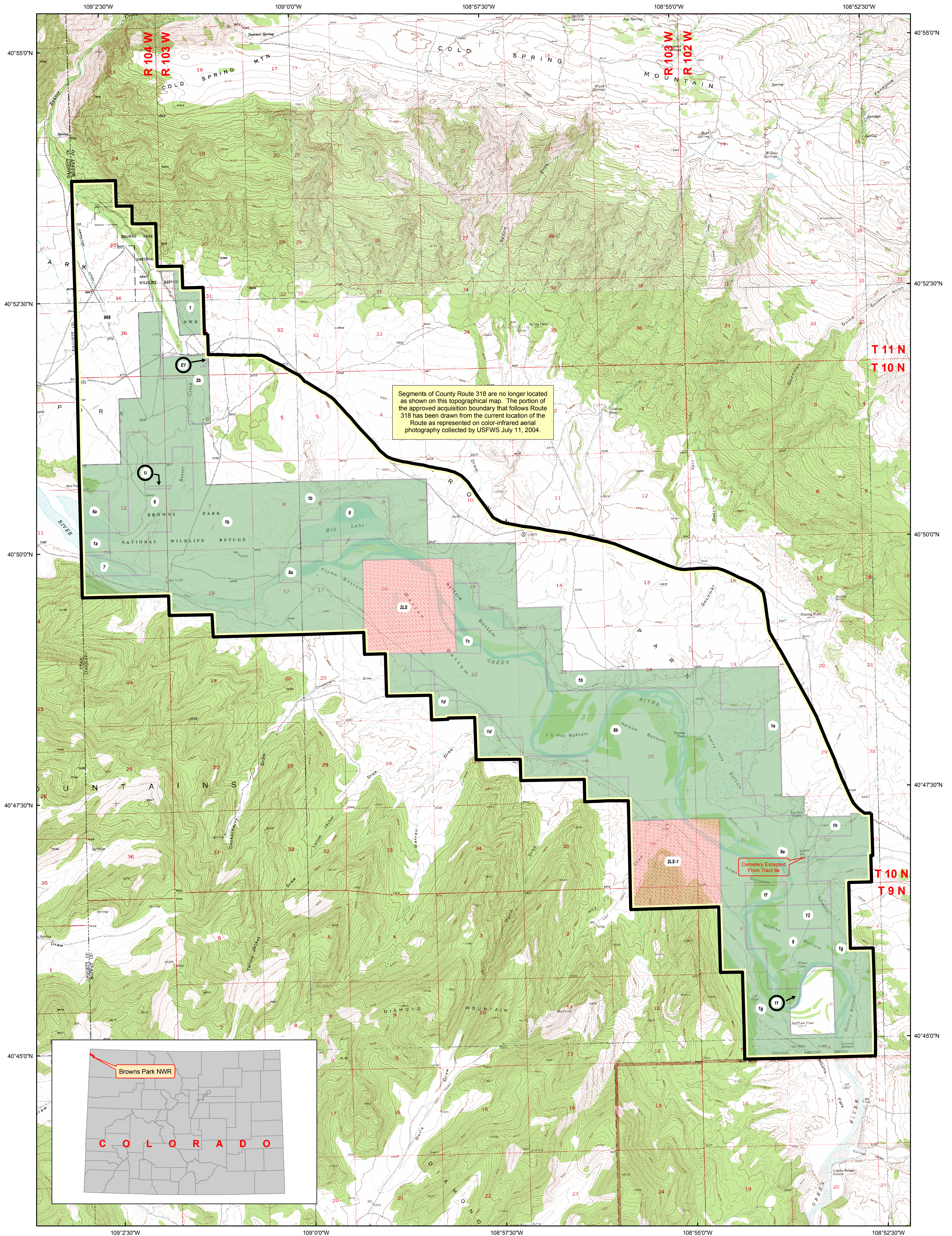


U.S. Fish & Wildlife Service

Browns Park National Wildlife Refuge

Moffat County, Colorado

Land Status



PRODUCED IN THE DIVISION OF REALTY
 LAKEWOOD, CO
 MAP CURRENT TO: Status
 Atlas (series of 4 maps) on 1/25/05
 BASE MAP SOURCE: USGS 7.5' DRG
 SIXTH Principal Meridian
 UTM NAD27 Zone 12
 MAP PRODUCED 12/19/05
 MAP NAME: brpbnd_utm27.mxd

