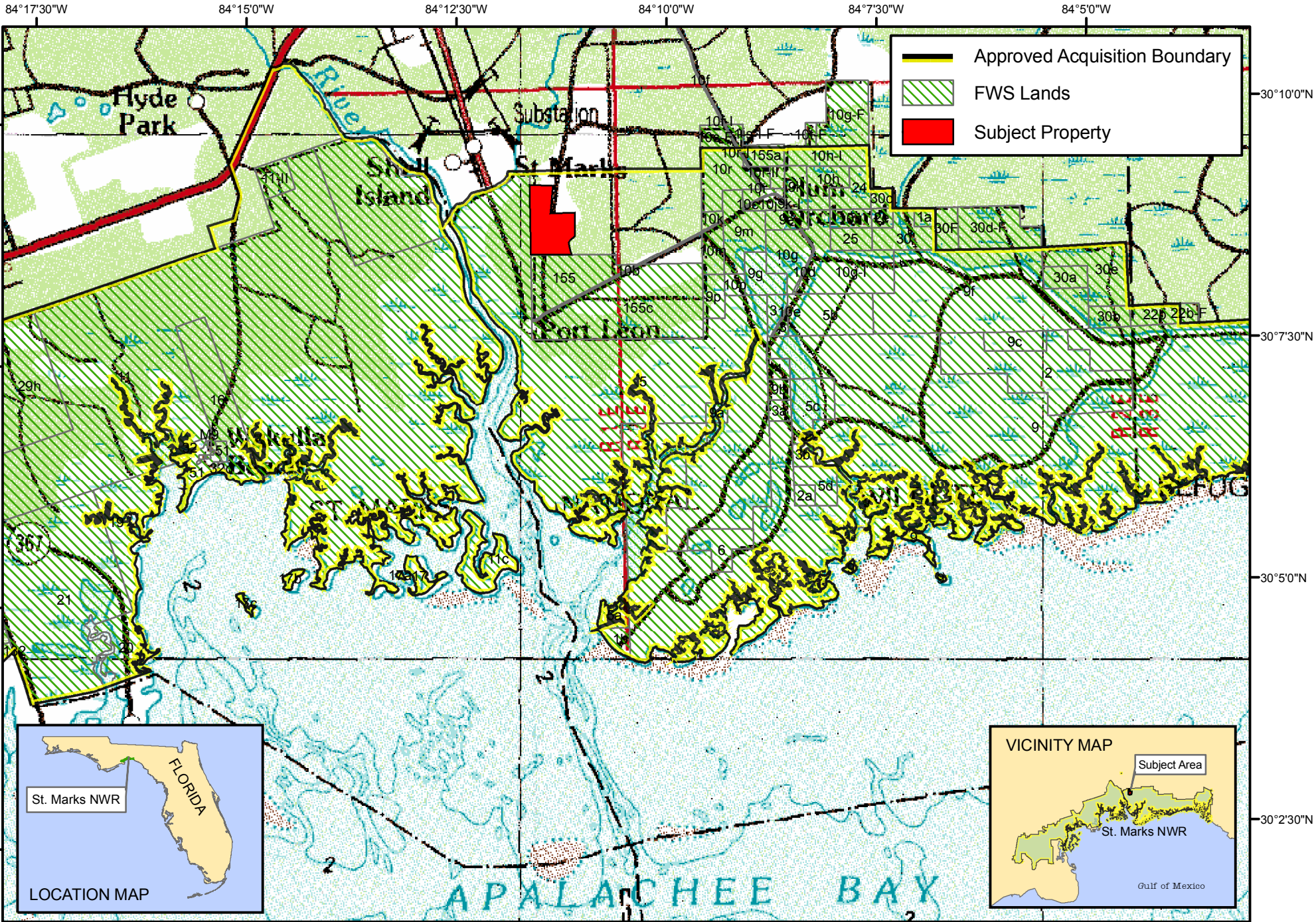


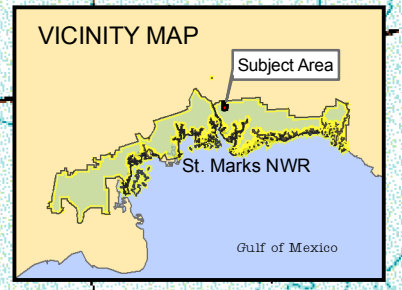


**U.S. Fish & Wildlife Service**  
**St. Marks National Wildlife Refuge**  
 Jefferson, Taylor and Wakulla Counties, Florida

Emergency Funding Request



- Approved Acquisition Boundary
- FWS Lands
- Subject Property



Produced in the Division of Realty  
 Atlanta, GA  
 Land Status Current to: 4/22/2005  
 Base Map Source: USGS DRG 1999

