



U.S. Fish & Wildlife Service

Mingo Job Corps Center Land Transfer

# Mingo National Wildlife Refuge

Stoddard & Wayne Counties, Missouri

R 7 E R 8 E

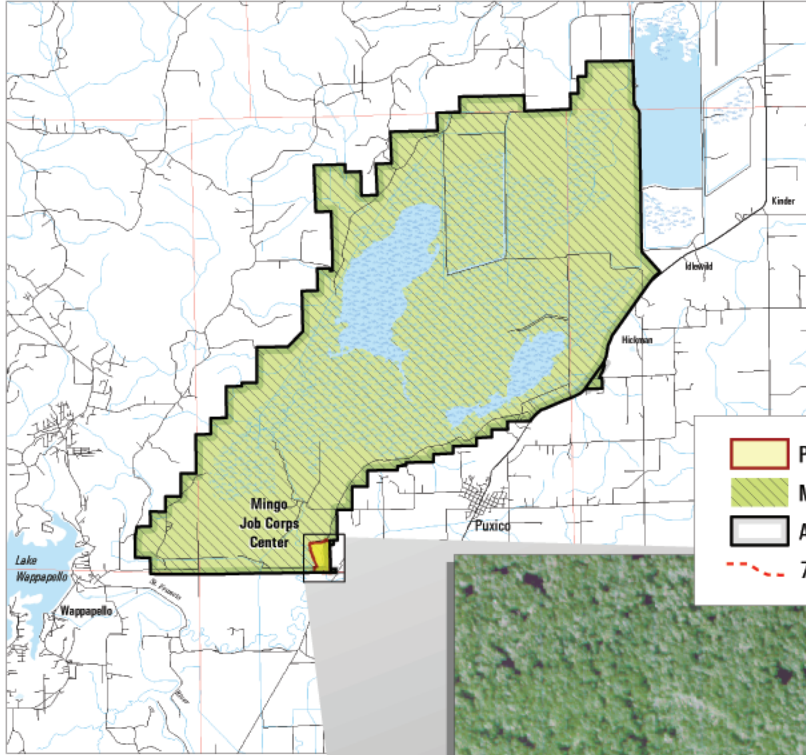
**OFFICIAL MAP**  
AS CITED IN  
PUBLIC LAW 108-341  
SECTION: 2(b)  
DATED: October 18, 2004  
STAT. NO.: 118 STAT. 1365

T 28 N

T 27 N

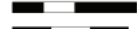
T 27 N

T 26 N



R 7 E R 8 E

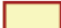



0 1 2 Miles



0 1 2 3 Kilometers



Region 3 Locator

-  Property to be Transferred to USDA Forest Service
-  Mingo NWR Refuge Ownership
-  Approved Acquisition Boundary
-  70' wide easement



T 27 N

T 26 N

R 8 E

0 500 Feet



0 100 Meters



Produced in the Division of Realty  
Fort Snelling, MN  
Land Status Current to: 3/10/04  
Base Map: USGS DLG NED 2003 CIR Aerial Photo