

FY 2016 Annual Report

*Migratory Bird
Conservation Commission*





On the Cover: *Pair of trumpeter swans.*

*Painting by Joseph Hautman for the
2016–2017 Federal Duck Stamp.*

Illustrations: Bob Hines

*Photographs courtesy of the U.S. Fish
& Wildlife Service's National Digital
Library: ([http://digitalmedia.fws.gov/
cdm/landingpage/collection/natdiglib](http://digitalmedia.fws.gov/cdm/landingpage/collection/natdiglib))*

Table of Contents

The Service’s Legacy of Conserving Migratory Waterfowl Habitat	2
The Migratory Bird Conservation Commission	3
The Migratory Bird Conservation Fund	4
MBCF Collections and Obligations for Fiscal Year 2016	5
MBCF Land Acquisitions for Fiscal Year 2016	6
Migratory Bird Conservation Act: MBCC Approvals for FY 2016	8
Migratory Bird Conservation Act: New Area Boundary and Boundary Addition Approvals for FY 2016	9
New Area Boundary Approval and Map	10
Boundary Approval and Map	12
Status of Wetlands Conservation Projects for Migratory Bird Conservation 14	
Migratory Bird Refuges Map	15
Table 1. Migratory Bird Refuges	16
Wetland Management Districts Map	25
Table 2. Waterfowl Production Areas	26
The National Wildlife Refuge System: Public Hunting and Fishing	32
Lands Opened and Expanded for Public Hunting and Fishing for Fiscal Year 2016 ..	33
Table 3. National Wildlife Refuge Hunting Openings and Expansions	34
Table 4. Waterfowl Production Area Hunting Expansions	35
Lands Closed for Public Hunting and Fishing for Fiscal Year 2016	36
Status of Public Hunting and Fishing on Lands Acquired in Fiscal Year 2016	37
North American Wetlands Conservation Act: Summary of MBCC Approvals for FY 2016	38
Table 5. U.S. Wetlands Conservation Standard Grants	39
Table 6. U.S. Wetlands Conservation Small Grants	40
Table 7. Canadian Wetlands Conservation Standard Grants	42
Table 8. Mexican Wetlands Conservation Standard Grants	43
Membership of the Migratory Bird Conservation Commission	44

The Service's Legacy of Conserving Migratory Waterfowl Habitat

For more than 80 years, the Migratory Bird Conservation Program and the Federal Duck Stamp Program have helped secure key habitats to sustain migratory bird populations. These programs protect wetlands, which help dissipate storm water runoff, purify water supplies, and store flood water. As we look forward to the continuing conservation of these critical resources, we find inspiration in these programs' extraordinary history of success.

At the turn of the 20th century, overeager hunters and the commercial demand for meat and feathers had decimated waterfowl populations. At the same time, periodic droughts caused wetlands and other valuable waterfowl habitat to disappear. In the late 1920s, conservationists, hunters, and government officials worked together to create the Migratory Bird Conservation Act, which Congress passed in 1929. This landmark legislation authorized the Federal government to acquire and permanently protect wetlands for waterfowl. It also created the Migratory Bird Conservation Commission—composed of Federal and State officials—to consider and approve proposals for land acquisition to conserve migratory waterfowl habitat.

Although the Act gave the Federal Government authority to create migratory bird refuges, it did not provide a permanent source of acquisition funding. This problem was addressed in the 1930s when President Franklin D. Roosevelt appointed Jay N. "Ding" Darling, a nationally known wildlife conservationist and political cartoonist, to serve as the Chief of the Bureau of Biological Survey. Darling was instrumental in the creation of a stamp, to be purchased by all waterfowl hunters, that would generate funds to pay for the acquisition of waterfowl habitat. In 1934, Congress passed the Migratory Bird Hunting and Conservation Stamp Act, which requires all hunters older than 16 to purchase and possess a Federal Duck Stamp while hunting waterfowl.

Revenues from Duck Stamp sales are deposited into the Migratory Bird Conservation Fund. The Fund also

includes import duties collected on arms and ammunition, and any appropriations from the Wetlands Loan Act, which Congress authorized in 1961 as an advance of funds against future revenues from the sale of Duck Stamps. The Fund is further supplemented by the proceeds from the sale of products and from rights-of-way granted across national wildlife refuges, disposals of refuge land, and reverted Federal Aid funds.

Since 1934, the Service has spent more than 1.4 billion Migratory Bird Conservation Fund dollars to permanently protect more than 5.7 million acres of important waterfowl habitat, including more than 3.2 million acres of Waterfowl Production Areas (WPAs) in the U.S. Prairie Pothole Region. In 2016 alone, the Service used more than \$59 million from the Migratory Bird Conservation Fund to protect more than 6,000 acres of waterfowl habitat at migratory bird refuges and nearly 47,000 acres in the Prairie Pothole Region, by fee or easement purchase.

Today, as in the past, the Migratory Bird Conservation Program and the Federal Duck Stamp Program depend on the support of people who understand and connect with our natural world—people who understand the importance of our wildlife resources and take action. What can you do? Buy a Federal Duck Stamp. Tell people how important Federal Duck Stamps are to ensuring healthy populations of all migratory birds and other wildlife. For more information, visit our Federal Duck Stamp Web site <www.fws.gov/duckstamps/> or our Division of Realty Web site <www.fws.gov/refuges/realty/>.

The Migratory Bird Conservation Commission

Section 2 of the Migratory Bird Conservation Act of 1929 established the Migratory Bird Conservation Commission. It reads as follows:

Section 2, as amended. A commission to be known as the Migratory Bird Conservation Commission, consisting of the Secretary of the Interior, as chairman, the Administrator of the Environmental Protection Agency, the Secretary of Agriculture, and two Members of the Senate, to be selected by the President of the Senate, and two Members of the House of Representatives to be selected by the Speaker, is created and authorized to consider and pass upon any area of land, water, or land and water that may be recommended by the Secretary of the Interior for purchase or rental under this subchapter, and to fix the price or prices at which such area may be purchased or rented; and no purchase or rental shall be made of any such area until it has been duly approved for purchase or rental by said commission. Any Member of the House of Representatives who is a member of the commission, if reelected to the succeeding Congress, may serve on the commission notwithstanding the expiration of a Congress. Any vacancy on the commission shall be filled in the same manner as the original appointment. The ranking officer of the branch or department of a State to which is

committed the administration of its game laws, or his authorized representative, and in a State having no such branch or department, the governor thereof, or his authorized representative, shall be a member ex officio of said commission for the purpose of considering and voting on all questions relating to the acquisition, under this subchapter, of areas in his State. For purposes of this subchapter, the purchase or rental of any area of land, water, or land and water includes the purchase or rental of any interest in any such area of land, water, or land and water.

Additional Responsibility: In 1989, the Commission acquired the additional responsibility of approving project funding under the North American Wetlands Conservation Act. This Act provides Federal funding to encourage partnerships to protect, enhance, restore, and manage wetlands and other habitats for migratory birds and other fish and wildlife. The North American Wetlands Conservation Council, which was created by the legislation, submits project recommendations to the Commission for funding approval.

2016 Membership

Hon. Sally Jewell
Secretary of the Interior, Chair

Hon. Tom Vilsack
Secretary of Agriculture

Hon. Gina McCarthy
Administrator, Environmental Protection Agency

Hon. Thad Cochran
Senator from Mississippi

Hon. Martin Heinrich
Senator from New Mexico

Hon. Robert J. Wittman
Representative from Virginia

Hon. Mike Thompson
Representative from California

A. Eric Alvarez
Secretary to the Commission
Telephone: 703/358-1716

The Migratory Bird Conservation Fund

The Migratory Bird Hunting and Conservation Stamp Act of March 18, 1934 (Duck Stamp Act), created the Migratory Bird Conservation Fund (MBCF) to provide the Department of the Interior with monies to acquire migratory bird habitat.

There are three major sources of funds deposited into the MBCF account. The most well-known source is the revenue received from the sale of Migratory Bird Hunting and Conservation Stamps, commonly known as Duck Stamps, as provided for under the Duck Stamp Act. The other two major sources include appropriations authorized by the Wetlands Loan Act of October 4, 1961, as amended, and import duties collected on arms and ammunition, as provided for under the Emergency Wetlands Resources Act of 1986. The MBCF is further supplemented by the proceeds from the sale of products and from rights-of-way granted across national wildlife refuges, disposals of refuge land, and reverted Federal Aid funds.

The MBCF finances two Fish and Wildlife Service land acquisition programs that are administered by the Division of Realty. The first program acquires waterfowl habitat in major migratory bird conservation areas under the authority of the Migratory Bird Conservation Act of 1929 (MBCA). The second program acquires small natural wetlands, grasslands, and interests in wetlands and grasslands, known as Waterfowl Production Areas (WPAs), under the authority of the Duck Stamp Act. WPAs are located primarily in the Prairie Pothole Region of the upper Midwest region of the United States.

In accordance with the Federal Duck Stamp Act of 2014 (Pub. L. 113-264),

which amended the Duck Stamp Act, all amounts in excess of \$15 received from the sale of each Duck Stamp are deposited into a MBCF sub-account that can only be used for conservation easement acquisition. This Act also established reporting requirements for MBCF expenditures, and requires the Service to identify areas open and closed to hunting and fishing.

Fiscal year 2016 collections totaled \$85,255,493, including \$9,221,997 from fiscal year 2015 carryover and \$4,535,605 in returned fiscal year 2015 sequestration funding. Of the total, \$76,728,766 was available for obligation during fiscal year 2016, including \$72,122,495 from MBCF collections and \$4,606,271 in reverted Federal Aid Wildlife Restoration grant money. The remaining funds, deposited at the end of the fiscal year, will carry over for use in fiscal year 2017, along with other unobligated funds.

Fiscal year 2016 obligations for MBCF land acquisition totaled \$76,024,887. Obligations included \$22,378,028 to acquire fee lands, leases, and easements for migratory bird refuges, and \$51,988,404 to acquire fee lands, leases and easements for WPAs. Printing expenses for the Federal Duck Stamp and other overhead costs make up the remaining \$1,658,455. The unobligated balance of \$9,230,606, along with \$4,785,365 in returned sequestered fiscal year 2016 funding, will be available for obligation during fiscal year 2017.

MBCF Collections and Obligations for Fiscal Year 2016

MBCF Collections for Fiscal Year 2016		
	<i>Funding Available For Obligation (as of 9/7/2016)</i>	<i>Total Funding (as of 9/30/2016)</i>
Carryover from FY 2015	\$9,221,997	\$9,221,997
Return of Sequestered FY 2015 Funds*	\$4,535,605	\$4,535,605
Federal Duck Stamps	\$29,739,902	\$29,739,902
Import Duties on Arms/Ammunition	\$27,683,463	\$27,683,463
Proceeds from Right-of-Way Permits	\$941,528	\$941,528
MBCF Collections (as of 9/7/2016)	\$72,122,495	\$72,122,495
Reverted Federal Aid Funds	\$4,606,271	\$4,606,271
Funding Available for Obligation	\$76,728,766	\$76,728,766
End of FY Deposit: Import Duties		\$11,988,625
End of FY Deposit: Federal Duck Stamps		\$23,297
End of FY Deposit: Right-of-Way Permits		\$170
End of FY Deposit: Prior FY Recoveries		\$1,300,000
Sequestered FY 2016 Funds*		(\$4,785,365)
Total Collections		\$85,255,493

MBCF Obligations for Fiscal Year 2016	
	<i>Funding Obligated</i>
<i>Land Acquisition Costs</i>	
Refuge Land Costs**	(\$17,433,949)
Refuge Easement Costs**	(\$976,000)
Refuge Acquisition Costs***	(\$3,968,079)
WPA Land Costs**	(\$1,203,669)
WPA Easement Costs**	(\$45,419,553)
WPA Acquisition Costs***	(\$5,365,182)
<i>Overhead Costs</i>	
MBCC Meeting Expenses	(\$929)
U.S. Postal Service Duck Stamp Costs	(\$570,817)
Enterprise Shared Costs	(\$1,086,710)
Total Obligations	(\$76,024,887)

MBCF Funding for Obligation in Fiscal Year 2017	
	<i>Funding for FY 2017</i>
FY 2016 Total Funding (Collections)	\$85,255,493
FY 2016 Total Obligations	(\$76,024,887)
Carryover into FY 2017	\$9,230,606
Return of Sequestered FY 2016 Funds*	\$4,785,365
Total Funding for Obligation in FY 2017	\$14,015,971

* Per the MBCA and section 251A of the Balanced Budget and Emergency Deficit Control Act, 2 U.S.C. 901a, a portion of the MBCF is sequestered each year and then returned the following year.

** Payments to landowners for a real property interest.

*** Includes incidental costs for contracted appraisals, surveys, title work, etc., and salaries for Realty personnel (Realty Specialists, Legal Instruments Examiners, etc.) working on MBCF land acquisitions.



MBCF Land Acquisitions for Fiscal Year 2016*Land Acquired by Purchase,
Permanent Easement, or Lease***Refuge Acquisition Program**

Fee Title Acquisitions			
<i>Area</i>	<i>State</i>	<i>Acres</i>	<i>Cost</i>
Billy Frank Jr. Nisqually NWR	Washington	186	\$787,187
Blackwater NWR	Maryland	497	\$1,948,000
Brazoria NWR	Texas	1,080	\$1,962,000
Cache River NWR	Arkansas	577	\$1,391,000
Cat Island NWR	Louisiana	383	\$728,600
Felsenthal NWR	Arkansas	1,303	\$1,876,160
Klamath Marsh NWR	Oregon	415	\$416,000
Laguna Atascosa NWR	Texas	395	\$1,000,000
Trinity River NWR	Texas	11	\$10,600
Upper Ouachita NWR	Louisiana	861	\$1,008,686
Total		5,708	\$11,128,233

Permanent Easement Acquisitions			
<i>Area</i>	<i>State</i>	<i>Acres</i>	<i>Cost</i>
Billy Frank Jr. Nisqually NWR	Washington	7	\$27,777
Willow Creek-Lurline WMA	California	114	\$398,600
Tulare Basin WMA	California	204	\$580,000
Total		325	\$1,006,377

Leases			
<i>Area</i>	<i>State</i>	<i>Acres</i>	<i>Cost</i>
Dahomey NWR	Mississippi	260	\$10,790
Lacassine NWR	Louisiana	640	\$25,600
Panther Swamp NWR	Mississippi	640	\$19,200
St. Catherine Creek NWR	Mississippi	502	\$19,600
Total		2,042	\$75,190

Refuge Acquisition Program Net Total		8,075	\$12,209,800
---	--	--------------	---------------------

Note: At Cache River NWR, the Service added an additional 48 acres through an equal value land-for-land exchange, by acquiring 247 acres and divesting 199 acres previously acquired with the MBCF. At Columbia NWR, through an equal value land-for-land exchange, the Service acquired 490 acres and divested 205 acres previously acquired with the MBCF, for a net addition of 285 acres.

MBCF Land Acquisitions for Fiscal Year 2016 (continued)

*Land Acquired by Purchase,
Permanent Easement, or Lease*

Small Wetlands Acquisition Program

Waterfowl Production Areas

Permanent Easement Acquisitions		
<i>State</i>	<i>Acres</i>	<i>Cost</i>
Minnesota	1,785	\$3,813,700
Montana	5,943	\$1,185,173
North Dakota	12,540	\$16,998,725
South Dakota	26,314	\$24,341,228
Total	46,581	\$46,338,826

Fee Title Acquisitions		
<i>State</i>	<i>Acres</i>	<i>Cost</i>
Minnesota	354	\$855,800
Total	354	\$855,800

Leases		
<i>State</i>	<i>Acres</i>	<i>Cost</i>
Montana	1,560	\$9,773
Total	1,560	\$9,773

Small Wetlands Acquisition Program Net Total	48,495	\$47,204,398
---	---------------	---------------------

Grand Total	56,570	\$59,414,198
--------------------	---------------	---------------------

Migratory Bird Conservation Act: MBCC Approvals for Fiscal Year 2016

The Migratory Bird Conservation Commission approved 10 Migratory Bird Conservation Act proposals recommended for funding by the Secretary of the Interior in fiscal year 2016. Commission approvals included a 952-acre area boundary approval, a 12,376-acre boundary addition approval, and price approvals to purchase a total of 20,273 fee or easement acres for \$22,603,279. All land acquisitions were approved in writing by a Governor or the appropriate State agency in the State where the land is located.

New Area Boundary and Price Approval					
<i>Area</i>	<i>State</i>	<i>Approval Date</i>	<i>Boundary Approval Acres</i>	<i>Price Approval Acres</i>	<i>Price Approval Cost</i>
Neches River NWR	Texas	04/20/16	952	952	\$1,476,351
Total			952	952	\$1,476,351
Boundary Addition and Price Approval					
<i>Area</i>	<i>State</i>	<i>Approval Date</i>	<i>Boundary Addition Acres</i>	<i>Price Approval Acres</i>	<i>Price Approval Cost</i>
McFaddin NWR	Texas	09/07/16	+12,376	12,376	\$10,000,000
Total			+12,376	12,376	\$10,000,000
Price Approvals					
<i>Area</i>	<i>State</i>	<i>Approval Date</i>	<i>Boundary Approval Acres</i>	<i>Price Approval Acres</i>	<i>Price Approval Cost</i>
Billy Frank Jr. Nisqually NWR	Washington	04/20/16		949	\$3,466,000
Cache River NWR	Arkansas	04/20/16		978	\$2,391,000
Felsenthal NWR	Arkansas	09/07/16		282	\$473,628
Lower Hatchie NWR	Tennessee	09/07/16		164	\$641,300
Tulare Basin WMA	California	04/20/16		160	\$560,000
Turnbull NWR	Washington	09/07/16		206	\$610,000
Umbagog NWR	Maine	04/20/16		4,091	\$2,583,000
Willow Creek-Lurline WMA (easement)	California	04/20/16		115	\$402,000
Total				6,945	\$11,126,928
Grand Total			13,328	20,273	\$22,603,279

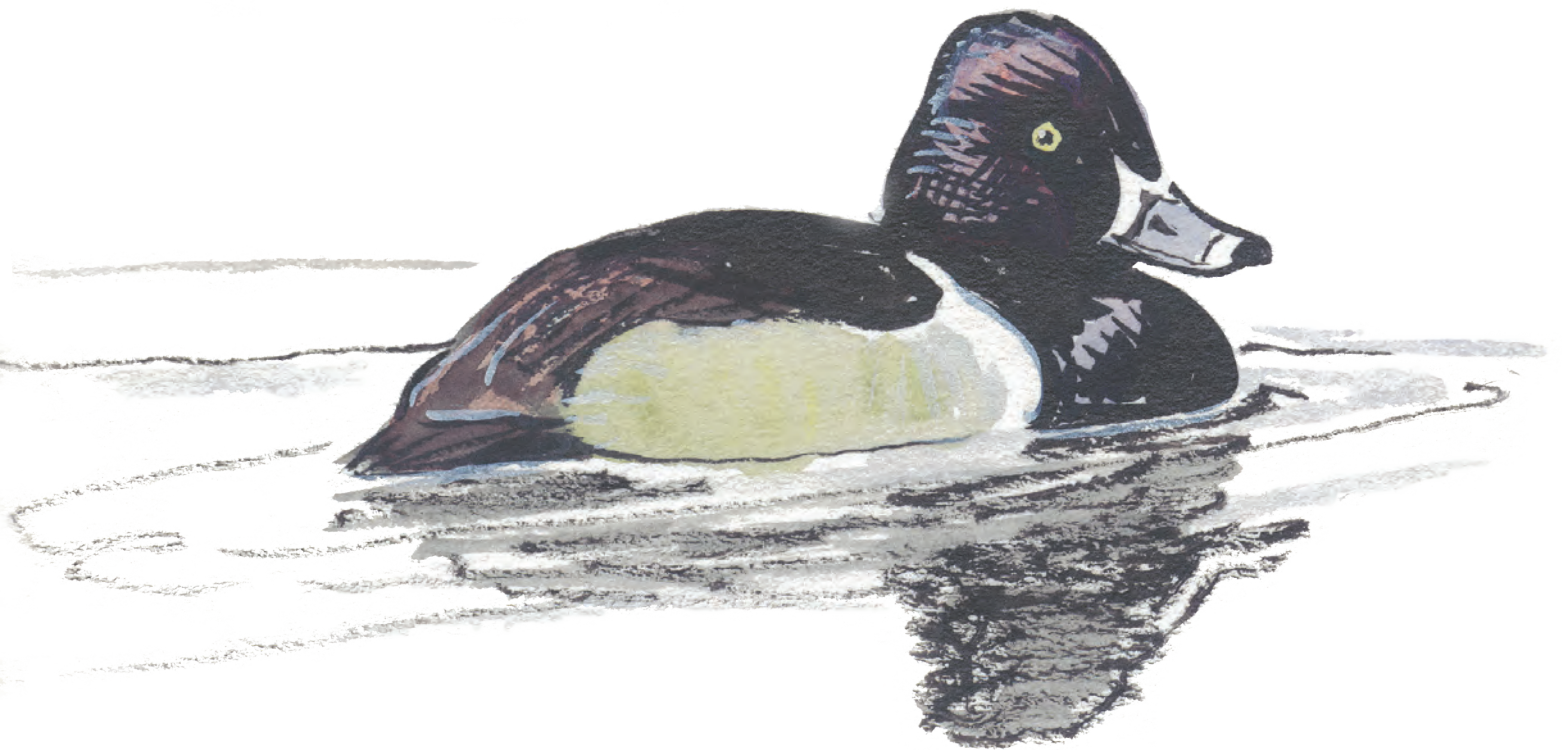
Migratory Bird Conservation Act: New Area Boundary and Boundary Addition Approvals for Fiscal Year 2016

New Area Boundary Approval

Neches River National Wildlife Refuge
Anderson and Cherokee Counties, Texas

Boundary Addition Approval

McFaddin National Wildlife Refuge
Jefferson County, Texas



Neches River National Wildlife Refuge

Anderson and Cherokee Counties, Texas

On April 20, 2016, the Migratory Bird Conservation Commission approved a new 952-acre acquisition area within the Neches River National Wildlife Refuge boundary, and granted price approval for the fee title acquisition of 952 acres.

The Neches River NWR is located 13 miles northeast of Palestine, Texas, along the north Neches River and floodplain between Anderson and Cherokee Counties. The refuge includes a productive complex of bottomland hardwood forest, swamps,

and herbaceous wetlands that provide wintering, migration, and resident habitat for waterfowl, wading birds, neo-tropical migratory birds, and other wetland-dependent species. Thousands of waterfowl winter in the area, including mallards, gadwall, widgeon, blue- and green-winged teal, ring-necked ducks, lesser scaup, buffleheads, and ruddy ducks. The area is also a prime nesting area for wood ducks.

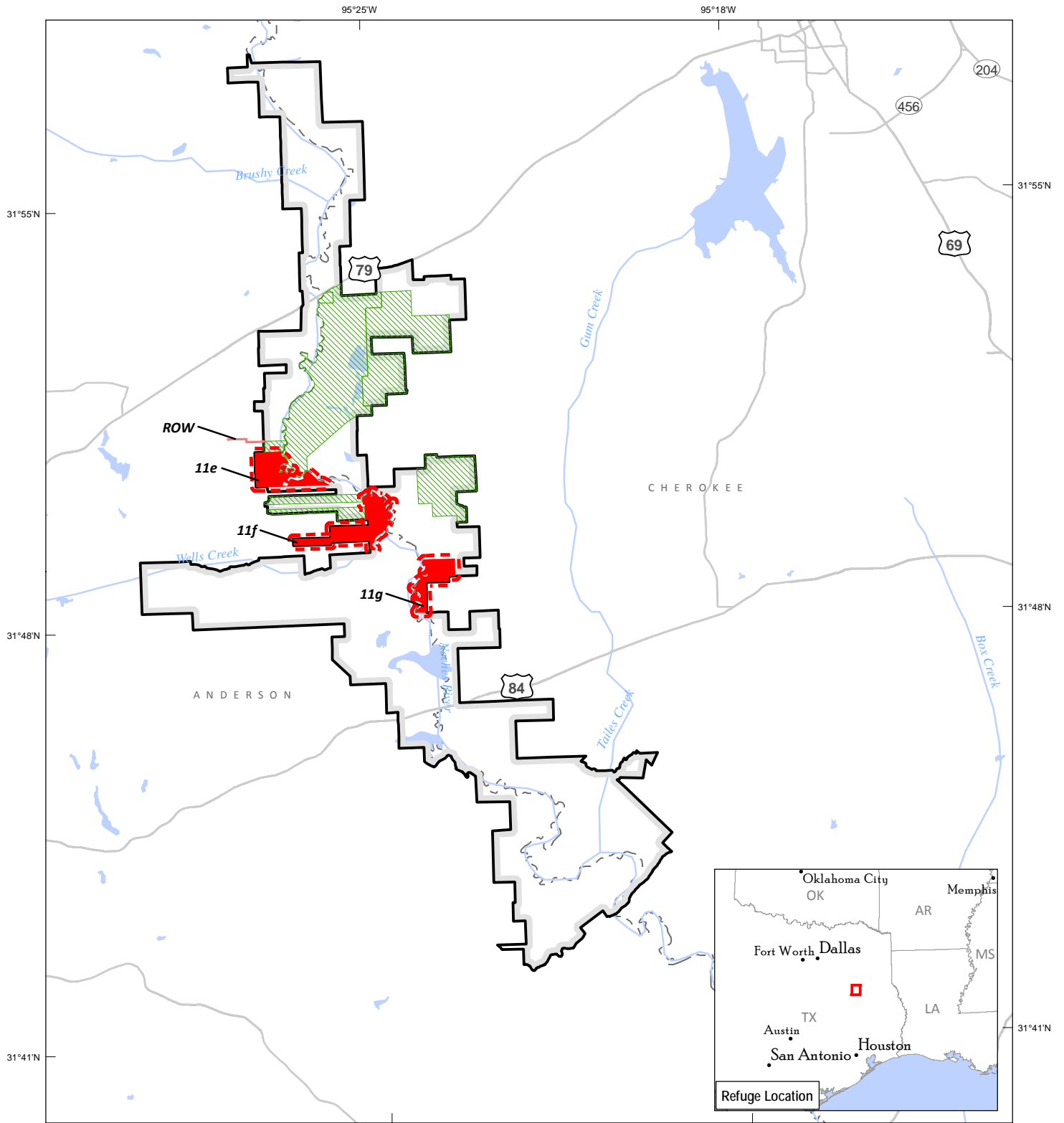
The 952 acres approved for acquisition consist primarily of bottomland hardwood

forest, swamps, and herbaceous wetlands. The Service will manage the property as habitat for waterfowl, wading birds, neo-tropical migrants, and other wildlife that depend on bottomland hardwood forests and associated wetlands. Long-term refuge management goals including providing public wildlife-dependent recreational activities such as hunting, fishing, wildlife observation, and environmental education, and performing habitat management, water management, and inventorying and monitoring of wildlife.

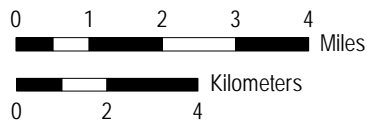


Neches River NWR

New Area Boundary Approval: Neches River National Wildlife Refuge



PRODUCED IN THE DIVISION OF REALTY
 ALBUQUERQUE, NM
 LAND STATUS CURRENT TO: 2/1/16
 MAP DATE: 3/17/2016
 BASEMAP: ESRI / DOE RENEWABLE ENERGY ATLAS
 UTM ZONE 12 PROJECTION
 NAD 83
 16_0031_a



- Boundary to be Approved
- Approved Acquisition Boundary
- Previously Acquired - Fee
- Previously Acquired - Easement
- For Approval - Fee
- 4/20/2016 Date of MBCC Meeting

McFaddin National Wildlife Refuge

Jefferson County, Texas

On September 7, 2016, the Migratory Bird Conservation Commission granted boundary and price approval for the fee title acquisition of the 12,376-acre Sabine Ranch for the McFaddin National Wildlife Refuge.

Located three miles east of the Town of High Island, Texas, the McFaddin NWR is within an area of the Central Flyway on the upper Texas coast that includes more than 100,000 acres of protected beach and marshland on national wildlife refuges and State lands, including the core of the mottled duck habitat in Texas.

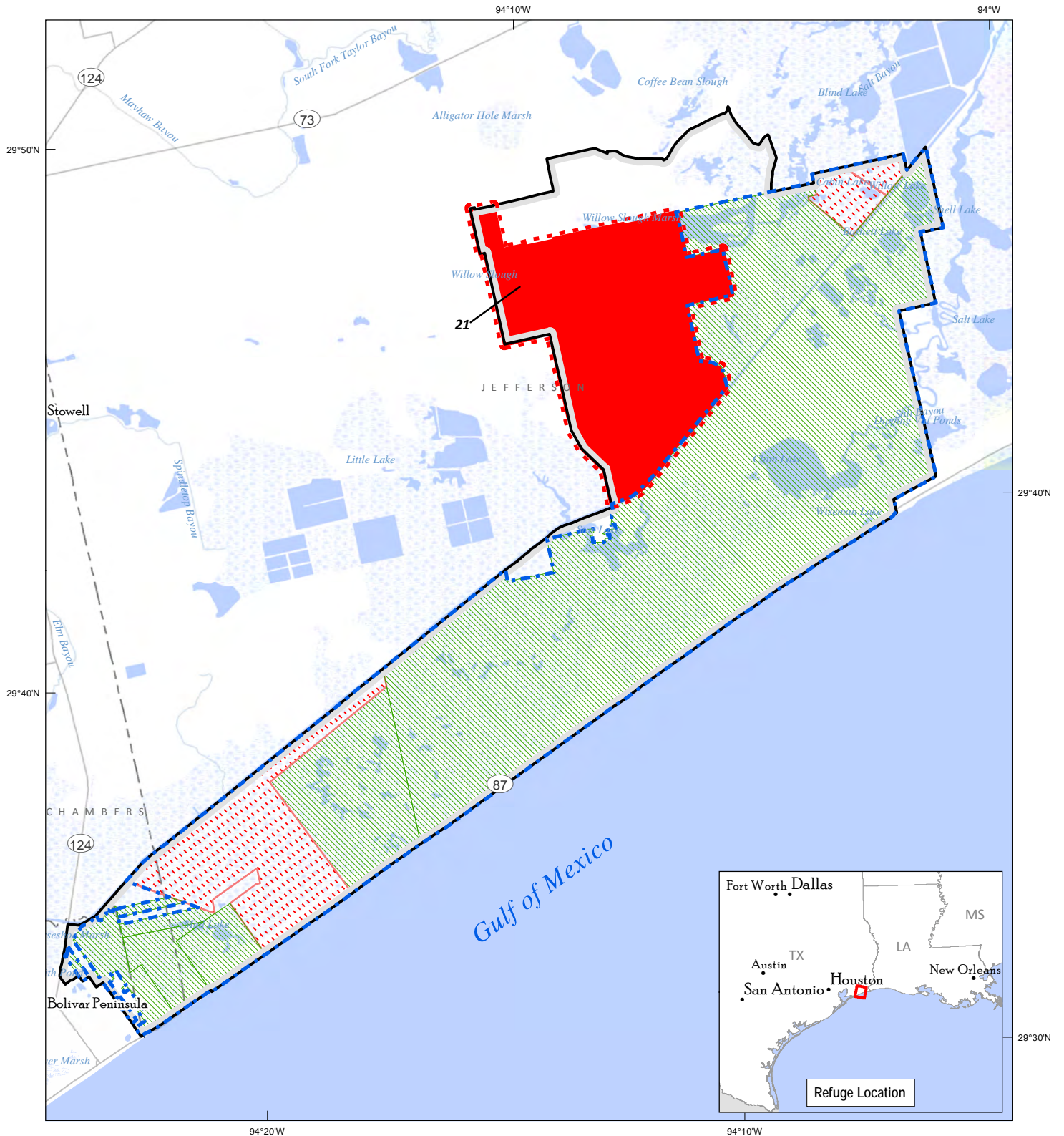
The 12,376 acres approved for acquisition contain a mix of wetlands and coastal prairie that provide important habitat for migrating and wintering waterfowl, including mottled ducks, black-bellied whistling ducks, fulvous whistling ducks, wood ducks, and blue-winged teal. The property includes a large portion of the Willow Slough Marsh, the largest remaining coastal freshwater marsh in Texas, which contains two nationally recognized declining wetland types – estuarine intertidal emergent and palustrine emergent. (The remaining portion of the Willow Slough Marsh is located on adjacent refuge land.)

The property has an approved appraised market value of \$30,000,000, as of April 11, 2016. The Conservation Fund agreed to purchase the \$30,000,000 property and sell it to the Service in a bargain sale, for no more than \$10,000,000. The Service will acquire the property in phases over three years, and manage it as habitat for waterfowl. Long-term management goals for the property include providing public opportunities for wildlife-dependent recreation, including hunting, fishing, wildlife observation, and wildlife photography. The Service also plans to develop and implement youth fishing and other environmental education opportunities on a smaller scale.



McFaddin NWR

Boundary Addition Approval: McFaddin National Wildlife Refuge



PRODUCED IN THE DIVISION OF REALTY
 ALBUQUERQUE, NEW MEXICO
 LAND STATUS CURRENT TO: 2/1/16
 MAP DATE: 8/15/2016
 BASEMAP: ESRI / DOE RENEWABLE ENERGY ATLAS
 UTM_ZONE12 PROJECTION
 NAD 83
 16_0050_f



- MBCC Approved Boundary
- Boundary to be Approved
- Approved Acquisition Boundary
- Previously Acquired - Fee
- Previously Acquired - Easement
- For Approval - Fee
- 9/07/2016 Date of MBCC Meeting

Status of Wetlands Conservation Projects for Migratory Bird Conservation

The information contained in these tables reflect acquisitions and dispositions of land and interests in land that were purchased with Migratory Bird Conservation Fund monies or acquired under the authority of the Migratory Bird Conservation Act. The tables also include other migratory bird areas such as those that were transferred to the Fish and Wildlife Service under the authority of the Transfer of Certain Real Property for Wildlife Conservation Purposes Act of 1948 (Pub. L. 80-537) to carry out a migratory bird management program.

Notes on Tables 1 and 2

In an ongoing effort to improve data quality, the Service has revised slightly the figures in Tables 1 and 2 from previous reports. For example, the Service may acquire a fee interest in lands in which it previously held a less-than-fee interest (lease or easement); accordingly, the number of lease or easement acres will decrease, and the number of fee acres will increase. The acreage appearing in the Approvals section of this report will not appear in Tables 1 or 2 until after the Service

expends the funds and acquires the tracts. Also, a newly approved refuge will not appear on Table 1 until the Service acquires the first tract(s).

Refer to the Annual Report of Lands of the U.S. Fish and Wildlife Service for information on all lands and interests in land managed by the Service. This report is available from the U.S. Fish and Wildlife Service, Division of Realty at <www.fws.gov/refuges/realty>, or by calling 703/358-1713.

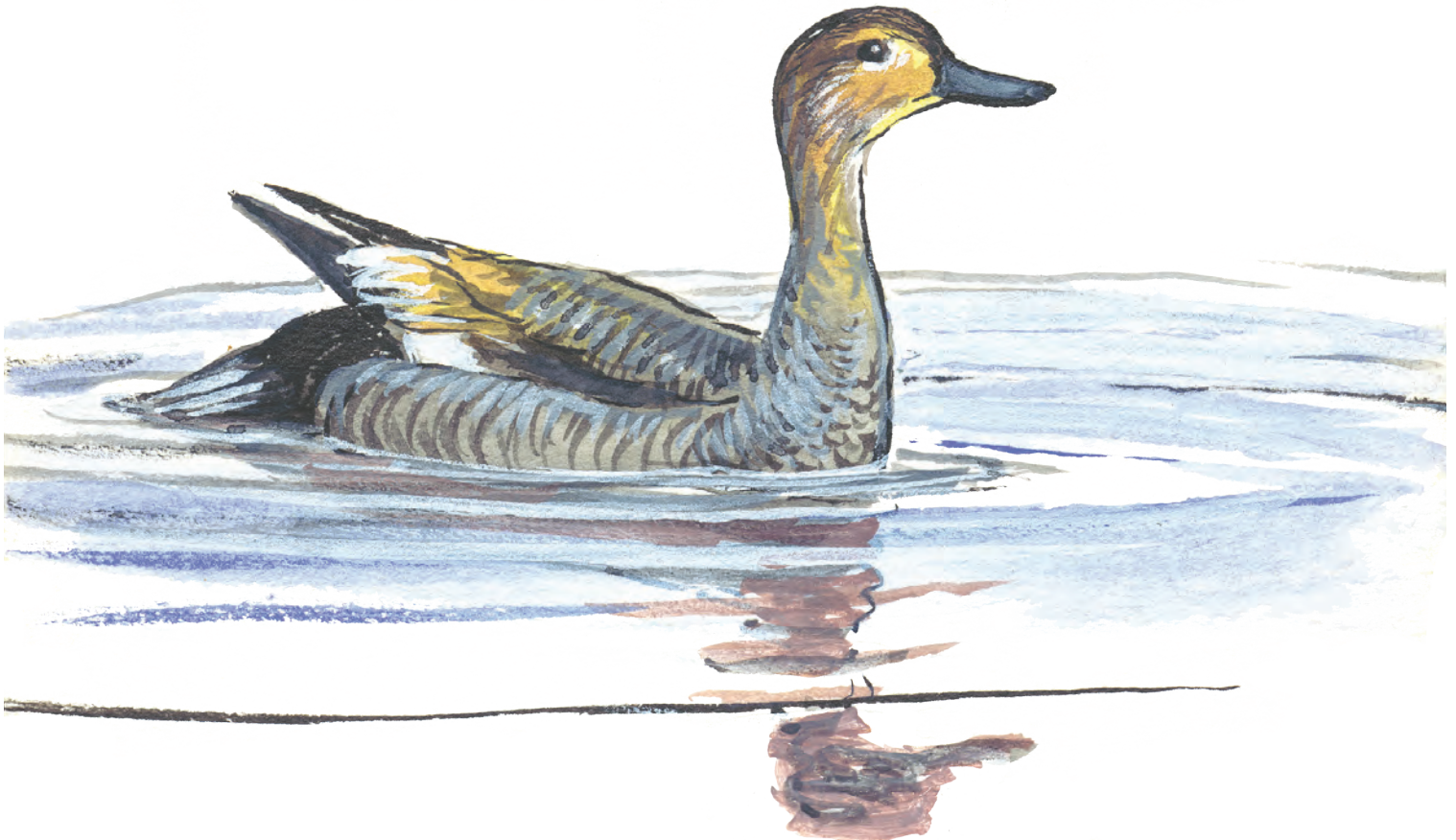


Table 1. Migratory Bird Refuges

State and Unit	FISCAL YEAR MBCF ACQUISITION				CUMULATIVE TOTALS AT END OF FISCAL YEAR					
	Fee Title		Easement or Lease		MBCF				All Other Acres	Total Acres
	Acres	Cost	Acres	Cost	Fee Title		Easement or Lease			
				Acres	Cost	Acres	Cost			
Alabama										
Choctaw	0.00	\$0.00	0.00	\$0.00	0.00	\$0.00	0.00	\$0.00	4,218.00	4,218.00
Eufaula (1)	0.00	\$0.00	0.00	\$0.00	0.00	\$0.00	0.00	\$0.00	7,953.19	7,953.19
FSA Interest AL ***	0.00	\$0.00	0.00	\$0.00	0.00	\$0.00	0.00	\$0.00	842.64	842.64
Wheeler	0.00	\$0.00	0.00	\$0.00	0.00	\$0.00	0.00	\$0.00	34,430.66	34,430.66
State Total	3	\$0.00	\$0.00	\$0.00	0.00	\$0.00	0.00	\$0.00	47,444.49	47,444.49
Arizona										
Cibola (2)	0.00	\$0.00	0.00	\$0.00	0.00	\$0.00	0.00	\$0.00	13,199.34	13,199.34
Havasu (2)	0.00	\$0.00	0.00	\$0.00	0.00	\$0.00	0.00	\$0.00	30,279.82	30,279.82
Imperial (2)	0.00	\$0.00	0.00	\$0.00	0.00	\$0.00	0.00	\$0.00	17,809.76	17,809.76
State Total	3	\$0.00	\$0.00	\$0.00	0.00	\$0.00	0.00	\$0.00	61,288.92	61,288.92
Arkansas										
Bald Knob	0.00	\$0.00	0.00	\$0.00	4,748.40	\$3,427,000.00	0.00	\$0.00	10,273.95	15,022.35
Big Lake	0.00	\$0.00	0.00	\$0.00	562.91	\$31,854.69	0.25	\$3.00	10,483.79	11,046.95
Cache River	625.47	\$1,391,000.00	0.00	\$0.00	50,715.55	\$51,742,291.92	0.00	\$0.00	20,945.87	71,661.42
Dale Bumpers White River	0.00	\$0.00	0.00	\$0.00	10,684.67	\$5,923,070.37	252.87	\$22.00	149,220.71	160,158.25
Felsenthal	1,302.99	\$1,876,160.00	0.00	\$0.00	1,302.99	\$1,876,160.00	0.00	\$0.00	64,902.14	66,205.13
FSA Interest AR ***	0.00	\$0.00	0.00	\$0.00	0.00	\$0.00	0.00	\$0.00	3,461.90	3,461.90
Holla Bend	0.00	\$0.00	0.00	\$0.00	690.45	\$336,903.00	0.00	\$5,175.00	5,608.58	6,299.03
Overflow	0.00	\$0.00	0.00	\$0.00	13,416.75	\$10,943,020.50	9.60	\$0.00	0.00	13,426.35
Wapanocca	0.00	\$0.00	0.00	\$0.00	5,629.25	\$1,528,416.00	0.00	\$0.00	0.00	5,629.25
State Total	8	1,928.46	\$3,267,160.00	\$0.00	87,750.97	\$75,808,716.48	262.72	\$5,200.00	264,896.94	352,910.63
California										
Butte Sink	0.00	\$0.00	0.00	\$0.00	514.98	\$1,650,700.00	10,310.64	\$12,816,903.00	217.88	11,043.50
Cibola (3)*	0.00	\$0.00	0.00	\$0.00	0.00	\$0.00	0.00	\$0.00	5,245.33	5,245.33
Colusa	0.00	\$0.00	0.00	\$0.00	2,384.74	\$107,313.30	0.00	\$0.00	1,655.24	4,039.98
Delevan	0.00	\$0.00	0.00	\$0.00	5,796.54	\$2,345,739.00	0.00	\$175,000.00	0.00	5,796.54
Don Edwards San Fran. Bay	0.00	\$0.00	0.00	\$0.00	0.00	\$0.00	0.00	\$0.00	29,371.43	29,371.43
FSA Interest CA ***	0.00	\$0.00	0.00	\$0.00	0.00	\$0.00	0.00	\$0.00	6,685.64	6,685.64
Grasslands	0.00	\$0.00	0.00	\$0.00	6,442.28	\$9,158,896.00	74,088.00	\$42,665,714.00	14,089.17	94,619.45
Havasu (3)*	0.00	\$0.00	0.00	\$0.00	0.00	\$0.00	0.00	\$0.00	7,235.34	7,235.34
Humboldt Bay	0.00	\$0.00	0.00	\$0.00	2,884.34	\$6,492,650.00	0.00	\$0.00	667.55	3,551.89
Imperial (3)*	0.00	\$0.00	0.00	\$0.00	0.00	\$0.00	0.00	\$0.00	8,198.19	8,198.19
Kern	0.00	\$0.00	0.00	\$0.00	10,543.86	\$579,912.00	0.00	\$0.00	705.31	11,249.17
Lower Klamath (4)	0.00	\$0.00	0.00	\$0.00	4,530.53	\$3,390,123.00	0.00	\$0.00	39,764.02	44,294.55
Merced	0.00	\$0.00	0.00	\$0.00	3,803.82	\$2,180,000.00	0.00	\$0.00	1.76	3,805.58
Modoc	0.00	\$0.00	0.00	\$0.00	5,359.58	\$1,077,634.19	0.00	\$0.00	1,731.65	7,091.23
North Central Valley	0.00	\$0.00	0.00	\$0.00	1,033.28	\$4,445,531.00	9,446.32	\$14,729,148.00	7,365.52	17,845.12
Pixley	0.00	\$0.00	0.00	\$0.00	0.00	\$0.00	0.00	\$0.00	7,405.75	7,405.75
Sacramento	0.00	\$0.00	0.00	\$0.00	10,775.61	\$150,498.00	0.00	\$0.00	43.39	10,819.00
Sacramento River	0.00	\$0.00	0.00	\$0.00	126.40	\$145,000.00	0.00	\$0.00	11,628.85	11,755.25
San Joaquin River	0.00	\$0.00	0.00	\$0.00	1,239.18	\$7,030,819.00	366.55	\$3,576,435.00	9,791.43	11,397.16
San Luis	0.00	\$0.00	0.00	\$0.00	7,422.41	\$2,171,055.00	703.00	\$2,284,000.00	10,337.00	18,462.41
San Pablo Bay	0.00	\$0.00	0.00	\$0.00	248.00	\$243,400.00	0.00	\$0.00	21,781.82	22,029.82
Seal Beach	0.00	\$0.00	0.00	\$0.00	0.00	\$0.00	0.00	\$0.00	910.71	910.71
Sonny Bono Salton Sea	0.00	\$0.00	0.00	\$0.00	9,342.14	\$294,461.80	637.00	\$1,089.27	27,679.73	37,658.87
Stone Lakes	0.00	\$0.00	0.00	\$0.00	214.61	\$1,240,000.00	138.56	\$365,800.00	6,330.40	6,683.57
Sutter	0.00	\$0.00	0.00	\$0.00	2,590.16	\$291,281.80	0.00	\$3,850.00	0.00	2,590.16
Tulare Basin	0.00	\$0.00	204.28	\$580,000.00	0.00	\$0.00	4,109.58	\$8,082,518.00	169.44	4,279.02
Tule Lake	0.00	\$0.00	0.00	\$0.00	0.00	\$0.00	0.00	\$0.00	39,116.58	39,116.58
Willow Creek-Lurline	0.00	\$0.00	114.00	\$398,600.00	0.00	\$0.00	5,900.70	\$7,572,033.00	77.41	5,978.11
State Total	24	\$0.00	\$318.28	\$978,600.00	75,252.46	\$42,995,014.09	105,700.35	\$92,272,490.27	258,206.54	439,159.35
Colorado										
Alamosa	0.00	\$0.00	0.00	\$0.00	10,904.78	\$2,377,463.16	0.00	\$24,035.90	1,121.59	12,026.37
Arapaho	0.00	\$0.00	0.00	\$0.00	17,811.33	\$4,798,286.00	23.23	\$35,358.66	7,686.84	25,521.40
Browns Park	0.00	\$0.00	0.00	\$0.00	5,275.63	\$614,976.00	0.00	\$68,118.76	6,874.25	12,149.88
FSA Interest CO ***	0.00	\$0.00	0.00	\$0.00	0.00	\$0.00	0.00	\$0.00	1,206.64	1,206.64
Monte Vista	0.00	\$0.00	0.00	\$0.00	13,950.66	\$2,241,750.00	0.00	\$0.00	883.33	14,833.99
State Total	4	\$0.00	\$0.00	\$0.00	47,942.40	\$10,032,475.16	23.23	\$127,513.32	17,772.65	65,738.28
Connecticut										
Stewart B. McKinney	0.00	\$0.00	0.00	\$0.00	361.24	\$2,263,560.00	0.00	\$0.00	622.94	984.18
State Total	1	\$0.00	\$0.00	\$0.00	361.24	\$2,263,560.00	0.00	\$0.00	622.94	984.18

Table 1. Migratory Bird Refuges

State and Unit	FISCAL YEAR MBCF ACQUISITION				CUMULATIVE TOTALS AT END OF FISCAL YEAR					
	Fee Title		Easement or Lease		MBCF				All Other Acres	Total Acres
	Acres	Cost	Acres	Cost	Acres	Cost	Acres	Cost		
Delaware										
Bombay Hook	0.00	\$0.00	0.00	\$0.00	15,551.48	\$2,074,738.56	0.00	\$1.00	779.28	16,330.76
FSA Interest DE ***	0.00	\$0.00	0.00	\$0.00	0.00	\$0.00	0.00	\$0.00	2.60	2.60
Prime Hook	0.00	\$0.00	0.00	\$0.00	8,285.70	\$3,735,464.16	79.19	\$5,346.20	1,797.93	10,162.82
State Total 2	0.00	\$0.00	0.00	\$0.00	23,837.18	\$5,810,202.72	79.19	\$5,347.20	2,579.81	26,496.18
Florida										
Arthur R. Marshall Loxahatchee	0.00	\$0.00	0.00	\$0.00	2,549.77	\$118,511.97	0.00	\$0.00	141,404.00	143,953.77
Caloosahatchee	0.00	\$0.00	0.00	\$0.00	0.00	\$0.00	0.00	\$0.00	40.00	40.00
Cedar Keys	0.00	\$0.00	0.00	\$0.00	0.00	\$0.00	0.00	\$0.00	891.15	891.15
Chassahowitzka	0.00	\$0.00	0.00	\$0.00	22,556.82	\$267,529.26	0.00	\$0.00	8,286.09	30,842.91
Egmont Key	0.00	\$0.00	0.00	\$0.00	0.00	\$0.00	0.00	\$0.00	328.30	328.30
FSA Interest FL ***	0.00	\$0.00	0.00	\$0.00	0.00	\$0.00	0.00	\$0.00	3,165.18	3,165.18
Great White Heron	0.00	\$0.00	0.00	\$0.00	1,326.54	\$906,195.00	0.00	\$0.00	116,395.99	117,722.53
Hobe Sound	0.00	\$0.00	0.00	\$0.00	0.00	\$0.00	0.00	\$0.00	1,083.97	1,083.97
J. N. Ding Darling	0.00	\$0.00	0.00	\$0.00	478.05	\$372,370.00	0.00	\$0.00	6,003.01	6,481.06
Lake Woodruff	0.00	\$0.00	0.00	\$0.00	18,413.39	\$1,340,310.75	0.00	\$0.00	2,745.63	21,159.02
Matlacha Pass	0.00	\$0.00	0.00	\$0.00	0.00	\$0.00	0.00	\$0.00	564.73	564.73
Merritt Island	0.00	\$0.00	0.00	\$0.00	0.00	\$0.00	0.00	\$0.00	139,196.47	139,196.47
Okefenokee (1)	0.00	\$0.00	0.00	\$0.00	0.00	\$0.00	0.00	\$0.00	3,694.92	3,694.92
Pine Island	0.00	\$0.00	0.00	\$0.00	0.00	\$0.00	0.00	\$0.00	608.48	608.48
Pinellas	0.00	\$0.00	0.00	\$0.00	0.00	\$0.00	0.00	\$0.00	394.35	394.35
St. Marks	0.00	\$0.00	0.00	\$0.00	30,742.44	\$101,704.79	0.00	\$0.00	41,507.81	72,250.25
St. Vincent	0.00	\$0.00	0.00	\$0.00	12,358.20	\$2,035,000.00	0.00	\$0.00	135.87	12,494.07
State Total 16	0.00	\$0.00	0.00	\$0.00	88,425.21	\$5,141,621.77	0.00	\$0.00	466,445.95	554,871.16
Georgia										
Bond Swamp	0.00	\$0.00	0.00	\$0.00	256.41	\$1,000,000.00	0.00	\$0.00	6,625.90	6,882.31
Eufaula (5)*	0.00	\$0.00	0.00	\$0.00	0.00	\$0.00	0.00	\$0.00	3,231.00	3,231.00
FSA Interest GA ***	0.00	\$0.00	0.00	\$0.00	0.00	\$0.00	0.00	\$0.00	4,974.52	4,974.52
Harris Neck	0.00	\$0.00	0.00	\$0.00	0.00	\$0.00	0.00	\$0.00	2,822.68	2,822.68
Okefenokee (6)*	0.00	\$0.00	0.00	\$0.00	345,208.87	\$867,318.12	0.00	\$0.00	58,032.39	403,241.26
Piedmont	0.00	\$0.00	0.00	\$0.00	473.97	\$44,000.00	0.00	\$0.00	34,491.93	34,965.90
Savannah (7)	0.00	\$0.00	0.00	\$0.00	8,013.39	\$1,705,352.40	0.00	\$0.00	6,150.09	14,163.48
Wassaw	0.00	\$0.00	0.00	\$0.00	0.00	\$0.00	0.00	\$0.00	10,053.30	10,053.30
Wolf Island	0.00	\$0.00	0.00	\$0.00	4,587.82	\$120,813.52	0.00	\$0.00	538.00	5,125.82
State Total 6	0.00	\$0.00	0.00	\$0.00	358,540.46	\$3,737,484.04	0.00	\$0.00	126,919.81	485,460.27
Idaho										
Bear Lake	0.00	\$0.00	0.00	\$0.00	626.57	\$212,279.30	0.00	\$1.00	17,582.09	18,208.66
Camas	0.00	\$0.00	0.00	\$0.00	10,437.00	\$202,700.84	0.00	\$0.00	220.19	10,657.19
Deer Flat (4)	0.00	\$0.00	0.00	\$0.00	242.89	\$26,415.50	0.00	\$0.00	11,172.06	11,414.95
FSA Interest ID ***	0.00	\$0.00	0.00	\$0.00	0.00	\$0.00	0.00	\$0.00	1,324.40	1,324.40
Grays Lake	0.00	\$0.00	0.00	\$0.00	4,038.18	\$1,843,000.00	32.49	\$4,518.30	16,054.41	20,125.08
Kootenai	0.00	\$0.00	0.00	\$0.00	2,774.15	\$708,100.00	0.00	\$0.00	0.14	2,774.29
State Total 5	0.00	\$0.00	0.00	\$0.00	18,118.79	\$2,992,495.64	32.49	\$4,519.30	46,353.29	64,504.57
Illinois										
Chautauqua	0.00	\$0.00	0.00	\$0.00	44.54	\$2,525.38	0.00	\$0.00	6,543.45	6,587.99
Crab Orchard	0.00	\$0.00	0.00	\$0.00	651.07	\$0.00	0.00	\$0.00	43,324.46	43,975.53
FSA Interest IL ***	0.00	\$0.00	0.00	\$0.00	0.00	\$0.00	0.00	\$0.00	806.40	806.40
Great River (8)	0.00	\$0.00	0.00	\$0.00	1,559.87	\$353,202.72	0.00	\$0.00	6,410.76	7,970.63
Meredosia	0.00	\$0.00	0.00	\$0.00	0.00	\$0.00	0.00	\$0.00	3,502.46	3,502.46
Middle Mississippi River (8)	0.00	\$0.00	0.00	\$0.00	0.00	\$0.00	0.00	\$0.00	6,398.94	6,398.94
Port Louisa (19)	0.00	\$0.00	0.00	\$0.00	0.00	\$0.00	0.00	\$0.00	1,470.89	1,470.89
Two Rivers (8)	0.00	\$0.00	0.00	\$0.00	796.17	\$346,943.75	0.00	\$0.00	7,237.03	8,033.20
State Total 8	0.00	\$0.00	0.00	\$0.00	3,051.65	\$702,671.85	0.00	\$0.00	75,694.39	78,746.04
Indiana										
FSA Interest IN ***	0.00	\$0.00	0.00	\$0.00	0.00	\$0.00	0.00	\$0.00	746.96	746.96
Muscatatuck	0.00	\$0.00	0.00	\$0.00	7,713.53	\$3,582,837.72	0.00	\$0.00	88.69	7,802.22
State Total 1	0.00	\$0.00	0.00	\$0.00	7,713.53	\$3,582,837.72	0.00	\$0.00	835.65	8,549.18
Iowa										
Desoto (10)	0.00	\$0.00	0.00	\$0.00	3,444.79	\$639,117.53	0.00	\$0.00	57.98	3,502.77
FSA Interest IA ***	0.00	\$0.00	0.00	\$0.00	0.00	\$0.00	0.00	\$0.00	566.17	566.17
Port Louisa (11)*	0.00	\$0.00	0.00	\$0.00	47.50	\$16,000.00	0.00	\$0.00	22,599.86	22,647.36

Table 1. Migratory Bird Refuges

State and Unit	FISCAL YEAR MBCF ACQUISITION				CUMULATIVE TOTALS AT END OF FISCAL YEAR						
	Fee Title		Easement or Lease		MBCF				All Other Acres	Total Acres	
	Acres	Cost	Acres	Cost	Acres	Cost	Acres	Cost			
Iowa (Continued)											
Union Slough	0.00	\$0.00	0.00	\$0.00	2,845.24	\$210,406.69	70.70	\$608.00	0.00	2,915.94	
State Total 2	0.00	\$0.00	0.00	\$0.00	6,337.53	\$865,524.22	70.70	\$608.00	23,224.01	29,632.24	
Kansas											
Flint Hills	0.00	\$0.00	0.00	\$0.00	0.00	\$0.00	0.00	\$0.00	18,463.36	18,463.36	
FSA Interest KS ***	0.00	\$0.00	0.00	\$0.00	0.00	\$0.00	0.00	\$0.00	116.50	116.50	
Kirwin	0.00	\$0.00	0.00	\$0.00	0.00	\$0.00	0.00	\$0.00	10,778.00	10,778.00	
Quivira	0.00	\$0.00	0.00	\$0.00	21,820.10	\$2,059,238.00	0.00	\$0.00	199.20	22,019.30	
State Total 3	0.00	\$0.00	0.00	\$0.00	21,820.10	\$2,059,238.00	0.00	\$0.00	29,557.06	51,377.16	
Kentucky											
Reelfoot (14)	0.00	\$0.00	0.00	\$0.00	2,039.64	\$418,450.15	0.00	\$0.00	0.00	2,039.64	
State Total 1	0.00	\$0.00	0.00	\$0.00	2,039.64	\$418,450.15	0.00	\$0.00	0.00	2,039.64	
Louisiana											
Bayou Cocodrie	0.00	\$0.00	0.00	\$0.00	4,913.60	\$3,697,578.00	0.00	\$0.00	9,804.91	14,718.51	
Bayou Sauvage	0.00	\$0.00	0.00	\$0.00	2,027.40	\$1,112,500.00	0.00	\$0.00	22,623.33	24,650.73	
Black Bayou Lake	0.00	\$0.00	0.00	\$0.00	892.74	\$2,160,350.00	0.00	\$0.00	4,433.71	5,326.45	
Cameron Prairie	0.00	\$0.00	0.00	\$0.00	9,621.30	\$5,090,650.00	0.00	\$0.00	14,926.73	24,548.03	
Cat Island	383.46	\$728,600.00	0.00	\$0.00	2,024.90	\$3,304,600.00	0.00	\$0.00	8,832.91	10,857.81	
Catahoula	0.00	\$0.00	0.00	\$0.00	14,869.86	\$2,190,082.25	0.00	\$0.00	10,154.05	25,023.91	
D'Arbonne	0.00	\$0.00	0.00	\$0.00	0.00	\$0.00	0.00	\$0.00	17,419.63	17,419.63	
Delta	0.00	\$0.00	0.00	\$0.00	34,462.73	\$233,324.17	0.00	\$0.00	14,338.68	48,801.41	
FSA Interest LA ***	0.00	\$0.00	0.00	\$0.00	0.00	\$0.00	0.00	\$0.00	10,882.39	10,882.39	
Grand Cote	0.00	\$0.00	0.00	\$0.00	1,882.56	\$876,173.00	0.00	\$0.00	4,131.77	6,014.33	
Lacassine	0.00	\$0.00	0.00	\$0.00	8,792.32	\$999,156.43	640.00	\$337,600.00	24,928.07	34,360.39	
Lake Ophelia	0.00	\$0.00	0.00	\$0.00	3,064.90	\$1,451,930.00	0.00	\$0.00	14,496.56	17,561.46	
Mandalay	0.00	\$0.00	0.00	\$0.00	0.00	\$0.00	0.00	\$0.00	4,619.73	4,619.73	
Red River	0.00	\$0.00	0.00	\$0.00	5,045.92	\$4,922,901.00	0.00	\$0.00	9,845.39	14,891.31	
Sabine	0.00	\$0.00	0.00	\$0.00	566.66	\$14,000.51	0.00	\$0.00	125,223.42	125,790.08	
Tensas River	0.00	\$0.00	0.00	\$0.00	2,657.94	\$2,220,227.00	0.00	\$0.00	74,785.99	77,443.93	
Upper Ouachita	861.04	\$1,008,686.00	0.00	\$0.00	52,087.26	\$36,133,014.00	0.00	\$1,823,540.00	2,110.30	54,197.56	
State Total 16	1,244.50	\$1,737,286.00	0.00	\$0.00	142,910.09	\$64,406,486.36	640.00	\$2,161,140.00	373,557.57	517,107.66	
Maine											
Aroostook	0.00	\$0.00	0.00	\$0.00	0.00	\$0.00	0.00	\$0.00	5,252.25	5,252.25	
Cross Island	0.00	\$0.00	0.00	\$0.00	0.00	\$0.00	0.00	\$0.00	1,723.10	1,723.10	
Franklin Island	0.00	\$0.00	0.00	\$0.00	0.00	\$0.00	0.00	\$0.00	11.94	11.94	
FSA Interest ME ***	0.00	\$0.00	0.00	\$0.00	0.00	\$0.00	0.00	\$0.00	622.08	622.08	
Moosehorn	0.00	\$0.00	0.00	\$0.00	19,782.52	\$2,023,308.59	0.00	\$0.00	9,836.22	29,618.74	
Petit Manan	0.00	\$0.00	0.00	\$0.00	1,472.30	\$350,000.00	0.00	\$0.00	4,957.54	6,429.84	
Pond Island	0.00	\$0.00	0.00	\$0.00	0.00	\$0.00	0.00	\$0.00	10.00	10.00	
Rachel Carson	0.00	\$0.00	0.00	\$0.00	2,870.31	\$1,539,347.75	2.97	\$3,100.00	2,694.78	5,568.06	
Seal Island	0.00	\$0.00	0.00	\$0.00	0.00	\$0.00	0.00	\$0.00	65.00	65.00	
Sunkhaze Meadows	0.00	\$0.00	0.00	\$0.00	1,170.00	\$250,500.00	0.00	\$0.00	10,265.71	11,435.71	
Umbagog (36)*	0.00	\$0.00	0.00	\$0.00	3,993.24	\$1,926,119.70	0.00	\$0.00	3,983.17	7,976.41	
State Total 9	0.00	\$0.00	0.00	\$0.00	29,288.37	\$6,089,276.04	2.97	\$3,100.00	39,421.79	68,713.13	
Maryland											
Blackwater	497.05	\$1,948,000.00	0.00	\$0.00	21,660.33	\$16,469,496.86	0.00	\$0.00	7,731.07	29,391.40	
Chincoteague (16)*	0.00	\$0.00	0.00	\$0.00	417.81	\$13,780.42	0.00	\$0.00	0.00	417.81	
Eastern Neck	0.00	\$0.00	0.00	\$0.00	2,286.27	\$1,606,145.09	0.00	\$0.00	0.00	2,286.27	
FSA Interest MD ***	0.00	\$0.00	0.00	\$0.00	0.00	\$0.00	0.00	\$0.00	67.94	67.94	
Martin (16)	0.00	\$0.00	0.00	\$0.00	1,853.57	\$61,027.00	0.00	\$0.00	2,569.86	4,423.43	
Patuxent	0.00	\$0.00	0.00	\$0.00	431.93	\$7,667.57	0.00	\$0.00	12,409.00	12,840.93	
Susquehanna	0.00	\$0.00	0.00	\$0.00	0.00	\$0.00	0.00	\$0.00	3.79	3.79	
State Total 5	497.05	\$1,948,000.00	0.00	\$0.00	26,649.91	\$18,158,116.94	0.00	\$0.00	22,781.66	49,431.57	
Massachusetts											
Assabet River	0.00	\$0.00	0.00	\$0.00	103.38	\$125,273.00	0.00	\$0.00	2,229.20	2,332.58	
Great Meadows	0.00	\$0.00	0.00	\$0.00	2,902.81	\$2,209,918.90	0.00	\$0.00	949.20	3,852.01	
Monomoy	0.00	\$0.00	0.00	\$0.00	7,820.96	\$18,339.00	0.00	\$0.00	92.83	7,913.79	
Nantucket	0.00	\$0.00	0.00	\$0.00	0.00	\$0.00	0.00	\$0.00	24.00	24.00	
Nomans Land Island	0.00	\$0.00	0.00	\$0.00	0.00	\$0.00	0.00	\$0.00	628.00	628.00	
Oxbow	0.00	\$0.00	0.00	\$0.00	0.00	\$0.00	0.00	\$0.00	1,697.53	1,697.53	
Parker River	0.00	\$0.00	0.00	\$0.00	4,617.79	\$107,740.84	0.00	\$0.00	109.42	4,727.21	
Silvio O. Conte (41)*	0.00	\$0.00	0.00	\$0.00	230.38	\$371,361.00	0.00	\$0.00	719.18	949.56	

Table 1. Migratory Bird Refuges

State and Unit	FISCAL YEAR MBCF ACQUISITION				CUMULATIVE TOTALS AT END OF FISCAL YEAR					
	Fee Title		Easement or Lease		MBCF				All Other Acres	Total Acres
	Acres	Cost	Acres	Cost	Fee Title		Easement or Lease			
				Acres	Cost	Acres	Cost			
Massachusetts (Continued)										
Thacher Island	0.00	\$0.00	0.00	\$0.00	0.00	\$0.00	0.00	\$0.00	22.00	22.00
State Total 8	0.00	\$0.00	0.00	\$0.00	15,675.32	\$2,832,632.74	0.00	\$0.00	6,471.36	22,146.68
Michigan										
Detroit River	0.00	\$0.00	0.00	\$0.00	283.95	\$1,749,068.00	0.00	\$0.00	5,633.15	5,917.10
FSA Interest MI ***	0.00	\$0.00	0.00	\$0.00	0.00	\$0.00	0.00	\$0.00	5,220.70	5,220.70
Michigan Islands	0.00	\$0.00	0.00	\$0.00	0.00	\$0.00	0.00	\$0.00	751.73	751.73
Seney	0.00	\$0.00	0.00	\$0.00	44,201.80	\$127,726.66	0.00	\$0.00	51,062.86	95,264.66
Shiawassee	0.00	\$0.00	0.00	\$0.00	8,376.46	\$1,401,015.67	0.00	\$0.00	1,493.89	9,870.35
State Total 4	0.00	\$0.00	0.00	\$0.00	52,862.21	\$3,277,810.33	0.00	\$0.00	64,162.33	117,024.54
Minnesota										
Agassiz	0.00	\$0.00	0.00	\$0.00	700.11	\$40,226.04	0.00	\$0.00	60,800.82	61,500.93
Big Stone	0.00	\$0.00	0.00	\$0.00	0.00	\$0.00	0.00	\$0.00	11,585.42	11,585.42
FSA Interest MN ***	0.00	\$0.00	0.00	\$0.00	0.00	\$0.00	0.00	\$0.00	8,906.20	8,906.20
Glacial Ridge	0.00	\$0.00	0.00	\$0.00	16,722.61	\$4,175,000.00	0.00	\$0.00	6,342.24	23,064.85
Hamden Slough	0.00	\$0.00	0.00	\$0.00	3,136.45	\$1,832,872.00	73.40	\$0.00	13.14	3,222.99
Rice Lake	0.00	\$0.00	0.00	\$0.00	6,435.60	\$197,329.77	0.00	\$0.00	7,991.32	14,426.92
Rydell	0.00	\$0.00	0.00	\$0.00	0.00	\$0.00	0.00	\$0.00	2,070.00	2,070.00
Sherburne	0.00	\$0.00	0.00	\$0.00	29,556.90	\$3,273,341.05	0.00	\$0.00	120.94	29,677.84
Tamarac	0.00	\$0.00	0.00	\$0.00	35,151.38	\$612,159.93	0.00	\$0.00	46.58	35,197.96
State Total 8	0.00	\$0.00	0.00	\$0.00	91,703.05	\$10,130,928.79	73.40	\$0.00	97,876.66	189,653.11
Mississippi										
Coldwater River	0.00	\$0.00	0.00	\$0.00	2,387.50	\$2,198,450.00	0.00	\$0.00	94.26	2,481.76
Dahomey	0.00	\$0.00	0.00	\$0.00	0.00	\$0.00	260.00	\$63,180.00	8,906.80	9,166.80
FSA Interest MS ***	0.00	\$0.00	0.00	\$0.00	0.00	\$0.00	0.00	\$0.00	17,388.64	17,388.64
Hillside	0.00	\$0.00	0.00	\$0.00	291.43	\$164,500.00	0.00	\$0.00	15,407.37	15,698.80
Mathews Brake	0.00	\$0.00	0.00	\$0.00	2,406.07	\$1,691,446.00	0.00	\$0.00	8.64	2,414.71
Morgan Brake	0.00	\$0.00	0.00	\$0.00	7,241.28	\$4,517,482.20	0.00	\$0.00	222.49	7,463.77
Panther Swamp	0.00	\$0.00	0.00	\$0.00	32,243.96	\$20,453,483.00	640.00	\$244,710.00	7,765.06	40,649.02
Sam D. Hamilton Noxubee	0.00	\$0.00	0.00	\$0.00	1,427.14	\$145,413.05	0.00	\$0.00	45,850.02	47,277.16
St. Catherine Creek	0.00	\$0.00	0.00	\$0.00	24,429.29	\$12,925,167.00	502.10	\$164,799.92	160.00	25,091.39
Tallahatchie	0.00	\$0.00	0.00	\$0.00	2,489.63	\$1,361,000.00	0.00	\$0.00	2,098.11	4,587.74
Yazoo	0.00	\$0.00	0.00	\$0.00	12,940.43	\$2,659,743.78	0.00	\$32,760.00	2.21	12,942.64
State Total 10	0.00	\$0.00	0.00	\$0.00	85,856.73	\$46,116,685.03	1,402.10	\$505,449.92	97,903.60	185,162.43
Missouri										
Clarence Cannon	0.00	\$0.00	0.00	\$0.00	3,736.04	\$1,163,649.25	0.00	\$0.00	14.44	3,750.48
FSA Interest MO ***	0.00	\$0.00	0.00	\$0.00	0.00	\$0.00	0.00	\$0.00	6,343.75	6,343.75
Great River (11)*	0.00	\$0.00	0.00	\$0.00	1,119.78	\$460,000.00	0.00	\$0.00	988.15	2,107.93
Middle Mississippi River (11)*	0.00	\$0.00	0.00	\$0.00	0.00	\$0.00	0.00	\$0.00	1,704.17	1,704.17
Mingo	0.00	\$0.00	0.00	\$0.00	21,535.95	\$298,615.82	11.86	\$27.00	113.24	21,661.05
Squaw Creek	0.00	\$0.00	0.00	\$0.00	801.32	\$38,275.46	1.00	\$0.00	6,612.57	7,414.89
Swan Lake	0.00	\$0.00	0.00	\$0.00	5,379.32	\$355,193.19	0.00	\$0.00	6,113.65	11,492.97
Two Rivers (11)*	0.00	\$0.00	0.00	\$0.00	0.00	\$0.00	0.00	\$0.00	232.00	232.00
State Total 4	0.00	\$0.00	0.00	\$0.00	32,572.41	\$2,315,733.72	12.86	\$27.00	22,121.97	54,707.24
Montana										
Benton Lake	0.00	\$0.00	0.00	\$0.00	147.64	\$5,315.00	60.94	\$8,763.00	12,292.94	12,501.52
Black Coulee	0.00	\$0.00	0.00	\$0.00	0.00	\$0.00	0.00	\$0.00	1,308.88	1,308.88
Bowdoin	0.00	\$0.00	0.00	\$0.00	0.00	\$0.00	0.00	\$0.00	15,551.97	15,551.97
Charles M. Russell	0.00	\$0.00	0.00	\$0.00	0.00	\$0.00	0.00	\$0.00	934,395.17	934,395.17
Creedman Coulee	0.00	\$0.00	0.00	\$0.00	0.00	\$0.00	0.00	\$0.00	2,728.00	2,728.00
FSA Interest MT ***	0.00	\$0.00	0.00	\$0.00	0.00	\$0.00	0.00	\$0.00	2,065.12	2,065.12
Grass Lake	0.00	\$0.00	0.00	\$0.00	3,279.02	\$291,000.00	640.00	\$35,328.86	399.22	4,318.24
Hailstone	0.00	\$0.00	0.00	\$0.00	0.00	\$0.00	0.00	\$0.00	920.00	920.00
Hewitt Lake	0.00	\$0.00	0.00	\$0.00	0.00	\$0.00	0.00	\$0.00	1,360.92	1,360.92
Lake Mason	0.00	\$0.00	0.00	\$0.00	4,100.45	\$0.00	0.00	\$0.00	12,714.07	16,814.52
Lake Thibadeau	0.00	\$0.00	0.00	\$0.00	0.00	\$0.00	0.00	\$0.00	3,868.48	3,868.48
Lamesteer	0.00	\$0.00	0.00	\$0.00	0.00	\$0.00	0.00	\$0.00	800.00	800.00
Lee Metcalf	0.00	\$0.00	0.00	\$0.00	2,696.29	\$799,680.00	0.00	\$0.00	103.23	2,799.52
Lost Trail	0.00	\$0.00	0.00	\$0.00	4,693.20	\$1,728,205.00	1,029.04	\$4,128.48	3,182.87	8,905.11
Medicine Lake	0.00	\$0.00	0.00	\$0.00	2,513.26	\$25,460.00	0.00	\$0.00	29,020.45	31,533.71
Red Rock Lakes	0.00	\$0.00	0.00	\$0.00	3,615.28	\$4,544,191.00	3,106.32	\$103,496.38	78,090.87	84,812.47
Swan River	0.00	\$0.00	0.00	\$0.00	1,568.81	\$901,645.00	0.00	\$0.00	0.00	1,568.81

Table 1. Migratory Bird Refuges

State and Unit	FISCAL YEAR MBCF ACQUISITION				CUMULATIVE TOTALS AT END OF FISCAL YEAR					
	Fee Title		Easement or Lease		MBCF				All Other Acres	Total Acres
	Acres	Cost	Acres	Cost	Acres	Cost	Acres	Cost		
Montana (Continued)										
UL Bend	0.00	\$0.00	0.00	\$0.00	9,688.19	\$577,280.00	0.00	\$0.00	46,401.37	56,089.56
War Horse	0.00	\$0.00	0.00	\$0.00	0.00	\$0.00	0.00	\$0.00	3,392.87	3,392.87
State Total	18	0.00	0.00	0.00	32,302.14	\$8,872,776.00	4,836.30	\$151,716.72	1,148,596.43	1,185,734.87
Nebraska										
Crescent Lake	0.00	\$0.00	0.00	\$0.00	3,710.00	\$31,048.00	31.49	\$3,189.00	42,253.86	45,995.35
Desoto (19)*	0.00	\$0.00	0.00	\$0.00	3,660.32	\$591,507.20	0.00	\$0.00	663.88	4,324.20
FSA Interest NE ***	0.00	\$0.00	0.00	\$0.00	0.00	\$0.00	0.00	\$0.00	3,113.76	3,113.76
Valentine	0.00	\$0.00	0.00	\$0.00	6,158.34	\$62,747.00	0.00	\$0.00	66,939.75	73,098.09
State Total	2	0.00	0.00	0.00	13,528.66	\$685,302.20	31.49	\$3,189.00	112,971.25	126,531.40
Nevada										
Anaho Island	0.00	\$0.00	0.00	\$0.00	0.00	\$0.00	0.00	\$0.00	247.73	247.73
Desert	0.00	\$0.00	0.00	\$0.00	320.00	\$5,600.00	0.00	\$0.00	1,614,993.49	1,615,313.49
Fallon	0.00	\$0.00	0.00	\$0.00	0.00	\$0.00	0.00	\$0.00	17,901.94	17,901.94
Pahranagat	0.00	\$0.00	0.00	\$0.00	3,915.60	\$500,000.00	0.75	\$0.00	1,467.55	5,383.90
Ruby Lake	0.00	\$0.00	0.00	\$0.00	29,945.73	\$208,437.25	0.00	\$0.00	9,980.37	39,926.10
Sheldon (4)	0.00	\$0.00	0.00	\$0.00	23,143.67	\$2,002.00	0.00	\$0.00	549,842.48	572,986.15
Stillwater	0.00	\$0.00	0.00	\$0.00	0.00	\$0.00	0.00	\$0.00	87,550.76	87,550.76
State Total	7	0.00	0.00	0.00	57,325.00	\$716,039.25	0.75	\$0.00	2,281,984.32	2,339,310.07
New Hampshire										
Silvio O. Conte (42)*	0.00	\$0.00	0.00	\$0.00	2,690.09	\$2,733,645.50	3.40	\$2,054.50	5,757.29	8,450.78
Umbagog (37)	0.00	\$0.00	0.00	\$0.00	10,656.39	\$6,135,246.58	0.00	\$1.00	13,971.84	24,628.23
State Total	1	0.00	0.00	0.00	13,346.48	\$8,868,892.08	3.40	\$2,055.50	19,729.13	33,079.01
New Jersey										
Cape May	0.00	\$0.00	0.00	\$0.00	4,564.56	\$5,038,193.00	0.00	\$0.00	7,568.11	12,132.67
Edwin B. Forsythe	0.00	\$0.00	0.00	\$0.00	40,002.73	\$17,903,592.97	0.00	\$1,300.00	7,434.44	47,437.17
Great Swamp	0.00	\$0.00	0.00	\$0.00	2,808.67	\$3,577,691.05	0.00	\$0.00	4,970.92	7,779.59
Supawna Meadows	0.00	\$0.00	0.00	\$0.00	2,526.83	\$968,744.00	0.00	\$0.00	746.52	3,273.35
Wallkill River (39)*	0.00	\$0.00	0.00	\$0.00	1,382.51	\$3,001,912.50	2.08	\$1.00	4,266.08	5,650.67
State Total	4	0.00	0.00	0.00	51,285.30	\$30,490,133.52	2.08	\$1,301.00	24,986.07	76,273.45
New Mexico										
Bitter Lake	0.00	\$0.00	0.00	\$0.00	10,753.66	\$52,304.00	0.00	\$0.00	13,854.98	24,608.64
Bosque del Apache	0.00	\$0.00	0.00	\$0.00	56,850.31	\$125,311.00	0.00	\$0.00	480.87	57,331.18
Las Vegas	0.00	\$0.00	0.00	\$0.00	8,672.08	\$2,121,150.00	0.00	\$0.00	0.00	8,672.08
Maxwell	0.00	\$0.00	0.00	\$0.00	2,791.69	\$423,370.79	0.00	\$0.00	906.90	3,698.59
State Total	4	0.00	0.00	0.00	79,067.74	\$2,722,135.79	0.00	\$0.00	15,242.75	94,310.49
New York										
Amagansett	0.00	\$0.00	0.00	\$0.00	0.00	\$0.00	0.00	\$0.00	35.84	35.84
Conscience Point	0.00	\$0.00	0.00	\$0.00	0.00	\$0.00	0.00	\$0.00	60.40	60.40
Elizabeth A. Morton	0.00	\$0.00	0.00	\$0.00	0.00	\$0.00	0.00	\$0.00	187.19	187.19
FSA Interest NY ***	0.00	\$0.00	0.00	\$0.00	0.00	\$0.00	0.00	\$0.00	2,706.76	2,706.76
Iroquois	0.00	\$0.00	0.00	\$0.00	10,757.81	\$1,279,615.46	0.00	\$0.00	70.25	10,828.06
Montezuma	0.00	\$0.00	0.00	\$0.00	8,612.60	\$5,027,718.56	0.00	\$0.00	1,391.98	10,004.58
Oyster Bay	0.00	\$0.00	0.00	\$0.00	0.00	\$0.00	0.00	\$0.00	3,362.48	3,362.48
Seatuck	0.00	\$0.00	0.00	\$0.00	0.00	\$0.00	0.00	\$0.00	209.23	209.23
Shawangunk Grasslands	0.00	\$0.00	0.00	\$0.00	0.00	\$0.00	0.00	\$0.00	597.54	597.54
Target Rock	0.00	\$0.00	0.00	\$0.00	0.00	\$0.00	0.00	\$0.00	80.09	80.09
Wallkill River (40)	0.00	\$0.00	0.00	\$0.00	0.00	\$0.00	0.00	\$0.00	307.69	307.69
Wertheim	0.00	\$0.00	0.00	\$0.00	188.70	\$193,217.80	0.00	\$0.00	2,499.09	2,687.79
State Total	11	0.00	0.00	0.00	19,559.11	\$6,500,551.82	0.00	\$0.00	11,508.54	31,067.65
North Carolina										
Cedar Island	0.00	\$0.00	0.00	\$0.00	12,498.77	\$389,171.21	0.00	\$0.00	1,997.55	14,496.32
Currituck	0.00	\$0.00	0.00	\$0.00	3,762.61	\$8,689,434.00	225.76	\$120,000.00	4,335.52	8,323.89
FSA Interest NC ***	0.00	\$0.00	0.00	\$0.00	0.00	\$0.00	0.00	\$0.00	7,336.58	7,336.58
Great Dismal Swamp (16)	0.00	\$0.00	0.00	\$0.00	2,790.60	\$3,155,540.00	0.00	\$1.00	24,811.80	27,602.40
Mackay Island (16)	0.00	\$0.00	0.00	\$0.00	6,370.24	\$1,172,606.95	0.00	\$0.00	1,015.56	7,385.80
Mattamuskeet	0.00	\$0.00	0.00	\$0.00	252.04	\$1,285.35	0.00	\$0.00	49,921.89	50,173.93
Pea Island	0.00	\$0.00	0.00	\$0.00	5,787.97	\$40,401.86	0.00	\$0.00	46.40	5,834.37
Pee Dee	0.00	\$0.00	0.00	\$0.00	8,438.19	\$2,561,694.76	0.75	\$157.00	27.66	8,466.60
Pocosin Lakes	0.00	\$0.00	0.00	\$0.00	12,350.35	\$1,682,157.99	0.00	\$0.00	97,756.29	110,106.64
Roanoke River	0.00	\$0.00	0.00	\$0.00	15,692.43	\$8,338,258.00	0.00	\$0.00	4,870.00	20,562.43

Table 1. Migratory Bird Refuges

State and Unit	FISCAL YEAR MBCF ACQUISITION				CUMULATIVE TOTALS AT END OF FISCAL YEAR					
	Fee Title		Easement or Lease		MBCF				All Other Acres	Total Acres
	Acres	Cost	Acres	Cost	Acres	Cost	Acres	Cost		
North Carolina (Continued)										
Swanquarter	0.00	\$0.00	0.00	\$0.00	15,492.76	\$60,920.93	0.00	\$0.00	918.33	16,411.09
State Total 10	0.00	\$0.00	0.00	\$0.00	83,435.96	\$26,091,471.05	226.51	\$120,158.00	193,037.58	276,700.05
North Dakota										
Appert Lake	0.00	\$0.00	0.00	\$0.00	0.00	\$0.00	0.00	\$0.00	907.75	907.75
Ardoch	0.00	\$0.00	0.00	\$0.00	288.13	\$2,739.00	0.00	\$0.00	2,408.00	2,696.13
Arrowwood	0.00	\$0.00	0.00	\$0.00	2,097.51	\$46,906.58	0.00	\$0.00	13,845.35	15,942.86
Audubon	0.00	\$0.00	0.00	\$0.00	0.00	\$0.00	0.00	\$0.00	14,739.19	14,739.19
Bone Hill	0.00	\$0.00	0.00	\$0.00	0.00	\$0.00	0.00	\$0.00	640.00	640.00
Brumba	0.00	\$0.00	0.00	\$0.00	0.00	\$0.00	0.00	\$0.00	1,977.48	1,977.48
Buffalo Lake	0.00	\$0.00	0.00	\$0.00	0.00	\$0.00	0.00	\$0.00	1,563.72	1,563.72
Camp Lake	0.00	\$0.00	0.00	\$0.00	0.00	\$0.00	0.00	\$0.00	584.70	584.70
Canfield Lake	0.00	\$0.00	0.00	\$0.00	3.10	\$100.00	0.00	\$0.00	310.13	313.23
Chase Lake	0.00	\$0.00	0.00	\$0.00	4,449.47	\$25,611.00	0.00	\$0.00	0.00	4,449.47
Cottonwood Lake	0.00	\$0.00	0.00	\$0.00	0.00	\$0.00	0.00	\$0.00	1,013.47	1,013.47
Dakota Grassland	0.00	\$0.00	0.00	\$0.00	0.00	\$0.00	0.00	\$0.00	51,765.32	51,765.32
Dakota Lake	0.00	\$0.00	0.00	\$0.00	0.00	\$0.00	0.00	\$0.00	2,799.78	2,799.78
Des Lacs	0.00	\$0.00	0.00	\$0.00	631.63	\$6,893.60	2.70	\$0.00	18,912.81	19,547.14
Florence Lake	0.00	\$0.00	0.00	\$0.00	1,468.40	\$31,485.00	0.00	\$0.00	419.80	1,888.20
FSA Interest ND ***	0.00	\$0.00	0.00	\$0.00	0.00	\$0.00	0.00	\$0.00	4,750.20	4,750.20
Half-way Lake	0.00	\$0.00	0.00	\$0.00	0.00	\$0.00	160.00	\$0.00	0.00	160.00
Hiddenwood	0.00	\$0.00	0.00	\$0.00	0.00	\$0.00	568.35	\$0.00	0.00	568.35
Hobart Lake	0.00	\$0.00	0.00	\$0.00	236.49	\$5,165.00	0.00	\$0.00	1,840.61	2,077.10
Hutchinson Lake	0.00	\$0.00	0.00	\$0.00	0.00	\$0.00	0.00	\$0.00	478.90	478.90
J. Clark Salyer	0.00	\$0.00	0.00	\$0.00	21,643.29	\$306,352.60	50.52	\$0.00	37,660.65	59,354.46
Johnson Lake	0.00	\$0.00	0.00	\$0.00	0.00	\$0.00	0.00	\$0.00	2,007.91	2,007.91
Kellys Slough	0.00	\$0.00	0.00	\$0.00	0.00	\$0.00	0.00	\$0.00	1,269.50	1,269.50
Lake Alice	0.00	\$0.00	0.00	\$0.00	8,027.86	\$2,067,184.00	8.00	\$0.00	4,059.68	12,095.54
Lake George	0.00	\$0.00	0.00	\$0.00	0.00	\$0.00	0.00	\$0.00	3,118.81	3,118.81
Lake Ilo	0.00	\$0.00	0.00	\$0.00	3,178.30	\$78,582.98	0.00	\$0.00	854.82	4,033.12
Lake Nettie	0.00	\$0.00	0.00	\$0.00	2,420.60	\$148,245.00	0.00	\$0.00	634.30	3,054.90
Lake Otis	0.00	\$0.00	0.00	\$0.00	0.00	\$0.00	0.00	\$0.00	320.00	320.00
Lake Patricia	0.00	\$0.00	0.00	\$0.00	0.00	\$0.00	0.00	\$0.00	800.23	800.23
Lake Zahl	0.00	\$0.00	0.00	\$0.00	3,178.98	\$53,275.00	0.00	\$0.00	644.21	3,823.19
Lambs Lake	0.00	\$0.00	0.00	\$0.00	0.00	\$0.00	0.00	\$0.00	1,206.67	1,206.67
Little Goose	0.00	\$0.00	0.00	\$0.00	0.00	\$0.00	0.00	\$0.00	288.41	288.41
Long Lake	0.00	\$0.00	0.00	\$0.00	12,578.82	\$77,180.00	217.35	\$10.00	9,702.33	22,498.50
Lords Lake	0.00	\$0.00	0.00	\$0.00	0.00	\$0.00	0.00	\$0.00	1,915.29	1,915.29
Lost Lake	0.00	\$0.00	0.00	\$0.00	0.00	\$0.00	0.00	\$0.00	960.21	960.21
Lostwood	0.00	\$0.00	0.00	\$0.00	3,148.01	\$24,553.00	0.00	\$0.00	24,440.57	27,588.58
Maple River	0.00	\$0.00	0.00	\$0.00	0.00	\$0.00	0.00	\$0.00	712.00	712.00
McLean	0.00	\$0.00	0.00	\$0.00	344.00	\$12,516.00	0.00	\$0.00	416.00	760.00
Pleasant Lake	0.00	\$0.00	0.00	\$0.00	0.00	\$0.00	0.00	\$0.00	897.80	897.80
Pretty Rock	0.00	\$0.00	0.00	\$0.00	0.00	\$0.00	0.00	\$0.00	800.00	800.00
Rabb Lake	0.00	\$0.00	0.00	\$0.00	0.00	\$0.00	0.00	\$0.00	260.80	260.80
Rock Lake	0.00	\$0.00	0.00	\$0.00	0.00	\$0.00	0.00	\$0.00	5,665.96	5,665.96
Rose Lake	0.00	\$0.00	0.00	\$0.00	0.00	\$0.00	0.00	\$0.00	836.30	836.30
School Section Lake	0.00	\$0.00	0.00	\$0.00	0.00	\$0.00	0.00	\$0.00	297.30	297.30
Shell Lake	0.00	\$0.00	0.00	\$0.00	710.20	\$17,902.00	0.00	\$0.00	1,124.90	1,835.10
Sheyenne Lake	0.00	\$0.00	0.00	\$0.00	0.00	\$0.00	0.00	\$0.00	797.30	797.30
Sibley Lake	0.00	\$0.00	0.00	\$0.00	0.00	\$0.00	0.00	\$0.00	1,077.40	1,077.40
Silver Lake	0.00	\$0.00	0.00	\$0.00	0.00	\$0.00	0.00	\$0.00	3,347.64	3,347.64
Slade	0.00	\$0.00	0.00	\$0.00	0.00	\$0.00	0.00	\$0.00	3,000.20	3,000.20
Snyder Lake	0.00	\$0.00	0.00	\$0.00	0.00	\$0.00	0.00	\$0.00	1,550.18	1,550.18
Springwater	0.00	\$0.00	0.00	\$0.00	0.00	\$0.00	0.00	\$0.00	640.00	640.00
Stewart Lake	0.00	\$0.00	0.00	\$0.00	0.00	\$0.00	0.00	\$0.00	2,230.40	2,230.40
Stoney Slough	0.00	\$0.00	0.00	\$0.00	0.00	\$0.00	0.00	\$0.00	880.00	880.00
Storm Lake	0.00	\$0.00	0.00	\$0.00	0.00	\$0.00	0.00	\$0.00	685.90	685.90
Stump Lake	0.00	\$0.00	0.00	\$0.00	0.00	\$0.00	0.00	\$0.00	27.39	27.39
Sunburst Lake	0.00	\$0.00	0.00	\$0.00	0.00	\$0.00	0.00	\$0.00	327.51	327.51
Tewaukon	0.00	\$0.00	0.00	\$0.00	6,790.23	\$460,122.00	0.00	\$0.00	1,573.39	8,363.62
Tomahawk	0.00	\$0.00	0.00	\$0.00	0.00	\$0.00	0.00	\$0.00	440.00	440.00

Table 1. Migratory Bird Refuges

State and Unit	FISCAL YEAR MBCF ACQUISITION				CUMULATIVE TOTALS AT END OF FISCAL YEAR					
	Fee Title		Easement or Lease		MBCF				All Other Acres	Total Acres
	Acres	Cost	Acres	Cost	Fee Title		Easement or Lease			
				Acres	Cost	Acres	Cost			
North Dakota (Continued)										
Upper Souris	0.00	\$0.00	0.00	\$0.00	2,939.17	\$41,220.00	3.76	\$0.00	29,359.32	32,302.25
White Lake	0.00	\$0.00	0.00	\$0.00	1,040.00	\$28,800.00	0.00	\$0.00	0.00	1,040.00
Wild Rice Lake	0.00	\$0.00	0.00	\$0.00	0.00	\$0.00	0.00	\$0.00	778.80	778.80
Willow Lake	0.00	\$0.00	0.00	\$0.00	0.00	\$0.00	0.00	\$0.00	2,620.38	2,620.38
Wintering River	0.00	\$0.00	0.00	\$0.00	0.00	\$0.00	0.00	\$0.00	239.26	239.26
Wood Lake	0.00	\$0.00	0.00	\$0.00	0.00	\$0.00	0.00	\$0.00	280.00	280.00
State Total	63	\$0.00	\$0.00	\$0.00	75,174.19	\$3,434,832.76	1,010.68	\$10.00	269,706.93	345,891.80
Ohio										
Cedar Point	0.00	\$0.00	0.00	\$0.00	0.00	\$0.00	0.00	\$0.00	2,449.77	2,449.77
FSA Interest OH	***	0.00	\$0.00	0.00	\$0.00	0.00	\$0.00	0.00	5.00	5.00
Ottawa	0.00	\$0.00	0.00	\$0.00	5,172.11	\$2,572,893.55	590.80	\$2.00	1,110.46	6,873.37
West Sister Island	0.00	\$0.00	0.00	\$0.00	0.00	\$0.00	0.00	\$0.00	80.13	80.13
State Total	3	\$0.00	\$0.00	\$0.00	5,172.11	\$2,572,893.55	590.80	\$2.00	3,645.36	9,408.27
Oklahoma										
Deep Fork	0.00	\$0.00	0.00	\$0.00	1,571.50	\$421,000.00	0.00	\$0.00	8,302.01	9,873.51
Little River	0.00	\$0.00	0.00	\$0.00	12,262.16	\$9,881,540.94	0.00	\$0.00	1,748.42	14,010.58
Optima	0.00	\$0.00	0.00	\$0.00	0.00	\$0.00	0.00	\$0.00	4,332.81	4,332.81
Salt Plains	0.00	\$0.00	0.00	\$0.00	1,117.39	\$50,837.00	0.00	\$0.00	31,079.92	32,197.31
Sequoyah	0.00	\$0.00	0.00	\$0.00	0.00	\$0.00	0.00	\$0.00	20,800.00	20,800.00
Tishomingo	0.00	\$0.00	0.00	\$0.00	0.00	\$0.00	0.00	\$0.00	16,464.18	16,464.18
Washita	0.00	\$0.00	0.00	\$0.00	0.00	\$0.00	0.00	\$1.00	8,075.37	8,075.37
State Total	7	\$0.00	\$0.00	\$0.00	14,951.05	\$10,353,377.94	0.00	\$1.00	90,802.71	105,753.76
Oregon										
Ankeny	0.00	\$0.00	0.00	\$0.00	2,796.33	\$893,600.00	0.00	\$0.00	0.00	2,796.33
Baskett Slough	0.00	\$0.00	0.00	\$0.00	2,492.33	\$941,985.00	0.00	\$0.00	0.00	2,492.33
Cape Meares	0.00	\$0.00	0.00	\$0.00	0.00	\$0.00	0.00	\$0.00	138.51	138.51
Cold Springs	0.00	\$0.00	0.00	\$0.00	386.88	\$2,760.00	0.00	\$0.00	2,729.95	3,116.83
Deer Flat	(21)*	0.00	\$0.00	0.00	0.00	\$0.00	0.00	\$0.00	220.57	220.57
FSA Interest OR	***	0.00	\$0.00	0.00	0.00	\$0.00	0.00	\$0.00	1,421.22	1,421.22
Hart Mountain	0.00	\$0.00	0.00	\$0.00	54,837.26	\$216,114.58	0.00	\$0.00	216,409.67	271,246.93
Klamath Marsh	415.32	\$416,000.00	0.00	\$0.00	18,704.18	\$2,486,694.00	0.00	\$0.00	22,341.00	41,045.18
Lewis and Clark	0.00	\$0.00	0.00	\$0.00	2,850.63	\$469,250.00	0.00	\$0.00	9,324.62	12,175.25
Lower Klamath	(2)*	0.00	\$0.00	0.00	0.00	\$0.00	0.00	\$0.00	6,618.13	6,618.13
Malheur	0.00	\$0.00	0.00	\$0.00	48,305.48	\$2,474,615.75	0.00	\$0.00	138,861.36	187,166.84
McNary	*	0.00	\$0.00	0.00	0.00	\$0.00	0.00	\$0.00	1,185.10	1,185.10
Nestucca Bay	0.00	\$0.00	0.00	\$0.00	20.81	\$105,000.00	0.00	\$0.00	1,171.69	1,192.50
Oregon Islands	0.00	\$0.00	0.00	\$0.00	0.00	\$0.00	0.00	\$0.00	759.42	759.42
Sheldon	(15)*	0.00	\$0.00	0.00	627.48	\$4,079.00	0.00	\$0.00	0.00	627.48
Umatilla	(26)	0.00	\$0.00	0.00	0.00	\$0.00	0.00	\$0.00	8,907.37	8,907.37
Upper Klamath	0.00	\$0.00	0.00	\$0.00	4,146.10	\$123,476.00	0.00	\$0.00	18,951.58	23,097.68
Wapato Lake	0.00	\$0.00	0.00	\$0.00	504.40	\$2,754,296.00	0.80	\$4,375.00	439.16	944.36
William L. Finley	0.00	\$0.00	0.00	\$0.00	5,697.06	\$2,600,006.00	8.94	\$6,797.00	0.00	5,706.00
State Total	14	415.32	\$416,000.00	\$0.00	141,368.94	\$13,071,876.33	9.74	\$11,172.00	429,479.35	570,858.03
Pennsylvania										
Erie	0.00	\$0.00	0.00	\$0.00	7,962.81	\$911,480.12	0.00	\$0.00	852.42	8,815.23
John Heinz	0.00	\$0.00	0.00	\$0.00	80.33	\$20,966.00	0.00	\$0.00	912.84	993.17
State Total	2	\$0.00	\$0.00	\$0.00	8,043.14	\$932,446.12	0.00	\$0.00	1,765.26	9,808.40
Rhode Island										
Block Island	0.00	\$0.00	0.00	\$0.00	0.00	\$0.00	0.00	\$0.00	132.72	132.72
John H. Chafee	0.00	\$0.00	0.00	\$0.00	0.00	\$0.00	0.00	\$0.00	550.42	550.42
Ninigret	0.00	\$0.00	0.00	\$0.00	0.00	\$0.00	0.00	\$0.00	868.40	868.40
Sachuest Point	0.00	\$0.00	0.00	\$0.00	0.00	\$0.00	0.00	\$0.00	241.90	241.90
Trustom Pond	0.00	\$0.00	0.00	\$0.00	0.00	\$0.00	0.00	\$0.00	777.30	777.30
State Total	5	\$0.00	\$0.00	\$0.00	0.00	\$0.00	0.00	\$0.00	2,570.74	2,570.74
South Carolina										
Cape Romain	0.00	\$0.00	0.00	\$0.00	22,204.29	\$17,218.18	0.00	\$0.00	44,058.45	66,262.74
Carolina Sandhills	0.00	\$0.00	0.00	\$0.00	580.20	\$38,352.75	0.00	\$0.00	45,346.09	45,926.29
FSA Interest SC	***	0.00	\$0.00	0.00	0.00	\$0.00	0.00	\$0.00	1,783.13	1,783.13
Pinckney Island	0.00	\$0.00	0.00	\$0.00	0.00	\$0.00	0.00	\$0.00	4,052.70	4,052.70
Santee	0.00	\$0.00	0.00	\$0.00	4,322.43	\$549,953.57	0.00	\$0.00	8,308.98	12,631.41
Savannah	(1)*	0.00	\$0.00	0.00	7,991.40	\$1,554,443.30	0.00	\$0.00	7,302.98	15,294.38

Table 1. Migratory Bird Refuges

State and Unit	FISCAL YEAR MBCF ACQUISITION				CUMULATIVE TOTALS AT END OF FISCAL YEAR					
	Fee Title		Easement or Lease		MBCF				All Other Acres	Total Acres
	Acres	Cost	Acres	Cost	Acres	Cost	Acres	Cost		
South Carolina (Continued)										
Tybee	0.00	\$0.00	0.00	\$0.00	0.00	\$0.00	0.00	\$0.00	100.00	100.00
Waccamaw	0.00	\$0.00	0.00	\$0.00	2,642.47	\$3,429,000.00	0.00	\$0.00	26,262.90	28,905.37
State Total	6	\$0.00	\$0.00	\$0.00	37,740.79	\$5,588,967.80	0.00	\$0.00	137,215.23	174,956.02
South Dakota										
Bear Butte	0.00	\$0.00	0.00	\$0.00	0.00	\$0.00	0.00	\$0.00	374.20	374.20
Dakota Grassland	0.00	\$0.00	0.00	\$0.00	0.00	\$0.00	2,794.18	\$1,445,125.00	0.00	2,794.18
FSA Interest SD	***	\$0.00	0.00	\$0.00	0.00	\$0.00	0.00	\$0.00	151.00	151.00
Lacreek	0.00	\$0.00	0.00	\$0.00	9,379.75	\$768,491.00	80.00	\$35,933.00	7,395.58	16,855.33
Lake Andes	0.00	\$0.00	0.00	\$0.00	617.64	\$92,322.00	0.00	\$0.00	5,021.79	5,639.43
Sand Lake	0.00	\$0.00	0.00	\$0.00	3,917.39	\$90,622.00	0.00	\$0.00	17,902.80	21,820.19
Waubay	0.00	\$0.00	0.00	\$0.00	683.77	\$23,838.00	90.53	\$0.00	3,965.92	4,740.22
State Total	5	\$0.00	\$0.00	\$0.00	14,598.55	\$975,273.00	2,964.71	\$1,481,058.00	34,811.29	52,374.55
Tennessee										
Chickasaw	0.00	\$0.00	0.00	\$0.00	15,637.96	\$18,331,568.72	0.00	\$0.00	10,880.95	26,518.91
Cross Creeks	0.00	\$0.00	0.00	\$0.00	87.64	\$26,200.00	0.00	\$0.00	8,773.85	8,861.49
FSA Interest TN	***	\$0.00	0.00	\$0.00	0.00	\$0.00	0.00	\$0.00	685.40	685.40
Hatchie	0.00	\$0.00	0.00	\$0.00	11,220.73	\$1,862,329.25	0.00	\$0.00	335.37	11,556.10
Lake Isom	0.00	\$0.00	0.00	\$0.00	344.65	\$27,290.72	0.00	\$0.00	1,513.73	1,858.38
Lower Hatchie	0.00	\$0.00	0.00	\$0.00	8,889.46	\$12,854,392.00	0.00	\$0.00	4,906.33	13,795.79
Reelfoot (22)*	0.00	\$0.00	0.00	\$0.00	496.53	\$109,531.78	0.00	\$0.00	7,914.17	8,410.70
Tennessee	0.00	\$0.00	0.00	\$0.00	430.45	\$72,151.10	0.00	\$0.00	50,929.01	51,359.46
State Total	6	\$0.00	\$0.00	\$0.00	37,107.42	\$33,283,463.57	0.00	\$0.00	85,938.81	123,046.23
Texas										
Anahuac	0.00	\$0.00	0.00	\$0.00	31,081.83	\$14,014,754.08	63.09	\$0.00	7,803.23	38,948.15
Aransas	0.00	\$0.00	0.00	\$0.00	49,235.68	\$1,833,531.80	0.00	\$0.00	66,088.73	115,324.41
Big Boggy	0.00	\$0.00	0.00	\$0.00	4,113.41	\$2,374,594.19	258.23	\$58,112.00	154.53	4,526.17
Brazoria	1,079.81	\$1,962,000.00	0.00	\$0.00	43,721.04	\$15,784,482.26	0.00	\$0.00	2,042.65	45,763.69
Buffalo Lake	0.00	\$0.00	0.00	\$0.00	0.00	\$0.00	0.00	\$0.00	7,664.16	7,664.16
FSA Interest TX	***	\$0.00	0.00	\$0.00	0.00	\$0.00	0.00	\$0.00	2,776.21	2,776.21
Hagerman	0.00	\$0.00	0.00	\$0.00	0.00	\$0.00	0.00	\$0.00	11,319.84	11,319.84
Laguna Atascosa	394.61	\$1,000,000.00	0.00	\$0.00	77,704.54	\$13,475,079.19	0.00	\$0.00	13,916.48	91,621.02
Little Sandy	0.00	\$0.00	0.00	\$0.00	0.00	\$0.00	3,802.00	\$0.00	0.00	3,802.00
Lower Rio Grande Valley	0.00	\$0.00	0.00	\$0.00	0.00	\$0.00	0.00	\$0.00	97,908.59	97,908.59
McFaddin	0.00	\$0.00	0.00	\$0.00	51,112.55	\$10,956,489.20	7,748.88	\$1,394,170.00	0.00	58,861.43
Moody	0.00	\$0.00	0.00	\$0.00	0.00	\$0.00	3,516.87	\$0.00	0.00	3,516.87
Muleshoe	0.00	\$0.00	0.00	\$0.00	2,154.80	\$25,740.00	0.00	\$0.00	4,294.30	6,449.10
San Bernard	0.00	\$0.00	0.00	\$0.00	46,982.77	\$34,783,627.07	2.32	\$1.00	15,627.66	62,612.75
Santa Ana	0.00	\$0.00	0.00	\$0.00	1,980.50	\$23,766.00	0.00	\$0.00	107.00	2,087.50
Texas Point	0.00	\$0.00	0.00	\$0.00	8,952.02	\$1,719,000.00	0.00	\$0.00	0.00	8,952.02
Trinity River	10.94	\$10,600.00	0.00	\$0.00	16,345.78	\$13,611,756.99	4.02	\$3,857.54	12,849.70	29,199.50
State Total	16	\$1,485.36	\$2,972,600.00	\$0.00	333,384.92	\$108,602,820.78	15,395.41	\$1,456,140.54	242,553.08	591,333.41
Utah										
Bear River	0.00	\$0.00	0.00	\$0.00	28,439.11	\$10,385,049.47	45.76	\$740.00	48,617.12	77,101.99
Fish Springs	0.00	\$0.00	0.00	\$0.00	3,774.82	\$93,325.00	0.00	\$73.00	14,217.42	17,992.24
FSA Interest UT	***	\$0.00	0.00	\$0.00	0.00	\$0.00	0.00	\$0.00	442.52	442.52
Ouray	0.00	\$0.00	0.00	\$0.00	5,014.98	\$461,084.25	1,139.86	\$501,793.15	3,116.90	9,271.74
State Total	3	\$0.00	\$0.00	\$0.00	37,228.91	\$10,939,458.72	1,185.62	\$502,606.15	66,393.96	104,808.49
Vermont										
FSA Interest VT	***	\$0.00	0.00	\$0.00	0.00	\$0.00	0.00	\$0.00	71.00	71.00
Missisquoi	0.00	\$0.00	0.00	\$0.00	6,324.65	\$582,134.27	0.00	\$0.00	905.04	7,229.69
Silvio O. Conte (43)	0.00	\$0.00	0.00	\$0.00	17,189.21	\$4,337,574.00	0.00	\$0.00	9,697.37	26,886.58
State Total	2	\$0.00	\$0.00	\$0.00	23,513.86	\$4,919,708.27	0.00	\$0.00	10,673.41	34,187.27
Virginia										
Back Bay	0.00	\$0.00	0.00	\$0.00	7,482.09	\$5,160,662.00	0.00	\$0.00	1,693.62	9,175.71
Chincoteague (23)	0.00	\$0.00	0.00	\$0.00	9,513.02	\$635,403.91	0.00	\$0.00	4,101.66	13,614.68
Eastern Shore of Virginia	0.00	\$0.00	0.00	\$0.00	522.50	\$1,844,370.00	0.00	\$0.00	920.03	1,442.53
Fisherman Island	0.00	\$0.00	0.00	\$0.00	825.00	\$1,600,000.00	0.00	\$0.00	1,071.30	1,896.30
FSA Interest VA	***	\$0.00	0.00	\$0.00	0.00	\$0.00	0.00	\$0.00	133.70	133.70
Great Dismal Swamp (24)*	0.00	\$0.00	0.00	\$0.00	3,128.95	\$4,233,762.98	0.00	\$0.00	82,196.69	85,325.64
Mackay Island (24)*	0.00	\$0.00	0.00	\$0.00	874.40	\$26,855.75	0.00	\$0.00	7.74	882.14
Martin (23)*	0.00	\$0.00	0.00	\$0.00	0.00	\$0.00	0.00	\$0.00	145.62	145.62

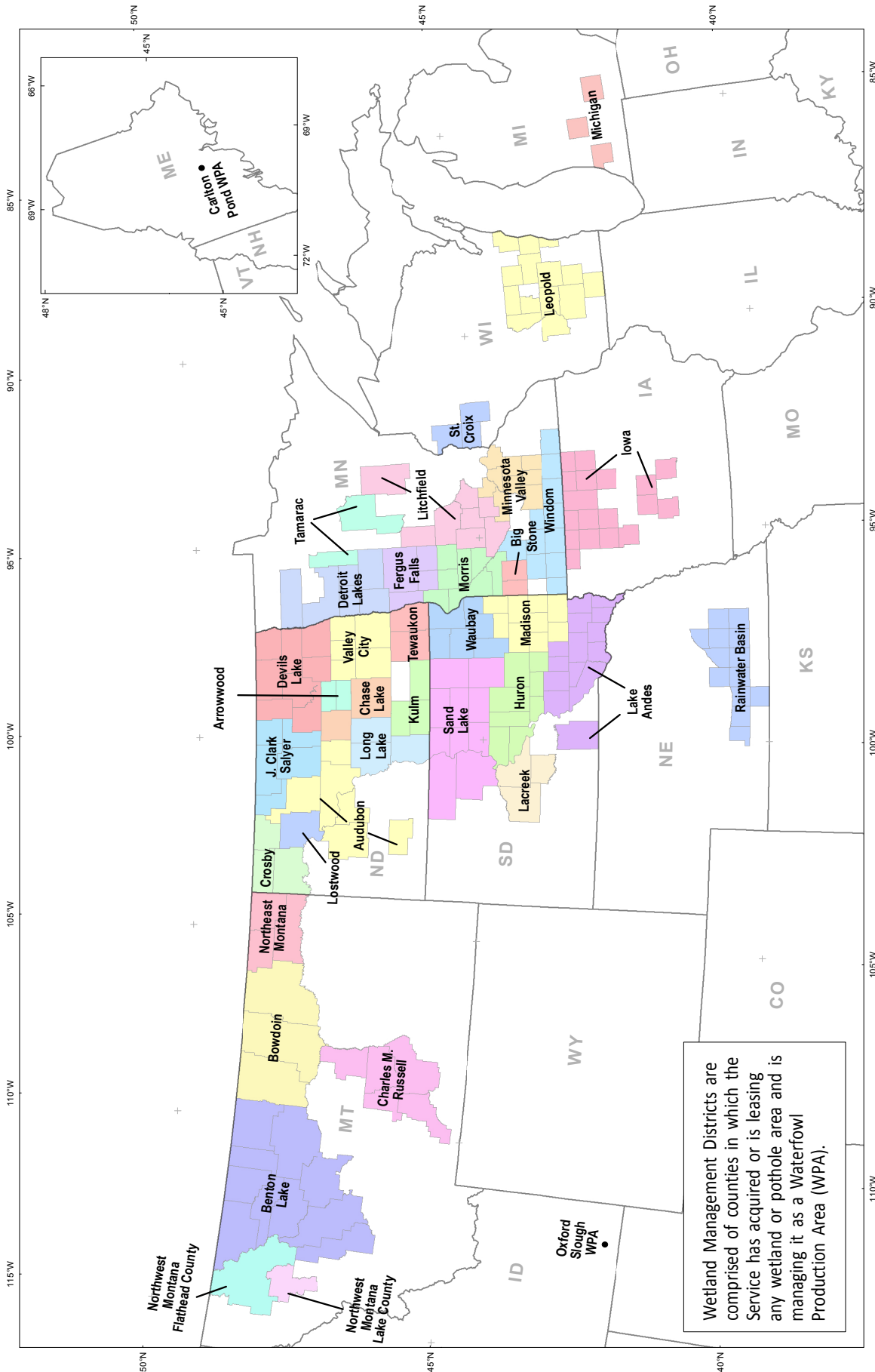
Table 1. Migratory Bird Refuges

State and Unit	FISCAL YEAR MBCF ACQUISITION				CUMULATIVE TOTALS AT END OF FISCAL YEAR						
	Fee Title		Easement or Lease		MBCF				All Other Acres	Total Acres	
	Acres	Cost	Acres	Cost	Acres	Cost	Acres	Cost			
Virginia (Continued)											
Nansemond	0.00	\$0.00	0.00	\$0.00	0.00	\$0.00	0.00	\$0.00	422.99	422.99	
Occoquan Bay	0.00	\$0.00	0.00	\$0.00	0.00	\$0.00	0.00	\$0.00	642.07	642.07	
Plum Tree Island	0.00	\$0.00	0.00	\$0.00	0.00	\$0.00	0.00	\$0.00	3,501.68	3,501.68	
Presquile	0.00	\$0.00	0.00	\$0.00	0.00	\$0.00	0.00	\$0.00	1,328.92	1,328.92	
Rappahannock River Valley	0.00	\$0.00	0.00	\$0.00	1,287.30	\$2,270,200.00	123.40	\$585,001.00	7,308.72	8,719.42	
Wallops Island	0.00	\$0.00	0.00	\$0.00	0.00	\$0.00	0.00	\$0.00	373.00	373.00	
State Total	10	0.00	\$0.00	0.00	\$0.00	23,633.26	\$15,771,254.64	123.40	\$585,001.00	103,847.74	127,604.40
Washington											
Billy Frank Jr. Nisqually	186.19	\$787,187.05	6.57	\$27,777.10	2,680.43	\$4,649,177.22	7.12	\$30,777.10	2,085.05	4,772.60	
Columbia	285.46	\$0.00	0.00	\$0.00	11,647.23	\$426,346.04	0.00	\$0.00	16,906.77	28,554.00	
Conboy Lake	0.00	\$0.00	0.00	\$0.00	5,964.96	\$2,289,100.00	718.29	\$400,000.00	388.45	7,071.70	
FSA Interest WA ***	0.00	\$0.00	0.00	\$0.00	0.00	\$0.00	0.00	\$0.00	1,596.39	1,596.39	
Little Pend Oreille	0.00	\$0.00	0.00	\$0.00	4,216.65	\$27,414.00	0.00	\$0.00	38,376.92	42,593.57	
McNary	0.00	\$0.00	0.00	\$0.00	185.16	\$865.00	0.00	\$0.00	14,481.23	14,666.39	
Pierce	0.00	\$0.00	0.00	\$0.00	0.00	\$0.00	0.00	\$0.00	329.38	329.38	
Ridgefield	0.00	\$0.00	0.00	\$0.00	4,670.16	\$4,033,600.00	1.74	\$21.00	556.34	5,228.24	
Saddle Mountain	0.00	\$0.00	0.00	\$0.00	0.00	\$0.00	0.00	\$0.00	161,485.93	161,485.93	
San Juan Islands	0.00	\$0.00	0.00	\$0.00	0.00	\$0.00	0.00	\$0.00	448.50	448.50	
Steigerwald Lake	0.00	\$0.00	0.00	\$0.00	50.00	\$500,000.00	0.00	\$0.00	996.02	1,046.02	
Toppenish	0.00	\$0.00	0.00	\$0.00	1,762.80	\$599,137.00	1.29	\$0.00	214.75	1,978.84	
Turnbull	0.00	\$0.00	0.00	\$0.00	14,617.70	\$1,509,411.38	0.00	\$0.00	4,812.01	19,429.71	
Umatilla (4)*	0.00	\$0.00	0.00	\$0.00	0.00	\$0.00	0.00	\$0.00	14,875.83	14,875.83	
Willapa	0.00	\$0.00	0.00	\$0.00	8,616.42	\$5,122,010.74	0.12	\$0.00	8,335.69	16,952.23	
State Total	13	471.65	\$787,187.05	6.57	\$27,777.10	54,411.51	\$19,157,061.38	728.56	\$430,798.10	265,889.26	321,029.33
West Virginia											
Canaan Valley	0.00	\$0.00	0.00	\$0.00	683.79	\$2,296,884.98	0.00	\$0.00	15,929.65	16,613.44	
FSA Interest WV ***	0.00	\$0.00	0.00	\$0.00	0.00	\$0.00	0.00	\$0.00	8.37	8.37	
State Total	1	0.00	\$0.00	0.00	\$0.00	683.79	\$2,296,884.98	0.00	\$0.00	15,938.02	16,621.81
Wisconsin											
FSA Interest WI ***	0.00	\$0.00	0.00	\$0.00	0.00	\$0.00	0.00	\$0.00	6,126.70	6,126.70	
Horicon	0.00	\$0.00	0.00	\$0.00	21,098.37	\$555,238.34	29.00	\$356.00	286.59	21,413.96	
Necedah	0.00	\$0.00	0.00	\$0.00	244.92	\$3,194.26	0.00	\$0.00	43,470.94	43,715.86	
Trempealeau	0.00	\$0.00	0.00	\$0.00	593.89	\$0.00	0.00	\$0.00	5,825.04	6,418.93	
State Total	3	0.00	\$0.00	0.00	\$0.00	21,937.18	\$558,432.60	29.00	\$356.00	55,709.27	77,675.45
Wyoming											
Bamforth	0.00	\$0.00	0.00	\$0.00	964.80	\$6,368.00	0.00	\$0.00	201.23	1,166.03	
Cokeville Meadows	0.00	\$0.00	0.00	\$0.00	4,738.89	\$2,101,412.61	320.00	\$36,037.42	4,200.43	9,259.32	
FSA Interest WY ***	0.00	\$0.00	0.00	\$0.00	0.00	\$0.00	0.00	\$0.00	3,287.75	3,287.75	
Hutton Lake	0.00	\$0.00	0.00	\$0.00	1,815.49	\$7,944.00	0.00	\$0.00	154.85	1,970.34	
Pathfinder	0.00	\$0.00	0.00	\$0.00	0.00	\$0.00	0.00	\$0.00	16,806.90	16,806.90	
Seedskaadee	0.00	\$0.00	0.00	\$0.00	0.00	\$0.00	0.00	\$0.00	27,235.22	27,235.22	
State Total	5	0.00	\$0.00	0.00	\$0.00	7,519.18	\$2,115,724.61	320.00	\$36,037.42	51,886.38	59,725.56
Grand Total	372	6,042.34	\$1,128,233.05	324.85	\$1,006,377.10	2,405,028.44	\$629,259,740.55	135,758.46	\$99,866,997.44	7,823,022.26	10,363,809.16

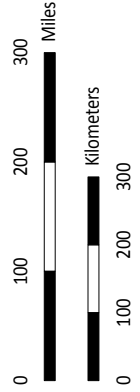
- | | | |
|---|--|---|
| (1) Also in Georgia | (16) Also in Virginia | (36) Also in New Hampshire |
| (2) " " California | (17) " " New Mexico | (37) " " Maine |
| (3) " " Arizona | (18) " " Illinois, Iowa, and Wisconsin | (38) " " West Virginia and Pennsylvania |
| (4) " " Oregon | (19) " " Iowa | (39) " " New York |
| (5) " " Alabama | (20) " " South Dakota | (40) " " New Jersey |
| (6) " " Florida | (21) " " Idaho | (41) " " New Hampshire and Vermont |
| (7) " " South Carolina | (22) " " Kentucky | (42) " " Massachusetts and Vermont |
| (8) " " Missouri | (23) " " Maryland | (43) " " Massachusetts and New Hampshire |
| (9) " " Iowa, Minnesota, and Wisconsin | (24) " " North Carolina | |
| (10) " " Nebraska | (25) " " Illinois, Iowa, and Minnesota | * - Counted in another state |
| (11) " " Illinois | (26) " " Washington | ** - Denotes interests transferred by the FSA |
| (12) " " Texas | (27) " " Mississippi | FSA - Farm Service Agency (formerly Farmers Home Administration, Department of Agriculture) |
| (13) " " Illinois, Minnesota, and Wisconsin | (28) " " Louisiana | |
| (14) " " Tennessee | (34) " " West Virginia and Kentucky | |
| (15) " " Nevada | (35) " " Pennsylvania and Kentucky | |

Negative numbers in the *Fiscal Year MBCF Acquisition* acreage totals reflect acres disposed through land-for-land exchanges, where the Service exchanged previously acquired refuge lands for other lands with superior wildlife habitat values. Exchanges also help to consolidate land holdings and improve land management efficiency.

Wetland Management Districts Map



Wetland Management Districts are comprised of counties in which the Service has acquired or is leasing any wetland or pothole area and is managing it as a Waterfowl Production Area (WPA).



PRODUCED IN THE DIVISION OF REALTY
FALLS CHURCH, VA
LAND STATUS CURRENT TO: 9/30/2016
BASEMAP: ESRI
ALBERS PROJECTION (USGS)
MAP NAME: WMDSFY17.pdf

Table 2. Waterfowl Production Areas

State and Unit	FISCAL YEAR MBCF ACQUISITION				CUMULATIVE TOTALS AT END OF FISCAL YEAR					
	Fee Title		Easement or Lease		MBCF				All Other Acres	Total Acres
	Acres	Cost	Acres	Cost	Fee Title		Easement or Lease			
				Acres	Cost	Acres	Cost			
Idaho										
Oxford Slough WPA	0.00	\$0.00	0.00	\$0.00	1,878.41	\$530,000.00	0.00	\$0.00	0.00	1,878.41
<i>WPA Total:</i> 1	<i>0.00</i>	<i>\$0.00</i>	<i>0.00</i>	<i>\$0.00</i>	<i>1,878.41</i>	<i>\$530,000.00</i>	<i>0.00</i>	<i>\$0.00</i>	<i>0.00</i>	<i>1,878.41</i>
State Total 1	0.00	\$0.00	0.00	\$0.00	1,878.41	\$530,000.00	0.00	\$0.00	0.00	1,878.41
Iowa										
<i>Iowa WMD</i>										
Boone	0.00	\$0.00	0.00	\$0.00	391.33	\$599,600.00	0.00	\$0.00	0.00	391.33
Buena Vista	0.00	\$0.00	0.00	\$0.00	69.09	\$169,000.00	0.00	\$0.00	0.00	69.09
Cerro Gordo	0.00	\$0.00	0.00	\$0.00	2,720.25	\$3,284,677.82	5.70	\$10,200.00	0.00	2,725.95
Clay	0.00	\$0.00	0.00	\$0.00	989.98	\$1,759,306.85	0.00	\$0.00	0.00	989.98
Dickinson	0.00	\$0.00	0.00	\$0.00	5,717.48	\$10,542,966.00	84.00	\$37,725.00	649.29	6,450.77
Emmet	0.00	\$0.00	0.00	\$0.00	2,055.04	\$3,965,475.00	16.00	\$40,000.00	249.99	2,321.03
Greene	0.00	\$0.00	0.00	\$0.00	1,133.43	\$3,305,500.00	0.00	\$0.00	0.00	1,133.43
Guthrie	0.00	\$0.00	0.00	\$0.00	302.53	\$609,740.00	0.00	\$0.00	0.00	302.53
Hancock	0.00	\$0.00	0.00	\$0.00	802.70	\$545,480.26	7.00	\$2,250.00	27.80	837.50
Kossuth	0.00	\$0.00	0.00	\$0.00	3,586.05	\$8,645,046.98	23.00	\$28,775.00	26.87	3,635.92
Osceola	0.00	\$0.00	0.00	\$0.00	0.00	\$0.00	37.00	\$17,250.00	4.00	41.00
Palo Alto	0.00	\$0.00	0.00	\$0.00	731.81	\$1,180,592.65	176.00	\$222,850.00	58.00	965.81
Pocahontas	0.00	\$0.00	0.00	\$0.00	654.16	\$1,716,400.00	0.00	\$0.00	0.00	654.16
Polk	0.00	\$0.00	0.00	\$0.00	110.00	\$241,500.00	0.00	\$0.00	0.00	110.00
Sac	0.00	\$0.00	0.00	\$0.00	930.45	\$2,493,280.00	0.00	\$0.00	168.09	1,098.54
Winnebago	0.00	\$0.00	0.00	\$0.00	1,116.51	\$1,465,700.31	105.00	\$54,025.00	0.00	1,221.51
Worth	0.00	\$0.00	0.00	\$0.00	1,491.84	\$1,088,329.87	18.00	\$9,250.00	6.66	1,516.50
Wright	0.00	\$0.00	0.00	\$0.00	1,845.72	\$3,945,725.00	0.00	\$0.00	0.00	1,845.72
<i>WMD Total:</i> 18	<i>0.00</i>	<i>\$0.00</i>	<i>0.00</i>	<i>\$0.00</i>	<i>24,648.37</i>	<i>\$45,558,320.74</i>	<i>471.70</i>	<i>\$422,325.00</i>	<i>1,190.70</i>	<i>26,310.77</i>
State Total 18	0.00	\$0.00	0.00	\$0.00	24,648.37	\$45,558,320.74	471.70	\$422,325.00	1,190.70	26,310.77
Maine										
Carlton Pond WPA	0.00	\$0.00	0.00	\$0.00	1,068.21	\$18,277.08	0.00	\$0.00	0.00	1,068.21
<i>WPA Total:</i> 1	<i>0.00</i>	<i>\$0.00</i>	<i>0.00</i>	<i>\$0.00</i>	<i>1,068.21</i>	<i>\$18,277.08</i>	<i>0.00</i>	<i>\$0.00</i>	<i>0.00</i>	<i>1,068.21</i>
State Total 1	0.00	\$0.00	0.00	\$0.00	1,068.21	\$18,277.08	0.00	\$0.00	0.00	1,068.21
Michigan										
<i>Michigan WMD</i>										
Barry	0.00	\$0.00	0.00	\$0.00	110.00	\$550,000.00	0.00	\$0.00	271.30	381.30
Jackson	0.00	\$0.00	0.00	\$0.00	160.00	\$170,000.00	0.00	\$0.00	500.21	660.21
Van Buren	0.00	\$0.00	0.00	\$0.00	77.08	\$43,600.00	0.00	\$0.00	317.32	394.40
<i>WMD Total:</i> 3	<i>0.00</i>	<i>\$0.00</i>	<i>0.00</i>	<i>\$0.00</i>	<i>347.08</i>	<i>\$763,600.00</i>	<i>0.00</i>	<i>\$0.00</i>	<i>1,088.83</i>	<i>1,435.91</i>
State Total 3	0.00	\$0.00	0.00	\$0.00	347.08	\$763,600.00	0.00	\$0.00	1,088.83	1,435.91
Minnesota										
Marshall WPA	0.00	\$0.00	0.00	\$0.00	510.00	\$400,400.00	0.00	\$0.00	0.00	510.00
<i>WPA Total:</i> 1	<i>0.00</i>	<i>\$0.00</i>	<i>0.00</i>	<i>\$0.00</i>	<i>510.00</i>	<i>\$400,400.00</i>	<i>0.00</i>	<i>\$0.00</i>	<i>0.00</i>	<i>510.00</i>
<i>Big Stone WMD</i>										
Lincoln	0.00	\$0.00	0.00	\$0.00	1,254.01	\$1,218,200.00	1,841.12	\$1,473,971.04	387.37	3,482.50
Lyon	0.00	\$0.00	0.00	\$0.00	1,791.22	\$2,042,220.00	509.62	\$392,555.00	150.69	2,451.53
<i>WMD Total:</i> 2	<i>0.00</i>	<i>\$0.00</i>	<i>0.00</i>	<i>\$0.00</i>	<i>3,045.23</i>	<i>\$3,260,420.00</i>	<i>2,350.74</i>	<i>\$1,866,526.04</i>	<i>538.06</i>	<i>5,934.03</i>
<i>Detroit Lakes WMD</i>										
Becker	0.00	\$0.00	-54.30	\$0.00	13,213.33	\$5,379,470.56	2,824.06	\$1,399,485.00	243.33	16,280.72
Clay	0.00	\$0.00	0.00	\$0.00	10,783.44	\$3,874,545.18	3,726.98	\$1,030,622.15	1,746.96	16,257.38
Mahnomen	0.00	\$0.00	0.00	\$0.00	6,087.33	\$1,183,558.90	5,244.22	\$464,361.00	1,131.00	12,462.55
Norman	0.00	\$0.00	0.00	\$0.00	1,120.00	\$400,000.00	0.00	\$0.00	463.88	1,583.88
Polk	0.00	\$0.00	0.00	\$0.00	13,163.66	\$3,124,752.86	2,398.34	\$800,386.34	446.29	16,008.29
<i>WMD Total:</i> 5	<i>0.00</i>	<i>\$0.00</i>	<i>-54.30</i>	<i>\$0.00</i>	<i>44,367.76</i>	<i>\$13,962,327.50</i>	<i>14,193.60</i>	<i>\$3,694,854.49</i>	<i>4,031.46</i>	<i>62,592.82</i>
<i>Fergus Falls WMD</i>										
Douglas	0.00	\$0.00	99.96	\$209,525.00	9,913.86	\$3,486,143.20	6,240.91	\$1,245,730.98	710.01	16,864.78
Grant	0.00	\$0.00	5.20	\$17,800.00	10,498.09	\$3,992,838.12	3,741.00	\$1,503,829.00	599.46	14,838.55
Otter Tail	0.00	\$0.00	647.02	\$1,129,500.00	22,710.34	\$10,517,352.26	17,244.98	\$6,956,512.25	1,435.65	41,390.97
Wilkin	0.00	\$0.00	0.00	\$0.00	2,432.80	\$900,064.35	309.00	\$93,750.00	95.10	2,836.90
<i>WMD Total:</i> 4	<i>0.00</i>	<i>\$0.00</i>	<i>752.18</i>	<i>\$1,356,825.00</i>	<i>45,555.09</i>	<i>\$18,896,397.93</i>	<i>27,535.89</i>	<i>\$9,799,822.23</i>	<i>2,840.22</i>	<i>75,931.20</i>
<i>Litchfield WMD</i>										
Aitkin	0.00	\$0.00	0.00	\$0.00	69.86	\$28,000.00	0.00	\$0.00	42.00	111.86

Table 2. Waterfowl Production Areas

State and Unit	FISCAL YEAR MBCF ACQUISITION				CUMULATIVE TOTALS AT END OF FISCAL YEAR					
	Fee Title		Easement or Lease		MBCF				All Other Acres	Total Acres
	Acres	Cost	Acres	Cost	Acres	Cost	Easement or Lease	Cost		
Minnesota (Continued)										
<i>Litchfield WMD</i>										
Kandiyohi	0.00	\$0.00	35.04	\$174,050.00	13,901.67	\$6,566,593.93	5,062.80	\$2,319,101.80	443.70	19,408.17
McLeod	0.00	\$0.00	12.70	\$41,200.00	1,720.79	\$3,646,793.00	1,124.16	\$1,312,744.90	132.22	2,977.17
Meeker	0.00	\$0.00	0.00	\$0.00	4,866.29	\$4,157,389.10	2,873.73	\$2,121,942.00	40.61	7,780.63
Renville	0.00	\$0.00	0.00	\$0.00	1,658.03	\$2,211,040.00	0.00	\$0.00	165.67	1,823.70
Stearns	0.00	\$0.00	155.59	\$424,925.00	9,175.07	\$3,127,833.87	1,758.40	\$1,159,585.70	354.61	11,288.08
Todd	0.00	\$0.00	0.00	\$0.00	802.85	\$385,672.20	42.58	\$17,480.00	0.00	845.43
Wright	0.00	\$0.00	0.00	\$0.00	3,044.57	\$6,276,520.90	444.87	\$246,500.00	142.80	3,632.24
WMD Total:	8	\$0.00	203.33	\$640,175.00	35,239.13	\$26,399,843.00	11,306.54	\$7,177,354.40	1,321.61	47,867.28
<i>Minnesota Valley WMD</i>										
Blue Earth	0.00	\$0.00	0.00	\$0.00	1,182.77	\$1,657,250.00	735.61	\$1,156,550.00	138.37	2,056.75
Carver	0.00	\$0.00	0.00	\$0.00	0.00	\$0.00	47.57	\$68,976.50	219.00	266.57
Dakota	0.00	\$0.00	0.00	\$0.00	73.90	\$201,747.00	0.00	\$0.00	11.05	84.95
Le Sueur	0.00	\$0.00	0.00	\$0.00	356.11	\$525,754.50	242.15	\$222,878.50	85.88	684.14
Rice	0.00	\$0.00	0.00	\$0.00	315.60	\$438,999.35	580.79	\$1,020,141.25	206.64	1,103.03
Scott	0.00	\$0.00	0.00	\$0.00	40.00	\$109,200.00	164.21	\$248,001.00	82.91	287.12
Sibley	0.00	\$0.00	0.00	\$0.00	793.52	\$1,007,681.32	267.01	\$234,415.00	199.36	1,259.89
Steele	0.00	\$0.00	0.00	\$0.00	650.11	\$833,744.00	0.00	\$0.00	16.59	666.70
Waseca	0.00	\$0.00	0.00	\$0.00	260.00	\$646,000.00	0.00	\$0.00	40.00	300.00
WMD Total:	9	\$0.00	0.00	\$0.00	3,672.01	\$5,420,376.17	2,037.34	\$2,950,962.25	999.80	6,709.15
<i>Morris WMD</i>										
Big Stone	353.52	\$855,800.00	-4.84	\$513,550.00	11,908.56	\$3,269,045.83	11,164.97	\$5,757,281.16	309.77	23,383.30
Chippewa	0.00	\$0.00	0.00	\$0.00	244.10	\$127,050.00	115.10	\$105,525.00	0.00	359.20
Lac Qui Parle	0.00	\$0.00	65.39	\$236,100.00	3,813.27	\$1,086,339.73	2,390.14	\$1,906,691.00	922.39	7,125.80
Pope	0.00	\$0.00	419.30	\$699,550.00	13,120.49	\$3,066,945.07	12,872.80	\$5,942,791.70	901.80	26,895.09
Stevens	0.00	\$0.00	24.49	\$103,875.00	9,552.66	\$3,463,001.64	1,267.36	\$490,390.00	338.93	11,158.95
Swift	0.00	\$0.00	0.00	\$0.00	7,635.58	\$1,860,080.17	2,194.97	\$1,028,119.40	597.14	10,427.69
Traverse	0.00	\$0.00	0.00	\$0.00	4,105.55	\$1,469,588.63	1,443.61	\$307,665.00	0.00	5,549.16
Yellow Medicine	0.00	\$0.00	0.00	\$0.00	1,082.68	\$879,683.30	1,273.77	\$963,152.40	332.00	2,688.45
WMD Total:	8	\$855,800.00	504.34	\$1,553,075.00	51,462.89	\$15,221,734.37	32,722.72	\$16,501,615.66	3,402.03	87,587.64
<i>Tamarac WMD</i>										
Cass	0.00	\$0.00	0.00	\$0.00	0.00	\$0.00	43.00	\$6,000.00	0.00	43.00
Clearwater	0.00	\$0.00	378.40	\$261,025.00	0.00	\$0.00	2,233.73	\$1,017,650.00	304.00	2,537.73
WMD Total:	2	\$0.00	378.40	\$261,025.00	0.00	\$0.00	2,276.73	\$1,023,650.00	304.00	2,580.73
<i>Windom WMD</i>										
Cottonwood	0.00	\$0.00	0.00	\$0.00	3,137.96	\$1,681,553.85	298.59	\$454,925.00	354.00	3,790.55
Faribault	0.00	\$0.00	0.00	\$0.00	830.06	\$800,991.80	129.37	\$110,775.00	80.00	1,039.43
Freeborn	0.00	\$0.00	0.00	\$0.00	2,139.90	\$3,289,117.25	132.99	\$161,650.00	290.61	2,563.50
Jackson	0.00	\$0.00	0.00	\$0.00	4,692.51	\$4,497,146.28	477.69	\$961,550.00	420.36	5,590.56
Martin	0.00	\$0.00	0.00	\$0.00	333.89	\$645,369.60	271.65	\$287,184.39	249.42	854.96
Mower	0.00	\$0.00	0.00	\$0.00	0.00	\$0.00	0.00	\$0.00	180.70	180.70
Murray	0.00	\$0.00	1.00	\$2,600.00	2,221.94	\$2,691,477.00	298.28	\$890,325.00	480.26	3,000.48
Nobles	0.00	\$0.00	0.00	\$0.00	643.40	\$1,098,202.00	26.00	\$15,600.00	0.00	669.40
Redwood	0.00	\$0.00	0.00	\$0.00	0.00	\$0.00	62.02	\$48,875.00	0.00	62.02
Rock	0.00	\$0.00	0.00	\$0.00	0.00	\$0.00	104.79	\$233,950.00	0.00	104.79
Watonwan	0.00	\$0.00	0.00	\$0.00	56.65	\$31,157.50	168.42	\$112,209.80	0.00	225.07
WMD Total:	11	\$0.00	1.00	\$2,600.00	14,056.31	\$14,735,015.28	1,969.80	\$3,277,044.19	2,055.35	18,081.46
State Total	50	\$855,800.00	1,784.95	\$3,813,700.00	197,908.42	\$98,296,514.25	94,393.36	\$46,291,829.26	15,492.53	307,794.31
Montana										
<i>Benton Lake WMD</i>										
Cascade	0.00	\$0.00	0.00	\$0.00	727.46	\$299,606.00	78.00	\$15,550.00	193.50	998.96
Chouteau	0.00	\$0.00	0.00	\$2,504.96	2,136.13	\$538,543.00	661.03	\$36,881.96	280.00	3,077.16
Glacier	0.00	\$0.00	0.00	\$0.00	94.20	\$17,898.00	10,146.83	\$953,495.00	96.50	10,337.53
Hill	0.00	\$0.00	0.00	\$2,800.00	0.00	\$0.00	918.00	\$99,533.00	378.93	1,296.93
Lewis and Clark	0.00	\$0.00	0.00	\$0.00	0.00	\$0.00	3,317.07	\$1,071,782.00	2,810.88	6,127.95
Liberty	0.00	\$0.00	0.00	\$0.00	0.00	\$0.00	428.00	\$14,100.00	0.00	428.00
Pondera	0.00	\$0.00	0.00	\$0.00	640.00	\$93,000.00	8,715.01	\$1,990,000.00	94.96	9,449.97
Powell	0.00	\$0.00	2.12	\$0.00	1,886.81	\$2,130,084.00	23,365.18	\$6,650,635.00	4,647.60	29,899.59

Table 2. Waterfowl Production Areas

State and Unit	FISCAL YEAR MBCF ACQUISITION				CUMULATIVE TOTALS AT END OF FISCAL YEAR						
	Fee Title		Easement or Lease		MBCF				All Other Acres	Total Acres	
	Acres	Cost	Acres	Cost	Acres	Cost	Easement or Lease	Cost			
Montana (Continued)											
<i>Benton Lake WMD</i>											
Teton *	0.00	\$0.00	0.00	\$0.00	1,486.05	\$376,253.00	5,413.13	\$241,818.00	921.64	7,820.82	
Toole	0.00	\$0.00	0.00	\$0.00	4,610.48	\$1,003,964.00	12,161.09	\$916,245.00	5.28	16,776.85	
WMD Total:	10	\$0.00	2.12	\$5,304.96	11,581.13	\$4,459,348.00	65,203.34	\$11,990,039.96	9,429.29	86,213.76	
<i>Bowdoin WMD</i>											
Blaine	0.00	\$0.00	687.00	\$103,800.00	2,435.26	\$167,340.00	9,770.44	\$1,194,195.00	12,197.00	24,402.70	
Phillips *	0.00	\$0.00	3,580.37	\$729,622.16	7,739.96	\$2,034,063.00	66,304.85	\$8,409,255.42	14,426.68	88,471.49	
Valley	0.00	\$0.00	0.00	\$0.00	0.00	\$0.00	2,080.00	\$350,260.00	30.00	2,110.00	
WMD Total:	3	\$0.00	4,267.37	\$833,422.16	10,175.22	\$2,201,403.00	78,155.29	\$9,953,710.42	26,653.68	114,984.19	
<i>Charles M. Russell WMD</i>											
Golden Valley	0.00	\$0.00	0.00	\$665.38	760.27	\$76,427.00	160.00	\$9,008.37	0.00	920.27	
Musselshell	0.00	\$0.00	0.00	\$2,080.00	532.45	\$163,001.00	160.00	\$19,435.20	0.00	692.45	
Petroleum	0.00	\$0.00	0.00	\$0.00	40.00	\$23,800.00	0.00	\$0.00	0.00	40.00	
Stillwater	0.00	\$0.00	0.00	\$0.00	1,828.10	\$207,625.00	0.00	\$0.00	0.38	1,828.48	
Yellowstone	0.00	\$0.00	0.00	\$0.00	486.42	\$55,600.00	0.00	\$0.00	0.00	486.42	
WMD Total:	5	\$0.00	0.00	\$2,745.38	3,647.24	\$526,453.00	320.00	\$28,443.57	0.38	3,967.62	
<i>NE Montana WMD</i>											
Daniels	0.00	\$0.00	0.00	\$0.00	1,080.58	\$97,669.00	472.65	\$41,125.00	546.52	2,099.75	
Roosevelt	0.00	\$0.00	0.00	\$0.00	179.20	\$14,000.00	7,402.42	\$392,500.00	0.00	7,581.62	
Sheridan	0.00	\$0.00	1,673.12	\$343,700.00	9,328.01	\$950,442.23	12,520.53	\$1,200,325.00	2,819.03	24,667.57	
WMD Total:	3	\$0.00	1,673.12	\$343,700.00	10,587.79	\$1,062,111.23	20,395.60	\$1,633,950.00	3,365.55	34,348.94	
<i>NW Montana - Flathead WMD</i>											
Flathead	0.00	\$0.00	0.00	\$0.00	4,410.31	\$2,246,518.00	0.00	\$0.00	1,138.55	5,548.86	
WMD Total:	1	\$0.00	0.00	\$0.00	4,410.31	\$2,246,518.00	0.00	\$0.00	1,138.55	5,548.86	
<i>NW Montana - Lake WMD</i>											
Lake *	0.00	\$0.00	0.00	\$0.00	1,480.86	\$1,460,555.00	4,131.61	\$3,103,430.00	1,949.14	7,561.61	
WMD Total:	1	\$0.00	0.00	\$0.00	1,480.86	\$1,460,555.00	4,131.61	\$3,103,430.00	1,949.14	7,561.61	
State Total	23	\$0.00	5,942.61	\$1,185,172.50	41,882.55	\$11,956,388.23	168,205.84	\$26,709,573.95	42,536.59	252,624.98	
Nebraska											
<i>Rainwater Basin WMD</i>											
Adams	0.00	\$0.00	0.00	\$0.00	160.00	\$110,000.00	0.00	\$11,316.89	234.56	394.56	
Clay	0.00	\$0.00	0.00	\$0.00	4,216.27	\$1,622,444.00	0.80	\$0.00	2,988.34	7,205.41	
Fillmore	0.00	\$0.00	0.00	\$0.00	2,937.60	\$1,142,453.00	6.60	\$24.00	638.90	3,583.10	
Franklin	0.00	\$0.00	0.00	\$0.00	1,625.96	\$402,698.00	0.00	\$0.00	319.24	1,945.20	
Gosper	0.00	\$0.00	0.00	\$0.00	1,451.50	\$233,923.00	0.00	\$0.00	0.00	1,451.50	
Hall *	0.00	\$0.00	0.00	\$0.00	328.77	\$433,000.00	0.00	\$0.00	320.70	649.47	
Hamilton *	0.00	\$0.00	0.00	\$0.00	400.00	\$407,450.00	0.00	\$5,899.02	785.17	1,185.17	
Kearney *	0.00	\$0.00	0.00	\$0.00	2,874.43	\$657,681.00	0.00	\$0.00	253.98	3,128.41	
Phelps	0.00	\$0.00	0.00	\$0.00	4,195.14	\$3,052,111.00	0.00	\$0.00	626.39	4,821.53	
Polk FSA **	0.00	\$0.00	0.00	\$0.00	0.00	\$0.00	0.00	\$0.00	140.78	140.78	
Saline FSA **	0.00	\$0.00	0.00	\$0.00	0.00	\$0.00	0.00	\$0.00	104.35	104.35	
Seward	0.00	\$0.00	0.00	\$0.00	278.67	\$101,746.45	0.00	\$0.00	342.31	620.98	
York *	0.00	\$0.00	0.00	\$0.00	679.20	\$194,429.00	0.00	\$0.00	372.86	1,052.06	
WMD Total:	11	\$0.00	0.00	\$0.00	19,147.54	\$8,357,935.45	7.40	\$17,239.91	7,127.58	26,282.52	
State Total	11	\$0.00	0.00	\$0.00	19,147.54	\$8,357,935.45	7.40	\$17,239.91	7,127.58	26,282.52	
North Dakota											
<i>Arrowwood WMD</i>											
Eddy *	0.00	\$0.00	642.00	\$596,050.00	4,627.21	\$498,001.00	12,704.63	\$996,020.00	446.34	17,778.18	
Foster	0.00	\$0.00	781.00	\$1,196,050.00	1,487.07	\$96,568.00	8,549.00	\$3,255,565.00	0.00	10,036.07	
WMD Total:	2	\$0.00	1,423.00	\$1,792,100.00	6,114.28	\$594,569.00	21,253.63	\$4,251,585.00	446.34	27,814.25	
<i>Audubon WMD</i>											
Dunn FSA **	0.00	\$0.00	0.00	\$0.00	0.00	\$0.00	0.00	\$0.00	1,235.20	1,235.20	
Hettinger	0.00	\$0.00	0.00	\$0.00	0.00	\$0.00	0.00	\$0.00	1,202.60	1,202.60	
McLean	0.00	\$0.00	977.00	\$1,274,775.00	4,219.10	\$536,234.00	27,823.00	\$5,813,465.00	25,107.48	57,149.58	
Mercer *	0.00	\$0.00	0.00	\$0.00	0.00	\$0.00	0.00	\$0.00	1,046.00	1,046.00	
Sheridan *	0.00	\$0.00	119.00	\$119,025.00	7,661.50	\$468,427.00	36,661.34	\$3,347,695.00	34,968.27	79,291.11	
Ward	0.00	\$0.00	0.00	\$0.00	5,868.60	\$489,211.00	38,940.51	\$1,467,339.00	15,982.53	60,791.64	
WMD Total:	5	\$0.00	1,096.00	\$1,393,800.00	17,749.20	\$1,493,872.00	103,424.85	\$10,628,499.00	79,542.08	200,716.13	

Table 2. Waterfowl Production Areas

State and Unit	FISCAL YEAR MBCF ACQUISITION				CUMULATIVE TOTALS AT END OF FISCAL YEAR						
	Fee Title		Easement or Lease		MBCF				All Other Acres	Total Acres	
	Acres	Cost	Acres	Cost	Acres	Cost	Acres	Cost			
North Dakota (Continued)											
<i>Chase Lake Prairie Project WMD</i>											
Stutsman *	0.00	\$0.00	2,111.00	\$2,285,525.00	23,403.35	\$1,308,016.00	54,463.44	\$11,383,928.00	43,190.18	121,056.97	
Wells *	0.00	\$0.00	411.00	\$305,125.00	7,471.61	\$1,153,059.00	14,305.00	\$1,079,252.00	6,986.17	28,762.78	
WMD Total:	2	\$0.00	2,522.00	\$2,590,650.00	30,874.96	\$2,461,075.00	68,768.44	\$12,463,180.00	50,176.35	149,819.75	
<i>Crosby WMD</i>											
Burke	0.00	\$0.00	0.00	\$0.00	3,545.96	\$180,068.00	27,018.00	\$799,705.00	20,797.95	51,361.91	
Divide	0.00	\$0.00	0.00	\$0.00	9,474.62	\$499,540.00	35,871.69	\$854,835.00	11,694.16	57,040.47	
Williams *	0.00	\$0.00	50.00	\$16,825.00	4,163.17	\$278,057.00	8,635.00	\$292,300.00	2,356.86	15,155.03	
WMD Total:	3	\$0.00	50.00	\$16,825.00	17,183.75	\$957,665.00	71,524.69	\$1,946,840.00	34,848.97	123,557.41	
<i>Devils Lake WMD</i>											
Benson *	0.00	\$0.00	273.00	\$176,025.00	7,296.77	\$607,908.00	37,504.81	\$2,319,905.00	9,525.39	54,326.97	
Cavalier *	0.00	\$0.00	0.00	\$0.00	10,129.12	\$1,354,471.00	14,521.00	\$1,277,315.00	1,273.71	25,923.83	
Grand Forks	0.00	\$0.00	0.00	\$0.00	6,934.43	\$1,874,422.05	1,228.00	\$143,785.00	1,021.26	9,183.69	
Nelson *	0.00	\$0.00	0.00	\$0.00	3,203.23	\$174,341.00	37,856.70	\$1,336,445.00	4,495.14	45,555.07	
Pembina *	0.00	\$0.00	0.00	\$0.00	2,258.56	\$218,677.00	139.00	\$1,900.00	293.90	2,691.46	
Ramsey *	0.00	\$0.00	0.00	\$0.00	8,183.04	\$1,144,252.00	29,991.00	\$1,319,660.00	3,607.27	41,781.31	
Towner *	0.00	\$0.00	0.00	\$0.00	3,837.02	\$494,146.00	25,556.36	\$1,553,540.00	7,451.35	36,844.73	
Walsh *	0.00	\$0.00	0.00	\$0.00	1,393.19	\$98,128.00	8,463.00	\$254,150.00	1,323.63	11,179.82	
WMD Total:	8	\$0.00	273.00	\$176,025.00	43,235.36	\$5,966,345.05	155,259.87	\$8,206,700.00	28,991.65	227,486.88	
<i>J. Clark Salyer WMD</i>											
Bottineau *	0.00	\$0.00	31.00	\$58,925.00	2,334.06	\$200,763.00	31,051.69	\$2,632,680.00	1,393.13	34,778.88	
McHenry *	0.00	\$0.00	0.00	\$0.00	4,888.80	\$374,404.50	32,353.00	\$1,583,545.00	38,363.61	75,605.41	
Pierce *	0.00	\$0.00	191.00	\$157,150.00	8,403.66	\$936,855.00	38,106.00	\$1,870,910.00	13,485.57	59,995.23	
Renville	0.00	\$0.00	0.00	\$0.00	311.09	\$23,523.00	17,028.00	\$1,890,140.00	54.60	17,393.69	
Rolette	0.00	\$0.00	0.00	\$0.00	5,685.92	\$759,347.00	21,028.01	\$847,295.00	722.96	27,436.89	
WMD Total:	5	\$0.00	222.00	\$216,075.00	21,623.53	\$2,294,892.50	139,566.70	\$8,824,570.00	54,019.87	215,210.10	
<i>Kulm WMD</i>											
Dickey *	0.00	\$0.00	316.00	\$807,100.00	9,735.40	\$1,150,816.00	32,787.02	\$8,265,125.00	20,520.72	63,043.14	
La Moure *	0.00	\$0.00	0.00	\$0.00	4,799.96	\$505,095.00	23,747.25	\$17,546,674.00	2,629.31	31,176.52	
Logan *	0.00	\$0.00	2,307.00	\$2,445,825.00	11,226.24	\$1,006,598.00	42,174.73	\$3,897,611.00	25,124.19	78,525.16	
McIntosh *	0.00	\$0.00	1,300.00	\$1,801,800.00	17,373.48	\$1,368,865.00	34,942.00	\$4,474,485.00	17,285.45	69,600.93	
WMD Total:	4	\$0.00	3,923.00	\$5,054,725.00	43,135.08	\$4,031,374.00	133,651.00	\$34,183,895.00	65,559.67	242,345.75	
<i>Long Lake WMD</i>											
Burleigh *	0.00	\$0.00	41.00	\$51,950.00	9,451.44	\$1,899,164.00	28,863.10	\$1,605,100.00	44,058.90	82,373.44	
Emmons *	0.00	\$0.00	149.00	\$224,825.00	3,135.29	\$174,321.75	13,184.00	\$1,067,000.00	5,674.34	21,993.63	
Kidder *	0.00	\$0.00	77.00	\$27,325.00	5,547.52	\$438,439.00	65,864.02	\$1,708,630.00	53,003.78	124,415.32	
WMD Total:	3	\$0.00	267.00	\$304,100.00	18,134.25	\$2,511,924.75	107,911.12	\$4,380,730.00	102,737.02	228,782.39	
<i>Lostwood WMD</i>											
Mountrail *	0.00	\$0.00	518.00	\$400,175.00	9,905.10	\$940,661.00	32,876.00	\$1,745,381.00	39,156.90	81,938.00	
WMD Total:	1	\$0.00	518.00	\$400,175.00	9,905.10	\$940,661.00	32,876.00	\$1,745,381.00	39,156.90	81,938.00	
<i>Tewaukon WMD</i>											
Ransom	0.00	\$0.00	315.00	\$981,925.00	4,315.02	\$617,357.00	21,742.08	\$3,773,950.00	3,959.58	30,016.68	
Richland	0.00	\$0.00	96.00	\$281,375.00	6,523.60	\$2,085,181.00	2,840.80	\$1,513,795.00	4,886.32	14,250.72	
Sargent *	0.00	\$0.00	273.00	\$557,625.00	3,537.46	\$305,439.00	15,580.40	\$2,790,135.00	10,000.81	29,118.67	
WMD Total:	3	\$0.00	684.00	\$1,820,925.00	14,376.08	\$3,007,977.00	40,163.28	\$8,077,880.00	18,846.71	73,386.07	
<i>Valley City WMD</i>											
Barnes *	0.00	\$0.00	1,506.00	\$3,142,175.00	6,713.88	\$1,085,862.00	24,051.45	\$10,021,035.00	2,347.51	33,112.84	
Cass	0.00	\$0.00	0.00	\$0.00	3,439.89	\$628,344.00	1,709.00	\$133,825.00	50.90	5,199.79	
Griggs	0.00	\$0.00	56.00	\$91,150.00	3,069.46	\$373,990.00	17,673.00	\$1,489,700.00	260.25	21,002.71	
Steele	0.00	\$0.00	0.00	\$0.00	3,249.25	\$538,345.00	4,006.00	\$273,670.00	359.30	7,614.55	
Traill	0.00	\$0.00	0.00	\$0.00	719.36	\$75,109.00	233.00	\$4,830.00	1.00	953.36	
WMD Total:	5	\$0.00	1,562.00	\$3,233,325.00	17,191.84	\$2,701,650.00	47,672.45	\$11,923,060.00	3,018.96	67,883.25	
State Total	41	\$0.00	12,540.00	\$16,998,725.00	239,523.43	\$26,962,005.30	922,072.03	\$106,632,320.00	477,344.52	1,638,939.98	
South Dakota											
<i>Huron WMD</i>											
Beadle *	0.00	\$0.00	552.00	\$752,625.00	7,419.36	\$1,855,212.69	55,560.01	\$16,420,075.00	4,005.34	66,984.71	
Buffalo	0.00	\$0.00	0.00	\$0.00	0.00	\$0.00	7,721.47	\$4,196,678.00	6,472.23	14,193.70	

Table 2. Waterfowl Production Areas

State and Unit	FISCAL YEAR MBCF ACQUISITION				CUMULATIVE TOTALS AT END OF FISCAL YEAR					
	Fee Title		Easement or Lease		MBCF				All Other Acres	Total Acres
	Acres	Cost	Acres	Cost	Acres	Cost	Easement or Lease	Cost		
South Dakota (Continued)										
<i>Huron WMD</i>										
Hand *	0.00	\$0.00	4,556.79	\$2,889,900.00	3,700.56	\$616,260.35	77,670.50	\$18,033,199.00	7,338.71	88,709.77
Hughes	0.00	\$0.00	0.00	\$0.00	455.99	\$82,800.00	3,260.89	\$444,875.00	72.20	3,789.08
Hyde *	0.00	\$0.00	3,402.77	\$3,071,510.00	0.00	\$0.00	40,372.56	\$8,913,645.00	14,818.86	55,191.42
Jerauld *	0.00	\$0.00	357.46	\$217,250.00	1,430.40	\$217,041.00	28,814.29	\$5,305,890.00	894.70	31,139.39
Sanborn *	0.00	\$0.00	488.50	\$755,125.00	93.00	\$5,250.00	46,586.63	\$10,103,470.00	1,236.15	47,915.78
Sully *	0.00	\$0.00	0.00	\$0.00	266.48	\$9,993.00	4,072.73	\$626,590.00	1,983.48	6,322.69
WMD Total:	8	\$0.00	9,357.52	\$7,686,410.00	13,365.79	\$2,786,557.04	264,059.08	\$64,044,422.00	36,821.67	314,246.54
<i>Lacreek WMD</i>										
Haakon FSA **	0.00	\$0.00	0.00	\$0.00	0.00	\$0.00	0.00	\$0.00	1,806.10	1,806.10
Jones FSA **	0.00	\$0.00	0.00	\$0.00	0.00	\$0.00	0.00	\$0.00	221.97	221.97
Stanley FSA **	0.00	\$0.00	0.00	\$0.00	0.00	\$0.00	0.00	\$0.00	1,430.30	1,430.30
WMD Total:	0	\$0.00	0.00	\$0.00	0.00	\$0.00	0.00	\$0.00	3,458.37	3,458.37
<i>Lake Andes WMD</i>										
Aurora *	0.00	\$0.00	2,316.49	\$2,798,625.00	4,876.08	\$798,316.00	45,990.77	\$12,826,420.00	1,511.37	52,378.22
Bon Homme *	0.00	\$0.00	0.00	\$0.00	1,174.17	\$323,624.90	403.00	\$217,130.00	323.54	1,900.71
Brule	0.00	\$0.00	1,060.39	\$1,344,850.00	1,074.13	\$89,404.00	26,771.50	\$9,488,180.00	2,501.77	30,347.40
Charles Mix *	0.00	\$0.00	0.00	\$0.00	4,110.82	\$1,162,147.00	8,988.41	\$1,819,935.00	1,546.31	14,645.54
Clay *	0.00	\$0.00	0.00	\$0.00	40.00	\$8,000.00	7.00	\$200.00	52.50	99.50
Davison *	0.00	\$0.00	581.02	\$894,550.00	229.92	\$24,540.00	2,430.09	\$2,532,154.57	333.11	2,993.12
Douglas *	0.00	\$0.00	160.00	\$259,025.00	3,852.05	\$647,691.00	4,598.64	\$1,154,275.00	683.49	9,134.18
Hanson *	0.00	\$0.00	0.00	\$0.00	1,075.60	\$281,853.00	4,355.20	\$2,117,930.00	132.80	5,563.60
Hutchinson *	0.00	\$0.00	0.00	\$0.00	789.51	\$227,646.25	1,057.00	\$151,075.00	172.50	2,019.01
Lincoln	0.00	\$0.00	0.00	\$0.00	177.22	\$39,925.00	300.50	\$112,645.00	0.00	477.72
Tripp FSA **	0.00	\$0.00	0.00	\$0.00	0.00	\$0.00	0.00	\$0.00	5.90	5.90
Turner *	0.00	\$0.00	0.00	\$0.00	991.73	\$727,444.90	353.00	\$106,090.00	126.90	1,471.63
Union	0.00	\$0.00	0.00	\$0.00	96.02	\$22,331.00	0.00	\$0.00	0.00	96.02
Yankton	0.00	\$0.00	0.00	\$0.00	294.63	\$128,562.00	123.00	\$5,375.00	365.60	783.23
WMD Total:	13	\$0.00	4,117.90	\$5,297,050.00	18,781.88	\$4,481,485.05	95,378.11	\$30,531,409.57	7,755.79	121,915.78
<i>Madison WMD</i>										
Brookings *	0.00	\$0.00	0.00	\$0.00	6,159.47	\$1,650,276.70	7,976.05	\$2,188,866.00	4,303.31	18,438.83
Deuel *	0.00	\$0.00	0.00	\$0.00	3,228.87	\$492,022.00	30,172.08	\$4,942,732.00	9,582.96	42,983.91
Hamlin *	0.00	\$0.00	0.00	\$0.00	3,375.89	\$943,938.00	6,242.74	\$1,130,630.00	323.90	9,942.53
Kingsbury *	0.00	\$0.00	0.00	\$0.00	5,256.36	\$1,258,255.50	26,369.04	\$5,274,219.00	6,523.06	38,148.46
Lake *	0.00	\$0.00	0.00	\$0.00	5,668.92	\$1,296,457.75	6,657.32	\$1,953,635.00	917.12	13,243.36
McCook *	0.00	\$0.00	0.00	\$0.00	3,362.96	\$680,845.60	7,212.31	\$1,975,270.00	958.68	11,533.95
Miner *	0.00	\$0.00	0.00	\$0.00	1,545.87	\$153,695.00	31,111.02	\$11,906,650.00	1,592.64	34,249.53
Minnehaha *	0.00	\$0.00	0.00	\$0.00	4,602.54	\$1,342,286.00	1,720.44	\$387,620.00	79.10	6,402.08
Moody *	0.00	\$0.00	0.00	\$0.00	2,903.78	\$927,478.85	1,959.02	\$645,930.00	828.37	5,691.17
WMD Total:	9	\$0.00	0.00	\$0.00	36,104.66	\$8,745,255.40	119,420.02	\$30,405,552.00	25,109.14	180,633.82
<i>Sand Lake WMD</i>										
Brown	0.00	\$0.00	1,878.85	\$2,044,443.00	4,207.65	\$865,523.80	59,447.14	\$14,702,253.43	1,808.49	65,463.28
Campbell	0.00	\$0.00	1,808.17	\$1,356,050.00	1,919.71	\$185,541.00	39,064.32	\$9,457,605.00	3,904.85	44,888.88
Corson FSA **	0.00	\$0.00	0.00	\$0.00	0.00	\$0.00	0.00	\$0.00	1,105.90	1,105.90
Dewey FSA **	0.00	\$0.00	0.00	\$0.00	0.00	\$0.00	0.00	\$0.00	2,361.80	2,361.80
Edmunds *	0.00	\$0.00	1,979.54	\$2,131,850.00	9,074.49	\$1,767,201.00	137,070.64	\$18,289,673.00	3,171.04	149,316.17
Faulk *	0.00	\$0.00	949.85	\$1,238,500.00	2,726.88	\$712,995.00	141,086.12	\$14,171,340.00	3,721.51	147,534.51
McPherson *	0.00	\$0.00	4,469.15	\$3,095,550.00	19,331.63	\$3,578,761.80	162,547.79	\$17,287,715.00	15,087.45	196,966.87
Potter *	0.00	\$0.00	869.52	\$753,775.00	652.63	\$71,179.00	30,623.03	\$5,234,455.00	415.10	31,690.76
Spink *	0.00	\$0.00	0.00	\$0.00	2,220.86	\$399,130.00	32,285.05	\$7,065,785.00	1,878.01	36,383.92
Walworth *	0.00	\$0.00	0.00	\$0.00	1,270.54	\$191,800.00	23,359.84	\$2,779,515.00	853.30	25,483.68
WMD Total:	8	\$0.00	11,955.08	\$10,620,168.00	41,404.39	\$7,772,131.60	625,483.93	\$88,988,341.43	34,307.45	701,195.77
<i>Waubay WMD</i>										
Clark *	0.00	\$0.00	0.00	\$0.00	5,819.05	\$814,503.90	49,336.64	\$5,678,800.00	1,186.43	56,342.12
Codington *	0.00	\$0.00	214.40	\$197,025.00	4,915.24	\$882,837.70	13,365.26	\$2,644,740.00	1,546.65	19,827.15
Day	0.00	\$0.00	0.00	\$0.00	7,025.43	\$847,107.00	47,206.93	\$4,478,420.00	1,653.75	55,886.11
Grant	0.00	\$0.00	10.00	\$3,600.00	5,362.99	\$1,005,000.00	26,979.00	\$5,582,445.00	819.60	33,161.59
Marshall *	0.00	\$0.00	642.48	\$525,075.00	10,841.65	\$1,923,929.00	60,276.32	\$5,956,831.00	767.26	71,885.23

Table 2. Waterfowl Production Areas

State and Unit	FISCAL YEAR MBCF ACQUISITION				CUMULATIVE TOTALS AT END OF FISCAL YEAR						
	Fee Title		Easement or Lease		MBCF				All Other Acres	Total Acres	
	Acres	Cost	Acres	Cost	Acres	Cost	Easement or Lease	Cost			
South Dakota (Continued)											
<i>Waubay WMD</i>											
Roberts *	0.00	\$0.00	16.54	\$11,900.00	4,908.32	\$823,410.80	52,267.64	\$4,090,800.00	2,728.08	59,904.04	
<i>WMD Total:</i>	<i>6</i>	<i>\$0.00</i>	<i>883.42</i>	<i>\$737,600.00</i>	<i>38,872.68</i>	<i>\$6,296,788.40</i>	<i>249,431.79</i>	<i>\$28,432,036.00</i>	<i>8,701.77</i>	<i>297,006.24</i>	
State Total	44	\$0.00	26,313.92	\$24,341,228.00	148,529.40	\$30,082,217.49	1,353,772.93	\$242,401,761.00	116,154.19	1,618,456.52	
Wisconsin											
<i>Leopold WMD</i>											
Adams	0.00	\$0.00	0.00	\$0.00	344.00	\$172,500.00	0.00	\$0.00	0.00	344.00	
Columbia	0.00	\$0.00	0.00	\$0.00	3,745.43	\$5,354,951.45	0.00	\$0.00	97.85	3,843.28	
Dane	0.00	\$0.00	0.00	\$0.00	1,671.36	\$2,979,875.65	0.00	\$0.00	117.21	1,788.57	
Dodge	0.00	\$0.00	0.00	\$0.00	698.98	\$1,079,141.16	0.43	\$1,000.00	154.81	854.22	
Fond du Lac	0.00	\$0.00	0.00	\$0.00	881.06	\$1,699,888.00	0.00	\$0.00	373.84	1,254.90	
Jefferson	0.00	\$0.00	0.00	\$0.00	249.79	\$241,239.00	0.00	\$0.00	62.00	311.79	
Manitowoc	0.00	\$0.00	0.00	\$0.00	256.13	\$186,000.00	0.00	\$0.00	75.00	331.13	
Marquette	0.00	\$0.00	0.00	\$0.00	259.97	\$119,480.00	0.00	\$0.00	119.27	379.24	
Ozaukee	0.00	\$0.00	0.00	\$0.00	709.30	\$1,591,413.40	0.00	\$0.00	0.00	709.30	
Rock	0.00	\$0.00	0.00	\$0.00	349.32	\$302,358.71	0.00	\$0.00	100.00	449.32	
Sauk	0.00	\$0.00	0.00	\$0.00	26.87	\$191,000.00	0.00	\$0.00	210.88	237.75	
Sheboygan	0.00	\$0.00	0.00	\$0.00	499.03	\$1,364,636.94	0.00	\$0.00	311.99	811.02	
Waushara	0.00	\$0.00	0.00	\$0.00	232.30	\$243,000.00	0.00	\$6,000.00	0.00	232.30	
Winnebago	0.00	\$0.00	0.00	\$0.00	1,870.13	\$1,348,651.00	0.00	\$0.00	318.45	2,188.58	
<i>WMD Total:</i>	<i>14</i>	<i>\$0.00</i>	<i>0.00</i>	<i>\$0.00</i>	<i>11,793.67</i>	<i>\$16,874,135.31</i>	<i>0.43</i>	<i>\$7,000.00</i>	<i>1,941.30</i>	<i>13,735.40</i>	
<i>St. Croix WMD</i>											
Dunn	0.00	\$0.00	0.00	\$0.00	726.45	\$1,043,700.00	0.00	\$0.00	150.80	877.25	
Polk	0.00	\$0.00	0.00	\$0.00	935.09	\$875,424.00	0.00	\$0.00	221.98	1,157.07	
St. Croix	0.00	\$0.00	0.00	\$0.00	5,773.55	\$9,059,904.56	0.64	\$1,500.00	433.84	6,208.03	
<i>WMD Total:</i>	<i>3</i>	<i>\$0.00</i>	<i>0.00</i>	<i>\$0.00</i>	<i>7,435.09</i>	<i>\$10,979,028.56</i>	<i>0.64</i>	<i>\$1,500.00</i>	<i>806.62</i>	<i>8,242.35</i>	
State Total	17	\$0.00	0.00	\$0.00	19,228.76	\$27,853,163.87	1.07	\$8,500.00	2,747.92	21,977.75	
Grand Total	209	\$353.52	\$855,800.00	46,581.48	\$46,338,825.50	694,162.17	\$250,378,422.41	2,538,924.33	\$422,483,549.12	663,682.86	3,896,769.36

* These counties include interests transferred by the FSA.

** Denotes interests transferred by the FSA.

FSA - Farm Service Agency (formerly Farmers Home Administration, Department of Agriculture)

Negative numbers in the *Fiscal Year MBCF Acquisition* acreage totals reflect acres disposed through land-for-land exchanges, where the Service exchanged previously acquired WPA lands for other lands with superior wildlife habitat values. Exchanges also help to consolidate land holdings and improve land management efficiency.



The National Wildlife Refuge System: Public Hunting and Fishing

The mission of the National Wildlife Refuge System is to administer a national network of lands and waters for the conservation, management, and, where appropriate, restoration of the fish, wildlife, and plant resources and their habitats within the United States for the benefit of present and future generations of Americans. The Service acquires lands for the Refuge System primarily to conserve important wildlife habitat; however, the overwhelming majority of the Service's fee and lease acquisitions also provide opportunities for public wildlife-dependent recreation, such as hunting and fishing.

The National Wildlife Refuge System Improvement Act of 1997 (Improvement Act) amended the National Wildlife Refuge System Administration Act of 1966, making hunting and fishing, along with wildlife observation, photography, and environmental education and interpretation, priority public uses of the Refuge System. However, the Act also requires the Secretary of the Interior, before allowing a use such as hunting or fishing, to determine that the use is compatible with the purpose for which the refuge was established and the mission of the Refuge System. This requirement ensures that the Service maintains the biological integrity, diversity, and environmental health of the Refuge System.

In consultation with State fish and wildlife agencies, the Service develops specific management plans for a refuge prior to opening it to public hunting or fishing. In many cases, the Service develops refuge-specific regulations to ensure the compatibility of the plans with the purpose(s) for which the refuge was established and the Refuge System mission.

In addition to increasing the number of acres available for public use, land acquisitions often enhance public recreational access to existing Refuge System lands. Since the passage of the Improvement Act, the Service has opened over 100 refuges to public hunting and/or fishing for the first time, and expanded hunting and fishing on nearly 100 additional refuges. Expansions include adding new lands or waters, increasing the types of hunts, or increasing the kinds of species to be hunted on refuges previously open to hunting and/or fishing.

As of the end of fiscal year 2016, 336 national wildlife refuges were open for public hunting, including 85.6 million of these refuges' 89 million fee or lease acres. These refuges include 265 migratory bird refuges, in which 6.3 million of the 9.4 million fee or lease acres were open for public hunting. In waterfowl production areas, all 784,343 fee acres were open for public hunting.

As of the end of fiscal year 2016, 276 national wildlife refuges were open for public fishing. A national figure for refuge acres open to public fishing is not available because States often own the lakebed, i.e., the land beneath the lake water, within refuge boundaries; public fishing is subject to State law and Federal regulations.

The Refuge System also includes nearly four million acres of conservation easements, where private landowners retain fee ownership, and, in most cases, control over public access. Many of these acres are enrolled in State programs that provide public hunting opportunities; however, the Service does not track which lands private landowners have enrolled in these programs.

	Units Open to Public Hunting and Fishing in FY 2016					Acres Open to Public Hunting			Total Refuge Acres as of FY 2016
	Fishing Authorized	Hunting Authorized	Migratory Bird Hunting	Upland Game Hunting	Big Game Hunting	Acres Open as of FY 2015	Change in FY 2016	Acres Open as of FY 2016	
Refuges	276	336	265	227	273	85,532,598	+82,715	85,615,313	146,246,636
WMDs	34	37	37	37	37	781,908	+2,435	784,343	3,896,802
Total	310	373	302	264	310	86,315,506	+85,150	86,399,656	150,143,437

Notes: Wetland Management Districts (WMDs) are complexes that manage waterfowl production areas. Total refuge acreage includes over 54 million submerged acres in refuges in marine national monuments, as well as 4 million easement acres where landowners retain fee ownership including control over public access. For a full breakout by refuge, download the FY 2016 Report, Status of Hunting and Fishing on NWRs Lands, from <http://www.fws.gov/refuges/realty/mbcc.html>.

In accordance with the Improvement Act and Federal regulations (50 CFR 32.1 and 50 CFR 32.4), the Service must publish a rule, pursuant to the Administrative Procedure Act (5 U.S.C. 553), to open national wildlife refuge lands to hunting and fishing. The Service must also publish a rule to close refuge lands to hunting and fishing once they have been opened to those uses. In contrast, fee title lands acquired as WPAs are immediately open to hunting of migratory game birds, upland game, and big game, as well as fishing, subject to State law and Federal regulations.

Openings for Fiscal Year 2016

On October 4, 2016, the Service published a rule in the *Federal Register* (81 FR 68874) that added one refuge to the list of national wildlife refuges open to public hunting and one refuge to the list of refuges open to public fishing.

Opened to Hunting

- *Baca National Wildlife Refuge (Colorado)*

Opened to Fishing

- *Lake Andes National Wildlife Refuge (South Dakota)*

Expansions in Fiscal Year 2016

The Service's October 4, 2016, rule expanded public hunting at 11 refuges, and expanded public fishing at one refuge (Patoka River NWR in Indiana).

Three of the expansions opened existing refuge lands to big game hunting for the first time, six expansions added additional species for hunting, and 10 expansions opened additional lands to public hunting. In all, these expansions opened 28,915 more acres to public hunting, in addition to the 53,800 acres opened at Baca NWR to migratory bird hunting, upland game hunting, and big game hunting. In waterfowl production areas, fee title purchases and donations expanded the acres open to public hunting and fishing by 2,435 acres.



U.S. Fish and Wildlife Service employee assists two young girls with a fish they caught at Charles M. Russell NWR.



A father and his son are hunting at Charles M. Russell NWR.



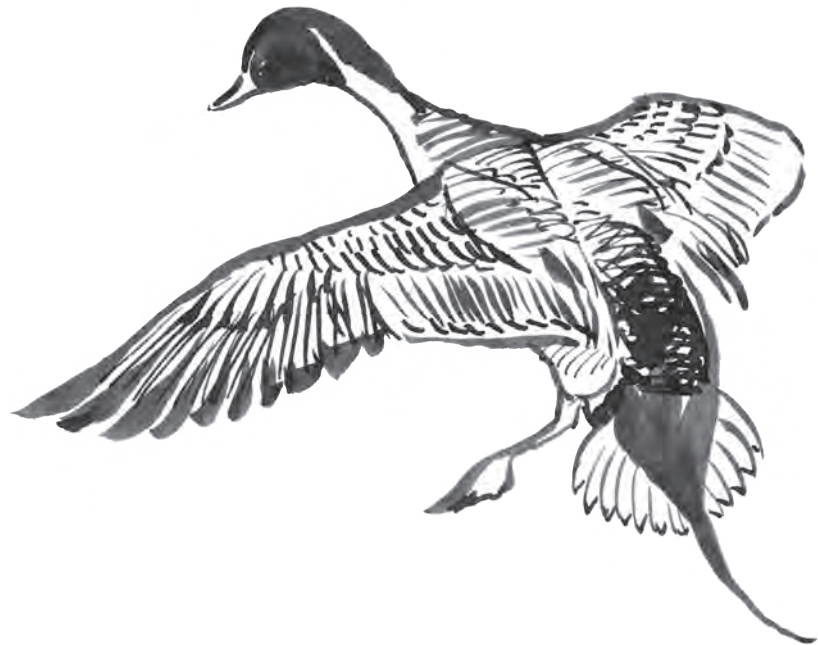
Big Branch Marsh National Wildlife Refuge Law Enforcement officer checks for compliance of fishing license.

Table 3. National Wildlife Refuge Hunting Openings and Expansions

Unit	State(s)	Acres Opened to Hunting in FY 2016	Description
Alamosa	Colorado	6,940	Increased the number of species available for migratory bird hunting, opened the refuge to big game hunting for the first time, and added acreage available for big game hunting.
Anahuac	Texas	550	Increased the acreage and number of species available for migratory bird hunting.
Atchafalaya	Louisiana	0	Increased the number of species available for big game hunting.
Baca	Colorado	53,800	Opened the refuge to migratory bird hunting, upland game hunting, and big game hunting for the first time.
Black Bayou Lake	Louisiana	800	Increased the acreage available for migratory bird hunting, upland game hunting, and big game hunting.
Buffalo Lake	Texas	4,246	Opened the refuge to big game hunting for the first time and increased the acreage available for big game hunting.
Detroit River	Michigan	192	Increased the acreage available for big game hunting, migratory bird hunting, and upland game hunting.
Monte Vista	Colorado	9,523	Increased the number of species available for migratory bird hunting, opened big game hunting for the first time, and increased the acreage available for big game hunting.
Montezuma	New York	865	Increased the acreage and number of species available for migratory bird hunting and big game hunting.
Patoka River	Indiana	119	Increased the acreage available for migratory game hunting, upland game hunting, and big game hunting.
Waccamaw	South Carolina	5,680	Increased the acreage available for migratory game hunting, upland game hunting, and big game hunting.
Washita	Oklahoma	0	Increased the number of species available for big game hunting.
Total		82,715	

Table 4. Waterfowl Production Area Hunting Expansions

State	WMD	WPA County	Acres Opened to Hunting in FY 2016	Description
Minnesota	Big Stone	Lincoln	161	Added acres for fishing, migratory bird hunting, upland game hunting, and big game hunting.
		Lyon	151	“
	Detroit Lakes	Becker	196	“
	Fergus Falls	Otter Tail	106	“
	Litchfield	McLeod	72	“
	Morris	Big Stone	354	“
		Lac Qui Parle	41	“
		Pope	317	“
		Swift	277	“
	Windom	Jackson	250	“
		Martin	206	“
Mower		43	“	
Montana	NW Montana - Flathead	Flathead	142	“
Wisconsin	Leopold	Marquette	119	“
Total			2,435	



The National Wildlife Refuge System: Lands Closed for Public Hunting and Fishing for Fiscal Year 2016

During fiscal year 2016, the Service did not close any lands or waters to public hunting or fishing that were already open to those uses.

Although no lands or waters were closed to public hunting or fishing, refuge managers have the authority to issue temporary closures, which may be for as little as one day and at most one season. Temporary closures may be necessary when unpredictable changes occur in wildlife populations, habitat conditions, or other factors affecting a refuge's wildlife resources. A refuge management action, conducted to meet a refuge-specific purpose, may also warrant a temporary closure. For example, for public safety reasons, a refuge manager may temporarily close an area of a refuge to public hunting and fishing to conduct a prescribed burn. Below is the regulation related to temporary closures:

50 CFR Part 32.1, Opening of wildlife refuge areas to hunting.

...Provided, that all forms of hunting or entry on all or any part of individual areas may be temporarily suspended by posting [with a sign] upon occasions of unusual or critical conditions of, or affecting land, water, vegetation, or wildlife populations.

There are several reasons why all or part of a refuge may not be open to public hunting or fishing. These reasons include, but are not limited to:

- The refuge is geographically inaccessible (e.g., Pacific island refuges).
- Hunting cannot be authorized due to public safety concerns (e.g., due to the proximity to development or a location within city limits where hunting is prohibited).
- The Service has limited conservation easement rights on the land; private landowners retain fee ownership and control public access.
- The refuge does not have potential hunting or fishing opportunities (e.g., Hobe Sound NWR in Florida is dedicated to sea turtle conservation and provides public fishing but no public hunting).
- The refuge is newly established, and the Service is still developing the public visitation plan. The refuge may be opened for public hunting and/or fishing once the Service completes the necessary planning.
- The refuge supports critically endangered or sensitive species that would be easily disturbed by visitation (e.g., Ozark Plateau NWR in Oklahoma is mostly a network of underground caves and tunnels for federally listed endangered and threatened Ozark cave species).
- The refuge is closed to the public for national security reasons (e.g., San Andres NWR in New Mexico is located within the boundary of the White Sands Missile Range).

The National Wildlife Refuge System: Status of Public Hunting and Fishing on Lands Acquired in Fiscal Year 2016

Public hunting and fishing uses are evaluated on all land acquisitions for compatibility with refuge purposes, and, if found compatible, the lands are opened to those uses. Fee title lands acquired as waterfowl production areas are immediately open to hunting of migratory game birds, upland game, and big game, as well as fishing, subject to State law and Federal regulations.

The Service's most recent update to its hunting and fishing regulations, published in the *Federal Register* on, and effective as of, October 4, 2016 (81 FR 68874), did not cover any fee title lands acquired during fiscal year 2016; it only covered lands acquired in prior fiscal years. Thus, the only fee lands acquired during fiscal year 2016 that were open to hunting and fishing as of September 30, 2016, were the 2,435 fee acres acquired as waterfowl production areas, including 2,174 acres in Minnesota, 142 acres in Montana, and 119 acres in Wisconsin.



Dog patiently waiting for the hunt at Kenai National Wildlife Refuge.



Waterfowl take flight from Chincoteague National Wildlife Refuge waters.



Fly fishermen placed to give each person the same amount of fishing area at Kenai National Wildlife Refuge.

North American Wetlands Conservation Act: Summary of MBCC Approvals for Fiscal Year 2016

The Migratory Bird Conservation Commission approved 61 standard wetland conservation grant proposals recommended for funding in Fiscal Year 2016 by the North American Wetlands Conservation Council. A total of \$70,273,318 from the North American Wetlands Conservation Fund, together with \$131,254,331 in partner funds, support 45 standard grants in the United States, 9 in Canada, and 7 in Mexico. In addition, the Commission approved 52 United States small grant proposals, totaling \$3,689,183 from the Fund, supported by \$13,558,456 in total partner funds. The following tables provide summary and detailed project information.

Fiscal Year 2016

NAWCA grants approved by the Migratory Bird Conservation Commission

<i>Country</i>	<i>Number of Proposals</i>	<i>NAWCA Funds</i>	<i>Partner Contribution</i>	<i>Acres Affected</i>
U.S.	45	\$47,346,355	\$106,209,551	271,414
Canada	9	\$20,753,599	\$20,753,599	44,006
Mexico	7	\$2,173,364	\$4,291,181	91,911
Standard Grants	61	\$70,273,318	\$131,254,331	407,331
U.S. Small Grants	52	\$3,689,183	\$13,558,456	19,006

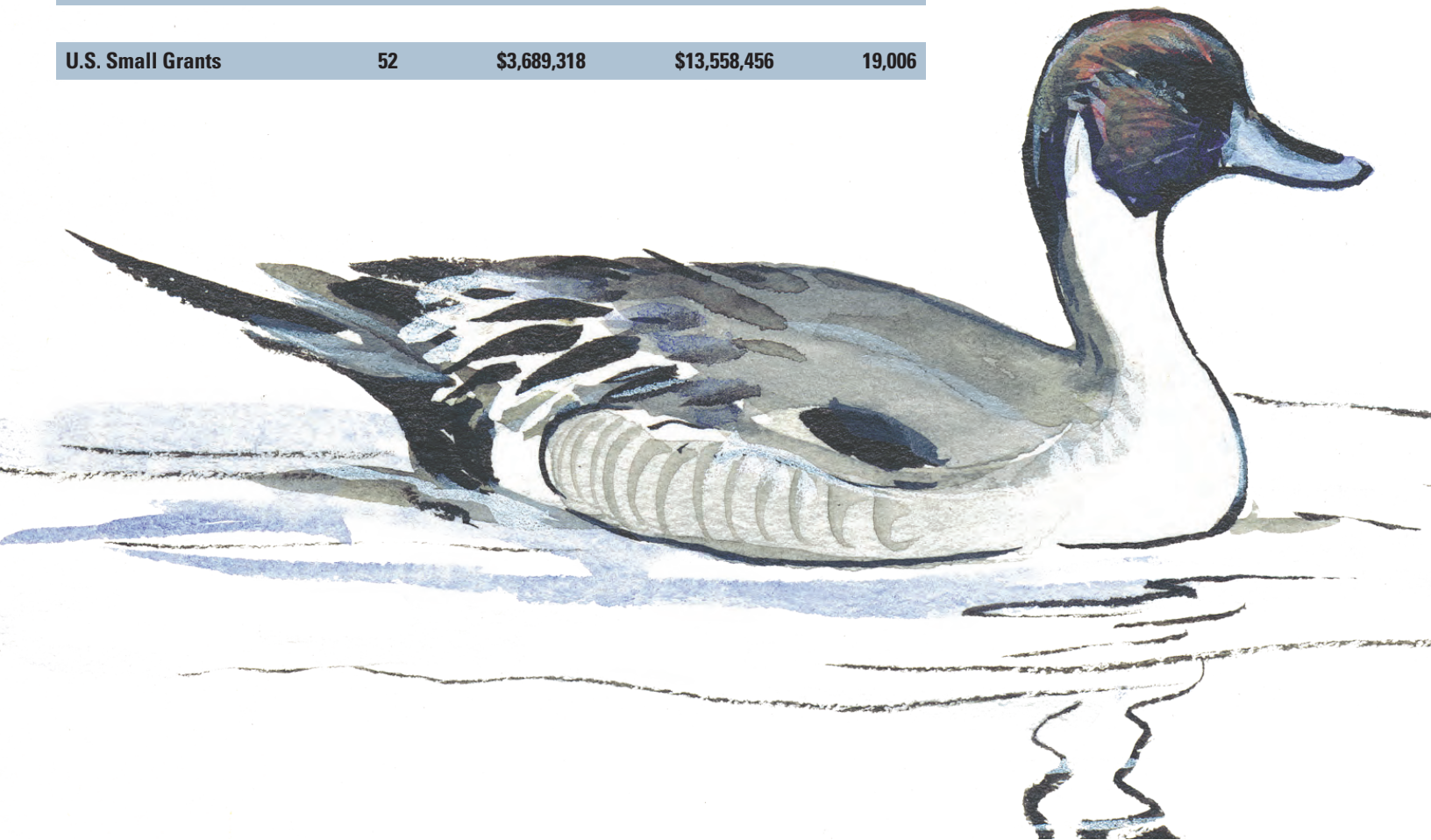


Table 5. U.S. Wetlands Conservation Standard Grants

<i>Project Title</i>	<i>State</i>	<i>NAWCA Funds</i>	<i>Partner Contribution</i>	<i>Acres</i>	<i>Grant Funds for USFWS</i>	<i>Coastal Project</i>
Atchafalaya River Basin I	LA	\$1,000,000	\$2,375,887	5,436		Yes
Bayou Monnaie Marsh	LA	\$1,000,000	\$2,300,000	7,312		Yes
Border Prairie Wetlands IV	MN	\$1,000,000	\$3,664,903	1,618		No
Carolina Wetlands Initiative I	NC	\$1,000,000	\$2,200,000	6,800		Yes
Carolina Wetlands Initiative II	NC, SC	\$1,000,000	\$2,010,000	1,215		Yes
Central Flyway Migration Corridor II	KS, NE	\$817,604	\$1,240,252	5,903		No
Chase Lake Area Wetland Project XII	ND	\$2,000,000	\$2,001,216	33,040	\$2,000,000	No
Coastal Prairie Habitat Initiative	TX	\$1,000,000	\$2,035,032	2,861		Yes
Coastal South Carolina Focus Areas Protection I	SC	\$1,000,000	\$2,003,500	6,931		Yes
Creole Marsh	LA	\$1,000,000	\$2,200,000	11,308		Yes
Eastern Nebraska Wetlands	NE	\$932,706	\$1,886,545	2,492		No
Eastern South Dakota Wetlands I	SD	\$1,626,545	\$1,642,117	2,883		No
James River Lowlands / Missouri Coteau Project VIII	SD	\$1,000,000	\$1,010,781	2,152		No
Kansas Prairie Wetlands II	KS	\$1,000,000	\$2,011,117	5,091		No
Lake Erie Coastal Wetlands	OH	\$1,000,000	\$4,557,000	2,186	\$50,000	Yes
Lowcountry Protection II	SC	\$1,000,000	\$2,169,054	3,779		Yes
Lower Mississippi Delta Wetlands	MS	\$999,481	\$2,003,924	3,092		No
MAV Wetlands Conservation I	MS	\$999,623	\$2,115,250	4,147		No
Mid-Barataria Wetlands I	LA	\$1,000,000	\$2,020,750	2,047		Yes
Missouri Coteau Habitat Conservation Project XIV	ND	\$1,000,000	\$1,006,468	3,735		No
Montana Hi-Line Prairie Wetland VI	MT	\$1,000,000	\$1,584,565	7,349	\$1,000,000	No
Mukwonago - Fox River Focus Area II	WI	\$1,000,000	\$2,686,722	4,787	\$50,000	No
North Dakota Drift Prairie Project V	ND	\$1,300,000	\$1,373,115	20,886	\$1,300,000	No
North Dakota Northern Prairie III	ND	\$1,000,000	\$1,149,537	33,186	\$1,000,000	No
Pass a Loure Bird Enhancement	LA	\$1,000,000	\$2,150,000	2,259		Yes
Platte River Wetlands Partnership IV	CO	\$1,000,000	\$3,797,749	3,304	\$50,000	No
Prairie Lakes 8 Wetland Initiative	IA	\$1,993,650	\$4,966,110	2,877		No
Rappahannock River Conservation Partnership Phase I	VA	\$750,000	\$3,813,500	3,888		Yes
San Joaquin Wetlands Conservation II	CA	\$1,000,000	\$2,382,427	5,951		No
Sansavilla Phase I	GA	\$1,000,000	\$4,022,175	3,319		Yes
Santee Delta-Winyah Bay Wetlands III	SC	\$1,000,000	\$2,024,000	3,559		Yes
Schoodic Mtn to Peninsula Coastal Maine Partnership	ME	\$959,900	\$2,098,500	2,196		Yes
SONEC: Honey Lake Sub-Basin Wetlands I	CA	\$1,000,000	\$2,263,489	3,691		No
South Carolina Coastal Rivers Conservation Partnership	SC	\$1,000,000	\$5,878,500	10,995		Yes
South Carolina Lowcountry Wetlands VII	SC	\$1,000,000	\$2,000,000	3,421		Yes
South Carolina Wetlands Landscape IV	SC	\$1,000,000	\$2,018,985	1,458		Yes
South Dakota Habitat Legacy II	SD	\$967,000	\$999,012	22,434		No
Suisun Wetlands Conservation II	CA	\$1,000,000	\$1,827,975	5,172		Yes
Texas Chenier Plain Cade Ranch 2	TX	\$1,000,000	4,476,088	1,092		Yes
Texas Gulf Coast XIII	TX	\$999,846	\$2,000,000	2,519		Yes
Upper Iowa Prairie Pothole IV	IA	\$1,000,000	\$2,459,170	1,400		No
Upper Snake River Plain Wetlands	ID	\$1,000,000	\$2,217,236	3,385		No
Virginia Tidal Rivers & Bays I	VA	\$1,000,000	\$2,000,000	2,587		Yes
Wetlands of the Sacramento Valley I	CA	\$1,000,000	\$1,535,425	3,495		No
White & Cache Rivers Wetlands II	AR	\$1,000,000	\$2,031,475	2,177	\$1,000,000	No
Totals:		\$47,346,355	\$106,209,551	271,414	\$6,450,000	

Table 6. U.S. Wetlands Conservation Small Grants

<i>Project Title</i>	<i>Grantee Organization</i>	<i>State</i>	<i>NAWCA Funds</i>	<i>Partner Contribution</i>	<i>Acres</i>	<i>Grant Funds for USFWS</i>	<i>Coastal Project</i>
Addison - Jonesport Black Ducks	Pleasant River Wildlife Foundation	ME	\$75,000	\$79,500	100		Yes
Anahuac NWR Entrance Road Wetlands	Texas R.I.C.E	TX	\$75,000	\$118,747	253		Yes
Arlington WMA Addition	Pheasants Forever, Inc.	MN	\$75,000	\$300,000	75		No
Avon Bottoms IBA Acquisition	Natural Heritage Land Trust	WI	\$75,000	\$279,000	244		No
Bens Island Wetlands Project	Medomak Valley Land Trust	ME	\$26,200	\$28,200	35		Yes
Big Muskego Restoration	Ducks Unlimited	WI	\$75,000	\$830,348	2,450		No
Big Stone County Habitat Enhancement	Pheasants Forever, Inc.	MN	\$75,000	\$101,015	579		No
Bog Brook Project	Sebastcook Regional Land Trust	ME	\$60,000	\$62,180	190		Yes
Busseltown Wetland Enhancement	Ducks Unlimited	TN	\$75,000	\$341,411	185		No
Carlos Avery Wetlands	Pheasants Forever, Inc.	MN	\$75,000	\$876,000	846		No
Cedar Hill Swamp - Ricchuite Tract Acquisition	Tennessee Wildlife Resources Agency	TN	\$75,000	\$220,000	95		No
Conserving the Webhannet Wetlands	Rachel Carson National Wildlife Refuge-FWS	ME	\$75,000	\$94,600	29	\$75,000	Yes
Conway Ranch Restoration 55	California Waterfowl Association	CA	\$75,000	\$75,000	55		Yes
Conway Ranch Restoration 87	California Waterfowl Association	CA	\$75,000	\$75,000	87		Yes
Des Moines River Valley Wetlands II	Ducks Unlimited	IA	\$75,000	\$186,025	124		No
Flat Ranch Wetland Restoration Project	The Nature Conservancy	ID	\$44,400	\$72,400	85		No
French Creek Wetland Initiative	Ducks Unlimited	PA	\$75,000	\$102,346	118		No
Friends of Hackmatack Wetland Conservation Project	Ducks Unlimited	IL,WI	\$75,000	\$133,185	142		No
Gulf Coast Mottled Duck Conservation Plan Initiative 11	Texas R.I.C.E	TX	\$70,500	\$141,000	268		Yes
Hole in One Ranch Wetland Habitat Project	California Waterfowl Association	CA	\$75,000	\$75,000	65		No
Iowa Prairie Potholes Grassland Enhancement III	Pheasants Forever, Inc.	IA	\$75,000	\$75,233	1,432		No
Kiowa Creek Ranch Wetlands	Ducks Unlimited	CO	\$75,000	\$75,755	847		No
Laas Wetland Acquisition	Madison Audubon Society	WI	\$75,000	\$383,700	94		No
Lake Creek Wetlands I	Skagit Land Trust	WA	\$75,000	\$176,644	68		Yes
Long Lake NWR Shallow Habitat Enhancement	Ducks Unlimited	ND	\$75,000	\$127,401	454		No
Lower Chip Iba Wetland Restoration	Wisconsin Department of Natural Resources	WI	\$75,000	\$77,727	262		No
Martin County Minnesota Wetlands	The Conservation Fund	MN	\$75,000	\$258,257	343		No
Mattapoissett River Valley	Town of Mattapoissett	MA	\$75,000	\$499,800	132		Yes
Mesopotamia Swamp	Western Reserve Land Conservancy	OH	\$75,000	\$137,550	141		Yes
Middle Illinois River Partnership	Ducks Unlimited	IL	\$75,000	\$132,885	270		No
Minnesota Valley Wetlands	Pheasants Forever, Inc.	MN	\$75,000	\$80,000	105		No
Minnesota Valley WPAs	Pheasants Forever, Inc.	MN	\$75,000	\$520,000	90		No
Mud Lake WPA III	Pheasants Forever, Inc.	MN	\$75,000	\$672,500	129		No
New York Highlands Wetlands Project	Palisades Parks Conservancy	NY	\$67,334	\$3,524,616	515		Yes
North Park Wetlands	Ducks Unlimited	CO	\$75,000	\$84,427	116		No
Northwest Wisconsin Phase IV	Ducks Unlimited	WI	\$75,000	\$99,900	163		No
Pingree Wetland Restoration	Forest Preserve District of Kane County	IL	\$75,000	\$610,078	74		No
Prairie Coteau Grasslands Enhancement	Pheasants Forever, Inc.	MN	\$75,000	\$89,218	705		No
Prairie Coteau Wetland & Nesting Cover Enhancement	Pheasants Forever, Inc.	MN	\$75,000	\$87,482	697		No
Renovation & Enhancement of the Weehaw Reserve Managed Wetland	MST, LLC	SC	\$75,000	\$75,000	133		Yes
Rich Valley WMA Addition	Pheasants Forever, Inc.	MN	\$75,000	\$139,500	40		No
Ring - Necked Duck Conservation Area	Kaniksu Land Trust	MT	\$75,000	\$285,700	75		No

Table 6. U.S. Wetlands Conservation Small Grants

<i>Project Title</i>	<i>Grantee Organization</i>	<i>State</i>	<i>NAWCA Funds</i>	<i>Partner Contribution</i>	<i>Acres</i>	<i>Grant Funds for USFWS</i>	<i>Coastal Project</i>
Rio Chamita Habitat Resiliency	Chama Peak Land Alliance	CO,NM	\$75,000	\$130,962	67		No
South Fork Republican River Restoration	Cheyenne County	KS	\$32,000	\$34,000	200		No
Southwest Nebraska Playa Restoration	Bird Conservancy of the Rockies	CO,NE	\$48,749	\$48,749	330		No
Ten Mile Creek Conservation Area	West Wisconsin Land Trust	WI	\$75,000	\$248,500	80		No
Texas Playa Conservation Initiative	Texas Parks & Wildlife Department	TX	\$75,000	\$150,000	870		No
Tidal Marsh Transition Zone Restoration Project: Eden Landing Ecological Reserve	Save the Bay	CA	\$50,000	\$50,000	1		Yes
Tule Meadows	California Waterfowl Association	CA	\$65,000	\$65,000	65		Yes
WB Pleasant River - Silver Lake	Forest Society of Maine	ME	\$75,000	\$152,000	4,259		No
Willamette Confluence Wetlands	Friends of Buford Park & Mt.Pisgah	OR	\$75,000	\$136,840	130		No
Wolf River WMA - Simington Tract Acquisition	Tennessee Wildlife Resources Agency	TN	\$75,000	\$138,075	97		No
Totals:			\$3,689,183	\$13,558,456	19,006	\$75,000	



Table 7. Canadian Wetlands Conservation Standard Grants

<i>Project Title (Rank)*</i>	<i>Province***</i>	<i>Recipient</i>	<i>NAWCA Funds</i>	<i>Partner Contribution</i>	<i>Securement Acres</i>	<i>Enhancement Acres</i>	<i>Management Acres</i>
Canadian Prairie Pothole & Western Boreal Habitat Program	AB, BC, MB, NT, SK, YT	Ducks Unlimited Canada	\$9,488,638	\$9,488,638	7,867	5,471	3,653,902
Eastern Habitat Joint Venture - Wetlands Conservation	ON, NB, NL, NS, PEI, QB	Ducks Unlimited Canada	\$2,476,688	\$2,476,688	2,765	1,265	1,085,314
British Columbia Pacific Coastal & Canadian Intermountain Conservation	BC	Ducks Unlimited Canada	\$1,038,273	\$1,038,273	1,250	383	419,744
Ontario, Quebec & Atlantic: Protecting Wetland & Upland Habitat, EHJV**	ON, QC, NB, NS, PEI, NL	Nature Conservancy of Canada	\$1,100,000	\$1,100,000	1,670	150	72,160
Prairies: Protecting Wetlands and Uplands, PHJV**	AB, MB, SK	Nature Conservancy of Canada	\$900,000	\$900,000	950		77,929
Potholes Plus Project	MB, SK	Manitoba Habitat Heritage Corporation	\$250,000	\$250,000	11,220	510	92,780
British Columbia: CIJV** & PBHJV Wetland-Associated Migratory Bird Habitat**	BC	Nature Conservancy of Canada	\$200,000	\$200,000	386	489	19,665
Prairie Pothole Region Landscapes	MB, SK	Ducks Unlimited Canada	\$5,000,000	\$5,000,000	6,581	2,228	
Parkland Bird Production Project	MB	Manitoba Habitat Heritage Corporation	\$300,000	\$300,000	796	25	
Totals:			\$20,753,599	\$20,753,599	33,485	10,521	5,421,494

* Projects are in rank order instead of alphabetical order

**CIJV: Canadian Intermountain Joint Venture
 EHJV: Eastern Habitat Joint Venture
 PHJV: Prairie Habitat Joint Venture
 PBHJV: Pacific Birds Habitat Joint Venture

*** AB Alberta
 BC British Columbia
 MB Manitoba
 NB New Brunswick
 NL Newfoundland/Labrador
 NS Nova Scotia
 NT Northwest Territory
 ON Ontario
 PEI Prince Edward Island
 QB Quebec
 SK Saskatchewan
 YT Yukon Territory



Table 8. Mexican Wetlands Conservation Standard Grants

<i>Project Title (Rank)</i>	<i>State**</i>	<i>Recipient Organization</i>	<i>NAWCA Funds</i>	<i>Partner Contribution</i>	<i>Acres Affected</i>
Hydrological Protection and Restoration of Key Wetland Habitats in the Alvarado Lagoon System, Veracruz, and Laguna de Terminos, Campeche	CAM, VER	Pronatura Mexico - Veracruz	\$454,530	\$810,339	5,521
Conservation Strategy for Migratory Bird Habitats at Laguna Madre, Phase I	TAMPS	Pronatura Noreste	\$408,321	\$1,078,562	4,046
Restoring Migratory Bird Habitat in the Colorado River Delta, through Wetland Restoration and Allocation of Environmental Flows, Phase II	BCN, SON	Pronatura Noroeste	\$564,886	\$1,131,000	988
Integrated Conservation and Management of Laguna Santiaguillo, Durango and the Northwest Chihuahua Wetland Complex (CHNC), Chihuahua	CHIH, DGO	Pronatura Noreste	\$266,170	\$343,229	79,117
Long-term Protection of the El Arco Wetland as Wintering Habitat for Black Brant	BCN	Terra Peninsular	\$76,220	\$79,665	72
Habitat Management and Monitoring of Shorebirds in Northwest Mexico ***		Pronatura Noroeste	\$340,237	\$761,740	1,803
Protection and Restoration of Wintering Habitat for the Black Brant	BCN	Terra Peninsular	\$63,000	\$86,646	364
Totals:			\$2,173,364	\$4,291,181	91,911

*Projects are in rank order instead of alphabetical order.

**State abbreviations:

BCN - Baja California Norte
 BCS - Baja California Sur
 CAM - Campeche
 CHIH - Chihuahua
 DGO - Durango
 NAY - Nayarit
 SIN - Sinaloa
 SON - Sonora
 TAMPS -Tamaulipas
 VER - Veracruz

***Project also includes 358,626 management acres.



Membership of the Migratory Bird Conservation Commission

Fiscal Year	Secretary of the Interior ¹	Secretary of Agriculture ²	Secretary of Commerce ³	Secretary of Transportation ⁴	Administrator of EPA ⁵	Members on Part of the Senate	Members on Part of the House	Secretary to the Commission		
1929	Roy L. Wilbur	Arthur M. Hyde	Robert P. Lamont			Harry B. Hawes	Peter Norbeck	Sam D. McReynolds	Ernest R. Ackerman	Rudolph Dieffenbach
1930										
1931										
1932						Key Pittman			August H. Andresen	
1933	Harold L. Ickes	Henry A. Wallace	Daniel C. Roper						Roy O. Woodruff	
1934									Chester C. Bolton	
1935										
1936										
1937							Charles L. McNary		James Wolfenden	
1938										
1939			Harry L. Hopkins							
1940								John J. Cochran		
1941			Jessie H. Jones			George L. Radcliffe				
1942										
1943										
1944							Vacant		Walter E. Brehm	
1945			Henry A. Wallace				C. Wayland Brooks			
1946	Julius A. Krug									
1947			W. Averell Harriman			A. Willis Robertson		Frank M. Karsten		Arthur A. Riemer
1948			Charles W. Sawyer							
1949							Raymond E. Baldwin			
1950	Oscar L. Chapman						Vacant			
1951							John W. Bricker			
1952									August H. Andresen	
1953	Douglas McKay	Ezra Taft Benson	Sinclair Weeks							
1954										
1955										
1956	Fred A. Seaton									
1957						Thomas C. Hennings, Jr.				Albert J. Rissman
1958									Leon H. Gavin	
1959			Lewis L. Strauss							
1960			Frederick H. Mueller				Roman L. Hruska			
1961	Stewart L. Udall	Orville L. Freeman	Luther H. Hodges							
1962						Lee Metcalf				
1963										
1964										
1965			John T. Connor						George A. Gooding	
1966									Silvio O. Conte	F.G. Spoden Jr.
1967			Alexander B. Trowbridge							
1968				Alan S. Boyd						
1969	Walter J. Hickel	Clifford M. Hardin		John A. Volpe						
1970						Joseph D. Tydings	Henry L. Bellman	John D. Dingell		
1971	Rogers C.B. Morton					Lee Metcalf				Walter R. McAllister

U.S. Department of the Interior
U.S. Fish and Wildlife Service
Division of Realty
realty.fws.gov

December 2016

