

# Feed the Green Bin:

*Residential curbside  
collection in  
Howard County, MD*



Bureau of Environmental Services  
Howard County, Maryland

# Curbside Collections - Summary

- 86,000+ curbside customers
  - Single-family homes, townhomes and some condos
  - Fee on property tax bill
    - \$225 w/yt, \$210 no yt collection
- Trash, Recycling, Yard trim - weekly
  - 3 with foodscrap/yt collection
  - Scrap metal, bulk can be scheduled
  - 15 collection zones
  - Collections are contracted (5yrs)



Bureau of Environmental Services  
Howard County, Maryland



# Food Scrap Collection

- 3 collection routes (6,150+ homes signed up to date)
  - 1<sup>st</sup> route began September 2011 (20% of eligible)
  - September 2013 added 2<sup>nd</sup> route (32% of eligible)
  - October 2014 added ~2,600 (43% of eligible)
  - 9.8 lbs/hh per week avg
  - Est 416T in 2014, 750T in 2015 captured for composting
- 2 schools added 2014, plan to add 2 more in Jan. 2016
  - 74 lbs/day avg Elementary School
  - 50 lbs/day avg Middle School



# Foodscrap Collection cont'd

- Opt-in program (mailings, website)
  - No additional cost
  - 'All-in' area
- Residents collect scraps in their kitchen
  - Use indoor container of choice
- Choice of outdoor cart size – 12, 35 or 65gal
  - Residents-provided containers didn't work
- Picked up weekly – mix foodscrap and yard trim
- Collected year-round (added service)
  - No new collection vehicles added to roadways
- Hauled to compost facility at Alpha Ridge Landfill





## Food Scrap Collection Program

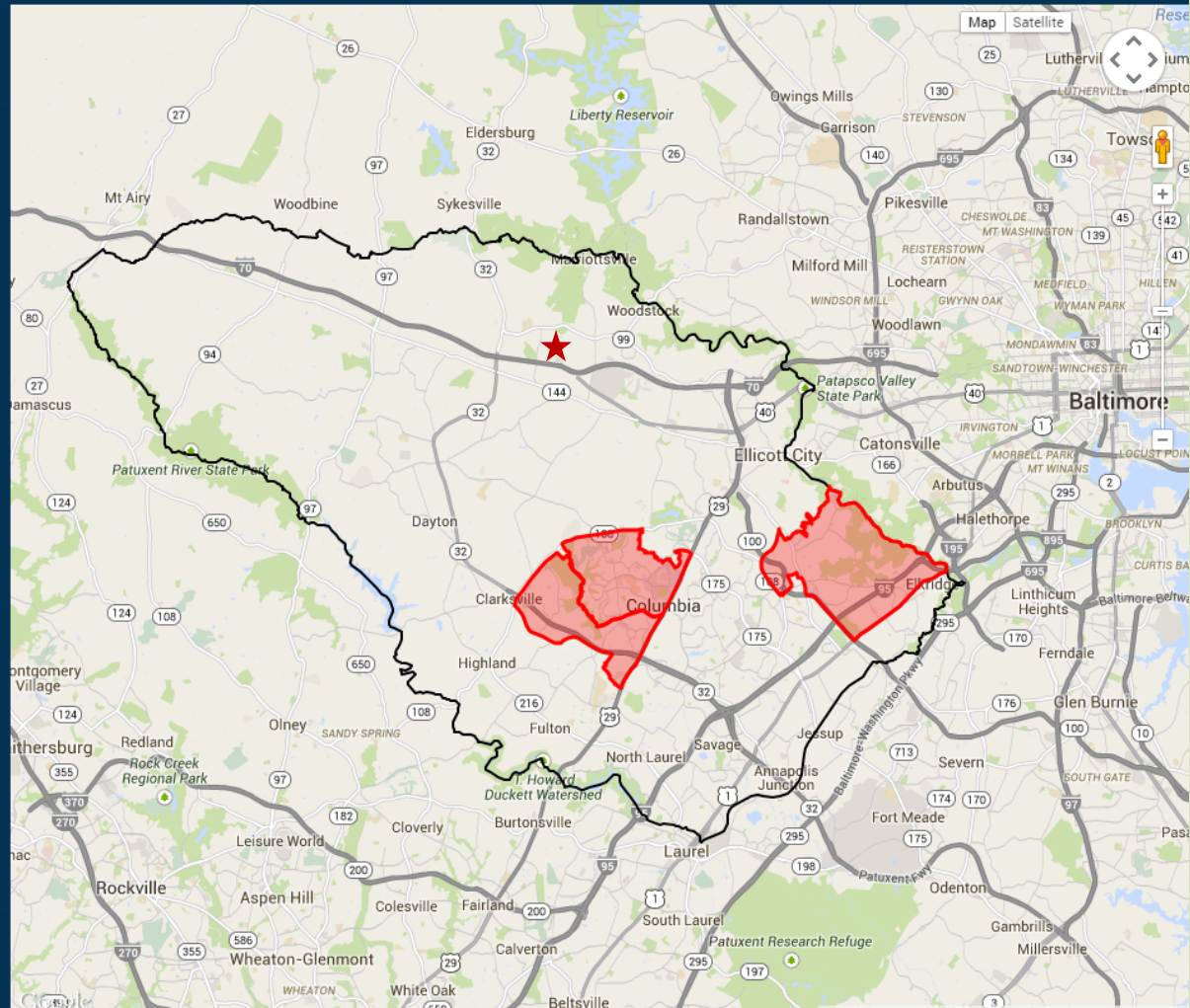
[Disclaimer](#) [About](#)

### Search Address in Food Scrap Collection Program

Begin typing your street name,

then select it from the list:

TURF VALLEY GOLF RD



Bureau of Environmental Services  
Howard County, Maryland



# What we collect:

## Not accepted:

- Meat, fish, shellfish (including bones)
- Dairy products (cheese, butter, ice cream, etc.)
- Fats, oils, grease
- Facial tissues
- Styrofoam
- Pet waste
- Diapers
- Plastic bags

## Accepted:

- Fruit and vegetable scraps (fresh or cooked)
- Bread, pasta, rice, grains, cereal, baked goods, etc.
- Nuts, beans, seeds (including shells/hulls)
- Coffee grounds, filters, tea bags (no foil or foil-backed products)
- Paper products (paper towels, napkins, paper plates)
- Pizza boxes
- Houseplants, cut flowers
- Chopsticks and popsicle sticks
- Grass, leaves, yard trim



# What arrives with the cart?

- Goodie bag—
  - Do's and don'ts, FAQ's, tips
  - Sample box compostable bags
  - Fridge magnet
  - Pencil – contact info
- IML on cart
- 'How-to' videos available



Bureau of Environmental Services  
Howard County, Maryland



# Food Scrap Cart IML

## Feed the Green Bin!



Bread, grains, baked goods, etc.



Paper Products  
(plates, napkins, paper towels)



Fruits & Vegetables  
(fresh or cooked)



Coffee Grounds,  
Filters, Tea Bags



Yard Trim  
(grass, leaves, light brush, weeds)



Pizza Boxes

## NO

- Meat, fish, bones
- Dairy products
- Fats, oils, grease
- Pet waste
- Diapers



410-313-6444



[FeedTheGreenBin.org](http://FeedTheGreenBin.org)



Bureau of Environmental Services  
Howard County, Maryland







Bureau of Environmental Services  
Howard County, Maryland





Bureau of Environmental Services  
Howard County, Maryland

# Food Scrap Processing:

- Pilot compost facility at Alpha Ridge Landfill
  - First loads accepted March 2013
  - Covered, aerated windrow system – purchased from ECS
  - Full scale in design – budget impact
    - Fall 2017 – capacity for half of the County
    - Technology out for bid now
    - Capacity for all routes by 2020



# Lessons Learned - Education

- Mailings – postage-paid, pre-addressed
  - Send multiple
- Dedicated web address & online signup tool
  - FeedThe**GreenBin**.org
- Multiple ways to sign up
- Demo Carts
- Conversations (phone, email, events)



Resident  
 123 Main Street,  
 Columbia, MD 21046

**Green Bin Collection**  
**Coming October 2014**  
**Do your part...**  
 FeedTheGreenBin.org



NO POSTAGE  
 NECESSARY  
 IF MAILED  
 IN THE  
 UNITED STATES



**BUSINESS REPLY MAIL**  
 FIRST-CLASS MAIL PERMIT NO. 15 ELLICOTT CITY MD

POSTAGE WILL BE PAID BY ADDRESSEE

HOWARD COUNTY GOVERNMENT  
 ENVIRONMENTAL SERVICES  
 GEORGE HOWARD BUILDING  
 3430 COURT HOUSE DRIVE  
 ELLICOTT CITY MD 21043-9937



**It's the same type of material you have always set at the curb... the difference is a new container!**

Your neighborhood will be able to participate in the green bin collection program starting October 2014. You and your neighbors can sign up to receive a special County-provided cart for weekly collection. These carts will be emptied on your recycling day by the same truck that collects yard trim. No additional truck is needed!

**What will I put in my green collection cart?**

- Fruit and veggie scraps (fresh or cooked)
- Yard trim, brush, grass clippings
- Houseplants and cut flowers
- Bread, pasta & baked goods
- Egg shells
- Coffee grounds, filters, tea bags
- Paper products (napkins, paper towels & plates)
- Pizza boxes
- NO:** Meat, fish, dairy products, or fats.



Scan this code for more information on green bin collection.



PLEASE DETACH HERE

**Curbside Green Bin Collection**

Sign up at [FeedTheGreenBin.org](http://FeedTheGreenBin.org) or complete and mail this card if you would like to participate in the green bin program.

The container you choose will be delivered in October!  
 Please sign up by **September 22**.

- I would like a 35-gallon cart.
- I would like a 65-gallon cart.

123 Main Street,  
 Columbia, MD  
 21046



**Why collect food scraps separately?**

To reduce waste buried in landfills, save money on disposal costs and reuse valuable resources. Howard County residents can reduce trash sent to the landfill by at least 30%, simply by separating their food scraps.

**What will the cart look like and how big is it?**

Residents can choose from a 35 gallon cart or a 65 gallon cart. Both have a lid and wheels. See picture on reply card.

**How often is the green cart emptied?**

The cart will be emptied on your weekly recycling day by the yard trim truck. Be sure to place items at the curb before 6am on collection day.

**We don't have lot of food scraps, should I still participate?**

Yes! Even small amounts of food scrap reduces trash and saves valuable resources. You can use the bin for yard trim too!

**What should I use to collect food scraps indoors?**

A tub or plastic container is all you need, but if you prefer a food scrap specific container, check online or at local stores. You may also use BPI certified compostable bags.

**What happens to the green bin material?**

Food scraps and yard trim are turned into compost (a valuable soil amendment) at the Alpha Ridge Landfill. For more information, visit [www.howardcountymd.gov/PilotCompostFacility.htm](http://www.howardcountymd.gov/PilotCompostFacility.htm)

**Additional Questions?**

410-313-6444 [FeedTheGreenBin.org](http://FeedTheGreenBin.org)

Tri-fold brochure sent to residents to sign up

- Check a box
- Postage paid



# Green Bin program participants... **GREAT JOB!**

You helped to make this..



Which helps make this!



Buy compost in bulk from the Alpha Ridge Landfill (2350 Marriottsville Road)

# Postcard mailings

## Feed The **Green Bin!**

Sign up now and join your neighbors!



12 gallon

35 gallon

65 gallon

Visit [FeedTheGreenBin.org](http://FeedTheGreenBin.org) or call 410-313-6444 to sign-up.



Bureau of Environmental Services  
Howard County, Maryland

# Lessons Learned - operations

- Deadline? What deadline? (plan accordingly)
- Peer pressure & neighborhood 'norms'
- 'Ick' factor
- Allow yard trim & food scrap
- Provide curbside containers
- Plastic bags for leaves– phasing out



# Questions?

Gemma Evans

410-313-6434

[gevans@howardcountymd.gov](mailto:gevans@howardcountymd.gov)

[www.HowardCountyRecycles.org](http://www.HowardCountyRecycles.org)

[www.FeedTheGreenBin.org](http://www.FeedTheGreenBin.org)



Bureau of Environmental Services  
Howard County, Maryland