



# Maximizing Food Waste



# About Publix

- Founded in 1930
- Operating in six states
- 1,109 Stores
- 10 Dist Centers
- 7 Manufacturing Plants





# Generating Food Waste



<https://www.youtube.com/watch?v=qsLCCp2AD6I>



# Collecting, Staging and Storing



*3-65 gallon toters in cart dumper*



# Training and Education

## Produce Recyclables



Food/Food By-Product Collection

**YES!**

All Food  
Meats, vegetables, fruit  
juice, seafood, steaming

Plants  
floral trimmings



Get into a green routine  
**Publix**

## Trash



Trash

**NO!**

glass  
plastics  
aluminum  
rubber  
metals (for example,  
shaving and tank)  
wet ties  
oil packaging

© 2009 Publix

## Less Trash Means More Cash

### Return on High-Velocity Truck



Place damaged dry grocery products in clean banana boxes for return. Stack 3 boxes to each layer, alternating direction for each layer, 5 layers high. Return only full pallets of 25 boxes to damage return center.



Use cardboard bins to store recyclable materials for return. Send bags of shredded office paper, plastic bags, plastic wrap and polystyrene back for recycling.



Place boxes of newspaper and white paper recycle on pallet in designated area.



Bale clean, dry cardboard, paper bags and cardboard slip sheets.

### Return on Any Truck



Stack 40"x48" Publix pallets together 10 high. Stack 40"x40" Publix pallets together 10 high. Stack Chipp pallets together 10 high. Put broken pallets on top of appropriate stack.

### Return on Low-Velocity Truck



Stack totes up to 5' high. Put broken totes on top. Attempt to keep all stacks same height.

THESE ITEMS MAY BE RETURNED ON HV TRUCK IF NO LV TRUCK IS AVAILABLE.



Break down GM boxes and stack neatly on a standard pallet.



Return bread trays for reuse. Return on bread truck if available.

### Return on Courier Truck



Follow records management process for storage or shredding of confidential papers.

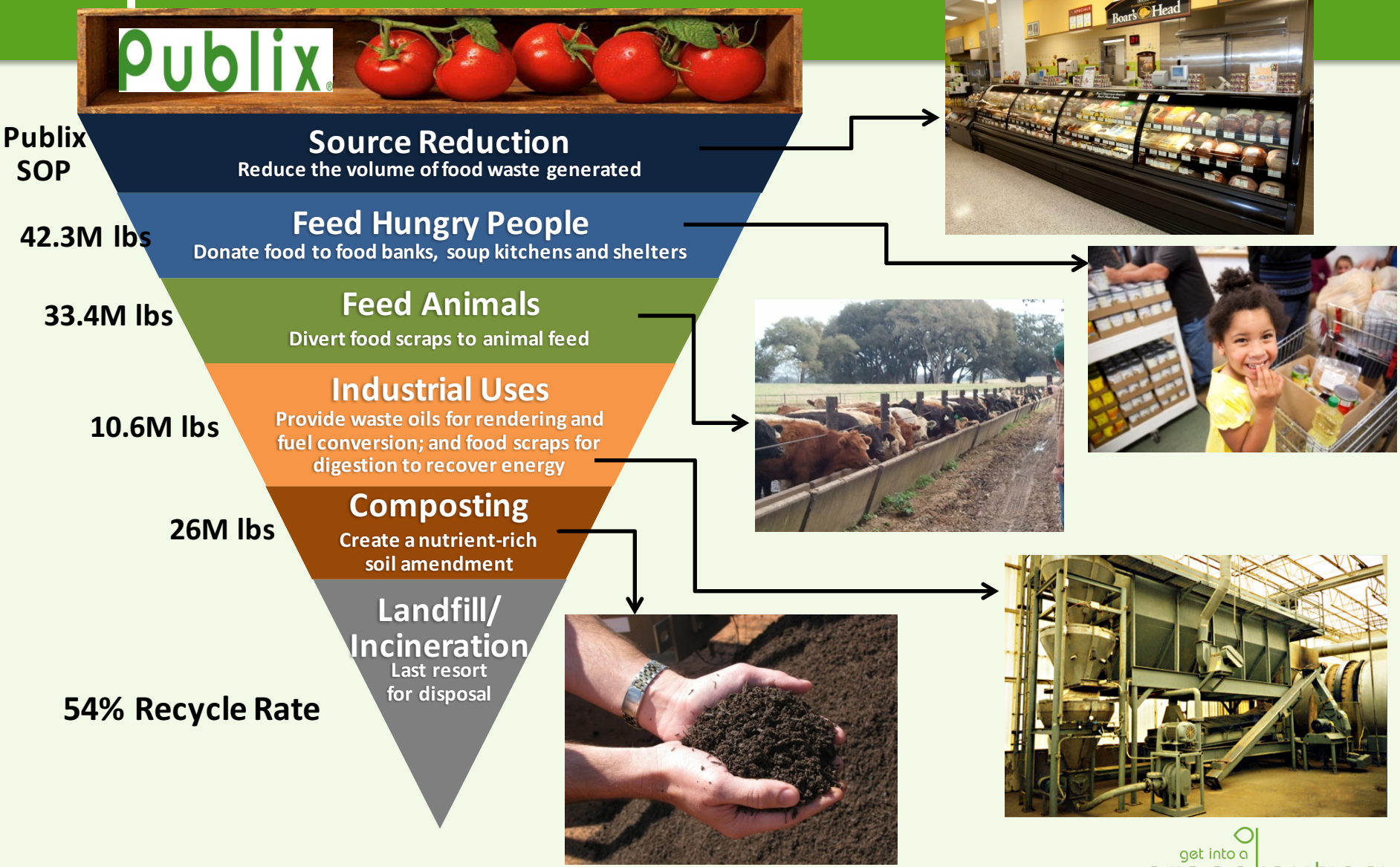
**BACKROOM**

Get into a green routine  
**Publix**

Printed with environmentally friendly, non-toxic ink on recycled stock.

get into a  
**greenroutine**  
Publix

# Impact of Diverting Food Waste





**Kim Brunson**  
**Recycle & SW Program Mgr**  
**[kim.brunson@publix.com](mailto:kim.brunson@publix.com)**  
**863-688-1188x55916**