

Region 1 – Petition Response – Attachment A

Table 1-Rainfall data Reagan Airport<sup>1</sup>

<b>REAGAN NATIONAL AIRPORT (1998-2002)</b>			
<b>Precipitation depth, inches</b>	<b>count</b>	<b>Cumulative count</b>	<b>Percentage</b>
0-0.3	1634	1634	89.44%
0.3-0.5	59	1693	3.23%
0.5-1	97	1790	5.31%
1-1.5	24	1814	1.31%
1.5-2	10	1824	0.55%
2-2.5	2	1826	0.11%
2.5-3	0	1826	0.00%
3-3.5	0	1826	0.00%
>=3.5	1	1827	0.05%

Table 2 – Rainfall Data Logan Airport

<b>LOGAN AIRPORT - BOSTON, MA (1998-2002)</b>			
<b>Precipitation depth, inches</b>	<b>count</b>	<b>Cumulative count</b>	<b>Percentage</b>
0-0.3	1609	1609	88.07%
0.3-0.5	78	1687	4.27%
0.5-1	93	1780	5.09%
1-1.5	22	1802	1.20%
1.5-2	11	1813	0.60%
2-2.5	8	1821	0.44%
2.5-3	1	1822	0.05%
3-3.5	3	1825	0.16%
>=3.5	2	1827	0.11%

Table 3 – Comparison Annual Average Rainfall Boston and Washington, DC

<b>Average annual rainfall, inches</b>		
	<b>Logan</b>	<b>Reagan</b>
1998	52.9	33.3
1999	39.6	40.0
2000	50.1	39.3
2001	34.7	29.9
2002	45.4	33.4
Average	44.5	35.2

<sup>1</sup> National Climate Center

Table 4 – Comparison Average Intermittent Dry Periods – Boston and Washington, DC

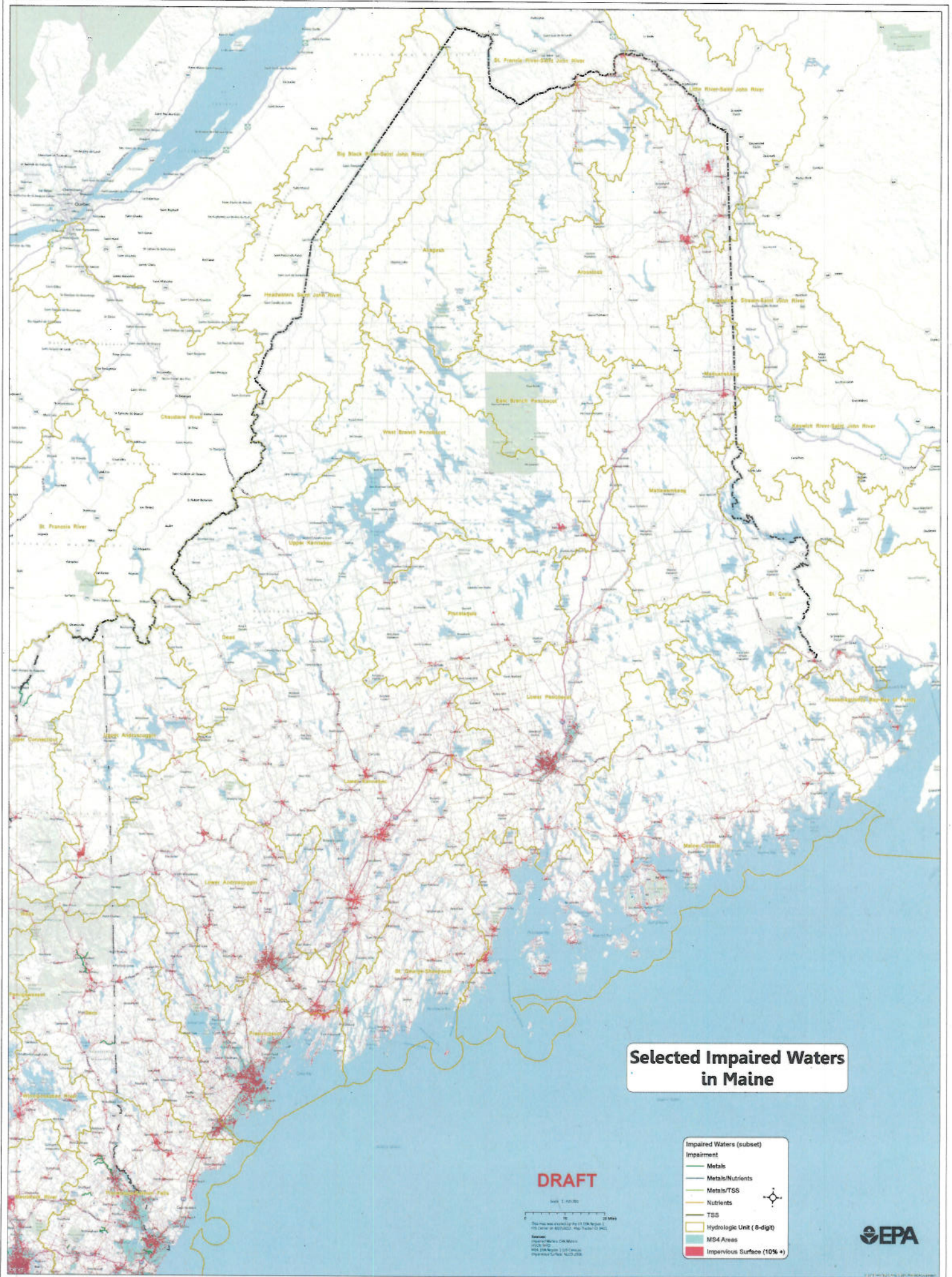
Average intermittent dry period, days		
	<b>Logan</b>	<b>Reagan</b>
1998	4.0	5.1
1999	4.0	4.2
2000	3.3	4.0
2001	3.9	4.5
2002	3.3	4.6
Average	3.7	4.5

## Region 1 Petition Response - Attachments B – I

### Maps:

- B – Maine with MS4 boundaries
- C – Maine without MS4 boundaries
- D – Massachusetts with MS4 boundaries
- E – Massachusetts without MS4 boundaries
- F – New Hampshire/Vermont with MS4 boundaries
- G- New Hampshire/Vermont without MS4 boundaries
- H – Connecticut/Rhode Island with MS4 boundaries
- I- Connecticut/Rhode Island without MS4 boundaries

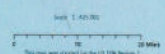




**Selected Impaired Waters  
in Maine**

- Impaired Waters (subset)
- Impairment
  - Metals
  - Metals/Nutrients
  - Metals/TSS
  - Nutrients
  - TSS
- Hydrologic Unit (8-digit)
- MS4 Areas
- Impervious Surface (10%+)

**DRAFT**

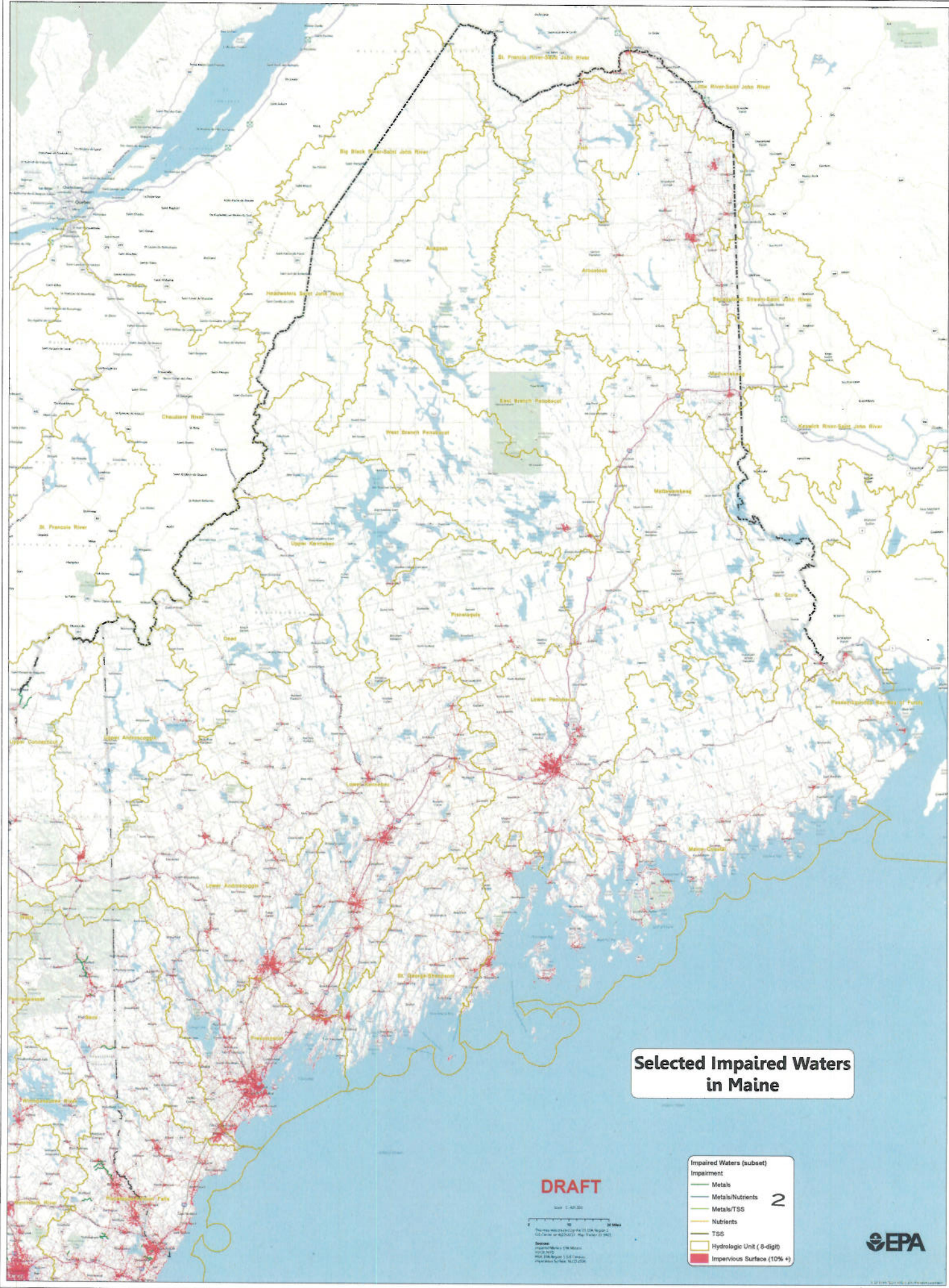


This map was created by the USEPA Region 1  
GIS Center at 600 South Main Street, Portland, ME 04101  
Date: 10/20/2010  
Map Scale: 1:100,000  
Impervious Surface: 10/20/2010





C



**Selected Impaired Waters in Maine**

**DRAFT**

Scale: 1:40,000  
 The map was prepared by the US EPA Region 1  
 U.S. Office at 800/233-7461, Map Update 07/2011  
 Date: 07/2011  
 Project: Maine 104 Waters  
 Map: 104 Waters 1.04/104  
 Information for Map: 104/104

**Impaired Waters (subset)**

- Impairment
- Metals
- Metals/Nutrients
- Metals/TSS
- Nutrients
- TSS
- Hydrologic Unit ( 8-digit)
- Impervious Surface (10% +)

2









# Selected Impaired Waters in Massachusetts

**Impaired Waters (subset)**

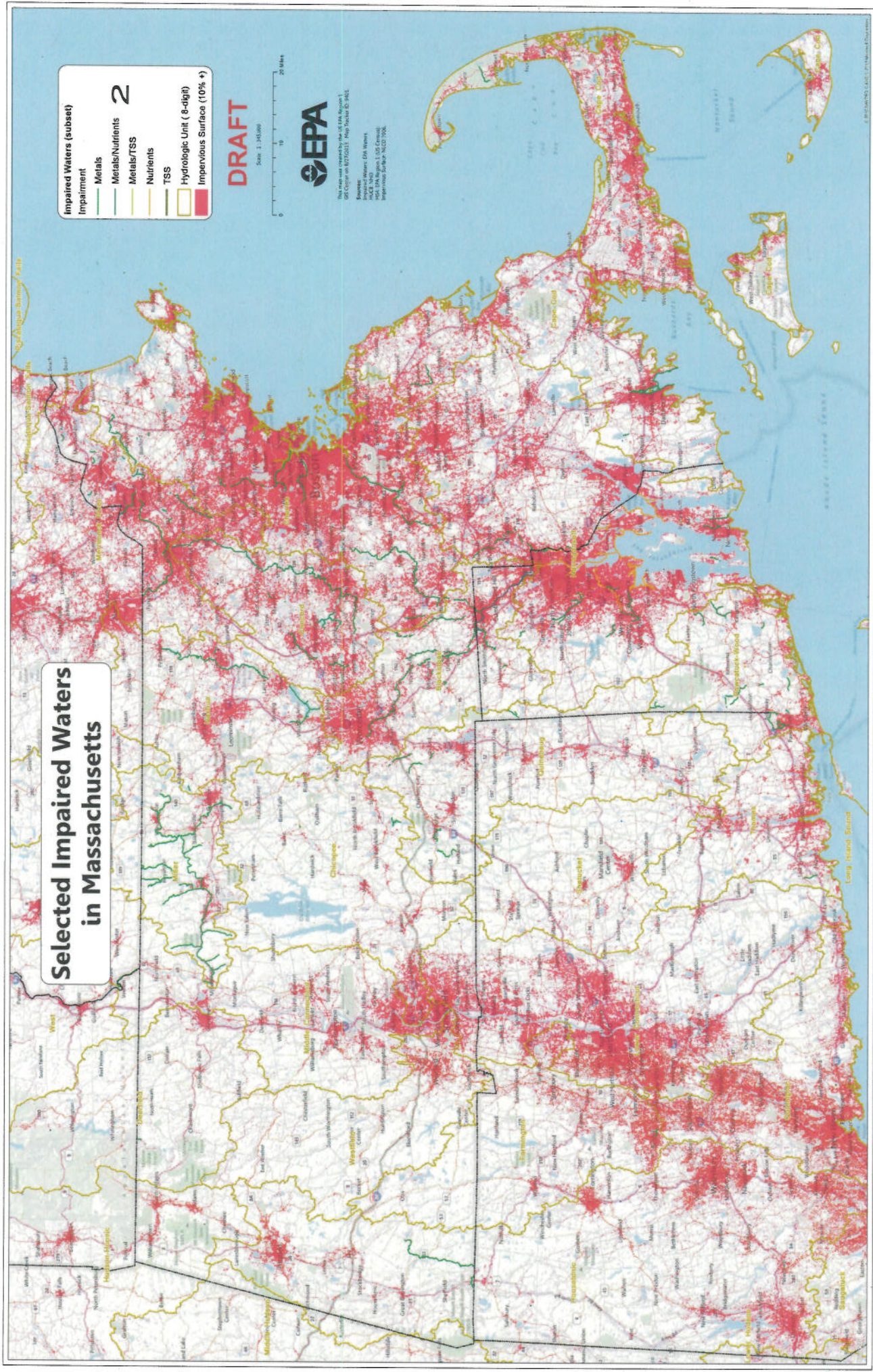
- Impairment
- Metals
- Metals/Nutrients
- Metals/TSS
- Nutrients
- TSS
- Hydrologic Unit ( 6-digit)
- Impervious Surface (10% +)

**2**

**DRAFT**



This map was created by the US EPA Region 1  
GIS Center on 07/20/12. Map Project ID: 9812  
Source: Various GIS sources  
Scale: 1:500,000  
Impervious Surface: 10% +



17



# Selected Impaired Waters in Vermont and New Hampshire

**DRAFT**



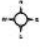
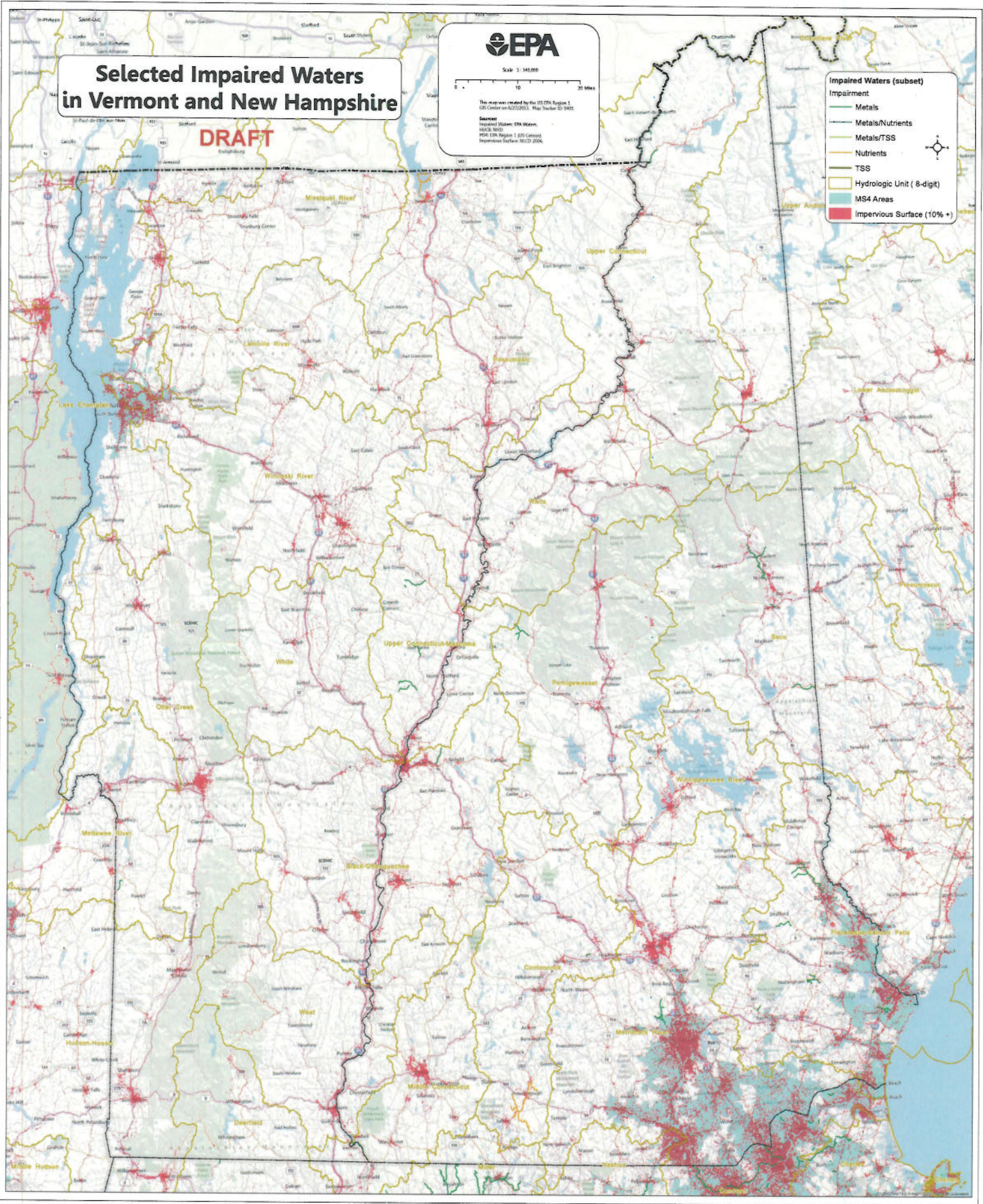
Scale 1:100,000

The map was created by the US EPA, Region 1  
GIS Center on 02/27/2013. Map Tracker ID: 9455

Source:  
Impaired Waters: EPA Waters  
HUCs: 1010  
MS4: EPA Region 1 GIS Center  
Impervious Surface: NLCD 2006

**Impaired Waters (subset)**

- Impairment
  - Metals
  - Metals/Nutrients
  - Metals/TSS
  - Nutrients
  - TSS
- Hydrologic Unit ( 8-digit)
- MS4 Areas
- Impervious Surface (10%+)



# Selected Impaired Waters in Vermont and New Hampshire

## DRAFT



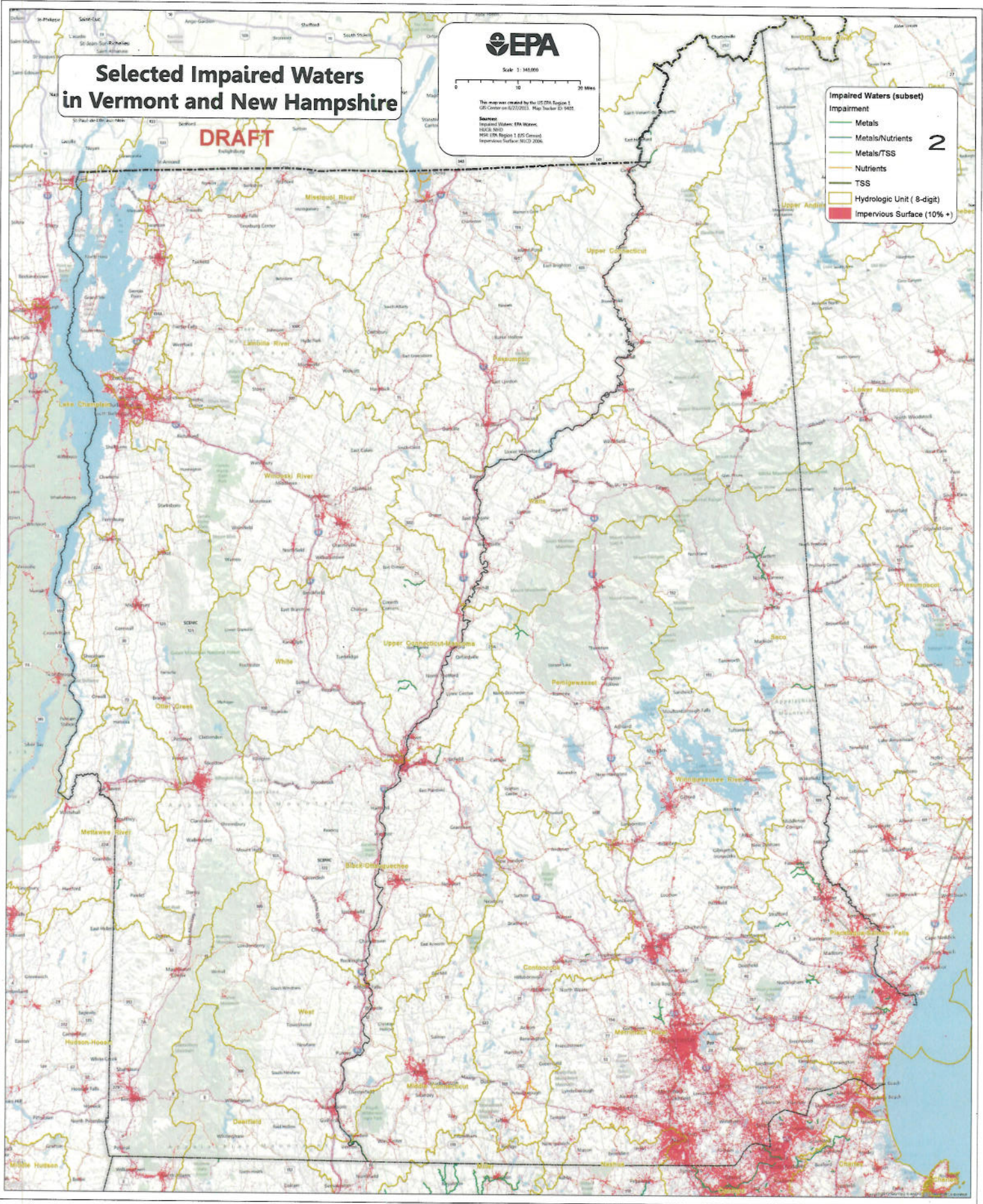
Scale: 1:140,000

The map was created by the US EPA Region 1 GIS Center on 02/27/2013. Map Number: ES 9455.

**Impaired Waters (subset)**

- Impairment
- Metals
- Metals/Nutrients
- Metals/TSS
- Nutrients
- TSS
- Hydrologic Unit ( 8-digit)
- Impervious Surface (10% +)

2

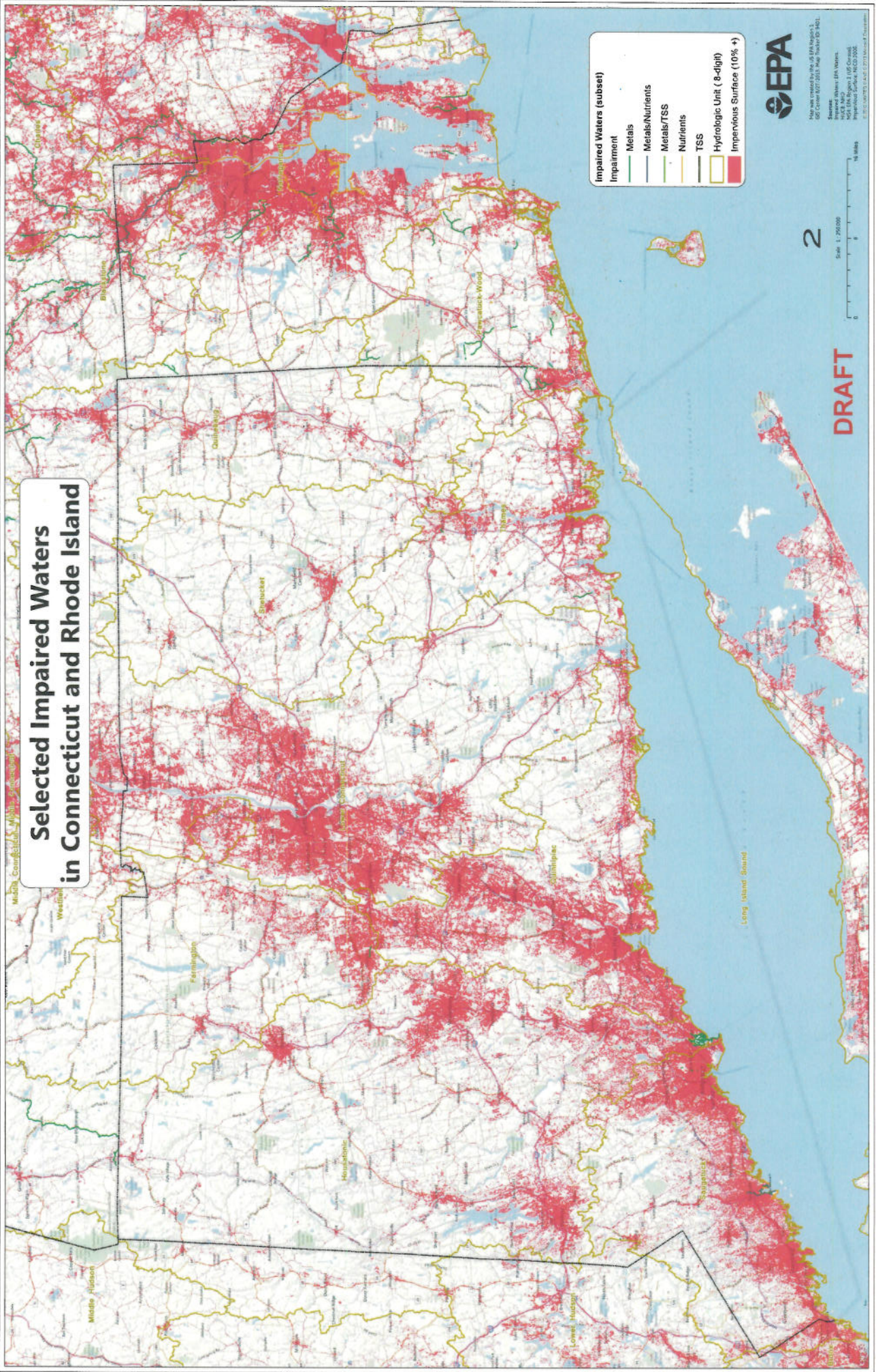








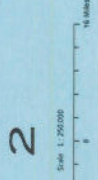
# Selected Impaired Waters in Connecticut and Rhode Island



- Impaired Waters (subset)
- Impairment
- Metals
- Metals/Nutrients
- Metals/TSS
- Nutrients
- TSS
- Hydrologic Unit ( 8-digit)
- Impervious Surface (10% +)



Map was created by the US EPA Region 1  
GIS Center (617) 233-7400, Project ID: 1022  
Impaired Waters: EPA Waters  
Hydrologic Unit: USGS  
Impervious Surface: USGS  
Map Date: 12/17/2013



2

**DRAFT**

H