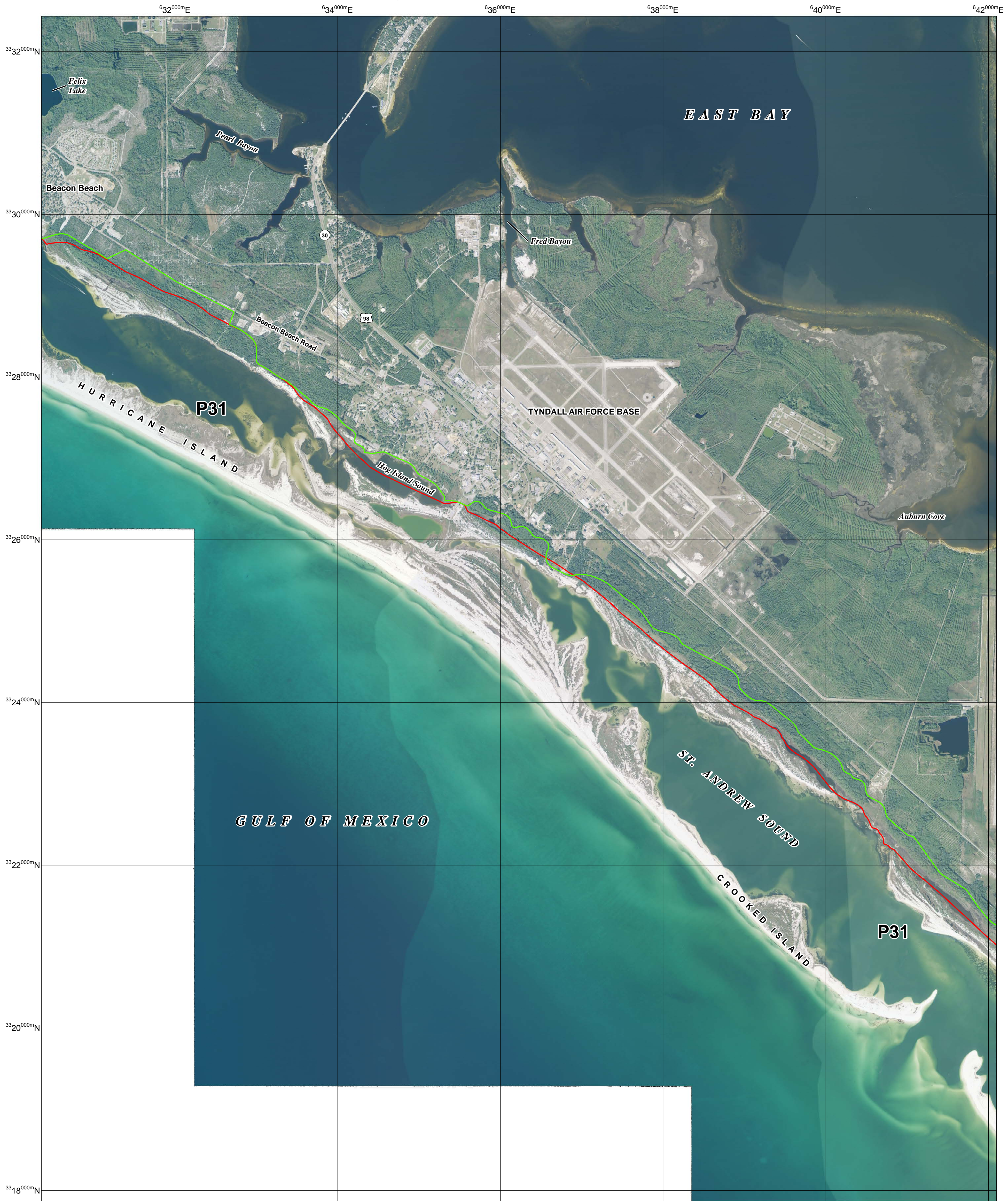


Existing and Proposed Boundaries



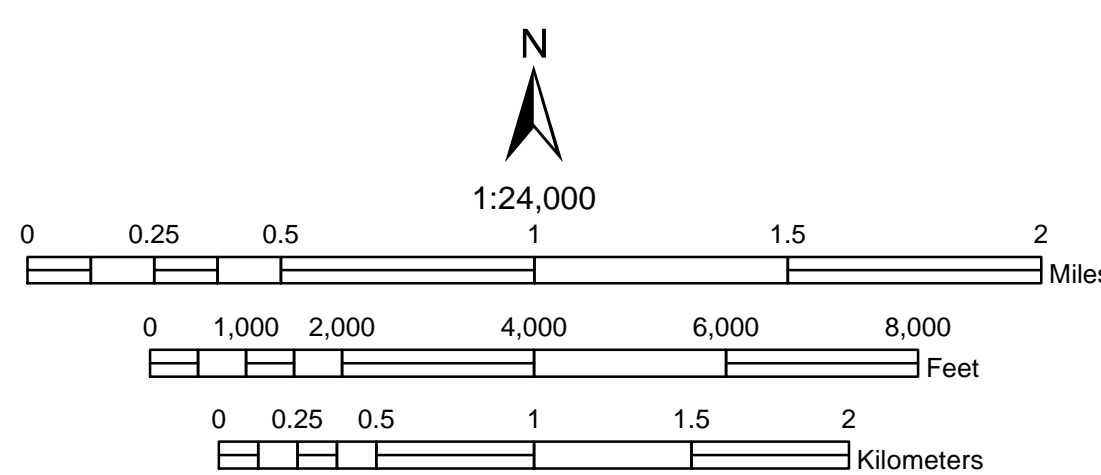
JOHN H. CHAFEE COASTAL BARRIER RESOURCES SYSTEM

St. Andrew Complex P31 (2 of 3)

This draft map was produced by the U.S. Fish and Wildlife Service to show proposed boundary changes to the John H. Chafee Coastal Barrier Resources System (CBRS) as directed by Section 4 of the Coastal Barrier Resources Reauthorization Act of 2005 (Public Law 109-226).

The seaward side of the CBRS unit includes the entire sand-sharing system, including the beach and nearshore area. The sand-sharing system of coastal barriers is normally defined by the 30-foot bathymetric contour. In large coastal embayments and the Great Lakes, the sand-sharing system is defined by the 20-foot bathymetric contour or a line approximately one mile seaward of the shoreline, whichever is nearer the coastal barrier.

For additional information about the Coastal Barrier Resources Act (CBRA) or the CBRS, please visit www.fws.gov/cbra.



- Existing System Unit Boundary
- - - Existing Otherwise Protected Area (OPA) Boundary; OPAs are identified on the map by the letter "P" following the unit number
- Proposed System Unit Boundary
- - - Proposed Otherwise Protected Area (OPA) Boundary; OPAs are identified on the map by the letter "P" following the unit number
- - - - - Approximate State Boundary

$36^{\circ}4^{\prime}00^{\prime\prime}$ N 2000-meter Universal Transverse Mercator grid values
 Imagery Date: 2013
 Imagery Source: United States Department of Agriculture National Agriculture Imagery Program
 Coordinate System: Universal Transverse Mercator Zone 16 North North American Datum 1983

May 16, 2016