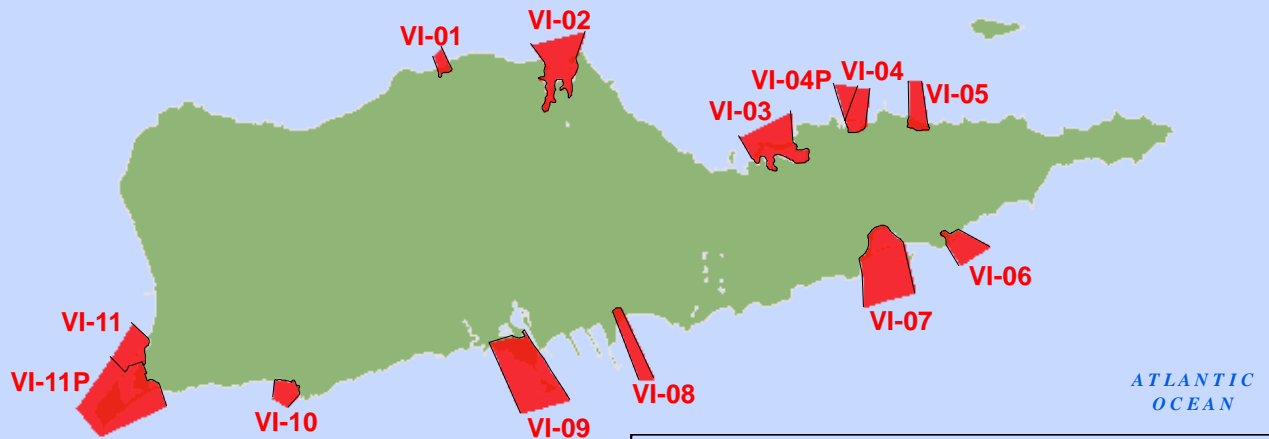


JOHN H. CHAFEE COASTAL BARRIER RESOURCES SYSTEM VIRGIN ISLANDS



St. Thomas and St. John Islands

St. Croix Island



Number of CBRS Units:	37
Number of System Units:	24
Number of Otherwise Protected Areas:	13
Total Acres:	3,888
Upland Acres:	1,186
Associated Aquatic Habitat Acres:	2,702
Shoreline Miles:	22

Boundaries of the John H. Chafee Coastal Barrier Resources System (CBRS) shown on this map were transferred from the official CBRS maps for this area and are depicted on this map (in red) for informational purposes only. The official CBRS maps are enacted by Congress via the Coastal Barrier Resources Act, as amended, and are maintained by the U.S. Fish and Wildlife Service. The official CBRS maps are available for download at http://www.fws.gov/habitatconservation/coastal_barrier.html.