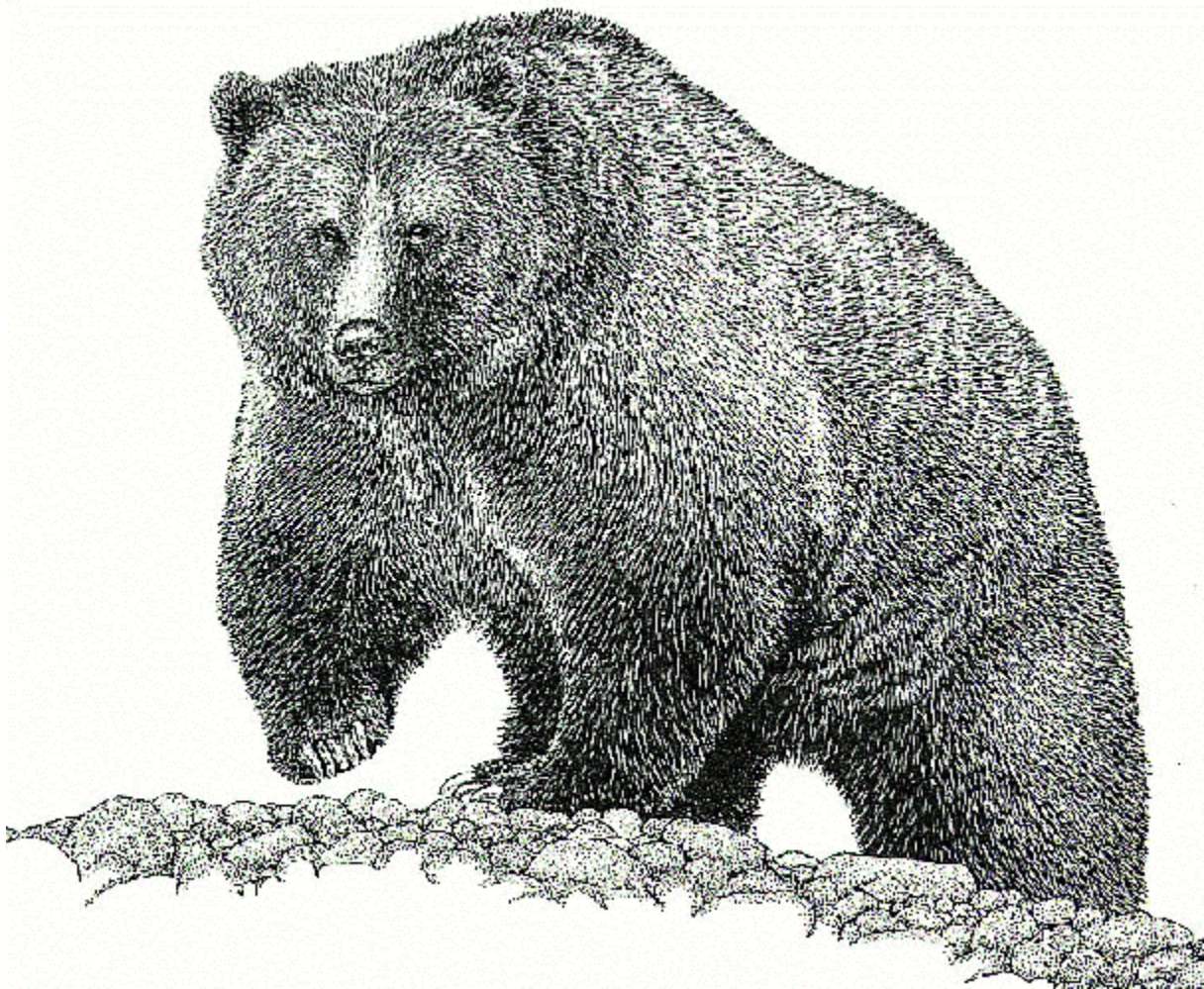


CABINET-YAAK GRIZZLY BEAR RECOVERY AREA 2002 RESEARCH AND MONITORING PROGRESS REPORT



PREPARED BY
WAYNE F. KASWORM, HARRY CARRILES, and THOMAS G. RADANDT
2003

UNITED STATES FISH AND WILDLIFE SERVICE
GRIZZLY BEAR RECOVERY COORDINATOR'S OFFICE
UNIVERSITY OF MONTANA, MAIN HALL ROOM 309
MISSOULA, MONTANA 59812
(406) 243-4903

Information contained in this report is preliminary and subject to change. Please obtain permission prior to citation. Please cite this report as following:

Kasworm, W. F., H. Carriles, and T. G. Radandt. 2003. Cabinet-Yaak grizzly bear recovery area 2002 research and monitoring progress report. U.S. Fish and Wildlife Service, Missoula, Montana. 52 pp.

Abstract:

Grizzly bear research in the Cabinet Mountains indicated that only a small population remained as of 1988. Furthermore it was believed that this population would not persist unless intensive management steps were taken. An effort to augment this population with subadult female grizzly bears began in 1990. Four subadult female bears with no history of conflicts with humans were captured in southeast British Columbia and moved to the Cabinet Mountains for release during 1990-94. Three of four transplanted bears remained within the target area for at least one year. One bear left the target area, but was recaptured and returned to the target area. One bear died the year following release while accompanied by a cub. The cub was not located and likely died. Though the cause of death was unknown, it was not believed to be human related. None of the transplanted bears were still wearing a functional radio collar by the end of 1995. Several sightings of individual grizzly bears and females with young have occurred since completion of population augmentation, however we were unable to determine if any of these animals were the transplanted bears or their offspring.

Twenty-six grizzly bears and 281 black bears were captured from 1986-02 in the Yaak River drainage. Mean trap nights per individual grizzly bear captured were 222 and mean trap nights per individual black bear captured were 21. Six grizzly bears and 267 black bears were captured from 1983-02 in the Cabinet Mountains. Mean trap nights per individual grizzly bear captured were 951 and mean trap nights per individual black bear captured were 21. Annual and life range adaptive kernel and minimum convex polygon grizzly bear home ranges are reported.

Numbers of females with cubs in the Cabinet-Yaak recovery zone varied from 0-4 per year and averaged 1.7 per year from 1997-02. Six known human caused mortalities of grizzly bears have occurred in the recovery zone or within 10 miles since 1997. Human caused mortality averaged 1.0 total bears per year and 0.8 females per year during 1997-02. Human caused mortalities were an adult male (management removal), a presumed adult female (train collision), and 4 subadult females (1 self-defense, 2 illegal under investigation and a black bear mistaken identity). Since 1997 there have been 9 known natural mortalities. An adult female with 2 cubs died of natural causes in 1999, 5 cubs died of assumed natural causes in 2000 and 2001, and a yearling female died of natural causes in 2002. Thirteen of 22 bear management units had sightings of females with young during 1997-02. A population estimate of 20-30 bears was made for the Yaak portion of the recovery zone based on captures and sightings of unique individuals. The 1988 population estimate for the Cabinet Mountains remains unchanged at 15 or fewer (Kasworm and Manley 1988). We conservatively estimate the population of the Cabinet-Yaak grizzly bear recovery zone at 30-40 grizzly bears.

Grizzly bear use of elevation, aspect and vegetation type was analyzed for seasonal trends. Huckleberry, buffaloberry, and serviceberry berry count transects indicated generally low production during 1998-2002.

TABLE OF CONTENTS

PAGE

Abstract.....	2
Table of Contents.....	3
Introduction.....	4
Objectives.....	5
Study Area.....	6
Methods.....	8
Grizzly Bear Observations.....	8
Capture and Marking.....	8
Hair Sampling for DNA Analysis.....	9
Radio Monitoring.....	10
Berry Transects.....	10
Results and Discussion.....	10
Grizzly Bear Observations and Recovery Plan Criteria.....	10
Trapping.....	16
Cabinet Mountains Research and Population Augmentation.....	16
Yaak River Research.....	16
Hair Sampling for DNA Analysis.....	19
Grizzly Bear Monitoring.....	19
Monitoring Summary of Each Adult Female.....	20
Cabinet Mountains Native Adult Female Bears.....	20
Cabinet Mountains Transplanted Bears.....	20
Yaak Drainage Adult Female Bears.....	21
Grizzly Bear Home Ranges.....	23
Grizzly Bear Denning Chronology.....	34
Grizzly Bear Use of Habitat Components.....	34
Grizzly Bear Use by Elevation.....	38
Grizzly Bear Use by Aspect.....	39
Grizzly Bear Spring Habitat Description.....	41
Grizzly Bear Population and Mortality.....	41
Grizzly Bear Population Trend Estimate.....	43
Huckleberry Production.....	44
Buffaloberry Production.....	45
Serviceberry Production.....	46
Mountain Ash Production.....	46
Acknowledgments.....	47
Literature Cited.....	47
Other Publications or Reports Involving this Research Program.....	49
Appendix 1 Necropsy Report on Grizzly Bear 577.....	50
Appendix 2 Description of Habitat Components.....	51

INTRODUCTION

Grizzly bear (*Ursus arctos*) populations south of Canada are currently listed as Threatened under the terms of the 1973 Endangered Species Act (16 U.S.C. 1531-1543). In 1993 a revised Recovery Plan for grizzly bears was adopted in which specific measures to aid recovery were identified (USFWS 1993). Six areas were identified in the Recovery Plan as ecosystems in which grizzlies were thought or known to occur (Fig. 1). One area identified was the Cabinet-Yaak Grizzly Bear recovery zone (CYGBRZ) of extreme northwestern Montana and northeast Idaho. This area lies directly south of Canada and encompasses approximately 6800 km². The Kootenai River bisects the area with the Cabinet Mountains portion to the south and the Yaak River portion to the north. The degree of grizzly bear movement between the two portions is unknown but thought to be minimal. The Fish and Wildlife Service issued a 12-month finding of warranted for endangered status but precluded by other listing actions on February 12, 1993 (58 FR 8250-8251).

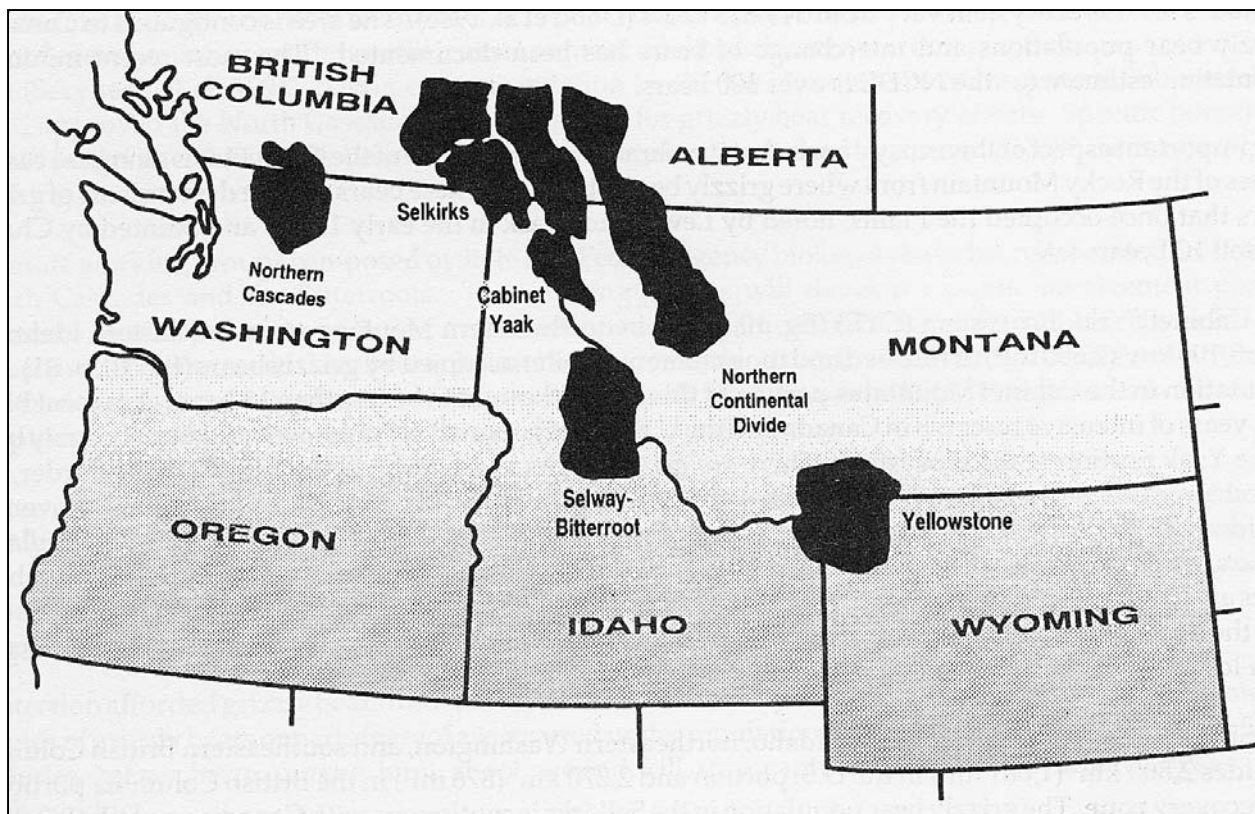


Figure 1. Grizzly bear recovery areas in the U.S., southern British Columbia, and Alberta, Canada.

Research on native grizzly bears began south of the Kootenai River during the late 1970's. Erickson (1978) reported the results of a survey he conducted for bears and their sign in the Cabinet Mountains and concluded the population consisted of approximately a dozen animals. A trapping effort in 1979 and 1980 in the same area failed to capture a grizzly bear, but a female and yearling were observed (Thier 1981). In 1983 trapping efforts were resumed

and intensified (Kasworm and Manley 1988). Three individual grizzly bears were captured and radio-collared during 1983-1987. Minimal reproduction was observed during the period and the population was believed to be declining toward extinction. To reverse this trend, a formal plan was proposed in 1987 to augment the Cabinet Mountains portion of the population with subadult female bears from outside the area (USFWS 1990, Servheen et al. 1987).

Two approaches for augmenting grizzly bears were proposed. The first involved transplanting adult or subadult grizzly bears from other areas of similar habitat to the Cabinet Mountains. Transplants would involve bears from remote areas that would have no history of conflict with humans. The use of subadult females was recommended because of their smaller home ranges and potential reproductive contribution. The second approach relied on the cross fostering of grizzly bear cubs to black bear (*Ursus americanus*) females. Under this approach, grizzly bear cubs from zoos would be placed in the maternal dens of black bear females during March or April. The fostering of orphaned black bear cubs to surrogate black bear females has been used successfully in several areas (Alt and Beecham 1984, Alt 1984).

During public review, many concerns were expressed which included: human safety, conflicts with other land-uses, and long-term grizzly bear population goals. A citizens involvement committee was formed to aid information exchange between the public and the agencies. Representatives of several local organizations donated their time to further this purpose. The first product of this group was a question and answer brochure regarding grizzly bears in the CYGBRZ. This brochure was mailed to all box holders in Lincoln and Sanders counties. In response to concerns expressed by the committee, the augmentation proposal was modified to eliminate cross fostering and to reduce total numbers of transplanted bears to four individuals over five years. The beginning date of augmentation was also postponed for one year to allow additional public information and education programs.

Prior to 1986, little work was conducted on grizzly bears in the Yaak River portion of the CYGBRZ. Bears that used the area were thought to be largely transitory from Canada. However, a study on black bears in the Yaak River drainage in 1986 and 1987 resulted in the capture and radio-collaring of five individual grizzly bears (Thier 1990). Several other unmarked grizzly bears were known to use the area.

The Yaak River area has traditionally been an important source of timber for area mills, with timber harvesting the dominant use of the area. A pine beetle (*Dendroctonus ponderosae*) epidemic began in the mid 1970's. Large stands of lodgepole pine (*Pinus contorta*) were infected, which resulted in an accelerated timber harvesting program with clearcutting the dominant silvicultural technique. A concern of environmental degradation, as well as the effects of timber harvesting on the local grizzly bear population, prompted a lawsuit against the Forest Service by a local citizen's group in 1983 (USFS 1989). To obtain additional information on the population status and habitat needs of grizzlies using the area, the U.S. Forest Service and Montana Department of Fish, Wildlife, and Parks cooperated with the U.S. Fish and Wildlife Service in initiating a long term study, with field work begun in June of 1989.

OBJECTIVES

A. Cabinet Mountains Population Augmentation:

Test grizzly bear augmentation techniques in the Cabinet Mountains to determine if transplanted bears will remain in the area of release and ultimately contribute to the population through reproduction.

B. Recovery Zone Research and Monitoring:

1. Document grizzly bear distribution in the Cabinet/Yaak Grizzly Bear Ecosystem.
2. Describe and monitor the grizzly bear population in terms of reproductive success, age structure, mortality causes, population trend, and estimates of numbers of bears.
3. Determine habitat use and movement patterns of grizzly bears in the area. Determine habitat preference by season and assess the relationship between habitats affected by man such as logged areas and grizzly bear habitat use. Determine seasonal movement patterns of grizzly bears and movement between the Cabinet Mountains south of the Kootenai River and the Yaak area to the north of the Kootenai river.
4. Determine the relationship between human activity and grizzly bear habitat use through the identification of areas used more or less than expected in relation to ongoing timber management activities, open and closed roads, and human residences.
5. Suggest management techniques to limit human-caused mortality of grizzly bears.
6. Provide data in a format that could be integrated in the Selkirk/Cabinet-Yaak Cumulative Effects Model (USFS et al. 1988).
7. Conduct black bear studies incidental to grizzly bear investigations to determine interspecific relations. Data on black bear densities, reproduction, mortality, movements, habitat-use, and food habits relative to grizzly bears will be gathered and analyzed.

STUDY AREA

The CYGBRZ (48° N, 116° W) encompasses about 6,800 km² of northwest Montana and northern Idaho (Fig. 2). The Cabinet Mountains are about 58% of the CYGBRZ and lie south of the Kootenai River, while the Yaak River borders Canadian grizzly populations to the north. Two 12 km wide corridors link the Yaak with the Cabinet Mountains. Approximately 90% of the recovery area is on public land administered by the Kootenai, Lolo, and Panhandle National Forests. Plum Creek Timber Company Inc. is the main corporation holding a significant amount of land in the area. Individual ownership exists primarily along the major rivers, and there are numerous patented mining claims along the Cabinet Mountains Wilderness boundary. The Cabinet Mountains Wilderness encompasses 381 km² of the higher elevations of our study area in the Cabinet Mountains. Libby, Troy, Thompson Falls, Noxon, and Trout Creek are the primary communities adjacent to the East Cabinet Mountains.



Figure 2. Cabinet-Yaak recovery zone.

Elevations in the Cabinet Mountains range from 610 m along the Kootenai River to 2,664 m at Snowshoe Peak. The area has a Pacific maritime climate characterized by short, warm summers and heavy, wet winter snowfalls. Lower, drier slopes support stands of ponderosa pine (*Pinus ponderosa*) and Douglas-fir (*Pseudotsuga menziesii*), whereas grand fir (*Abies grandis*), western red cedar (*Thuja plicata*), and western hemlock (*Tsuga heterophylla*) dominate lower elevation moist sites. Subalpine fir (*Abies lasiocarpa*), spruce (*Picea spp.*), and mountain hemlock (*Tsuga mertensiana*) dominate stands between 1,500 m and timberline. Mixed coniferous and deciduous tree stands are interspersed with riparian shrubfields and wet meadows along major drainages. Huckleberry (*Vaccinium spp.*) and mixed shrubfields are partially a result of wildfires that occurred in 1910 and 1929. Effective fire suppression has reduced wildfires as a natural force creating or maintaining berry-producing shrubfields.

The Yaak River lies in the extreme northwestern corner of Montana, northeastern Idaho, and southern British Columbia and is bounded on the east and south by Lake Koochanusa and the Kootenai River, to the west by the Moyie River, and to the north by the international boundary. Two north-south trending mountain ranges dominate the landscape - the McGillivray range in the east and the Purcell range to the west. Topography is varied, with rugged, alpine glaciated peaks present in the Northwest Peaks Scenic Area. Rounded peaks and ridges cover most of the remaining area, a result of continental glaciation. Coniferous forests dominate, with cutting units the primary source of diversity. Much of the Yaak River is low gradient and the river tends to meander, creating lush riparian zones and meadows. Elevations range from 550 m at the confluence of the Kootenai and Moyie Rivers to 2348 m atop Northwest Peak. Climate is dominated by Pacific Maritime weather patterns that produce 100-150 cm of annual precipitation, which occurs primarily as snow. Vegetation is diverse, with an overstory of western hemlock and western red cedar the indicated climax species on much of the study area. Ponderosa pine and Douglas-fir are common at lower elevations on south and western slopes. Subalpine fir and spruce dominate the upper elevations and cirque basins. Large stands of lodgepole pine and western larch (*Larix occidentalis*) occur at mid and upper elevations and are largely the result of extensive wildfires in the past.

Understory and non-forested habitats include graminoid parks consisting primarily of fescue (*Festuca spp.*) and bluebunch wheatgrass (*Agropyron spicatum*), which occur at moderate to high elevations. Riparian shrubfields of red-osier dogwood (*Cornus stolonifera*) and hawthorn (*Crataegus douglasii*) are prevalent along major drainages. Buffaloberry (*Shepherdia canadensis*) is common under stands of open lodgepole pine while serviceberry (*Amelanchier alnifolia*) and chokecherry (*Prunus virginiana*) prevail on drier, rockier sites. Huckleberry shrubfields are often found under open timber canopies adjacent to graminoid parks, in old burns, in cutting units, and intermixed with beargrass (*Xerophyllum tenax*).

Trapping for Cabinet Mountains population augmentation was conducted in the upper North Fork of the Flathead River drainage and the Wigwam River drainage in British Columbia, approximately 10-40 km north of the U.S. border during 1990-1994. During 1992 trapping was conducted south of the international border in the North Fork of the Flathead River. Subalpine fir was the indicated climax species throughout most of the area, with lodgepole pine the most prevalent. Recent wildfires in upper elevations have had more influence on habitat than in the CYGBRZ. An outbreak of pine bark beetles resulted in logging large areas at lower elevations during the 1980's. Large portions of upper elevations had been logged earlier in response to a spruce bark beetle (*Dendroctonus obesus*) epidemic. Although open road density was high, very little public use was observed. Grizzly bears are considered an important game animal in this portion of British Columbia and are hunted under a system of limited entry.

METHODS

Grizzly Bear Observations

All grizzly bear observations and reports of sign (tracks, digs, etc.) by study personnel and the public were recorded. A database file on grizzly bear sightings and sign for the area (Kasworm and Manley 1988) was expanded. Grizzly bear sighting forms were sent to a variety of field personnel from different agencies to maximize the number of reports received. Sightings of grizzly bears are rated 1-5 with 5 being the best quality and 1 being the poorest. General definitions of these categories are presented below, but it is difficult to describe all circumstances under which sightings are reported. Sightings receiving ratings of 4 or 5 are the only ones used in reports. Sightings that rate 1 or 2 may not even be recorded in the database in all instances.

5 - Highest quality reports typically from study personnel or highly qualified observers. Sightings not obtained by highly qualified observers must have physical evidence such as pictures, track measurements, hair, or sightings of marked bears where marks are accurately described.

4 - Good quality reports that provide credible, convincing descriptions of grizzly bears or their sign. Typically these reports include a physical description of the animal mentioning several characteristics. The observer had sufficient observation time and was close enough or had binoculars to aid in identification. Observer demonstrates sufficient knowledge of identification characteristics to be regarded as a credible observer. Background or experience of observer may influence credibility.

3 - Moderate quality reports that do not provide convincing descriptions of grizzly bears. Reports may mention 1 or 2 characteristics, but the observer does not demonstrate sufficient knowledge of characteristics to make a reliable identification. Observer may have gotten a quick glimpse of the bear or been too far away for a good quality observation.

2 - Lower quality observations that provide little description of the bear other than the observer's judgment that it was a grizzly bear.

1 - Lowest quality observations of animals that may not have been grizzly bears. May also involve second hand reports from other than the observer.

Capture and Marking

Bears were captured with leg-hold snares following the techniques described by Johnson and Pelton (1980) and Jonkel (1993). The snares were manufactured by Aldrich Snare Co. (Clallam Bay, WA) and consist of 6.5 mm braided steel aircraft cable. All bears were immobilized with Telazol (tiletamine hydrochloride) or a drug mixture of Ketaset (ketamine hydrochloride) and Rompun (xylazine hydrochloride). Drugs were administered intramuscularly with a syringe mounted on a pole (jab-stick), a homemade blowgun, a modified air pistol or a Palmer Cap-chur gun. Immobilized bears were measured, weighed, and a first premolar tooth was extracted for age determination (Stoneberg and Jonkel 1966). Blood and hair samples were taken from most bears for genetic studies.

Each bear was marked with an individually numbered ear tag in each ear. Attached to each ear tag was a 4 X 13 cm streamer of rubberized fabric (Armatite or Ritcey Material). The color of the streamers varied by species and the year in which the animal was captured. The use of ear streamers was discontinued in 1998. All grizzly bears and some adult black bears (≥ 4.0 years old) were fitted with radio collars or ear tag transmitters when captured. Collars were manufactured by Telonics (Mesa, AZ) and ear tag transmitters were manufactured by Advanced Telemetry Systems (Isanti, MN). To prevent permanent attachment, a canvas or polypropylene spacer was placed in the collars so that they would drop off in 1-3 years (Hellgren et al. 1988).

Trapping efforts were conducted during spring (prior to mid-July) in 1986-87, and 1989-93. The spring trapping effort of 1989 did not begin until mid-June. Fall trapping efforts (early September to mid-October) were conducted in 1986, 1989-90, and 1992-94. In 1986-87, snares were placed in areas where the number of black bear captures might be maximized on a defined study area of 214 km² (Thier 1990). Snares were placed over a much broader area during 1989-94 and an effort was made to maximize the number of grizzly bear captures. Trap sites were usually located within 200 m of an open road to allow vehicle access. Beginning in 1995, an effort was made to capture and recollar known bears in the Yaak and augmentation bears in the Cabinet Mountains. Much of the trapping effort involved the use of horses on backcountry trails and behind gates on closed logging roads. Two person crews checked snares daily. Bait consisted primarily of road-killed ungulates and other meat scraps.

Trapping for population augmentation was conducted in the North Fork of the Flathead River in British Columbia. Only unmarked female grizzly bears < 6 years old (or prior to first reproduction) and > 35 kg were deemed suitable for transplant. All other captured grizzly bears were released with some collared to aid an ongoing bear study in British Columbia.

Hair Sampling for DNA Analysis

In 1998 hair snagging stations were set up in the Cabinet Mountains to collect hair samples from the resident population and bears that were transplanted from Canada. Stations were established in front country locations accessible by truck as well as backcountry locations accessible by horseback. Each station consisted of a single strand of barbed wire fence attached to trees approximately 50 cm above the ground. Within the enclosed area, bait (two gallons of blood and body fluids from road-killed deer) was placed to attract bears across the wire and leave a hair sample. Each site was revisited after ten days and the wire was removed. Each hair sample was removed, recorded, and stored for future identification. Similar methods were used in 2002 with the addition of a motion sensitive camera mounted on a tree within the barbwire enclosure. The camera infrared sensing mechanism was aimed at the lure such that animals entering must cross the wire before triggering the camera. Sites were active for 10-24 days.

Due to the propensity of bears to chew on and rub their bodies on painted and creosote impregnated bridges and sign posts, hair samples were collected from sign posts and bridge pilings on all open roads in the main Cabinet and West Cabinet Mountains within Montana during fall of 2000. Several roads in the north portion of the West Cabinets in Idaho were also sampled. All wooden bridges and signposts were searched for bear hair. Any hair that was found was collected, the location was recorded, and the hair was stored for future identification. Any hair remaining on the post after collecting a sample was removed by burning it with a small propane torch. This was done in order to clear posts of all old hair that may contaminate future samples collected at the same site.

Radio Monitoring

Attempts were made to obtain aerial radiolocations on all instrumented grizzly bears at least once each week during the 7-8 month period in which they were active. Transplanted bears were monitored daily following release for at least the first two weeks and usually three times per week following. In addition, efforts were made to obtain as many ground locations as possible on all bears, usually by triangulating from a vehicle. Annual and composite home ranges (minimum convex polygons; Hayne 1945, adaptive kernel; Worton 1989) were calculated for all grizzly bears for the entire study period. A computer program (CALHOME; U.S. Forest Service and California Fish and Game) was used to determine home range sizes.

Berry Transects

Quantitative comparisons of both the annual and site-specific influences of fruit production of huckleberry and buffaloberry were made using methods similar to those established for Glacier National Park (Kendall 1986). Transect line origins were marked by a 1.5 m metal post or by flagging the site with surveyors' ribbon. A specific azimuth was followed from the post across the slope through homogenous habitat. At 1 m intervals, a 0.04 m² frame (2 x 2 decimeter) was placed on the ground or held over the shrubs and all fruits and pedicels within the perimeter of the frame were counted. If no portion of a plant was intercepted, the frame was advanced at 0.5 meter intervals and a count of empty frames was recorded. Fifty frames containing the desired species were counted on each transect. Two habitat components were sampled (Timbered Shrubfields and Mixed Shrub/Cutting Units), primarily to examine the influence of timber harvesting on berry production on a variety of aspects and elevations. Notes on berry phenology, berry size, and plant condition were recorded. Nineteen huckleberry and 5 buffaloberry transects were sampled from 1990-99, however, only 18 huckleberry transects were sampled in 2000, and 2 new transects were added in 2001. One new transect was added in 2002.

Serviceberry measurements were made by counting berries on 5 marked plants in 1990. In 1991 the number of marked plants sampled was increased to 10 at each site. Five serviceberry sites were sampled from 1990-96, and one site was added in 1997.

In 2001, three new plots were established to document berry production of mountain ash (*Sorbus scopulina*). Ten plants were permanently marked at each site, similar to the serviceberry plots.

RESULTS AND DISCUSSION

Grizzly Bear Observations and Recovery Plan Criteria

Grizzly bear observations were recorded from public and agency sightings during 2002 and appended to a sighting database. The file includes over 900 credible instances of sightings, tracks, scats, digs, and hair dating from 1960 (Fig. 3) and 89 mortalities dating from 1950 (Table 1).

Thirty-four grizzly bear sightings were reported to this study that rated 4 or 5 (most credible) on a 5 point scale for credibility during 2002. Twenty-two of these sightings occurred in the Yaak portion of the recovery zone and 10 sightings occurred in the Cabinet Mountains portion of the recovery zone. One sighting came from east of Koocanusa Reservoir and one

sighting occurred south of the Clark Fork River. Thirty-two credible sighting reports of grizzly bears received by this study were distributed among Bear Management Units (BMUs) 2, 3, 5, 6, 10, 11, 12, 13, 14, 15, 16, and 17 (Fig. 3).

Sightings of females with cubs indicate offspring in their first 12 months of life. Yearlings are offspring in their second 12 months of life. Female with young is used to indicate offspring of indeterminate age. Six credible sightings of 4 unduplicated females with cubs occurred during 2002. Credible sightings of females with cubs occurred in BMUs 11, 12, 13, 14, 15, and 17. One credible sighting of a female with yearlings occurred in BMU 2. Unduplicated sightings of females with cubs varied from 0-4 per year and averaged 1.7 per year from 1997-02 (Tables 2 and 3). Recovery plan criteria indicate the need for an average of 6.0 females with cubs per year.

Thirteen of 22 BMUs in the recovery zone had sightings of females with young during 1997-02 (Fig. 4). Occupied BMUs were: 2, 4, 5, 6, 7, 11, 12, 13, 14, 15, 16, 17, and 21. Recovery plan criteria indicate the need for 18 of 22 BMUs to be occupied. Sightings of a female with 3 yearlings in BMU 2 during 2002, a subadult in BMU 5 during 2001, a female with a yearling in BMU 5 during 2000, and a subadult grizzly bear track observed in BMU 5 in 1999, were indicative of recent reproduction in the Cabinet Mountains.

Six known human caused mortalities of grizzly bears have occurred in the CYGBRZ or within 10 miles during 1997-02 (Table 1). Remains of a grizzly bear were located on the railroad tracks east of Heron, Montana during spring of 2002. The bear appeared to have died during the autumn of 2001 and was assumed to be a female pending confirmation by genetic analysis. The presence of 3 orphaned yearlings in the vicinity contributed to this assumption. Recovery criteria involving this 2001 mortality were updated. Human caused mortalities were an adult male (management removal), an adult bear believed to be a female (train collision) and 4 subadult females (1 self defense, 2 illegal under investigation, and a black bear mistaken identity). An adult female with 2 cubs died of natural causes in 1999, 5 cubs and 1 yearling died of assumed natural causes in 2000, 2001, and 2002. Population levels were calculated by dividing observed females with cubs (7) from 2000-02 by 0.6 (sightability) then dividing by 0.284 (adult female proportion of population) as specified in the recovery plan (USFWS 1993). This resulted in a minimum population of 41 individuals. The recovery plan states; "any attempt to use this parameter to indicate trends or precise population size would be an invalid use of these data". Applying the mortality limit of 4% to the minimum calculated population resulted in a total mortality limit of 1.6 bears per year. The female limit is 0.5 females per year (30% of 1.6). Average annual human caused mortality for 1997-02 was 1.0 grizzly bears and 0.8 females. Though the calculated goal for total mortality was met, female mortality exceeded the goal during 1997-02.

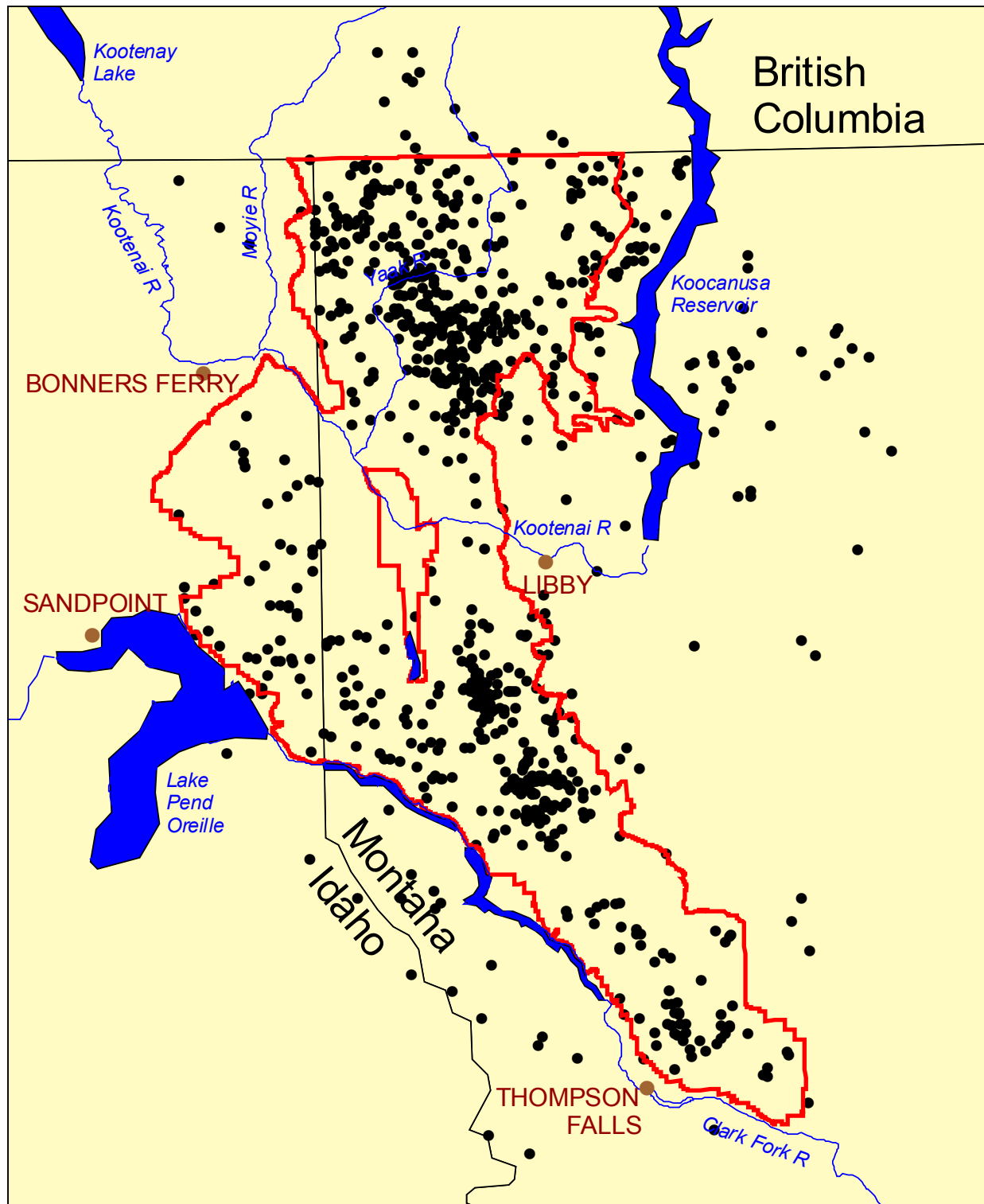


Figure 3. Grizzly bear observations in the Cabinet-Yaak recovery area, 1960-2002.

Table 1. Grizzly bear mortality in or near the Cabinet-Yaak recovery zone, 1950-02.

YEAR	LOCATION	TOTAL	SEX / AGE	MORTALITY CAUSE
1950	SQUAW CR, MT	1	SUBADULT	UNKNOWN
1951	PETE CR, MT	1	ADULT MALE	HUMAN, MANAGEMENT REMOVAL
1951	PAPOOSE CR, MT	2	SUBADULTS	UNKNOWN
1951	GOAT CR, MT	1	SUBADULT MALE	UNKNOWN
1952	FELIX CR, MT	6	2 ADULT FEMALES, 4 YEARLINGS	HUMAN, MANAGEMENT REMOVAL
1953	OBRIEN CR, MT	1	SUBADULT MALE	HUMAN, HUNTER KILL
1953	KENELTY MT, MT	1	UNKNOWN	HUMAN, HUNTER KILL
1953	20-ODD MT, MT	1	UNKNOWN	HUMAN, HUNTER KILL
1953	BURNT CR, MT	1	UNKNOWN	HUMAN, HUNTER KILL
1953	17-MILE CR, MT	1	UNKNOWN	HUMAN, HUNTER KILL
1954	N F BULL R, MT	1	UNKNOWN	HUMAN, HUNTER KILL
1954	S F BULL R, MT	1	UNKNOWN	HUMAN, HUNTER KILL
1954	CEDAR LK, MT	1	UNKNOWN	HUMAN, HUNTER KILL
1954	CEDAR LK, MT	1	UNKNOWN	HUMAN, HUNTER KILL
1954	TAYLOR PK, MT	1	UNKNOWN	HUMAN, HUNTER KILL
1954	SILVERBUTTE CR, MT	1	UNKNOWN	HUMAN, HUNTER KILL
1954	SILVERBOW CR, MT	1	ADULT FEMALE	HUMAN, HUNTER KILL
1955	WOLF CR, MT ¹	1	ADULT MALE	HUMAN, MANAGEMENT REMOVAL
1955	MT HEADLEY, MT	1	SUBADULT	HUMAN, MANAGEMENT REMOVAL
1955	BAREE LK, MT	1	ADULT MALE	UNKNOWN
1955	BAREE LK, MT	1	ADULT FEMALE	UNKNOWN
1955	BEAR CR, MT	1	SUBADULT MALE	HUMAN, HUNTER KILL
1958	SQUAW CR, MT	1	ADULT FEMALE	HUMAN, MANAGEMENT REMOVAL
1959	E F ROCK CR, MT	2	ADULT FEMALE, 1 CUB	HUMAN, HUNTER KILL
1959	W F THOMPSON R, MT	4	ADULT FEMALE, 3 CUBS	UNKNOWN
1959	CLIFF CR, MT	1	UNKNOWN	UNKNOWN
1960	PROSPECT CR, MT ¹	2	ADULT FEMALE, 1 CUB	UNKNOWN
1964	GRAVES CR, MT	2	SUBADULTS	UNKNOWN
1964	WANLESS LK, MT	3	SUBADULTS (ADULT WOUNDED)	UNKNOWN
1965	SNOWSHOE CR, MT	2	SUBADULTS	UNKNOWN
1965	PINKHAM CR, MT ¹	1	UNKNOWN	UNKNOWN
1967	SOPHIE LK, MT ¹	1	UNKNOWN	UNKNOWN
1968	BEAR CR, MT	1	ADULT FEMALE	HUMAN, ILLEGAL KILL
1968	GRANITE CR, MT	1	SUBADULT MALE	HUMAN, MANAGEMENT REMOVAL
1969	PRISCILLA PK, MT	1	ADULT FEMALE	UNKNOWN
1970	THOMPSON R, MT	1	UNKNOWN	UNKNOWN
1970	CAMERON CR, MT	1	SUBADULT MALE	UNKNOWN
1970	SQUAW CR, MT	2	ADULT FEMALE, SUBADULT FEMALE	HUMAN, MANAGEMENT REMOVAL
1971	MURR CR, MT ¹	1	ADULT FEMALE	UNKNOWN
1972	ROCK CR, MT	1	SUBADULT	HUMAN, MISTAKEN IDENTITY (Black Bear)
1974	SWAMP CR, MT	1	ADULT MALE	HUMAN, HUNTER KILL
1977	RABBIT CR, MT	1	ADULT MALE	HUMAN, DEFENSE OF LIFE BY HUNTER
1982	GROUSE, ID	1	ADULT MALE	HUMAN, ILLEGAL KILL
1984	HARVEY CR, ID	1	UNKNOWN	HUMAN, MISTAKEN IDENTITY (Black Bear)
1985	LYONS CR, MT	1	ADULT MALE	HUMAN, DEFENSE OF LIFE BY HUNTER
1986	BURNT CR, MT	1	CUB	UNKNOWN (NATURAL)
1987	FLATTAILE CR, MT	1	FEMALE CUB	HUMAN, MISTAKEN IDENTITY (Eik)
1988	LEWISBY CR, BC ¹	1	ADULT MALE	HUMAN, HUNTER KILL (BC)
1988	N F 17-MILE CR, MT	1	ADULT FEMALE	HUMAN, DEFENSE OF LIFE BY HUNTER
1989	BURNT CR, MT	1	SUBADULT FEMALE	HUMAN, TRAP MORTALITY (Predation)
1990	POVERTY CR, MT	1	SUBADULT MALE	HUMAN, UNKNOWN
1992	TRAIL CR, MT	1	UNKNOWN	UNKNOWN
1993	LIBBY CR, MT	2	ADULT FEMALE AND CUB	UNKNOWN (NATURAL)
1993	LIBBY CR, MT	1	ADULT MALE	HUMAN, UNDER INVESTIGATION (Illegal)
1996	DODGE CR, MT	1	SUBADULT MALE	HUMAN, UNDER INVESTIGATION (Illegal)
1996	GOLD CR, BC ¹	1	ADULT MALE	HUMAN, UNDER INVESTIGATION (Illegal)
1999	17 MILE CR, MT	3	ADULT FEMALE, 2 CUBS	NATURAL MORTALITY (Predation)
1999	W FK YAHK R, BC	1	SUBADULT FEMALE	HUMAN, DEFENSE OF LIFE BY HUNTER
1999	E FK YAHK R, MT	1	ADULT MALE	HUMAN, MANAGEMENT REMOVAL
2000	HAWKINS CR, BC	2	2 CUBS	UNKNOWN (NATURAL)
2000	FOWLER CR, MT	1	1 CUB	UNKNOWN (NATURAL)
2000	PETE CR, MT	1	SUBADULT FEMALE	HUMAN, UNDER INVESTIGATION (Illegal)
2001	COLD CR, BC	2	2 CUBS	UNKNOWN (NATURAL)
2001	SPREAD CR, MT	1	SUBADULT FEMALE	HUMAN, MISTAKEN IDENTITY (Black Bear)
2001	ELK CR, MT	1	ADULT FEMALE?	HUMAN, TRAIN COLLISION
2002	MARTEN CR, MT	1	SUBADULT FEMALE	NATURAL
2002	PORCUPINE CR, MT	1	SUBADULT FEMALE	HUMAN, UNDER INVESTIGATION (Illegal)

¹ Occurred more than 10 miles outside the recovery zone.

Table 2. Annual Cabinet-Yaak recovery zone grizzly bear population and known human-caused mortality, minimum unduplicated counts of females with cubs, and distribution of females with young, 1988-2002.

YEAR	ANNUAL FWC'S	ANNUAL HUMAN CAUSED ADULT FEMALE MORTALITY	ANNUAL HUMAN CAUSED ALL FEMALE MORTALITY	ANNUAL HUMAN CAUSED TOTAL MORTALITY	4% TOTAL HUMAN CAUSED MORTALITY LIMIT ¹	30% ALL FEMALE HUMAN CAUSED MORTALITY LIMIT ¹	TOTAL HUMAN CAUSED MORTALITY 6 YEAR AVERAGE	FEMALE HUMAN CAUSED MORTALITY 6 YEAR AVERAGE
1988	1	1	1	1	0	0		
1989	0	0	1	1	0	0		
1990	1	0	0	1	0	0		
1991	1	0	0	0	0	0		
1992	1	0	0	0	0	0		
1993	2	0	0	1	0.9	0.3	0.7	0.3
1994	1	0	0	0	0.9	0.3	0.5	0.2
1995	1	0	0	0	0.9	0.3	0.3	0
1996	1	0	0	1	0.7	0.2	0.3	0
1997	3	0	0	0	1.2	0.4	0.3	0
1998	0	0	0	0	0.9	0.3	0.3	0
1999	0	0	1	2	0.7	0.2	0.5	0.2
2000	2	0	1	1	0.5	0.1	0.7	0.3
2001	1	1 ²	2	2	0.5	0.1	1.0	0.8
2002	4	0	1	1	1.4	0.4	1.0	0.8

¹ Presently grizzly bear numbers are so small in this ecosystem that the mortality goal shall be zero known human-caused mortalities.

² Mortality discovered in 2002 and assumed to be an adult female, pending DNA verification.

Table 3. Status of the Cabinet-Yaak recovery zone during 2002 in relation to the demographic recovery targets from the grizzly bear recovery plan (USFWS 1993).

Recovery Criteria	Target	2002
Females w/cubs (6-yr avg)	6.0	1.7 (10/6)
Human Caused Mortality limit (4% of minimum estimate)	1.4	1.0 (6 yr avg)
Female Human Caused mortality limit (30% of total mortality)	0.4	0.8 (6 yr avg)
Distribution of females w/young	18 of 22	13 of 22



Figure 4. Female with young occupancy and mortality by Bear Management Units (BMUs) within the Cabinet-Yaak recovery zone 1997-2002. (& indicates occupancy of a female with young and M indicates mortality).

Trapping

Cabinet Mountains Research and Population Augmentation

Research trapping was conducted in the Cabinet Mountains portion of the CYGBRZ from 1983-87. Six captures of 3 individual grizzly bears and 281 captures of 184 individual black bears were made during 4,758 trap-nights (Table 4). A trap night was defined as one site with one or more snares set for one night. Rates of capture by individual were 1 grizzly bear/1,586 trap-nights and 1 black bear/26 trap-nights.

From 1990 to 1994 four female grizzly bears were captured and collared in the Flathead River Valley of British Columbia and released in the Cabinet Mountains of northwest Montana in order to augment the existing population. To obtain the 4 subadult females that were transplanted, 22 different grizzly bears were captured during 840 trap-nights. Capture rates were 1 grizzly bear/38 trap-nights, and 1 suitable subadult female/210 trap-nights. A total of 74 black bears were captured with a capture rate of 1/11 trap-nights. One of the transplanted bears and her cub died of unknown causes a year after her release (Kasworm et al. 1998). The remaining three bears were monitored until their collars fell off. A short history of these bears follows later in this report. The program was designed to determine if transplanted bears would remain in the target area and ultimately contribute to the population through reproduction. Three of four transplanted bears remained within the target area for more than one year. Though one of the transplanted bears produced a cub, the animal had likely bred prior to translocation and did not satisfy our criteria for reproduction with native males.

In 1995 an effort was begun to recapture and collar these bears in order to determine the success of the transplant program. A total of 945 trap nights were expended during 1995-2002 (Table 4), however, most of the trapping effort before 2002 involved the use of horses to access backcountry trails and closed roads. No grizzly bears have been captured in the Cabinets north of the Clark Fork River during the period. Three yearling grizzly bears (1 female and 2 males) were captured in May 2002 south of the Clark Fork River near human habitation. These siblings were fitted with ear tag transmitters and released in areas away from humans. The female died of natural causes in June 2002. A grizzly bear that apparently died in 2001 was found along the railroad tracks south of the River in May 2002 and is presumed to be the mother of these three bears.

Yaak River Research

Trapping was conducted in the Yaak portion of the CYGBRZ during 1986 and 1987 as part of a black bear graduate research study (Thier 1990), and from 1989-02 by the U.S. Fish and Wildlife Service. A total of 57 captures of 26 individual grizzly bears and 352 captures of 281 individual black bears were made during 5,763 trap nights during 1986-02 (Table 4). A trap night was defined as one site with one or more snares set for one night.

Trapping effort was concentrated in the home ranges of known bears during 1995-2002 in order to recapture adult females with known life histories. Much of the effort involved using horses in areas inaccessible to vehicles, such as backcountry trails and closed roads. This strategy limited the area of the study that was sampled during trapping and probably decreased the chances of catching new bears, especially females.

Table 4. Capture effort and success for grizzly bears and black bears in the Yaak and Cabinet Mountains study areas.

Area / Year	Trap Nights	Grizzly Bear Captures	Black Bear Captures	Trap Nights / Grizzly Bear	Trap Nights / Black Bear
Cabinet Mtns.					
1983	365	1	44	365	8
1984	1461	1	88	1461	17
1985	1333	3	64	444	21
1986	1531	1	81	1531	19
1987	68	0	4	0	17
1995	331	0	29	0	11
1996	63	0	20	0	3
1997	129	0	9	0	14
1999	14	0	1	0	14
2001	10	0	2	0	5
2002	398	3	35	133	11
1983-02 Total					
Captures	5703	9	377	634	15
Individuals ¹	5703	6	267	951	21
Yaak River					
1986	759	4	29	190	26
1987	549	7	6	78	92
1989	646	3	48	215	14
1990	508	3	26	169	20
1991	507	1	38	507	13
1992	205	2	16	103	13
1993	216	2	19	108	11
1994	82	3	4	27	21
1995	505	5	47	101	11
1996	223	8	9	28	25
1997	569	7	48	81	12
1998	71	5	3	14	24
1999	129	3	10	43	13
2000	169	1	15	169	11
2001	116	1	5	116	23
2002	509	2	29	255	18
1986-02 Total					
Captures	5763	57	352	101	16
Individuals ¹	5763	26	281	222	21

¹Individual new bears captured during the indicated time.

Measurements and biological data were obtained from all captured grizzly bears from 1983 to 2002 (Table 5). Monitoring was conducted for as long as the animal wore a collar.

Table 5. Grizzly bear capture information from the Cabinet-Yaak 1983-02. Multiple captures of a single bear during a given year are not included.

Bear	Capture Date	Sex	Age (Est)	Weight kg	Location
678	6/29/83	F	28	86	Bear Cr.
680	6/19/84	M	11	(181)	Libby Cr.
680	5/12/85	M	12	(181)	Bear Cr.
678	6/01/85	F	30	79	Cherry Cr.
14	6/19/85	M	27	(159)	Cherry Cr.
101	4/30/86	M	(8)	(171)	N Fk 17Mile Cr.
678	5/21/86	F	31	65	Cherry Cr.
106	5/23/86	F	8	92	Otis Cr.
128	5/10/87	M	4	(114)	Lang Cr.
129	5/20/87	F	1	32	Pheasant Cr.
106	6/20/87	F	9	(91)	Grizzly Cr.
134	6/24/87	M	8	(181)	Otis Cr.
129	7/06/89	F	3	(80)	Grizzly Cr.
192	10/14/89	M	1	90	Large Cr.
193	10/14/89	M	1	79	Large Cr.
193	6/03/90	M	2	77	Burnt Cr.
206	6/03/90	F	2	70	Burnt Cr.
106	9/25/90	F	12	(136)	Burnt Cr.
206	5/24/91	F	3	77	Burnt Cr.
244	6/17/92	M	6	140	Yaak R.
106	9/04/92	F	14	144	Burnt Cr.
34	6/26/93	F	(15)	158	Spread Cr.
206	10/06/93	F	5	(159)	Pete Cr.
505	9/14/94	F	Cub	45	Jungle Cr.
302	10/07/94	M	1	95	Cool Cr.
303	10/07/94	F	1	113	Cool Cr.
106	9/20/95	F	17	(169)	Cool Cr.
353	9/20/95	F	Cub	43	Cool Cr.
354	9/20/95	F	Cub	47	Cool Cr.
302	9/24/95	M	2	113	Cool Cr.
342	5/22/96	M	4	(146)	Zulu Cr.
363	5/27/96	M	4	(158)	Zulu Cr.
303	5/27/96	F	3	(113)	Zulu Cr.
355	9/12/96	M	(6)	(203)	Rampike Cr.
358	9/22/96	M	8	(225)	Pete Cr.
353	9/23/96	F	1	83	Cool Cr.
354	9/23/96	F	1	88	Cool Cr.
384	6/12/97	M	7	(248)	Zulu Cr.
128	6/15/97	M	14	(270)	Cool Cr.
386	6/20/97	M	5	(180)	Zulu Cr.
363	6/26/97	M	5	(180)	Cool Cr.
538	9/25/97	F	6	(135)	Rampike Cr.
354	9/27/97	F	2	99	Burnt Cr.
354	8/20/98	F	3	(90)	Cool Cr.
106	8/29/98	F	20	(146)	Burnt Cr.
363	8/30/98	M	6	(203)	Burnt Cr.
342	9/17/98	M	6	(203)	Clay Cr.
303	9/21/98	F	5	(113)	Clay Cr.
592	8/17/99	F	2	(91)	Pete Cr.
596	8/23/99	F	2	(91)	French Cr.
538	7/16/00	F	9	(171)	Moyie River, BC
552	7/16/01	F	1	(36)	Copeland Cr.
577	5/22/02	F	1	23	Elk Cr.
578	5/22/02	M	1	23	Elk Cr.
579	5/22/02	M	1	30	Elk Cr.
353	6/15/02	F	7	(136)	Burnt Cr.
651	9/25/02	M	(8)	(227)	Spread Cr.

Hair Sampling for DNA Analysis

During 1998, an attempt was made to collect hair samples from the Cabinet Mountains resident population as well as the augmentation bears. Sixty-eight hair samples were collected at eleven sites. All of the samples except 2, were visually judged to come from black bears based on the occurrence of guard hairs without a white tip. The remaining samples were classed as unknowns. Samples will be analyzed when funding becomes available.

In November 2000, bear hair samples were pulled off of wooden bridges and signposts in the Cabinet and West Cabinet Mountains of Montana and portions of Idaho. All posts were cleared of hair using a propane torch so that future samples will not be contaminated. Approximately 100 samples were collected, of which 5 appeared to be from grizzly bears. Most samples were old and it is not known if they are suitable for DNA analysis. Hair collected at these sites in the future will be fresh and should provide better results during analysis.

During August and September of 2002, barbwire hair snag enclosures were placed at 26 sites in the Cabinet Mountains and 7 sites in the Yaak River drainage as a pilot study for wider use of the technique. Sites were selected on the basis of previous grizzly bear telemetry, sightings, and access. Three sites (Middle Fork Bull River, Lower West Fisher River, East Fork of Rock Creek, and Bunker Hill) produced pictures of grizzly bears, but no hair was observed at one of the sites (Middle Fork Bull River). Two additional sites produced hair that appeared to be grizzly bear, but cameras malfunctioned at the sites and no pictures were obtained (Upper West Fisher River and Orr Creek). Additional samples of hair that may be grizzly bear were also collected at other sites. Bear hair samples will be analyzed at a later date. Other species photographed included black bear, bushytail woodrat (*Neotoma cinerea*), domestic dog (*Canis familiaris*), elk (*Cervus canadensis*), marten (*Martes americana*), moose (*Alces alces*), raven (*Corvus corax*), red squirrel (*Tamiasciurus hudsonicus*), snowshoe hare (*Lepus americanus*), and whitetail deer (*Odocoileus virginianus*).

Grizzly Bear Monitoring

Six grizzly bears were monitored by radio telemetry during 2002. They included 2 adult females, one adult male, 2 yearling males, and one yearling female. Both adult females had cubs during 2002. Bear 538 had a litter of 2 and bear 353 had a litter of 3 cubs. The radio signal from bear 353 was lost in late November or early December.

Three yearlings were captured and relocated on May 22 south of the Clark Fork River near Heron, Montana as part of a pre-emptive move away from several homes and ranches. The bears were separated and released with ear tag transmitters in Elk Creek and Marten Creek. The separation was based on the experience and belief that young bears without siblings may be more wary than bears in the company of siblings. The bears were released about 16 hours after capture.

Telemetry failures hampered monitoring of these bears. One ear tag transmitter on a male in Elk Creek began operating erratically within a week and failed after about a month. The other 2 bears were released in Marten Creek about 5 km apart. Both animals were observed together feeding about 3 weeks after capture and remained together for about 2 weeks. In late June, they were located separately and in early July a mortality signal was received from female bear 577. A site investigation discovered the carcass of the animal at the base of a 5-7 meter cliff. The bear appeared to be in somewhat emaciated condition at the time of death. The carcass was sent to the Montana Fish, Wildlife, and Parks laboratory for necropsy. The report indicated "severe trauma to the hind legs and pelvic region of the bear. Bite marks were not observed in the area of the trauma. Subcutaneous hematoma was apparent on the left side of

the rib cage. Canine bite marks were present but a distinct pair could not be identified. The cub was considered to be in poor physiologic condition at the time of its death. The trauma to the back legs and pelvic region of the bear was consistent with blunt force trauma (possibly from a vehicular collision) and, compounded by the poor condition of the bear, likely resulted in its death (blood loss and tissue damage). The wound to the left side of the chest was the result of an attack by another predator (Appendix 1).“ The ear tag transmitter on the remaining male failed in early July, but observation reports by the public during July and August indicated that the bear was still in Marten Creek.

Monitoring Summary of Each Adult Female

Cabinet Mountains Native Adult Female Bears

Grizzly 678--This adult female was first captured in Bear Creek on 30 June 1983. She weighed 87 kg at capture and was 28 years old. Bear 678 was monitored until spring of 1989 when she lost her collar. During 1983-89 she was recaptured twice for collar replacement. She was not accompanied by cubs at capture and was never seen with cubs during monitoring though both radio collared males spent time with her during the spring breeding seasons of 1984 and 1985. She may have come into estrous, but could not complete a pregnancy. During 1983 and 1984 her home range extended south to the Vermilion River, but during subsequent years she remained further north of that area with the core of her range within or near the Cabinet Mountains Wilderness. When she lost her collar during the spring of 1989 she was 34 years old and was one of the oldest known grizzly bears recorded in the wild.

Cabinet Mountains Transplanted Bears

Bear 218--This animal was captured in the North Fork of the Flathead in British Columbia on 21 July 1990 as a 5-year-old and released near the west edge of the Cabinet Mountains Wilderness the following day. Bear 218 weighed 71 kg when captured. She was monitored throughout the remainder of 1990 and denned in the upper reaches of Big Cherry Creek at an elevation of about 2100 m. Contact with bear 218 was lost in August of 1991 when the canvas spacer on her collar separated. On 2 July 1992, she was observed crossing a road in the Midas Creek area. Although she was of potential reproductive age, she was not observed with cubs. She has not been observed since and her fate at this time is unknown.

Bear 258--This animal was captured in the North Fork of the Flathead in British Columbia on 21 July 1992 as a 6-year-old and released near the west edge of the Cabinet Mountains Wilderness the following day. Bear 258 weighed 70 kg at capture. She was monitored from release through denning in the East Fork of Rock Creek during early November of 1992. She emerged from her den between 12 and 19 May. Small tracks were later observed in the snow from the air, indicating young accompanied her. The presence of one cub was confirmed on 17 June when she and a cub were observed on a radio monitoring flight. Bear 258 was seven years old in 1993 and had undoubtedly been bred in British Columbia prior to being moved the previous year (Table 6). Bear 258 traveled fairly extensively in 1993 (considering the age of her cub) and utilized upper elevations in the East Fork of Rock Creek, Swamp Creek, Libby Creek, and East Fork of the Bull River. In mid-July her movements ceased near the vicinity of Libby Lakes (in upper Libby Creek drainage) and it was assumed she had cast her collar. An examination of the site was made on 22 July. Bear 258 was found dead, lying on her stomach in a daybed she had made in a small patch of trees at 2000 m elevation on an otherwise open

slope. It was estimated she had been dead for 8-10 days. There was no evidence of a traumatic death at the site, nor was there any evidence of her cub. The carcass was removed the following day via helicopter and sent to the Montana Department of Fish, Wildlife and Parks Wildlife Laboratory in Bozeman for analysis. Laboratory personnel were unable to determine a cause of death, though several factors such as parasites, physical trauma, physical abnormalities, fast acting poisons, and starvation were ruled out.

Bear 286--This animal was 2 years old when captured in the upper North Fork of the Flathead River on 14 July 1993. She was released in the Lost Girl drainage in the Cabinet Mountains on 15 July. She weighed 36 kg at capture. Bear 286 stayed in the vicinity of the release site for 10 days before moving south. She spent the remainder of the summer and fall at higher elevations in the Cabinet Mountains with most of her movements centered within 10 km of the release site. The one long movement she made occurred in late August when she moved north along the crest of the Cabinet Mountains about 25 km and then returned to the vicinity of the release site. These movements occurred over 7-8 days. Bear 286 denned during early November of 1993 in Snowshoe Creek at about 2100 m elevation. Bear 286 emerged from her den during late April of 1994. She remained at higher elevations during most of the year. Her home range was quite similar to that of 1993. Bear 286 denned in Granite Creek during early November and lost her radio collar during late April of 1995 shortly after den emergence.

Bear 311--This 3-year-old female was captured on 12 July 1994 in the North Fork of the Flathead River. She weighed 75 kg and was released at the Lost Girl site on 13 July. She remained near the release site for 4 days before moving east about 15 km to an area near Horse Mountain. She fed on huckleberries in that area until 24 July when she began moving west. On 25 July she lost her radio collar in the vicinity of Standard Lake. Bear 311 was sighted again on 7 September in the East Fork of Rock Creek. There were no additional sightings reported to this study after that date. On 2 October 1995 this bear was captured at Lydia Cr. approximately 80 km northeast of her last known sighting in the Cabinet Mountains. She was moved back to the Cabinet Mountains and released in Lost Girl Creek with a new radio collar. She was monitored for approximately one month, after which the signal was lost.

Yaak Drainage Adult Female Bears

Grizzly 106--An adult female bear was captured on 23 May 1986 in the Yaak River near the confluence with Pheasant Creek. Two 5-month-old cubs accompanied the 8-year-old female, though the cubs were not captured. She weighed 92 kg and her body condition was judged to be good. She was recaptured in 1986, 1987, 1990, 1992, 1995, and 1998. She was accompanied by only 1 cub when captured in the fall of 1986, the other apparently died in early July. Bear 106 produced 3 cubs in 1988 (bears 192, 193, and 206). These cubs remained with her until the spring of 1990. She was recaptured in the fall of 1990 and her collar was replaced. In 1991, bear 106 was accompanied by 2 cubs, from which she separated during June of 1992 during the breeding season. She was observed consorting with male bear 128 during 1992. She was recaptured on 4 September and weighed 144 kg. Bear 106 produced two cubs again in 1993. Those cubs remained with her until June of 1994 when she was observed in the company of an unmarked adult male and at a later time, grizzly 244. She lost her collar during July of 1994. Bears 302 and 303 were believed to be her 1993 offspring. On 20 September 1995 she was recaptured and collared. Two female cubs (bears 353 and 354) were captured with her. These two cubs remained with her until 1997. She was captured and recollared on 29 August 1998. She was alone and was not lactating at the time of capture. She was monitored

until June 1999 at which time the radio signal came from the same location on two consecutive flights. Upon examination of the site, bear 106 was found dead along with two cubs of unknown sex. Evidence at the site indicated that she had likely been killed by an adult male grizzly bear while defending an elk carcass and/or her cubs (Table 6).

Grizzly 206--Female 206 was the offspring of bear 106 and had 2 litter mates (Bears 192 and 193). Sibling grizzly bears 206 and 192 were captured on 3 June 1990 in Burnt Creek. She was in good condition and weighed 70 kg. Bear 206 was monitored throughout 1991 and 1992. During 1992 she was observed consorting with male bear 128 during breeding season. Bear 206 was 4 years-old at that time. She did not emerge with cubs in 1993 and was seen consorting with at least 2 male grizzly bears during breeding season. She was recaptured in October 1993 and was in excellent condition weighing in excess of 150 kg. Since separating from her mother bear 206 has centered her home range in the West Fork of the Yaak River and Pete Creek. She lost her radio collar at the den during April of 1994. On 14 September 1994 a female cub (505) was captured in Jungle Creek. Bear 206, and another cub were present at the trap site. In 1997 a female believed to be bear 206 was sighted with two cubs (Table 6).

Grizzly 34--On 26 June 1993 this female bear was captured in Spread Creek. She was approximately 15 years old and weighed 158 kg. She had yellow tags in her ears from British Columbia Wildlife Branch. She had been moved from a garbage dump to Bloom Creek north of the border in British Columbia with 2 yearlings. There were no young with her at capture and due to her large neck, the collar dropped off within a week.

Grizzly 538--This female bear was captured on 25 September 1997 in Rampike Creek. A single cub was with her at the trap site but was not captured. She was estimated to be 6 years old and weighed approximately 135 kg. She separated from the yearling in May of 1998 and was observed with male bear 358 (Table 6). She did not produce cubs in spring 1999, possibly due to the very poor berry crop in 1998. She was seen with an adult male in June of 1999. In late May of 2000 she emerged from the den with two cubs, however, both cubs were not seen with her after June 2000 and were presumed dead. She was captured on 16 July 2000 in the Moyie River drainage in British Columbia. She emerged from her den with 2 cubs in May of 2001, but they were not seen with her after June 2001 and are also presumed to be dead. In May of 2002 she emerged from her den with 2 cubs which survived to den with her in the fall.

Grizzly 303--This female is the offspring of bear 106. She was captured on 27 May 1996 in Zulu Creek and recaptured on 21 September 1998 in Clay Creek. Her home range is centered around the South Fork of the Yaak River. As a 5 year old she was seen with an adult male during breeding season in 1998. She did not have cubs in the spring of 1999, but was seen with an adult male during breeding season. In May 2000 she emerged from the den with two cubs (Table 6), however, after June 2000 one of the cubs was no longer observed with her and was presumed dead. The remaining cub survived and entered the den with her mother in November 2000. She emerged from the den in April 2001, with her yearling. She was monitored until July 2001 when her collar ceased transmitting.

Grizzly 353--This female is the offspring of bear 106. She was captured on 20 September 1995 as a yearling, and on 23 September 1996 as a 2 year old. She wore a transmitter from 1995-97. On 15 June 2002 she was recaptured. She was seen with 3 cubs shortly after capture (Table 6). The radio signal from bear 353 was lost in late November or early December of 2002.

Table 6. Captured grizzly bear reproductive information from the Cabinet-Yaak 1983-02.

Bear	Year	Cubs	Reproductive Interval ¹	Cubs (relationship and fate, if known)
106	1986	2	2	1 dead in 1986, & #129 dead in 1989
106	1988	3	3	%#192 suspected dead in 1991, %#193, & #206
106	1991	2	2	2 cubs of unknown sex and fate
106	1993	2	2	%#302 dead in 1996, & #303
106	1995	2	4	& #353, & #354
106	1999	2	-	& #106 and 2 cubs dead in 1999
206	1994	2	3	& #505
206	1997	2	-	suspected offspring & #596 dead in 1999, & #592 dead in 2000
258	1993	1	-	& #258 and cub dead in 1993
538	1997	1?	3	1 cub separated from 538 in 1998
538	2000	2	1	2 cubs dead in 2000
538	2001	2	1	2 cubs dead in 2001
538	2002	2	-	2 cubs of unknown sex and fate
303	2000	2	-	1 cub dead in 2000
353	2002	3	-	3 cubs of unknown sex and fate

¹Number of years from birth to subsequent birth.

Grizzly Bear Home Ranges

Specific and general locations were obtained on collared bears, but only aerial, specific locations were used to calculate home ranges. The convex polygon and 95% adaptive kernel estimators for annual and life ranges were computed for bears monitored during 1983-2002 (Table 7 and Figs. 5-35).

Four subadult female grizzly bears were transplanted to the Cabinet Mountains during 1990-94. Life range 95% adaptive kernel estimators averaged 367 km² (95% CI " 164).

Native CYGBRZ adult male life range averaged 1,294 km² (95% CI " 551) using the 95% adaptive kernel estimator ($n = 10$, bears 14, 680, 101, 128, 134, 244, 342, 358, 363, and 386). Native adult female life range averaged 574 km² (95% CI " 443) using the 95% adaptive kernel estimator ($n = 6$, bears 678, 106, 206, 303, 353 and 538). The average annual 95% kernel estimator for bear 106 was 231 km² (95% CI " 77) during the 1986-99 period. Her home range was smallest during 1986, 1988, 1991, 1993, and 1995 when she had cubs. The mean annual home range of native adult female bear 678 in the Cabinet Mountains from 1983-88 was 403 km² (95% CI " 239).

Female offspring of bear 106 have been establishing home ranges around their maternal range. Female offspring 206 has established a home range adjacent to and north of her mother's home range. Bear 303 has established a home range east of her mother's old home range and female 354 may have established her home range west of her mothers. Bear 353 has established her home range within her mother's old range.

Home ranges of collared grizzly bears overlap extensively on a yearly and lifetime basis. However, bears typically utilize the same space at different times. Male home ranges overlap several females to increase breeding potential, but males and females consort only during the

brief period of courtship and breeding. Adult male bears whose home ranges overlap seldom use the same habitat at the same time to avoid conflict. For example, bear 128 was captured in the central part of the study area in 1987, but has used this area on a limited basis since capture. He was recaptured in this area in 1997 but promptly moved north out of the core study area. Adult male bears 101, 134, 244, 342, and 363 used a large portion of the core study area from 1986 to 1998, but were not consistently located in close proximity except for bears 342 and 363. These two animals were located together on 4 occasions between 1996 and 1998 and were in close proximity on other occasions. Bears 342 and 363 are believed to be siblings, and were 4-7 years old during 1996-99. Reasons for northward movement of bears during autumn are unknown, but have created greater spacing among collared bears during that season.

Eleven of twenty-three bears (48 percent) captured south of the international boundary in the Yaak study area of northwest Montana and northern Idaho were monitored crossing into Canada between 1987 and 2001. Five of these animals were adult males that spent portions of spring breeding season in Canada during various years between 1987 and 1999 (128, 134, 355, 358, and 386). One of these males (358) was observed courting an adult female (538) whose home range occurs largely in Canada, but was initially captured in the United States. Another adult female (206) whose home range occurs largely in the United States was observed in association with 2 different unmarked adult males in Canada and subsequently produced a litter of cubs. Furthermore, 2 adult males (134 and 128) originally captured in the United States were monitored up to 20 miles north of the border and north of the Moyie River in the Purcell Mountains during breeding season of 1987 and 1992.

Table 7. Home range sizes of native and transplanted grizzly bears in the Cabinet-Yaak recovery zone, 1983-02.

Bear	Year	Age (Est)	Radio Locations	100% Convex Polygon (km ²)	95% Adaptive Kernel (km ²)	100% Adaptive Kernel (km ²)
678 &	1983-1989	28-34	173	658	579	1,204
680 %	1984-1985	11-12	75	1,947	2,217	3,967
14 %	1985	27	23	589	778	2,023
218 ¹ &	1990-1991	5-6	95	541	503	1038
258 ¹ &	1992-1993	6-7	54	400	345	645
286 ¹ &	1993-1994	2-3	82	266	365	624
311 ¹ &	1994-1995	3-4	17	680	568	1,385
101 %	1986	8	38	787	575	1,227
106 &	1986-1999	8-20	379	852	394	1,424
128 %	1987-1997	4-14	204	2,895	2,566	5,825
128	Subadult	4	21	394	642	871
128	Adult	5-14	183	2,895	2,647	5,853
129 &	1987-1989	1-3	42	60	68	89
134 %	1987-1988	8-9	20	594	1,078	1,459
192 %	1990	2	10	574	1,067	77
193 %	1990	2	34	642	1,013	1,327
206 &	1990-1995	2-7	208	1,332	1,357	2,341
206	Subadult	2-4	136	1,288	1,416	2,218
206	Adult	5-7	72	549	637	935
244 %	1992-1994	6-8	96	928	646	1,701
302 %	1994-1996	1-3	60	514	290	531
303 &	1994-2001	1-8	237	337	336	618
303	Subadult	1-4	110	193	238	279
303	Adult	5-8	127	295	293	522
342 %	1996-1999	4-7	65	1,225	781	1,463
342	Subadult	4	26	711	785	1,229
342	Adult	5-7	38	470	571	618
354 &	1997-1999	2-4	69	536	451	908
355 %	1996	(6)	5	N/A	N/A	N/A
358 %	1996-1998	8-10	55	1,442	1,379	2,534
363 %	1996-1999	4-7	120	538	586	874
363	Subadult	4	40	384	369	704
363	Adult	5-7	81	525	643	732
386 %	1997-1998	5-6	29	1,895	2,153	3,313
538 &	1997-2002	6-11	230	835	630	1,941
592 &	1999-2000	2-3	59	471	520	739
596 &	1999	2	10	283	382	382
552 &	2001	1	6	N/A	N/A	N/A
353 &	2002	7	37	119	146	321
577 &	2002	1	11	2	4	9
578 %	2002	1	3	N/A	N/A	N/A
579 %	2002	1	10	5	11	16
651 %	2002	(8)	11	551	151	188

¹ Bear transplanted to Cabinet Mountains from British Columbia.

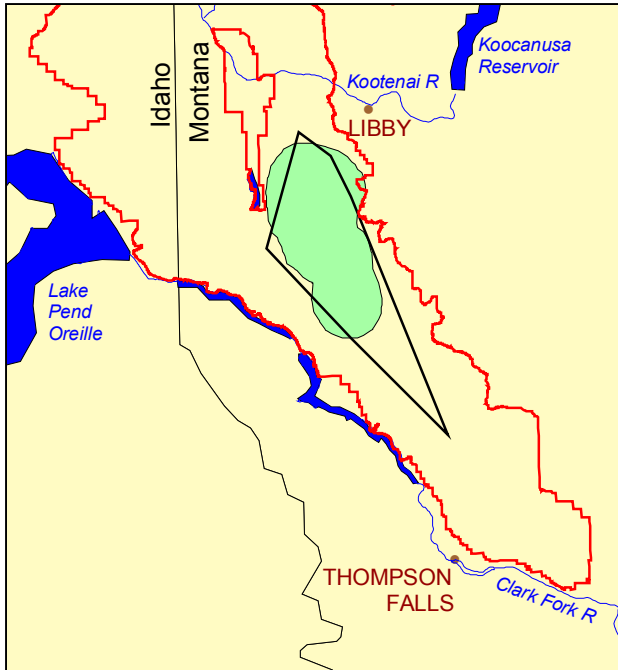


Figure 5. Minimum convex and 95% adaptive kernel (shaded) life ranges of female grizzly bear 678 in the Cabinet-Yaak recovery zone, 1983-89.

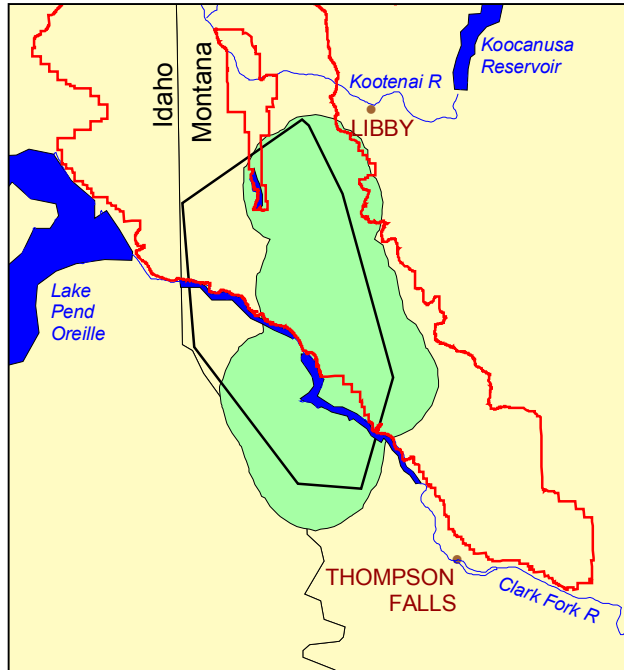


Figure 6. Minimum convex and 95% adaptive kernel (shaded) life ranges of male grizzly bear 680 in the Cabinet-Yaak recovery zone, 1984-85.

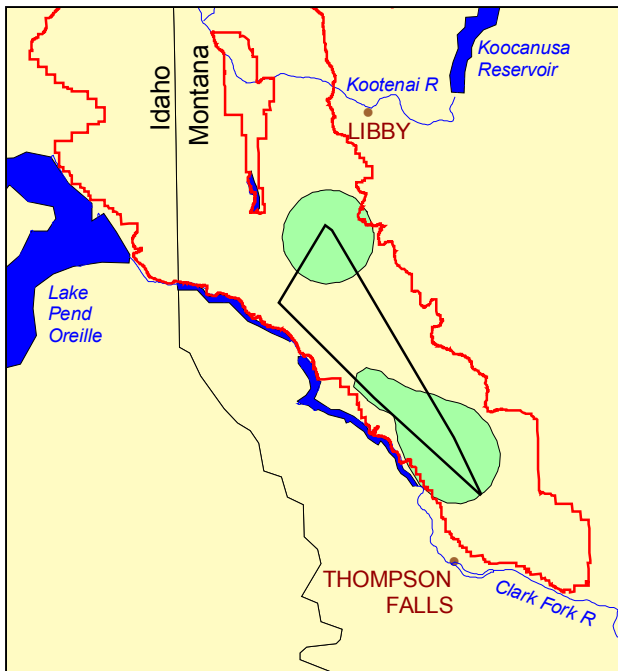


Figure 7. Minimum convex and 95% adaptive kernel (shaded) life ranges of male grizzly bear 14 in the Cabinet-Yaak recovery zone, 1985.

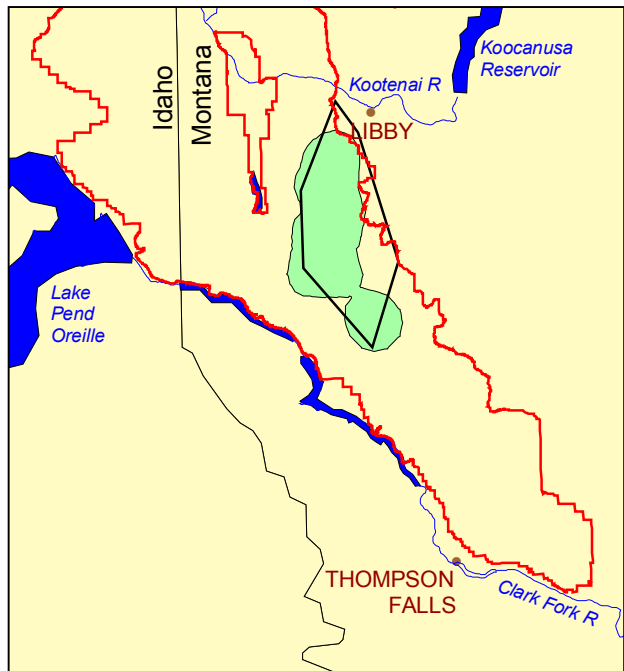


Figure 8. Minimum convex and 95% adaptive kernel (shaded) life ranges of female grizzly bear 218 (augmentation female) in the Cabinet-Yaak recovery zone, 1990-91.

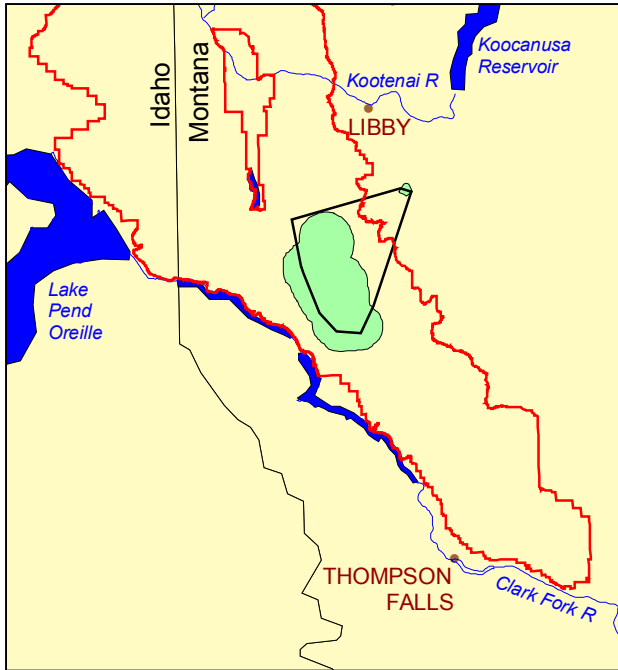


Figure 9. Minimum convex and 95% adaptive kernel (shaded) life ranges of female grizzly bear 258 (augmentation female) in the Cabinet-Yaak recovery zone, 1992-93.

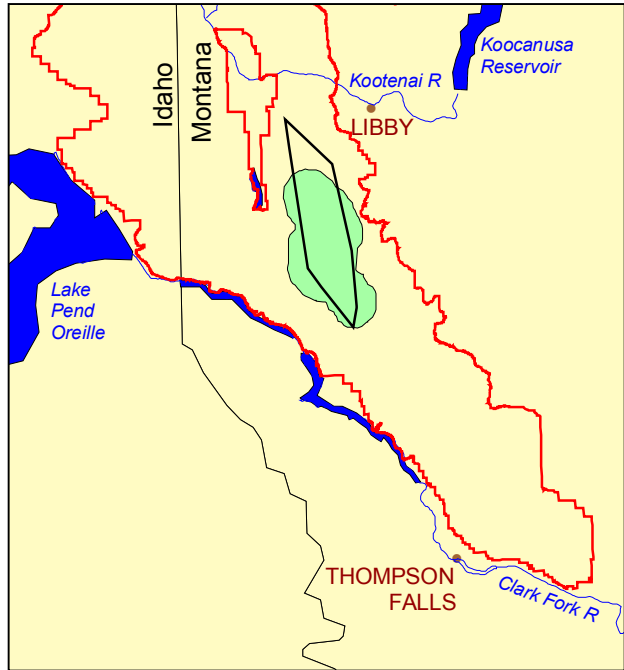


Figure 10. Minimum convex and 95% adaptive kernel (shaded) life ranges of female grizzly bear 286 (augmentation female) in the Cabinet-Yaak recovery zone, 1993-94.

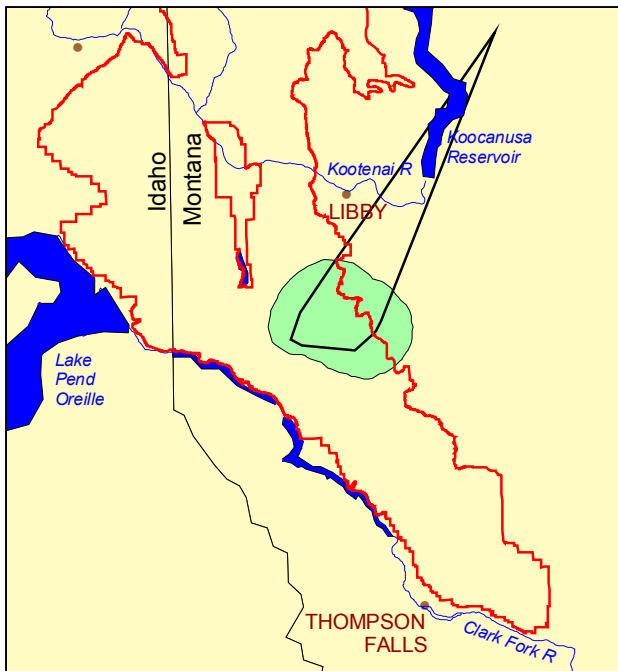


Figure 11. Minimum convex and 95% adaptive kernel (shaded) life ranges of female grizzly bear 311 (augmentation female) in the Cabinet-Yaak recovery zone, 1990-91.

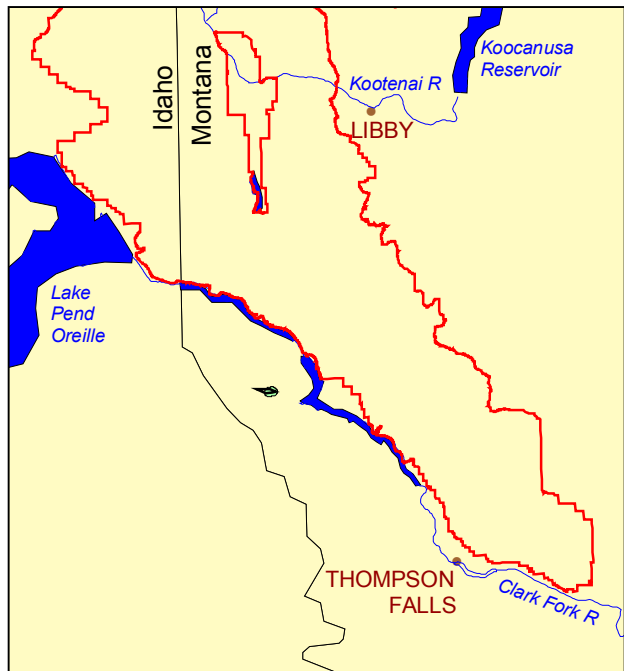


Figure 12. Minimum convex and 95% adaptive kernel (shaded) life ranges of female grizzly bear 577 in the Cabinet-Yaak recovery zone, 1990-91.

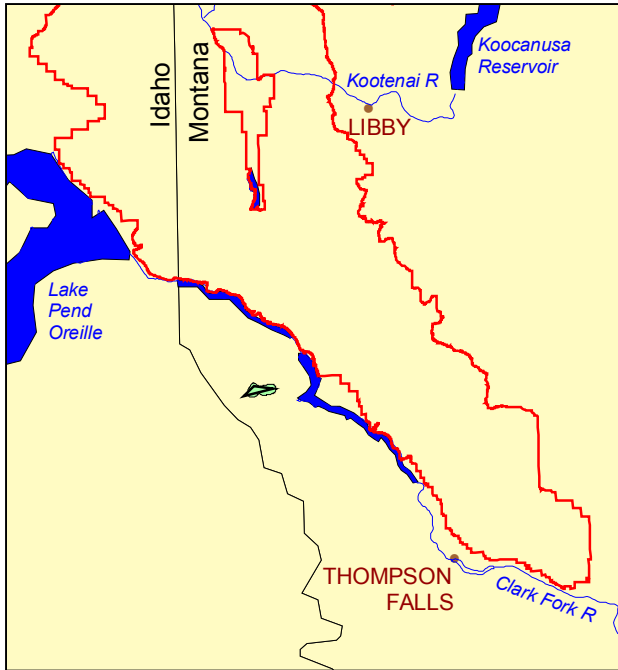


Figure 13. Minimum convex and 95% adaptive kernel (shaded) life ranges of male grizzly bear 579 in the Cabinet-Yaak recovery zone. 2002.

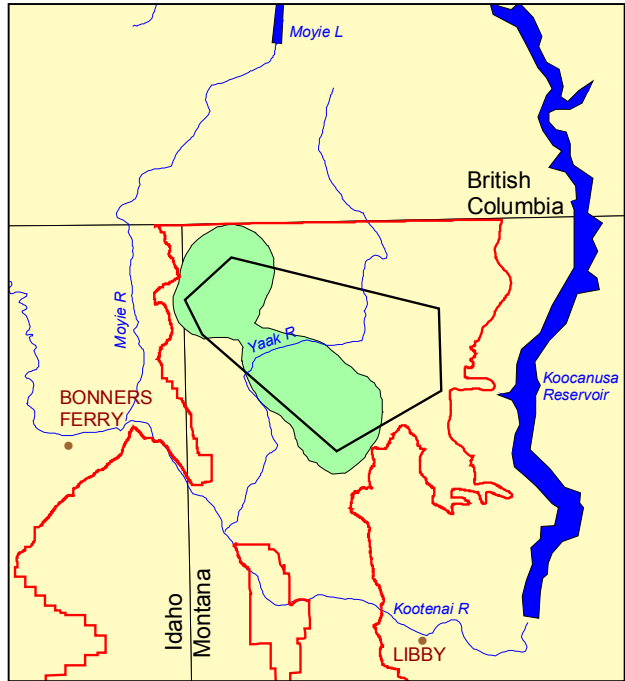


Figure 14. Minimum convex and 95% adaptive kernel (shaded) life ranges of male grizzly bear 101 in the Cabinet-Yaak recovery zone, 1986-87.

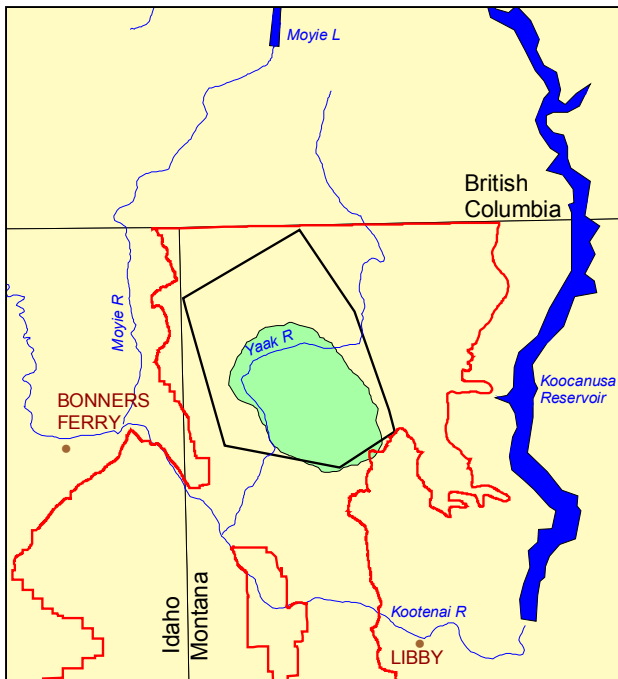


Figure 15. Minimum convex and 95% adaptive kernel (shaded) life ranges of female grizzly bear 106 in the Cabinet-Yaak recovery zone, 1986-99.

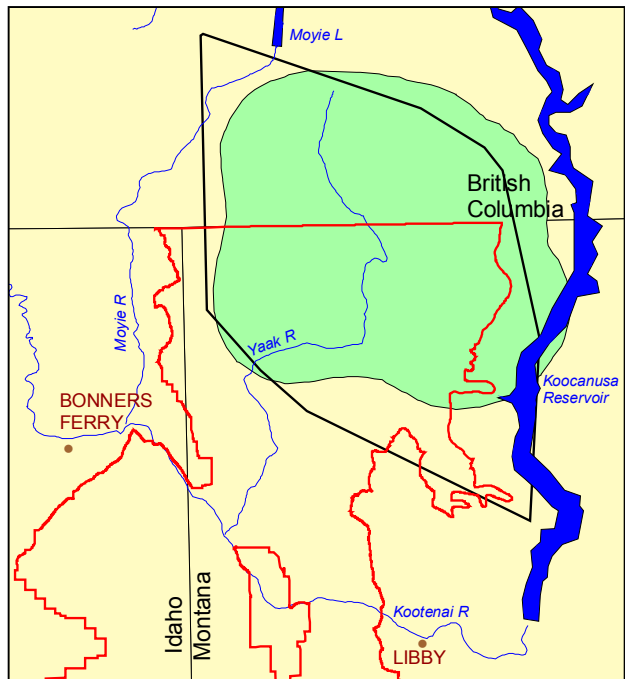


Figure 16. Minimum convex and 95% adaptive kernel (shaded) life ranges of male grizzly bear 128 in the Cabinet-Yaak recovery zone, 1987-92.

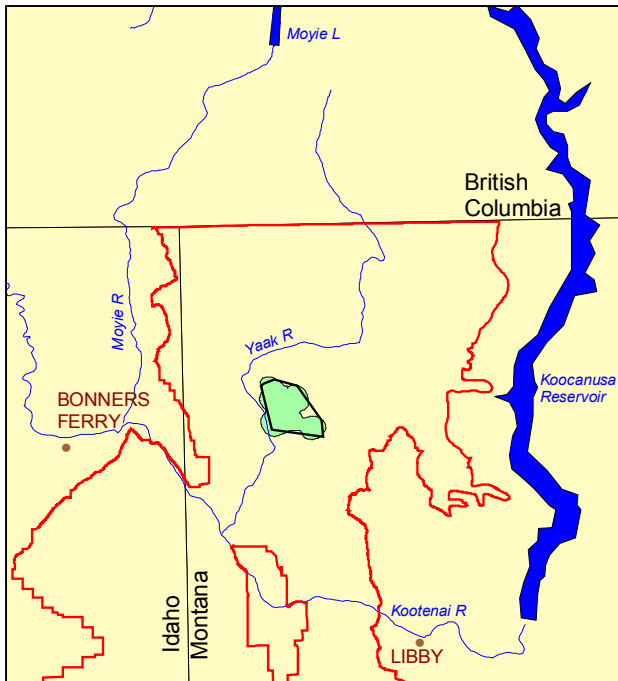


Figure 17. Minimum convex and 95% adaptive kernel (shaded) life ranges of female grizzly bear 129 in the Cabinet-Yaak recovery zone, 1987-89.

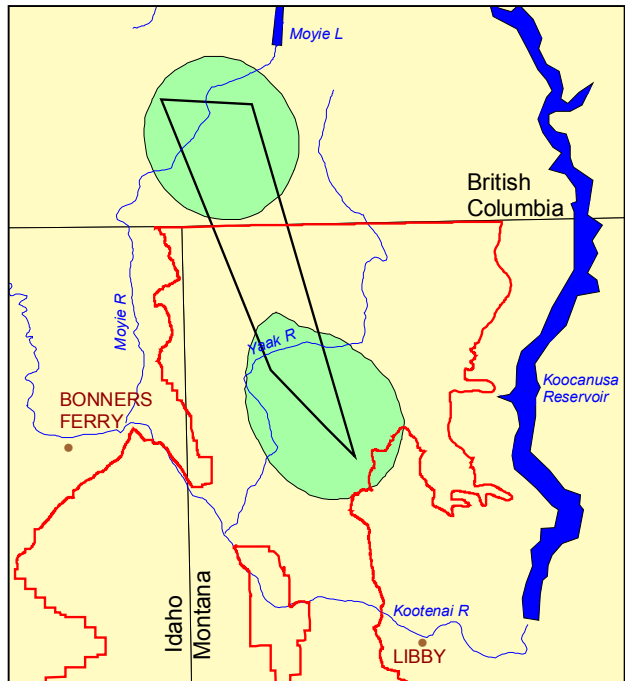


Figure 18. Minimum convex and 95% adaptive kernel (shaded) life ranges of male grizzly bear 134 in the Cabinet-Yaak recovery zone, 1987-98.

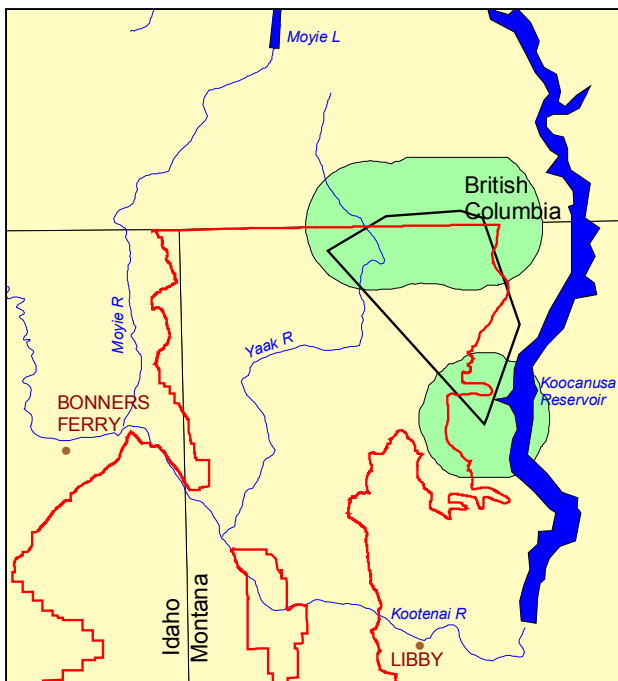


Figure 19. Minimum convex and 95% adaptive kernel (shaded) life ranges of male grizzly bear 192 in the Cabinet-Yaak recovery zone, 1990.

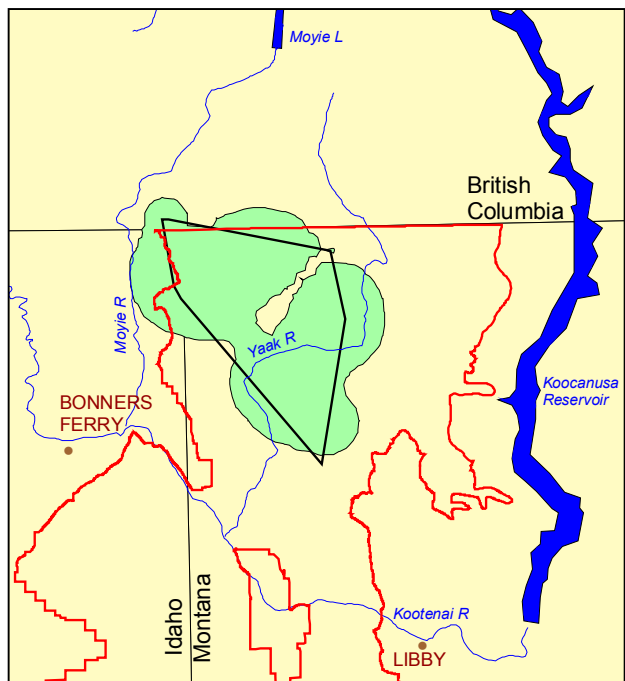


Figure 20. Minimum convex and 95% adaptive kernel (shaded) life ranges of male grizzly bear 193 in the Cabinet-Yaak recovery zone, 1990.

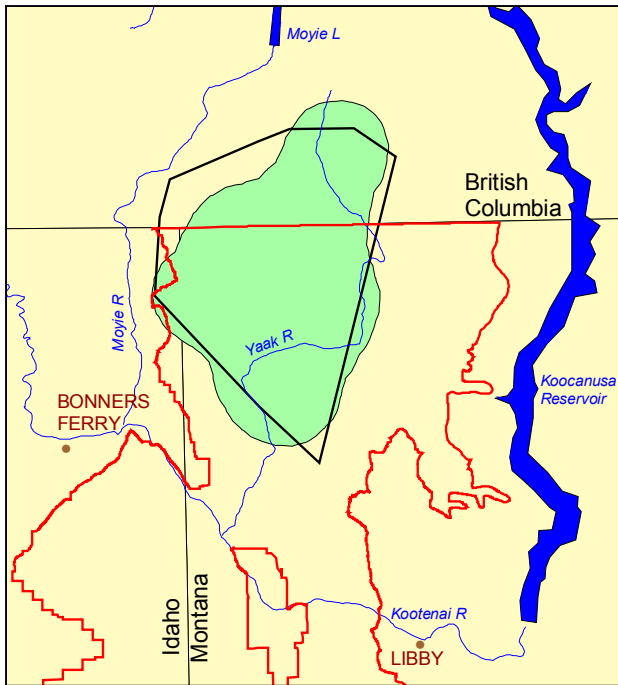


Figure 21. Minimum convex and 95% adaptive kernel (shaded) life ranges of female grizzly bear 206 in the Cabinet-Yaak recovery zone, 1991-94.

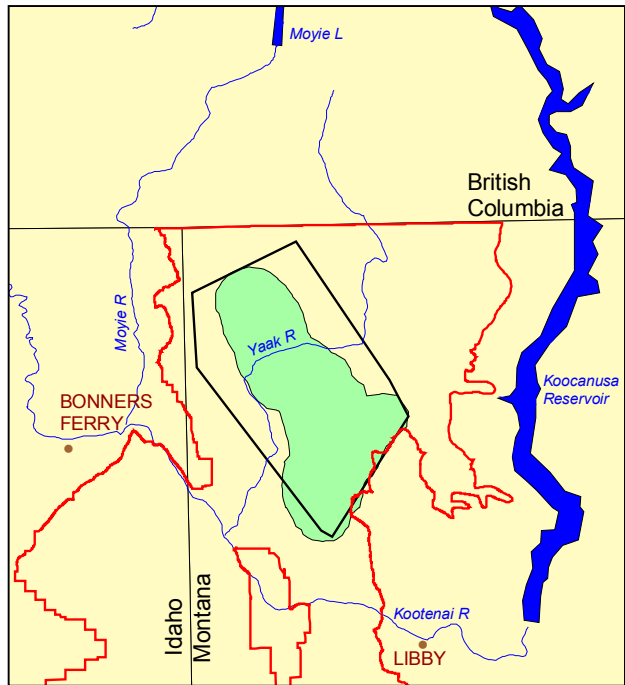


Figure 22. Minimum convex and 95% adaptive kernel (shaded) life ranges of male grizzly bear 244 in the Cabinet-Yaak recovery zone, 1992-94.

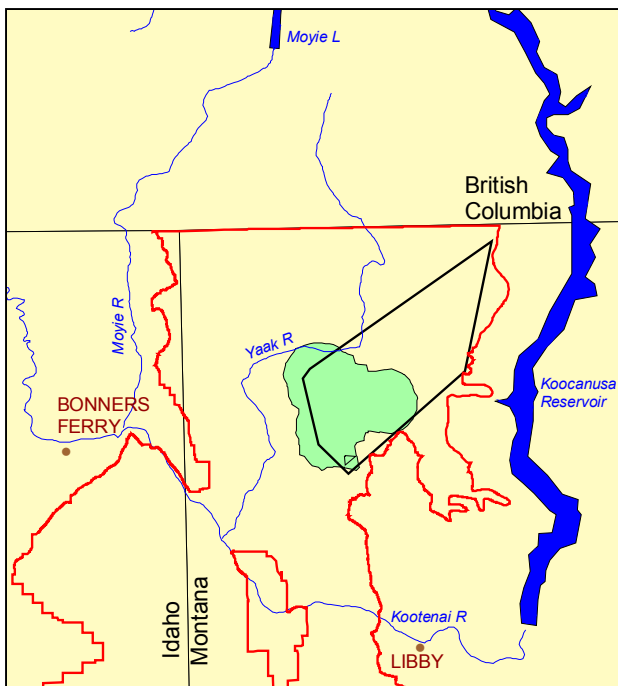


Figure 23. Minimum convex and 95% adaptive kernel (shaded) life ranges of male grizzly bear 302 in the Cabinet-Yaak recovery zone, 1994-96.

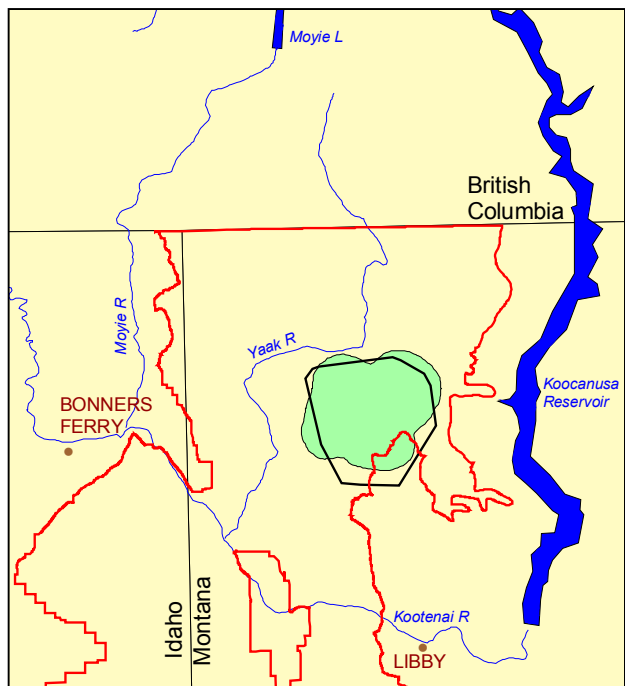


Figure 24. Minimum convex and 95% adaptive kernel (shaded) life ranges of female grizzly bear 303 in the Cabinet-Yaak recovery zone, 1994-01.

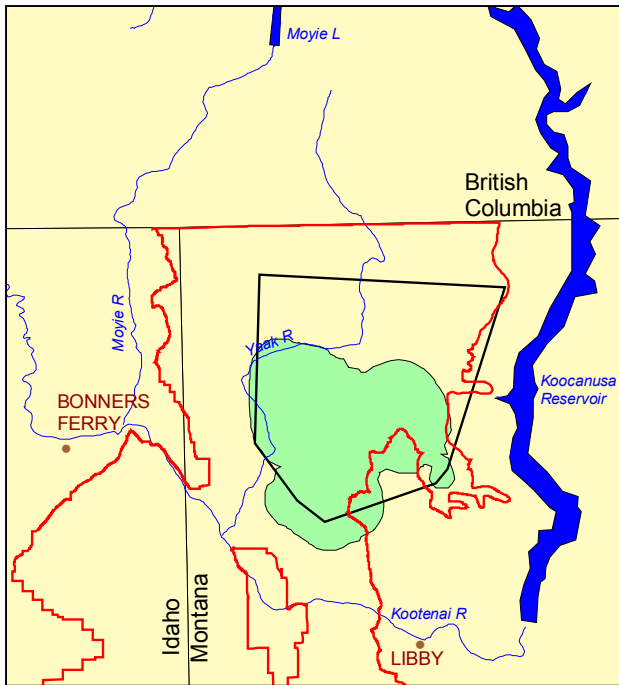


Figure 25. Minimum convex and 95% adaptive kernel (shaded) life ranges of male grizzly bear 342 in the Cabinet-Yaak recovery zone, 1996-99.

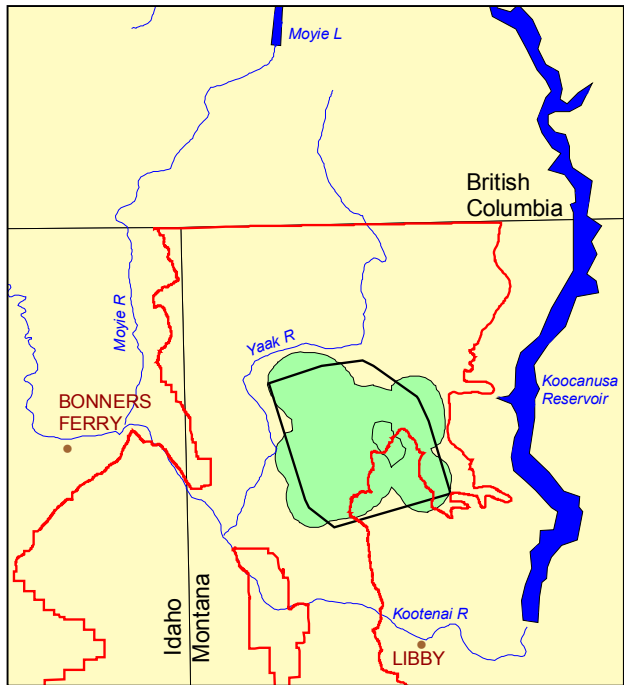


Figure 26. Minimum convex and 95% adaptive kernel (shaded) life ranges of male grizzly bear 363 in the Cabinet-Yaak recovery zone, 1996-99.

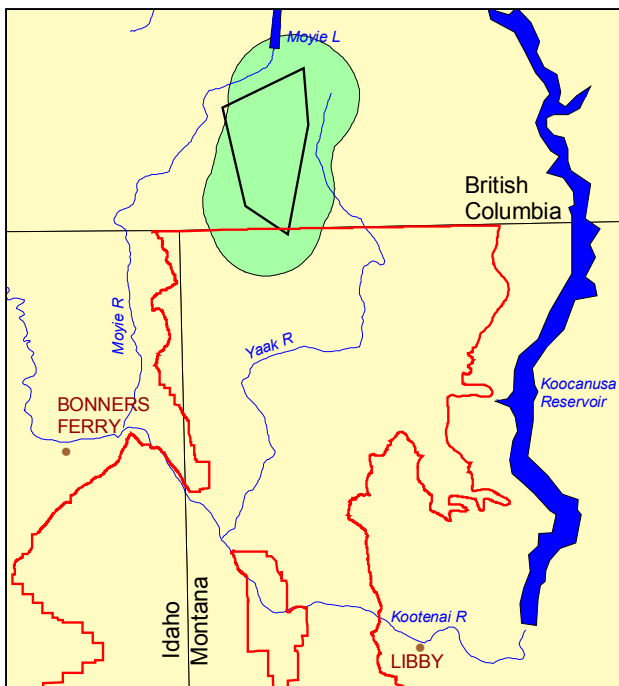


Figure 27. Minimum convex and 95% adaptive kernel (shaded) life ranges of male grizzly bear 355 in the Cabinet-Yaak recovery zone, 1996.

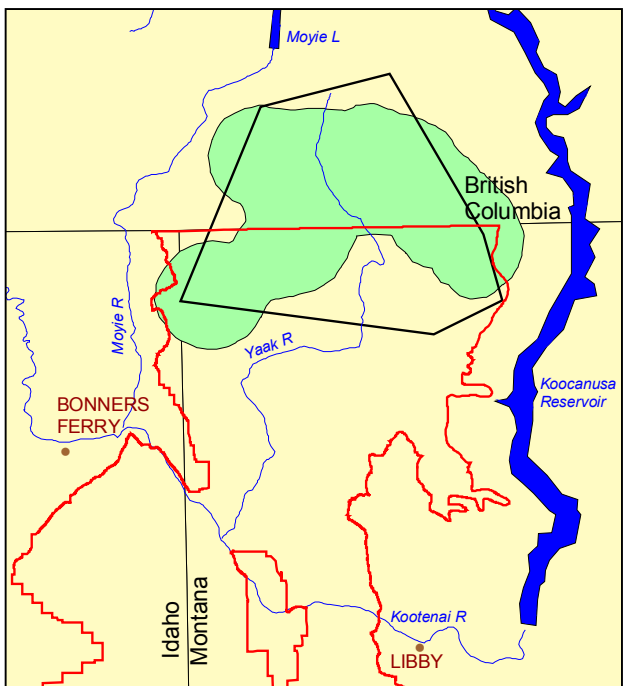


Figure 28. Minimum convex and 95% adaptive kernel (shaded) life ranges of male grizzly bear 358 in the Cabinet-Yaak recovery zone, 1996-98.

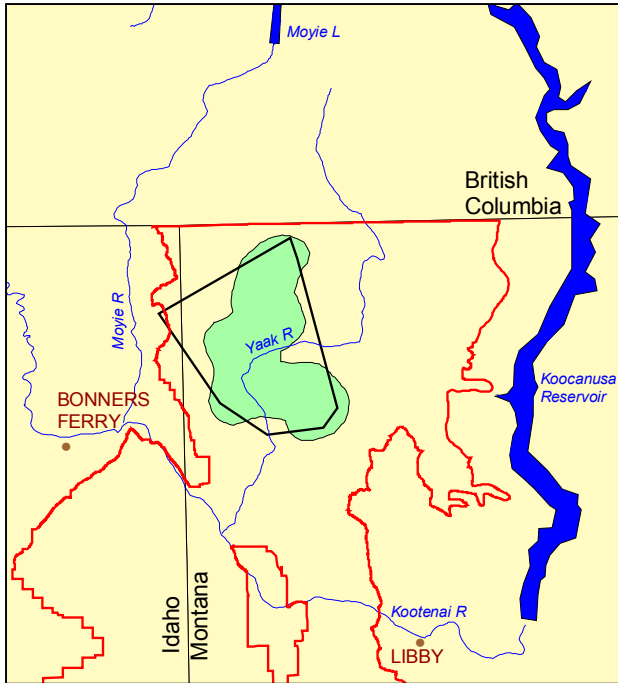


Figure 29. Minimum convex and 95% adaptive kernel (shaded) life ranges of female grizzly bear 354 in the Cabinet-Yaak recovery zone, 1997-99.

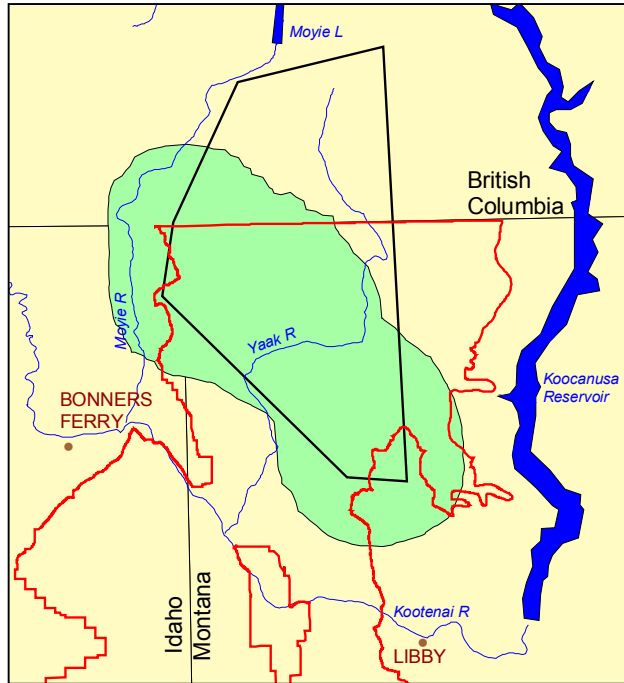


Figure 30. Minimum convex and 95% adaptive kernel (shaded) life ranges of male grizzly bear 386 in the Cabinet-Yaak recovery zone, 1997-98.

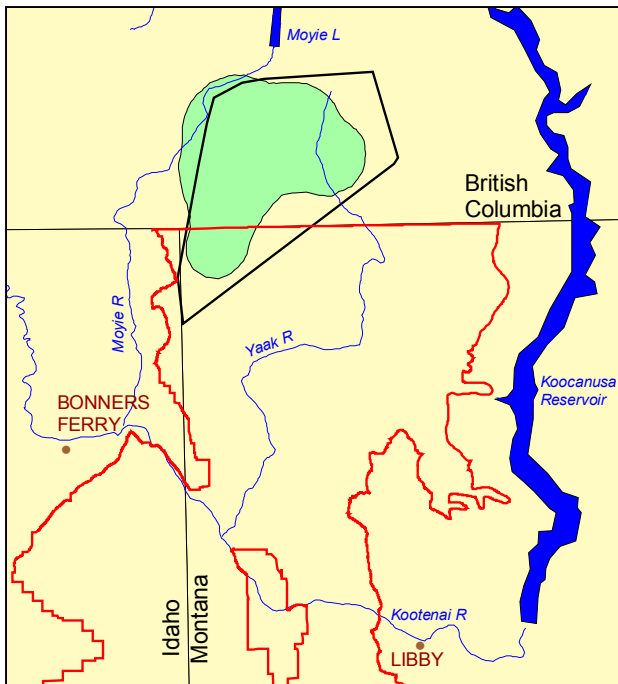


Figure 31. Minimum convex and 95% adaptive kernel (shaded) life ranges of female grizzly bear 538 in the Cabinet-Yaak recovery zone, 1997-02.

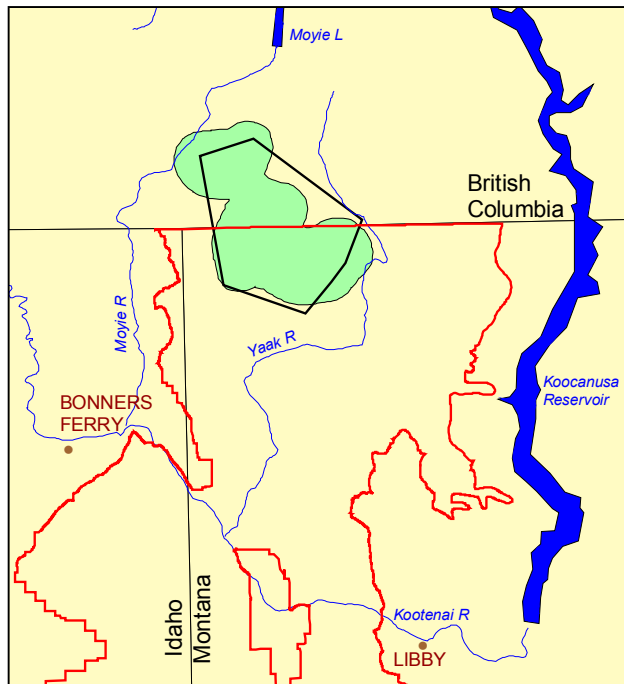


Figure 32. Minimum convex and 95% adaptive kernel (shaded) life ranges of female grizzly bear 592 in the Cabinet-Yaak recovery zone, 1999-00.

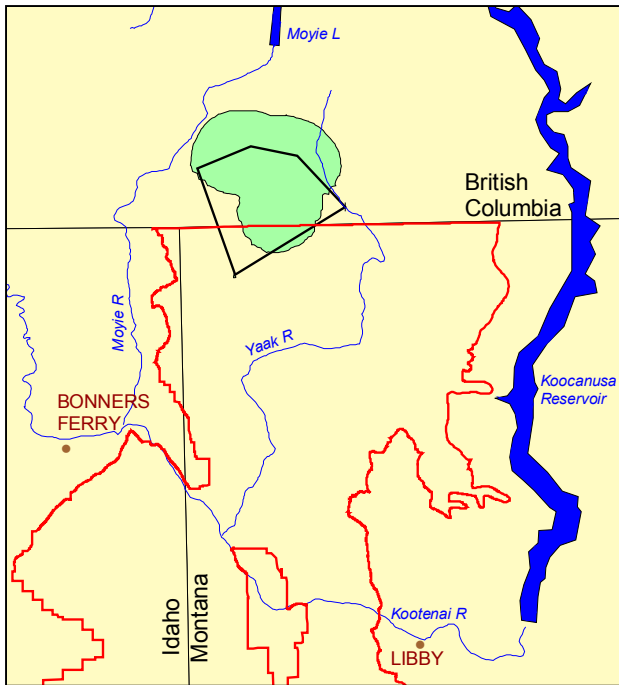


Figure 33. Minimum convex and 95% adaptive kernel (shaded) life ranges of female grizzly bear 596 in the Cabinet-Yaak recovery zone, 1999.

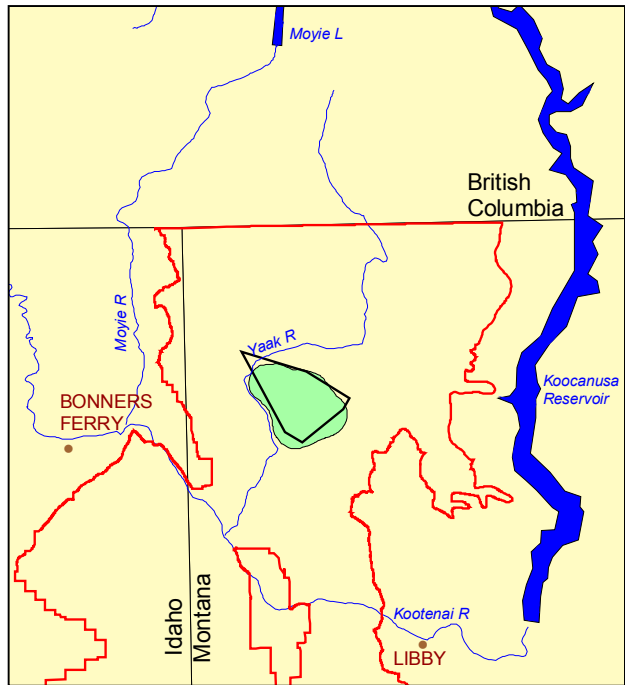


Figure 34. Minimum convex and 95% adaptive kernel (shaded) life ranges of female grizzly bear 353 in the Cabinet-Yaak recovery zone, 2002.

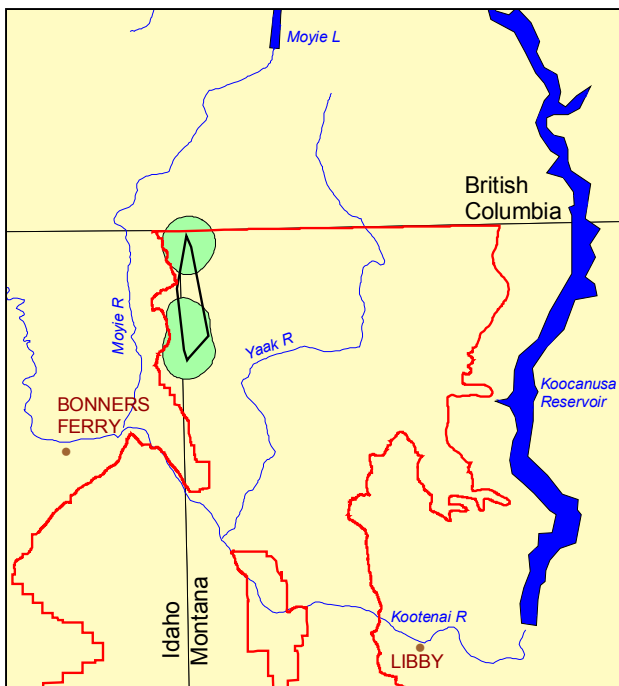


Figure 35. Minimum convex and 95% adaptive kernel (shaded) life ranges of male grizzly bear 651 in the Cabinet-Yaak recovery zone, 2002.

Grizzly Bear Denning Chronology

Den entry and exit dates were summarized by week during 1983-02. Forty-four den exit dates were available for summarization. Dates ranged from the third week of March to the second week of May. Thirty-five exit dates occurred from the first through fourth weeks of April. Grizzly bears in the Cabinet Mountains generally exited dens at least one week later than bears in the Yaak river drainage. Males appear to exit dens earlier than females.

Forty-nine den entry dates ranged from the third week of October to the last week of December. Twenty-six of these dates ranged from the third week of November through the second week of December. Grizzly bears in the Cabinet Mountains generally entered dens at least 2 to 3 weeks earlier than bears in the Yaak river drainage. Males generally entered dens later than females.

Grizzly Bear Use of Habitat Components

Grizzly bear use of habitat components was summarized on a seasonal basis. Spring was defined as den exit through 15 June, summer was 16 June through 15 September, and autumn was 16 September through den entry. Radiolocation sample sizes for the Cabinet Mountains were: 93 in spring, 300 in summer, and 101 in autumn. Radiolocation sample sizes for the Yaak River were: 413 in spring, 879 in summer, and 607 in autumn. Den site sample sizes were 11 in the Cabinet Mountains and 45 in the Yaak River.

Radio collared grizzly bears in the Cabinet Mountains and Yaak River made greatest annual use of closed timber, timbered shrubfields, mixed shrub snowchutes, mixed shrub/cutting units, alder shrubfields, huckleberry shrubfields, and graminoid and beargrass sidehill parks (Fig. 36). Primary differences in annual use of habitat components include greater use of mixed shrub snowchutes, alder shrubfields, huckleberry shrubfields, and beargrass sidehill parks in the Cabinet Mountains and greater use of closed timber, timbered shrubfields, mixed shrub/cutting units, and graminoid sidehill parks in the Yaak River. A brief description of all 19 habitat components is provided in Appendix 2.

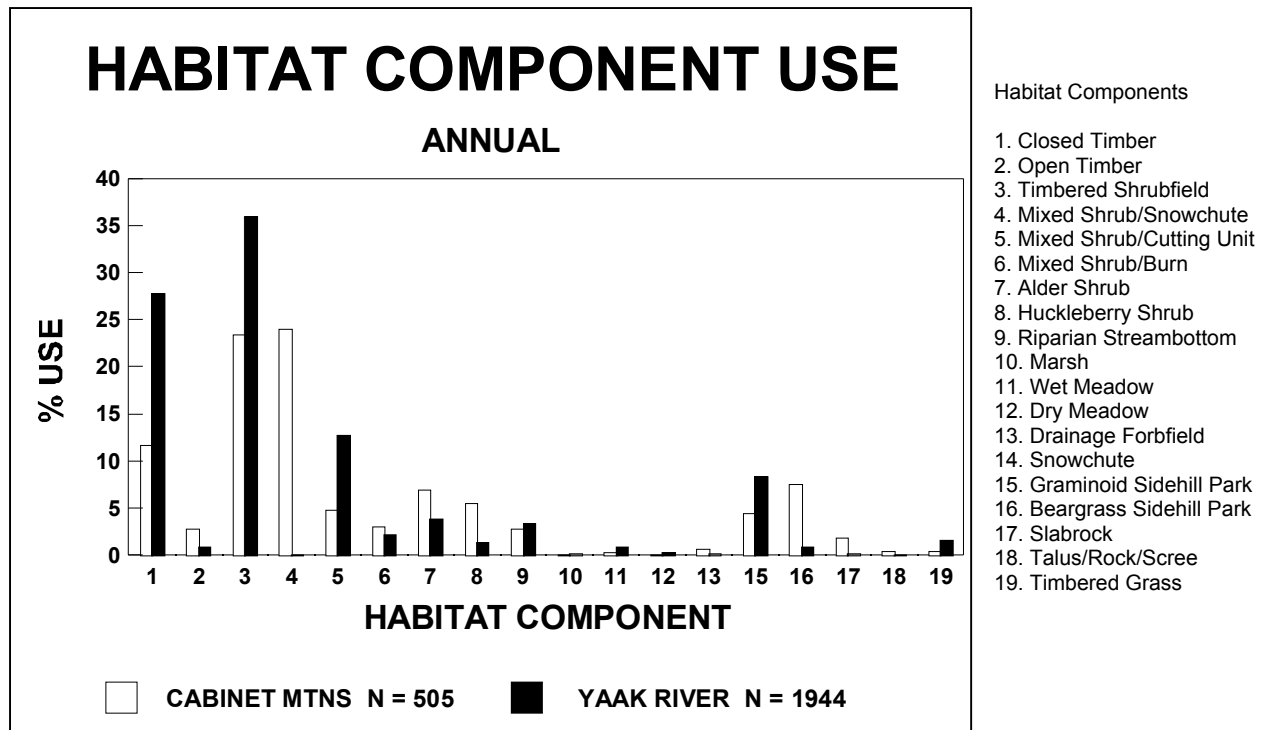


Figure 36. Annual habitat component use in the Cabinet Mountains and Yaak River, 1983-2002.

Spring use of habitat components by radio collared grizzly bears in the Cabinet Mountains and the Yaak River drainage was dominated by closed timber, timbered shrubfields, mixed shrub snowchutes, mixed shrub cutting units, alder shrubfields, and graminoid sidehill parks (Fig. 37). Notable differences between the two study areas include heavier use of snowchutes, alder, and graminoid parks in the Cabinet Mountains and heavier use of closed timber, timbered shrubfields, and cutting units in the Yaak River. Food habits indicate that bears are utilizing grasses, sedges, succulent forbs, and the corms of glacier lily and biscuitroot at this time of the year (Kasworm and Thier 1993). Snowchutes, cutting units, alder, and graminoid parks provide many of these items at this time.

Summer use of habitat components by radio collared grizzly bears in the Cabinet Mountains and the Yaak River drainage was dominated by closed timber, timbered shrubfields, mixed shrub snowchutes, mixed shrub cutting units, mixed shrub burns, alder shrubfields, huckleberry shrubfields, graminoid sidehill parks, and beargrass sidehill parks (Fig. 38). Differences between the two study areas include heavier use of snowchutes, huckleberry shrubfields, and beargrass parks in the Cabinet Mountains and heavier use of closed timber, timbered shrubfields, cutting units, and graminoid parks in the Yaak River. Food habits indicate heavy use of succulent forbs, insects, and berries (mostly huckleberries) (Kasworm and Thier 1993).

Autumn use of habitat components by radio collared grizzly bears in the Cabinet Mountains and the Yaak River drainage was dominated by closed timber, timbered shrubfields, mixed shrub snowchutes, mixed shrub cutting units, mixed shrub burns, alder shrubfields, huckleberry shrubfields, graminoid sidehill parks, and beargrass sidehill parks (Fig. 39). Differences between the two study areas include heavier use of snowchutes, huckleberry shrubfields, and beargrass parks in the Cabinet Mountains and heavier use of closed timber,

timbered shrubfields, cutting units, and graminoid parks in the Yaak River. Autumn bear diets reverted back to grasses and sedges during late rains and subsequent green-up. Berries can still be important at this time of year when huckleberries are still available at higher elevations or mountain ash berries which persist on plants beyond first snowfall. Bears also utilize carrion and gut piles from hunter harvested or wounded deer and elk.

Many of the differences in use between the Cabinet Mountains and the Yaak River study areas appear related to amounts or availability of these components in each study area. Much of the use of closed timber and timbered shrubfields occurred adjacent to other components that provided food and may have been used for cover or bedding areas.

Den use of habitat components by radio collared grizzly bears in the Cabinet Mountains and the Yaak River drainage was dominated by closed timber, timbered shrubfields, graminoid sidehill parks, and beargrass sidehill parks (Fig. 40). Differences between the two study areas include heavier use of beargrass parks in the Cabinet Mountains and heavier use of closed timber, timbered shrubfields, and graminoid parks in the Yaak River.

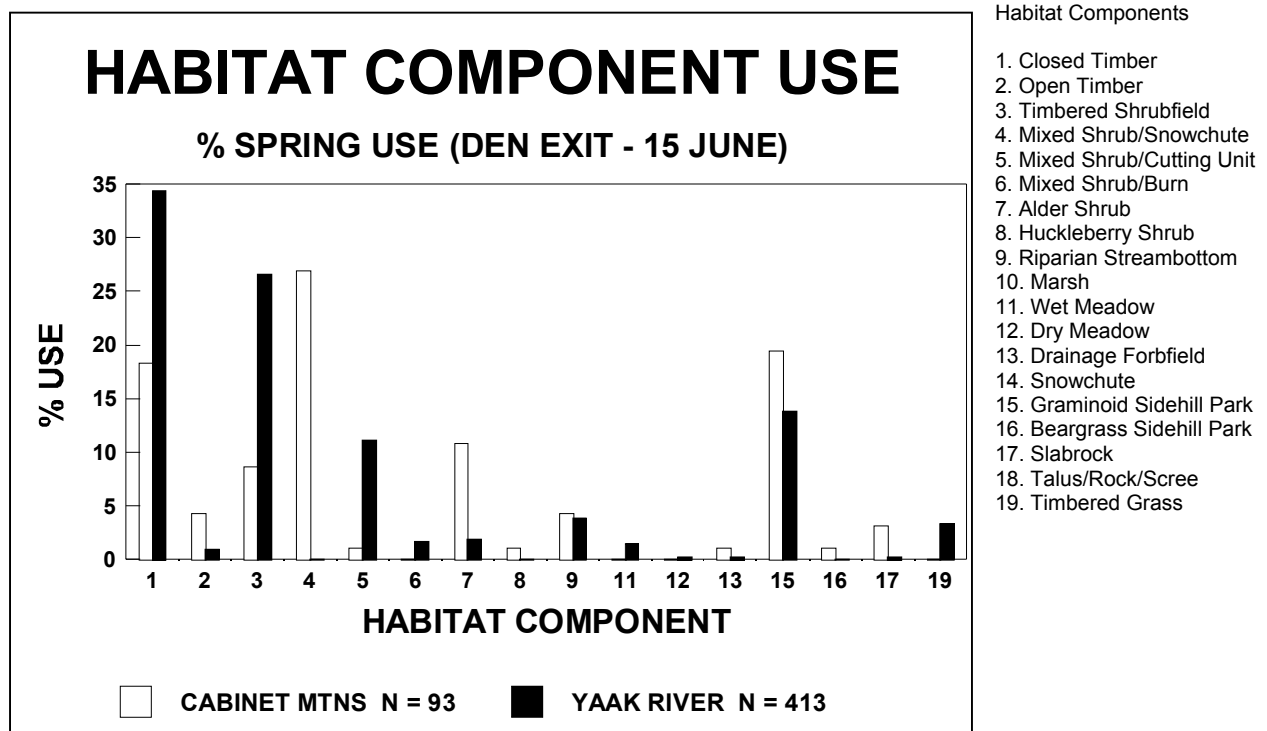


Figure 37. Spring habitat component use in the Cabinet Mountains and Yaak River, 1983-2002.

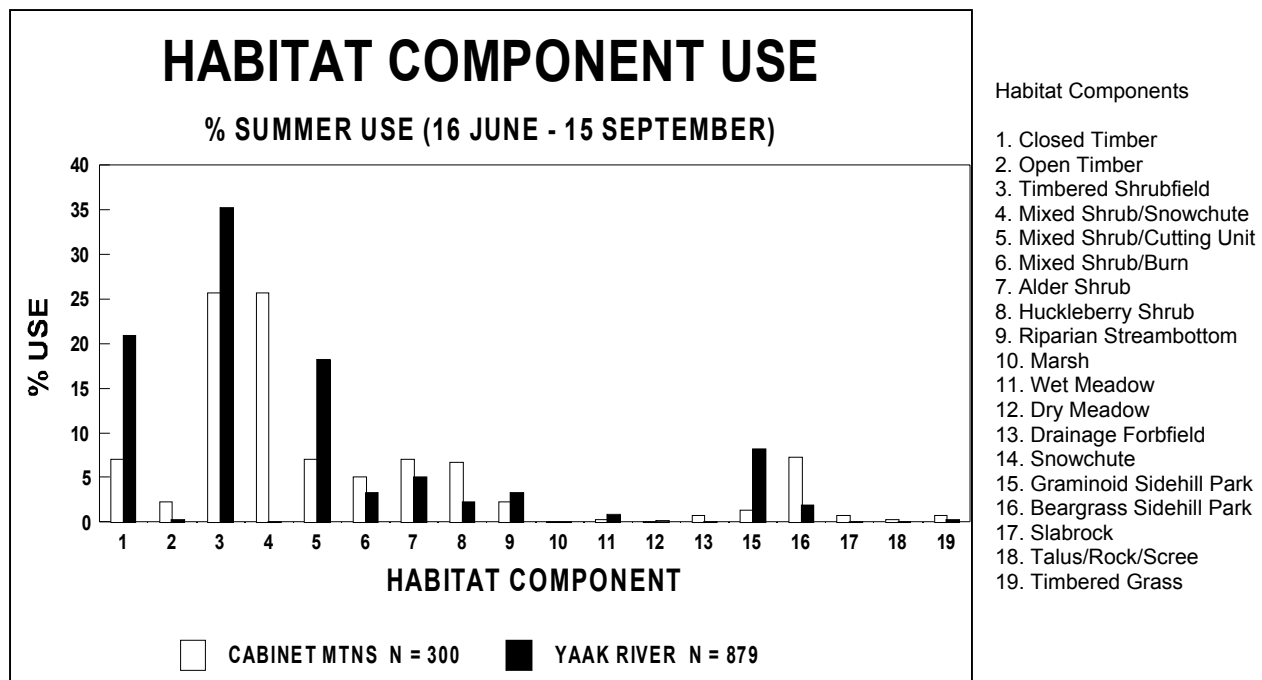


Figure 38. Summer habitat component use in the Cabinet Mountains and Yaak River, 1983-2002.

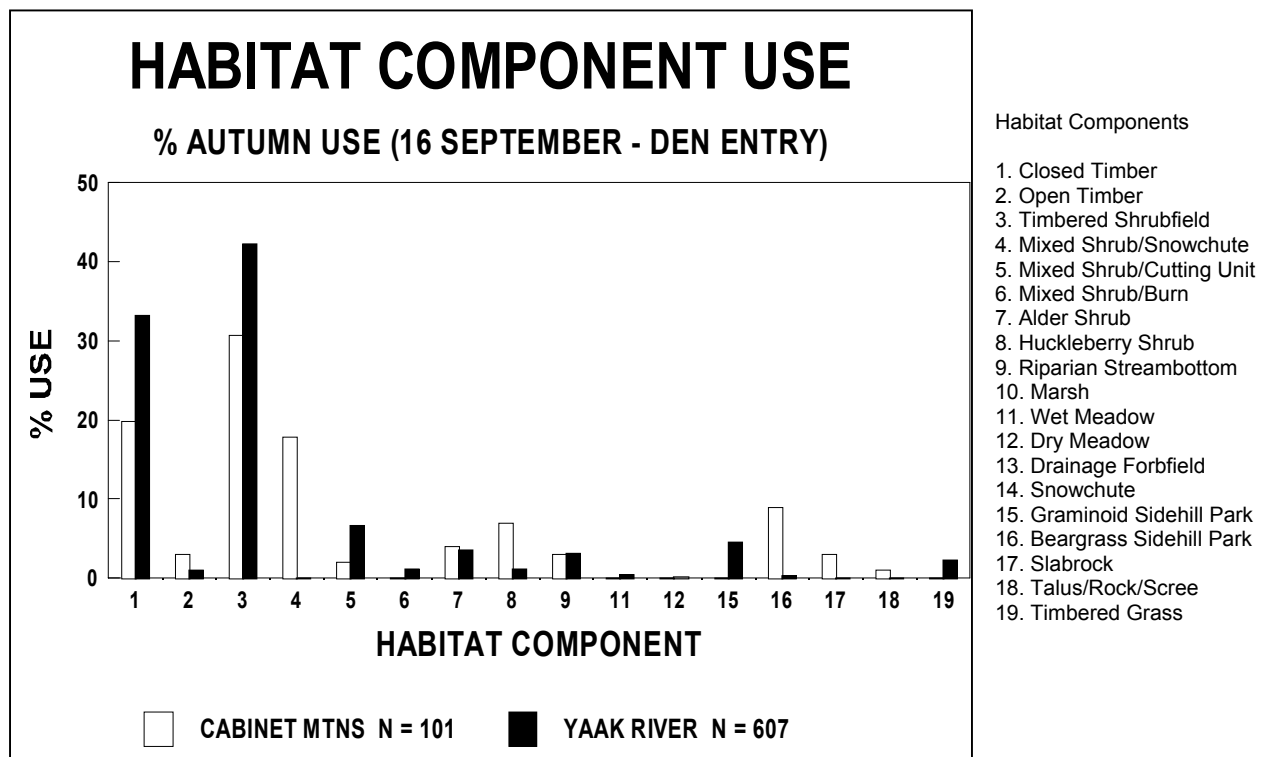


Figure 39. Autumn habitat component use in the Cabinet Mountains and Yaak River, 1983-2002.

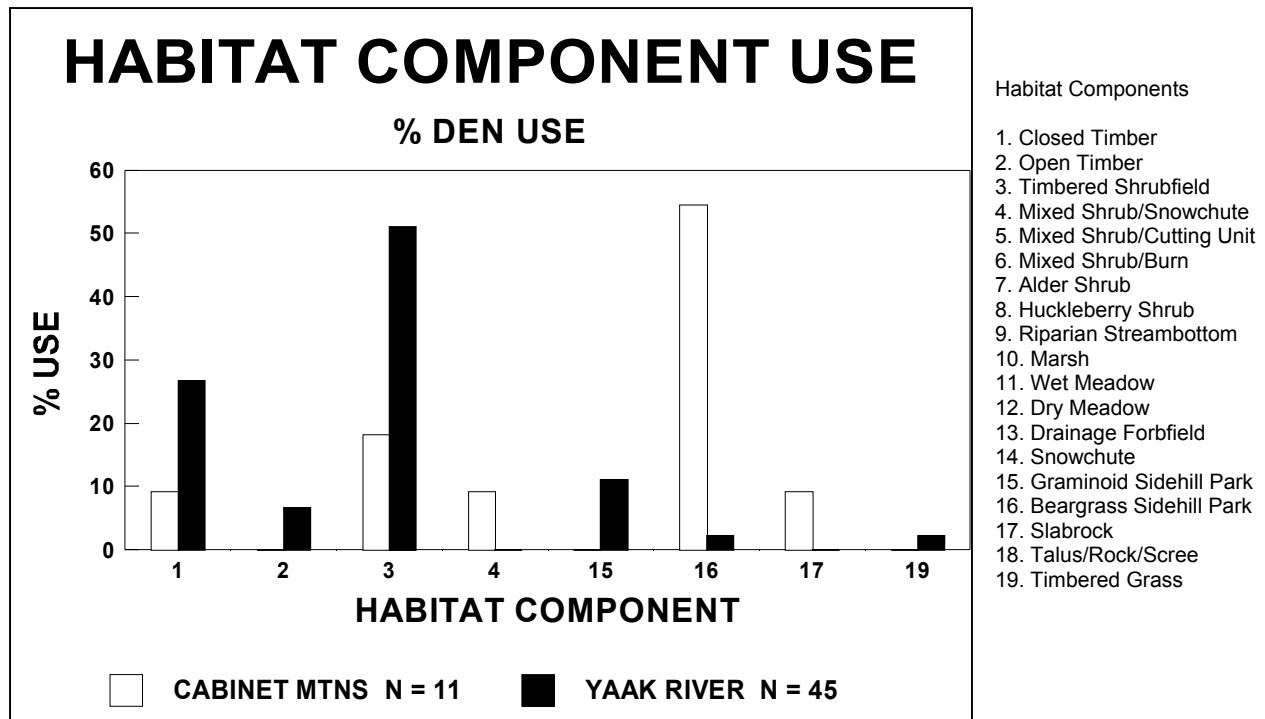


Figure 40. Den habitat component use in the Cabinet Mountains and Yaak River, 1983-2002

Grizzly Bear Use by Elevation

Differences in elevation between the Cabinet Mountains and the Yaak River study areas are reflected in the bear location data from both areas (Fig. 41). Annual mean elevation used by grizzly bears in the Cabinets Mountains was 1,635 meters compared to 1,486 meters for the Yaak River. Monthly mean elevation followed similar patterns with Cabinet Mountain grizzly bears utilizing higher elevations during most months except November. Sample size in the Cabinet Mountains during November was small, but bears were generally forced into lower elevations by snowfall prior to den entry and may have been responding to increased amount of carrion in the form of gut piles and wounded animals from hunters. Mean den elevation in the Cabinet Mountains was 1,911 meters and 1,699 meters in the Yaak River.

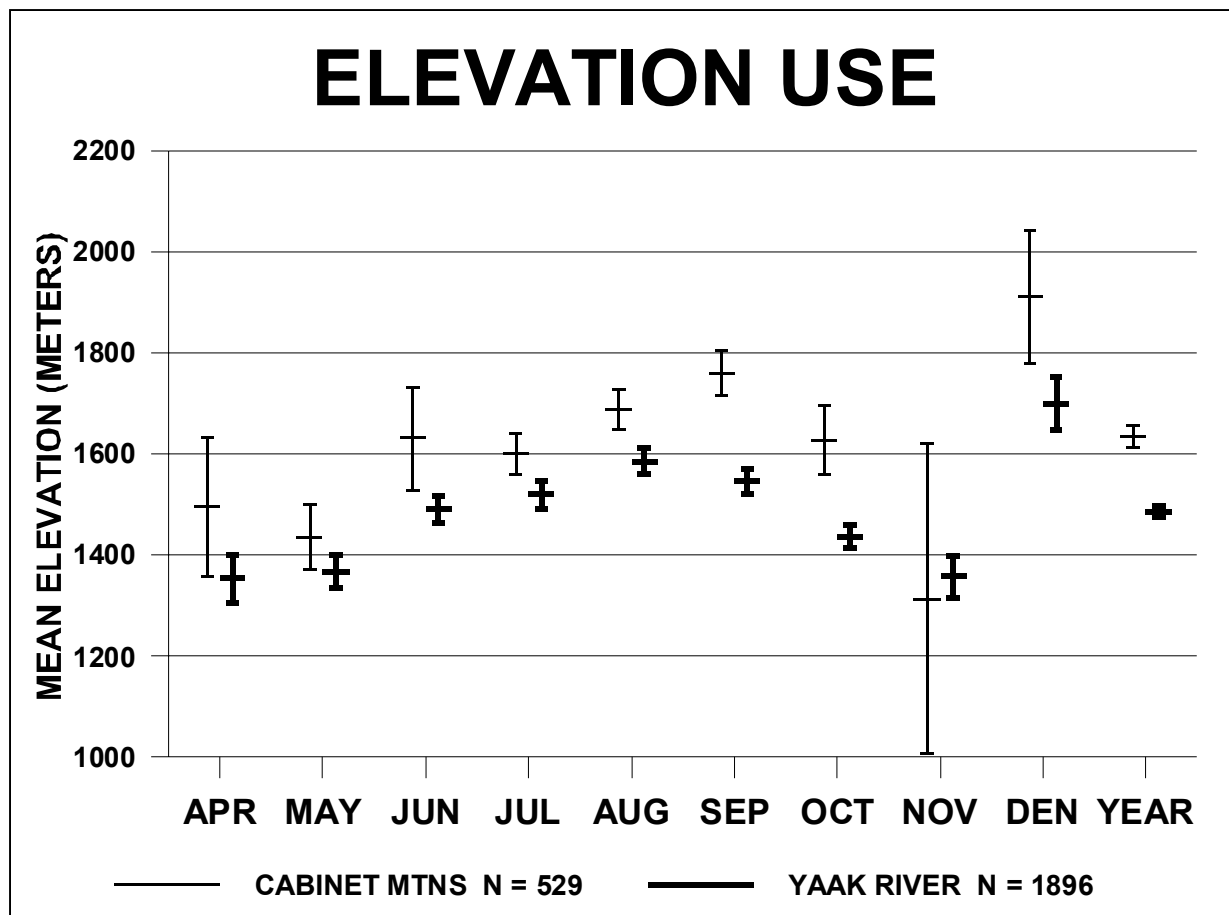


Figure 41. Mean elevation and 95% confidence intervals of radiolocations in the Cabinet Mountains and the Yaak River, 1983-2002.

Grizzly Bear Use by Aspect

Use of aspect by grizzly bears varied between the Cabinet Mountains and Yaak River study areas, particularly during early spring (Figs. 42-43). South aspects received greatest use by grizzly bears in the Cabinet Mountains during April and May. However, grizzly bears in the Yaak area showed more balanced use of all aspects during that time. Generally grizzly bears in the Cabinet Mountains made greater use of southerly slopes during all months than grizzly bears in the Yaak River. South aspects were most heavily used by grizzly bears in the Cabinet Mountains for den sites, but used least in the Yaak River. Elevation, slope, and the resultant vegetation in addition to snow melt likely interacted to produce the observed patterns of use.

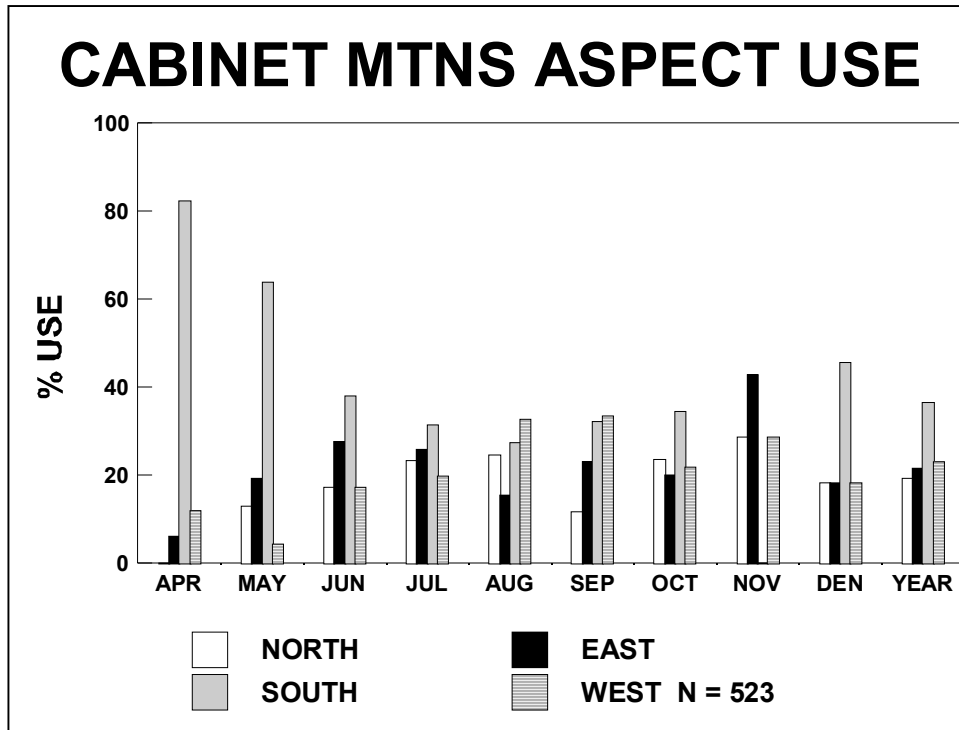


Figure 42. Aspect of radiolocations in the Cabinet Mountains, 1983-2002.

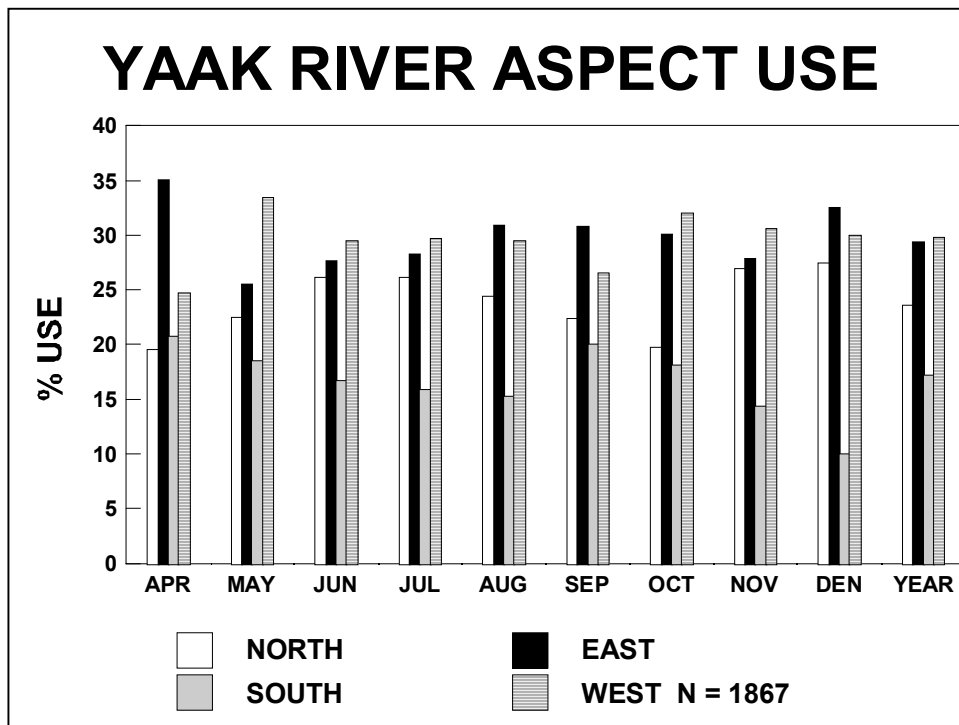


Figure 43. Aspect of radiolocations in the Yaak River, 1986-2002.

Grizzly Bear Spring Habitat Description

After den emergence in spring, bears seek sites that melt snow early and produce green vegetation. These sites can often overlap with ungulate winter range and provide carrion from winterkills. Spring use of habitat in both study areas (April and May) indicated use of low elevation sites. Cabinet Mountains radiolocations indicated most use below 1,600 m with primary use of southerly facing snowchutes, alder shrubfields, grassy sidehill parks, and closed timber. Yaak River radiolocations indicated most use below 1,400 m with primary use of closed timber, timbered shrubfields, cutting units, and grassy sidehill parks on virtually all aspects. This may be due to the lower elevation of the Yaak River area, which allows the snow to melt, and vegetation to green-up earlier than the Cabinet Mountains.

Grizzly Bear Population and Mortality

Observations and captures of grizzly bears by study personnel in the Yaak study area were examined to evaluate minimum population size for the entire study period from 1989-2002. Individuals not radio collared were separated by size, age, location, coloration, genetic information, and reproductive status. Some sightings believed to be the same individuals may actually consist of separate additional individuals. Age and genetic information now suggest that two grizzly bears (342 and 363) are not offspring of bear 106 as previously believed. Additional new information may change individual status or relationships. Less capture activity occurred during 1998-2001 because trapping personnel were not available during June and forest fires or hot, dry conditions eliminated trapping activity during August and September. This has reduced the marked sample and ability to discern new individuals. Trapping activity increased in 2002.

Forty-six individuals were identified with 24 bears radio collared and 22 unmarked individuals from 1989-2002 (Table 8). Seventeen of these animals are known or suspected to have died during 1989-02. Human causes were linked to 8 of these mortalities. The remaining 8 are believed to have died of natural causes during 1999-2001. Seven of these 8 mortalities involved newborn cubs. The increase in natural mortality beginning in 1999 may be linked to poor food production during 1998-2000. Huckleberry production during these years was about half the 11-year average. Huckleberries are the major source of late summer food for bears in the Cabinet-Yaak area that enable them to accumulate sufficient fat to survive the denning period and enable females to produce and nurture cubs. Poor nutrition often causes females to not produce cubs in the following year. Poor food production may also cause females to travel further for food, which may expose cubs to greater risk of mortality from predators or accidental deaths. Four of 7 cub mortalities have come from one female bear that lost litters of 2 cubs each during 2000 and 2001. Another mortality incident involved a female with 2 cubs that appear to have been killed by another bear in 1999. The effect of this cub mortality may be greatest in succeeding years when some of these animals might have been recruited to the reproductive segment of the population.

Similar observation, photograph, and capture information from the Cabinet Mountains was collected and summarized for 2001-2002 (Table 9). Few observations limit use of this information prior to 2001. The data set is limited and not comparable to the Yaak area data because of less effort expended in trapping and monitoring collared individuals. However, 11 different bears were identified by this technique during 2001-2002. Two of these individuals are known to be dead.

Table 8. Grizzly bears captured or observed by study personnel in the Yaak study, 1989-02.

Bear	Sex	Years Radioed or Observed	Comments
106	F	1989-1999	Radio collared 1986-99. Mortality 1999.
129	F	1989	Radio collared 1986-89. Mortality 1989.
128	M	1989-92, 1997	Radio collared 1989-92 and 1997.
192	M	1988-1990	Offspring bear 106. Radio collared 1989-90.
193	M	1988-1990	Offspring bear 106. Radio collared 1989-90. Possible mortality 1990.
206	F	1988-95, 1997	Offspring bear 106. Radio collared 1990-95. Observed 1997.
?	F	1990	& Consort of bear 128 spring 1990 in W. F. Yaak.
?	M	1990, 1994, 1996, 1999	Large, unmarked black male bear with 106 1990 & 1994, with 303 1996 & 1999.
?	?	1991-92	Offspring bear 106.
?	?	1991-92	Offspring bear 106.
244	M	1992-94	Radio collared 1992-94.
302	M	1993-96	Offspring of bear 106. Radio collared 1994-96. Mortality 1996.
303	F	1993-96, 1998-01	Offspring of bear 106. Radio collared 1994-96, 1998-01.
34	F	1993	Transplanted to Bloom Creek by BC 1993, captured in US 1993.
355	M	1993, 1996	Possible 1993 consort of 206. Radio collared 1996. Mortality 1996.
358	M	1993, 1996-98	Possible 1993 consort of 206. Radio collared 1996-98. Mortality 1999.
505	F	1994-95, 1998	Offspring bear 206. Radio collared 1994-95. Observed 1998.
?	?	1994-95, 1998	Offspring bear 206, sibling of bear 505. Observed 1994-95, 1998.
?	F	1994, 1998	Unmarked & Consort of 244, possibly unmarked & consort of 363.
353	F	1995-02	Offspring bear 106. Radio collared 1995-97 & 2002. Observed 1998 & 1999.
354	F	1995-99	Offspring bear 106. Radio collared 1995-99.
?	?	1995	Bear seen twice near 303 (similar or smaller size).
342	M	1996-99	Radio collared 1996-99.
363	M	1996-99	Radio collared 1996-99.
592	F	1998, 1999-00	Offspring of 206. Radioed 1999. Mortality 2000.
596	F	1997, 1999	Offspring of 206. Radioed 1999. Mortality 1999.
386	M	1997-98, 2000-01	Radio collared 1997-98. Possibly consort of 538 in 2000, 2001
384	M	1997	Radio collared 1997.
538	F	1997-02	Radio collared 1997-02.
?	?	1997-98	Offspring bear 538. Possibly unmarked subadult observed in 2001.
?	?	1999	Offspring bear 106. Mortality 1999.
?	?	1999	Offspring bear 106. Mortality 1999.
?	?	2000	Offspring bear 538. Mortality 2000.
?	?	2000	Offspring bear 538. Mortality 2000.
?	?	2000	Offspring bear 303. Mortality 2000.
552	F	2000,2001	Offspring bear 303.
?	?	2001	Offspring bear 538. Mortality 2001.
?	?	2001	Offspring bear 538. Mortality 2001.
?	F	2001	Unmarked yearling female killed by mistaken identity, 2001
?	?	2002	Offspring bear 353.
?	?	2002	Offspring bear 353.
?	?	2002	Offspring bear 353.
?	?	2002	Offspring bear 538.
?	?	2002	Offspring bear 538.
?	?	2002	Unknown bear. Mortality 2002.
651	M	2002	Radio collared 2002.

Table 9. Grizzly bears captured, photographed, or observed by study personnel in the Cabinet Mountains, 2001-02.

Bear	Sex	Years Radioed or Observed	Comments
?	?	2001-02	Unmarked adult observed in 2001 and 2002.
?	?	2001-2002	Unmarked subadult observed and photographed in 2001 and 2002.
?	F?	2001	Train collision mortality 2001.
577	F	2002	Mortality 2002. Sibling 578 and 579.
578	M	2002	Sibling 577 and 579.
579	M	2002	Sibling 577 and 578.
?	?	2002	Unmarked adult photographed in 2002.
?	F	2002	Adult female with 3 young photographed in 2002.
?	?	2002	One of 3 young photographed in 2002.
?	?	2002	One of 3 young photographed in 2002.
?	?	2002	One of 3 young photographed in 2002.

Minimum populations based on this information alone may indicate about 20 bears in the Yaak River portion of the CYGBRZ (survivors 1989-2002). This estimate is conservative because study personnel observations alone would not likely sample all bears in the area and the study has received several credible public reports of additional bears that are not included in this analysis. Since 1989 there have been credible sightings of bears in all 8 BMUs that make up the Yaak portion of the recovery area, with sightings of females with young in 6 BMUs. About half of the credible observations of females with young in these BMUs did not appear to come from marked bears. The actual number of unmarked females represented is unknown. A population estimate of 20-30 grizzly bears for the entire Yaak portion of the recovery zone would appear reasonable.

The Cabinet Mountains population was estimated to be 15 bears or fewer in 1988 (Kasworm and Manley 1988). There is insufficient data to dramatically change that estimate, but since 1988 the population was augmented with 4 young females, and there have been credible sightings of individual bears in all 14 BMUs that make up the Cabinet Mountains, with sightings of females with young in 7 BMUs since the completion of transplants. Based on these data, we conservatively estimate the population of the CYGBRZ at 30-40 grizzly bears.

Grizzly Bear Population Trend Estimate

A separate paper on survival rates, cause-specific mortality and population trend was presented at a conference during 2002. The paper is currently in review prior to publication.

Huckleberry Production

Eleven huckleberry transects were evaluated during 1989, 19 transects were evaluated during 1990-99, 18 in 2000, 20 in 2001 and 21 in 2002. Mean berry count per plot for all transects combined was 1.7 (95% CI \pm 0.1) during the study period. Mean annual berry counts during 1989-2002 ranged from 0.7-3.1 (Fig. 44). Low berry counts occurred in 1992 and 1998. High berry counts occurred in 1989, 1990, 1991, and 1996.

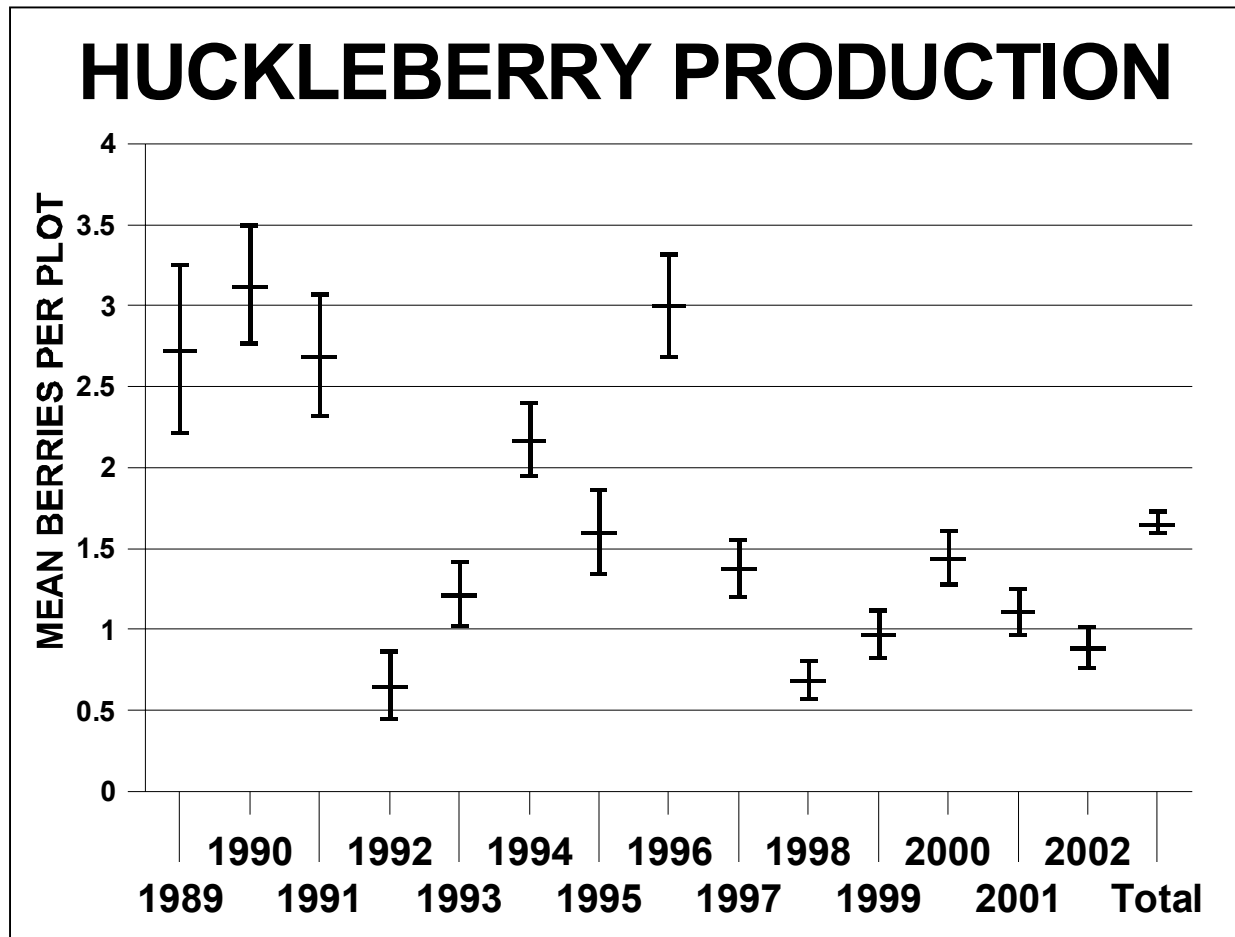


Figure 44. Mean berries per plot and 95% confidence intervals for huckleberry transects in the Yaak River, 1989-2002.

Buffaloberry Production

Five buffaloberry transects were evaluated during 1990-02. Mean berry counts per plot from all transects was 1.7 (95% CI \pm 0.3) during the study period. Mean berry counts ranged from 0.3 to 3.3 berries per plot from 1990 to 2002 (Fig. 45), with low counts occurring in 1992, 1995, 1998, 1999 and 2000. High counts occurred in 1990, 1991, 1996 and 2002.

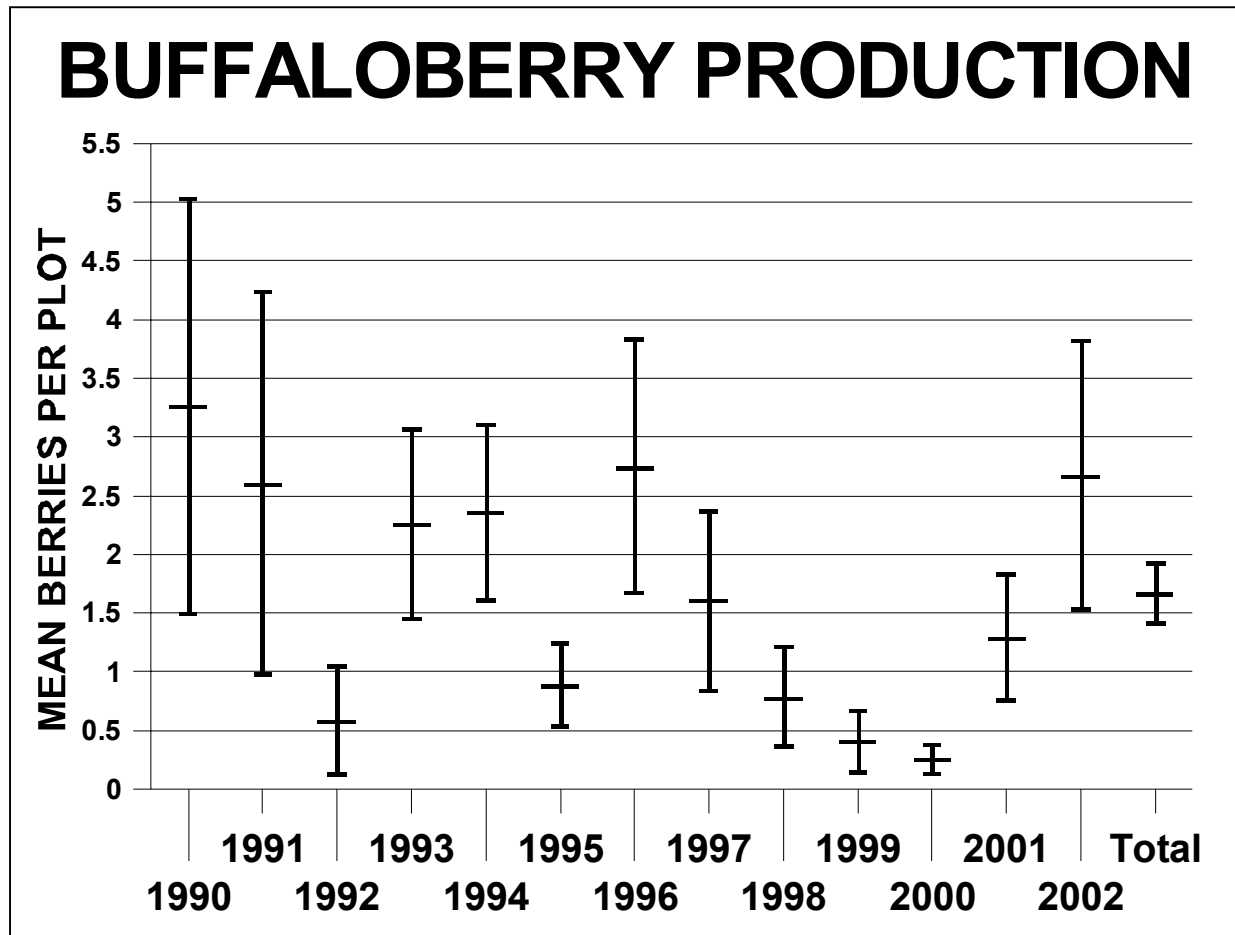


Figure 45. Mean berries per plot and 95% confidence intervals for buffaloberry transects in the Yaak River, 1989-2002.

Serviceberry Production

Five sites were evaluated for serviceberry production during 1990-96. One more site was added in 1997. Mean berry count per plant was 148 (95% CI \pm 23) during the study. Mean berry counts per plant varied from 12 to 355 during the years 1990 to 2002 (Fig. 46). Low counts occurred during 1992, 1994, 1998, 1999 and 2002. High counts occurred during 1990 and 1995.

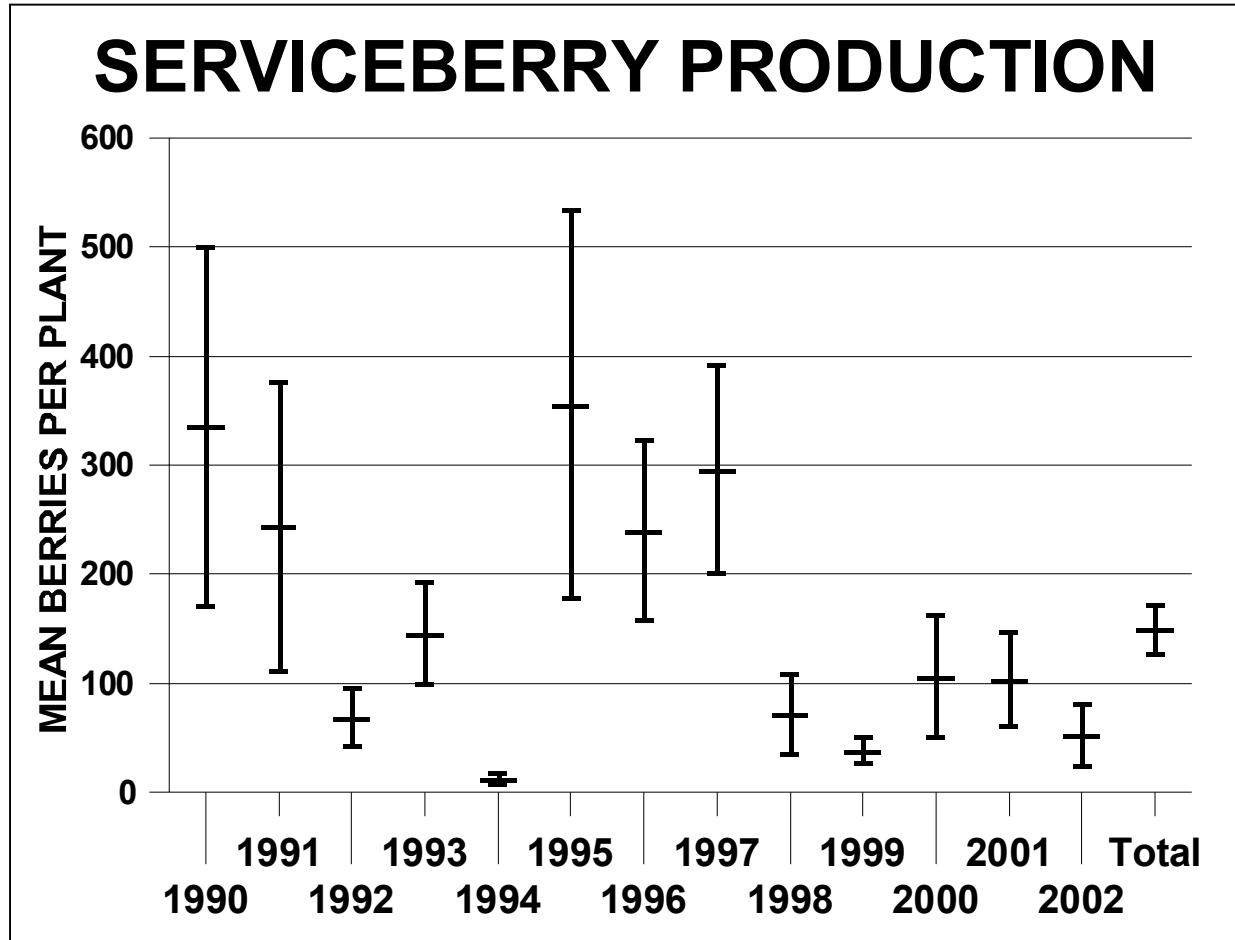


Figure 46. Mean berries per plot and 95% confidence intervals for serviceberry transects in the Yaak River, 1989-2002.

Mountain Ash Production

Three sites were evaluated for mountain ash production in 2001 and 2002. Mean berry counts were 392, and 147 respectively, with the lowest elevation site producing the most berries. The mean berry count for both years combined was 269 (95% CI \pm 72).

Low berry counts were recorded for huckleberry, buffaloberry, and serviceberry in 1992 and 1998. Low counts were also recorded for serviceberry in 1994, and 1999, and for

buffaloberry in 1995, 1999, and 2000. High berry counts for all three species occurred in 1990. All transects will continue to be evaluated each year during the study. Timing of sampling will be adjusted for peak berry ripening.

ACKNOWLEDGMENTS

Numerous individuals and agencies have contributed to bear research in the Cabinet-Yaak area since 1983. We are indebted to all of the following who have assisted this study. This study has been aided with project supervision from C. Servheen and administrative assistance from D. Hatch, E. Holman, and F. Thompson. We thank field biologists M. Burcham, P. Feinberg, J. Fuller, B. Giddings, S. Greer, B. Hastings, M. Jacobs, D. Johnson, M. Madel, T. Manley, G. Miller, C. Miller, A. Orlando, M. Parker, R. Pisciotta, J. Picton, K. Roy, C. Schloeder, T. Thier, T. Vecchiolli, and S. T. Wong.

Montana Department of Fish, Wildlife, and Parks personnel K. Aune, J. Brown, J. Obst, C. Ralph, B. Sterling, T. Thier, D. Vincent, and J. Williams provided field and administrative assistance. B. Groom and K. Kinden provided exceptional services as pilots. Numerous individuals from the U.S. Forest Service have provided agency support and contributed their assistance to this project. These include: M. Balboni, B. Castaneda, W. Johnson, and B. Summerfield. B. McLellan (B.C. Forest Service), F. Hovey (Simon Fraser Univ.), R. Demarchi, A. Fontana, B. Forbes, and G. Woods (B.C. Fish and Wildlife Branch) provided invaluable assistance in planning, trapping, and transport aspects of Cabinet Mountains population augmentation and Yaak River research.

The National Fish and Wildlife Foundation and Mr. E.O. Smith, Kootenai National Forest, Montana Department of Fish, Wildlife, and Parks, and the U.S. Fish and Wildlife Service provided Funding and support for this project. We wish to extend a special thanks to the citizens of the province of British Columbia for allowing us to remove grizzly bears from the Flathead drainage to augment populations in the Cabinet Mountains.

LITERATURE CITED

- Alt, G. L. 1984. Cub adoption in the black bear. *Journal of Mammalogy* 65:511-512.
- Alt, G. L. and J. J. Beecham. 1984. Reintroduction of orphaned black bear cubs into the wild. *Wildlife Society Bulletin* 12:169-174.
- Erickson, A. W. 1978. Grizzly bear management in the Cabinet Mountains of western Montana. U.S. Forest Service Contract 242-46, Kootenai National Forest.
- Hayne, D. W. 1959. Calculation of size of home range. *Journal of Mammalogy* 30:1-18.
- Heisey, D. M. and K. T. Fuller. 1985. Evaluation of survival and cause-specific mortality rates using telemetry data. *Journal of Wildlife Management* 49:668-674.
- Hellgren, E. C., D. W. Carney, N. P. Garner, and M. R. Vaughn. 1988. Use of breakaway cotton splicers on radio collars. *Wildlife Society Bulletin* 16:216-218.

- Hovey, F. W. and B. N. McLellan. 1996. Estimating population growth of grizzly bears from the Flathead River drainage using computer simulations of reproductive and survival rates. *Canadian Journal of Zoology* 74:1409-1416.
- Johnson, K. G. and M. R. Pelton. 1980. Prebaiting and snaring techniques for black bears. *Wildlife Society Bulletin* 8:46-54.
- Jonkel, J. J. 1993. A manual for handling bears for managers and researchers. Edited by T.J. Thier, U.S. Fish and Wildlife Service, Missoula, Montana.
- Kasworm, W. F. and T. Manley. 1988. Grizzly bear and black bear ecology in the Cabinet Mountains of northwest Montana. Montana Department of Fish, Wildlife, and Parks, Helena.
- Kasworm, W. F. and T. J. Thier. 1993. Cabinet-Yaak ecosystem grizzly bear and black bear research, 1992 progress report. U.S. Fish and Wildlife Service, Missoula, Montana.
- Kasworm, W. F., T. J. Thier, and C. Servheen. 1998. Grizzly bear recovery efforts in the Cabinet/Yaak ecosystem. *Ursus* 10:147-153.
- Kendall, K. C. 1986. Grizzly and black bear feeding ecology in Glacier National Park, Montana. Glacier National Park.
- Mace, R. D. and J. S. Waller. 1998. Demography and population trend of grizzly bears in the Swan Mountains, Montana. *Conservation Biology* 12:1005-1016.
- Servheen, C., W. Kasworm, and A. Christensen. 1987. Approaches to augmenting grizzly bear populations in the Cabinet Mountains of Montana. *International Conference on Bear Research and Management* 7:363-367.
- Stoneberg, R. and C. Jonkel. 1966. Age determination in black bears by cementum layers. *Journal of Wildlife Management* 30:411-414.
- Thier, T. J. 1981. Cabinet Mountains grizzly bear studies, 1979-1980. Border Grizzly Project Special Report 50. University of Montana, Missoula.
- Thier, T. J. 1990. Population characteristics and the effects of hunting on black bears in a portion of northwestern Montana. M.S. Thesis. University of Montana, Missoula.
- U.S. Fish and Wildlife Service. 1990. Final environmental assessment - grizzly bear population augmentation test, Cabinet-Yaak ecosystem. U.S. Fish and Wildlife Service, Missoula, Montana.
- U.S. Fish and Wildlife Service. 1993. Grizzly bear recovery plan. U.S. Fish and Wildlife Service, Missoula, Montana.

U.S. Forest Service, Idaho Department of Fish and Game, Washington Department of Wildlife, U.S. Fish and Wildlife Service, and Montana Department of Fish, Wildlife, and Parks. 1988. Cumulative effects analysis process for the Selkirk/Cabinet-Yaak grizzly bear ecosystems.

U.S. Forest Service. 1989. Upper Yaak draft environmental impact statement. U.S. Forest Service, Kootenai National Forest.

Worton, B. J. 1989. Kernel methods for estimating the utilization distribution in home-range studies. *Ecology* 70:164-168.

Other Publications or Reports Involving this Research Program

Kasworm, W. F. and T. L. Manley. 1988. Grizzly bear and black bear ecology in the Cabinet Mountains of Northwest Montana. Montana Department Fish, Wildlife, Parks, Helena.

Kasworm, W. F. 1989. Telling the difference. *Wyoming Wildlife*. Volume 53, No. 8, pages 28-33.

Kasworm, W. F. and T. L. Manley. 1990. Influences of roads and trails on grizzly bears and black bears in Northwest Montana. *International Conference on Bear Research and Management* 8:79-84.

Kasworm, W. F. and T. J. Thier. 1994. Adult black bear reproduction, survival, and mortality sources in northwest Montana. *International Conference on Bear Research and Management* 9:223-230.

Kasworm, W. F., T. J. Thier, and C. Servheen. 1998. Grizzly bear recovery efforts in the Cabinet-Yaak ecosystem. *Ursus* 10:147-153.

Knick, S. T. and W. Kasworm. 1989. Shooting mortality in small populations of grizzly bears. *Wildlife Society Bulletin* 17:11-15.

McLellan, B. N., F. W. Hovey, R. D. Mace, J. G. Woods, D. W. Carney, M. L. Gibeau, W. L. Wakkinen, and W. F. Kasworm. 1999. Rates and causes of grizzly bear mortality in the interior mountains of British Columbia, Alberta, Montana, Washington, and Idaho. *Journal of Wildlife Management* 63:911-920.

Schwartz, C. C., K. A. Keating, H. V. Reynolds, V. G. Barnes, R. A. Sellers, J. E. Swenson, S. D. Miller, B. N. McLellan, J. Keay, R. McCann, M. Gibeau, W. L. Wakkinen, R. D. Mace, W. F. Kasworm, R. Smith and S. Herrero. In Press. Reproductive senescence in the brown/grizzly bear. *Ursus*.

Servheen, C., W. Kasworm, and A. Christensen. 1987. Approaches to augmenting grizzly bear populations in the Cabinet Mountains of Montana. *International Conference on Bear Research and Management* 7:363-367.

- Servheen, C., W. F. Kasworm, and T. J. Thier. 1995. Transplanting grizzly bears *Ursus arctos horribilis* as a management tool - results from the Cabinet Mountains, Montana, USA. *Conservation Biology* 71:261-268.
- Swensen, J. E., W. F. Kasworm, S. T. Stewart, C. A. Simmons, and K. Aune. 1987. Intersubpopulation applicability of equations to predict live weight in black bears. *International Conference on Bear Research and Management* 7:359-362.
- Thier, T. J. and W. F. Kasworm. 1992. Recovery of a Grizzly Bear From a Serious Gunshot Wound. *The Montana Game Warden* 4(1):24-25.
- Wakkinen, W. L. and W. F. Kasworm. 1997. Grizzly bear and road density relationships in the Selkirk and Cabinet-Yaak recovery zones. U.S. Fish and Wildlife Service, Missoula, Montana.

Appendix 1. Necropsy report on grizzly bear 577.



Montana Fish, Wildlife & Parks

Wildlife Research Laboratory

Report of Laboratory Examination

Date Received: 7/8/02 Lab Number: 183501

From: Clayton Miller

Address: MFWP, 490 North Meridian Rd., Kalispell, MT 59901

How Delivered: MFWP Personnel.

SAMPLES SUBMITTED: The entire carcass of a cub grizzly.

Examination Desired: Determine cause of death.

LABORATORY FINDINGS:

The entire carcass of a female grizzly cub was delivered to the MFWP Wildlife Research Laboratory for examination. The carcass was assigned Laboratory accession number 183501 upon arrival. The bear weighed 58.5 pounds and was in poor postmortem condition.

Examination of the carcass revealed severe trauma to the hind legs and pelvic region of the bear. Bite marks were not observed in the area of the trauma. Subcutaneous hematoma was apparent on the left side of the rib cage. Canine bite marks were present but a distinct pair could not be identified.

The cub was considered to be in poor physiologic condition at the time of its death. The trauma to the back legs and pelvic region of the bear was consistent with blunt force trauma (possibly from a vehicular collision) and, compounded by the poor condition of the bear, likely resulted in its death (blood loss and tissue damage). The wound to the left side of the chest was the result of an attack by another predator. This wound was neither severe nor considered to be life threatening. The timing of occurrence of the wounds could not be determined.

Analysis By: Neil Anderson

Date: 9/17/02

Appendix 2. Description of Habitat Components.

1. Closed Timber - Timber stands with tree cover greater than 60%, and a variable but often sparse understory.
2. Open Timber - Timbered sites with tree canopy cover of from 30 to 60%, and a sparse grass - forb understory. Commonly found on dry exposures, limiting undergrowth to a few rhizomatous species.
3. Timbered Shrubfield - Open timbered sites with tree cover of 30 to 60%, and a shrub dominated understory. Except for more xeric aspects, the shrub layer is well developed, and the forb layer is characteristically sparse due to limited light penetration.
4. Mixed Shrub/Snowchute - Shrub dominated communities resulting from, and often maintained by sudden snowslides on steep timbered drainages. They exist as narrow, linear openings in the forest canopy, or as extensive, broad chutes covering an entire slope.
5. Mixed Shrub/Cutting Unit - Open sites which have been harvested and are currently dominated by shrubs. Structure and composition is variable depending on harvest method, site treatment, habitat type, topographic position and time since harvest.
6. Mixed Shrub/Burn - Open sites, dominated by shrubs, that have developed following fire. Structure and composition is dependent on fire intensity, habitat type, topographic position and time since burn.
7. Alder Shrub - Tall shrub community dominated by alder (*Alnus sinuata*), almost to the exclusion of all other shrub species, with a herbaceous understory. Component can develop as a result of disturbance, but is often restricted to mesic sites.
8. Huckleberry Shrub - Seral shrubfields dominated by *Vaccinium* species. This open, low structured shrubfield is created and at times maintained by fire. Timber harvest and snowslides may have the same developmental effect.
9. Riparian Stream bottom - Stream bottom habitat is identified by riparian plant associations, which reflect the influence of increased soil moisture. Considerable variation in vegetation composition and structure exist, with some site being open and some timbered. The development and extent of riparian habitat is dependent on timber canopy and stream channel gradient.
10. Marsh - Open sedge dominated communities that are perennially moist, often containing standing water. Can exist as either unbroken monotypic communities or as infringing zones around open shallow lakes and ponds.
11. Wet Meadow - Mesic graminoid dominated communities along flat low elevation watersheds, and in slightly concave depressions at high elevations. Floristic composition varies between and within open meadows depending on slight differences in soil moisture.

12. Dry Meadow - Open graminoid dominated sites with level or gradual sloping topography, most commonly occurring at low elevations. Can be created by timber harvest, livestock grazing and fire. Vegetation composition is variable depending on the severity of soil disturbance and topographic position of the site, and unless maintained, most sites reestablish shrub or regenerating conifer canopies.

13. Drainage Forbfield - High elevation herbaceous fields with gradual to steep topography. Forbfields exist where sufficient soils have accumulated and where snowmelt percolating through shallow stony soils provides an endless supply of water through the growing season. Late in phenological development, a number of forbs continue to grow and flower into September and October.

14. Snowchute - Open, forb dominated snowchutes are the result of recent massive snowslides that remove both tree and shrub cover. Snowchutes in early successional herbaceous stages are uncommon, and occupy a site for a few years prior to shrub development.

15. Graminoid Sidehill Park - Graminoid dominated communities on moderate to steep slopes with convex topography, from mid to high elevations. Local topographic, edaphic and climatic influences combine to limit tree growth.

16. Beargrass Sidehill Park - Beargrass (*Xerophyllum tenex*) dominated communities on moderate to steep slopes with convex topography, from mid to high elevations. Generally located on shallow, well drained soils of south to west aspects. They exist as large homogenous openings along upper slopes and ridges, and small patches on basin headwalls.

17. Slabrock - Open sites of exposed blocks of scoured - glaciated bedrock, occurring at high elevations on steep to gentle topography.

18. Talus/Rock/Scree - Very steep to moderate slopes and benches of loose rock fragments of variable size, with very sparse vegetation.

19. Timbered Grass - Open timbered sites with 30 to 60% tree canopy coverage and a graminoid dominated understory. Generally occur on well-drained soils, with gentle to steep slopes with south to west aspects.