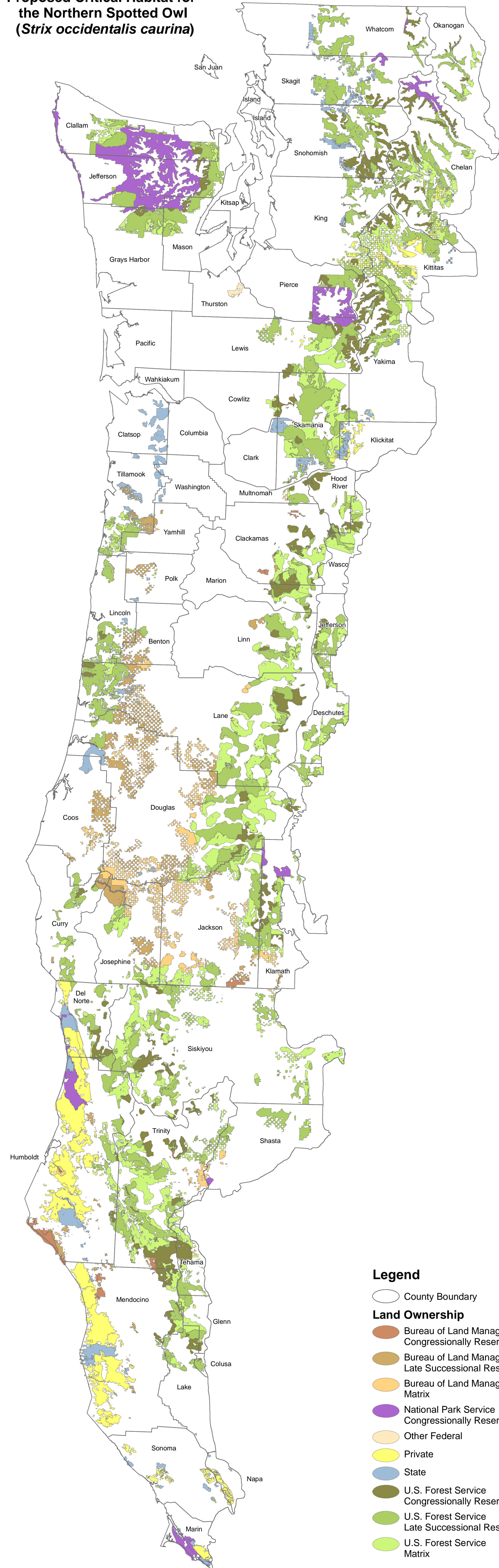


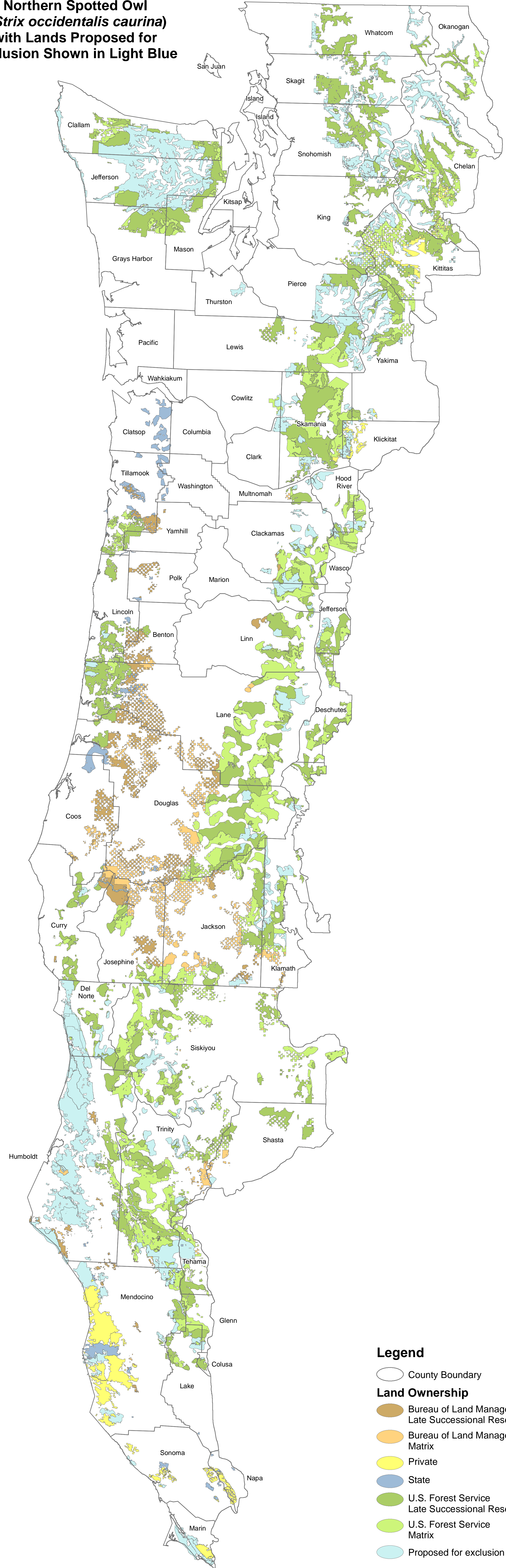
**Proposed Critical Habitat for the Northern Spotted Owl (*Strix occidentalis caurina*)**



**Legend**

- County Boundary
- Land Ownership**
- Bureau of Land Management Congressionally Reserved Lands
- Bureau of Land Management Late Successional Reserve
- Bureau of Land Management Matrix
- National Park Service Congressionally Reserved Lands
- Other Federal
- Private
- State
- U.S. Forest Service Congressionally Reserved Lands
- U.S. Forest Service Late Successional Reserve
- U.S. Forest Service Matrix

**Proposed Critical Habitat for Northern Spotted Owl (*Strix occidentalis caurina*) with Lands Proposed for Exclusion Shown in Light Blue**

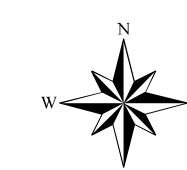
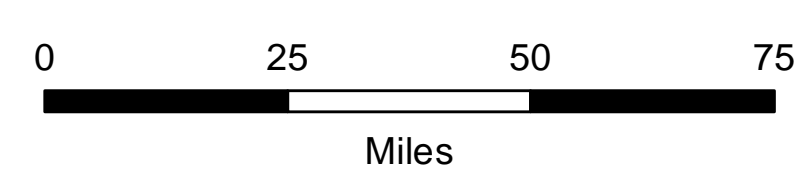


**Legend**

- County Boundary
- Land Ownership**
- Bureau of Land Management Late Successional Reserve
- Bureau of Land Management Matrix
- Private
- State
- U.S. Forest Service Late Successional Reserve
- U.S. Forest Service Matrix
- Proposed for exclusion



No warranty is made by the U.S. Fish and Wildlife Service as to the accuracy, reliability, or completeness of these data for individual or aggregate use with other data. Original data were compiled from various sources. Spatial information may not meet National Map Accuracy Standards. This information may be updated without notification.



February 27, 2012  
Oregon Fish and Wildlife Office

