



U. S. Department  
of Transportation

**Federal Highway  
Administration**

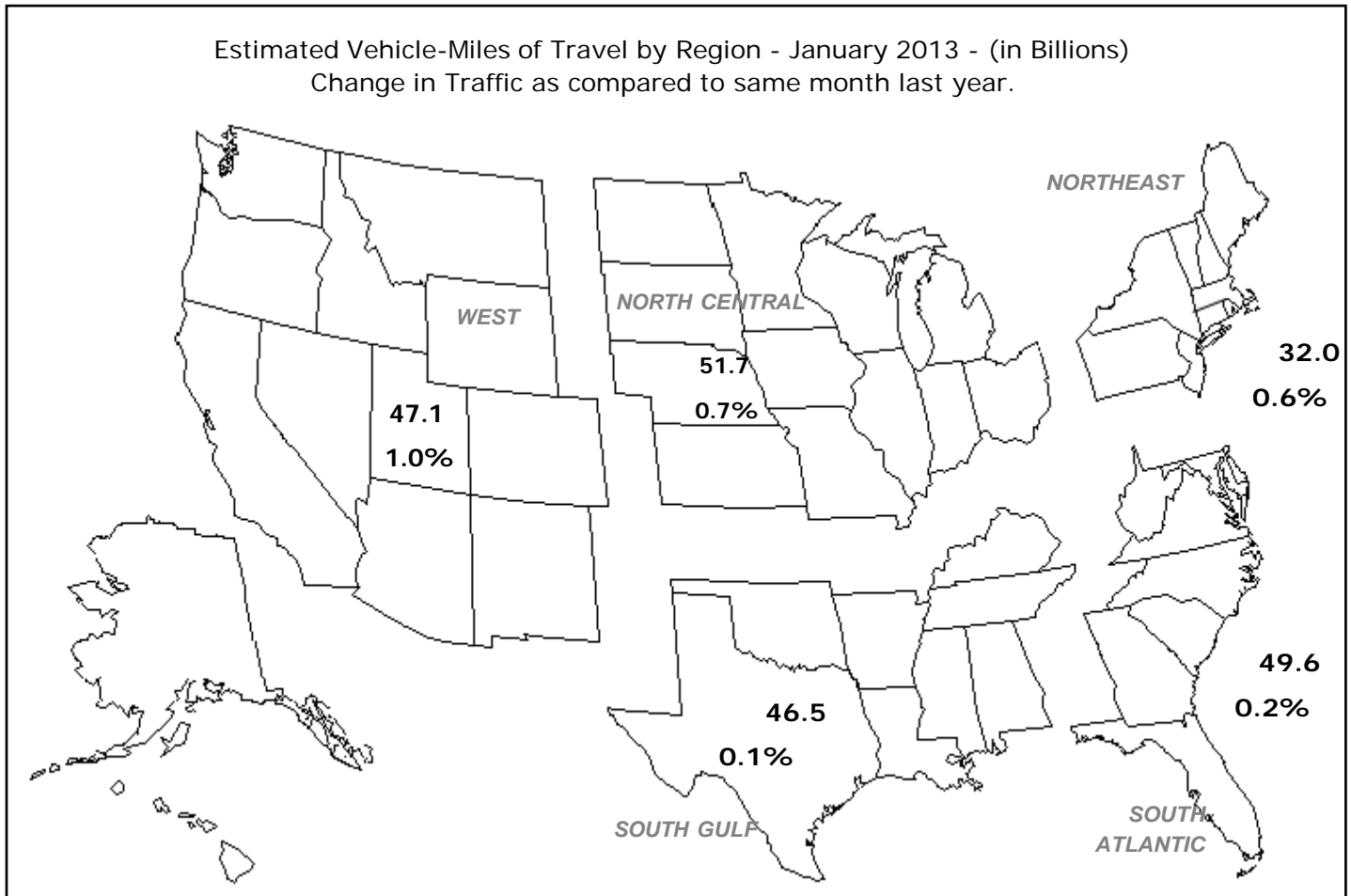
Office of Highway  
Policy Information

# TRAFFIC VOLUME TRENDS

## January 2013

Travel on all roads and streets changed by **+0.5%** (1.2 billion vehicle miles) for January 2013 as compared with January 2012. Travel for the month is estimated to be 226.9 billion vehicle miles.

Cumulative Travel for 2013 changed by **+0.5%** (1.2 billion vehicle miles). The Cumulative estimate for the year is 226.9 billion vehicle miles of travel.



Note: All data for this month are preliminary. Revised values for the previous month are shown in Tables 1 and 2  
All vehicle-miles of travel computed with Highway Statistics 2011 Table VM-2 as a base.

Compiled with data on hand as of March 14, 2013.

Some historical data were revised based on HPMS and amended TVT data as of December 2011.

For information on total licensed drivers in the U.S., visit <http://www.fhwa.dot.gov/policy/ohpi/hss/hsspubs.htm>.

Select the year of interest then Section III (Driver Licensing).

For information on total registered motor vehicles in the U.S., visit <http://www.fhwa.dot.gov/policy/ohpi/hss/hsspubs.htm>

Select the year of interest and Section II (Motor Vehicles).

Based on preliminary reports from the State Highway Agencies, travel during January 2013 on all roads and streets in the nation changed by **+0.5** percent (1.2 billion vehicle miles) resulting in estimated travel for the month at **226.9\*\*** billion vehicle-miles.

This total includes **71.6** billion vehicle-miles on rural roads and **155.3** billion vehicle-miles on urban roads and streets.

Cumulative Travel changed by **+0.5** percent (1.2 billion vehicle miles).

The larger changes to rural and urban travel are primarily because of the expansion in urban boundaries reflected in the 2000 census. Travel estimates for 2004 and beyond will also reflect this adjustment.

Travel for the current month, the cumulative yearly total, as well as the moving 12-month total on all roads and streets is shown below. Similar totals for each year since 1988 are also included.

Travel in Millions of Vehicle Miles

All Roads and Streets

Year	January	Year to Date	Moving 12-Month
1988	148,879	148,879	1,933,289
1989	159,750	159,750	2,036,457
1990	163,600	163,600	2,110,889
1991	157,889	157,889	2,141,790
1992	167,652	167,652	2,181,977
1993	171,680	171,680	2,251,180
1994	169,314	169,314	2,294,338
1995	193,838	193,838	2,382,111
1996	183,465	183,465	2,412,403
1997	190,126	190,126	2,488,862
1998	196,870	196,870	2,567,117
1999	193,581	193,581	2,622,074
2000	203,442	203,442	2,689,319
2001	209,685	209,685	2,753,170
2002	215,215	215,215	2,801,140
2003	218,534	218,534	2,858,829
2004	222,450	222,450	2,894,137
2005	224,072	224,072	2,966,412
2006	233,302	233,302	2,998,660
2007	233,799	233,799	3,014,868
2008	233,469	233,469	3,030,794
2009	224,840	224,840	2,967,899
2010	220,177	220,177	2,952,099
2011	222,724	222,724	2,969,510
2012	225,714	225,714	2,948,804
2013	226,925	226,925	2,955,584

Traffic Volume Trends is a monthly report based on hourly traffic count data. These data, collected at approximately 4,000 continuous traffic counting locations nationwide, are used to determine the percent change in traffic for the current month compared to the same month in the previous year. This percent change is applied to the travel for the same month of the previous year to obtain an estimate of travel for the current month. Because of the limited sample sizes, caution should be used with these estimates. The Highway Performance Monitoring System provides more accurate information on an annual basis.

\*\* System entries may not add to give "All Systems" total due to rounding for Page 2 to 8.

**Table - 1. Estimated Individual Monthly Motor Vehicle Travel in the United States\*\***

System	Month											
	JAN	FEB	MAR	APR	MAY	JUN	JUL	AUG	SEP	OCT	NOV	DEC
2012 Individual Monthly Vehicle-Miles of Travel in Billions												
Rural Interstate	17.7	17.0	20.2	20.5	21.7	22.0	23.1	23.0	19.7	20.6	20.0	19.6
Rural Other Arterial	27.2	26.6	31.3	30.7	33.2	33.5	34.9	34.7	31.1	32.4	30.3	29.0
Other Rural	26.6	25.5	30.5	30.1	32.0	32.2	32.6	32.7	29.4	31.0	28.2	27.1
Urban Interstate	36.9	35.6	40.9	40.2	42.4	42.7	40.5	42.3	39.1	40.7	39.6	39.3
Urban Other Arterial	81.8	78.8	90.7	88.3	90.8	89.6	89.5	91.9	83.3	90.2	85.1	85.2
Other Urban	35.5	34.2	38.9	38.5	39.8	39.0	38.8	38.9	35.5	38.0	36.6	37.5
All Systems	225.7	217.7	252.5	248.3	259.9	259.0	259.4	263.6	238.0	252.9	239.8	237.6
2013 Individual Monthly Vehicle-Miles of Travel in Billions												
Rural Interstate	17.9											
Rural Other Arterial	27.2											
Other Rural	26.5											
Urban Interstate	37.4											
Urban Other Arterial	82.2											
Other Urban	35.6											
All Systems	226.9											
* Percent Change In Individual Monthly Travel 2012 vs. 2013												
Rural Interstate	1.2											
Rural Other Arterial	-0.1											
Other Rural	-0.3											
Urban Interstate	1.4											
Urban Other Arterial	0.5											
Other Urban	0.4											
All Systems	0.5											

**Table - 2. Estimated Cumulative Monthly Motor Vehicle Travel in the United States\*\***

System	Month											
	JAN	FEB	MAR	APR	MAY	JUN	JUL	AUG	SEP	OCT	NOV	DEC
2012 Cumulative Monthly Vehicle-Miles of Travel in Billions												
Rural Interstate	17.7	34.7	54.8	75.3	97.0	119.1	142.2	165.2	184.9	205.6	225.5	245.2
Rural Other Arterial	27.2	53.8	85.1	115.8	148.9	182.4	217.3	252.0	283.1	315.4	345.7	374.6
Other Rural	26.6	52.0	82.6	112.6	144.6	176.8	209.4	242.2	271.5	302.5	330.7	357.8
Urban Interstate	36.9	72.5	113.4	153.6	196.0	238.7	279.2	321.5	360.6	401.3	440.9	480.2
Urban Other Arterial	81.8	160.6	251.3	339.6	430.4	520.1	609.5	701.5	784.7	874.9	960.0	1045.2
Other Urban	35.5	69.7	108.6	147.2	187.0	226.0	264.9	303.7	339.3	377.3	413.9	451.4
All Systems	225.7	443.4	695.9	944.2	1204.1	1463.1	1722.5	1986.1	2224.1	2477.0	2716.8	2954.4
2013 Cumulative Monthly Vehicle-Miles of Travel in Billions												
Rural Interstate	17.9											
Rural Other Arterial	27.2											
Other Rural	26.5											
Urban Interstate	37.4											
Urban Other Arterial	82.2											
Other Urban	35.6											
All Systems	226.9											
* Percent Change In Cumulative Monthly Travel 2012 vs. 2013												
Rural Interstate	1.2											
Rural Other Arterial	-0.1											
Other Rural	-0.3											
Urban Interstate	1.4											
Urban Other Arterial	0.5											
Other Urban	0.4											
All Systems	0.5											

\*Percent change is based on vehicle travel in millions of miles.

Table - 3. Changes on Rural Arterial Roads by Region and State\*\*

Region and State	January				December			
	Number of Stations	Vehicle-Miles (Millions)		Percent Change	Number of Stations	Vehicle-Miles (Millions)		Percent Change
		2013 (Preliminary)	2012			2012 (Revised)	2011	
<b>Northeast</b>								
Connecticut	5	147	148	-0.9	5	154	160	-3.7
Maine	30	428	423	1.3	44	426	453	-5.9
Massachusetts	6	180	179	0.7	9	216	238	-9.1
New Hampshire	16	251	247	1.5	22	257	270	-4.8
New Jersey	-	285	285	0.0	-	318	334	-4.9
New York	50	994	998	-0.3	50	1,173	1,243	-5.7
Pennsylvania	36	1,586	1,576	0.6	35	1,801	1,892	-4.8
Rhode Island	-	29	29	0.6	-	47	49	-3.8
Vermont	41	224	222	1.0	31	214	228	-5.9
Subtotal		<b>4,124</b>	<b>4,107</b>	<b>0.4</b>		<b>4,606</b>	<b>4,867</b>	<b>-5.4</b>
<b>South Atlantic</b>								
Delaware	27	102	101	1.0	25	105	107	-1.2
District of Columbia	-	0	0	0.0	-	0	0	0.0
Florida	96	1,948	1,922	1.3	94	1,855	1,887	-1.7
Georgia	76	1,821	1,796	1.4	76	1,810	1,809	0.1
Maryland	25	621	626	-0.9	26	691	726	-4.8
North Carolina	15	1,488	1,501	-0.9	15	1,583	1,620	-2.3
South Carolina	70	1,210	1,193	1.4	69	1,221	1,240	-1.5
Virginia	261	1,496	1,514	-1.2	258	1,637	1,681	-2.7
West Virginia	15	458	459	-0.2	17	516	537	-4.0
Subtotal		<b>9,144</b>	<b>9,112</b>	<b>0.4</b>		<b>9,418</b>	<b>9,607</b>	<b>-2.0</b>
<b>North Central</b>								
Illinois	16	1,160	1,165	-0.4	8	1,288	1,360	-5.3
Indiana	26	1,289	1,282	0.5	29	1,131	1,191	-5.0
Iowa Kansas	90	937	933	0.3	90	993	1,034	-4.0
Michigan	61	732	754	-3.0	61	805	836	-3.7
Minnesota	63	1,387	1,374	0.9	63	1,471	1,494	-1.6
Missouri	9	1,144	1,161	-1.5	9	1,280	1,314	-2.6
Nebraska	82	1,103	1,109	-0.5	83	1,347	1,396	-3.5
North Dakota	37	559	561	-0.4	37	635	646	-1.7
Ohio	34	338	337	0.5	31	379	374	1.4
South Dakota	46	1,494	1,442	3.6	47	1,598	1,644	-2.8
Wisconsin	33	306	320	-4.5	35	362	380	-4.7
Subtotal	73	<b>11,718</b>	<b>11,712</b>	<b>0.1</b>		<b>12,786</b>	<b>13,226</b>	<b>-3.3</b>
<b>South Gulf</b>								
Alabama	48	1,234	1,233	0.1	37	1,246	1,283	-2.9
Arkansas	22	854	897	-4.7	9	973	1,001	-2.8
Kentucky	-	1,291	1,286	0.3	18	1,408	1,432	-1.7
Louisiana	14	858	872	-1.6	2	868	818	6.1
Mississippi	31	969	968	0.2	29	928	936	-0.9
Oklahoma	-	924	916	0.8	-	922	917	0.5
Tennessee	26	1,523	1,533	-0.7	22	1,481	1,506	-1.6
Texas	104	4,002	3,904	2.5	108	3,925	3,834	2.4
Subtotal		<b>11,655</b>	<b>11,609</b>	<b>0.4</b>		<b>11,751</b>	<b>11,727</b>	<b>0.2</b>
<b>West</b>								
Alaska	36	80	76	5.3	37	81	81	0.1
Arizona	36	980	997	-1.8	22	1,034	1,038	-0.4
California	41	2,794	2,711	3.1	35	3,911	4,008	-2.4
Colorado	19	806	804	0.3	26	813	826	-1.5
Hawaii	7	87	88	-0.5	8	88	88	0.3
Idaho	102	345	349	-1.3	98	373	380	-1.7
Montana	55	351	345	1.7	53	447	456	-2.0
Nevada	35	260	260	0.0	35	301	319	-5.7
New Mexico	40	693	714	-3.0	37	700	688	1.7
Oregon	105	684	665	2.8	104	768	794	-3.3
Utah	43	382	390	-2.1	44	402	424	-5.1
Washington	80	693	657	5.5	14	766	780	-1.9
Wyoming	73	302	303	-0.3	73	332	337	-1.3
Subtotal		<b>8,457</b>	<b>8,359</b>	<b>1.2</b>		<b>10,016</b>	<b>10,219</b>	<b>-2.0</b>
<b>TOTALS</b>	<b>2,256</b>	<b>45,098</b>	<b>44,899</b>	<b>0.4</b>	<b>2,152</b>	<b>48,577</b>	<b>49,646</b>	<b>-2.2</b>

Note: Where Number of Stations are shown as dashes, the values for the Vehicle-Miles and Percent Change are derived from the estimated VMT based on data from surrounding States or the nationwide average VMT.

Table - 4. Changes on Urban Arterial Roads by Region and State\*\*

Region and State	January				December			
	Number of Stations	Vehicle-Miles (Millions)		Percent Change	Number of Stations	Vehicle-Miles (Millions)		Percent Change
		2013 (Preliminary)	2012			2012 (Revised)	2011	
<b>Northeast</b>								
Connecticut	25	1,731	1,719	0.7	27	1,850	1,916	-3.5
Maine	5	208	211	-1.4	15	199	217	-8.3
Massachusetts	43	3,394	3,318	2.3	47	3,389	3,511	-3.5
New Hampshire	20	447	443	1.0	21	460	479	-3.9
New Jersey	1	3,645	3,646	0.0	1	4,383	4,608	-4.9
New York	76	5,665	5,616	0.9	76	6,098	6,382	-4.5
Pennsylvania	21	3,633	3,609	0.7	21	3,935	4,094	-3.9
Rhode Island	43	343	341	0.6	41	454	472	-3.8
Vermont	16	99	99	0.4	14	94	100	-5.8
Subtotal		<b>19,165</b>	<b>19,002</b>	<b>0.9</b>		<b>20,862</b>	<b>21,779</b>	<b>-4.2</b>
<b>South Atlantic</b>								
Delaware	18	345	342	1.0	16	363	383	-5.2
District of Columbia	-	218	221	-1.5	-	194	202	-4.0
Florida	131	8,850	8,723	1.5	119	8,302	8,383	-1.0
Georgia	114	3,845	3,850	-0.1	114	4,089	4,309	-5.1
Maryland	39	2,752	2,743	0.3	39	2,757	2,847	-3.2
North Carolina	22	3,554	3,590	-1.0	22	3,445	3,552	-3.0
South Carolina	38	1,611	1,605	0.4	37	1,545	1,574	-1.9
Virginia	338	3,169	3,243	-2.3	333	3,305	3,433	-3.7
West Virginia	8	528	508	3.9	10	565	586	-3.5
Subtotal		<b>24,872</b>	<b>24,825</b>	<b>0.2</b>		<b>24,565</b>	<b>25,269</b>	<b>-2.8</b>
<b>North Central</b>								
Illinois	46	4,362	4,328	0.8	19	4,672	4,784	-2.3
Indiana	22	2,615	2,626	-0.4	24	2,602	2,773	-6.2
Iowa Kansas	34	719	721	-0.2	33	722	758	-4.7
Michigan	17	952	964	-1.3	18	1,071	1,105	-3.1
Minnesota	52	4,844	4,758	1.8	53	4,438	4,515	-1.7
Missouri	17	1,929	1,897	1.7	17	1,968	2,051	-4.0
Nebraska	66	2,443	2,416	1.1	65	2,442	2,531	-3.5
North Dakota	14	507	509	-0.4	14	509	520	-2.1
Ohio	8	141	140	0.9	8	153	149	2.9
South Dakota	81	4,282	4,150	3.2	77	4,334	4,450	-2.6
Wisconsin	8	148	151	-2.4	9	170	180	-5.8
Subtotal	51	1,895	1,878	0.9	56	1,721	1,787	-3.7
		<b>24,837</b>	<b>24,538</b>	<b>1.2</b>		<b>24,802</b>	<b>25,603</b>	<b>-3.1</b>
<b>South Gulf</b>								
Alabama	29	1,690	1,679	0.7	30	1,887	1,925	-2.0
Arkansas	7	1,087	1,090	-0.3	-	990	1,018	-2.8
Kentucky	-	1,308	1,300	0.6	9	1,389	1,436	-3.2
Louisiana	14	1,781	1,775	0.4	2	1,698	1,655	2.6
Mississippi	23	873	881	-1.0	23	841	864	-2.7
Oklahoma	-	1,519	1,515	0.3	-	1,584	1,600	-1.0
Tennessee	5	2,653	2,647	0.2	6	2,864	2,878	-0.5
Texas	81	11,273	11,200	0.7	80	10,757	10,817	-0.6
Subtotal		<b>22,184</b>	<b>22,087</b>	<b>0.4</b>		<b>22,010</b>	<b>22,193</b>	<b>-0.8</b>
<b>West</b>								
Alaska	43	123	119	3.2	49	140	140	0.2
Arizona	18	2,783	2,756	1.0	17	2,961	2,954	0.2
California	53	16,200	16,059	0.9	53	19,517	20,511	-4.8
Colorado	13	2,302	2,274	1.2	14	2,178	2,111	3.2
Hawaii	37	423	419	1.0	36	436	439	-0.8
Idaho	77	390	396	-1.5	76	402	406	-1.1
Montana	6	111	109	1.4	6	133	135	-1.5
Nevada	24	959	960	-0.1	25	1,057	1,107	-4.5
New Mexico	32	687	709	-3.2	27	683	676	1.0
Oregon	42	1,127	1,105	2.0	35	1,167	1,199	-2.7
Utah	42	995	1,018	-2.2	41	1,010	1,049	-3.7
Washington	64	2,405	2,249	6.9	17	2,438	2,483	-1.8
Wyoming	29	127	126	0.1	25	126	127	-0.7
Subtotal		<b>28,632</b>	<b>28,299</b>	<b>1.2</b>		<b>32,248</b>	<b>33,337</b>	<b>-3.3</b>
<b>TOTALS</b>	<b>2,013</b>	<b>119,690</b>	<b>118,751</b>	<b>0.8</b>	<b>1,917</b>	<b>124,487</b>	<b>128,181</b>	<b>-2.9</b>

Note: Where Number of Stations are shown as dashes, the values for the Vehicle-Miles and Percent Change are derived from the estimated VMT based on data from surrounding States or the nationwide average VMT.

Table - 5. Changes on ALL\* Estimated Roads by Region and State\*\*

Region and State	January				December			
	Number of Stations	Vehicle-Miles (Millions)		Percent Change	Number of Stations	Vehicle-Miles (Millions)		Percent Change
		2013 (Preliminary)	2012			2012 (Revised)	2011	
<b>Northeast</b>								
Connecticut	31	2,411	2,398	0.5	33	2,574	2,668	-3.5
Maine	49	1,081	1,079	0.3	87	1,067	1,148	-7.1
Massachusetts	49	4,539	4,441	2.2	56	4,611	4,793	-3.8
New Hampshire	40	969	956	1.3	47	1,003	1,048	-4.3
New Jersey	1	5,165	5,166	0.0	1	6,153	6,470	-4.9
New York	139	9,796	9,722	0.8	140	10,483	10,998	-4.7
Pennsylvania	70	6,979	6,981	0.0	70	8,904	9,352	-4.8
Rhode Island	43	432	429	0.6	41	598	622	-3.8
Vermont	72	645	639	0.9	60	521	544	-4.2
Subtotal		<b>32,017</b>	<b>31,811</b>	<b>0.6</b>		<b>35,914</b>	<b>37,643</b>	<b>-4.6</b>
<b>South Atlantic</b>								
Delaware	73	653	649	0.6	65	665	693	-4.0
District of Columbia	-	306	311	-1.5	-	279	290	-3.8
Florida	234	16,530	16,336	1.2	220	15,410	15,858	-2.8
Georgia	229	8,540	8,468	0.8	230	8,690	9,020	-3.7
Maryland	66	4,207	4,194	0.3	67	4,334	4,476	-3.2
North Carolina	59	8,132	8,214	-1.0	58	8,195	8,390	-2.3
South Carolina	115	3,837	3,827	0.3	114	3,780	3,869	-2.3
Virginia	613	6,048	6,167	-1.9	605	6,393	6,608	-3.3
West Virginia	32	1,357	1,334	1.7	36	1,471	1,535	-4.2
Subtotal		<b>49,610</b>	<b>49,500</b>	<b>0.2</b>		<b>49,217</b>	<b>50,739</b>	<b>-3.0</b>
<b>North Central</b>								
Illinois	69	7,412	7,359	0.7	29	7,851	8,100	-3.1
Indiana	62	6,341	6,326	0.2	67	6,127	6,490	-5.6
Iowa	153	2,224	2,249	-1.1	153	2,333	2,451	-4.8
Kansas	88	2,224	2,271	-2.1	89	2,548	2,627	-3.0
Michigan	117	8,071	7,992	1.0	118	7,798	7,946	-1.9
Minnesota	29	4,256	4,234	0.5	29	4,483	4,647	-3.5
Missouri	156	5,238	5,211	0.5	156	5,602	5,784	-3.1
Nebraska	60	1,370	1,378	-0.6	61	1,479	1,506	-1.8
North Dakota	47	682	676	0.9	44	749	729	2.8
Ohio	143	9,231	8,964	3.0	141	9,033	9,366	-3.6
South Dakota	48	582	601	-3.2	50	681	725	-6.0
Wisconsin	129	4,039	4,029	0.3	133	4,100	4,262	-3.8
Subtotal		<b>51,670</b>	<b>51,290</b>	<b>0.7</b>		<b>52,784</b>	<b>54,633</b>	<b>-3.4</b>
<b>South Gulf</b>								
Alabama	79	4,922	4,949	-0.5	70	5,197	5,359	-3.0
Arkansas	31	2,669	2,764	-3.4	9	2,737	2,817	-2.8
Kentucky	-	3,720	3,697	0.6	35	3,902	4,019	-2.9
Louisiana	33	3,630	3,657	-0.8	4	3,573	3,442	3.8
Mississippi	60	2,933	2,950	-0.6	56	2,758	2,817	-2.1
Oklahoma	-	3,658	3,660	0.0	-	3,618	3,633	-0.4
Tennessee	38	5,666	5,671	-0.1	35	5,863	5,929	-1.1
Texas	211	19,306	19,115	1.0	213	18,447	18,394	0.3
Subtotal		<b>46,504</b>	<b>46,463</b>	<b>0.1</b>		<b>46,095</b>	<b>46,410</b>	<b>-0.7</b>
<b>West</b>								
Alaska	84	306	294	4.2	92	328	329	-0.3
Arizona	64	4,866	4,883	-0.3	40	5,219	5,244	-0.5
California	94	22,419	22,154	1.2	88	27,855	29,145	-4.4
Colorado	33	3,894	3,878	0.4	40	3,795	3,725	1.9
Hawaii	46	838	834	0.5	46	848	846	0.2
Idaho	189	1,137	1,157	-1.7	183	1,179	1,199	-1.7
Montana	72	690	683	1.1	69	867	886	-2.1
Nevada	65	1,794	1,798	-0.2	69	1,991	2,090	-4.7
New Mexico	81	2,086	2,150	-3.0	72	2,019	1,992	1.4
Oregon	153	2,402	2,351	2.2	146	2,536	2,615	-3.0
Utah	90	1,963	1,983	-1.0	90	1,989	2,059	-3.4
Washington	147	4,085	3,847	6.2	32	4,271	4,337	-1.5
Wyoming	122	642	640	0.2	114	710	725	-2.0
Subtotal		<b>47,122</b>	<b>46,652</b>	<b>1.0</b>		<b>53,607</b>	<b>55,192</b>	<b>-2.9</b>
<b>TOTALS</b>	<b>4,708</b>	<b>226,925</b>	<b>225,714</b>	<b>0.5</b>	<b>4,503</b>	<b>237,614</b>	<b>244,615</b>	<b>-2.9</b>

Note: Where Number of Stations are shown as dashes, the values for the Vehicle-Miles and Percent Change are derived from the estimated VMT based on data from surrounding States or the nationwide average VMT. \* All Estimated roads include travel from Table 3 and 4 plus remaining roads.

Table - 6. Estimated Rural Vehicle Miles (Millions) and Percent Change from Same Period Previous Year\*\*

Year - 2012														
	Rural Interstate		Rural Other Arterial		Other Rural		Total Rural		All Systems					
		%		%		%		%		%				
Jan	17,710	0.7	Jan	27,190	1.2	Jan	26,561	1.0	Jan	71,461	1.0	Jan	225,714	1.3
Feb	16,969	2.2	Feb	26,597	2.0	Feb	25,467	1.8	Feb	69,033	2.0	Feb	217,656	1.9
Mar	20,165	1.1	Mar	31,293	2.0	Mar	30,541	1.5	Mar	81,999	1.6	Mar	252,535	0.8
Q1	54,843	1.3	Q1	85,080	1.7	Q1	82,569	1.4	Q1	222,493	1.5	Q1	695,904	1.3
Apr	20,487	-0.3	Apr	30,670	0.2	Apr	30,052	-0.5	Apr	81,209	-0.2	Apr	248,261	-0.4
May	21,716	2.4	May	33,158	3.0	May	31,993	2.0	May	86,867	2.5	May	259,888	2.3
Jun	22,027	2.8	Jun	33,483	0.8	Jun	32,214	0.1	Jun	87,723	1.0	Jun	259,042	0.4
Q2	64,230	1.7	Q2	97,311	1.4	Q2	94,259	0.6	Q2	255,799	1.1	Q2	767,191	0.8
1st Half	119,073	1.5	1st Half	182,391	1.6	1st Half	176,828	1.0	1st Half	478,292	1.3	1st Half	1,463,095	1.0
Jul	23,143	-1.0	Jul	34,910	-0.9	Jul	32,616	-1.2	Jul	90,669	-1.0	Jul	259,443	-0.3
Aug	23,018	2.7	Aug	34,713	1.2	Aug	32,725	1.2	Aug	90,456	1.6	Aug	263,601	1.1
Sep	19,687	-2.0	Sep	31,059	-1.9	Sep	29,364	-1.4	Sep	80,110	-1.8	Sep	237,970	-1.6
Q3	65,848	0.0	Q3	100,682	-0.5	Q3	94,704	-0.4	Q3	261,235	-0.4	Q3	761,013	-0.2
Oct	20,638	-0.6	Oct	32,359	-0.6	Oct	31,006	-0.2	Oct	84,003	-0.4	Oct	252,899	0.3
Nov	19,984	1.5	Nov	30,253	1.0	Nov	28,199	0.8	Nov	78,436	1.0	Nov	239,751	0.6
Dec	19,625	-1.5	Dec	28,952	-2.6	Dec	27,071	-3.1	Dec	75,648	-2.5	Dec	237,614	-2.9
Q4	60,247	-0.2	Q4	91,565	-0.7	Q4	86,276	-0.8	Q4	238,088	-0.6	Q4	730,264	-0.6
2nd Half	126,095	-0.1	2nd Half	192,248	-0.6	2nd Half	180,980	-0.6	2nd Half	499,323	-0.5	2nd Half	1,491,277	-0.4
<b>Year</b>	<b>245,168</b>	<b>0.7</b>	<b>Year</b>	<b>374,638</b>	<b>0.4</b>	<b>Year</b>	<b>357,808</b>	<b>0.1</b>	<b>Year</b>	<b>977,615</b>	<b>0.4</b>	<b>Year</b>	<b>2,954,372</b>	<b>0.3</b>

Year - 2013														
	Rural Interstate		Rural Other Arterial		Other Rural		Total Rural		All Systems					
		%		%		%		%		%				
Jan	17,929	1.2	Jan	27,165	-0.1	Jan	26,492	-0.3	Jan	71,587	0.2	Jan	226,925	0.5
Feb			Feb			Feb			Feb			Feb		
Mar			Mar			Mar			Mar			Mar		
Q1	17,929	1.2	Q1	27,165	-0.1	Q1	26,492	-0.3	Q1	71,587	0.2	Q1	226,925	0.5
Apr			Apr			Apr			Apr			Apr		
May			May			May			May			May		
Jun			Jun			Jun			Jun			Jun		
Q2		0.0	Q2		0.0	Q2		0.0	Q2		0.0	Q2		0.0
1st Half	17,929	1.2	1st Half	27,165	-0.1	1st Half	26,492	-0.3	1st Half	71,587	0.2	1st Half	226,925	0.5
Jul			Jul			Jul			Jul			Jul		
Aug			Aug			Aug			Aug			Aug		
Sep			Sep			Sep			Sep			Sep		
Q3		0.0	Q3		0.0	Q3		0.0	Q3		0.0	Q3		0.0
Oct			Oct			Oct			Oct			Oct		
Nov			Nov			Nov			Nov			Nov		
Dec			Dec			Dec			Dec			Dec		
Q4		0.0	Q4		0.0	Q4		0.0	Q4		0.0	Q4		0.0
2nd Half		0.0	2nd Half		0.0	2nd Half		0.0	2nd Half		0.0	2nd Half		0.0
<b>Year</b>	<b>17,929</b>	<b>1.2</b>	<b>Year</b>	<b>27,165</b>	<b>-0.1</b>	<b>Year</b>	<b>26,492</b>	<b>-0.3</b>	<b>Year</b>	<b>71,587</b>	<b>0.2</b>	<b>Year</b>	<b>226,925</b>	<b>0.5</b>

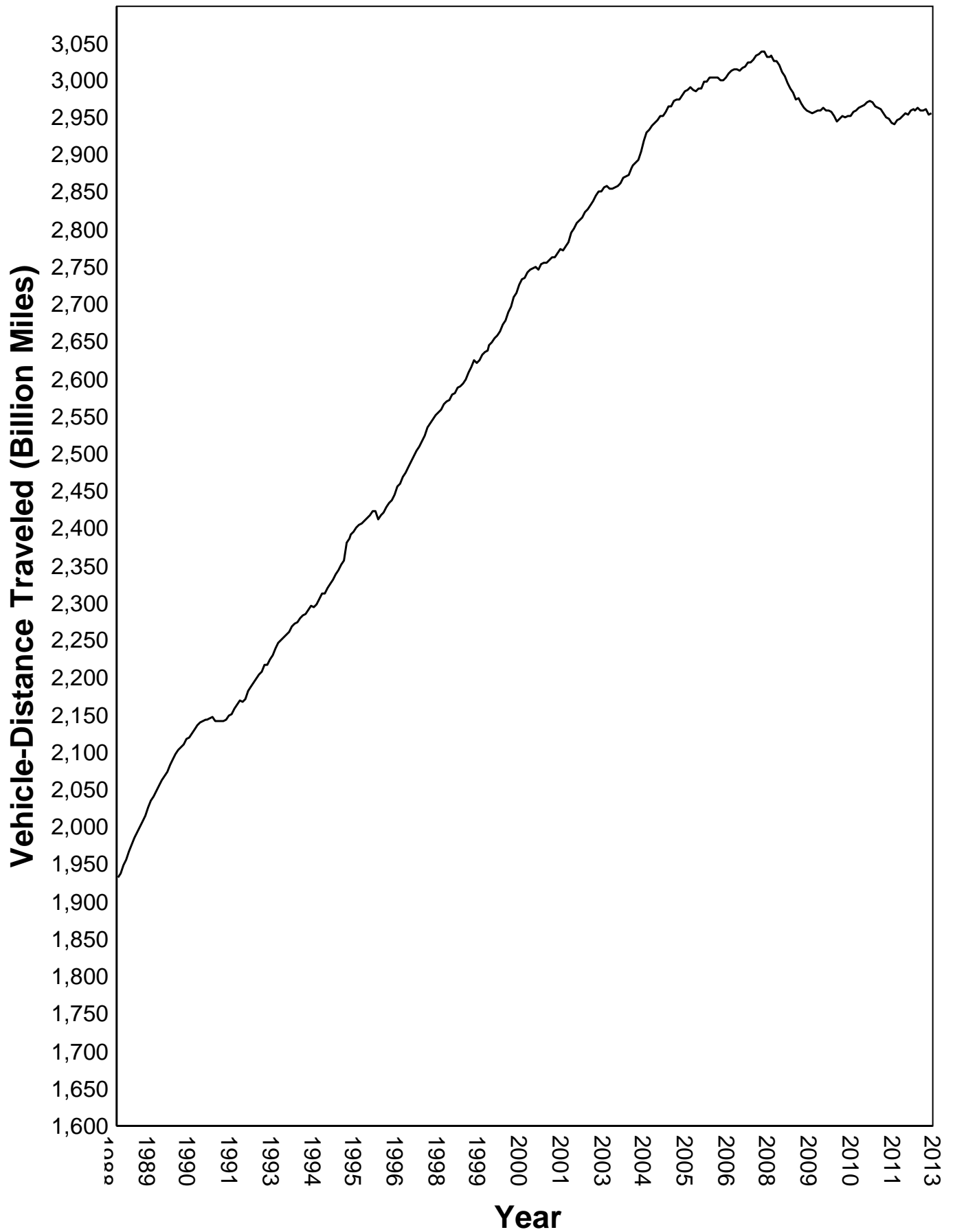
Table - 7. Estimated Urban Vehicle Miles (Millions) and Percent Change from Same Period Previous Year\*\*

Year - 2012														
Urban Interstate %			Urban Other Arterial %			Other Urban %			Total Urban %			All Systems %		
Jan	36,911	2.0	Jan	81,838	1.3	Jan	35,503	1.6	Jan	154,252	1.5	Jan	225,714	1.3
Feb	35,634	3.0	Feb	78,794	1.6	Feb	34,194	1.5	Feb	148,623	1.9	Feb	217,656	1.9
Mar	40,897	0.6	Mar	90,694	0.5	Mar	38,945	0.2	Mar	170,536	0.5	Mar	252,535	0.8
Q1	113,443	1.8	Q1	251,326	1.1	Q1	108,643	1.1	Q1	473,412	1.3	Q1	695,904	1.3
Apr	40,188	0.1	Apr	88,316	-0.6	Apr	38,548	-1.1	Apr	167,053	-0.5	Apr	248,261	-0.4
May	42,400	2.5	May	90,807	2.2	May	39,814	1.7	May	173,020	2.1	May	259,888	2.3
Jun	42,660	0.7	Jun	89,615	-0.1	Jun	39,043	-0.2	Jun	171,319	0.1	Jun	259,042	0.4
Q2	125,249	1.1	Q2	268,738	0.5	Q2	117,405	0.1	Q2	511,392	0.6	Q2	767,191	0.8
1st Half	238,691	1.4	1st Half	520,064	0.8	1st Half	226,048	0.6	1st Half	984,804	0.9	1st Half	1,463,095	1.0
Jul	40,472	0.4	Jul	89,463	0.0	Jul	38,838	-0.3	Jul	168,773	0.0	Jul	259,443	-0.3
Aug	42,347	2.1	Aug	91,947	0.6	Aug	38,852	0.4	Aug	173,145	0.9	Aug	263,601	1.1
Sep	39,091	-1.0	Sep	83,250	-1.5	Sep	35,518	-1.8	Sep	157,860	-1.5	Sep	237,970	-1.6
Q3	121,909	0.5	Q3	264,660	-0.3	Q3	113,209	-0.5	Q3	499,778	-0.1	Q3	761,013	-0.2
Oct	40,692	0.6	Oct	90,206	0.5	Oct	37,998	1.3	Oct	168,896	0.7	Oct	252,899	0.3
Nov	39,583	0.3	Nov	85,088	0.3	Nov	36,643	0.8	Nov	161,314	0.4	Nov	239,751	0.6
Dec	39,286	-2.3	Dec	85,199	-3.2	Dec	37,481	-3.5	Dec	161,966	-3.0	Dec	237,614	-2.9
Q4	119,560	-0.4	Q4	260,493	-0.8	Q4	112,123	-0.5	Q4	492,176	-0.6	Q4	730,264	-0.6
2nd Half	241,470	0.0	2nd Half	525,153	-0.5	2nd Half	225,331	-0.5	2nd Half	991,954	-0.4	2nd Half	1,491,277	-0.4
<b>Year</b>	<b>480,161</b>	<b>0.7</b>	<b>Year</b>	<b>1,045,218</b>	<b>0.1</b>	<b>Year</b>	<b>451,379</b>	<b>0.0</b>	<b>Year</b>	<b>1,976,758</b>	<b>0.2</b>	<b>Year</b>	<b>2,954,372</b>	<b>0.3</b>

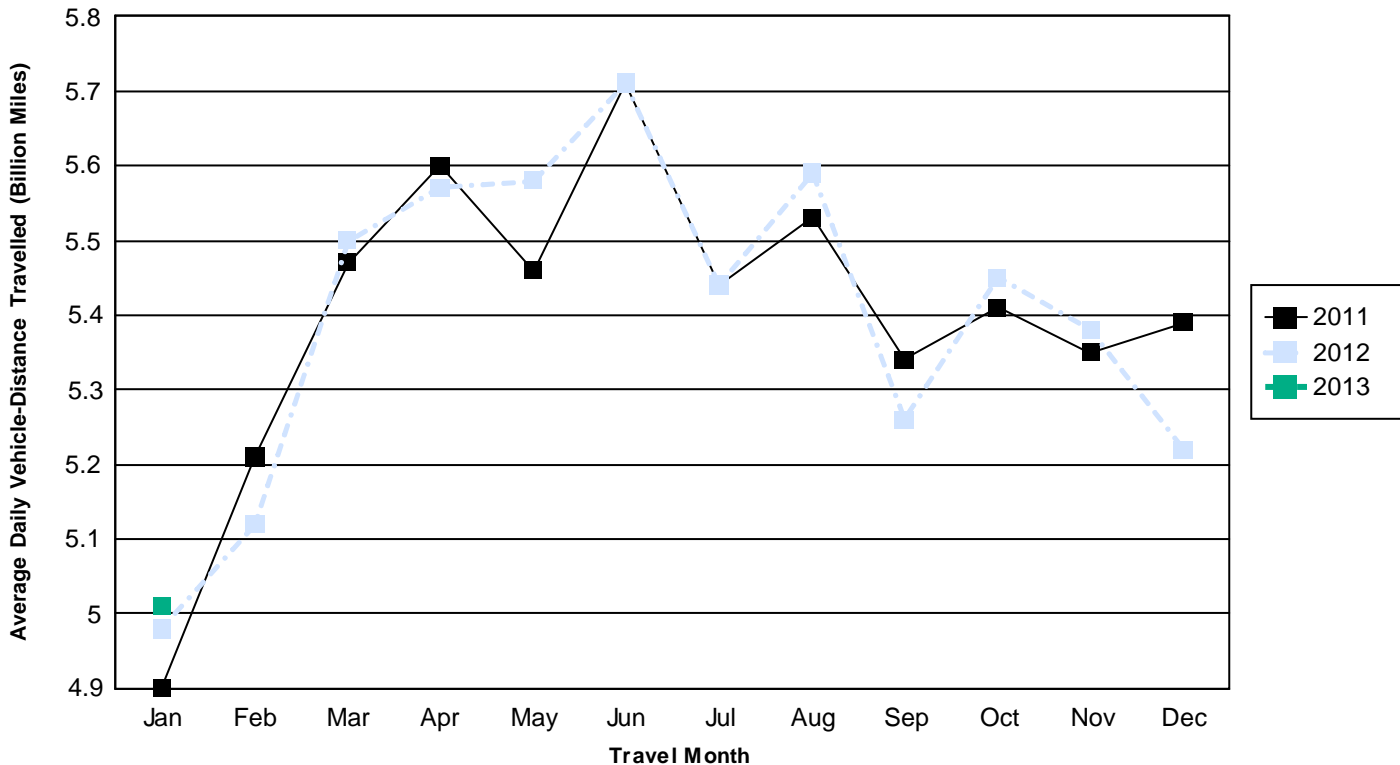
Year - 2013														
Urban Interstate %			Urban Other Arterial %			Other Urban %			Total Urban %			All Systems %		
Jan	37,441	1.4	Jan	82,248	0.5	Jan	35,649	0.4	Jan	155,338	0.7	Jan	226,925	0.5
Feb			Feb			Feb			Feb			Feb		
Mar			Mar			Mar			Mar			Mar		
Q1	37,441	1.4	Q1	82,248	0.5	Q1	35,649	0.4	Q1	155,338	0.7	Q1	226,925	0.5
Apr			Apr			Apr			Apr			Apr		
May			May			May			May			May		
Jun			Jun			Jun			Jun			Jun		
Q2		0.0	Q2		0.0	Q2		0.0	Q2		0.0	Q2		0.0
1st Half	37,441	1.4	1st Half	82,248	0.5	1st Half	35,649	0.4	1st Half	155,338	0.7	1st Half	226,925	0.5
Jul			Jul			Jul			Jul			Jul		
Aug			Aug			Aug			Aug			Aug		
Sep			Sep			Sep			Sep			Sep		
Q3		0.0	Q3		0.0	Q3		0.0	Q3		0.0	Q3		0.0
Oct			Oct			Oct			Oct			Oct		
Nov			Nov			Nov			Nov			Nov		
Dec			Dec			Dec			Dec			Dec		
Q4		0.0	Q4		0.0	Q4		0.0	Q4		0.0	Q4		0.0
2nd Half		0.0	2nd Half		0.0	2nd Half		0.0	2nd Half		0.0	2nd Half		0.0
<b>Year</b>	<b>37,441</b>	<b>1.4</b>	<b>Year</b>	<b>82,248</b>	<b>0.5</b>	<b>Year</b>	<b>35,649</b>	<b>0.4</b>	<b>Year</b>	<b>155,338</b>	<b>0.7</b>	<b>Year</b>	<b>226,925</b>	<b>0.5</b>



Figure - 1. Moving 12-Month Total on ALL Roads



Urban Highways



Rural Highways

