

APPENDIX D
Land Uses in HED GCAs

Notes:

- *Exact land use percentages per each GCA can be found in Tables 1-11 in Appendix E.*
- *Not all land uses within GCAs are represented. In most cases, those with values less than .1% of the total land use and those bearing no visual impacts were removed.*
- *Color coding is not consistent throughout all land use maps. To provide the best layout and clarity for each map the color of less frequently occurring land use categories vary. The most common land uses throughout all GCAs follow the same color scheme.*
- *Land use is extended into the GCA 1000ft buffer.*
- *These maps are intended to identify stakeholders, special interest groups, and outreach opportunities within the HED GCAs.*

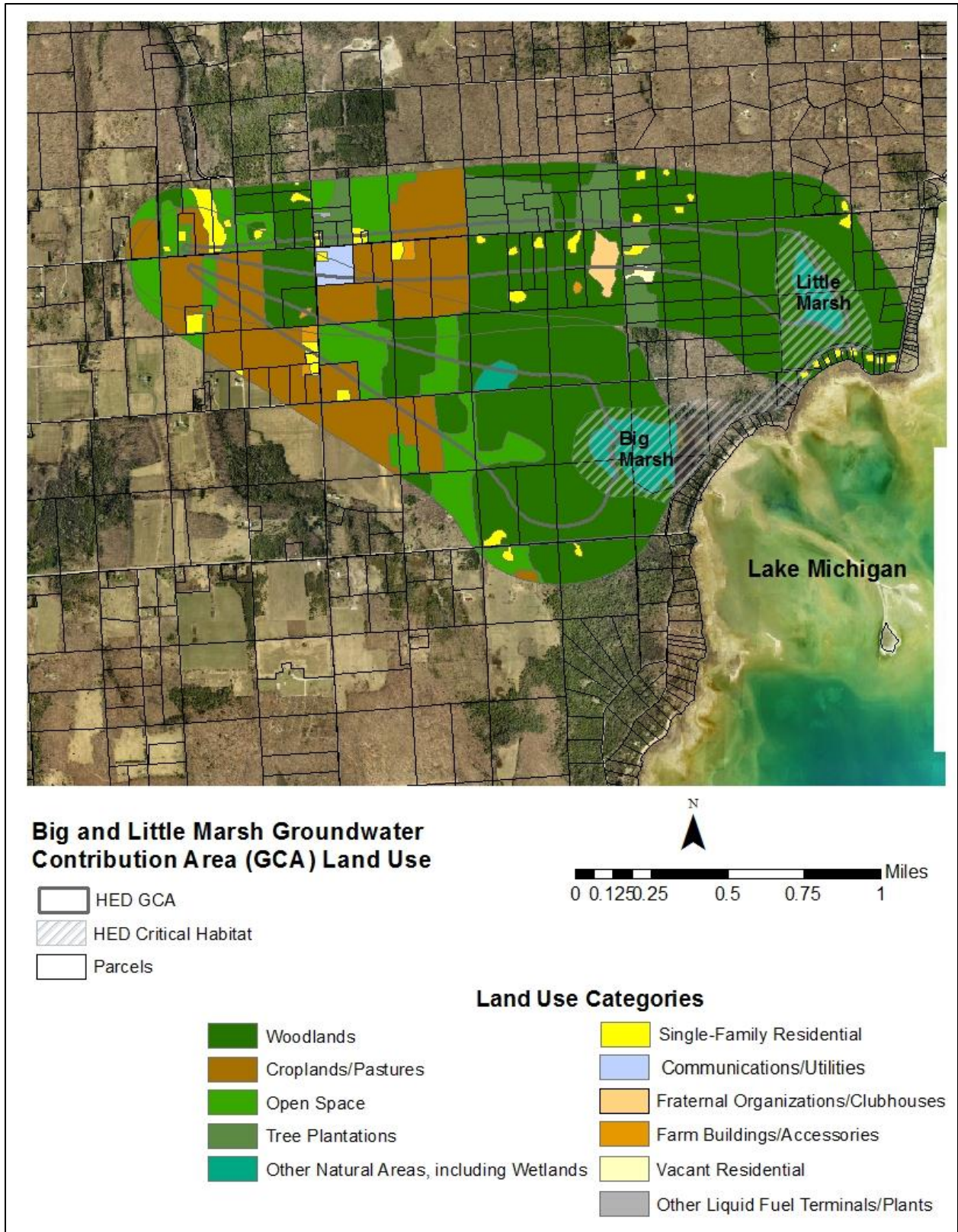


Figure D1. Contributing areas for larval sites on Washington Island

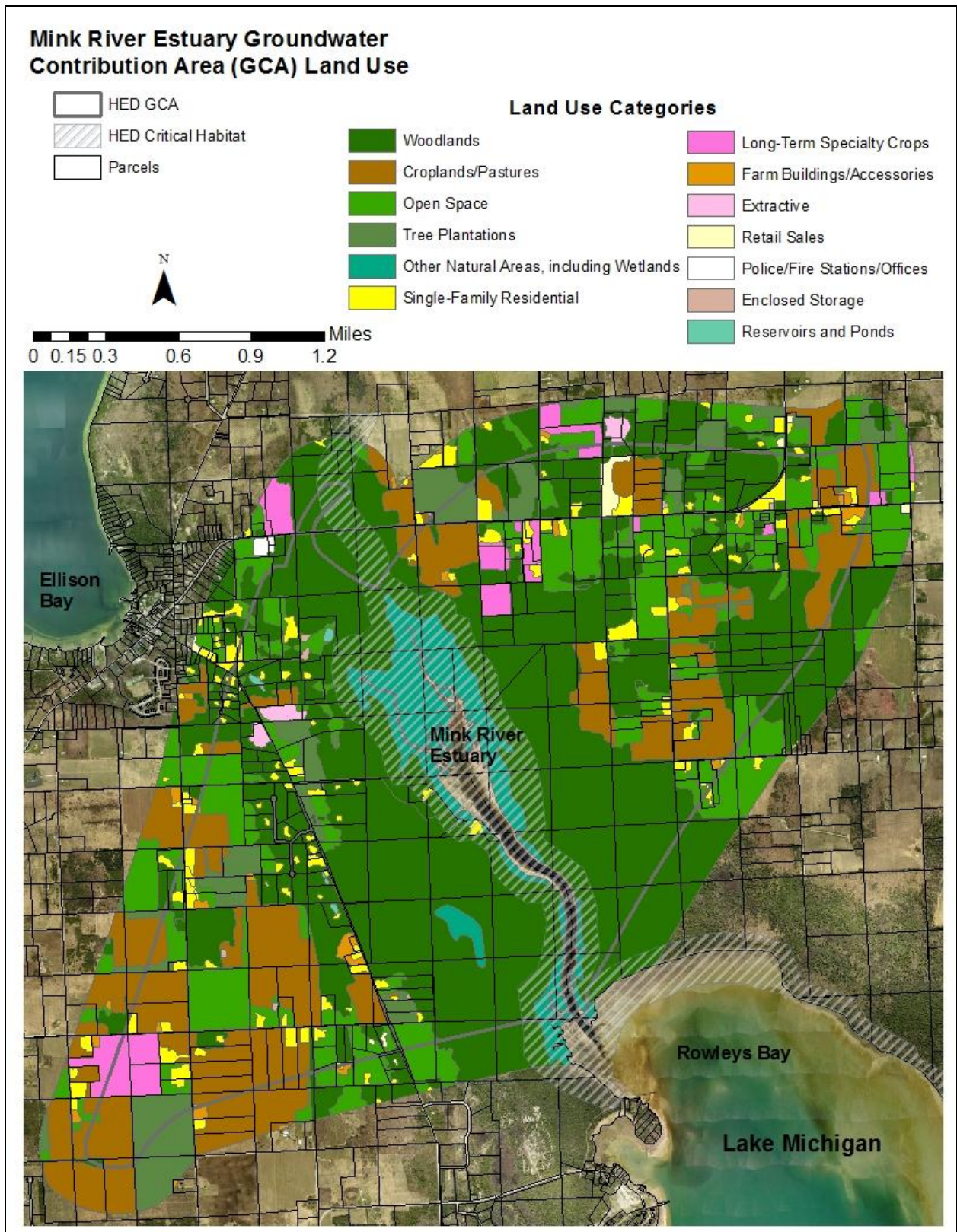


Figure D2. Contributing areas for larval sites along the Mink River

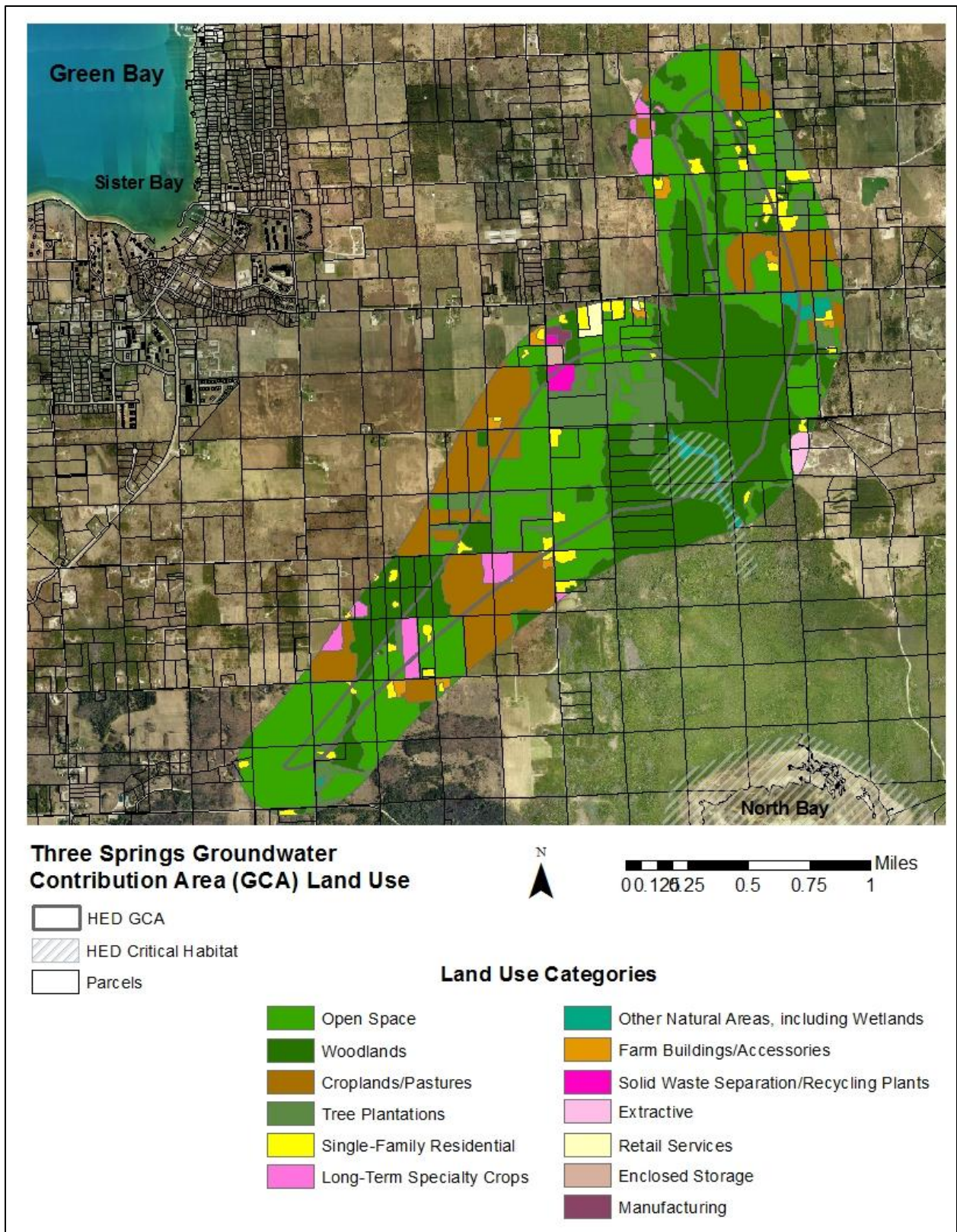


Figure D3. Contributing areas for larval sites along Three Springs Creek

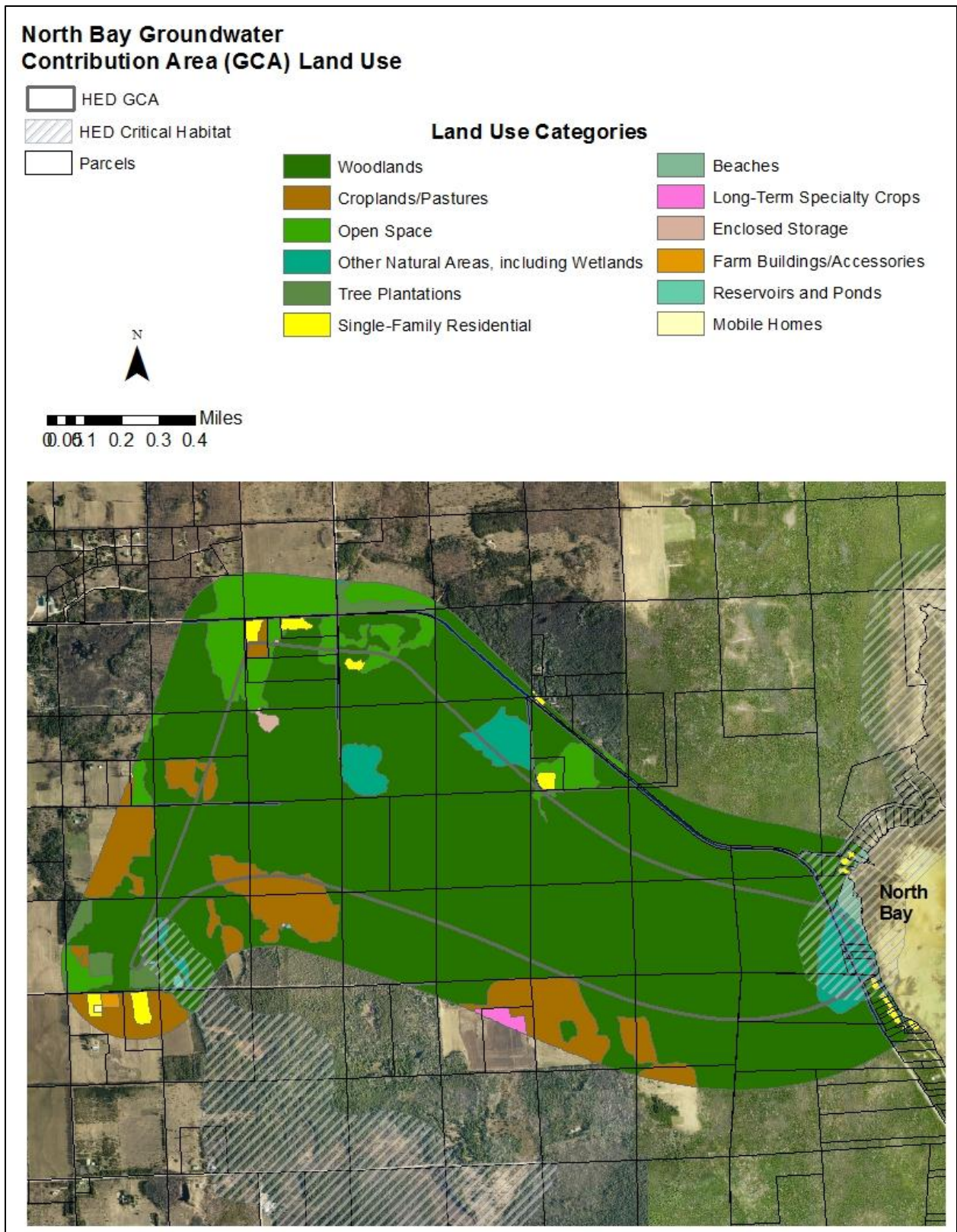


Figure D4. Contributing areas for larval sites near North Bay Marsh

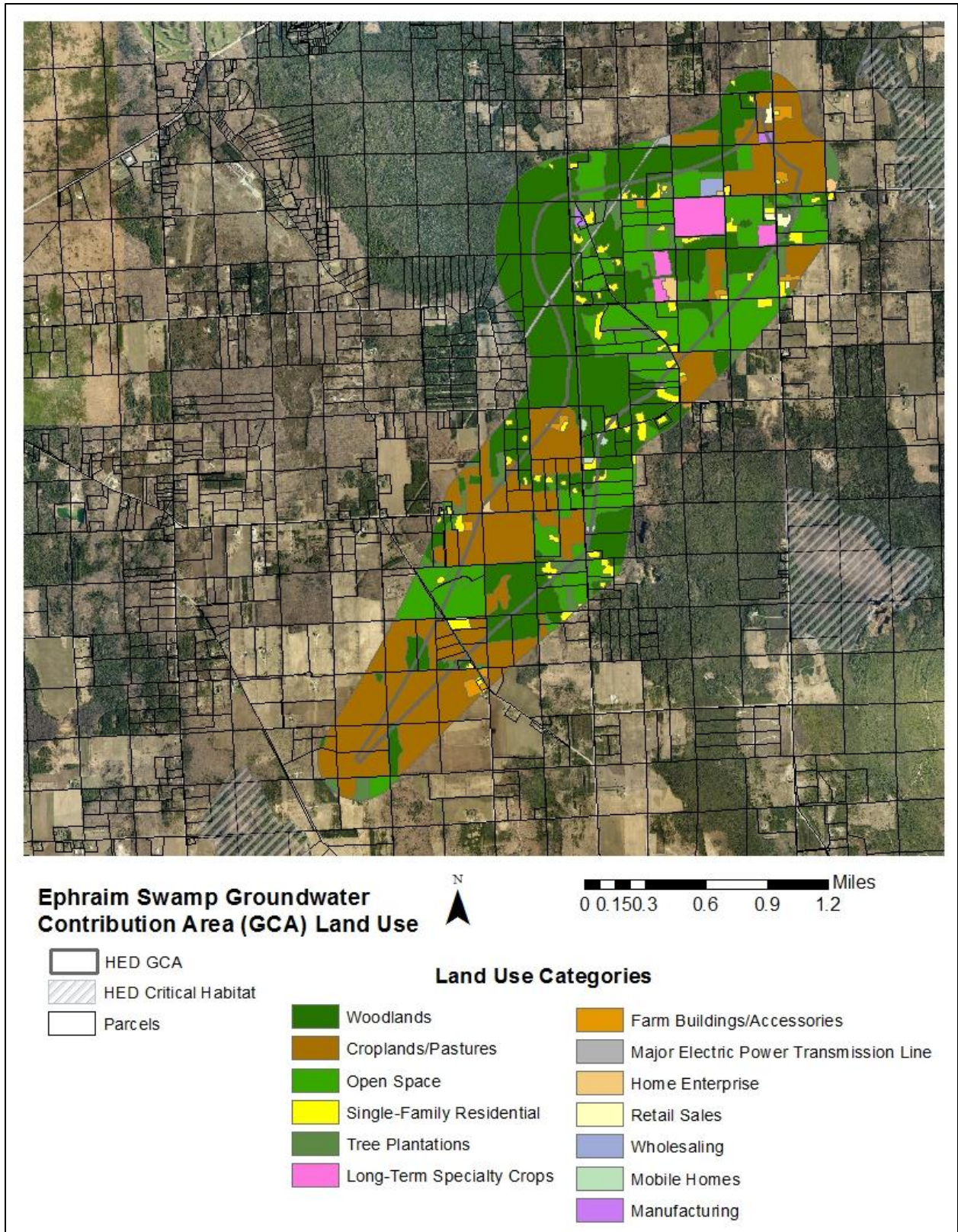


Figure D5. Contributing areas for larval sites near Ephraim Swamp

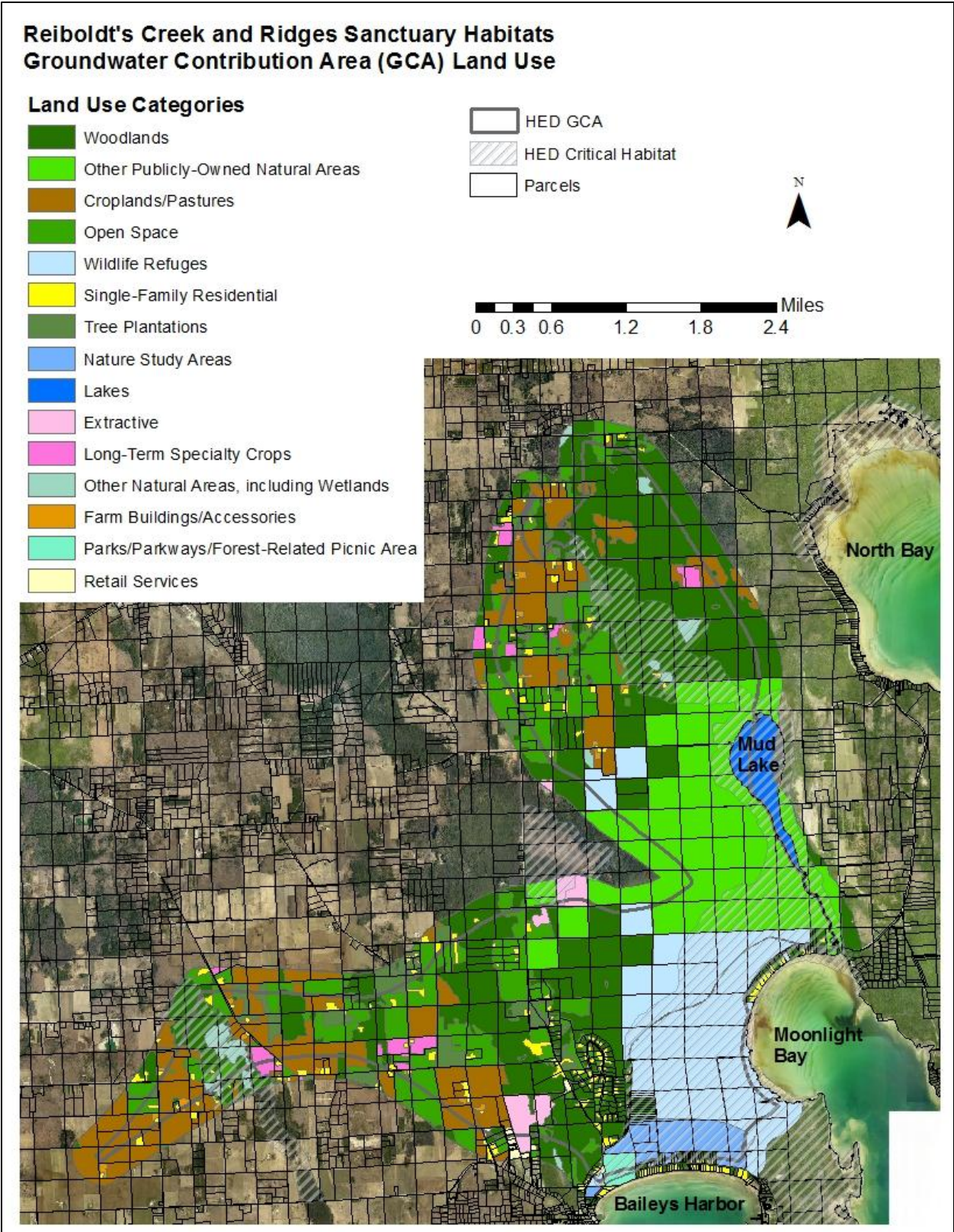


Figure D6. Contributing areas near Reiboldt's Creek and The Ridges Sanctuary

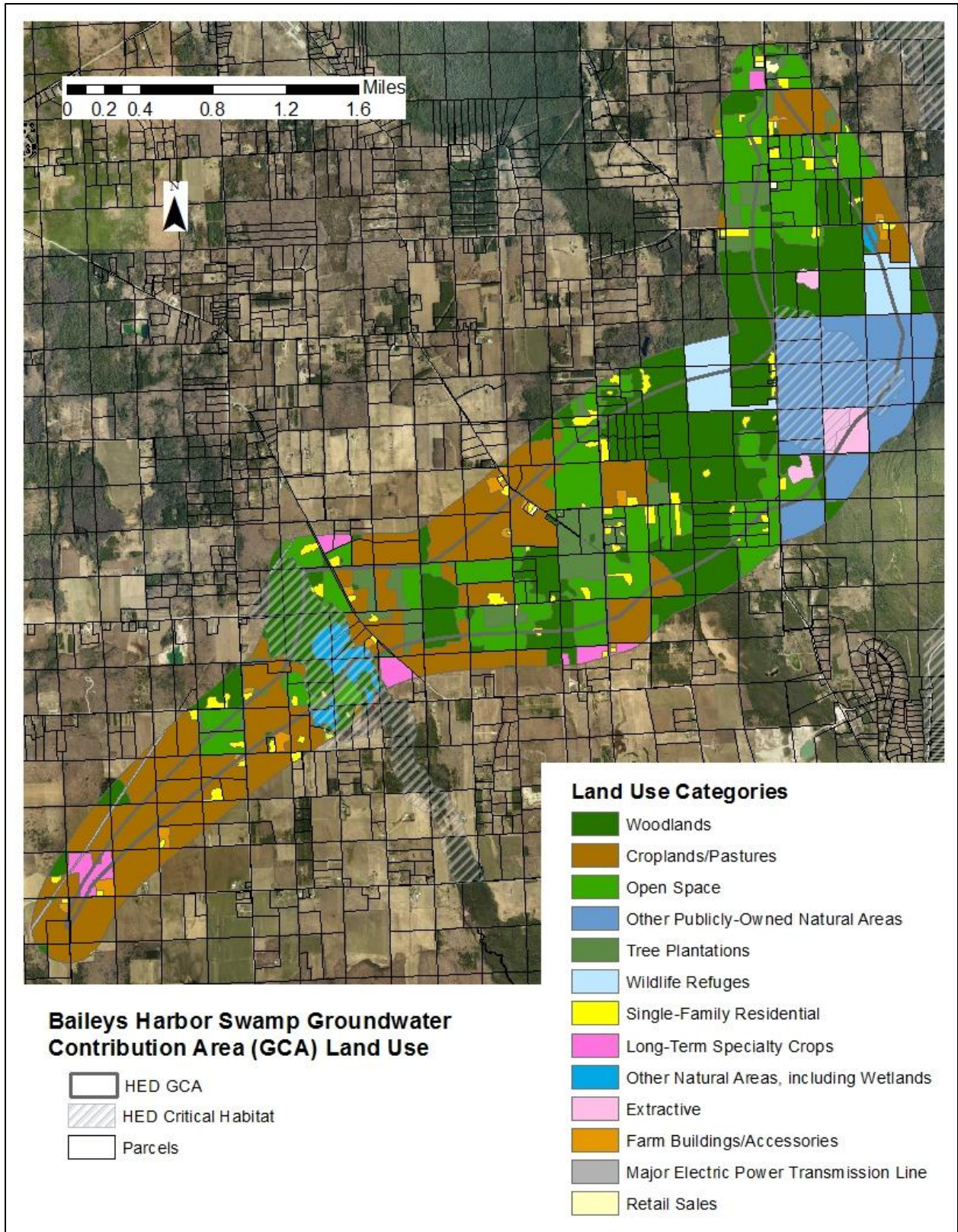


Figure D7. Contributing areas near Baileys Harbor Swamp

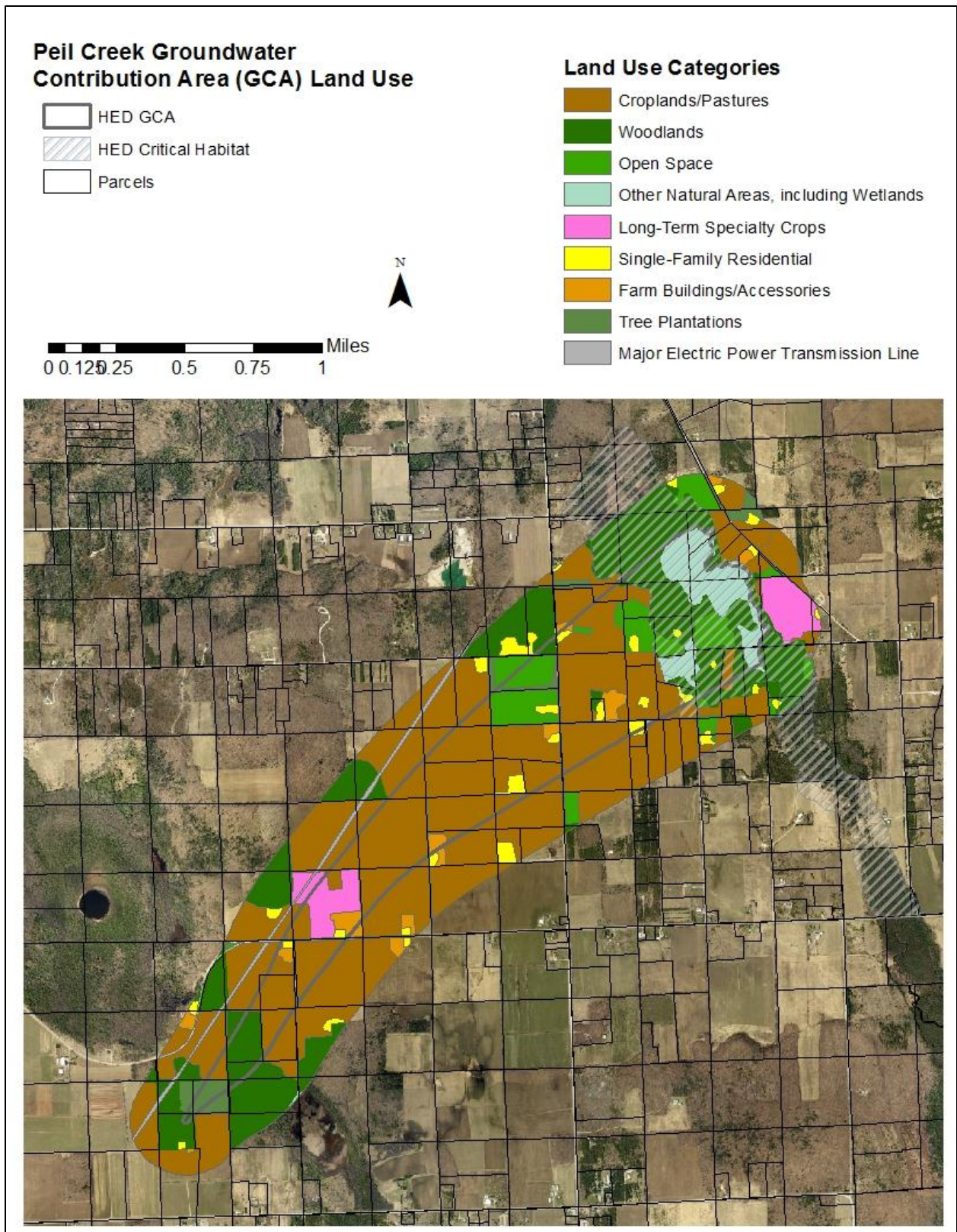


Figure D8. Contributing areas near Peil Creek

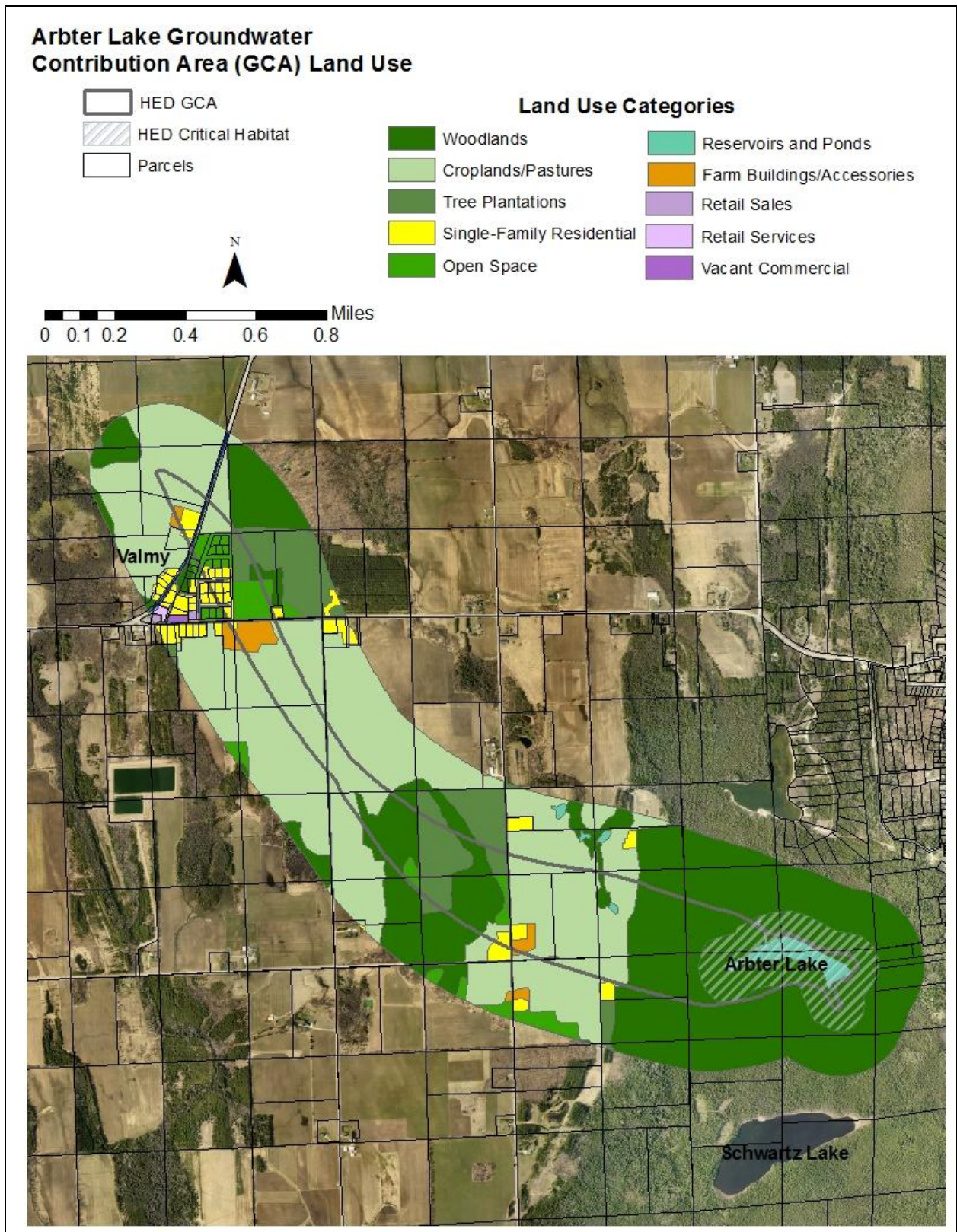


Figure D9. Contributing areas for larval sites at Arbter Lake

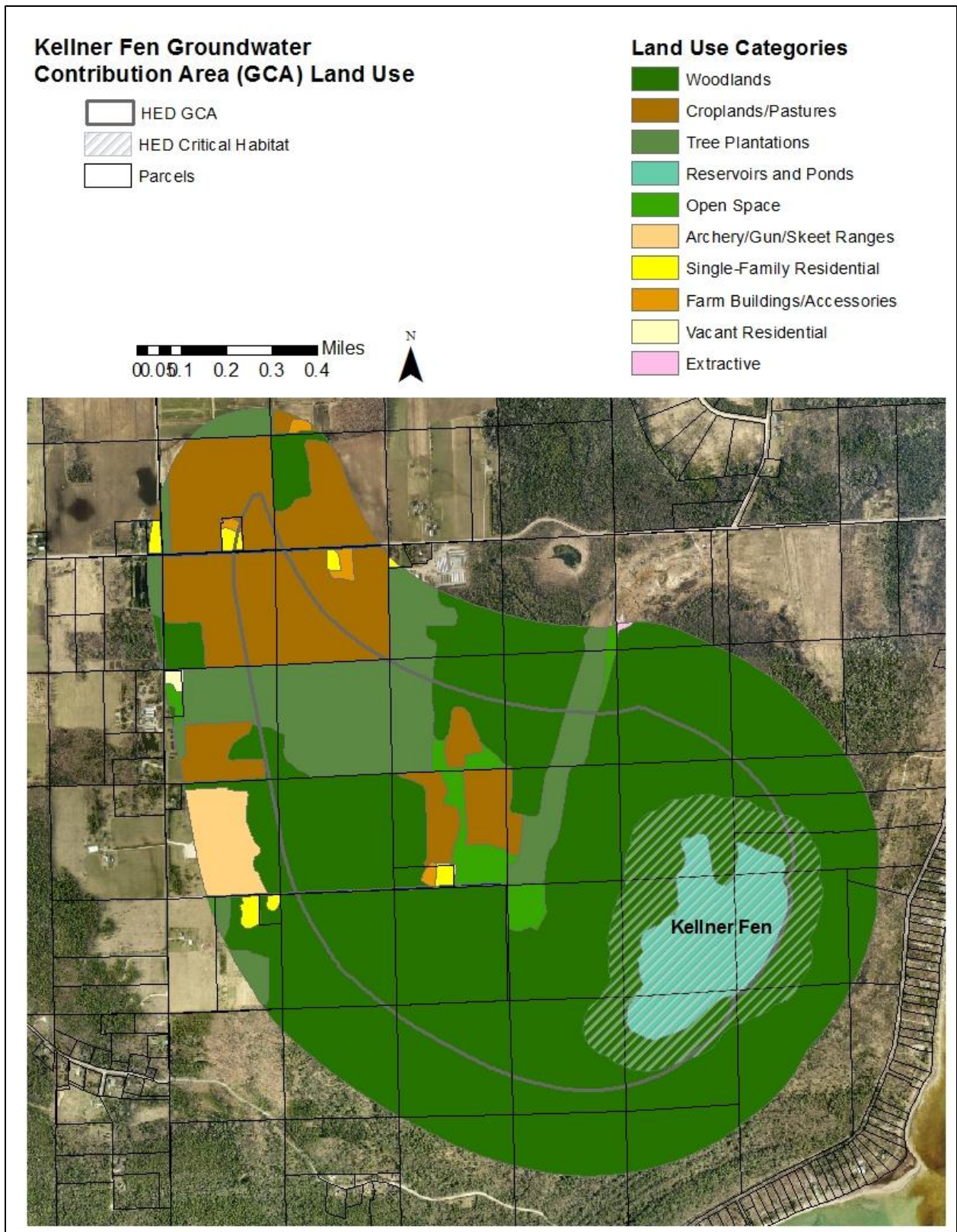


Figure D10. Contributing areas for larval sites near Kellner Fen

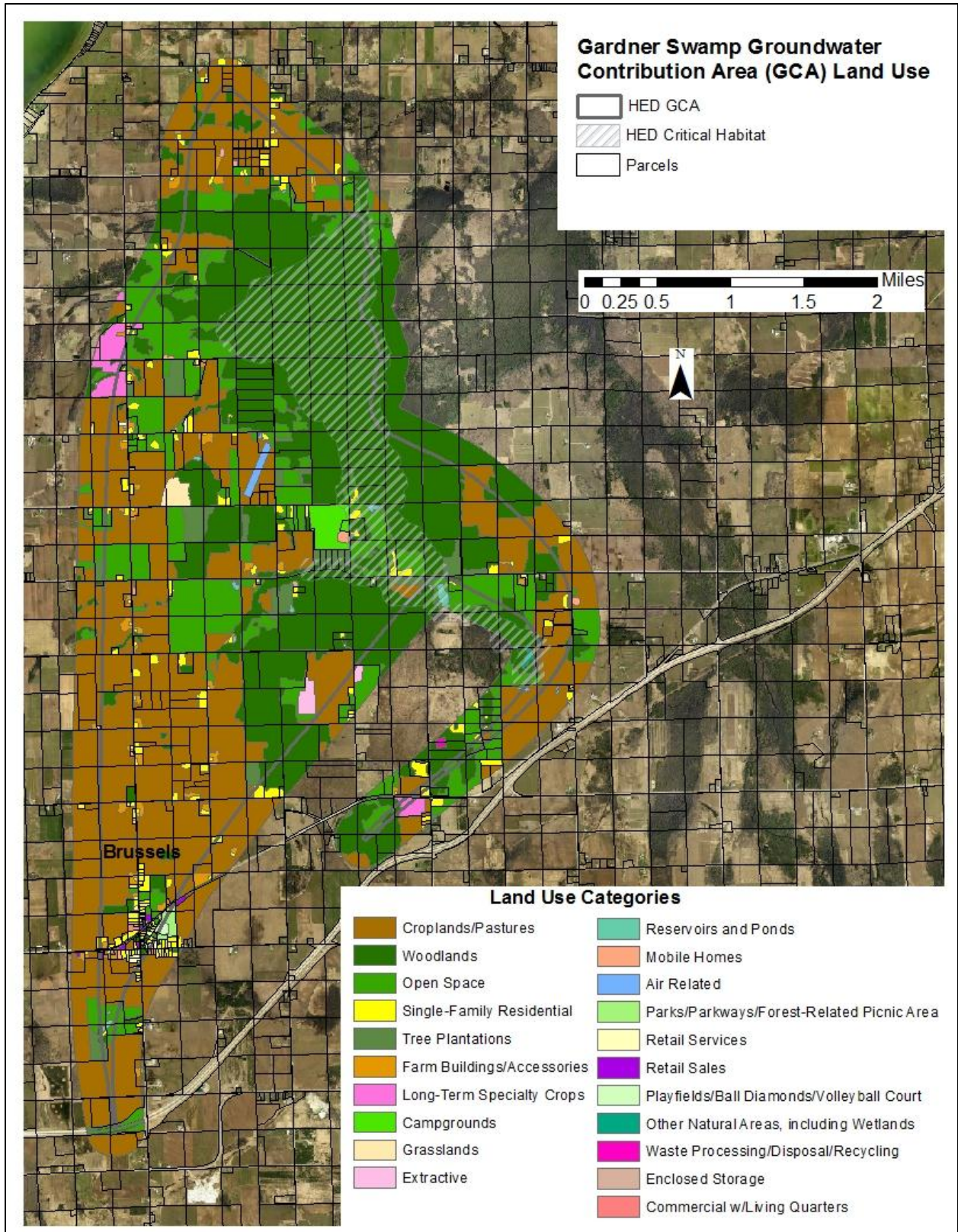


Figure D11. Contributing areas for larval sites near Gardner Swamp