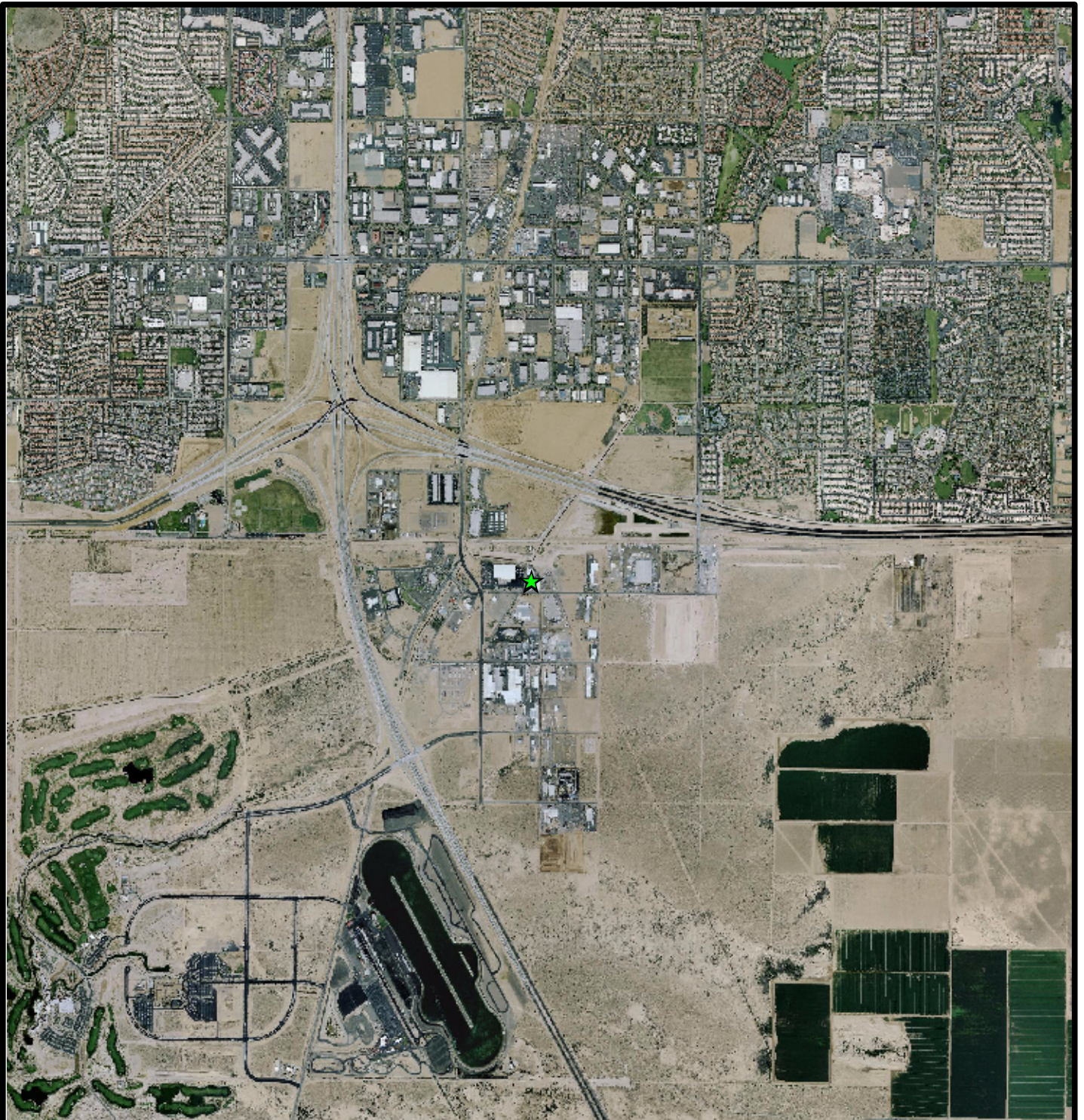
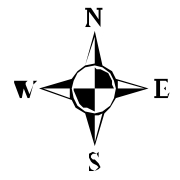


FIGURES



Legend

★ Facility



ENVIRON

Site Location Map
Romic Environmental Technologies Corporation
Chandler, Arizona

Figure
2.1

6001 Shellmound St., Suite 700, Emeryville, CA 94608

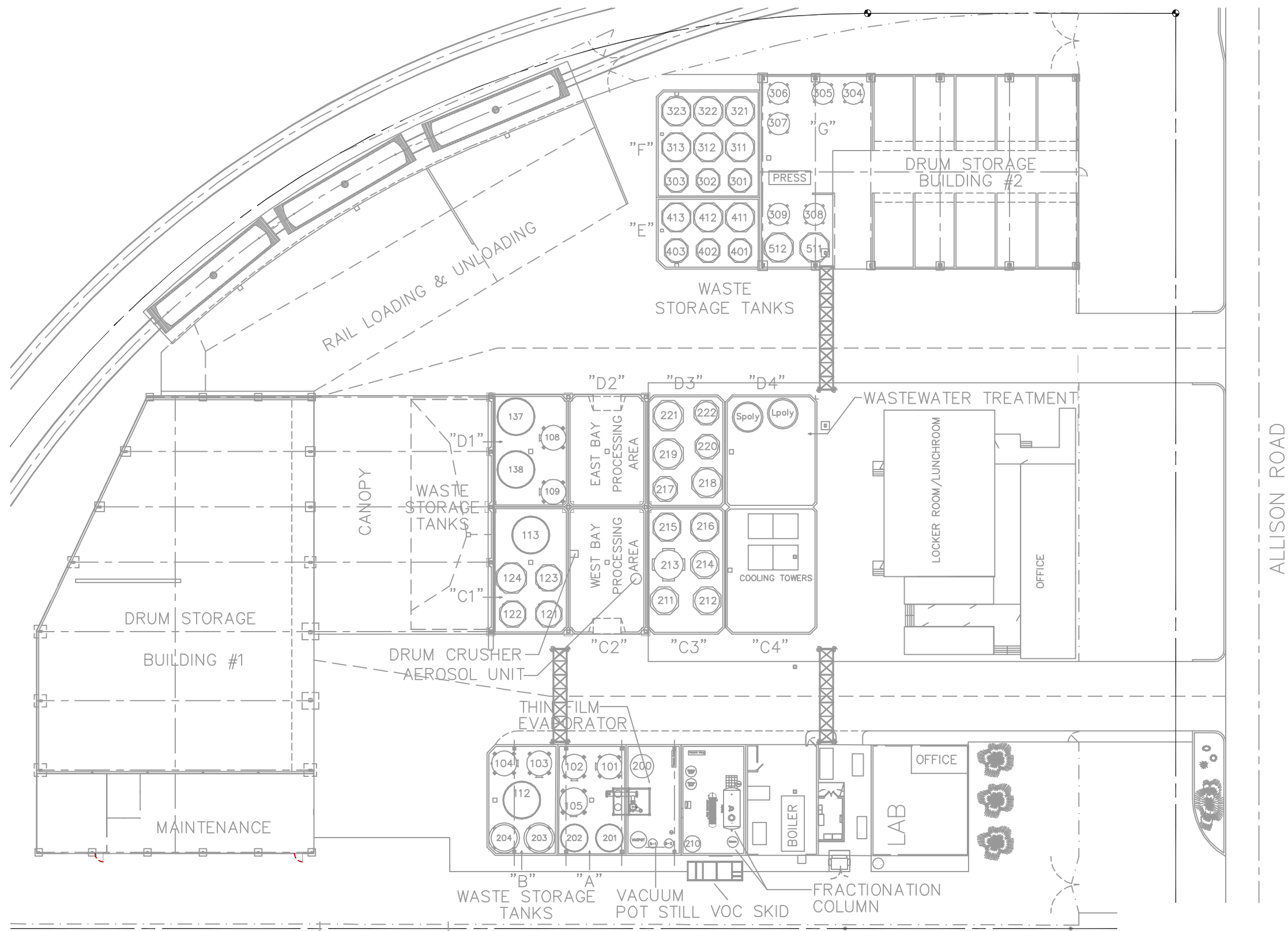
Drafter:

Date: 9/11/06

Contract Number:

Approved:

Revised:



ALLISON ROAD

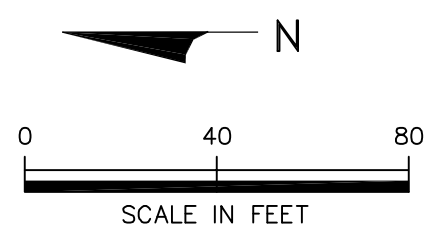


Figure 2.3
Layout of Lone Butte Industrial Park
Romic Environmental Technologies Corporation
Chandler, Arizona

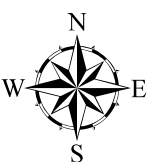
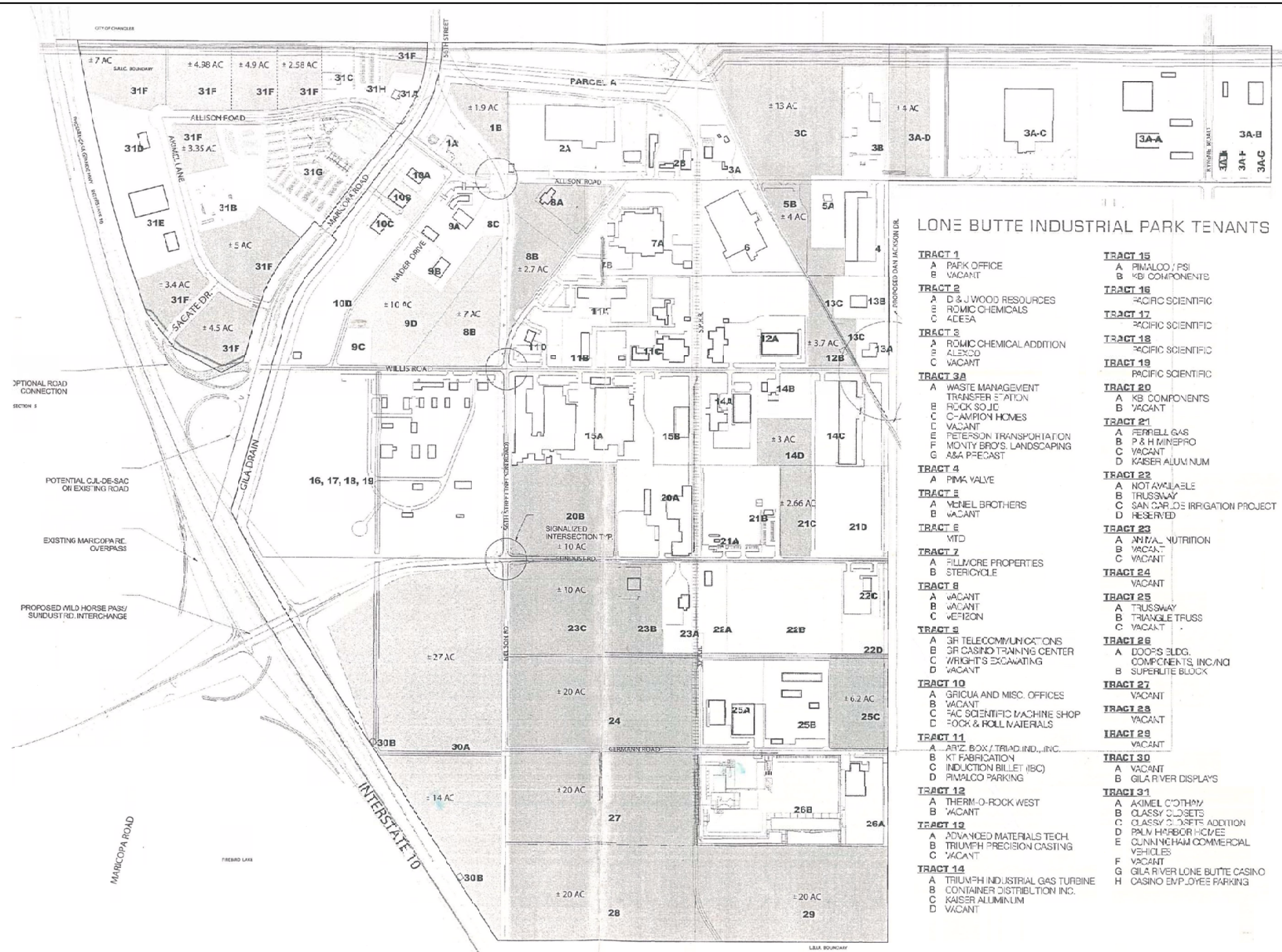


Figure 2.4
Residential Areas in the Vicinity of the Facility
Romic Environmental Technologies Corporation
Chandler, Arizona



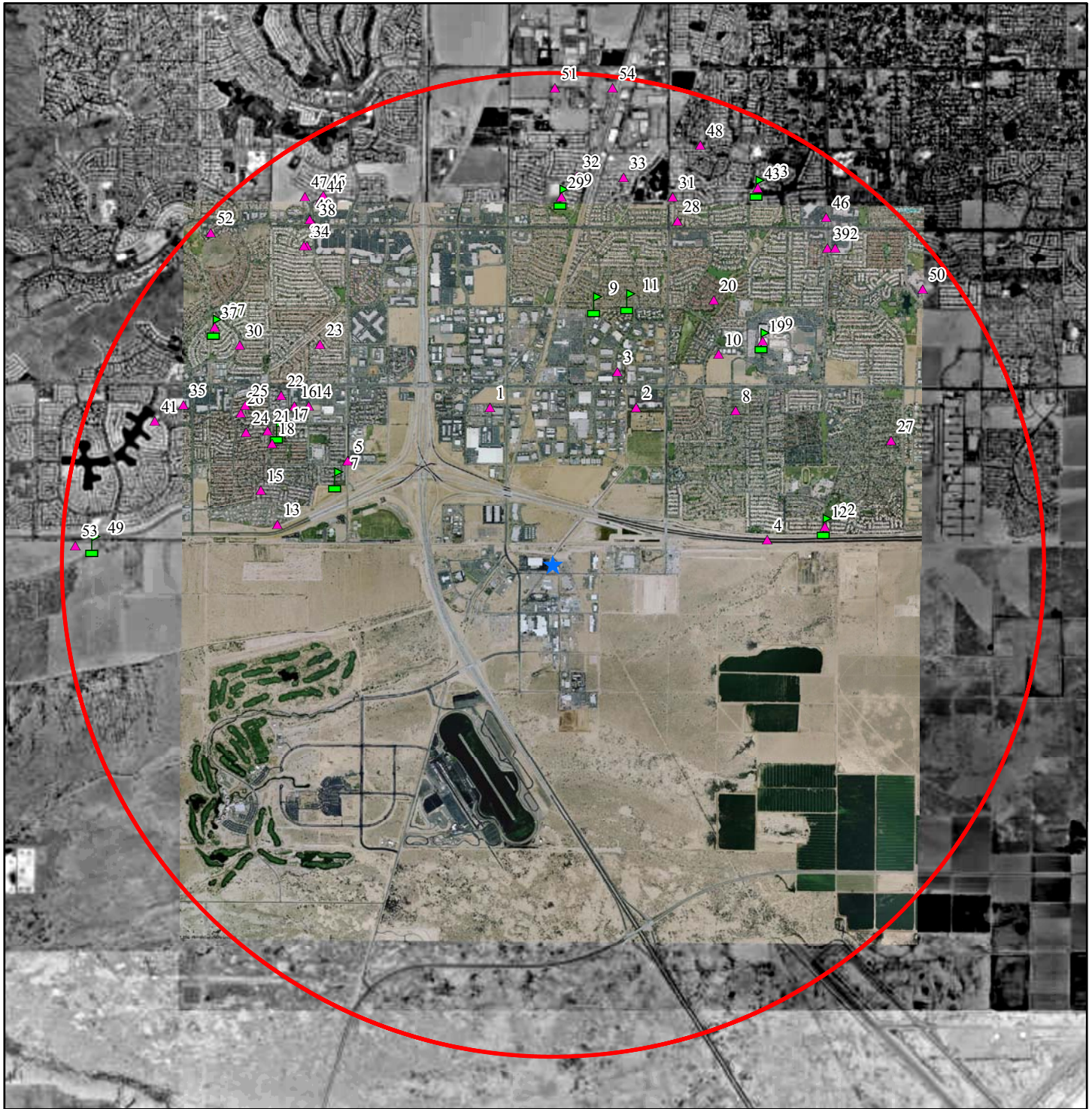
Legend

- ★ Facility
- Residences

0.5 0.25 0 0.5 Miles



Figure 2.5
Sensitive Receptors in the Vicinity of the Facility
Romic Environmental Technologies Corporation
Chandler, Arizona



Legend




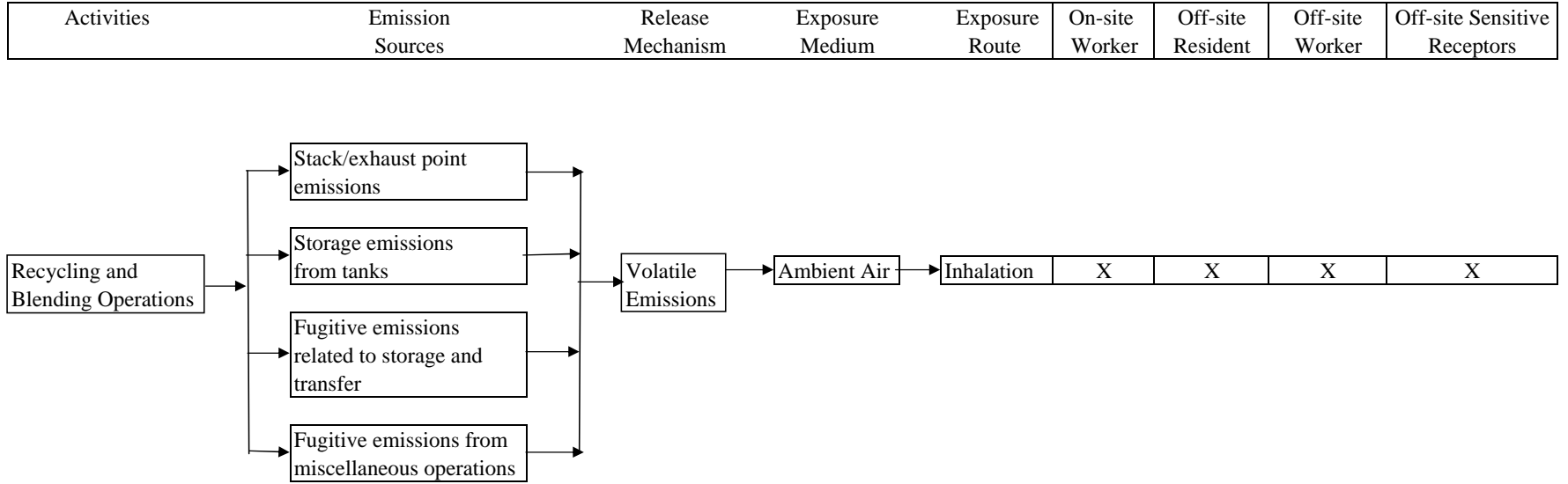
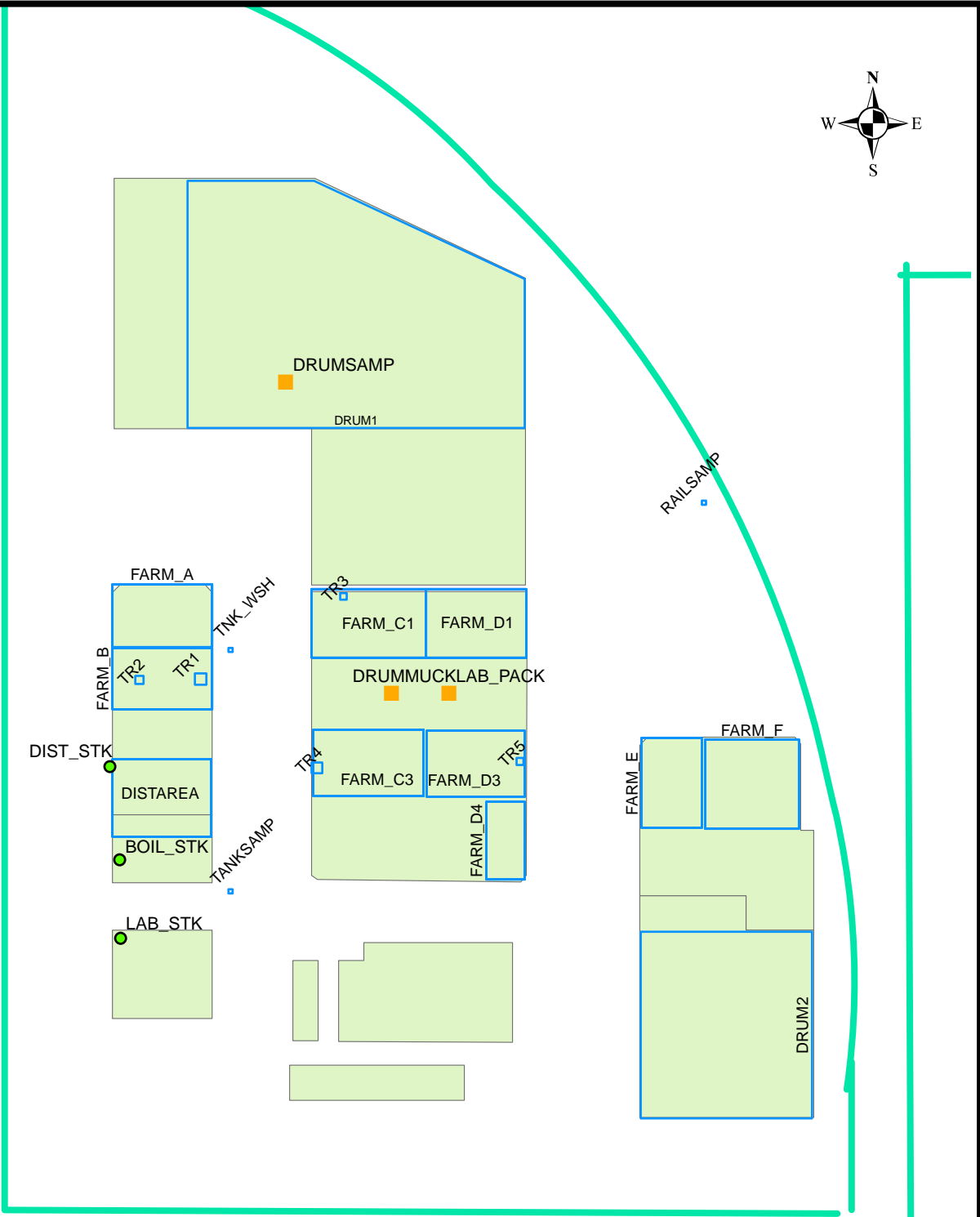
-  Facility
-  Schools
-  Sensitive Receptors



Figure 4.1
Conceptual Site Model
Romic Environmental Technologies Inc. - Chandler, Arizona

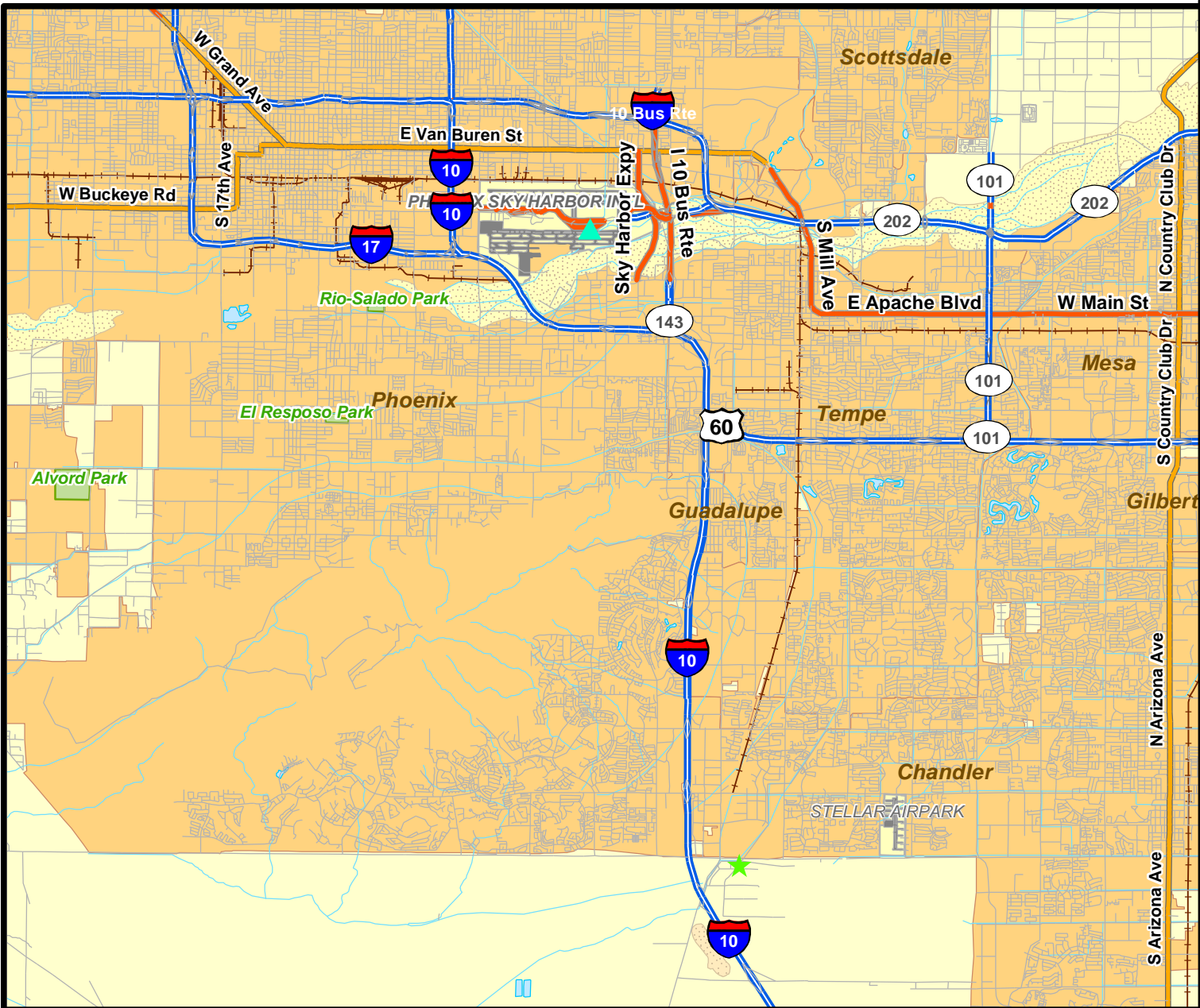




Legend

- Volume Sources (orange square)
- Point Sources (green circle)
- Area Sources (blue square)
- Buildings (light green rectangle)
- Facility_Boundary (red line)





Legend

- ★ Facility
- ▲ Phoenix Sky Harbor Airport



ENVIRON

Regional Topography
 Romc Environmental Technologies Corporation
 Chandler, Arizona

Figure
6.2

6001 Shellmound St., Suite 700, Emeryville, CA 94608

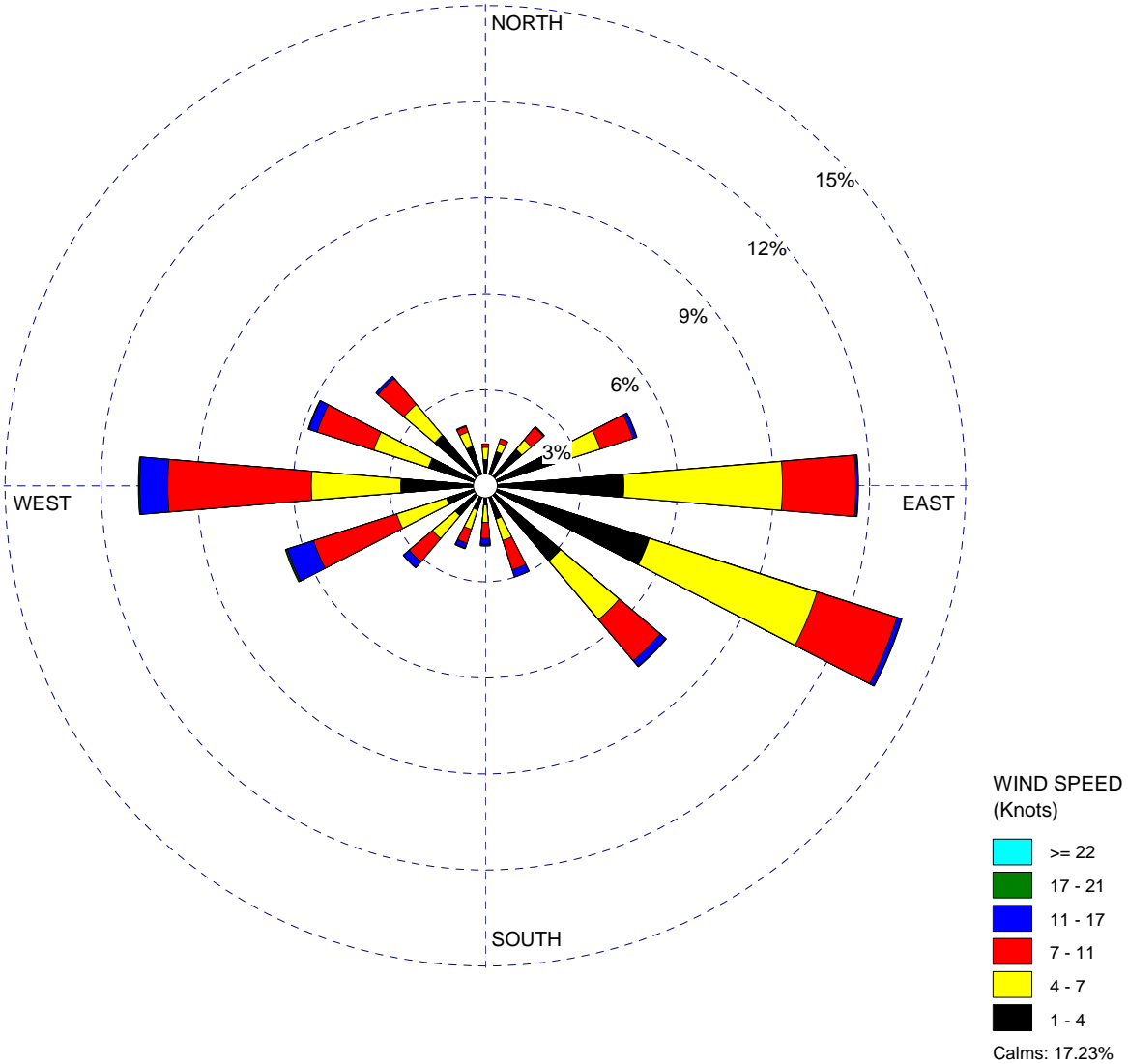
Drafter: _____ Date: 8/21/06 Contract Number: _____ Approved: _____ Revised: _____

WIND ROSE PLOT:

Figure 6.3 Surface Windrose for Phoenix Sky Harbor International Airport (1994)

DISPLAY:

**Wind Speed
Direction (blowing from)**



COMMENTS:

DATA PERIOD:

**1994
Jan 1 - Dec 31
00:00 - 23:00**

COMPANY NAME:

MODELER:

CALM WINDS:

17.23%

TOTAL COUNT:

8760 hrs.

AVG. WIND SPEED:

4.85 Knots

DATE:

08/21/2006

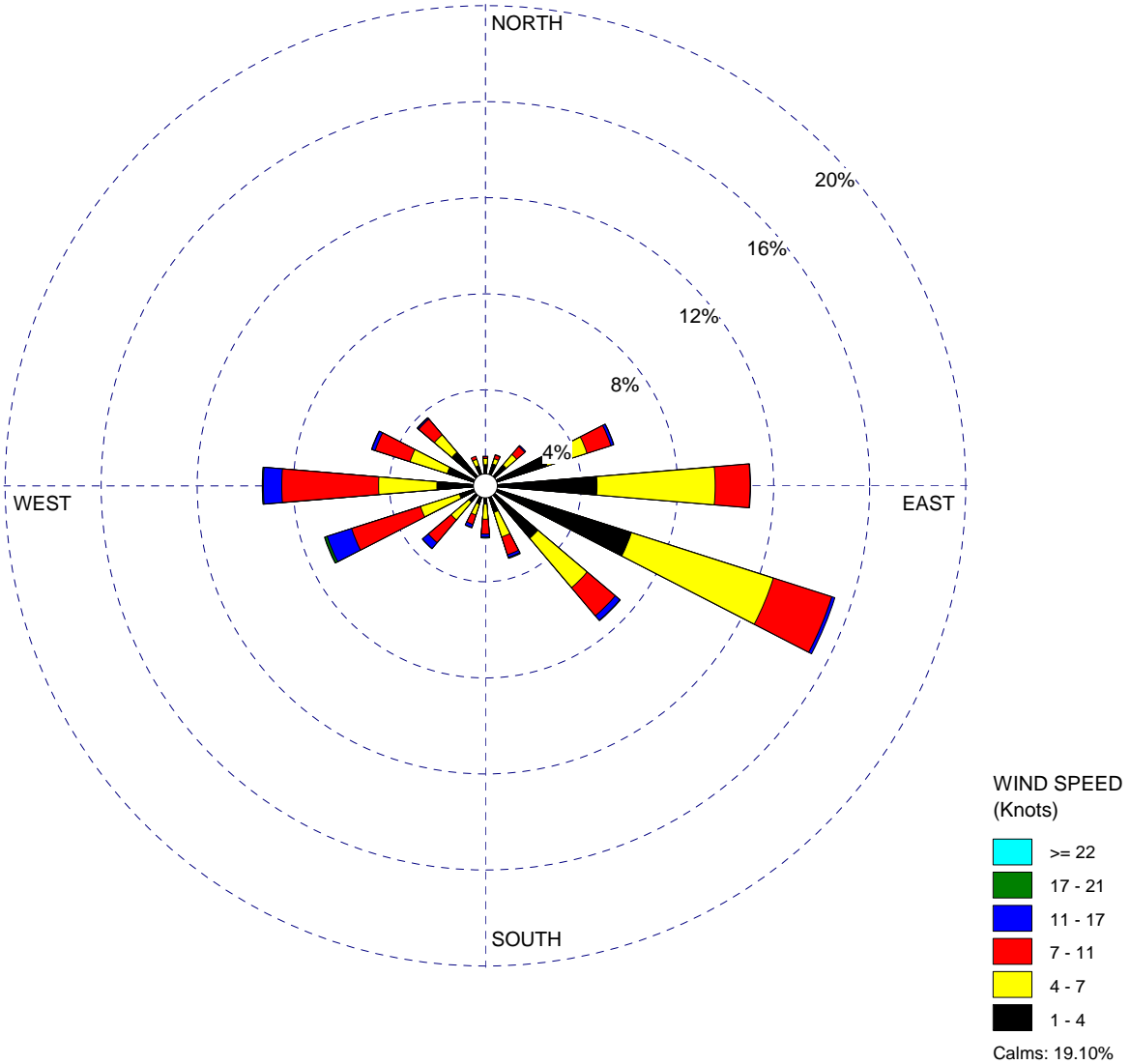
PROJECT NO.:

WIND ROSE PLOT:

Figure 6.4 Surface Windrose for Phoenix Sky Harbor International Airport (1995)

DISPLAY:

**Wind Speed
Direction (blowing from)**



COMMENTS:

DATA PERIOD:

**1995
Jan 1 - Dec 31
00:00 - 23:00**

COMPANY NAME:

MODELER:

CALM WINDS:

19.10%

TOTAL COUNT:

8760 hrs.

AVG. WIND SPEED:

4.70 Knots

DATE:

08/21/2006

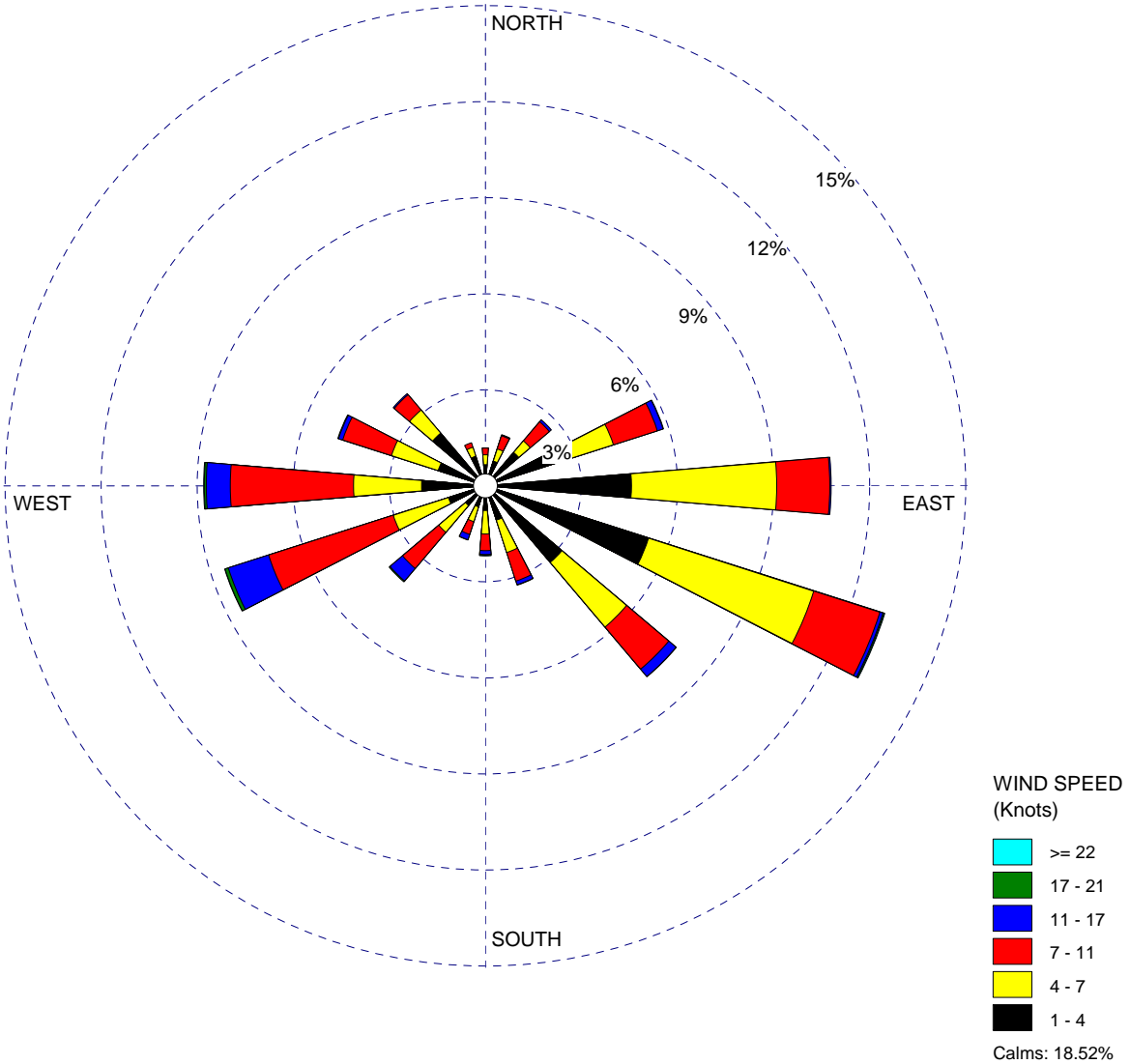
PROJECT NO.:

WIND ROSE PLOT:

Figure 6.5 Surface Windrose for Phoenix Sky Harbor International Airport (1996)

DISPLAY:

**Wind Speed
Direction (blowing from)**



COMMENTS:

DATA PERIOD:

**1996
Jan 1 - Dec 31
00:00 - 23:00**

COMPANY NAME:

MODELER:

CALM WINDS:

18.52%

TOTAL COUNT:

8784 hrs.

AVG. WIND SPEED:

4.88 Knots

DATE:

08/21/2006

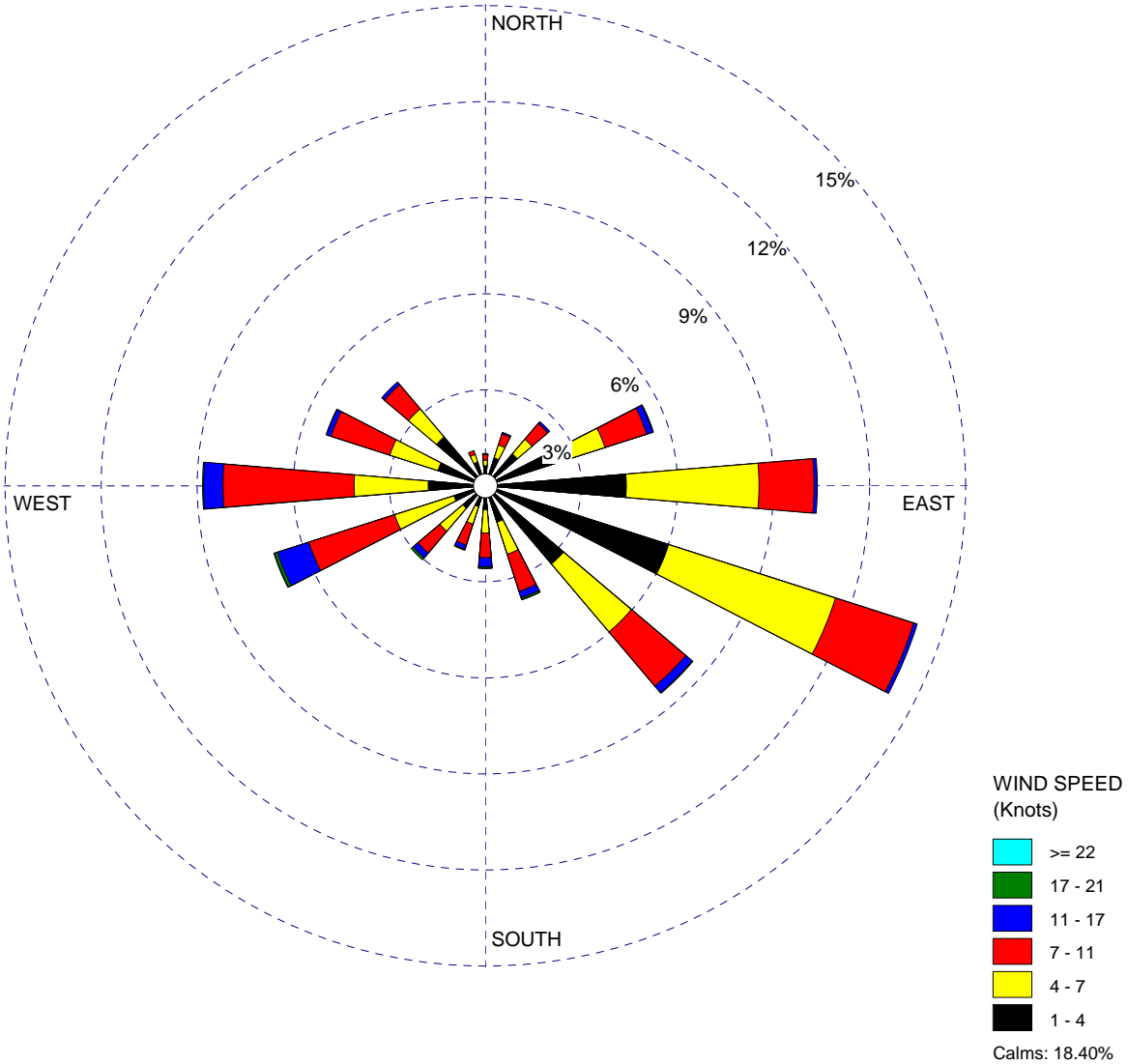
PROJECT NO.:

WIND ROSE PLOT:

Figure 6.6 Surface Windrose for Phoenix Sky Harbor International Airport (1997)

DISPLAY:

**Wind Speed
Direction (blowing from)**



COMMENTS:

DATA PERIOD:

**1997
Jan 1 - Dec 31
00:00 - 23:00**

COMPANY NAME:

MODELER:

CALM WINDS:

18.40%

TOTAL COUNT:

8760 hrs.

AVG. WIND SPEED:

4.88 Knots

DATE:

08/21/2006

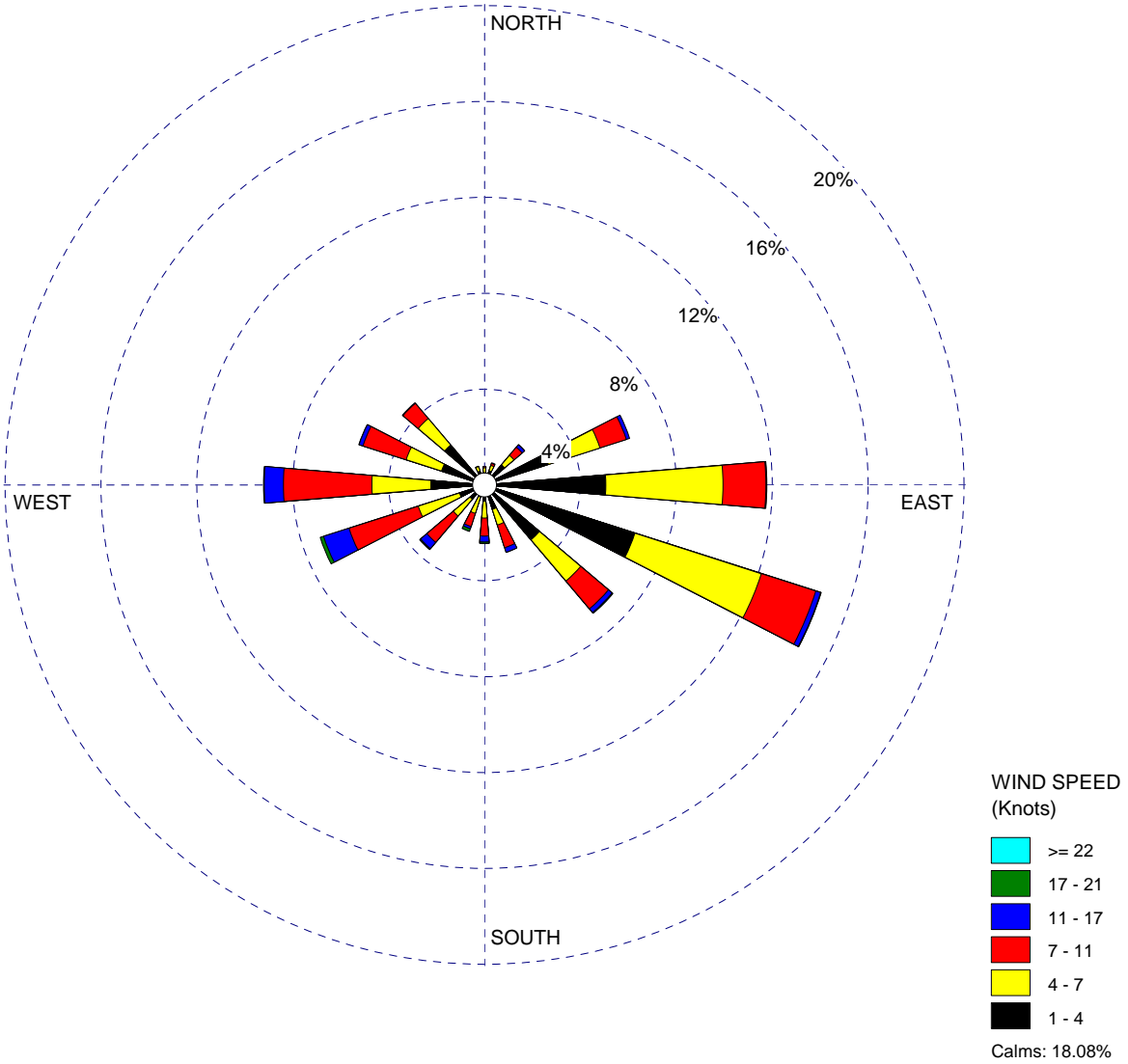
PROJECT NO.:

WIND ROSE PLOT:

Figure 6.7 Surface Windrose for Phoenix Sky Harbor International Airport (1998)

DISPLAY:

**Wind Speed
Direction (blowing from)**



COMMENTS:

DATA PERIOD:

**1998
Jan 1 - Dec 31
00:00 - 23:00**

COMPANY NAME:

MODELER:

CALM WINDS:

18.08%

TOTAL COUNT:

8760 hrs.

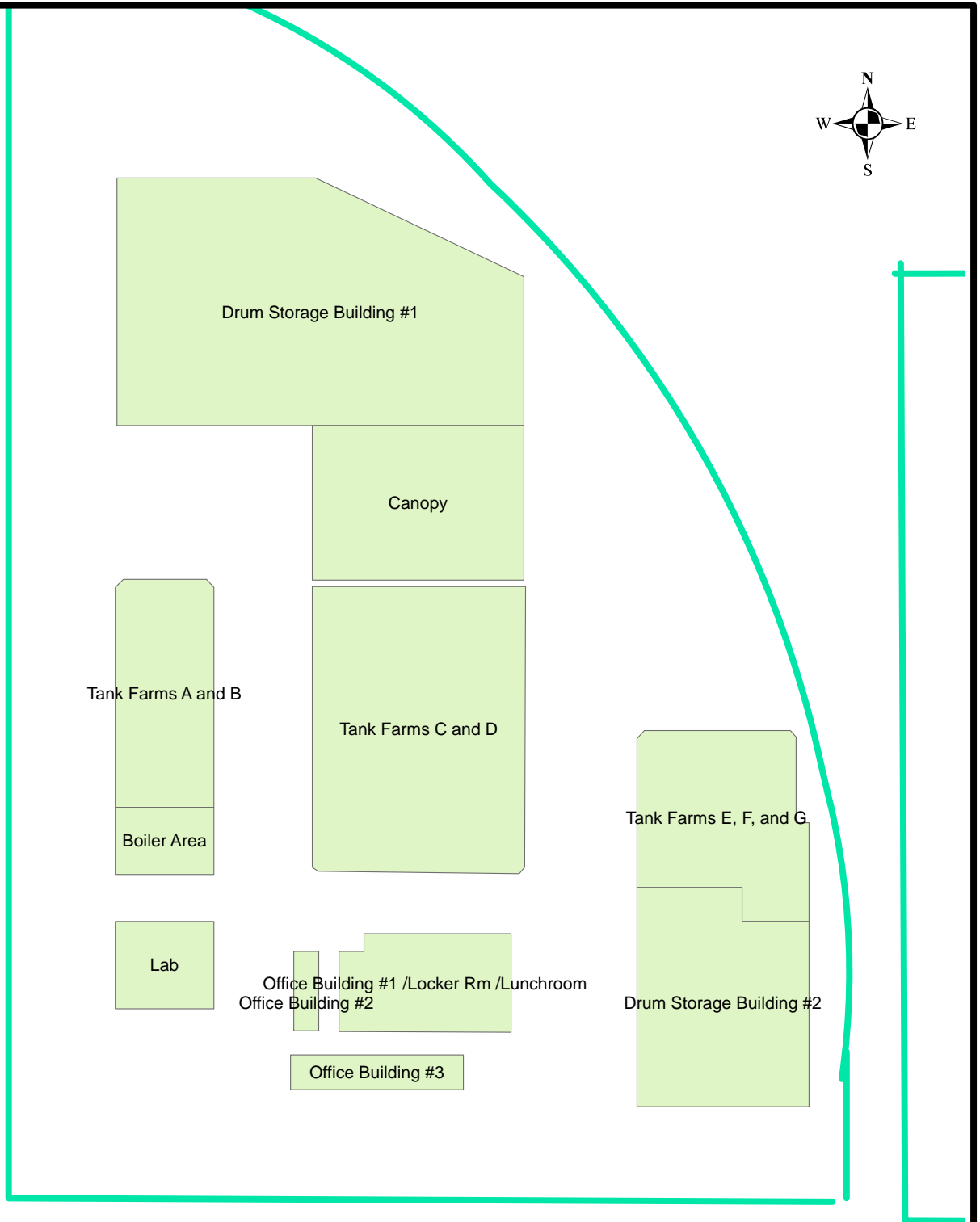
AVG. WIND SPEED:

4.85 Knots

DATE:

08/21/2006

PROJECT NO.:



Legend

-  Buildings
-  Facility Boundary



ENVIRON

6001 Shellmound St., Suite 700, Emeryville, CA 94608

Building Downwash Parameters
Romic Environmental Technologies Corporation
Chandler, Arizona

Figure

6.8

Drafter:

Date: 8/21/06



Contract Number:

Approved:

Revised:



Legend

-  Facility
-  Worker Receptor



ENVIRON

6001 Shellmound St., Suite 700, Emeryville, CA 94608

Off-Site Worker Receptors
Romic Environmental Technologies Corporation
Chandler, Arizona

Figure
6.9

Drafter:

Date:

Contract Number:

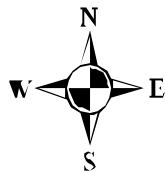
Approved:

Revised:



Legend

- ★ Facility
- Sensitive Receptors
- Residential Receptor



ENVIRON

6001 Shellmound St., Suite 700, Emeryville, CA 94608

**Off-Site Residential and Sensitive Receptors
Romic Environmental Technologies Corporation
Chandler, Arizona**

Figure

6.10

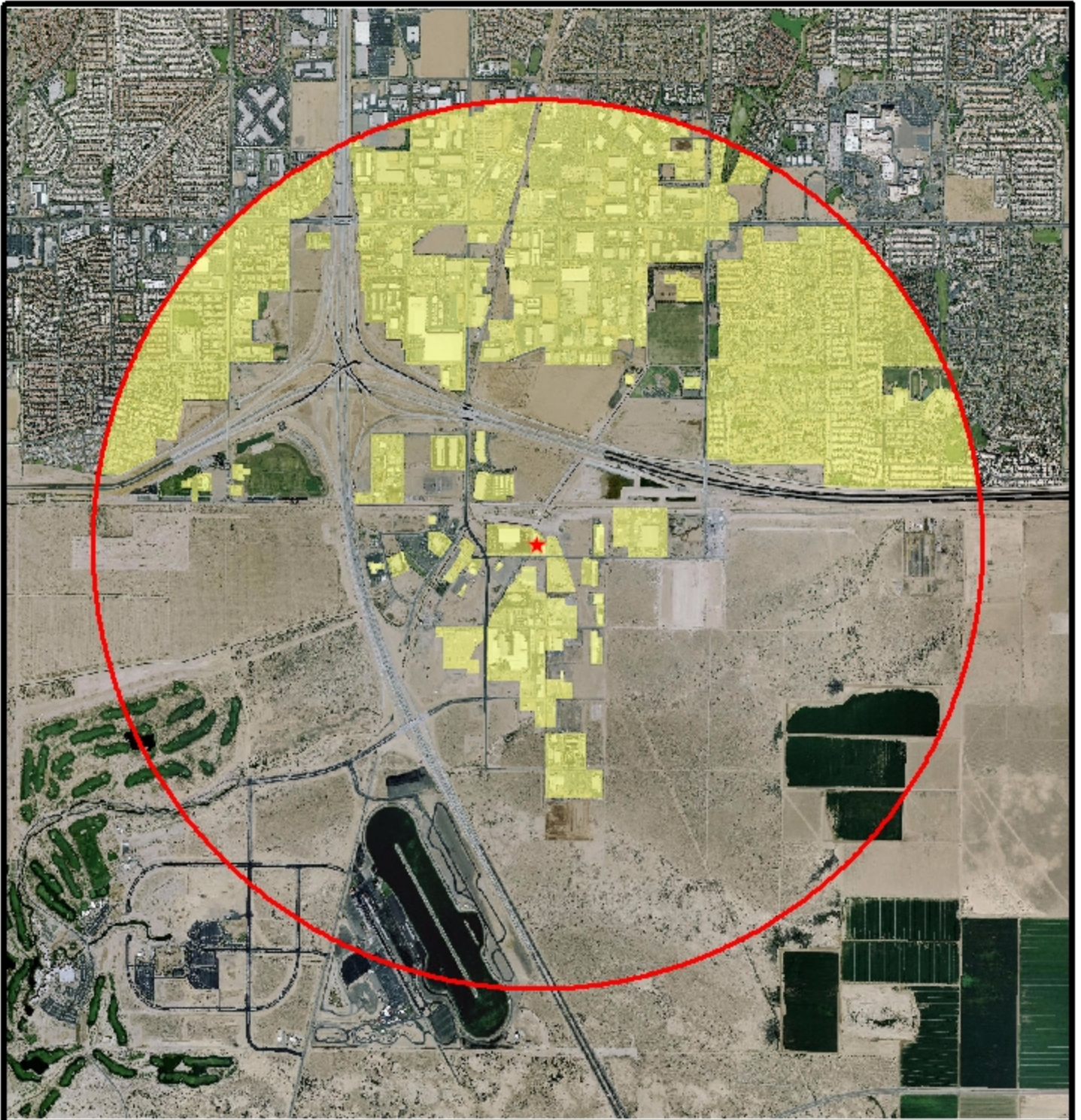
Drafter:

Date:

Contract Number:

Approved:

Revised:



Legend

- ★ Facility location
- Urban land use
- 3 kilometer radius



ENVIRON

6001 Shellmound St., Suite 700, Emeryville, CA 94608

Land Use Analysis
 Romc Environmental Technologies Corporation
 Chandler, Arizona

Figure

6.11

Drafter:

Date:

Contract Number:

Approved:

Revised:



Legend

- ★ Facility
- 10E-6



ENVIRON

6001 Shellmound St., Suite 700, Emeryville, CA 94608

Isopleth - Worker Risks - AEI
Romic Environmental Technologies Corporation
Chandler, Arizona

Figure
7.1

Drafter:

Date: 9/11/06

Contract Number:

Approved:

Revised:



Legend

- ★ Facility
- 10E-5
- 10E-6



ENVIRON

Isopleth - Worker Risks - RME
Romic Environmental Technologies Corporation
Chandler, Arizona

Figure
7.2

6001 Shellmound St., Suite 700, Emeryville, CA 94608

Drafter:

Date: 9/11/06

Contract Number:

Approved:

Revised: