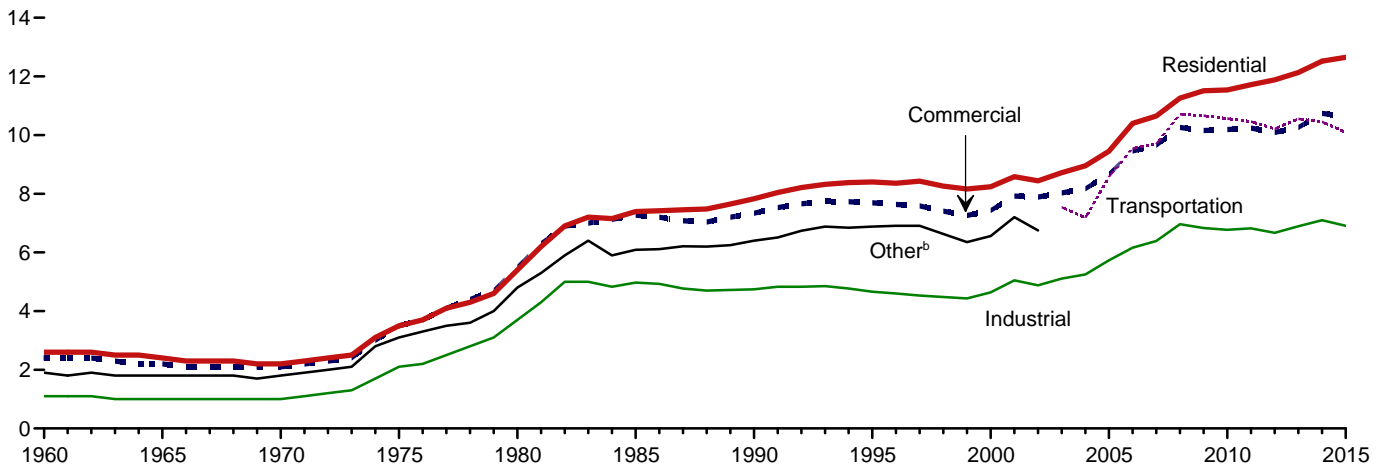
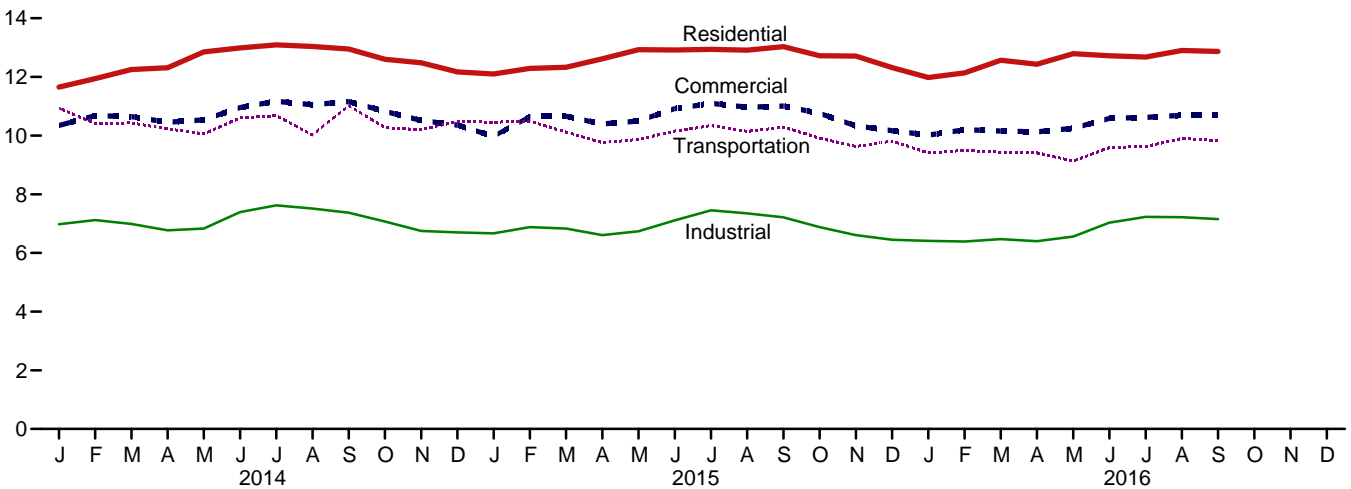


**Figure 9.2 Average Retail Prices of Electricity**  
(Cents<sup>a</sup> per Kilowatt-hour)

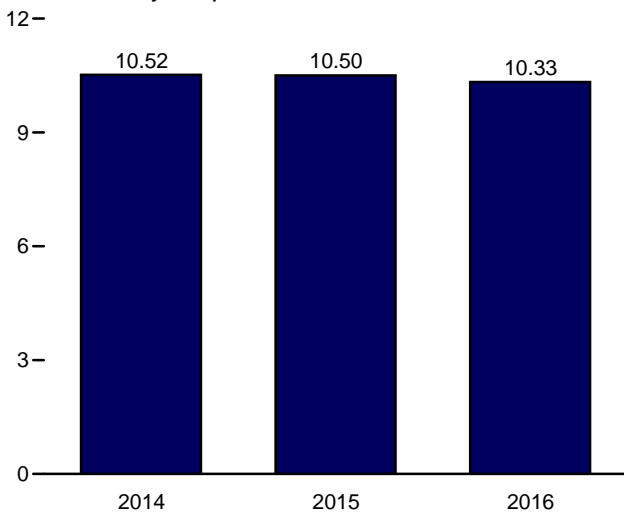
By Sector, 1960–2015



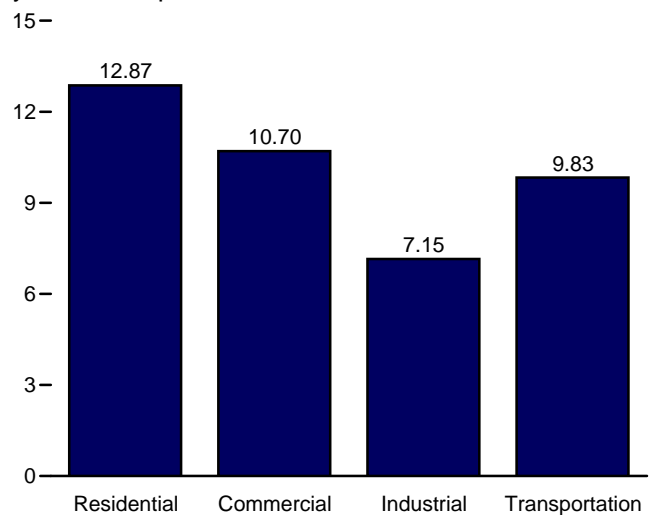
By Sector, Monthly



Total, January–September



By Sector, September 2016



<sup>a</sup> Prices are not adjusted for inflation. See “Nominal Price” in Glossary.

<sup>b</sup> Public street and highway lighting, interdepartmental sales, other sales to public authorities, agricultural and irrigation, and transportation including railroads and railways.

Note: Includes taxes.

Web Page: <http://www.eia.gov/totalenergy/data/monthly/#prices>.

Source: Table 9.8.