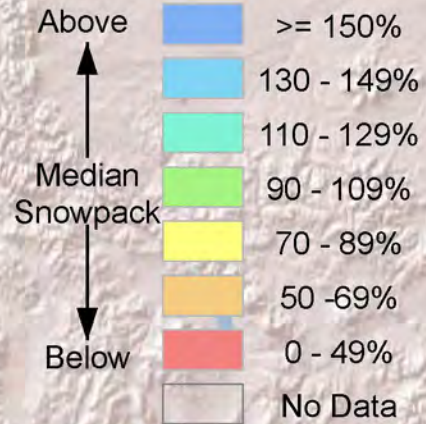
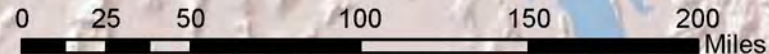
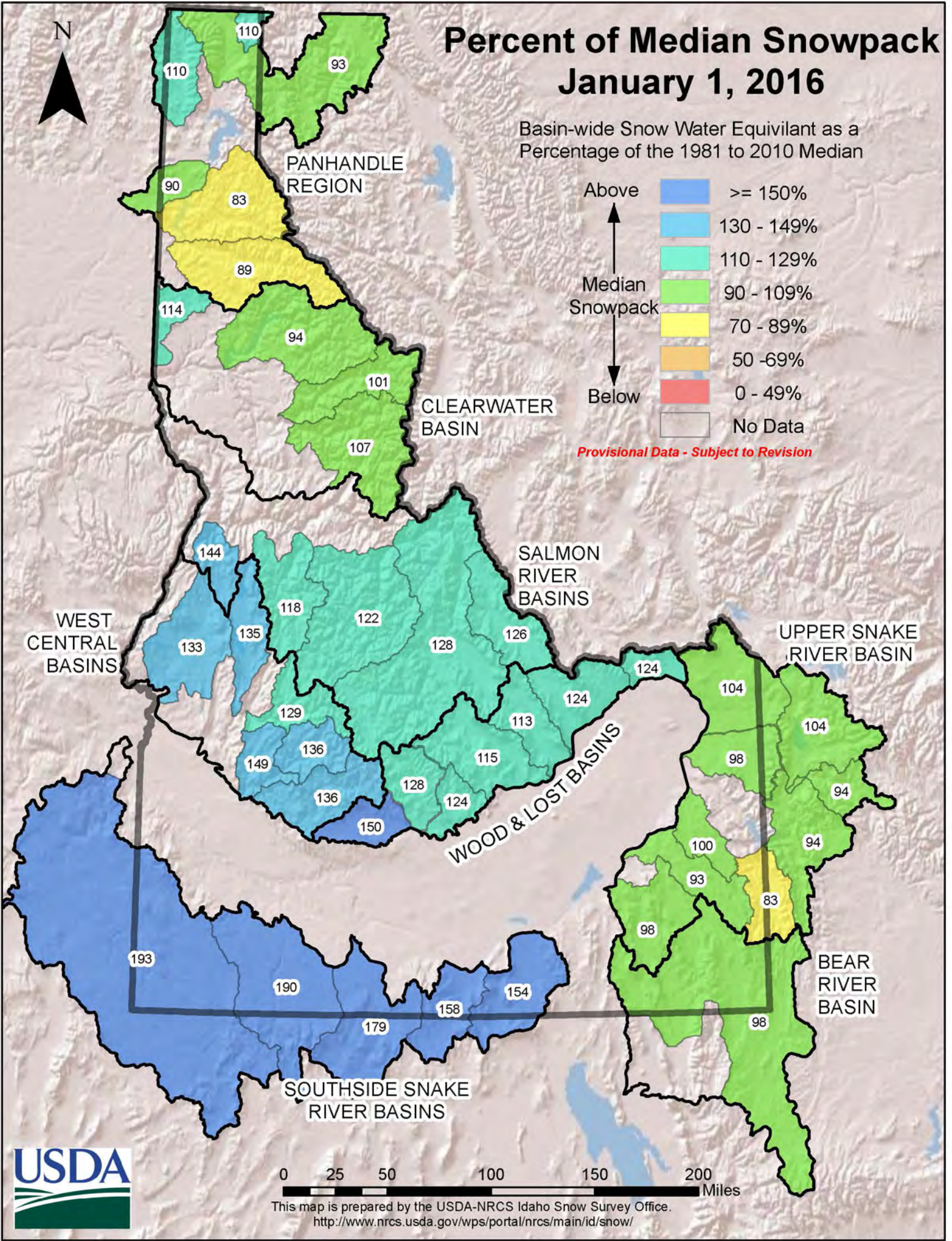


# Percent of Median Snowpack January 1, 2016

Basin-wide Snow Water Equivalent as a Percentage of the 1981 to 2010 Median



*Provisional Data - Subject to Revision*



This map is prepared by the USDA-NRCS Idaho Snow Survey Office.  
<http://www.nrcs.usda.gov/wps/portal/nrcs/main/id/snow/>

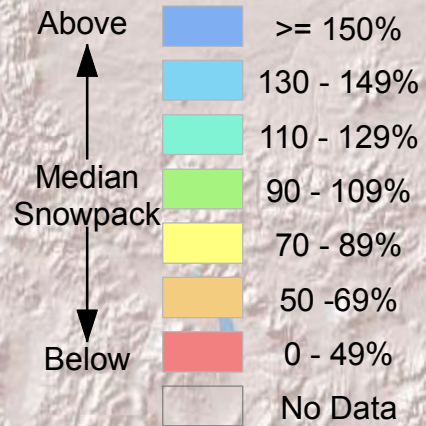




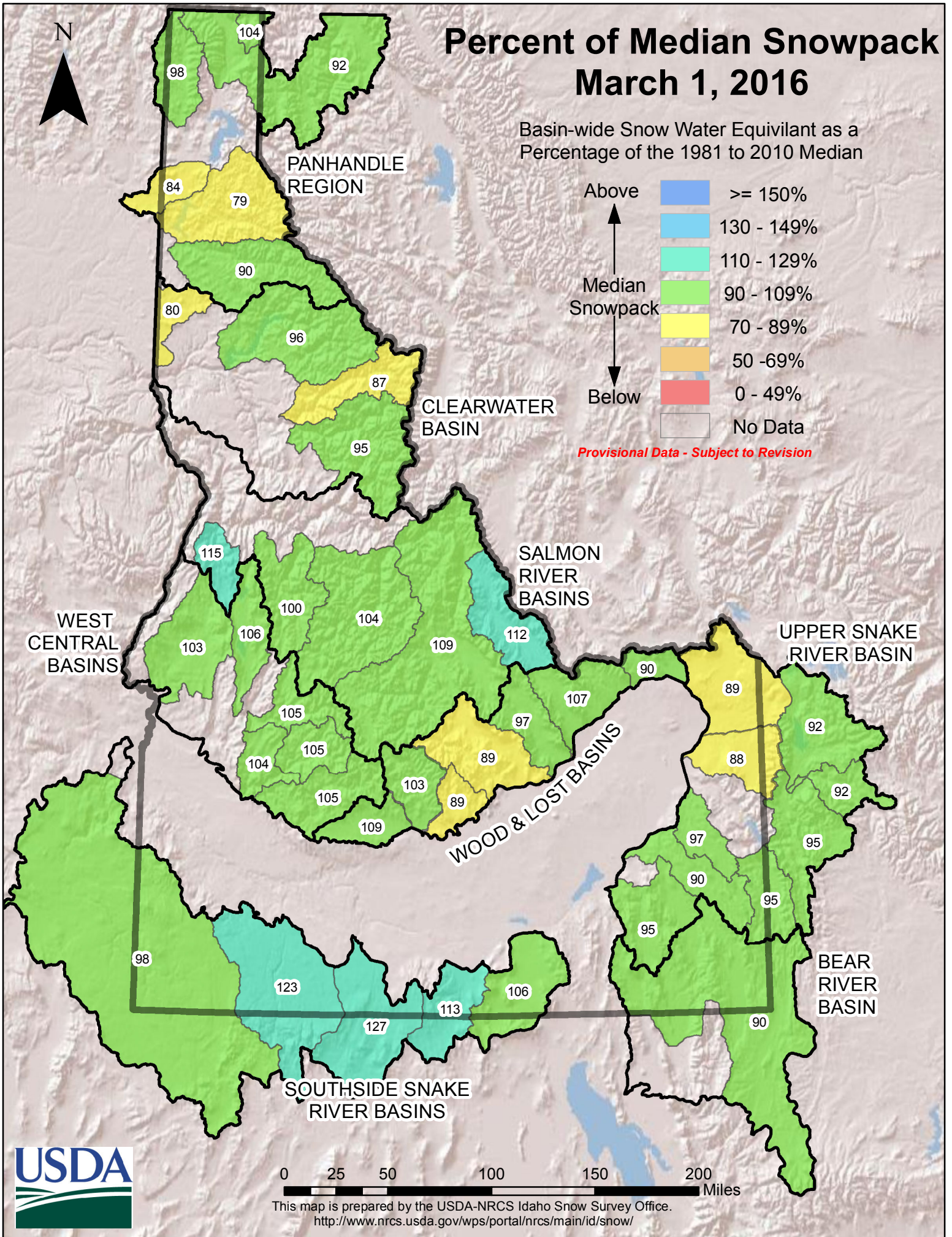


# Percent of Median Snowpack March 1, 2016

Basin-wide Snow Water Equivalent as a Percentage of the 1981 to 2010 Median



*Provisional Data - Subject to Revision*



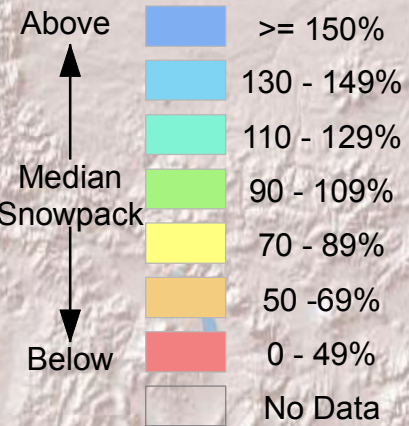
0 25 50 100 150 200 Miles

This map is prepared by the USDA-NRCS Idaho Snow Survey Office.  
<http://www.nrcs.usda.gov/wps/portal/nrcs/main/id/snow/>

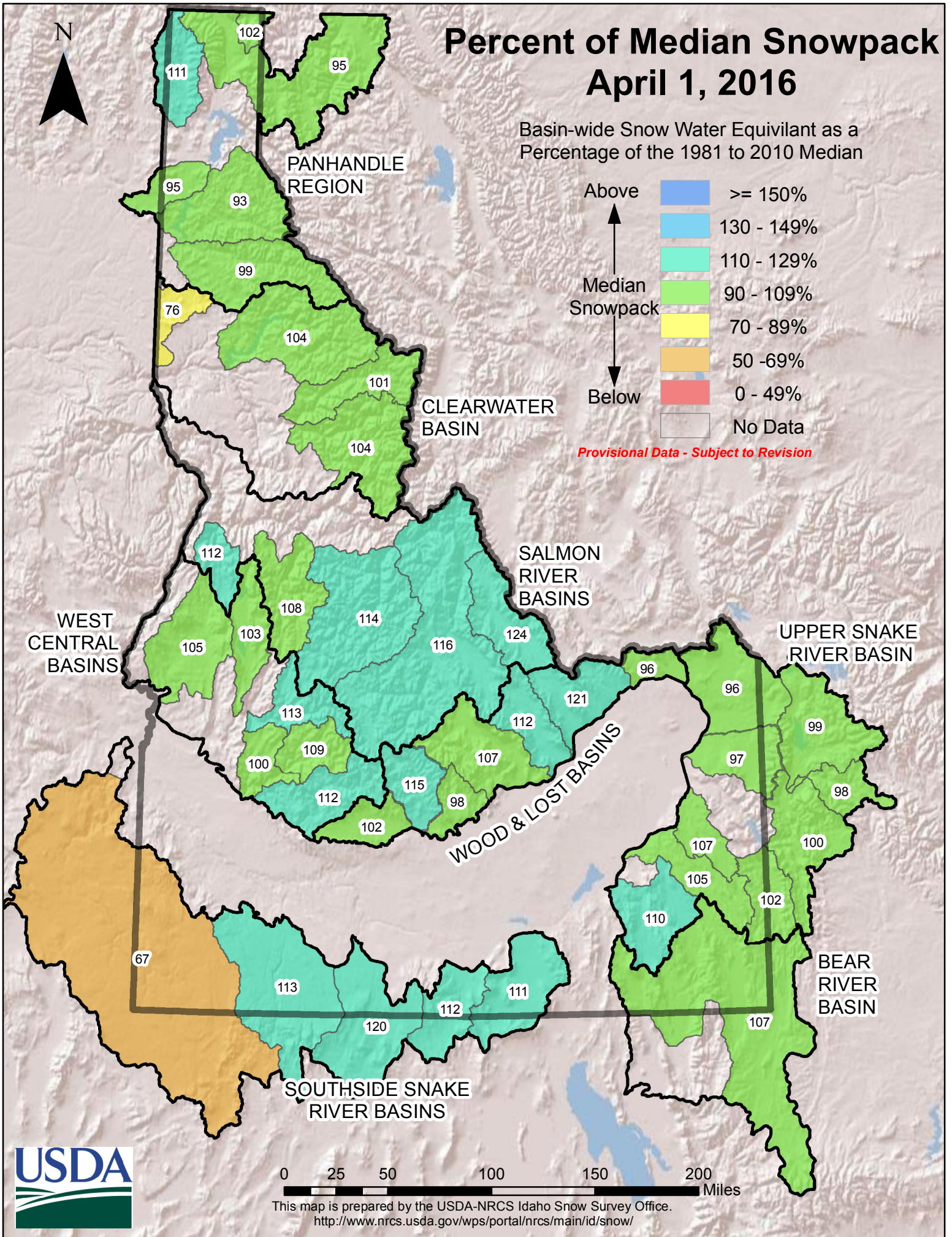


# Percent of Median Snowpack April 1, 2016

Basin-wide Snow Water Equivalent as a Percentage of the 1981 to 2010 Median



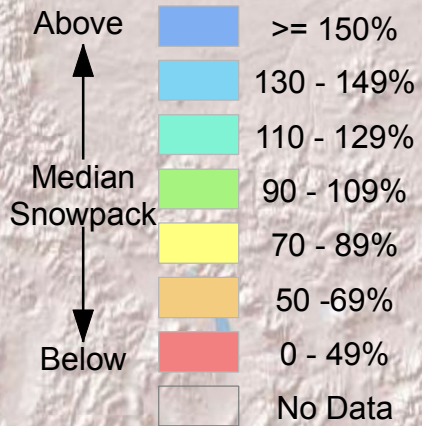
*Provisional Data - Subject to Revision*



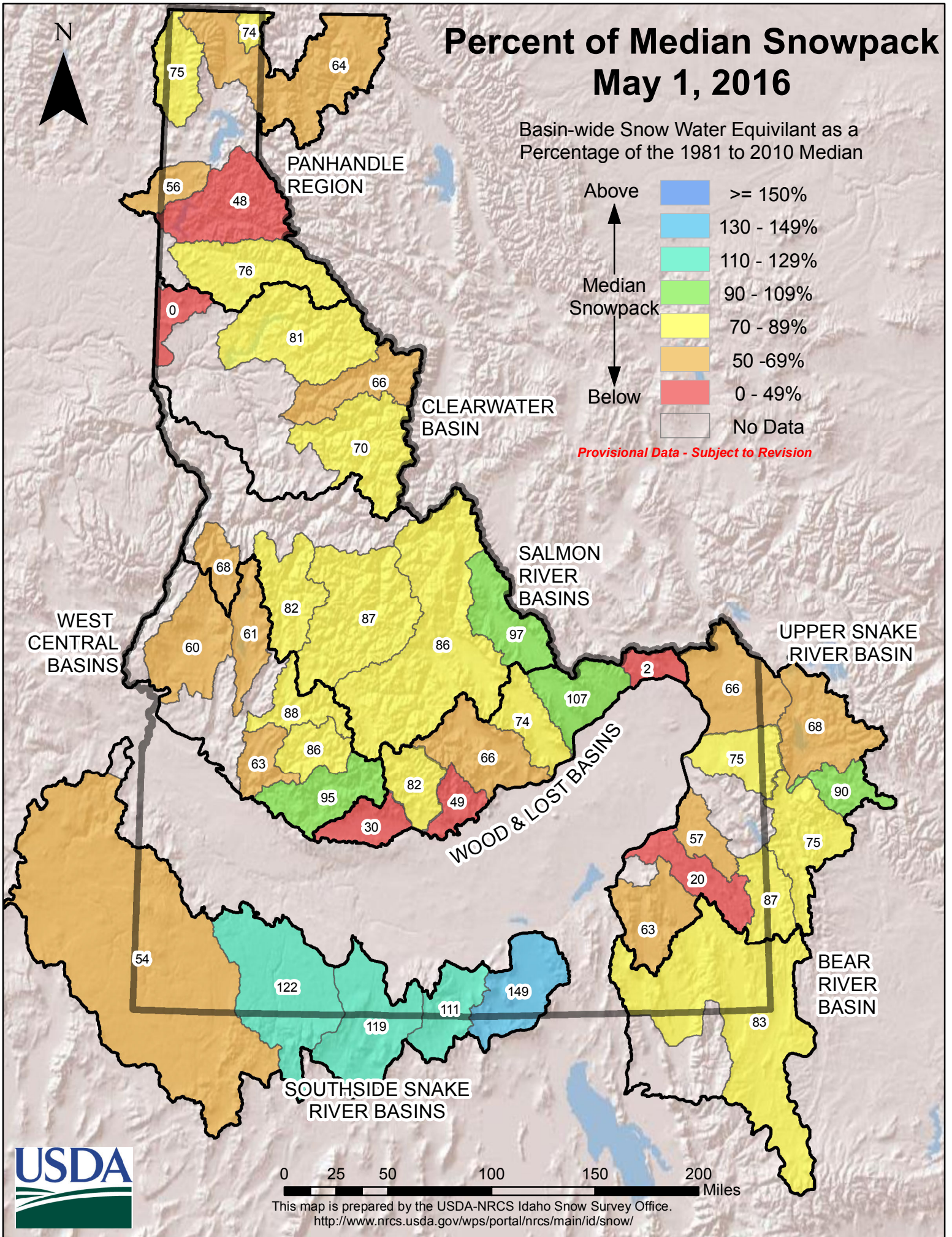


# Percent of Median Snowpack May 1, 2016

Basin-wide Snow Water Equivalent as a Percentage of the 1981 to 2010 Median



*Provisional Data - Subject to Revision*

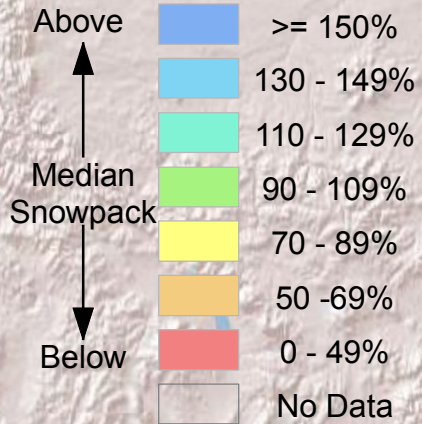


This map is prepared by the USDA-NRCS Idaho Snow Survey Office.  
<http://www.nrcs.usda.gov/wps/portal/nrcs/main/id/snow/>



# Percent of Median Snowpack June 1, 2016

Basin-wide Snow Water Equivalent as a Percentage of the 1981 to 2010 Median



*Provisional Data - Subject to Revision*

