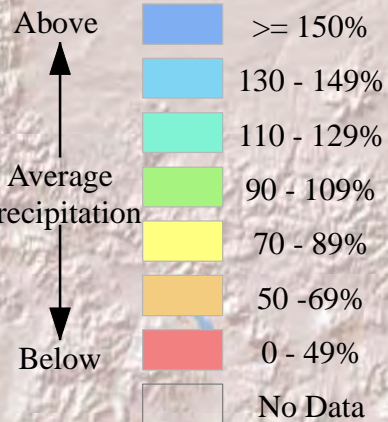
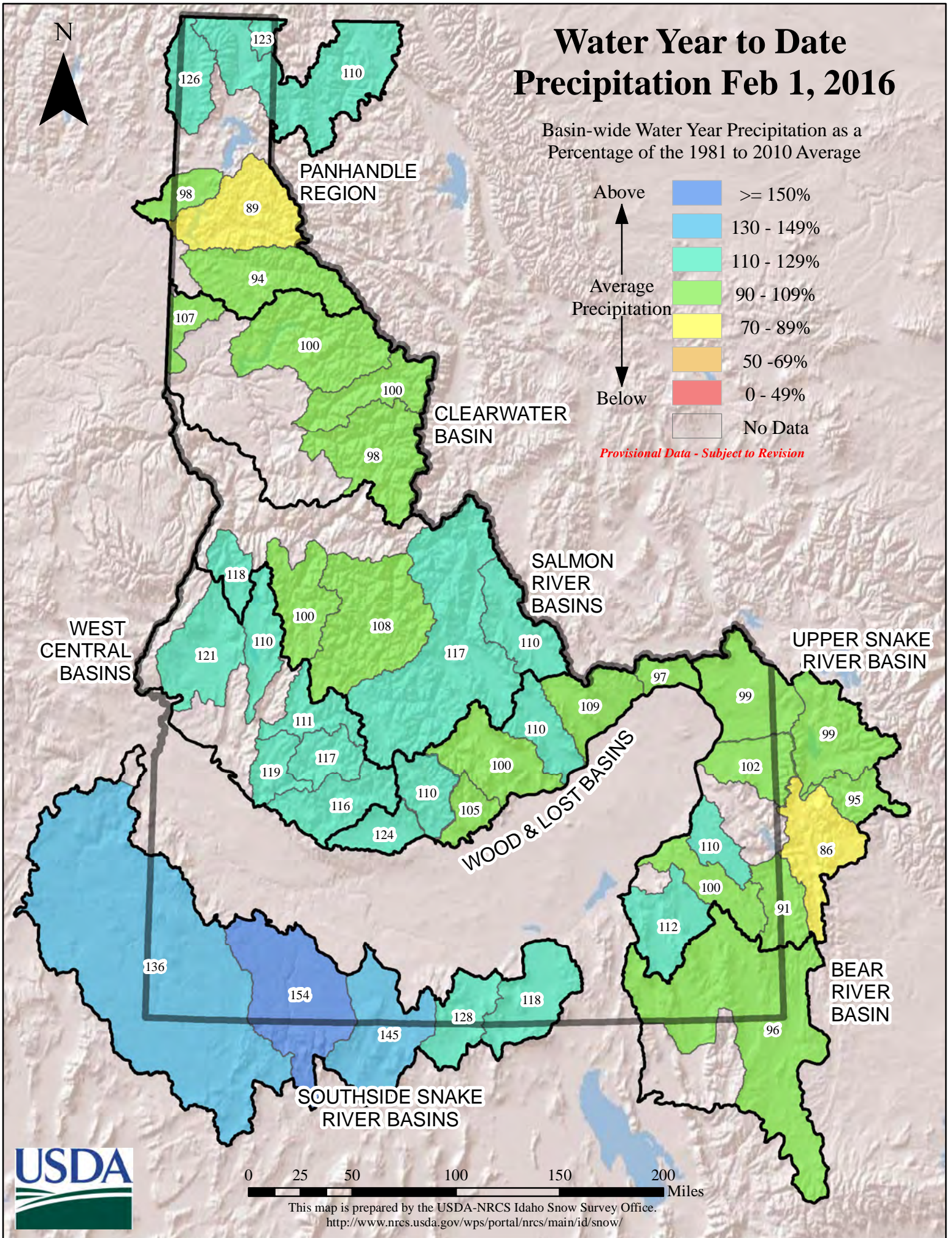


# Water Year to Date Precipitation Feb 1, 2016

Basin-wide Water Year Precipitation as a Percentage of the 1981 to 2010 Average



*Provisional Data - Subject to Revision*



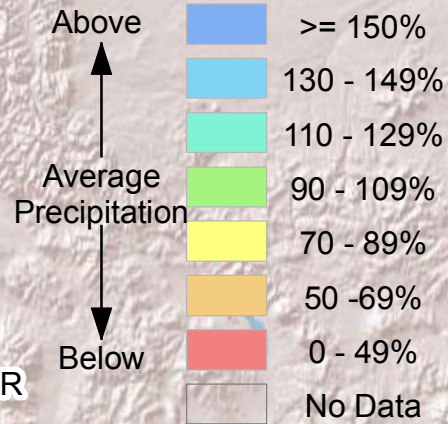
0 25 50 100 150 200 Miles

This map is prepared by the USDA-NRCS Idaho Snow Survey Office.  
<http://www.nrcs.usda.gov/wps/portal/nrcs/main/id/snow/>

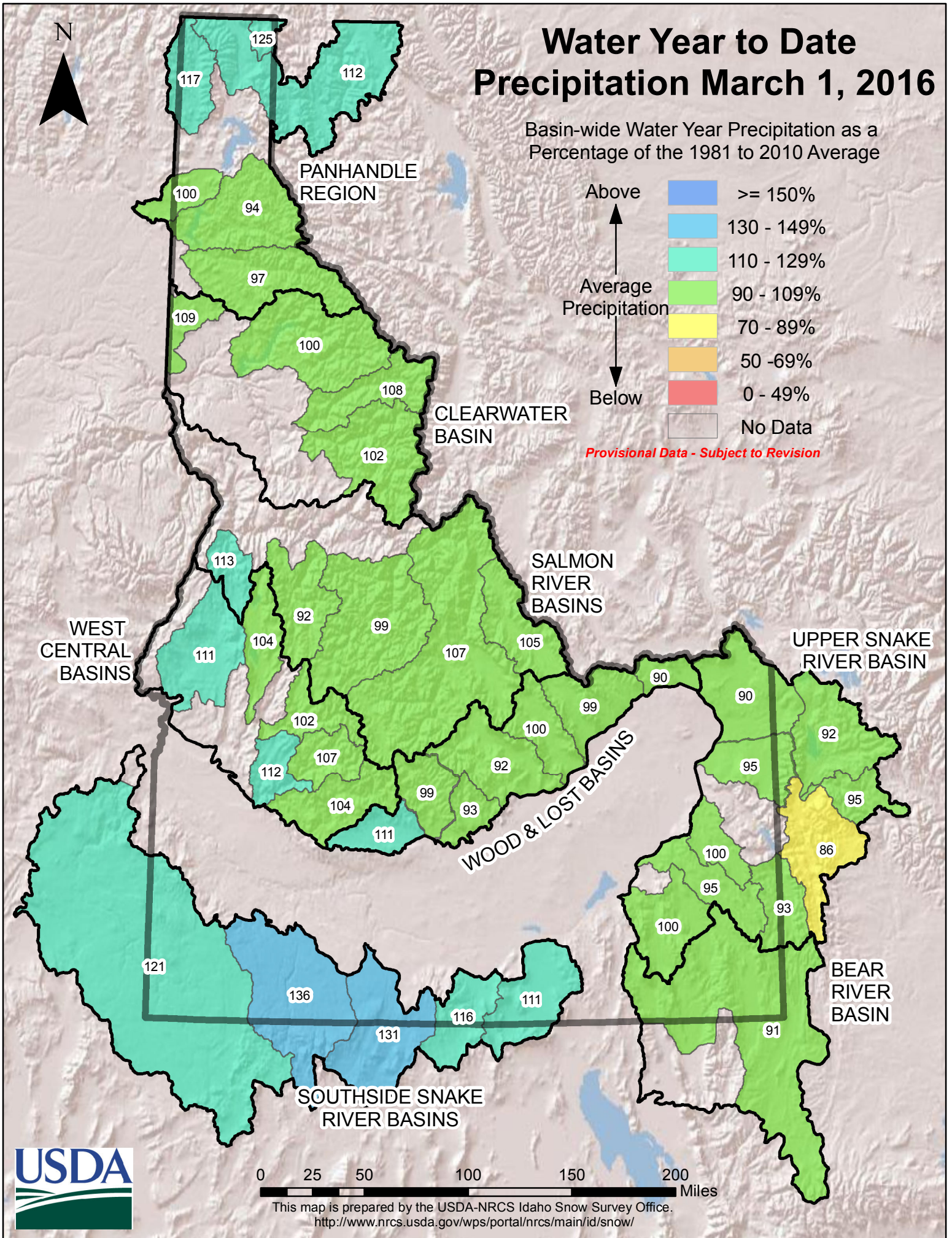


# Water Year to Date Precipitation March 1, 2016

Basin-wide Water Year Precipitation as a Percentage of the 1981 to 2010 Average



*Provisional Data - Subject to Revision*



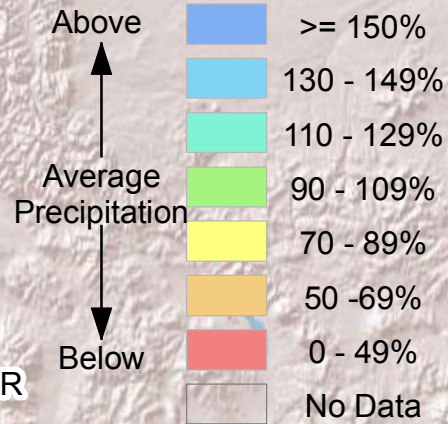
0 25 50 100 150 200 Miles

This map is prepared by the USDA-NRCS Idaho Snow Survey Office.  
<http://www.nrcs.usda.gov/wps/portal/nrcs/main/id/snow/>

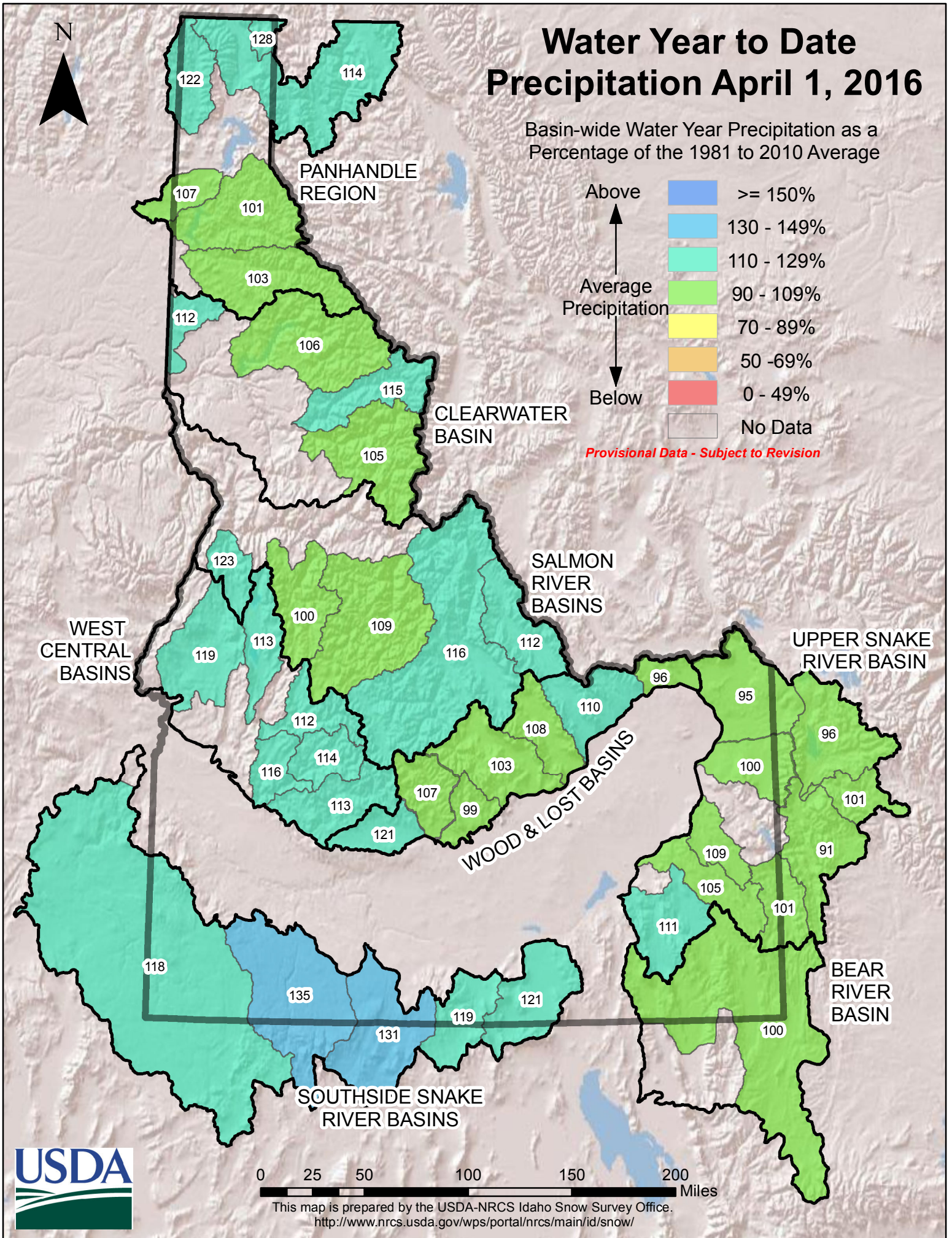


# Water Year to Date Precipitation April 1, 2016

Basin-wide Water Year Precipitation as a Percentage of the 1981 to 2010 Average



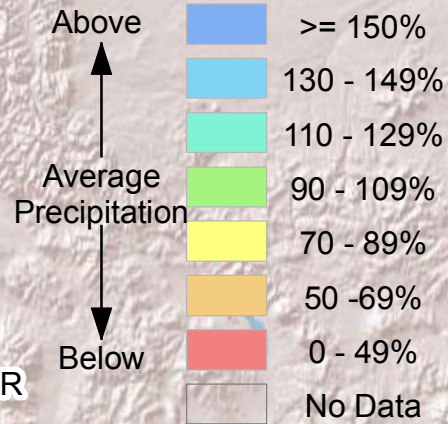
*Provisional Data - Subject to Revision*



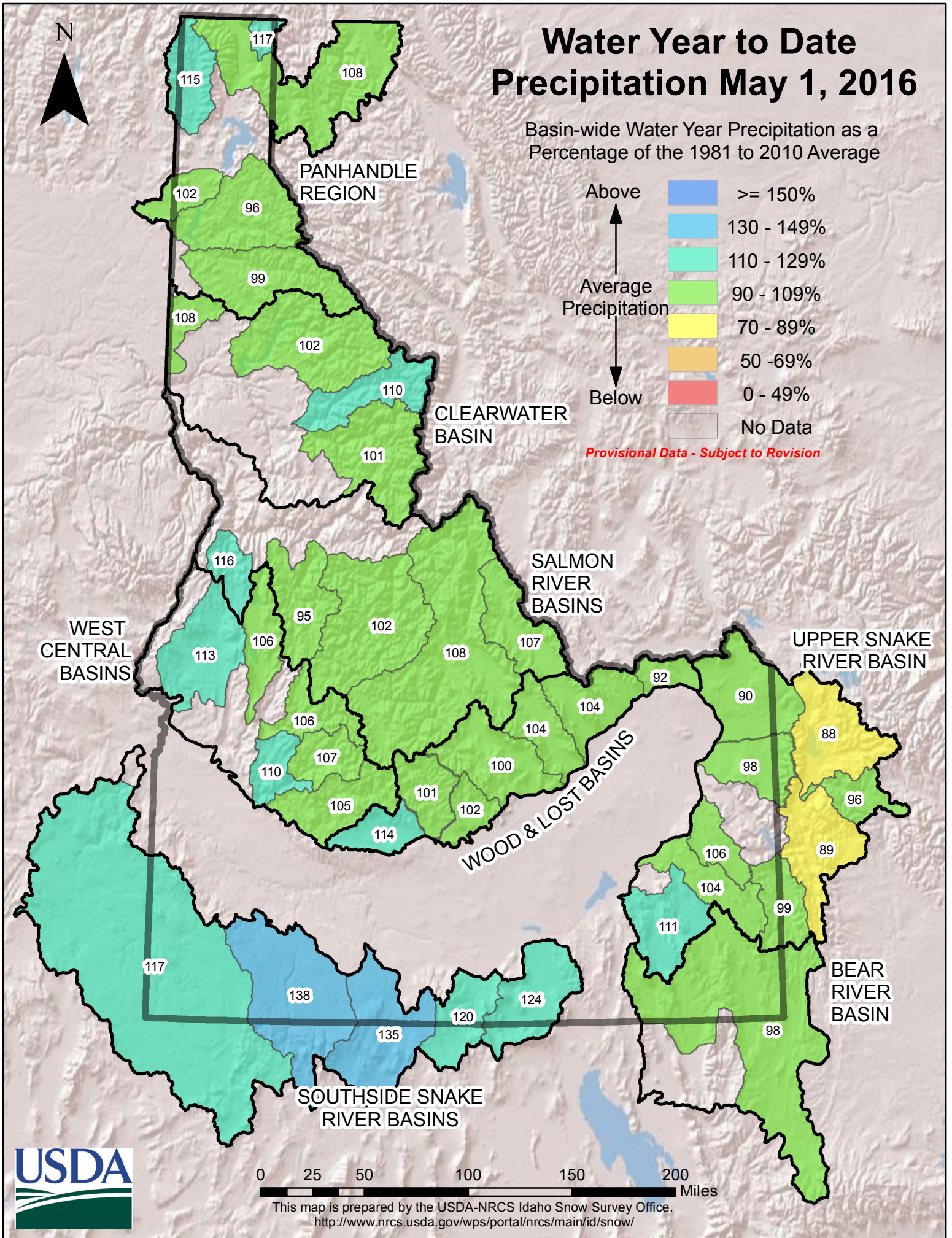


# Water Year to Date Precipitation May 1, 2016

Basin-wide Water Year Precipitation as a Percentage of the 1981 to 2010 Average



*Provisional Data - Subject to Revision*



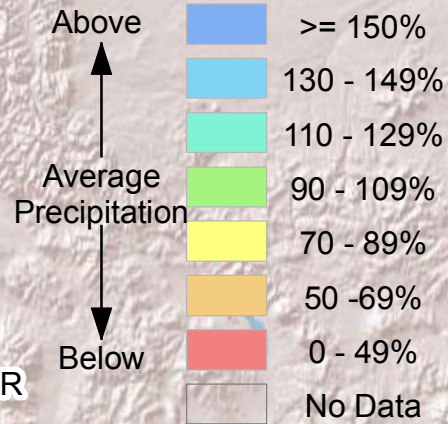
0 25 50 100 150 200 Miles

This map is prepared by the USDA-NRCS Idaho Snow Survey Office.  
<http://www.nrcs.usda.gov/wps/portal/nrcs/main/id/snow/>

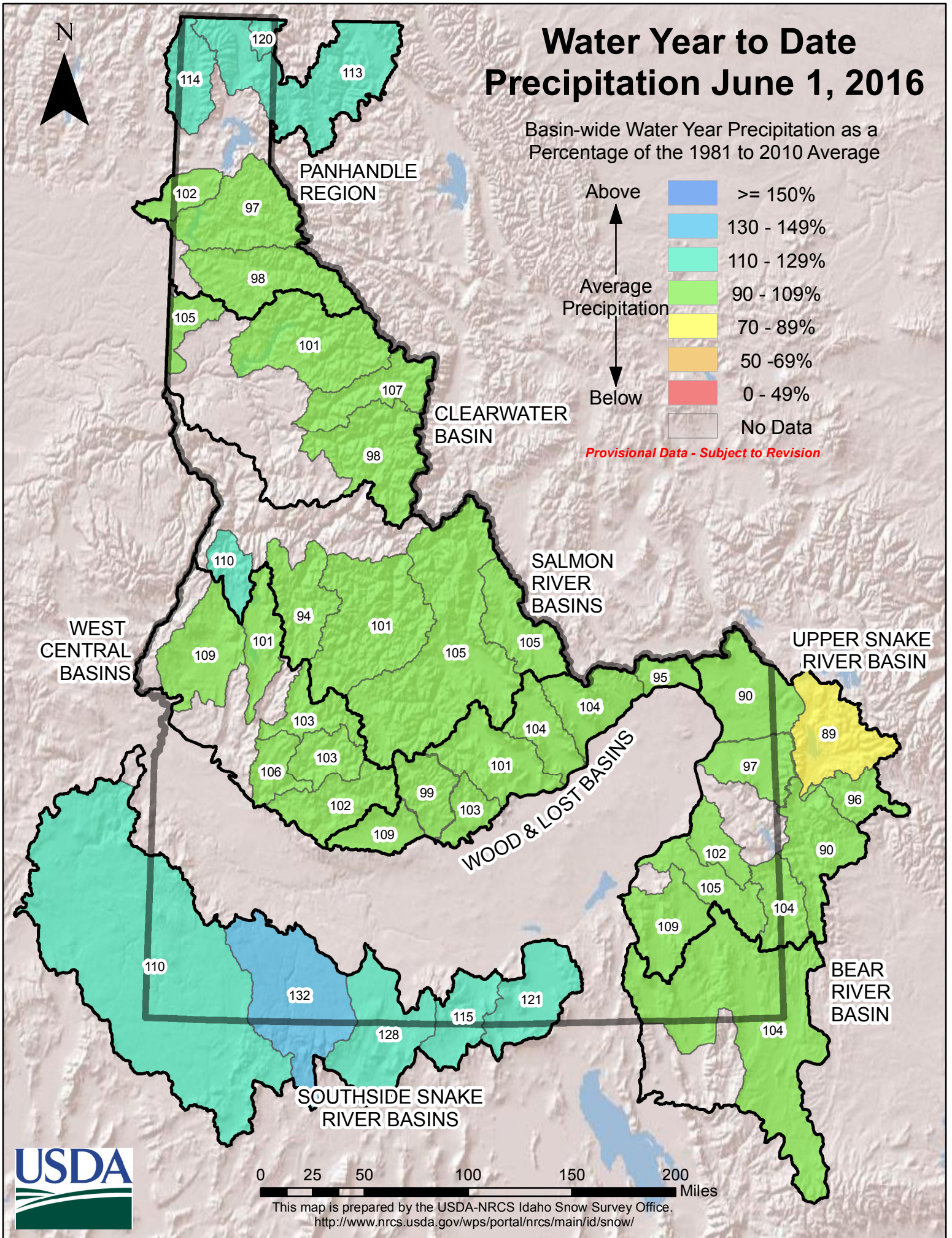


# Water Year to Date Precipitation June 1, 2016

Basin-wide Water Year Precipitation as a Percentage of the 1981 to 2010 Average



*Provisional Data - Subject to Revision*



0 25 50 100 150 200 Miles

This map is prepared by the USDA-NRCS Idaho Snow Survey Office.  
<http://www.nrcs.usda.gov/wps/portal/nrcs/main/id/snow/>