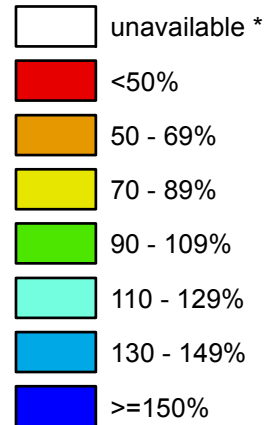


Idaho SNOTEL Water Year (Oct 1) to Date Precipitation % of Normal

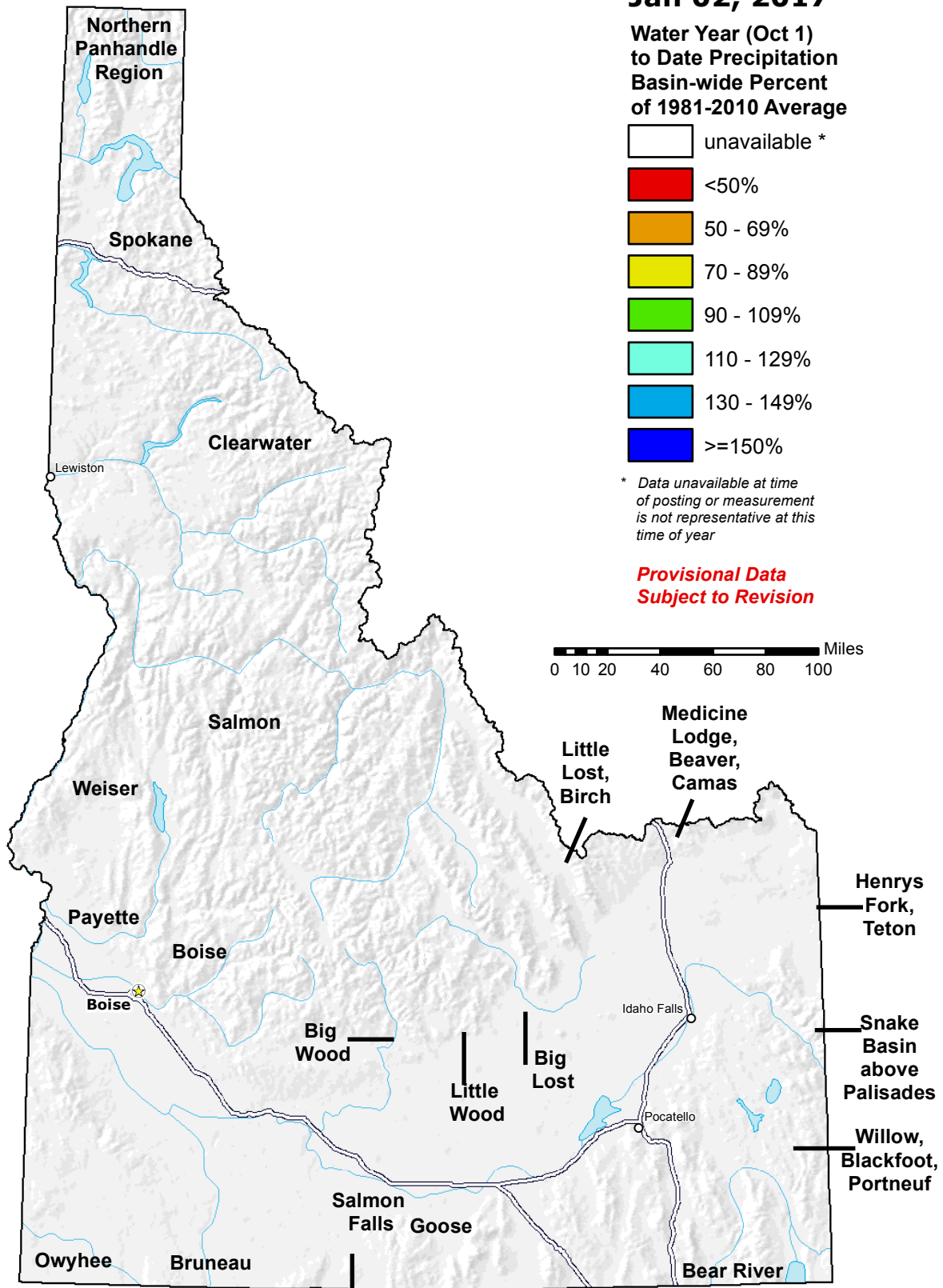
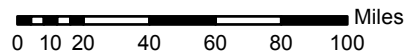
Jan 02, 2017

Water Year (Oct 1)
to Date Precipitation
Basin-wide Percent
of 1981-2010 Average



* Data unavailable at time of posting or measurement is not representative at this time of year

**Provisional Data
Subject to Revision**



The water year to date precipitation percent of normal represents the accumulated precipitation found at selected SNOTEL sites in or near the basin compared to the average value for those sites on this day. Data based on the first reading of the day (typically 00:00).

Prepared by:
USDA/NRCS National Water and Climate Center
Portland, Oregon
<http://www.wcc.nrcs.usda.gov>