

# RECLAMATION

*Managing Water in the West*

## Fontenelle Working Group Meeting

April 22, 2008



Katrina Grantz, PhD  
Upper Colorado Region  
Hydraulic Engineer  
[kgrantz@uc.usbr.gov](mailto:kgrantz@uc.usbr.gov)  
(801)524-3635



U.S. Department of the Interior  
Bureau of Reclamation

# Fontenelle Working Group Meeting

## April 2007

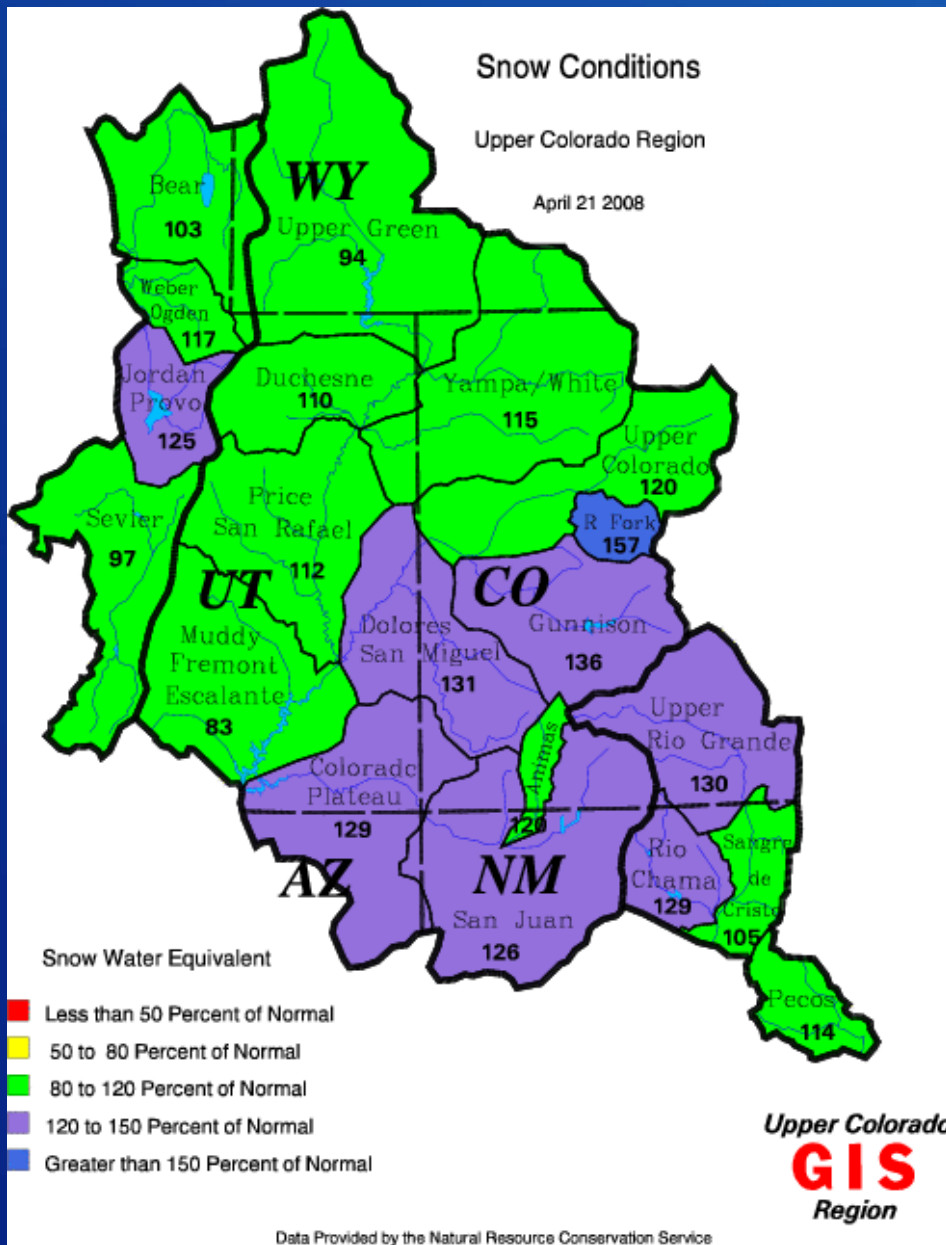
Live Storage Capacity	345,000	AF
<u>Storage on 4/20/08</u>	<u>104,500</u>	<u>AF</u>
Available Space	240,500	AF

Reservoir Elev. (Max)	6506.00	feet
<u>Elevation on 4/20/08</u>	<u>6466.42</u>	<u>feet</u>
Elevation below (Max)	39.58	feet

10 Day Average Inflow	995	cfs
Current Release on 4/20/08	703	cfs

RECLAMATION

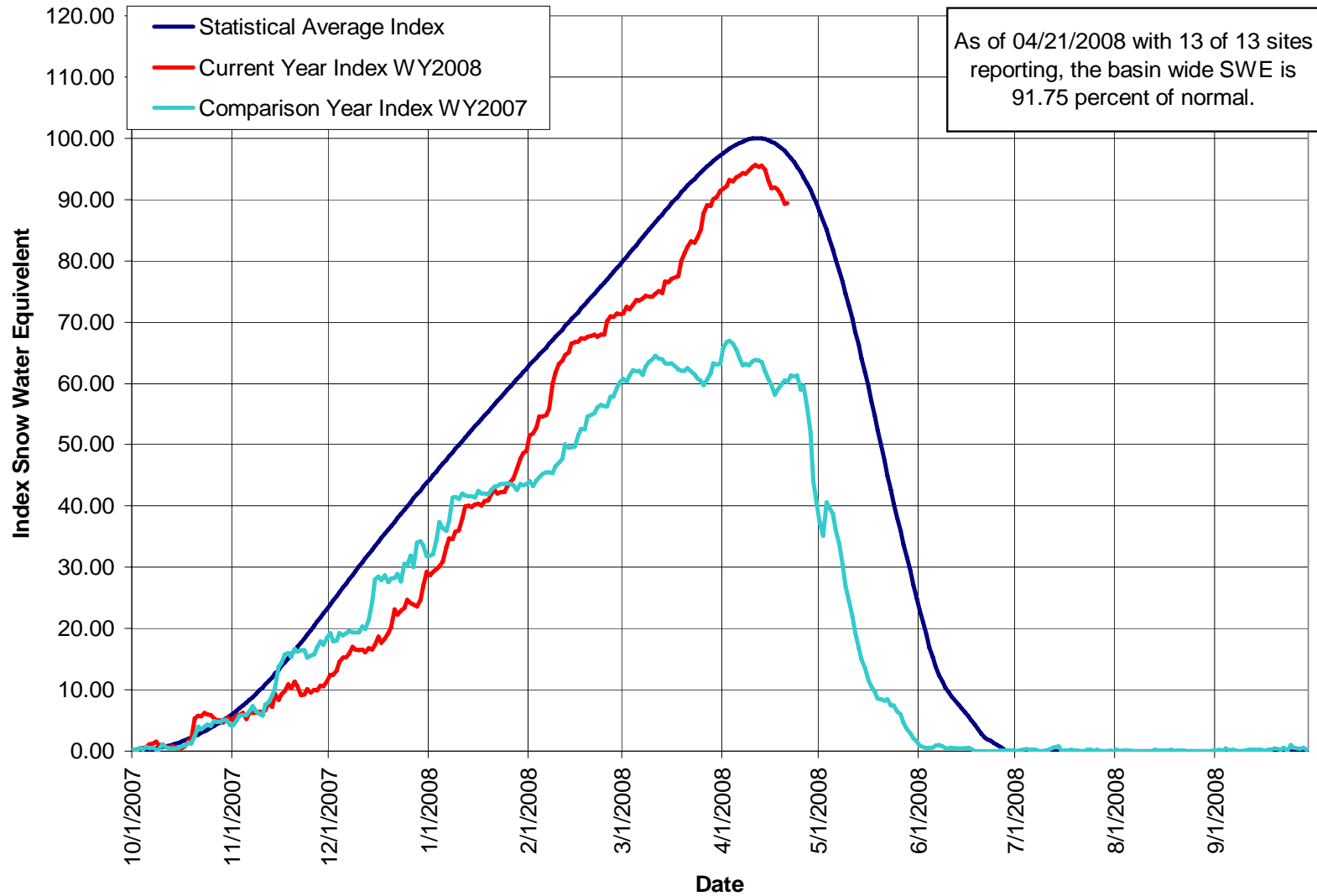
# Snow Water Equivalent (SWE) Current Conditions



# RECLAMATION

# Upper Green River Basin Snotel Tracking

## Aggregate of 13 Snotel Sites above Fontenelle Reservoir



# U.S. Drought Monitor

## West

April 15, 2008

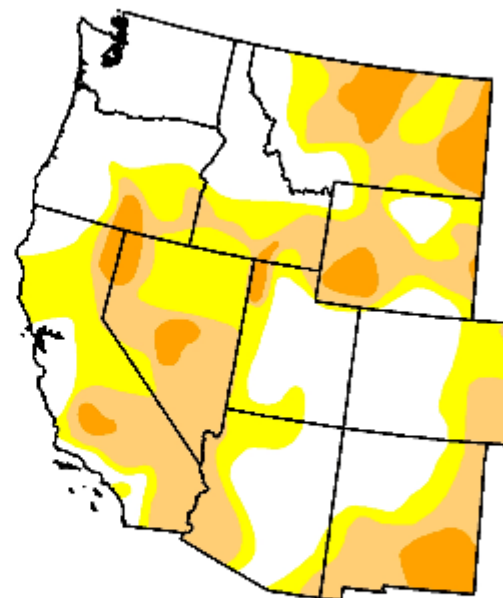
Valid 7 a.m. EST

Drought Conditions (Percent Area)

	None	D0-D4	D1-D4	D2-D4	D3-D4	D4
Current	40.5	59.5	35.0	8.4	0.0	0.0
Last Week (04/08/2008 map)	42.4	57.6	33.7	5.4	0.0	0.0
3 Months Ago (01/22/2008 map)	28.7	71.3	51.8	26.2	0.0	0.0
Start of Calendar Year (01/01/2008 map)	26.3	73.7	54.7	33.1	2.7	0.0
Start of Water Year (10/02/2007 map)	22.0	78.0	62.3	44.7	12.4	0.0
One Year Ago (04/17/2007 map)	25.5	74.5	54.7	23.4	6.9	0.0

Intensity:

- D0 Abnormally Dry
- D1 Drought - Moderate
- D2 Drought - Severe
- D3 Drought - Extreme
- D4 Drought - Exceptional



The Drought Monitor focuses on broad-scale conditions. Local conditions may vary. See accompanying text summary for forecast statements

<http://drought.unl.edu/dm>



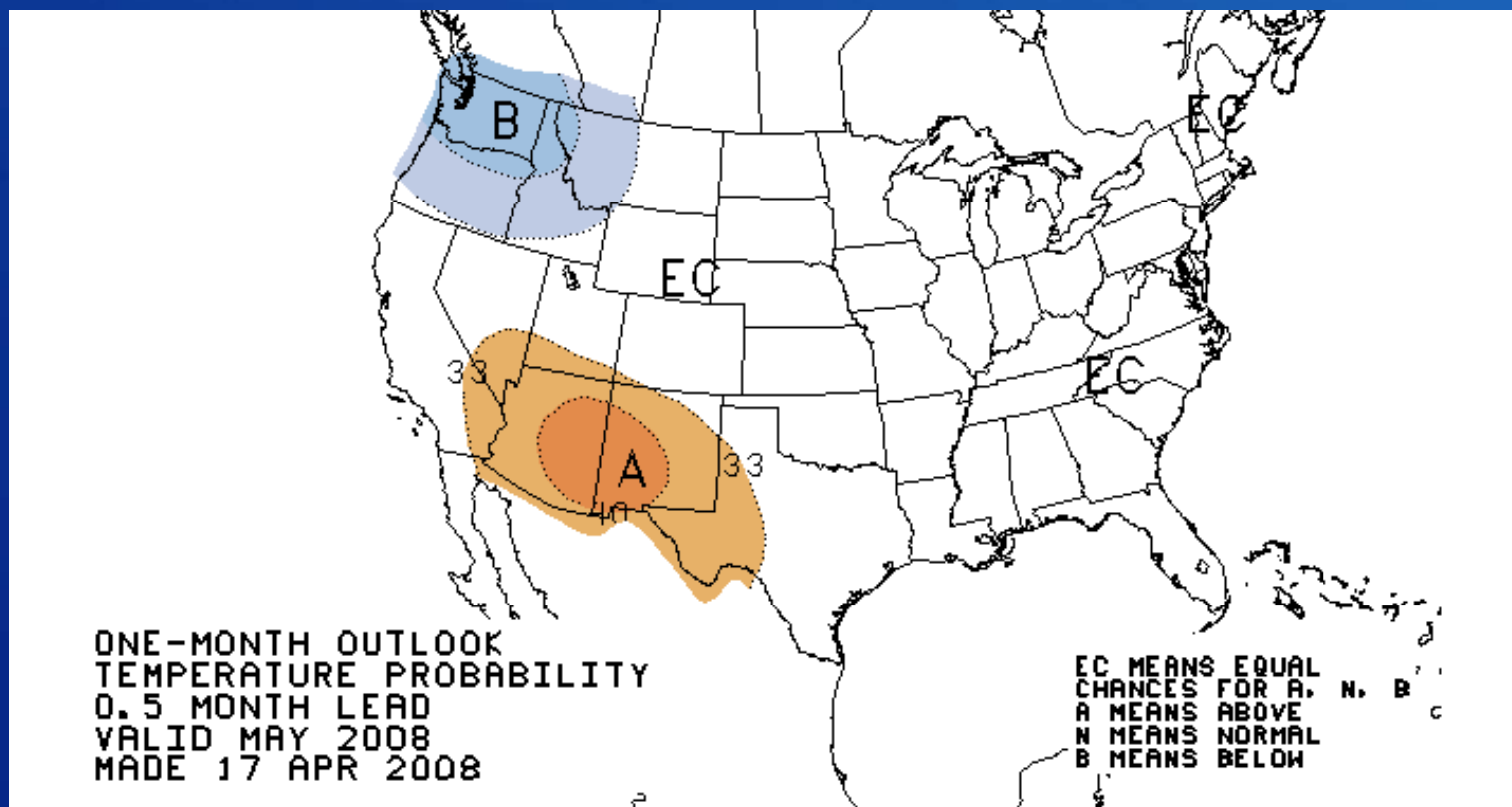
Released Thursday, April 17, 2008

Author: J. Lawrimore/L. Love-Brotak, NOAA/NESDIS/NCDC

# RECLAMATION

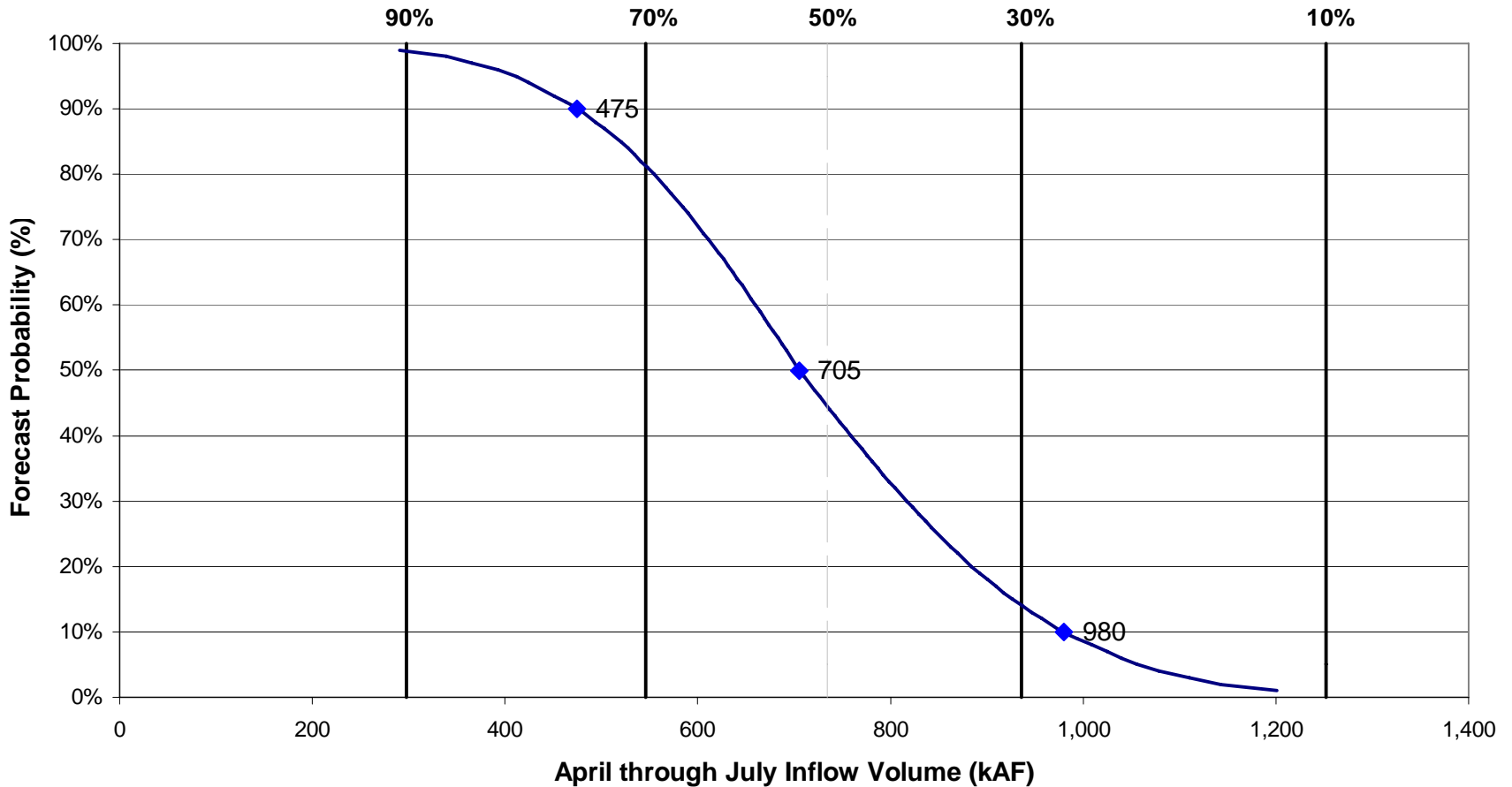
# Climate Prediction Center

## 30 Day Temperature Outlook



# RECLAMATION

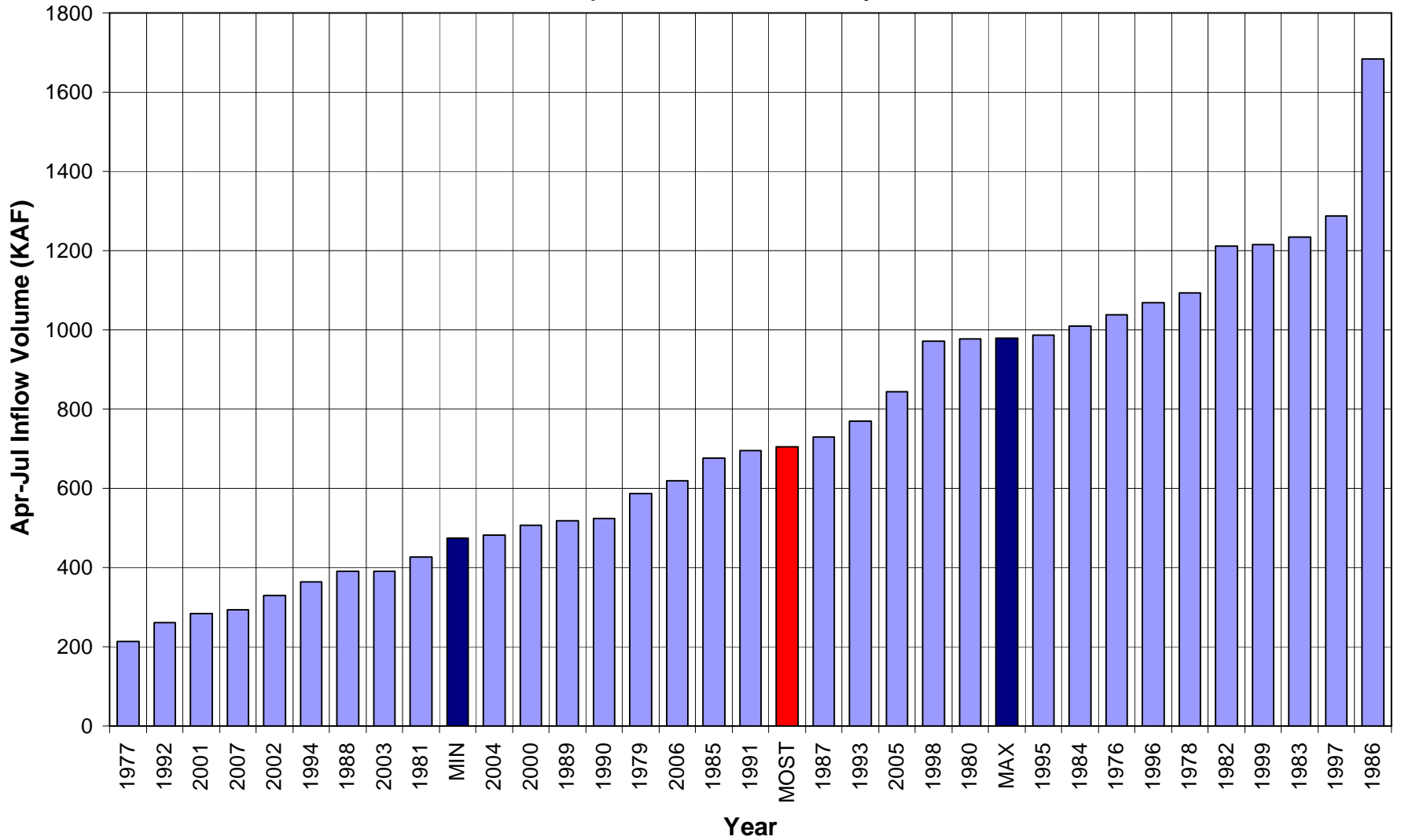
**Fontenelle Reservoir**  
**April - July Forecasted Inflow (April Official Forecast)**  
Related to Exceedance Percentages for Historic Period (1976-2005)



◆ April Forecast — Forecast Probability

# Fontenelle Forecast 2008

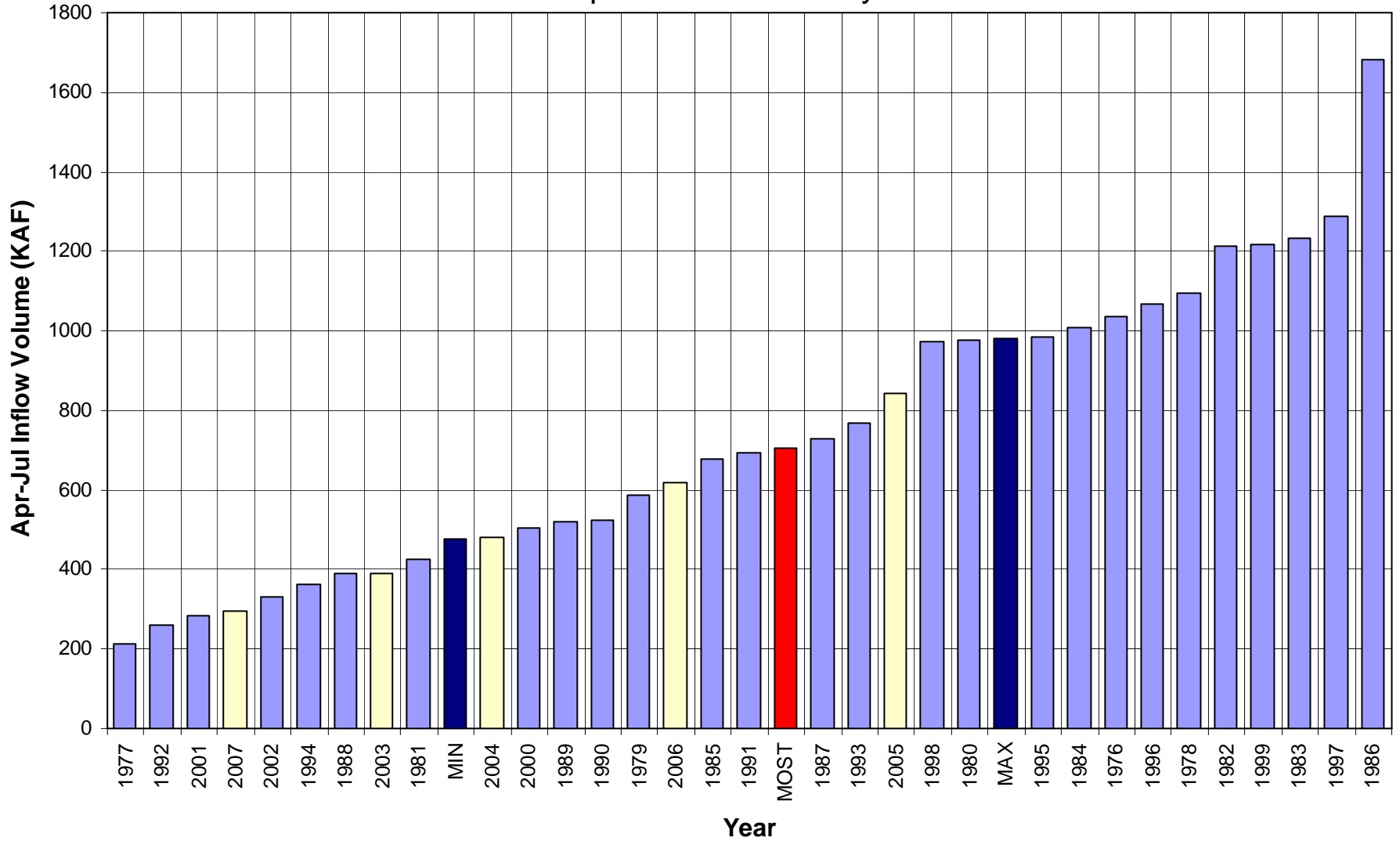
## Comparison with History





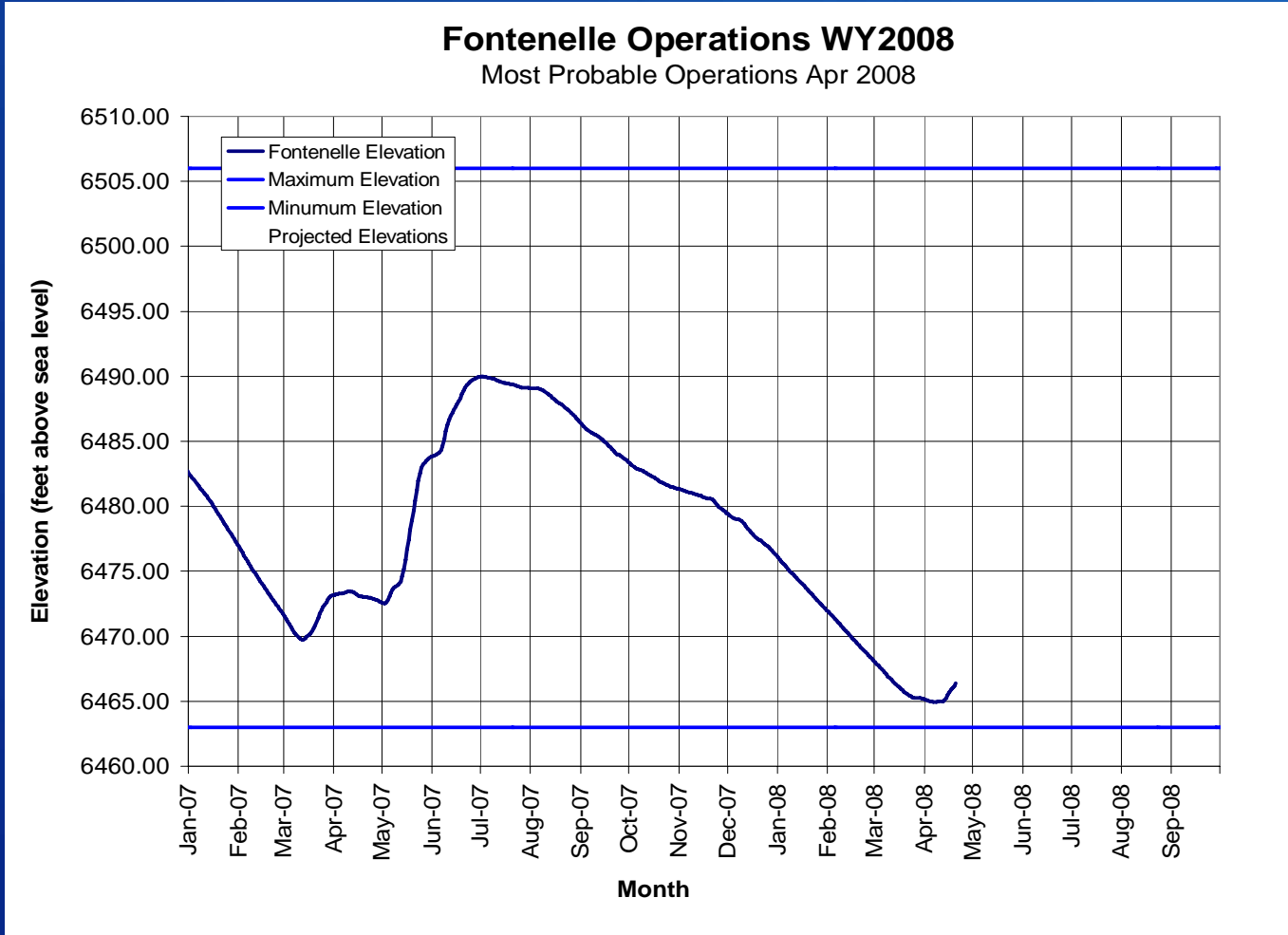
# Fontenelle Forecast 2008

## Comparison with History



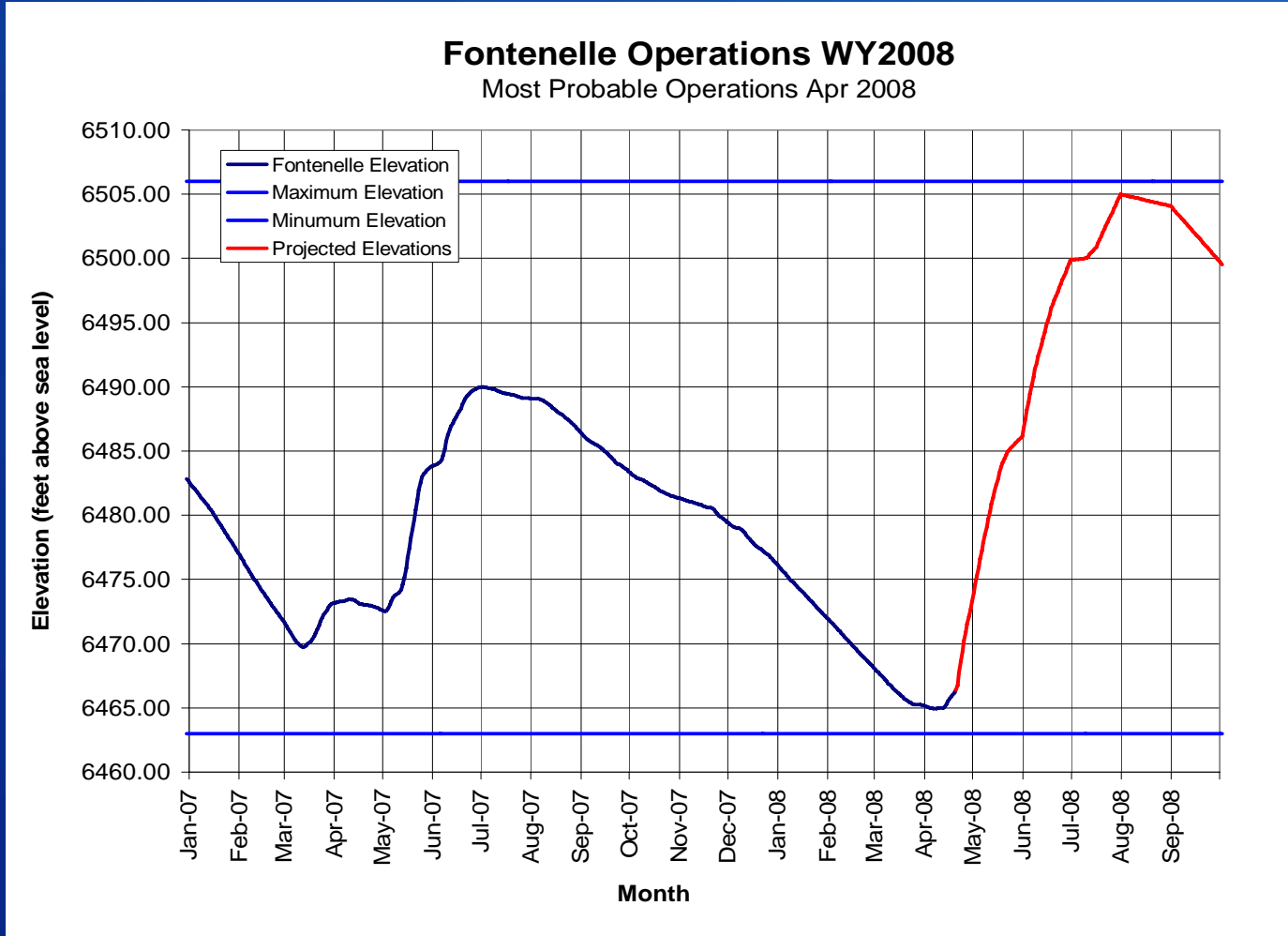
# Fontenelle Working Group Meeting

## April 2008



# Fontenelle Working Group Meeting

## April 2008

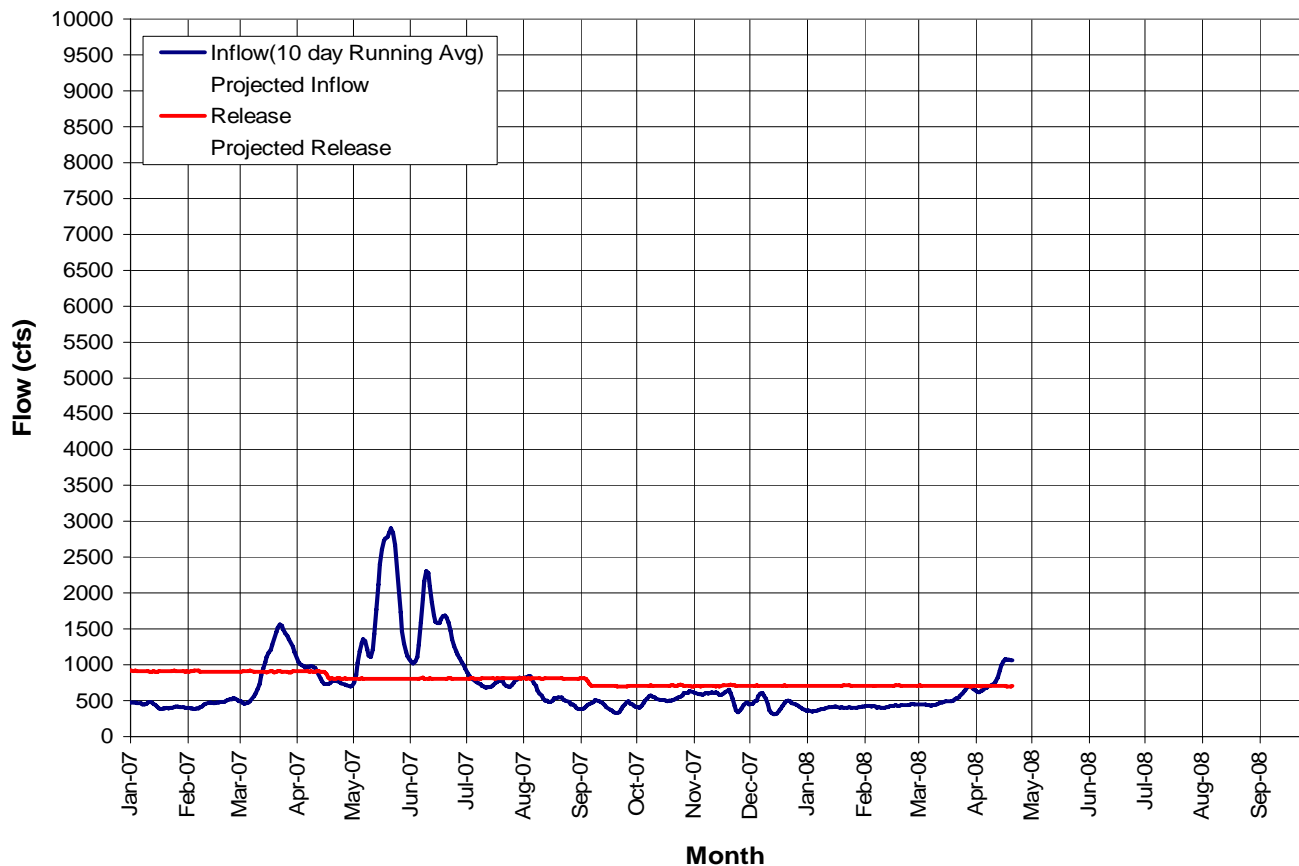


# Fontenelle Working Group Meeting

## April 2008

### Fontenelle Operations WY2007,2008

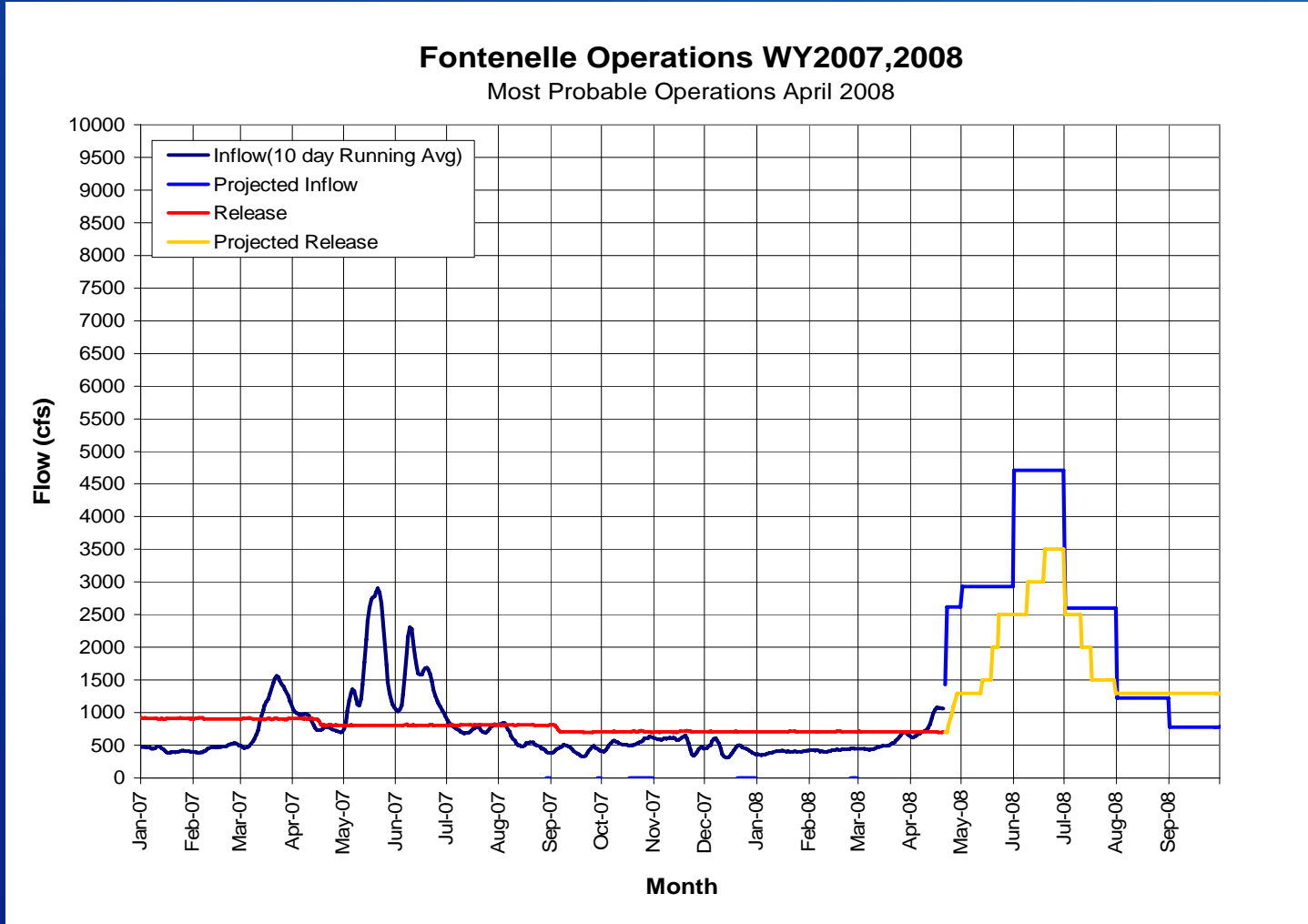
Most Probable Operations April 2008



# RECLAMATION

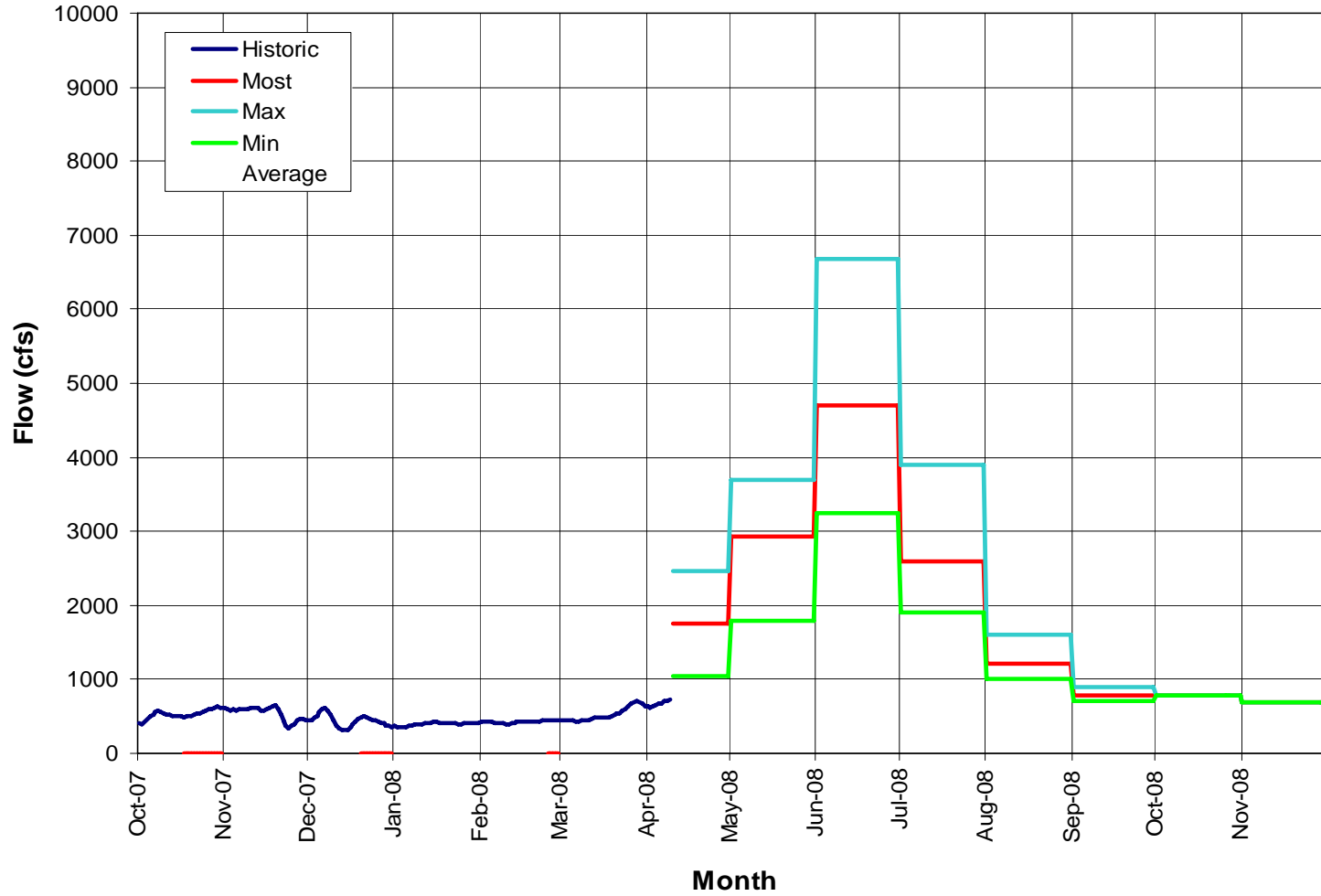
# Fontenelle Working Group Meeting

## April 2008



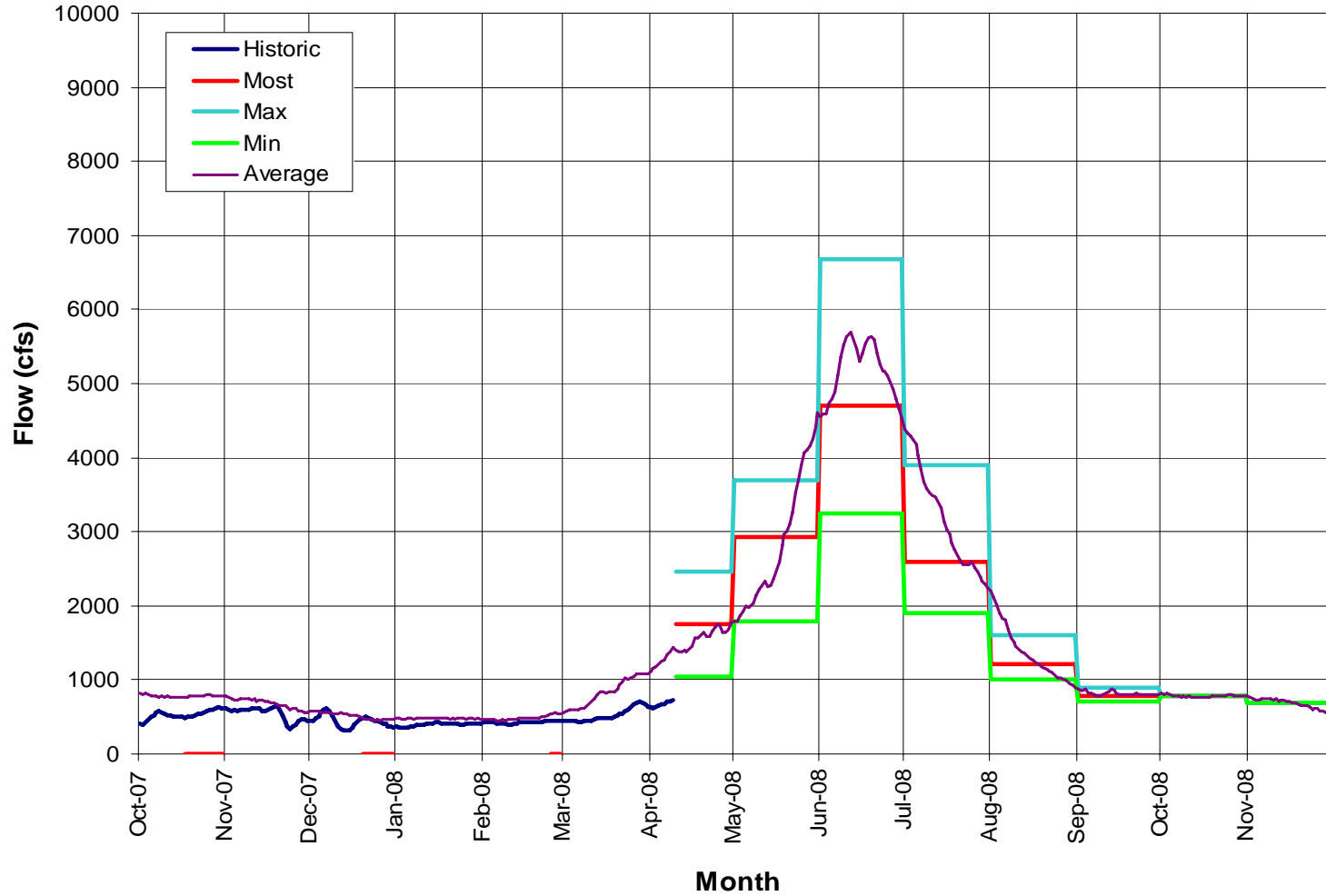
# Fontenelle Reservoir 2008 April-July Inflow Scenarios

as of 4/11/2008



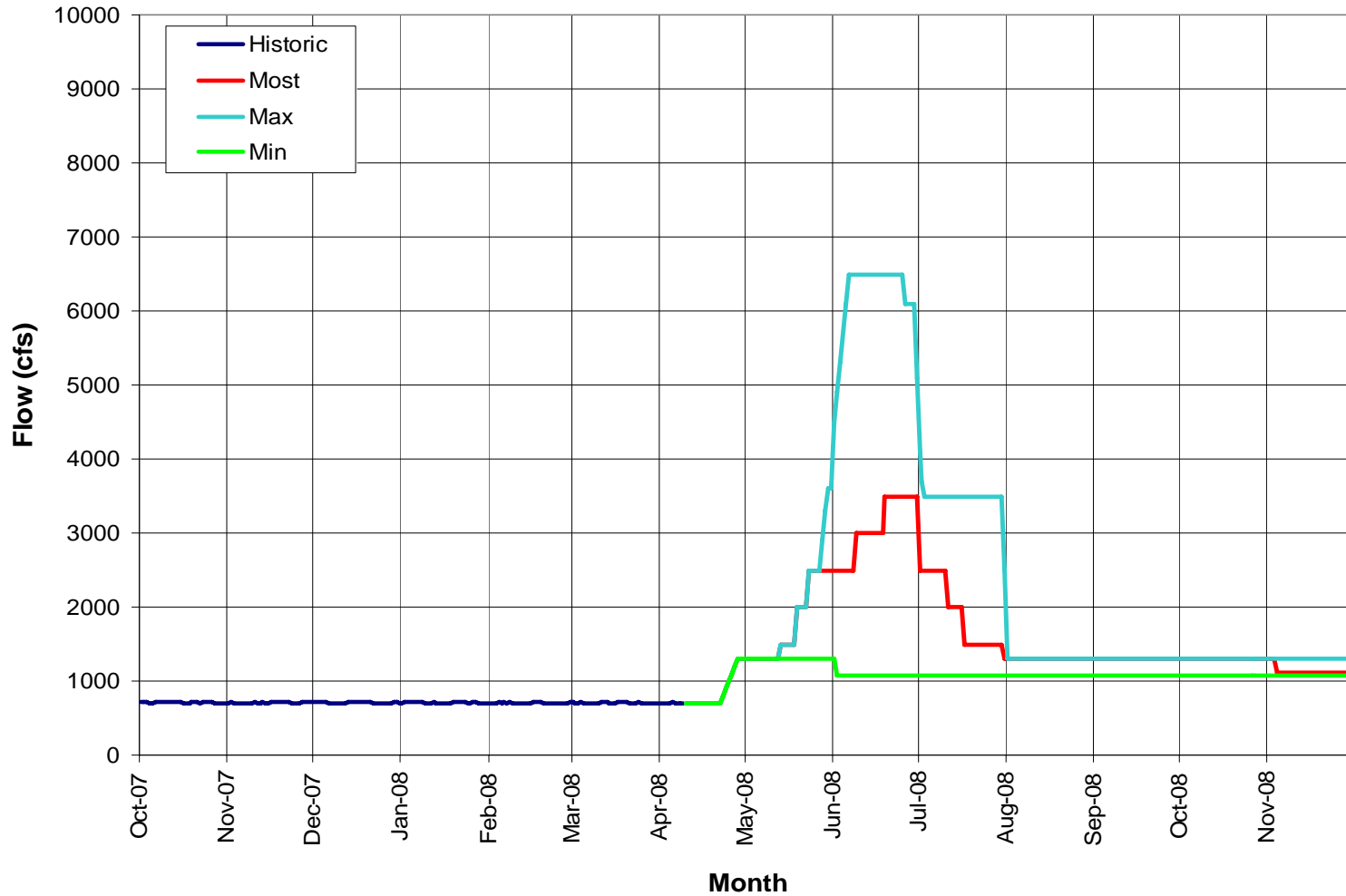
# Fontenelle Reservoir 2008 April-July Inflow Scenarios

as of 4/11/2008



# Fontenelle Reservoir 2008 April-July Release Scenarios

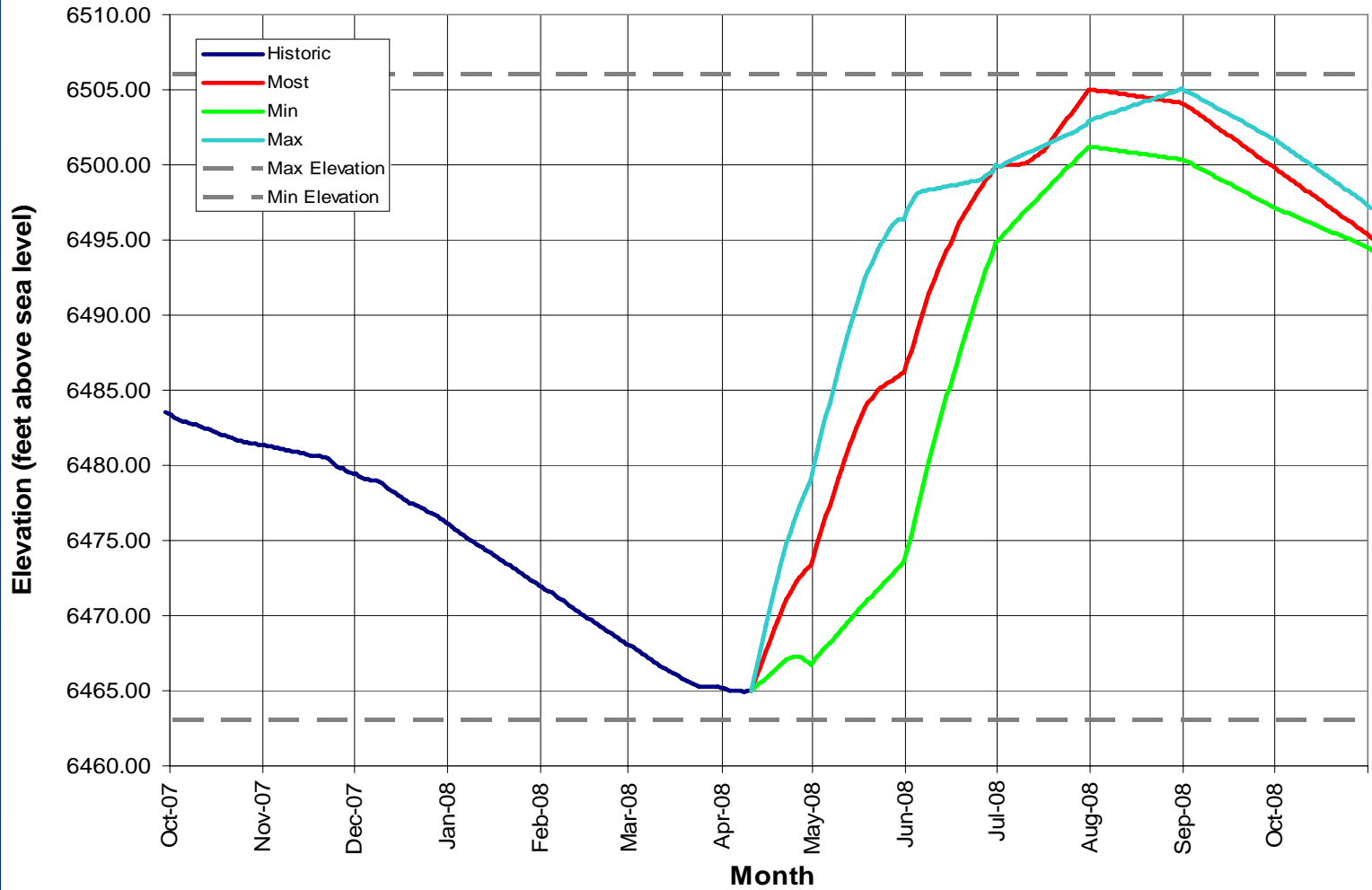
as of 4/11/2008





# Fontenelle Reservoir 2008 April-July Elevations

as of 4/11/08



# Fontenelle Working Group Meeting April 2008



RECLAMATION