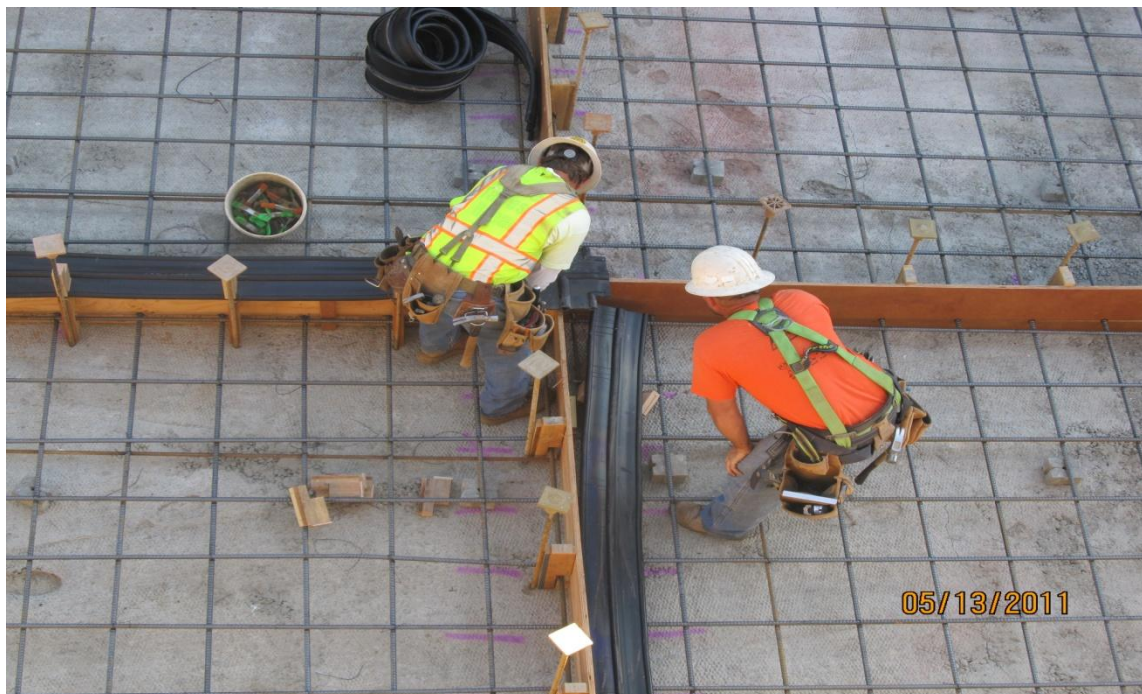


May 2011 Construction Photos



Balfour Beatty placing concrete for pumping plant sump slab.



West Bay Builder's carpenters installing waterstop material for downstream canal structural concrete.

May 2011 Construction Photos



West Bay Builder's crane lowering reinforcing material for downstream canal structural concrete.



West Bay Builders subcontractor Meyers working on east bank slope protection.

May 2011 Construction Photos



Balfour Beatty carpenters installing wall forms for the wing walls of the pumping plant.



West Bay Builders subcontractor CMC Rebar installing rebar for downstream canal structural concrete.

May 2011 Construction Photos



Balfour Beatty pumping plant overview, looking towards the Sacramento River.



Balfour Beatty pumping plant back wall formwork.

May 2011 Construction Photos



West Bay Builders downstream structural concrete placed in interval bays.



West Bay Builders subcontractor MD Site Grading building access road across Red Bank Creek.