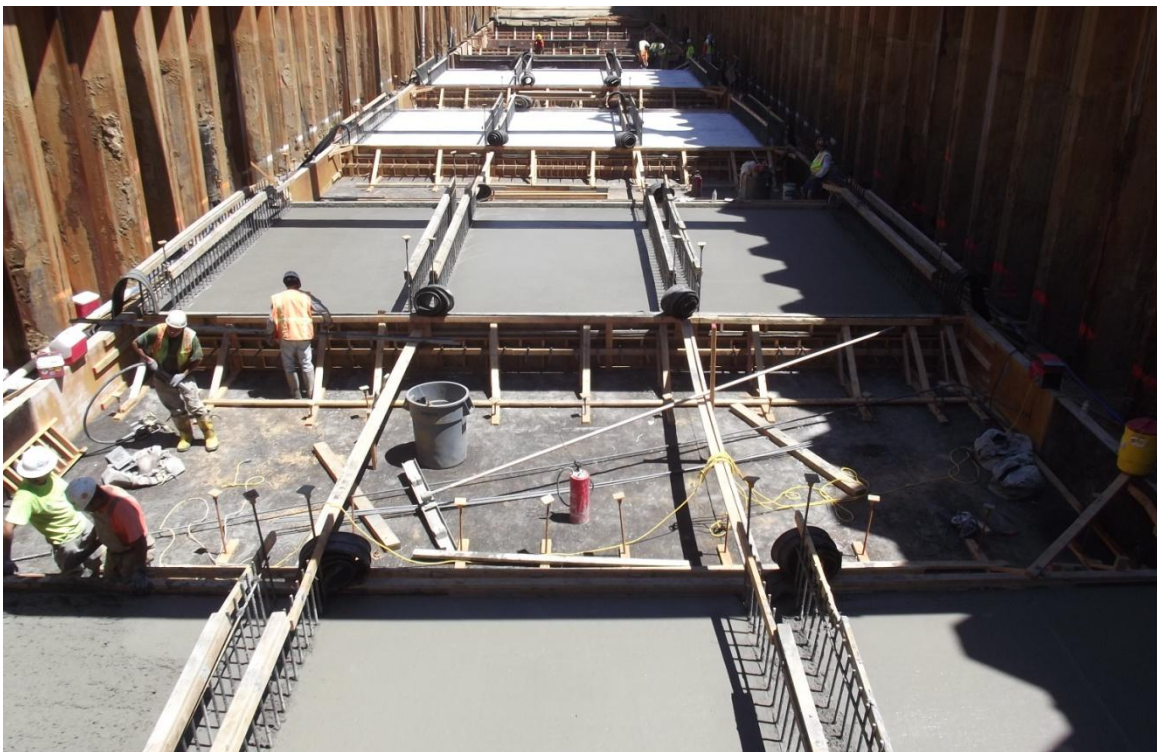


## July 2011 Construction Photos



West Bay Builders subcontractor Meyers installing geo textile material over gravel fill in the Siphon.



West Bay Builders subcontractor Landavazo placing concrete for the Siphon Phase II slab.

## July 2011 Construction Photos



West Bay Builders carpenter crew installing formwork for Siphon Phase II concrete slab.



Balfour Beatty backfill operation behind discharge wall in forebay.

## July 2011 Construction Photos



Balfour Beatty Pumping Plant overview, looking towards the forebay bank.



Bridge constructed by West Bay Builders crossing Red Bank Creek

# July 2011 Construction Photos



West Bay Builders' excavator digging at Upstream Canal.



West Bay Builders concrete pump truck setting up for siphon placement.