

August 2011 Construction Photos

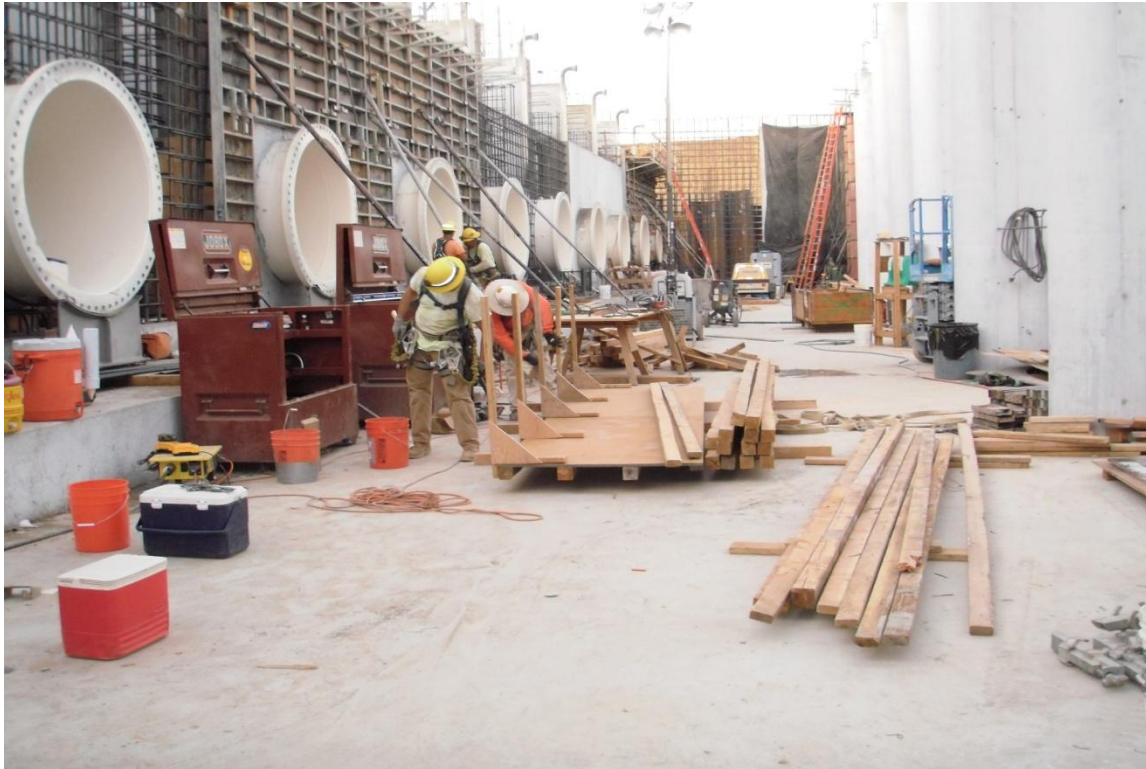


West Bay Builders crew moving wall forms to next bay.



West Bay Builders subcontractor Meyers using excavator to dig out upstream canal.

August 2011 Construction Photos



Balfour Beatty crew working in afterbay near the 84" discharge pipe embeds.



Balfour Beatty placing concrete in 4 afterbay slabs.

August 2011 Construction Photos



West Bay Builders subcontractor Meyers excavating ramp at upstream canal.

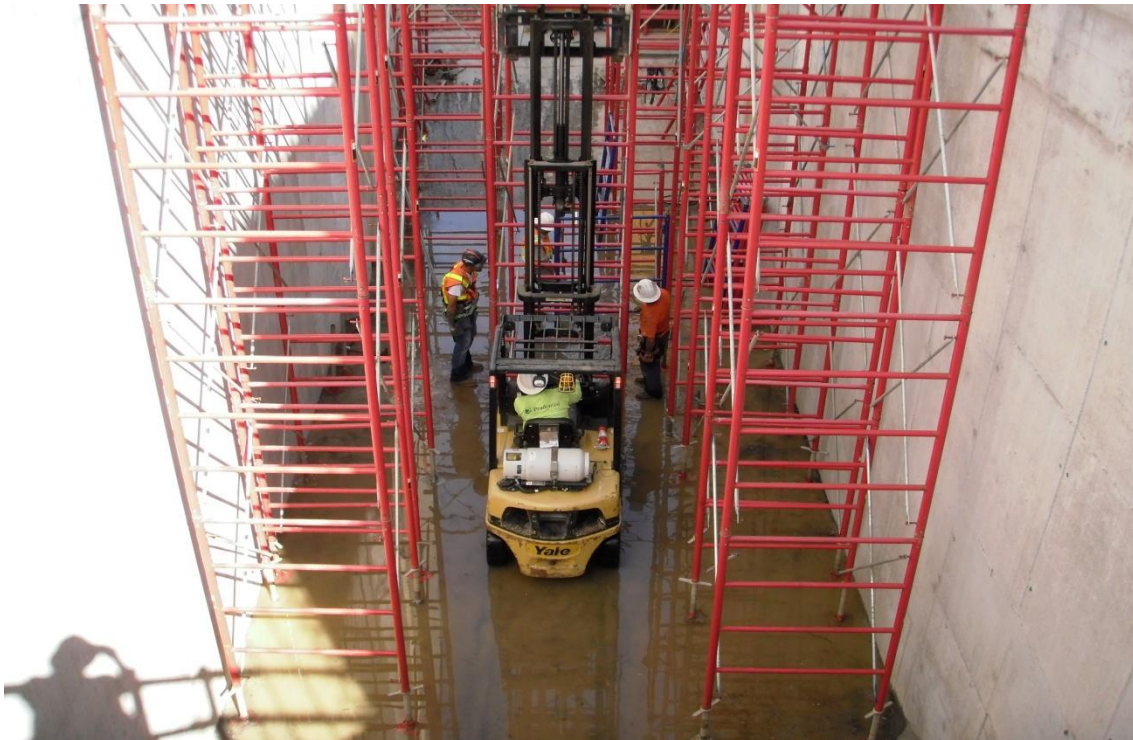


West Bay Builders performing wall placements.

August 2011 Construction Photos



Balfour Beatty workers setting discharge pipe wall embeds into place.



Balfour Beatty subcontractor Upright Shoring installing towers between walls in bay.

August 2011 Construction Photos



84-inch pumps #2 and #3 delivered to Balfour Beatty Infrastructure and set in storage.



Balfour Beatty placing concrete on discharge wall with 2 pipe embeds.