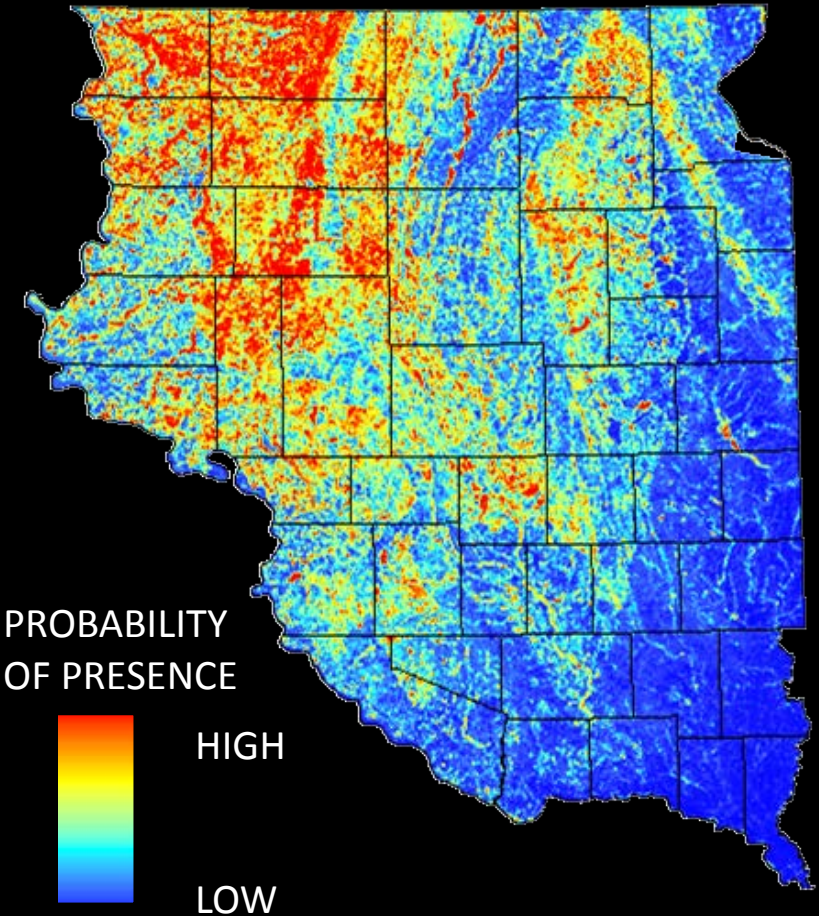




U.S. Fish and Wildlife Service

SHC and Surrogate Species: A Transformational U.S. Fish and Wildlife Service

- A Transformational FWS
- SHC as the primary tool
- Will Surrogate Approach work?
- What can we learn and apply?
- It's about delivery – scale is important.





U.S. Fish and Wildlife Service

Conservation In Transition

During the last decade there has been a science renaissance in the Service - I want to accelerate it.



The FWS must work together to understand the challenges and take action to overcome these challenge.

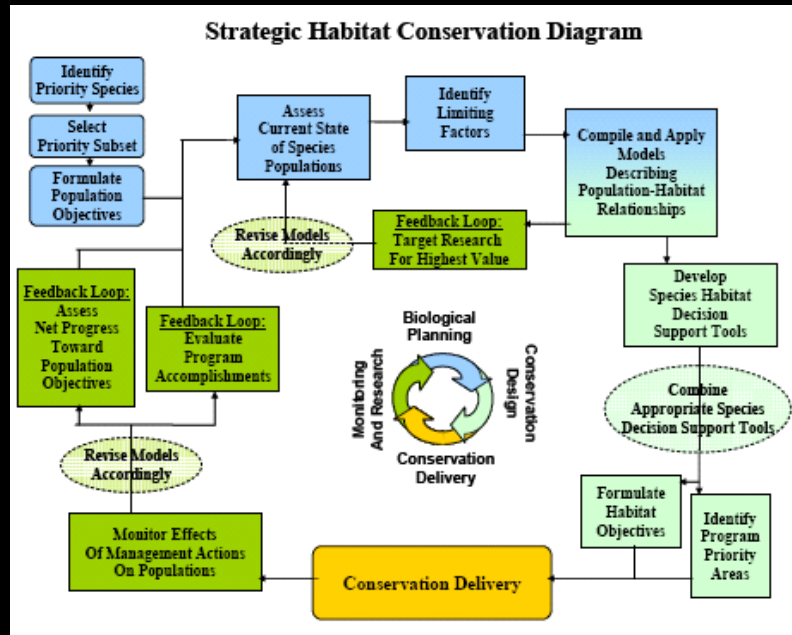
We have to move from being a science-based organization to being a science-driven organization.

We need to be one-service known for our accomplishments not just a confederation of allied Programs

We must put our work in the context of landscape sustainability...



Strategic Habitat Conservation



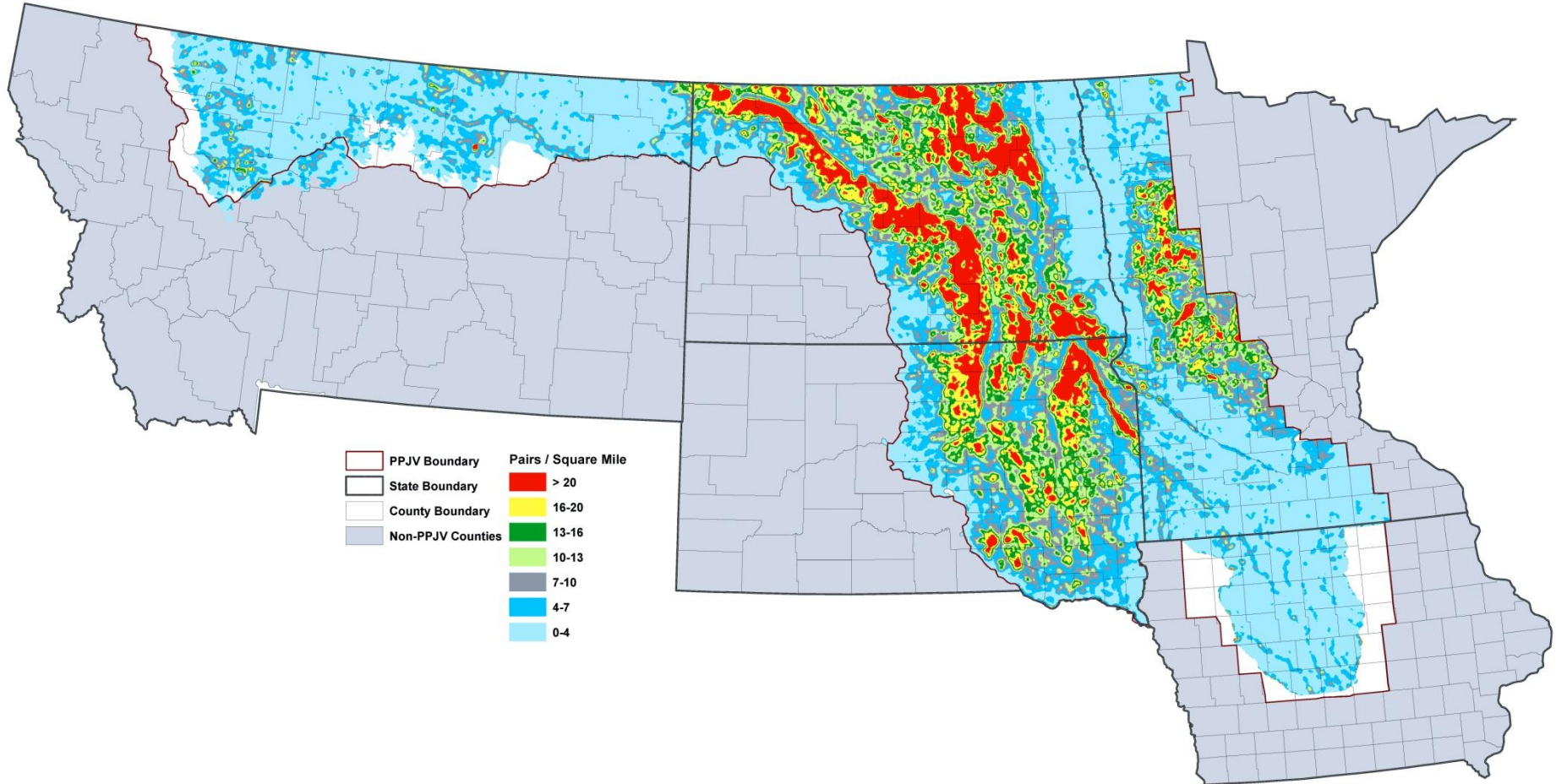
- Conservation Delivery - It's about implementation
- Identification of priority species
- Focus on treatments that address limiting factors

Did we go wrong? There is a need to institutionalize logic, critical thinking, and rigor, not a particular method. It's decision and priority driven.

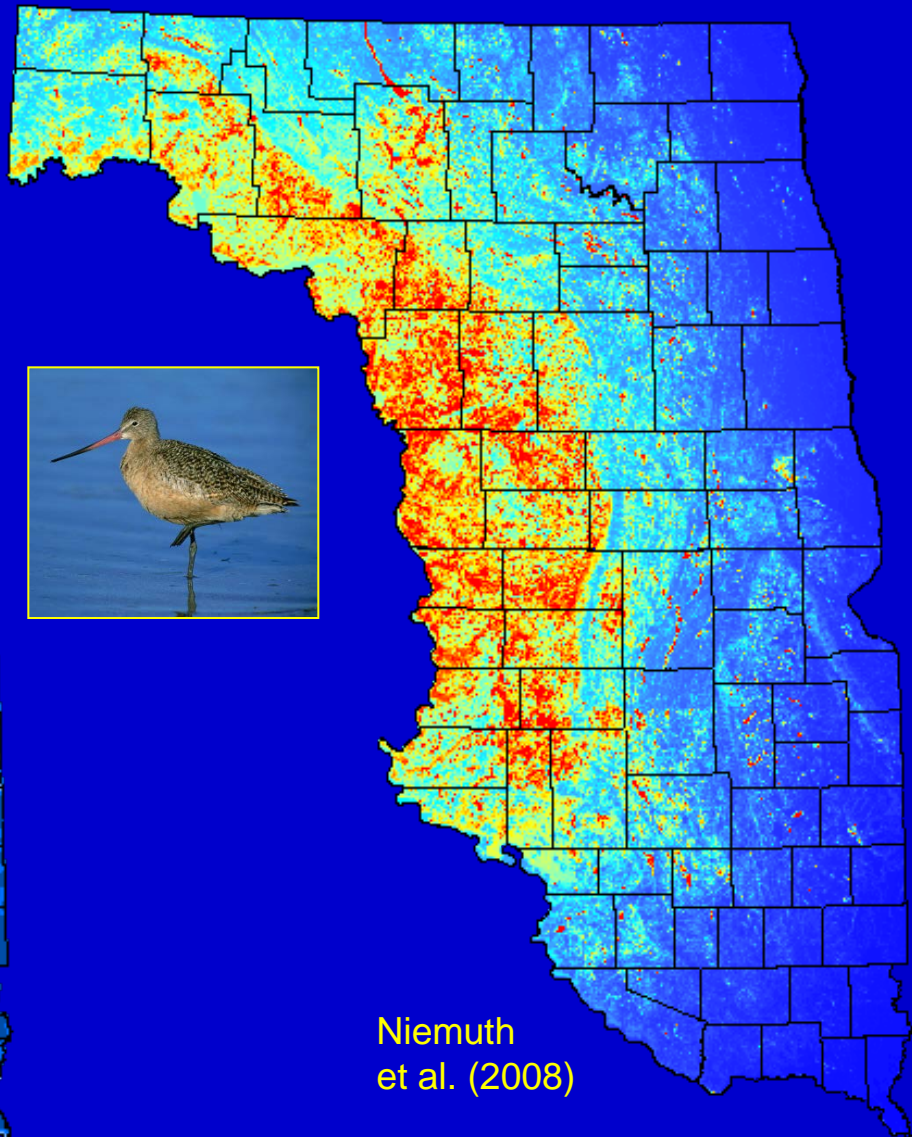
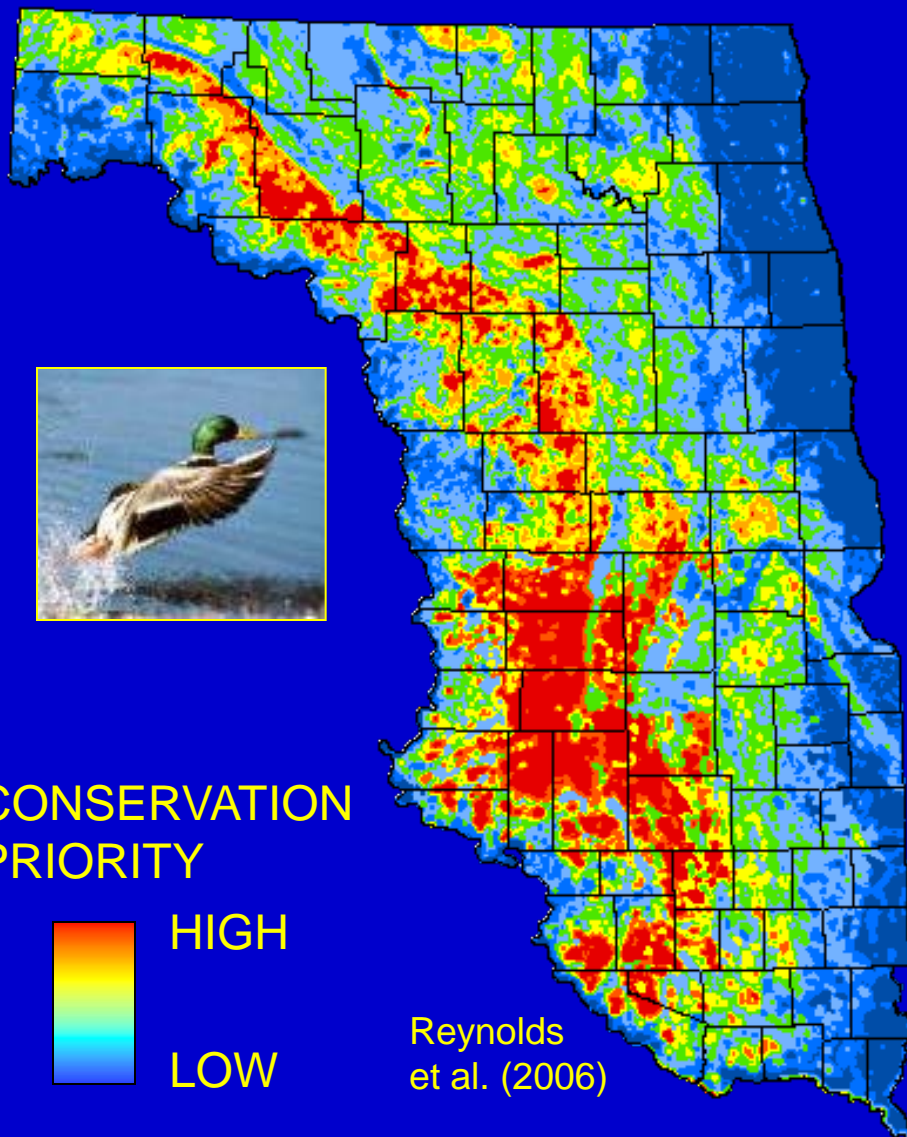


U.S. Fish and Wildlife Service

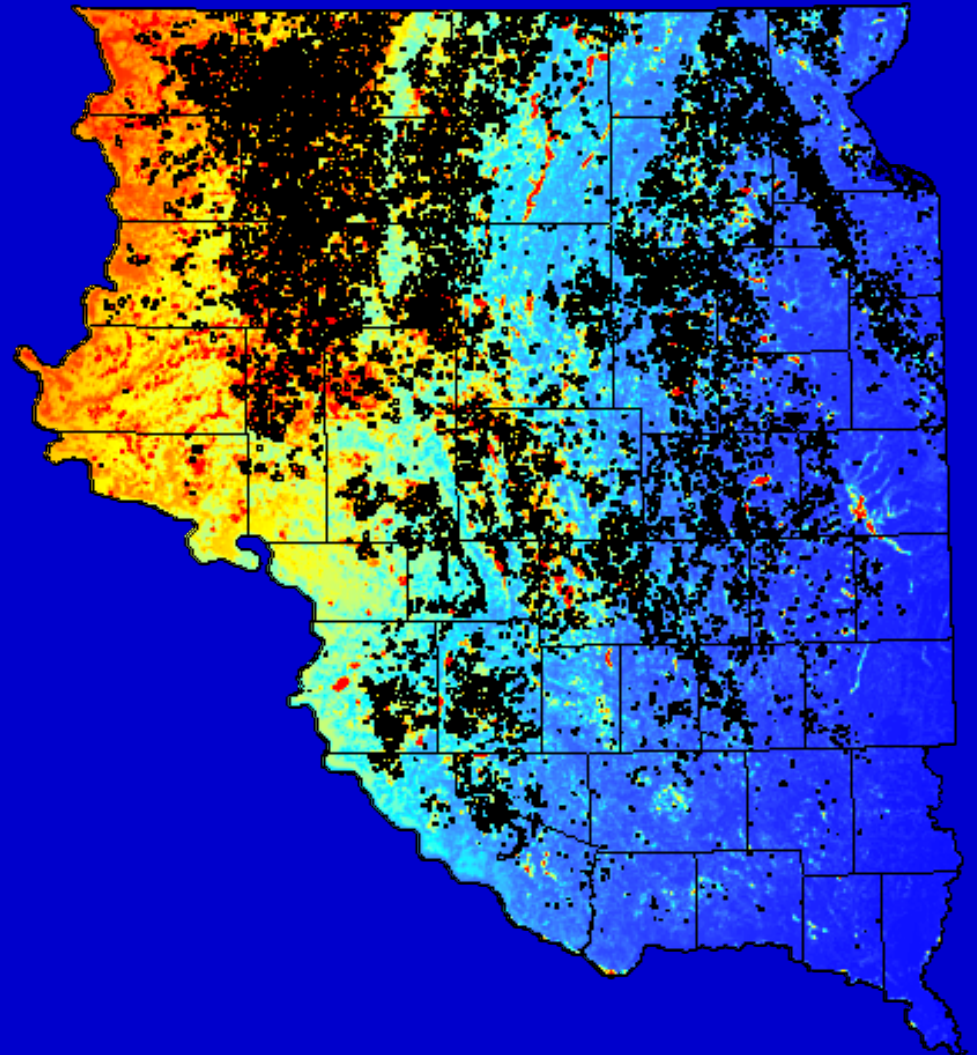
Do we practice SHC and have surrogates in the Prairies?



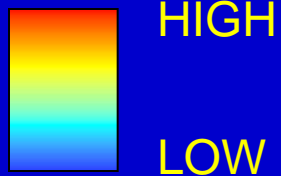
MODELED WATERFOWL AND MARBLED GODWIT DISTRIBUTION ARE SIMILAR



MODELED DISTRIBUTION OF MARBLED GODWIT IN EAST-RIVER SOUTH DAKOTA



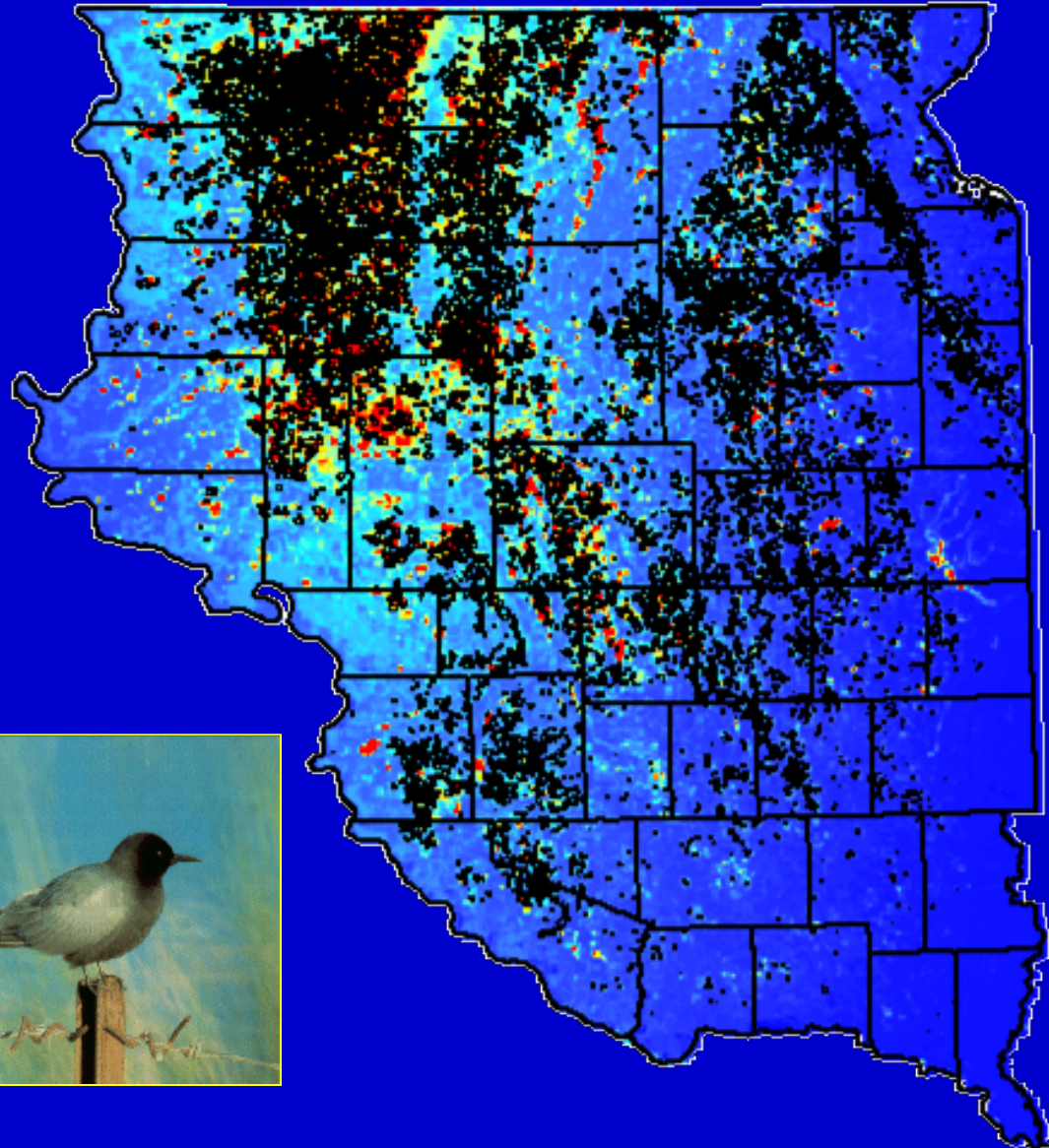
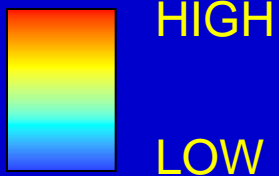
PROBABILITY
OF OCCURRENCE



FWS PROTECTION OVERLAIN ON BLACK TERN HABITAT, SOUTH DAKOTA

-  FWS WPA
-  FWS GRASS EASEMENT
-  FWS WET EASEMENT

PROBABILITY OF OCCURRENCE





What can you/we do about it?

- The Field represents FWS conservation - engage.
- Commit to building capacity – gather science and test assumptions.
- Make it mean something . . . unwavering commitment to supplying managers and biologists with tools for implementation, not prescriptions.
- Priorities are not bad . . . If surrogates get us there, then great.
- How do we know when we get there? When we're doing it, not just talking about it.