

Impaired Waters 303d (2013)

Impaired Water Areas 303d (2013)

Municipal Separate Storm Sewer Systems (MS4s)

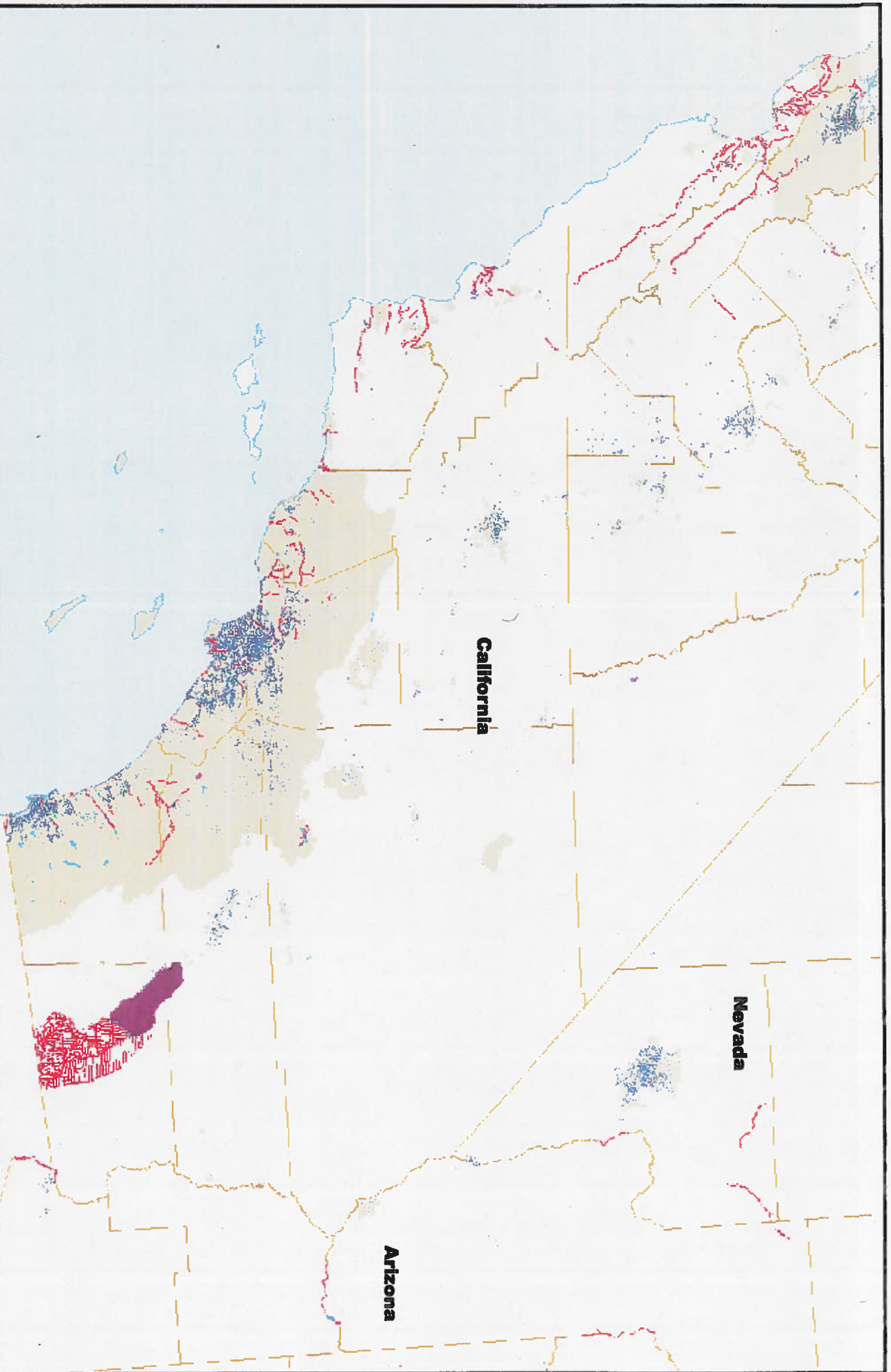
### Stormwater Permits, Impervious Cover, and Impaired Waters in Region 9

% Impervious Cover

> 70%



ORC1402127.1a  
January 16, 2014



Impaired Waters 303d (2013)

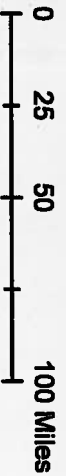
Impaired Water Areas 303d (2013)

Municipal Separate Storm Sewer Systems (MS4s)

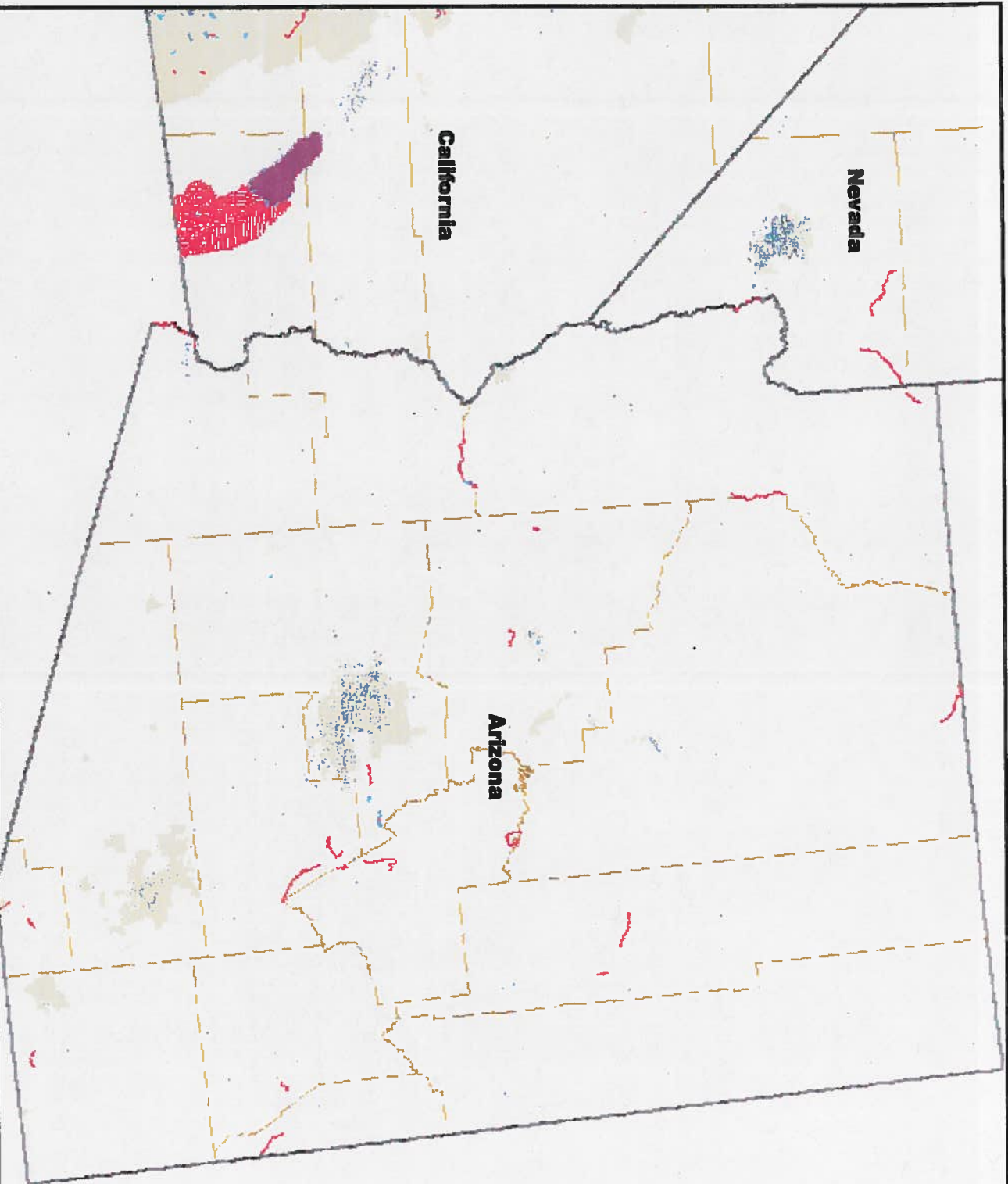
## Stormwater Permits, Impervious Cover, and Impaired Waters in Region 9

% Impervious Cover




> 70%




ORC1402127.1b  
January 15, 2014

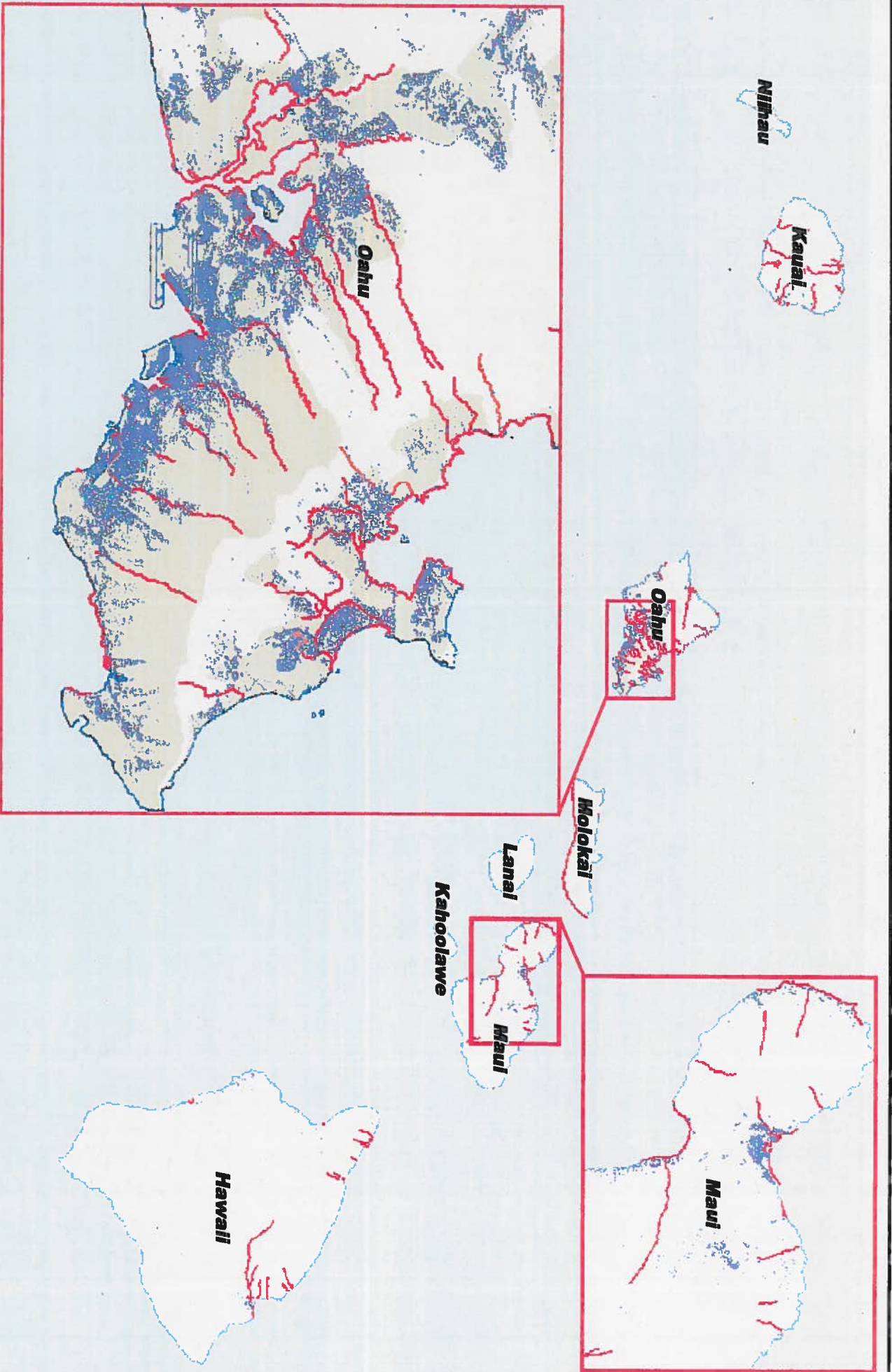


## Stormwater Permits, Impervious Cover, and Impaired Waters in Region 9




-  Impaired Waters 303d (2013)
-  Impaired Water Areas 303d (2013)
-  Municipal Separate Storm Sewer Systems (MS4s)



 % Impervious Cover  
> 70%



## Stormwater Permits, Impervious Cover, and Impaired Waters in Region 9

-  Impaired Waters 303d (2013)
-  Impaired Water Areas 303d (2013)
-  Municipal Separate Storm Sewer Systems (MS4s)

 % Impervious Cover  
> 70%

