

Better Buildings Webinar Series

We'll be starting in just a few minutes....

Tell us...please send your response to the webinar organizers via the question box:

How are you involved in Better Buildings?

- BBA Partner
- BBC Partner
- Both BBA and BBC
- Neither – Just Gathering Info
- Other (please specify)



Better Buildings Alliance

Annual Open House Webinar

Thursday, September 29, 2016
3:00 PM - 4:00 PM EDT

Agenda

- 3:00** Welcome and Introductions
- 3:05** Better Buildings Alliance Overview and Program Updates
- 3:15** Sector Priorities and Activities
- 3:35** Technology and Market Solutions Opportunities
- 3:55** Get Involved

Welcome & Introductions

Better Buildings Team Members on Today's Call:



Holly Carr
DOE

BETTER BUILDINGS
PARTNERSHIPS, RETAIL LEAD



Cindy Zhu
DOE

COMMERCIAL REAL ESTATE
LEAD, MARKET SOLUTIONS



Andy Mitchell
DOE

HOSPITALITY LEAD



Sultan Latif
DOE

FOOD SERVICE, HEALTHCARE,
AND HIGHER EDUCATION LEAD



Jordan Hibbs
DOE

TECHNOLOGY SOLUTIONS
LEAD



Zach Abrams
ICF

RETAIL ACCOUNT MANAGER



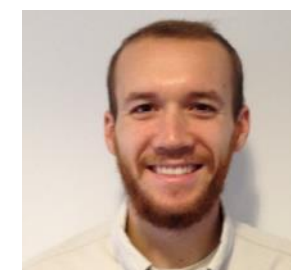
Jacob Dowling
JDM

COMMERCIAL REAL ESTATE
ACCOUNT MANAGER



Samantha Stafford
JDM

HEALTHCARE AND HOSPITALITY
ACCOUNT MANAGER



John Jameson
ICF

HIGHER EDUCATION
ACCOUNT MANAGER



Prithvi Acharya
ICF

FOOD SERVICE AND GROCERY
ACCOUNT MANAGER

Alliance Steering Committees

Better Buildings Alliance Steering Committee Chairs, 2016-2017



John D'Angelo
Northwestern
University
HIGHER EDUCATION



Joan Kowal
Emory University
HIGHER EDUCATION



Ken Hansen
University of Nebraska
Medical Center
HEALTHCARE



Pat Lydon
Legacy Health
HEALTHCARE



Eric Duchon
Cushman & Wakefield
COMMERCIAL REAL ESTATE



Ray Hobbs
Kelco Management &
Development
HOSPITALITY



Chris Magee
MGM Resorts
International
HOSPITALITY



Jim McClendon
Walmart
RETAIL, FOOD SERVICE,
AND GROCERY

Better Buildings Program Updates

Better Buildings Alliance: How is it organized?



Commercial
Real Estate



Food Service, Retail,
and Grocery



Healthcare



Hospitality



Higher Education

MARKET SOLUTIONS TEAMS



Energy Efficiency Project Financing



Leasing and Tenant Build-Out



Energy Data Access



High Performance Property Valuation and Mortgages

TECHNOLOGY SOLUTIONS TEAMS



Lighting & Electrical



Energy Management
Information Systems



Space Conditioning



Renewables Integration



Plug & Process Loads



NEW! Building Envelope



Refrigeration

Better Buildings Alliance Snapshot

PARTNERSHIP

Number of Partners Organizations	213 <i>(174 partners, 39 affiliates)</i>
Square Feet Represented	11 Billion
Percent of U.S. Commercial Buildings	12%
New Partners in 2016	17 <i>(12 partners, 5 affiliates)</i>

RESOURCES

Energy Saving Resources Available to Partners	100+
--	------

Better Buildings Solution Center



Proven Solutions for:

- Large and small buildings
- All sectors
- Specific building types

Search by:

- Your energy efficiency barrier
- Your sector
- Your city or state

betterbuildingsolutioncenter.energy.gov

Welcome to New Partners!



Affiliates



vizientTM



BBA Program Updates

- Highlight your successes with Showcases and Implementation Models
- 2016 BBA partner progress update request: January through March for 2016
- New BBA energy data reporting option: ENERGY STAR[®] Portfolio Manager[®]
- BBA highlights included in Spring Better Buildings Progress Report



**SAVE
THE
DATE**

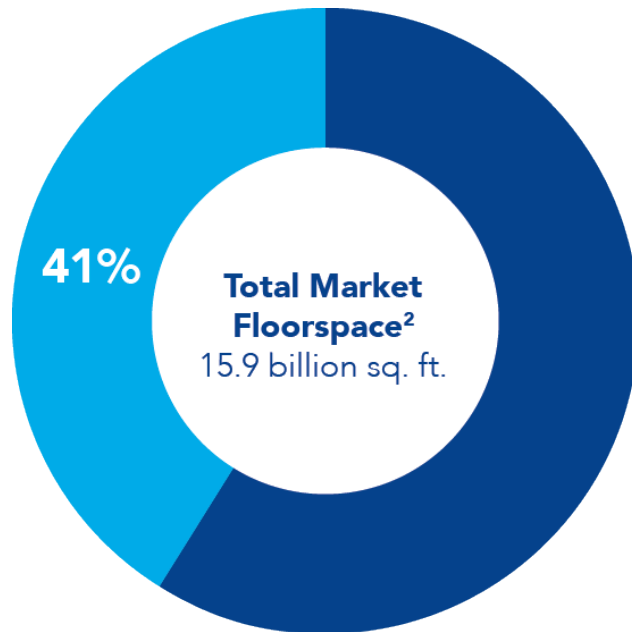
SUMMIT

WASHINGTON, D.C.
MAY 15-17, 2017

U.S. DEPARTMENT OF
ENERGY

Better Buildings Sector Updates

Commercial Real Estate Sector



Commercial Real Estate Partner Floorspace
6.5 billion sq. ft.

PARTNERS

- AtSite
- **Bank of America**
- CBRE
- Clarion Partners
- Colliers
- **Columbia Association**
- Cox Enterprises
- Cushman and Wakefield
- **Deutsche Asset Management**
- Equity One Inc.
- First Potomac Realty Trust
- **Forest City Realty Trust**
- General Services Administration (GSA)
- Glenborough
- Hines
- **Jamestown**
- Jones Lang LaSalle
- Kessinger Hunter & Co
- Kilroy Realty
- Kimco Realty Corporation
- Liberty Property Trust
- MC Realty
- Mesa Lane Partners, LLC
- Newmark Grubb Knight Frank
- **Parmenter Realty Partners**
- **PNC Financial Services Group**
- Principal Real Estate Investors
- **Prologis**
- Prudential Financial, Inc.
- Regency Centers
- Retail Properties of America
- Sharpe Properties Group, LLC
- **Shorenstein Properties, LLC**
- Siemens
- Studley
- **The JBG Companies**
- **The Tower Companies**
- The Westfield Group
- Tishman Speyer
- **Transwestern**
- **USAA Real Estate Company**
- Vornado
- Washington REIT

BOLDED partners are in the Better Buildings Challenge

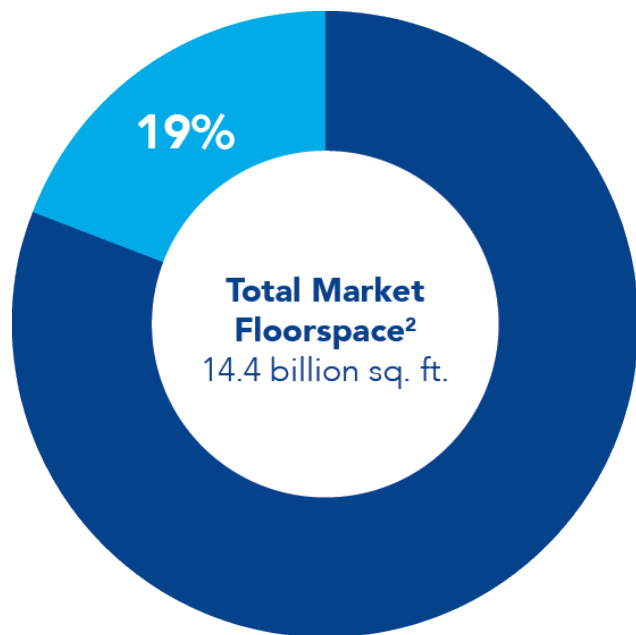
2016 CRE Sector Resources and Accomplishments

- Priority 1: Incorporating Energy Efficiency Into Appraisal and Valuation
 - Outcome: Appraisal Working Group, March Webinar, Appraiser Training
- Priority 2: Identifying and Evaluating Skilled Engineers
 - Outcome: Solution at a Glance – Sample Interview Questions
- Priority 3: Understanding and Communication the Connection between Sustainability and Financial Value
 - Outcome: Finance Working Group, Financial Data Research Entity

2017 CRE Sector Priorities and Proposed Activities

- **Priority 1: Encourage Tenant Level Sub-metering**
 - Potential Resource: Map or Database describing the differences in sub-metering regulation by market
- **Priority 2: Leased Space Energy Efficiency**
 - Participate in the upcoming Leased Space Energy Efficiency initiative (TBA)
- **Priority 3: Green Revolving Funds for CRE**
 - Potential Resource: Green revolving fund template for building owners
- **Priority 4: Impacting Class B & C Real Estate**
 - Potential Resource: Market-specific events in conjunction with an Affiliate (e.g. IREM, EDF)

Retail, Food Service, and Grocery Sector



Retail, Food Service & Grocery Partner Floorspace
2.7 billion sq. ft.

PARTNERS

- **Arby's Restaurant Group, Inc.**
- Army & Air Force Exchange Service
- Belk, Inc.
- **Best Buy**
- Boston Market
- CEFCO Stores
- Chipotle Mexican Grill
- **CKE Restaurants Holdings, LLC**
- Costco Wholesale Corporation
- Dunkin' Brands
- Einstein Noah Restaurant Group, Inc.
- Food Lion
- **Ford Motor Company**
- Hannaford
- **Kohl's Department Stores**
- Lamey-Wellehan Shoes
- Lowe's
- Luxottica North America
- **Macy's**
- McDonald's Corp
- Panda Restaurant Group, Inc.
- PetSmart
- Publix
- Red Robin Gourmet Burgers
- REI
- Safeway
- **Shari's Café & Pies**
- **Staples**
- **Starbucks Coffee Company**
- SUPERVALU
- Target
- The Home Depot
- **The Wendy's Company**
- Walgreens Co.
- **Walmart**
- Wawa
- **Whole Foods Market**
- Yum! Brands

BOLDED partners are in the Better Buildings Challenge

Sector Lead: Holly Carr, DOE – holly.carr@ee.doe.gov

Sector Lead: Sultan Latif, DOE – sultan.Latif@ee.doe.gov

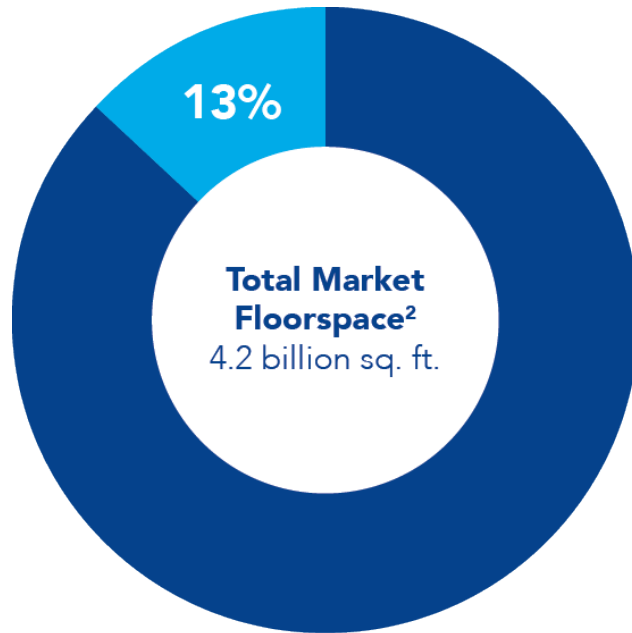
2016 RFSG Sector Resources & Accomplishments

- Priority 1: Proactively replacing or retrofitting roof-top units (RTUs)
 - [Retail Rooftop Unit Lease Language Guide](#)
 - RTU resources were promoted and featured at the Better Buildings Summit and during check-in calls with partners
- Priority 2: Developing strategies for dealing with large quantities of data from energy management information systems (EMIS)
 - EMIS Peer Exchange conducted July 2016
- Priority 3: Technology Performance Exchange (TPEX)
 - Better Buildings webinar on “Leveraging the Technology Performance Exchange (TPEX) for Large Portfolios,” on October 3rd, 4-5pm ET [Register](#)

2017 RFSG Sector Priorities and Proposed Activities

- Priority 1: Communicating new product & service needs to vendors and suppliers
 - Provide forum for manufacturers and/or DOE emerging technologies staff to hear directly from partners
- Priority 2: Retail display lighting
 - Host an open peer exchange call or webinar with the Lighting Tech Team
 - Develop guidance on retrofits to common retail display lamps
- Priority 3: Supply chain energy-efficiency
 - Peer exchange with Better Plants leads and partners in Supply Chain initiative
- Additional Interest: Water Efficiency
 - Develop RFSG Water Efficiency Toolkit for Solution Center

Healthcare Sector



 **Healthcare Partner Floorspace**
.53 billion sq. ft.

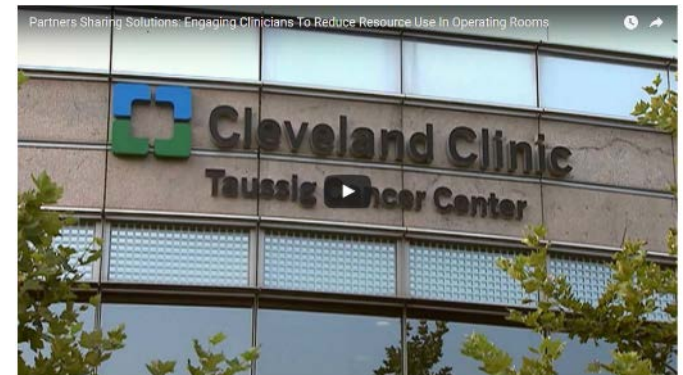
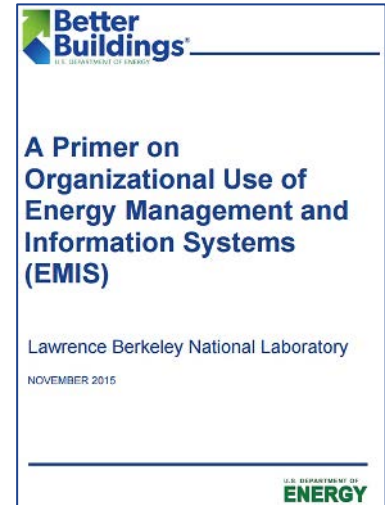
PARTNERS

- Abbott Northwestern Hospital
- **Ascension**
- Beaumont Health System
- Catholic Health Initiative
- CentraCare Health
- **Cleveland Clinic Foundation**
- Defense Health Agency
- Gundersen Health System
- **Hackensack University Medical Center**
- HealthSouth
- Kaiser Permanente
- Legacy Health
- Mayo Clinic
- **NewYork-Presbyterian Hospital**
- Summa Health System
- **University of Maryland Medical Center**
- **University of Nebraska Medical Center**
- University of South Alabama Medical Center
- University of Utah Health Care
- **UPMC: University of Pittsburgh Medical Center**
- Welltower

BOLDED partners are in the Better Buildings Challenge

2016 Healthcare Sector Resources and Accomplishments

- Evaluating offerings and managing building controls/EMIS
 - Resources: [Primer on Organizational Use of EMIS, Using EMIS to Detect Problems and Fix Them](#)
 - Take Action: [Smart Energy Analytics Campaign](#) launches in 2017!
- Optimizing air exchange rates in healthcare facilities
 - Resources: [Ventilation Setbacks for Healthcare Facilities](#), [Optimizing Air Exchange Rates in Hospitals](#), [Cleveland Clinic's Operating Room Implementation Model](#) and [video](#)



2016 Healthcare Sector Resources and Accomplishments

- Managing energy consumption of central plants and related equipment
 - Resources: [Systems Approach to Central Plant HVAC Optimization](#), [Central Plants: Keeping the Heart and Lungs Healthy](#), [Energy Efficiency for Large Chiller Systems](#)
 - Take Action: Review and provide feedback on the new [Central Plant Resource Hub](#)

The screenshot shows the 'Better Buildings' website's 'Central Plant' resource hub. The page features a navigation bar with 'HVAC Home', 'Central Plant', 'Distribution', and 'Space Loads'. The main content area is titled 'HVAC Resources' and includes a 'CENTRAL PLANT' section with a descriptive paragraph and a photograph of industrial equipment. A 'COMPONENTS' sidebar lists various parts of a central plant system.

Better Buildings
U.S. DEPARTMENT OF ENERGY

HVAC Home Central Plant Distribution Space Loads

HVAC Resources

CENTRAL PLANT

Central Plants are the heart of the HVAC systems in large buildings or complex of buildings. This section provides information on chillers, boilers, cooling towers, pumps, water treatment systems, valves, pipes sensors, and controls. Typically, central plants supply systems with cooling loads in excess of 50 tons. The added components in these systems add to the complexity of operations and a higher level of operator knowledge and control oversight than that of standalone HVAC systems.

COMPONENTS

- Boiler
- Chiller
- Cooling Tower
- Cool Thermal Energy Storage
- Hot Thermal Energy Storage
- Pump
- Sensors & Controls

Source: NREL Images

2017 Healthcare Sector Priorities and Proposed Activities

- Priority 1: Integrating Renewable Energy
 - Promote Renewable Integration Tech Team resources and share partner solutions through case studies and a peer exchange
- Priority 2: Leveraging Utility Offerings
 - Host a working group to identify barriers and solutions for partners and utilities to support the implementation of energy/water efficiency projects at facilities.
 - Promote the utility offerings available to healthcare facilities
- Priority 3: Addressing the Energy/Water Nexus
 - Evaluate and prioritize energy and water efficient technologies
 - Develop case studies and/or technology specifications to be determined by partners

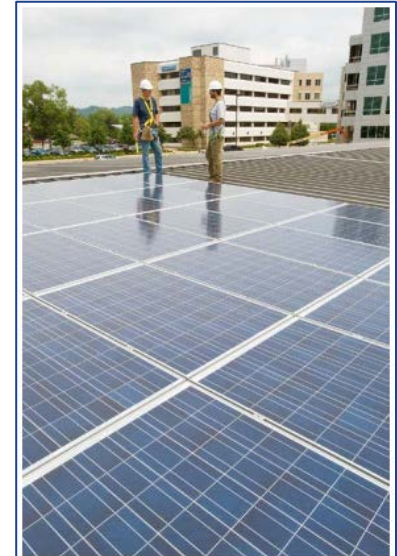
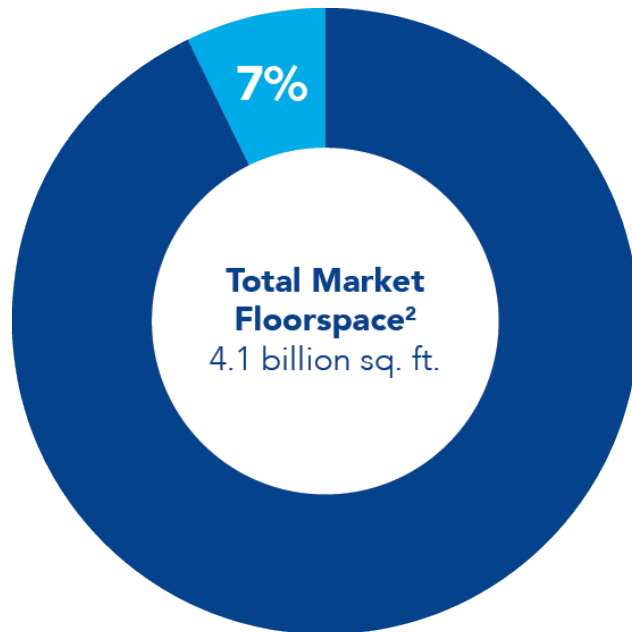


Photo credit: Gundersen Health System.



Higher Education Sector



**Higher Education
Partner Floorspace**
.30 billion sq. ft.

PARTNERS

- Clark Atlanta University
- **Community College of Allegheny County**
- Cornell University
- Duke University
- Emory University
- Grand Valley State University
- Loyola University
- Massachusetts Institute of Technology
- **Michigan State University**
- **Northwestern University**
- Portland State University
- Ramapo College
- Stanford University
- Tulane University
- **University of California, Berkeley**
- University of California, Davis
- **University of California, Irvine**
- University of California, Merced
- University of Colorado Boulder
- **University of Hawaii at Manoa**
- University of Maryland
- University of Massachusetts Medical School
- University of Miami
- University of South Carolina
- **University of Utah**
- University of Wisconsin

BOLDED partners are in the Better Buildings Challenge

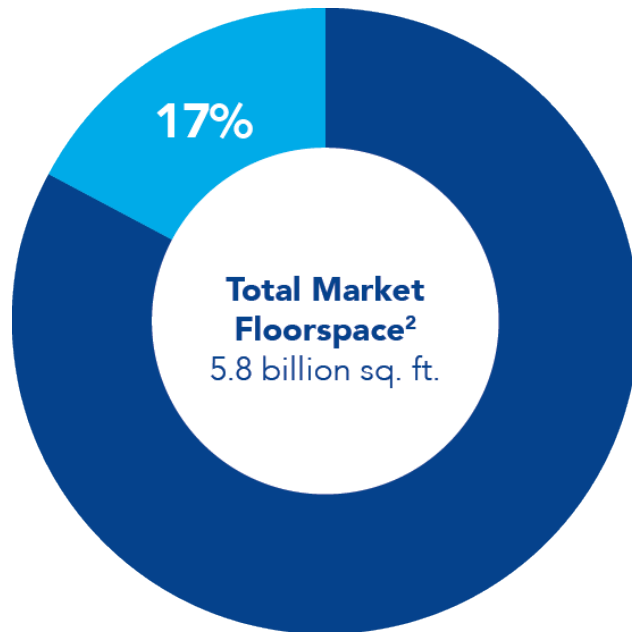
2016 Higher Education Sector Resources and Accomplishments

- Continuous Commissioning and Controls Optimization
 - April webinar: [Fault Detection & Diagnostics in Higher Education](#)
 - Summit session: [From Numbers to Action: Using EMIS to Detect Problems and Solve Them](#)
 - Launch of [Smart Energy Analytics \(SEA\) Campaign](#)
 - 9/27 Space Conditioning Team Call on Fan Retrocommissioning Guide and Central Plant Resource Hub
- Improving Facilities Benchmarking
 - Ongoing work with campus data consortium: UNH, USGBC, AASHE, APPA, SEI, Second Nature, Sightlines, AACC and NACUBO.
 - Currently mapping out data fields for each organization's tools. Next meeting scheduled for Oct. 25th @ MIT
- Addressing Campus Growth
 - Summit session: [Make Space! Curbing Campus Growth and Using Space Wisely](#)
 - Member Peer Exchange in December

2017 Higher Education Sector Priorities and Proposed Activities

- **Priority 1: Improving Facilities Benchmarking**
 - Continue our work with the Higher Education Data Consortium group being convened by UNH & USGBC
 - Hold webinar with benchmarking working group to walk through Building Performance Database
 - Facilitate group to approach EPA/ASHE for guidance on surveying institutional energy consumption patterns
- **Priority 2: Engaging Occupants through Energy Management Information Systems**
 - Hosting EMIS workshop at LBNL in October to discuss M&V and strategies for submetering and occupant engagement
 - Promote case studies and best practices, including UC Berkeley's IM on leveraging building energy dashboards
 - 5 universities have already joined Smart Energy Analytics campaign to develop case studies
- **Priority 3: Energy Efficiency in Climate Action Plan Acceleration**
 - Presenting at Second Nature Climate Leadership Summit in February
 - Evaluate enhanced role for building energy efficiency in AASHE STARS
 - Complete and promote Implementation Models on successful campus climate action planning

Hospitality Sector



Hospitality Partner Floorspace
.99 billion sq. ft.

PARTNERS

- HEI Hotels & Resorts
- **Hilton Worldwide**
- Hyatt Hotels Corporation
- **IHG (InterContinental Hotels Group)**
- Kelco Management & Development
- Las Vegas Sands Corporation
- **Loews Hotels**
- Marriott International
- **MGM Resorts International**
- **Saunders Hotel Group**
- The Kessler Collection
- The Walt Disney Co.
- **Wyndham Worldwide**

BOLDED partners are in the Better Buildings Challenge

2016 Hospitality Resources and Accomplishments

- Evaluating offerings for building controls/analytics/EMIS and managing EMIS
 - Resources: [Primer on Organizational Use of EMIS](#), [Cutting Edge Building Technologies](#), [From Numbers to Action: Using EMIS to Detect Problems and Fix Them](#)
 - Take Action: [Smart Energy Analytics Campaign](#) (launching 2017!)
- Hospitality Industry Benchmarking
 - Take Action: AH&LA Hotel Energy Survey – [submit now](#)
- Evaluating and financing solar at hospitality properties
 - Resources: [On-Site Commercial Solar PV Decision Guide for the Hospitality Sector](#), [Solar PV Case Studies](#)



Better Buildings
Case Study:
Ground-Mounted Solar Array in Hospitality

TownPlace 5 Large Solar In
TownPlace 5
Address in Mo
Suite Hotel LL
Clinton Suite
piece of land a
and was previo
However, they
identified the
which would a
with also find
determining the
improving the
negotiation.

Project Keys
The primary mo
to decrease no
valuable prop
and support an
environment.

Additionally, th
hotel would be
the Maryland S
California 2015
hotel to sell for
electricity using
benefits. The
electricity sold
maximum profit
by renewable e
not through th
income. In add
PV, the hotel s
building at all
around it, plus
emissions offe
Metric.

Better Buildings
Case Study:
Installing Hotel Rooftop Solar Array

Integrating Rooftop
Bardeano, a hotel
opened in 2009, was
most energy efficient
The owners wanted
provide a fully sustain
very green at the start
to practical, economic
usage environment
integrated compon
was it certified LEED
LEED certification
Bardeano is one of
with LEED Platinum

Project Keys to Su
The primary motivat
solar array in the old
energy savings as a r
certification requires
also because that sol
solution to reducing
and other hotel fans.
As part of the new r
efficiency solar panel
provides 197.4 kilow
Bardeano was in a
produce additional
used by the hotel. O
did fall early, howev
warranty covered the
thereby the hotel is
negotiation.

The hotel's predictio
approach solar panel
on the roof, so the ar
modified to have the
roof surface. Althoug
layout for maintaini
the design received a
building integrated

Better Buildings
Case Study:
Installing Carport Solar Array
BETTER BUILDINGS ALLIANCE

Two Birds with One Stone: Installing
Carport Solar Arrays

The Hampton Inn & Suites Bakersfield North
Airport, located about two hours north of Los
Angeles, California, has to operate in a hot
climate where summer daytime temperatures
often exceed 100°F. As a result, the hotel's
largest electric utility expenses are for heating
ventilation, and air conditioning (HVAC) cost
maintaining comfortable indoor temperatures
for guests 24/7. To mitigate electricity costs, the
hotel management, Blackstone Hospitality
Group, began to investigate opportunities to
install solar.

Project Keys to Success
Installing a rooftop array would have been
problematic because it would have required the
hotel to slow the top floor during construction,
forfeiting that revenue for the construction
period. Installing a carport-mounted array
bypassed this potential issue, and additionally
offered much-needed shade from the sun for
guest cars.

There were two additional approvals necessary
since the support solar array was planned.
The Hampton Inn & Suites is a franchise of the Hilton
Worldwide brand, therefore Hilton Worldwide
needs to approve any aesthetic modifications to
its hotels. The approval process went smoothly
for the Hampton Inn & Suites because the Hilton
Worldwide was very supportive and responsive to
the project. Specifically, the sustainability
department and the design & construction
department, including the Vice President of
Design & Construction, helped move the project
through the process quickly. Additionally, the
many hotel programs, the Hampton Inn is
located in a local Planned Development zone,
which requires changes to the property to
receive additional income by the planning
jurisdiction. The additional steps also proceeded
smoothly.

SOLAR PROJECT SPOTLIGHT	
Date Installed	July 2014
Location	Bakersfield, California
Size	100 kW
Annual Production	157,000 kWh
Electricity Offset	37.44%
Monthly Bill Savings	\$8,000
Expected Payback	7.75 years
Financing	SBA 504 Green Energy loan

Part of the Hampton Inn & Suites array in Bakersfield, CA. Photo credit: REC Solar.

2017 Hospitality Priorities and Proposed Activities

- Evaluate energy and water efficient technologies and promote technological, operational, and/or departmental solutions for hospitality
 - Various technologies will be considered
 - Collaboration with partners and Tech teams to prioritize technologies and develop resources



Partner suggested technologies include:

PTAC next generation units, central plant monitoring systems, battery storage, phase change materials (PCMs), energy efficient refrigerants, air to air (or very little water) cooling towers, elevator and escalator controls, magnetic chillers.

- Enable franchisees to implement energy/water efficient operations
 - Work with AAHOA, AH&LA, and our brand partners to develop resources for franchise level improvements

Better Buildings Tech Team Updates

Join a Technology Solutions Team!



Building Envelopes
(NEW!)



Plug and Process
Loads



Refrigeration



Renewables
Integration



Energy
Management
Information Systems



Space Conditioning



Lighting and
Electrical

Building Envelope Team

- Fall 2016: Kick-off Envelope Tech Team
 - Windows, Roofs, and Walls
 - Save the date: Kick-off Open House Webinar: Nov 9, 3-4ET
- 2017 Plans
 - Coordinate Building Demonstrations: R-5 windows, sprayable sealant technologies, and envelope air sealing strategies
 - Installation guidance and heat and moisture analysis
 - Webinars on available energy efficient technologies



Melissa Voss Lapsa

Oak Ridge National
Laboratory

lapsamv@ornl.gov

Plug and Process Load (PPL) Team

- 2017 Plans
 - Host demonstration videos of PPL control products
 - 2017 PPL Utility Incentives List
- 2016 Highlights
 - [Decision Guides for Plug and Process Load Controls](#)
 - [Myth Busting: Market Barriers to Advanced Power Strips](#)
 - [2016 PPL Utility Incentives List](#)
 - Energy Savings and Usability of Zero Client Computing in Office Settings Study (Fall 2016)



Rois Langner

National Renewable Energy
Laboratory
margarete.langner@nrel.gov

Refrigeration Team

- 2017 Plans

- Design/launch Refrigeration Toolkit
- Develop Case Studies: Refrigeration controls, retrofit of open display cases, and alternative refrigerants

- 2016 Highlights

- Peer Call: Whole Foods presented on transcritical CO₂ experience
- Pursued case studies on retrofit of open display cases and refrigeration controls



Justin Elszasz

Navigant Consulting

Justin.Elszasz@navigant.com

Renewables Integration Team

- 2017 Plans
 - Energy storage decision making guide
 - October team meeting with Whole Foods on solar PV and roofing
- 2016 Highlights
 - [Solar PV RFP & Procurement Guidance Template](#)
 - [Fact Sheet: 7 Steps To Selecting A Solar Provider](#)
 - [10 Case Studies](#)



Jay Paidipati

Navigant Consulting
jpaidipati@navigant.com

Energy Management Information Systems (EMIS) Team

■ 2017 Plans

- [Smart Energy Analytics \(SEA\) Campaign](#)
 - Technical assistance & national recognition
 - Information on how to implement cost-effective energy savings
- Develop resource on top MBCx measures, with associated data analytics guidance
- Coordinate Real Building Demonstrations

■ 2016 Highlights

- Gathered input for SEA Campaign and began recruitment
- Real Building Demonstration of market ready EMIS technology



Jessica Granderson

Lawrence Berkeley National
Laboratory

jgranderson@lbl.gov

Space Conditioning Team

- 2017 Plans
 - Expansion of Central Plant Resource Hub
 - ASHRAE Guideline 36 application resources
- 2016 Highlights
 - Tune-up your fan systems (Fall 2016)
 - Central Plant Resource Hub (Fall 2016)
 - [OpenStudio](#) model for HVAC efficiency measures for RTUs and other packaged HVAC systems



Michael Deru

National Renewable Energy
Laboratory
michael.deru@nrel.gov

Space Conditioning Team: Advanced Rooftop Unit (RTU) Campaign

- RTU Campaign

- Technical assistance & national recognition
 - 2015 Award Recognitions at the 2016 PRSM National Conference
- Business Case Considerations for Proactive Rooftop Unit Replacement
- Retail Rooftop Unit Lease Language

- 2017 Plans

- 2016 Award Recognitions at the 2017 PRSM National Conference
- Results of Automated Fault Detection and Diagnostics (AFDD) for RTUs demonstrations
- Continued recruitment and expansion



Lighting and Electrical Team

- [Interior Lighting Campaign \(ILC\)](#)
 - So far \$13.5 million in annual energy savings from over 680,000 troffers.
 - Submit site information for 2017 ILC awards
- [Lighting Energy Efficiency in Parking \(LEEP\) Campaign](#)
 - Over 140 total LEEP Participants
 - 2014/2015 LEEP awardees achieved up to 91% energy savings
- 2017 Plans:
 - Developing case studies
 - Aim for the 1 Million goal for ILC
 - Coordinate Real Building Demonstrations of advanced lighting controls



Linda Sandahl

Pacific Northwest National
Laboratory

linda.sandahl@pnnl.gov

Better Buildings Market Solutions Updates

Market Solutions Activities FY17

- Green Appraisals
 - Resource: Owners Guidance for Ordering High Performing Appraisals
 - Get Involved: Pilot the Guidance and publish case study w DOE
 - Get Involved: Host or participate in Energy Matters! training course
- Impact of Energy Factors on Commercial Mortgages
 - Resource: Webinar – [Commercial Mortgages: Energy Factors and Default Risk](#)
- Linking High Performing Buildings and Financial Performance
 - Resource: Initiative and Data Request Summary (Follow Up email)
 - Get Involved: Results from Pilot Research in October webinar
 - Get Involved: Join this new DOE Initiative and share data

Market Solutions Activities FY17

- **Leased Space Energy Efficiency**
 - Results: Energy Efficiency in Separate Tenant Spaces report
 - Get Involved: Provide feedback on proposed recognition for landlords and tenants
 - Get Involved: Join as a participant or supporter

Other Ways to Get Involved

- Develop a case study of your successful energy project
- Present on a Better Buildings webinar or peer networking call
- Serve as reviewer for DOE funding opportunities
- Invite others to join Better Buildings
- And...

Step up to the Challenge!

STEP UP TO THE BETTER BUILDINGS CHALLENGE

- ▶ Earn national recognition for energy efficiency leadership
- ▶ Join DOE in media events spotlighting your energy efficiency achievements
- ▶ Access technical assistance to analyze your portfolio energy use

PARTICIPATE IN THE BETTER BUILDINGS ALLIANCE

- ▶ Participate in peer-to-peer networking opportunities addressing sector specific energy topics
- ▶ Tap into expert-led technology and market solutions teams
- ▶ Access technology demonstration opportunities
- ▶ Develop public resources such as technical performance specifications and sample lease clauses

Many ways to stay informed!

Follow us on social media!

Twitter: @BetterBldgsDOE

LinkedIn

YouTube

Sign up for newsletters!

Beat Blog (weekly posts)

- Interviews/Q+As, follow-up pieces from partner events and press releases; solution deeper dive

Bulletin

- Monthly digest of new solutions, partners, news, events

Get Involved

- Monthly call to action email listing events, webinars, ways to participate with Better Buildings

Top-10 Solutions

- Monthly top ten viewed solutions

Participate in [monthly webinar series](#)

Check out the [newsroom](#) for press on events highlighting partner accomplishments

Join us on Twitter!

E  **ENERGY EFFICIENCY DAY**

Save energy. Save money.



Join us on Twitter, 1-2 p.m. EDT, #EEDay2016

Questions?

Thank You

SECTOR	DOE LEAD	ACCOUNT MANAGER	
Commercial Real Estate	Cindy Zhu Market Solutions Coordinator Commercial Real Estate Lead 202-586-9193 cindy.zhu@ee.doe.gov	Jacob Dowling, JDM Account Manager 703-873-7143 jdowling@jdmgmt.com	
Healthcare	Sultan Latif DOE Better Buildings 202-287-1829 sultan.Latif@ee.doe.gov	Samantha Stafford, JDM Account Manager 703-639-4265 sstafford@jdmgmt.com	
Higher Education	Sultan Latif DOE Better Buildings 202-287-1829 sultan.Latif@ee.doe.gov	John Jameson, ICF Account Manager John.Jameson@icfi.com	
Hospitality	Andrew Mitchell DOE Better Buildings 202-287-1578 Andrew.Mitchell@ee.doe.gov	Samantha Stafford, JDM Account Manager 703-639-4265 sstafford@jdmgmt.com	
Retail, Food Service, and Grocery	Holly Carr DOE Partnerships Retail Sector Lead 202-287-1409 holly.carr@ee.doe.gov	Sultan Latif DOE Better Buildings Food Service & Grocery Sector Lead 202-287-1829 sultan.latif@ee.doe.gov	Zach Abrams, ICF Retail Account Manager 646-334-1174 zach.abrams@icfi.com Prithvi Acharya, ICF Food Service & Grocery Account Manager 703-272-6690 Prithvi.acharya@icfi.com
Technology Teams	Jordan Hibbs Technology Teams Coordinator 202-287-1381 Jordan.hibbs@ee.doe.gov		