

# Request for Interest in Renewable Energy Leasing Offshore Maryland

---

Introduction

**Aditi Mirani**

Project Coordinator for Maryland  
Office of Offshore Alternative Energy Programs  
Minerals Management Service

# Overview



- What is an RFI
- Purpose of the RFI
- Determining Competitive Interest
- Information to be Submitted in Response to an RFI
- Maps showing the OCS Areas off Maryland

# What is an RFI?

---

- A Request for Interest (RFI) is a formal invitation of submissions of interest in obtaining leases or grants from the MMS, authorizing the construction and operation of a renewable energy project on the OCS
- An RFI is published by the MMS in the Federal Register followed by a comment period

# Public Comment Period

---

- The published RFI is accompanied by a public comment period
- The comment period is variable, but will typically be for 60 days
- Only submissions received by the comment period deadline will be considered

# Purpose of the RFI

---

- OCSLA (Outer Continental Shelf Lands Act) requires MMS to award leases competitively, unless MMS makes a determination that there is no competitive interest
- The RFI will assist MMS in determining if competitive interest exists in the described area

# Determining Competitive Interest

---

- Based on the information received in response to RFI, MMS will make a determination of competitive interest
  - Geographic overlap?
  - Intertract competition

# Information to be Submitted in Response to a RFI

---

- Items to be submitted in response to RFI:
  - Site locations
  - Timing and type of proposed activities
  - Infrastructure
  - Environmental and resource data and information
  - Qualifications to hold an OCS lease
- Others?

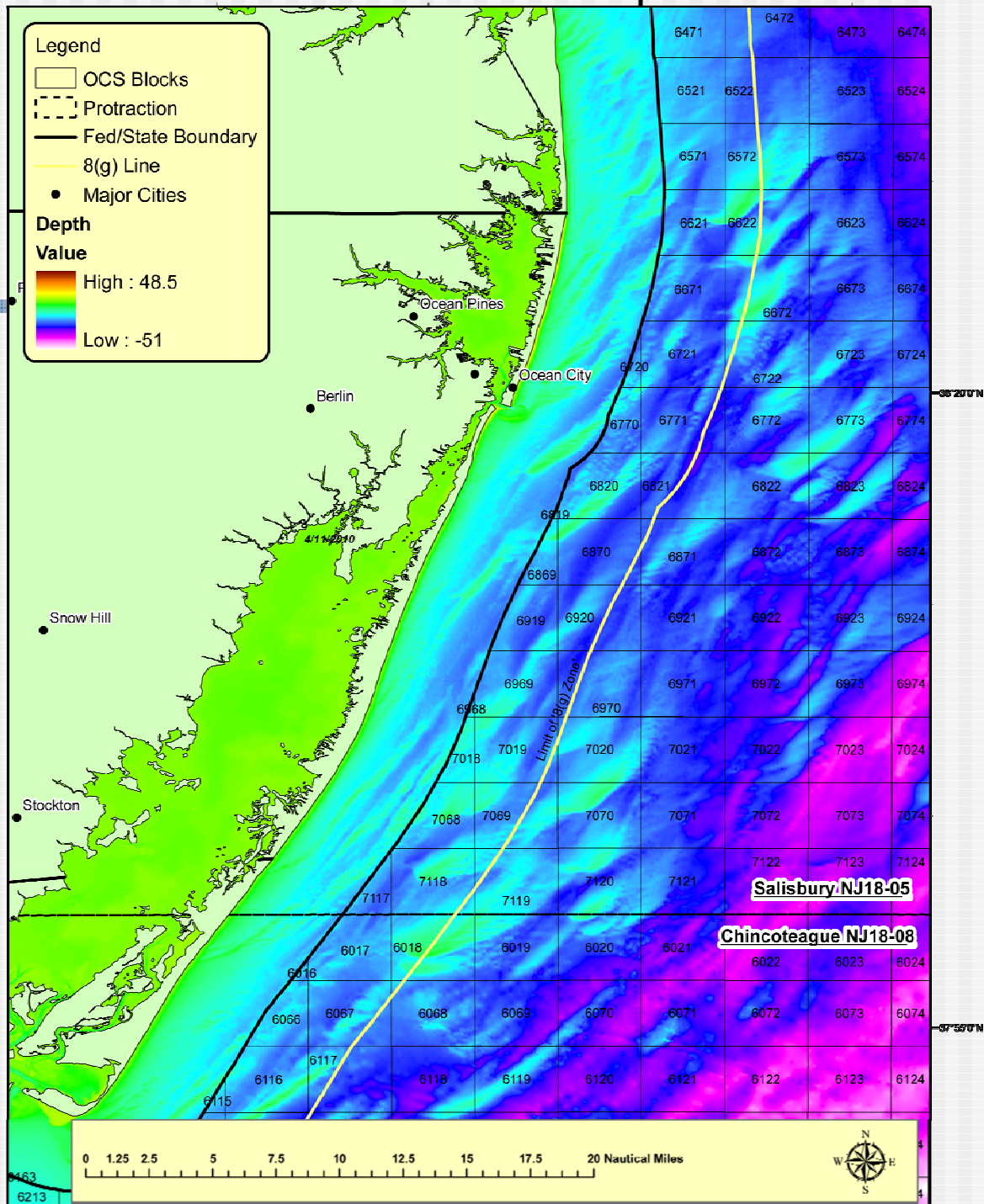
# RFI Elements for Task Force Members' Consideration

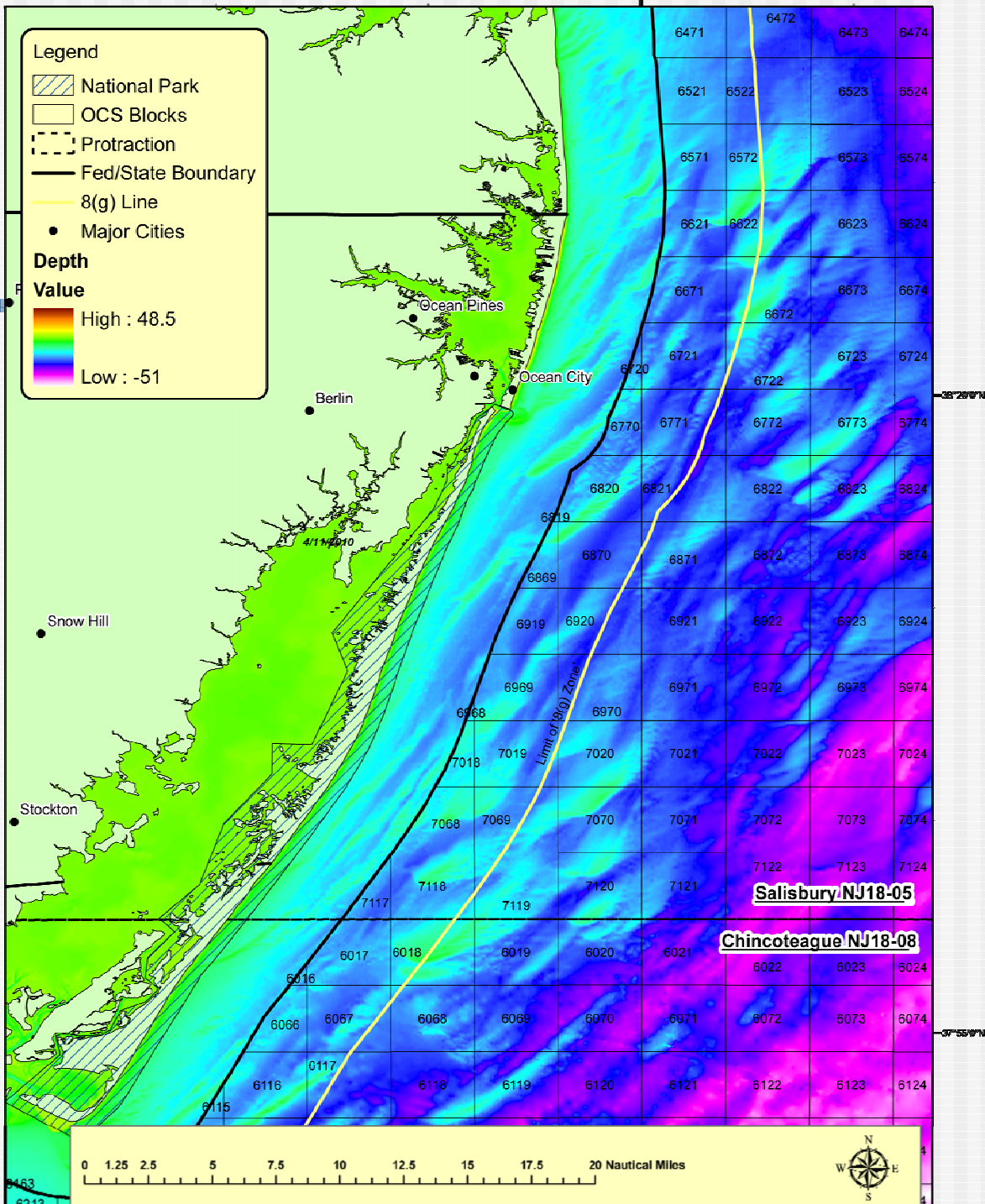
---

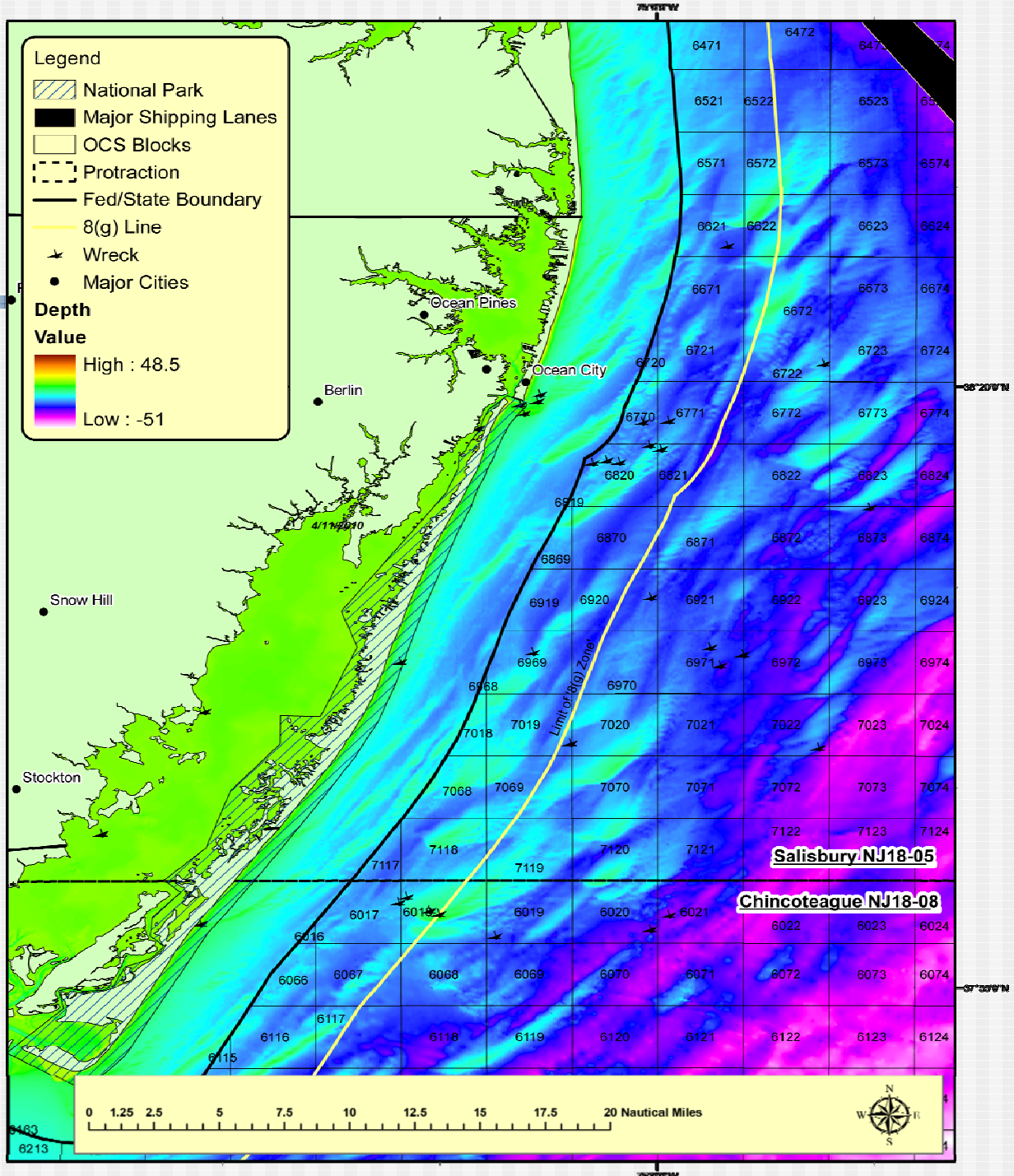
- Description of the RFI Area
- Required Indication of Interest Information

Task Force members will have the opportunity to review and comment on the draft RFI prior to its publication in the Federal Register





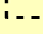



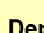






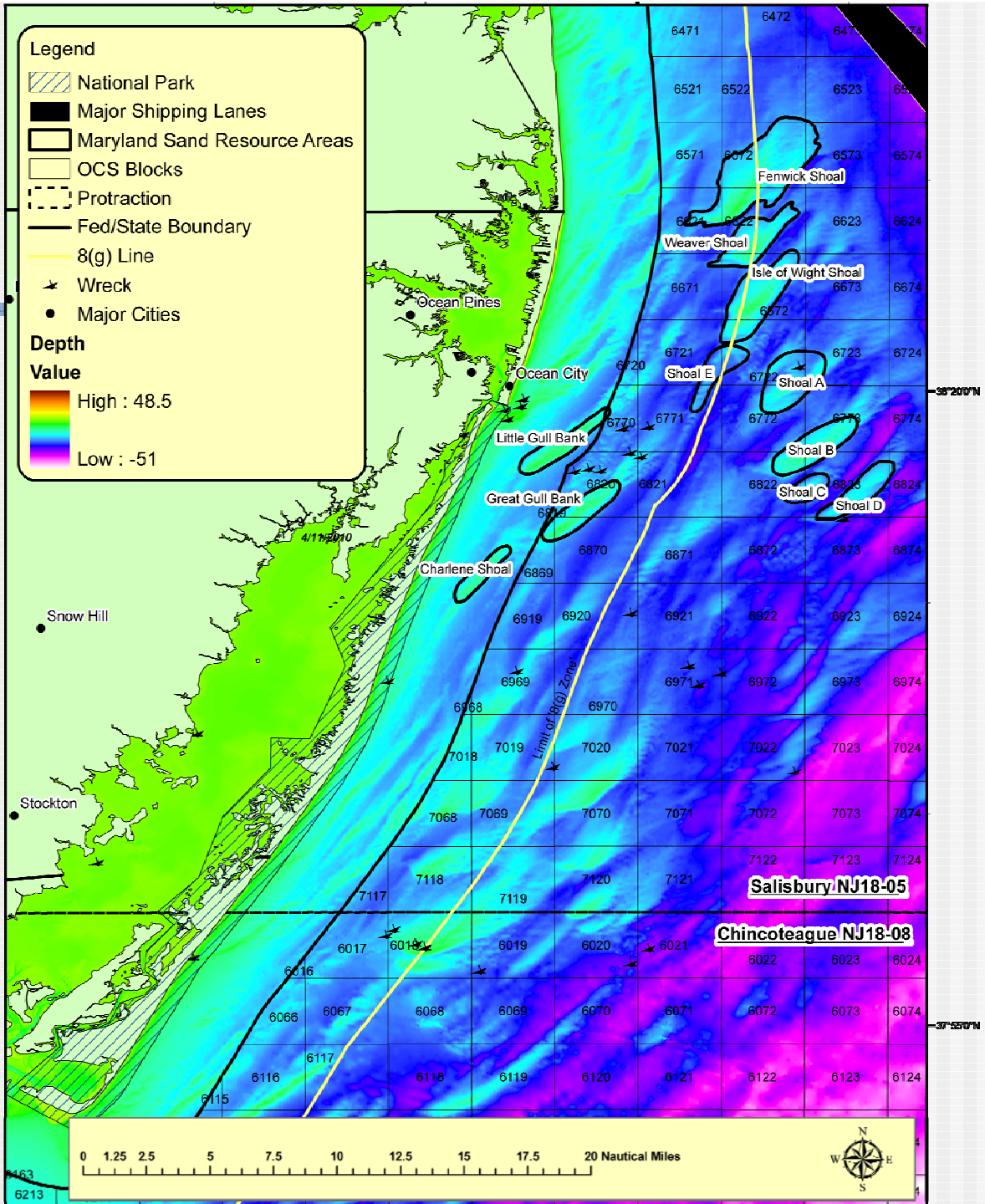
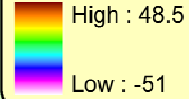


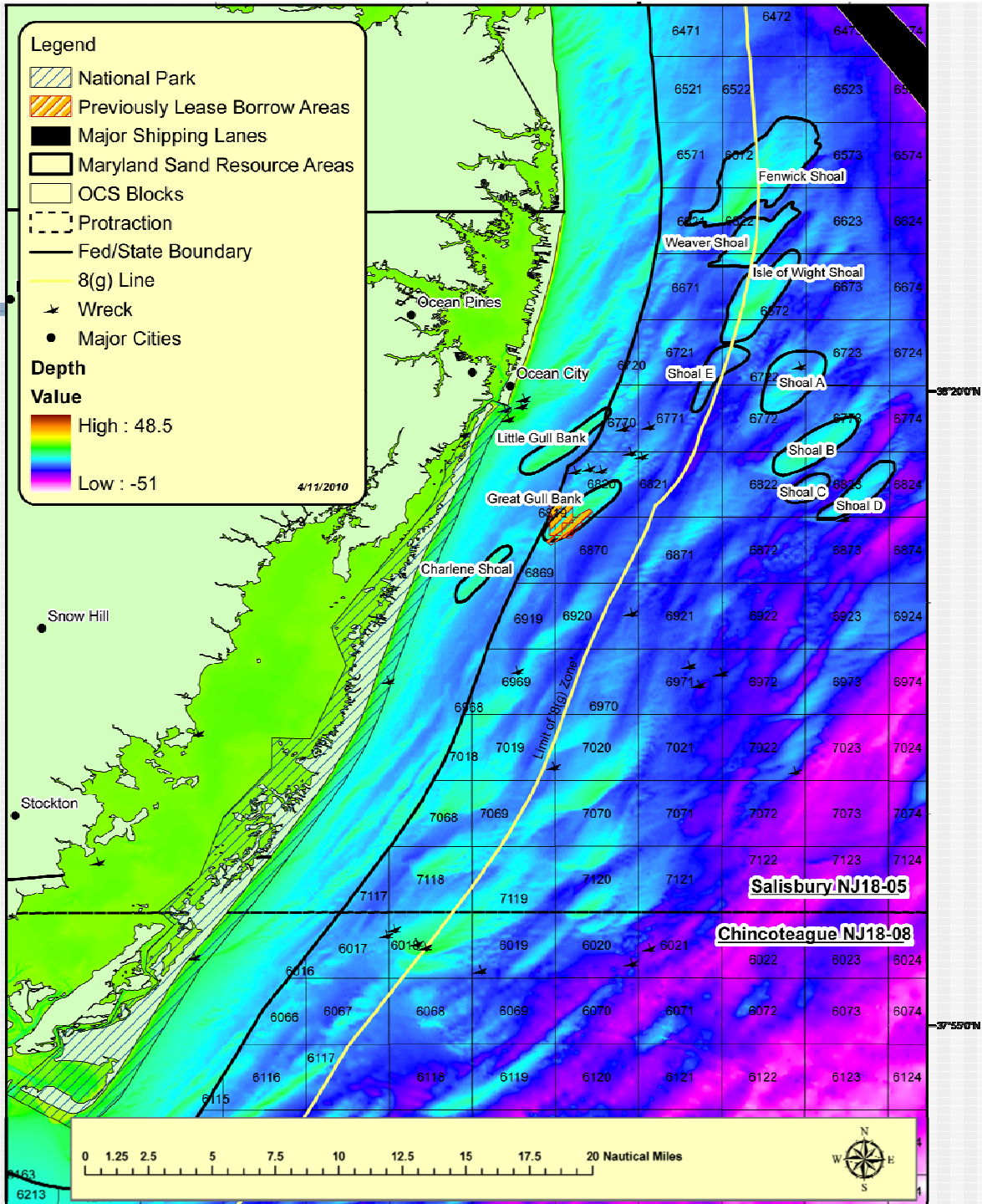
Legend

-  National Park
-  Major Shipping Lanes
-  Maryland Sand Resource Areas
-  OCS Blocks
-  Protraction
-  Fed/State Boundary
-  8(g) Line
-  Wreck
-  Major Cities

Depth

Value





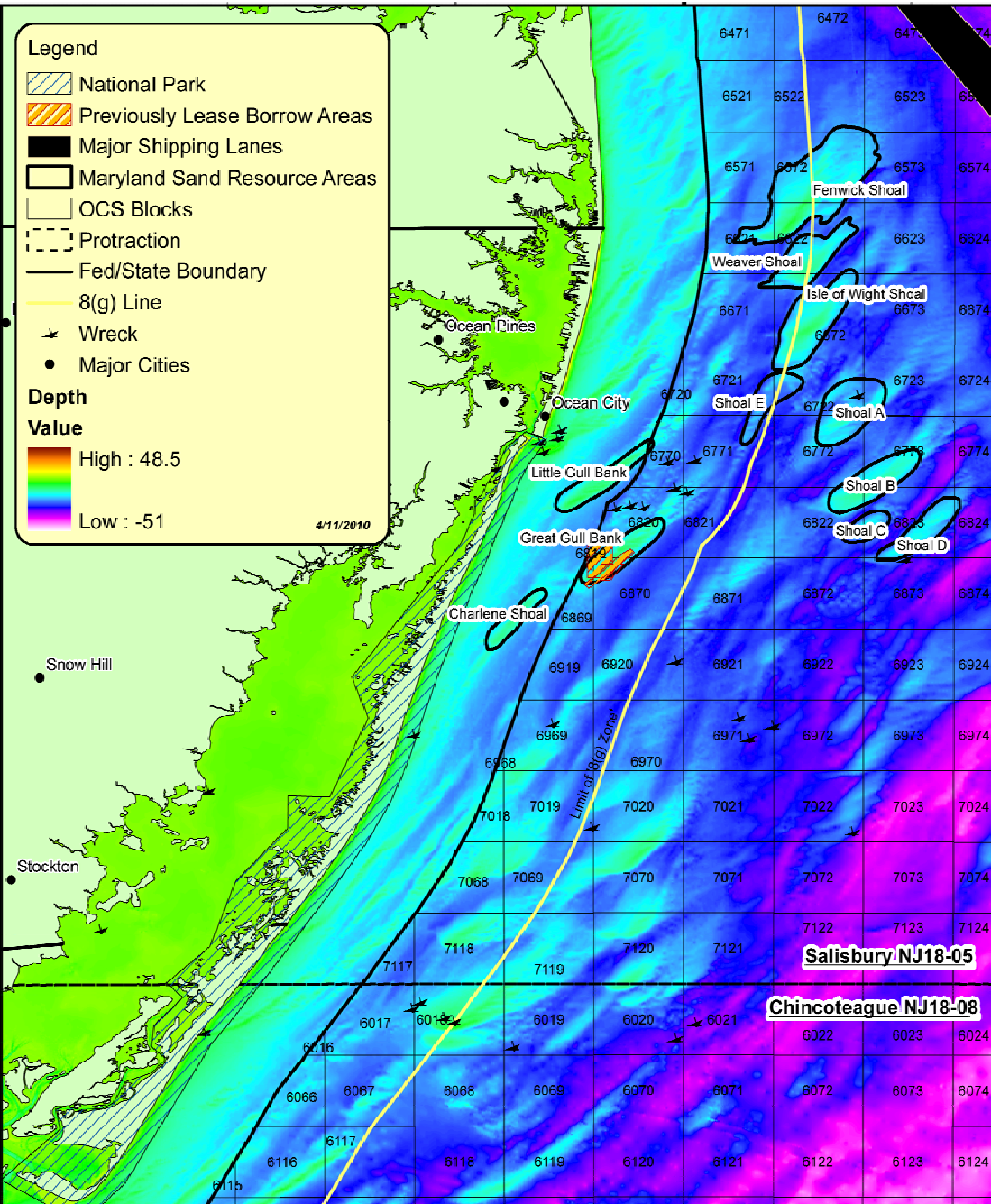
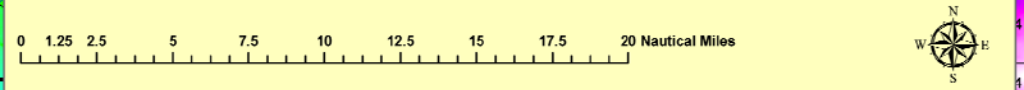
**Legend**

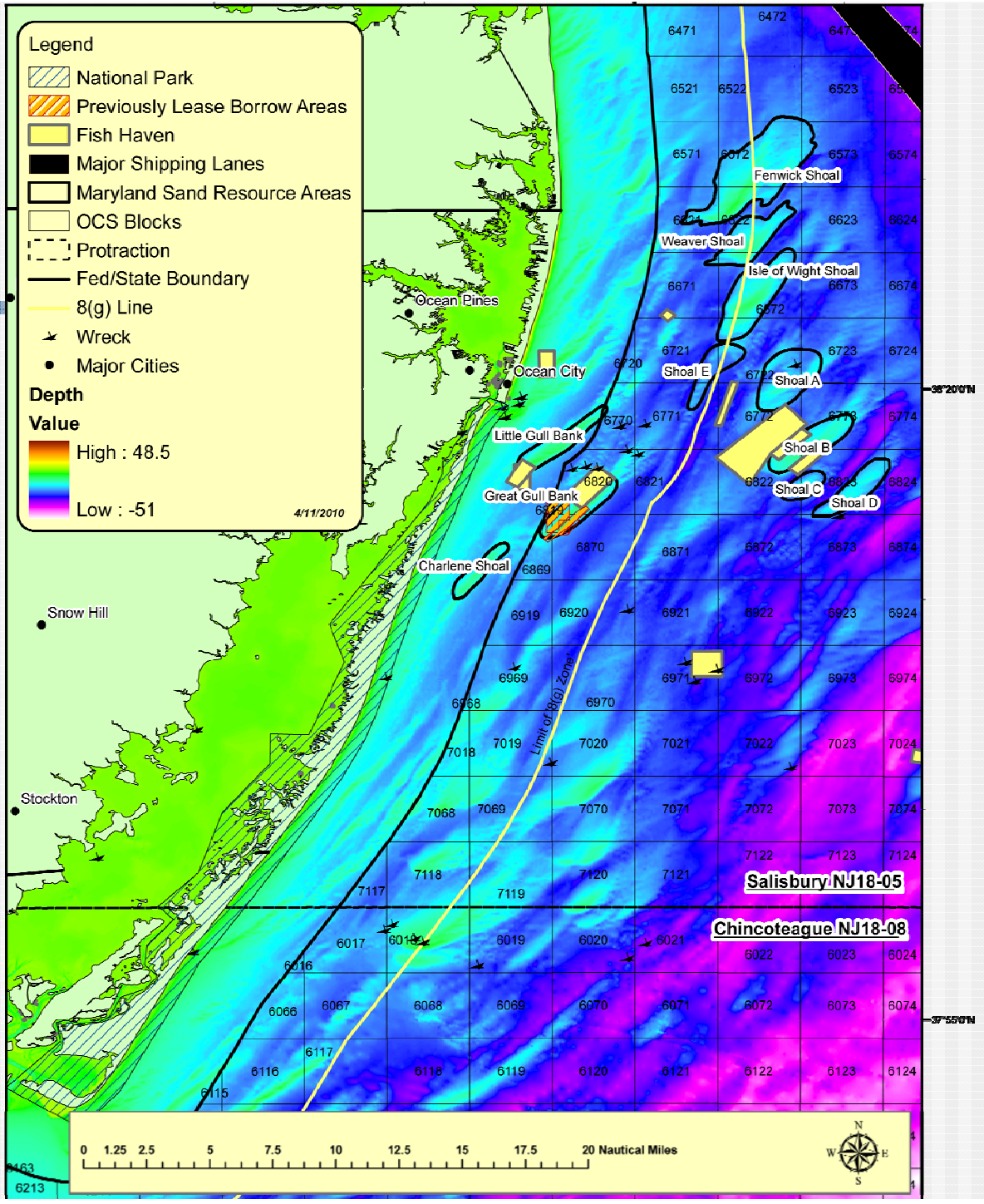
- National Park
- Previously Lease Borrow Areas
- Major Shipping Lanes
- Maryland Sand Resource Areas
- OCS Blocks
- Protraction
- Fed/State Boundary
- 8(g) Line
- Wreck
- Major Cities

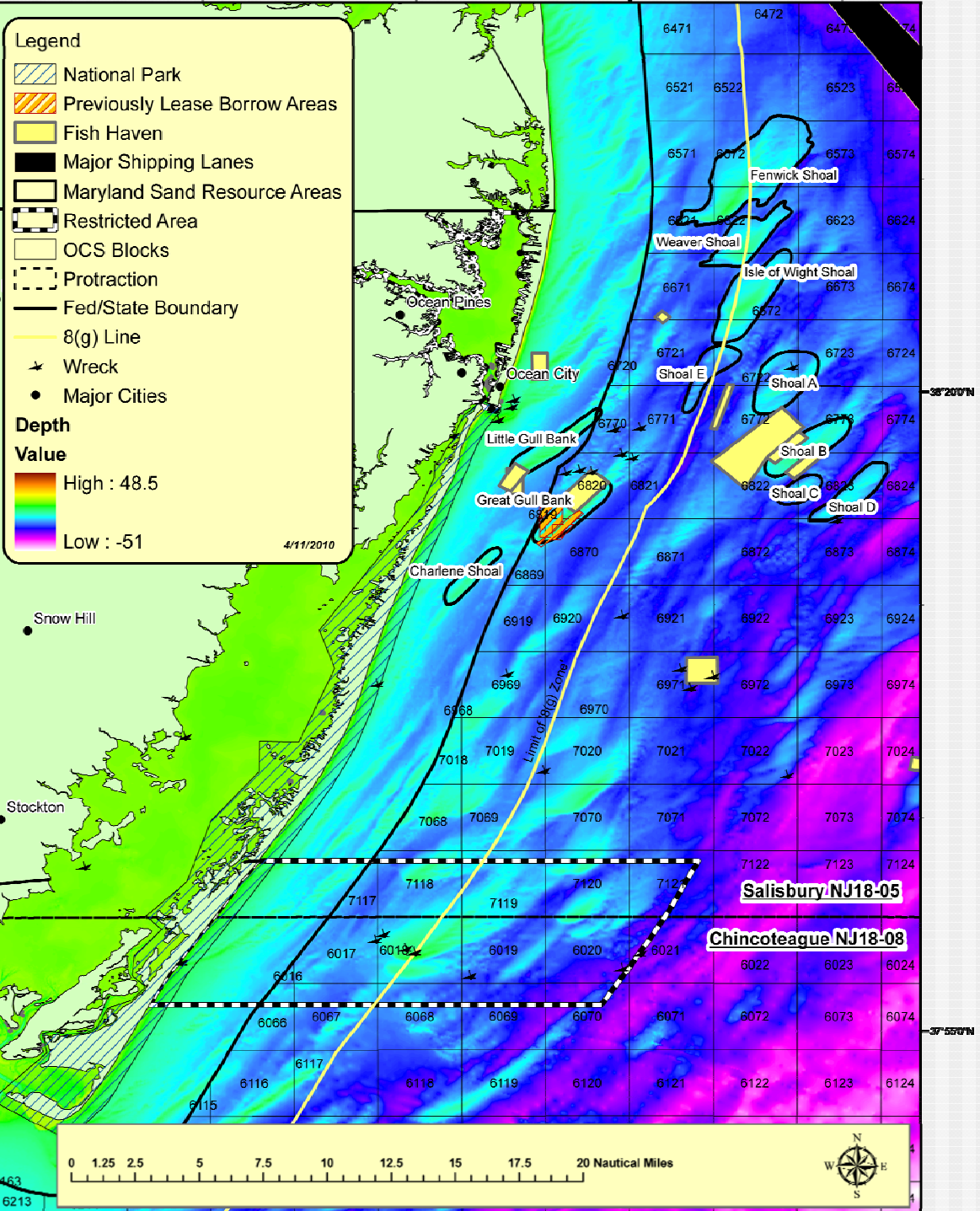
**Depth Value**

High : 48.5  
Low : -51

4/11/2010







Questions?

---