

1
2
3
4
5
6
7
8
9
10
11
12
13
14
15
16
17
18
19
20
21
22
23
24
25
26
27
28
29
30
31
32
33
34
35
36
37
38
39
40

16. Northeast

Convening Lead Authors

Radley Horton, Columbia University
Gary Yohe, Wesleyan University

Lead Authors

William Easterling, Pennsylvania State University
Robert Kates, University of Maine
Matthias Ruth, Northeastern University
Edna Sussman, Fordham University School of Law
Adam Whelchel, The Nature Conservancy
David Wolfe, Cornell University

Contributing Author

Fredric Lipschultz, NASA, Bermuda Institute of Ocean Sciences

Key Messages

1. **Heat waves, coastal flooding, and river flooding will pose a growing challenge to the region’s environmental, social, and economic systems. This will increase the vulnerability of the region’s residents, especially its most disadvantaged populations.**
2. **Infrastructure will be increasingly compromised by climate-related hazards, including sea level rise, coastal flooding, and intense precipitation events.**
3. **Agriculture, fisheries, and ecosystems will be increasingly compromised over the next century by climate change impacts. Farmers can explore new crop options, but these adaptations are not cost- or risk-free. Moreover, inequities exist in adaptive capacity, which could be overwhelmed by changing climate.**
4. **While a majority of states and a rapidly growing number of municipalities have begun to incorporate the risk of climate change into their planning activities, implementation of adaptation measures is still at early stages.**

Introduction

Sixty-four million people are concentrated in the Northeast. The high-density urban coastal corridor from Washington, D.C. north to Boston is one of the most developed environments in the world. It contains a massive, complex, and long-standing network of supporting infrastructure. The region is home to one of the world’s leading financial centers, the nation's capital, and many defining cultural and historical landmarks.

The region has a vital rural component as well. The Northeast includes large expanses of sparsely populated but ecologically and agriculturally important areas. Much of the Northeast landscape is dominated by forest, but the region also has grasslands, coastal zones, beaches and dunes, and wetlands, and it is known for its rich marine and freshwater fisheries. These natural areas are essential to recreation and tourism sectors and support jobs through the sale of timber,

1 maple syrup, and seafood. They also contribute important ecosystem services to broader
2 populations – protecting water supplies, buffering shorelines, and sequestering carbon in soils
3 and vegetation. The twelve Northeastern states have more than 180,000 farms, with \$17 billion
4 in annual sales.¹ The region’s ecosystems and agricultural systems are tightly interwoven, and
5 both are vulnerable to a changing climate.

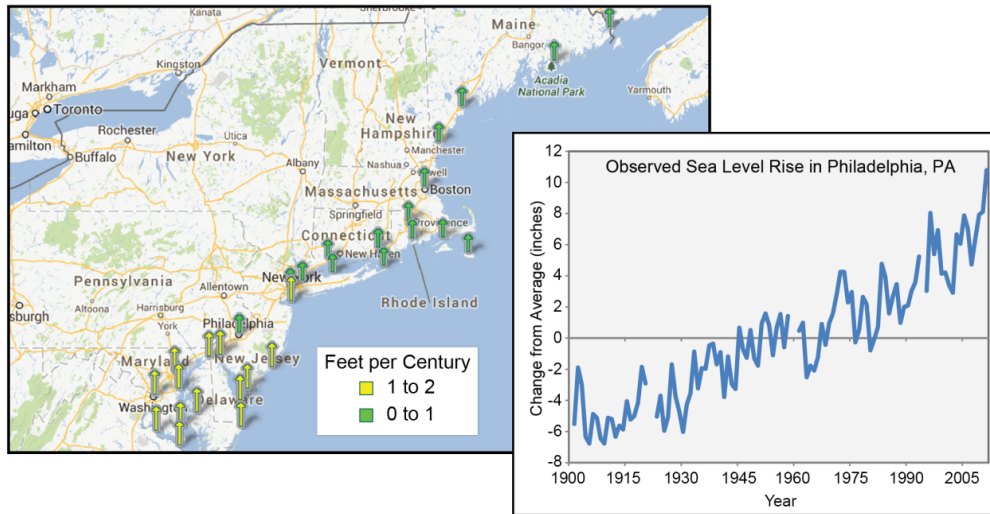
6 Although urban and rural regions in the Northeast have profoundly different built and natural
7 environments, both include populations that have been shown to be highly vulnerable to climate
8 hazards and other stresses. Both also depend on aging infrastructure that has already been
9 stressed by climate hazards including heat waves, as well as coastal and riverine flooding due to
10 a combination of sea level rise, storm surge, and extreme precipitation events.

11 The Northeast is characterized by a diverse climate.² Average temperatures in the Northeast
12 generally decrease to the north, with distance from the coast, and at higher elevations. Average
13 annual precipitation varies by about 20 inches throughout the Northeast with the highest amounts
14 observed in coastal and select mountainous regions. During winter, frequent storms bring bitter
15 cold and frozen precipitation, especially to the north. Summers are warm and humid, especially
16 to the south. The Northeast is often affected by extreme events such as ice storms, floods,
17 droughts, heat waves, hurricanes, and major storms in the Atlantic Ocean off the northeast coast,
18 referred to as nor’easters. However, variability is large in both space and time. For example,
19 parts of southern New England that experienced heavy snows in the cold season of 2010-2011
20 experienced little snow during the cold season of 2011-2012. Of course, even a season with low
21 totals can feature costly extreme events; snowfall during a 2011 pre-Halloween storm that hit
22 most of the Northeast, when many trees were still in leaf, knocked out power for up to 10 days
23 for thousands of households.

24 **Observed Climate Change**

25 Between 1895 and 2011, temperatures in the Northeast increased by almost 2°F (0.16°F per
26 decade), and precipitation increased by approximately five inches, or more than 10% (0.4 inches
27 per decade).³ Coastal flooding has increased due to a rise in sea level of approximately 1 foot
28 since 1900. This rate of sea level rise exceeds the global average of approximately 8 inches (See
29 Ch. 2: Our Changing Climate, Key Message 10; Ch. 25: Coasts), due primarily to land
30 subsidence⁴, although recent research suggests that changes in ocean circulation in the North
31 Atlantic – specifically, a weakening of the Gulf Stream – may also play a role.⁵

Sea Level is Rising



1
2
3
4
5
6
7
8
9

Figure 16.1: Sea level is Rising

Caption: (Top) Local sea level trends in the Northeast region. Length of time series for each arrow varies by tide gauge location. (Figure source: NOAA). (Bottom) Observed sea level rise in Philadelphia, PA, has significantly exceeded the global average of 8 inches over the past century, increasing the risk of impacts to critical urban infrastructure in low-lying areas. Over 100 years, sea level increased 1.2 feet (Data from Permanent Service for Mean Sea Level).

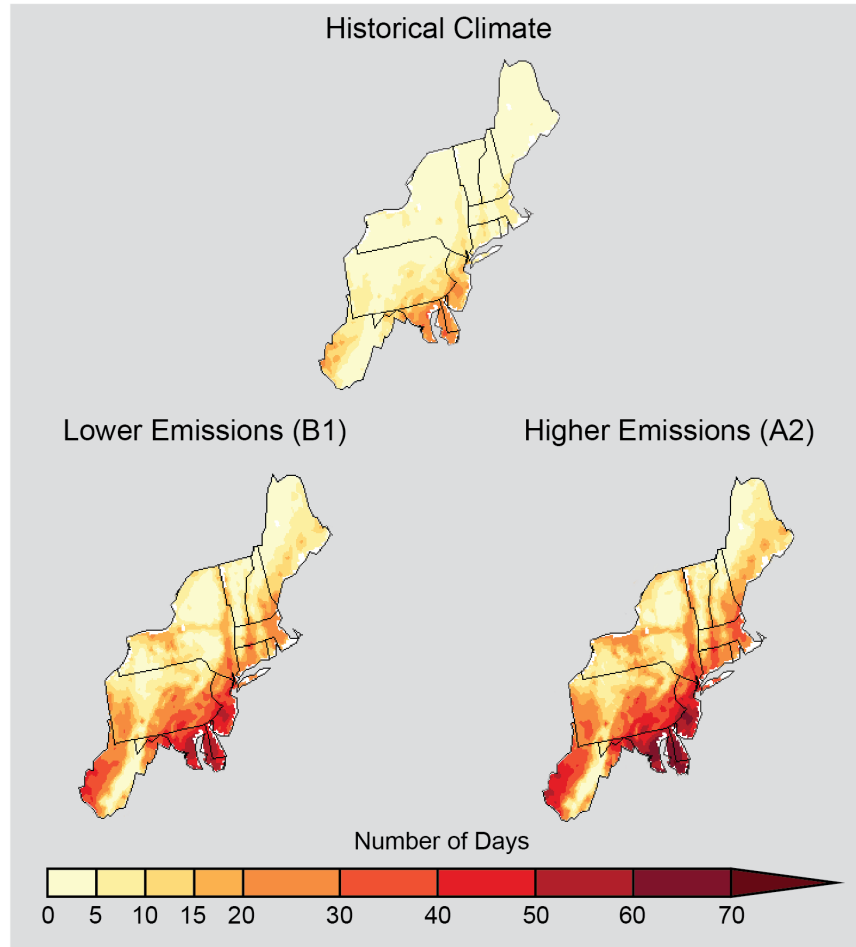
10 The Northeast has experienced a greater recent increase in extreme precipitation than any other
11 region in the U.S.; between 1958 and 2010, the Northeast saw more than a 70% percent increase
12 in the amount of precipitation falling in very heavy events (defined as the heaviest 1% of all
13 daily events) (See Ch. 2: Our Changing Climate, Figure 2.18).⁶

14 **Projected Climate Change**

15 Like most of the country, warming in the Northeast will be highly dependent on global emissions
16 of heat-trapping gases. If emissions continue to increase (as in the A2 scenario), warming of
17 4.5°F to 10°F is projected by the 2080s; if global emissions were reduced substantially (as in the
18 B1 scenario), projected warming ranges from about 3°F to 6°F by the 2080s.³

19 Under both emissions scenarios, the frequency, intensity, and duration of heat waves is expected
20 to increase, with larger increases under higher emissions (Ch. 2: Our Changing Climate). Much
21 of the southern portion of the region, including the majority of Maryland and Delaware, and
22 southwest West Virginia and New Jersey, are projected by mid-century to experience more than
23 60 additional days per year above 90°F compared to the end of last century under continued
24 increases in emissions (A2 scenario). This will affect the region’s vulnerable populations,
25 infrastructure, agriculture, and ecosystems.

Projected Increases in the Number of Days over 90°F



1

2 **Figure 16.2:** Projected Increases in the Number of Days over 90°F.

3 **Caption:** Projected increase in the number of days per year with a maximum temperature
 4 greater than 90°F averaged between 2041 and 2070, compared to 1971-2000, assuming
 5 continued increases in global emissions (A2 scenario) and greatly reduced future
 6 emissions (B1). (Figure source: NOAA NCDC / CICS-NC).

7 The frequency, intensity, and duration of cold air outbreaks is expected to decrease as the
 8 century progresses, although some research suggests that loss of Arctic sea ice could indirectly
 9 reduce this trend by modifying the jet stream and mid-latitude weather patterns.^{7,8}

10 Projections of precipitation changes are less certain than projections of temperature increases.³
 11 Winter and spring precipitation is projected to increase, especially but not exclusively in the
 12 northern part of the region (Ch. 2: Our Changing Climate, Key Messages 5 & 6).^{3,9} A range of

1 model projections for the end of this century under a high emissions scenario (A2), averaged
2 over the region, suggests about 5% to 20% (25th to 75th percentile of model projections) increases
3 in winter precipitation. Projected changes in summer and fall, and for the entire year, are
4 generally small at the end of the century compared to natural variations (Ch. 2: Our Changing
5 Climate, Key Message 5).³ The frequency of heavy downpours is projected to continue to
6 increase as the century progresses (Ch. 2: Our Changing Climate, Key Message 6). Seasonal
7 drought risk is also projected to increase in summer and fall as higher temperatures lead to
8 greater evaporation and earlier winter and spring snowmelt.¹⁰

9 Global sea levels are projected to rise between 1 to 4 feet by 2100 (Ch. 2: Our Changing Climate,
10 Key Message 10)¹¹ depending in large part on the extent to which the Greenland and the West
11 Antarctic Ice Sheets experience significant melting. Sea level rise along most of the coastal
12 Northeast is expected to exceed the global average rise due to local land subsidence, with the
13 possibility of even greater regional sea level rise if the Gulf Stream weakens as some models
14 suggest.^{5,12} Sea level rise of two feet, without any changes in storms, would more than triple the
15 frequency of dangerous coastal flooding throughout most of the Northeast.¹³

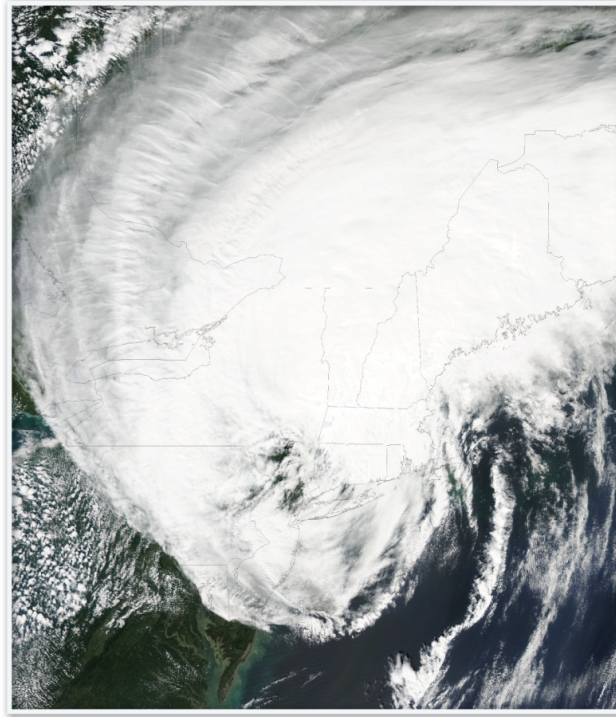
16 Although individual hurricanes cannot be directly attributed to climate change, Hurricanes Irene
17 and Sandy nevertheless provided “teachable moments” by demonstrating the region’s
18 vulnerability to extreme weather events and the potential for adaptation to reduce impacts.

19 **Box: Hurricane Vulnerability**

20 Two recent events contrast existing vulnerability to extreme events: Hurricane Irene, which
21 produced a broad swath of very heavy rain (greater than five inches in total and sometimes two
22 to three inches per hour in some locations) from southern Maryland to northern Vermont from
23 August 27 to 29, 2011; and Hurricane Sandy, which caused massive coastal damage from storm
24 surge and flooding along the northeast coast from October 28 to 30, 2012.

25 Rainfall associated with Irene led to hydrological extremes in the region. These heavy rains were
26 part of a broader pattern of wet weather preceding the storm (rainfall totals for August and
27 September exceeded 25 inches across much of the Northeast) that left the region predisposed to
28 extreme flooding from Irene; for example, the Schoharie Creek experienced a 500-year flood.¹⁴

Flooding and Hurricane Irene



1
2 **Figure 16.3:** Flooding and Hurricane Irene

3 **Caption:** Hurricane Irene over the Northeast on August 28, 2011. The storm, which
4 brought catastrophic flooding rains to parts of the Northeast, took 41 lives in the U.S.,
5 and the economic cost was estimated at \$16 billion.¹⁵ (Figure source: NASA).

6 In anticipation of Irene, the New York City mass transit system was shut down, and 2.3 million
7 coastal residents in Delaware, New Jersey, and New York faced mandatory evacuations.
8 However, it was the inland impacts, especially in upstate New York and in central and southern
9 Vermont, that were most severe. Ironically, many New York City residents fled to inland
10 locations, which were harder hit. Flash flooding washed out roads and bridges, undermined
11 railroads, brought down trees and power lines, flooded homes and businesses, and damaged
12 floodplain forests. In Vermont, more than 500 miles of roadways and approximately 200 bridges
13 were damaged, with estimated rebuilding costs of \$175 to \$250 million. Hazardous wastes were
14 released in a number of areas, and 17 municipal wastewater treatment plants were breached by
15 floodwaters. Agricultural losses included damage to barn structures and flooded fields of crops.
16 Many towns and villages were isolated for days due to infrastructure impacts from river flooding
17 (see also Ch. 5: Transportation, Box 5: Tropical Storm Irene Devastates Vermont Transportation
18 in August 2011).² Affected residents suffered from increased allergen exposure due to mold
19 growth in flooded homes and other structures and were exposed to potentially harmful chemicals
20 and pathogens in their drinking water. In the state of Vermont, cleaning up spills from above-

1 ground hazardous waste tanks cost an estimated \$1.75 million. Septic systems were also
2 damaged from high groundwater levels and river or stream erosion, including 17 septic system
3 failures in the state of Vermont.¹⁶

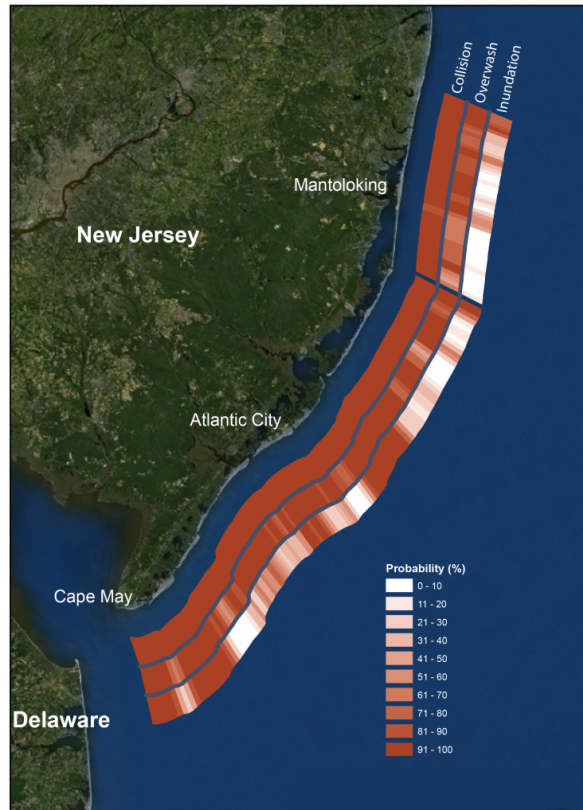
4 Sandy was responsible for more than 150 deaths, approximately half of which occurred in the
5 Northeast.¹⁷ Damages, concentrated in New Jersey, New York, and Connecticut, were estimated
6 at \$60 to \$80 billion, making Sandy the second most costly Atlantic Hurricane in history behind
7 Katrina.¹⁸ It is also estimated that 650,000 homes were damaged or destroyed, and that 8.5
8 million people were without power.¹⁷ Floodwaters inundated subway tunnels in New York City
9 (See also Ch. 5: Transportation, Box 2: Hurricane Sandy). Sandy also caused significant damage
10 to the electrical grid, and overwhelmed sewage treatment plants.¹⁷ In New Jersey, repairs to
11 damaged power and gas lines are expected to cost about \$1 billion and repairs to waste, water,
12 and sewer systems are expected to cost \$3 billion.

13 Many of these vulnerabilities to coastal flooding and sea level rise (Ch. 2: Our Changing
14 Climate, Key Message 10) and intensifying storms (Ch. 2: Our Changing Climate, Key Message
15 8 & 9) – including the projected frequency of flooding of tunnels and airports – were
16 documented as early as 2001 in a report developed in support of the 2000 National Climate
17 Assessment.¹⁹ Despite such reports, the observed vulnerability was a surprise to many coastal
18 residents, which suggests improved communication is needed.

19 Over the last decade, cities, states, and agencies in the New York Metropolitan Region took steps
20 to reduce their vulnerability to coastal storms.²⁰ In 2008, New York City convened a scientific
21 body of experts – the New York City Panel on Climate Change (NPCC) – and formed a Climate
22 Adaptation Task Force comprised of approximately 40 agencies, private sector companies, and
23 regional groups. A process, approach, and tools for climate change adaptation were developed
24 and documented in New York City^{10,21} and New York State.²² In 2012, the NPCC and Climate
25 Adaptation Task Force were codified into New York City law, a first among local governments
26 in the U.S., and a key step towards institutionalizing climate science, impact, and adaptation
27 assessment into long-term planning.²³

28 These initiatives led to adaptation efforts, including elevating infrastructure, restoring green
29 spaces, and developing evacuation plans that helped reduce damage and save lives during Irene
30 and Sandy (also see discussion of Hurricane Sandy in Ch. 11: Urban). As rebuilding and
31 recovery advances²³, decision-making based on current and projected risks from such events by a
32 full set of stakeholders and participants in the entire Northeast could dramatically improve
33 resilience across the region.

Coastal Flooding Along New Jersey's Shore



1
2
3
4
5
6
7
8
9
10
11
12
13

Figure 16.4: Coastal Flooding along New Jersey’s Shore

Caption: Predictions of coastal erosion prior to Sandy’s arrival provided the region’s residents and decision-makers with advance warning of potential vulnerability. The map shows three bands: collision of waves with beaches causing erosion on the front of the beach; overwash that occurs when water reaches over the highest point and erodes from the rear, which carries sand inland; and inundation, when the shore is severely eroded and new channels can form that lead to permanent flooding. The probabilities are based on the storm striking at high tide. For New Jersey, the model estimated that 21% of the shoreline had more than a 90% chance of experiencing inundation. These projections were realized, and made the New Jersey coastline even more vulnerable to the nor’easter that followed Hurricane Sandy by only 10 days. (Figure source: ESRI and USGS 2012²⁴).

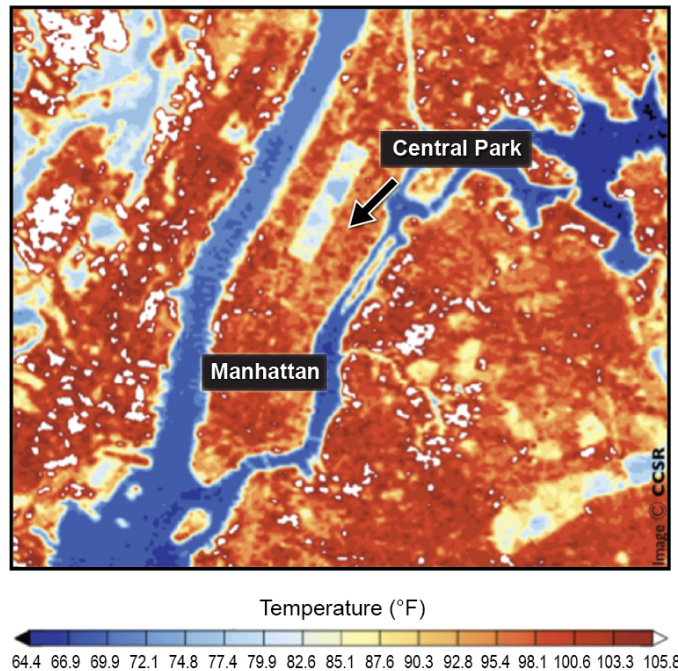
-- end box --

1 ***Climate Risks to People***

2 **Heat waves, coastal flooding, and river flooding will pose a growing challenge to the**
3 **region’s environmental, social, and economic systems. This will increase the vulnerability**
4 **of the region’s residents, especially its most disadvantaged populations.**

5 Urban residents have unique and multifaceted vulnerabilities to heat extremes. Northeastern
6 cities, with their abundance of concrete and asphalt and relative lack of vegetation, tend to have
7 higher temperatures than surrounding regions (the “urban heat island” effect). During extreme
8 heat events, nighttime temperatures in the region’s big cities are generally several degrees
9 higher²⁵ than surrounding regions, leading to increased heat-related death among those less able
10 to recover from the heat of the day.²⁶ Since the hottest days in the Northeast are often associated
11 with high concentrations of ground-level ozone and other pollutants²⁷, the combination of heat
12 stress and poor air quality can pose a major health risk to vulnerable groups: young children, the
13 elderly, and those with pre-existing health conditions including asthma.²⁸ Vulnerability is further
14 increased as key infrastructure, including electricity for potentially life-saving air conditioning, is
15 more likely to fail precisely when it is most needed – when demand exceeds available supply.
16 Significant investments may be required to insure that power generation keeps up with rising
17 demand associated with rising temperatures.²⁹ Finally, vulnerability to heat waves is not evenly
18 distributed throughout urban areas; outdoor versus indoor air temperatures, air quality, baseline
19 health, and access to air conditioning are all dependent on socioeconomic factors.²⁸
20 Socioeconomic factors that tend to increase vulnerability to such hazards include race and
21 ethnicity (being a minority), age (elderly, children), gender (female), socioeconomic status (low
22 income, status, or poverty), and education (low educational attainment). The condition of human
23 settlements (type of housing and construction, infrastructure, and access to lifelines) and the built
24 environment are also important determinants of socioeconomic vulnerability, especially given
25 the fact that these characteristics influence potential economic losses, injuries and mortality.³⁰

Urban Heat Island



1

2

Figure 16.5: Urban Heat Island

3

Caption: Surface temperatures in New York City on a summer’s day show the “urban heat island”, with temperatures in populous urban areas being approximately 10°F higher than the forested parts of Central Park. Dark blue reflects the colder waters of the Hudson and East Rivers. (Figure source: Center for Climate Systems Research, Columbia University).

4

5

6

7

8

Increased health-related impacts and costs, such as premature death and hospitalization due to even modest increases in heat, are predicted in the Northeast’s urban centers (Ch. 9: Human Health).³¹ One recent study projected that temperature changes alone would lead to a 50% to 91% increase in heat-related deaths in Manhattan by the 2080s (relative to a 1980s baseline).³² Increased ground-level ozone due to warming is projected to increase emergency department visits for ozone-related asthma in children (0 to 17 years) by 7.3% in 2020 (given the A2 scenario) relative to a 1990 baseline of approximately 650 visits in the New York metropolitan area.³³

9

10

11

12

13

14

15

16

Heat wave research has tended to focus on urban areas, but vulnerability to heat may also become a major issue in rural areas and small towns because air conditioning is currently not prevalent in parts of the rural Northeast where heat waves have historically been rare. Some areas of northern New England, near the Canadian border, are projected to shift from having less than five to more than 15 days per year over 90°F by the 2050s under the higher emissions

17

18

19

20

1 scenario (A2) of heat-trapping gases.³ It should be noted that winter heating needs, a significant
2 expense for many Northeastern residents, are likely to decrease as the century progresses.³⁴

3 The impacts of climate change on public health will extend beyond the direct effects of
4 temperature on human physiology. Changing distributions of temperature, precipitation, and
5 carbon dioxide could affect the potency of plant allergens³⁵ and there has been an observed
6 increase of 13 to 27 days in the ragweed pollen season at latitudes above 44°N.³⁵

7 Vector-borne diseases are an additional concern. Most occurrences of Lyme disease in United
8 States are in the Northeast, especially Connecticut.³⁶ While it is unclear how climate change will
9 impact Lyme disease³⁷, several studies in the Northeast have linked tick activity and Lyme
10 disease incidence to climate, specifically abundant late spring and early summer moisture.³⁸
11 West Nile Virus (WNV) is another vector-borne disease that may be influenced by changes in
12 climate. Suitable habitat for the Asian Tiger Mosquito, which can transmit West Nile and other
13 vector-borne diseases, is expected to increase in the Northeast from the current 5% to 16% in the
14 next two decades and from 43% to 49% by the end of the century, exposing more than 30 million
15 people to the threat of dense infestations by this species.³⁹

16 Many Northeastern cities, including New York, Boston, and Philadelphia, are served by
17 combined sewer systems that collect and treat both stormwater and municipal wastewater.
18 During heavy rain events, combined systems can be overwhelmed and untreated water may be
19 released into local water bodies. In Connecticut, the risk for contracting a stomach illness while
20 swimming significantly increased after a one inch precipitation event⁴⁰, and studies have found
21 associations between diarrheal illness among children and sewage discharge in Milwaukee.⁴¹
22 More frequent heavy rain events could therefore increase the incidence of waterborne disease.

23 Historical settlement patterns and on-going investment in coastal areas and along major rivers
24 combine to increase the vulnerabilities of people in the Northeast to sea level rise and coastal
25 storms. Of the Northeast's population of 64 million⁴², approximately 1.6 million people live
26 within the FEMA 100-year coastal flood zone, with the majority – 63% of those at risk – residing
27 in New York and New Jersey.⁴³ As sea levels rise, populations in the current 1-in-100-year
28 coastal flood zone (defined as the area with at least a 1% chance of experiencing a coastal flood
29 in a given year) will experience more frequent flooding, and populations that have historically
30 fallen outside the 1-in-100-year flood zone will find themselves in that zone. People living in
31 coastal flood zones are vulnerable to direct loss of life and injury associated with tropical storms
32 and nor'easters. Flood damage to personal property, businesses, and public infrastructure can
33 also result (See next section).

34 This risk is not limited to the 1-in-100-year flood zone; in the Mid-Atlantic part of the region
35 alone, estimates suggest that between 450,000 and 2.3 million people are at risk from a three foot
36 sea level rise⁴⁴, which is in the range of projections for this century.

37 Throughout the Northeast, populations are also concentrated along rivers and their flood plains.
38 In mountainous regions, including much of West Virginia and large parts of Pennsylvania, New
39 York, Vermont, and New Hampshire, more intense precipitation events (Ch. 2: Our Changing
40 Climate)³ will mean greater flood risk, particularly in valleys, where people, infrastructure, and
41 agriculture tend to be concentrated.

1

2 ***Stressed Infrastructure***

3 **Infrastructure will be increasingly compromised by climate-related hazards, including sea**
4 **level rise, coastal flooding, and intense precipitation events.**

5 Disruptions to services provided by public and private infrastructure in the Northeast both
6 interrupt commerce and threaten public health and safety (See also Ch. 11: Urban).⁴⁵ In New
7 York State, two feet of sea level rise is estimated to flood or render unusable (absent adaptation
8 investment) 212 miles of roads, 77 miles of rail, 3,647 acres of airport facilities, and 539 acres of
9 runways.⁴⁶ Port facilities, such as in Maryland (primarily Baltimore), also have flooding impact
10 estimates: 298 acres, or 32% percent of the overall port facilities in the state.⁴⁶ These impacts
11 have potentially significant economic ramifications. For example, in 2006 alone the Port of
12 Baltimore generated more than 50,200 jobs, \$3.6 billion in personal income, \$1.9 billion in
13 business revenues, and \$388 million in state/county/municipal tax.⁴⁷ The New York City Panel
14 on Climate Change highlighted a broader range of climate impacts on infrastructure sectors (see
15 Table 16.1).¹⁰ Although this study focused specifically on New York City, these impacts are
16 applicable throughout the region. Predicted impacts of coastal flooding on infrastructure were
17 largely borne out by Hurricane Sandy; sea level rise will only increase these vulnerabilities.

18 The more southern states within the region, including Delaware and Maryland, have a highly
19 vulnerable land area because of a higher rate of sea level rise and relatively flat coastlines
20 compared to the northern tier. The northern states, including Massachusetts, Rhode Island, and
21 Connecticut, have less land area exposed to a high inundation risk because of a lower relative sea
22 level rise and because of their relatively steep coastal terrain.⁴⁸ Still, low-lying coastal
23 metropolitan areas in New England have considerable infrastructure at risk. In Boston alone,
24 cumulative damage to buildings, building contents, and associated emergency costs could
25 potentially be as high as \$94 billion between 2000 and 2100, depending on the sea level rise
26 scenario and which adaptive actions are taken.⁴⁹

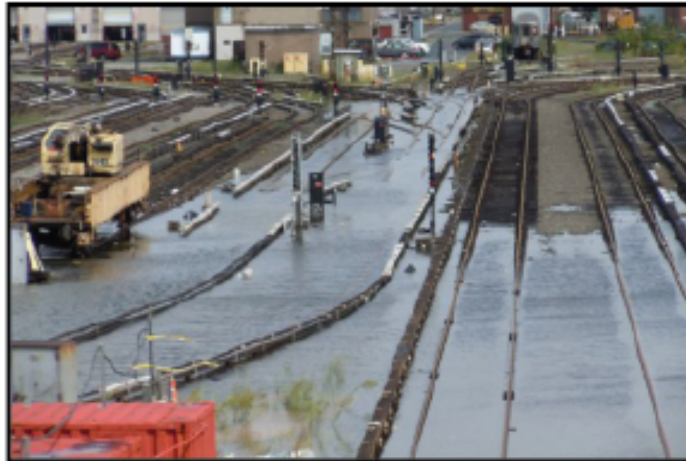
1 **Table 16.1.** *Impacts of sea level rise, coastal floods, and storms on critical coastal infrastructure*
 2 *by sector. Sources: Horton and Rosenzweig, (2010); Zimmerman and Faris, (2010); Ch. 25:*
 3 *Coasts.*^{50,51}

Communications	Energy	Transportation	Water and Waste
Higher average sea level			
<ul style="list-style-type: none"> • Increased salt water encroachment and damage to low-lying communications infrastructure not built to withstand saltwater exposure • Increased rates of coastal erosion and/or permanent inundation of low-lying areas, causing increased maintenance costs and shortened replacement cycles • Cellular tower destruction or loss of function 	<ul style="list-style-type: none"> • Increased coastal erosion rates and/or permanent inundation of low-lying areas, threatening coastal power plants • Increased equipment damage from corrosive effects of salt water encroachment, resulting in higher maintenance costs and shorter replacement cycles 	<ul style="list-style-type: none"> • Increased salt water encroachment and damage to infrastructure not built to withstand saltwater exposure • Increased coastal erosion rates and/or permanent inundation of low-lying areas, resulting in increased maintenance costs and shorter replacement cycles • Decreased clearance levels under bridges 	<ul style="list-style-type: none"> • Increased salt water encroachment and damage to water and waste infrastructure not built to withstand saltwater exposure • Increased release of pollution and contaminant runoff from sewer systems, treatment plants, brownfields, and waste storage facilities • Permanent inundation of low-lying areas, wetlands, piers, and marine transfer stations • Increased saltwater infiltration into freshwater distribution systems
More frequent and intense coastal flooding			
<ul style="list-style-type: none"> • Increased need for emergency management actions with high demand on communications infrastructure • Increased damage to communications equipment and infrastructure in low-lying areas 	<ul style="list-style-type: none"> • Increased need for emergency management actions • Exacerbated flooding of low-lying power plants and equipment, as well as structural damage to infrastructure due to wave action • Increased use of energy to control floodwaters • Increased number and duration of local outages due to flooded and corroded equipment 	<ul style="list-style-type: none"> • Increased need for emergency management actions • Exacerbated flooding of streets, subways, tunnel and bridge entrances, as well as structural damage to infrastructure due to wave action • Decreased levels of service from flooded roadways; increased hours of delay from congestion during street flooding episodes • Increased energy use for pumping 	<ul style="list-style-type: none"> • Increased need for emergency management actions • Exacerbated street, basement, and sewer flooding, leading to structural damage to infrastructure • Episodic inundation of low-lying areas, wetlands, piers, and marine transfer stations

4

1 In the transportation sector (See also Ch. 5: Transportation), many of the region’s key highways
 2 (including I-95) and rail systems (including Amtrak and commuter rail networks) span areas that
 3 are prone to coastal flooding. In addition to temporary service disruptions, storm surge flooding
 4 can severely undermine or disable critical infrastructure along coasts, including subway systems,
 5 wastewater treatment plants, and electrical substations. Saltwater corrosion can damage sensitive
 6 and critical electrical equipment, such as electrical substations for energy distribution and signal
 7 equipment for rail systems; corrosion also accelerates rust damage on rail lines. Salt water also
 8 threatens groundwater supplies and damages wastewater treatment plants.

Coney Island after Hurricane Irene



9

10 **Figure 16.6:** Coney Island after Hurricane Irene

11 **Caption:** Flooded subway tracks in Coney Island after Hurricane Irene. (Photo credit:
 12 Metropolitan Transportation Authority of the State of New York 2011).

13 *Agricultural and Ecosystem Impacts*

14 Agriculture, fisheries, and ecosystems will be increasingly compromised over the next century
 15 by climate change impacts. Farmers can explore new crop options, but these adaptations are not
 16 cost- or risk-free. Moreover, inequities exist in adaptative capacity, which could be overwhelmed
 17 by changing climate. Farmers in the Northeast are already experiencing consequences of climate
 18 change. In addition to direct crop damage from increasingly intense precipitation events, wet
 19 springs can delay planting for grain and vegetables in New York, for example, and subsequently
 20 delay harvest dates and reduce yields.⁵² This is an issue for agriculture nationally⁵³, but is
 21 particularly acute for the Northeast where heavy rainfall events have increased more than in any
 22 other region of the country (Ch. 2: Our Changing Climate, Key Message 6).⁶ In the future,
 23 farmers may also face too little water in summer to meet increased crop water demand as
 24 summers become hotter and growing seasons lengthen.^{54,55} Increased frequency of summer heat
 25 stress is also projected, which can negatively affect crop yields and milk production.⁵⁶

1 Despite a trend toward warmer winters, the risk of frost and freeze damage continues, and has
2 paradoxically increased over the past decade (See also Ch. 8: Ecosystems). Risk of frost and
3 freeze damage continues, and these risks are exacerbated for perennial crops in years with
4 variable winter temperatures. For example, midwinter-freeze damage cost New York Finger
5 Lakes wine grape growers millions of dollars in losses in the winters of 2003 and 2004.⁵⁷ This
6 was likely due to de-hardening of the vines during an unusually warm December, which
7 increased susceptibility to cold damage just prior to a subsequent hard freeze. Another avenue
8 for cold damage, even in a relatively warm winter, is when there is an extended warm period in
9 late winter or early spring causing premature leaf-out or bloom, followed by a damaging frost
10 event, as occurred throughout the Northeast in 2007⁵⁸, and again in 2012 when apple, grape,
11 cherry, and other fruit crops were hard hit.⁵⁹

12 Increased weed and pest pressure associated with longer growing seasons and warmer winters
13 will be an increasingly important challenge; there are already examples of earlier arrival and
14 increased populations of some insect pests such as corn earworm.⁵⁶ Furthermore, many of the
15 most aggressive weeds, such as kudzu, benefit more than crop plants from higher atmospheric
16 carbon dioxide, and become more resistant to herbicide control.⁶⁰ Many weeds respond better
17 than most cash crops to increasing carbon dioxide concentrations, particularly “invasive” weeds
18 with the so-called C₃ photosynthetic pathway, and with rapid and expansive growth patterns,
19 including large allocations of below-ground biomass, such as roots.⁶¹ Research also suggests that
20 glyphosate (for example, Roundup), the most widely-used herbicide in the United States, loses
21 its efficacy on weeds grown at the increased carbon dioxide levels likely to occur in the coming
22 decades.⁶² To date, all weed/crop competition studies where the photosynthetic pathway is the
23 same for both species favor weed growth over crop growth as carbon dioxide is increased.⁶⁰

24 Effects of rising temperatures on the Northeast’s ecosystems have already been clearly observed
25 (See also Ch. 8: Ecosystems). Further, changes in species distribution by elevation are occurring;
26 a Vermont study found an upslope shift of 299 to 390 feet in the boundary between northern
27 hardwoods and boreal forest on the western slopes of the Green Mountains between 1964 and
28 2004.⁶³ Wildflowers⁶⁴ and woody perennials are blooming earlier⁶⁵ and migratory birds are
29 arriving sooner.⁶⁶ Because species differ in their ability to adjust, asynchronies (like a mismatch
30 between key food source availability and migration patterns) can develop, increasing species and
31 ecosystem vulnerability. Several bird species have expanded their ranges northward⁶⁷ as have
32 some invasive insect species, such as the hemlock woolly adelgid⁶⁸, which has devastated
33 hemlock trees. Warmer winters and less snow cover in recent years have contributed to increased
34 deer populations⁶⁹ that degrade forest understory vegetation.⁷⁰

35 As ocean temperatures continue to rise, the range of suitable habitat for many commercially
36 important fish and shellfish species is projected to shift northward. For example, cod and lobster
37 fisheries south of Cape Cod are projected to have significant declines.⁷¹ Although suitable
38 habitats will be shrinking for some species (such as cold water fish like brook trout) and
39 expanding for others (such as warm water fish like bass), it is difficult to predict what proportion
40 of species will be able to move or adapt as their optimum climate zones shift.⁷² As each species
41 responds uniquely to climate change, disruptions of important species interactions (plants and
42 pollinators, predators and prey) can be expected. For example, it is uncertain what forms of
43 vegetation will move into the Adirondack Mountains when the suitable habitat for spruce-fir

1 forests disappears.⁷³ Increased productivity of some northern hardwood trees in the Northeast is
2 projected (due to longer growing seasons and assuming a significant benefit from higher
3 atmospheric carbon dioxide), but summer drought and other extreme events may offset potential
4 productivity increases.⁷⁴ Range shifts in traditional foods gathered from the forests by Native
5 American communities, such as Wabanaki berries in the Northeast, can have negative health and
6 cultural impacts (Ch. 12: Indigenous Peoples).⁷⁵

7 In contrast, many insect pests, pathogens, and invasive plants like kudzu appear to be highly and
8 positively responsive to recent and projected climate change.⁷⁶ Their expansion will lead to an
9 overall loss of biodiversity, function, and resilience of some ecosystems.

10 The Northeast's coastal ecosystems and the species that inhabit them are highly vulnerable to
11 rising seas (See also Ch. 25: Coasts, Key Message 4). Beach and dune erosion, both a cause and
12 effect of coastal flooding, is also a major issue in the Northeast.^{77,78} Since the early 1800s, there
13 has been an estimated 39% decrease in marsh coverage in coastal New England; in the
14 metropolitan Boston area, marsh coverage is estimated to be less than 20% of its late 1700s
15 value.⁷⁹ Impervious urban surfaces and coastal barriers such as seawalls limit the ability of
16 marshes to expand inland as sea levels rise (Nicholls et al. 1999; Kennedy et al. 2002; Scavia et
17 al. 2002; Titus et al. 2009; Bromberg and Burtness 2005).

18 **Box: The Chesapeake Bay**

19 The Chesapeake Bay is the largest U.S. estuary, with a drainage basin that extends over six
20 states. It is a critical and highly integrated natural and economic system threatened by changing
21 land use patterns and a changing climate – including sea level rise, higher temperatures, and
22 more intense precipitation events. The ecosystem has a central role in the economy, including
23 providing sources of food for people and the region's other inhabitants, and cooling water for the
24 energy sector. It also provides critical ecosystem services.

25 As sea levels rise, the Chesapeake Bay region is expected to experience an increase in coastal
26 flooding and drowning of estuarine wetlands. The lower Chesapeake Bay is especially at risk due
27 to high rates of sinking land (known as subsidence).⁸⁰ Climate change and sea level rise are also
28 likely to cause a number of ecological impacts, including declining water quality and clarity,
29 increases in harmful algae and low oxygen (hypoxia) events, decreases in a number of species
30 including eelgrass and seagrass beds, and changing interactions among trophic levels (positions
31 in the food chain) leading to an increase in subtropical fish and shellfish species in the bay.⁸¹

32 **Figure 16.7**

33 *NOTE: Photos of flooding in Holland Island to be inserted*

34 – end box --

35

1 ***Planning and Adaptation***

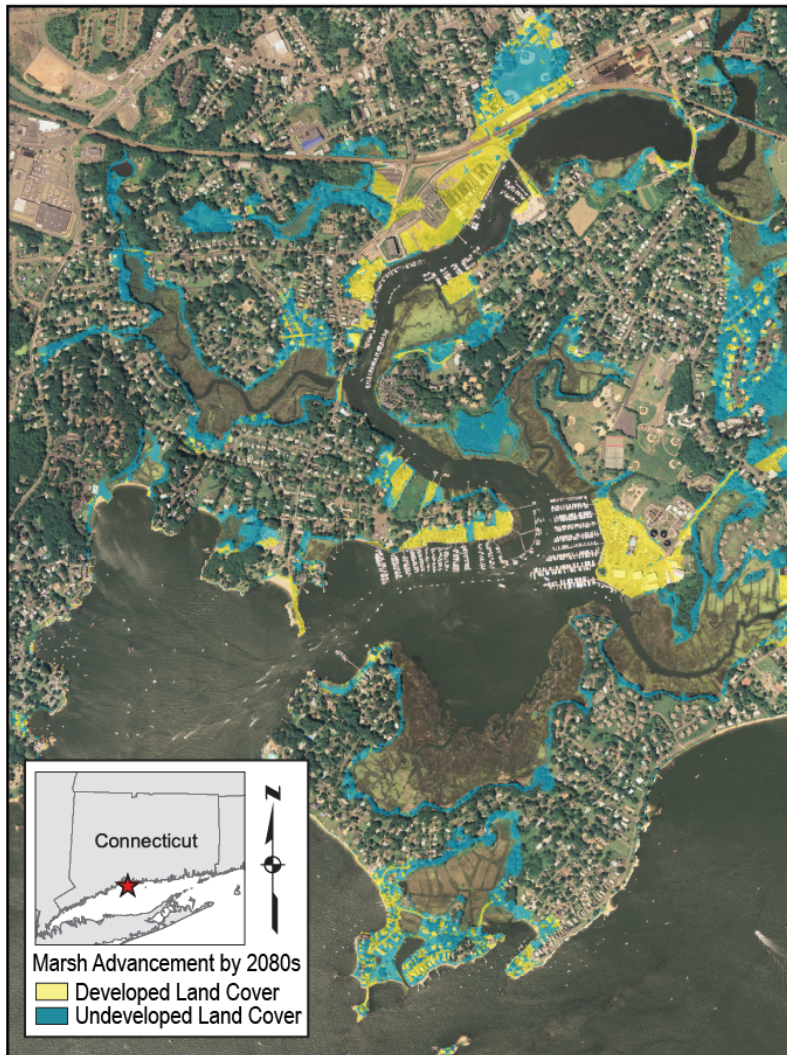
2 **While a majority of states and a rapidly growing number of municipalities have begun to**
3 **incorporate the risk of climate change into their planning activities, implementation of**
4 **adaptation measures is still at early stages.**

5 Of the 12 states in the Northeast, 11 have developed adaptation plans for several sectors and 10
6 have released, or plan to release, statewide adaptation plans.⁸² Given the interconnectedness of
7 climate change impacts and adaptation, multi-state coordination could help to ensure that
8 information is shared efficiently and that emissions reduction and adaptation strategies do not
9 operate at cross-purposes.

10 Local and state governments in the Northeast have been leaders and incubators in utilizing legal
11 and regulatory opportunities to foster climate change policies.⁸³ The Regional Greenhouse Gas
12 Initiative (RGGI) was the first market-based regulatory program in the U.S. aimed at reducing
13 greenhouse gas emissions; it is a cooperative effort among nine northeastern states.⁸⁴
14 Massachusetts became the first state to officially incorporate climate change impacts into its
15 environmental review procedures by adopting legislation that directs agencies to “consider
16 reasonably foreseeable climate change impacts, including additional greenhouse gas emissions,
17 and effects, such as predicted sea level rise.”⁸⁵ In addition, Maine, Massachusetts, and Rhode
18 Island have each adopted some form of “rolling easement” to ensure that wetlands or dunes
19 migrate inland as sea level rises and reduce the risk of loss of life and property (CCSP 2009,
20 page 159).⁴⁴

21
22
23
24
25
26
27

Connecticut Coastline and Expanding Salt Marshes



1

2

Figure 16.8: Connecticut Coastline and Expanding Salt Marshes

3

4

5

6

7

8

Caption: The Nature Conservancy’s adaptation decision-support tool (www.coastalresilience.org)⁸⁶ depicts building-level impacts due to inundation (developed land cover, yellow areas) and potential marsh advancement zones (undeveloped land cover – currently forest, grass, and agriculture – blue areas) using downscaled sea level rise projections (52" by 2080s depicted) along the Connecticut and New York coasts. (Source: Ferdaña et al. 2010, Beck et al. 2013).^{87,88}

9

10

Northeast cities have employed a variety of mechanisms to respond to climate change, including land use planning, provisions to protect infrastructure, regulations related to the design and

1 construction of buildings, and emergency preparation, response, and recovery.⁸⁹ While
2 significant progress has been made, local governments still face limitations of legal authority,
3 geographic jurisdiction, and resource constraints that could be addressed through effective
4 engagement and support from higher levels of government.

5 Keene, New Hampshire, has been a pilot community for ICLEI's Climate Resilient Communities
6 program for adaptation planning⁹⁰ – a process implemented through innovative community
7 engagement methods.⁹¹ The Cape Cod Commission is another example in New England; the
8 Commission has drafted model ordinances to help communities incorporate climate into zoning
9 decision-making. Further south, New York City has taken numerous steps to implement
10 PlaNYC, a far-reaching sustainability plan for the city, including amending the construction code
11 and the zoning laws and the implementation of measures focused on developing adaptation
12 strategies to protect the City's public and private infrastructure from the effects of climate
13 change²³; some major investments in protection have even been conceptualized.

Storm Surge Barrier



14

15 **Figure 16.9:** Storm Surge Barrier

16 **Caption:** Conceptual Design of a Storm Surge Barrier in NYC. (Figure source: Jansen
17 and Dircke 2009).

18 One widely used adaptation-planning template is the eight-step iterative approach developed by
19 the New York City Panel on Climate Change; it was highlighted in the contribution of the
20 National Academy of Science's Adaptation Panel to America's Climate Choices and adopted by
21 the Committee on America's Climate Choices. It describes a procedure that decision-makers at
22 all levels can use to design a flexible adaptation pathway to address infrastructure and other
23 response issues through inventory and assessment of risk. The key, with respect to infrastructure,
24 is to link adaptation strategies with capital improvement cycles and adjustment of plans to

1 incorporate emerging climate projections^{10,92} – but the insights are far more general than that
2 (See the Adaptation Panel Report).⁹³

3 In most cases, adaptation requires information and tools coupled to a decision-support process
4 steered by strong leadership, and there are a growing number of examples in the Northeast. At
5 the smaller, municipal scale, coastal pilot projects in Maryland⁹⁴, Delaware⁹⁵, New York and
6 Connecticut⁸⁸ are underway.

7 Research and outreach efforts are underway in the region to help farmers find ways to cope with
8 a rapidly changing climate, take advantage of a longer growing season, and reduce greenhouse
9 gas emissions^{55,96}, but unequal access to capital and information for strategic adaptation and
10 mitigation remain a challenge. Financial barriers can constrain farmer adaptation.⁹⁷ Even
11 relatively straightforward adaptations such as changing varieties are not always a low-cost
12 option. Seed for new stress-tolerant varieties is sometimes expensive or regionally unavailable,
13 new varieties often require investments in new planting equipment, or require adjustment in a
14 wide range of farming practices. Investment in irrigation and drainage systems are relatively
15 expensive options, and a challenge for farmers will be determining when the frequency of yield
16 losses due to summer water deficits or flooding has or will become frequent enough to warrant
17 such capital investments.

18 Regional activities in the Northeast are also being linked to federal efforts. For example,
19 NASA’s Agency-wide Climate Adaptation Science Investigator Workgroup (CASI) brings
20 together NASA facilities managers with NASA climate scientists in local Climate Resilience
21 Workshops. This approach was in evidence at the Goddard Space Flight Center in Maryland,
22 where scientists helped institutional managers address energy and stormwater management
23 vulnerabilities.

24 **Box: Maine's Culverts: An Adaptation Case Study**

25 Culverts and the structures they protect are receiving increasing attention, since they are
26 vulnerable to damage during the types of extreme precipitation events that are occurring with
27 increasing frequency in the Northeast (Ch. 2: Our Changing Climate, Key Message 6; Ch. 5:
28 Transportation). For instance, severe storms in the Northeast that were projected in the 1950s to
29 occur only once in 100 years, now are projected to occur once every 60 years.⁹⁸

30 The Maine Department of Transportation manages more than 97,000 culverts, but individual
31 property owners or small towns manage even more; Scarborough, Maine, for example, has 2,127
32 culverts. When 71 town managers and officials in coastal Maine were surveyed as part of the
33 statewide Sustainability Solutions Initiative, culverts, with their 50 to 65 year expected lifespan,
34 emerged atop a wish list for help in adapting to climate change.⁹⁹

35 A research initiative that mapped decisions by town managers in Maine to sources of climate
36 information, engineering design, mandated requirements, and calendars identified the complex,
37 multi-jurisdictional challenges of widespread adaptation for even such seemingly simple actions
38 as using larger culverts to carry water from major storms.⁹⁹ To help towns adapt culverts to
39 expected climate change over their lifetimes, the Sustainability Solutions Initiative is creating
40 decision tools to map culvert locations, schedule maintenance, estimate needed culvert size, and
41 analyze replacement needs and costs. -- **end box** --

1 **Traceable Accounts**

2 **Chapter 16: Northeast Region**

3 **Key Message Process:** Results of the Northeast Regional Climate assessment workshop that was held on November
 4 17th and 18th, 2011 at Columbia University, with approximately 60 attendees, were critically important in our
 5 assessment. The workshop was the beginning of the process that led to the foundational Technical Input Report
 6 (TIR).² That 313-page report consisted of seven chapters by 13 Lead authors and more than 60 authors in total.
 7 Public and private citizens or institutions who service and anticipate a role in maintaining support for vulnerable
 8 populations in Northeast cities and communities indicated that they are making plans to judge the demand for
 9 adaptation services. These stakeholder interactions were surveyed and engaged in the preparation of this chapter. We
 10 are confident that the TIR authors made a vigorous attempt to engage various agencies at the state level and non-
 11 governmental organizations (NGOs) that have broader perspectives.

12 The author team engaged in multiple technical discussions via teleconferences, which included careful review of the
 13 foundational TIR² and approximately 50 additional technical inputs provided by the public, as well as the other
 14 published literature, and professional judgment. Discussions were followed by expert deliberation of draft key
 15 messages by the authors, and targeted consultation with additional experts by the lead author of each key message.

Key message #1/4	Heat waves, coastal flooding, and river flooding will pose a growing challenge to the region’s environmental, social, and economic systems. This will increase the vulnerability of the region’s residents, especially its most disadvantaged populations.
Description of evidence base	<p>The key message and supporting text summarizes extensive evidence documented in the Northeast Technical Input Report.² Nearly 50 Technical Input reports, on a wide range of topics, were also received and reviewed as part of the Federal Register Notice solicitation for public input.</p> <p>Numerous peer-reviewed publications (including many that are not cited) describe increasing hazards associated with sea level rise and storm surge, heat waves, and intense precipitation and river flooding for the Northeast. For sea level rise (SLR), the authors relied on the NCA SLR scenario¹¹ and research by the authors on the topic (for example,⁵⁰). Recent work²⁵ summarizes the literature on heat islands and extreme events. For a recent study on climate in the Northeast³, the authors worked closely with the region’s state climatologists on both the climatology and projections.</p> <p>The authors also considered many recent peer-reviewed publications^{28,31,33,43} that describe how human vulnerabilities to climate hazards in the region can be increased by socio-economic and other factors. Evaluating coupled multi-system vulnerabilities is an emerging field; as a result, additional sources including white papers³ have informed this key message as well.</p> <p>To capture key issues, concerns and opportunities in the region, various regional assessments were also consulted, such as PlaNYC (http://www.nyc.gov/html/planyc2030) and Boston’s Climate Plan (http://www.cityofboston.gov/Images/Documents/A%20Climate%20of%20Progress%20-%20CAP%20Update%202011_tcm3-25020.pdf).</p>
New information and remaining uncertainties	<p>Important new evidence (cited above) confirmed many of the findings from a prior Northeast assessment⁹ (See http://nca2009.globalchange.gov/northeast).</p> <p>The evidence included results from improved models and updated observational data (e.g.,^{58,11}). The current assessment included insights from stakeholders collected in a series of distributed engagement meetings that confirm its relevance</p>

	<p>and significance for local decision-makers; examples include a Northeast Listening Session in West Virginia, a kickoff meeting in New York City, and New York City Panel on Climate Change meetings.</p> <p>There is wide diversity of impacts across the region driven by both exposure and sensitivity that are location and socio-economic context specific. Future vulnerability will be influenced by changes in demography, economics, and policies (development and climate driven) that are difficult to predict and dependent on international and national considerations. Another uncertainty is the potential for adaptation strategies (and to a lesser extent mitigation) to reduce these vulnerabilities.</p> <p>There are also uncertainties associated with the character of the interconnections among systems, and the positive and negative synergies. For example, a key uncertainty is how systems will respond during extreme events, and how people will adjust their short- to long-term planning to take account of a dynamic climate. Such events are, by definition, manifestations of historically rare and therefore relatively undocumented climatology. Nonetheless, these events are correlated, when considered holistically, with climate change driven to some degree by human interference with the climate system. These are the uncertainties in exposure.</p> <p>There are also uncertainties associated with sensitivity to future changes driven to some (potentially significant) degree by non-climate stressors, including background health of the human population and development decisions. Other uncertainties include how much effort will be put into making systems more resilient, and the success of these efforts. Another critical uncertainty is associated with the climate system itself.</p>
<p>Assessment of confidence based on evidence</p>	<p>Given the evidence base and remaining uncertainties, confidence is:</p> <p>Very high for sea level rise and coastal flooding as well as heat waves.</p> <p>High for intense precipitation events and riverine flooding.</p> <p>Very high for both added stresses on environmental, social, and economic systems and for increased vulnerability, especially for populations that are already most disadvantaged.</p>

1

CONFIDENCE LEVEL			
Very High	High	Medium	Low
<p>Strong evidence (established theory, multiple sources, consistent results, well documented and accepted methods, etc.), high consensus</p>	<p>Moderate evidence (several sources, some consistency, methods vary and/or documentation limited, etc.), medium consensus</p>	<p>Suggestive evidence (a few sources, limited consistency, models incomplete, methods emerging, etc.), competing schools of thought</p>	<p>Inconclusive evidence (limited sources, extrapolations, inconsistent findings, poor documentation and/or methods not tested, etc.), disagreement or lack of opinions among experts</p>

2

3

1 **Chapter 16: Northeast Region**

2 **Key Message Process:** See key message #1.

Key message #2/4	Infrastructure will be increasingly compromised by climate-related hazards, including sea level rise, coastal flooding, and intense precipitation events.
Description of evidence base	<p>The key message summarizes extensive evidence documented in the Northeast Technical Input Report (TIR).² Technical Input reports (48) on a wide range of topics were also received and reviewed as part of the Federal Register Notice solicitation for public input.</p> <p>To capture key issues, concerns and opportunities in the region, various regional assessments were also consulted, such as PlaNYC (http://www.nyc.gov/html/planyc2030) and Boston’s Climate Plan (http://www.cityofboston.gov/Images_Documents/A%20Climate%20of%20Progress%20-%20CAP%20Update%202011_tcm3-25020.pdf).</p> <p>In addition, a report by the Department of Transportation⁴⁶ provided extensive documentation that augmented an NGO report.¹⁰⁰ Other sources that support this key message include Horton and Rosenzweig, 2010, Rosenzweig et al. 2011, and Zimmerman and Faris, 2010.^{22,50,51}</p>
New information and remaining uncertainties	<p>Important new evidence (cited above) confirmed many of the findings from the prior Northeast assessment: (http://nca2009.globalchange.gov/northeast) which informed the prior NCA.⁹</p> <p>The new sources above relied on improved models that have been calibrated to new observational data across the region.</p> <p>It is important to note, of course, that there is wide diversity across the region because both exposure and sensitivity are location and socio-economic context specific. The wisdom derived from many previous assessments by the National Academy of Sciences, the New York Panel on Climate Change, and the prior National Climate Assessments^{9,10,93} indicates that future vulnerability at any specific location will be influenced by changes in demography, economics, and policy. These changes are difficult to predict at local scales even as they also depend on international and national considerations. The potential for adaptation strategies (and to a lesser extent mitigation) to reduce these vulnerabilities is yet another source of uncertainty that expands as the future moves into the middle of this century.</p>
Assessment of confidence based on evidence	<p>We have very high confidence in projected sea level rise and increased coastal flooding, and high confidence for increased intense precipitation events. This assessment of confidence is based on our review of the literature and submitted input, and has been defended internally and externally in conversation with local decision-makers and representatives of interested NGOs, as well as the extensive interactions with stakeholders across the region reported in the Northeast TIR.²</p> <p>Very high confidence that infrastructure will be increasingly compromised, based on the clear evidence of impacts on current infrastructure from hazards such as Hurricane Irene, and from the huge deficit of needed renewal identified by a diverse engineering community.⁴⁵</p>

3

CONFIDENCE LEVEL			
Very High	High	Medium	Low
Strong evidence (established theory, multiple sources, consistent results, well documented and accepted methods, etc.), high consensus	Moderate evidence (several sources, some consistency, methods vary and/or documentation limited, etc.), medium consensus	Suggestive evidence (a few sources, limited consistency, models incomplete, methods emerging, etc.), competing schools of thought	Inconclusive evidence (limited sources, extrapolations, inconsistent findings, poor documentation and/or methods not tested, etc.), disagreement or lack of opinions among experts

1

2

DRAFT

1 **Chapter 16: Northeast Region**

2 **Key Message Process:** See key message #1.

Key message #3/4	Agriculture, fisheries, and ecosystems will be increasingly compromised over the next century by climate change impacts. Farmers can explore new crop options, but these adaptations are not cost- or risk-free. Moreover, inequities exist in adaptative capacity, which could be overwhelmed by changing climate.
Description of evidence base	<p>The key message summarizes extensive evidence documented in the Northeast Technical Input Report.² Technical Input reports (48) on a wide range of topics were also received and reviewed as part of the Federal Register Notice solicitation for public input. The Traceable Account for key message 1 provides the evidence base on sea level rise, flooding and precipitation.</p> <p>Various regional assessments were also consulted to capture key issues, concerns and opportunities in the region with particular focus on managed (agriculture, fisheries) and unmanaged (ecosystems) systems (for example,^{55,69,77}).</p> <p>Species and ecosystem vulnerability have been well documented historically in numerous peer-reviewed papers in addition to the ones cited in the TIR.² There have also been many examples of impacts on agriculture of climate variability and change in the Northeast (for example,⁵⁶). Most note that there is potential for significant benefits associated with climate changes, to partially offset expected negative outcomes for these managed systems (for example,⁵³)</p>
New information and remaining uncertainties	<p>Important new evidence (cited above, plus Najjar et. al. 2010⁸¹, for example) confirmed many of the findings from the prior Northeast assessment (http://nca2009.globalchange.gov/northeast) which informed the prior NCA.⁹</p> <p>These new sources also relied on improved models that have been calibrated to new observational data across the region.</p> <p>Agriculture, fisheries, and ecosystems in the Northeast are strongly linked to climate change and to other changes occurring outside the region and beyond the boundaries of the United States. These changes can influence the price of crops and agricultural inputs such as fertilizer, for example, as well as the abundance of ecosystem and agricultural pests, and the abundance and range of fish stocks. Other uncertainties include imprecise understandings of how complex ecosystems will respond to climate and non-climate induced changes, and the extent to which organisms may be able to adapt to a changing climate.</p>
Assessment of confidence based on evidence	<p>Based on our assessment and defended among ourselves and with external experts, we have very high confidence for climate impacts (especially sea level rise and storm surge) on ecosystems; and we have high confidence for climate impacts on agriculture (reduced to some degree, compared to our level of confidence about ecosystems, by uncertainty about the efficacy and implementation of adaptation options). Confidence in fisheries changes is high since confidence in both 1) ocean warming, and 2) fish sensitivity to temperature, is high.</p>

3

4

CONFIDENCE LEVEL			
Very High	High	Medium	Low
Strong evidence (established theory, multiple sources, consistent results, well documented and accepted methods, etc.), high consensus	Moderate evidence (several sources, some consistency, methods vary and/or documentation limited, etc.), medium consensus	Suggestive evidence (a few sources, limited consistency, models incomplete, methods emerging, etc.), competing schools of thought	Inconclusive evidence (limited sources, extrapolations, inconsistent findings, poor documentation and/or methods not tested, etc.), disagreement or lack of opinions among experts

1

2

DRAFT

1 **Chapter 16: Northeast Region**

2 **Key Message Process:** See key message #1.

Key message #4/4	While a majority of states and a rapidly growing number of municipalities have begun to incorporate the risk of climate change into their planning activities, implementation of adaptation measures is still at early stages.
Description of evidence base	<p>The key message relies heavily on extensive evidence documented in the Northeast Technical Input Report (TIR).² Technical Input reports (48) on a wide range of topics were also received and reviewed as part of the Federal Register Notice solicitation for public input. Many of the key references cited in the TIR reflected experiences and processes developed in iterative stakeholder engagement concerning risk management^{92,101} that have been heavily cited and employed in new venues – local communities like Keane (NH) and New York City, for example.</p> <p>Various regional assessments were also consulted to capture key issues, concerns and opportunities in the region (e.g., for Delaware, Maine, Maryland, and Long Island, NY). In addition, there have been agency and government white paper reports describing proposed adaptation strategies based on climate impact assessments.^{10,88} We discovered that 10 of the 12 states in the Northeast have statewide adaptation plans in place or under development (many plans can be found at: http://georgetownclimate.org/node/3324).</p>
New information and remaining uncertainties	<p>That most Northeast states have begun to plan for adaptation is a matter of record. That few adaptation plans have been implemented is confirmed in Technical Inputs submitted to the National Climate Assessment process as well as prior assessments (http://nca2009.globalchange.gov/northeast), which informed the prior NCA.⁹</p> <p>Key uncertainties looking forward include: 1) the extent to which proposed adaptation strategies will be implemented given a range of factors including competing demands and limited funding; 2) the role of the private sector and individual action in adaptation, roles which can be difficult to document; 3) the extent of the federal role in adaptation planning and implementation; and 4) how changes in technology and the world economy may change the feasibility of specific adaptation strategies.¹⁰</p>
Assessment of confidence based on evidence	This Key Message is simply a statement of observed fact, so confidence language is not applicable.

3

CONFIDENCE LEVEL			
Very High	High	Medium	Low
Strong evidence (established theory, multiple sources, consistent results, well documented and accepted methods, etc.), high consensus	Moderate evidence (several sources, some consistency, methods vary and/or documentation limited, etc.), medium consensus	Suggestive evidence (a few sources, limited consistency, models incomplete, methods emerging, etc.), competing schools of thought	Inconclusive evidence (limited sources, extrapolations, inconsistent findings, poor documentation and/or methods not tested, etc.), disagreement or lack of opinions among experts

4

5

6

References

- 1 1. USDA, 2007: 2007 Census of agriculture. United States Summary and State Data. Volume 1. Geographic Area
2 Series Part 51, 639 pp., U.S. Department of Agriculture, Washington, D.C. [Available online at
3 http://www.agcensus.usda.gov/Publications/2007/Full_Report/usv1.pdf
4
- 5 2. Horton, R., W. Solecki, and C. Rosenzweig, 2012: Climate Change in the Northeast: A Sourcebook. Draft
6 Technical Input Report prepared for the U.S. National Climate Assessment
- 7 3. Kunkel, K. E., L. E. Stevens, S. E. Stevens, L. Sun, E. Janssen, D. Wuebbles, J. Rennells, A. DeGaetano, and J. G.
8 Dobson, 2013: Regional Climate Trends and Scenarios for the U.S. National Climate Assessment: Part 1.
9 Climate of the Northeast U.S. NOAA Technical Report NESDIS 142-1, 87 pp, National Oceanic and
10 Atmospheric Administration, National Environmental Satellite, Data, and Information Service, Washington,
11 D.C. [Available online at [http://www.nesdis.noaa.gov/technical_reports/NOAA_NESDIS_Tech_Report_142-1-
12 Climate_of_the_Northeast_U.S.pdf](http://www.nesdis.noaa.gov/technical_reports/NOAA_NESDIS_Tech_Report_142-1-Climate_of_the_Northeast_U.S.pdf)]
- 13 4. Church, J. A., P. L. Woodworth, T. Aarup, and W. S. Wilson, 2010: *Understanding Sea-Level Rise And
14 Variability*. Blackwell Publishing, Ltd
- 15 5. Sallenger, A. H., K. S. Doran, and P. A. Howd, 2012: Hotspot of accelerated sea-level rise on the Atlantic coast
16 of North America. *Nature Climate Change*, **2**, 884-888, doi:10.1038/nclimate1597. [Available online at
17 [http://www.cityofboston.gov/Images/Documents/Hotspot%20of%20accelerated%20sea-level%20rise%20-
18 %20USGS%206-25-12_tcm3-33215.pdf](http://www.cityofboston.gov/Images/Documents/Hotspot%20of%20accelerated%20sea-level%20rise%20-%20USGS%206-25-12_tcm3-33215.pdf)]
- 19 6. Groisman, P. Y., R. W. Knight, and O. G. Zolina, 2013: Recent Trends in Regional and Global Intense
20 Precipitation Patterns. *Climate Vulnerability*, R. A. Pielke, Sr., Ed., Academic Press, 25-55
- 21 7. Francis, J. A., and S. J. Vavrus, 2012: Evidence linking Arctic amplification to extreme weather in mid-latitudes.
22 *Geophysical Research Letters*, **39**, L06801, doi:10.1029/2012GL051000 [Available online at
23 <http://onlinelibrary.wiley.com/doi/10.1029/2012GL051000/pdf>]
- 24 8. Liu, J., J. A. Curry, H. Wang, M. Song, and R. M. Horton, 2012: Impact of declining Arctic sea ice on winter
25 snowfall. *Proceedings of the National Academy of Sciences of the United States of America*, **109**, 4074-4079,
26 doi:10.1073/pnas.1114910109. [Available online at
27 <http://www.pnas.org/content/109/11/4074.full.pdf+html>]
- 28 9. Karl, T. R., J. T. Melillo, and T. C. Peterson, Eds., 2009: *Global Climate Change Impacts in the United States*.
29 Cambridge University Press, 189 pp. [Available online at
30 <http://www.globalchange.gov/publications/reports/scientific-assessments/us-impacts>]
- 31 10. NPCC, 2010: *Climate Change Adaptation in New York City: Building a Risk Management Response: New York
32 City Panel on Climate Change 2009 Report*. Vol. 1196, C. Rosenzweig, and W. Solecki, Eds. Blackwell
33 Publishing Inc, 328 pp
- 34 11. Parris, A., P. Bromirski, V. Burkett, D. Cayan, M. Culver, J. Hall, R. Horton, K. Knuuti, R. Moss, J. Obeysekera, A.
35 Sallenger, and J. Weiss, 2012: Global Sea Level Rise Scenarios for the United States National Climate
36 Assessment. NOAA Tech Memo OAR CPO-1, 37 pp., National Oceanic and Atmospheric Administration, Silver
37 Spring, MD. [Available online at http://scenarios.globalchange.gov/sites/default/files/NOAA_SLR_r3_0.pdf]
- 38 12. Yin, J., M. E. Schlesinger, and R. J. Stouffer, 2009: Model projections of rapid sea-level rise on the northeast
39 coast of the United States. *Nature Geoscience*, **2**, 262-266, doi:10.1038/ngeo462 [Available online at
40 <http://dx.doi.org/10.1038/ngeo462>]
- 41 13. Horton, R. M., V. Gornitz, D. A. Bader, A. C. Ruane, R. Goldberg, and C. Rosenzweig, 2011: Climate hazard
42 assessment for stakeholder adaptation planning in New York City. *Journal of Applied Meteorology and
43 Climatology*, **50**, 2247-2266, doi:10.1175/2011JAMC2521.1. [Available online at
44 <http://dx.doi.org/10.1175/2011JAMC2521.1>];

- 1 Tebaldi, C., B. H. Strauss, and C. E. Zervas, 2012: Modelling sea level rise impacts on storm surges along US
2 coasts. *Environmental Research Letters*, **7**, 014032, doi:10.1088/1748-9326/7/1/014032
- 3 14. Gazoorian, C., 2012: How extreme was Irene? A comparison of the 2011, 1996, 1987 floods along the
4 Schoharie Creek. *Proceedings of the 2012 Mohawk Watershed Symposium, Union College, Schenectady, NY,*
5 *March 16, 2012*, J. M. H. Cockburn, and J. I. Garver, Eds., 17-22. [Available online at
6 http://minerva.union.edu/garverj/mws/MWS_2012_Abstract_Volume.pdf]
- 7 15. Avila, L. A., and J. Cangliaosi, 2011: Tropical Cyclone Report (AL092011): Hurricane Irene, 45 pp., National
8 Hurricane Center. [Available online at http://www.nhc.noaa.gov/data/tcr/AL092011_Irene.pdf]
- 9 16. Pealer, S., 2012: Lessons from Irene: Building resiliency as we rebuild, 8 pp., Vermont Agency of Natural
10 Resources. [Available online at http://www.anr.state.vt.us/anr/climatechange/Pubs/Irene_Facts.pdf]
- 11 17. Blake, E. S., T. B. Kimberlain, R. J. Berg, J. P. Cangialosi, and J. L. Beven, II 2013: Tropical Cyclone Report:
12 Hurricane Sandy. (AL182012) 22 – 29 October 2012, 157 pp., National Oceanic and Atmospheric
13 Administration, National Hurricane Center [Available online at
14 http://www.nhc.noaa.gov/data/tcr/AL182012_Sandy.pdf]
- 15 18. NOAA, cited 2013: Billion Dollar Weather/Climate Disasters, List of Events. National Oceanic and Atmospheric
16 Administration [Available online at <http://www.ncdc.noaa.gov/billions/events>]
- 17 19. Rosenzweig, C., and W. D. Solecki, 2001: *Climate Change and a Global City: The Potential Consequences of*
18 *Climate Variability and Change – Metro East Coast*. Columbia Earth Institute
- 19 20. MTA, 2007: August 8, 2007 Storm Report, 115 pp., Metropolitan Transportation Authority, New York, New
20 York. [Available online at http://www.mta.info/mta/pdf/storm_report_2007.pdf];
- 21 NYCDEP, 2008: The NYCDEP Climate Change Program, 102 pp., New York City Department of Environmental
22 Protection., New York, NY. [Available online at
23 http://www.nyc.gov/html/dep/pdf/climate/climate_complete.pdf]
- 24 21. City of New York, 2011: Inventory of New York City Greenhouse Gas Emissions. J. T. Dickinson, A., Ed., 36 pp.,
25 Mayor's Office of Long-term Planning and Sustainability, New York, New York. [Available online at
26 http://nytelecom.vo.llnwd.net/o15/agencies/planyc2030/pdf/full_report_2007.pdf]
- 27 22. Rosenzweig, C., W. D. Solecki, R. Blake, M. Bowman, C. Faris, V. Gornitz, R. Horton, K. Jacob, A. LeBlanc, R.
28 Leichenko, M. Linkin, D. Major, M. O'Grady, L. Patrick, E. Sussman, G. Yohe, and R. Zimmerman, 2011:
29 Developing coastal adaptation to climate change in the New York City infrastructure-shed: process, approach,
30 tools, and strategies. *Climatic Change*, **106**, 93-127. [Available online at
31 http://www.ccrun.org/sites/ccrun/files/attached_files/2011_Rosenzweig_etal.pdf]
- 32 23. City of New York, 2013: PlaNYC - A Stronger, More Resilient New York, 445 pp., New York City Special
33 Initiative for Rebuilding and Resiliency, New York, New York. [Available online at
34 <http://www.nyc.gov/html/sirr/html/report/report.shtml>]
- 35 24. USGS: Coastal Change Hazards: Hurricanes and Extreme Storms. U.S. Geological Survey, St. Petersburg
36 Coastal and Marine Science Center. [Available online at [http://coastal.er.usgs.gov/hurricanes/sandy/coastal-](http://coastal.er.usgs.gov/hurricanes/sandy/coastal-change/)
37 [change/](http://coastal.er.usgs.gov/hurricanes/sandy/coastal-change/)]
- 38 25. Gaffin, S. R., C. Rosenzweig, R. Khanbilvardi, L. Parshall, S. Mahani, H. Glickman, R. Goldberg, R. Blake, R. B.
39 Slosberg, and D. Hillel, 2008: Variations in New York City's urban heat island strength over time and space.
40 *Theoretical and Applied Climatology*, **94**, 1-11, doi:10.1007/s00704-007-0368-3
- 41 26. Semenza, J. C., C. H. Rubin, K. H. Falter, J. D. Selanikio, W. D. Flanders, H. L. Howe, and J. L. Wilhelm, 1996:
42 Heat-related deaths during the July 1995 heat wave in Chicago. *New England Journal of Medicine*, **335**, 84-90,
43 doi:10.1056/NEJM199607113350203. [Available online at
44 <http://www.nejm.org/doi/pdf/10.1056/NEJM199607113350203>]

- 1 27. Patz, J. A., 2000: Climate Change and Health: New Research Challenges. *Ecosystem Health*, **6**, 52-58,
2 doi:10.1046/j.1526-0992.2000.00006.x
- 3 28. Solecki, W., L. Tryhorn, A. DeGaetano, and D. Major, 2011: Ch. 2: Vulnerability and Adaptation. *Responding to*
4 *Climate Change in New York State: The ClimAID Integrated Assessment for Effective Climate Change*
5 *Adaptation in New York State*, C. Rosenzweig, W. Solecki, A. DeGaetano, M. O'Grady, S. Hassol, and P.
6 Grabhorn, Eds., Blackwell Publishing, 50-62. [Available online at [http://www.nyserda.ny.gov/-](http://www.nyserda.ny.gov/-/media/Files/Publications/Research/Environmental/EMEP/climaid/11-18-response-to-climate-change-in-nys-chapter2.ashx)
7 [/media/Files/Publications/Research/Environmental/EMEP/climaid/11-18-response-to-climate-change-in-nys-](http://www.nyserda.ny.gov/-/media/Files/Publications/Research/Environmental/EMEP/climaid/11-18-response-to-climate-change-in-nys-chapter2.ashx)
8 [chapter2.ashx](http://www.nyserda.ny.gov/-/media/Files/Publications/Research/Environmental/EMEP/climaid/11-18-response-to-climate-change-in-nys-chapter2.ashx)]
- 9 29. Amato, A. D., M. Ruth, P. Kirshen, and J. Horwitz, 2005: Regional energy demand responses to climate
10 change: Methodology and application to the Commonwealth of Massachusetts. *Climatic Change*, **71**, 175-
11 201, doi:10.1007/s10584-005-5931-2;
- 12 Ruth, M., and A. C. Lin, 2006: Regional energy demand and adaptations to climate change: Methodology and
13 application to the state of Maryland, USA. *Energy Policy*, **34**, 2820-2833, doi:10.1016/j.enpol.2005.04.016
- 14 30. Cutter, S. L., B. J. Boruff, and W. L. Shirley, 2003: Social vulnerability to environmental hazards. *Social Science*
15 *Quarterly*, **84**, 242-261, doi:10.1111/1540-6237.8402002
- 16 31. Anderson, G. B., and M. L. Bell, 2012: Lights out: Impact of the August 2003 power outage on mortality in
17 New York, NY. *Epidemiology*, **23**, 189-193, doi:10.1097/EDE.0b013e318245c61c;
- 18 EPA, 2006: Excessive Heat Events Guidebook. EPA 430-B-06-005, 60 pp., U.S. Environmental Protection
19 Agency, Washington, D.C. [Available online at http://www.epa.gov/heatisd/about/pdf/EHEguide_final.pdf];
- 20 Huang, C., A. G. Barnett, X. Wang, P. Vaneckova, G. FitzGerald, and S. Tong, 2011: Projecting future heat-
21 related mortality under climate change scenarios: A systematic review. *Environmental Health Perspectives*,
22 **119**, 1681-1690, doi:10.1289/Ehp.1103456. [Available online at [http://ehp.niehs.nih.gov/wp-](http://ehp.niehs.nih.gov/wp-content/uploads/119/12/ehp.1103456.pdf)
23 [content/uploads/119/12/ehp.1103456.pdf](http://ehp.niehs.nih.gov/wp-content/uploads/119/12/ehp.1103456.pdf)];
- 24 Knowlton, K., B. Lynn, R. A. Goldberg, C. Rosenzweig, C. Hogrefe, J. K. Rosenthal, and P. L. Kinney, 2007:
25 Projecting heat-related mortality impacts under a changing climate in the New York City region. *American*
26 *Journal of Public Health*, **97**, 2028-2034, doi:10.2105/Ajph.2006.102947. [Available online at
27 <http://ajph.aphapublications.org/doi/pdf/10.2105/AJPH.2006.102947>]
- 28 32. Li, T., R. M. Horton, and P. L. Kinney, 2013: Projections of seasonal patterns in temperature-related deaths for
29 Manhattan, New York. *Nature Climate Change*, **3**, 717-721, doi:10.1038/nclimate1902
- 30 33. Sheffield, P. E., J. L. Carr, P. L. Kinney, and K. Knowlton, 2011: Modeling of regional climate change effects on
31 ground-level ozone and childhood asthma. *American Journal of Preventive Medicine*, **41**, 251-257,
32 doi:10.1016/j.amepre.2011.04.017. [Available online at
33 <http://download.journals.elsevierhealth.com/pdfs/journals/0749-3797/PIIS0749379711003461.pdf>]
- 34 34. Hammer, S. A., L. Parshall, R. Leichenko, P. Vancura, and M. Panero, 2011: Ch. 8: Energy. *Responding to*
35 *Climate Change in New York State: The ClimAID Integrated Assessment for Effective Climate Change*
36 *Adaptation in New York State*, C. Rosenzweig, W. Solecki, A. DeGaetano, M. O'Grady, S. Hassol, and P.
37 Grabhorn, Eds., New York State Energy Research and Development Authority (NYSERDA), 225-298. [Available
38 online at www.nyserda.ny.gov/climaid]
- 39 35. Ziska, L., K. Knowlton, C. Rogers, D. Dalan, N. Tierney, M. A. Elder, W. Filley, J. Shropshire, L. B. Ford, C.
40 Hedberg, P. Fleetwood, K. T. Hovanky, T. Kavanaugh, G. Fulford, R. F. Vrtis, J. A. Patz, J. Portnoy, F. Coates, L.
41 Bielory, and D. Frenz, 2011: Recent warming by latitude associated with increased length of ragweed pollen
42 season in central North America. *Proceedings of the National Academy of Sciences of the United States of*
43 *America*, **108**, 4248-4251, doi:10.1073/pnas.1014107108 [Available online at
44 <http://www.pnas.org/content/108/10/4248.full.pdf+html>]

- 1 36. Bacon, R. M., K. J. Kugeler, and P. S. Mead, 2008: Surveillance for Lyme disease--United States, 1992-2006.
2 *Morbidity and Mortality Weekly Report*, **57**, 1-9. [Available online at
3 <http://www.cdc.gov/MMWR/PREVIEW/MMWRHTML/ss5710a1.htm>]
- 4 37. Brownstein, J. S., T. R. Holford, and D. Fish, 2005: Effect of climate change on Lyme disease risk in North
5 America. *EcoHealth*, **2**, 38-46, doi:10.1007/s10393-004-0139-x
- 6 38. McCabe, G. J., and J. E. Bunnell, 2004: Precipitation and the occurrence of Lyme disease in the northeastern
7 United States. *Vector-Borne and Zoonotic Diseases*, **4**, 143-148, doi:10.1089/1530366041210765;
- 8 Subak, S., 2003: Effects of Climate on Variability in Lyme Disease Incidence in the Northeastern United States.
9 *American journal of epidemiology*, **157**, 531-538, doi:10.1093/aje/kwg014. [Available online at
10 <http://aje.oxfordjournals.org/content/157/6/531.full.pdf+html>]
- 11 39. Rochlin, I., D. V. Ninivaggi, M. L. Hutchinson, and A. Farajollahi, 2013: Climate Change and Range Expansion of
12 the Asian Tiger Mosquito (*Aedes albopictus*) in Northeastern USA: Implications for Public Health Practitioners.
13 *PLoS ONE*, **8**, e60874, doi:10.1371/journal.pone.0060874. [Available online at
14 <http://dx.doi.org/10.1371%2Fjournal.pone.0060874>]
- 15 40. Kuntz, J., and R. Murray, 2009: Predictability of swimming prohibitions by observational parameters: a
16 proactive public health policy, Stamford, Connecticut, 1989-2004. *Journal of Environmental Health*, **72**, 17-22
- 17 41. Redman, R. L., C. A. Nenn, D. Eastwood, and M. H. Gorelick, 2007: Pediatric Emergency Department Visits for
18 Diarrheal Illness Increased After Release of Undertreated Sewage. *Pediatrics*, **120**, e1472-e1475,
19 doi:10.1542/peds.2007-0283. [Available online at
20 <http://www.pediatricsdigest.mobi/content/120/6/e1472.full.pdf+html>]
- 21 42. U.S. Census Bureau, cited 2012: United States Census 2010. U.S. Census Bureau,. [Available online at
22 <http://www.census.gov/2010census/>]
- 23 43. Crowell, M., K. Coulton, C. Johnson, J. Westcott, D. Bellomo, S. Edelman, and E. Hirsch, 2010: An estimate of
24 the U.S. population living in 100-Year coastal flood hazard areas. *Journal of Coastal Research*, **262**, 201-211,
25 doi:10.2112/JCOASTRES-D-09-00076.1
- 26 44. CCSP, 2009: Coastal Sensitivity to Sea-Level Rise: A Focus on the Mid-Atlantic Region. A report by the U.S.
27 Climate Change Science Program and the Subcommittee on Global Change Research. J. G. Titus, (Coordinating
28 Lead Author), K. E. Anderson, D. R. Cahoon, D. B. Gesch, S. K. Gill, B. T. Gutierrez, E. R. Thieler, and S. J.
29 Williams, (Lead Authors), Eds.978-0160830860, 320 pp., U.S. Environmental Protection Agency, Washington,
30 D.C. [Available online at <http://downloads.globalchange.gov/sap/sap4-1/sap4-1-final-report-all.pdf>]
- 31 45. ASCE, cited 2013: Report Card for America's Infrastructure. American Society of Civil Engineers. [Available
32 online at <http://www.infrastructurereportcard.org/>]
- 33 46. DOT, 2008: The Potential Impacts of Global Sea Level Rise on Transportation Infrastructure – Part 1:
34 Methodology. Center for Climate Change and Environmental Forecasting, U.S. Department of Transportation,
35 Washington, D.C. [Available online at <http://climate.dot.gov/impacts-adaptations/pdf/entire.pdf>]
- 36 47. Maryland Port Administration, 2008: The Economic Impacts of the Port of Baltimore, 39 pp., Martin
37 Associates, Lancaster, PA. [Available online at
38 http://mpa.maryland.gov/_media/client/planning/EconomicImpactReport-revisedJan'08.pdf]
- 39 48. Wu, S.-Y., R. Najjar, and J. Siewert, 2009: Potential impacts of sea-level rise on the Mid- and Upper-Atlantic
40 Region of the United States. *Climatic Change*, **95**, 121-138, doi:10.1007/s10584-008-9522-x
- 41 49. Kirshen, P., C. Watson, E. Douglas, A. Gontz, J. Lee, and Y. Tian, 2008: Coastal flooding in the Northeastern
42 United States due to climate change. *Mitigation and Adaptation Strategies for Global Change*, **13**, 437-451,
43 doi:10.1007/s11027-007-9130-5

- 1 50. Horton, R., C. Rosenzweig, V. Gornitz, D. Bader, and M. O'Grady, 2010: Climate risk information. *Annals of the*
2 *New York Academy of Sciences*, **1196**, 147-228, doi:10.1111/j.1749-6632.2010.05323.x. [Available online at
3 <http://onlinelibrary.wiley.com/doi/10.1111/j.1749-6632.2009.05320.x/abstract>]
- 4 51. Zimmerman, R., and C. Faris, 2010: Infrastructure impacts and adaptation challenges. *Annals of the New York*
5 *Academy of Sciences*, **1196**, 63-86, doi:10.1111/j.1749-6632.2009.05318.x
- 6 52. Freidline, A., 2011: Rain cuts early volume, delays summer harvest. *The Packer*.
- 7 53. Hatfield, J. L., K. J. Boote, B. A. Kimball, L. H. Ziska, R. C. Izaurralde, D. Ort, A. M. Thomson, and D. Wolfe, 2011:
8 Climate impacts on agriculture: Implications for crop production. *Agronomy Journal*, **103**, 351-370, doi:DOI
9 10.2134/agronj2010.0303
- 10 54. Hayhoe, K., C. P. Wake, T. G. Huntington, L. Luo, M. D. Schwartz, J. Sheffield, E. Wood, B. Anderson, J.
11 Bradbury, A. DeGaetano, T. Troy, and D. Wolfe, 2007: Past and future changes in climate and hydrological
12 indicators in the US Northeast. *Climate Dynamics*, **28**, 381-407, doi:10.1007/s00382-006-0187-8
- 13 55. Wolfe, D. W., J. Comstock, A. Lakso, L. Chase, W. Fry, C. Petzoldt, R. Leichenko, and P. Vancura., 2011: Ch. 7:
14 Agriculture. *Responding to Climate Change in New York State: The ClimAID Integrated Assessment for*
15 *Effective Climate Change Adaptation in New York State*, C. Rosenzweig, W. Solecki, A. DeGaetano, M.
16 O'Grady, S. Hassol, and P. Grabhorn, Eds., Blackwell Publishing, 217-254. [Available online at
17 [http://www.nyserda.ny.gov/~media/Files/Publications/Research/Environmental/EMEP/climaid/11-18-
18 response-to-climate-change-in-nys-chapter6.ashx](http://www.nyserda.ny.gov/~media/Files/Publications/Research/Environmental/EMEP/climaid/11-18-
18 response-to-climate-change-in-nys-chapter6.ashx)]
- 19 56. Wolfe, D. W., L. Ziska, C. Petzoldt, A. Seaman, L. Chase, and K. Hayhoe, 2008: Projected change in climate
20 thresholds in the Northeastern U.S.: implications for crops, pests, livestock, and farmers. *Mitigation and*
21 *Adaptation Strategies for Global Change*, **13**, 555-575, doi:10.1007/s11027-007-9125-2
- 22 57. Levin, M. D., 2005: Finger Lakes freezes devastate vineyards. *Wines and Vines*.
- 23 58. Gu, L., P. J. Hanson, W. Mac Post, D. P. Kaiser, B. Yang, R. Nemani, S. G. Pallardy, and T. Meyers, 2008: The
24 2007 eastern US spring freezes: increased cold damage in a warming world? *BioScience*, **58**, 253-262,
25 doi:10.1641/b580311. [Available online at <http://www.jstor.org/stable/10.1641/B580311>]
- 26 59. Halloran, A., 2012: Growing Uncertainties: Climate change is forcing farmers in the Northeast to rethink their
27 seasonal strategies. *Metroland News*, May 17, 2012. [Available online at
28 <http://metroland.net/2012/05/17/growing-uncertainties/>]
- 29 60. Ziska, L. H., and G. B. Runion, 2007: Future weed, pest, and disease problems for plants. *Agroecosystems in a*
30 *Changing Climate* P. C. D. Newton, R. A. Carran, G. R. Edwards, and P. A. Niklaus, Eds., CRC Press, 261-287
- 31 61. Ziska, L. H., and K. George, 2004: Rising carbon dioxide and invasive, noxious plants: potential threats and
32 consequences. *World Resource Review*, **16**, 427-447. [Available online at
33 [http://omar.arsnet.usda.gov/SP2UserFiles/ad_hoc/12755100FullTextPublicationspdf/Publications/ziska/pote
34 ntialthreats.pdf](http://omar.arsnet.usda.gov/SP2UserFiles/ad_hoc/12755100FullTextPublicationspdf/Publications/ziska/pote
34 ntialthreats.pdf)]
- 35 62. Ziska, L. H., J. R. Teasdale, and J. A. Bunce, 1999: Future atmospheric carbon dioxide may increase tolerance
36 to glyphosate. *Weed Science*, **47**, 608-615
- 37 63. Beckage, B., B. Osborne, D. G. Gavin, C. Pucko, T. Siccama, and T. Perkins, 2008: A rapid upward shift of a
38 forest ecotone during 40 years of warming in the Green Mountains of Vermont. *Proceedings of the National*
39 *Academy of Sciences of the United States of America*, **105**, 4197-4202, doi:10.1073/pnas.0708921105
- 40 64. Abu-Asab, M. S. P., P.M.; Shetler, S.G.; Orli, S.S., 2001: Earlier plant flowering in spring as a response to global
41 warming in the Washington, DC, area. *Biodiversity and Conservation*, **10**, 597-612,
42 doi:10.1023/A:1016667125469
- 43 65. Primack, D., C. Imbres, R. B. Primack, A. J. Miller-Rushing, and P. Del Tredici, 2004: Herbarium specimens
44 demonstrate earlier flowering times in response to warming in Boston. *American Journal of Botany*, **91**, 1260-

- 1 1264, doi:10.3732/ajb.91.8.1260. [Available online at
2 <http://www.amjbot.org/content/91/8/1260.full.pdf+html>];
- 3 Wolfe, D. W., M. D. Schwartz, A. N. Lakso, Y. Otsuki, R. M. Pool, and N. J. Shaulis, 2005: Climate change and
4 shifts in spring phenology of three horticultural woody perennials in northeastern USA. *International Journal*
5 *of Biometeorology*, **49**, 303-309, doi:10.1007/s00484-004-0248-9
- 6 66. Butler, C. J., 2003: The disproportionate effect of global warming on the arrival dates of short - distance
7 migratory birds in North America. *Ibis*, **145**, 484-495, doi:10.1046/j.1474-919X.2003.00193.x
- 8 67. Rodenhouse, N. L., L. M. Christenson, D. Parry, and L. E. Green, 2009: Climate change effects on native fauna
9 of northeastern forests *Canadian Journal of Forest Research*, **39**, 249-263, doi:10.1139/X08-160. [Available
10 online at <http://www.nrcresearchpress.com/doi/pdf/10.1139/X08-160>]
- 11 68. Paradis, A., J. Elkinton, K. Hayhoe, and J. Buonaccorsi, 2008: Role of winter temperature and climate change
12 on the survival and future range expansion of the hemlock woolly adelgid (*Adelges tsugae*) in eastern North
13 America. *Mitigation and Adaptation Strategies for Global Change*, **13**, 541-554, doi:10.1007/s11027-007-
14 9127-0. [Available online at http://www.northeastclimateimpacts.org/pdf/miti/paradis_et_al.pdf]
- 15 69. Wolfe, D. W., J. Comstock, H. Menninger, D. Weinstein, K. Sullivan, C. Kraft, B. Chabot, P. Curtis, R. Leichenko,
16 and P. Vancura, 2011: Ch. 6: Ecosystems. *Responding to Climate Change in New York State: The ClimAID*
17 *Integrated Assessment for Effective Climate Change Adaptation in New York State*, C. Rosenzweig, W. Solecki,
18 A. DeGaetano, M. O'Grady, S. Hassol, and P. Grabhorn, Eds., Blackwell Publishing, 164-216. [Available online
19 at [http://www.nyserdera.ny.gov/~media/Files/Publications/Research/Environmental/EMEP/climaid/11-18-](http://www.nyserdera.ny.gov/~media/Files/Publications/Research/Environmental/EMEP/climaid/11-18-response-to-climate-change-in-nys-chapter6.ashx)
20 [response-to-climate-change-in-nys-chapter6.ashx](http://www.nyserdera.ny.gov/~media/Files/Publications/Research/Environmental/EMEP/climaid/11-18-response-to-climate-change-in-nys-chapter6.ashx)]
- 21 70. Stromayer, K. A. K., and R. J. Warren, 1997: Are overabundant deer herds in the eastern United States
22 creating alternative stable states in forest plant communities? *Wildlife Society Bulletin*, **25**, 227-234.
23 [Available online at <http://www.jstor.org/stable/3783436>]
- 24 71. Fogarty, M., L. Incze, K. Hayhoe, D. Mountain, and J. Manning, 2008: Potential climate change impacts on
25 Atlantic cod (*Gadus morhua*) off the northeastern USA. *Mitigation and Adaptation Strategies for Global*
26 *Change*, **13**, 453-466, doi:10.1007/s11027-007-9131-4;
- 27 Frumhoff, P. C., J. J. McCarthy, J. M. Melillo, S. C. Moser, and D. J. Wuebbles, 2007: Ch. 3: Marine Impacts.
28 *Confronting Climate Change in the U.S. Northeast: Science, Impacts, and Solutions. Synthesis report of the*
29 *Northeast Climate Impacts Assessment (NECIA)*, Union of Concerned Scientists 39-46. [Available online at
30 [http://www.climatechoices.org/assets/documents/climatechoices/confronting-climate-change-in-the-u-s-](http://www.climatechoices.org/assets/documents/climatechoices/confronting-climate-change-in-the-u-s-northeast.pdf)
31 [northeast.pdf](http://www.climatechoices.org/assets/documents/climatechoices/confronting-climate-change-in-the-u-s-northeast.pdf)]
- 32 72. Jenkins, J., 2010: *Climate Change in the Adirondacks: The Path to Sustainability*. Cornell University Press, 200
33 pp
- 34 73. Iverson, L., A. Prasad, and S. Matthews, 2008: Modeling potential climate change impacts on the trees of the
35 northeastern United States. *Mitigation and Adaptation Strategies for Global Change*, **13**, 487-516,
36 doi:10.1007/s11027-007-9129-y
- 37 74. Mohan, J. E., R. M. Cox, and L. R. Iverson, 2009: Composition and carbon dynamics of forests in northeastern
38 North America in a future, warmer world. *Canadian Journal of Forest Research*, **39**, 213-230,
39 doi:10.1139/X08-185
- 40 75. Lynn, K., J. Daigle, J. Hoffman, F. Lake, N. Michelle, D. Ranco, C. Viles, G. Voggesser, and P. Williams, 2013: The
41 impacts of climate change on tribal traditional foods. *Climatic Change*, **120**, 545-556, doi:10.1007/s10584-
42 013-0736-1
- 43 76. Dukes, J. S., J. Pontius, D. Orwig, J. R. Garnas, V. L. Rodgers, N. Brazee, B. Cooke, K. A. Theoharides, E. E.
44 Stange, R. Harrington, J. Ehrenfeld, J. Gurevitch, M. Lerda, K. Stinson, R. Wick, and M. Ayres, 2009:
45 Responses of insect pests, pathogens, and invasive plant species to climate change in the forests of

- 1 northeastern North America: What can we predict? *Canadian Journal of Forest Research*, **39**, 231-248,
2 doi:10.1139/X08-171 [Available online at <http://www.nrcresearchpress.com/doi/pdf/10.1139/X08-171>]
- 3 77. Buonaiuto, F., L. Patrick, V. Gornitz, E. Hartig, R. Leichenko, J. Stedinger, J. Tanski, P. Vancura, and J. Waldman,
4 2011: Ch. 15: Coastal Zones. *Responding to Climate Change in New York State: The ClimAID Integrated*
5 *Assessment for Effective Climate Change Adaptation in New York State*, C. Rosenzweig, W. Solecki, A.
6 DeGaetano, M. O'Grady, S. Hassol, and P. Grabhorn, Eds., Blackwell Publishing, 649
- 7 78. Gornitz, V., S. Couch, and E. K. Hartig, 2001: Impacts of sea level rise in the New York City metropolitan area.
8 *Global and Planetary Change*, **32**, 61-88, doi:10.1016/S0921-8181(01)00150-3
- 9 79. Gedan, K. B., B. R. Silliman, and M. D. Bertness, 2009: Centuries of human-driven change in salt marsh
10 ecosystems. *Annual Review of Marine Science*, **1**, 117-141, doi:10.1146/annurev.marine.010908.163930
- 11 80. Boon, J. D., J. M. Brubaker, and D. R. Forrest, 2010: Chesapeake Bay land subsidence and sea level change: An
12 evaluation of past and present trends and future outlook. Special Report No. 425 in Applied Marine Science
13 and Ocean Engineering. Virginia Institute of Marine Science, Gloucester Point, Virginia. [Available online at
14 <http://web.vims.edu/GreyLit/VIMS/srams0e425.pdf>]
- 15 81. Najjar, R. G., C. R. Pyke, M. B. Adams, D. Breitburg, C. Hershner, M. Kemp, R. Howarth, M. R. Mulholland, M.
16 Paolisso, D. Secor, K. Sellner, D. Wardrop, and R. Wood, 2010: Potential climate-change impacts on the
17 Chesapeake Bay. *Estuarine, Coastal and Shelf Science*, **86**, 1-20, doi:10.1016/j.ecss.2009.09.026
- 18 82. Georgetown Climate Center, cited 2012: State and Local Adaptation Plans. [Available online at
19 <http://georgetownclimate.org/node/3324>]
- 20 83. Sussman, E., 2008: Reshaping municipal and county laws to foster green building, energy efficiency, and
21 renewable energy. *NYU Environmental Law Journal*, **16**, 1
- 22 84. RGGI, 2012: Annual Report on the Market for RGGI CO₂ Allowances: 2011, 40 pp, Potomac Economics.
23 [Available online at www.rggi.org/docs/MM_2011_Annual_Report.pdf]
- 24 85. State of Massachusetts, cited 2012: Massachusetts General Laws, Part I, Title III, Ch. 30, Section 61.
25 [Available online at <http://www.malegislature.gov/Laws/GeneralLaws/PartI/TitleIII/Chapter30/Section61>]
- 26 86. The Nature Conservancy, cited 2012: A Global Network for Coastal Resilience. Coastal Resilience. [Available
27 online at <http://www.coastalresilience.org>]
- 28 87. Beck, M. W., B. Gilmer, Z. Ferdaña, G. T. Raber, C. C. Shepard, I. Meliane, J. D. Stone, A. W. Whelchel, M.
29 Hoover, and S. Newkirk, 2013: Ch. 6: Increasing the resilience of human and natural communities to coastal
30 hazards: Supporting decisions in New York and Connecticut. *The Role of Ecosystems in Disaster Risk*
31 *Reduction*, F. G. Renaud, K. Sudmeier-Rieux, and M. Estrella, Eds., United Nations University press, 140-163
- 32 88. Ferdaña, Z., S. Newkirk, A. W. Whelchel, B. Gilmer, and M. W. Beck, 2010: Ch. 6: Adapting to climate change:
33 building interactive decision support to meet management objectives for coastal conservation and hazard
34 mitigation on Long Island, New York, USA. *Building resilience to climate change: ecosystem-based adaptation*
35 *and lessons from the field*, Á. Andrade Pérez, B. Herrera Fernández, and R. Cazzolla Gatti, Eds., IUCN,
36 International Union for Conservation of Nature, 73-87. [Available online at <http://data.iucn.org/dbtw->
37 [wpd/edocs/2010-050.pdf](http://data.iucn.org/dbtw-wpd/edocs/2010-050.pdf)]
- 38 89. Wilbanks, T., S. Fernandez, G. Backus, P. Garcia, K. Jonietz, P. Kirshen, M. Savonis, B. Solecki, and L. Toole,
39 2012: Climate Change and Infrastructure, Urban Systems, and Vulnerabilities. Technical Report to the U.S.
40 Department of Energy in Support of the National Climate Assessment, 119 pp., Oak Ridge National
41 Laboratory. U.S Department of Energy, Office of Science, Oak Ridge, TN. [Available online at
42 <http://www.esd.ornl.gov/eess/Infrastructure.pdf>]
- 43 90. Sussman, E., 2009: Case Study: Climate Change Adaptation Planning Guidance for Local Governments in the
44 United States. *Sustainable Development Law & Policy*, **9**, 11

- 1 91. Engert, M., 2010: What's in your tool box? Creative community outreach processes refurbish existing tools,
2 American Bar Association Section of Environment Energy and Resources. *Alternative Dispute Resolution*
3 *Committee Newsletter*, 9. [Available online at
4 http://apps.americanbar.org/enviro/committees/adr/newsletter/may10/ADR_May10.pdf]
- 5 92. New York State, 2011: *Responding to Climate Change in New York State: The ClimAID Integrated Assessment*
6 *for Effective Climate Change Adaptation in New York State*. Vol. 1244, Blackwell Publishing, 649 pp. [Available
7 online at <http://onlinelibrary.wiley.com/doi/10.1111/j.1749-6632.2011.06331.x/pdf>]
- 8 93. NRC, 2010: *Adapting to Impacts of Climate Change. America's Climate Choices: Report of the Panel on*
9 *Adapting to the Impacts of Climate Change*. National Research Council. The National Academies Press, 292
10 pp
- 11 94. Cole, W. D., 2008: Sea level rise: Technical guidance for Dorchester County Maryland Eastern Shore Resource
12 Conservation and Development Council, 55 pp., Maryland Eastern Shore Resource Conservation &
13 Development Council, Annapolis, MD. [Available online at
14 <http://www.dnr.state.md.us/dnrnews/pdfs/Dorchester.pdf>];
15 Maryland Department of Natural Resources, 2008: Ch. 5: Phase I: Sea level rise and coastal storms. Report of
16 the Maryland Commission on Climate Change Adaptation and Response Working Group. *Comprehensive*
17 *Strategy for Reducing Maryland's Vulnerability to Climate Change*, Maryland Department of Natural
18 Resources, Maryland Department of Planning, , 32. [Available online at
19 <http://www.mde.state.md.us/assets/document/Air/ClimateChange/Chapter5.pdf>]
- 20 95. Delaware Coastal Programs, 2011: Preparing for Sea Level Rise: Development of a Sea level Rise Initiative. Sea
21 Level Rise Initiative Project Compendium. [Available online at
22 <http://www.dnrec.delaware.gov/coastal/Documents/SeaLevelRise/SLRCompSept2011.pdf>]
- 23 96. Wolfe, D. W., J. Beem-Miller, L. Chambliss, and A. Chatrchyan, 2011: Climate Change Facts: Farm Energy,
24 Carbon, and Greenhouse Gases, 4 pp., Cornell Climate Change Program Work Team. [Available online at
25 http://files.campus.edublogs.org/blogs.cornell.edu/dist/8/90/files/2009/09/farm_energy-zhts0p.pdf]
- 26 97. Adger, W. N., S. Agrawala, M. M. Q. Mirza, C. Conde, K. O'Brien, J. Pulhin, R. Pulwarty, B. Smit, and K.
27 Takahashi, 2007: Ch. 17: Assessment of Adaptation Practices, Options, Constraints and Capacity. *Climate*
28 *Change 2007: Impacts, Adaptation and Vulnerability. Contribution of Working Group II to the Fourth*
29 *Assessment Report of the Intergovernmental Panel on Climate Change*, M. L. Parry, O. F. Canziani, J. P.
30 Palutikof, P. J. van der Linden, and C. E. Hanson, Eds., Cambridge University Press, 717-743;
- 31 Wolfe, D. W., 2012: Ch. 2: Climate change solutions from the agronomy perspective. *Handbook of Climate*
32 *Change and Agroecosystems: Global and Regional Aspects and Implications*, D. Hillel, and C. Rosenzweig, Eds.,
33 Imperial College Press, 11-30
- 34 98. DeGaetano, A. T., 2009: Time-dependent changes in extreme-precipitation return-period amounts in the
35 continental United States. *Journal of Applied Meteorology and Climatology*, **48**, 2086-2099,
36 doi:10.1175/2009jamc2179.1. [Available online at
37 <http://journals.ametsoc.org/doi/pdf/10.1175/2009JAMC2179.1>]
- 38 99. Jain, S., E. Stancioff, and A. Gray, cited 2012: Coastal Climate Adaptation in Maine's coastal communities:
39 Governance mapping for culvert management. [Available online at
40 [http://umaine.edu/maineclimatenews/archives/spring-2012/coastal-climate-adaptation-in-maines-coastal-](http://umaine.edu/maineclimatenews/archives/spring-2012/coastal-climate-adaptation-in-maines-coastal-communities/)
41 [communities/](http://umaine.edu/maineclimatenews/archives/spring-2012/coastal-climate-adaptation-in-maines-coastal-communities/)]
- 42 100. Lenton, T., A. Footitt, and A. Dlugolecki, 2009: Major Tipping Points in the Earth's Climate System and
43 Consequences for the Insurance Sector, 89 pp., World Wide Fund for Nature, Gland, Switzerland and Munich,
44 Germany. [Available online at https://www.allianz.com/media/press/documents/tipping_points.pdf]

- 1 101. Rosenzweig, C., W. Solecki, R. Blake, M. Bowman, A. Castaldi, C. Faris, V. Gornitz, K. Jacob, A. LeBlanc, R.
2 Leichenko, E. Sussman, G. Yohe, and R. Zimmerman, 2009: Climate Risk Information. *New York City Panel on*
3 *Climate Change*. [Available online at http://www.nyc.gov/html/om/pdf/2009/NPCC_CRI.pdf]

4

DRAFT