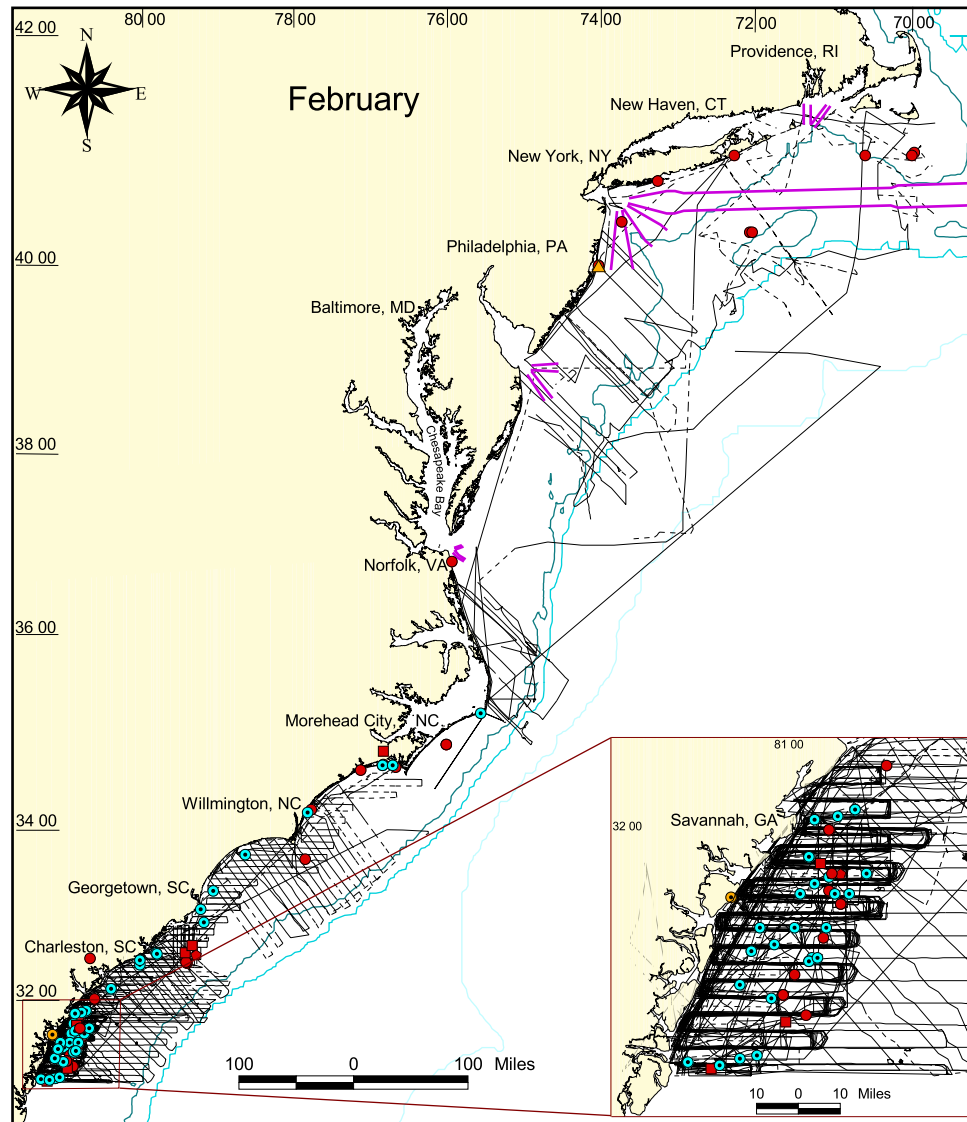
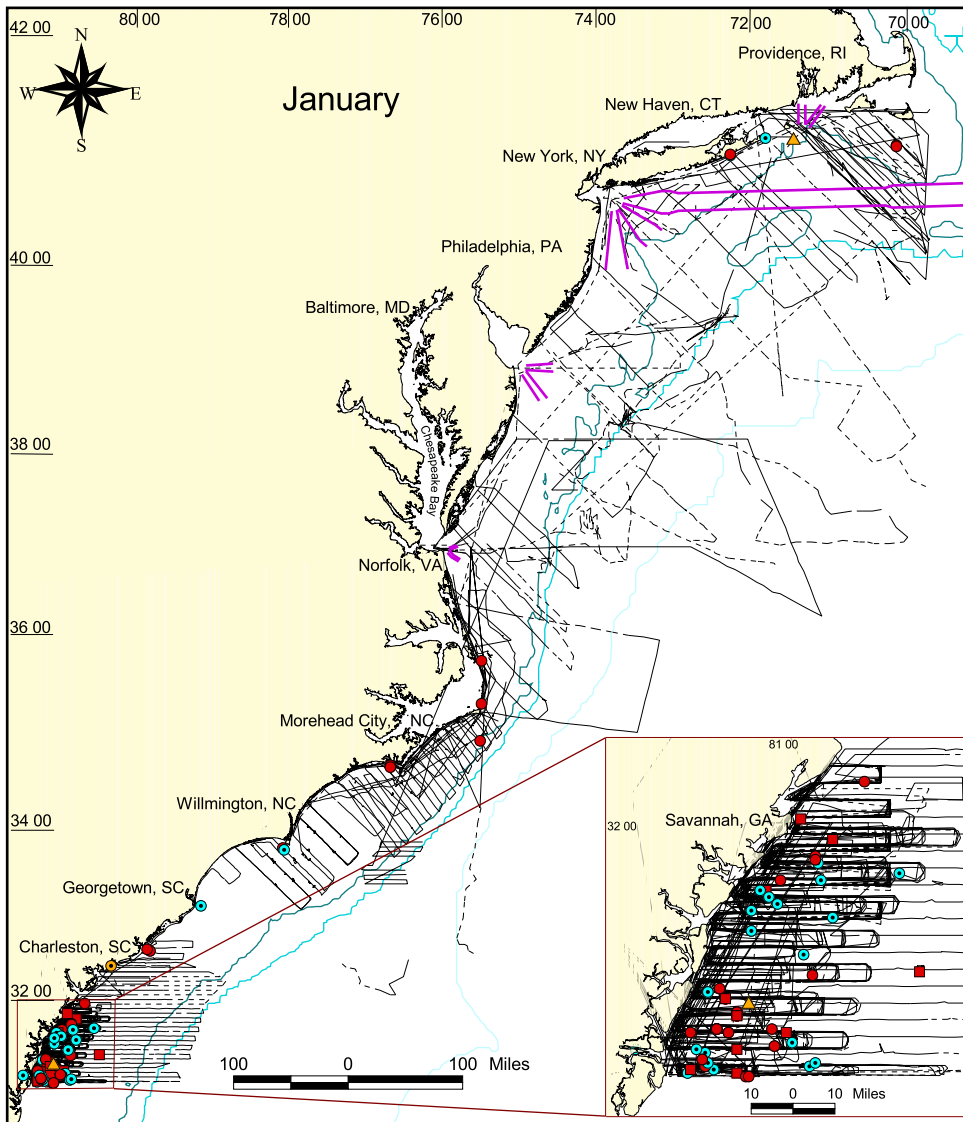


# Right Whale Sightings and Trackline Data for the Mid-Atlantic by Month 1974 - 2002



- 1 right whale
- 2 - 5 right whales
- ◆ 6 - 8 right whales
- Satellite tagged right whale
- ⊙ Satellite tagged mother with calf
- ⊕ Mother with calf
- Dead right whale calf
- ▲ Dead right whale adult

### Survey Tracklines

- Tracklines surveyed with 'good' effort
- - - - - Tracklines surveyed with 'bad' effort

### Bathymetry

- 50 meters
- 100 meters
- 150 meters

### Shipping lanes

Created by J. Beaudin Ring  
July, 2002

Mercator projections (central meridian = 75.5).  
Coastal coverage obtained from  
<http://woodshole.er.usgs.gov>.  
Bathymetric data based on ETOPO5  
bathymetry.

Sightings and trackline data contributors include:  
Cetacean and Turtle Assessment Program,  
Coastwise Consulting, Continental Shelf  
Associates, Georgia Department of Natural  
Resources, New England Aquarium, NOAA  
Fisheries, Oregon State University, University  
of Rhode Island, and University of North  
Carolina Wilmington.