

WISCONSIN EMERGENCY RECOVERY PLAN

And

Damage Survey Report Guidance



For the
EMERGENCY
WATERSHED
PROTECTION (EWP)
PROGRAM



TABLE OF CONTENTS

EWP Program -----	1
EWP Program at a Glance -----	2
NRCS Contacts -----	3
EWP Program Initiation -----	3
Key Cooperating Agencies -----	4
Primary Agency/Organization Contacts -----	5
Potential Sponsors -----	7
Sponsors Responsibilities -----	8
Emergency Recovery Process Flow Chart -----	9
Typical Flood Recovery Activities -----	10
Permits -----	12
Damage Survey Report – DSR -----	13
Cooperative Agreements -----	13
Environmental Considerations -----	14
Public Information Plan -----	15
6 part folder organization and DSR checklist -----	16
Appendix -----	17
Appendix A – Sample Letter of Request -----	18
Appendix B – Blank DSRs and DSR Instructions -----	20
Appendix C -----	37
DSR Sample #1 Brush pile at a culvert -----	38
DSR Sample #2 Erosion at a Bridge Abutment -----	52
DSR Sample #3 Levee Breach -----	66
DSR Sample #4 AS Erosion of PL-566 dam -----	80
DSR Completion Instructions -----	94
Help sheets for completing a DSR (census) -----	97
Help sheets of completing a DSR (sec 5A) -----	103
Appendix D – Cooperative Agreements -----	105
Appendix E – Sample Press Releases -----	119
EWP Program Manual can be found at: http://directives.sc.egov.usda.gov/	



EMERGENCY WATERSHED PROTECTION PROGRAM

NRCS' Emergency Watershed Protection (EWP) program is authorized by

- Section 216 of the Flood Control Act of 1950, PL 81-516, 33 U.S.C. 701b-1;
- Section 403 of the Agricultural Credit Act of 1978, PL 95-334, as amended by
- Section 382, of the Federal Agriculture Improvement and Reform Act of 1996, Farm Bill, PL 104-127, 16 U.S.C. 2203

to provide technical and financial assistance for emergency watershed protection.

The emergency recovery plan contains information to assist NRCS and sponsors to efficiently and effectively implement EWP measures in the event of a natural disaster.

Codified rules for administration of the Emergency Watershed Protection program are set forth in 7 CFR 624. Emergency watershed protection consists of measures to reduce hazards to life and property from floods, drought, and the products of excessive runoff or erosion on any watershed impaired by a natural occurrence.

Watershed impairment exists when the ability of a watershed to carry out its natural function is reduced to the extent of creating an imminent threat to life or property. Watershed impairments resulting from long-term combinations or a series of natural or other occurrences are not considered sudden watershed impairments.

The Wisconsin EWP program Emergency Recovery Plan (ERP) represents NRCS' commitment to comprehensive pre-disaster planning. The ERP provides guidance and establishes responsibilities concerning the administration of the EWP program.

The EWP Program technical and financial assistance may be made available upon the request of a qualified sponsor or landowner when a federal emergency is declared by the President, or when a local emergency is declared by the NRCS State Conservationist (STC).

The U.S. Department of Agriculture (USDA) prohibits discrimination in all its programs and activities on the basis of race, color, national origin, sex, religion, age, disability, political beliefs, sexual orientation, or marital or family status. (Not all prohibited bases apply to all programs.) Persons with disabilities who require alternative means for communication of program information (Braille, large print, audiotope, etc.) should contact USDA's TARGET Center at (202) 720-2600 (voice and TDD).

To file a complaint of discrimination, write USDA, Director, Office of Civil Rights, Room 326-W, Whitten Building, 1400 Independence Avenue, SW, Washington, D.C. 20250-9410 or call (202) 720-5964 (voice and TDD). USDA is an equal opportunity provider and employer.

EWP PROGRAM AT A GLANCE

- Emergency Watershed Protection Program is administered by USDA/NRCS
- Assists sponsors to implement emergency recovery measures to relieve imminent hazards to life and property created by a natural disaster
- If the President declares an area a “major disaster area”, all emergency work will be coordinated through the Federal Emergency Management Agency (FEMA). However, FEMA will not coordinate NRCS work unless conflicts arise from adjacent sites
- EWP program technical and financial assistance may also be made available when a local emergency is declared by the NRCS State Conservationist
- EWP program funds will assist in the installation of emergency measures to reduce hazards to life and property and reduce future disaster costs
- All EWP practices must be economically, socially, and environmentally defensible. They must only restore the site to pre-disaster conditions.
- Floodplain easements are one component of the EWP program to reduce flood damage on eligible land.
- NRCS provides up to 75 percent of the cost of the treatment or approved structural repairs needed to restore the natural function of a watershed. The sponsor pays the remaining 25 percent, which can be provided by direct cash expenditures or the value of in-kind construction services. Construction services include costs associated with materials, equipment, and labor.
- Typical EWP program practices in Wisconsin include;
 - Sediment or debris removal
 - Stream bank stabilization
 - Levee, dike, and dam repair
 - Grade stabilization
 - Erosion control
 - Floodplain easements
 - PL-566 dam repairs

EWP funds may be used to repair previously installed measures funded through Public Law 83–156, Public Law 83–566, Public Law 78–534, or Public Law 97–98 (RC&D) provided the following criteria are met: (i) All operation and maintenance responsibilities of the sponsors have been performed and are current. (ii) No engineering or structural deficiencies existed before the disaster that impacted the damaged portion of the structure.

NRCS does not intend to overlap the EWP program with Emergency Conservation Program (ECP). EWP assistance would only be applicable when the emergency measures are not eligible for assistance under ECP. USDA Farm Service Agency's (FSA) Emergency Conservation Program provides emergency funding and technical assistance for farmers and ranchers to rehabilitate farmland damaged by natural disasters and for carrying out emergency water conservation measures in periods of severe drought.

NRCS Contacts

NRCS District Conservationists

(http://www.nrcs.usda.gov/Internet/FSE_DOCUMENTS/stelprdb1119052.pdf)

NRCS field office locations and phone numbers)

State NRCS Program Management and Administration

John Ramsden, State Conservation Engineer; EWP Program Manager,
608-662-4422 x 234
john.ramsden@wi.usda.gov

Scott Mueller; Assistant State Conservation Engineer; EWP Program Leader
608-662-4422 x 265
scott.mueller@wi.usda.gov

EWP Program Initiation

Each county has an assigned NRCS District Conservationist (DC). Following a natural disaster that creates a sudden watershed impairment, the DC will tour the county with potential sponsors to evaluate any damages that meet EWP program criteria.

http://www.nrcs.usda.gov/Internet/FSE_DOCUMENTS/stelprdb1119052.pdf

The DC will contact their Assistant State Conservationist - Field Operations to activate the area Damage Survey Report (DSR) team (one per area), consisting of the following:

- Area Engineer
- Area Resource Conservationist
- Area Biologist
- Area GIS Specialist

The team will complete a Damage Survey Report (DSR) with the sponsor to determine eligibility, planning alternatives, practice(s) needed to protect the site, cost estimate, and the needed forms for contracting and engineering and act as the liaison between the sponsor and the NRCS contracting section as well as with program managers.

Wisconsin's State Conservationist will determine if a local emergency should be declared and the need for requesting EWP program funds from NRCS headquarters based upon the on-site reviews if the President does not declare an area a "major disaster area".

If the EWP program is funded for the event, sponsors will work directly with their respective NRCS DC and DSR team on individual sites that are damaged.

KEY COOPERATING AGENCIES

State Level Coordination

The Wisconsin Emergency Management Government coordinates all emergency efforts *when a federal disaster has been declared*. The Hazard Mitigation Officer convenes an Interagency Hazard Mitigation Team for the purposes of reviewing applications received from communities for program funding. The EWP Program Manager coordinates with the Hazard Mitigation Officer on EWP program requests and funding. In turn the Hazard Mitigation Officer informs applicants for emergency assistance of opportunities for assistance through the EWP program.

The State Emergency Board consists of the USDA agency heads in the state which administer emergency programs. The State Executive Director of FSA is the designated chairperson. This group is composed of the state leaders or their representatives from the Farm Service Agency, the Natural Resources Conservation Service, the National Agricultural Statistics Service, the Animal Plant Health and Inspection Service, the Food and Consumer Service, Food Safety and Inspection Service, Forest Service, Extension Service, Rural Development, and the Rural Utility Service. The purpose of this group is information sharing and coordination within USDA so that any emergency response efforts are not duplicated. This coordination occurs whether or not a federal disaster has been declared. Meetings are called as needed.

PRIMARY AGENCY/ORGANIZATION CONTACTS

Agency	Contact	Address, Telephone, and E Mail Address	Notes
Federal Emergency Management Agency (FEMA)	Mark Peterson	Federal Emergency Management Agency 536 South Clark St., 6th Floor Chicago, IL 60605 (312) 408-4469 mark.peterson2@dhs.gov	Congressional / Intergovernmental Contact http://www.fema.gov/region-v-il-mi-mn-oh-wi
Wisconsin State Emergency Management Government	Roxanne Gray	Department of Military Affairs Wisconsin Emergency Management 2400 Wright Street P.O. Box 7865 Madison, WI 53707-7865 1-800-943-0003 (608) 242-3211 roxanne.gray@wisconsin.gov	Hazard Mitigation Officer Statewide coordination of all Emergency efforts. Chairs Interagency Hazard Mitigation Team. http://emergencymanagement.wi.gov/
Wisconsin Department of Natural Resources	Meg Galloway	Dams and Floodplain Section 101 South Webster St., Box 7921 Madison, WI 53707 (608) 266-7014 meg.galloway@wisconsin.gov	Section Chief http://dnr.wi.gov/topic/dams/
State Historical Society of Wisconsin	Chip Brown	Division of Historic Preservation 816 State Street Madison, WI 53706 Phone: 608-264-6508 Fax: 608-264-6504 E-mail: chip.brown@wisconsinhistory.org	Government Assistance and Training Specialist http://www.wisconsinhistory.org
Farm Service Agency	Brad Pfaff	8030 Excelsior Drive. Suite 100 Madison, WI 53717-2906 (608)662-4422 (608)662-9425 (fax)	State Executive Director

US Fish & Wildlife Service	Pete Fasbender	Wisconsin Ecological Services Office 2661 Scott Tower Road New Franken, WI 54229-9565 (920) 866-1725 (920) 866-17101 (fax) Peter_Fasbender@fws.gov	Field Supervisor For information on federally listed threatened and endangered species. http://www.fws.gov/midwest/GreenBay/
Wisconsin Dept. of Natural Resources Bureau of Endangered Resources	Rori Paloski	101 S Webster Street - ER/6 Madison WI 53703 608-264-6040 rori.paloski@wisconsin.gov	For information on state listed threatened and endangered species http://dnr.wi.gov/topic/endangeredresources/ETList.html
Wisconsin Dept. of Natural Resources	Pam A Biersach Pawloski	101 S Webster Street Madison WI, 53703 (608) 261-8447 pamela.biersach@wisconsin.gov	Division of Water Watershed Management Bureau Director Dam Safety, Floodplain Management Shoreland Zoning, Statewide Policy Storm Water Permits, Statewide Policy Waterway Permits, Statewide Policy Wetland Permits, Statewide Policy Wetland Policy Statewide
U.S. Army Corps of Engineers	Rebecca Graser	20711 Watertown Road Suite F Waukesham WI 53186 (262) 717-9531, extension 3 Rebecca.M.Graser@usace.army.mil	USACE-WI Program Manager ASACOE permits Section 10 of the Rivers and Harbors Act of 1899 Section 404 of the Clean Water Act

POTENTIAL SPONSORS

EWP program recovery assistance is made available through a local sponsor.

Sponsors must be;

- Local unit or subdivision of state government
- State government
- Native American tribes

➤ **Potential Sponsors**

Drainage districts

Watershed districts

Land and Water Conservation Departments

County governments

Municipal, township or local unit of government

Native American Tribes

County Emergency Management Directors

<http://emergencymanagement.wi.gov/>

Resources

Directory of County Emergency Management Directors

Land Conservation Committees

Refer to the booklet “Wisconsin Land Conservation Directory 2008-2010 – Departments, Committees, and Cooperating Agencies” for potential county sponsors.

This is a listing of county land conservation committees and county land conservation departments, along with listings for cooperating state and federal agencies.

www.datcp.state.wi.us

Key word search: LCD Directory

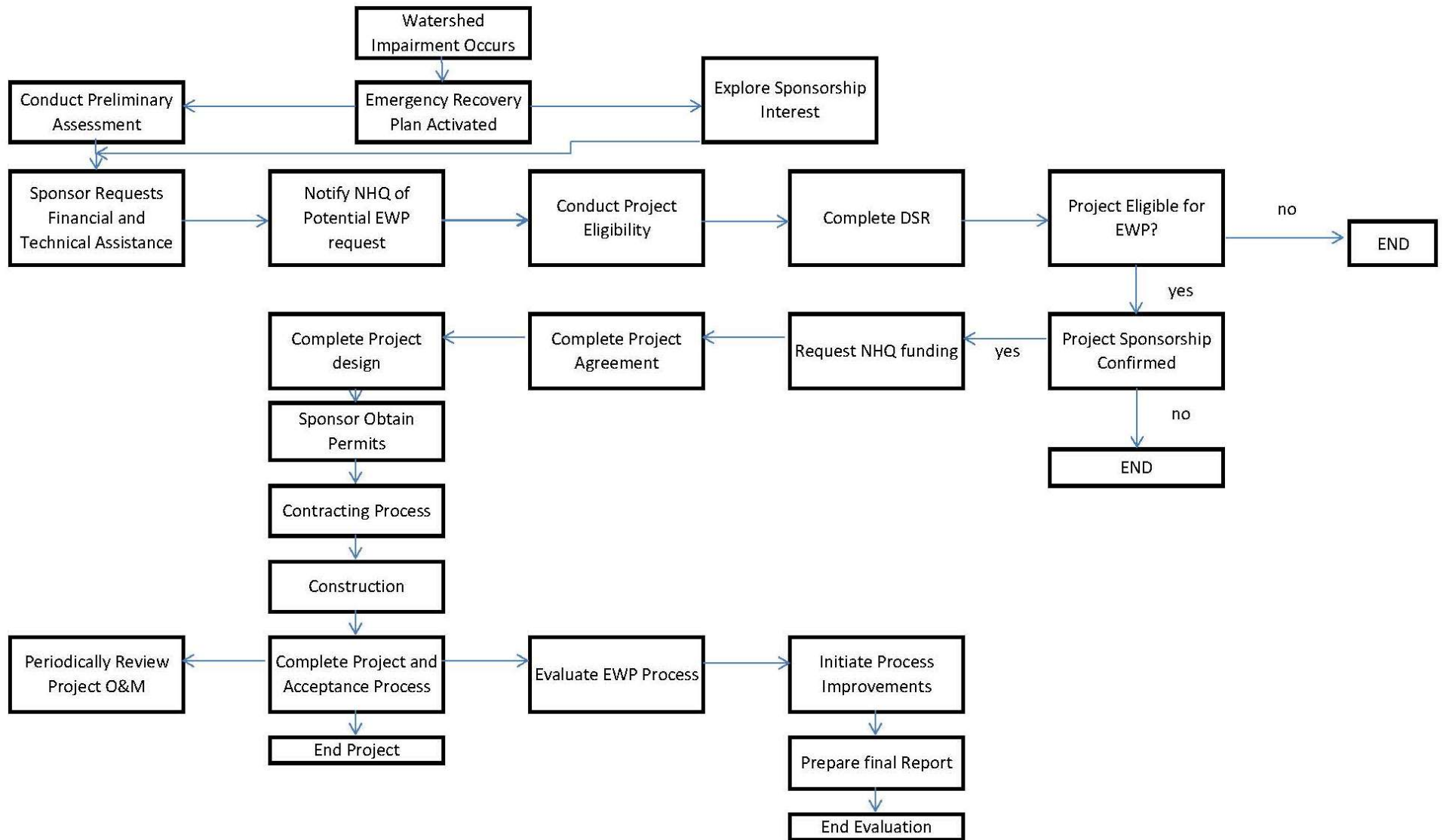
Wisconsin Native American Tribes

http://www.nrcs.usda.gov/wps/portal/nrcs/detail/wi/contact/?cid=nrcs142p2_020957

Sponsors Responsibilities

- Initially the sponsors will coordinate with the county NRCS district conservationist.
- Submitting an initial written request to the STC requesting NRCS assistance with appropriate documentation within 60 days after the event. (Sample request letters - Appendix A)
- Accepting requests for assistance from landowners
- Publicizing the availability of the EWP Program.
- Conducting outreach to underserved populations.
- Participating on a Damage Survey Report (DSR) team as needed.
- Entering into a written agreement with the NRCS outlining responsibilities and obligations. (Appendix D)
- Providing the required local share of installation costs (direct cash expenditures or the value of in-kind materials and/or construction services). Construction services include costs associated with materials, equipment, and labor.
- Helping to establish priorities for work.
- Obtaining the necessary real property rights, including any rights needed for the relocation of fences, bridges, etc.
- Obtaining a signed form NRCS-ADS-78, Assurances Relating to Real Property Acquisition, and a signed attorney's opinion, as appropriate.
- Acquiring all required federal, state, Tribal, and local permits prior to construction.
- Ensuring utilities are located (Diggers Hotline), arranging for any necessary relocation of utilities, and obtaining any necessary easements before construction begins.
- Accepting the completed work for projects installed using locally awarded contracting procedures as appropriate.
- Executing an operation and maintenance (O&M) agreement and ensuring compliance with the O&M plan as necessary.
- Maintaining files on each EWP program funded project.

Emergency Watershed Protection Recovery Plan
Emergency Recovery Process Flow Chart



Typical Flood Recovery Activities

To be eligible for EWP program assistance, a measure must reduce threats to life or property, retard runoff to prevent flooding and/or soil erosion, restore hydraulic capacity, or remove debris deposited by the disaster that might pose a health or safety hazard. Measures must be defensible, economically, socially, environmentally, technically, and yield beneficial effects to more than one individual (except in an urgent and compelling situation where single beneficiaries are permitted). Measures are limited to what is necessary to reduce identified threats to a level not to exceed that which existed prior to the watershed impairment.

Some of the more common measures are, but not limited to, the following

- **Streambank stabilization (NRCS Practice Standard 580 – Streambank and Shoreline Protection and 584 Stream Channel Stabilization)**

Re-shaping and re-vegetating eroding banks that endanger homes, businesses and utilities. This may also include placement of rock, sloping, seeding, and shaping, gabions, bioengineering barbs and other fluvial geomorphology techniques, and realignment of banks to restore hydraulics of stream system.

- **Debris and sediment removal (NRCS Practice Standard 500- Obstruction Removal)**

Removal of impediments to stream system including materials instream or on adjacent banks. The purpose is to restore the hydraulic capacity of the stream system. To justify removal, debris and sediment must be creating a threat to life or property. Materials may consist of sediments, woody debris, man made materials, or any other items which constitute impairment to the hydraulic capacity of the stream.

- **Road and Bridge protection (NRCS Practice Standard 500 – Obstruction Removal)**

Removal of debris from bridge openings and upstream of bridge openings. Stabilize dangerously eroded banks around bridge openings which threaten the integrity and safety of the bridge. The purpose is to prevent obstructions in the stream from becoming problems which damage or destroy the bridge and roadway. Removing threats to Federal-aid highways except where the Federal-aid highway protection would be incidental to other eligible protection is not eligible.

See <http://www.fhwa.dot.gov/hep/23cfr470.htm> or <http://www.dot.wi.gov/localgov/highways/stp-rural.htm> for definition of federal aid highways.

- a. “Federal-aid highways means: highways on the Federal-aid highway systems and all other public roads not classified as local roads or rural minor collectors.”
- b. The Surface Transportation Program Rural (STP-R) allocates federal funds to complete a variety of improvements to rural highways (primarily county highways).

The objective of the STP-R is to improve federal aid eligible highways outside of urban areas. Projects must meet federal and state requirements. Communities are eligible for funding on roads classified as major collectors or higher.

- **Dike, levee or dam repair**

The Corps of Engineers is responsible for all primary levees in the Mississippi River floodplains. Work on levees with more than 400 square miles of drainage area is prohibited. Other dikes, levees or dams may be repaired, provided the repair meets all other EWP program criteria.

EWP funds may be used to repair previously installed measures funded through Public Law 83–156, Public Law 83–566, Public Law 78–534, or Public Law 97–98 (RC&D) provided the following criteria are met:

- (i) All operation and maintenance responsibilities of the sponsors have been performed and are current.
- (ii) No engineering or structural deficiencies existed before the disaster that impacted the damaged portion of the structure.

- **Erosion control (NRCS Practice 342 – Critical Area Planting)**

Reseeding of areas that are eroding excessively. In areas where there is insufficient cover and which has the potential to cause downstream flooding due to loss of hydraulic capacity from the resultant sedimentation, or where further erosion may constitute a threat to lives or property.

- **Floodplain easements**

Permanent floodplain easements may be purchased under limited conditions. Landowners give up the rights to develop and crop lands on which easements are purchased. To be eligible, the land must have been flooded at least twice in the last ten years, or had impairment in the past 12 months. Emphasis for floodplain easements is on large, contiguous segments, working toward the establishment of corridors. EWP program funds may also be used to partner with other agencies to acquire easements when the easements would achieve EWP program goals.

The NRCS can purchase perpetual agricultural floodplain easements. To be eligible, flooding must have damaged the land to the extent that the cost of restoring it and associated structures would be greater than the value of the land after restoration. The easements provide permanent restoration of the natural floodplain hydrology as an alternative to traditional attempts to restore damaged levees, lands, and structures.

Landowners will be compensated based on the least of the following values: 100 percent of the agricultural or other undeveloped/raw value of the land; the geographic cap where one is established; or landowner offer. The EWP program funds may cover up to 100 percent of the cost for land treatment practices and all administrative survey, title insurance, and other costs associated with establishing the easement. All easements must be economically, environmentally, and socially defensible.

All private, public and Tribal lands are eligible. Sponsors are not needed to acquire easements. NRCS works directly with individual landowners for easement purchases.

Permits

Water Management Specialists County Contacts can be found at:
http://dnr.wi.gov/topic/Waterways/about_us/county_contacts.html

The list identifies the DNR Water Management Specialists (WMS) for each county in Wisconsin, and provides a link to their e-mail address. Permit applications will be shared with the U.S. Army Corps of Engineers for their analysis.

For additional contacts concerning waterfront property, contact the local zoning office, or visit:

http://wccadm.com/staff_directory.htm

The list identifies the waterfront-related permit contacts for each county in Wisconsin, and provides a link to their e-mail address.

Click either on a county in the map or on the name of the county listed below the map

If you live in a town, you may also need to contact your local town office, as well as your county office, regarding permits.

If you live in a city or village, you will need to contact your city or village office instead of the county office.

For erosion control and stormwater management regulations on projects that have one or more acres of land disturbance, you will also need to contact:

<http://dnr.wi.gov/topic/stormwater/>

The list identifies the DNR Storm Water Staff Specialists for each county in Wisconsin, and provides a link to their e-mail address.

DAMAGE SURVEY REPORT - DSR

The DSR describes the damage to an individual site. One is completed for every potential site. It describes the scope, nature of the planned work, and impacts of that work. It is the basis for providing EWP program funds. The DSR is completed by the DSR team along with the sponsor's representative.

The DSR documents agency actions that are consistent with the National Environmental Policy Act (NEPA) and the National Historic Preservation Act (NHPA). The DSR also documents estimated costs and benefits, thus helping program managers determine the economic worthiness of individual projects.

A blank DSR can be found in Appendix B.

Guidance for completing the DSR can be found in the ENVIRONMENTAL CONSIDERATIONS section of this document. Four sample DSRs and help sheets are included in Appendix C.

For exigency sites, the initial DSR may cover just the work necessary to relieve the exigency situation. This work must be completed within 10 days of discovery of the site. A second DSR may be necessary to alleviate any remaining hazard causing an emergency situation.

COOPERATIVE AGREEMENTS

Cooperative Agreement Administration

Information from the DSR is used in the EWP program to develop cooperative agreements with the sponsor. While one DSR is used for each damaged site, the cooperative agreement can contain projects from numerous DSR's to reduce the number of agreements. Additional sites and dollars can be obligated through amendments to the original cooperative agreement.

NRCS requires that expenditures be documented on a DSR basis. NRCS recommends that individual bid schedules be developed for each DSR, even if multiple DSR's are included in one contract.

Sponsors should keep NRCS informed, usually through the liaison; if engineering estimates or contracted amounts exceed those described in the cooperative agreement.

An example cooperative Agreement can be found in Appendix D.

ENVIRONMENTAL CONSIDERATIONS

All EWP program activities are conducted in compliance with the National Environmental Policy Act (NEPA), National Historic Preservation Act, the Clean Water Act, and other applicable laws. Any required permits are obtained prior to work beginning for recovery work.

When planning restoration measures, special emphasis should be placed on selecting measures that will improve the environment. NEPA requires Federal agencies to examine and document the environmental consequences of Federal actions. NEPA requires NRCS to follow a process that culminates in a document that must be available to the public.

The NEPA handbook defines the resource concerns (section 2A-D) and considerations (section 2E) in the DSR. The short and long term and cumulative effects of the existing condition, proposed action(s) and no action alternatives are documented in the DSR.

http://www.nrcs.usda.gov/Internet/FSE_DOCUMENTS/nrcs142p2_019796.pdf

The WI-CPA-52 form lists some, but not all, potential resource concerns that may exist at a site.

http://www.nrcs.usda.gov/wps/portal/nrcs/detail/wi/technical/?cid=nrcs142p2_020800

Code items

- | | | |
|-------|------------------|--|
| (+) | Positive Effects | • Explain all (+) and (-) effects |
| (0) | No Effect | • Explain if <u>on-site</u> or <u>off-site</u> |
| (-) | Negative Effects | • Consider short term (ST) and |
| (n/a) | Not Applicable | long term (LT) effects. |

Additional resource concerns and quality criteria can be found at:

<http://efotg.sc.egov.usda.gov/references/public/WI/T&Eclassification.pdf>

What effect does the **Existing condition** have on the Special Environmental Concern (SEC)?

What effect does the **Proposed action** (pg 3- section2C) have on the SEC?

What effect does the **No Action** (pg 3- section 2C) have on the SEC?

Cultural Resources Review Request Procedure

An initial cultural resources review is required prior to conducting any ground disturbing activity which has the potential to affect significant historic or prehistoric properties. The guide, in section II of the WI-FOTG, outlines the steps to be followed in determining whether a review is required and the information needed when requesting an initial cultural resources review.

<http://efotg.nrcs.usda.gov/references/public/WI/CRcompliance.pdf>

NHI Review Process

Field Offices will complete the Project Information Section of the WI Natural Heritage Inventory (NHI), electronic Form ER, and email it to their NHI Reviewer. Two aerial photos showing the specific site of the activity will also be submitted.

<http://dnr.wi.gov/files/PDF/forms/1700/1700-047fillable.pdf>

Public Information Plan

News releases or story leads may be prepared by either the Wisconsin NRCS Public Affairs Specialist or by the District Conservationist. Contacts will be made to local radio, television or print media as appropriate providing locally relevant information.

An EWP program fact sheet is located at the following location.

<ftp://ftp-fc.sc.egov.usda.gov/WI/watersheds/EWPfs.pdf>

**NRCS Public Affairs specialist; Renae Anderson; renae.anderson@wi.usda.gov
608-662-4422 x227**

Sample EWP program press releases are shown in Appendix E.

6 part folder organization

EWP DSR Checklist

Tab 1 Correspondence

- Request letter
- Reply letter from STC
- Agreement letters

Environmental Evaluations

Engineering Cost Estimate

Economics

Tab 2 Agreements and Amendments

- Project Agreements
- Amendments
- ADS-078
- Authorization Letters
- Sponsor Board minutes

Census Data

Site Map

Pictures

Tab 3 Information/Determinations

- Complete DSR (w/ signatures)
- DSR back up data
- Field notes
- Photos
- Maps
- Cultural Resource letters
- NHI letters

Prime Farmland Map

Hydric Soils Map

Cultural Resources Request

Cultural Resources Topographic Map

NHI Request

Tab 4 Payment Information

- FFIS Obligation
- SF-1199

Sponsor Signature

DSR Team Representative Signature

Tab 5 Payments

- FFIS Payment
- SF-270
- SF-270 Documentation

DSR Number = YR-NX-FIPs-Sp-A

Tab 6 Reports/Other

- Design
- Plans
- Specifications

YR – fiscal year

NX – non exigency

or X – exigency

FIPs – county FIPS code

Sp – Sponsor Name

A – Consecutive letter

APPENDICES

APPENDIX A: SAMPLE LETTERS OF REQUEST

State Conservationist
USDA Natural Resources Conservation Service
8030 Excelsior Drive, Suite 200
Madison, WI 53717

Dear State Conservationist:

We hereby request Federal assistance under the provisions of Section 403, Agricultural Credit Act of 1978, to undertake the process of restoring the (water body name) in numerous locations. The watershed impairment was caused by the (storm date). (Briefly explain the damage).

The respective rivers are now full of downed trees, and this will cause flooding, possible rerouting of the river and severe damage to bridges if not cleared. We have identified a non-navigable stretch that is in need of immediate attention.

We understand, as sponsors of the emergency watershed protection project, that our responsibilities include acquiring land rights and all permits necessary to construct and maintain any proposed measures. We are prepared to provide the 25 percent local cost share for this work.

If you have any questions, please contact me.

Sincerely,

Sponsor Representative

State Conservationist
USDA Natural Resources Conservation Service
8030 Excelsior Drive, Suite 200
Madison, WI 53717

Dear: State Conservationist

We request Federal assistance under the provisions of Section 216, Public Law 516, to restore damages sustained in *<Enter Name of County, City, etc.>* by storms of *<Enter Name and/or Type of Disaster that Occurred>* on *<Enter Date Disaster Occurred>*. This work is needed to safeguard lives and property from an imminent hazard of *<Enter Hazard Type>*.

Due to *<Enter Type of Disaster on Enter Date>* the *<Describe the type or types of damage and locations (e.g. Streambank next to the County Road Bridge 2A is eroding and threatening to damage the bridge and eventually take the bridge out if the erosion is not stopped.)>*

We understand, as sponsors of an Emergency Watershed Protection project that our responsibilities will include acquiring real property rights and any permits needed to construct, and if required, to operate and maintain the proposed measures.

We do not have sufficient funds to provide adequate relief from the *<Enter Name of Disaster>* hazards. We understand that as a sponsor of this project we are required to provide a minimum of 25% of the total installation cost.

The names, addresses, and telephone numbers of the administrative and technical contact persons in our organization are as follows:

<Enter Name>
<Title>>
<Address>
<Telephone Number>
<Email address>

Please contact *<Enter Person's Name from Above Paragraph>* for any additional information that you might need in assessing our request.

Sincerely,

<Enter Name>
<Enter Title

APPENDIX B

Blank DSR

**DAMAGE SURVEY REPORT (DSR)
 Emergency Watershed Protection Program - Recovery**

Section 1A

Date of Report: _____

DSR Number: _____ Project Number: _____

NRCS Entry Only	
Eligible:	<input type="checkbox"/> YES <input type="checkbox"/> NO
Approved:	<input type="checkbox"/> YES <input type="checkbox"/> NO
Funding Priority Number (from Section 4):	_____
Limited Resource Area:	<input type="checkbox"/> YES <input type="checkbox"/> NO

Section 1B Sponsor Information

Sponsor Name: _____ Contact: _____

Address: _____

City/State/ZIP: _____ / _____ / _____

Telephone Number: _____ Fax: _____

Section 1C Site Location Information

County: _____ State: _____ Congressional District: _____

Latitude: _____ Longitude: _____ Section: _____ Township: _____ Range: _____

UTM Coordinates: _____ E _____ N Zone: _____ Units: _____

Drainage Name: _____ Reach: _____

Damage Description: _____

Section 1D Site Evaluation

All answers in this section must be YES in order to be eligible for EWP Assistance.

Site Eligibility	YES	NO	Remarks
Damage was a result of a natural disaster?*	<input type="checkbox"/>	<input type="checkbox"/>	
Recovery measures would be for runoff retardation or soil erosion prevention?*	<input type="checkbox"/>	<input type="checkbox"/>	
Threat to life and/or property?*	<input type="checkbox"/>	<input type="checkbox"/>	
Event caused a sudden impairment in the watershed?*	<input type="checkbox"/>	<input type="checkbox"/>	
Imminent threat was created by this event?***	<input type="checkbox"/>	<input type="checkbox"/>	
For structural repairs, not repaired twice within ten years?***	<input type="checkbox"/>	<input type="checkbox"/>	
Site Defensibility			
Economic, environmental and social documentation adequate to warrant action? (Go to pages 3, 4, 5 and 6 ***)	<input type="checkbox"/>	<input type="checkbox"/>	
Proposed action technically viable? (Go to page 9 ***)	<input type="checkbox"/>	<input type="checkbox"/>	

Have all the appropriate steps been taken to ensure that all segments of the affected population have been informed of the EWP program and its possible effects? YES NO

Comments: _____

* Statutory

** Regulation

*** DSR Pages 3 through 5 are required to support the decisions recorded on this summary page. If additional space is needed on this or any other page in this form, add appropriate pages.

DSR Number: _____

Section 1E Proposed Action

Describe the preferred alternative from Findings, Section 5A:

Total installation cost identified in this DSR, Section 3: \$ _____ -

Section 1F NRCS State Office Review and Approval

Reviewed By: _____ Date Reviewed: _____
State EWP Program Manager

Approved By: _____ Date Approved: _____
State Conservationist

PRIVACY ACT AND PUBLIC BURDEN STATEMENT

NOTE: The following statement is made in accordance with the Privacy Act of 1974, (5 U.S.C. 552a) and the Paperwork Reduction Act of 1995, as amended. The authority for requesting the following information is 7 CFR 624 (EWP) and Section 216 of the Flood Control Act of 1950, Public Law 81-516, 33 U.S.C. 701b-1; and Section 403 of the Agricultural Credit Act of 1978, Public Law 95334, as amended by Section 382, of the Federal Agriculture Improvement and Reform Act of 1996, Public Law 104-127, 16 U.S.C. 2203. EWP, through local sponsors, provides emergency measures for runoff retardation and erosion control to areas where a sudden impairment of a watershed threatens life or property. The Secretary of Agriculture has delegated the administration of EWP to the Chief or NRCS on state, tribal and private lands. Signing this form indicates the sponsor concurs and agrees to provide the regional cost-share to implement the EWP recovery measure(s) determined eligible by NRCS under the terms and conditions of the program authority. Failure to provide a signature will result in the applicant being unable to apply for or receive a grant the applicable program authorities. Once signed by the sponsor, this information may not be provided to other agencies, IRS, Department of Justice, or other State or Federal Law Enforcement agencies, and in response to a court or administrative tribunal. The provisions of criminal and civil fraud statutes, including 18 U.S.C. 286, 287, 371, 641, 651, 1001; 15 U.S.C. 714m; and 31 U.S.C. 3729 may also be applicable to the information provided. According to the Paperwork Reduction Act of 1995, an agency may not conduct or sponsor, and a person is not required to respond to a collection of information unless it displays a valid OMB control number. The valid OMB control number for this information collection is 0578-0030. The time required to complete this information collection is estimated to average 117/1.96 minutes/hours per response, including the time for reviewing instructions, searching existing data sources, field reviews, gathering, designing, and maintaining the data needed, and completing and reviewing the collection information.

USDA NONDISCRIMINATION STATEMENT

"The U.S. Department of Agriculture (USDA) prohibits discrimination in all its programs and activities on the basis of race, color, national origin, age, disability, and where applicable, sex, marital status, familial status, parental status, religion, sexual orientation, genetic information, political beliefs, reprisal, or because all or part of an individual's income is derived from any public assistance program. (Not all prohibited bases apply to all programs.) Persons with disabilities who require alternative means for communication of program information (Braille, large print, audiotape, etc.) should contact USDA's TARGET Center at (202)720-2600 (voice and TDD). To file a complaint of discrimination, write to USDA, Director, Office of Civil Rights, 1400 Independence Avenue, SW., Washington, DC 20250-9410, or call (800)795-3272 (voice) or (202) 720-6382 (TDD). USDA is an equal opportunity provider and employer.

Civil Rights Statement of Assurance

The program or activities conducted under this agreement will be in compliance with the nondiscrimination provisions contained in the Titles VI and VII of the Civil Rights Act of 1964, as amended; the Civil Rights Restoration Act of 1987 (Public Law 100-259); and other nondiscrimination statutes: namely, Section 504 of the Rehabilitation Act of 1973, Title IX of the Amendments of 1972, the Age Discrimination Act of 1975, and the Americans with Disabilities Act of 1990. They will also be in accordance with regulations of the Secretary of Agriculture (7 CFR 15, 15a, and 15b), which provide that no person in the United States shall on the grounds of race, color, national origin, gender, religion, age or disability, be excluded from participation in, be denied the benefits of, or otherwise subjected to discrimination under any program or activity receiving Federal financial assistance from the U.S. Department of Agriculture or any agency thereof.

DSR Number: _____

Section 2 Environmental Evaluation

2A Resource Concerns	2B Existing Condition	2C Alternative Designation		
		Proposed Action	No Action	Alternative
		2D Effects of Alternatives		
Soil				
Water				
Air				
Plant				
Animal				
Other				

DSR Number: _____

Section 2E Special Environmental Concerns

Resource Consideration	Existing Condition	Alternatives and Effects		
		Proposed Action	No Action	Alternative
Clean Water Act Waters of the U.S.				
Coastal Zone Management Areas				
Coral Reefs				
Cultural Resources				
Endangered and Threatened Species				
Environmental Justice				
Essential Fish Habitat				
Fish and Wildlife Coordination				
Floodplain Management				
Invasive Species				
Migratory Birds				
Natural Areas				
Prime and Unique Farmlands				
Riparian Areas				
Scenic Beauty				
Wetlands				
Wild and Scenic Rivers				

Completed By: _____

Date: _____

DSR Number: _____

Section 2F Economic

This Section must be completed for each alternative considered (attached additional sheets as necessary)

Proposed Action:	Future Damages (\$)	Damage Factor (%)	Near Term Damage Reduction
Properties Protected (Private)			
Properties Protected (Public)			
Business Losses			
Other			
Total Near Term Damage Reduction (\$)			
Cost from Section 3			
Net Benefit (Total Near Term Damage Reduction minus Cost from Section 3)			

Completed By: _____ Date: _____

Notes:

DSR Number: _____

Section 2F Economic

This Section must be completed for each alternative considered (attached additional sheets as necessary)

Alternative:	Future Damages (\$)	Damage Factor (%)	Near Term Damage Reduction
Properties Protected (Private)			
Properties Protected (Public)			
Business Losses			
Other			
Total Near Term Damage Reduction			
Cost from Section 3			
Net Benefit (Total Near Term Damage Reduction minus Cost from Section 3)			

Completed By: _____ Date: _____

Notes:

DSR Number: _____

Section 2G Social Considerations

(attach additional sheets as necessary)

	YES	NO	Remarks
Has there been a loss of life as a result of the watershed impairment?	<input type="checkbox"/>	<input type="checkbox"/>	
Is there the potential for loss of life due to damages from the watershed impairment?	<input type="checkbox"/>	<input type="checkbox"/>	
Has access to a hospital or medical facility been impaired by the watershed impairment?	<input type="checkbox"/>	<input type="checkbox"/>	
Has the community as a whole been adversely impacted by the watershed impairment (life and property ceases to operate in the normal capacity)	<input type="checkbox"/>	<input type="checkbox"/>	
Is there a lack or has there been a reduction of public safety due to the watershed impairment?	<input type="checkbox"/>	<input type="checkbox"/>	

Completed By: _____

Date: _____

DSR Number: _____

Section 2H Group Representation and Disability Information

This section is completed only for the preferred alternative selected.

Group Representation	Number
American Indian / Alaska Native Female Hispanic	
American Indian / Alaska Native Female Non-Hispanic	
American Indian / Alaska Native Male Hispanic	
American Indian / Alaska Native Male Non-Hispanic	
Asian Female Hispanic	
Asian Female Non-Hispanic	
Asian Male Non-Hispanic	
Asian Male Hispanic	
Black or African American Female Hispanic	
Black or African American Female Non-Hispanic	
Black or African American Male Hispanic	
Black or African American Male Non-Hispanic	
Hawaiian Native / Pacific Islander Female Hispanic	
Hawaiian Native / Pacific Islander Female Non-Hispanic	
Hawaiian Native / Pacific Islander Male Hispanic	
Hawaiian Native / Pacific Islander Male Non-Hispanic	
White Female Hispanic	
White Female Non-Hispanic	
White Male Hispanic	
White Male Non-Hispanic	
Total Group	

Census tract(s): _____

Completed By: _____ Date: _____

DSR Number: _____

Section 2I: Required consultation or coordination between lead agency and / or the RFO and another governmental unit including tribes

Easements, permissions or permits:

Mitigation Description:

Agencies, persons and references consulted or to be consulted:

DSR Number: _____

Section 4 NRCS EWP Funding Priority

Complete the following section to compute the funding priority for the recovery measures in this application (see instructions on page 10)

Priority Ranking Criteria	YES	NO		Ranking Number Plus Modifier
1. Is this an exigency situation?	<input type="checkbox"/>	<input type="checkbox"/>		
2. Is this site where there is serious, but not immediate threat to human life?	<input type="checkbox"/>	<input type="checkbox"/>		
3. Is this site where buildings, utilities or other important infrastructure components are threatened?	<input type="checkbox"/>	<input type="checkbox"/>		
4. Is this site a funding priority established by the NRCS Chief?	<input type="checkbox"/>	<input type="checkbox"/>		
The following are modifiers for the above criteria.			Modifier	
a. Will the proposed action or alternatives protect or conserve federally-listed threatened and endangered species or critical habitat?			<input type="checkbox"/> a	
b. Will the proposed action or alternatives protect or conserve cultural sites listed on the National Register or Historic Places?			<input type="checkbox"/> b	
c. Will the proposed action or alternatives protect or conserve prime or important farmland?			<input type="checkbox"/> c	
d. Will the proposed action or alternatives protect or conserve existing wetlands?			<input type="checkbox"/> d	
e. Will the proposed action or alternatives maintain or improve current water quality conditions?			<input type="checkbox"/> e	
f. Will the proposed action or alternatives protect or conserve unique habitat, including but not limited to, areas inhabited by State-listed species, fish and wildlife management area or State identified sensitive habitats?			<input type="checkbox"/> f	

Enter priority computation in Section 1A, NRCS Entry, Funding priority number

Remarks:

DSR Number: _____

Section 5A Findings

Finding: Indicate the preferred alternative from Section 2 (Enter to Section 1E):

I have considered the effects of the action and the alternatives on the Environmental, Economic, Social, the Special Environmental Concerns and the extraordinary circumstances (40 CFR 1508.27). I find for the reasons stated below, that the preferred alternative:

Has been sufficiently analyzed in the EWP PEIS (reference all that apply)

Chapter _____

Chapter _____

Chapter _____

Chapter _____

Chapter _____

May require the preparation of an environmental assessment or environmental impact statement.

The action will be referred to the NRCS State Office on this date: _____

NRCS representative of the DSR team:

Signature: _____

Name/Title _____

Date: _____

Section 5B Comments:

Section 5B Sponsor Concurrence:

Sponsor Representative:

Signature: _____

Name/Title _____

Date: _____

Section 6 Attachments:

- A. Location Map
- B. Site Plan or Sketches
- C. Other: _____

INSTRUCTIONS FOR COMPLETING THE NRCS-PDM-20, DSR

	Explanation of Requested Item	Who Completes
Section 1	Enter Site Sponsor, Location, Evaluation, Selected Alternative, and Reviewed and Approval Signatures.	NRCS completes with Voluntary assistance from Sponsor except for NRCS only portion of Section 1A.
1A	Enter the Date, DSR Number, Project Number. For NRCS only enter Eligible Yes/No, Approved Yes/No, Funding Priority Number, and Limited Resource Area Yes/No.	
1B	Sponsor Name, Address, Telephone, Fax	
1C	Enter site location County, State, Congressional District, Latitude, Longitude, Section, Township, Range, UTM Coordinates, Drainage Name, Reach within drainage, and Damage Description.	
1D	Enter Yes/No and any Remarks for the Site Evaluation information. Any No response means the site is not eligible for EWP assistance and no further information is necessary to complete the DSR. (See NEWPPM 390-502.03 and 390-502-04) Enter Yes/No regarding whether the affected public has been informed of the EWP program.	
1E	Enter the proposed treatment and the cost of installation. NRCS only.	
1F	NRCS Review and Approval.	

	Explanation of Requested Item	Who Completes
Section 2	Use available natural resource, economic, and social, information, including the EWP Programmatic Environmental Impact Statement (PEIS), to briefly describe the effects of the alternatives to the proposed action including the "no action" alternative. Typically, the proposed action and no action are the alternatives considered for EWP recovery measures due to the focus on repairing or preventing damages within a watershed. However, in cases where additional alternatives are considered, include all pertinent information to adequately address the additional alternatives (e.g., proposed action would be bio-engineering for bank stabilization, no action alternative, and an additional alternative may be riprap for bank stabilization). Do not leave blanks where a consideration is not applicable, use NA to indicate the factor was considered but not applicable for the alternative.	NRCS completes with voluntary assistance from Sponsor.
2A	List all resource concerns which are relevant to the area of the proposed action and alternatives. Refer to National Bulletin 450-5-8 TCH-COMPLETING AND FILING MEASUREMENT UNITS FOR RESOURCE CONCERNS IN THE FIELD OFFICE TECHNICAL GUIDE (FOTG). Note: the affected area may extend beyond the construction foot print (ex. where water quality or water rights are affected downstream of the site).	
2B	Provide a brief description of the present condition of each resource concern listed in 2A. Quantify conditions where possible. Reference accompanying photo documentation.	
2C	2C Briefly summarize the practice/system of practices being proposed, as well as the "no action" alternative, and any other alternatives being considered. The "no action" alternative is the predicted future condition if no action is taken.	
2D	Document the efforts of the proposed action and alternatives for the considerations listed in 2A. Reference applicable quality criteria, information in the CPPE, and quantify effects whenever possible. Consider both long-term and short-term effects. Consider any effects which may be individually minor but cumulatively significant at a larger scale or over an extended time period. Clearly define the differences between proposed action, no action, and the other alternatives.	

2E	Enter Special Environmental Concerns for Clean Water Act Waters of the U.S., Coastal Zone Management Areas, Coral Reefs, Cultural Resources, Endangered and Threatened Species, Environmental Justice, Essential Fish Habitat, Fish and Wildlife Coordination, Floodplain Management, Invasive Species, Migratory Birds, Natural Areas, Prime and Unique Farmlands, Riparian Areas, Scenic Beauty, Wetlands, and Wild and Scenic Rivers for each alternative considered. In the case where the selected alternative from Section 5A impacts a Special Environmental Concern, additional information, coordination, permitting or mitigation may be required and adequate documentation should be prepared and attached to the DSR to identify how NRCS or the Sponsor addressed the concern.	
2F	Identify Property Protected both private and public, business losses and other economic impacts considered for each alternative. Enter the dollar value of the potential future damages if no action is taken in the Future Damage (5) column. This would be the estimate of the value lost if the EWP recovery measure is not installed. Use the repair cost or damage dollar method to determine the estimate of future damages. The repair cost method uses the costs to return the impaired property, good, or services based on their original pre-event condition or value. The damage dollar method uses an estimate of the future damage to value (e.g. if the structure is condemned, then enter the value of the structure). Enter the estimated amount based upon existing information or information furnished by the sponsor, contractors or others with specific knowledge for recovery from natural disasters for each alternative considered. Often market values for properties or services can be obtained from personnel at the local county/parish tax assessment office. The DSI team needs to determine the Damage Factor (%) which is a coefficient reduction to a property that is attributed to the effect of the proposed EWP recovery measures. Use an appropriate estimate of how much of the damage the EWP recovery measure will avoid for the alternative being considered. If the recovery measures from a single site will prevent 100 percent of the damage use 100 percent. The Near Term Damage Reduction is the Future Damage (\$) times the Damage Factor (%). Sum the Near Term Damage Reduction values to calculate the Total Near Term Damage Reduction. Enter the Net Benefit which is computed by subtracting the Cost from section 3 from the total near term damage reduction. The economic section must be completed for each alternative considered. Attach additional sheets as necessary.	
2G	Enter information to describe the potential social impacts and considerations for each alternative. Answer Yes or No and any remarks necessary to adequately address each question. The information may be obtained through interviews with community leaders, government officials or sponsors. Factors such as road closures, loss of water, electricity, access to emergency services are used when answering whether the community as a whole has been impaired. This information is part of the environmental evaluation portion of the DSR but may be pertinent in Section 4 regarding priorities. The Social Considerations Section must be completed for each alternative considered. Attach additional sheets as necessary.	
2H	Enter the Group Representation Information for the preferred alternative. Use the most recent census tract information based upon where the EWP recovery measures are located.	Sponsor completes

2I	Enter whether easement, permissions, or permits, and mitigation will require consultation or coordination for the selected alternative (e.g., Clean Water Act section 404 permit, Endangered Species Act section 10 permits, and any State or county permits or requirements). Describe mitigation to be applied that will offset any adverse impacts and attach any documentation from other agencies regarding mitigation requirements.	NRCS completes with voluntary assistance from Sponsor.
-----------	---	--

	Explanation of Requested Item	Who Completes
Section 3	Enter Proposed Recovery Measure(s) including Quantity, Units, Unit Cost, and Total Amount Cost. Enter sum of all Proposed Recovery Measure Costs to calculate Total Costs. Enter Total Installation Costs in Section 1F. The Engineering Cost Estimate must be completed for each alternative considered. Attach additional sheets as necessary.	NRCS completes with voluntary assistance from Sponsor.

	Explanation of Requested Item	Who Completes
Section 4	This section is used to determine the Funding Priority for the preferred alternative and sequence for initiating recovery measures. Enter Yes/No for questions 1 through 4 and enter the number (exigency 1, serious threat to human life 2, etc.) in the right column, Ranking Number Plus Modifier. Complete the Modifier portion by placing the alphabetic indicator a. through f. in the Modifier column. Complete the Ranking Number Plus Modifier column by entering the alphabetic indicator(s) that exists within the site. The number of the site designates the priority (e.g., a site with a designation of 2 is a higher priority than a site with a designation of 3). The modifiers increase the priority for the same numeric site (e.g., a site with a designation of 1a, would be a higher priority than a site with a designation of 1, a site with a designation of 2bc would be a higher priority than a site designated as 2b). Enter the Funding Priority in Section 1A.	NRCS completes with voluntary assistance from Sponsor.

	Explanation of Requested Item	Who Completes
Section 5	Enter the Findings, Rationale Supporting Findings, NRCS Representative signature and Comments, and Concurrence signature by the Sponsor(s).	NRCS completes.
5A	Indicate the preferred alternative and check the applicable finding being made. The NRCS Representative signs indicating the Finding selected. If the proposed action was adequately addressed in the PEIS, check all appropriate chapter paragraphs.	
5B	Enter any additional Comments.	
5C	Sponsor(s) review and concurrence. Sponsor(s) signature.	

	Explanation of Requested Item	Who Completes
Section 6	Include attachments for location map, site sketch or plan and other information as needed.	NRCS completes with voluntary assistance from Sponsor.

APPENDIX C

Sample DSRs and Help Sheets

DSR Sample #1



Figure 1 Sample 1 DSR picture

**DAMAGE SURVEY REPORT (DSR)
 Emergency Watershed Protection Program - Recovery**

Section 1A

Date of Report: _____

DSR Number: FY-FIP-SP-SI Project Number: _____ Site #s _____

NRCS Entry Only	
Eligible:	<input type="checkbox"/> YES <input type="checkbox"/> NO
Approved:	<input type="checkbox"/> YES <input type="checkbox"/> NO
Funding Priority Number (from Section 4):	3e
Limited Resource Area:	<input type="checkbox"/> YES <input type="checkbox"/> NO

Section 1B Sponsor Information

Sponsor Name: _____ Contact: _____

Address: _____

City/State/ZIP: _____ / _____ / _____

Telephone Number: _____ Fax: _____

Section 1C Site Location Information

County: _____ State: _____ Congressional District: _____

Latitude: _____ Longitude: _____ Section: _____ Township: _____ Range: _____

UTM Coordinates: _____ E _____ N Zone: _____ Units: _____

Drainage Name: _____ Reach: _____

Damage Description: Streambank erosion threatens bridge on Upper Boulder Road.

Section 1D Site Evaluation

All answers in this section must be YES in order to be eligible for EWP Assistance.

Site Eligibility	YES	NO	Remarks
Damage was a result of a natural disaster?*	<input checked="" type="checkbox"/>	<input type="checkbox"/>	
Recovery measures would be for runoff retardation or soil erosion prevention?*	<input checked="" type="checkbox"/>	<input type="checkbox"/>	
Threat to life and/or property?*	<input checked="" type="checkbox"/>	<input type="checkbox"/>	
Event caused a sudden impairment in the watershed?*	<input checked="" type="checkbox"/>	<input type="checkbox"/>	
Imminent threat was created by this event?***	<input checked="" type="checkbox"/>	<input type="checkbox"/>	
For structural repairs, not repaired twice within ten years?***	<input checked="" type="checkbox"/>	<input type="checkbox"/>	
Site Defensibility			
Economic, environmental and social documentation adequate to warrant action? (Go to pages 3, 4, 5 and 6 ***)	<input checked="" type="checkbox"/>	<input type="checkbox"/>	
Proposed action technically viable? (Go to page 9 ***)	<input checked="" type="checkbox"/>	<input type="checkbox"/>	

Have all the appropriate steps been taken to ensure that all segments of the affected population have been informed of the EWP program and its possible effects? YES NO

Comments: Upper Boulder Road is not a Federal-aid Highway

* Statutory

** Regulation

*** DSR Pages 3 through 5 are required to support the decisions recorded on this summary page. If additional space is needed on this or any other page in this form, add appropriate pages.

DSR Number: FY-FIP-SP-SI

Section 1E Proposed Action

Describe the preferred alternative from Findings, Section 5A:

Bank stabilization using riprap, upstream of bridge on east bank

Total installation cost identified in this DSR, Section 3: \$ 1,910.00

Section 1F NRCS State Office Review and Approval

Reviewed By: _____ Date Reviewed: _____
State EWP Program Manager

Approved By: _____ Date Approved: _____
State Conservationist

PRIVACY ACT AND PUBLIC BURDEN STATEMENT

NOTE: The following statement is made in accordance with the Privacy Act of 1974, (5 U.S.C. 552a) and the Paperwork Reduction Act of 1995, as amended. The authority for requesting the following information is 7 CFR 624 (EWP) and Section 216 of the Flood Control Act of 1950, Public Law 81-516, 33 U.S.C. 701b-1; and Section 403 of the Agricultural Credit Act of 1978, Public Law 95334, as amended by Section 382, of the Federal Agriculture Improvement and Reform Act of 1996, Public Law 104-127, 16 U.S.C. 2203. EWP, through local sponsors, provides emergency measures for runoff retardation and erosion control to areas where a sudden impairment of a watershed threatens life or property. The Secretary of Agriculture has delegated the administration of EWP to the Chief or NRCS on state, tribal and private lands. Signing this form indicates the sponsor concurs and agrees to provide the regional cost-share to implement the EWP recovery measure(s) determined eligible by NRCS under the terms and conditions of the program authority. Failure to provide a signature will result in the applicant being unable to apply for or receive a grant the applicable program authorities. Once signed by the sponsor, this information may not be provided to other agencies, IRS, Department of Justice, or other State or Federal Law Enforcement agencies, and in response to a court or administrative tribunal. The provisions of criminal and civil fraud statutes, including 18 U.S.C. 286, 287, 371, 641, 651, 1001; 15 U.S.C. 714m; and 31 U.S.C. 3729 may also be applicable to the information provided. According to the Paperwork Reduction Act of 1995, an agency may not conduct or sponsor, and a person is not required to respond to a collection of information unless it displays a valid OMB control number. The valid OMB control number for this information collection is 0578-0030. The time required to complete this information collection is estimated to average 117/1.96 minutes/hours per response, including the time for reviewing instructions, searching existing data sources, field reviews, gathering, designing, and maintaining the data needed, and completing and reviewing the collection information.

USDA NONDISCRIMINATION STATEMENT

"The U.S. Department of Agriculture (USDA) prohibits discrimination in all its programs and activities on the basis of race, color, national origin, age, disability, and where applicable, sex, marital status, familial status, parental status, religion, sexual orientation, genetic information, political beliefs, reprisal, or because all or part of an individual's income is derived from any public assistance program. (Not all prohibited bases apply to all programs.) Persons with disabilities who require alternative means for communication of program information (Braille, large print, audiotape, etc.) should contact USDA's TARGET Center at (202)720-2600 (voice and TDD). To file a complaint of discrimination, write to USDA, Director, Office of Civil Rights, 1400 Independence Avenue, SW., Washington, DC 20250-9410, or call (800)795-3272 (voice) or (202) 720-6382 (TDD). USDA is an equal opportunity provider and employer.

Civil Rights Statement of Assurance

The program or activities conducted under this agreement will be in compliance with the nondiscrimination provisions contained in the Titles VI and VII of the Civil Rights Act of 1964, as amended; the Civil Rights Restoration Act of 1987 (Public Law 100-259); and other nondiscrimination statutes: namely, Section 504 of the Rehabilitation Act of 1973, Title IX of the Amendments of 1972, the Age Discrimination Act of 1975, and the Americans with Disabilities Act of 1990. They will also be in accordance with regulations of the Secretary of Agriculture (7 CFR 15, 15a, and 15b), which provide that no person in the United States shall on the grounds of race, color, national origin, gender, religion, age or disability, be excluded from participation in, be denied the benefits of, or otherwise subjected to discrimination under any program or activity receiving Federal financial assistance from the U.S. Department of Agriculture or any agency thereof.

Section 2 Environmental Evaluation

2A Resource Concerns	2B Existing Condition	2C Alternative Designation		
		Proposed Action	No Action	Alternative
		Bank stabilization using riprap, upstream of bridge on east bank	Erosion will continue further undercutting bridge pier	None
2D Effects of Alternatives				
Soil				
EROSION, Classic Gully	Outflow from road ditch is headcutting and widening	Surface water will flow over riprap and gully will stabilize	Gully will continue to cut back and widen	
EROSION, Streambank	Unprotected streambank erodes and slough into stream	Riprap will protect streambank from erosion	Streambank will continue to erode and slough into stream	
CONDITION, Damage from Soil Deposition	Damage to floodplain from soil deposition	Reduce streambank sediments from movement	Continued soil deposition on floodplain	
Water				
QUALITY, Sediment and Turbidity in Surface Water	flooding of open areas/forest/roads	None	flooding of open areas/forest/roads diminish usefulness of each	
Harmful levels of chemicals in surface water	pesticides and fertilizers picked up by flood water	action helps prevent erosive flooding nutrient suspension	pesticides and fertilizers picked up by eroding flood water	
Air				
particulate matter <PM 10	None being released	Equipment and exhaust will increase S/T only during construction	None	
Plant				
Plant Condition-Noxious and Invasive Plants	Bank allows germination of noxious and invasive species	Banks will stabilize and native grass will grow again	Bare soil allows germination of noxious and invasive species	
Animal				
Fish and Wildlife-Plant Community Fragmentation	Mix of bare soil, native and invasive species	Establish stable, native habitat for wildlife	Mix of bare soil, native and invasive species	
Other				

Section 2E Special Environmental Concerns

Resource Consideration	Existing Condition	Alternatives and Effects		
		Proposed Action	No Action	Alternative
Clean Water Act Waters of the U.S.	No Effect	Project will not discharge fill material or other pollutants into waters of the U.S.	No Effect	
Coastal Zone Management Areas	N/A	N/A	N/A	
Coral Reefs	N/A	N/A	N/A	
Cultural Resources	Reviewed Cultural Inventory Map and in-field inspection. No known impacts.	No Impact	No Impact	
Endangered and Threatened Species	No species present.	No Impact	No Impact	
Environmental Justice	No adverse impact	No Impact	No Impact	
Essential Fish Habitat	Used FOTG for guidance. No essential fish habitat present.	No Impact	No Impact	
Fish and Wildlife Coordination	Stream channel not being modified-no impacts	Restore level of flood protection and drainage to pre-storm conditions	Flood damages will occur with each heavy rainfall event	
Floodplain Management	Project boundary is within 100 year floodplain	Restore level of flood protection and drainage to pre-storm conditions	Flood damages will occur with each heavy rainfall.	
Invasive Species	Increased spread of seeds carried by water	No Impact	No Impact	
Migratory Birds	No migratory bird nest or eggs	No Impact	No Impact	
Natural Areas	No natural areas identified within project boundaries	N/A	N/A	
Prime and Unique Farmlands	None present	N/A	N/A	
Riparian Areas	N/A	N/A	N/A	
Scenic Beauty	N/A	N/A	N/A	
Wetlands	None present	N/A	N/A	
Wild and Scenic Rivers	N/A	N/A	N/A	

Completed By: _____

Date: _____

DSR Number: FY-FIP-SP-SI

Section 2F Economic

This Section must be completed for each alternative considered (attached additional sheets as necessary)

Proposed Action:	Future Damages (\$)	Damage Factor (%)	Near Term Damage Reduction
Properties Protected (Private)			
Bank stabilization using riprap, upstream of bridge on east bank			
Properties Protected (Public)			
Wooden Plank Bridge (28' by 40')	\$200,000.00	50%	\$100,000.00
Business Losses			
40 vpd, 3 mile detour, 55 cent/mile/day, 180 days	\$11,880.00	50%	\$5,940.00
Other			
Total Near Term Damage Reduction (\$)			\$105,940.00
Cost from Section 3			\$1,910.00
Net Benefit (Total Near Term Damage Reduction minus Cost from Section 3)			\$104,030.00

Completed By: _____ Date: _____

Notes:

DSR Number: FY-FIP-SP-SI

Section 2F Economic

This Section must be completed for each alternative considered (attached additional sheets as necessary)

Alternative:	None	Future Damages (\$)	Damage Factor (%)	Near Term Damage Reduction
Properties Protected (Private)				
Properties Protected (Public)				
Business Losses				
Other				
Total Near Term Damage Reduction				
Cost from Section 3				
Net Benefit (Total Near Term Damage Reduction minus Cost from Section 3)				

Completed By: _____ Date: _____

Notes:

DSR Number: FY-FIP-SP-SI

Section 2G Social Considerations

(attach additional sheets as necessary)

	YES	NO	Remarks
Has there been a loss of life as a result of the watershed impairment?	<input type="checkbox"/>	<input checked="" type="checkbox"/>	
Is there the potential for loss of life due to damages from the watershed impairment?	<input checked="" type="checkbox"/>	<input type="checkbox"/>	
Has access to a hospital or medical facility been impaired by the watershed impairment?	<input type="checkbox"/>	<input checked="" type="checkbox"/>	
Has the community as a whole been adversely impacted by the watershed impairment (life and property ceases to operate in the normal capacity)	<input type="checkbox"/>	<input checked="" type="checkbox"/>	
Is there a lack or has there been a reduction of public safety due to the watershed impairment?	<input type="checkbox"/>	<input checked="" type="checkbox"/>	

Completed By: _____

Date: _____

DSR Number: FY-FIP-SP-SI

Section 2H Group Representation and Disability Information

This section is completed only for the preferred alternative selected.

Group Representation	Number
American Indian / Alaska Native Female Hispanic	
American Indian / Alaska Native Female Non-Hispanic	
American Indian / Alaska Native Male Hispanic	
American Indian / Alaska Native Male Non-Hispanic	
Asian Female Hispanic	
Asian Female Non-Hispanic	
Asian Male Non-Hispanic	
Asian Male Hispanic	
Black or African American Female Hispanic	
Black or African American Female Non-Hispanic	
Black or African American Male Hispanic	
Black or African American Male Non-Hispanic	
Hawaiian Native / Pacific Islander Female Hispanic	
Hawaiian Native / Pacific Islander Female Non-Hispanic	
Hawaiian Native / Pacific Islander Male Hispanic	
Hawaiian Native / Pacific Islander Male Non-Hispanic	
White Female Hispanic	
White Female Non-Hispanic	20
White Male Hispanic	
White Male Non-Hispanic	20
Total Group	40

Census tract(s): IDOT xxx County Traffic Count Maps

Completed By: _____ Date: _____

Section 2I: Required consultation or coordination between lead agency and / or the RFO and another governmental unit including tribes

Easements, permissions or permits:

Work permits or easements may be needed to access private property.

Mitigation Description:

None

Agencies, persons and references consulted or to be consulted:

Section 4 NRCS EWP Funding Priority

Complete the following section to compute the funding priority for the recovery measures in this application (see instructions on page 10)

Priority Ranking Criteria	YES	NO		Ranking Number Plus Modifier
1. Is this an exigency situation?	<input type="checkbox"/>	<input checked="" type="checkbox"/>		3e
2. Is this site where there is serious, but not immediate threat to human life?	<input type="checkbox"/>	<input checked="" type="checkbox"/>		
3. Is this site where buildings, utilities or other important infrastructure components are threatened?	<input checked="" type="checkbox"/>	<input type="checkbox"/>		
4. Is this site a funding priority established by the NRCS Chief?	<input type="checkbox"/>	<input type="checkbox"/>		
The following are modifiers for the above criteria.			Modifier	
a. Will the proposed action or alternatives protect or conserve federally-listed threatened and endangered species or critical habitat?			<input type="checkbox"/> a	
b. Will the proposed action or alternatives protect or conserve cultural sites listed on the National Register or Historic Places?			<input type="checkbox"/> b	
c. Will the proposed action or alternatives protect or conserve prime or important farmland?			<input type="checkbox"/> c	
d. Will the proposed action or alternatives protect or conserve existing wetlands?			<input type="checkbox"/> d	
e. Will the proposed action or alternatives maintain or improve current water quality conditions?			<input checked="" type="checkbox"/> e	
f. Will the proposed action or alternatives protect or conserve unique habitat, including but not limited to, areas inhabited by State-listed species, fish and wildlife management area or State identified sensitive habitats?			<input type="checkbox"/> f	

Enter priority computation in Section 1A, NRCS Entry, Funding priority number

Remarks:

DSR Number: FY-FIP-SP-SI

Section 5A Findings

Finding: Indicate the preferred alternative from Section 2 (Enter to Section 1E):

Bank stabilization using riprap, upstream of bridge on east bank

I have considered the effects of the action and the alternatives on the Environmental, Economic, Social, the Special Environmental Concerns and the extraordinary circumstances (40 CFR 1508.27). I find for the reasons stated below, that the preferred alternative:

Has been sufficiently analyzed in the EWP PEIS (reference all that apply)

Chapter 5.2.2.2.2

Chapter _____

Chapter _____

Chapter _____

Chapter _____

May require the preparation of an environmental assessment or environmental impact statement.

The action will be referred to the NRCS State Office on this date: _____

NRCS representative of the DSR team:

Signature: _____

Name/Title _____

Date: _____

Section 5B Comments:

see attachment on page 11/14 for signatures.

Section 5B Sponsor Concurrence:

Sponsor Representative:

Signature: _____

Name/Title _____

Date: _____

Section 6 Attachments:

- A. Location Map
- B. Site Plan or Sketches
- C. Other: _____

DSR Sample #2

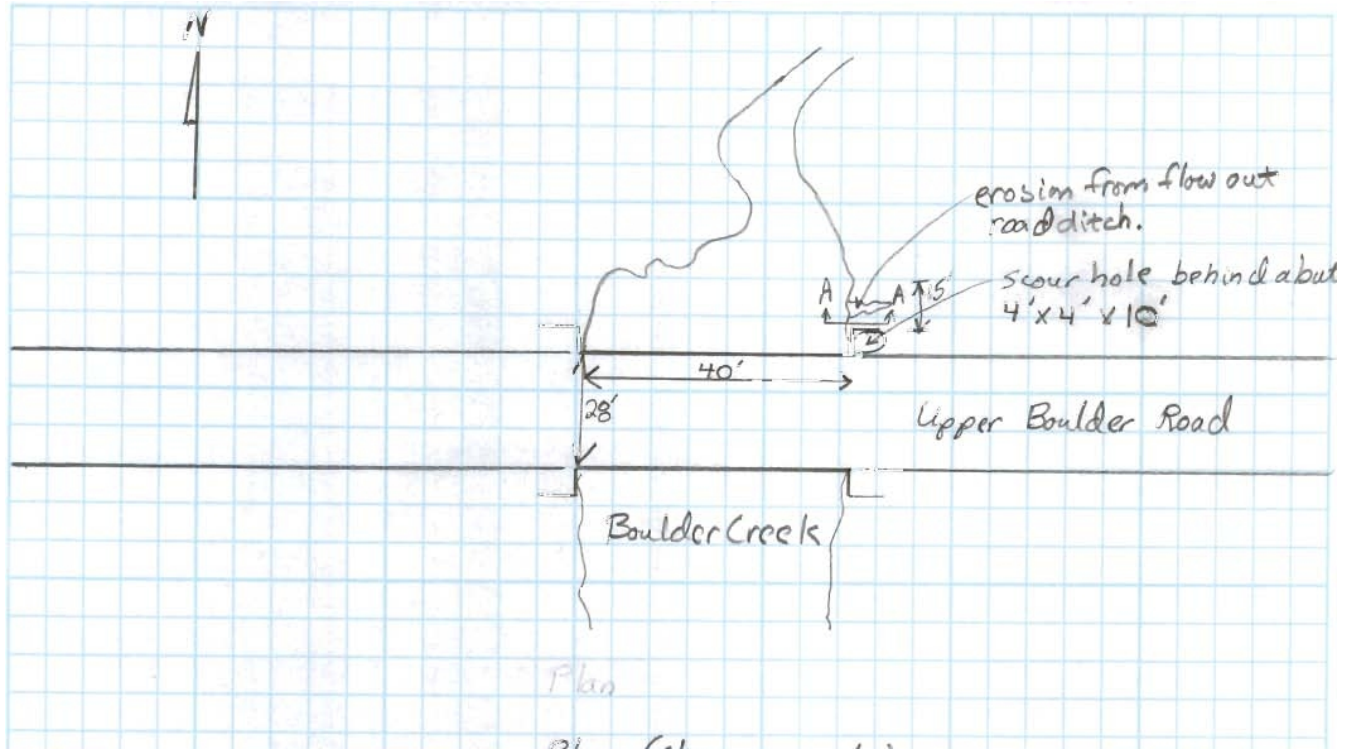


Figure 2 Sample 2 DSR sketch

**DAMAGE SURVEY REPORT (DSR)
 Emergency Watershed Protection Program - Recovery**

Section 1A

Date of Report: _____

DSR Number: FY-FIP-SP-SI Project Number: _____ Site #s _____

NRCS Entry Only	
Eligible:	<input type="checkbox"/> YES <input type="checkbox"/> NO
Approved:	<input type="checkbox"/> YES <input type="checkbox"/> NO
Funding Priority Number (from Section 4):	<u>3e</u>
Limited Resource Area:	<input type="checkbox"/> YES <input type="checkbox"/> NO

Section 1B Sponsor Information

Sponsor Name: _____ Contact: _____

Address: _____

City/State/ZIP: _____ / _____ / _____

Telephone Number: _____ Fax: _____

Section 1C Site Location Information

County: _____ State: _____ Congressional District: _____

Latitude: _____ Longitude: _____ Section: _____ Township: _____ Range: _____

UTM Coordinates: _____ E _____ N Zone: _____ Units: _____

Drainage Name: _____ Reach: _____

Damage Description: Streambank erosion threatens bridge on Upper Boulder Road.

Section 1D Site Evaluation

All answers in this section must be YES in order to be eligible for EWP Assistance.

Site Eligibility	YES	NO	Remarks
Damage was a result of a natural disaster?*	<input checked="" type="checkbox"/>	<input type="checkbox"/>	
Recovery measures would be for runoff retardation or soil erosion prevention?*	<input checked="" type="checkbox"/>	<input type="checkbox"/>	
Threat to life and/or property?*	<input checked="" type="checkbox"/>	<input type="checkbox"/>	
Event caused a sudden impairment in the watershed?*	<input checked="" type="checkbox"/>	<input type="checkbox"/>	
Imminent threat was created by this event?***	<input checked="" type="checkbox"/>	<input type="checkbox"/>	
For structural repairs, not repaired twice within ten years?***	<input checked="" type="checkbox"/>	<input type="checkbox"/>	
Site Defensibility			
Economic, environmental and social documentation adequate to warrant action? (Go to pages 3, 4, 5 and 6 ***)	<input checked="" type="checkbox"/>	<input type="checkbox"/>	
Proposed action technically viable? (Go to page 9 ***)	<input checked="" type="checkbox"/>	<input type="checkbox"/>	

Have all the appropriate steps been taken to ensure that all segments of the affected population have been informed of the EWP program and its possible effects? YES NO

Comments: Upper Boulder Road is not a Federal-aid Highway

* Statutory

** Regulation

*** DSR Pages 3 through 5 are required to support the decisions recorded on this summary page. If additional space is needed on this or any other page in this form, add appropriate pages.

DSR Number: FY-FIP-SP-SI

Section 1E Proposed Action

Describe the preferred alternative from Findings, Section 5A:

Bank stabilization using riprap, upstream of bridge on east bank

Total installation cost identified in this DSR, Section 3: \$ 1,910.00

Section 1F NRCS State Office Review and Approval

Reviewed By: _____ Date Reviewed: _____
State EWP Program Manager

Approved By: _____ Date Approved: _____
State Conservationist

PRIVACY ACT AND PUBLIC BURDEN STATEMENT

NOTE: The following statement is made in accordance with the Privacy Act of 1974, (5 U.S.C. 552a) and the Paperwork Reduction Act of 1995, as amended. The authority for requesting the following information is 7 CFR 624 (EWP) and Section 216 of the Flood Control Act of 1950, Public Law 81-516, 33 U.S.C. 701b-1; and Section 403 of the Agricultural Credit Act of 1978, Public Law 95334, as amended by Section 382, of the Federal Agriculture Improvement and Reform Act of 1996, Public Law 104-127, 16 U.S.C. 2203. EWP, through local sponsors, provides emergency measures for runoff retardation and erosion control to areas where a sudden impairment of a watershed threatens life or property. The Secretary of Agriculture has delegated the administration of EWP to the Chief or NRCS on state, tribal and private lands. Signing this form indicates the sponsor concurs and agrees to provide the regional cost-share to implement the EWP recovery measure(s) determined eligible by NRCS under the terms and conditions of the program authority. Failure to provide a signature will result in the applicant being unable to apply for or receive a grant the applicable program authorities. Once signed by the sponsor, this information may not be provided to other agencies, IRS, Department of Justice, or other State or Federal Law Enforcement agencies, and in response to a court or administrative tribunal. The provisions of criminal and civil fraud statutes, including 18 U.S.C. 286, 287, 371, 641, 651, 1001; 15 U.S.C. 714m; and 31 U.S.C. 3729 may also be applicable to the information provided. According to the Paperwork Reduction Act of 1995, an agency may not conduct or sponsor, and a person is not required to respond to a collection of information unless it displays a valid OMB control number. The valid OMB control number for this information collection is 0578-0030. The time required to complete this information collection is estimated to average 117/1.96 minutes/hours per response, including the time for reviewing instructions, searching existing data sources, field reviews, gathering, designing, and maintaining the data needed, and completing and reviewing the collection information.

USDA NONDISCRIMINATION STATEMENT

"The U.S. Department of Agriculture (USDA) prohibits discrimination in all its programs and activities on the basis of race, color, national origin, age, disability, and where applicable, sex, marital status, familial status, parental status, religion, sexual orientation, genetic information, political beliefs, reprisal, or because all or part of an individual's income is derived from any public assistance program. (Not all prohibited bases apply to all programs.) Persons with disabilities who require alternative means for communication of program information (Braille, large print, audiotape, etc.) should contact USDA's TARGET Center at (202)720-2600 (voice and TDD). To file a complaint of discrimination, write to USDA, Director, Office of Civil Rights, 1400 Independence Avenue, SW., Washington, DC 20250-9410, or call (800)795-3272 (voice) or (202) 720-6382 (TDD). USDA is an equal opportunity provider and employer.

Civil Rights Statement of Assurance

The program or activities conducted under this agreement will be in compliance with the nondiscrimination provisions contained in the Titles VI and VII of the Civil Rights Act of 1964, as amended; the Civil Rights Restoration Act of 1987 (Public Law 100-259); and other nondiscrimination statutes: namely, Section 504 of the Rehabilitation Act of 1973, Title IX of the Amendments of 1972, the Age Discrimination Act of 1975, and the Americans with Disabilities Act of 1990. They will also be in accordance with regulations of the Secretary of Agriculture (7 CFR 15, 15a, and 15b), which provide that no person in the United States shall on the grounds of race, color, national origin, gender, religion, age or disability, be excluded from participation in, be denied the benefits of, or otherwise subjected to discrimination under any program or activity receiving Federal financial assistance from the U.S. Department of Agriculture or any agency thereof.

Section 2 Environmental Evaluation

2A Resource Concerns	2B Existing Condition	2C Alternative Designation		
		Proposed Action	No Action	Alternative
		Bank stabilization using riprap, upstream of bridge on east bank	Erosion will continue further undercutting bridge pier	None
2D Effects of Alternatives				
Soil				
EROSION, Classic Gully	Outflow from road ditch is headcutting and widening	Surface water will flow over riprap and gully will stabilize	Gully will continue to cut back and widen	
EROSION, Streambank	Unprotected streambank erodes and slough into stream	Riprap will protect streambank from erosion	Streambank will continue to erode and slough into stream	
CONDITION, Damage from Soil Deposition	Damage to floodplain from soil deposition	Reduce streambank sediments from movement	Continued soil deposition on floodplain	
Water				
QUALITY, Sediment and Turbidity in Surface Water	flooding of open areas/forest/roads	None	flooding of open areas/forest/roads diminish usefulness of each	
Harmful levels of chemicals in surface water	pesticides and fertilizers picked up by flood water	action helps prevent erosive flooding nutrient suspension	pesticides and fertilizers picked up by eroding flood water	
Air				
particulate matter <PM 10	None being released	Equipment and exhaust will increase S/T only during construction	None	
Plant				
Plant Condition-Noxious and Invasive Plants	Bank allows germination of noxious and invasive species	Banks will stabilize and native grass will grow again	Bare soil allows germination of noxious and invasive species	
Animal				
Fish and Wildlife-Plant Community Fragmentation	Mix of bare soil, native and invasive species	Establish stable, native habitat for wildlife	Mix of bare soil, native and invasive species	
Other				

Section 2E Special Environmental Concerns

Resource Consideration	Existing Condition	Alternatives and Effects		
		Proposed Action	No Action	Alternative
Clean Water Act Waters of the U.S.	No Effect	Project will not discharge fill material or other pollutants into waters of the U.S.	No Effect	
Coastal Zone Management Areas	N/A	N/A	N/A	
Coral Reefs	N/A	N/A	N/A	
Cultural Resources	Reviewed Cultural Inventory Map and in-field inspection. No known impacts.	No Impact	No Impact	
Endangered and Threatened Species	No species present.	No Impact	No Impact	
Environmental Justice	No adverse impact	No Impact	No Impact	
Essential Fish Habitat	Used FOTG for guidance. No essential fish habitat present.	No Impact	No Impact	
Fish and Wildlife Coordination	Stream channel not being modified-no impacts	Restore level of flood protection and drainage to pre-storm conditions	Flood damages will occur with each heavy rainfall event	
Floodplain Management	Project boundary is within 100 year floodplain	Restore level of flood protection and drainage to pre-storm conditions	Flood damages will occur with each heavy rainfall.	
Invasive Species	Increased spread of seeds carried by water	No Impact	No Impact	
Migratory Birds	No migratory bird nest or eggs	No Impact	No Impact	
Natural Areas	No natural areas identified within project boundaries	N/A	N/A	
Prime and Unique Farmlands	None present	N/A	N/A	
Riparian Areas	N/A	N/A	N/A	
Scenic Beauty	N/A	N/A	N/A	
Wetlands	None present	N/A	N/A	
Wild and Scenic Rivers	N/A	N/A	N/A	

Completed By: _____

Date: _____

DSR Number: FY-FIP-SP-SI

Section 2F Economic

This Section must be completed for each alternative considered (attached additional sheets as necessary)

Proposed Action:	Future Damages (\$)	Damage Factor (%)	Near Term Damage Reduction
Properties Protected (Private)			
Bank stabilization using riprap, upstream of bridge on east bank			
Properties Protected (Public)			
Wooden Plank Bridge (28' by 40')	\$200,000.00	50%	\$100,000.00
Business Losses			
40 vpd, 3 mile detour, 55 cent/mile/day, 180 days	\$11,880.00	50%	\$5,940.00
Other			
Total Near Term Damage Reduction (\$)			\$105,940.00
Cost from Section 3			\$1,910.00
Net Benefit (Total Near Term Damage Reduction minus Cost from Section 3)			\$104,030.00

Completed By: _____ Date: _____

Notes:

DSR Number: FY-FIP-SP-SI

Section 2F Economic

This Section must be completed for each alternative considered (attached additional sheets as necessary)

Alternative:	None	Future Damages (\$)	Damage Factor (%)	Near Term Damage Reduction
Properties Protected (Private)				
Properties Protected (Public)				
Business Losses				
Other				
Total Near Term Damage Reduction				
Cost from Section 3				
Net Benefit (Total Near Term Damage Reduction minus Cost from Section 3)				

Completed By: _____ Date: _____

Notes:

DSR Number: FY-FIP-SP-SI

Section 2G Social Considerations

(attach additional sheets as necessary)

	YES	NO	Remarks
Has there been a loss of life as a result of the watershed impairment?	<input type="checkbox"/>	<input checked="" type="checkbox"/>	
Is there the potential for loss of life due to damages from the watershed impairment?	<input checked="" type="checkbox"/>	<input type="checkbox"/>	
Has access to a hospital or medical facility been impaired by the watershed impairment?	<input type="checkbox"/>	<input checked="" type="checkbox"/>	
Has the community as a whole been adversely impacted by the watershed impairment (life and property ceases to operate in the normal capacity)	<input type="checkbox"/>	<input checked="" type="checkbox"/>	
Is there a lack or has there been a reduction of public safety due to the watershed impairment?	<input type="checkbox"/>	<input checked="" type="checkbox"/>	

Completed By: _____

Date: _____

DSR Number: FY-FIP-SP-SI

Section 2H Group Representation and Disability Information

This section is completed only for the preferred alternative selected.

Group Representation	Number
American Indian / Alaska Native Female Hispanic	
American Indian / Alaska Native Female Non-Hispanic	
American Indian / Alaska Native Male Hispanic	
American Indian / Alaska Native Male Non-Hispanic	
Asian Female Hispanic	
Asian Female Non-Hispanic	
Asian Male Non-Hispanic	
Asian Male Hispanic	
Black or African American Female Hispanic	
Black or African American Female Non-Hispanic	
Black or African American Male Hispanic	
Black or African American Male Non-Hispanic	
Hawaiian Native / Pacific Islander Female Hispanic	
Hawaiian Native / Pacific Islander Female Non-Hispanic	
Hawaiian Native / Pacific Islander Male Hispanic	
Hawaiian Native / Pacific Islander Male Non-Hispanic	
White Female Hispanic	
White Female Non-Hispanic	20
White Male Hispanic	
White Male Non-Hispanic	20
Total Group	40

Census tract(s): IDOT xxx County Traffic Count Maps

Completed By: _____ Date: _____

Section 2I: Required consultation or coordination between lead agency and / or the RFO and another governmental unit including tribes

Easements, permissions or permits:

Work permits or easements may be needed to access private property.

Mitigation Description:

None

Agencies, persons and references consulted or to be consulted:

Section 4 NRCS EWP Funding Priority

Complete the following section to compute the funding priority for the recovery measures in this application (see instructions on page 10)

Priority Ranking Criteria	YES	NO		Ranking Number Plus Modifier
1. Is this an exigency situation?	<input type="checkbox"/>	<input checked="" type="checkbox"/>		3e
2. Is this site where there is serious, but not immediate threat to human life?	<input type="checkbox"/>	<input checked="" type="checkbox"/>		
3. Is this site where buildings, utilities or other important infrastructure components are threatened?	<input checked="" type="checkbox"/>	<input type="checkbox"/>		
4. Is this site a funding priority established by the NRCS Chief?	<input type="checkbox"/>	<input type="checkbox"/>		
The following are modifiers for the above criteria.			Modifier	
a. Will the proposed action or alternatives protect or conserve federally-listed threatened and endangered species or critical habitat?			<input type="checkbox"/> a	
b. Will the proposed action or alternatives protect or conserve cultural sites listed on the National Register or Historic Places?			<input type="checkbox"/> b	
c. Will the proposed action or alternatives protect or conserve prime or important farmland?			<input type="checkbox"/> c	
d. Will the proposed action or alternatives protect or conserve existing wetlands?			<input type="checkbox"/> d	
e. Will the proposed action or alternatives maintain or improve current water quality conditions?			<input checked="" type="checkbox"/> e	
f. Will the proposed action or alternatives protect or conserve unique habitat, including but not limited to, areas inhabited by State-listed species, fish and wildlife management area or State identified sensitive habitats?			<input type="checkbox"/> f	

Enter priority computation in Section 1A, NRCS Entry, Funding priority number

Remarks:

Section 5A Findings

Finding: Indicate the preferred alternative from Section 2 (Enter to Section 1E):

Bank stabilization using riprap, upstream of bridge on east bank

I have considered the effects of the action and the alternatives on the Environmental, Economic, Social, the Special Environmental Concerns and the extraordinary circumstances (40 CFR 1508.27). I find for the reasons stated below, that the preferred alternative:

Has been sufficiently analyzed in the EWP PEIS (reference all that apply)

Chapter 5.2.2.2.2

Chapter _____

Chapter _____

Chapter _____

Chapter _____

May require the preparation of an environmental assessment or environmental impact statement.

The action will be referred to the NRCS State Office on this date: _____

NRCS representative of the DSR team:

Signature: _____

Name/Title _____

Date: _____

Section 5B Comments:

see attachment on page 11/14 for signatures.

Section 5B Sponsor Concurrence:

Sponsor Representative:

Signature: _____

Name/Title _____

Date: _____

Section 6 Attachments:

- A. Location Map
- B. Site Plan or Sketches
- C. Other: _____

DSR Sample #3

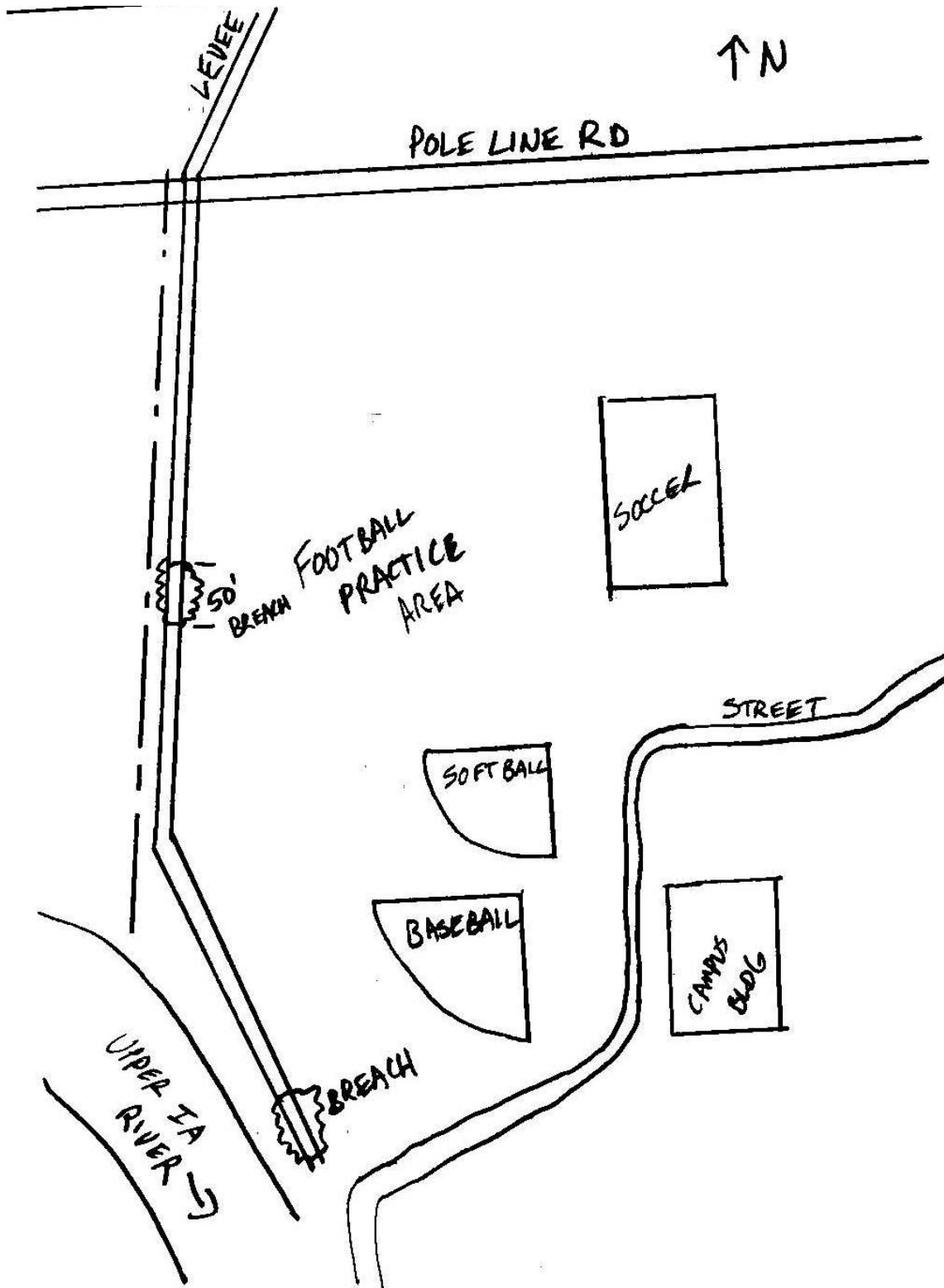


Figure 3 Sample 3 DSR sketch

**DAMAGE SURVEY REPORT (DSR)
 Emergency Watershed Protection Program - Recovery**

Section 1A

Date of Report: _____

DSR Number: FY-FIP SP SI Project Number: _____

NRCS Entry Only	
Eligible:	<input type="checkbox"/> YES <input type="checkbox"/> NO
Approved:	<input type="checkbox"/> YES <input type="checkbox"/> NO
Funding Priority Number (from Section 4):	<u>3e</u>
Limited Resource Area:	<input type="checkbox"/> YES <input type="checkbox"/> NO

Section 1B Sponsor Information

Sponsor Name: _____ Contact: _____

Address: _____

City/State/ZIP: _____ / _____ / _____

Telephone Number: _____ Fax: _____

Section 1C Site Location Information

County: _____ State: _____ Congressional District: _____

Latitude: _____ Longitude: _____ Section: _____ Township: _____ Range: _____

UTM Coordinates: _____ E _____ N Zone: _____ Units: _____

Drainage Name: _____ Reach: _____

Damage Description: Levee breach is allowing flood waters to inundate Luther College Campus

Section 1D Site Evaluation

All answers in this section must be YES in order to be eligible for EWP Assistance.

Site Eligibility	YES	NO	Remarks
Damage was a result of a natural disaster?*	<input checked="" type="checkbox"/>	<input type="checkbox"/>	
Recovery measures would be for runoff retardation or soil erosion prevention?*	<input checked="" type="checkbox"/>	<input type="checkbox"/>	
Threat to life and/or property?*	<input checked="" type="checkbox"/>	<input type="checkbox"/>	
Event caused a sudden impairment in the watershed?*	<input checked="" type="checkbox"/>	<input type="checkbox"/>	
Imminent threat was created by this event?***	<input checked="" type="checkbox"/>	<input type="checkbox"/>	
For structural repairs, not repaired twice within ten years?***	<input checked="" type="checkbox"/>	<input type="checkbox"/>	
Site Defensibility			
Economic, environmental and social documentation adequate to warrant action? (Go to pages 3, 4, 5 and 6 ***)	<input checked="" type="checkbox"/>	<input type="checkbox"/>	
Proposed action technically viable? (Go to page 9 ***)	<input checked="" type="checkbox"/>	<input type="checkbox"/>	

Have all the appropriate steps been taken to ensure that all segments of the affected population have been informed of the EWP program and its possible effects? YES NO

Comments: Rich Tenneson is the Luther College Contact person.

* Statutory

** Regulation

*** DSR Pages 3 through 5 are required to support the decisions recorded on this summary page. If additional space is needed on this or any other page in this form, add appropriate pages.

Section 1E Proposed Action

Describe the preferred alternative from Findings, Section 5A:

Repair levee back to pre-flood condition

Total installation cost identified in this DSR, Section 3: \$ 18,040.00

Section 1F NRCS State Office Review and Approval

Reviewed By: _____ Date Reviewed: _____
State EWP Program Manager

Approved By: _____ Date Approved: _____
State Conservationist

PRIVACY ACT AND PUBLIC BURDEN STATEMENT

NOTE: The following statement is made in accordance with the Privacy Act of 1974, (5 U.S.C. 552a) and the Paperwork Reduction Act of 1995, as amended. The authority for requesting the following information is 7 CFR 624 (EWP) and Section 216 of the Flood Control Act of 1950, Public Law 81-516, 33 U.S.C. 701b-1; and Section 403 of the Agricultural Credit Act of 1978, Public Law 95334, as amended by Section 382, of the Federal Agriculture Improvement and Reform Act of 1996, Public Law 104-127, 16 U.S.C. 2203. EWP, through local sponsors, provides emergency measures for runoff retardation and erosion control to areas where a sudden impairment of a watershed threatens life or property. The Secretary of Agriculture has delegated the administration of EWP to the Chief or NRCS on state, tribal and private lands. Signing this form indicates the sponsor concurs and agrees to provide the regional cost-share to implement the EWP recovery measure(s) determined eligible by NRCS under the terms and conditions of the program authority. Failure to provide a signature will result in the applicant being unable to apply for or receive a grant the applicable program authorities. Once signed by the sponsor, this information may not be provided to other agencies, IRS, Department of Justice, or other State or Federal Law Enforcement agencies, and in response to a court or administrative tribunal. The provisions of criminal and civil fraud statutes, including 18 U.S.C. 286, 287, 371, 641, 651, 1001; 15 U.S.C. 714m; and 31 U.S.C. 3729 may also be applicable to the information provided. According to the Paperwork Reduction Act of 1995, an agency may not conduct or sponsor, and a person is not required to respond to a collection of information unless it displays a valid OMB control number. The valid OMB control number for this information collection is 0578-0030. The time required to complete this information collection is estimated to average 117/1.96 minutes/hours per response, including the time for reviewing instructions, searching existing data sources, field reviews, gathering, designing, and maintaining the data needed, and completing and reviewing the collection information.

USDA NONDISCRIMINATION STATEMENT

"The U.S. Department of Agriculture (USDA) prohibits discrimination in all its programs and activities on the basis of race, color, national origin, age, disability, and where applicable, sex, marital status, familial status, parental status, religion, sexual orientation, genetic information, political beliefs, reprisal, or because all or part of an individual's income is derived from any public assistance program. (Not all prohibited bases apply to all programs.) Persons with disabilities who require alternative means for communication of program information (Braille, large print, audiotape, etc.) should contact USDA's TARGET Center at (202)720-2600 (voice and TDD). To file a complaint of discrimination, write to USDA, Director, Office of Civil Rights, 1400 Independence Avenue, SW., Washington, DC 20250-9410, or call (800)795-3272 (voice) or (202) 720-6382 (TDD). USDA is an equal opportunity provider and employer.

Civil Rights Statement of Assurance

The program or activities conducted under this agreement will be in compliance with the nondiscrimination provisions contained in the Titles VI and VII of the Civil Rights Act of 1964, as amended; the Civil Rights Restoration Act of 1987 (Public Law 100-259); and other nondiscrimination statutes: namely, Section 504 of the Rehabilitation Act of 1973, Title IX of the Amendments of 1972, the Age Discrimination Act of 1975, and the Americans with Disabilities Act of 1990. They will also be in accordance with regulations of the Secretary of Agriculture (7 CFR 15, 15a, and 15b), which provide that no person in the United States shall on the grounds of race, color, national origin, gender, religion, age or disability, be excluded from participation in, be denied the benefits of, or otherwise subjected to discrimination under any program or activity receiving Federal financial assistance from the U.S. Department of Agriculture or any agency thereof.

Section 2 Environmental Evaluation

2A Resource Concerns	2B Existing Condition	2C Alternative Designation		
		Proposed Action	No Action	Alternative
		Repair levee back to pre-flood condition		
2D Effects of Alternatives				
Soil				
Sedimentation	deposition will occur downstream	greatly reduced downstream deposition	deposition will occur downstream	
Soil Erosion - Streambank	Streambanks are rapidly sloughing and eroding	prevent future bank erosion in area of levee breach	Streambanks are rapidly sloughing and eroding	
Compaction	none	insignificant, during construction only	none	
Water				
Water Quantity - Flooding	Levee failure caused significant flood damage to Luther Campus	Flooding will be reduced	Flooding will continue to occur	
Water Quality - Excessive Sediment	sediment is delivered directly into stream in eroded area	sediment delivery is prevented and sediment is captured	sediment is delivered directly into stream in eroded area	
Harmful levels of chemicals in surface water	being spread over practice fields and campus	Pollutants will be confined to the stream	pollutants will continue to be spread over the practice fields and campus.	
Air				
particulate matter <PM 10	None being released	Equipment and exhaust will increase S/T only during construction	None	
Plant				
Grass on banks	banks are bare due to sloughing and erosion	banks will stabilize and grass will grow again	banks are bare due to sloughing and erosion	
Animal				
Wildlife	Limits survivability of wildlife unable to escape floods	Encourages native wildlife growth	Scouring floodwater will remove habitat	
Other				
Noise	No impact	Increase S/T during construction	No impact	

Section 2E Special Environmental Concerns

Resource Consideration	Existing Condition	Alternatives and Effects		
		Proposed Action	No Action	Alternative
Clean Water Act Waters of the U.S.	No Effect	Project will not discharge fill material or other pollutants into waters of the U.S.	No Effect	
Coastal Zone Management Areas	N/A	N/A	N/A	
Coral Reefs	N/A	N/A	N/A	
Cultural Resources	Reviewed Cultural Inventory Map and in-field inspection. No known impacts.	No Impact	No Impact	
Endangered and Threatened Species	No species present.	No Impact	No Impact	
Environmental Justice	Used Environmental Compliance Handbook for guidance. No adverse impact	No Impact	No Impact	
Essential Fish Habitat	Used FOTG for guidance. No essential fish habitat present.	weir will be constructed to allow passage of migrating fish	No Impact	
Fish and Wildlife Coordination	Used Environmental Compliance Handbook for guidance. Stream channel not being modified-no impacts	Restore level of flood protection and drainage to pre-storm conditions	Flood damages will occur with each heavy rainfall event	
Floodplain Management	Project boundary is within 100 year floodplain	Restore level of flood protection and drainage to pre-storm conditions	Flood damages will occur with each heavy rainfall.	
Invasive Species	Increased spread of seeds carried by water	No Impact	No Impact	
Migratory Birds	No migratory bird nest or eggs	No Impact	No Impact	
Natural Areas	No natural areas identified within project boundaries	N/A	N/A	
Prime and Unique Farmlands	N/A	N/A	N/A	
Riparian Areas	Flood waters inundate riparian area.	Flood waters will be contained by the levee	Flood waters will inundate riparian area	
Scenic Beauty	N/A	N/A	N/A	
Wetlands	N/A	N/A	N/A	
Wild and Scenic Rivers	N/A	N/A	N/A	

Completed By: _____

Date: _____

DSR Number: FY-FIP SP SI

Section 2F Economic

This Section must be completed for each alternative considered (attached additional sheets as necessary)

Alternative:	Future Damages (\$)	Damage Factor (%)	Near Term Damage Reduction
Properties Protected (Private)			
Properties Protected (Public)			
Business Losses			
Other			
Total Near Term Damage Reduction			
Cost from Section 3			
Net Benefit (Total Near Term Damage Reduction minus Cost from Section 3)			

Completed By: _____ Date: _____

Notes:

DSR Number: FY-FIP SP SI

Section 2G Social Considerations

(attach additional sheets as necessary)

	YES	NO	Remarks
Has there been a loss of life as a result of the watershed impairment?	<input type="checkbox"/>	<input checked="" type="checkbox"/>	
Is there the potential for loss of life due to damages from the watershed impairment?	<input type="checkbox"/>	<input checked="" type="checkbox"/>	
Has access to a hospital or medical facility been impaired by the watershed impairment?	<input type="checkbox"/>	<input checked="" type="checkbox"/>	
Has the community as a whole been adversely impacted by the watershed impairment (life and property ceases to operate in the normal capacity)	<input checked="" type="checkbox"/>	<input type="checkbox"/>	
Is there a lack or has there been a reduction of public safety due to the watershed impairment?	<input checked="" type="checkbox"/>	<input type="checkbox"/>	

Completed By: _____

Date: _____

Section 2H Group Representation and Disability Information

This section is completed only for the preferred alternative selected.

Group Representation	Number
American Indian / Alaska Native Female Hispanic	
American Indian / Alaska Native Female Non-Hispanic	
American Indian / Alaska Native Male Hispanic	
American Indian / Alaska Native Male Non-Hispanic	
Asian Female Hispanic	
Asian Female Non-Hispanic	71
Asian Male Non-Hispanic	70
Asian Male Hispanic	
Black or African American Female Hispanic	
Black or African American Female Non-Hispanic	11
Black or African American Male Hispanic	
Black or African American Male Non-Hispanic	12
Hawaiian Native / Pacific Islander Female Hispanic	
Hawaiian Native / Pacific Islander Female Non-Hispanic	3
Hawaiian Native / Pacific Islander Male Hispanic	3
Hawaiian Native / Pacific Islander Male Non-Hispanic	
White Female Hispanic	22
White Female Non-Hispanic	1130
White Male Hispanic	23
White Male Non-Hispanic	1131
Total Group	2476

Census tract(s): Luther College enrollment-2476 students

Completed By: _____ Date: _____

Section 2I: Required consultation or coordination between lead agency and / or the RFO and another governmental unit including tribes

Easements, permissions or permits:

Mitigation Description:

None

Agencies, persons and references consulted or to be consulted:

Section 4 NRCS EWP Funding Priority

Complete the following section to compute the funding priority for the recovery measures in this application (see instructions on page 10)

Priority Ranking Criteria	YES	NO		Ranking Number Plus Modifier
1. Is this an exigency situation?	<input type="checkbox"/>	<input checked="" type="checkbox"/>		3e
2. Is this site where there is serious, but not immediate threat to human life?	<input type="checkbox"/>	<input checked="" type="checkbox"/>		
3. Is this site where buildings, utilities or other important infrastructure components are threatened?	<input checked="" type="checkbox"/>	<input type="checkbox"/>		
4. Is this site a funding priority established by the NRCS Chief?	<input type="checkbox"/>	<input checked="" type="checkbox"/>		
The following are modifiers for the above criteria.			Modifier	
a. Will the proposed action or alternatives protect or conserve federally-listed threatened and endangered species or critical habitat?			<input type="checkbox"/> a	
b. Will the proposed action or alternatives protect or conserve cultural sites listed on the National Register or Historic Places?			<input type="checkbox"/> b	
c. Will the proposed action or alternatives protect or conserve prime or important farmland?			<input type="checkbox"/> c	
d. Will the proposed action or alternatives protect or conserve existing wetlands?			<input type="checkbox"/> d	
e. Will the proposed action or alternatives maintain or improve current water quality conditions?			<input checked="" type="checkbox"/> e	
f. Will the proposed action or alternatives protect or conserve unique habitat, including but not limited to, areas inhabited by State-listed species, fish and wildlife management area or State identified sensitive habitats?			<input type="checkbox"/> f	

Enter priority computation in Section 1A, NRCS Entry, Funding priority number

Remarks:

Section 5A Findings

Finding: Indicate the preferred alternative from Section 2 (Enter to Section 1E):

Repair levee back to preflood condition

I have considered the effects of the action and the alternatives on the Environmental, Economic, Social, the Special Environmental Concerns and the extraordinary circumstances (40 CFR 1508.27). I find for the reasons stated below, that the preferred alternative:

Has been sufficiently analyzed in the EWP PEIS (reference all that apply)

Chapter 5.2.2.3.2

Chapter _____

Chapter _____

Chapter _____

Chapter _____

May require the preparation of an environmental assessment or environmental impact statement.

The action will be referred to the NRCS State Office on this date: _____

NRCS representative of the DSR team:

Signature: _____

Name/Title _____

Date: _____

Section 5B Comments:

Section 5B Sponsor Concurrence:

Sponsor Representative:

Signature: _____

Name/Title _____

Date: _____

Section 6 Attachments:

A. Location Map

B. Site Plan or Sketches

C. Other: _____

DSR Sample #4



Figure 1 Sample 4 DSR photo

**DAMAGE SURVEY REPORT (DSR)
 Emergency Watershed Protection Program - Recovery**

Section 1A

Date of Report: _____

DSR Number: FY-FIP SP SI Project Number: _____

NRCS Entry Only	
Eligible:	<input type="checkbox"/> YES <input type="checkbox"/> NO
Approved:	<input type="checkbox"/> YES <input type="checkbox"/> NO
Funding Priority Number (from Section 4):	<u>3e</u>
Limited Resource Area:	<input type="checkbox"/> YES <input type="checkbox"/> NO

Section 1B Sponsor Information

Sponsor Name: _____ Contact: _____

Address: _____

City/State/ZIP: _____ / _____ / _____

Telephone Number: _____ Fax: _____

Section 1C Site Location Information

County: _____ State: _____ Congressional District: _____

Latitude: _____ Longitude: _____ Section: _____ Township: _____ Range: _____

UTM Coordinates: _____ E _____ N Zone: _____ Units: _____

Drainage Name: _____ Reach: _____

Damage Description: Rock Chute damaged at end of auxiliary spillway

Section 1D Site Evaluation

All answers in this section must be YES in order to be eligible for EWP Assistance.

Site Eligibility	YES	NO	Remarks
Damage was a result of a natural disaster?*	<input checked="" type="checkbox"/>	<input type="checkbox"/>	
Recovery measures would be for runoff retardation or soil erosion prevention?*	<input checked="" type="checkbox"/>	<input type="checkbox"/>	
Threat to life and/or property?*	<input checked="" type="checkbox"/>	<input type="checkbox"/>	
Event caused a sudden impairment in the watershed?*	<input checked="" type="checkbox"/>	<input type="checkbox"/>	
Imminent threat was created by this event?***	<input checked="" type="checkbox"/>	<input type="checkbox"/>	
For structural repairs, not repaired twice within ten years?***	<input checked="" type="checkbox"/>	<input type="checkbox"/>	
Site Defensibility			
Economic, environmental and social documentation adequate to warrant action? (Go to pages 3, 4, 5 and 6 ***)	<input checked="" type="checkbox"/>	<input type="checkbox"/>	
Proposed action technically viable? (Go to page 9 ***)	<input checked="" type="checkbox"/>	<input type="checkbox"/>	

Have all the appropriate steps been taken to ensure that all segments of the affected population have been informed of the EWP program and its possible effects? YES NO

Comments: Soap Creek 26-51B, Ray Lehn

* Statutory

** Regulation

*** DSR Pages 3 through 5 are required to support the decisions recorded on this summary page. If additional space is needed on this or any other page in this form, add appropriate pages.

Section 1E Proposed Action

Describe the preferred alternative from Findings, Section 5A:

Replace riprap and geotextile

Total installation cost identified in this DSR, Section 3: \$ 5,355.00

Section 1F NRCS State Office Review and Approval

Reviewed By: _____ Date Reviewed: _____
State EWP Program Manager

Approved By: _____ Date Approved: _____
State Conservationist

PRIVACY ACT AND PUBLIC BURDEN STATEMENT

NOTE: The following statement is made in accordance with the Privacy Act of 1974, (5 U.S.C. 552a) and the Paperwork Reduction Act of 1995, as amended. The authority for requesting the following information is 7 CFR 624 (EWP) and Section 216 of the Flood Control Act of 1950, Public Law 81-516, 33 U.S.C. 701b-1; and Section 403 of the Agricultural Credit Act of 1978, Public Law 95334, as amended by Section 382, of the Federal Agriculture Improvement and Reform Act of 1996, Public Law 104-127, 16 U.S.C. 2203. EWP, through local sponsors, provides emergency measures for runoff retardation and erosion control to areas where a sudden impairment of a watershed threatens life or property. The Secretary of Agriculture has delegated the administration of EWP to the Chief or NRCS on state, tribal and private lands. Signing this form indicates the sponsor concurs and agrees to provide the regional cost-share to implement the EWP recovery measure(s) determined eligible by NRCS under the terms and conditions of the program authority. Failure to provide a signature will result in the applicant being unable to apply for or receive a grant the applicable program authorities. Once signed by the sponsor, this information may not be provided to other agencies, IRS, Department of Justice, or other State or Federal Law Enforcement agencies, and in response to a court or administrative tribunal. The provisions of criminal and civil fraud statutes, including 18 U.S.C. 286, 287, 371, 641, 651, 1001; 15 U.S.C. 714m; and 31 U.S.C. 3729 may also be applicable to the information provided. According to the Paperwork Reduction Act of 1995, an agency may not conduct or sponsor, and a person is not required to respond to a collection of information unless it displays a valid OMB control number. The valid OMB control number for this information collection is 0578-0030. The time required to complete this information collection is estimated to average 117/1.96 minutes/hours per response, including the time for reviewing instructions, searching existing data sources, field reviews, gathering, designing, and maintaining the data needed, and completing and reviewing the collection information.

USDA NONDISCRIMINATION STATEMENT

"The U.S. Department of Agriculture (USDA) prohibits discrimination in all its programs and activities on the basis of race, color, national origin, age, disability, and where applicable, sex, marital status, familial status, parental status, religion, sexual orientation, genetic information, political beliefs, reprisal, or because all or part of an individual's income is derived from any public assistance program. (Not all prohibited bases apply to all programs.) Persons with disabilities who require alternative means for communication of program information (Braille, large print, audiotape, etc.) should contact USDA's TARGET Center at (202)720-2600 (voice and TDD). To file a complaint of discrimination, write to USDA, Director, Office of Civil Rights, 1400 Independence Avenue, SW., Washington, DC 20250-9410, or call (800)795-3272 (voice) or (202) 720-6382 (TDD). USDA is an equal opportunity provider and employer.

Civil Rights Statement of Assurance

The program or activities conducted under this agreement will be in compliance with the nondiscrimination provisions contained in the Titles VI and VII of the Civil Rights Act of 1964, as amended; the Civil Rights Restoration Act of 1987 (Public Law 100-259); and other nondiscrimination statutes: namely, Section 504 of the Rehabilitation Act of 1973, Title IX of the Amendments of 1972, the Age Discrimination Act of 1975, and the Americans with Disabilities Act of 1990. They will also be in accordance with regulations of the Secretary of Agriculture (7 CFR 15, 15a, and 15b), which provide that no person in the United States shall on the grounds of race, color, national origin, gender, religion, age or disability, be excluded from participation in, be denied the benefits of, or otherwise subjected to discrimination under any program or activity receiving Federal financial assistance from the U.S. Department of Agriculture or any agency thereof.

Section 2 Environmental Evaluation

2A Resource Concerns	2B Existing Condition	2C Alternative Designation		
		Proposed Action	No Action	Alternative
		Replace riprap and geotextile	Continued erosion and instability to dam	None considered
2D Effects of Alternatives				
Soil				
Erosion Stream Bank	Severe erosion into Bear Creek	Embankment remains stable	Potential loss of structure	
Water				
Water Quality - Excessive Sediment	sediment is delivered directly to stream in eroded area	sediment delivery is reduced	sediment is delivered directly to stream in eroded area	
Air				
Plant				
Animal				
Other				

Section 2E Special Environmental Concerns

Resource Consideration	Existing Condition	Alternatives and Effects		
		Proposed Action	No Action	Alternative
Clean Water Act Waters of the U.S.	No discharge into waters of the U.S.	NA	NA	N/A
Coastal Zone Management Areas	N/A	N/A	N/A	N/A
Coral Reefs	N/A	N/A	N/A	N/A
Cultural Resources	Not on present inventory, none present during site inspection.	No impact.	No impact.	N/A
Endangered and Threatened Species	Site inspection conducted, no Indiana bat habitat, none present.	N/A	N/A	N/A
Environmental Justice	Per DSR5600-2, No adverse effect on minority or low income populations.	Per DSR5600-2, No adverse effect on minority or low income populations.	Per DSR5600-2, No adverse effect on minority or low income populations.	N/A
Essential Fish Habitat	No fish habitat will be adversely affected.	No impact.	N/A	N/A
Fish and Wildlife Coordination	No modification of stream channel.	No impact.	N/A	N/A
Floodplain Management	Disturbed areas are not ag land.	N/A	N/A	N/A
Invasive Species	Exposed soil areas are susceptible to spread of invasive species.	Shaping and reseeded will help control spread of invasive species.	Exposed soil areas are susceptible to spread of invasive species.	N/A
Migratory Birds	Not present, No nesting at site.	No impact.	N/A	N/A
Natural Areas	Not present.	N/A	N/A	N/A
Prime and Unique Farmlands	Not present. Area is not farmland.	N/A	N/A	N/A
Riparian Areas	Not present.	N/A	N/A	N/A
Scenic Beauty	Eroded spillway outlet	Area will be restored to predisaster conditions.	N/A	N/A
Wetlands	Not present.	N/A	N/A	N/A
Wild and Scenic Rivers	Not present.	N/A	N/A	N/A

Completed By: _____

Date: _____

DSR Number: FY-FIP SP SI

Section 2F Economic

This Section must be completed for each alternative considered (attached additional sheets as necessary)

Alternative:	None considered	Future Damages (\$)	Damage Factor (%)	Near Term Damage Reduction
Properties Protected (Private)				
Properties Protected (Public)				
Business Losses				
Other				
Total Near Term Damage Reduction				
Cost from Section 3				
Net Benefit (Total Near Term Damage Reduction minus Cost from Section 3)				

Completed By: _____ Date: _____

Notes:

DSR Number: FY-FIP SP SI

Section 2G Social Considerations

(attach additional sheets as necessary)

	YES	NO	Remarks
Has there been a loss of life as a result of the watershed impairment?	<input type="checkbox"/>	<input checked="" type="checkbox"/>	
Is there the potential for loss of life due to damages from the watershed impairment?	<input type="checkbox"/>	<input checked="" type="checkbox"/>	
Has access to a hospital or medical facility been impaired by the watershed impairment?	<input type="checkbox"/>	<input checked="" type="checkbox"/>	
Has the community as a whole been adversely impacted by the watershed impairment (life and property ceases to operate in the normal capacity)	<input checked="" type="checkbox"/>	<input type="checkbox"/>	
Is there a lack or has there been a reduction of public safety due to the watershed impairment?	<input checked="" type="checkbox"/>	<input type="checkbox"/>	If structure were to fail, Daisey Blvd. would be inundated

Completed By: _____

Date: _____

Section 2H Group Representation and Disability Information

This section is completed only for the preferred alternative selected.

Group Representation	Number
American Indian / Alaska Native Female Hispanic	
American Indian / Alaska Native Female Non-Hispanic	
American Indian / Alaska Native Male Hispanic	
American Indian / Alaska Native Male Non-Hispanic	
Asian Female Hispanic	
Asian Female Non-Hispanic	
Asian Male Non-Hispanic	
Asian Male Hispanic	
Black or African American Female Hispanic	
Black or African American Female Non-Hispanic	
Black or African American Male Hispanic	
Black or African American Male Non-Hispanic	
Hawaiian Native / Pacific Islander Female Hispanic	
Hawaiian Native / Pacific Islander Female Non-Hispanic	
Hawaiian Native / Pacific Islander Male Hispanic	
Hawaiian Native / Pacific Islander Male Non-Hispanic	
White Female Hispanic	
White Female Non-Hispanic	8
White Male Hispanic	
White Male Non-Hispanic	7
Total Group	15

Census tract(s): 15 vehicles per day

Completed By: _____ Date: _____

Section 2I: Required consultation or coordination between lead agency and / or the RFO and another governmental unit including tribes

Easements, permissions or permits:

Landrights easement to enter Ray Lehn's land

Mitigation Description:

Agencies, persons and references consulted or to be consulted:

Section 4 NRCS EWP Funding Priority

Complete the following section to compute the funding priority for the recovery measures in this application (see instructions on page 10)

Priority Ranking Criteria	YES	NO		Ranking Number Plus Modifier
1. Is this an exigency situation?	<input type="checkbox"/>	<input checked="" type="checkbox"/>		3e
2. Is this site where there is serious, but not immediate threat to human life?	<input type="checkbox"/>	<input checked="" type="checkbox"/>		
3. Is this site where buildings, utilities or other important infrastructure components are threatened?	<input checked="" type="checkbox"/>	<input type="checkbox"/>		
4. Is this site a funding priority established by the NRCS Chief?	<input type="checkbox"/>	<input type="checkbox"/>		
The following are modifiers for the above criteria.			Modifier	
a. Will the proposed action or alternatives protect or conserve federally-listed threatened and endangered species or critical habitat?			<input type="checkbox"/> a	
b. Will the proposed action or alternatives protect or conserve cultural sites listed on the National Register or Historic Places?			<input type="checkbox"/> b	
c. Will the proposed action or alternatives protect or conserve prime or important farmland?			<input type="checkbox"/> c	
d. Will the proposed action or alternatives protect or conserve existing wetlands?			<input type="checkbox"/> d	
e. Will the proposed action or alternatives maintain or improve current water quality conditions?			<input checked="" type="checkbox"/> e	
f. Will the proposed action or alternatives protect or conserve unique habitat, including but not limited to, areas inhabited by State-listed species, fish and wildlife management area or State identified sensitive habitats?			<input type="checkbox"/> f	

Enter priority computation in Section 1A, NRCS Entry, Funding priority number

Remarks:

Section 5A Findings

Finding: Indicate the preferred alternative from Section 2 (Enter to Section 1E):

Replace riprap and geotextile

I have considered the effects of the action and the alternatives on the Environmental, Economic, Social, the Special Environmental Concerns and the extraordinary circumstances (40 CFR 1508.27). I find for the reasons stated below, that the preferred alternative:

Has been sufficiently analyzed in the EWP PEIS (reference all that apply)

Chapter 5.2.2.3.2

Chapter _____

Chapter _____

Chapter _____

Chapter _____

May require the preparation of an environmental assessment or environmental impact statement.

The action will be referred to the NRCS State Office on this date: _____

NRCS representative of the DSR team:

Signature: _____

Name/Title _____

Date: _____

Section 5B Comments:

see attached page 11/14 for signatures

Section 5B Sponsor Concurrence:

Sponsor Representative:

Signature: _____

Name/Title _____

Date: _____

Section 6 Attachments:

- A. Location Map
- B. Site Plan or Sketches
- C. Other: _____

INSTRUCTIONS FOR COMPLETING THE NRCS-PDM-20, DSR

	Explanation of Requested Item	Who Completes
Section 1	Enter Site Sponsor, Location, Evaluation, Selected Alternative, and Reviewed and Approval Signatures.	NRCS completes with Voluntary assistance from Sponsor except for NRCS only portion of Section 1A.
1A	Enter the Date, DSR Number, Project Number. For NRCS only enter Eligible Yes/No, Approved Yes/No, Funding Priority Number, and Limited Resource Area Yes/No.	
1B	Sponsor Name, Address, Telephone, Fax	
1C	Enter site location County, State, Congressional District, Latitude, Longitude, Section, Township, Range, UTM Coordinates, Drainage Name, Reach within drainage, and Damage Description.	
1D	Enter Yes/No and any Remarks for the Site Evaluation information. Any No response means the site is not eligible for EWP assistance and no further information is necessary to complete the DSR. (See NEWPPM 390-502.03 and 390-502-04) Enter Yes/No regarding whether the affected public has been informed of the EWP program.	
1E	Enter the proposed treatment and the cost of installation. NRCS only.	NRCS only
1F	NRCS Review and Approval.	

	Explanation of Requested Item	Who Completes
Section 2	Use available natural resource, economic, and social, information, including the EWP Programmatic Environmental Impact Statement (PEIS), to briefly describe the effects of the alternatives to the proposed action including the “no action” alternative. Typically, the proposed action and no action are the alternatives considered for EWP recovery measures due to the focus on repairing or preventing damages within a watershed. However, in cases where additional alternatives are considered, include all pertinent information to adequately address the additional alternatives (e.g., proposed action would be bio-engineering for bank stabilization, no action alternative, and an additional alternative may be riprap for bank stabilization). Do not leave blanks where a consideration is not applicable, use NA to indicate the factor was considered but not applicable for the alternative.	NRCS completes with voluntary assistance from Sponsor.
2A	List all resource concerns which are relevant to the area of the proposed action and alternatives. Refer to National Bulletin 450-5-8 TCH-COMPLETING AND FILING MEASUREMENT UNITS FOR RESOURCE CONCERNS IN THE FIELD OFFICE TECHNICAL GUIDE (FOTG). Note: the affected area may extend beyond the construction foot print (ex. where water quality or water rights are affected downstream of the site).	
2B	Provide a brief description of the present condition of each resource concern listed in 2A. Quantify conditions where possible. Reference accompanying photo documentation.	
2C	2C Briefly summarize the practice/system of practices being proposed, as well as the “no action” alternative, and any other alternatives being considered. The “no action” alternative is the predicted future condition if no action is taken.	
2D	Document the efforts of the proposed action and alternatives for the considerations listed in 2A. Reference applicable quality criteria, information in the CPPE, and quantify effects whenever possible. Consider both long-term and short-term effects. Consider any effects which may be individually minor but cumulatively significant at a larger scale or over an extended time period. Clearly define the differences between proposed action, no action, and the other alternatives.	

2E	Enter Special Environmental Concerns for Clean Water Act Waters of the U.S., Coastal Zone Management Areas, Coral Reefs, Cultural Resources, Endangered and Threatened Species, Environmental Justice, Essential Fish Habitat, Fish and Wildlife Coordination, Floodplain Management, Invasive Species, Migratory Birds, Natural Areas, Prime and Unique Farmlands, Riparian Areas, Scenic Beauty, Wetlands, and Wild and Scenic Rivers for each alternative considered. In the case where the selected alternative from Section 5A impacts a Special Environmental Concern, additional information, coordination, permitting or mitigation may be required and adequate documentation should be prepared and attached to the DSR to identify how NRCS or the Sponsor addressed the concern.	
2F	Identify Property Protected both private and public, business losses and other economic impacts considered for each alternative. Enter the dollar value of the potential future damages if no action is taken in the Future Damage (5) column. This would be the estimate of the value lost if the EWP recovery measure is not installed. Use the repair cost or damage dollar method to determine the estimate of future damages. The repair cost method uses the costs to return the impaired property, good, or services based on their original pre-event condition or value. The damage dollar method uses an estimate of the future damage to value (e.g. if the structure is condemned, then enter the value of the structure). Enter the estimated amount based upon existing information or information furnished by the sponsor, contractors or others with specific knowledge for recovery from natural disasters for each alternative considered. Often market values for properties or services can be obtained from personnel at the local county/parish tax assessment office. The DSI team needs to determine the Damage Factor (%) which is a coefficient reduction to a property that is attributed to the effect of the proposed EWP recovery measures. Use an appropriate estimate of how much of the damage the EWP recovery measure will avoid for the alternative being considered. If the recovery measures from a single site will prevent 100 percent of the damage use 100 percent. The Near Term Damage Reduction is the Future Damage (\$) times the Damage Factor (%). Sum the Near Term Damage Reduction values to calculate the Total Near Term Damage Reduction. Enter the Net Benefit which is computed by subtracting the Cost from section 3 from the total near term damage reduction. The economic section must be completed for each alternative considered. Attach additional sheets as necessary.	
2G	Enter information to describe the potential social impacts and considerations for each alternative. Answer Yes or No and any remarks necessary to adequately address each question. The information may be obtained through interviews with community leaders, government officials or sponsors. Factors such as road closures, loss of water, electricity, access to emergency services are used when answering whether the community as a whole has been impaired. This information is part of the environmental evaluation portion of the DSR but may be pertinent in Section 4 regarding priorities. The Social Considerations Section must be completed for each alternative considered. Attach additional sheets as necessary.	
2H	Enter the Group Representation Information for the preferred alternative. Use the most recent census tract information based upon where the EWP recovery measures are located.	Sponsor completes

2I	Enter whether easement, permissions, or permits, and mitigation will require consultation or coordination for the selected alternative (e.g., Clean Water Act section 404 permit, Endangered Species Act section 10 permits, and any State or county permits or requirements). Describe mitigation to be applied that will offset any adverse impacts and attach any documentation from other agencies regarding mitigation requirements.	NRCS completes with voluntary assistance from Sponsor.
----	---	--

	Explanation of Requested Item	Who Completes
Section 3	Enter Proposed Recovery Measure(s) including Quantity, Units, Unit Cost, and Total Amount Cost. Enter sum of all Proposed Recovery Measure Costs to calculate Total Costs. Enter Total Installation Costs in Section 1F. The Engineering Cost Estimate must be completed for each alternative considered. Attach additional sheets as necessary.	NRCS completes with voluntary assistance from Sponsor.

	Explanation of Requested Item	Who Completes
Section 4	This section is used to determine the Funding Priority for the preferred alternative and sequence for initiating recovery measures. Enter Yes/No for questions 1 through 4 and enter the number (exigency 1, serious threat to human life 2, etc.) in the right column, Ranking Number Plus Modifier. Complete the Modifier portion by placing the alphabetic indicator a. through f. in the Modifier column. Complete the Ranking Number Plus Modifier column by entering the alphabetic indicator(s) that exists within the site. The number of the site designates the priority (e.g., a site with a designation of 2 is a higher priority than a site with a designation of 3). The modifiers increase the priority for the same numeric site (e.g., a site with a designation of 1a, would be a higher priority than a site with a designation of 1, a site with a designation of 2bc would be a higher priority than a site designated as 2b). Enter the Funding Priority in Section 1A.	NRCS completes with voluntary assistance from Sponsor.

	Explanation of Requested Item	Who Completes
Section 5	Enter the Findings, Rationale Supporting Findings, NRCS Representative signature and Comments, and Concurrence signature by the Sponsor(s).	NRCS completes.
5A	Indicate the preferred alternative and check the applicable finding being made. The NRCS Representative signs indicating the Finding selected. If the proposed action was adequately addressed in the PEIS, check all appropriate chapter paragraphs.	
5B	Enter any additional Comments.	
5C	Sponsor(s) review and concurrence. Sponsor(s) signature.	

	Explanation of Requested Item	Who Completes
Section 6	Include attachments for location map, site sketch or plan and other information as needed.	NRCS completes with voluntary assistance from Sponsor.

Help sheets to complete

➤ Group Representation and Disability Information (2H)

and

➤ Section 5A Findings (PEIS analysis)

Option 1 for section 2H www.census.gov

The screenshot shows the Census Bureau homepage in a Windows Internet Explorer browser. The address bar shows <http://www.census.gov/>. The browser's menu bar (File, Edit, View, Favorites, Tools, Help) is circled in red. The website header includes the U.S. Department of Commerce logo and the United States Census Bureau logo. A navigation menu with links for People, Business, Geography, Data, Research, and Newsroom is also circled in red. The 'Data' menu is open, showing options like Quick Facts, American FactFinder, Easy Stats, Population Finder, American Community Survey, 2010 Census, Economic Census, Interactive Maps, Data Visualizations, Training & Workshops, Data Tools, Catalogs, and Publications. The main content area features a 'U.S. and World Population Clock' with a digital display showing 315,655,200 and a list of population change components. To the right, there are 'Census Bureau Economic Indicators' such as Wholesale Inventories, Trade Balance, and Manufacturers' Goods. Below the main content are sections for QuickFacts, Census News (with a media advisory about HUD and Census Bureau experts), and Stat of the Day (highlighting Manufactured Goods Orders).

▼ **Community Facts**
Find popular facts (population, income, etc.) and frequently requested data about your community.
Enter a state, county, city, town, or zip code:

▶ **Guided Search**
▶ **Advanced Search**
▶ **Download Options**



American FactFinder provides access to data about the United States, Puerto Rico and the Island Areas. The data in American FactFinder come from several censuses and surveys. For more information see [Using FactFinder](#) and [What We Provide](#).

Using American FactFinder
Learn about American FactFinder's [functions and features](#).

News and Notes

 Jun 27, 2013
View the 2010 Census Summary File for American Samoa for detailed information...

◀ ■ ■ ■ ■ ■ ▶

[view all news, release schedules, and more »](#)

American FactFinder - Community Facts - Windows Internet Explorer
http://factfinder2.census.gov/faces/nav/jsf/pages/community_facts.xhtml

File Edit View Favorites Tools Help
Favorites Suggested Sites
American FactFinder - Community Facts

U.S. Department of Commerce
United States Census Bureau
AMERICAN FactFinder

MAIN **COMMUNITY FACTS** GUIDED SEARCH ADVANCED SEARCH DOWNLOAD OPTIONS

Community Facts - Find popular facts (population, income, etc.) and frequently requested data about your community.

Enter a state, county, city, town, or zip code:

Population (2010 Census) Population (Latest Estimate) Age Business and Industry Education Housing Income Origins and Language Poverty Veterans

Richland County, Wisconsin
[We found more results for your geography search >>](#)

Census 2010 Total Population
18,021 Source: 2010 Demographic Profile

Popular tables for this geography:

- 2010 Census
 - Population, Age, Sex, Race, Households and Housing ...
- American Community Survey
 - Education, Marital Status, Relationships, Fertility, Grandparents ...
 - Income, Employment, Occupation, Commuting to Work ...
 - Occupancy and Structure, Housing Value and Costs, Utilities ...
 - Sex and Age, Race, Hispanic Origin, Housing Units ...
- Population Estimates Program
 - Annual Population Estimates ...
- Economic Census
 - Number of Establishments, Annual Payroll, Number of Employees ...

Want more? Use [Guided Search](#) or [Advanced Search](#), or visit [Census.gov's Quick Facts](#).

Scroll down on this screen to find Group Representation Information

The screenshot shows the American FactFinder interface in Internet Explorer. The browser address bar displays the URL: http://factfinder2.census.gov/faces/tableservices/jsf/pages/productview.xhtml?pid=DEC_10_DP_DPDP1. The page header includes the U.S. Department of Commerce logo, the 'United States Census Bureau' logo, and the 'AMERICAN FactFinder' title. Navigation links include 'MAIN', 'COMMUNITY FACTS', 'GUIDED SEARCH', 'ADVANCED SEARCH', and 'DOWNLOAD OPTIONS'. The main content area is titled 'Community Facts - Find popular facts and frequently requested data about your community'. It features two tabs: '1 Community Facts' and '2 Table Viewer'. The selected tab shows the 'Profile of General Population and Housing Characteristics: 2010' for '2010 Demographic Profile Data'. Below this, there is a 'Table View' button and a 'BACK TO COMMUNITY FACTS' button. The 'Actions' section includes links for 'Modify Table', 'Bookmark', 'Print', 'Download', and 'Create a Map'. There are also links for 'View Geography Notes' and 'View Table Notes'. A note provides information on confidentiality protection, nonsampling error, and definitions, with a link to <http://www.census.gov/prod/cen2010/doc/dpsf.pdf>. The 'Geography' dropdown is set to 'Richland County, Wisconsin'. A table displays the following data:

Subject	Number	Percent
SEX AND AGE		
Total population	18,021	100.0
Under 5 years	1,175	6.5
5 to 9 years	1,184	6.6
10 to 14 years	1,103	6.1

McAfee SiteAdvisor

Subject	Number	Percent
RACE		
One race	17,803	99.3
White	17,636	98.4
Black or African American	27	0.2
American Indian and Alaska Native	46	0.3
Asian	38	0.2
Asian Indian	4	0.0
Chinese	7	0.0
Filipino	6	0.0
Japanese	5	0.0
Korean	8	0.0
Vietnamese	1	0.0
Other Asian ¹	7	0.0
Native Hawaiian and Other Pacific Islander	5	0.0
Native Hawaiian	0	0.0
Guamanian or Chamorro	3	0.0
Samoan	0	0.0
Other Pacific Islander ²	2	0.0
Some other race	51	0.3
Two or more races	121	0.7
Race alone or in combination with one or more other races ³		
White	17,747	99.0
Black or African American	65	0.4
American Indian and Alaska Native	97	0.5
Asian	65	0.4
Native Hawaiian and Other Pacific Islander	5	0.0
Some other race	69	0.4
HISPANIC OR LATINO AND RACE		
Total population	17,924	100.0
Hispanic or Latino (of any race)	167	0.9
Mexican	72	0.4
Puerto Rican	31	0.2

Chapter 5 Environmental Consequences

5.2 Impacts of EWP Practices & Floodplain Easements on Watershed Ecosystems

5.2.1 Section Organization and Assumptions

5.2.2 Impacts of **Current** EWP Watershed Restoration Practices.

5.2.2.1 Practices that **Restore Channel Capacity** (Debris Removal)

5.2.2.1.1. Effects of Disaster Debris on Stream and Related Ecosystems

5.2.2.1.2 Effects of Current Practices to Restore Hydraulic Capacity (Debris Removal)

5.2.2.1.3 Comparison of the Impacts of Debris Disposal Practices

5.2.2.2 Practices that **Protect Stream banks**

5.2.2.2.1 Effects of Stream bank Protection on Stream and Related Ecosystems

5.2.2.2.2 Effects of Current EWP Practices to Repair Stream banks

5.2.2.2.3 Comparison of the Impacts of Stream bank Restoration Practices

5.2.2.3 **Dam, Dike, and Levee Repair**

5.2.2.3.1 Impacts of Disaster-damaged Dams, Dikes, and Levees on the Environment

5.2.2.3.2 Impacts of EWP Dam, Dike, and Levee Repair or Removal

5.2.2.4 Practices that **Protect Structures in Floodplains**

5.2.2.4.1 Floodplain Diversions

5.2.2.4.2 Sediment/Debris Basins

5.2.2.4.3 Effects of Current EWP Practices to Protect Structures in Floodplains

5.2.2.5 Practices that **Restore Watershed Uplands** (Critical Area Treatment)

5.2.2.5.1 Impacts of Disasters that Create Critical Upland Areas

5.2.2.5.2 Impacts of EWP Practices to Restore Critical Areas

5.2.2.5.3 Comparison of the Impacts of Critical Area Treatment Techniques

5.2.3 Impacts of **Proposed** EWP Watershed Restoration Practices (Rosgen)

5.2.3.1 Restoration Using Natural Stream Dynamics Principles

5.2.3.1.1 Effects of Stream bank Protection on Stream and Related Ecosystems

5.2.3.1.2 Effects of Proposed EWP Practices to Repair Stream banks

5.2.3.2 Restoration of Agricultural Uses in Floodplains (Floodplain Deposition Removal)

5.2.3.2.1 Effects of Floodplain Deposition on Stream and Related Ecosystems

5.2.3.2.2 Effects of EWP Practices to Restore Agricultural Use to Floodplains

5.2.3.3 Restoration of Watershed Uplands (Tornado Debris Removal)

5.2.3.3.1 Effects of Upland Disasters on Watershed Ecosystems

5.2.3.3.2 Impacts of Upland Debris Removal

5.2.3.4 Restoration of Damaged Structural/Enduring/Long-life Conservation Practices

5.2.3.4.1 Effects of Damaged Conservation Practices on Stream and Related Ecosystems

5.2.3.4.2 Effects of EWP Practices to Repair Enduring Conservation Practices

5.2.4 Impacts of Current EWP Floodplain Easements NOT INCLUDED in the SUMMARY

APPENDIX D: SAMPLE COOPERATIVE AGREEMENT

Agreement Number: -FY-
Fund Code: **NR.AI.EWMP.55.50 XXF**
Amount \$
Fund Code: **NR.AI.EWMP.55.50 XXT**
Amount \$
Expiration date:

**COOPERATIVE AGREEMENT
(#)**

between the

**UNITED STATES DEPARTMENT OF AGRICULTURE
NATURAL RESOURCES CONSERVATION SERVICE (NRCS)**

and

_____ County, WI

**PROJECT: _____, WI (FY-XX) Emergency Watershed Protection (EWP) Project –
Technical and Financial Assistance**

I. AUTHORITY

- A. Code of Federal Regulations, Title 7: Agriculture, Part 624-Emergency Watershed Protection, paragraph 624.8(c) authorizes NRCS to enter into a cooperative agreement with a sponsor.
- B. For purposes of this agreement, "Sponsor" refers to **??, WI** and is defined in 7 CFR 624.4(g) as: "Project sponsor means a State government or a State agency or a legal subdivision thereof, local unit of government, or any Native American tribe or tribal organization as defined in section 4 of the Indian Self-Determination and Education Assistance Act (25 U.S.C. 450b), with a legal interest in or responsibility for the values threatened by a watershed emergency; is capable of obtaining necessary land rights; and is capable of carrying out any operation and maintenance responsibilities that may be required."

II. PURPOSE

- A. The purpose of this agreement is to provide financial and technical assistance to the Sponsor to implement emergency recovery measures. The damage was caused by unusually heavy runoff on (date).
- B. This agreement provides NRCS financial assistance to the Sponsor as follows:
 - 1. Total construction costs are estimated to be \$_____. Financial Assistance (FA) Funds in the amount of \$_____ are for on-the-ground construction work (up to 75% of total construction costs). (Sponsor name) is responsible for 25% of these costs or \$_____ in either direct cash expenditures by the Sponsor or the value of in-kind materials and/or construction services. Construction services include costs associated with materials, equipment, and labor. (FA money)

2. This agreement also provides NRCS financial assistance to the Sponsor of up to \$ ____ for technical and administrative costs directly charged to the project. This amount, \$ ____, is an estimate. Technical Assistance (TA) funding for the agreement may be insufficient to cover all costs and require the Sponsor to contribute resources to fully complete all necessary work. (TA money)

NOTE: The Sponsor is prohibited from using federal funds as any portion of the cost-share requirement. Funds are considered federal in origin if disbursed directly to the Sponsor by a federal government agency or indirectly through another entity. For example, federal funding to a state agency passed by the state to a county and from the county to a city is considered to be federal in origin by the state, the county, and the city. Neither the state, county, nor city could count the federal funds as a cost-share contribution.

III. BENEFITS

NRCS funding will be used to implement emergency recovery measures, providing immediate benefits to County residents and long-term benefits to the general public in protection of the watershed.

IV. ATTACHMENTS TO AGREEMENT

The following are incorporated into the agreement by reference:

Reference A: Approved DSRs:

<u>DSR #</u>	<u>Name</u>
--------------	-------------

Reference B: General Terms and Conditions for Grants and Cooperative Agreements

Reference C: Required Contract Clauses and Bonding Requirements

Reference D: NRCS Supplement to OSHA Parts 1910 and 1926

Reference E: 7 CFR Part 624, Emergency Watershed Protection Program

Reference F: 7 CFR 3016.36, Procurement

Reference G: The following Standard and Administrative Forms submitted by the Sponsor:

SF 424 Applications for Federal Assistance

SF 424C Budget Information Construction Programs

SF 424D Assurances – Construction Programs

SF 270 Requests for Advance or Reimbursement

ADS 78 Assurances Relating to Real Property Acquisition

Reference H: Quarterly Accrual Report Format

V. TERM OF THE AGREEMENT

This agreement, signed by the NRCS State Conservationist, is effective on the date of obligation of funds and continues in full force and in effect through _____. The agreement may be amended to extend the date. Requests from the Sponsor to the NRCS State Conservationist to extend the term of the agreement must be submitted in writing 60 days prior to the expiration date of the agreement and/or amendments and include a justification documenting the need for the extension.

VI. CONTACT INFORMATION

Douglas County	WI NRCS
<u>Project Manager</u>	<u>Project Manager</u>
Name	Name
Title	State Conservation Engineer
County	NRCS
Address	8030 Excelsior Drive Suite 200 Madison, WI 53717
Phone:	Phone: 608-662-4422 x__
Cell:	Cell:
Fax:	Fax: 608-662-4430
Email:	Email: Name@wi.usda.gov
<u>Financial Contact</u>	<u>Administrative Contact</u>
Name	Name
Title	Contract Specialist
County	NRCS
Address	8030 Excelsior Drive Suite 200 Madison, WI 53717
Phone:	Phone: 608-662-4422 x__
Cell:	Cell:
Fax:	Fax: 608-662-4430
Email:	Email: Name@wi.usda.gov
Additional Contact	NRCS Liaison
Name	
Title	Area Engineer
County	NRCS
Phone:	Phone:
Cell:	Cell:
Fax:	Fax:
Email:	Email:

VII. RESPONSIBILITIES AND OBLIGATIONS:

A. **(Sponsor name)** will perform measures to reduce the hazard from further damages and maintain the safety of dwelling structures by stabilizing stream banks on the ??.

1. **Identified sites** are:

DSR # _____ **Name**

- a. The Sponsor will solicit, evaluate, award, and manage the design services contract(s) for a Professional Engineer (PE) to achieve the objectives of the damage survey reports, meets the criteria in the applicable NRCS practice standards (e-fotg CPS 580, Streambank and shoreline Protection) and EWP program rules including:
 - Geologic investigations of the sites listed
 - Design report, addressing items pertaining to: geology, geotechnical, structural, hydrology, and hydraulics, as applicable.
 - Construction drawings and specifications, specific to individual sites.
 - Development of an Operations and Maintenance Plan
 - Development of a Construction Quality Assurance/ Inspection Plan
 - Bidding documents to enable the Sponsor to advertise for construction specific to individual sites
 - Oversee construction as described in the Quality Assurance Plan of the approved designs
 - Complete As-built drawings
 - Other items
- b. The Sponsor will solicit, evaluate, award, and manage the construction contract(s) for on-the-ground construction.
- c. Construction documents will include USDA bonding requirements and construction clauses (reference attachment) and the NRCS Supplement to OSHA Parts 1910 and 1926 (reference attachment).
- d. The Sponsor will adhere to procurement policies of the Code of Federal Regulations, Section 7, 3016.36 (7 CFR 3016.36) entitled "Procurement" (see attachment).
- e. The Sponsor will comply with the General Terms and Conditions for Grants and Cooperative Agreements (see attachment).

2. **Funding and Cost-Share** - NRCS funding for this project is provided to the Sponsor in two separate NRCS funding accounts. [Technical Assistance (TA) and Financial Assistance (FA)] In order for funds to be expended according to NRCS program requirements, the Sponsor must account for expenditures separately. Following is a description of the accounts:

- a. **Technical Assistance (TA)** funds may be expended for items such as:
 - (1) Costs of hiring a Professional Engineer's services.

- (2) Costs for developing and issuing a solicitation(s) for design services, evaluating offers, and awarding a design services contract.
 - (3) Costs of administering and managing the Sponsor's design services contract.
 - (4) Costs for developing and issuing a solicitation(s) for construction, evaluating offers, and awarding a construction contract.
 - (5) Costs of administering and managing the Sponsor's construction contract.
 - (6) Other administrative costs such as verifying invoices, record keeping, and accounting for Sponsor resources expended for the project. These administrative matters include but shall not be limited to facilities, clerical expenses, and legal counsel, including the fees of such attorney or attorneys deemed necessary by NRCS to resolve any legal matters
 - (7) NRCS is obligating TA funding of \$ _____. This amount should be sufficient to cover all actual TA costs as described above. Upon receipt of the final SF-270 for the project, unexpended TA funding will be deobligated by NRCS to be reallocated to other nationwide EWP program projects.
- b. **Financial Assistance (FA)** funds (up to \$_____) are exclusively for actual allowable costs of on-the-ground construction. The total construction cost of the project is estimated to be \$_____.

- (1) NRCS is obligating FA funding \$_____ to the Sponsor for up to 75 percent of total actual allowable on-the-ground construction costs.
- (2) The Sponsor is responsible for cost-sharing 25 percent of total actual on-the-ground construction costs (estimated to be \$_____). The Sponsor's contribution may be comprised of Sponsor funds, the value of in-kind labor, materials, use of equipment, etc. for construction of the project.
- (3) Pay the contractor as provided in the contract(s). Submit billings for reimbursement of incurred costs to NRCS on Form SF-270, Request for Advance or Reimbursement. The request will be supported by documents such as the contractor's invoices that will permit NRCS to reasonable assure itself that such costs were necessary, adequately documented, and incurred for the NRCS cost-shared items of work described above.
- (4) Once the project is completed and all requests for reimbursement submitted, any excess funding remaining in the agreement (over and above the NRCS commitment of up to 75 percent of actual construction costs and within the not-to-exceed amount) will be deobligated from the agreement.

NOTE: EWP program rules prohibit NRCS from reimbursing the Sponsor for work performed prior to award date of this agreement (date agreement, signed by NRCS State Conservationist, is obligated).

3. **Pre-Construction Notification** - Prior to beginning any on-the-ground construction work, the Sponsor will review the following items and contact the NRCS Project Manager/Liaison, when necessary, to ensure any concerns relative to the following requirements have been addressed and resolved:
 - a. **Real Property Rights** - NRCS Form ADS-78 and attorney's opinion have been submitted to NRCS (see paragraph 4 below).
 - b. **Permits** - All Federal, State, and local permits have been applied for and received (see paragraph 5 below).
 - c. **Endangered Species Act Compliance** - Sponsor agrees to implement avoidance and minimization measures and conservation measures identified for threatened and endangered species through consultation under Section 7 of the Endangered Species Act (see paragraph 8 below).
 - d. **National Historic Preservation Act Compliance** – Construction contract awarded by the Sponsor incorporates all cultural resource requirements as determined by NRCS (see paragraph 7 below).
 - e. **National Environmental Protection Act Compliance** – The Sponsor is responsible for NEPA compliance (see paragraph 6 below)
 - f. **Quality Assurance and Inspection Staffing Plan** – the plan, developed by the PE, is acceptable to the Sponsor and NRCS.
 - g. **Operations and Maintenance Plan** – the plan, developed by PE, is acceptable to the Sponsor and NRCS. The Sponsor is responsible for 100 percent of operations and maintenance costs upon completion of the project.
4. **Real Property Rights** – Secure real property rights. The Sponsor will submit a completed ADS-78 form, Assurances Relating to Real Property Acquisition, to the NRCS Program Manager. An attorney's opinion must be attached to the form certifying an examination of the real property instruments and files was made and found to provide adequate land title, rights, permission and authority for the purpose(s) of the project. **All costs relative to obtaining property rights will be borne by the Sponsor. In accordance with EWP program regulations, NRCS cannot pay for these costs nor can they be counted as a cost-share contribution by the Sponsor.**
5. **Permits** - Ensure all applicable Federal, State, and local permits are obtained and work is performed in accordance with permit requirements. **All costs relative to obtaining required permits will be borne by the Sponsor. In accordance with EWP program regulations, NRCS cannot pay for these costs nor can they be counted as a cost-share contribution by the Sponsor.**
6. **National Environmental Protection Act Compliance (NEPA)** - The Sponsor is responsible for compliance with all NEPA requirements. **The County Project Manager must review the DSR prior to starting construction and comply with NEPA restrictions identified in the DSR. For questions related to NEPA compliance contact**

NRCS District Conservationist (NRCS DC), at (phone number) or (name@wi.usda.gov).

7. **National Historic Preservation Act Compliance** – Construction contracts awarded by the Sponsor must incorporate all cultural resource requirements as determined by NRCS. **If the Sponsor has not been contacted by NRCS prior to starting construction, the County Project Manager must contact the NRCS DC at (phone number) or (name@wi.usda.gov), or in writing, to verify that the Sponsor has taken all required action. Correspondence via email message to Andrew is acceptable.**
8. **Endangered Species Act Compliance** – The Sponsor is responsible for compliance with the Endangered Species Act including implementation of U.S. Fish and Wildlife avoidance and minimization measures and conservation measures identified for threatened and endangered species. **The County Project Manager must review the DSR prior to starting construction and comply with ESA restrictions identified in the DSR. For questions related to TSA, contact NRCS DC at (phone number) or (name@wi.usda.gov).**
9. **Construction Contract(s)** - Solicit, evaluate, award, and manage construction contract(s) in accordance with established Sponsor procurement policy and all applicable State and Federal laws and regulations. **Reference 7 CFR 3016.36, section entitled “Procurement” for procurement requirements, including required construction contract clauses and bonding requirements.** 7 CFR 3016 is accessible online, scroll down to “Regulations” and select 7 CFR 3016.
10. **Safety** - All contractors on NRCS assisted projects are required to perform their work in accordance with OSHA regulations, NRCS Supplement to OSHA Parts 1910 and 1926, and the Contract Work Hours and Safety Standards Act (40 USC 327-330) as supplemented by Department of Labor regulations (29 CFR Part 5). The Sponsor is responsible for periodically checking the contractor’s compliance. The Sponsor will notify NRCS of all accidents and/or injuries that occur on the NRCS assisted project.
11. **Engineering and Construction Performance** –
 - a. Ensure individuals and/or organizations providing engineering services employ a WI licensed professional engineer (PE) who directly supervises the staff performing the services or who serves as a Principal.
 - b. Ensure any designs, drawings and specifications submitted for a functional review to NRCS State Conservation Engineer, (name) , meet NRCS standards and are sealed by a licensed engineer. The documents will be certified as follows: **“To the best of my professional knowledge, judgment and belief, these construction plans and specifications (or this report, etc.) meet applicable NRCS standards.”** This certification statement will be signed and sealed by the WI licensed professional engineer.
 - c. Agree that NRCS engineering staff will perform a functional review of the design and specifications. A functional review shall consist of the following (as defined in NRCS National Engineering Manual (NEM) 505.03(b)(3) and Wisconsin NRCS State policy Subpart B - Use of Non-NRCS Engineering Services.

NRCS shall provide feedback in writing to the Sponsor if items of concern are discovered in the functional review.

The WI-NRCS Engineering website address is:

<http://www.nrcs.usda.gov/wps/portal/nrcs/main/wi/technical/engineering/>

NOTE: Designs and/or specifications that, upon cursory review by NRCS, appear to be unacceptable will be returned to the Sponsor for revision without further review by NRCS. The Sponsor bears the responsibility for ensuring that contracted architectural and engineering firms possess the skills required to successfully and efficiently perform the project work and that payment is made only for work performed in producing acceptable products.

- d. All construction will be performed in compliance with:
- (1) Sponsor developed design, specifications, and shoreline zoning
 - (2) NRCS standards
 - (3) Requirements of all necessary local, State, and Federal permits. The Sponsor is responsible for securing all permits and complying with permit requirements.
12. **Notification of Significant Events** - Immediately notify the NRCS Project Manager/Liaison of events that impact the project. Such events include problems, delays, and adverse or differing site conditions that will materially impair continuation of the project.
13. **Operations and Maintenance** – Submit the plan, developed by the PE, to NRCS for review, and conduct required operation and maintenance as described in the reviewed Operations and Maintenance Plan. The Sponsor is responsible for all operation and maintenance costs.
14. **Excess costs** - Accept all financial and other responsibility for excess costs resulting from failure of the Sponsor to obtain, or delay in obtaining, adequate land and water rights, permits, and licenses needed for the emergency watershed protection measures.
15. **Deficient Construction Services** - Accept liability for any damage and any additional construction costs to others to correct problems arising during or after construction resulting from deficient construction services performed by or through the Sponsor.
16. **Deviations from Certified Design** – The Sponsor will obtain NRCS concurrence, in writing, for any deviations from the PE's design and specifications. Every attempt will be made to contact NRCS for verbal concurrence of minor deviations and corrections that become necessary during construction; however, construction should not be delayed to await approval **unless there is reasonable doubt on the part of the Sponsor that the change will be unacceptable to NRCS. All minor changes and corrections, regardless of whether NRCS was verbally contacted or not, will be documented by the Sponsor in writing and submitted to the NRCS Project Liaison.**
17. **Removal or Relocation of Utilities** – The Sponsor will arrange and pay for any necessary location, removal, or relocation of utilities; **EWP program regulations prohibit NRCS from**

reimbursing the Sponsor or otherwise paying for any such costs nor do the costs qualify as a Sponsor cost-share contribution.

18. **Weekly Progress Reports** - Once a week, throughout the duration of construction or other EWP activities, digital images documenting construction progress will be submitted to the NRCS Project Liaison. **Photos will be accompanied by a narrative progress report documenting construction progress during the week.** Submission via e-mail is acceptable.
19. **Digital Photographic Diary/Documentation** -
 - a. Upon completion of the project, the Sponsor will provide photographs in digital format (*.jpg) on a CD to the NRCS Project Liaison. The photographic documentation should be a complete diary of activities from preconstruction through final inspection.
 - b. A set of final photos should be made of all completed project sites and should be taken from similar vantage points as the original pre-construction photos. Photos should be taken daily of construction activities and should show construction methods, subsurface materials encountered, construction problems as well as problem solutions, and any damages incurred during construction either natural or manmade.
20. **Increased Level of Protection** - If the Sponsor desires to increase the level of protection over and above that described in the NRCS Damage Survey Report (DSR), the Sponsor will be responsible for paying 100 percent of the costs of any unapproved and unfunded upgrade or additional work.
21. **Unforeseen events** - Events may occur that have significant impact upon the project. In such cases, the Sponsor must inform the NRCS Project Manager/Liaison either (1) verbally, if the issue is time-sensitive, with a written notice documenting the conversation submitted to NRCS within 24 hours of occurrence; or (2) if the issue is not time-sensitive, in writing, as soon as the following types of conditions become known:
 - a. Problems, delays, or adverse conditions which will materially impair the Sponsor's ability to meet the objective of the award. This disclosure must include a statement of the action taken, or contemplated, and any assistance needed to resolve the situation.
 - b. Favorable developments which enable meeting time schedules and objectives sooner or for less cost than anticipated or producing more beneficial results than originally planned.
22. **As-built Drawings** - Complete as-built drawings for the project. A copy of the as-built drawings will be submitted to the County's project manager.
23. **Requesting Reimbursement and Financial Reporting** – Reference "Payments" section in attachment entitled "General Terms and Conditions" .
24. **Nondiscrimination Requirements** - Recipients of Federally-Assisted Programs are required to post the following notice in their offices and include, in full, on all materials regarding this project that are produced by the recipient for public information, public education, or public distribution:

“In accordance with Federal law and U.S. Department of Agriculture policy, this institution is prohibited from discriminating on the basis of race, color, national origin, sex, age, or disability.

To file a complaint of discrimination write to USDA, Director, Office of Civil Rights, 1400 Independence Avenue, S.W., Washington, D.C. 20250-9410 or call (800) 795-3272 (voice) or (202) 720-6382 (TDD). USDA is an equal opportunity provider and employer.”

25. **Performance Reports** - In accordance with 7 CFR 3015.92, because this is a construction project, on-site technical inspections and certified percentage-of-completion data will be used to monitor progress. No written performance reports will be required.
26. **Accrual Reports** - NRCS requires quarterly accrual information. An accrual is the value of the work performed or will be performed in cooperation with NRCS but for which reimbursement has not yet been submitted on a SF-270. The completed Accrual Information form (Attachment E) must be submitted no later than 15 days prior to the end of the quarter (submit by March 15, June 15, September 15, and December 15). The U.S. Congress relies on audits of financial statements, including accrual information, to determine future funding amounts for NRCS on-going and new projects and programs. **Submit the accrual report to NRCS Contract Specialist listed contacts.**
27. The Sponsor will conduct all procurement activities in a manner that provides, to the maximum extent possible, free and open competition.
28. The Sponsor is responsible, without recourse to NRCS or USDA, for the settlement and satisfaction of all contractual and legal issues arising out of arrangements entered into between the Sponsor and others to carry out approved project activities. Matters concerning violation of law should be referred to the federal, state, or local authority having proper jurisdiction.
29. NRCS cannot reimburse the Sponsor for construction work performed prior to award date of this agreement (date of signature by NRCS State Conservationist).
30. Should inconsistencies arise between language in the agreement and the plan of work, the language in the agreement takes precedence.
31. The Federal Travel Regulations will serve as a guideline for any travel performed under this agreement.

B. NRCS will:

1. Reimburse the Sponsor up to \$____ in financial assistance (construction) funds (FA) toward expenses for the project and \$ ____ in technical/administrative assistance funding (TA). Funds will be expended as explained in this agreement. Approved TA funds expended prior to construction for items above (A. 2. a.) will be reimbursed to the Sponsor regardless if FA money is requested.
2. Provide a functional review of the Sponsor's design and specifications.

3. Review the Operations and Maintenance Plan for the project developed by the Sponsor. All expenses for operations and maintenance are the responsibility of the Sponsor
4. Upon receipt of a properly completed SF-270, Request for Advance or Reimbursement, and requested proper supporting documentation, assess description of work completed relative to allowable funds requested and, if request is reasonable, approve and process payment to the Sponsor. In the event there are questions regarding the SF-270 and supporting documentation, NRCS will contact the Sponsor in a timely manner to resolve concerns.
5. Not be substantially involved with the technical assistance or contractual administration of this agreement. However, NRCS will provide advice and counsel as needed.
6. Review contract documents for the emergency watershed protection project.
7. Be available to conduct progress checks and participate in final inspections.
8. Review the Sponsor's records prior to final payment under this agreement.

C. It is mutually agreed that:

1. The contract for the work measures described in the DSRs will not be awarded to the Sponsor or to any firm in which any Sponsor official or any member of such official's immediate family has direct or indirect interest in the pecuniary profits or contracts of such firms.
2. This agreement may be amended as mutually agreed by written amendment duly executed by authorized officials of the signatory parties to this agreement.
3. This agreement may be temporarily suspended by NRCS if NRCS determines that corrective action by the Sponsor is needed to meet the provisions of this agreement. Further, NRCS may suspend this agreement when it is evident that a termination is pending.
4. NRCS may terminate this agreement in whole or in part if it is determined by NRCS that the Sponsor has failed to comply with any of the conditions of this agreement. NRCS shall promptly notify the Sponsor in writing of the determination and reasons for the termination, together with the effective date. Payments made by or recoveries made by NRCS under this termination shall be in accord with the legal rights and liabilities of NRCS and the Sponsor.

VIII. AMENDMENTS, CHANGES, AND TERMINATION

See General Terms and Conditions incorporated into the agreement as an attachment.

IX. APPROVAL

The United States Department of Agriculture, Natural Resources Conservation Service and the Sponsor execute this agreement as of the date of final signature by USDA/NRCS on NRCS-ADS-093 form, Notice of Grant and Agreement Award. The signatories represent that each is duly authorized to bind their respective organization to the terms of this agreement. By signing

the NRCS-ADS-093 form, the Sponsor assures USDA that the program or activities provided for under this agreement will be conducted in compliance with all applicable Federal civil rights laws, rules, regulations, and policies.

Financial and technical assistance on this project is summarized as follows:

		NRCS		Sponsor	
		Estimated Construction Cost	Financial Assistance, FA	Technical Assistance, TA	Local Contribution
DSR Numbers	(sites)				
Professional services		\$	\$	\$	\$
Sponsor's Administrative Costs				\$	
	Project Totals	\$	\$	\$	\$

COUNTY

By:

Title: _____

Date: _____

UNITED STATES DEPARTMENT OF AGRICULTURE
NATURAL RESOURCES CONSERVATION SERVICE

By: _____
(Signature)

Title: State Conservationist

Date: _____

NRCS Use Only

NRCS Funds Available:

Funds (FA) _____ BOC: _____ Fund: NR.AI.EWMP.55.50.XXF
Funds (TA) _____ BOC: _____ Fund: NR.AI.EWMP.55.50.XXT

Signature: _____
Financial Manager

Date: _____

FFMI Obligation Date: _____

Obligated By: _____

APPENDIX E: SAMPLE PRESS RELEASES

Date:

Contact:

Flood Damages to _____ County Still Being Estimated

As the floodwaters recede, damage estimates begin to roll in. The USDA Natural Resources Conservation Service is assisting local officials with damage assessments resulting from the storm which occurred on _____.

There has been an estimated _____ acres of cropland flooded in the county. The crop loss as well as livestock loss is being assessed.

There have been _____ streams affected by the high water. Debris and sediment has been washed into these areas causing further hazards to property from bridges and road culverts being severely damaged.

NRCS is working with the local government to identify projects that qualify for assistance under the Emergency Watershed Protection Program (EWP). The EWP program offers assistance to clean debris and sediment from streams, stabilize stream banks, clear debris from bridge abutments, and reseed damaged areas that present imminent danger to life and property from future rains.

NRCS will pay up to 75 percent of the cost. Local governments must sponsor the project and will be responsible to pay the remaining 25 percent. This can be done with cash or in-kind services.

For more information contact your local Natural Resources Conservation Service office. All programs and services of USDA NRCS are offered on a nondiscriminatory basis.

###

The U.S. Department of Agriculture (USDA) prohibits discrimination in all its programs and activities on the basis of race, color, national origin, sex, religion, age, disability, political beliefs, sexual orientation, and marital or family status. (Not all bases apply to all programs.) Persons with disabilities who require alternative means for communication of program information (Braille, large print, audiotape, etc.) should contact USDA's TARGET Center at 202-720-2600 (voice and TDD). To file a complaint of discrimination, write USDA, Director, Office of Civil Rights, Room 326W, Whitten Building, 14th & Independence Avenue, Southwest, Washington, DC 20250-9410 or call (202) 720-5964 (voice or TDD). USDA is an equal opportunity provider and employer.

Date:
Contact:

County Receives Emergency Watershed Protection Assistance

The USDA Natural Resources Conservation Service today announced Emergency Watershed Protection projects in _____ County. Work will begin (*insert date*) on the _____ and _____ streams. Local officials have signed agreements to provide the 25 percent cost-share required for these projects. They should be completed by _____.

_____, District Conservationist in _____ County said flood damage to streams from the (*insert date*) storm was considerable, leaving debris and sediment that could plug bridge abutments in future rains. The EWP program contracts will clear these areas and stabilize stream banks to prevent further damage. He (she) added that USDA is providing the financial and technical help to carry out these projects through the Emergency Watershed Protection (EWP) Program which is administered by NRCS.

There are ___ projects scheduled throughout the county. All the projects must be completed within 60 days of the contracts. For more information contact your local NRCS office. All programs and services of the USDA NRCS are offered on a nondiscriminatory basis.

###

The U.S. Department of Agriculture (USDA) prohibits discrimination in all its programs and activities on the basis of race, color, national origin, sex, religion, age, disability, political beliefs, sexual orientation, and marital or family status. (Not all bases apply to all programs.) Persons with disabilities who require alternative means for communication of program information (Braille, large print, audiotape, etc.) should contact USDA's TARGET Center at 202-720-2600 (voice and TDD). To file a complaint of discrimination, write USDA, Director, Office of Civil Rights, Room 326W, Whitten Building, 14th & Independence Avenue, Southwest, Washington, DC 20250-9410 or call (202) 720-5964 (voice or TDD). USDA is an equal opportunity provider and employer.

Date:

Contact:

NRCS Assists with Local Flood Disaster

The USDA Natural Resources Conservation Service (NRCS) is working with local governments to assess flood damaged areas. The role of NRCS is to provide assistance to local governments to remove the imminent hazards to life and property caused by flooding and erosion. NRCS administers the Emergency Watershed Protection (EWP) Program which is designed for this very purpose.

There are two types of assistance available through EWP- Exigency and Nonexigency. Exigency provides immediate action when there is a clear threat to life and property. In these extreme cases, NRCS can pay up to 75 percent of the costs for clearing debris from streams and stabilizing stream banks to prevent further damage. Nonexigency is a situation where damage to life and property is high enough for an emergency, but not as immediate. NRCS will also pay 75 percent of the cost for this work.

All projects must be sponsored by a local unit of government which is responsible for the remaining 25 percent cost. This may be direct cash expenditures by the Sponsor or the value of in-kind materials and/or construction services. Construction services include costs associated with materials, equipment, and labor. EWP include:

- Debris removal from stream channels, road culverts, bridge abutments
- Reshaping and protecting eroding stream banks
- Repair of damaged drainage facilities
- Repair of levees and dikes
- Reseeding of damaged areas

As these areas are selected for the EWP projects, removal of hazardous conditions will begin. NRCS will assess flood damaged areas to determine if they are eligible for assistance. All applications for assistance must be submitted within 60 days of the disaster.

If there are questions about the program, landowners should contact their local Natural Resources Conservation Service office. Local officials can apply for assistance through their local NRCS office in the form of a letter giving nature, location and scope of the problem.

#

The U.S. Department of Agriculture (USDA) prohibits discrimination in all its programs and activities on the basis of race, color, national origin, sex, religion, age, disability, political beliefs, sexual orientation, and marital or family status. (Not all bases apply to all programs.) Persons with disabilities who require alternative means for communication of program information (Braille, large print, audiotape, etc.) should contact USDA's TARGET Center at 202-720-2600 (voice and TDD). To file a complaint of discrimination, write USDA, Director, Office of Civil Rights, Room 326W, Whitten Building, 14 & Independence Avenue, Southwest, Washington, DC 20250-9410 or call (202) 720-5964 (voice or TDD). USDA is an equal opportunity provider and employer.