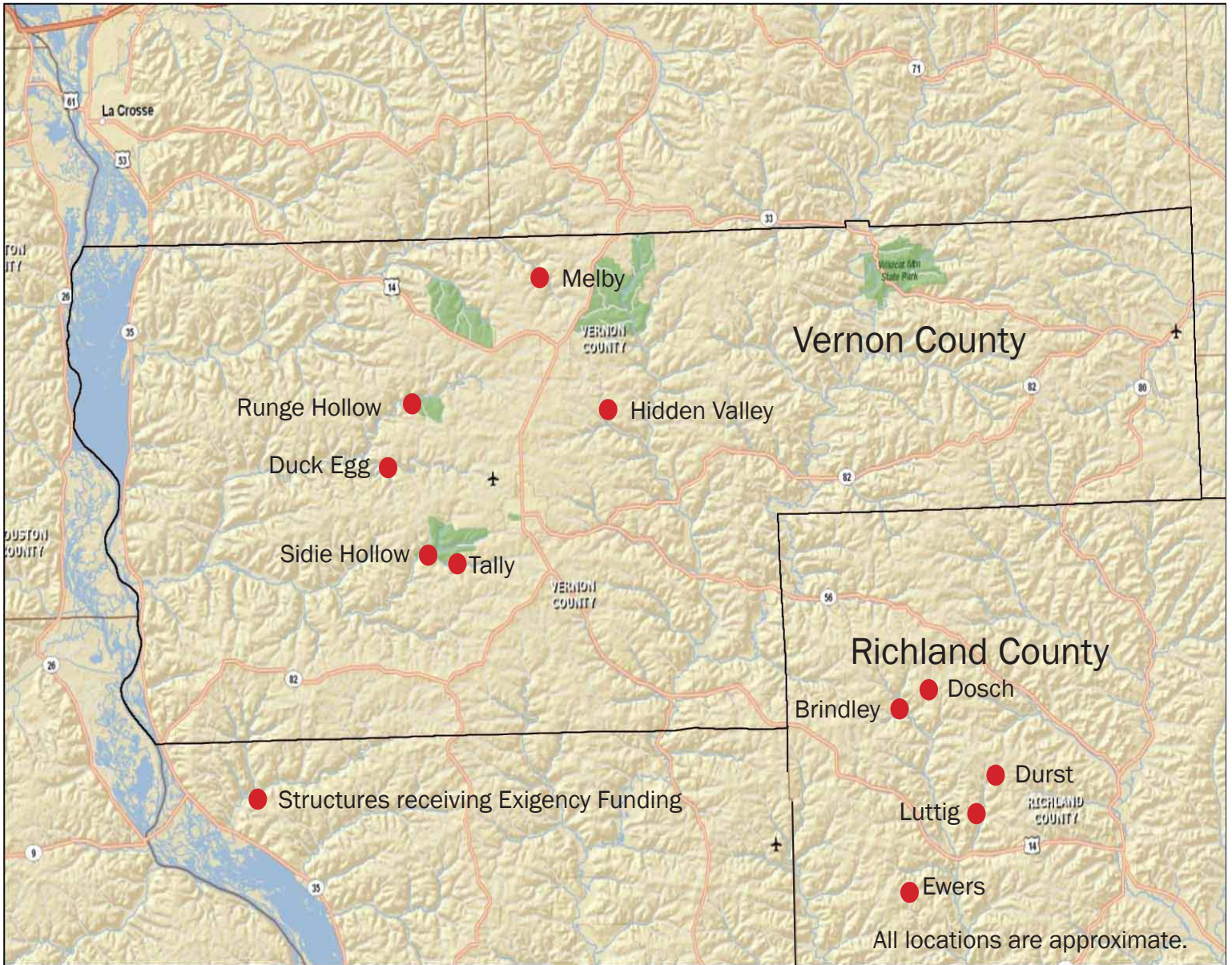


PL-566 Exigency Structure Report
Vernon and Richland Counties, Wisconsin



Location Map



Runge Hollow Bad Axe 12 - Vernon County

Issues: Partial failure of auxiliary spillway

Final Construction Cost: \$65,803

Protective Actions and Updates: Stabilized overfall on auxiliary spillway.

Exigency Repairs Completed 9/07.

Future needs: Complete reconstruction of the auxiliary spillway



August 2007 during initial assessment.



September 2007 during repair. Re-established spillway area and concrete grouted the rock overfall area.



August 2007 during initial assessment.



September 2007 during repair. Redirected water to the overfall area.

Hidden Valley West Fork Kickapoo 4 - Vernon County

Issues: Auxiliary spillway failure

Final Construction Cost: \$73,017

Protective Actions and Updates: Repaired auxiliary spillway.

Exigency Repairs Completed 9/07.

Future Needs: Seepage through left abutment - needs investigation.



August 2007 during initial assessment.



September 2007. Spillway stabilized, regraded and seeded. Looking upstream along spillway.



August 2007 during initial assessment.



September 2007. Spillway stabilized, regraded and seeded. Looking downstream along spillway.

Melby

Coon Creek 17 - Vernon County

Issues: Stilling basin eroded and caused slope slide.

Final Construction Cost: \$33,958

Protective Actions and Updates: Stabilized roadside slope slide into stilling basin.

Exigency Repairs Completed 9/07.

No further action needed.



August 2007 during initial assessment.



September 2007. Slope stabilized and new riprap added on roadside slope.



August 2007 during initial assessment.



September 2007. Slope stabilized and new riprap added on roadside slope.

Issues: Concrete chute jump - rock displacement

Final Construction Cost: \$67,704

Protective Actions and Updates: Stabilized concrete chute outlet.

Exigency Repairs Completed 9/07

No further action needed.

Duck Egg

Bad Axe 11 - Vernon County



August 2007 during initial assessment.



September 2007. Placing flowable fill into void under concrete chute.



September 2007. Replaced riprap at the bottom of the concrete chute.

Bad Axe

Vernon County

Two Structures in the Bad Axe Watershed
Issues: During storm events principal inlets became blocked, risking future damage to structures.
Final Cost: \$4,600 total for both structures.
Protective Actions and Updates: Emergency debris removal completed 8/07.
No further action needed.

Mill Creek

Richland County

Five Structures in the Mill Creek Watershed
Issues: During storm events principal inlets became blocked, risking future damage to structures.
Exigency Cost: \$1,700 total for all five structures.
Protective Actions and Updates: Emergency debris removal completed 8/07.
No further action needed.

Summary of Costs associated with EWP Activity August 2007

Vernon County			
Structure	Final Construction Cost	NRCS cost	County Cost
Runge Hollow	\$65,803	\$49,352	\$16,451
Hidden Valley	\$73,017	\$54,763	\$18,254
Melby	\$33,958	\$25,469	\$8,489
Duck Egg	\$67,704	\$50,778	\$16,926
2 structures - debris removal only	\$4,600	\$3,450	\$1,150
Sidie Hollow Dam			
Tally Dam			
Richland County			
5 structures - debris removal only	\$1,700	\$1,275	\$425
Dosch Dam			
Luttig Dam			
Durst Dam			
Brindley Dam	-		
Ewers Dam			
Total Costs	\$246,782	\$185,087	\$61,695