

RECLAMATION

Managing Water in the West



**Navajo Unit Operations
April 20, 2011
Coordination Meeting**



U.S. Department of the Interior
Bureau of Reclamation

Agenda

- Welcome
- Special Presentation – Colorado River Basin 24-mo Study
- Review of Water Year 2011 Operations (to date)
- Water Year 2011 Current Conditions/Snowpack
- Water Year 2011 Forecasts & Proposed Operations
- Modeled Results of Operation Plan
- Nearby Projects Update
- Navajo Dam Maintenance Activities
- Fish & Wildlife Service/San Juan RIP Update
- Reports from other Agencies
- Questions from Audience
- How To Access Information
- Close

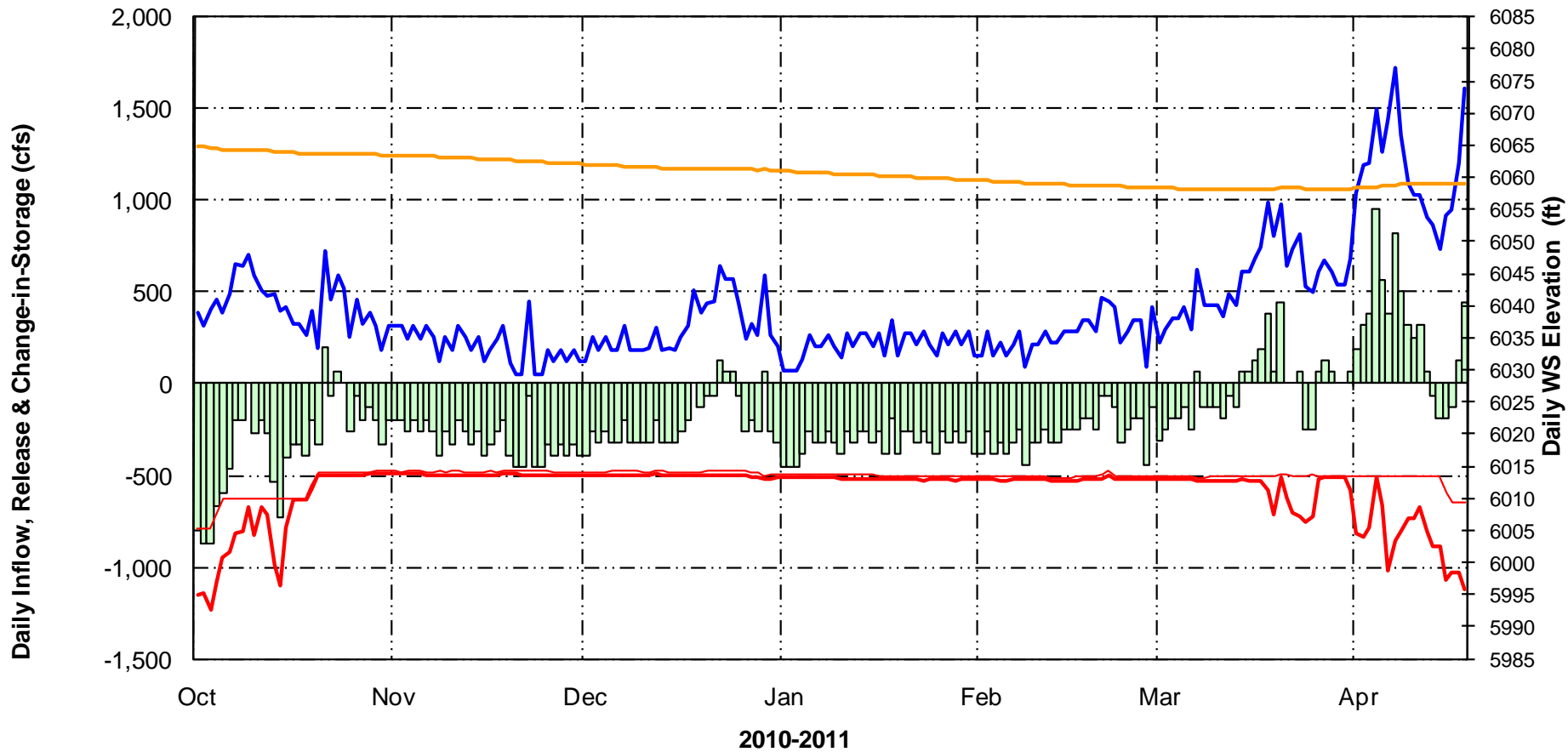
RECLAMATION

An aerial photograph of a large concrete dam and reservoir. The reservoir is filled with greenish water, and the surrounding landscape is arid with sparse vegetation. A road curves along the right side of the dam. The text "Review of Water Year 2011 Operations to date" is overlaid in large, white, bold letters with a black outline.

Review of Water Year 2011 Operations to date

RECLAMATION

NAVAJO RESERVOIR OPERATIONS



Navajo Current Conditions

(as of 4/18/11)

Elevation = 6059.1 (99% of Average)

Storage = 1,336,156 af (79% Full)

Inflow = 1611 cfs

Release = 500 cfs

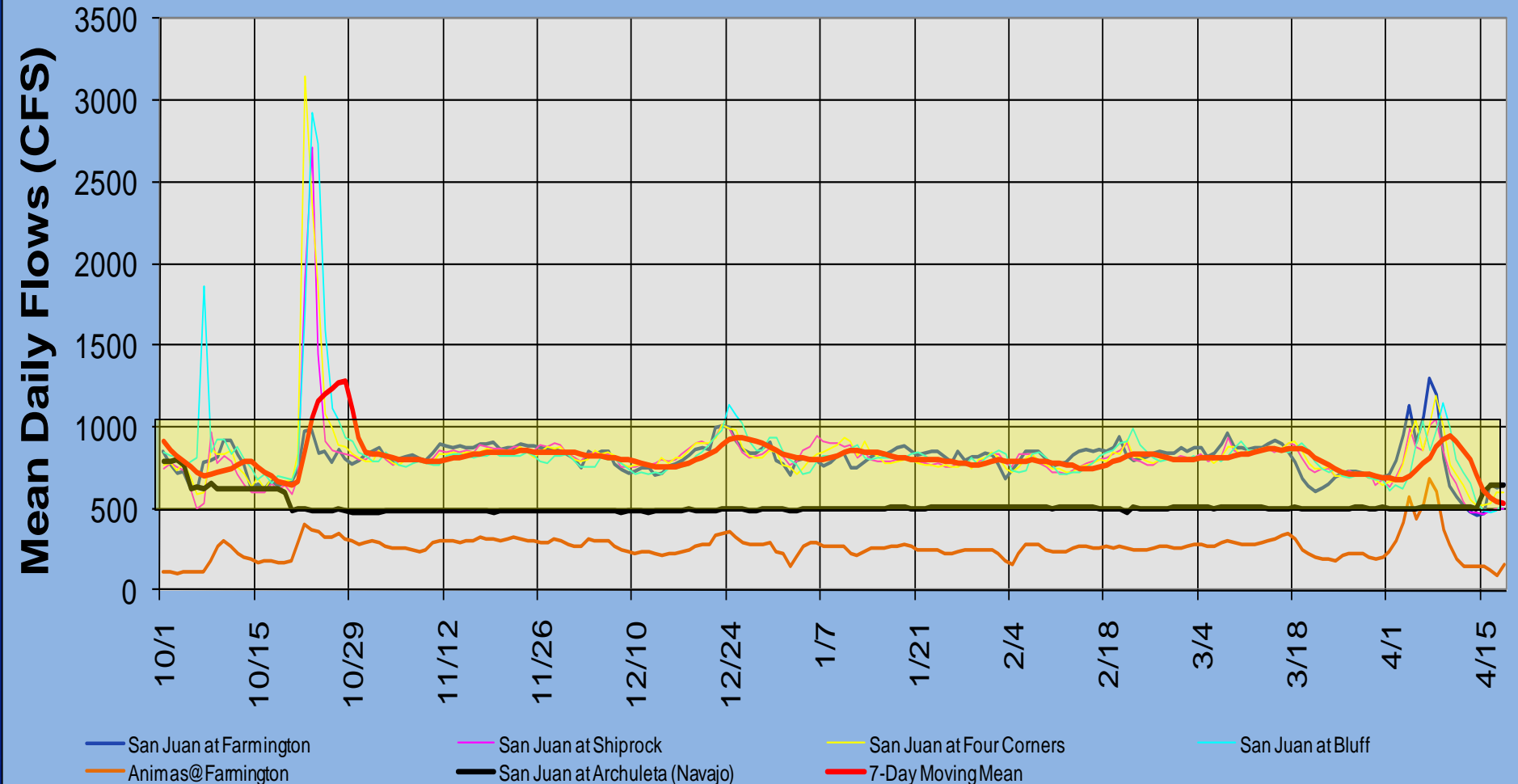
NIIP = 480 cfs

SJ-Chama Diversion = 385 cfs

RECLAMATION

Downstream Flows

USGS Mean Daily Streamflows - San Juan and Animas River Stations





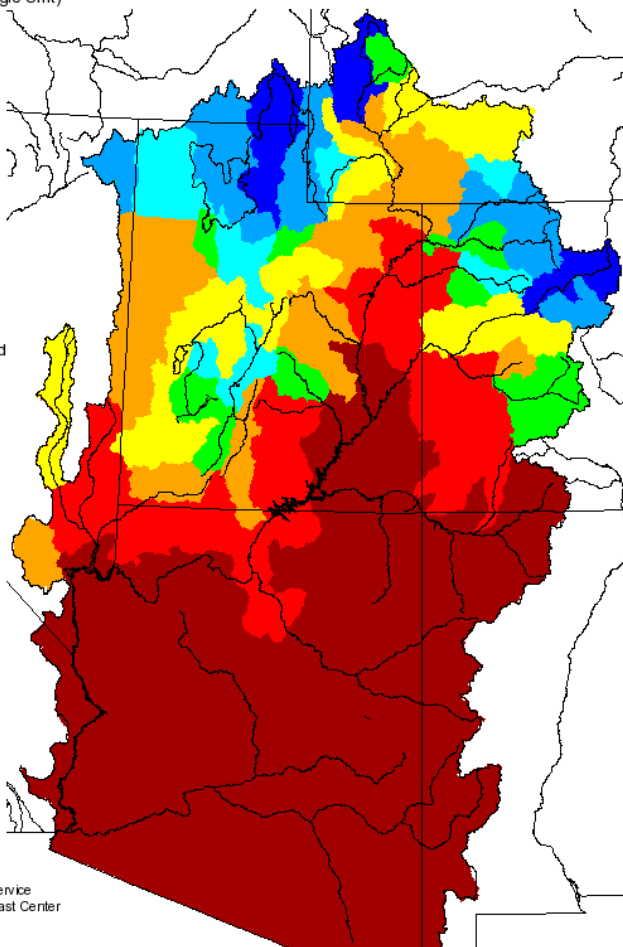
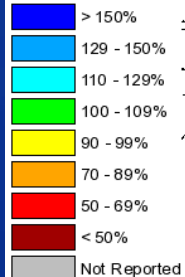
Water Year 2011

Hydrologic Conditions

Monthly Precipitation for March 2011

(Averaged by Hydrologic Unit)

% Average

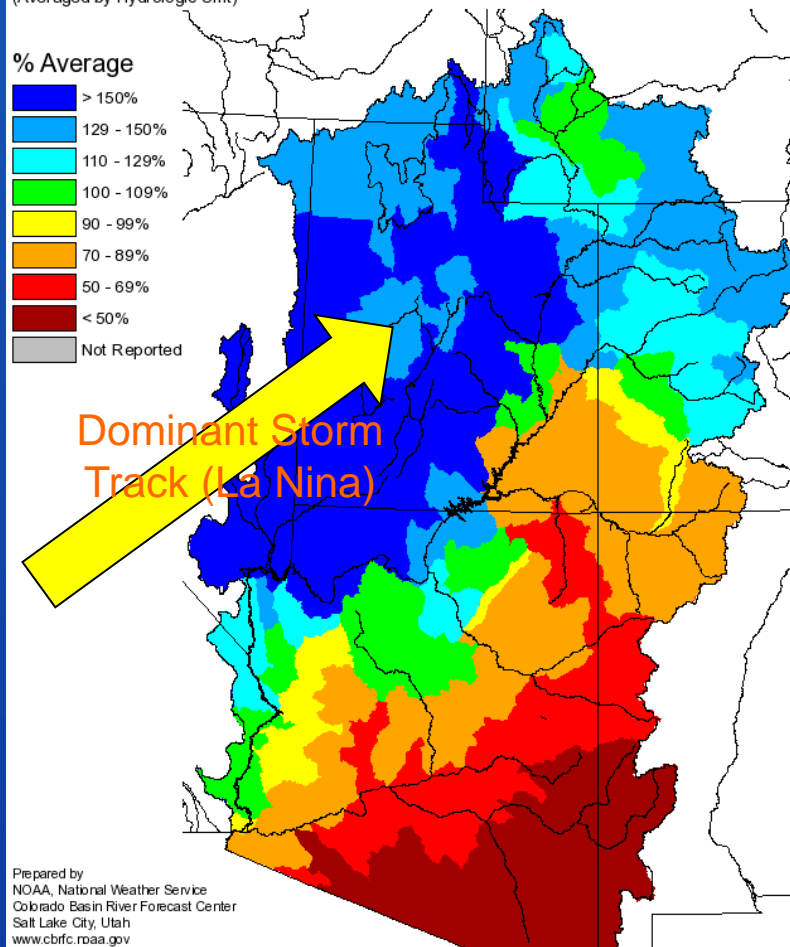
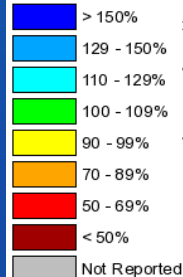


Prepared by
NOAA, National Weather Service
Colorado Basin River Forecast Center
Salt Lake City, Utah
www.cbifc.noaa.gov

Seasonal Precipitation, October 2010 - March 2011

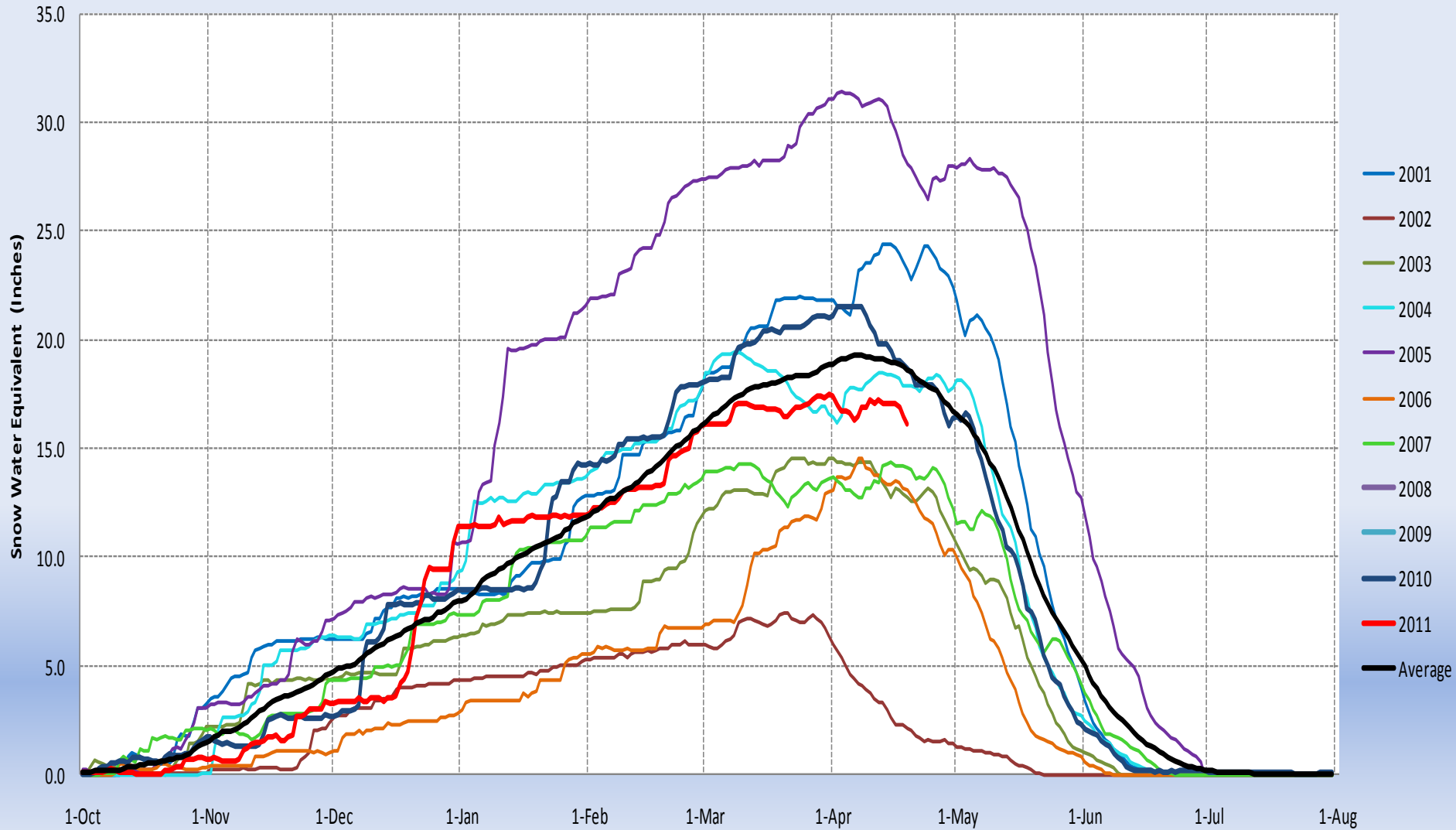
(Averaged by Hydrologic Unit)

% Average



Prepared by
NOAA, National Weather Service
Colorado Basin River Forecast Center
Salt Lake City, Utah
www.cbifc.noaa.gov

Navajo Reservoir SNOTEL SWE from 2001-2011



(as of 4/19/2011)

RECLAMATION

Water Year 2011 (as of 4/19/2011)

Navajo Inflows & Snowpack above Navajo

EOM	Inflow (af)	% Average	Navajo SWE (in.)	% Average
October	26,460	52%	0.7	47%
November	12,096	37%	3.3	72%
December	18,987	78%	11.4	143%
January	13,096	63%	11.9	101%
February	15,094	50%	16.0	100%
March	34,577	38%	17.5	93%
April (Current Forecast)	67,562	47%	16.1	86%

An aerial photograph of a river valley. The river flows from the top center towards the bottom left. The left bank is lush with green trees and fields, while the right bank is a steep, arid hillside with sparse vegetation. The sky is not visible.

Water Year 2011 Forecasts

RECLAMATION

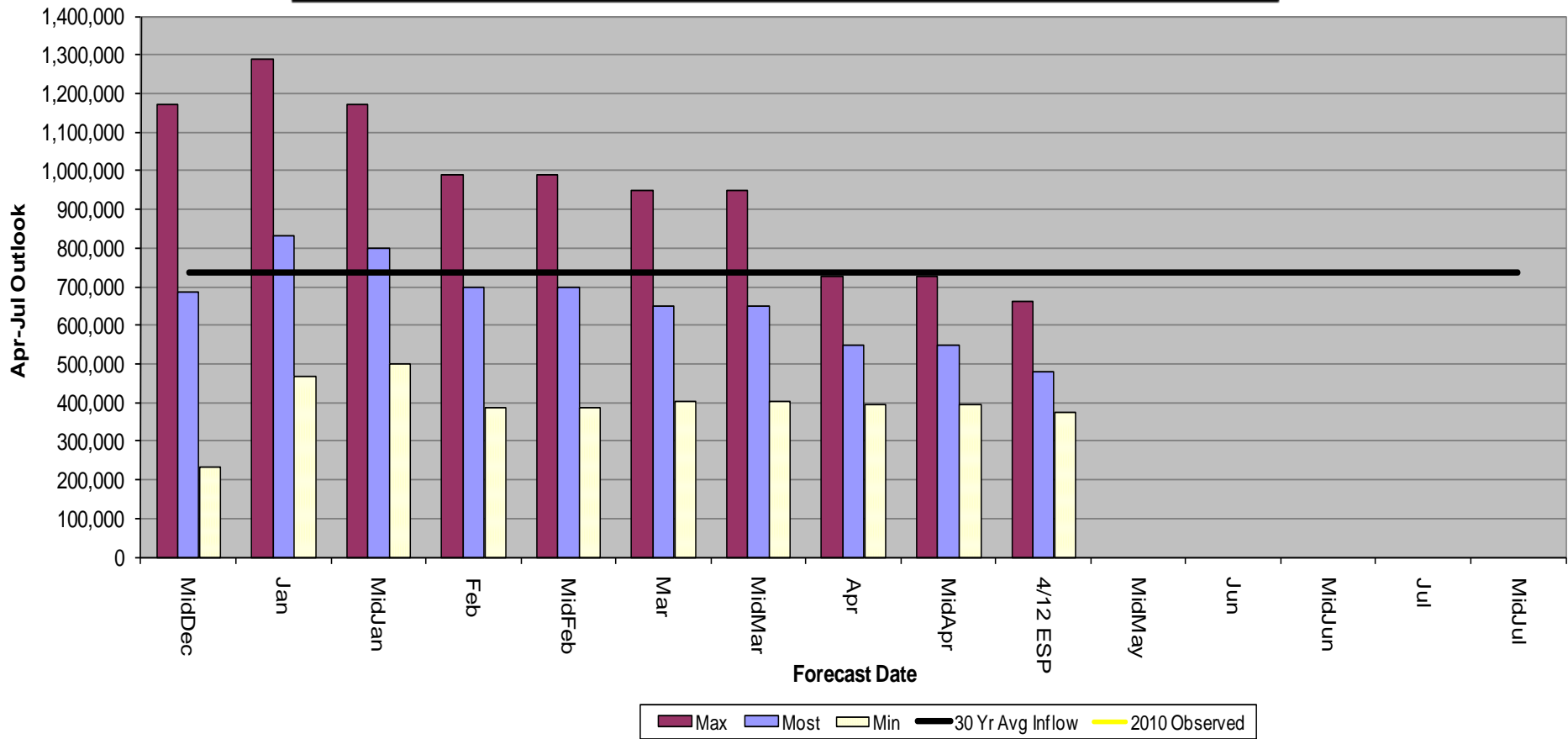
Mid-April 2011 Forecast Navajo Reservoir Mod Unregulated April-July Inflow Volume

	Inflow (af)	% of Average	2010 Forecast
Most Probable	550,000 (ESP=480,000)	75% (65%)	635,000 (84%)
Minimum Probable	395,000 (ESP=375,000)	54% (51%)	450,000 (60%)
Maximum Probable	725,000 (ESP=660,000)	98% (90%)	865,000 (114%)

2010 Actual = 652,000 acre-feet

NOTE: Colorado Basin RFC ESP Model Run Date was 4/12/2011

WY2011 CBRFC - Navajo Reservoir Most, Max and Min Inflow Forecasts (acre-feet)

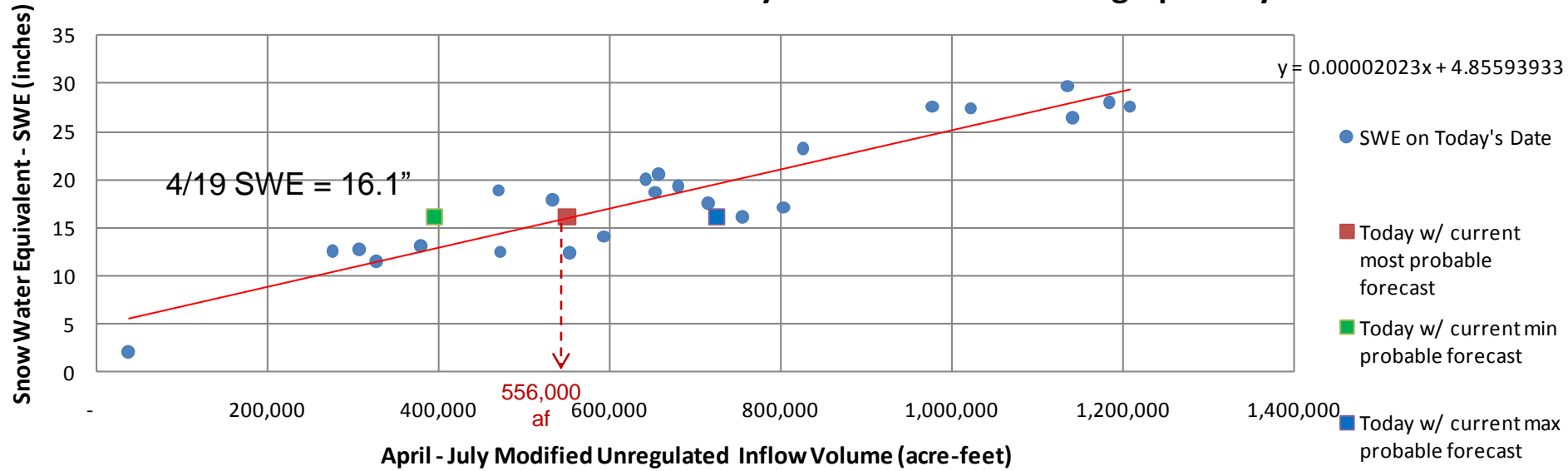


Comparing the current snowpack to year's past & the resultant April-July inflow observed:

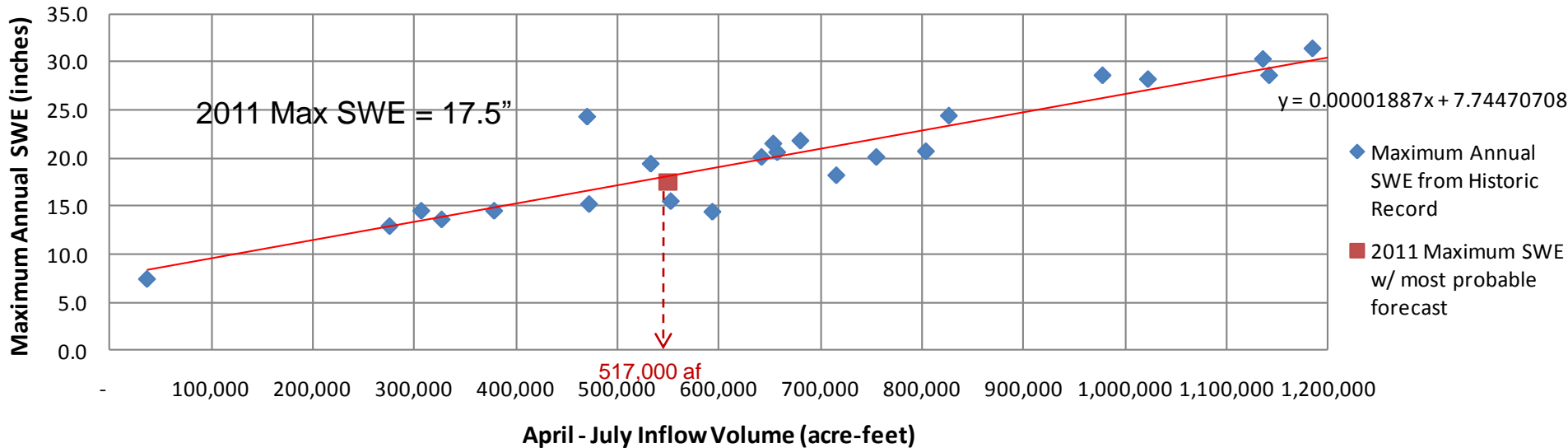
86%	2002	1990	2000	1996	1988	2003	2006	2007	1999	Current
		2.1	12.4	11.5	12.6	12.5	12.7	13.1	14.1	16.1
Percentile of Historical Record	0%	8%	4%	17%	13%	21%	25%	29%	33%	33%
Rank (Wettest)	25	23	24	21	22	20	19	18	16	16
Rank (Driest)	1	3	2	5	4	6	7	8	10	10
Modified Unregulated April-July Inflow	36,741	552,470	326,843	275,589	472,055	306,809	378,589	593,479	754,853	550,000
Total April-July Mod Unreg Inflow on this Date	26,548	42,512	78,496	37,832	81,060	36,848	62,790	75,795	51,087	41,702
Total April-July Mod Unreg Inflow Remaining	10,193	509,959	248,348	237,757	390,995	269,961	315,799	517,684	703,766	508,298
Observed as a percent of April-July Total	72%	8%	24%	14%	17%	12%	17%	13%	7%	8%

1992	2004	1994	2010	1989	1991	1998	2009	2001	1995	2008	1987	1997	2005	1993
17.1	17.9	17.6	18.7	18.9	19.3	20.1	20.6	23.2	26.4	27.6	27.6	27.4	28.1	29.7
42%	50%	46%	54%	58%	63%	67%	71%	75%	79%	88%	88%	83%	96%	100%
15	13	14	12	11	10	9	8	7	6	3	3	5	2	1
11	13	12	14	15	16	17	18	19	20	23	23	21	24	25
803,651	532,747	715,458	653,418	470,125	680,093	641,825	657,267	826,273	1,141,609	977,548	1,208,662	1,022,287	1,184,293	1,135,466
137,618	109,428	68,219	126,774	119,410	132,782	63,826	49,947	88,012	89,880	138,536	162,685	77,388	163,701	146,173
666,033	423,319	647,239	526,643	350,714	547,311	577,999	607,320	738,261	1,051,729	839,012	1,045,977	944,899	1,020,592	989,294
17%	21%	10%	19%	25%	20%	10%	8%	11%	8%	14%	13%	8%	14%	13%

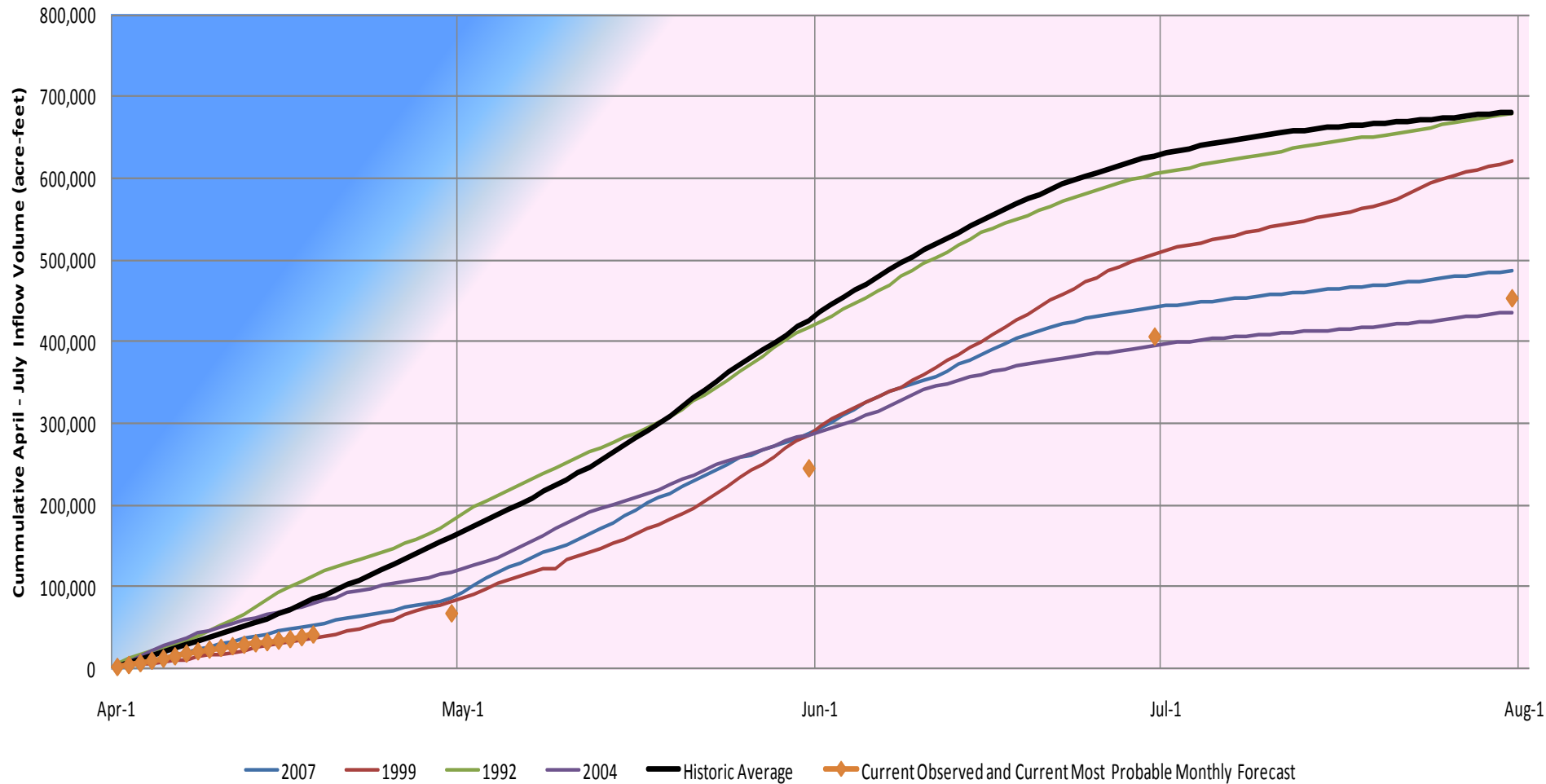
Correlation of Historical SWE from Today's Date and Mod Unreg April-July Inflow



Historical April-July Inflows compared to Maximum Annual SWE



Cummulative April - July Observed Inflow of Representative SWE Years



Looking Ahead to Summer/Fall

EOM	Forecasted Most Probable Mod Unreg Inflow (af)	% Average	Predicted Observed Inflow (af)	% Average
April	100,000	59%	67,562	47%
May	235,000	85%	177,070	82%
June	188,000	84%	160,786	88%
July	27,000	41%	46,819	63%
August*	25,009	56%	48,331	78%
September*	33,383	77%	45,996	86%

*Modified unregulated inflow forecasts are not adjusted for upstream regulation (such as Vallecito and San Juan-Chama Project)

**August & September volumes are based on a linear regression between July and 100% of Average for October.

RECLAMATION

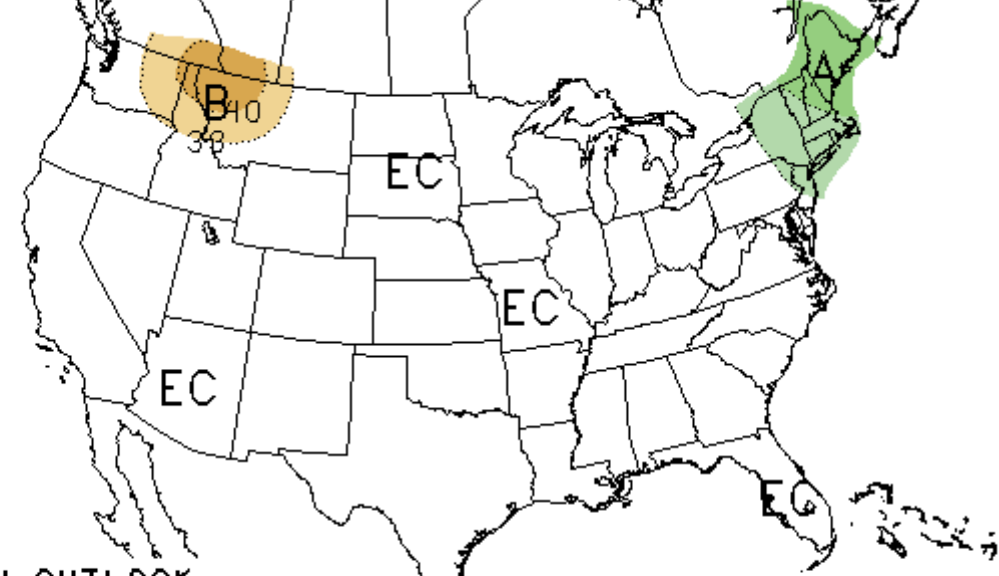
Climate Prediction Center Seasonal Precipitation Outlooks

May-June-July



THREE-MONTH OUTLOOK
PRECIPITATION PROBABILITY
1.5 MONTH LEAD
VALID MJJ 2011
MADE 17 MAR 2011

EC MEANS EQUAL
CHANCES FOR A, N, B
A MEANS ABOVE
N MEANS NORMAL
B MEANS BELOW

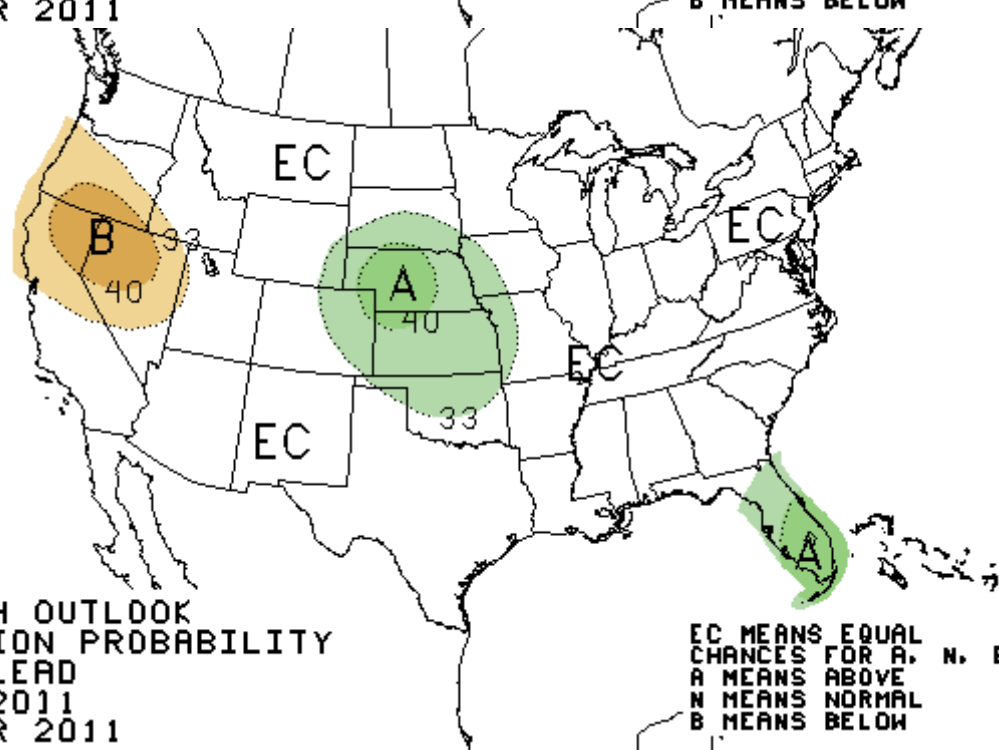


August-September-October



THREE-MONTH OUTLOOK
PRECIPITATION PROBABILITY
4.5 MONTH LEAD
VALID ASO 2011
MADE 17 MAR 2011

EC MEANS EQUAL
CHANCES FOR A, N, B
A MEANS ABOVE
N MEANS NORMAL
B MEANS BELOW



El Niño/La Niña Status?



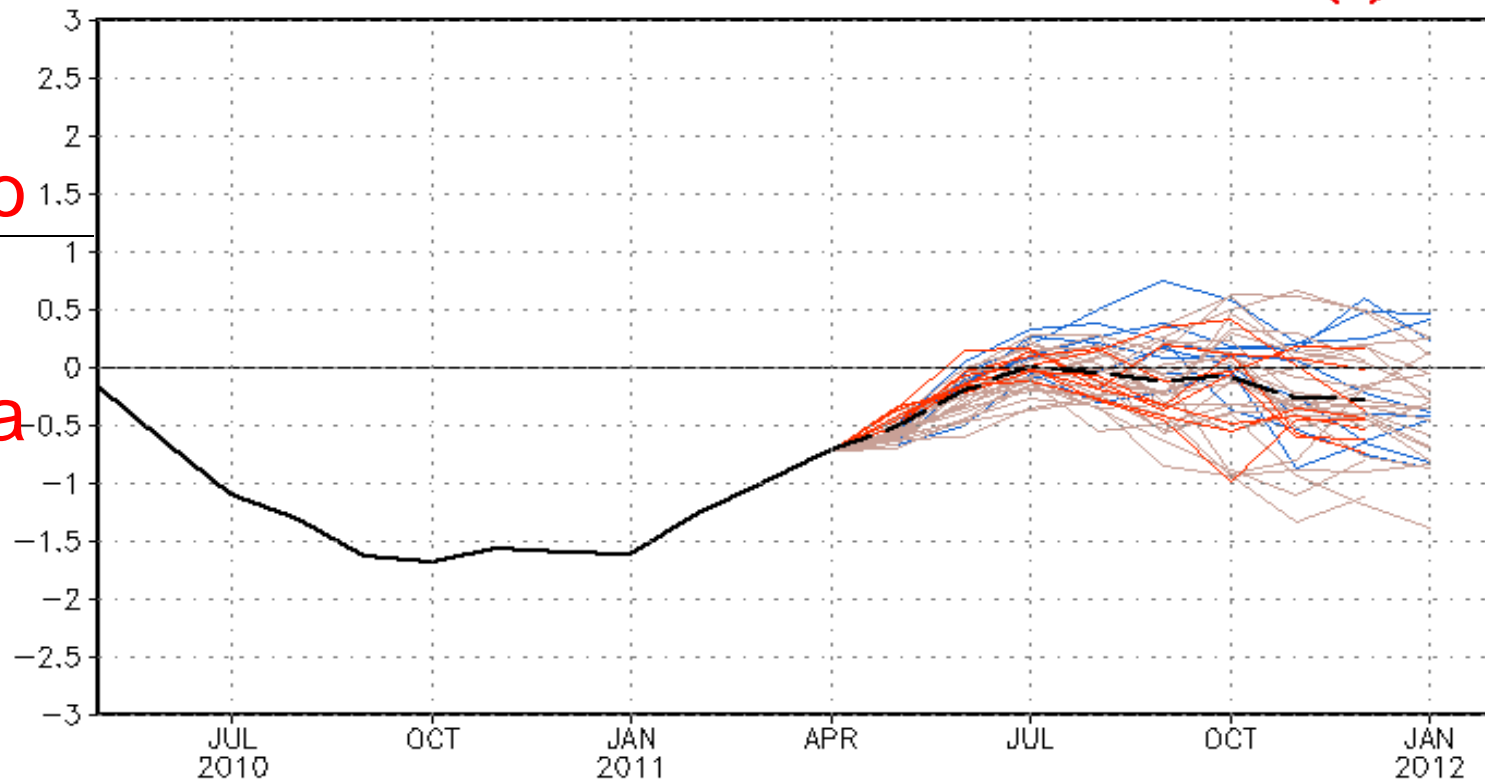
NWS/NCEP/CPC

Last update: Tue Apr 19 2011
Initial conditions: 29Mar2011-7Apr2011

PDF corrected CFS forecast Nino3.4 SST anomalies (K)

El Niño

La Niña



— Latest 8 forecast members
— Earliest 8 forecast members
— Other forecast members

— Forecast ensemble mean
— NCEP Olv2 weekly analysis

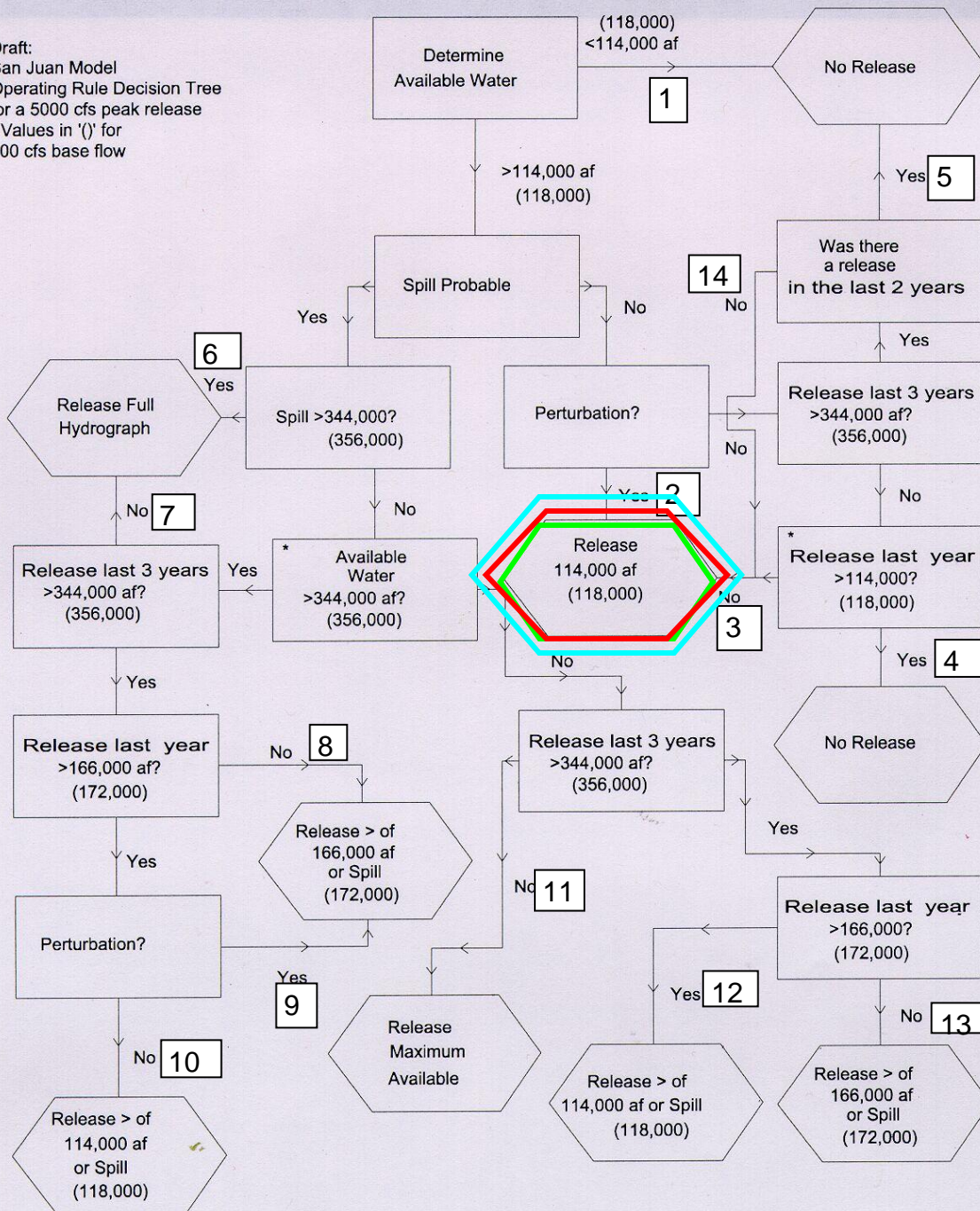
An aerial photograph of a large dam structure with water cascading over its spillways. The dam is situated in a valley with a reservoir behind it and a river or stream in front. The surrounding landscape is a mix of green vegetation and brownish, arid-looking terrain. The text 'Water Year 2011 Operations' is superimposed in the center of the image in a large, white, bold font with a black outline.

Water Year 2011 Operations

Spring Peak Release 2011 – How Much?

- Based on the most probable forecasts and current reservoir storage, San Juan RIP Flow Recommendations call for a 1-week Spring Peak Release this year (7 days @ 5000 cfs w/ week-long ramp up/down)
- 500 cfs base release is anticipated until beginning of ramp up and after ramp down
- Inflow forecast would need to drop below ~140,000 af to eliminate SPR (not likely)
- Inflow forecast would need to increase to ~680,000 af to increase to 2-week SPR

Draft:
 San Juan Model
 Operating Rule Decision Tree
 for a 5000 cfs peak release
 - Values in '()' for
 500 cfs base flow



AVAILABLE WATER	PATH
Min Prob: 376,960 af	#2
Most Prob: 500,429 af	#2
Max Prob: 643,061 af	#2

Spring Peak Release 2011 – When?

(Factors that must be considered)

Goal: To match the peak on the Animas River to provide maximum habitat benefit in the critical habitat area of the San Juan River

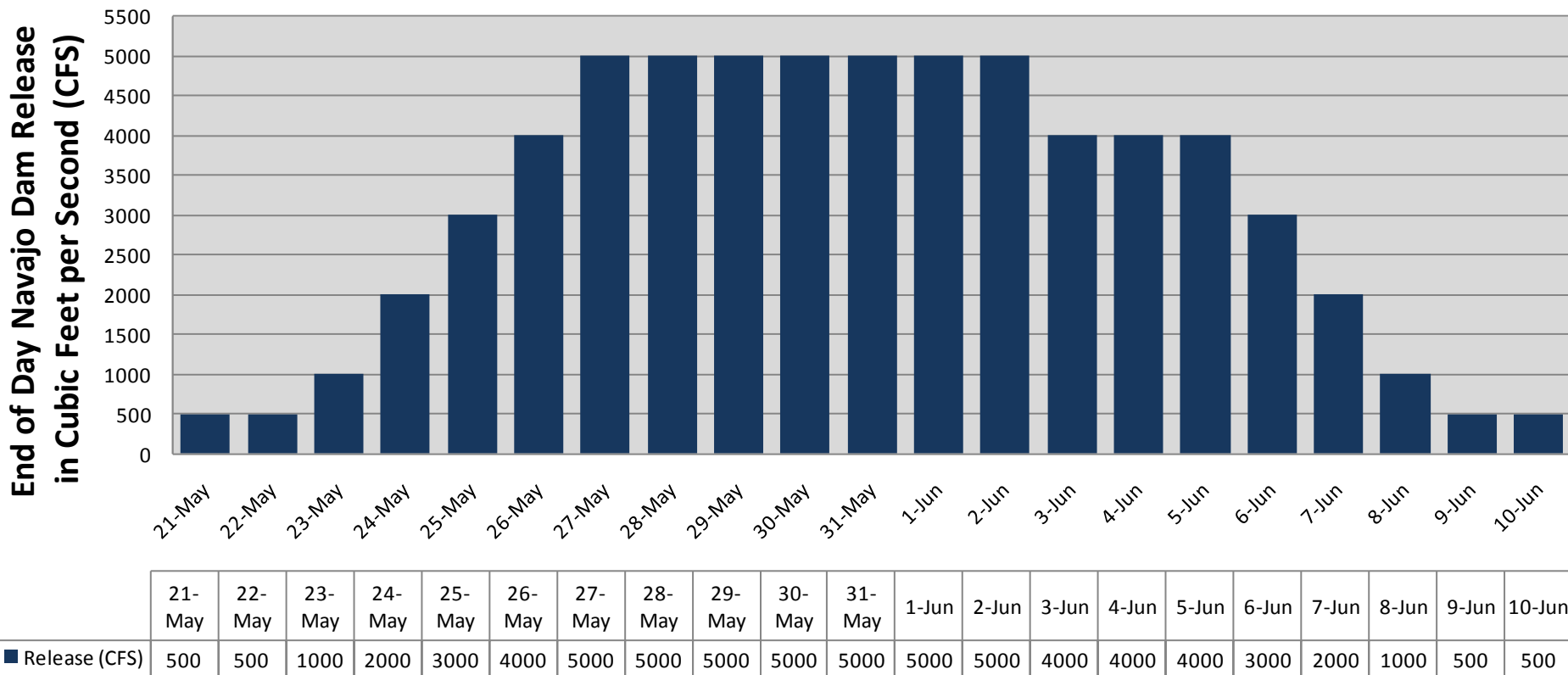
- Historical Peak used in Flow Recommendations is June 4th
- Average Peak over the last 10 years (2000-2010) is May 25th
- CBRFC Animas at Farmington Peak Flow Forecast date is May 31st

Constraints:

- Adjustments cannot be made on weekends or holidays
- Maximum change of 200 cfs or 10% every 2 hours (~1000 cfs/day)

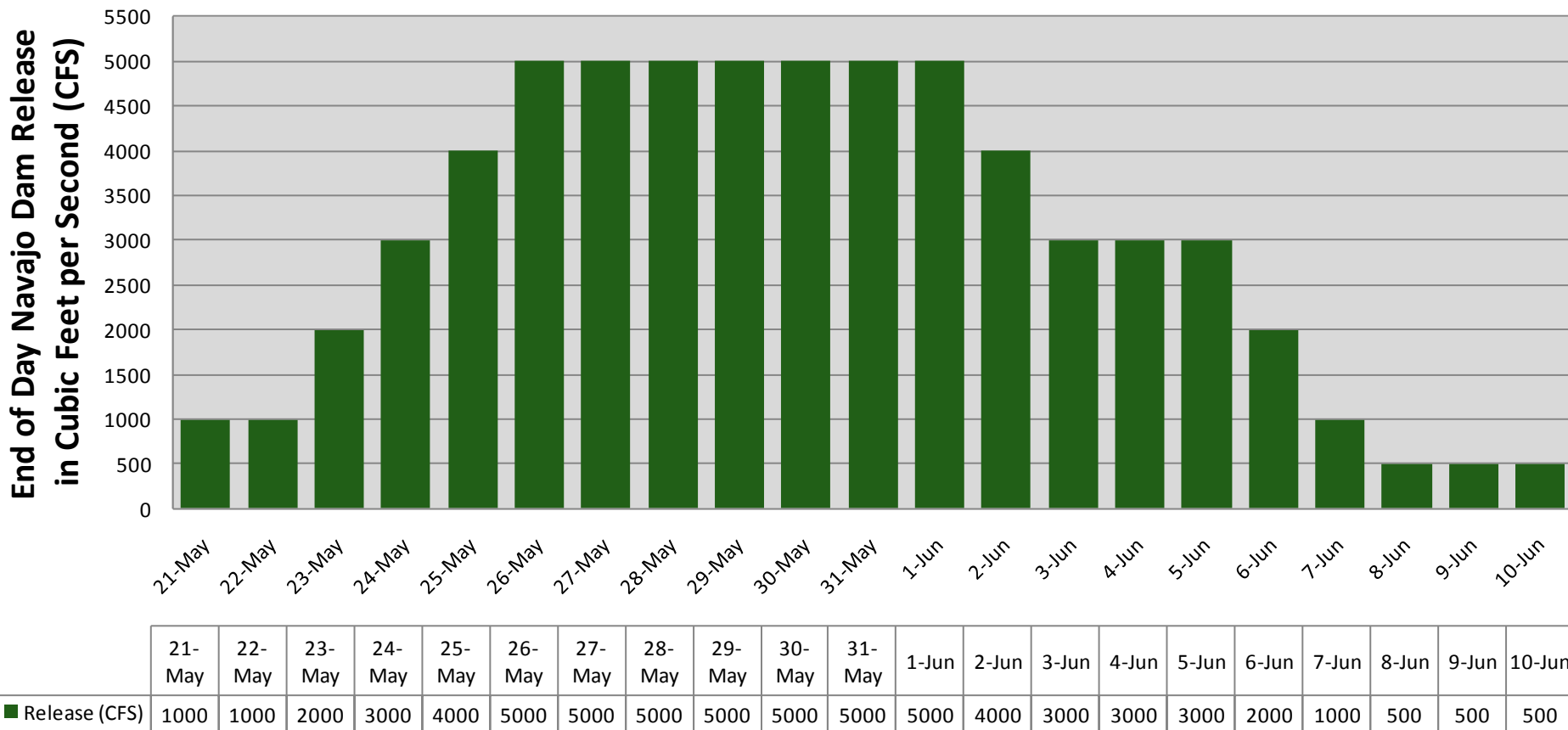
RECLAMATION

Navajo Reservoir 2011 Spring Peak Release Schedule (as of 4/19/2011)



Total Release over 500 cfs base =
108,100 acre-feet

Alternative Navajo Reservoir 2011 Spring Peak Release Schedule (as of 4/19/2011)



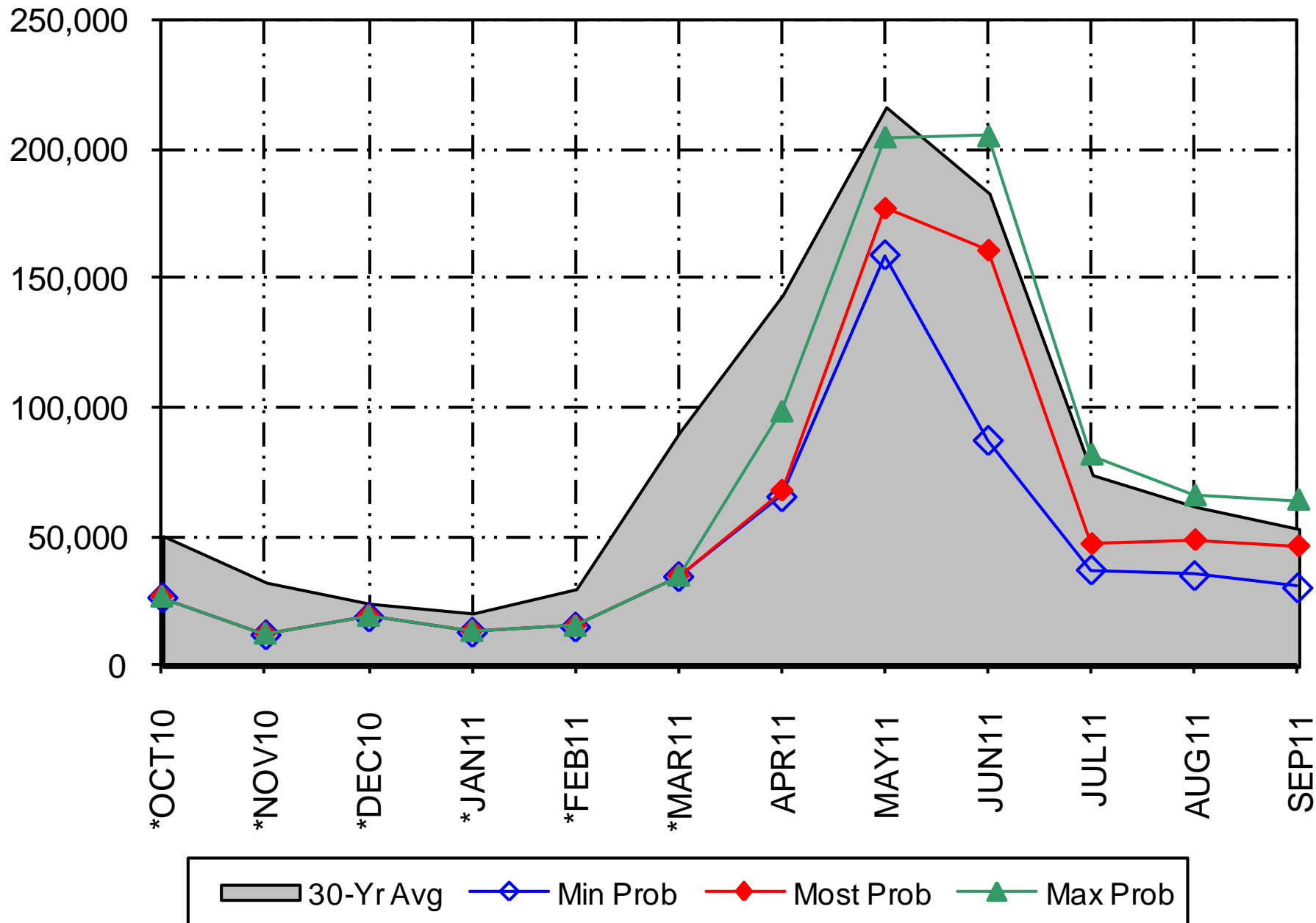
Total Release over 500 cfs base =
106,100 acre-feet

An aerial photograph of a river winding through a valley. The river is a light greenish-brown color and flows from the upper left towards the lower right. The valley floor is covered with green trees and shrubs. Above the river, a paved road runs horizontally across the frame. The surrounding hills are rocky and sparsely vegetated. At the bottom of the image, there is a solid blue banner with the word 'RECLAMATION' in gold, serif capital letters.

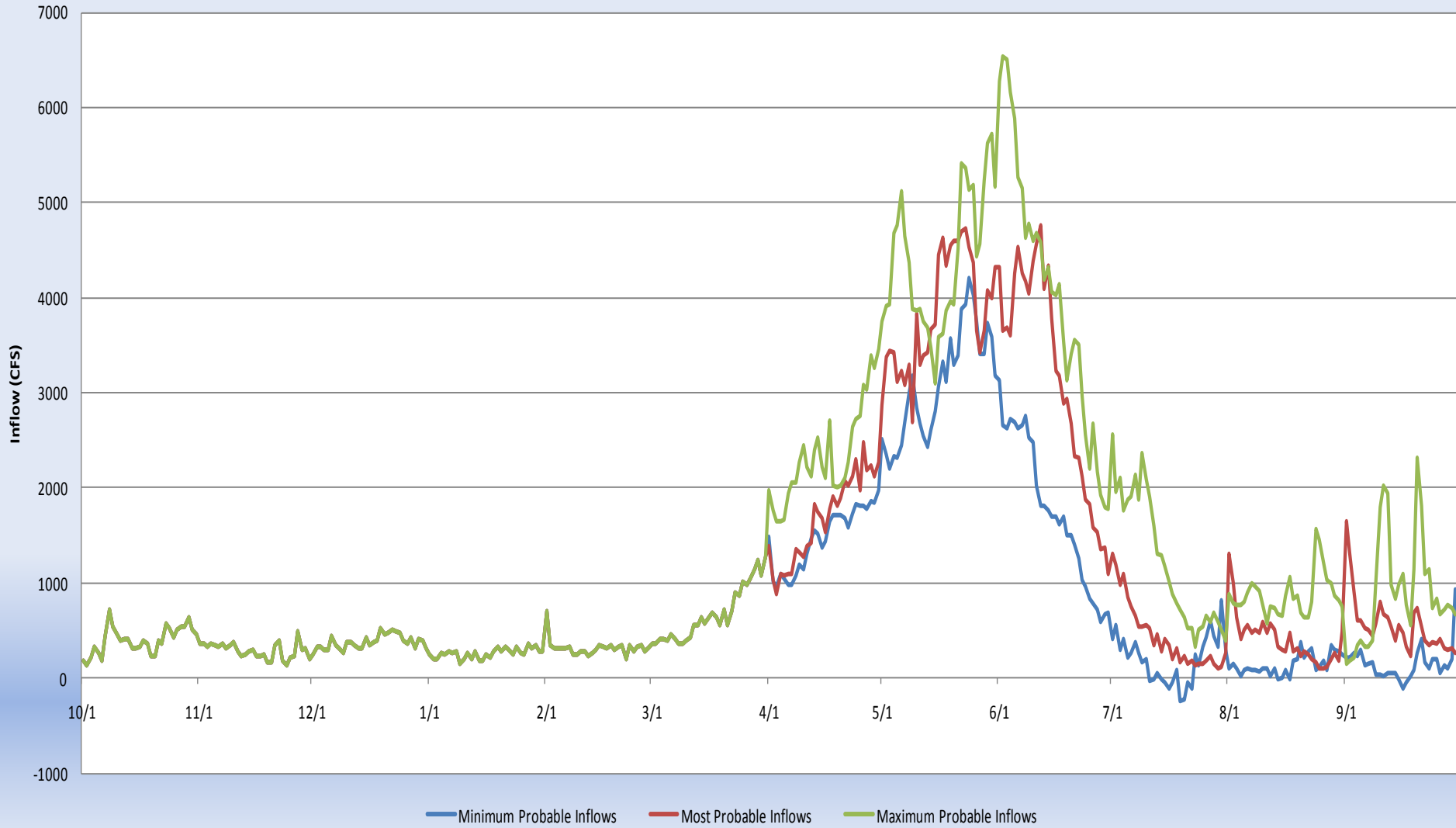
Modeled Results Of Operation Plan

RECLAMATION

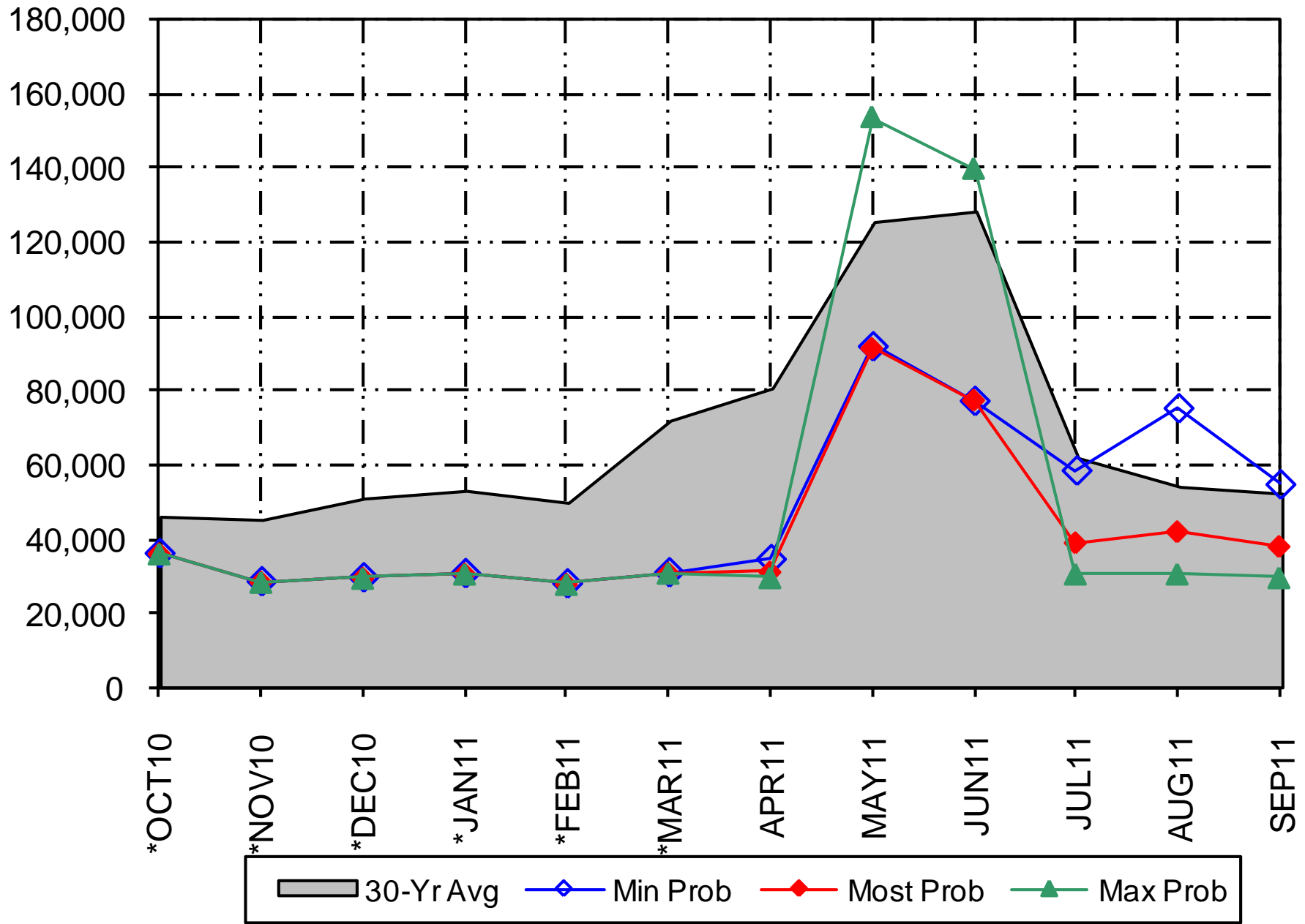
Inflow (af) as of April 2011 Mid Month Forecast



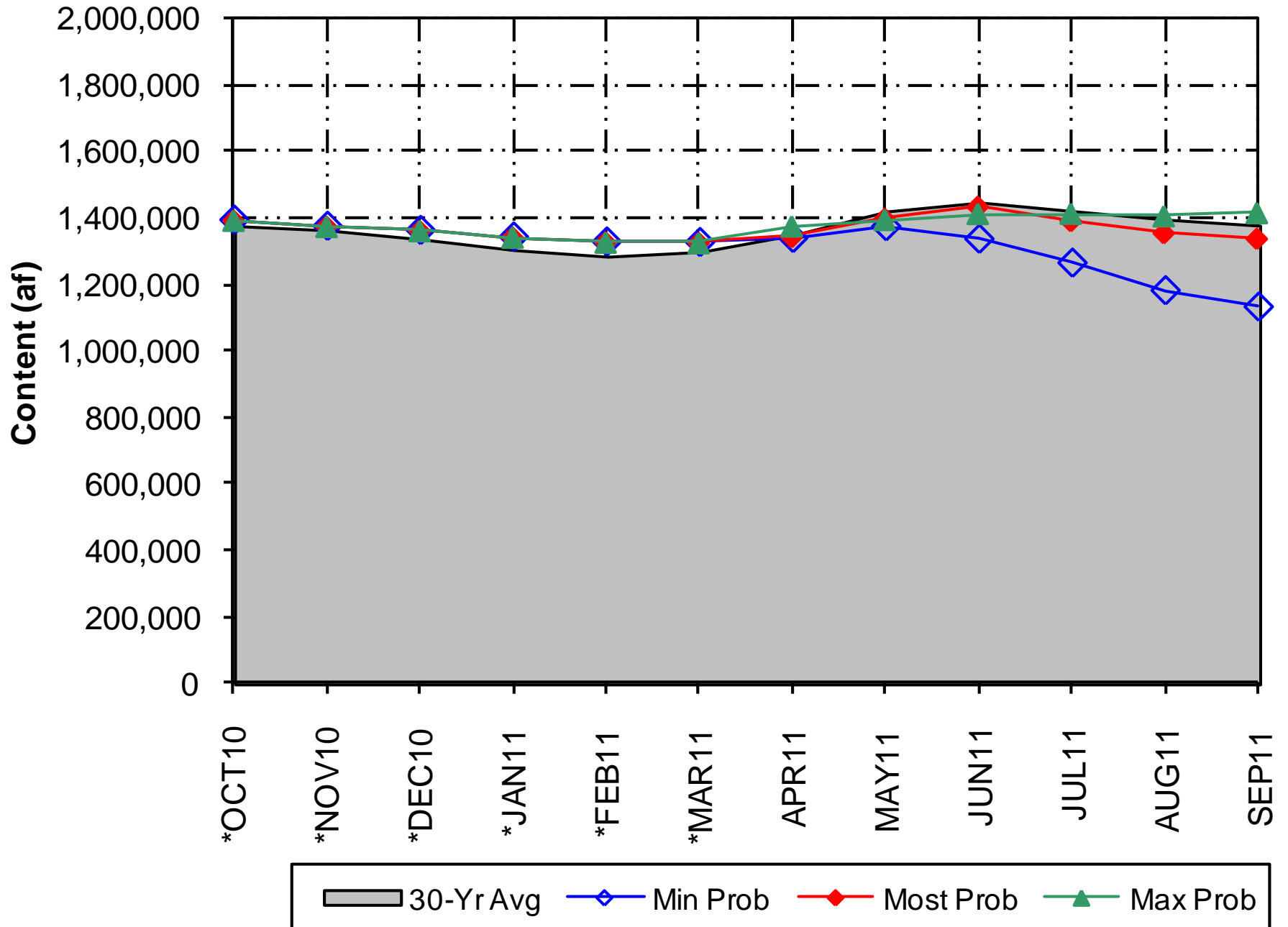
WY 2011 Navajo Disaggregated Daily Modified Unregulated Inflows



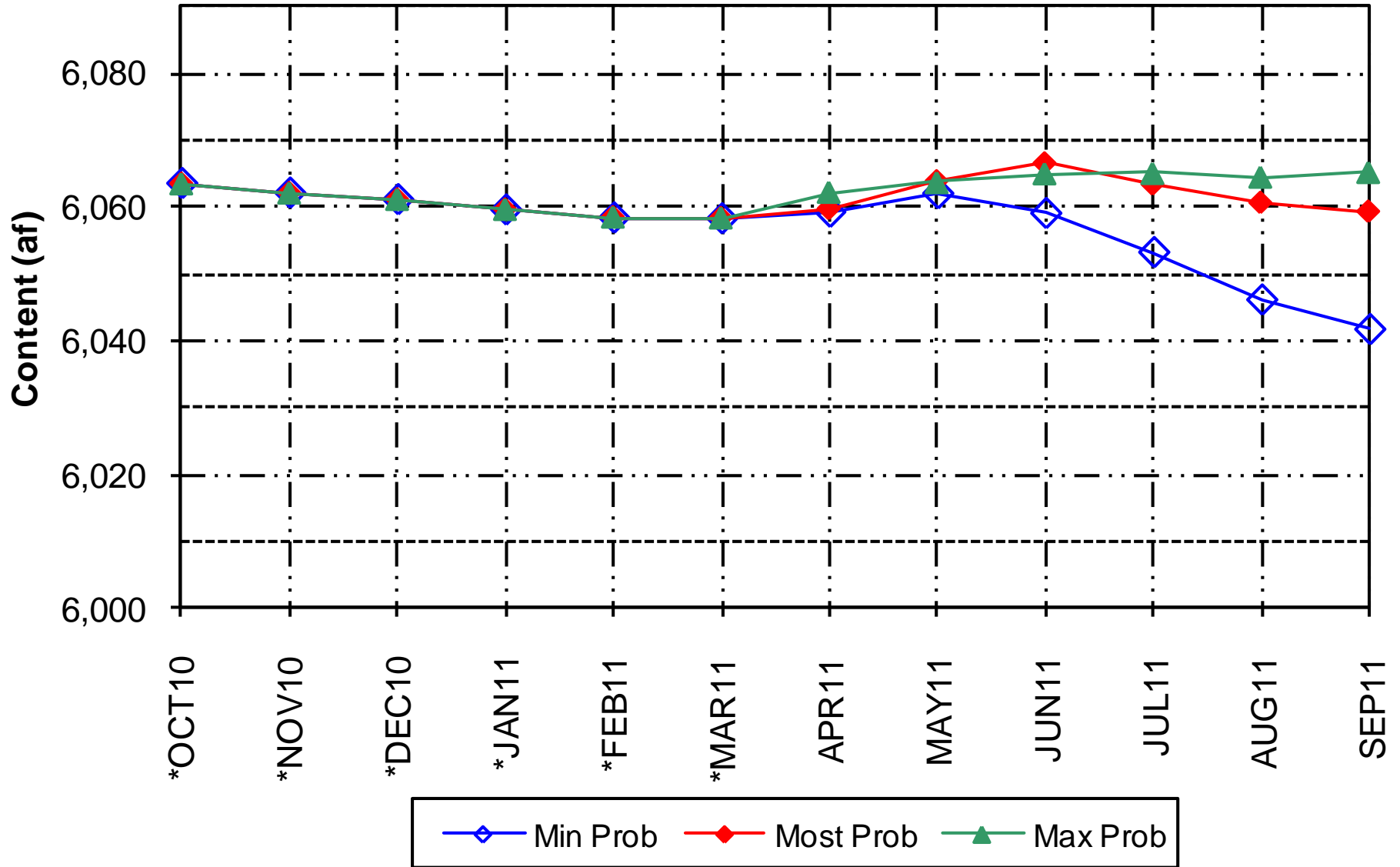
Release (af) as of April 2011 Mid Month Forecast



Content (af) as of April 2011 Mid Month Forecast

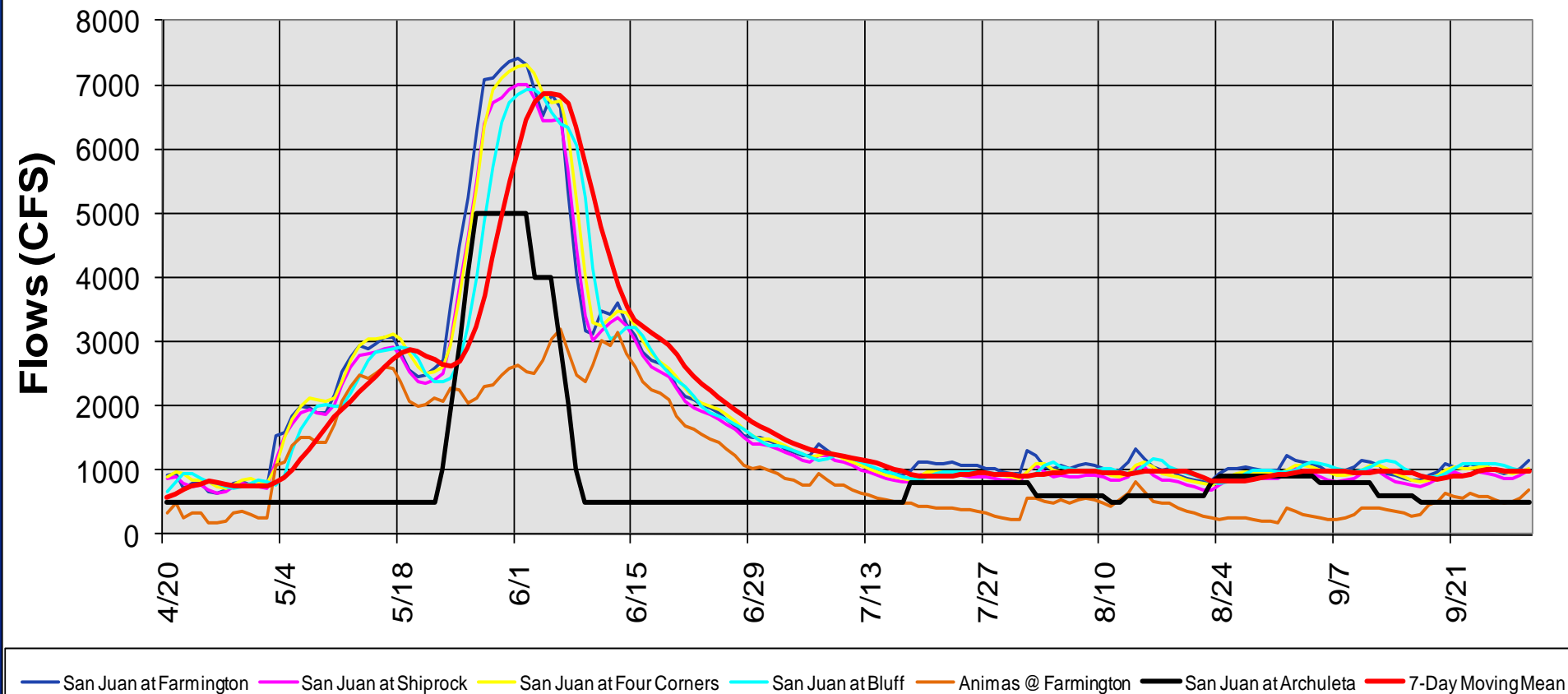


Elevation as of April 2011 Mid Month Forecast



San Juan River Downstream Flows

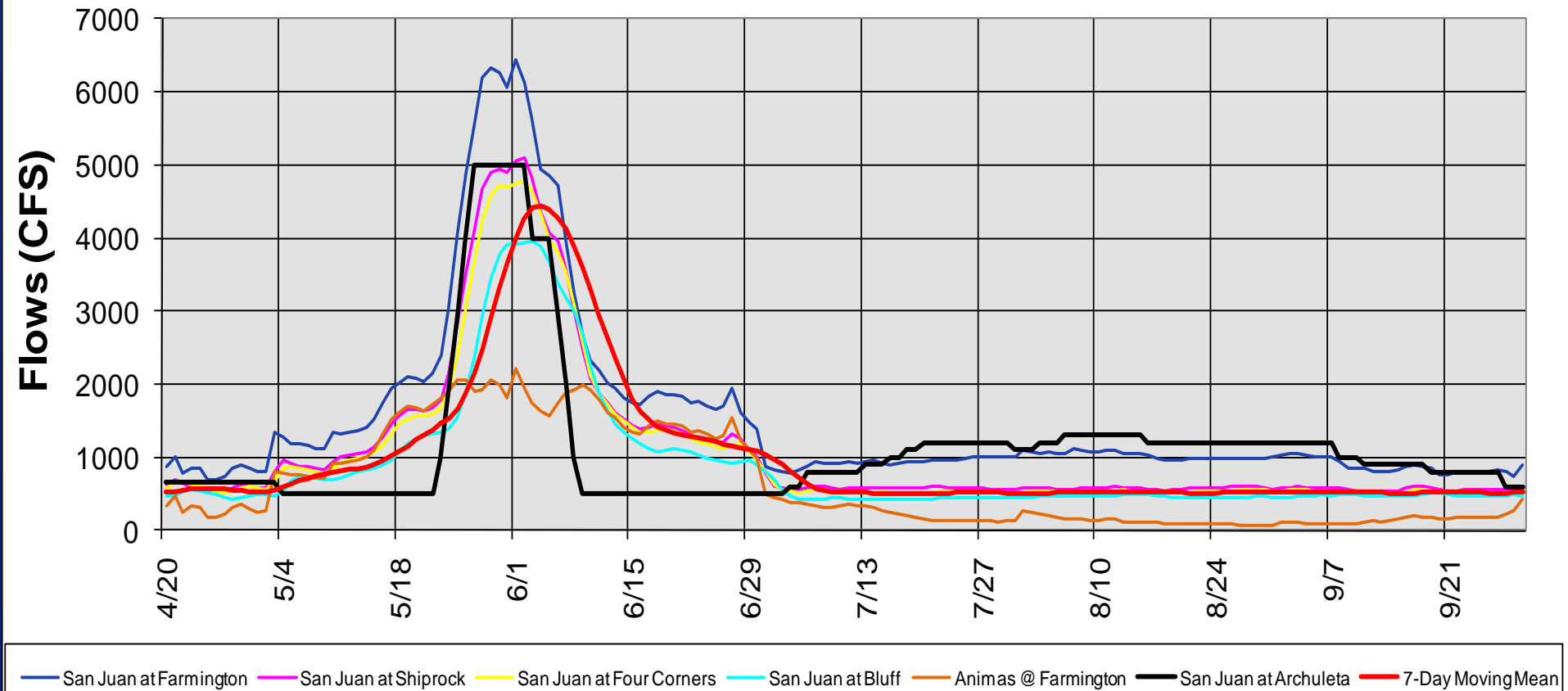
San Juan Flows based on Most Probable Inflow Forecasts for Corresponding Navajo Operations and the Animas River at Farmington



Note: Assumes median losses between downstream gages

San Juan River Downstream Flows

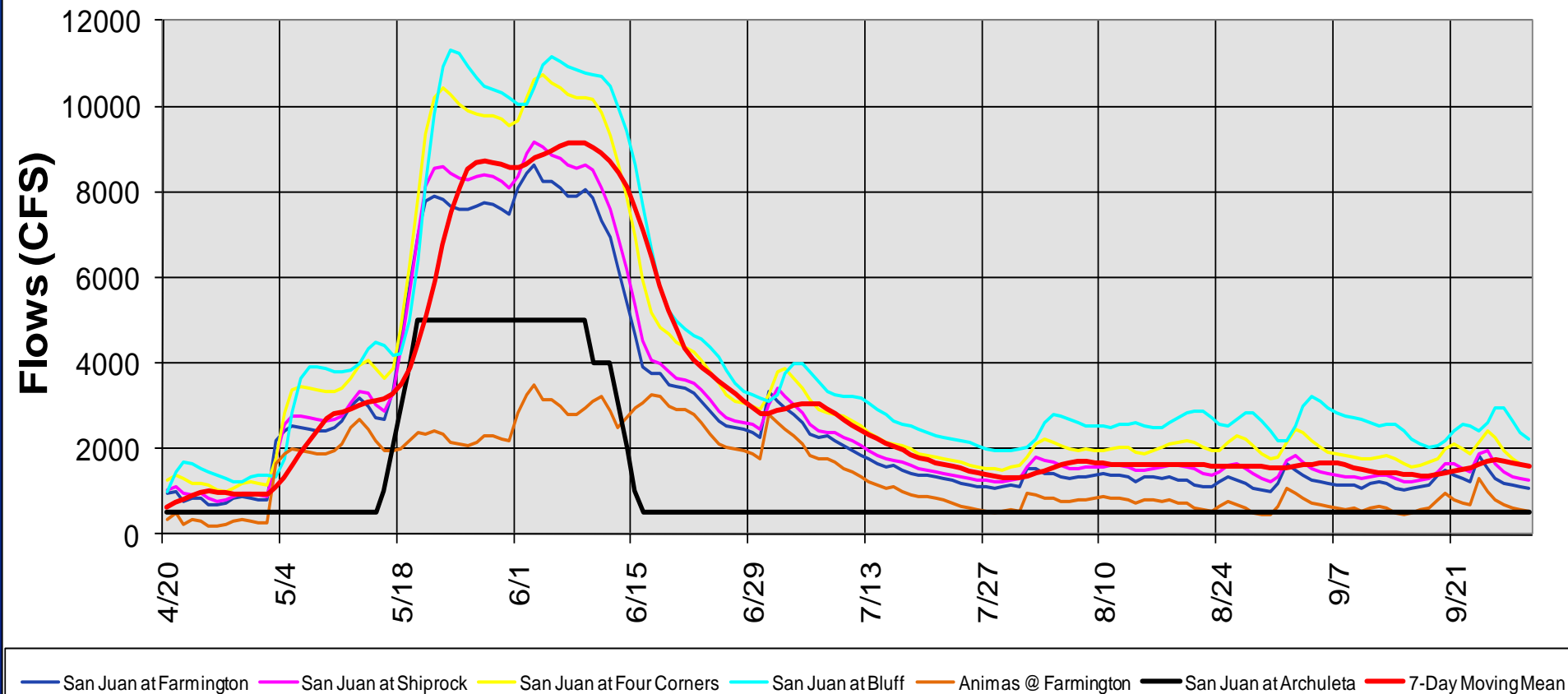
San Juan Flows based on Minimum Probable Inflow Forecasts for Corresponding Navajo Operations and the Animas River at Farmington



Note: Assumes 90% exceedance losses between downstream gages

San Juan River Downstream Flows

San Juan Flows based on Maximum Probable Inflow Forecasts for Corresponding Navajo Operations and the Animas River at Farmington



Note: Assumes 10% exceedance losses between downstream gages

An aerial photograph of a large, blue reservoir situated in a valley. The surrounding landscape is a mix of green forested areas and brown, rocky hillsides. In the foreground, a dirt road winds through the terrain. The text "Nearby Projects Update" is overlaid in large, white, bold letters with a black outline.

Nearby Projects Update

RECLAMATION

Nearby Reservoirs

(4/18/2011)

Vallecito

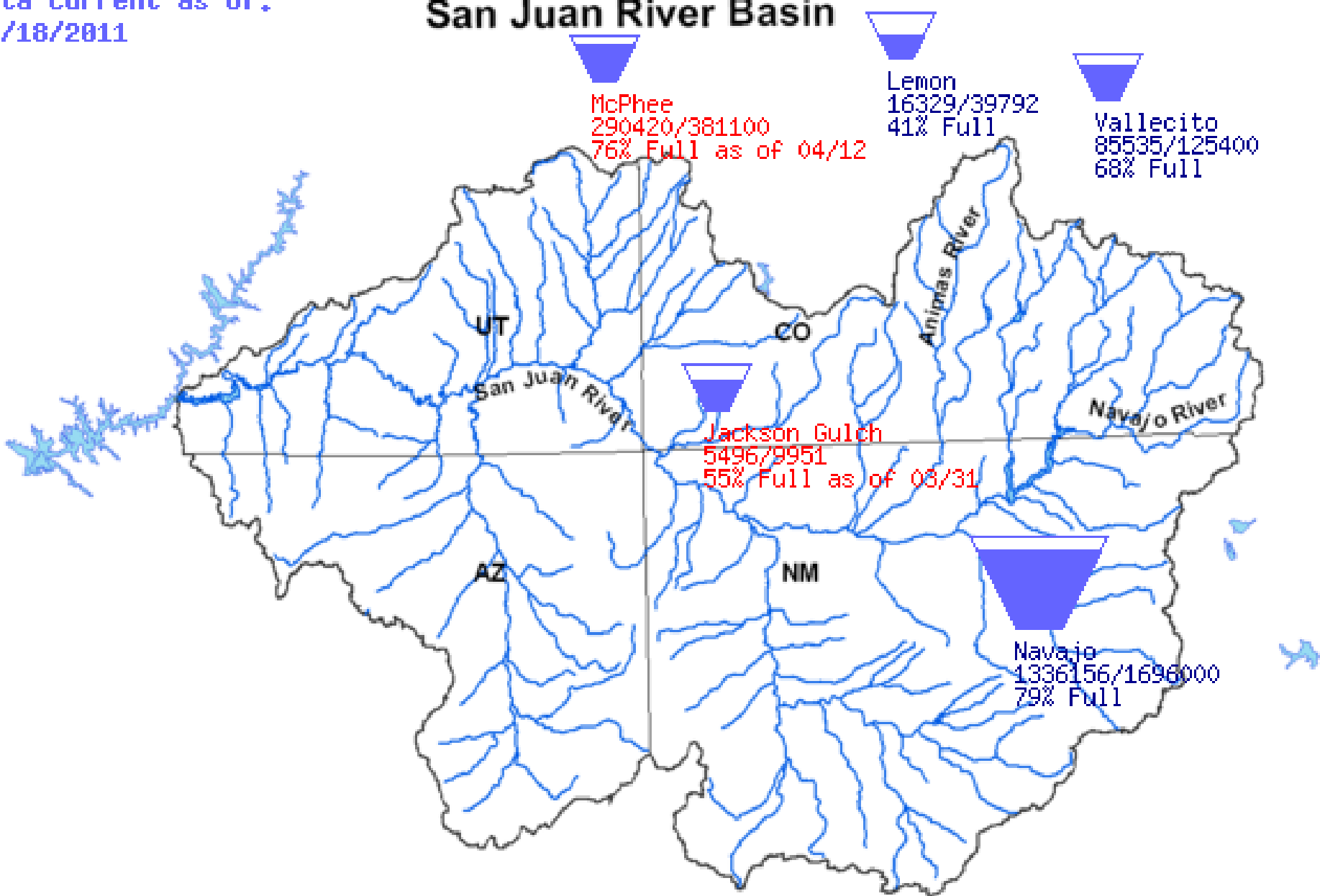
- Elevation = 7649.4 (68% Full, 117% of Average)
- Storage = 85,535 af
- Release = 50 cfs
- Inflow = 592 cfs

Lemon

- Elevation = 8101.6 (41% Full, 67% of Average)
- Storage = 16,329 af
- Release = 10 cfs
- Inflow = 109 cfs

RECLAMATION

San Juan River Basin



Animas-La Plata Project

- Currently Pumping Full Capacity (+/- 280 cfs)
- Pumping resumed on March 17th
- ~10,000 acre-feet pumped this year
- Maximum diversion this year = 282 cfs
- Reservoir is 72% Full (89,378 af stored)
- Reservoir is anticipated to fill this summer
- Navajo Nation Municipal Pipeline is currently under construction

Future Navajo Dam Maintenance Activities:

Stilling Basin Cleanout was successful

Clean up and minor repairs are being made
as a result of heavy storms last year

6x13 Emergency Gate Bonnet Maintenance

- Should occur mid-August
- Flow will be diverted through auxiliary gate for 1 month to 6 weeks





Fish & Wildlife Service
San Juan RIP Update

RECLAMATION

Upcoming Meetings of Importance

- SJRIP Biology Committee Meeting 5/10
- SJRIP Annual Meeting 5/11
- SJRIP Coordination Committee Meeting 5/12

All meetings held at Ft. Lewis College



Reports from other Agencies

RECLAMATION

The background consists of several overlapping, slightly crumpled white papers scattered across a light gray surface. Large, bold, black question marks are printed on the papers, some partially obscured by the folds and other papers. The overall composition is abstract and suggests a theme of inquiry or uncertainty.

Questions from
the Audience

How You Can Access Information



Bureau of Reclamation
www.usbr.gov/uc

USGS
<http://water.usgs.gov/nwis>

Colorado Basin River Forecast Center
www.cbrfc.noaa.gov

RECLAMATION

Reclamation Contacts:

Ryan Christianson

970-385-6590, rchristianson@usbr.gov

Ruth Swickard

970-385-6523, rswickard@usbr.gov

RECLAMATION

Summary

- After being well above average in December, precipitation has been below average for most of the winter and into spring
- Most Probable April–July Inflow Forecast is 75% of average
- There will likely be a 1-Week Spring Peak Release (7-days @5000 cfs with weeklong ramp up and downs
- Likely Minimum (Base) Release = 500 cfs (before and after SPR)
- Downstream flows are likely to below average
- Increased releases may be necessary to meet Target Base Flows

- Next Operations Meeting: August ?, 2011



Thanks For Coming!

RECLAMATION