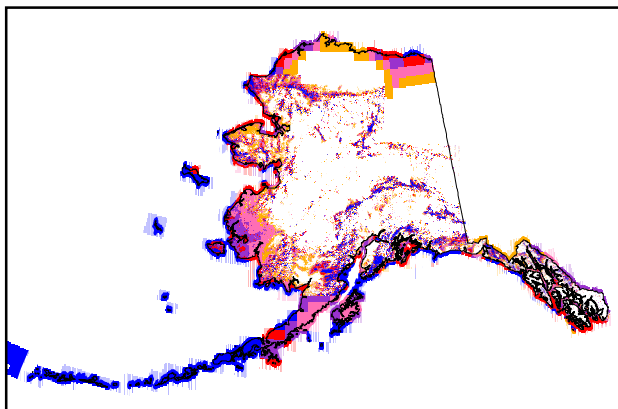
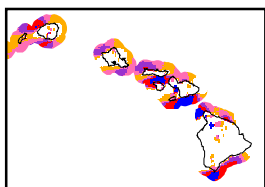
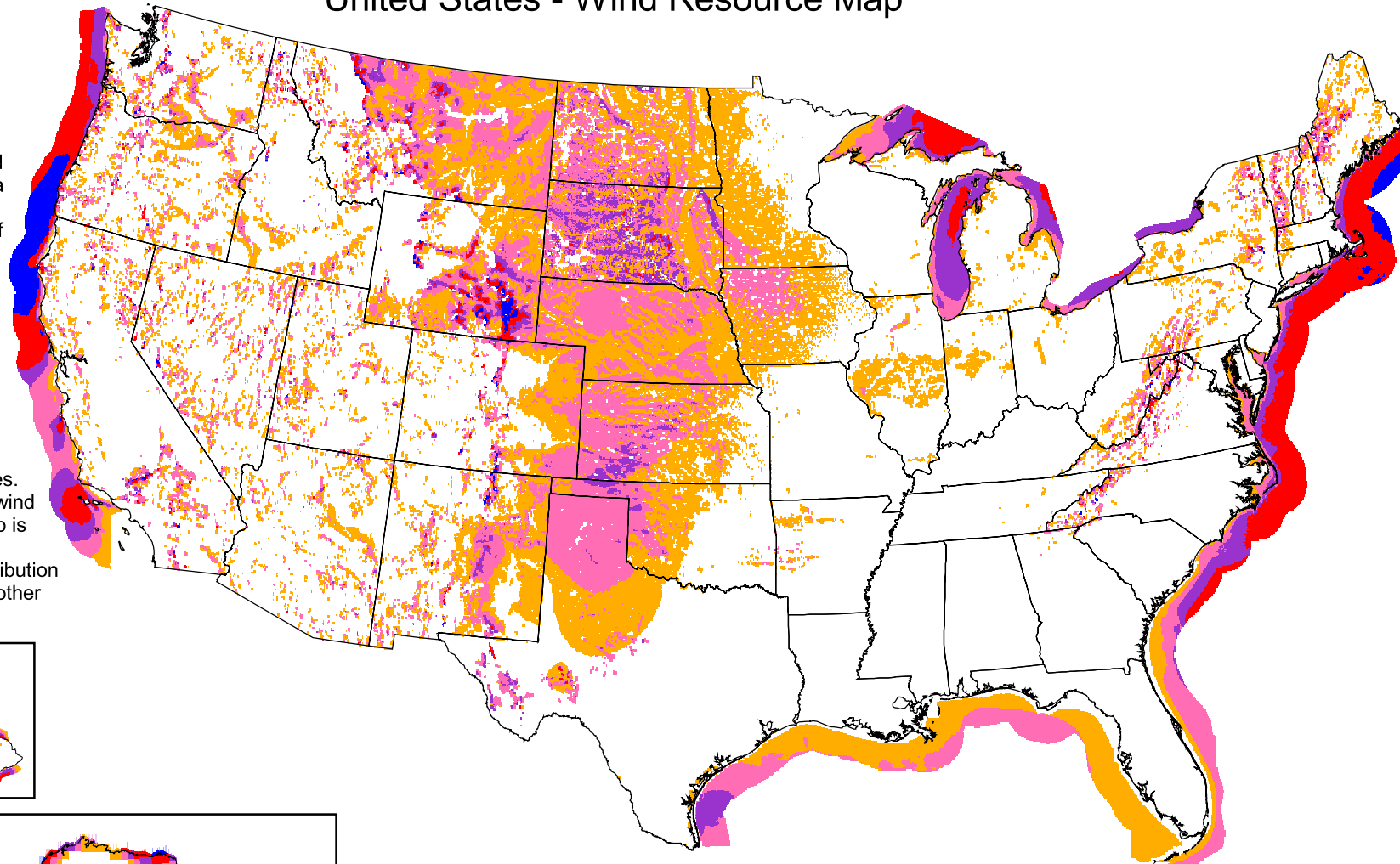


United States - Wind Resource Map

This map shows the annual average wind power estimates at a height of 50 meters. It is a combination of high resolution and low resolution datasets produced by NREL and other organizations. The data was screened to eliminate areas unlikely to be developed onshore due to land use or environmental issues. In many states, the wind resource on this map is visually enhanced to better show the distribution on ridge crests and other features.



Wind Power Classification				
Wind Power Class	Resource Potential	Wind Power Density at 50 m W/m^2	Wind Speed ^a at 50 m m/s	Wind Speed ^a at 50 m mph
3	Fair	300 - 400	6.4 - 7.0	14.3 - 15.7
4	Good	400 - 500	7.0 - 7.5	15.7 - 16.8
5	Excellent	500 - 600	7.5 - 8.0	16.8 - 17.9
6	Outstanding	600 - 800	8.0 - 8.8	17.9 - 19.7
7	Superb	800 - 1600	8.8 - 11.1	19.7 - 24.8

^aWind speeds are based on a Weibull k value of 2.0



U.S. Department of Energy
National Renewable Energy Laboratory