



# PORTSMOUTH EM SITE SPECIFIC ADVISORY BOARD

•OSU Endeavor Center • 1862 Shyville Road • Piketon, Ohio 45661 • (740) 289-5249 •

## Proposed Agenda for the December 1, 2011 Board Meeting

<p><b>Chair</b> Richard H. Snyder</p> <p><b>Vice Chair</b> Val E. Francis</p>	<p><b>6:00</b> Call to Order, Introductions Review of Agenda Approval of November Minutes</p>	
<p><b>Board Members</b> Shirley A. Bandy L. Gene Brushart Lindy A. Coleman Martha A. Cosby Ervin S. Craft Franklin H. Halstead William E. Henderson II Brian F. Huber Michael J. Lilly Sharon E. Manson Daniel J. Minter R. Daniel Moore Michael E. Payton Cristy D. Renner Roger G. Scaggs Terri Ann Smith</p>	<p><b>DDFO Comments</b></p> <p><b>Federal Coordinator Comments</b></p> <p><b>Liaison Comments</b></p> <p><b>Presentation – Information Portfolio - Karen Price</b></p> <p><b>Presentation –Archaeological Surveys – Ohio Valley Archaeology – Jarrod Burks</b></p> <p><b>Update - FLUOR B&amp;W Community Commitment Plan - Jerry Schneider</b></p> <p><b>Public Comments</b></p> <p><b>Administrative Issues</b></p> <ul style="list-style-type: none"> <li>• Subcommittee Updates</li> <li>• Thank You letter to David Huizenga Assistant Secretary EM-1</li> <li>• Amendment to Recommendation 11.02 The Construction of a Multi-Purpose Facility for DOE and Community Needs</li> </ul>	<p><b>--15 minutes</b></p> <p><b>--10 minutes</b></p> <p><b>--10 minutes</b></p> <p><b>--20 minutes</b></p> <p><b>--25 minutes</b></p> <p><b>--10 minutes</b></p> <p><b>--15 minutes</b></p> <p><b>--25 minutes</b></p> <p><b>-- 5 minutes</b></p> <p><b>--10 minutes</b></p>
<p><b>Deputy Designated Federal Official</b> Joel Bradburne</p> <p><b>DOE Federal Coordinator</b> Greg Simonton</p>		
	<p><b>Final Comments from the Board</b></p> <p><b>Adjourn</b></p>	<p><b>--10 minutes</b></p>

*Support Services*  
EHI Consultants, Inc.  
1862 Shyville Road  
Piketon, OH 45661  
Phone 740.289.5249  
Fax 740.289.1578



## PORTSMOUTH EM SITE SPECIFIC ADVISORY BOARD

Minutes of the Thursday, December 1, 2011, SSAB Meeting • 6 p.m.

**Location:** The Ohio State University Endeavor Center, Room 160, Piketon, Ohio

**Site Specific Advisory Board (SSAB) Members Present:** Chair Richard Snyder, Vice Chair Val Francis, Shirley Bandy, Gene Brushart, Martha Cosby, Ervin Craft, Franklin Halstead, William Henderson, Sharon Manson, Daniel Minter, Michael Payton, Terri Ann Smith

**SSAB Members Absent:** Lindy Coleman, Brian Huber, Michael Lilly, Dan Moore, Cristy Renner, Roger Scaggs

**U.S. Department of Energy (DOE) and Contractors:** Joel Bradburne, Greg Simonton, DOE; Julie Galloway, Cindy Lewis, EHI Consultants (EHI); Rick Greene, Restoration Services, Inc. (RSI); Jerry Schneider, Marc Jewett, Karen Price, Dennis Carr, J.D. Chiou, Jennifer Chandler, Fluor-B&W

**Board Liaisons and Related Regulatory Agency Employees:** Maria Galanti, Ohio Environmental Protection Agency (EPA); Mike Rubadue, Ohio Department of Health (ODH)

**Facilitator:** Eric Roberts, EHI

**Public:** Stephanie Howe, Ani Ruhil, Ohio University (OU); Mark Johnson (Tri-State Building and Construction Trades Council); Raymond Fischels

Approved by Richard Snyder, Board Chair

A handwritten signature in black ink that reads "Richard H. Snyder".

Richard Snyder

**Call to Order:**

**Snyder:** I would like to call the meeting to order.

**Roberts:** I would like to welcome everyone and I will be facilitating the meeting. There will be a public comment period after the presentations. The board should stay within its defined scope and follow the meeting ground rules adopted.

**December Agenda:**

**Roberts:** Are there any modifications or proposed changes to the December agenda?

- **Manson:** I make a motion to approve the agenda, **Motion seconded.**
  - **Motion carried, agenda approved**

**November Minutes:**

**Roberts:** Are there any modifications or proposed changes to the November minutes?

- **Halstead:** I make a motion to approve the November minutes as presented, **Motion seconded.**
  - **Motion carried, minutes approved**

**DDFO comments provided by Joel Bradburne, Deputy Designated Federal Official (DDFO)**

- Plant Updates
  - Process Building D&D
  - Radiation Protection
  - Environmental Remediation
  - Waste Disposition
- Regulatory Progress
  - Decision Documents on track
  - Engineering Evaluation and Cost Analysis for the Plant Support Buildings and Structures
- Public Outreach
  - Site Tours
    - Environmental Management Acting Secretary David Huizenga  
November 9, 2011
    - Piketon High School Environmental Science Class
    - Local Retirees
    - Members of Leadership Portsmouth tour
- Calendar

*A copy of the DDFO presentation is available on the SSAB web site ([www.ports-ssab.energy.gov](http://www.ports-ssab.energy.gov))*

**Federal Project Coordinator comments provided by Greg Simonton, Federal Project Coordinator:**

**Simonton:** The department (DOE) had discussions on the Sewage treatment service for the Piketon area about two weeks ago and negotiated an agreement to provide sewage treatment. Some permits still need to be worked out. I also want to point out that I had a discussion with a local hardware store manager and he wanted to thank the plant contractors for buying local. This has helped his business. The SSAB had written a recommendation supporting the new contractor use local procurement. That shows the SSAB recommendations do help the community.

<b><i>Question/Comment:</i></b>	<b><i>Answer:</i></b>
<b><i>Minter:</i></b> Is there a volume of waste that the sewage plant is accepting?	<b><i>Simonton:</i></b> Yes, in the agreement it specified the time-period and volume the plant can take in. These conditions can be expanded if needed in the future.
<b><i>Francis:</i></b> Where would the sewage be coming from?	<b><i>Simonton:</i></b> Nothing comes into the site except for OVEC (Ohio Valley Electric Corporation). After the transfer, OVEC will be part the new sewer district.

**Liaison Comments provided by Maria Galanti, Ohio EPA**

**Galanti:** Ohio EPA toured the location for a potential on-site disposal facility (site D) to check the boundaries. The Ohio EPA will have an Action Memorandum of the Environmental Evaluation/Cost Analysis (EE/CA) in the next couple of days.

<b>Question/Comment:</b>	<b>Answer:</b>
<p><b>Francis:</b> Is site D part of the 340 acres that SODI requested?</p> <p>Is the trace levels of plutonium the reason DOE could not transfer the land to SODI?</p> <p>What does it mean to be cleaned up to industrial level?</p> <p>We want to know what we are getting into so we can ask the right questions. We need presentations so we can make our recommendations in the future.</p>	<p><b>Galanti:</b> Yes, it is on the acreage that SODI requested.</p> <p>DOE could not transfer the land until it was proven that the plutonium was caused by fallout and not the process from the plant. There are no records to compare the levels of plutonium. Ohio EPA never received the data to confirm it and DOE never finished sampling.</p> <p><b>Bradburne:</b> You do not clean up to that level until a request is made for that land.</p>
<p><b>Snyder:</b> How do we get the document produced by (Marvin Resnikoff , Radioactive Waste Management Associates for Portsmouth/Piketon Residents for Environmental Safety and Security [PRESS])?</p> <p>Are there levels of plutonium that existed before the plant was built?</p>	<p><b>Roberts:</b> The document is on the SSAB web site.</p> <p><b>Rubadue:</b> Yes, you have to compare the natural plutonium with the fallout to see what may have been added. DOE may not be responsible. The weapon testing was being performed during the same time the plant was being built.</p>
<p><b>Smith:</b> If there were levels already around the site, where would Ohio EPA go to do more testing to see if DOE was responsible for the contamination?</p>	<p><b>Galanti:</b> There are several areas close to the site that could be tested.</p> <p><b>Rubadue:</b> The area has to have similar layout as the land on site. You would need to test an area away from the site.</p> <p><b>Bradburne:</b> Maybe we should have a presentation on how the background is performed. The fallout from weapons testing could even have come from Russia.</p> <p><b>Galanti:</b> Everyone agrees there is some level of plutonium all over Ohio. Some areas have higher levels than others.</p>

**Liaison comments provided by Mike Rubadue, Ohio Department of Health**

**Rubadue:** The ODH has been supporting Ohio EPA on various efforts.

**Presentations:**

**Information Portfolio presentation delivered by Karen Price, Fluor-B&W**

- Process Building D&D
  - Scope of RI/FS
  - Description of Alternatives
  - Volumes and Waste Streams
  - Protection of Human Health and the Environment

- Compliance with other laws
- Short Term Risk to Workers and the Community
- Cost
- Impact on site and regional employment
- Schedule

*A copy of the Information Portfolio presentation is available on the SSAB web site.*

<b><i>Question/Comment:</i></b>	<b><i>Answer:</i></b>
<p><b><i>Snyder:</i></b> Is the completion of the Record of Decision (ROD) for the process building D&amp;D scheduled for the fall of 2012? When does the five-year review start?</p> <p>Are there funds to cover the cost if you run into problems?</p>	<p><b><i>Galanti:</i></b> The five-year review would start after the ROD is submitted and Ohio EPA approves it.</p> <p><b><i>Bradburne:</i></b> The process building amount is only figured for the basic job.</p>

**Archaeology Surveys Report for Mound-Like Topographic Features at the Portsmouth Gaseous Diffusion Plant delivered by Albert Pecora and Jarrod Burks, Ohio Valley Archaeology, Inc.**

- Earthworks=4
- Graded Way Embankments
- Graded Way Actual Location
- Mounds
- Ethnological Collection of the Academy of Natural Sciences of Philadelphia
- Fabric from larger Van Meter Mound at the Smithsonian
- LiDAR Data PORTS
- LiDAR Mapping
- LiDAR Point Cloud in 3D
- Serpent Mound LiDAR Topo Data
- Johnson Works Southern Ross County
- LiDAR Data PORTS
- Mound-Like Topographic Features
- 1997 Archaeological Survey
- 2011 Comprehensive Survey for Additional Farmsteads & Other Historic Sites
- 1939 Aerial – 1951 Aerial
- Bamboo Farmstead
- Bamboo Farmstead – Artifact Distribution
- Bamboo Farmstead – Artifact Group Artifacts
- South Shyville Sub-floor Pit Cellar
- Examples of Artifact findings

*A copy of the Archaeology Surveys Report for Mound-Like Topographic Features at the Portsmouth Gaseous Diffusion Plant can be viewed on the SSAB web site.*

<b><i>Question/Comment:</i></b>	<b><i>Answer:</i></b>
<p><b><i>Brushart:</i></b> Have you ever heard of smoke holes being used for signaling? I have heard that is what caused some mounds to be hollowed out.</p> <p>What was the purpose of the mounds? Were they to bury remains?</p>	<p><b><i>Burks:</i></b> No, the mounds were hollowed out later.</p> <p>Adena mounds were to bury remains, but the Hopewell Mounds is where some kind of structure stood.</p>
<p><b><i>Francis:</i></b> Are there other artifacts besides Native American?</p>	<p><b><i>Burks:</i></b> I am only covering the Native American artifacts. Most of the mounds are in the flood zones. There are not any non-known mounds within the PORTS fence. Our findings were that every mound had been documented. There is a chance that some small ones may have been missed.</p>

<b>Smith:</b> Did DOE hire you?	<b>Burks:</b> No, we were hired by RSI.
<b>Bradburne:</b> What are the mounds down on the river?	<b>Burks:</b> Most of the mounds down by the river were built as flood walls. Landowners built them to protect their properties. The Native Americans did not build them.
<b>Smith:</b> Why did the government pick this area to build a plant? I heard it was because it is a rural area. The government picks areas like this because the people are not educated.	<b>Burks:</b> The landowners were given a good price for their land.  <b>Manson:</b> The plant was built here because of the river, railways and main roads were all nearby.

**Fluor-B&W Community Commitment Plan presentation delivered by Jerry Schneider, Fluor-B&W**

- Four Categories of Commitment
- Community Giving Report
- Economic Development Work on Tract
- Regional Planning Process Progressing
- Recap: Initial Recommendations
- Already Acting on Recommendations
- First Steps to Regional Collaboration

*A copy of the Fluor-B&W Community Commitment Plan presentation can be viewed on the SSAB web site.*

<b>Question/Comment:</b>	<b>Answer:</b>
<b>Minter:</b> Can you clarify the science and technology school?	<b>Schneider:</b> The vocational school.
<b>Smith:</b> You are still using taxpayer money to develop land. Who profits from this?	<b>Schneider:</b> You have to prepare a site proactively in order to draw businesses to the area. Ms. Smith I would be happy to talk with you more after the meeting.

**Public Comment:** None

**Administrative Issues:**

**Environmental Cleanup and Land Preparation Subcommittee:**

**Halstead:** The Environmental Cleanup and Land Preparation Subcommittee met on November 9, 2011. Jennifer Chandler (Fluor-B&W) spoke on the Information Portfolio. Action items were for EHI to arrange a meeting with Francis, Shepherd, Manson and anyone else interested in working on a recommendation regarding the trailers/buildings.

**Waste Disposition & Recycling:**

**Henderson:** The Waste Disposition & Recycling Subcommittee met on November 9, 2011. Dennis Carr (of Fluor-B&W) reviewed the information about the rollout plan that was presented at the November 3, 2011, full board meeting.

**Executive Subcommittee:**

**Snyder:** The Executive Subcommittee met on November 18, 2011. Bob Nichols and Dennis Carr (Fluor-B&W) were there to discuss the recommendation on a building to house D&D contractors. After much discussion the subcommittee agreed that trailers on-site for contract workers is needed, but the off-site rented facility should be built by SODI and rented by Fluor-B&W.

**Letter to Acting Assistant EM Secretary David Huizenga:**

<i>Minter recused himself from discussion of the letter to Acting Assistant Secretary David Huizenga.</i>	
<b>Question/Comment:</b>	<b>Answer:</b>
<b>Halstead:</b> When you say off-site, do you mean outside the fenced area?	<b>Henderson:</b> Off-site means off the reservation, like the Wastren building because of the length of time it takes to transfer land, building on-site

My greatest concern is the picture of the great big empty field. If there is not a big building nearby you will not need a sewer or anything.	was not feasible. We need to have something built to house the staff now and benefit the community later.  <b>Bradburne:</b> The benefit of the trailers on-site is that you can move them around to the area where they are needed.
<b>Brushart:</b> Are you saying this building would be for community use also?	<b>Francis:</b> It makes more sense to pay rent to ourselves and have a building for use by the community later.
<b>Craft:</b> Would this slow down or stop the D&D work?	<b>Snyder:</b> The D&D work would not be affected by the trailer situation.

**Comments regarding Huizenga letter from the public:** None

**Manson:** I make a motion the chair sign the letter after a few words are cleaned up, **Motion seconded.**  
 o **Motion carried (10 approved, 1 abstained, 1 recused)**

**Amendment to Recommendation 11.02, The Construction of a Multi-Purpose Facility for DOE and Community Needs:**

<i>Minter recused himself from discussion of Amendment to the Recommendation 11.02, the Construction of a Multi-Purpose Facility for DOE and Community Needs</i>	
<b>Question/Comment:</b>	<b>Answer:</b>
<b>Henderson:</b> In light of the current situation, the Executive Subcommittee decided the board needs to submit an amendment to recommendation 11.02, The Construction of a Multi-Purpose Facility for DOE and Community Needs. There was discussion that SODI should build something. SODI does not have an unlimited amount of cash and it can work with DOE and Fluor-B&W to see what the needs are. Perhaps submit grants to get the money to build.	
<b>Snyder:</b> This amendment to recommendation 11.02 does not change the fact that we agreed Fluor-B&W has to have trailers on-site for the workers.  We need to make that clear that it is not for the construction workers on-site.	<b>Francis:</b> We are only talking about the space needed off-site. We are OK to have trailers by this building for administrative overflow if they are needed.
<b>Smith:</b> Who is paying for this building?	<b>Roberts:</b> The logic is that Fluor-B&W has to pay someone rent, so it might as well be SODI, so the community can benefit.

**Comments regarding recommendation from the public:** None

**Manson:** I make a motion to accept the amendment to Recommendation 11.02, **Motion seconded.**  
 o **Motion carried ( 10 approved, 1 abstained, 1 recusal)**

**Final Comments from the board:**

**Manson:** I just want to thank Fluor-B&W for its help with the Jingle Bell Parade. The budget had been cut and we could not have done it without your support, along with some other local businesses. Thank You!

**Snyder** adjourned the meeting. *Next Meeting Thursday, January 5, 2012, 6 p.m.*

# DEPUTY DESIGNATED FEDERAL OFFICIAL PRESENTATION

Joel Bradburne, PORTS Site Lead  
U.S. Department of Energy



Portsmouth Site Specific Advisory Board  
December 1, 2011



# Agenda

- ▶ Plant Updates
- ▶ Regulatory Progress
- ▶ Public Outreach
- ▶ Calendar





# Plant Updates



▶ FBP is the DOE's Portsmouth Gaseous Diffusion Plant D&D contractor.



▶ USEC operates the American Centrifuge Project and recently returned the gaseous diffusion plant back to DOE.



▶ WEMS is the Facility Support Services contractor for infrastructure maintenance, training, security and other site services.

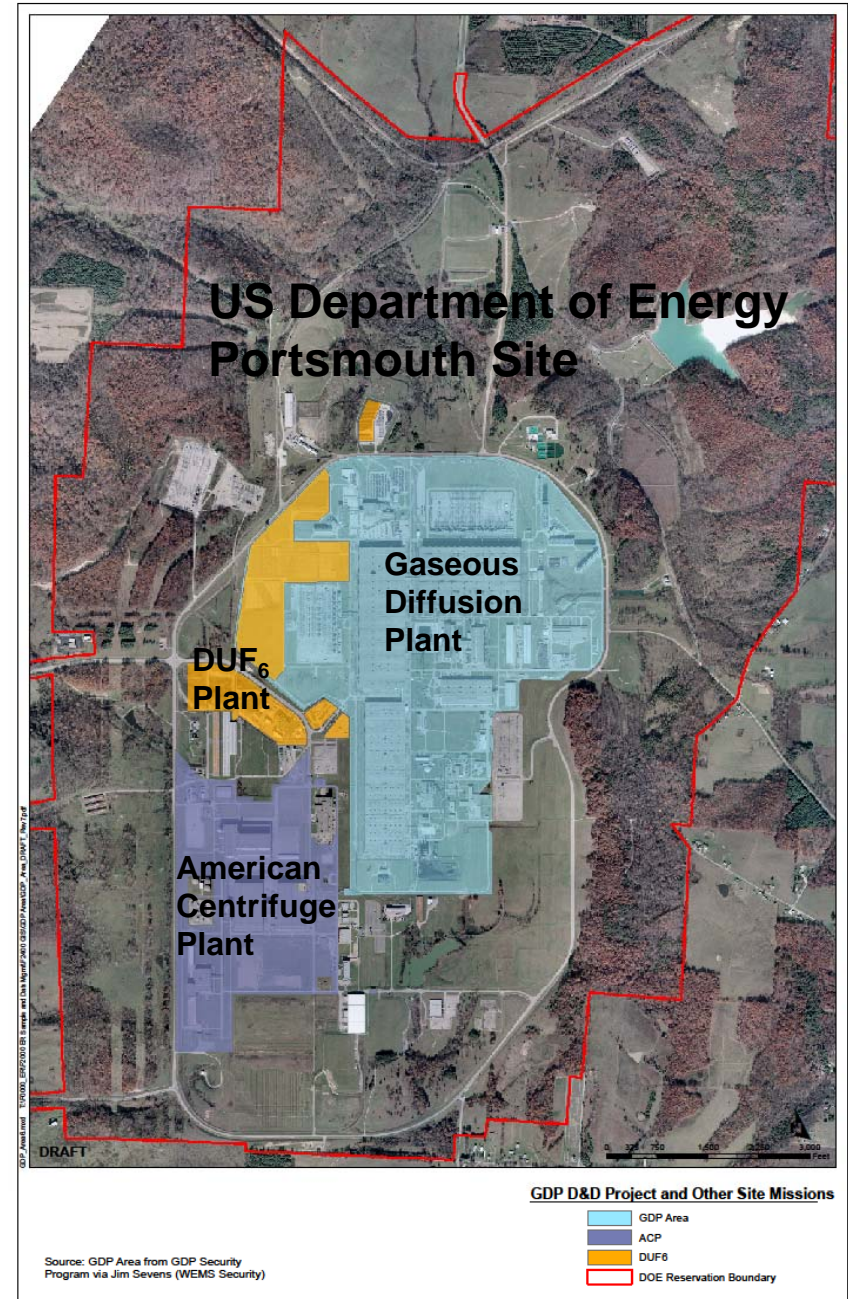


▶ BWCS operates the DOE DUF<sub>6</sub> plant, which takes depleted uranium hexafluoride and converts it for reuse or disposal.



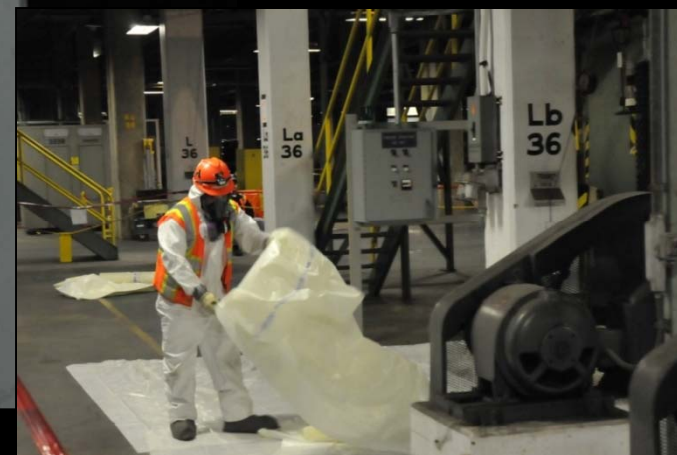
Restoration Services, Inc.

▶ RSI is the ETS contractor that assists DOE with strategic planning, oversight, regulatory support and technical support.





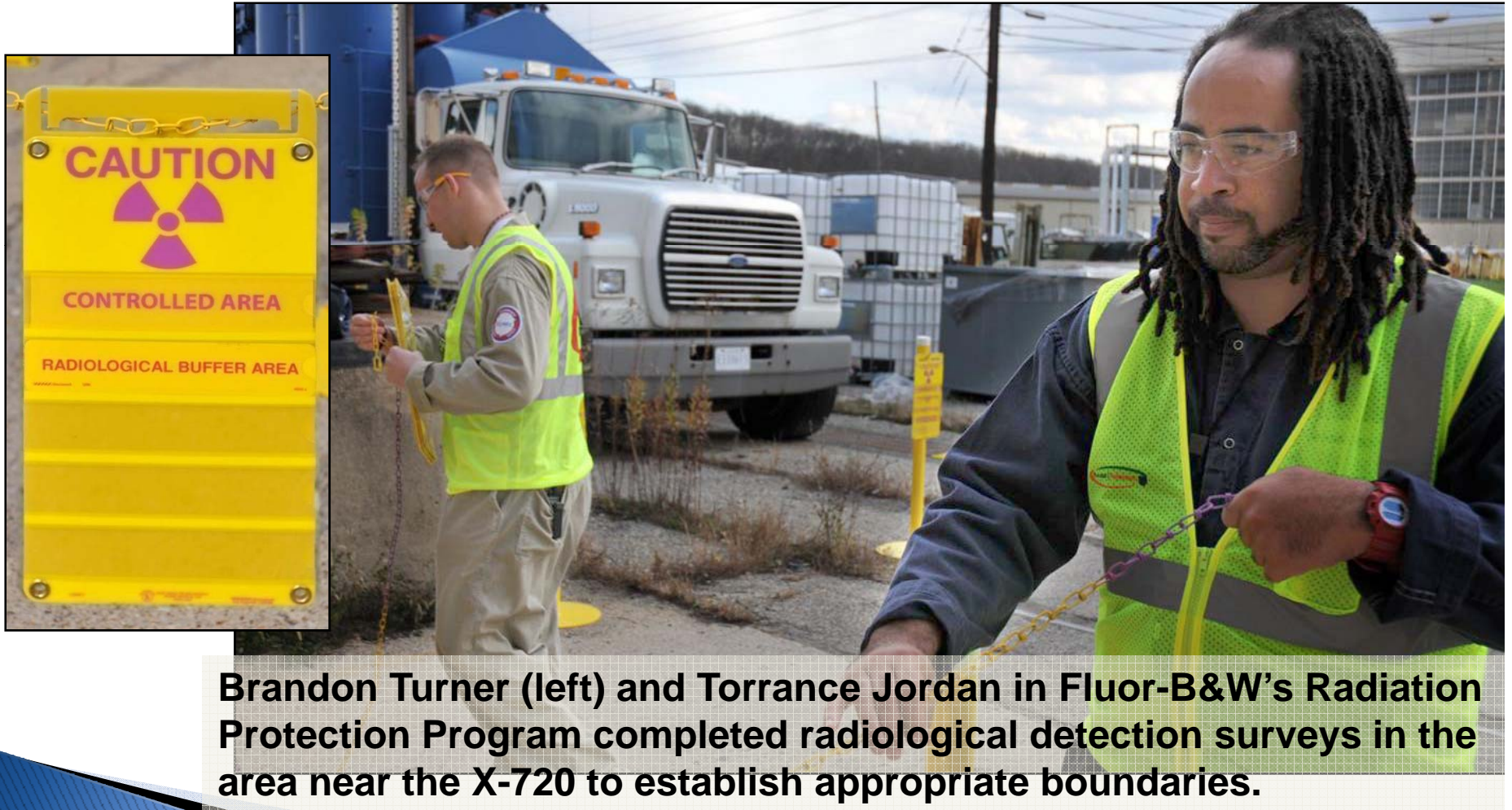
# Plant Updates





# Plant Updates

## Radiation Protection



**Brandon Turner (left) and Torrance Jordan in Fluor-B&W's Radiation Protection Program completed radiological detection surveys in the area near the X-720 to establish appropriate boundaries.**



# Plant Updates

## Environmental Remediation



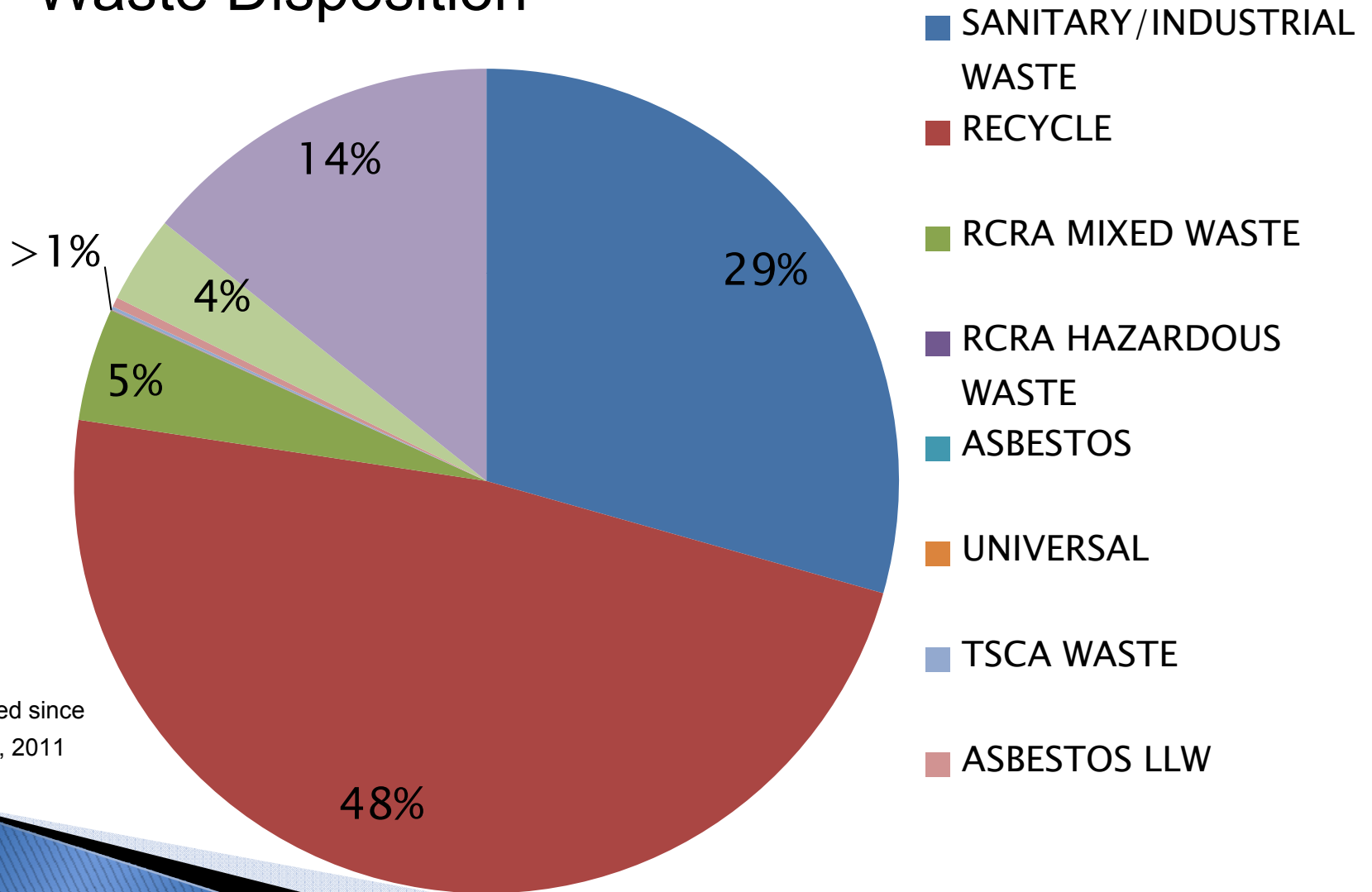
Since March 29, 2011:

- *Treated 20.3 Million Gallons of groundwater*
- *Removed over 250 pounds Trichloroethylene*
- *Injected 110,000 gallons of sodium lactate at the 7-Unit Groundwater Area.*



# Plant Updates

## Waste Disposition



\* estimated since  
March 29, 2011



# Regulatory Progress

## Decision Documents *on track*



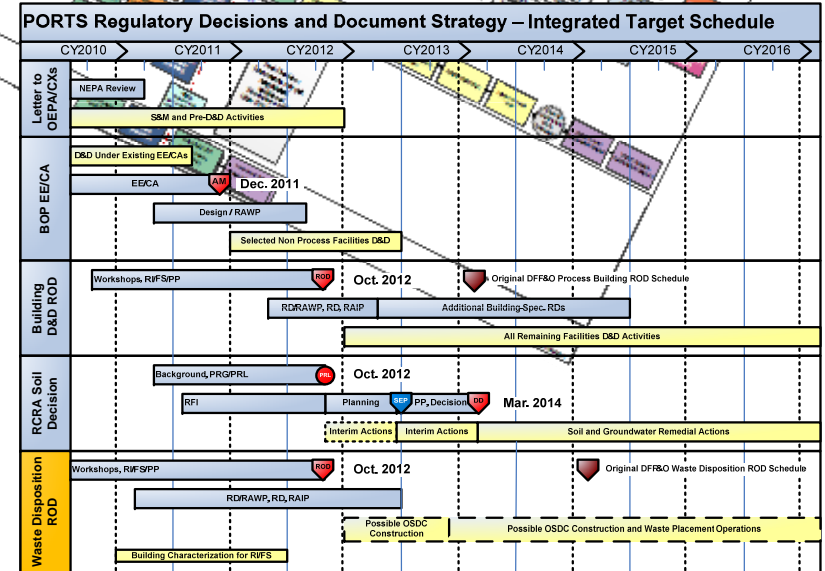
FINAL BOP Engineering Evaluation/Cost Estimate



DRAFT Process Building RI/FS Work Plan



DRAFT Waste Disposition RI/FS Work Plan





## Regulatory Progress



### *Engineering Evaluation and Cost Analysis for the Plant Support Buildings and Structures*

- *30-day public comment period closed Nov 23.*





# Regulatory Progress

## Issued Fact Sheets for the following:



- *Public Involvement*
- *Historical Preservation*
- *Engineering Evaluation and Cost Analysis for the Plant Support Buildings and Structures*





# Public Outreach



**Site Tours:**  
Environmental Management  
Acting Secretary David  
Huizenga visited the  
Portsmouth Site on  
November 9.





# Public Outreach



Site Tours:

Piketon High School Environmental Science Class tours the site.





## Public Outreach

### Site Tours:

Local Retirees tour the Area Control Room in the process building.





## Public Outreach

### Site Tours:

Members of Leadership Portsmouth tour the process building.





# Calendar



## **SSAB Subcommittee Meetings**

4:30pm Waste Disposition and Recycling

6:30pm Environmental Cleanup and Land Preparation



## **SSAB Full Board Meeting**

6:00pm



## **SSAB Subcommittee Meetings**

4:30pm Waste Disposition and Recycling

6:30pm Environmental Cleanup and Land Preparation



## **SSAB Full Board Meeting**

6:00pm

*\*These meetings will be at  
Endeavor Center in Room 165*

Roundtable for fence line  
neighbors coming in  
January 2012

**OUR SITE.  
OUR FUTURE.**

Next Quarterly Public Meeting:  
**JANUARY 31, 2012**  
6 p.m. at Waverly High School



# Community Commitment Plan

Report To: Portsmouth EM Site Specific Advisory Board  
December 1, 2011

## Economic Development Energy in Appalachian Ohio

*By Jerry Schneider, Senior Manager, Public Affairs*



# Four Categories of Commitment

- Educational Outreach
- Community Giving
- Regional Purchasing
- Economic Development



# Community Giving Report

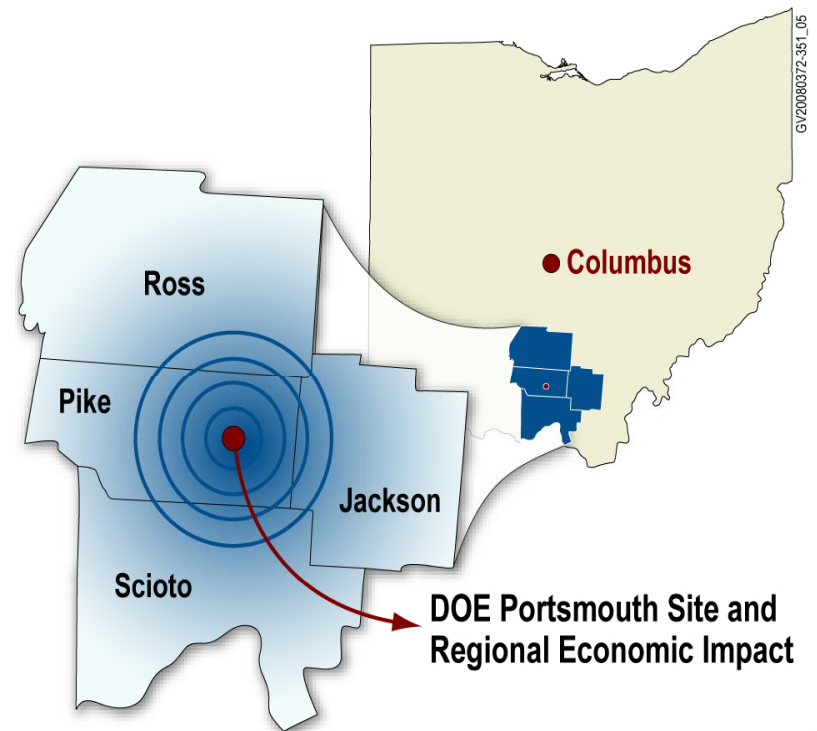
- Science, Technology, Engineering, Math grants: \$36,000
- Fluor Foundation
  - Food Pantries \$30,000
  - United Way \$10,000
- Employee United Way campaign, payroll deduction ongoing



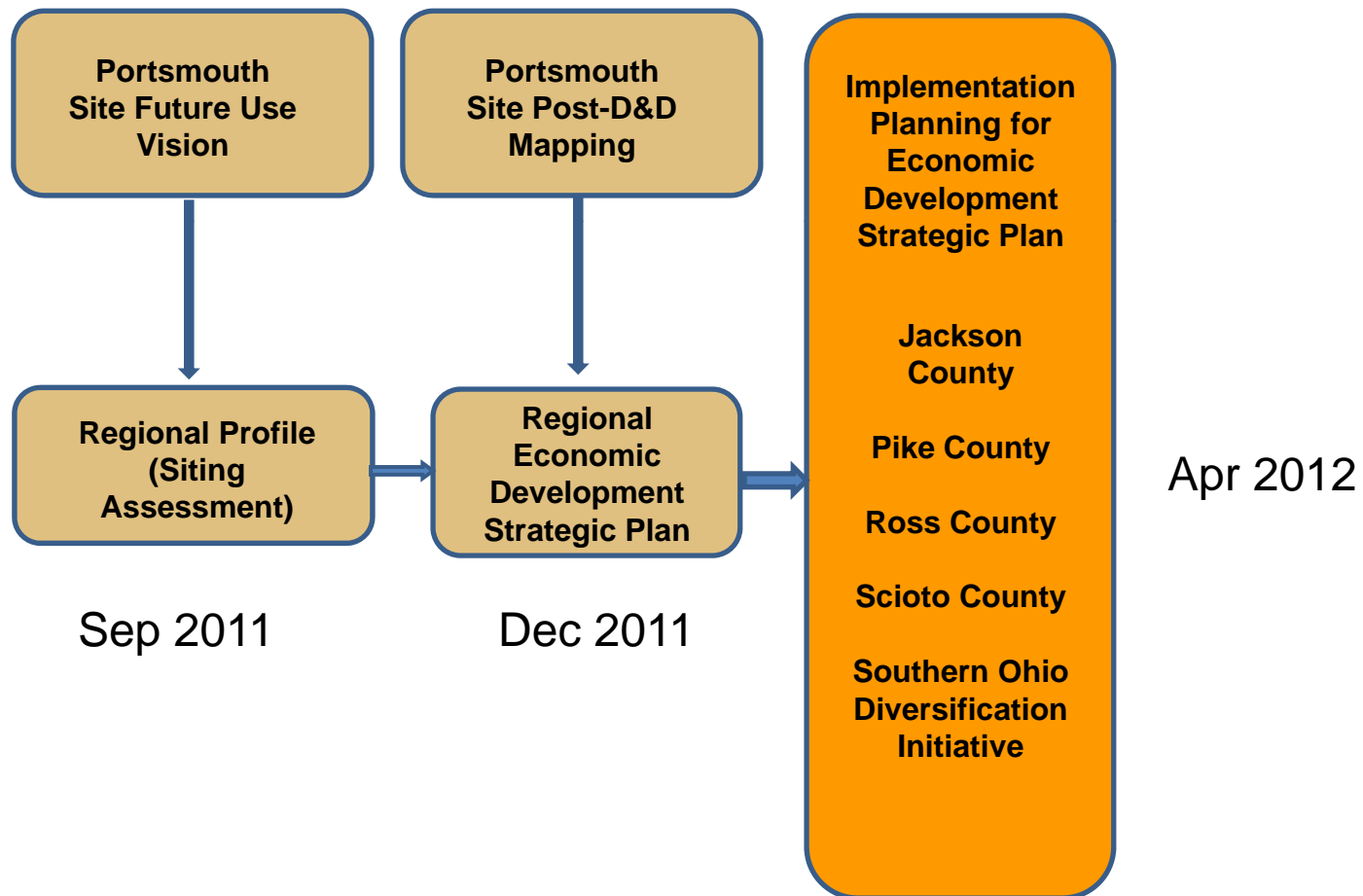
# Economic Development Work On Track

- Contribute to economic stabilization, growth of four counties around Site
- Regional Planning Process  
To identify, showcase counties' combined strengths, capabilities

## Regional Economic Impact



# Regional Planning Process Progressing



## Recap: Initial Recommendations

- Identify available resources for local governments to support economic development.
- Begin marketing, outreach before full “product” development
- Refine needs, develop data, identify initial marketing targets
- Ensure Southern Ohio regional role represented in new JobsOhio organization

## Already Acting on Recommendations

- Collaborating with economic development leaders in four counties, SODI
- Awarded \$80,000 for economic development proposals in four counties
  - \$20,000 “seed investment” in each county
  - Address needs identified in Fluor-B&W Regional Economic Profile, especially preparing “product” information

# First Steps to Regional Collaboration

- Appalachian leadership for JobsOhio visits Piketon; tours Site
- Meet with Appalachian Partnership for Economic Growth
- (APEG) proposal: “will leverage” economic development strategy of four counties



# Community Commitment Plan Report

Questions?

[www.fbportsmouth.com](http://www.fbportsmouth.com)