



Portsmouth EM Site Specific
Advisory Board

SUBCOMMITTEE CHAIR

MARTHA COSBY

SUBCOMMITTEE VICE CHAIR

AL DON CISCO

BOARD CHAIR

WILLIAM HENDERSON

BOARD VICE CHAIR

BOB BERRY

SUBCOMMITTEE MEMBERS

RONDA KINNAMON

DOE DEPUTY DESIGNATED

FEDERAL OFFICIAL

JOEL BRADBURNE

DOE FEDERAL COORDINATOR

GREG SIMONTON

SUPPORT SERVICES

EHI CONSULTANTS

PHONE: 740-289-5249

FAX: 740-289-1578

EMAIL: JULIE@PORTS-SSAB.ORG

D&D/REMEDIATION SUBCOMMITTEE

TUESDAY, MARCH 8, 2016 @ 4:45 P.M.

**THE PURPOSE OF THIS MEETING IS TO GIVE AN ON-SITE WASTE DISPOSAL FACILITY
UPDATE WITH THE SUBCOMMITTEE**

AGENDA

- ON-SITE WASTE DISPOSAL FACILITY UPDATE – J.D. CHIOU, FBP
 - TREE REMOVAL
 - X-114 FIRING RANGE
 - LANDFILLS & PLUMES

- MISCELLANEOUS

ADJOURN



D&D/REMEDIATION SUBCOMMITTEE

MEETING SUMMARY

MARCH 8, 2016 • 4:45 P.M.

THE OHIO STATE UNIVERSITY ENDEAVOR CENTER
1862 SHYVILLE ROAD, PIKETON, OH 45661

SSAB Subcommittee Members Present: Martha Cosby, chair; Al Don Cisco, vice chair

SSAB Subcommittee Members Absent: Ronda Kinnamon

Other SSAB Members Present: Bob Berry, board vice-chair; Stan Craft, Carl Hartley, Carlton Cave

U.S. Department of Energy (DOE) and contractors: Greg Simonton, DOE; Rick Greene, Joe Moore, Restoration Services, Inc. (RSI); Dennis Carr, Jeff Wagner, J.D. Chiou, Fluor-B&W Portsmouth (FBP)

Liaisons: Jim Sferra, Ohio Environmental Protection Agency (EPA); Mike Rubadue, Ohio Department of Health (ODH)

Support Staff: Eric Roberts, Julie Galloway, Cindy Lewis, EHI Consultants (EHI)

Public: None

Cosby: opened the meeting:

1. On-Site Waste Disposal Facility Update presented by J.D. Chiou, FBP:

- **OSWDF 5-Year Look Ahead**
- **OSWDF Early Support Activities**
 - **NHPA Phase III Data Recovery Complete in August 2015**
 - **Well Abandonment**
- **On-Going Activities**
- **OSWDF Basic Design**
- **Engineering Design Packages**
- **Design Packages Review Levels and Current Status**
- **Before Tree Cutting (Nov. 2014)**
- **During Tree Cutting (Nov. 2015)**
- **During Tree Cutting**
- **Final Tree Cutting Statistics**
- **On-Going Activities**

Chartered as an EM Site Specific Advisory Board under the Federal Advisory Committee Act

2015 PIKE COUNTY CHAMBER OF COMMERCE ORGANIZATION OF THE YEAR

- **On-Going Discussions**

Cave: You said the cap system has 10 feet of different layers, so given our worst rain what would be the penetration down that 10 feet?	Chiou: It would stop at the Cuyahoga layer, all the way to the plastic layer and even below that we have compacted clay.
Hartley: Has the decision been made to put the switchyard outside the fence?	Carr: Right now, it stays right where it is.

2. Miscellaneous: None at this time.

Cosby: Meeting adjourned

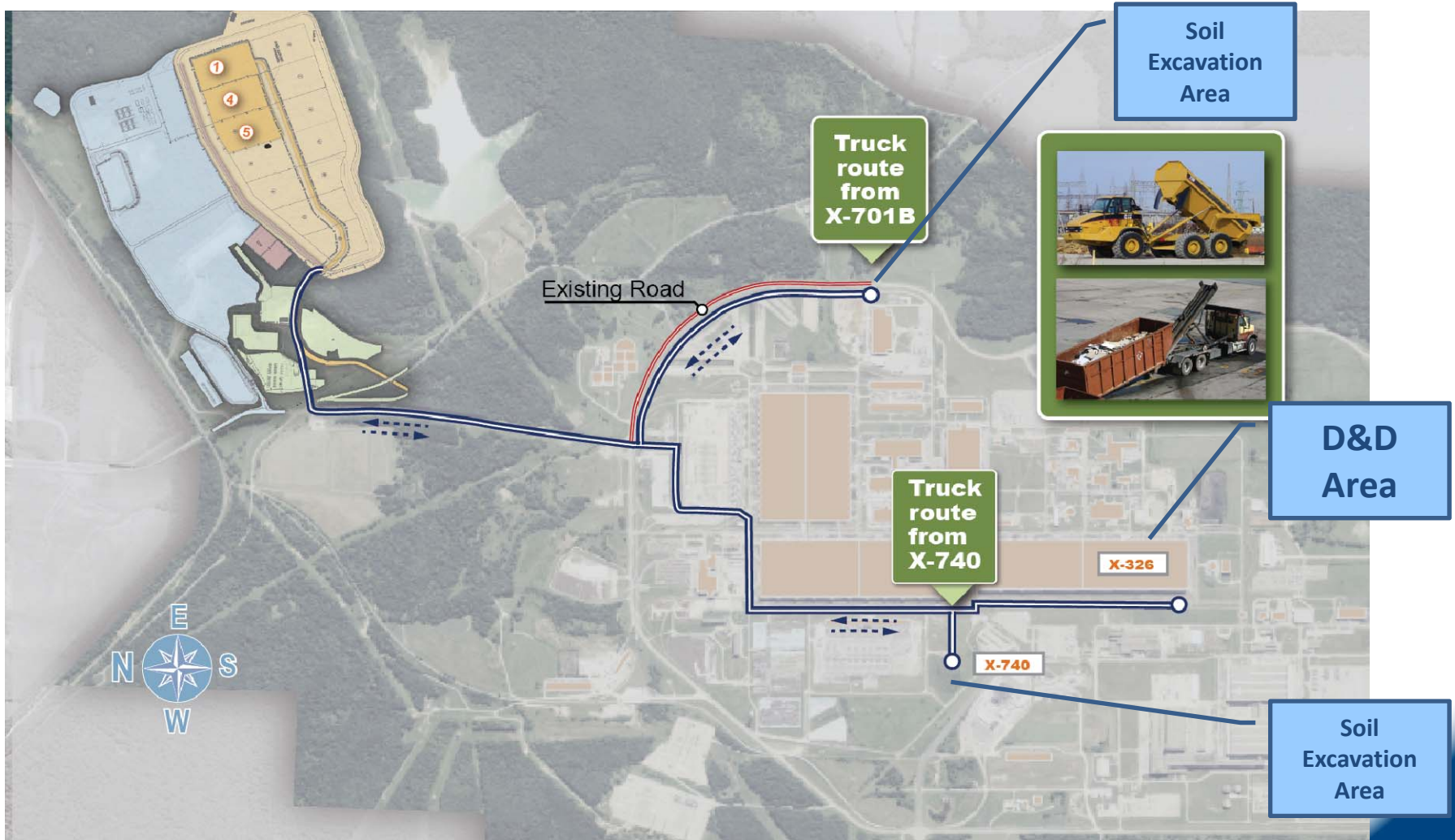
3. Action Items: None at this time.

OSWDF Status



J.D. Chiou

OSWDF 5-Year Look Ahead



OSWDF Early Support Activities

- Early activities include long-lead procurement, access control fencing, site preparation/grading, initial infrastructure installation, and other preparation activities for the actual liner construction.
- Completed activities in 2015 include: NHPA data recovery (in accordance with ARARs) and well abandonment.
- On-Going and planned activities in 2016 and 2017 include: complete tree clearing, perimeter fencing and gates, construction trailers, power /communication, GPS base station, time-lapse cameras, raw water line, sedimentation and detention ponds, North Access Road improvement, site preparation for infrastructure Phases I/II and North LTS, D&D of X-114A structures, clay processing, and GML/GCL and construction materials procurement, etc.

OSWDF Early Support Activities

✓ NHPA Phase III Data Recovery Complete in August 2015:

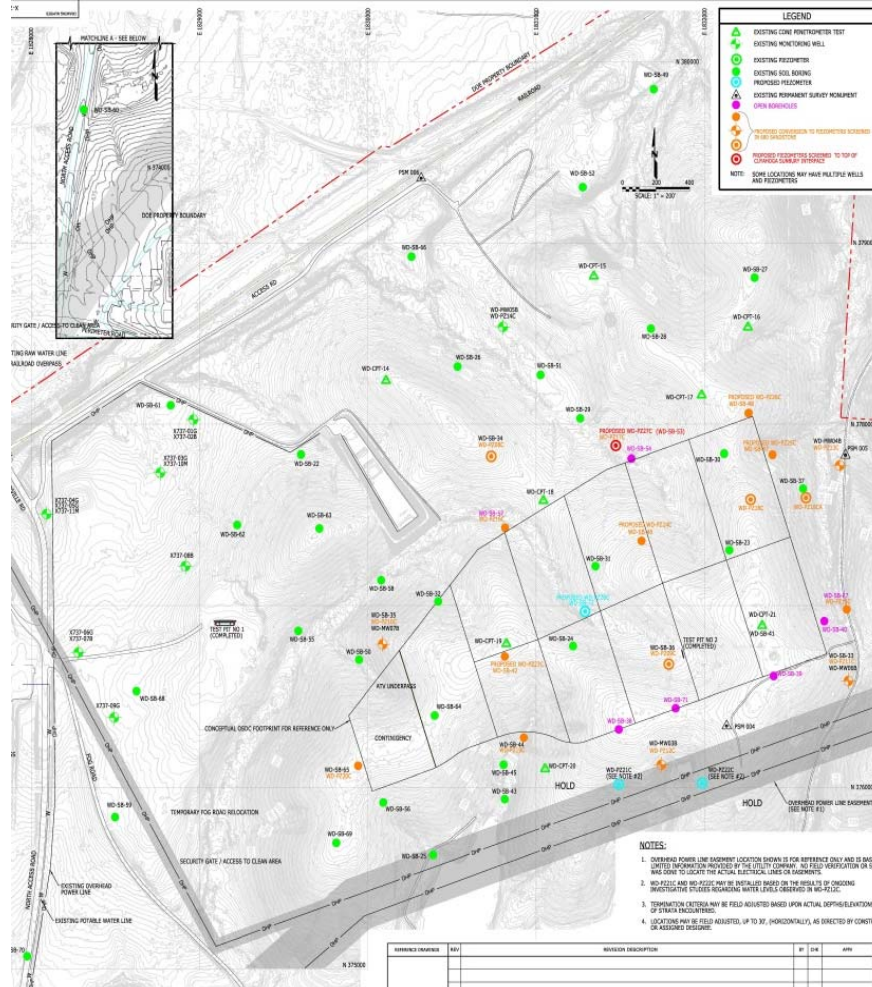
- Work was performed per Data Recovery Plan as approved by DOE.
- Data recovery planning was closely communicated with the State Historic Preservation Office and Tribal Nations.
- Field work started on July 20th and completed in August.



OSWDF Early Support Activities

✓ Well Abandonment:

- Abandon wells, piezometers, and soil borings – Completed 2015.
- Abandoned due to current locations within the footprint of the OSWDF.
- Locations sealed/abandoned by over-drilling or abandonment in place.
- 8 soil borings, 16 piezometers, 6 monitoring wells were abandoned.

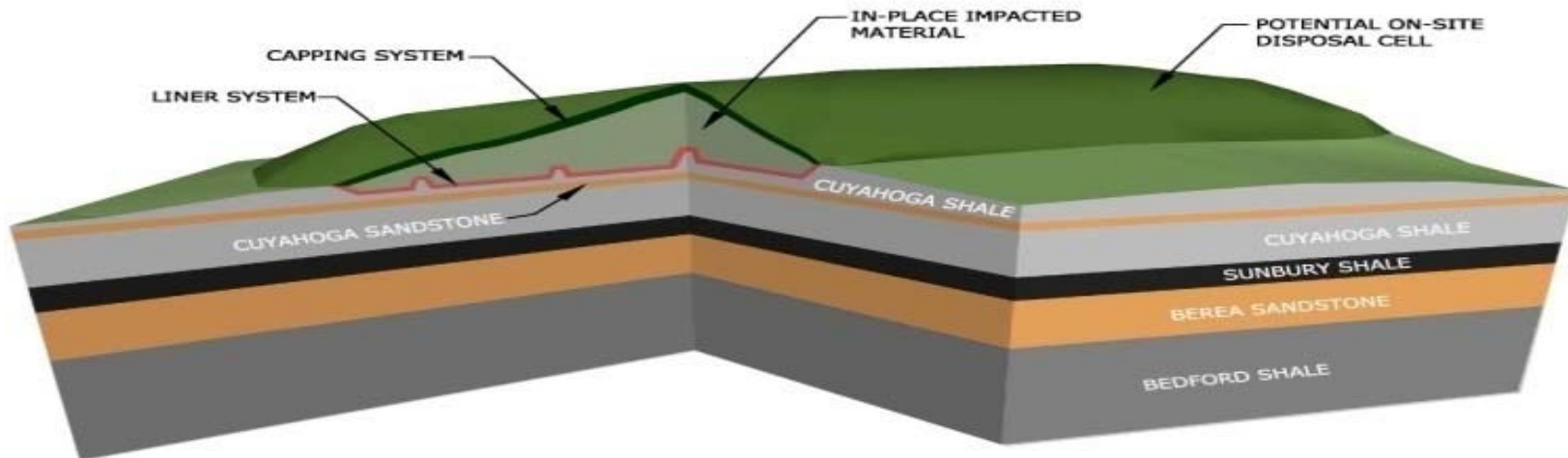


On-Going Activities

- **Design (OSWDF And Site Wide Integration)**
 - Pre-Final Design Package
 - Site Wide Waste Water Treatment Needs Evaluation
 - Impacted Material Haul Road Functional Design
 - Hazard Analysis Report Update

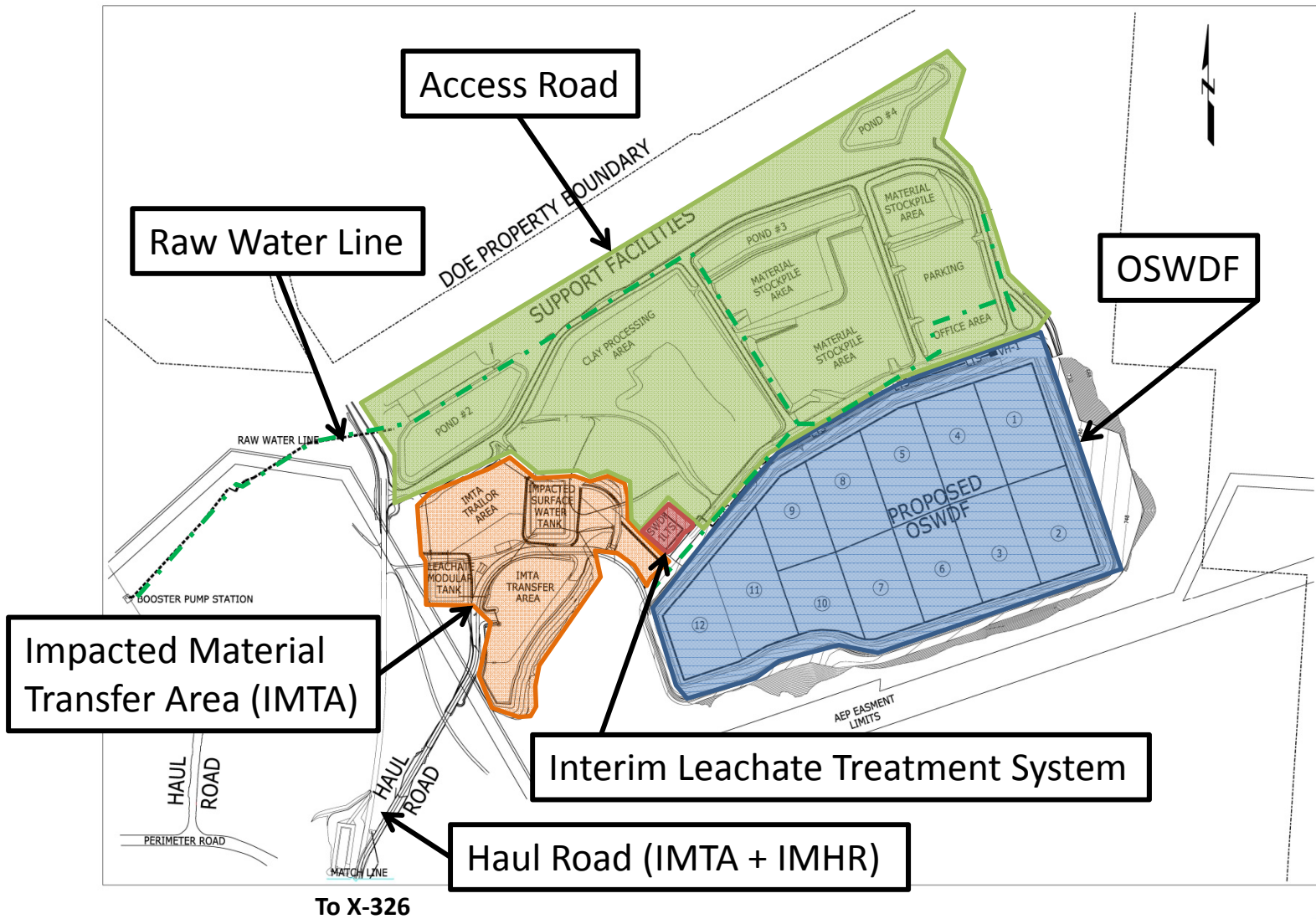
- **Site Preparation (CD-3A)**
 - X-114A Firing Range Soil Treatment
 - Sedimentation Pond #2 and Raw Water Line Construction
 - Project Boundary Installation

OSWDF Basic Design



Facility And Underlying Geological Cross Sections

Engineering Design Packages



Design Packages Review Levels And Current Status

Design Package	DOE Review	OEPA Review	Current Status
Access Road	✓		~100% - CFC
Raw Water Line	✓		~100% - CFC
OSWDF¹	✓	✓	90%
Impacted Material Transfer Area¹	✓	✓	90%
Interim Leachate Treatment System^{1,3}	✓	✓	~30%
Haul Road (IMTA ² & IMHR)	✓		IMTA – 90% IMHR – In Functional Design

¹ OSWDF, Impacted Material Transfer area 90% design, and the ILTS 30% design will be jointly submitted to the OEPA in spring of 2016.

² Sections of the IMTA haul road will be submitted on the drawings associated with the Transfer Area.

³A follow up ILTS 60% design will be submitted to the OEPA later 2016.

Before Tree Cutting (Nov. 2014)



During Tree Cutting (Nov. 2015)



During Tree Cutting



Final Tree Cutting Statistics

Safety Statistics	
Man-hrs worked thru 1/20/16	8080
Lost Time Accidents	0
Recordable Cases	0
First Aid Cases	0
Project Statistics	
Start Date	November 10, 2015
Finish Date	January 12, 2016
Total Project Acres	294
Total Forrested Acres	205
Average Loads Per Day	16.78
Peak Loads Per Day	26
Total Truck Loads	755
Total Log Trucks	349
Total Chip Trucks	406
Total Tons of Chips	11228.53



On-Going Activities

- ❑ X-114A Lead Soil Maintenance - Projected Completion by April 2016



On-Going Discussions

- **Regulatory Authorization For Plume And Landfill Excavation To Provide Contaminated Fill**
 - Began discussions with Ohio EPA regarding the Natural Resource Damage DFF&O
- **Site Wide Waste Water Treatment Strategy**
 - Considering a centralized site wide waste water treatment plant that will support OSWDF, D&D, soil excavation, and groundwater remediation activities.
 - Potential locations and capacity
 - Pretreatment requirements at the sources