



# PORTSMOUTH EM SITE SPECIFIC ADVISORY BOARD

•OSU Endeavor Center• 1862 Shyville Road • Piketon, Ohio 45661 • (740) 289-5249 •

## Proposed Agenda for the May 5, 2016 Board Meeting

### Chair

William E. Henderson II

### Vice Chair

Robert Berry

### Board Members

Lisa Bennett

Maddeline C. Caudill

Carlton L. Cave

Al Don Cisco

Martha A. Cosby

Ervin S. Craft

Carl R. Hartley

Ronda J. Kinnamon

Neil Leist

Bernard S. Neal

Irma C. Payne

Cristy D. Renner

Judy R. Vollrath

### 6 p.m.

Call to Order, Introductions

Review of Agenda

Approval of March Minutes

### DDFO Comments

--15 minutes

### Federal Coordinator Comments

--10 minutes

### Liaison Comments

-- 5 minutes

### EM SSAB National Chairs Meeting Recap

--15 minutes

Will Henderson, Board Chair; Bob Berry, Board vice Chair;  
Cristy Renner

### EM SSAB Recommendations

- EM SSAB Funding
- Community Investment as Factor in Contract Proposal Evaluation Process

### Presentation

--20 minutes

X-333 Deactivation Overview, Dennis Carr, FBP

### Deputy Designated

### Federal Official

Joel Bradburne

### Administrative Issues

--20 minutes

### DOE Federal Coordinator

Greg Simonton

### Recognition of outgoing SSAB Members,

Joel Bradburne & Greg Simonton, DOE

### Subcommittee Updates

--5 minutes

### Public Comments

--15 minutes

### Final Comments from the Board

--15 minutes

### Adjourn

### Support Services

EHI Consultants, Inc.

1862 Shyville Road

Piketon, OH 45661

Phone 740.289.5249

Fax 740.289.1578

*Chartered as an EM Site Specific Advisory Board under the Federal Advisory Committee Act*



# DEPUTY DESIGNATED FEDERAL OFFICIAL PRESENTATION

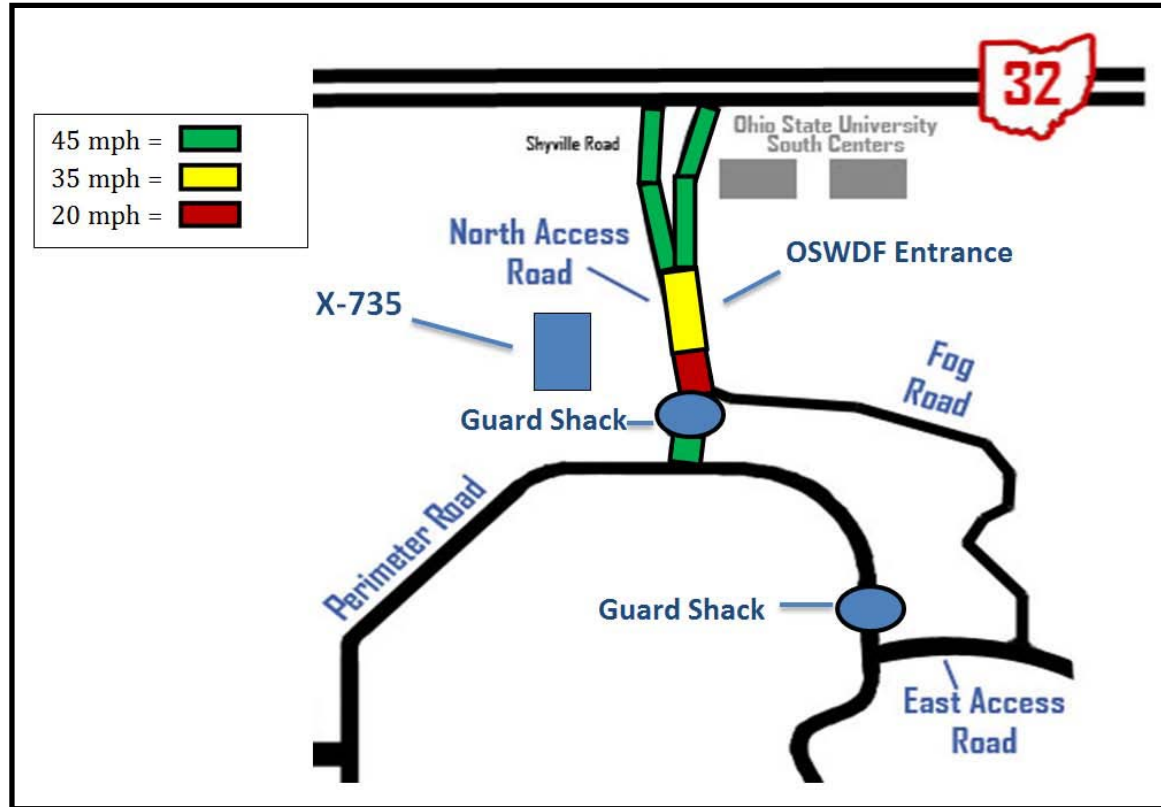
**Joel Bradburne, Site Lead  
U.S. Department of Energy**

**Portsmouth Site Specific Advisory Board  
May 5, 2016**



- Safety
- Plant Updates
  - X-326 Deactivation
  - On-Site Waste Disposal Facility (OSWDF)
  - Land Transfer
- Community Outreach
- Upcoming Events

# D&D Safety Update

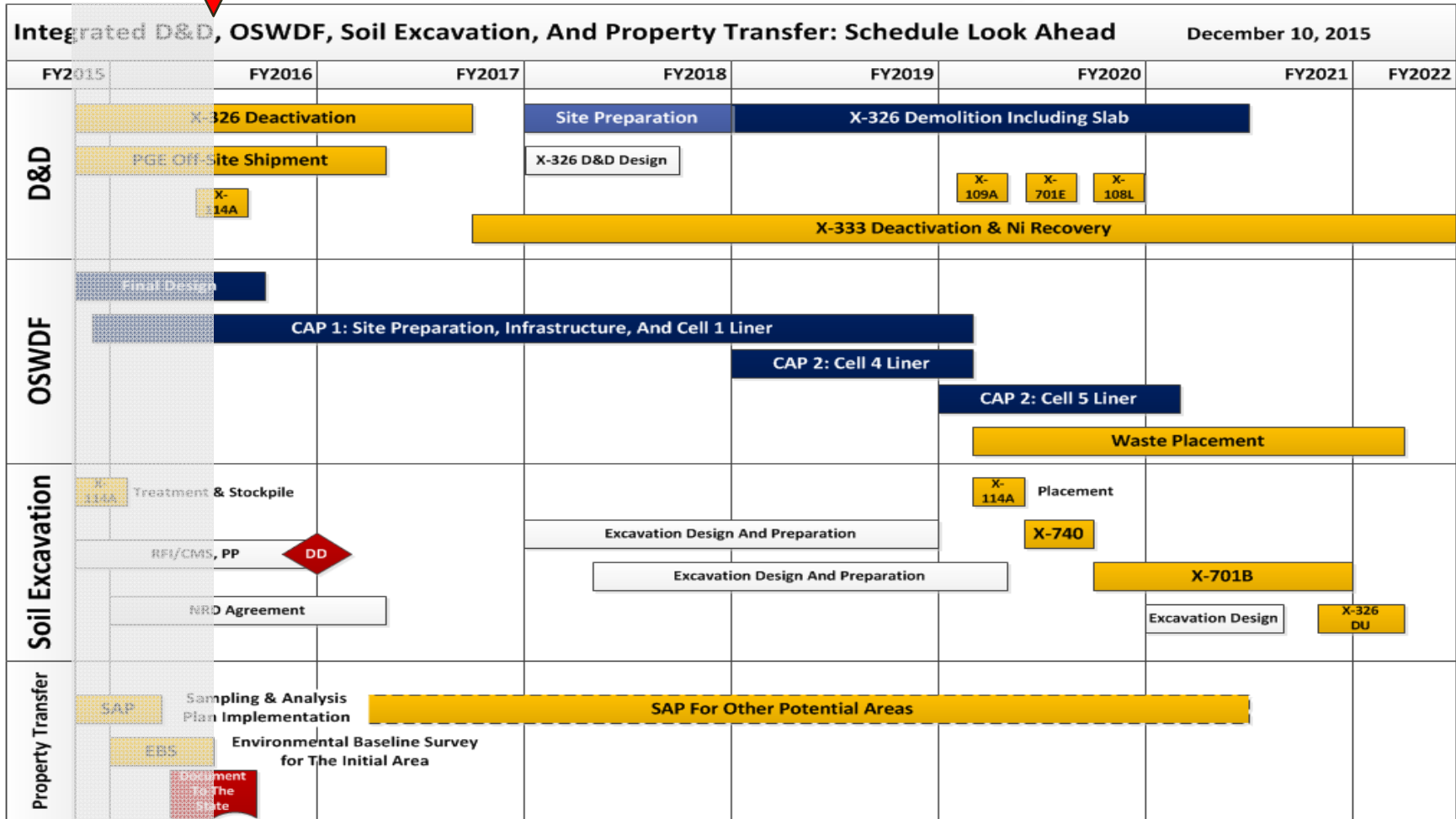


**YOU are the KEY to SAFETY!**



# PORTS Integrated Baseline

## Next 5 Years

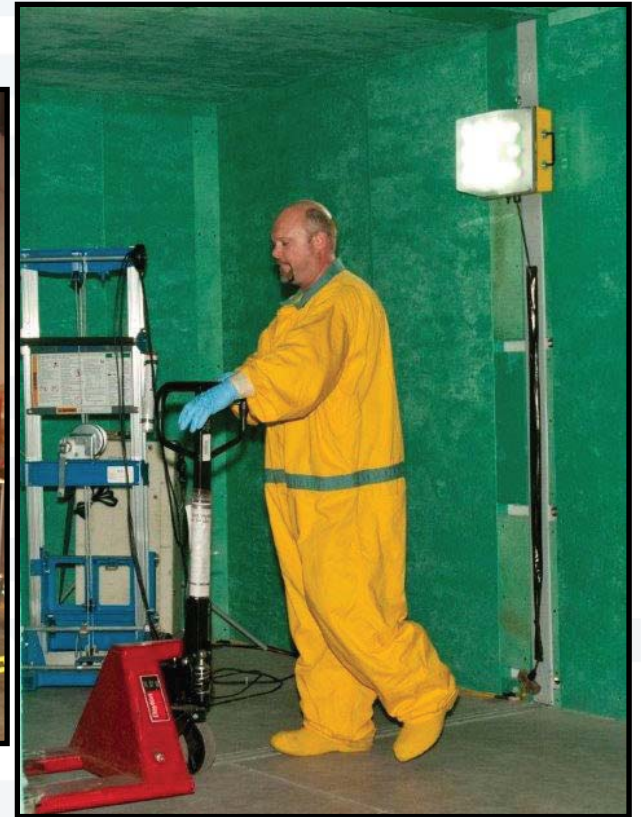




# Deactivation of - X-326



# Final Component Removed From X-326 Cell Floor



# Lot 4A Finished





# P-48 Overpacks Ready for Reuse





# X-690 Steam Plant Upgrades





# Prairie Burn



# On-Site Waste Disposal Facility

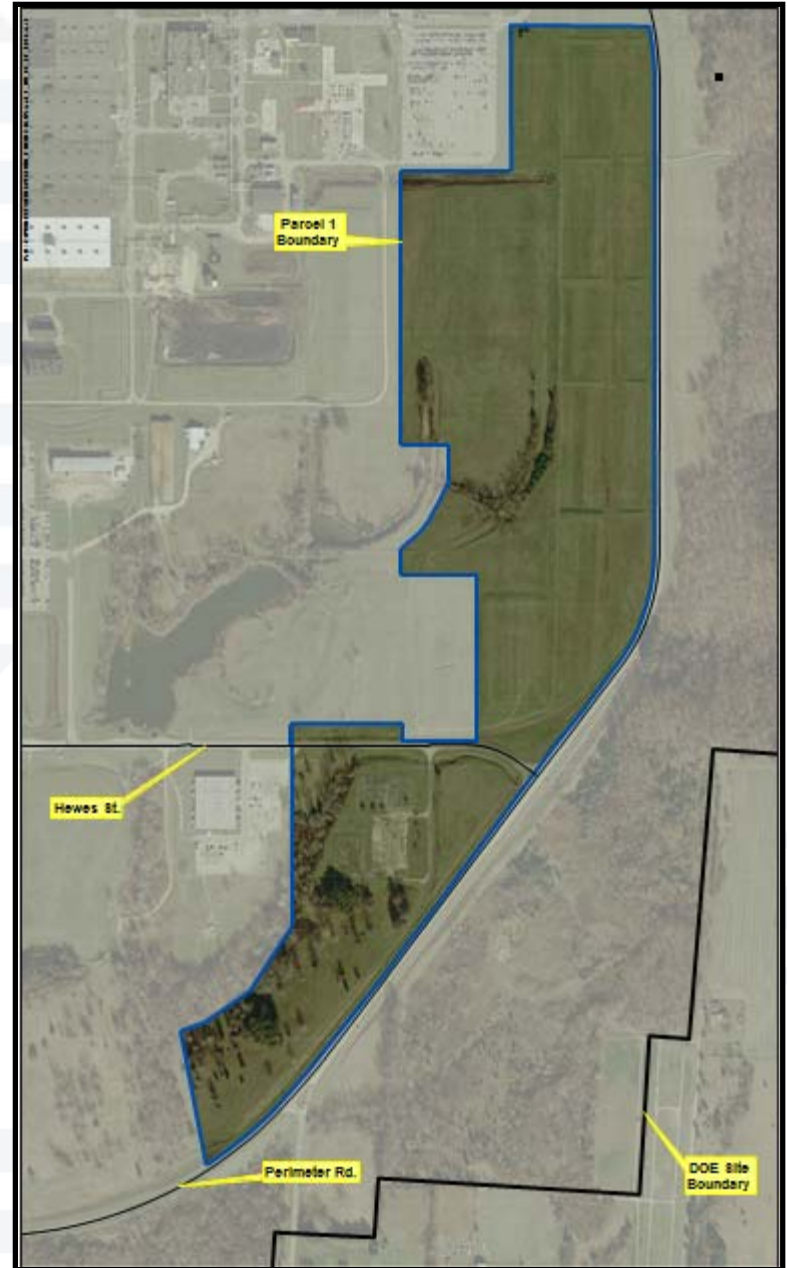


## Tree Clearing Statistics

Safety Statistics	
Man-hrs worked thru 1/20/16	8080
Lost Time Accidents	0
Recordable Cases	0
First Aid Cases	0
Project Statistics	
Start Date	November 10, 2015
Finish Date	January 12, 2016
Total Project Acres	294
Total Forested Acres	205
Average Loads Per Day	16.78
Peak Loads Per Day	26
Total Truck Loads	755
Total Log Trucks	349
Total Chip Trucks	406
Total Tons of Chips	11228.53

# Property Transfer

- SODI has delivered a formal request for approximately 97 acres of property.
- PPPO finalizing property transfer protocol.
- DOE met with Ohio EPA and Ohio Department of Health to discuss property transfer activities.



# Environmental Remediation



Groundwater Treated FY2016	Groundwater Source	TCE Removed FY2016 lbs.
1,301,400 Gallons	X-701B Plume	47.68
43,725 Gallons	Misc. Site	0.13
5,449,770 Gallons	7-Unit Plume	66.28
10,441,700 Gallons	5-Unit & X-749/ X-120 Plumes & PK Drainage	14.17

# SSAB Fernald Tour



# Site Tours







# Science Bowl IV



# Community Outreach



**Ross County Christian Academy**



**Bluebird Workshop**



**United Way of Ross Co. Award**

# Community Outreach



**Award Winning Procurement Team**



**Innovative Solutions**



**AEP Ohio Awards Quality Site Certification to Zahn's Corner Industrial Park**

# Upcoming Site Events



Public Tour  
Saturday, May 21, 2016



Public Tour  
Saturday, June 18, 2016



SSAB Full Board Meeting  
Thursday, July 7, 2016

*For a full list of SSAB activities, check out the website at  
<http://www.ports-ssab.energy.gov>*

PREPARING THE FUTURE

# PORTS

D & D PROJECT

## X-333 Deactivation 101

**Dennis Carr, Project Director**

**James Miller, X-333 Project Director**

**Fluor-BWXT Portsmouth**

**May 2016**

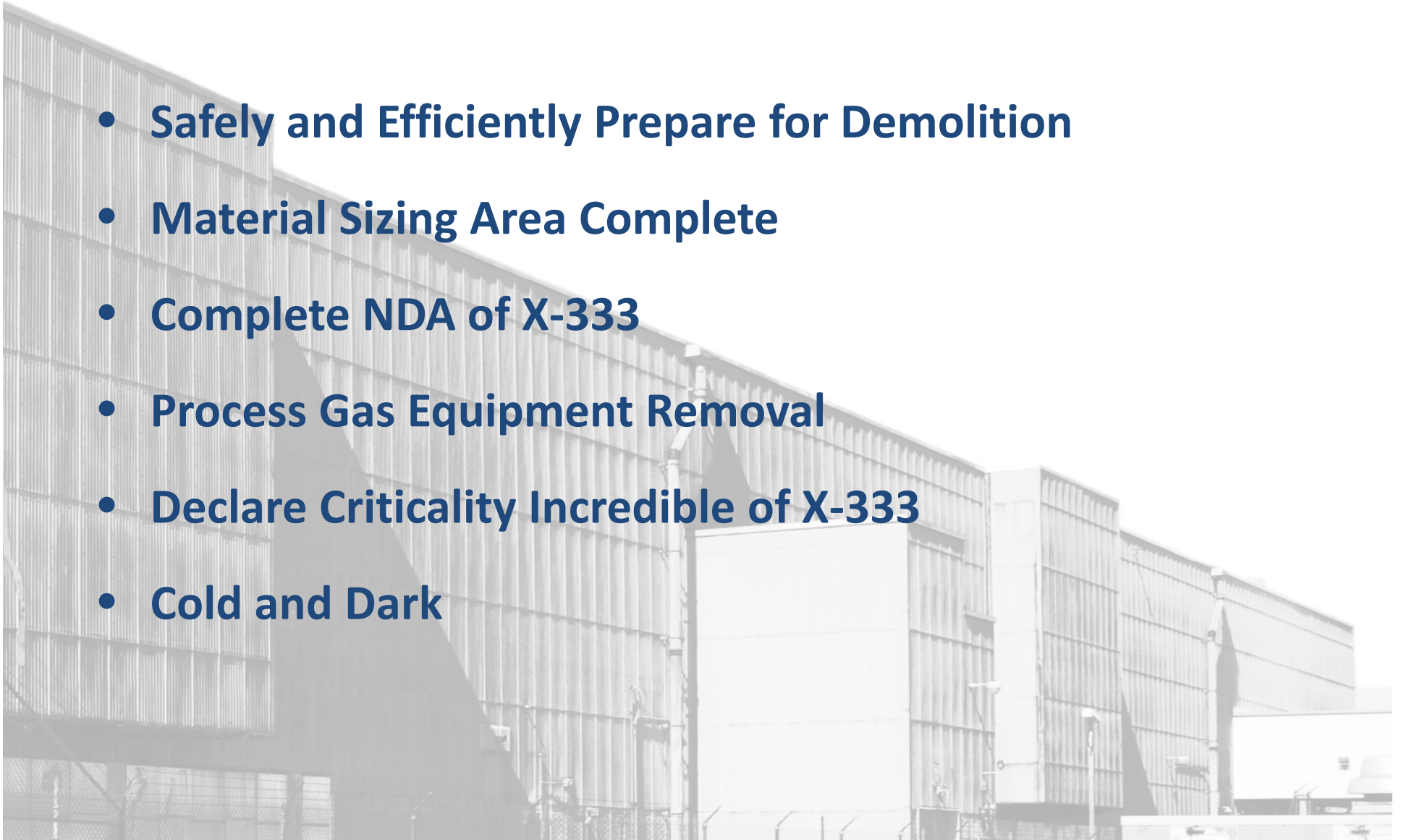


X-333 Building



# X-333 Project Objectives

- **Safely and Efficiently Prepare for Demolition**
- **Material Sizing Area Complete**
- **Complete NDA of X-333**
- **Process Gas Equipment Removal**
- **Declare Criticality Incredible of X-333**
- **Cold and Dark**



# X-326 vs. X-333



- **Size of Facility**
- **Size of Components**
- **Volume of Components**
- **Assay of Material**
- **Trained Crew**
- **Lessons Learned**

# X-333 Size Comparisons



## Area

- ~49 football fields can fit between the ops and cell floors (~24 per floor)



## Wire/Cable ~240 miles (1.3M feet )

- Volkswagen beetle (14 ft) = 90,514 beetles end to end
- 1,280 cruise ships end to end
- Cattle = 146,215 head of cattle (end to end), stacked on Top = 253,440 head of cattle

## Piping ~214 miles (1,127,381 feet)

- School bus (40 ft) = 28,185 buses end to end
- ~1,141 cruise ships end to end
- Enough piping to stretch from Piketon to Cleveland with some left over



## Weight – 250M lbs.+

- School Bus = 10,000 buses
- Cruise Ship = 1 ship by weight
- Cattle = 156,987 head of cattle (female)





# Cell Arrangement

**X-333**

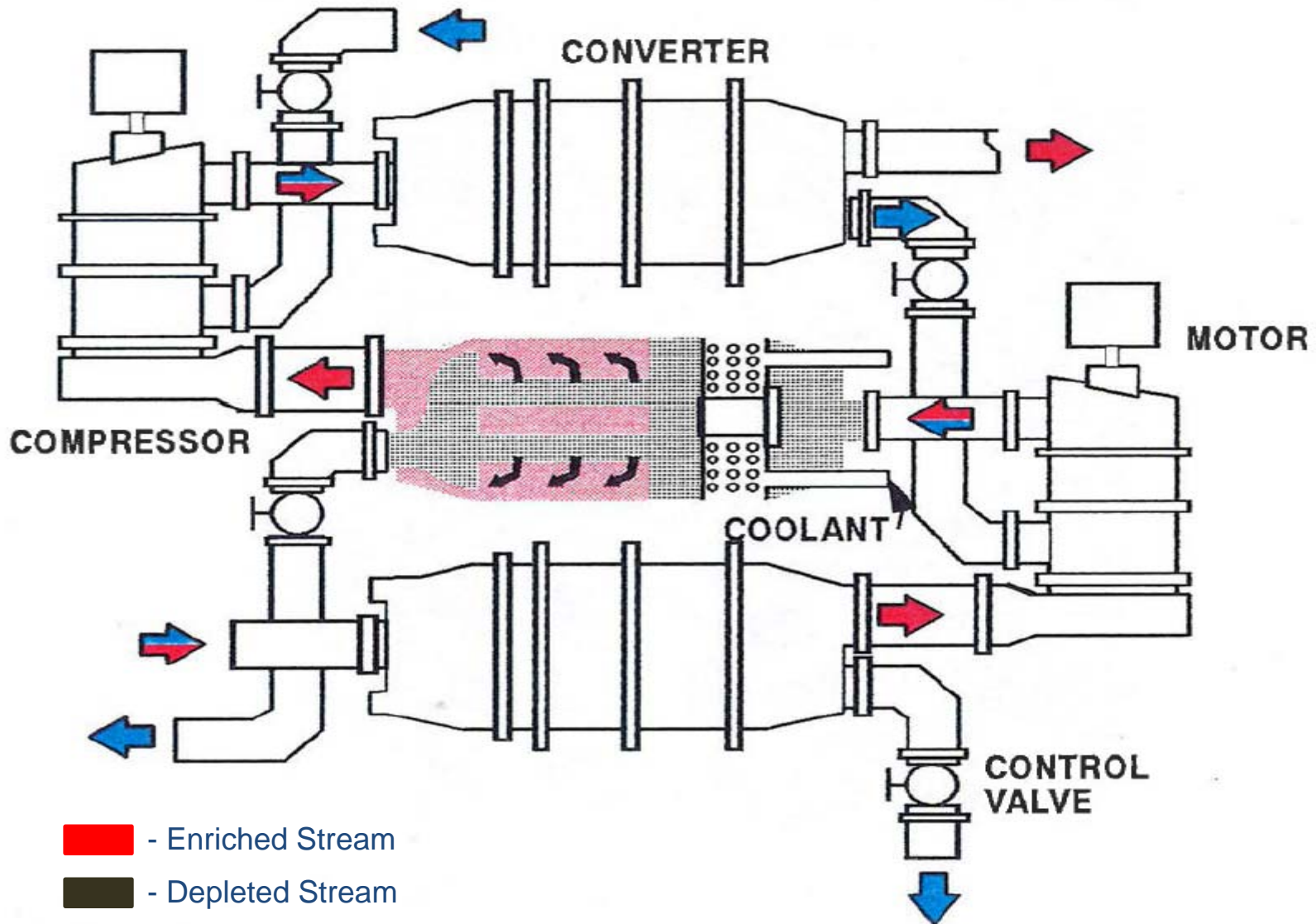
Unit 33 - 5	Unit 33 - 4
Unit 33 - 6	Unit 33 - 3
Unit 33 - 7	Unit 33 - 2
Unit 33 - 8	Unit 33 - 1

**X-326**

Unit 27 - 1	Unit 27 - 2	Unit 27 - 3	Unit 25 - 1	Unit 25 - 2	Unit 25 - 3	Unit 25 - 4	Unit 25 - 5	Unit 25 - 6	Unit 25 - 7

# Cell Arrangement

## Uranium Enrichment Stage



# Converters

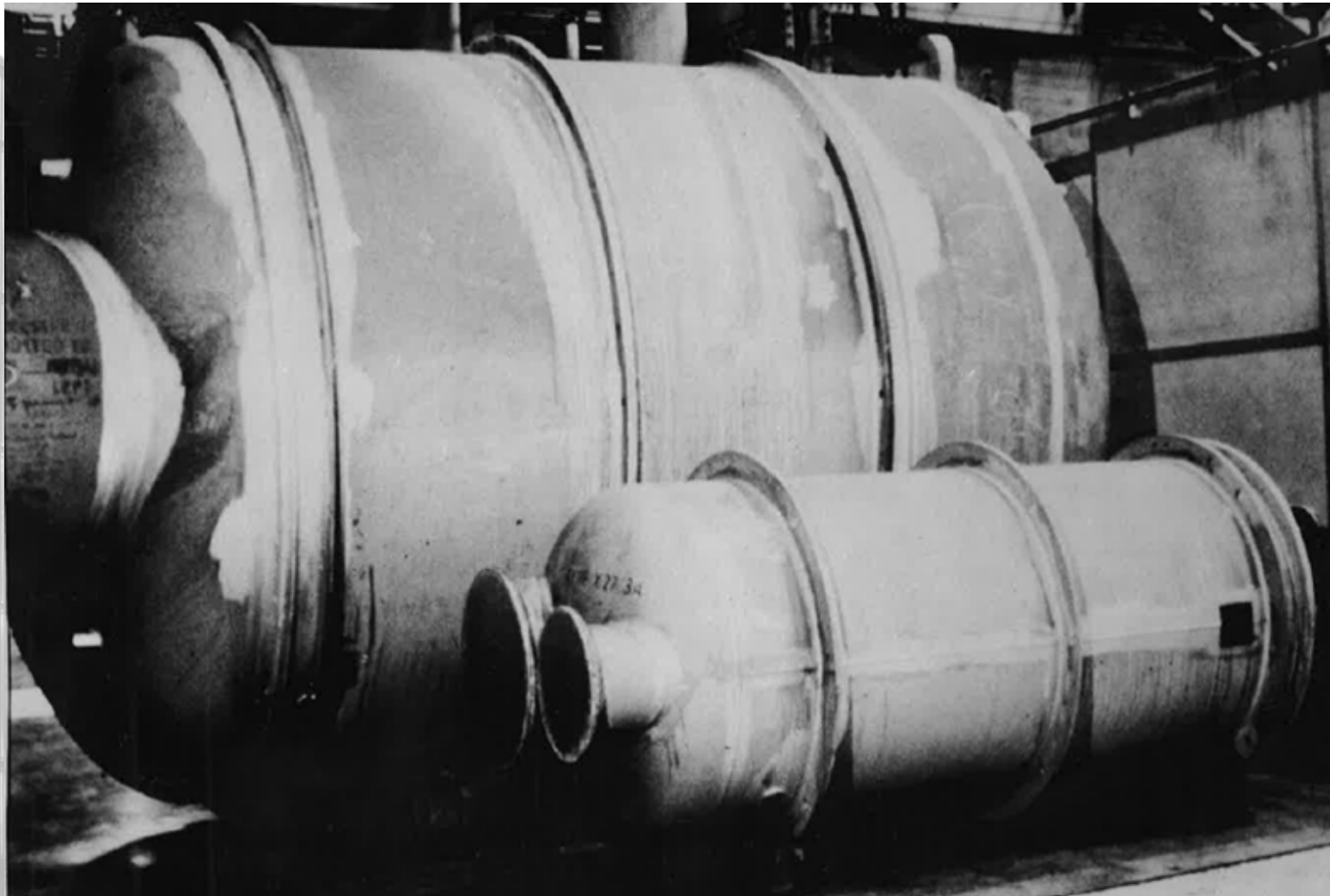
The converters from the X-326 are **1/5** the size of converters from the X-333 facility.



# Converters



# Converters



# Compressors



# X-333 Safety Hazards

- **Contaminants**
  - Hydrofluoric Acid (HF)
  - Asbestos
  - Exposure (Uranium)
- **Heavy Equipment**
  - Plasma cutters
  - Forklifts
  - Scaffolding
  - Automated Cutting Equipment



# Questions?





**Environmental Management Site Specific Advisory Board  
Recommendation:  
Community Investment as Factor in Contract Proposal Evaluation Process**

**Background**

Communities across the country have been adversely affected by the legacy of research and development of nuclear capabilities that occurred during the World War II and Cold War eras. The resulting cleanup of contaminated areas in these communities is on-going and managed by the U.S. Department of Energy's Environmental Management Program (DOE EM). To date, billions of dollars have been spent on cleanup activities, and this work by DOE EM contractors will continue far into the future. The EM Site Specific Advisory Board (EM SSAB) believes that contractors be encouraged by DOE EM to become good stewards by investing resources back into the communities that serve them.

**Observation**

Whether it is for scholarships to local students, goods purchased from local stores, resources provided to local food banks, or community development grants, these efforts give back to the community. By investing in affected communities, the DOE EM contractors help revitalize those communities and foster healthy relationships between the DOE and local stakeholders.

**Summary**

DOE contractors can impact EM communities, and the EM SSAB asks DOE to encourage those practices by making community investment provisions part of the evaluation criteria for cleanup contracts.

**Recommendation**

The EM SSAB recommends that DOE EM:

- 1) Incorporate "planned investment within the community" as a weighted factor in the proposal evaluation process of all contractors.
- 2) Provide information to local boards on community investment provisions included in Requests for Proposals.

## **EM SSAB Funding**

### **Background**

The Environmental Management Site Specific Advisory Board (EM SSAB), comprises 200+ individuals from eight regional Advisory Boards from Georgia, Idaho, Kentucky, Nevada, New Mexico, Ohio, Oregon, South Carolina, Tennessee and Washington. These Advisory Boards cumulatively represent a stakeholder population of millions of people affected by waste generator sites, transportation routes, and waste disposal areas.

EM SSAB members commit their time and resources as volunteers to help further the U.S. Department of Energy Office of Environmental Management (DOE EM) cleanup goals. Resources are required to ensure the ability of the individual boards to meet the expectations of the DOE, local stakeholders and the public.

### **Recommendation**

The EMSSAB recommends:

- Funding for each of the member boards that comprise the EM SSAB needs to be at an adequate level to fulfill obligations and commitments in order to --
  - o Provide informed recommendations on DOE EM cleanup
  - o Provide the diverse public with meaningful opportunities to influence cleanup decisions through an open and transparent process