

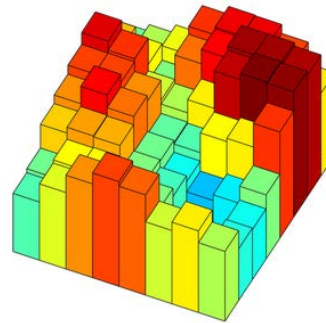
Do you see advantages to engaging in the Pacific Regional Ocean Uses Atlas (PROUA) efforts?

What are the most meaningful differences between the PROUA and Territorial Sea Plan (TSP) ocean use mapping approaches? Are the approaches complementary?

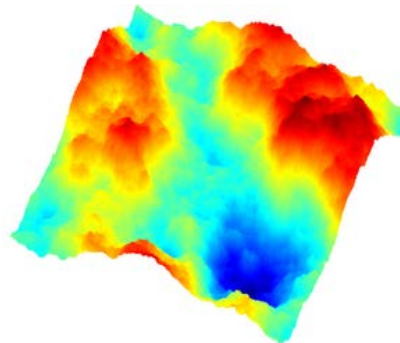
Can the information from the PROUA and TSP mapping efforts be cross-walked?



NOAA Ocean Uses Team will map the full range of relevant ocean uses on the OCS at a coarse-grained resolution



Will also map select uses in up to 8 areas on the OCS and the adjacent Territorial Sea at a fine-grained resolution



Fine-grained mapping = more detailed mapping of specific uses and their local variants in discrete locations

Higher-resolution mapping will involve:

- Identifying areas of interest
- Identifying select uses to be mapped and analyzed
- Further analysis of existing data on select uses
- Subsequent analysis of use characteristics



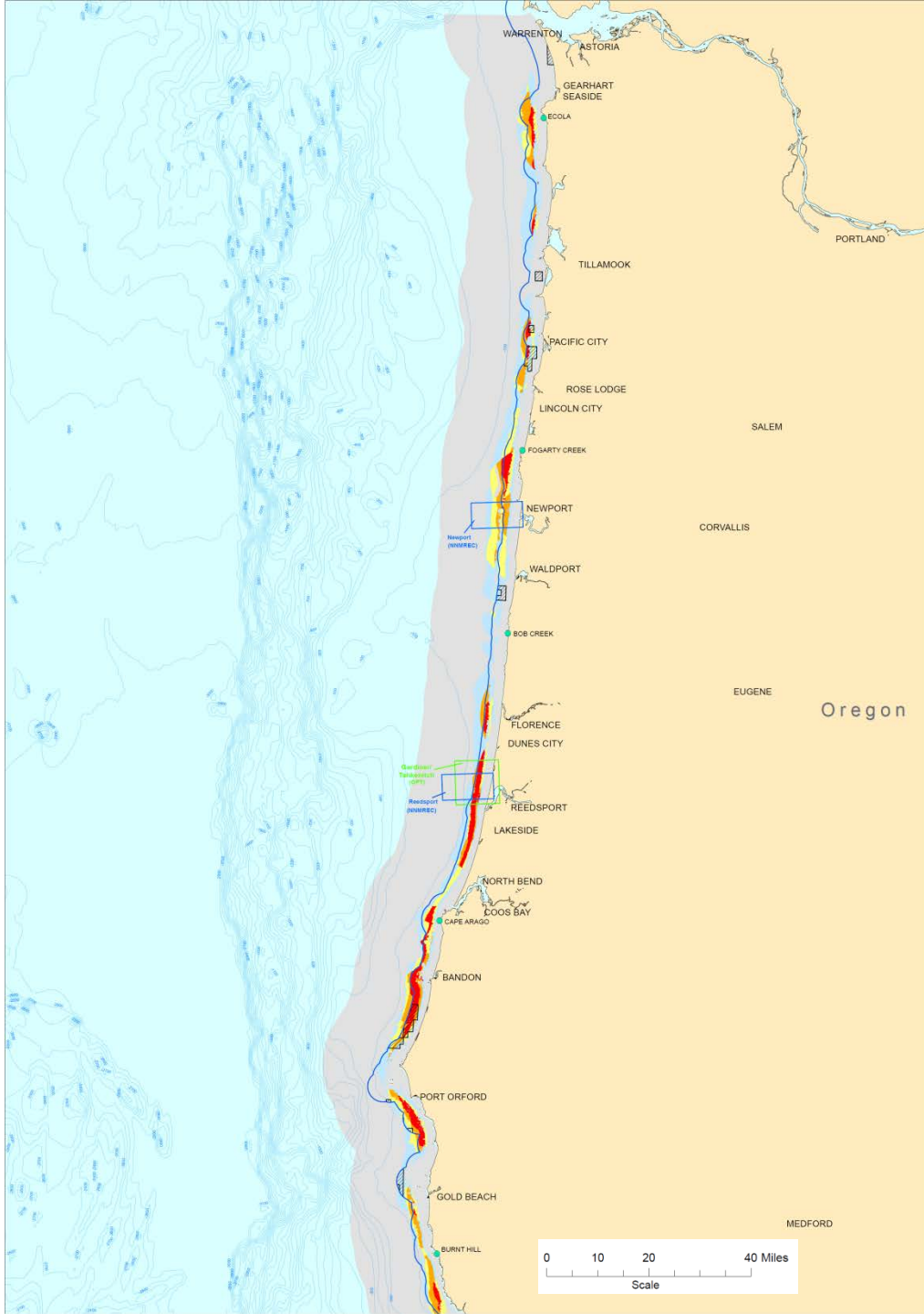
What areas or uses should be mapped at a finer-scale resolution?

Considerations:

- Inform wave and wind energy
- No size restrictions, per se
- High-suitability renewable energy areas
- Low-conflict areas where further documentation of uses could support ocean energy development
- Uses that may interact with renewable energy infrastructure or activity
- Add qualitative user perspective to certain areas

Ultimate goal: inform renewable energy planning on the OCS



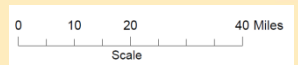


Legend

- MARINE Sites
- NNMREC Feasibility Study Sites
- OPT Identified Sites
- Submerged Lands Act Boundary (SLA)
- TSP Areas of Consideration (approximate)
- 100 Meter Bathymetric Contours

OWET Deep Water Suitability Sites

- All other values (>0)
- Top 41%
- Top 20%
- Top 11%
- Top 5%





Sara Gultinan

Leasing Specialist

Bureau of Ocean Energy Management

Pacific OCS Region

805-389-7619

sara.gultinan@boem.gov

www.boem.gov

Click links to reach Pacific OCS Region website:

About BOEM

About Regions

Pacific Region

