

# Oregon's Territorial Sea Plan & MarineMap

**Paul Klarin and Andy Lanier**  
**Department of Land Conservation and Development**  
**August 2011**

# **TSP Phase 2. Spatial Mapping Process**

## **Data Collection and Tool Development Status**

- **Commercial and recreational fisheries data collected through local advisory committees for areas important to fisheries (Winter 2011)**
- **Ecological data: Oregon Dept Fish and Wildlife and The Nature Conservancy (Summer 2011)**
- **Seafloor bathymetric and image data (Summer 2011)**
- **Recreational ocean use: on-line surveys (Fall 2010)**
- **Other spatial data on human uses, managed resources, physical conditions, and shoreland facilities (Fall 2010)**
- **Oregon MarineMap (January 2011)**

# Territorial Sea Planning for Renewable Energy Siting Amendment Process Timeline

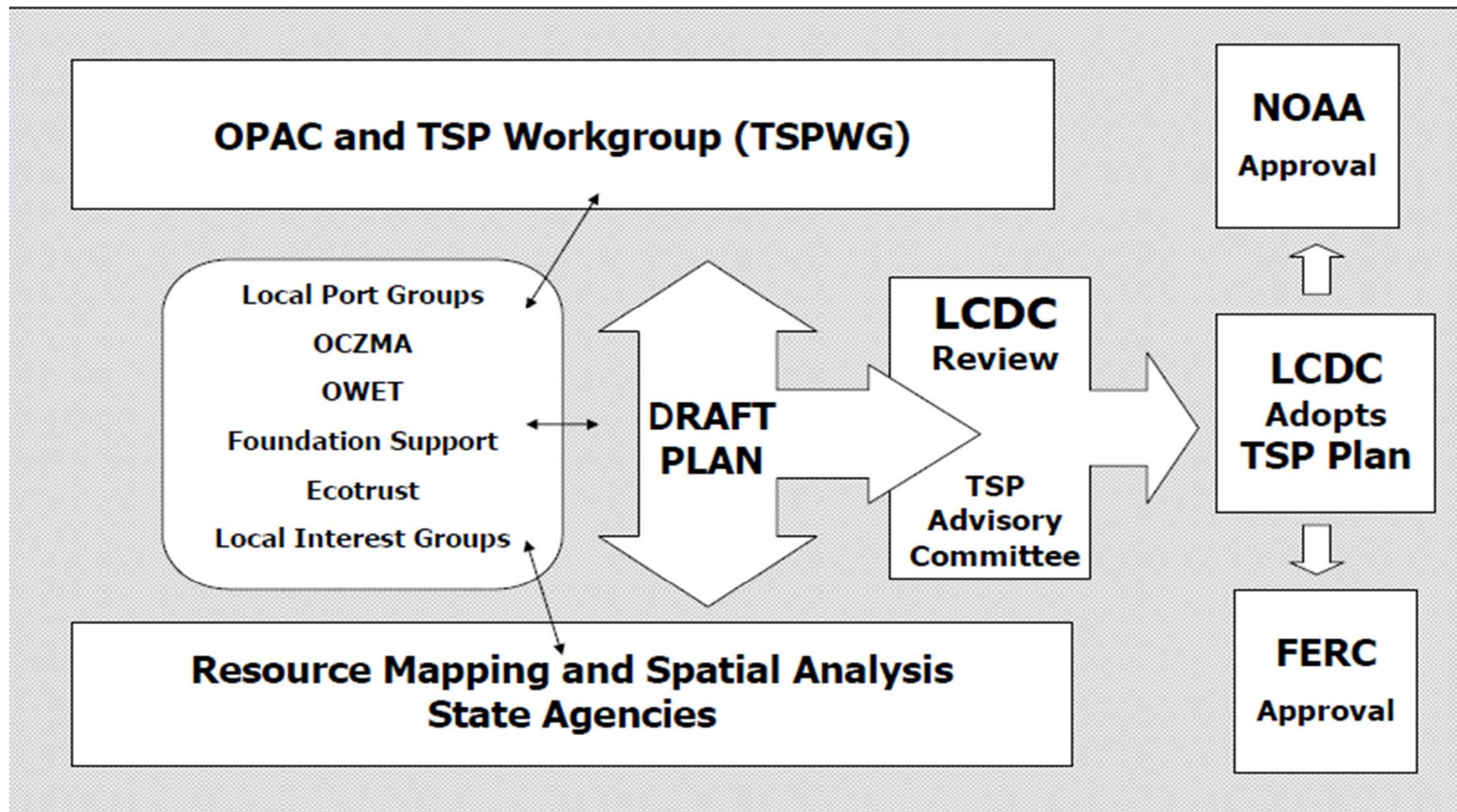
2008

2009

2010

2011

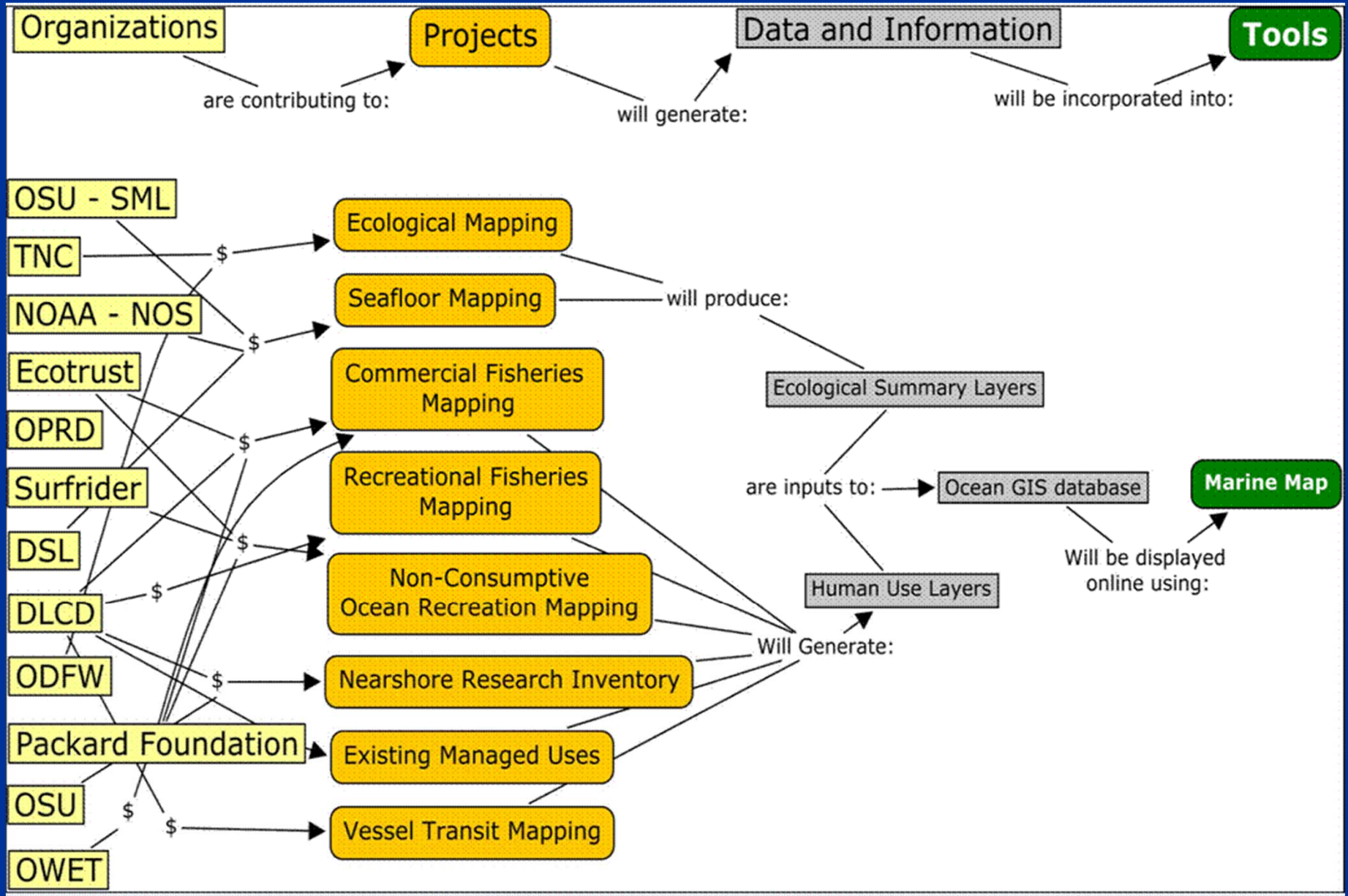
2012



# Oregon TSP Partnerships

- State Agencies: DLCDD/ODFW/DSL/OPRD
- Federal agencies: FERC, BOEM, NOAA, NMFS
- OCZMA: local governments, ports and special districts
- Community Advisory Committees (Renewable Energy)  
POORT, SOORC, FINE, FACT, NSAT, FOORC
- OWET
- OPAC \ STAC
- Ecotrust
- Surfrider Foundation
- Conservation Community (TNC, OSCC, Our Ocean)

# The Moving Parts of TSP: Technological Roadmap



# Overview: Geospatial Analysis to derive Areas Protected by Goal 19

Data Layers Intersected with the Planning Grid



Areas of Opportunity (to be evaluated)

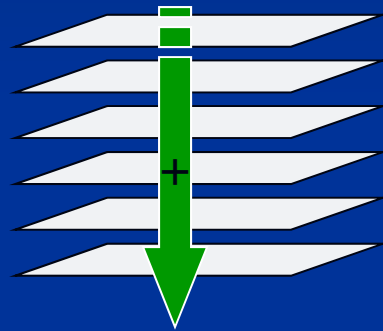


## Goal 19 Criteria

Areas of Biological or Ecological Importance.

Identify Areas of Importance to Fisheries

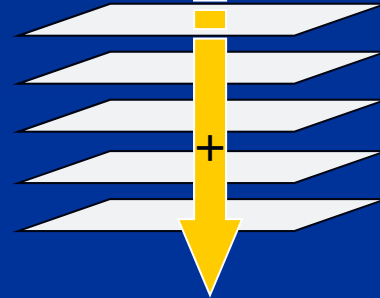
Existing Uses or Areas for special management.



B&E Exclusion Areas



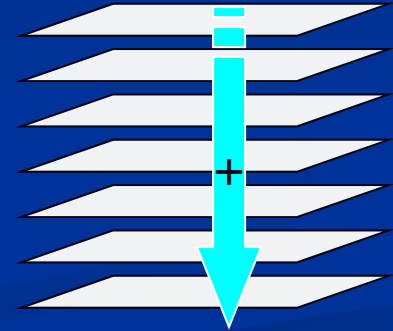
+



Fishery Exclusion Areas



+



Current Use or Management Exclusion Areas



+

=

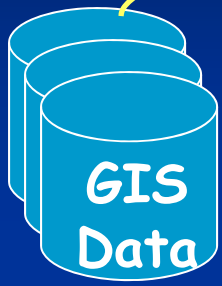


Areas of Protection under Goal 19

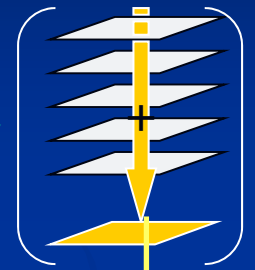
# Spatial Planning Feedback Loop

Planning Grid Overlays

Started Here



Summary Map Layers



LCDC  
TSPAC



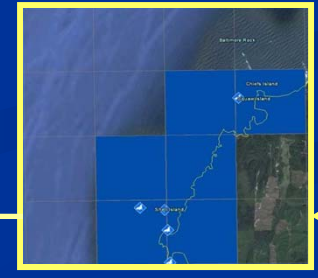
TSP  
Work  
Group



Areas of  
Opportunity



Goal 19  
Selection Areas



We Are Here

Public Input

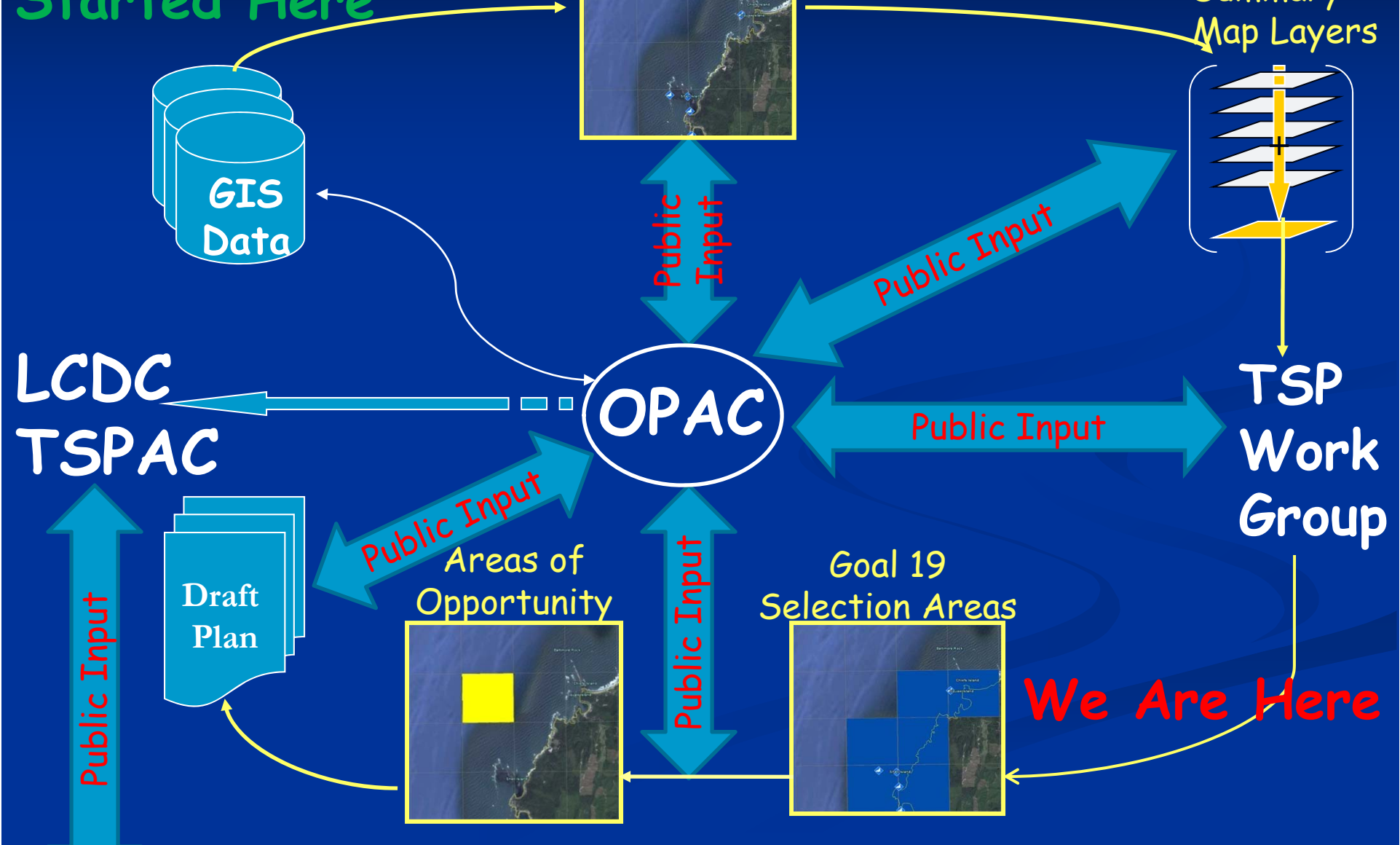
Public Input

Public Input

Public Input

Public Input

Public Input



# Decision-Support Tools

**MarineMap Decision Support Tool**

Decision Support for Marine Spatial Planning

Decision Support Tool

MarineMap offers users web-based access to all of the data, methods and analyses that scientists utilize to evaluate Marine Protected Areas (MPAs). Without special training or assistance, working in a group setting or at home, MarineMap users can draw, evaluate and discuss prospective MPAs.

MarineMap Decision Support Tool (DST) allows you to:

- Visualize social and ecological attributes of coastal areas
- Draw and assemble networks of prospective MPAs
- Specify types of regulations to be applied to each MPA, as well as goals and objectives fulfilled
- Generate reports that assess MPAs according to scientific guidelines as well as social and economic impacts
- Share MPA boundaries and networks with other users
- Discuss results with others in online forum

**Marxan**

Informing Conservation Decisions Globally

Marxan is freely available conservation planning software. It provides decision support to a range of conservation planning problems, including:

- the design of new reserve systems
- reporting on the performance of existing reserve systems
- developing multiple-use zoning plans for natural resource management

What makes Marxan the most widely used conservation planning software in the world?

Marxan is flexible- it can be applied to a wide range of problems such as reserve design and

Image State of Oregon  
Data SIO, NOAA, U.S. Navy, NGA, GEBCO  
© 2010 Google  
Image U.S. Geological Survey  
46°30'18.50" N 125°05'35.15" W elev -4719 ft  
Eye alt 20.85 mi



# MarineMap Demonstration

- <http://Oregon.MarineMap.org>