



Western Pacific Regional Fishery Management Council

CCC Meeting, February 19-20, 2014

DATA DATA DATA!!!

1. ACLs
2. Leveling the Playing Field in International Fisheries
3. Fisheries Development
4. Protected Species

A large school of dark fish, possibly snappers, swimming in clear blue water above a coral reef. The fish are densely packed and moving in various directions. The background shows the intricate structures of the coral reef below.

Annual Catch Limits

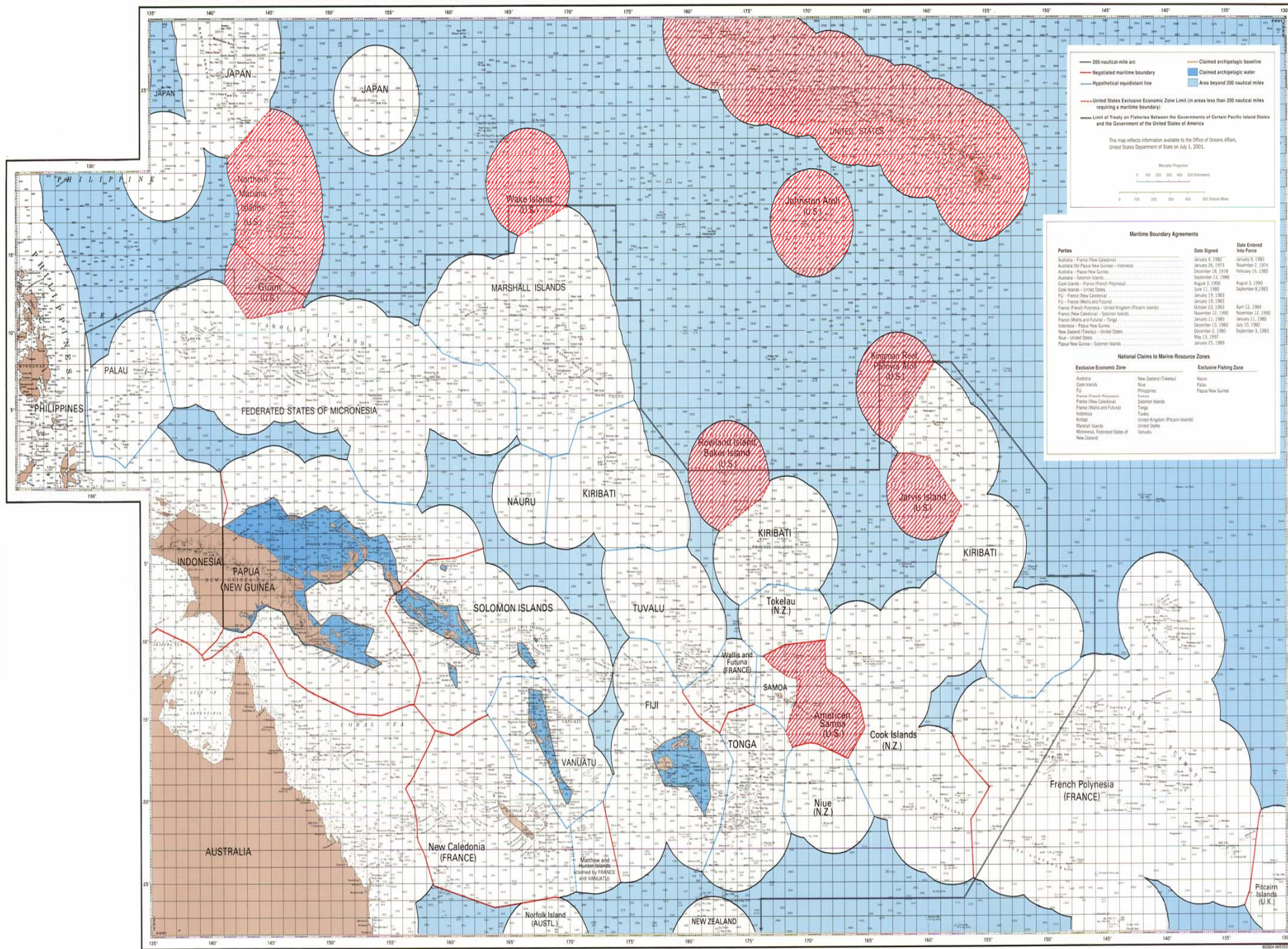
- Improving model based approaches and species level aggregations for ABC/ACL Specifications
- Improving accountability measures by real-time or near real-time data collection and synthesis
- Improve Federal/State coordination to implement complimentary rule-making

Leveling the Playing Field in the International Fishery Arena

- **Seek better compliance by other WCPFC Commission members, especially provision of operational level data similar to US**
- **Continue to address the issues stemming from IUU Fishing**
- **Development of Spatially Explicit Management Measures for Bigeye Tuna in WCPO**
- **Evaluate True Extent of PICs ‘Disproportionate Burden’ from WCPFC CMMs**

Claimed and Potential Maritime Zones in the Central and South Pacific

3rd revision, July 2001



Map Information:

This map reflects information available to the Office of Ocean Affairs, United States Department of State on July 1, 2001.

Map Scale: 0 100 200 300 400 500 Kilometers / 0 100 200 300 400 500 Nautical Miles

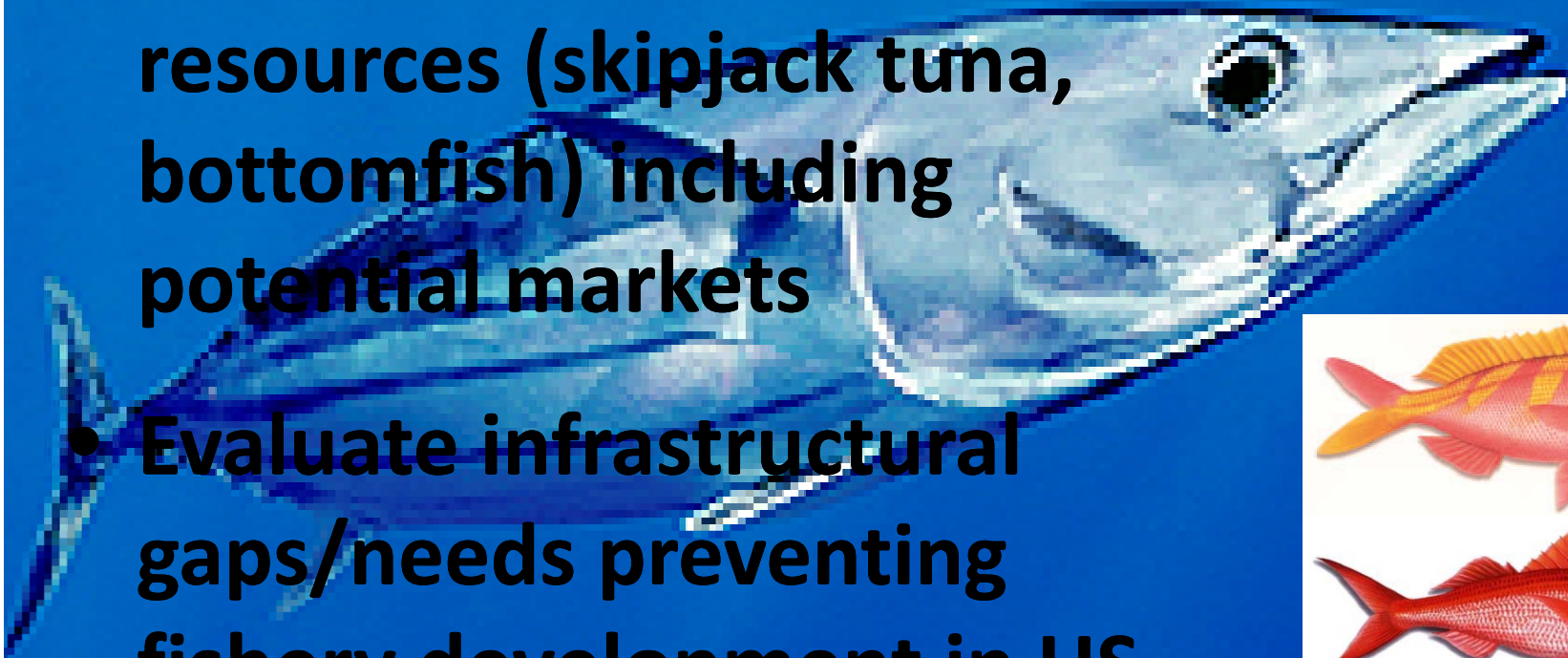
Maritime Boundary Agreements

Parties	Date Signed	Date Entered into Force
Australia - France (New Caledonia)	January 8, 1987	January 9, 1988
Australia - Papua New Guinea - Indonesia	January 26, 1979	November 2, 1979
Australia - Papua New Guinea	December 16, 1978	February 21, 1980
Australia - Solomon Islands	September 13, 1980	August 1, 1981
Cook Islands - United States	July 11, 1980	September 8, 1983
France - New Caledonia	January 19, 1983	January 19, 1983
France - French Polynesia - United Kingdom (Pitcairn Islands)	October 23, 1983	April 12, 1984
France (New Caledonia) - Solomon Islands	November 12, 1985	November 22, 1990
France (Wallis and Futuna) - Tonga	January 11, 1980	January 11, 1980
Indonesia - Papua New Guinea	December 15, 1980	July 15, 1982
New Zealand (Tokelau) - United States	December 2, 1980	September 3, 1983
Niue - United States	May 12, 1990	May 12, 1990
Papua New Guinea - Solomon Islands	January 25, 1983	January 25, 1983

National Claims to Marine Resource Zones	Exclusive Economic Zone	Exclusive Fishing Zone
Australia	New Zealand (Tokelau)	Niue
Cook Islands	Niue	Palau
France	Philippines	Papua New Guinea
France (French Polynesia)	Solomon Islands	
France (New Caledonia)	Tonga	
France (Wallis and Futuna)	Tuvalu	
Indonesia	United Kingdom (Pitcairn Islands)	
Kiribati	United States	
Marshall Islands	United States	
Morocco, Contracted States of	Vanuatu	

Fisheries Development

- Evaluate underutilized fishery resources (skipjack tuna, bottomfish) including potential markets
- Evaluate infrastructural gaps/needs preventing fishery development in US Pacific Islands



Demersal Bottomfish

Protected Species

- Improve Council involvement and transparency in ESA Section 7 consultations through implementing the ESA Working Group recommendations
- Continue to request that NMFS improve the scientific rigor in marine mammal stock assessments