

# RECLAMATION

*Managing Water in the West*

## **Safety of Dams Project**

### **Mormon Island Auxiliary Dam (MIAD)**

### **RECREATION, SAFETY, AND**

### **CIRCULATION**

**Public Meetings -**  
**December 16 and 17, 2009**



U.S. Department of the Interior  
Bureau of Reclamation

# Recreation, Safety, and Circulation: Legal Context

**Some of the laws that address Recreation, Safety, and Circulation:**

- **National Environmental Policy Act (NEPA)**
- **California Environmental Quality Act (CEQA)**

# Recreation, Safety, and Circulation: **NEPA**

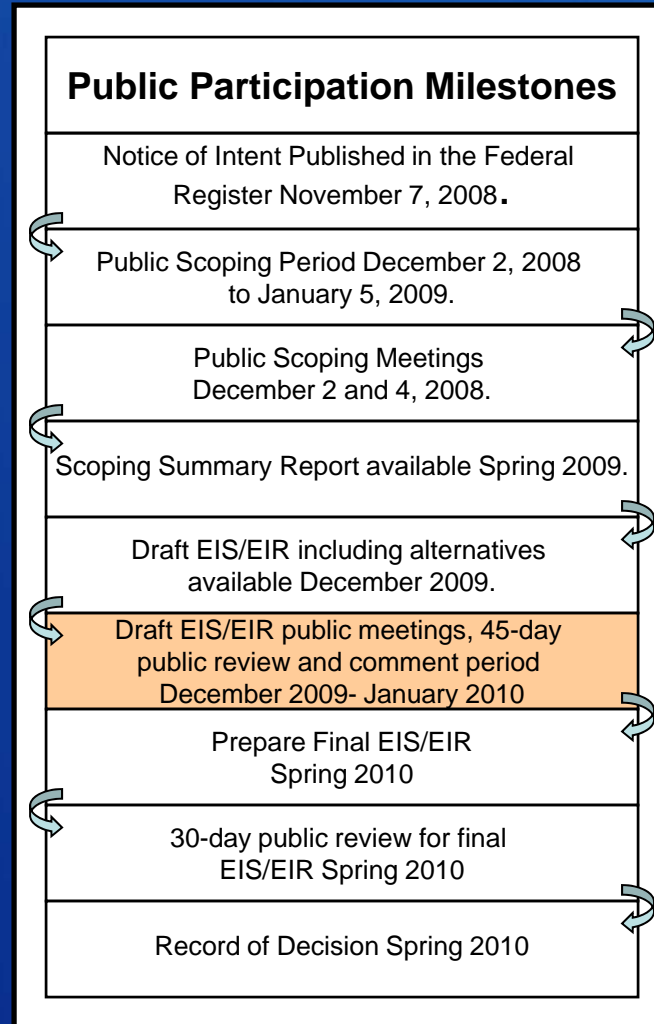
- **Completed by Reclamation prior to committing Federal resources to a project**
- **Requires the Federal agency to ‘take a hard’ look at those actions that affect the ‘human environment’**
- **Primarily a disclosure law**

**Project Website:**

**<http://www.usbr.gov/mp/jfp/index.html>**

**RECLAMATION**

# Timeline of NEPA Milestones



# Opportunities for Public Involvement

- **Attend public meetings**
- **Join the mailing list**
- **Visit project website**



Ranger Laura Trover with Campers on Bikes

- **Submit comments on the MIAD EIS/EIR**



# Recreation, Safety, and Circulation – Project Footprint Alternative 1

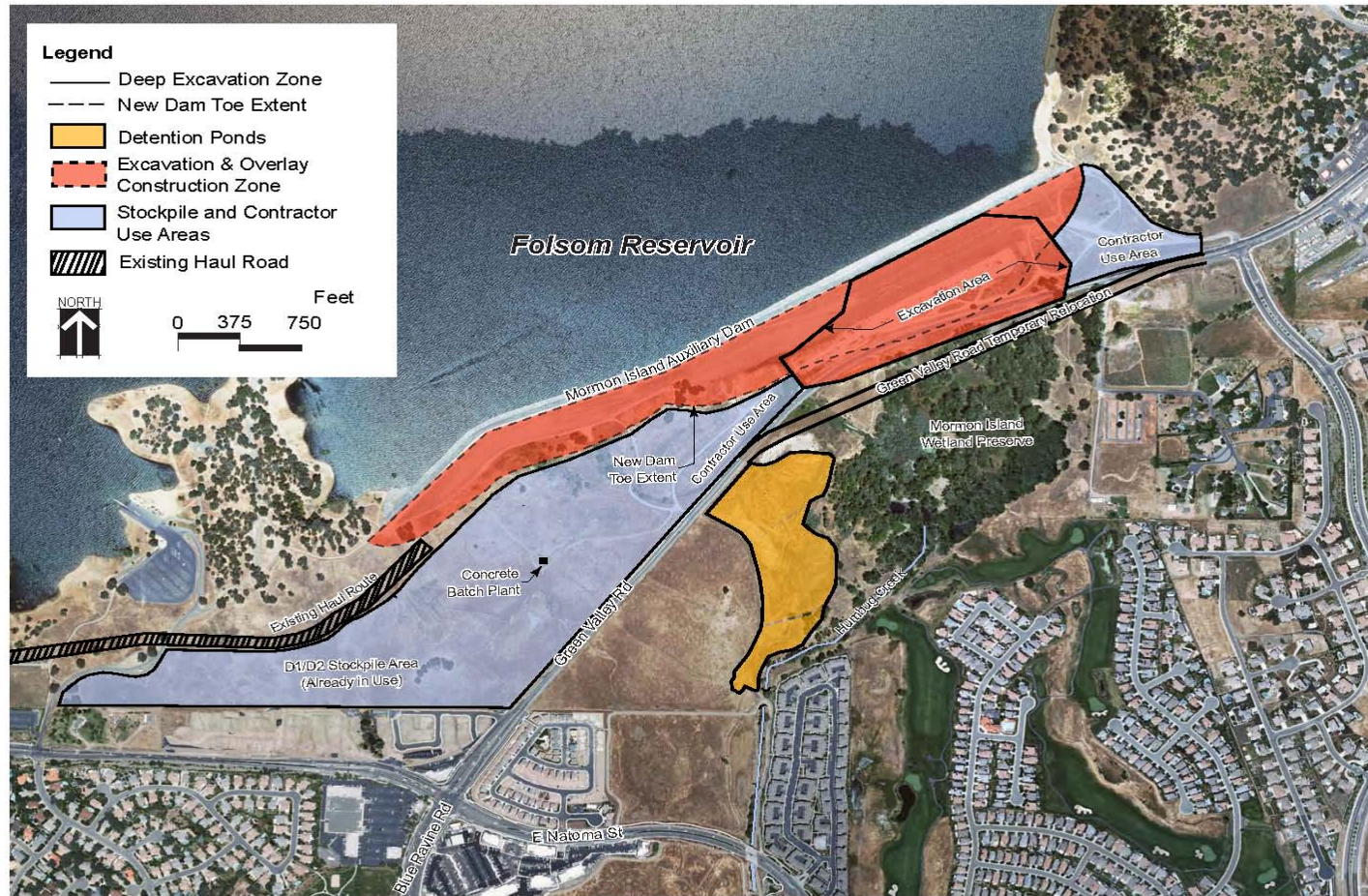


Figure 2-2. Alternative 1 - Mormon Island Auxiliary Dam Modifications



# Recreation, Safety, and Circulation – Project Footprint Alternatives 2,3 and 4

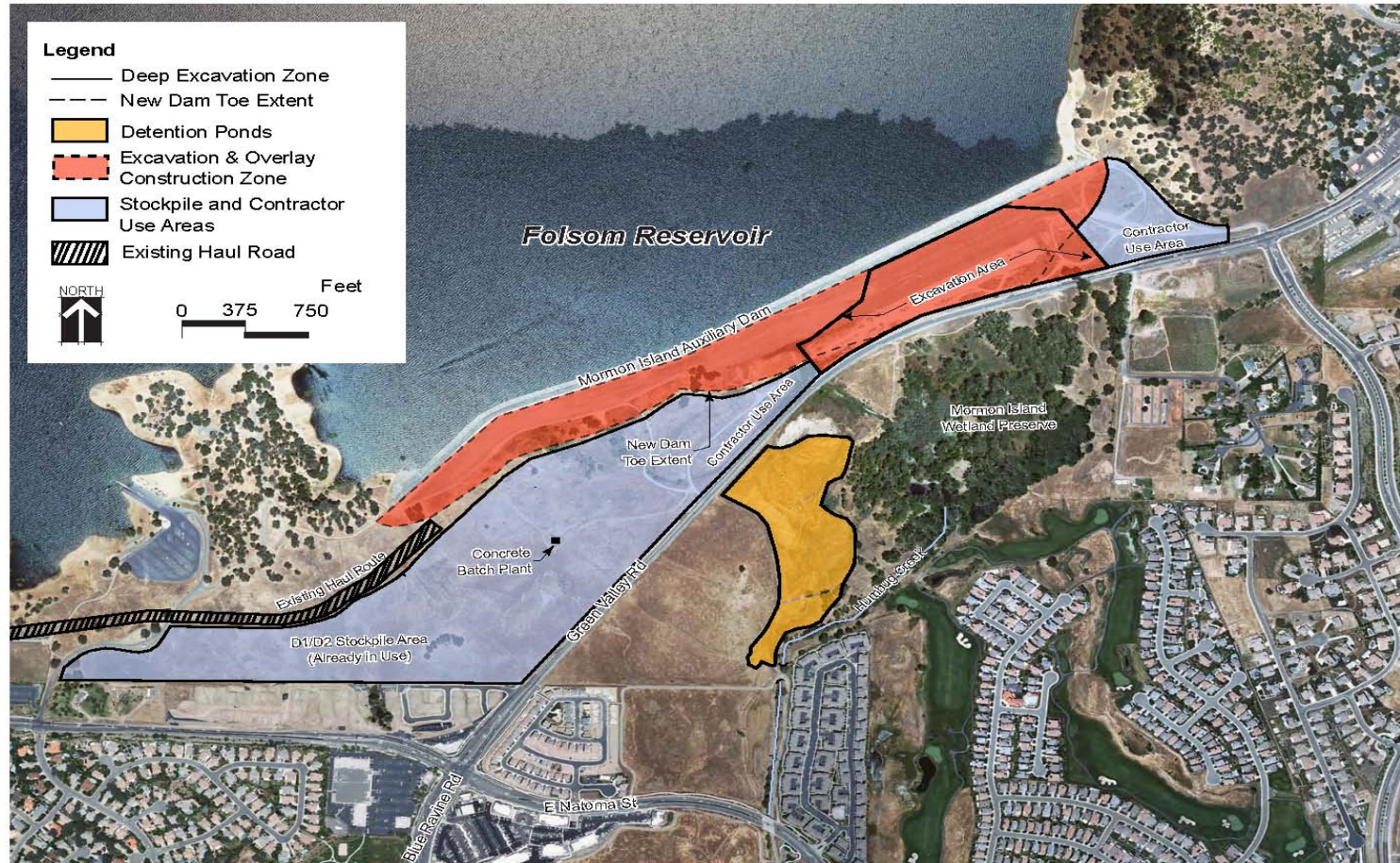


Figure 2-3. Alternatives 2, 3 and 4 - Mormon Island Auxiliary Dam Modifications

# Recreation, Safety, and Circulation – Trails



The Folsom Point/Brown's Ravine Trail is a multi-use trail that is a 4 mile long medium intensity use area of the SRA (in red)

RECLAMATION



# Recreation, Safety, and Circulation: Green Valley Road



- **Within the MIAD project area, Green Valley Road is a two-lane undivided highway with a 45-mph speed limit.**
- **Presently, Green Valley Road provides an “F” Level of Service (LOS F), representing the worst level of traffic conditions.**

# Recreation, Safety, and Circulation: Roads

<u>ROAD</u>	<u>LOS</u>
Green Valley Road	LOS F; worst level of traffic conditions
Blue Ravine Road	LOS C; average delays to motorists
E. Natoma Street from Cimmaron Circle to Folsom Dam Road	LOS F; worst level of traffic conditions
East Natoma Street from Folsom Dam Road to Green Valley Road	LOS E; limit of acceptable delay

# Recreation, Safety, and Circulation: Dam Safety During Construction

- **High water levels at Folsom Reservoir could occur during the period of excavation at the toe of MIAD.**
- **Excavation at the toe of MIAD would weaken the structural integrity of the dam, increasing the risk of failure.**



# Natural Resources: Contact

If you have questions or comments, please contact:

**Mathew See**  
**Natural Resource Specialist**  
**Central California Area Office**  
**Bureau of Reclamation**  
**msee@usbr.gov or (916) 989-7198**

Or For more information:  
<http://www.usbr.gov/mp/jfp/index.html>

RECLAMATION