

RECLAMATION

Managing Water in the West

Colorado River Accounting and Water Use Report Arizona, California, and Nevada

Calendar Year 2008



U.S. Department Of the Interior
Bureau of Reclamation
Lower Colorado Region

Mission Statements

The mission of the Department of the Interior is to protect and provide access to our Nation's natural and cultural heritage and honor our trust responsibilities to Indian Tribes and our commitments to island communities.

The mission of Reclamation is to manage, develop, and protect water and related resources in an environmentally and economically sound manner in the interest of the American public.

Colorado River Accounting and Water Use Report Arizona, California, and Nevada

Calendar Year 2008

Prepared by

**Lower Colorado Region
Boulder Canyon Operations Office**

**Paul Matuska, BCOO-4222
PO Box 61470
Boulder City, NV 89006-1470**

**Phone: 702-293-8164
FAX: 702-293-8042
Email: patuska@usbr.gov**



**U.S. Department of the Interior
Bureau of Reclamation
Lower Colorado Region
Boulder Canyon Operations Office
Water Conservation & Accounting Group**

August 2009

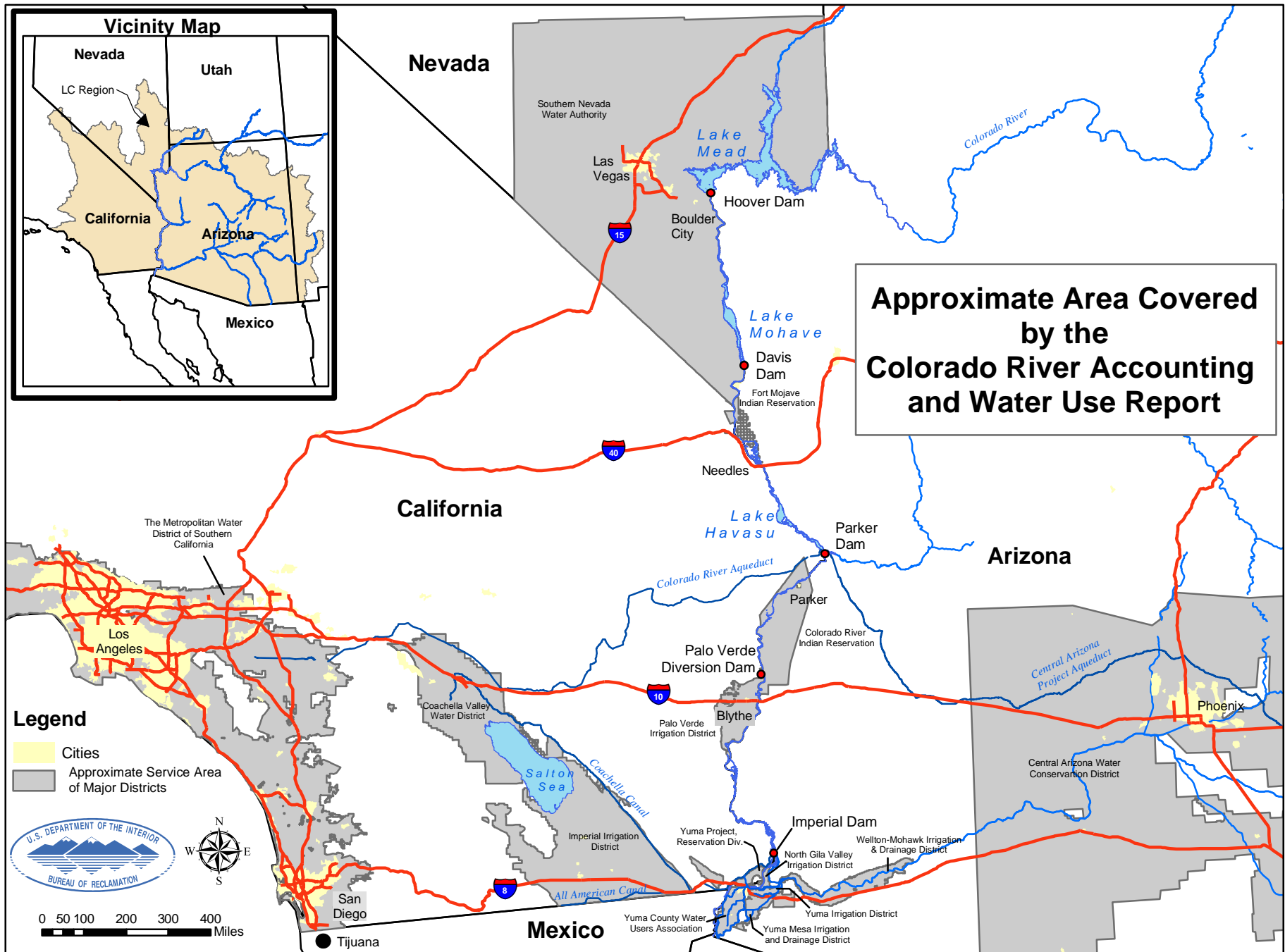


TABLE OF CONTENTS

| | |
|---|--------------|
| Location Map_____ | Frontispiece |
| Acronyms and Abbreviated Terms_____ | 1 |
| Summary_____ | 2 |
| Reservoir Contents_____ | 3 |
| Compilation of Records in Accordance with Article V of the Consolidated Decree of the United States Supreme Court in <i>Arizona v. California</i>, 547 U.S. 150 (2006) (Consolidated Decree) _____ | 4 |
| V (A) Records of Releases of Water Through Regulatory Structures Controlled by the United States_____ | 5 |
| V (B) Records of Diversions, Return Flows, and Consumptive Use_____ | 6 |
| Arizona Users Reporting Monthly_____ | 7 |
| Arizona Supplemental Tabulation_____ | 12 |
| California Users Reporting Monthly_____ | 13 |
| California Supplemental Tabulation_____ | 15 |
| Nevada Users Reporting Monthly_____ | 17 |
| V (C) Records of Water Ordered but not Delivered_____ | 19 |
| Arizona_____ | 20 |
| California_____ | 22 |
| V (D) Records of Deliveries of Water to Mexico_____ | 23 |
| V (E) Records of Diversions and Use for the Gila National Forest_____ | 24 |
| Information Supplemental to the Consolidated Decree _____ | 25 |
| Interstate Banking within the States of Arizona, California, and Nevada_____ | 26 |
| Inadvertent Overruns and Paybacks within the States of Arizona, California, and Nevada_____ | 28 |
| Summary of Water Availability and Use by State_____ | 33 |
| Lower Colorado Water Supply Project_____ | 35 |
| Conservation, Transfer, and Exchange Agreements_____ | 37 |
| Intentionally Created Surplus_____ | 44 |
| Collection of Significant Documents_____ | 46 |

Acronyms and Abbreviated Terms

These acronyms and abbreviations will be found in the text, footnotes, and headings within this document.

| | | | |
|--------|---|--------|--|
| AAC | All-American Canal | Ftns | Footnotes |
| AACLPL | All-American Canal Lining Project | FYIR | Fort Yuma Indian Reservation |
| af | acre-feet | GGMC | Gila Gravity Main Canal |
| ADP | Arizona diesel pump | ICUA | intentionally created unused apportionment |
| ADW | Arizona diesel well | I.D.D. | irrigation and drainage district |
| AEP | Arizona electric pump | IBWC | International Boundary and Water Commission |
| AEW | Arizona electric well | ICS | Intentionally Created Surplus |
| ALTSC | accumulated long term storage credit | IID | Imperial Irrigation District |
| AOP | Annual Operating Plan | IOPP | Inadvertent Overrun and Payback Policy |
| APS | Arizona Public Service | ISG | Colorado River Interim Surplus Guidelines |
| ASLD | Arizona State Land Department | IUS | Interstate Underground Storage credits |
| Assn. | Association | kaf | kilo (thousand) acre-feet |
| AWBA | Arizona Water Banking Authority | LCWSP | Lower Colorado Water Supply Project |
| BLM | Bureau of Land Management | LHFO | Lake Havasu Field Office (BLM) |
| BOY | beginning of year | LLC | Limited Liability Company |
| BR | Bureau of Reclamation | LTD | Limited |
| CAWCD | Central Arizona Water Conservation District | LTSC | Long Term Storage Credit |
| CCLP | Coachella Canal Lining Project | MWD | The Metropolitan Water District of Southern California |
| CDP | California diesel pump | MOD | Main Outlet Drain |
| CDW | California diesel well | MODE | Main Outlet Drain Extension |
| CDEW | California diesel electric well | MEAS | Measured |
| CEP | California electric pump | M&I | municipal and industrial |
| CEW | California electric well | NWR | National Wildlife Refuge |
| CFR | Code of Federal Regulations | NIB | Northerly International Boundary |
| CR | Colorado River | PG & E | Pacific Gas and Electric Company |
| CRBC | Colorado River Board of California | PVID | Palo Verde Irrigation District |
| CRCN | Colorado River Commission of Nevada | QSA | Quantification Settlement Agreement |
| CRIT | Colorado River Indian Tribes | Res | Reservation |
| CRWDA | Colorado River Water Delivery Agreement | SCE | Southern California Edison Company |
| CU | consumptive use | SIRA | Storage and Interstate Release Agreement |
| CVWD | Coachella Valley Water District | SDCWA | San Diego County Water Authority |
| CY | calendar year | SLRSP | San Luis Rey Settlement Parties |
| Diff. | difference | SNWA | Southern Nevada Water Authority |
| Dist. | district | USGS | United States Geological Survey |
| Div | diversion | UNMEAS | unmeasured |
| DPOC | drainage pump outlet channel | YAO | Yuma Area Office (Reclamation) |
| ET | evapotranspiration | YFO | Yuma Field Office (BLM) |
| EOY | end of year | YID | Yuma Irrigation District |
| FEIS | Final Environmental Impact Statement | YMIDD | Yuma Mesa Irrigation and Drainage District |

S U M M A R Y
 COLORADO RIVER ACCOUNTING AND WATER USE REPORT
 CALENDAR YEAR 2008

| | | 8/1/09 | (ACRE-FEET) | | | | | | | | | | | | | | |
|--|--|--------|--------------------|---------|---------------------|-----------|-----------------------|---------|--------------------|---------|---------|---------|---------|---------|-----------|--------|------|
| | | Fmts | JAN | FEB | MAR | APR | MAY | JUN | JUL | AUG | SEP | OCT | NOV | DEC | TOTAL | | |
| LOWER DIVISION STATES CONSUMPTIVE USE SUMMARY | | | | | | | | | | | | | | | | | |
| ARIZONA | | | 200,464 | 222,592 | 301,055 | 326,468 | 315,358 | 256,945 | 226,770 | 190,897 | 198,679 | 229,746 | 215,344 | 68,179 | 2,752,497 | | |
| CALIFORNIA | | | 213,982 | 286,047 | 416,618 | 504,906 | 506,188 | 475,709 | 500,197 | 444,101 | 373,128 | 344,176 | 252,512 | 181,247 | 4,498,810 | | |
| NEVADA | | | 14,685 | 10,878 | 17,780 | 24,603 | 30,516 | 31,121 | 34,025 | 34,192 | 22,937 | 26,198 | 14,929 | 7,790 | 269,654 | | |
| TOTAL CONSUMPTIVE USE, LOWER DIVISION STATES | | | 429,131 | 519,516 | 735,453 | 855,977 | 852,062 | 763,775 | 760,992 | 669,190 | 594,744 | 600,120 | 482,785 | 257,216 | 7,520,961 | | |
| TO MEXICO IN SATISFACTION OF TREATY | | 1/ | 119,428 | 154,380 | 204,112 | 198,669 | 110,741 | 115,575 | 119,428 | 93,370 | 89,307 | 73,739 | 102,966 | 118,285 | 1,500,000 | | |
| WATER BYPASSED PURSUANT TO MINUTE NO. 242 OF THE IBWC | | | 10,178 | 9,452 | 9,932 | 9,619 | 9,991 | 9,729 | 7,427 | 6,927 | 10,128 | 10,370 | 10,607 | 11,074 | 115,434 | | |
| TO MEXICO IN EXCESS OF TREATY | | | 12,366 | 168 | 592 | 3,261 | 2,575 | 10 | 2,224 | 15,215 | 9,869 | 9,950 | 14,604 | 20,545 | 91,379 | | |
| TOTAL CU, LOWER DIVISION STATES AND DELIVERIES TO MEXICO | | 2/ | 571,103 | 683,516 | 950,089 | 1,067,526 | 975,369 | 889,089 | 890,071 | 784,702 | 704,048 | 694,179 | 610,962 | 407,120 | 9,227,774 | | |
| LCWSP WELLFIELD PUMPING SUMMARY | | | | | | | | | | | | | | | | | |
| | | 3/ | NON-FEDERAL | 721 | 626 | 672 | 523 | 280 | 514 | 570 | 684 | 707 | 700 | 564 | 499 | 7,060 | |
| | | 3/ | FEDERAL | 30 | 26 | 28 | 22 | 11 | 21 | 23 | 28 | 29 | 29 | 23 | 20 | 290 | |
| | | | TOTAL | 751 | 652 | 700 | 545 | 291 | 535 | 593 | 712 | 736 | 729 | 587 | 519 | 7,350 | |
| RESERVOIR CONTENTS SUMMARY (Thousand Acre-Feet) | | | | | | | | | | | | | | | | | |
| LOWER BASIN TOTAL STORAGE | | 4/ | DEC 2007 | 14,982 | 15,235 | 15,206 | 15,109 | 14,679 | 14,453 | 14,242 | 14,134 | 14,191 | 14,182 | 14,210 | 14,223 | 14,639 | -343 |
| LOWER BASIN STORAGE PLUS LAKE POWELL | | 5/ | 26,227 | 26,115 | 26,087 | 25,909 | 25,873 | 27,265 | 29,213 | 29,325 | 28,994 | 28,691 | 28,382 | 28,187 | 28,179 | 1,952 | |
| PERCENTAGE OF ACTIVE STORAGE, LOWER BASIN PLUS POWELL | | | 49.8% | 49.6% | 49.6% | 49.2% | 49.2% | 51.8% | 55.5% | 55.7% | 55.1% | 54.5% | 53.9% | 53.6% | 53.5% | | |
| OFFSTREAM INTERSTATE STORAGE SUMMARY | | | | | | | | | | | | | | | | | |
| | | | BOY Balance | | 2008 Storage | | 2008 Recovered | | EOY Balance | | | | | | | | |
| WATER STORED IN AZ FOR THE BENEFIT OF NV & CA | | 6/ | NEVADA | 527,520 | | 0 | | 0 | 527,520 | | | | | | | | |
| | | 6/ | CALIFORNIA | 64,105 | | 0 | | 28,442 | 35,663 | | | | | | | | |
| WATER STORED IN CA BY MWD FOR THE BENEFIT OF NV | | 7/ | NEVADA | | 25,000 | | 45,000 | | 0 | 70,000 | | | | | | | |

Note: Each section of this report and each sub-section within a section, has an independant sequence of footnotes.

Footnotes:

- 1/ Deliveries to Mexico to satisfy treaty obligations.
- 2/ Sum of Total Consumptive Use in the Lower Division States, Deliveries to Mexico in Satisfaction of Treaty, Water Bypassed Pursuant to Minute No. 242 of the IBWC and water passing to Mexico in excess of treaty obligations.
- 3/ Pumpage of Lower Colorado Water Supply Project wellfield to offset certain Colorado River water use in California.
- 4/ Sum of end-of-month storage in Lower Basin Lakes Mead, Mohave, and Havasu.
- 5/ Sum of end-of-month storage in Upper Basin Lake Powell and Lower Basin Lakes Mead, Mohave, and Havasu.
- 6/ Final verified total of Long-Term Storage Credits as reported by the Arizona Water Banking Authority.
- 7/ In 2004 MWD, SNWA and the Secretary of the Interior entered into a Storage and Interstate Release Agreement to allow MWD to divert and store water for the benefit of SNWA.

RESERVOIR CONTENTS
MONTHLY STORAGE CONTENTS OF THE COLORADO RIVER SYSTEM RESERVOIRS
CALENDAR YEAR 2008

| | 08/01/09 | (THOUSAND ACRE-FEET) | | | | | | | | | | | | CY CHANGE | |
|---|----------|----------------------|--------|--------|--------|--------|--------|--------|--------|--------|--------|--------|--------|-----------|-------|
| | Ftnts | DEC 2007 | JAN | FEB | MAR | APR | MAY | JUN | JUL | AUG | SEP | OCT | NOV | | DEC |
| END OF MONTH ACTIVE CONTENTS: | | | | | | | | | | | | | | | |
| LAKE POWELL | | 11,246 | 10,880 | 10,880 | 10,800 | 11,195 | 12,812 | 14,971 | 15,192 | 14,803 | 14,509 | 14,172 | 13,966 | 13,541 | 2,295 |
| PERCENTAGE OF POWELL ACTIVE STORAGE | 3/ | 46.2% | 44.7% | 44.7% | 44.4% | 46.0% | 52.7% | 61.6% | 62.5% | 60.9% | 59.7% | 58.3% | 57.4% | 55.7% | |
| LAKE MEAD | | 12,860 | 13,017 | 13,062 | 12,940 | 12,463 | 12,132 | 11,941 | 11,890 | 11,955 | 12,013 | 12,213 | 12,157 | 12,496 | -364 |
| LAKE MOHAVE | | 1,565 | 1,663 | 1,593 | 1,618 | 1,650 | 1,725 | 1,709 | 1,666 | 1,646 | 1,585 | 1,444 | 1,494 | 1,585 | 20 |
| LAKE HAVASU | | 557 | 555 | 551 | 551 | 566 | 596 | 592 | 577 | 590 | 584 | 553 | 571 | 558 | 1 |
| STORAGE IN LOWER BASIN | 4/ | 14,982 | 15,235 | 15,206 | 15,109 | 14,679 | 14,453 | 14,242 | 14,134 | 14,191 | 14,182 | 14,210 | 14,223 | 14,639 | -343 |
| PERCENTAGE OF CR ACTIVE STORAGE IN THE LOWER BASIN | 5/ | 52.9% | 53.8% | 53.7% | 53.4% | 51.9% | 51.1% | 50.3% | 49.9% | 50.1% | 50.1% | 50.2% | 50.2% | 51.7% | |
| LOWER BASIN STORAGE PLUS LAKE POWELL | 6/ | 26,227 | 26,115 | 26,087 | 25,909 | 25,873 | 27,265 | 29,213 | 29,325 | 28,994 | 28,691 | 28,382 | 28,187 | 28,179 | 1,952 |
| PERCENTAGE OF ACTIVE STORAGE, LOWER BASIN PLUS POWELL | 7/ | 49.8% | 49.6% | 49.6% | 49.2% | 49.2% | 51.8% | 55.5% | 55.7% | 55.1% | 54.5% | 53.9% | 53.6% | 53.5% | |
| TOTAL SYSTEM STORAGE | 8/ | 31,589 | 31,369 | 31,176 | 30,933 | 30,926 | 32,503 | 34,720 | 34,979 | 34,524 | 34,065 | 33,660 | 33,423 | 33,325 | 1,736 |
| PERCENTAGE OF TOTAL SYSTEM STORAGE | 9/ | 53.2% | 52.8% | 52.5% | 52.1% | 52.1% | 54.7% | 58.5% | 58.9% | 58.1% | 57.4% | 56.7% | 56.3% | 56.1% | |

Note: For purposes of this tabulation, the term "active storage" is equivalent to live storage less the Exclusive Flood Control Space, and refers to the volume of water that can be delivered downstream via gravity flow.

Footnotes:

- 1/ Values may differ from figures shown due to rounding and being displayed to the nearest thousand acre-feet.
- 2/ CY change is the difference in end-of-month storage between December of the previous year and December of the reporting year.
A positive value represents an increase in water in storage, and a negative value indicates a decrease in water in storage.
- 3/ Percentage of total active storage capacity available in Lake Powell. Based on total active storage of 24,322,000 af.
- 4/ The sum of end-of-month storage in Lakes Mead, Mohave, and Havasu.
- 5/ The percentage of available active storage capacity held in the Lower Basin (Lakes Mead, Mohave and Havasu). Based on active storage of 28,306,000 af.
- 6/ The sum of end-of-month storage in Lake Powell (Upper Basin) and Lakes Mead, Mohave and Havasu (Lower Basin).
- 7/ The percentage of available total active storage capacity held in Lake Powell (Upper Basin) and Lakes Mead, Mohave, and Havasu (Lower Basin). Based on total active storage of 52,628,000 af.
- 8/ Total end-of-month system storage, includes Reclamation reservoirs in the Upper and Lower Basins of the Colorado River.
- 9/ The percentage of total end-of-month system storage. This includes the Upper Basin Lakes Powell, Navajo, Crystal, Morrow Point, Blue Mesa, Flaming Gorge, Fontenelle, and Lower Basin Lakes Mead, Mohave, and Havasu. Based on total active system storage of 59,383,000 af.

**COMPILATION OF RECORDS IN ACCORDANCE WITH ARTICLE V
OF THE CONSOLIDATED DECREE OF THE UNITED STATES
SUPREME COURT IN *ARIZONA V. CALIFORNIA*, 547 U.S. 150 (2006)**

V. The United States shall prepare and maintain, or provide for the preparation and maintenance of, and shall make available, annually and at such shorter intervals as the Secretary of the Interior shall deem necessary or advisable, for inspection by interested persons at all reasonable times and at a reasonable place or places, complete, detailed and accurate records of:

(A) Releases of water through regulatory structures controlled by the United States;

(B) Diversions of water from the mainstream, return flow of such water to the stream as is available for consumptive use in the United States or in satisfaction of the Mexican Treaty obligation, and consumptive use of such water. These quantities shall be stated separately as to each diverter from the mainstream, each point of diversion, and each of the States of Arizona, California and Nevada;

(C) Releases of mainstream water pursuant to orders therefor but not diverted by the party ordering the same, and the quantity of such water delivered to Mexico in satisfaction of the Mexican Treaty or diverted by others in satisfaction of rights decreed herein. These quantities shall be stated separately as to each diverter from the mainstream, each point of diversion, and each of the States of Arizona, California and Nevada;

(D) Deliveries to Mexico of water in satisfaction of the obligations of Part III of the Treaty of February 3, 1944, and, separately stated, water passing to Mexico in excess of treaty requirements;

(E) Diversions of water from the mainstream of the Gila and San Francisco Rivers and the consumptive use of such water, for the benefit of the Gila National Forest.

**RECORDS OF RELEASES OF WATER THROUGH
REGULATORY STRUCTURES IN ACCORDANCE WITH
ARTICLE V (A) OF THE CONSOLIDATED DECREE OF THE UNITED STATES
SUPREME COURT IN *ARIZONA V. CALIFORNIA*, 547 U.S. 150 (2006)**

The following tabulation for calendar year 2008 shows the final records for release of water through regulatory structures controlled by the United States. Releases from Glen Canyon and Hoover Dams are measured and reported by Reclamation. The Davis, Parker, Palo Verde, Imperial, and Laguna Dams records of release are furnished by the USGS and are based upon measurements at or below the structures.

The record of river flow through Headgate Rock Dam was computed using the record of flow at the gaging station "Colorado River below Parker Dam, Arizona-California," and deducting from it the record of flow at the gaging station "Diversion for Colorado River Indian Reservation Main Canal near Parker, Arizona" measured at Headgate Rock Dam.

CALENDAR YEAR 2008

| STRUCTURE | 08/01/09 | (ACRE-FEET) | | | | | | | | | | | | TOTAL |
|---|----------|-------------|---------|-----------|-----------|-----------|---------|---------|---------|---------|---------|---------|---------|-----------|
| | Ftnts | JAN | FEB | MAR | APR | MAY | JUN | JUL | AUG | SEP | OCT | NOV | DEC | |
| GLEN CANYON DAM | | 800,644 | 602,286 | 830,227 | 678,427 | 790,191 | 791,309 | 865,320 | 889,590 | 723,342 | 748,639 | 602,952 | 800,571 | 9,123,498 |
| HOOVER DAM | | 672,106 | 658,790 | 1,024,602 | 1,159,011 | 1,112,844 | 948,887 | 876,099 | 804,350 | 651,947 | 508,355 | 674,912 | 453,437 | 9,545,340 |
| DAVIS DAM | | 559,300 | 739,600 | 1,016,000 | 1,164,000 | 1,054,000 | 988,600 | 957,800 | 859,500 | 730,500 | 686,500 | 669,700 | 396,300 | 9,821,800 |
| PARKER DAM | | 298,200 | 473,500 | 748,900 | 850,500 | 697,200 | 711,500 | 751,800 | 659,200 | 539,800 | 463,900 | 387,000 | 266,200 | 6,847,700 |
| HEADGATE ROCK DAM | 1/ | 280,020 | 435,490 | 687,710 | 782,090 | 633,600 | 639,660 | 671,430 | 583,790 | 479,760 | 420,130 | 356,800 | 245,650 | 6,216,130 |
| PALO VERDE DIVERSION DAM | | 266,500 | 361,400 | 583,300 | 693,600 | 518,900 | 500,200 | 561,800 | 473,200 | 378,900 | 364,300 | 326,500 | 199,900 | 5,228,500 |
| IMPERIAL DAM | 2/ | 45,390 | 23,360 | 28,250 | 25,900 | 32,390 | 23,060 | 37,070 | 68,440 | 40,360 | 30,140 | 38,470 | 43,820 | 436,650 |
| DIVERSION TO MITTRY LAKE FROM GILA MAIN CANAL | | 463 | 474 | 736 | 815 | 841 | 768 | 906 | 732 | 649 | 726 | 531 | 276 | 7,917 |
| SUM IMPERIAL DAM + DIVERSION TO MITTRY LAKE | | 45,853 | 23,834 | 28,986 | 26,715 | 33,231 | 23,828 | 37,976 | 69,172 | 41,009 | 30,866 | 39,001 | 44,096 | 444,567 |
| LAGUNA DAM | | 43,270 | 25,760 | 28,560 | 25,620 | 31,720 | 24,000 | 33,020 | 60,790 | 42,900 | 33,390 | 35,090 | 44,280 | 428,400 |

Note: All data is supplied by the USGS with the exception of the releases from Glen Canyon Dam and Hoover Dam, which are provided by Reclamation.

Footnotes:

1/ Computed as Parker Dam release less diversion at Headgate Rock Dam.

2/ Represents flow below Imperial Dam alone, does not include diversions through the All-American Canal and the Gila Gravity Main Canal.

RECORDS OF DIVERSIONS, RETURN FLOWS AND CONSUMPTIVE USE IN ACCORDANCE WITH ARTICLE V (B) OF THE CONSOLIDATED DECREE OF THE UNITED STATES SUPREME COURT IN ARIZONA V. CALIFORNIA, 547 U.S. 150 (2006)

The following tabulations for calendar year 2008 show final records of diversions of water from the mainstream of the Colorado River, return flow of such water to the mainstream, and the consumptive use of such water in each state. The records were furnished by the U.S. Geological Survey (USGS), International Boundary and Water Commission, Bureau of Indian Affairs, Reclamation, National Park Service, U.S. Fish and Wildlife Service, and water user agencies. Diversions from the Topock Marsh Inlet Canal, All-American Canal and Gila Gravity Main Canal at Imperial Dam, were assigned to each user by adding each user's proportional share of the total canal losses to the delivery taken by each user at its turnout from the canal.

The tabulations show quantities of water drawn by surface diversion from the mainstream of the Colorado River, pumped directly from the mainstream, or pumped from wells in the Colorado River aquifer. Diversions are listed in two separate tabulations for each state. The first tabulation lists water users whose diversions are typically measured and reported monthly or more frequently. Measured return flows to the mainstream, an estimate of unmeasured return flows to the mainstream, and consumptive use are listed for points of diversion and return when that information is available.

The second tabulation for Arizona and California, entitled "Supplemental Use Tabulation," shows quantities of water pumped from the mainstream or from wells in the Colorado River aquifer, where the amount of water diverted is reported by the USGS or the water user. For USGS reported wells and pumps, the diversions are assumed to be equal to six acre-feet per irrigated acre of land per year.

Unmeasured returns are computed by multiplying a user's diversion by an unmeasured return flow factor. Reclamation is continuing to refine estimates of unmeasured returns.

No person or entity is entitled to divert or use Colorado River water without an entitlement. An entitlement is an authorization to beneficially use Colorado River water pursuant to: (1) a right decreed by the Supreme Court, (2) a contract with the United States through the Secretary of the Interior (Secretary), or (3) a Secretarial reservation of water. The diversions, return flows or consumptive uses tabulated in this report constitute the records required by Article V of the Consolidated Decree of the United States Supreme Court in *Arizona v. California*, 547 U.S. 150 (2006). The listing of a use in this report should not be interpreted as an entitlement or an indication that the use is authorized. If you notice an error or omission, please report it to the contact person listed on the cover page.

Reclamation does not consider pumping of wells from the flood plain or the underlying aquifer downstream from the Northerly International Boundary (NIB) to be a diversion of Colorado River water. This policy is based on the following: the ground water can reasonably be assumed to be flowing towards Mexico and therefore, not to be flowing toward the Colorado River upstream of Mexico's point of diversion near NIB. As such, this water does not return to the river to be made "available for consumptive use in the United States or in satisfaction of the Mexican Treaty obligation." In accordance with this position, Reclamation has discontinued reporting these wells.

DIVERSIONS FROM MAINSTREAM-AVAILABLE RETURN FLOW
AND CONSUMPTIVE USE OF SUCH WATER
CALENDAR YEAR 2008
STATE OF ARIZONA

| WATER USER | 8/1/09 Ftnts | 8/1/09 (ACRE-FEET) | | | | | | | | | | | | TOTAL 1/ |
|--|-----------------|-----------------------|-------|-------|-------|-------|--------|--------|-------|-------|-------|-------|-------|----------|
| | | JAN | FEB | MAR | APR | MAY | JUN | JUL | AUG | SEP | OCT | NOV | DEC | |
| LAKE MEAD NATIONAL RECREATION, AZ. DIVERSIONS FROM LAKE MEAD (TEMPLE BAR) | DIVERSION | 3 | 2 | 4 | 8 | 9 | 12 | 25 | 18 | 13 | 9 | 5 | 5 | 113 |
| | MEAS. RETURNS | 0 | 0 | 0 | 0 | 0 | 0 | 0 | 0 | 0 | 0 | 0 | 0 | 0 |
| | UNMEAS. RETURNS | 0 | 0 | 0 | 0 | 0 | 0 | 0 | 0 | 0 | 0 | 0 | 0 | 0 |
| | CONSUMPTIVE USE | 3 | 2 | 4 | 8 | 9 | 12 | 25 | 18 | 13 | 9 | 5 | 5 | 113 |
| LAKE MEAD NATIONAL RECREATION, AZ. DIVERSIONS FROM LAKE MOHAVE (KATHERINE, WILLOW BEACH) | DIVERSION | 14 | 13 | 13 | 16 | 16 | 19 | 18 | 18 | 15 | 15 | 14 | 11 | 182 |
| | MEAS. RETURNS | 0 | 0 | 0 | 0 | 0 | 0 | 0 | 0 | 0 | 0 | 0 | 0 | 0 |
| | UNMEAS. RETURNS | 0 | 0 | 0 | 0 | 0 | 0 | 0 | 0 | 0 | 0 | 0 | 0 | 0 |
| | CONSUMPTIVE USE | 14 | 13 | 13 | 16 | 16 | 19 | 18 | 18 | 15 | 15 | 14 | 11 | 182 |
| LOWER COLORADO RIVER DAMS PROJECT DIVERSION AT DAVIS DAM | DIVERSION | 3 | 1 | 5 | 20 | 6 | 2 | 2 | 2 | 2 | 2 | 2 | 1 | 48 |
| | MEAS. RETURNS | 3 | 1 | 4 | 19 | 6 | 2 | 2 | 2 | 2 | 2 | 2 | 1 | 46 |
| | UNMEAS. RETURNS | 0 | 0 | 0 | 0 | 0 | 0 | 0 | 0 | 0 | 0 | 0 | 0 | 0 |
| | CONSUMPTIVE USE | 0 | 0 | 1 | 1 | 0 | 0 | 0 | 0 | 0 | 0 | 0 | 0 | 2 |
| BULLHEAD CITY PUMPED FROM WELLS | DIVERSION | 688 | 658 | 740 | 845 | 954 | 970 | 1,131 | 991 | 925 | 999 | 757 | 632 | 10,290 |
| MOHAVE CO. PARKS DIVERSION AT DAVIS DAM | DIVERSION | 5 | 6 | 8 | 7 | 10 | 11 | 13 | 11 | 10 | 8 | 9 | 5 | 103 |
| | MEAS. RETURNS | 0 | 0 | 0 | 0 | 0 | 0 | 0 | 0 | 0 | 0 | 0 | 0 | 0 |
| | UNMEAS. RETURNS | 229 | 219 | 247 | 281 | 318 | 324 | 378 | 331 | 309 | 332 | 253 | 210 | 3,431 |
| | CONSUMPTIVE USE | 464 | 445 | 501 | 571 | 646 | 657 | 766 | 671 | 626 | 675 | 513 | 427 | 6,962 |
| MOHAVE WATER CONSERVATION DISTRICT PUMPED FROM WELLS | DIVERSION | 64 | 59 | 62 | 76 | 77 | 78 | 113 | 92 | 92 | 89 | 67 | 72 | 941 |
| | MEAS. RETURNS | 0 | 0 | 0 | 0 | 0 | 0 | 0 | 0 | 0 | 0 | 0 | 0 | 0 |
| | UNMEAS. RETURNS | 21 | 19 | 20 | 25 | 25 | 26 | 37 | 30 | 30 | 29 | 22 | 24 | 308 |
| | CONSUMPTIVE USE | 43 | 40 | 42 | 51 | 52 | 52 | 76 | 62 | 62 | 60 | 45 | 48 | 633 |
| BROOKE WATER LLC PUMPED FROM RIVER | DIVERSION | 29 | 26 | 31 | 32 | 38 | 42 | 48 | 41 | 35 | 34 | 30 | 24 | 410 |
| | MEAS. RETURNS | 0 | 0 | 0 | 0 | 0 | 0 | 0 | 0 | 0 | 0 | 0 | 0 | 0 |
| | UNMEAS. RETURNS | 10 | 9 | 10 | 10 | 12 | 14 | 16 | 13 | 12 | 11 | 10 | 8 | 135 |
| | CONSUMPTIVE USE | 19 | 17 | 21 | 22 | 26 | 28 | 32 | 28 | 23 | 23 | 20 | 16 | 275 |
| MOHAVE VALLEY I.D.D. PUMPED FROM WELLS | DIVERSION | 966 | 2,381 | 4,020 | 4,399 | 4,136 | 5,014 | 3,531 | 3,160 | 4,217 | 2,081 | 1,868 | 1,315 | 37,088 |
| | MEAS. RETURNS | 0 | 0 | 0 | 0 | 0 | 0 | 0 | 0 | 0 | 0 | 0 | 0 | 0 |
| | UNMEAS. RETURNS | 444 | 1,095 | 1,849 | 2,024 | 1,903 | 2,306 | 1,624 | 1,454 | 1,940 | 957 | 859 | 605 | 17,060 |
| | CONSUMPTIVE USE | 522 | 1,286 | 2,171 | 2,375 | 2,233 | 2,708 | 1,907 | 1,706 | 2,277 | 1,124 | 1,009 | 710 | 20,028 |
| FORT MOJAVE INDIAN RESERVATION PUMPED FROM RIVER | DIVERSION | 2/ 1,268 | 4,799 | 5,024 | 4,999 | 7,528 | 11,299 | 11,350 | 8,479 | 4,932 | 4,064 | 2,731 | 791 | 67,264 |
| PUMPED FROM TOPOCK MARSH INLET CANAL DELIVERED BY CITY OF NEEDLES | DIVERSION | 0 | 47 | 198 | 529 | 520 | 320 | 168 | 195 | 169 | 0 | 0 | 0 | 2,146 |
| | DIVERSION | 0 | 0 | 7 | 16 | 6 | 5 | 10 | 1 | 0 | 5 | 0 | 0 | 50 |
| | MEAS. RETURNS | 0 | 0 | 0 | 0 | 0 | 0 | 0 | 0 | 0 | 0 | 0 | 0 | 0 |
| | UNMEAS. RETURNS | 583 | 2,208 | 2,311 | 2,300 | 3,463 | 5,198 | 5,221 | 3,900 | 2,269 | 1,869 | 1,256 | 364 | 30,942 |
| | CONSUMPTIVE USE | 685 | 2,638 | 2,918 | 3,244 | 4,591 | 6,426 | 6,307 | 4,775 | 2,832 | 2,200 | 1,475 | 427 | 38,518 |
| GOLDEN SHORES WATER CONSERVATION DISTRICT PUMPED FROM WELLS | DIVERSION | 3/ 19 | 23 | 32 | 34 | 42 | 51 | 55 | 53 | 42 | 35 | 25 | 24 | 435 |
| | MEAS. RETURNS | 0 | 0 | 0 | 0 | 0 | 0 | 0 | 0 | 0 | 0 | 0 | 0 | 0 |
| | UNMEAS. RETURNS | 6 | 8 | 11 | 11 | 14 | 17 | 18 | 17 | 14 | 12 | 8 | 8 | 144 |
| | CONSUMPTIVE USE | 13 | 15 | 21 | 23 | 28 | 34 | 37 | 36 | 28 | 23 | 17 | 16 | 291 |
| HAVASU NATIONAL WILDLIFE REFUGE TOPOCK MARSH INLET FARM DITCH | DIVERSION | 4/ 0 | 718 | 5,059 | 7,119 | 5,330 | 5,006 | 3,885 | 3,017 | 1,726 | 679 | 569 | 0 | 33,108 |
| | DIVERSION | 0 | 175 | 1,198 | 1,313 | 859 | 780 | 642 | 443 | 186 | 0 | 0 | 0 | 5,596 |
| WELL | DIVERSION | 3/ 10 | 11 | 15 | 17 | 20 | 25 | 27 | 26 | 20 | 17 | 12 | 12 | 212 |
| | MEAS. RETURNS | 0 | 0 | 0 | 0 | 0 | 0 | 0 | 0 | 0 | 0 | 0 | 0 | 0 |
| | UNMEAS. RETURNS | 9 | 796 | 5,519 | 7,435 | 5,464 | 5,114 | 4,008 | 3,068 | 1,700 | 612 | 511 | 11 | 34,247 |
| | CONSUMPTIVE USE | 1 | 108 | 753 | 1,014 | 745 | 697 | 546 | 418 | 232 | 84 | 70 | 1 | 4,669 |

DIVERSIONS FROM MAINSTREAM-AVAILABLE RETURN FLOW
AND CONSUMPTIVE USE OF SUCH WATER
CALENDAR YEAR 2008
STATE OF ARIZONA

| WATER USER | Ftnts | 8/1/09 | | | | | | | | | | | | TOTAL 1/ |
|--|-----------------|-------------|---------|---------|---------|---------|---------|--------|--------|--------|---------|---------|--------|-----------|
| | | (ACRE-FEET) | | | | | | | | | | | | |
| | | JAN | FEB | MAR | APR | MAY | JUN | JUL | AUG | SEP | OCT | NOV | DEC | |
| LAKE HAVASU CITY PUMPED FROM WELLS | | 1,105 | 1,030 | 1,211 | 1,348 | 1,500 | 1,643 | 1,926 | 1,815 | 1,605 | 1,563 | 1,175 | 1,052 | 16,973 |
| | DIVERSION | 0 | 0 | 0 | 0 | 0 | 0 | 0 | 0 | 0 | 0 | 0 | 0 | 0 |
| | MEAS. RETURNS | 420 | 391 | 460 | 512 | 570 | 624 | 732 | 690 | 610 | 594 | 447 | 400 | 6,450 |
| | UNMEAS. RETURNS | 685 | 639 | 751 | 836 | 930 | 1,019 | 1,194 | 1,125 | 995 | 969 | 728 | 652 | 10,523 |
| | CONSUMPTIVE USE | | | | | | | | | | | | | |
| CENTRAL ARIZONA PROJECT PUMPED FROM LAKE HAVASU | | 166,725 | 157,301 | 167,973 | 165,730 | 172,183 | 126,311 | 78,041 | 65,373 | 93,513 | 135,834 | 167,966 | 64,769 | 1,561,719 |
| | DIVERSION | 0 | 0 | 0 | 0 | 0 | 0 | 0 | 0 | 0 | 0 | 0 | 0 | 0 |
| | MEAS. RETURNS | 0 | 0 | 0 | 0 | 0 | 0 | 0 | 0 | 0 | 0 | 0 | 0 | 0 |
| | UNMEAS. RETURNS | 166,725 | 157,301 | 167,973 | 165,730 | 172,183 | 126,311 | 78,041 | 65,373 | 93,513 | 135,834 | 167,966 | 64,769 | 1,561,719 |
| | CONSUMPTIVE USE | | | | | | | | | | | | | |
| TOWN OF PARKER PUMPED FROM RIVER WELL IN FLOOD PLAIN | 5/ | 0 | 0 | 0 | 0 | 0 | 0 | 0 | 0 | 0 | 0 | 0 | 0 | 0 |
| | DIVERSION | 44 | 42 | 58 | 70 | 76 | 83 | 87 | 85 | 79 | 76 | 63 | 46 | 809 |
| | MEAS. RETURNS | 25 | 24 | 25 | 23 | 25 | 24 | 25 | 26 | 24 | 24 | 22 | 23 | 290 |
| | UNMEAS. RETURNS | 13 | 12 | 17 | 20 | 22 | 24 | 25 | 24 | 23 | 22 | 18 | 13 | 233 |
| | CONSUMPTIVE USE | 6 | 6 | 16 | 27 | 29 | 35 | 37 | 35 | 32 | 30 | 23 | 10 | 286 |
| COLORADO RIVER INDIAN RESERVATION DIVERSION AT HEADGATE ROCK DAM 2 PUMPS AND MUNICIPAL | 6/ | 18,180 | 38,010 | 61,190 | 68,410 | 63,600 | 71,840 | 80,370 | 75,410 | 60,040 | 43,770 | 30,200 | 20,550 | 631,570 |
| | DIVERSION | 520 | 620 | 845 | 930 | 1,117 | 1,335 | 1,448 | 1,396 | 1,124 | 962 | 702 | 658 | 11,657 |
| | MEAS. RETURNS | 13,324 | 13,496 | 16,357 | 18,574 | 19,727 | 18,268 | 18,717 | 20,336 | 20,021 | 19,830 | 17,527 | 14,748 | 210,925 |
| | UNMEAS. RETURNS | 1,029 | 2,125 | 3,412 | 3,814 | 3,559 | 4,025 | 4,500 | 4,224 | 3,364 | 2,460 | 1,700 | 1,166 | 35,378 |
| | CONSUMPTIVE USE | 4,347 | 23,009 | 42,266 | 46,952 | 41,431 | 50,882 | 58,601 | 52,246 | 37,779 | 22,442 | 11,675 | 5,294 | 396,924 |
| EHRENBURG IMPROVEMENT ASSOCIATION ONE RIVER PUMP | | 27 | 24 | 31 | 34 | 38 | 43 | 44 | 45 | 42 | 37 | 35 | 28 | 428 |
| | DIVERSION | 0 | 0 | 0 | 0 | 0 | 0 | 0 | 0 | 0 | 0 | 0 | 0 | 0 |
| | MEAS. RETURNS | 8 | 7 | 9 | 10 | 11 | 12 | 13 | 13 | 12 | 11 | 10 | 8 | 124 |
| | UNMEAS. RETURNS | 19 | 17 | 22 | 24 | 27 | 31 | 31 | 32 | 30 | 26 | 25 | 20 | 304 |
| | CONSUMPTIVE USE | | | | | | | | | | | | | |
| CIBOLA VALLEY CIBOLA VALLEY I.D.D. | | 514 | 616 | 1,286 | 1,173 | 1,342 | 1,080 | 1,272 | 1,074 | 840 | 827 | 386 | 456 | 10,866 |
| | DIVERSION | 183 | 228 | 311 | 336 | 411 | 499 | 544 | 524 | 412 | 345 | 245 | 240 | 4,278 |
| | MEAS. RETURNS | 202 | 378 | 379 | 210 | 673 | 527 | 824 | 675 | 604 | 239 | 177 | 139 | 5,027 |
| | UNMEAS. RETURNS | 58 | 87 | 63 | 170 | 382 | 376 | 372 | 302 | 368 | 252 | 114 | 155 | 2,699 |
| | CONSUMPTIVE USE | 155 | 191 | 261 | 282 | 345 | 418 | 456 | 439 | 345 | 289 | 205 | 202 | 3,588 |
| | DIVERSION | 0 | 0 | 0 | 0 | 0 | 0 | 0 | 0 | 0 | 0 | 0 | 0 | 0 |
| | MEAS. RETURNS | 317 | 428 | 655 | 619 | 898 | 826 | 989 | 859 | 732 | 556 | 321 | 340 | 7,540 |
| | UNMEAS. RETURNS | 795 | 1,073 | 1,645 | 1,552 | 2,254 | 2,074 | 2,480 | 2,155 | 1,837 | 1,396 | 806 | 852 | 18,918 |
| | CONSUMPTIVE USE | | | | | | | | | | | | | |
| CIBOLA NATIONAL WILDLIFE REFUGE 3 PUMPS | | 631 | 1,215 | 1,199 | 1,425 | 1,833 | 1,635 | 1,634 | 1,522 | 1,959 | 2,020 | 957 | 784 | 16,814 |
| | DIVERSION | 0 | 0 | 0 | 0 | 0 | 0 | 0 | 0 | 0 | 0 | 0 | 0 | 0 |
| | MEAS. RETURNS | 240 | 462 | 456 | 542 | 697 | 621 | 621 | 578 | 744 | 768 | 364 | 298 | 6,391 |
| | UNMEAS. RETURNS | 391 | 753 | 743 | 883 | 1,136 | 1,014 | 1,013 | 944 | 1,215 | 1,252 | 593 | 486 | 10,423 |
| | CONSUMPTIVE USE | | | | | | | | | | | | | |
| IMPERIAL NATIONAL WILDLIFE REFUGE 4 PUMPS | | 90 | 251 | 201 | 153 | 102 | 344 | 224 | 261 | 74 | 161 | 54 | 8 | 1,923 |
| | DIVERSION | 0 | 0 | 0 | 0 | 0 | 0 | 0 | 0 | 0 | 0 | 0 | 0 | 0 |
| | MEAS. RETURNS | 34 | 95 | 76 | 58 | 39 | 131 | 85 | 99 | 28 | 61 | 21 | 3 | 730 |
| | UNMEAS. RETURNS | 56 | 156 | 125 | 95 | 63 | 213 | 139 | 162 | 46 | 100 | 33 | 5 | 1,193 |
| | CONSUMPTIVE USE | | | | | | | | | | | | | |
| YUMA PROVING GROUND DIVERSION AT IMPERIAL DAM WELLS W, X, Y, Z | | 0 | 0 | 0 | 0 | 0 | 0 | 1 | 1 | 0 | 1 | 0 | 2 | 5 |
| | DIVERSION | 37 | 37 | 26 | 35 | 78 | 84 | 87 | 84 | 84 | 26 | 28 | 44 | 650 |
| | MEAS. RETURNS | 0 | 0 | 0 | 0 | 0 | 0 | 0 | 0 | 0 | 0 | 0 | 0 | 0 |
| | UNMEAS. RETURNS | 0 | 0 | 0 | 0 | 0 | 0 | 0 | 0 | 0 | 0 | 0 | 0 | 0 |
| | CONSUMPTIVE USE | 37 | 37 | 26 | 35 | 78 | 84 | 88 | 85 | 84 | 27 | 28 | 46 | 655 |
| GILA MONSTER FARMS DIVERSION AT IMPERIAL DAM *Use from ASLD lease has been deducted. | | 516 | 449 | 977 | 1,009 | 851 | 376 | 429 | 466 | 562 | 921 | 606 | 90 | 7,252 |
| | DIVERSION | 20 | 34 | 53 | 25 | 20 | 16 | 20 | 40 | 29 | 24 | 35 | 24 | 340 |
| | MEAS. RETURNS | 196 | 171 | 371 | 383 | 323 | 143 | 163 | 177 | 214 | 350 | 230 | 34 | 2,755 |
| | UNMEAS. RETURNS | 300 | 244 | 553 | 601 | 508 | 217 | 246 | 249 | 319 | 547 | 341 | 32 | 4,157 |
| | CONSUMPTIVE USE | | | | | | | | | | | | | |

DIVERSIONS FROM MAINSTREAM-AVAILABLE RETURN FLOW
AND CONSUMPTIVE USE OF SUCH WATER
CALENDAR YEAR 2008
STATE OF ARIZONA

| 8/1/09 | | (ACRE-FEET) | | | | | | | | | | | | |
|---|---------------------|-------------|--------|--------|--------|--------|--------|--------|--------|--------|--------|--------|--------|----------|
| WATER USER | Ftnts | JAN | FEB | MAR | APR | MAY | JUN | JUL | AUG | SEP | OCT | NOV | DEC | TOTAL 1/ |
| WELLTON MOHAWK I.D.D. | | | | | | | | | | | | | | |
| DIVERSION AT IMPERIAL DAM | | | | | | | | | | | | | | |
| | DIVERSION | 21,908 | 22,706 | 43,708 | 47,435 | 45,249 | 39,717 | 41,740 | 40,540 | 36,057 | 33,597 | 20,839 | 8,480 | 401,976 |
| | GGMC RETURN | 702 | 1,444 | 1,979 | 1,001 | 873 | 1,439 | 1,617 | 2,897 | 1,562 | 750 | 1,003 | 1,852 | 17,119 |
| | DOME RETURN | 728 | 554 | 648 | 543 | 394 | 214 | 102 | 329 | 403 | 408 | 491 | 1,036 | 5,850 |
| 7/ | MOD RETURN | 10,790 | 9,600 | 9,290 | 9,450 | 9,680 | 9,560 | 9,640 | 10,310 | 9,960 | 9,990 | 10,670 | 11,250 | 120,190 |
| | TOTAL MEAS. RETURNS | 12,220 | 11,598 | 11,917 | 10,994 | 10,947 | 11,213 | 11,359 | 13,536 | 11,925 | 11,148 | 12,164 | 14,138 | 143,159 |
| | UNMEAS. RETURNS | 0 | 0 | 0 | 0 | 0 | 0 | 0 | 0 | 0 | 0 | 0 | 0 | 0 |
| | CONSUMPTIVE USE | 9,688 | 11,108 | 31,791 | 36,441 | 34,302 | 28,504 | 30,381 | 27,004 | 24,132 | 22,449 | 8,675 | -5,658 | 258,817 |
| CITY OF YUMA | | | | | | | | | | | | | | |
| DIVERSION AT IMPERIAL DAM (AAC) | | | | | | | | | | | | | | |
| | DIVERSION | 1,663 | 1,586 | 1,779 | 1,700 | 2,035 | 2,606 | 2,666 | 2,551 | 2,226 | 2,187 | 1,982 | 1,880 | 24,861 |
| DIVERSION AT IMPERIAL DAM (GGMC) | | | | | | | | | | | | | | |
| | DIVERSION | 0 | 0 | 0 | 0 | 0 | 0 | 0 | 0 | 0 | 0 | 0 | 0 | 0 |
| DIVERSIONS FOR YUMA EAST WETLANDS | | | | | | | | | | | | | | |
| | DIVERSION | 196 | 236 | 192 | 220 | 216 | 244 | 252 | 242 | 244 | 252 | 97 | 0 | 2,391 |
| | MEAS. RETURNS | 821 | 758 | 799 | 743 | 708 | 708 | 730 | 824 | 791 | 828 | 827 | 730 | 9,267 |
| | UNMEAS. RETURNS | 171 | 206 | 168 | 193 | 189 | 213 | 220 | 212 | 213 | 220 | 85 | 0 | 2,090 |
| | CONSUMPTIVE USE | 867 | 858 | 1,004 | 984 | 1,354 | 1,929 | 1,968 | 1,757 | 1,466 | 1,391 | 1,167 | 1,150 | 15,895 |
| MARINE CORPS AIR STATION YUMA | | | | | | | | | | | | | | |
| DIVERSION AT IMPERIAL DAM | | | | | | | | | | | | | | |
| | DIVERSION | 79 | 85 | 101 | 116 | 138 | 194 | 167 | 191 | 161 | 122 | 104 | 71 | 1,529 |
| | MEAS. RETURNS | 0 | 0 | 0 | 0 | 0 | 0 | 0 | 0 | 0 | 0 | 0 | 0 | 0 |
| | UNMEAS. RETURNS | 0 | 0 | 0 | 0 | 0 | 0 | 0 | 0 | 0 | 0 | 0 | 0 | 0 |
| | CONSUMPTIVE USE | 79 | 85 | 101 | 116 | 138 | 194 | 167 | 191 | 161 | 122 | 104 | 71 | 1,529 |
| UNION PACIFIC RAILROAD COMPANY | | | | | | | | | | | | | | |
| DIVERSION AT IMPERIAL DAM | | | | | | | | | | | | | | |
| | DIVERSION | 4 | 4 | 4 | 4 | 4 | 4 | 4 | 4 | 4 | 4 | 4 | 4 | 48 |
| | MEAS. RETURNS | 0 | 0 | 0 | 0 | 0 | 0 | 0 | 0 | 0 | 0 | 0 | 0 | 0 |
| | UNMEAS. RETURNS | 2 | 2 | 2 | 2 | 2 | 2 | 2 | 2 | 2 | 2 | 2 | 2 | 24 |
| | CONSUMPTIVE USE | 2 | 2 | 2 | 2 | 2 | 2 | 2 | 2 | 2 | 2 | 2 | 2 | 24 |
| YUMA MESA FRUIT GROWERS ASSOCIATION | | | | | | | | | | | | | | |
| DIVERSION AT IMPERIAL DAM | | | | | | | | | | | | | | |
| | DIVERSION | 0 | 0 | 0 | 0 | 0 | 0 | 0 | 0 | 0 | 0 | 0 | 0 | 0 |
| | MEAS. RETURNS | 0 | 0 | 0 | 0 | 0 | 0 | 0 | 0 | 0 | 0 | 0 | 0 | 0 |
| | UNMEAS. RETURNS | 0 | 0 | 0 | 0 | 0 | 0 | 0 | 0 | 0 | 0 | 0 | 0 | 0 |
| | CONSUMPTIVE USE | 0 | 0 | 0 | 0 | 0 | 0 | 0 | 0 | 0 | 0 | 0 | 0 | 0 |
| UNIVERSITY OF ARIZONA | | | | | | | | | | | | | | |
| DIVERSION AT IMPERIAL DAM (WARREN ACT) | | | | | | | | | | | | | | |
| | DIVERSION | 53 | 8 | 49 | 26 | 57 | 61 | 55 | 66 | 102 | 67 | 62 | 5 | 611 |
| | MEAS. RETURNS | 0 | 0 | 0 | 0 | 0 | 0 | 0 | 0 | 0 | 0 | 0 | 0 | 0 |
| | UNMEAS. RETURNS | 0 | 0 | 0 | 0 | 0 | 0 | 0 | 0 | 0 | 0 | 0 | 0 | 0 |
| | CONSUMPTIVE USE | 53 | 8 | 49 | 26 | 57 | 61 | 55 | 66 | 102 | 67 | 62 | 5 | 611 |
| YUMA UNION HIGH SCHOOL | | | | | | | | | | | | | | |
| DIVERSION AT IMPERIAL DAM | | | | | | | | | | | | | | |
| | DIVERSION | 27 | 15 | 27 | 35 | 50 | 39 | 65 | 43 | 46 | 31 | 29 | 23 | 430 |
| | MEAS. RETURNS | 0 | 0 | 0 | 0 | 0 | 0 | 0 | 0 | 0 | 0 | 0 | 0 | 0 |
| | UNMEAS. RETURNS | 7 | 4 | 7 | 9 | 13 | 10 | 16 | 11 | 12 | 8 | 7 | 6 | 110 |
| | CONSUMPTIVE USE | 20 | 11 | 20 | 26 | 37 | 29 | 49 | 32 | 34 | 23 | 22 | 17 | 320 |
| CAMILLE ALEC JR. | | | | | | | | | | | | | | |
| DIVERSION AT IMPERIAL DAM (WARREN ACT) | | | | | | | | | | | | | | |
| | DIVERSION | 0 | 0 | 0 | 0 | 0 | 0 | 0 | 0 | 0 | 0 | 0 | 0 | 0 |
| | MEAS. RETURNS | 0 | 0 | 0 | 0 | 0 | 0 | 0 | 0 | 0 | 0 | 0 | 0 | 0 |
| | UNMEAS. RETURNS | 0 | 0 | 0 | 0 | 0 | 0 | 0 | 0 | 0 | 0 | 0 | 0 | 0 |
| | CONSUMPTIVE USE | 0 | 0 | 0 | 0 | 0 | 0 | 0 | 0 | 0 | 0 | 0 | 0 | 0 |
| DESERT LAWN MEMORIAL | | | | | | | | | | | | | | |
| DIVERSION AT IMPERIAL DAM | | | | | | | | | | | | | | |
| | DIVERSION | 1 | 0 | 1 | 0 | 10 | 0 | 13 | 11 | 2 | 0 | 4 | 0 | 42 |
| | MEAS. RETURNS | 0 | 0 | 0 | 0 | 0 | 0 | 0 | 0 | 0 | 0 | 0 | 0 | 0 |
| | UNMEAS. RETURNS | 0 | 0 | 0 | 0 | 3 | 0 | 4 | 3 | 1 | 0 | 1 | 0 | 12 |
| | CONSUMPTIVE USE | 1 | 0 | 1 | 0 | 7 | 0 | 9 | 8 | 1 | 0 | 3 | 0 | 30 |
| NORTH GILA VALLEY I.D.D. | | | | | | | | | | | | | | |
| DIVERSION AT IMPERIAL DAM | | | | | | | | | | | | | | |
| 8/ | DIVERSION | 2,595 | 3,091 | 5,314 | 6,052 | 5,602 | 4,042 | 4,291 | 3,242 | 3,802 | 4,918 | 3,667 | 1,301 | 47,917 |
| | MEAS. RETURNS | 1,871 | 1,920 | 2,695 | 2,905 | 2,677 | 2,079 | 2,197 | 1,964 | 2,198 | 2,980 | 2,586 | 1,304 | 27,376 |
| | UNMEAS. RETURNS | 356 | 423 | 728 | 829 | 767 | 554 | 588 | 444 | 521 | 674 | 502 | 178 | 6,564 |
| | CONSUMPTIVE USE | 368 | 748 | 1,891 | 2,318 | 2,158 | 1,409 | 1,506 | 834 | 1,083 | 1,264 | 579 | -181 | 13,977 |

DIVERSIONS FROM MAINSTREAM-AVAILABLE RETURN FLOW
AND CONSUMPTIVE USE OF SUCH WATER
CALENDAR YEAR 2008
STATE OF ARIZONA

| WATER USER | 8/1/09 Fmts | (ACRE-FEET) | | | | | | | | | | | | TOTAL 1/ | |
|--|----------------|-----------------|---------|---------|---------|---------|---------|---------|---------|---------|---------|---------|---------|----------|-----------|
| | | JAN | FEB | MAR | APR | MAY | JUN | JUL | AUG | SEP | OCT | NOV | DEC | | |
| YUMA IRRIGATION DISTRICT | | | | | | | | | | | | | | | |
| DIVERSION AT IMPERIAL DAM | 8/10/ | DIVERSION | 3,319 | 4,919 | 7,166 | 8,631 | 7,957 | 6,244 | 6,759 | 5,515 | 5,789 | 6,464 | 4,711 | 1,839 | 69,313 |
| PUMPED FROM PRIVATE WELLS | 9/ | DIVERSION | 11 | 21 | 165 | 188 | 172 | 27 | 307 | 74 | 254 | 253 | 48 | 29 | 1,549 |
| | | MEAS. RETURNS | 811 | 1,292 | 1,669 | 1,620 | 1,565 | 1,422 | 1,589 | 1,530 | 1,371 | 1,434 | 1,220 | 919 | 16,442 |
| | | UNMEAS. RETURNS | 709 | 1,052 | 1,562 | 1,878 | 1,731 | 1,336 | 1,505 | 1,190 | 1,287 | 1,431 | 1,014 | 398 | 15,093 |
| | | CONSUMPTIVE USE | 1,810 | 2,596 | 4,100 | 5,321 | 4,833 | 3,513 | 3,972 | 2,869 | 3,385 | 3,852 | 2,525 | 551 | 39,327 |
| YUMA MESA I. D. D. | | | | | | | | | | | | | | | |
| DIVERSION AT IMPERIAL DAM | 8/ | DIVERSION | 8,290 | 10,643 | 14,346 | 17,545 | 20,390 | 23,750 | 26,191 | 22,624 | 18,258 | 14,893 | 9,507 | 5,054 | 191,491 |
| | | MEAS. RETURNS | 7,544 | 8,344 | 6,870 | 3,569 | 8,170 | 10,188 | 10,354 | 9,975 | 7,198 | 8,942 | 8,297 | 7,268 | 96,719 |
| | | UNMEAS. RETURNS | 1,326 | 1,703 | 2,295 | 2,807 | 3,262 | 3,800 | 4,191 | 3,620 | 2,921 | 2,383 | 1,521 | 809 | 30,638 |
| | | CONSUMPTIVE USE | -580 | 596 | 5,181 | 11,169 | 8,958 | 9,762 | 11,646 | 9,029 | 8,139 | 3,568 | -311 | -3,023 | 64,134 |
| UNIT B I. D. D. | | | | | | | | | | | | | | | |
| DIVERSION AT IMPERIAL DAM | | DIVERSION | 1,276 | 1,374 | 1,913 | 2,505 | 2,605 | 2,841 | 3,668 | 3,139 | 2,429 | 2,172 | 1,623 | 1,262 | 26,807 |
| | | MEAS. RETURNS | 1,323 | 1,429 | 1,174 | 613 | 1,416 | 1,732 | 1,777 | 1,679 | 1,224 | 1,564 | 1,461 | 1,385 | 16,777 |
| | | UNMEAS. RETURNS | 0 | 0 | 0 | 0 | 0 | 0 | 0 | 0 | 0 | 0 | 0 | 0 | |
| | | CONSUMPTIVE USE | -47 | -55 | 739 | 1,892 | 1,189 | 1,109 | 1,891 | 1,460 | 1,205 | 608 | 162 | -123 | 10,030 |
| FORT YUMA INDIAN RESERVATION | | | | | | | | | | | | | | | |
| DIVERSION FOR YUMA EAST WETLAND | | DIVERSION | 45 | 54 | 44 | 51 | 50 | 55 | 57 | 55 | 55 | 57 | 22 | 0 | 545 |
| RANCH "5" LANDS, YUMA ISLAND, AZ (180 ac) | | DIVERSION | 50 | 87 | 139 | 147 | 82 | 35 | 6 | 0 | 0 | 0 | 0 | 0 | 546 |
| DOMESTIC | | DIVERSION | 3 | 2 | 3 | 2 | 3 | 3 | 4 | 2 | 2 | 2 | 2 | 2 | 30 |
| | | MEAS. RETURNS | 0 | 0 | 0 | 0 | 0 | 0 | 0 | 0 | 0 | 0 | 0 | 0 | |
| | | UNMEAS. RETURNS | 59 | 78 | 89 | 96 | 74 | 61 | 54 | 49 | 49 | 51 | 20 | 1 | 681 |
| | | CONSUMPTIVE USE | 39 | 65 | 97 | 104 | 61 | 32 | 13 | 8 | 8 | 8 | 4 | 1 | 440 |
| YUMA COUNTY WATER USERS' ASSOCIATION | | | | | | | | | | | | | | | |
| DIVERSION AT IMPERIAL DAM | | DIVERSION | 19,080 | 24,757 | 41,047 | 50,114 | 41,115 | 20,999 | 26,584 | 21,031 | 22,355 | 39,878 | 27,712 | 11,048 | 345,720 |
| PUMPED FROM WELLS | | DIVERSION | 0 | 0 | 0 | 0 | 191 | 133 | 117 | 32 | 17 | 137 | 121 | 112 | 860 |
| | | MEAS. RETURNS | 6,597 | 6,687 | 6,543 | 6,862 | 7,353 | 5,146 | 5,348 | 5,142 | 6,559 | 11,337 | 11,557 | 10,455 | 89,586 |
| | | UNMEAS. RETURNS | 401 | 520 | 862 | 1,052 | 867 | 444 | 561 | 442 | 470 | 840 | 584 | 234 | 7,277 |
| | | CONSUMPTIVE USE | 12,082 | 17,550 | 33,642 | 42,200 | 33,086 | 15,542 | 20,792 | 15,479 | 15,343 | 27,838 | 15,692 | 471 | 249,717 |
| COCOPA INDIAN RESERVATION | | | | | | | | | | | | | | | |
| DIVERSION AT IMPERIAL DAM | | DIVERSION | 30 | 186 | 281 | 159 | 208 | 213 | 536 | 97 | 0 | 141 | 73 | 113 | 2,037 |
| PUMPED FROM WELLS | 11/ | DIVERSION | 121 | 152 | 207 | 223 | 274 | 332 | 364 | 348 | 273 | 229 | 163 | 161 | 2,847 |
| | | MEAS. RETURNS | 1 | 2 | 2 | 3 | 2 | 3 | 9 | 4 | 0 | 6 | 3 | 7 | 42 |
| | | UNMEAS. RETURNS | 41 | 52 | 70 | 76 | 93 | 113 | 124 | 118 | 93 | 78 | 55 | 55 | 968 |
| | | CONSUMPTIVE USE | 109 | 284 | 416 | 303 | 387 | 429 | 767 | 323 | 180 | 286 | 178 | 212 | 3,874 |
| RECLAMATION, YUMA AREA OFFICE | | | | | | | | | | | | | | | |
| Yuma Mesa Conduit and Cooper Lateral | | DIVERSION | 4 | 5 | 96 | 99 | 107 | 106 | 111 | 105 | 98 | 99 | 42 | 0 | 872 |
| | | MEAS. RETURNS | 0 | 0 | 0 | 0 | 0 | 0 | 0 | 0 | 0 | 0 | 0 | 0 | |
| | | UNMEAS. RETURNS | 0 | 0 | 0 | 0 | 0 | 0 | 0 | 0 | 0 | 0 | 0 | 0 | |
| | | CONSUMPTIVE USE | 4 | 5 | 96 | 99 | 107 | 106 | 111 | 105 | 98 | 99 | 42 | 0 | 872 |
| PUMPED FROM SOUTH GILA WELLS (DPOC'S) | | | | | | | | | | | | | | | |
| | 12/ | MEAS. RETURNS | 0 | 5,708 | 6,562 | 6,212 | 5,984 | 6,078 | 8,307 | 5,916 | 5,458 | 5,747 | 3,324 | 148 | 57,444 |
| | | UNMEAS. RETURNS | 0 | -5,708 | -6,562 | -6,212 | -5,984 | -6,078 | -6,307 | -5,916 | -5,458 | -5,747 | -3,324 | -148 | -57,444 |
| | | RETURNS CREDIT | 0 | 0 | 0 | 0 | 0 | 0 | 0 | 0 | 0 | 0 | 0 | 0 | 0 |
| OTHER USERS PUMPING FROM COLORADO | | | | | | | | | | | | | | | |
| RIVER AND WELLS IN FLOOD PLAIN DAVIS | 13/ | DIVERSION | 1,300 | 1,435 | 2,092 | 2,164 | 2,611 | 2,786 | 2,858 | 2,451 | 2,127 | 2,050 | 1,616 | 1,318 | 24,808 |
| DAM TO INTERNATIONAL BOUNDARY | | MEAS. RETURNS | 0 | 0 | 0 | 0 | 0 | 0 | 0 | 0 | 0 | 0 | 0 | 0 | |
| | | UNMEAS. RETURNS | 455 | 503 | 732 | 757 | 914 | 975 | 1,001 | 859 | 744 | 717 | 565 | 461 | 8,683 |
| | | CONSUMPTIVE USE | 845 | 932 | 1,360 | 1,407 | 1,697 | 1,811 | 1,857 | 1,592 | 1,383 | 1,333 | 1,051 | 857 | 16,125 |
| ARIZONA TOTALS | | | | | | | | | | | | | | | |
| | | DIVERSION | 252,110 | 280,765 | 371,101 | 398,161 | 393,207 | 334,659 | 305,593 | 268,382 | 268,335 | 302,913 | 281,431 | 124,817 | 3,581,474 |
| | | MEAS. RETURNS | 44,560 | 51,293 | 54,670 | 52,162 | 58,600 | 56,879 | 58,434 | 60,974 | 56,800 | 63,866 | 59,025 | 51,150 | 668,413 |
| | | UNMEAS. RETURNS | 7,086 | 6,880 | 15,376 | 19,531 | 19,249 | 20,835 | 20,389 | 16,511 | 12,856 | 9,301 | 7,062 | 5,488 | 160,564 |
| | | CONSUMPTIVE USE | 200,464 | 222,592 | 301,055 | 326,468 | 315,358 | 256,945 | 226,770 | 190,897 | 198,679 | 229,746 | 215,344 | 68,179 | 2,752,497 |

NOTE: The term 'CONSUMPTIVE USE' in this tabulation means diversions including underground pumping, less measured return flow and less current estimated unmeasured return flow to the river.

DIVERSIONS FROM MAINSTREAM-AVAILABLE RETURN FLOW
AND CONSUMPTIVE USE OF SUCH WATER
CALENDAR YEAR 2008
STATE OF ARIZONA

8/1/09

(ACRE-FEET)

| WATER USER | Ftns | JAN | FEB | MAR | APR | MAY | JUN | JUL | AUG | SEP | OCT | NOV | DEC | TOTAL 1/ |
|------------|------|-----|-----|-----|-----|-----|-----|-----|-----|-----|-----|-----|-----|----------|
|------------|------|-----|-----|-----|-----|-----|-----|-----|-----|-----|-----|-----|-----|----------|

Footnotes:

- 1/ Totals may differ from the sum of the monthly values due to rounding to the nearest acre-foot.
- 2/ Diversion amounts include deliveries to the Fort Mojave Tribe from the City of Needles CA.
- 3/ Reported as an annual total only, distributed monthly according to the monthly use patterns of nearby users.
- 4/ Havasu NWR diversion amounts have been adjusted downward for diversions out of the Topock Marsh inlet canal by Mohave Valley Irrigation and Drainage District and Fort Mojave Indian Reservation.
- 5/ The Town of Parker diversion amounts have been adjusted downward for potable water delivered to the Colorado River Indian Tribes by the Town of Parker.
- 6/ Sum of diversions by two river pumps, water delivered by the Town of Parker and an estimate of municipal diversion. Municipal diversions are estimated by multiplying CRIT's measured effluent by the Town of Parker's diversion to effluent ratio. CRIT portion of wastewater returns from Joint Venture Treatment Plant are combined with agricultural drainage measured at Scott Road gage.
- 7/ Main Outlet Drain return flow credit is measured flow at Station 0+00. During periods of sustained flow in the Gila River this measurement includes both Colorado River and Gila River water. At such times Reclamation will determine how best to differentiate return flows from the two sources.

8/ Summation for the Yuma Mesa Division, consisting of the North Gila Valley Irrigation and Drainage District, the Yuma Irrigation District, and the Yuma Mesa Irrigation and Drainage District is as follows:

| Item | Annual Totals (Acre-Feet) |
|--|---------------------------|
| Diversion at Imperial Dam | 308,721 |
| Pumped from wells | 1,549 |
| Surface returns from South Gila Valley (S.Gila Canal Wasteway) | 2,781 |
| Return flow North Gila Valley (6 drains & wasteways) | 7,980 |
| Total Yuma Mesa Division Unmeasured Returns | 52,295 |
| Return flow Yuma Mesa Outlet Drain | 37,859 |
| Return flow protective and regulatory pumping unit | 47,420 |
| Estimated unmeasured groundwater return flow | 27,912 |
| Return flow share of Gila Gravity Main Canal loss | 16,585 |
| Subtotal return flow | 192,832 |
| Consumptive Use (see note above) | 117,438 |

- (A) Total surface diversion for the North Gila Valley Irrigation and Drainage District, Yuma Irrigation District, and the Yuma Mesa Irrigation and Drainage District.
- (B) Estimated at 85 percent of the Yuma Mesa Outlet Drain with balance credited to Unit B.
- (C) Estimated at 85 percent of Protective and Regulatory Pumping Unit with balance credited to Unit B.
- (D) Estimated at 38 percent of the North Gila Valley I.D.D diversion at Imperial Dam plus 14 percent of Yuma Irrigation District diversion at Imperial Dam. (Based on analysis of the USGS Report 83-4220 entitled 'A Method for Estimating Ground-Water Return Flow to the Lower Colorado River in the Yuma Area')
- (E) Diversion times mileage weighted share of Gila Gravity Main Canal loss, less canal surface evaporation (1,397 af/yr), and phreatophytes (2,154 af/yr).

- 9/ Diversion and return values include pumpage from AEW-6,7,8,10,11,41, some of which deliver water for irrigation; others are pumped to control groundwater elevation. These wells were previously reported in the Arizona Supplemental Section.
- 10/ Diversion values have been reduced for those users (B. Ogram, G Ogram, and ASLD) who take deliveries outside District boundaries. Those diversions appear in the Arizona Supplemental section.
- 11/ Diversion amounts include pumpage from AEW-15, 16 and the Cocopah Bend R.V. Park. These wells were previously reported in the Arizona Supplemental Section.
- 12/ Until comprehensive modeling of the Yuma area to determine how unmeasured returns are affected by pumping of the DPOC wellfield is complete, this pumpage is added to Arizona's measured returns and subtracted from Arizona's unmeasured returns.
- 13/ Details may be found on the Arizona Supplemental sheets.

ARIZONA SUPPLEMENTAL TABULATION
CALENDAR YEAR 2008
STATE OF ARIZONA

| | | 8/1/09 | (ACRE-FEET) | | | | | | | | | | | | |
|--|----------------|-----------------------------|-------------|-------|-------|-------|-------|-------|-------|-------|-------|-------|-------|-------|--------|
| WATER USER | Fmts USGS # 1/ | | JAN | FEB | MAR | APR | MAY | JUN | JUL | AUG | SEP | OCT | NOV | DEC | TOTAL |
| Marble Canyon Company | | | 1 | 0 | 1 | 1 | 2 | 2 | 2 | 2 | 1 | 1 | 1 | 1 | 15 |
| SUBTOTAL, LEE FERRY TO DAVIS DAM | 2/ | DIVERSION | 1 | 0 | 1 | 1 | 2 | 2 | 2 | 2 | 1 | 1 | 1 | 1 | 15 |
| | | MEAS. RETURNS | 0 | 0 | 0 | 0 | 0 | 0 | 0 | 0 | 0 | 0 | 0 | 0 | 0 |
| | | UNMEAS. RETURNS | 0 | 0 | 0 | 0 | 1 | 1 | 1 | 1 | 0 | 0 | 0 | 0 | 4 |
| | | CONSUMPTIVE USE | 1 | 0 | 1 | 1 | 1 | 1 | 1 | 1 | 1 | 1 | 1 | 1 | 11 |
| McAlister, M. (river intake) | | | 0 | 1 | 1 | 1 | 1 | 1 | 1 | 1 | 1 | 1 | 1 | 0 | 10 |
| Crystal Beach Water Conservation District | | | 8 | 8 | 9 | 9 | 9 | 10 | 10 | 10 | 9 | 9 | 8 | 8 | 107 |
| Arizona American Water | | | 63 | 57 | 66 | 66 | 79 | 91 | 94 | 88 | 90 | 82 | 71 | 64 | 911 |
| Arizona State Parks (Windsor Beach) | | | 1 | 2 | 2 | 2 | 3 | 4 | 4 | 4 | 3 | 3 | 2 | 1 | 31 |
| SUBTOTALS, DAVIS DAM TO PARKER DAM | 2/ | DIVERSION | 72 | 68 | 78 | 78 | 92 | 106 | 109 | 103 | 103 | 95 | 82 | 73 | 1,059 |
| | | MEAS. RETURNS | 0 | 0 | 0 | 0 | 0 | 0 | 0 | 0 | 0 | 0 | 0 | 0 | 0 |
| | | UNMEAS. RETURNS | 25 | 24 | 27 | 27 | 32 | 37 | 38 | 36 | 36 | 33 | 29 | 26 | 370 |
| | | CONSUMPTIVE USE | 47 | 44 | 51 | 51 | 60 | 69 | 71 | 67 | 67 | 62 | 53 | 47 | 689 |
| Hillcrest Water Co. | | | 2 | 2 | 2 | 2 | 2 | 3 | 2 | 3 | 3 | 2 | 3 | 2 | 28 |
| Rayner, Jack Jr. | | AEP-9, AEW-35 | 154 | 192 | 262 | 283 | 346 | 419 | 458 | 441 | 346 | 290 | 206 | 203 | 3,600 |
| Arizona State Land Department (domestic use) | | | 5 | 4 | 8 | 6 | 8 | 6 | 5 | 5 | 5 | 4 | 6 | 4 | 66 |
| Arizona State Land Department (agricultural use) | | | 21 | 41 | 286 | 152 | 321 | 402 | 436 | 266 | 162 | 58 | 14 | 0 | 2,159 |
| North Baja Pipeline, LLC (TransCanada) | | | 30 | 36 | 24 | 10 | 15 | 44 | 26 | 38 | 23 | 21 | 12 | 20 | 299 |
| BLM Permittees (LHFO & YFO) | | | 38 | 73 | 61 | 55 | 71 | 84 | 78 | 120 | 73 | 102 | 57 | 46 | 858 |
| SUBTOTALS, PARKER DAM TO IMPERIAL DAM | 2/ | DIVERSION | 250 | 348 | 643 | 508 | 763 | 958 | 1,005 | 873 | 612 | 477 | 298 | 275 | 7,010 |
| | | MEAS. RETURNS | 0 | 0 | 0 | 0 | 0 | 0 | 0 | 0 | 0 | 0 | 0 | 0 | 0 |
| | | UNMEAS. RETURNS | 88 | 122 | 225 | 178 | 267 | 335 | 352 | 306 | 214 | 167 | 104 | 96 | 2,454 |
| | | CONSUMPTIVE USE | 162 | 226 | 418 | 330 | 496 | 623 | 653 | 567 | 398 | 310 | 194 | 179 | 4,556 |
| Bard Date Gardens (JRJ Partners, LLC) | | AEP-9, AEW-3 | 82 | 65 | 92 | 110 | 97 | 134 | 102 | 109 | 83 | 90 | 60 | 60 | 1,084 |
| Cha Cha (Glen Curtis Citrus) | | 3/ AEP-2/3, AEW-4/5, ADW-3 | 95 | 137 | 84 | 137 | 247 | 238 | 248 | 50 | 58 | 33 | 90 | 60 | 1,477 |
| Youmans, R. (Beatty Farms Southwest) | | 3/ ADW-2 | 42 | 53 | 72 | 78 | 95 | 115 | 126 | 121 | 95 | 80 | 57 | 56 | 990 |
| BLM Permittees (YFO) | | | 9 | 6 | 7 | 6 | 4 | 7 | 6 | 17 | 8 | 7 | 6 | 34 | 117 |
| Pratt, L. | | 3/ ADW-1 | 13 | 16 | 22 | 23 | 29 | 35 | 38 | 37 | 29 | 24 | 17 | 17 | 300 |
| Ogram, George | | 3/4/ AEW-9 Delivered by YID | 40 | 45 | 42 | 37 | 69 | 72 | 54 | 0 | 43 | 67 | 40 | 0 | 509 |
| Ogram, Bill | | 3/4/ Delivered by YID | 54 | 83 | 113 | 113 | 115 | 117 | 83 | 0 | 126 | 43 | 96 | 42 | 985 |
| Peach | | 3/ AEW-13/AEW-48 | 0 | 0 | 0 | 0 | 0 | 0 | 0 | 0 | 0 | 0 | 0 | 0 | 0 |
| Yucca Power Plant (Arizona Public Service) | | 3/ | 31 | 38 | 52 | 57 | 69 | 84 | 91 | 88 | 69 | 58 | 41 | 41 | 719 |
| Amigo Farms | | 3/ AEW-14, ADP-1 | 15 | 18 | 25 | 27 | 33 | 40 | 44 | 42 | 33 | 28 | 20 | 19 | 344 |
| Curry Family Limited | | 3/ AEP-4, ADP-2 | 12 | 14 | 20 | 21 | 26 | 32 | 34 | 33 | 26 | 22 | 15 | 15 | 270 |
| Power, P. | | 3/ ADP-3/4 | 32 | 39 | 54 | 58 | 71 | 86 | 94 | 90 | 71 | 59 | 42 | 42 | 738 |
| Pasquinelli, Gary | | 3/ ADP-5 | 34 | 34 | 68 | 68 | 34 | 34 | 0 | 0 | 0 | 68 | 68 | 68 | 476 |
| Arizona State Land Department (agricultural use) | | 4/ | 518 | 471 | 719 | 842 | 865 | 726 | 822 | 886 | 770 | 898 | 683 | 515 | 8,715 |
| SUBTOTALS, BELOW IMPERIAL DAM | 2/ | DIVERSION | 977 | 1,019 | 1,370 | 1,577 | 1,754 | 1,720 | 1,742 | 1,473 | 1,411 | 1,477 | 1,235 | 969 | 16,724 |
| | | MEAS. RETURNS | 0 | 0 | 0 | 0 | 0 | 0 | 0 | 0 | 0 | 0 | 0 | 0 | 0 |
| | | UNMEAS. RETURNS | 342 | 357 | 480 | 552 | 614 | 602 | 610 | 516 | 494 | 517 | 432 | 339 | 5,855 |
| | | CONSUMPTIVE USE | 635 | 662 | 890 | 1,025 | 1,140 | 1,118 | 1,132 | 957 | 917 | 960 | 803 | 630 | 10,869 |
| ===== | | | | | | | | | | | | | | | |
| TOTAL ARIZONA SUPPLEMENTAL TABULATION | 2/ | DIVERSION | 1,300 | 1,435 | 2,092 | 2,164 | 2,611 | 2,786 | 2,858 | 2,451 | 2,127 | 2,050 | 1,616 | 1,318 | 24,808 |
| | | MEAS. RETURNS | 0 | 0 | 0 | 0 | 0 | 0 | 0 | 0 | 0 | 0 | 0 | 0 | 0 |
| | | UNMEAS. RETURNS | 455 | 503 | 732 | 757 | 914 | 975 | 1,001 | 859 | 744 | 717 | 565 | 461 | 8,683 |
| | | CONSUMPTIVE USE | 845 | 932 | 1,360 | 1,407 | 1,697 | 1,811 | 1,857 | 1,592 | 1,383 | 1,333 | 1,051 | 857 | 16,125 |

Foot notes:

- 1/ Reference number listed on the annual USGS, Yuma Field Office report "Pumped Diversions From The Colorado River and Adjacent Floodplain", or the column contains a comment.
- 2/ Monthly and annual totals rounded and displayed to the nearest whole number.
- 3/ Calculated by assuming an annual diversion rate of six af per acre.
- 4/ George Ogram, Bill Ogram and some ALSD lands have water delivered (wheeled) to them by YID from the GGMC. A proportionate share of the loss associated with the GGMC has been assessed.

DIVERSIONS FROM MAINSTREAM-AVAILABLE RETURN FLOW
AND CONSUMPTIVE USE OF SUCH WATER
CALENDAR YEAR 2008
STATE OF CALIFORNIA

| | | 8/1/09 | (ACRE-FEET) | | | | | | | | | | | | |
|---|-------|-----------------|-------------|--------|--------|--------|--------|---------|---------|--------|--------|--------|--------|--------|----------|
| WATER USER | Frnts | | JAN | FEB | MAR | APR | MAY | JUN | JUL | AUG | SEP | OCT | NOV | DEC | TOTAL 1/ |
| FORT MOJAVE INDIAN RESERVATION | | | | | | | | | | | | | | | |
| DELIVERED BY CITY OF NEEDLES | 2/ | DIVERSION | 2 | 4 | 3 | 4 | 6 | 7 | 3 | 6 | 6 | 1 | 4 | 3 | 49 |
| PUMPED FROM RIVER AND WELLS | 2/ | DIVERSION | 295 | 917 | 1,617 | 2,158 | 1,993 | 1,093 | 2,025 | 1,163 | 1,320 | 750 | 891 | 646 | 14,868 |
| | | MEAS. RETURNS | 0 | 0 | 0 | 0 | 0 | 0 | 0 | 0 | 0 | 0 | 0 | 0 | 0 |
| | | UNMEAS. RETURNS | 137 | 426 | 749 | 999 | 924 | 508 | 937 | 540 | 613 | 347 | 414 | 300 | 6,894 |
| | | CONSUMPTIVE USE | 160 | 495 | 871 | 1,163 | 1,075 | 592 | 1,091 | 629 | 713 | 404 | 481 | 349 | 8,023 |
| CITY OF NEEDLES | | | | | | | | | | | | | | | |
| PUMPED FROM WELLS | 3/ | DIVERSION | 132 | 146 | 216 | 228 | 255 | 262 | 290 | 227 | 205 | 250 | 167 | 103 | 2,481 |
| | | MEAS. RETURNS | 32 | 29 | 33 | 47 | 52 | 40 | 41 | 42 | 38 | 46 | 55 | 49 | 504 |
| | | UNMEAS. RETURNS | 24 | 22 | 24 | 34 | 37 | 28 | 29 | 30 | 27 | 33 | 39 | 36 | 363 |
| | | CONSUMPTIVE USE | 76 | 95 | 159 | 147 | 166 | 194 | 220 | 155 | 140 | 171 | 73 | 18 | 1,614 |
| CHEMEHUEVI INDIAN RESERVATION | | | | | | | | | | | | | | | |
| PUMPED FROM RIVER AND WELLS | | DIVERSION | 16 | 19 | 27 | 29 | 35 | 43 | 46 | 45 | 35 | 29 | 21 | 20 | 365 |
| | | MEAS. RETURNS | 0 | 0 | 0 | 0 | 0 | 0 | 0 | 0 | 0 | 0 | 0 | 0 | 0 |
| | | UNMEAS. RETURNS | 7 | 9 | 12 | 13 | 16 | 20 | 21 | 21 | 16 | 13 | 10 | 9 | 167 |
| | | CONSUMPTIVE USE | 9 | 10 | 15 | 16 | 19 | 23 | 25 | 24 | 19 | 16 | 11 | 11 | 198 |
| METROPOLITAN WATER DISTRICT | | | | | | | | | | | | | | | |
| DIVERSION FROM LAKE HAVASU | | DIVERSION | 74,333 | 60,387 | 39,002 | 68,858 | 89,357 | 86,628 | 79,912 | 75,030 | 74,649 | 69,110 | 46,398 | 57,550 | 821,212 |
| SUPPLEMENTAL WATER | 4/ | DIVERSION | 381 | 357 | 381 | 369 | 381 | 369 | 381 | 381 | 369 | 381 | 369 | 1,894 | 6,013 |
| WATER EXCHANGED WITH SDCWA | 5/ | DIVERSION | 6,825 | 6,385 | 6,825 | 6,605 | 6,825 | 6,605 | 6,825 | 6,825 | 6,605 | 6,825 | 6,605 | 6,825 | 80,582 |
| | | MEAS. RETURNS | 271 | 249 | 262 | 250 | 256 | 245 | 245 | 208 | 217 | 250 | 240 | 264 | 2,957 |
| | | UNMEAS. RETURNS | 0 | 0 | 0 | 0 | 0 | 0 | 0 | 0 | 0 | 0 | 0 | 0 | 0 |
| | | CONSUMPTIVE USE | 81,268 | 66,880 | 45,946 | 75,582 | 96,307 | 93,357 | 86,873 | 82,028 | 81,406 | 76,066 | 53,132 | 66,005 | 904,850 |
| PARKER DAM AND GOVERNMENT CAMP | | | | | | | | | | | | | | | |
| DIVERSION AT PARKER DAM | 3/ | DIVERSION | 6 | 6 | 8 | 9 | 10 | 15 | 18 | 20 | 21 | 17 | 14 | 12 | 156 |
| | | MEAS. RETURNS | 0 | 0 | 0 | 0 | 0 | 0 | 0 | 0 | 0 | 0 | 0 | 0 | 0 |
| | | UNMEAS. RETURNS | 0 | 0 | 0 | 0 | 0 | 0 | 0 | 0 | 0 | 0 | 0 | 0 | 0 |
| | | CONSUMPTIVE USE | 6 | 6 | 8 | 9 | 10 | 15 | 18 | 20 | 21 | 17 | 14 | 12 | 156 |
| COLORADO RIVER INDIAN RESERVATION | | | | | | | | | | | | | | | |
| PUMPED FROM 8 PUMPS AND WELLS | | DIVERSION | 181 | 225 | 308 | 332 | 407 | 493 | 538 | 518 | 407 | 341 | 242 | 238 | 4,230 |
| 4 PUMPS, BIG RIVER | | DIVERSION | 41 | 42 | 56 | 64 | 73 | 86 | 91 | 83 | 71 | 63 | 49 | 34 | 753 |
| | | MEAS. RETURNS | 0 | 0 | 0 | 0 | 0 | 0 | 0 | 0 | 0 | 0 | 0 | 0 | 0 |
| | | UNMEAS. RETURNS | 93 | 111 | 152 | 165 | 200 | 241 | 262 | 250 | 199 | 168 | 121 | 113 | 2,075 |
| | | CONSUMPTIVE USE | 129 | 156 | 212 | 231 | 280 | 338 | 367 | 351 | 279 | 236 | 170 | 159 | 2,908 |
| CITY OF WINTERHAVEN | | | | | | | | | | | | | | | |
| PUMPED FROM ONE WELL IN FLOODPLAIN | 6/ | DIVERSION | 5 | 6 | 8 | 8 | 10 | 13 | 14 | 13 | 10 | 9 | 6 | 6 | 108 |
| | | MEAS. RETURNS | 0 | 0 | 0 | 0 | 0 | 0 | 0 | 0 | 0 | 0 | 0 | 0 | 0 |
| | | UNMEAS. RETURNS | 2 | 2 | 3 | 3 | 3 | 4 | 5 | 4 | 3 | 3 | 2 | 2 | 36 |
| | | CONSUMPTIVE USE | 3 | 4 | 5 | 5 | 7 | 9 | 9 | 9 | 7 | 6 | 4 | 4 | 72 |
| PALO VERDE IRRIGATION DISTRICT | | | | | | | | | | | | | | | |
| DIVERSION FROM PALO VERDE DAM | | DIVERSION | 31,530 | 54,740 | 76,260 | 88,090 | 93,760 | 103,600 | 106,000 | 99,350 | 83,030 | 64,800 | 46,220 | 33,840 | 881,220 |
| | | MEAS. RETURNS | 28,089 | 30,761 | 36,049 | 40,428 | 42,364 | 42,669 | 44,425 | 42,793 | 43,267 | 39,441 | 35,464 | 31,125 | 456,875 |
| | | UNMEAS. RETURNS | 1,766 | 3,065 | 4,271 | 4,933 | 5,251 | 5,802 | 5,936 | 5,564 | 4,650 | 3,629 | 2,588 | 1,895 | 49,350 |
| | | CONSUMPTIVE USE | 1,675 | 20,914 | 35,940 | 42,729 | 46,145 | 55,129 | 55,639 | 50,993 | 35,113 | 21,730 | 8,168 | 820 | 374,995 |
| YUMA PROJECT, RESERVATION DIVISION, INDIAN UNIT | | | | | | | | | | | | | | | |
| DIVERSION AT IMPERIAL DAM | | DIVERSION | 2,463 | 3,867 | 6,710 | 8,758 | 6,083 | 1,956 | 2,700 | 3,000 | 1,633 | 3,829 | 2,897 | 1,353 | 45,249 |
| DOMESTIC | 7/ | DIVERSION | 34 | 42 | 58 | 63 | 76 | 93 | 101 | 97 | 77 | 64 | 46 | 44 | 795 |
| | | MEAS. RETURNS | 46 | 30 | 42 | 117 | 55 | 23 | 37 | 95 | 53 | 137 | 97 | 74 | 806 |
| | | UNMEAS. RETURNS | 427 | 665 | 1,146 | 1,491 | 1,050 | 368 | 496 | 544 | 307 | 668 | 504 | 246 | 7,912 |
| YUMA PROJECT, RESERVATION DIVISION, BARD UNIT | | | | | | | | | | | | | | | |
| DIVERSION AT IMPERIAL DAM | | DIVERSION | 1,966 | 2,441 | 4,913 | 6,068 | 5,796 | 3,529 | 3,373 | 3,299 | 3,663 | 5,120 | 3,295 | 1,105 | 44,568 |
| | | MEAS. RETURNS | 23 | 12 | 18 | 49 | 29 | 26 | 29 | 60 | 74 | 111 | 56 | 31 | 518 |
| | | UNMEAS. RETURNS | 328 | 408 | 820 | 1,013 | 968 | 589 | 563 | 551 | 612 | 855 | 550 | 185 | 7,442 |
| RETURNS FROM YUMA PROJECT, | | | | | | | | | | | | | | | |
| RESERVATION DIVISION RETURNS | 8/ | MEAS. RETURNS | 2,140 | 1,632 | 2,173 | 2,497 | 2,850 | 2,067 | 2,024 | 2,084 | 2,450 | 3,052 | 2,579 | 2,794 | 28,342 |
| SUM YUMA PROJECT, RESERVATION DIVISION USE | | CONSUMPTIVE USE | 1,499 | 3,603 | 7,482 | 9,722 | 7,003 | 2,505 | 3,025 | 3,062 | 1,877 | 4,190 | 2,452 | -828 | 45,592 |

DIVERSIONS FROM MAINSTREAM-AVAILABLE RETURN FLOW
AND CONSUMPTIVE USE OF SUCH WATER
CALENDAR YEAR 2008
STATE OF CALIFORNIA

| WATER USER | 8/1/09 Frts | (ACRE-FEET) | | | | | | | | | | | | TOTAL 1/ | |
|--|----------------|--------------------|---------|---------|---------|---------|---------|---------|---------|---------|---------|---------|---------|----------|-----------|
| | | JAN | FEB | MAR | APR | MAY | JUN | JUL | AUG | SEP | OCT | NOV | DEC | | |
| IMPERIAL IRRIGATION DISTRICT DIVERSION AT IMPERIAL DAM | | DIVERSION | 121,090 | 179,039 | 302,559 | 354,756 | 326,038 | 294,192 | 324,639 | 288,199 | 234,857 | 221,274 | 164,539 | 107,926 | 2,919,108 |
| | | MEAS. RETURNS | 3,862 | 2,346 | 3,122 | 7,878 | 4,768 | 6,256 | 7,907 | 14,804 | 12,247 | 13,301 | 8,476 | 9,025 | 93,992 |
| | | UNMEAS. RETURNS | 0 | 0 | 0 | 0 | 0 | 0 | 0 | 0 | 0 | 0 | 0 | 0 | 0 |
| | | CONSUMPTIVE USE | 117,228 | 176,693 | 299,437 | 346,878 | 321,270 | 287,936 | 316,732 | 273,395 | 222,610 | 207,973 | 156,063 | 98,901 | 2,825,116 |
| WATER TRANSFERRED TO SDCWA (MITIGATION) | 9/ | DIVERSION | 0 | 1,866 | 2,740 | 791 | 2,351 | 1,667 | 1,013 | 1,044 | 3,496 | 5,239 | 6,527 | 439 | 27,173 |
| | | MEAS. RETURNS | 0 | 24 | 28 | 18 | 34 | 35 | 25 | 54 | 182 | 315 | 336 | 37 | 1,088 |
| | | CA CONSUMPTIVE USE | 0 | 1,842 | 2,712 | 773 | 2,317 | 1,632 | 988 | 990 | 3,314 | 4,924 | 6,191 | 402 | 26,085 |
| COACHELLA VALLEY WATER DISTRICT DIVERSION AT IMPERIAL DAM | | DIVERSION | 11,839 | 14,944 | 23,217 | 27,351 | 31,031 | 33,546 | 34,836 | 32,974 | 28,182 | 29,448 | 26,577 | 16,214 | 310,159 |
| | | MEAS. RETURNS | 378 | 196 | 240 | 607 | 454 | 713 | 848 | 1,694 | 1,470 | 1,770 | 1,369 | 1,356 | 11,095 |
| | | UNMEAS. RETURNS | 0 | 0 | 0 | 0 | 0 | 0 | 0 | 0 | 0 | 0 | 0 | 0 | 0 |
| | | CONSUMPTIVE USE | 11,461 | 14,748 | 22,977 | 26,744 | 30,577 | 32,833 | 33,988 | 31,280 | 26,712 | 27,678 | 25,208 | 14,858 | 299,064 |
| OTHER USERS PUMPING FROM COLORADO RIVER AND WELLS IN FLOOD PLAIN DAVIS DAM TO INTERNATIONAL BOUNDARY | 10/ | DIVERSION | 837 | 1,081 | 1,528 | 1,631 | 1,817 | 2,061 | 2,194 | 2,092 | 1,648 | 1,376 | 979 | 960 | 18,203 |
| | | MEAS. RETURNS | 8 | 10 | 13 | 15 | 19 | 23 | 25 | 24 | 19 | 16 | 11 | 10 | 193 |
| | | UNMEAS. RETURNS | 361 | 470 | 661 | 709 | 786 | 892 | 947 | 903 | 712 | 595 | 423 | 414 | 7,873 |
| | | CONSUMPTIVE USE | 468 | 601 | 854 | 907 | 1,012 | 1,146 | 1,222 | 1,165 | 917 | 765 | 545 | 536 | 10,137 |
| CALIFORNIA TOTALS | | DIVERSION | 251,976 | 326,514 | 466,436 | 566,172 | 566,304 | 536,258 | 564,999 | 514,366 | 440,284 | 408,926 | 305,846 | 229,212 | 5,177,292 |
| | | MEAS. RETURNS | 34,849 | 35,289 | 41,980 | 51,906 | 50,881 | 52,097 | 55,606 | 61,858 | 60,017 | 58,439 | 48,683 | 44,765 | 596,370 |
| | | UNMEAS. RETURNS | 3,145 | 5,178 | 7,838 | 9,360 | 9,235 | 8,452 | 9,196 | 8,407 | 7,139 | 6,311 | 4,651 | 3,200 | 82,112 |
| | | CONSUMPTIVE USE | 213,982 | 286,047 | 416,618 | 504,906 | 506,188 | 475,709 | 500,197 | 444,101 | 373,128 | 344,176 | 252,512 | 181,247 | 4,498,810 |

Note: The term 'CONSUMPTIVE USE' as used in this tabulation means diversions, including ground water pumping, less measured return flow and less current estimated unmeasured return flow to the river.

Footnotes:

- 1/ Totals may differ from the sum of the monthly values due to rounding to the nearest acre-foot.
- 2/ Diversion amounts include deliveries to the Fort Mojave Tribe by the City of Needles. Diversion values listed as pumped from river and wells are provided by the Fort Mojave Tribe and Reclamation.
- 3/ A portion of this Colorado River use is offset by pumping from the LCWSP. Details shown in the LCWSP section of this report.
- 4/ Water available to MWD which would have been available for allocation to the San Luis Rey Settlement Parties (SLRSP) as a result of the CCLP and the AACLP had the requirements of Section 104 of Public Law 100-675 as amended been satisfied. Water delivered to MWD pursuant to Section 7.6 of the October 10, 2003 Allocation Agreement.
- 5/ Water conserved by (i) IID and transferred to SDCWA, in accordance with the CRWDA, Exhibit B, Column 5, and the IID/SDCWA Water Transfer Agreement and (ii) water allocated to SDCWA as a result of the CCLP and AACLP pursuant to Article 10 of the October 10, 2003 Allocation Agreement. At SDCWA's election, the water was delivered by the Secretary to Lake Havasu under Article 4(c) of the CRWDA and there made available by SDCWA to MWD under the terms of the SDCWA/MWD Exchange Agreement.
- 6/ Reported as an annual total only, distributed monthly according to the monthly use patterns of nearby users.
- 7/ These values represent an estimate of the amount of diversions required by the Tribe to provide domestic water service for users within the reservation.
- 8/ Unassigned measured returns include drainage from the Indian Unit and the Bard Unit in the Reservation Division but excludes seepage from the AAC.
- 9/ This entry represents water conserved by IID, transferred to SDCWA and delivered to the Salton Sea, in accordance with CRWDA, Exhibit B, Column 7, and the IID/SDCWA Water Transfer Agreement, as amended.
- 10/ Details can be found on the California Supplemental page.

CALIFORNIA SUPPLEMENTAL TABULATION
CALENDAR YEAR 2008
STATE OF CALIFORNIA

| 8/1/09 | | | (ACRE-FEET) | | | | | | | | | | | | |
|--|------|-----------------------|-------------|-----|-----|-----|-------|-------|-------|-------|-------|-----|-----|-----|--------|
| WATER USER | Fmts | USGS# 1/ | JAN | FEB | MAR | APR | MAY | JUN | JUL | AUG | SEP | OCT | NOV | DEC | TOTAL |
| De Soto Ranch | 2/ | CEW-17 | 0 | 0 | 0 | 0 | 0 | 0 | 0 | 0 | 0 | 0 | 0 | 0 | 0 |
| De Soto Ranch | 2/ | CEW-18 | 0 | 0 | 0 | 0 | 0 | 0 | 0 | 0 | 0 | 0 | 0 | 0 | 0 |
| Southern Cal Gas | 3/ | CEW-21 | 3 | 3 | 5 | 5 | 6 | 8 | 8 | 8 | 6 | 5 | 4 | 4 | 65 |
| Pacific Gas & Electric Company | 3/ | | 12 | 15 | 21 | 22 | 28 | 33 | 36 | 35 | 28 | 23 | 16 | 16 | 285 |
| Havasu Water Company | 3/ | Needles rpt. | 2 | 3 | 3 | 3 | 4 | 5 | 5 | 5 | 4 | 3 | 3 | 2 | 42 |
| Vista Del Lago | 3/ | Needles rpt. | 0 | 0 | 1 | 2 | 2 | 2 | 2 | 2 | 2 | 1 | 1 | 0 | 15 |
| Wells reported under non-Federal subcontracts to LCWSP | 3/ | Needles rpt. | 13 | 16 | 22 | 23 | 28 | 35 | 38 | 36 | 28 | 24 | 17 | 16 | 296 |
| SUBTOTALS, DAVIS DAM TO PARKER DAM | 4/ | DIVERSION | 30 | 37 | 52 | 55 | 68 | 83 | 89 | 86 | 68 | 56 | 41 | 38 | 703 |
| | 3a/ | MEAS. RETURNS | 8 | 10 | 13 | 15 | 19 | 23 | 25 | 24 | 19 | 16 | 11 | 10 | 193 |
| | | UNMEAS. RETURNS | 6 | 8 | 10 | 11 | 14 | 17 | 18 | 17 | 14 | 11 | 8 | 7 | 141 |
| | | CONSUMPTIVE USE | 16 | 19 | 29 | 29 | 35 | 43 | 46 | 45 | 35 | 29 | 22 | 21 | 369 |
| Wetmore, Kenneth C. | | | 0 | 0 | 0 | 0 | 1 | 1 | 1 | 1 | 1 | 0 | 0 | 0 | 5 |
| Williams, Jerry O. & Deloris P. | | | 0 | 0 | 0 | 0 | 0 | 0 | 1 | 0 | 0 | 0 | 0 | 0 | 1 |
| Camey, Jerome D. | | | 0 | 0 | 0 | 0 | 0 | 1 | 0 | 0 | 0 | 0 | 0 | 0 | 1 |
| Wetmore, Mark M. | | | 0 | 0 | 1 | 1 | 1 | 1 | 1 | 1 | 1 | 1 | 1 | 0 | 9 |
| Citrus Ranch (Lye, C. L.) | 2/ | CEW-16 | 1 | 2 | 3 | 3 | 4 | 4 | 5 | 5 | 4 | 3 | 2 | 2 | 38 |
| Lake Enterprises of California | | | 2 | 2 | 1 | 2 | 2 | 3 | 4 | 3 | 2 | 0 | 0 | 0 | 21 |
| BLM Permitees (LHFO & YFO) | 3/5/ | | 25 | 19 | 41 | 32 | 53 | 41 | 58 | 50 | 41 | 33 | 26 | 23 | 442 |
| SUBTOTALS, PARKER DAM TO IMPERIAL DAM | 4/ | DIVERSION | 28 | 23 | 46 | 38 | 61 | 51 | 70 | 60 | 49 | 37 | 29 | 25 | 517 |
| | | BLM UNMEAS. RETURNS | 6 | 4 | 10 | 8 | 13 | 10 | 15 | 12 | 10 | 8 | 7 | 5 | 108 |
| | | UNMEAS. RETURNS | 1 | 2 | 2 | 3 | 4 | 4 | 5 | 4 | 4 | 2 | 1 | 1 | 33 |
| | | CONSUMPTIVE USE | 21 | 17 | 34 | 27 | 44 | 37 | 50 | 44 | 35 | 27 | 21 | 19 | 376 |
| FORT YUMA IR - CA | | | | | | | | | | | | | | | |
| Valdez, Mike | 2/ | CDP-1, 2, CEW-1 | 26 | 32 | 44 | 47 | 58 | 70 | 76 | 73 | 58 | 48 | 34 | 34 | 600 |
| Fort Yuma Indian Tribe | 2/ | CEW-2, CDP-3 | 1 | 1 | 2 | 2 | 2 | 3 | 3 | 3 | 2 | 2 | 2 | 1 | 24 |
| Mike Valdez | 2/ | CEW-3,CDP-4,CDW-1 | 123 | 154 | 210 | 226 | 277 | 336 | 366 | 352 | 277 | 232 | 165 | 162 | 2,880 |
| MivCo Packing | 2/ | CEW-14 | 30 | 38 | 51 | 56 | 68 | 83 | 90 | 87 | 68 | 57 | 40 | 40 | 708 |
| Valdez, Mike | 2/ | CEW-15 | 0 | 0 | 0 | 0 | 0 | 0 | 0 | 0 | 0 | 0 | 0 | 0 | 0 |
| Ranch "5" Lands, Yuma Island, CA (351 ac) | 6/ | AAC diversion | 98 | 171 | 272 | 287 | 160 | 68 | 12 | 0 | 0 | 0 | 0 | 0 | 1,067 |
| Huerta Packing | 2/ | CDP-6/7 | 0 | 0 | 0 | 0 | 0 | 0 | 0 | 0 | 0 | 0 | 0 | 0 | 0 |
| SUM OF PUMPING ON FYIR - CA | 4/ | DIVERSION | 278 | 396 | 579 | 618 | 565 | 560 | 547 | 515 | 405 | 339 | 241 | 237 | 5,279 |
| SUM OF UNMEASURED RETURNS, FYIR - CA | | UNMEAS. RETURNS | 124 | 177 | 259 | 276 | 253 | 250 | 244 | 230 | 181 | 152 | 108 | 106 | 2,360 |
| YUMA ISLAND - CA | | | | | | | | | | | | | | | |
| Arizona State Land Department Lessees | | | | | | | | | | | | | | | |
| Martin Family Trust | 2/ | CEP-01,02,CDW-07 | 38 | 48 | 66 | 71 | 86 | 105 | 114 | 110 | 87 | 73 | 51 | 51 | 900 |
| Billy Turner | 2/ | CEW-08,CEP-03,CDP-05 | 30 | 37 | 50 | 54 | 66 | 81 | 88 | 84 | 66 | 56 | 39 | 39 | 690 |
| Leroy Heile | 2/ | CDEW-01,CEW-07,CDW-06 | 49 | 61 | 83 | 90 | 109 | 133 | 145 | 139 | 110 | 92 | 65 | 64 | 1,140 |
| James Williams | 2/ | CDW-5 | 11 | 14 | 18 | 20 | 24 | 29 | 32 | 31 | 24 | 20 | 15 | 14 | 252 |
| Griffin Produce Company | 2/ | CEW-04,05,CDW-03 | 67 | 83 | 113 | 123 | 150 | 182 | 198 | 191 | 150 | 126 | 89 | 88 | 1,560 |
| Perez Family Trust | 2/ | CEW-06,CDW-04 | 40 | 50 | 68 | 73 | 89 | 108 | 118 | 114 | 90 | 75 | 53 | 52 | 930 |
| Clifford Winton Jr. | 2/7/ | | 10 | 12 | 17 | 18 | 22 | 26 | 29 | 28 | 22 | 18 | 13 | 13 | 228 |
| Clara Jean Wilson | 2/7/ | | 10 | 13 | 17 | 19 | 23 | 28 | 31 | 29 | 23 | 19 | 14 | 14 | 240 |
| Lou Ella Harp | 2/7/ | | 26 | 33 | 45 | 49 | 59 | 72 | 79 | 76 | 59 | 50 | 35 | 35 | 618 |
| Robert E. Harp | 2/7/ | | 18 | 23 | 31 | 34 | 42 | 50 | 55 | 53 | 42 | 35 | 25 | 24 | 432 |
| Leroy Heile | 2/ | CDW-8 | 30 | 37 | 50 | 54 | 66 | 81 | 88 | 84 | 66 | 56 | 39 | 39 | 690 |
| K.H. Easterday | 2/ | CEW-10,22 | 48 | 59 | 81 | 87 | 107 | 129 | 141 | 136 | 107 | 89 | 63 | 63 | 1,110 |
| Wilson Farms | 2/ | CEW-11 | 14 | 17 | 24 | 26 | 32 | 38 | 42 | 40 | 32 | 27 | 19 | 19 | 330 |
| R. Harp | 2/ | CDW-2 | 32 | 40 | 55 | 59 | 72 | 88 | 95 | 92 | 72 | 60 | 43 | 42 | 750 |
| Dees, Alex | 2/ | CEW-9 | 45 | 56 | 76 | 82 | 101 | 122 | 134 | 129 | 101 | 85 | 60 | 59 | 1,050 |
| Mike Palmer (Power, L.O.) | 2/ | CEW-13 | 33 | 42 | 57 | 61 | 75 | 91 | 99 | 95 | 75 | 63 | 45 | 44 | 780 |
| SUM OF PUMPING ON YUMA ISLAND - CA | 4/ | DIVERSION | 501 | 625 | 851 | 920 | 1,123 | 1,367 | 1,488 | 1,431 | 1,126 | 944 | 668 | 660 | 11,704 |
| SUM OF UNMEASURED RETURNS, YUMA ISLAND - CA | | UNMEAS. RETURNS | 224 | 279 | 380 | 411 | 502 | 611 | 665 | 640 | 503 | 422 | 299 | 295 | 5,231 |

CALIFORNIA SUPPLEMENTAL TABULATION
CALENDAR YEAR 2008
STATE OF CALIFORNIA

| WATER USER | 8/1/09 | | (ACRE-FEET) | | | | | | | | | | | | | |
|--|--------|----------|-----------------|-----|-------|-------|-------|-------|-------|-------|-------|-------|-------|-----|-------|--------|
| | Fmts | USGS# 1/ | JAN | FEB | MAR | APR | MAY | JUN | JUL | AUG | SEP | OCT | NOV | DEC | TOTAL | |
| SUBTOTALS, ALL USES BELOW IMPERIAL DAM | | | DIVERSION | 779 | 1,021 | 1,430 | 1,538 | 1,688 | 1,927 | 2,035 | 1,946 | 1,531 | 1,283 | 909 | 897 | 16,983 |
| | | | MEAS. RETURNS | 0 | 0 | 0 | 0 | 0 | 0 | 0 | 0 | 0 | 0 | 0 | 0 | 0 |
| | | | UNMEAS. RETURNS | 348 | 456 | 639 | 687 | 755 | 861 | 909 | 870 | 684 | 574 | 407 | 401 | 7,591 |
| | | | CONSUMPTIVE USE | 431 | 565 | 791 | 851 | 933 | 1,066 | 1,126 | 1,076 | 847 | 709 | 502 | 496 | 9,392 |
| TOTAL CALIFORNIA SUPPLEMENTAL TABULATION | | | DIVERSION | 837 | 1,081 | 1,528 | 1,631 | 1,817 | 2,061 | 2,194 | 2,092 | 1,648 | 1,376 | 979 | 960 | 18,203 |
| | | | MEAS. RETURNS | 8 | 10 | 13 | 15 | 19 | 23 | 25 | 24 | 19 | 16 | 11 | 10 | 193 |
| | | | UNMEAS. RETURNS | 361 | 470 | 661 | 709 | 786 | 892 | 947 | 903 | 712 | 595 | 423 | 414 | 7,873 |
| | | | CONSUMPTIVE USE | 468 | 601 | 854 | 907 | 1,012 | 1,146 | 1,222 | 1,165 | 917 | 765 | 545 | 536 | 10,137 |

Footnotes:

- 1/ Reference number listed on the annual USGS Yuma Field Office report "Pumped Diversions From The Colorado River and Adjacent Floodplain" or the column contains a comment.
- 2/ Calculated by assuming an annual diversion rate of six af per acre.
- 3/ Tabulated use is offset by pumping from the LCWSP. Details shown in the LCWSP Section of this report.
- 3a/ This measured return is provided to Pacific Gas & Electric Company alone for water that has been diverted and reinjected as part of its Topock Groundwater Remediation Project.
- 4/ Monthly and annual totals rounded to the nearest whole number.
- 5/ At the request of BLM, site specific unmeasured return flow factors have been developed and applied in CA. Some BLM lessees have very limited returns due to evaporation ponds and low application rates.
- 6/ Surface water diversions from the AAC through Bard Water District. Diversion calculated by prorating total measured delivery by irrigated acreage in each state. Bard Water District diversion has been reduced by the total delivery to Ranch 5 in AZ and CA.
- 7/ Acreage irrigated by co-mingled diversions from multiple wells. Diversion calculated using the acreage factor outlined in footnote 2/ above.

DIVERSIONS FROM MAINSTREAM-AVAILABLE RETURN FLOW
AND CONSUMPTIVE USE OF SUCH WATER
CALENDAR YEAR 2008
STATE OF NEVADA

| WATER USER | 8/1/09 Ftrts | (ACRE-FEET) | | | | | | | | | | | | TOTAL 1/ |
|---|-----------------|-------------|--------|--------|--------|--------|--------|--------|--------|--------|--------|--------|--------|----------|
| | | JAN | FEB | MAR | APR | MAY | JUN | JUL | AUG | SEP | OCT | NOV | DEC | |
| BOULDER CANYON PROJECT | | | | | | | | | | | | | | |
| DIVERSION AT HOOVER DAM | DIVERSION | 4 | 4 | 4 | 4 | 4 | 5 | 5 | 5 | 5 | 5 | 4 | 3 | 52 |
| | MEAS. RETURNS | 2 | 3 | 2 | 3 | 3 | 3 | 3 | 3 | 3 | 3 | 3 | 3 | 34 |
| | UNMEAS. RETURNS | 0 | 0 | 0 | 0 | 0 | 0 | 0 | 0 | 0 | 0 | 0 | 0 | 0 |
| | CONSUMPTIVE USE | 2 | 1 | 2 | 1 | 1 | 2 | 2 | 2 | 2 | 2 | 1 | 0 | 18 |
| ROBERT B. GRIFFITH WATER PROJECT | | | | | | | | | | | | | | |
| DIVERSION AT SADDLE ISLAND, LAKE MEAD | DIVERSION | 31,819 | 25,900 | 33,743 | 37,813 | 42,749 | 42,566 | 46,380 | 48,044 | 37,473 | 41,694 | 31,016 | 25,988 | 445,185 |
| LAKE MEAD NATIONAL RECREATION AREA | | | | | | | | | | | | | | |
| DIVERSIONS FROM LAKE MEAD | DIVERSION | 49 | 31 | 51 | 48 | 50 | 52 | 60 | 59 | 54 | 46 | 36 | 31 | 567 |
| | MEAS. RETURNS | 0 | 0 | 0 | 0 | 0 | 0 | 0 | 0 | 0 | 0 | 0 | 0 | 0 |
| | UNMEAS. RETURNS | 0 | 0 | 0 | 0 | 0 | 0 | 0 | 0 | 0 | 0 | 0 | 0 | 0 |
| | CONSUMPTIVE USE | 49 | 31 | 51 | 48 | 50 | 52 | 60 | 59 | 54 | 46 | 36 | 31 | 567 |
| LAKE MEAD NATIONAL RECREATION AREA | | | | | | | | | | | | | | |
| DIVERSION FROM LAKE MOHAVE (COTTONWOOD COVE) | DIVERSION | 16 | 18 | 21 | 18 | 21 | 10 | 26 | 20 | 17 | 15 | 14 | 13 | 209 |
| | MEAS. RETURNS | 0 | 0 | 0 | 0 | 0 | 0 | 0 | 0 | 0 | 0 | 0 | 0 | 0 |
| | UNMEAS. RETURNS | 0 | 0 | 0 | 0 | 0 | 0 | 0 | 0 | 0 | 0 | 0 | 0 | 0 |
| | CONSUMPTIVE USE | 16 | 18 | 21 | 18 | 21 | 10 | 26 | 20 | 17 | 15 | 14 | 13 | 209 |
| BASIC MANAGEMENT INC. | | | | | | | | | | | | | | |
| DIVERSION AT LAKE MEAD | DIVERSION | 403 | 396 | 397 | 486 | 619 | 583 | 547 | 704 | 506 | 508 | 301 | 498 | 5,948 |
| | MEAS. RETURNS | 0 | 0 | 0 | 0 | 0 | 0 | 0 | 0 | 0 | 0 | 0 | 0 | 0 |
| | UNMEAS. RETURNS | 0 | 0 | 0 | 0 | 0 | 0 | 0 | 0 | 0 | 0 | 0 | 0 | 0 |
| | CONSUMPTIVE USE | 403 | 396 | 397 | 486 | 619 | 583 | 547 | 704 | 506 | 508 | 301 | 498 | 5,948 |
| CITY OF HENDERSON | | | | | | | | | | | | | | |
| DIVERSION AT LAKE MEAD | DIVERSION | 775 | 706 | 1,066 | 1,487 | 2,124 | 1,817 | 2,094 | 1,597 | 1,345 | 1,530 | 1,116 | 870 | 16,527 |
| | MEAS. RETURNS | 0 | 0 | 0 | 0 | 0 | 0 | 0 | 0 | 0 | 0 | 0 | 0 | 0 |
| | UNMEAS. RETURNS | 0 | 0 | 0 | 0 | 0 | 0 | 0 | 0 | 0 | 0 | 0 | 0 | 0 |
| | CONSUMPTIVE USE | 775 | 706 | 1,066 | 1,487 | 2,124 | 1,817 | 2,094 | 1,597 | 1,345 | 1,530 | 1,116 | 870 | 16,527 |
| NEVADA DEPARTMENT OF FISH AND GAME | | | | | | | | | | | | | | |
| DIVERSION AT LAKE MEAD | DIVERSION | 4 | 3 | 2 | 5 | 5 | 5 | 6 | 6 | 6 | 6 | 6 | 4 | 58 |
| | MEAS. RETURNS | 3 | 2 | 1 | 5 | 4 | 5 | 5 | 6 | 5 | 5 | 5 | 3 | 49 |
| | UNMEAS. RETURNS | 0 | 0 | 0 | 0 | 0 | 0 | 0 | 0 | 0 | 0 | 0 | 0 | 0 |
| | CONSUMPTIVE USE | 1 | 1 | 1 | 0 | 1 | 0 | 1 | 1 | 0 | 1 | 1 | 1 | 9 |
| CITY OF BOULDER CITY | | | | | | | | | | | | | | |
| DIVERSION AT HOOVER DAM | DIVERSION | 0 | 0 | 0 | 0 | 0 | 0 | 0 | 0 | 0 | 0 | 0 | 0 | 0 |
| | MEAS. RETURNS | 0 | 0 | 0 | 0 | 0 | 0 | 0 | 0 | 0 | 0 | 0 | 0 | 0 |
| | UNMEAS. RETURNS | 0 | 0 | 0 | 0 | 0 | 0 | 0 | 0 | 0 | 0 | 0 | 0 | 0 |
| | CONSUMPTIVE USE | 0 | 0 | 0 | 0 | 0 | 0 | 0 | 0 | 0 | 0 | 0 | 0 | 0 |
| PACIFIC COAST BUILDING PRODUCTS INC. | | | | | | | | | | | | | | |
| DIVERSION AT GYPSUM WASH, LAKE MEAD | DIVERSION | 66 | 70 | 78 | 87 | 80 | 59 | 89 | 93 | 91 | 76 | 42 | 45 | 876 |
| | MEAS. RETURNS | 0 | 0 | 0 | 0 | 0 | 0 | 0 | 0 | 0 | 0 | 0 | 0 | 0 |
| | UNMEAS. RETURNS | 0 | 0 | 0 | 0 | 0 | 0 | 0 | 0 | 0 | 0 | 0 | 0 | 0 |
| | CONSUMPTIVE USE | 66 | 70 | 78 | 87 | 80 | 59 | 89 | 93 | 91 | 76 | 42 | 45 | 876 |
| MOHAVE GENERATING STATION (SCE) | | | | | | | | | | | | | | |
| PUMPED FROM 1 WELL | DIVERSION | 36 | 35 | 40 | 41 | 41 | 42 | 46 | 45 | 41 | 45 | 41 | 38 | 491 |
| | MEAS. RETURNS | 0 | 0 | 0 | 0 | 0 | 0 | 0 | 0 | 0 | 0 | 0 | 0 | 0 |
| | UNMEAS. RETURNS | 0 | 0 | 0 | 0 | 0 | 0 | 0 | 0 | 0 | 0 | 0 | 0 | 0 |
| | CONSUMPTIVE USE | 36 | 35 | 40 | 41 | 41 | 42 | 46 | 45 | 41 | 45 | 41 | 38 | 491 |
| BIG BEND WATER DISTRICT | | | | | | | | | | | | | | |
| | DIVERSION | 289 | 286 | 336 | 376 | 420 | 434 | 472 | 458 | 397 | 377 | 308 | 280 | 4,433 |
| | MEAS. RETURNS | 195 | 191 | 219 | 210 | 220 | 206 | 235 | 235 | 207 | 200 | 177 | 154 | 2,449 |
| | UNMEAS. RETURNS | 0 | 0 | 0 | 0 | 0 | 0 | 0 | 0 | 0 | 0 | 0 | 0 | 0 |
| | CONSUMPTIVE USE | 94 | 95 | 117 | 166 | 200 | 228 | 237 | 223 | 190 | 177 | 131 | 126 | 1,984 |
| FORT MOJAVE INDIAN RESERVATION | | | | | | | | | | | | | | |
| PUMPED FROM 2 WELLS IN FLOODPLAIN | DIVERSION | 207 | 353 | 385 | 785 | 883 | 950 | 635 | 544 | 451 | 182 | 131 | 122 | 5,628 |
| | MEAS. RETURNS | 0 | 0 | 0 | 0 | 0 | 0 | 0 | 0 | 0 | 0 | 0 | 0 | 0 |
| | UNMEAS. RETURNS | 68 | 116 | 127 | 259 | 291 | 314 | 210 | 180 | 149 | 60 | 43 | 40 | 1,857 |
| | CONSUMPTIVE USE | 139 | 237 | 258 | 526 | 592 | 636 | 425 | 364 | 302 | 122 | 88 | 82 | 3,771 |

DIVERSIONS FROM MAINSTREAM-AVAILABLE RETURN FLOW
AND CONSUMPTIVE USE OF SUCH WATER
CALENDAR YEAR 2008
STATE OF NEVADA

| WATER USER | 8/1/09 | (ACRE-FEET) | | | | | | | | | | | | TOTAL 1/ |
|--|-----------------|-------------|--------|--------|--------|--------|--------|--------|--------|--------|--------|--------|--------|----------|
| | Ftnts | JAN | FEB | MAR | APR | MAY | JUN | JUL | AUG | SEP | OCT | NOV | DEC | |
| LAS VEGAS WASH RETURN FLOWS | 3/ RETURNS | 18715 | 16,612 | 17,994 | 16,070 | 15,962 | 14,874 | 15,882 | 16,960 | 17,084 | 18,018 | 17,858 | 19,902 | 205,931 |
| OTHER USERS PUMPING FROM COLORADO RIVER AND WELLS IN FLOOD PLAIN | DIVERSION | 0 | 0 | 0 | 0 | 0 | 0 | 0 | 0 | 0 | 0 | 0 | 0 | 0 |
| DAVIS DAM TO CALIFORNIA BOUNDARY | MEAS. RETURNS | 0 | 0 | 0 | 0 | 0 | 0 | 0 | 0 | 0 | 0 | 0 | 0 | 0 |
| | UNMEAS. RETURNS | 0 | 0 | 0 | 0 | 0 | 0 | 0 | 0 | 0 | 0 | 0 | 0 | 0 |
| | CONSUMPTIVE USE | 0 | 0 | 0 | 0 | 0 | 0 | 0 | 0 | 0 | 0 | 0 | 0 | 0 |
| NEVADA TOTALS | DIVERSION | 33,668 | 27,802 | 36,123 | 41,150 | 46,996 | 46,523 | 50,360 | 51,575 | 40,386 | 44,484 | 33,015 | 27,892 | 479,974 |
| | MEAS. RETURNS | 18,915 | 16,808 | 18,216 | 16,288 | 16,189 | 15,088 | 16,125 | 17,203 | 17,300 | 18,226 | 18,043 | 20,062 | 208,463 |
| | UNMEAS. RETURNS | 68 | 116 | 127 | 259 | 291 | 314 | 210 | 180 | 149 | 60 | 43 | 40 | 1,857 |
| | CONSUMPTIVE USE | 14,685 | 10,878 | 17,780 | 24,603 | 30,516 | 31,121 | 34,025 | 34,192 | 22,937 | 26,198 | 14,929 | 7,790 | 269,654 |
| GROUNDWATER INJECTED STORAGE | 4/ | | | | | | | | | | | | | |
| LAS VEGAS VALLEY WATER DISTRICT | INJECTED | 5,045 | 0 | 0 | 0 | 0 | 0 | 0 | 0 | 0 | 0 | 0 | 0 | 5,045 |
| | WITHDRAWN | 0 | 0 | 0 | 0 | 0 | 0 | 0 | 17 | 375 | 276 | 130 | 53 | 851 |
| CITY OF NORTH LAS VEGAS | INJECTED | 0 | 0 | 0 | 0 | 0 | 0 | 0 | 0 | 0 | 0 | 0 | 0 | 0 |
| | WITHDRAWN | 0 | 0 | 0 | 0 | 0 | 0 | 0 | 0 | 0 | 0 | 0 | 0 | 0 |

NOTE: The term 'CONSUMPTIVE USE' in this tabulation means diversions including underground pumping, less measured return flow and less current estimated unmeasured return flow to the river.

Footnotes:

1/ Totals may differ from the sum of the monthly values due to rounding to the nearest acre-foot.

2/ Diversions were fully measured and reported by Reclamation.

3/ Estimated return based on historic use method adopted by the task force on unmeasured return flows on August 28, 1984 and revised as noted in the Reclamation letter to SNWA and CRCN dated December 12, 2007.

4/ Nevada Injected Storage Balance:

| | |
|--|---------|
| A/ Beginning-of-Year Cumulative Injected Storage | 346,981 |
| Plus Current Year Additions | 5,045 |
| Minus Current Year Withdrawals | 851 |
| End-of-Year Cumulative Injected Storage | 351,175 |

A/ Colorado River water injected into ground water storage is accounted for as a consumptive use in the year in which it is diverted from the Colorado River. It will not be accounted for as a consumptive use in the year in which it is withdrawn from storage, but because it originated as Colorado River water it will be accounted for as a return flow credit in the year in which it returns to the Colorado River.

**RECORDS OF RELEASES OF MAINSTREAM WATER PURSUANT TO ORDERS
THEREFOR BUT NOT DIVERTED BY PARTY ORDERING THE SAME, AND THE
QUANTITY OF SUCH WATER DELIVERED TO MEXICO IN SATISFACTION OF THE
MEXICAN TREATY OR DIVERTED BY OTHERS; IN ACCORDANCE WITH ARTICLE V(C)
OF THE CONSOLIDATED DECREE OF THE UNITED STATES SUPREME COURT IN
*ARIZONA V. CALIFORNIA, 547 U.S. 150 (2006)***

The following tabulations for calendar year 2008 show records of releases of mainstream water pursuant to orders therefor but not diverted by the party ordering the same (rejected water), and the quantity of such water delivered to Mexico in satisfaction of the Mexican Treaty or diverted by others in satisfaction of decreed rights. In addition to the requirements of the Decree, Reclamation tabulated quantities of such rejected water passing to Mexico in excess of treaty requirements and quantities captured in storage in federally operated facilities.

Water ordered but not diverted was computed daily for each diverter as the difference between the approved daily order and the mean daily delivery on the day the diversion was made. The monthly quantities shown on the tabulations are the sum of the daily quantities. Daily orders are provided to Reclamation in advance of the delivery date by the amount of time required for water to travel between the storage location and the user's point of diversion from the mainstream. To the extent possible, water ordered but not diverted was delivered to others in satisfaction of their rights. Any remaining water ordered but not diverted was apportioned between delivery to storage, delivery to Mexico in satisfaction of treaty requirements and finally, to Mexico in excess of treaty requirements.

The water users included in this tabulation are the major water users from which Reclamation receives a daily water order, and with the exception of CAP and MWD, are those which divert their water downstream of Parker Dam. Currently, no daily orders are received from Nevada for diversion from the Colorado River therefore no sheet is included for Nevada. In addition, the storage capacity of Lake Mead is large enough in relation to the present daily diversions from the reservoir by Nevada that any water ordered but not diverted would be retained for future use and would not pass to Mexico in excess of treaty requirements.

Should the reader compare the sum of the water ordered but not diverted, which is delivered to Mexico in excess of treaty requirements tabulated below to the figure presented in the next section of this report, Article V (D), they will find that the totals do not match. This is a result of differences in the data provided to Reclamation and the method for summing the information. In this section, Reclamation sums the amount of water calculated to have been delivered to Mexico in excess of treaty requirements only. In the following section, the excess delivery data is supplied by IBWC and represents the sum of daily deliveries in excess of treaty requirements and daily under deliveries to Mexico.

RELEASE OF MAINSTREAM WATER PURSUANT TO ORDERS
BUT NOT DIVERTED BY PARTY ORDERING SAME AND
QUANTITY OF SUCH WATER DELIVERED TO MEXICO IN SATISFACTION OF MEXICAN TREATY OR DIVERTED BY OTHERS
CALENDAR YEAR 2008
STATE OF ARIZONA

| WATER USER | 08/01/09 | (ACRE-FEET) | | | | | | | | | | | | TOTAL | |
|---|----------|-------------|-------|-------|-------|-------|-------|-------|-------|-------|-------|-------|-------|--------|--|
| | Ftns | JAN | FEB | MAR | APR | MAY | JUN | JUL | AUG | SEP | OCT | NOV | DEC | | |
| CENTRAL ARIZONA PROJECT, DIVERSION AT LAKE HAVASU | | | | | | | | | | | | | | | |
| ORDERED BUT NOT DIVERTED | | 888 | 1,967 | 3,882 | 2,885 | 3,011 | 756 | 1,209 | 2,855 | 1,315 | 3,902 | 1,502 | 538 | 24,710 | |
| DELIVERED TO MEXICO IN SATISFACTION OF TREATY | | | | | | | | | | | | | | | |
| DIVERTED BY OTHERS | | | | | | | | | | | | | | | |
| DELIVERED TO STORAGE | 1/ | 888 | 1,967 | 3,882 | 2,885 | 3,011 | 756 | 1,209 | 2,855 | 1,315 | 3,902 | 1,502 | 538 | 24,710 | |
| DELIVERED TO MEXICO IN EXCESS OF TREATY | | 0 | 0 | 0 | 0 | 0 | 0 | 0 | 0 | 0 | 0 | 0 | 0 | 0 | |
| CR INDIAN RESERVATION, DIVERSION AT HEADGATE ROCK | | | | | | | | | | | | | | | |
| ORDERED BUT NOT DIVERTED | | 3,090 | 1,420 | 3,572 | 2,755 | 3,130 | 3,017 | 1,102 | 3,497 | 3,271 | 2,884 | 3,342 | 1,355 | 32,435 | |
| DELIVERED TO MEXICO IN SATISFACTION OF TREATY | | 1,554 | 449 | 795 | 294 | 1,410 | 729 | 284 | 992 | 1,189 | 1,388 | 1,205 | 534 | 10,823 | |
| DIVERTED BY OTHERS | | | | | | | | | | | | | | | |
| DELIVERED TO STORAGE | 1/ | 636 | 683 | 2,093 | 1,820 | 971 | 1,942 | 621 | 1,277 | 1,364 | 480 | 1,037 | 492 | 13,416 | |
| DELIVERED TO MEXICO IN EXCESS OF TREATY | | 697 | 243 | 562 | 443 | 567 | 313 | 130 | 513 | 366 | 577 | 650 | 203 | 5,264 | |
| NORTH GILA VALLEY I.D.D., DIVERSION AT IMPERIAL DAM | | | | | | | | | | | | | | | |
| ORDERED BUT NOT DIVERTED | | 707 | 364 | 699 | 656 | 787 | 139 | 657 | 1,067 | 502 | 622 | 1,267 | 2,923 | 10,390 | |
| DELIVERED TO MEXICO IN SATISFACTION OF TREATY | | 253 | 144 | 255 | 103 | 390 | 22 | 254 | 393 | 189 | 382 | 491 | 923 | 3,799 | |
| DIVERTED BY OTHERS | | | | | | | | | | | | | | | |
| DELIVERED TO STORAGE | 1/ | 145 | 117 | 317 | 359 | 209 | 84 | 308 | 370 | 222 | 78 | 325 | 1,000 | 3,534 | |
| DELIVERED TO MEXICO IN EXCESS OF TREATY | | 110 | 83 | 106 | 147 | 124 | 33 | 80 | 170 | 70 | 84 | 174 | 415 | 1,596 | |
| GILA MONSTER FARMS, GILA PROJECT DISTRICTS | | | | | | | | | | | | | | | |
| DIVERSION AT IMPERIAL DAM | 1/ | | | | | | | | | | | | | | |
| ORDERED BUT NOT DIVERTED | | 1,103 | 914 | 990 | 862 | 632 | 557 | 607 | 603 | 884 | 393 | 540 | 884 | 8,969 | |
| DELIVERED TO MEXICO IN SATISFACTION OF TREATY | | 523 | 358 | 311 | 128 | 217 | 170 | 218 | 210 | 319 | 216 | 184 | 222 | 3,076 | |
| DIVERTED BY OTHERS | | | | | | | | | | | | | | | |
| DELIVERED TO STORAGE | 1/ | 215 | 380 | 493 | 539 | 275 | 329 | 297 | 151 | 365 | 76 | 180 | 392 | 3,692 | |
| DELIVERED TO MEXICO IN EXCESS OF TREATY | | 176 | 153 | 155 | 123 | 110 | 52 | 57 | 137 | 140 | 49 | 94 | 121 | 1,367 | |
| WELLTON-MOHAWK I.D.D., DIVERSION AT IMPERIAL DAM | | | | | | | | | | | | | | | |
| ORDERED BUT NOT DIVERTED | | 9,034 | 5,139 | 714 | 2,473 | 8,299 | 3,318 | 8,269 | 9,096 | 8,234 | 6,880 | 7,779 | 9,060 | 78,295 | |
| DELIVERED TO MEXICO IN SATISFACTION OF TREATY | | 5,264 | 2,913 | 413 | 501 | 3,909 | 893 | 2,730 | 2,754 | 3,563 | 2,929 | 2,824 | 3,483 | 32,176 | |
| DIVERTED BY OTHERS | | | | | | | | | | | | | | | |
| DELIVERED TO STORAGE | 1/ | 1,392 | 929 | 180 | 1,377 | 1,861 | 1,639 | 3,972 | 2,033 | 1,945 | 1,234 | 1,737 | 2,227 | 20,526 | |
| DELIVERED TO MEXICO IN EXCESS OF TREATY | | 1,187 | 1,135 | 68 | 440 | 1,836 | 727 | 945 | 1,522 | 591 | 1,426 | 1,082 | 1,393 | 12,352 | |
| YUMA IRRIGATION DISTRICT, DIVERSION AT IMPERIAL DAM | | | | | | | | | | | | | | | |
| ORDERED BUT NOT DIVERTED | | 1,601 | 434 | 115 | 199 | 929 | 325 | 405 | 872 | 1,105 | 794 | 1,747 | 3,418 | 11,944 | |
| DELIVERED TO MEXICO IN SATISFACTION OF TREATY | | 754 | 244 | 0 | 39 | 348 | 92 | 180 | 302 | 500 | 363 | 647 | 1,083 | 4,552 | |
| DIVERTED BY OTHERS | | | | | | | | | | | | | | | |
| DELIVERED TO STORAGE | 1/ | 228 | 103 | 53 | 73 | 178 | 178 | 194 | 186 | 223 | 122 | 248 | 1,174 | 2,960 | |
| DELIVERED TO MEXICO IN EXCESS OF TREATY | | 217 | 62 | 61 | 80 | 309 | 53 | 18 | 200 | 148 | 131 | 270 | 529 | 2,078 | |
| YUMA MESA I.D.D., DIVERSION AT IMPERIAL DAM | | | | | | | | | | | | | | | |
| ORDERED BUT NOT DIVERTED | | 8,668 | 3,913 | 2,997 | 1,408 | 3,043 | 1,567 | 1,483 | 2,109 | 5,814 | 6,433 | 5,193 | 6,525 | 49,153 | |
| DELIVERED TO MEXICO IN SATISFACTION OF TREATY | | 4,855 | 1,455 | 1,173 | 247 | 1,493 | 647 | 512 | 511 | 2,544 | 3,088 | 1,864 | 2,260 | 20,649 | |
| DIVERTED BY OTHERS | | | | | | | | | | | | | | | |
| DELIVERED TO STORAGE | 1/ | 1,136 | 1,888 | 1,385 | 818 | 787 | 835 | 768 | 691 | 1,986 | 1,288 | 1,723 | 1,410 | 14,715 | |
| DELIVERED TO MEXICO IN EXCESS OF TREATY | | 1,160 | 541 | 312 | 304 | 607 | 73 | 179 | 183 | 894 | 1,034 | 684 | 745 | 6,716 | |
| | | 1,517 | 29 | 127 | 39 | 156 | 12 | 24 | 724 | 390 | 1,023 | 922 | 2,110 | 7,073 | |

RELEASE OF MAINSTREAM WATER PURSUANT TO ORDERS
 BUT NOT DIVERTED BY PARTY ORDERING SAME AND
 QUANTITY OF SUCH WATER DELIVERED TO MEXICO IN SATISFACTION OF MEXICAN TREATY OR DIVERTED BY OTHERS
 CALENDAR YEAR 2008
 STATE OF ARIZONA

| WATER USER | 08/01/09 | (ACRE-FEET) | | | | | | | | | | | | TOTAL |
|---|----------|-------------|--------|--------|--------|--------|--------|--------|--------|--------|--------|--------|--------|---------|
| | Ftnts | JAN | FEB | MAR | APR | MAY | JUN | JUL | AUG | SEP | OCT | NOV | DEC | |
| UNIT "B" I.D.D., DIVERSION AT IMPERIAL DAM | | | | | | | | | | | | | | |
| ORDERED BUT NOT DIVERTED | | 596 | 379 | 356 | 527 | 829 | 640 | 642 | 538 | 936 | 1,089 | 1,088 | 437 | 8,057 |
| DELIVERED TO MEXICO IN | | 294 | 181 | 93 | 88 | 353 | 292 | 277 | 167 | 524 | 628 | 382 | 91 | 3,370 |
| SATISFACTION OF TREATY | | | | | | | | | | | | | | |
| DIVERTED BY OTHERS | | 62 | 157 | 220 | 353 | 274 | 315 | 234 | 131 | 186 | 168 | 361 | 86 | 2,547 |
| DELIVERED TO STORAGE | 1/ | 86 | 35 | 34 | 56 | 160 | 24 | 78 | 118 | 160 | 171 | 137 | 87 | 1,146 |
| DELIVERED TO MEXICO IN | | | | | | | | | | | | | | |
| EXCESS OF TREATY | | 154 | 6 | 9 | 30 | 42 | 9 | 53 | 122 | 66 | 122 | 208 | 173 | 994 |
| YUMA COUNTY WATER USERS' ASSN., DIVERSION AT IMPERIAL DAM | | | | | | | | | | | | | | |
| ORDERED BUT NOT DIVERTED | | 6,946 | 4,750 | 3,297 | 497 | 8,028 | 7,540 | 5,192 | 4,945 | 5,870 | 7,304 | 8,793 | 11,657 | 74,819 |
| DELIVERED TO MEXICO IN | | 3,453 | 1,420 | 1,225 | 79 | 3,838 | 1,952 | 1,098 | 695 | 2,412 | 3,034 | 3,588 | 4,687 | 27,481 |
| SATISFACTION OF TREATY | | | | | | | | | | | | | | |
| DIVERTED BY OTHERS | | 1,064 | 2,375 | 1,395 | 306 | 1,780 | 4,678 | 3,203 | 1,726 | 1,819 | 1,296 | 1,557 | 2,555 | 23,754 |
| DELIVERED TO STORAGE | 1/ | 986 | 812 | 579 | 60 | 2,067 | 801 | 544 | 742 | 1,140 | 1,450 | 1,360 | 1,602 | 12,143 |
| DELIVERED TO MEXICO IN | | | | | | | | | | | | | | |
| EXCESS OF TREATY | | 1,443 | 143 | 98 | 52 | 343 | 109 | 347 | 1,782 | 499 | 1,524 | 2,288 | 2,813 | 11,441 |
| ARIZONA TOTALS | | | | | | | | | | | | | | |
| ORDERED BUT NOT DIVERTED | | 32,633 | 19,280 | 16,622 | 12,262 | 28,688 | 17,859 | 19,566 | 25,582 | 27,931 | 30,301 | 31,251 | 36,797 | 298,772 |
| DELIVERED TO MEXICO IN | | 16,950 | 7,164 | 4,265 | 1,479 | 11,958 | 4,797 | 5,553 | 6,024 | 11,240 | 12,028 | 11,185 | 13,283 | 105,926 |
| SATISFACTION OF TREATY | | | | | | | | | | | | | | |
| DIVERTED BY OTHERS | | 4,878 | 6,632 | 6,136 | 5,645 | 6,335 | 10,000 | 9,597 | 6,565 | 8,110 | 4,742 | 7,168 | 9,336 | 85,144 |
| DELIVERED TO STORAGE | 1/ | 5,507 | 5,031 | 5,759 | 4,538 | 8,791 | 2,832 | 3,240 | 6,440 | 4,824 | 8,824 | 5,953 | 5,633 | 67,372 |
| DELIVERED TO MEXICO IN | | | | | | | | | | | | | | |
| EXCESS OF TREATY | | 5,298 | 453 | 462 | 600 | 1,604 | 230 | 1,176 | 6,553 | 3,757 | 4,707 | 6,945 | 8,545 | 40,330 |

Footnotes:

1/ Available for future use.

RELEASE OF MAINSTREAM WATER PURSUANT TO ORDERS
 BUT NOT DIVERTED BY PARTY ORDERING SAME AND
 QUANTITY OF SUCH WATER DELIVERED TO MEXICO IN SATISFACTION OF MEXICAN TREATY OR DIVERTED BY OTHERS
 CALENDAR YEAR 2008
 STATE OF CALIFORNIA

| WATER USER | 08/01/09 | (ACRE-FEET) | | | | | | | | | | | | TOTAL |
|--|----------|-------------|--------|--------|--------|--------|--------|--------|--------|--------|--------|--------|--------|---------|
| | Ftns | JAN | FEB | MAR | APR | MAY | JUN | JUL | AUG | SEP | OCT | NOV | DEC | |
| METROPOLITAN WATER DISTRICT, DIVERSION AT LAKE HAVASU | | | | | | | | | | | | | | |
| ORDERED BUT NOT DIVERTED | | 4,170 | 4,158 | 3,460 | 4,871 | 7,919 | 3,386 | 1,113 | 534 | 3,784 | 3,796 | 2,279 | 4,016 | 43,486 |
| DELIVERED TO MEXICO IN SATISFACTION OF TREATY | | | | | | | | | | | | | | |
| DIVERTED BY OTHERS | | | | | | | | | | | | | | |
| DELIVERED TO STORAGE | 1/ | 4,170 | 4,158 | 3,460 | 4,871 | 7,919 | 3,386 | 1,113 | 534 | 3,784 | 3,796 | 2,279 | 4,016 | 43,486 |
| DELIVERED TO MEXICO IN EXCESS OF TREATY | | 0 | 0 | 0 | 0 | 0 | 0 | 0 | 0 | 0 | 0 | 0 | 0 | 0 |
| PALO VERDE IRRIGATION DISTRICT, DIVERSION AT PALO VERDE DAM | | | | | | | | | | | | | | |
| ORDERED BUT NOT DIVERTED | | 1,156 | 298 | 877 | 615 | 237 | 1,547 | 2,519 | 1,111 | 952 | 995 | 847 | 756 | 11,910 |
| DELIVERED TO MEXICO IN SATISFACTION OF TREATY | | 641 | 25 | 426 | 193 | 116 | 628 | 792 | 307 | 444 | 735 | 538 | 123 | 4,968 |
| DIVERTED BY OTHERS | | | | | | | | | | | | | | |
| DELIVERED TO STORAGE | 1/ | 146 | 193 | 261 | 231 | 69 | 794 | 1,374 | 435 | 225 | 123 | 146 | 440 | 4,437 |
| DELIVERED TO MEXICO IN EXCESS OF TREATY | | 260 | 79 | 157 | 165 | 25 | 117 | 343 | 291 | 177 | 37 | 88 | 97 | 1,836 |
| | | 109 | 1 | 33 | 26 | 27 | 8 | 10 | 78 | 106 | 100 | 75 | 96 | 669 |
| YUMA PROJECT RESERVATION DIVISION, DIVERSION AT IMPERIAL DAM | | | | | | | | | | | | | | |
| ORDERED BUT NOT DIVERTED | | 5,111 | 3,357 | 2,040 | 1,811 | 3,092 | 3,076 | 2,490 | 2,037 | 3,200 | 2,273 | 4,877 | 5,080 | 38,444 |
| DELIVERED TO MEXICO IN SATISFACTION OF TREATY | | 2,644 | 1,202 | 371 | 423 | 1,527 | 705 | 896 | 547 | 1,124 | 1,486 | 1,820 | 1,584 | 14,329 |
| DIVERTED BY OTHERS | | | | | | | | | | | | | | |
| DELIVERED TO STORAGE | 1/ | 870 | 1,435 | 1,073 | 965 | 605 | 2,034 | 1,154 | 579 | 1,222 | 221 | 1,410 | 1,837 | 13,405 |
| DELIVERED TO MEXICO IN EXCESS OF TREATY | | 776 | 642 | 551 | 371 | 723 | 303 | 336 | 525 | 431 | 271 | 726 | 820 | 6,475 |
| | | 821 | 78 | 45 | 52 | 237 | 34 | 104 | 386 | 423 | 295 | 921 | 839 | 4,235 |
| IMPERIAL IRRIGATION DISTRICT, DIVERSION AT IMPERIAL DAM | | | | | | | | | | | | | | |
| ORDERED BUT NOT DIVERTED | | 18,200 | 4,586 | 19,749 | 10,746 | 9,432 | 2,753 | 4,924 | 11,853 | 16,086 | 22,203 | 12,506 | 21,499 | 154,537 |
| DELIVERED TO MEXICO IN SATISFACTION OF TREATY | | 9,122 | 2,617 | 5,692 | 2,363 | 4,156 | 1,476 | 3,516 | 4,704 | 9,343 | 11,614 | 6,373 | 5,835 | 66,811 |
| DIVERTED BY OTHERS | | | | | | | | | | | | | | |
| DELIVERED TO STORAGE | 1/ | 1,448 | 1,008 | 7,933 | 4,810 | 2,504 | 821 | 762 | 2,098 | 1,190 | 3,300 | 1,291 | 3,686 | 30,851 |
| DELIVERED TO MEXICO IN EXCESS OF TREATY | | 2,474 | 707 | 5,464 | 2,887 | 2,386 | 423 | 269 | 3,372 | 850 | 2,610 | 2,024 | 3,541 | 27,007 |
| | | 5,156 | 254 | 660 | 686 | 386 | 33 | 377 | 1,679 | 4,703 | 4,679 | 2,818 | 8,437 | 29,868 |
| COACHELLA VALLEY WATER DISTRICT, DIVERSION AT IMPERIAL DAM | | | | | | | | | | | | | | |
| ORDERED BUT NOT DIVERTED | | 3,477 | 1,699 | 2,215 | 1,667 | 2,653 | 2,121 | 5,686 | 4,323 | 3,399 | 1,348 | 3,742 | 5,904 | 38,234 |
| DELIVERED TO MEXICO IN SATISFACTION OF TREATY | | 1,697 | 940 | 710 | 218 | 675 | 459 | 2,278 | 830 | 1,312 | 530 | 1,291 | 1,163 | 12,103 |
| DIVERTED BY OTHERS | | | | | | | | | | | | | | |
| DELIVERED TO STORAGE | 1/ | 433 | 421 | 1,000 | 1,116 | 922 | 1,125 | 3,058 | 2,342 | 1,629 | 417 | 654 | 1,901 | 15,018 |
| DELIVERED TO MEXICO IN EXCESS OF TREATY | | 518 | 272 | 432 | 202 | 924 | 523 | 185 | 560 | 214 | 62 | 508 | 929 | 5,329 |
| | | 829 | 66 | 73 | 131 | 132 | 14 | 165 | 591 | 244 | 339 | 1,289 | 1,911 | 5,784 |
| CALIFORNIA TOTALS | | | | | | | | | | | | | | |
| ORDERED BUT NOT DIVERTED | | 32,114 | 14,098 | 28,341 | 19,710 | 23,333 | 12,883 | 16,732 | 19,858 | 27,421 | 30,615 | 24,251 | 37,255 | 286,611 |
| DELIVERED TO MEXICO IN SATISFACTION OF TREATY | | 14,104 | 4,784 | 7,199 | 3,197 | 6,474 | 3,268 | 7,482 | 6,388 | 12,223 | 14,365 | 10,022 | 8,705 | 98,211 |
| DIVERTED BY OTHERS | | | | | | | | | | | | | | |
| DELIVERED TO STORAGE | 1/ | 2,897 | 3,057 | 10,267 | 7,122 | 4,100 | 4,774 | 6,348 | 5,454 | 4,266 | 4,061 | 3,501 | 7,864 | 63,711 |
| DELIVERED TO MEXICO IN EXCESS OF TREATY | | 8,198 | 5,858 | 10,064 | 8,496 | 11,977 | 4,752 | 2,246 | 5,282 | 5,456 | 6,776 | 5,625 | 9,403 | 84,133 |
| | | 6,915 | 399 | 811 | 895 | 782 | 89 | 656 | 2,734 | 5,476 | 5,413 | 5,103 | 11,283 | 40,556 |

Footnotes:
 1/ Available for future use.

**RECORDS OF DELIVERIES TO MEXICO OF WATER
IN SATISFACTION OF THE TREATY OF FEBRUARY 3, 1944 AND WATER
PASSING TO MEXICO IN EXCESS OF TREATY REQUIREMENTS IN ACCORDANCE WITH
ARTICLE V (D) OF THE CONSOLIDATED DECREE OF THE UNITED STATES
SUPREME COURT IN *ARIZONA V. CALIFORNIA*, 547 U.S. 150 (2006)**

| | | CALENDAR YEAR 2008 | | | | | | | | | | | | |
|---|-------|--------------------|-------------|---------|---------|---------|---------|---------|---------|--------|--------|---------|---------|-----------|
| | | 8/1/09 | (ACRE-FEET) | | | | | | | | | | | |
| WATER USER | Ftnts | JAN | FEB | MAR | APR | MAY | JUN | JUL | AUG | SEP | OCT | NOV | DEC | TOTAL |
| DELIVERY AT NIB | 1/ | 119,679 | 141,982 | 193,619 | 194,235 | 99,772 | 103,296 | 109,782 | 98,098 | 89,161 | 69,464 | 103,373 | 125,311 | 1,447,772 |
| DELIVERY AT THE LIMITROPHE | 2/ | 644 | 821 | 639 | 357 | 728 | 406 | 398 | 379 | 890 | 673 | 938 | 667 | 7,540 |
| DELIVERY FOR TIJUANA | 3/ | 0 | 403 | 931 | 682 | 696 | 686 | 0 | 0 | 700 | 682 | 0 | 702 | 5,482 |
| DELIVERY AT SIB | | 11,471 | 11,322 | 9,515 | 6,603 | 12,058 | 11,197 | 11,460 | 10,051 | 8,425 | 12,870 | 13,259 | 12,150 | 130,381 |
| DIVERSION CHANNEL DISCHARGED TO RIVER | 4/ | 0 | 20 | 0 | 53 | 62 | 0 | 12 | 57 | 0 | 0 | 0 | 0 | 204 |
| TOTAL DELIVERY TO MEXICO | 5/ | 131,794 | 154,548 | 204,704 | 201,930 | 113,316 | 115,585 | 121,652 | 108,585 | 99,176 | 83,689 | 117,570 | 138,830 | 1,591,379 |
| TO MEXICO IN SATISFACTION OF TREATY | | 119,428 | 154,380 | 204,112 | 198,669 | 110,741 | 115,575 | 119,428 | 93,370 | 89,307 | 73,739 | 102,966 | 118,285 | 1,500,000 |
| TO MEXICO IN EXCESS OF TREATY | 6/ | 12,366 | 168 | 592 | 3,261 | 2,575 | 10 | 2,224 | 15,215 | 9,869 | 9,950 | 14,604 | 20,545 | 91,379 |
| WATER BYPASSED PURSUANT TO MINUTE 242 OF THE IBWC | | 10,178 | 9,452 | 9,932 | 9,619 | 9,991 | 9,729 | 7,427 | 6,927 | 10,128 | 10,370 | 10,607 | 11,074 | 115,434 |

Footnotes:

1/ Flow in the river at the Northerly International Boundary.

2/ Wasteway deliveries to the river limitrophe via the Cooper, 11 mile, and 21 mile lateral wasteways in satisfaction of the 1944 Treaty requirements.

3/ Temporary emergency delivery of Colorado River water for Tijuana is diverted at Lake Havasu by MWD and delivered via the Colorado River Aqueduct, MWD, SDCWA, and Otay Water District's distribution systems pursuant to Minutes No. 310 and 314 of the IBWC.

4/ Diversion channel delivers water from the SIB confluence structure to the river or the Bypass. During the months shown the flow is charged to the Treaty.

5/ This does not include Water Bypassed Pursuant to Minute No. 242 of the IBWC.

6/ Water passing to Mexico in excess of Mexico's daily schedule. Sum of daily differences between actual flows to Mexico and Mexico's total schedule.

**RECORDS OF DIVERSIONS OF WATER FROM THE
 MAINSTREAM OF THE GILA AND SAN FRANCISCO RIVERS
 AND THE CONSUMPTIVE USE OF SUCH WATER, FOR THE BENEFIT
 OF THE GILA NATIONAL FOREST IN ACCORDANCE WITH
 ARTICLE V (E) OF THE CONSOLIDATED DECREE OF THE UNITED STATES
 SUPREME COURT IN *ARIZONA V. CALIFORNIA*, 547 U.S. 150 (2006)**

| | | CALENDAR YEAR 2008 | | | | | | | | | | | | |
|---------------------|-----------------|--------------------|-----|-----|-----|-----|-----|-----|-----|-----|-----|-----|-----|-------|
| | | (ACRE-FEET) | | | | | | | | | | | | |
| 8/1/09 | | JAN | FEB | MAR | APR | MAY | JUN | JUL | AUG | SEP | OCT | NOV | DEC | TOTAL |
| WATER USER | | | | | | | | | | | | | | |
| GILA RIVER | DIVERSION | 0 | 0 | 0 | 0 | 0 | 0 | 0 | 0 | 0 | 0 | 0 | 0 | 0 |
| | CONSUMPTIVE USE | 0 | 0 | 0 | 0 | 0 | 0 | 0 | 0 | 0 | 0 | 0 | 0 | 0 |
| SAN FRANCISCO RIVER | DIVERSION | 0 | 0 | 0 | 0 | 0 | 0 | 0 | 0 | 0 | 0 | 0 | 0 | 0 |
| | CONSUMPTIVE USE | 0 | 0 | 0 | 0 | 0 | 0 | 0 | 0 | 0 | 0 | 0 | 0 | 0 |

INFORMATION SUPPLEMENTAL TO THE REQUIREMENTS OF THE CONSOLIDATED DECREE OF THE UNITED STATES SUPREME COURT IN *ARIZONA V. CALIFORNIA*, 547 U.S. 150 (2006)

The information contained in the following sections of this report is supplemental to the records required by Article V of the Consolidated Decree of the United States Supreme Court in *Arizona v. California*, 547 U.S. 150 (2006). The information tabulated here provides a broader record of activities relating to federal management of the Colorado River in concise reports specific to various agreements or requirements and it is intended to help the reader correlate the records of diversions and consumptive uses with the various conservation, transfer and exchange agreements. The final section contains documents significant to the actions taken by Reclamation, the Lower Division States, and the water user agencies.

INTERSTATE BANKING WITHIN THE STATES OF ARIZONA, CALIFORNIA, AND NEVADA

Reclamation developed and implemented a rule that establishes the procedural framework for carrying out an interstate water banking program. The rule is codified in 43 CFR, Part 414. Authorized parties may enter into agreements whereby Colorado River water may be stored off stream in one state for future benefit of consuming entities in another state.

Reclamation, on behalf of the Secretary of the Interior (Secretary), executed a Storage and Interstate Release Agreement (SIRA) with the Southern Nevada Water Authority (SNWA), the Colorado River Commission of Nevada (CRCN), and the Arizona Water Banking Authority (AWBA). The SIRA provides structure and guidance, in accordance with Article II(B)(6) of the Consolidated Decree in *Arizona v. California*, 547 U.S.150 (2006) (Consolidated Decree), for the actions the Secretary will take in releasing Colorado River water to a specific entity in order to implement the interstate contractual distribution of water under the interstate banking program.

AWBA, SNWA, and CRCN executed an Interstate Water Banking Agreement that specifies the interstate banking relationship among those parties. This agreement establishes the terms and conditions for the off stream storage of Colorado River water in Arizona and the establishment of long-term storage credits for the benefit of SNWA.

Another element of this interstate banking program is an Agreement for Development of Intentionally Created Unused Apportionment (ICUA) between AWBA and Central Arizona Water Conservation District (CAWCD). CAWCD has obligated itself to accept water recovered by pumping groundwater, represented by Long-Term Storage Credits (LTSC). CAWCD reduces its diversion of Colorado River water through the Central Arizona Project by an equivalent amount, reducing Arizona's Colorado River water consumption. This forbearance creates ICUA that is released by the Secretary for use by SNWA.

Reclamation accounts for Colorado River water diverted for storage in Arizona by AWBA, through CAWCD, as a consumptive use in Arizona in

the year Colorado River water is diverted. LTSC's are created for the account of consuming entities in Nevada or California. When LTSC's are recovered, the consuming entities in Nevada or California, pursuant to the SIRA, will divert Colorado River water in exchange for CAWCD's use of the LTSC's. The Secretary will release ICUA created by AWBA through CAWCD's forbearance to the consuming entity in Nevada or California in that same year pursuant to Article II(B)(6) of the Consolidated Decree. ICUA used in Nevada or California is accounted for as consumptive use of Colorado River water that year and is in addition to the basic apportionment of the state where the use occurs.

CRCN, SNWA, The Metropolitan Water District of Southern California (MWD), and the United States entered into a SIRA under which MWD agreed to store Nevada unused basic apportionment pursuant to Article II (B) (6) of the Consolidated Decree. When SNWA calls upon this stored water, MWD will develop ICUA by reducing its diversion of Colorado River water. The ICUA developed by MWD through its reduced diversion of Colorado River water will be released by the Secretary for use by SNWA.

CAWCD stored Colorado River water underground in Arizona under a demonstration project in the early 1990s. CAWCD developed Interstate Underground Storage (IUS) credits. CAWCD assigned IUS credits to SNWA and MWD under the 1992 agreement, as amended between MWD and CAWCD. IUS credits assigned to SNWA were incorporated into the subsequent AWBA, SNWA, CRCN Interstate Water Banking Agreement. Recovery of MWD's credits is subject to the terms of an amended letter agreement dated December 11, 2007.

The following tabulation lists Accumulated Long Term Storage Credits (ALTSC) verified by AWBA, provisional LTSC accrued during the past year, Long Term Storage Credits recovered during the past year, ALTSC held for an entity with a SIRA, and credits assigned to MWD by CAWCD.

INTERSTATE BANKING
 COLORADO RIVER WATER STORED IN ONE STATE UNDER 43 CFR PART 414
 FOR THE BENEFIT OF SPECIFIC ENTITIES IN ANOTHER STATE
 CALENDAR YEAR 2008

8/1/09

(ACRE-FEET)

| | | Ftns | JAN | FEB | MAR | APR | MAY | JUN | JUL | AUG | SEP | OCT | NOV | DEC | TOTALS |
|---|----------------------|---------|---------|---------|---------|---------|---------|---------|---------|---------|---------|---------|---------|---------|---------|
| NEVADA | Verified BOY ALTSC | 1/ | 527,520 | | | | | | | | | | | | |
| Water diverted and stored in Arizona for the benefit of SNWA. | Accrued LTSC in 08 | 2/ | 0 | 0 | 0 | 0 | 0 | 0 | 0 | 0 | 0 | 0 | 0 | 0 | 0 |
| | Verified LTSC in 08 | 3/ | 0 | 0 | 0 | 0 | 0 | 0 | 0 | 0 | 0 | 0 | 0 | 0 | 0 |
| | ICUA Developed in 08 | 4/ | 0 | 0 | 0 | 0 | 0 | 0 | 0 | 0 | 0 | 0 | 0 | 0 | 0 |
| | Total ALTSC | 5/ | 527,520 | 527,520 | 527,520 | 527,520 | 527,520 | 527,520 | 527,520 | 527,520 | 527,520 | 527,520 | 527,520 | 527,520 | 527,520 |
| Water diverted and stored by MWD for the benefit of SNWA. | Verified BOY ALTSC | 1/6/ | 25,000 | | | | | | | | | | | | |
| | Accrued LTSC in 08 | 6/ | 0 | 0 | 0 | 0 | 0 | 15,000 | 0 | 0 | 0 | 0 | 0 | 30,000 | 45,000 |
| | Verified LTSC in 08 | | 0 | 0 | 0 | 0 | 0 | 15,000 | 0 | 0 | 0 | 0 | 0 | 30,000 | 45,000 |
| | ICUA Developed in 08 | 4/6/ | 0 | 0 | 0 | 0 | 0 | 0 | 0 | 0 | 0 | 0 | 0 | 0 | 0 |
| Total ALTSC | 6/ | 25,000 | 25,000 | 25,000 | 25,000 | 25,000 | 40,000 | 40,000 | 40,000 | 40,000 | 40,000 | 40,000 | 70,000 | 70,000 | |
| AMOUNT OF WATER STORED FOR THE BENEFIT OF NEVADA - CURRENT YEAR | | | 0 | 0 | 0 | 0 | 0 | 15,000 | 0 | 0 | 0 | 0 | 0 | 30,000 | 45,000 |
| CUMULATIVE BALANCE OF WATER STORED FOR NEVADA WITHIN AZ AND CA | 7/ | 552,520 | 552,520 | 552,520 | 552,520 | 552,520 | 587,520 | 587,520 | 587,520 | 587,520 | 587,520 | 587,520 | 587,520 | 597,520 | 597,520 |
| CALIFORNIA | Verified BOY ALTSC | 8/ | 64,105 | | | | | | | | | | | | |
| Water diverted and stored in Arizona for the benefit of MWD. | Accrued LTSC in 08 | 2/ | 0 | 0 | 0 | 0 | 0 | 0 | 0 | 0 | 0 | 0 | 0 | 0 | 0 |
| | Verified LTSC in 08 | 3/ | 0 | 0 | 0 | 0 | 0 | 0 | 0 | 0 | 0 | 0 | 0 | 0 | 0 |
| | ICUA Developed in 08 | 4/ | 720 | 894 | 2,041 | 2,352 | 2,347 | 2,350 | 2,608 | 3,207 | 3,690 | 3,036 | 1,951 | 3,246 | 28,442 |
| | Total ALTSC | 5/8/ | 63,385 | 62,491 | 60,450 | 58,098 | 55,751 | 53,401 | 50,793 | 47,586 | 43,896 | 40,860 | 38,909 | 35,663 | 35,663 |
| STATES TOTAL | Verified BOY ALTSC | 1/ | 618,625 | | | | | | | | | | | | |
| Water stored in AZ & CA for the benefit of Nevada and California Parties. | Accrued LTSC in 08 | 2/ | 0 | 0 | 0 | 0 | 0 | 15,000 | 0 | 0 | 0 | 0 | 0 | 30,000 | 45,000 |
| | Verified LTSC in 08 | 3/ | 0 | 0 | 0 | 0 | 0 | 15,000 | 0 | 0 | 0 | 0 | 0 | 30,000 | 45,000 |
| | ICUA Developed in 08 | 4/ | 720 | 894 | 2,041 | 2,352 | 2,347 | 2,350 | 2,608 | 3,207 | 3,690 | 3,036 | 1,951 | 3,246 | 28,442 |
| | Total ALTSC | 5/ | 615,905 | 615,011 | 612,970 | 610,818 | 608,271 | 620,921 | 618,313 | 615,106 | 611,416 | 608,380 | 606,429 | 633,183 | 633,183 |

Footnotes:

- 1/ Accumulated Long-term Storage Credits verified by the banking entity before the beginning of the reporting year. Available for recovery by a specific entity with a valid SIRA. Requested Intentionally Created Unused Apportionment cannot exceed verified LTSC.
- 2/ Provisional LTSC accrued during the reporting year for the benefit of a specific consuming entity in Nevada or California with a valid SIRA. Provisional LTSC represent the amount of water diverted from the river and transported to the storage facility. Provisional LTSC have not been verified by AWBA or MWD and are not eligible for certification and recovery. Accruals of LTSC in Arizona for the benefit of consuming entities in Nevada and California are limited to 200,000 af annually.
- 3/ In 2008 AWBA did not store any water in Arizona for SNWA or MWD.
- 4/ ICUA developed by AWBA or MWD during the reporting year. AWBA or MWD have certified this amount to be available and the Secretary has released it to a specific entity with a valid SIRA. The ALTSC are certified by AWBA or MWD when ICUA is requested, and prior to its release by the Secretary. Total recovery of ALTSC from AWBA can not exceed 100,000 af annually, due to a limitation defined under Arizona state law. When water is released from storage, Arizona or MWD will be required to reduce its consumptive use through the development of ICUA in an amount equal to Nevada's and/or California's requested release. Nevada and/or California will be allowed to utilize the unused apportionment in an amount equal to the ICUA made available.
- 5/ Accumulated Long-term Storage Credits are cumulative monthly sum of verified, or estimated LTSC.
- 6/ In 2004 MWD, SNWA, and the Secretary entered into a SIRA to allow MWD to divert and store water for the benefit of SNWA. When storage occurs, it must be Nevada unused apportionment, which will require Nevada to reduce its consumptive use by an amount equal to the total storage. When water is released from storage, California will be required to reduce its consumptive use through the development of ICUA in an amount equal to Nevada's requested release and Nevada will be allowed to utilize the unused apportionment in an amount equal to the ICUA made available by California.
- 7/ This cumulative balance includes both the BOY ALTSC balance as verified by AWBA and MWD and the verified LTSC placed into storage during the current year.
- 8/ LTSC banked in CAWCD's name that are recoverable by MWD under the CAWCD/MWD agreement of October 15, 1992, as amended by the CAWCD/AWBA/MWD amended letter agreement of December 11, 2007.

INADVERTENT OVERRUNS AND PAYBACKS WITHIN THE STATES OF ARIZONA, CALIFORNIA, AND NEVADA

For various reasons, a user may inadvertently divert or consumptively use Colorado River water in an amount that exceeds the amount lawfully available to the user (inadvertent overrun). Requirements are now established for the repayment of such overruns.

The Colorado River Water Delivery Agreement (CRWDA) was signed October 10, 2003, by the Secretary of the Interior. Beginning in 2004, certain districts within California agreed in the CRWDA to begin paybacks to the Colorado River system according to the payback schedule set forth in Exhibit C of the CRWDA in the aggregate amount of accrued overruns for CY 2001 and 2002. The CRWDA permits advance payback.

Reclamation has also implemented an administrative policy that defines inadvertent overruns, establishes procedures to account for the inadvertent overruns, and sets forth the requirements for payback to the Colorado River system.

The Inadvertent Overrun and Payback Policy (IOPP) became effective January 1, 2004, and applies to inadvertent overruns of Colorado River water within the Lower Division States occurring after that date. The policy is set forth in 69 *Federal Register* 12,201 (2004).

The following tabulation displays two items associated with inadvertent overruns and paybacks:

- 1) Identification of entitlement holders who have inadvertently overrun since January 1, 2008. The amount of the overrun repayments made to the Colorado River system, and the remaining overrun balance in each user's inadvertent overrun account.
- 2) The quantity of paybacks made by California parties under Exhibit C of the CRWDA and the remaining balance in each Exhibit C payback account.

The table titled Exhibit C reproduces Exhibit C from the CRWDA for convenient reference.

OVERRUNS, PAYBACKS, AND OVERRUN ACCOUNT BALANCE ¹
 CALENDAR YEAR 2008
 STATE OF ARIZONA

08/01/09

(ACRE-FEET)

| PARTICIPATING ENTITY | ACTION | SPECIFICS | Ftns | 2008 | APPROVAL | ENTITLEMENT |
|--|-----------------------------|---|------|-------|----------|-------------|
| IOPP Overruns by Individual Water Users | | | | | | |
| GILA MONSTER FARMS | IOPP Overruns by Water User | Calendar Year Diversion | 2 | 7,252 | 8,733 | 9,156 |
| | | Calendar Year Overrun - Div. | 3 | 0 | | |
| | | Calendar Year Overrun - CU | | 0 | | |
| | | BOY Overrun Account Balance - Div. | 4 | 1,328 | | |
| | | Validated Calendar Year Paybacks - Div. | 5 | 423 | | |
| | | EOY Overrun Account Balance - Div. | 6 | 905 | | |
| | | Account Balance as Percent of Entitlement | | 9.9% | | |

Footnotes:

- 1/ This section contains tabulations of water use overruns of approved diversions or approved consumptive use amounts in accordance with the Inadvertent Overrun and Payback Policy.
- 2/ The water user's actual diversion or consumptive use as tabulated in the Article V (B) section of this report.
- 3/ The amount of overrun accrued during the current year as determined by comparing the user's approved schedule against the water user's actual diversion or use.
- 4/ The IOPP overrun account balance from the previous year, providing the user had a carry over balance.
- 5/ Paybacks to the Colorado River system made during the current year, from conservation or application of ICS credits.
- 6/ The remainder of the IOPP overrun account balance as of the end of the accounting year.

OVERRUNS, PAYBACKS, OVERRUN ACCOUNT BALANCE, AND CRWDA EXHIBIT C PAYBACK ¹
 CALENDAR YEAR 2008
 STATE OF CALIFORNIA

08/01/09

(ACRE-FEET)

| PARTICIPATING ENTITY | ACTION | SPECIFICS | Ftnts | TOTAL | APPROVAL | ENTITLEMENT |
|--|----------------------------------|---|-------|-------------|-----------|-------------|
| IOPP Overruns by Individual Water Users | | | | 2008 | | |
| IMPERIAL IRRIGATION DISTRICT | IOPP Overruns by Water User | Calendar Year CU | 2/10 | 2,825,116 | 2,873,296 | 2,873,296 |
| | | Calendar Year Overrun - CU | 3 | 0 | | |
| | | BOY Overrun Account Balance | 4 | 14,052 | | |
| | | Validated Calendar Year Paybacks | 5 | 16,197 | | |
| | | EOY Overrun Account Balance | 6 | 0 | | |
| | | Account Balance as Percent of Entitlement | | 0.0% | | |
| FORT MOJAVE INDIAN RESERVATION - CA | IOPP Overruns by Water User | Calendar Year Diversion | 2 | 14,917 | 14,613 | 16,720 |
| | | Calendar Year Overrun - Div. | 3 | 304 | | |
| | | Calendar Year Overrun - CU | | 164 | | |
| | | BOY Overrun Account Balance - Div. | 4 | 6,710 | | |
| | | Validated Calendar Year Paybacks - Div. | 5 | 2,107 | | |
| | | Validated Calendar Year Paybacks - CU | | 1,133 | | |
| | | EOY Overrun Account Balance - Div. | 6 | 4,907 | | |
| | | Account Balance as Percent of Entitlement | | 29.3% | | |
| Payback of Exhibit C Obligations | | | | 2008 | | |
| COACHELLA VALLEY WATER DISTRICT | Payback of Exhibit C Obligations | BOY Exhibit C Balance | 7 | 10,740 | | |
| | | Calendar Year Paybacks | 8 | 6,989 | | |
| | | EOY Exhibit C Balance | 9 | 3,751 | | |

Footnotes:

- 1/ This section contains tabulations of water use overruns of approved diversions or approved consumptive use amounts in accordance with the Inadvertent Overrun and Payback Policy.
- 2/ The water user's actual diversion or consumptive use as tabulated in the Article V (B) section of this report.
- 3/ The amount of overrun accrued during the current year as determined by comparing the user's approved schedule against the water user's actual diversion or use.
- 4/ The IOPP overrun account balance from the previous year, providing the user had a carry over balance.
- 5/ Paybacks to the Colorado River system made during the current year, from conservation or application of ICS credits.
 In a letter dated June 25, 2009, Reclamation confirmed that IID conserved 16,218 af for IOPP repayment in 2008 (see Significant Documents). The amount of conservation has been adjusted to 16,197 af based on final records.
- 6/ The remainder of the IOPP overrun account balance as of the end of the accounting year.
- 7/ The beginning-of-year balance of CRWDA, Exhibit C payback obligations. This is equal to the prior year's end-of-year balance.
- 8/ Paybacks of CRWDA, Exhibit C obligations made to the Colorado River system during the current year. The minimum payback schedule is tabulated in Exhibit C of the CRWDA.
- 9/ End-of-year balance of CRWDA, Exhibit C payback obligations, determined by subtracting current year repayments from the beginning-of-year account balance.
- 10/ Construction of the Drop 2 Storage Reservoir, a System Efficiency Intentionally Created Surplus (ICS) project, began in 2008. Given the long-term benefits to the system provided by this project, system water is used for construction purposes. In 2008, IID delivered 181 acre-feet of system water to the Drop 2 Reservoir construction site along the All American Canal. Consequently, IID's 2008 entitlement was adjusted to 2,873,296 acre-feet reflecting the increase of 181af.

OVERRUNS, PAYBACKS, AND OVERRUN ACCOUNT BALANCE ¹
 CALENDAR YEAR 2008
 STATE OF NEVADA

08/01/09

(ACRE-FEET)

| PARTICIPATING ENTITY | ACTION | SPECIFICS | Ftns | TOTAL | APPROVAL | ENTITLEMENT |
|--|-----------------------------|---|------|-------------|----------|-------------|
| IOPP Overruns by Individual Water Users | | | | 2008 | | |
| Southern Nevada Water Authority | IOPP Overruns by Water User | Calendar Year CU | 2 | 269,654 | 264,638 | 264,638 |
| | | Calendar Year Overrun - CU | 3 | 5,016 | | |
| | | BOY Overrun Account Balance | 4 | 312 | | |
| | | Validated Calendar Year Paybacks | 5 | 312 | | |
| | | EOY Overrun Account Balance | 6 | 5,016 | | |
| | | Account Balance as Percent of Entitlement | | 1.9% | | |

Footnotes:

- 1/ This section contains tabulations of water use overruns of approved diversions or approved consumptive use amounts in accordance with the Inadvertent Overrun and Payback Policy.
- 2/ The water user's actual diversion or consumptive use as tabulated in the Article V (B) section of this report.
- 3/ The amount of overrun accrued during the current year as determined by comparing the user's approved schedule against the water user's actual diversion or use.
- 4/ The IOPP overrun account balance from the previous year, providing the user had a carry over balance.
- 5/ Paybacks to the Colorado River system made during the current year, from conservation or application of ICS credits.
- 6/ The remainder of the IOPP overrun account balance as of the end of the accounting year.

Exhibit C of the Colorado River Water Delivery Agreement

Exhibit C: Payback Schedule of Overruns for Calendar Years 2001 and 2002

| <i>Year</i> | <i>IID</i> | <i>CVWD</i> | <i>MWD</i> | <i>Total</i> |
|-------------------|----------------|---------------|---------------|----------------|
| 2004 | 18,900 | 9,100 | 11,000 | 39,000 |
| 2005 | 18,900 | 9,100 | 11,000 | 39,000 |
| 2006 | 18,900 | 9,100 | 11,100 | 39,100 |
| 2007 | 18,900 | 9,100 | 11,100 | 39,100 |
| 2008 | 18,900 | 9,200 | 11,100 | 39,200 |
| 2009 | 18,900 | 9,200 | 11,100 | 39,200 |
| 2010 | 19,000 | 9,200 | 11,100 | 39,300 |
| 2011 | 19,000 | 9,200 | 11,100 | 39,300 |
| Cumulative | 151,400 | 73,200 | 88,600 | 313,200 |

Note: Each district may, at its own discretion, elect to accelerate paybacks to retire its payback obligation before the end of the eight-year period ending in calendar year 2011. Each district's payback obligation is subject to acceleration in anticipation of a shortage in the Lower Colorado River Basin as provided for in section 8(b).

SUMMARY OF WATER AVAILABILITY AND USE BY STATE

The Secretary of the Interior (Secretary) makes Colorado River water available to the Lower Division States in accordance with Article II of the Consolidated Decree of the United States Supreme Court in *Arizona v. California*, 547 U.S. 150 (2006). Under Article II, the Secretary apportions water to the states under shortage, normal, or surplus conditions, and may release water to a state which was apportioned to but unused by another state.

The amount of Colorado River water available for use in a state is impacted by various agreements and policies. Examples of these agreements and policies are the interstate storage and release agreements, and the Inadvertent Overrun and Payback Policy (IOPP).

The following tabulation displays the amount of Colorado River water made available to each Lower Division state under Article II of the Decree, the payback by users within the state of obligations under Exhibit C of the Colorado River Water Delivery Agreement or the IOPP, and the total consumptive use within a state. The table demonstrates whether the consumptive use results in an underrun or overrun of the amount of Colorado River water available to each Lower Division state in 2008.

APPORTIONMENTS, ARTICLE II(B)(6) RELEASES, PAYBACKS, AND TOTAL CONSUMPTIVE USE BY STATE ¹
CALENDAR YEAR 2008

08/01/09

(ACRE-FEET)

| STATE | ADJUSTMENTS | Ftns | ACTUAL USE |
|--|--|------|------------|
| ARIZONA | Basic Apportionment | 2 | 2,800,000 |
| | System Conservation Water Created by YMIDD | | (3,138) |
| | Intentionally Created Unused Apportionment for MWD | | (28,442) |
| | Payback Obligations | 4 | (242) |
| | Total Available Colorado River Water | 5 | 2,768,178 |
| | Total Consumptive Use | 6 | 2,752,497 |
| | State Underrun or (Overrun) | 7 | 15,681 |
| CALIFORNIA | Basic Apportionment | 2 | 4,400,000 |
| | NV II(B)(6) Released to CA for Storage for NV | 3 | 45,000 |
| | Intentionally Created Unused Apportionment for MWD | | 28,442 |
| | Delivery of Intentionally Created Surplus (MWD) | 8 | 46,976 |
| | LCWSP Under pumping (Over pumping) | 9 | 200 |
| | Water for construction of Drop 2 Storage Reservoir | 10 | 181 |
| | Payback of IOPP Overruns | | (15,185) |
| | Payback Obligations (Exhibit C) | 4 | (6,989) |
| | Total Available Colorado River Water | 5 | 4,498,625 |
| | Total Consumptive Use | 6 | 4,498,810 |
| | State Underrun or (Overrun) | 7 | (185) |
| | Overruns by Individual CA Users | | 164 |
| | Unauthorized Agricultural Use | | 21 |
| Net State Underrun or (Overrun) | | 0 | |
| NEVADA | Basic Apportionment | 2 | 300,000 |
| | Intentionally Created Surplus Available | | 9,638 |
| | NV II(B)(6) Available for Storage | 3 | (45,000) |
| | Total Available Colorado River Water | 5 | 264,638 |
| | Total Consumptive Use | 6 | 269,654 |
| | State Underrun or (Overrun) | 7 | (5,016) |
| TOTAL LOWER BASIN UNUSED APPORTIONMENT | | | 15,681 |

Footnotes:

- 1/ This section tabulates increases or reductions to the amount of water available to a state. It also calculates an adjusted state limitation and compares that amount to the consumptive uses within the state. Adjustments include: releases to or from another state under Article II(B)(6) of the Consolidated Decree in *Arizona v. California*, payback obligations of individual water users, intentionally created unused apportionment, surplus, and system conservation.
- 2/ The state basic apportionment as described in Article II(B)(1) of the Consolidated Decree.
- 3/ Nevada unused apportionment made available to Arizona and/or California by the Secretary under Article II(B)(6) of the Consolidated Decree for storage in Arizona or California under the appropriate SIRA.
- 4/ The reduction in the amount of water available to the state due to repayment obligations under the CRWDA or the IOPP.
- 5/ The total amount of Colorado River water available for use in the state.
- 6/ The total consumptive use of Colorado River water within the state as tabulated in the Article V. section of this report.
- 7/ The difference between the Colorado River water available to the state and the state's actual consumptive use.
- 8/ MWD took delivery of 34,000 acre-feet of System Conservation ICS and 12,976 acre-feet of Extraordinary Conservation ICS in 2008.
- 9/ Differences between actual LCWSP wellfield pumping and use of Colorado River water by LCWSP contractors are allowed to be carried over in a given year. In a year when an outstanding LCWSP balance is consumed, LCWSP users are allowed to consumptively use an amount of water greater than the amount pumped by the LCWSP wellfield to offset a previous year(s) overpumpage.
- 10/ Construction of the Drop 2 Storage Reservoir, a System Efficiency Intentionally Created Surplus (ICS) project, began in 2008. Given the long-term benefits to the system provided by this project, system water is used for construction purposes.

LOWER COLORADO WATER SUPPLY PROJECT

The Lower Colorado Water Supply Act, enacted by Congress and approved by the President on November 14, 1986, authorized the Lower Colorado Water Supply Project (Project) as part of a water supply exchange program. Water pumped from the Project well field is exchanged for Colorado River water. This program is intended to help meet the domestic, municipal, industrial, and recreational water needs of water users adjacent to the Colorado River in California. The Project well field will assist those water users whose use of water from the Colorado River is either not covered by a contract or is in excess of their contractual allocation. Although some California water users have access to surplus water, the use of the Project wells is required when surplus water is unavailable or insufficient to meet the needs of the Project beneficiaries in California. Water for agricultural use is not authorized under the Act.

The Lower Colorado Water Supply Act authorizes construction of wells with a total annual capacity of 10,000 acre-feet. Currently, stage I of the Project has been completed and consists of two wells. The well field began operation on August 1, 2003. The wells are located south of the All-American Canal (AAC) in Imperial County. Ground water from the wells is withdrawn and discharged into the AAC and used by the Imperial Irrigation District (IID). IID will then forebear the use of an equal amount of water from the Colorado River. Through a contract with Reclamation, IID is responsible for the operation and maintenance of the well field.

Reclamation entered into a contract to supply Project water to the City of Needles (City) in annual amounts up to 3,500 acre-feet of the initial 8,000 acre-feet available. The contract with the City establishes a framework for the City to enter into subcontracts for delivery of Project water to non-Federal water users in San Bernardino, Riverside, and Imperial Counties. The Colorado River Board of California (CRBC) recommends whether a non-Federal applicant should be offered a subcontract for a Project water supply and notifies Reclamation. Reclamation reviews the information submitted by CRBC and recommends the approved applicants to the City which then offers subcontracts.

The Act, as amended in 2005, authorizes the Secretary of the Interior to contract for the use of Project water under terms that the Secretary determines will benefit the interest of Project users along the Colorado River. On March 26, 2007, Reclamation entered into a contract with the City and The Metropolitan Water District of Southern California (MWD), allowing Stage 1 of the Project to be pumped at capability, without jeopardizing the Project, allowing MWD to receive as much unused water as available. Certain monies received from MWD are being deposited in a Water Quality Maintenance Trust Fund to provide for the long-term viability of the Project or its replacement.

LOWER COLORADO WATER SUPPLY PROJECT
SUMMARY OF USES OFFSET BY PUMPAGE FROM THE LOWER COLORADO WATER SUPPLY PROJECT WELLFIELD
CALENDAR YEAR 2008

08/01/09

(ACRE-FEET)

| | Ftnts | | JAN | FEB | MAR | APR | MAY | JUN | JUL | AUG | SEP | OCT | NOV | DEC | TOTAL |
|--|-------|------------------|-----|-----|-----|-----|-----|-----|-----|-----|-----|-----|-----|-----|-------|
| LCWSP WELLFIELD PUMPAGE | 1/ | Total | 751 | 652 | 700 | 545 | 291 | 535 | 593 | 712 | 736 | 729 | 587 | 519 | 7,350 |
| LCWSP NON-FEDERAL CONTRACTORS | 2/ | | | | | | | | | | | | | | |
| City of Needles (on its own behalf) | | Diversions | 29 | 32 | 39 | 48 | 58 | 62 | 66 | 70 | 55 | 46 | 51 | 126 | 682 |
| | | CU | 17 | 21 | 28 | 31 | 37 | 46 | 49 | 48 | 38 | 32 | 22 | 22 | 391 |
| Needles Subcontractors | | | | | | | | | | | | | | | |
| Havasu Water Company of California | | Diversions | 2 | 3 | 3 | 3 | 4 | 5 | 5 | 5 | 4 | 3 | 3 | 2 | 42 |
| Vista del Lago Resort | | Diversions | 0 | 0 | 1 | 2 | 2 | 2 | 2 | 2 | 2 | 1 | 1 | 0 | 15 |
| Pacific Gas & Electric Company | | Diversions | 12 | 15 | 21 | 22 | 28 | 33 | 36 | 35 | 28 | 23 | 16 | 16 | 285 |
| Southern California Gas Company | | Diversions | 3 | 3 | 5 | 5 | 6 | 8 | 8 | 8 | 6 | 5 | 4 | 4 | 65 |
| Needles Other Subcontractors | | Diversions | 13 | 16 | 22 | 23 | 28 | 35 | 38 | 36 | 28 | 24 | 17 | 16 | 296 |
| | | Total Diversions | 30 | 37 | 52 | 55 | 68 | 83 | 89 | 86 | 68 | 56 | 41 | 38 | 703 |
| | | Meas'd Return | 8 | 10 | 13 | 15 | 19 | 23 | 25 | 24 | 19 | 16 | 11 | 10 | 193 |
| | | Unm'd Return | 6 | 8 | 10 | 11 | 14 | 17 | 18 | 17 | 14 | 11 | 8 | 7 | 141 |
| | | CU | 16 | 19 | 29 | 29 | 35 | 43 | 46 | 45 | 35 | 29 | 22 | 21 | 369 |
| TOTAL NON-FEDERAL USE | 2/ | Total CU | 33 | 40 | 57 | 60 | 72 | 89 | 95 | 93 | 73 | 61 | 44 | 43 | 760 |
| LCWSP PUMPING FOR NON-FEDERAL CONTRACTORS | 3/ | | | | | | | | | | | | | | 760 |
| LCWSP FEDERAL CONTRACTORS | | | | | | | | | | | | | | | |
| BLM | | Diversions | 25 | 19 | 41 | 32 | 53 | 41 | 58 | 50 | 41 | 33 | 26 | 23 | 442 |
| | | Returns | 6 | 4 | 10 | 8 | 13 | 10 | 15 | 12 | 10 | 8 | 7 | 5 | 108 |
| TOTAL BLM USE | 5/ | CU | 19 | 15 | 31 | 24 | 40 | 31 | 43 | 38 | 31 | 25 | 19 | 18 | 334 |
| BALANCE FROM PREVIOUS YEARS - CONSUMED | 4/ | | | | | | | | | | | | | | 200 |
| LCWSP PUMPING FOR BLM | 3/ | | | | | | | | | | | | | | 134 |
| RECLAMATION - Parker Dam and Government Camp | | Diversions | 6 | 6 | 8 | 9 | 10 | 15 | 18 | 20 | 21 | 17 | 14 | 12 | 156 |
| | | Returns | 0 | 0 | 0 | 0 | 0 | 0 | 0 | 0 | 0 | 0 | 0 | 0 | 0 |
| TOTAL RECLAMATION USE | 6/ | CU | 6 | 6 | 8 | 9 | 10 | 15 | 18 | 20 | 21 | 17 | 14 | 12 | 156 |
| LCWSP PUMPING FOR RECLAMATION | 3/ | | | | | | | | | | | | | | 156 |
| Total amount of Colorado River water use offset by LCWSP pumping | | | | | | | | | | | | | | | 1,050 |
| LCWSP WATER AVAILABLE TO MWD | 7/ | | | | | | | | | | | | | | 6,300 |

Footnotes:

- 1/ Non-Colorado River water pumped from the LCWSP wellfield and delivered into the AAC for use by IID. IID forebears the diversion of this amount from the Colorado River to make water available for exchange by the LCWSP beneficiaries.
- 2/ LCWSP non-Federal contractor (City of Needles) and subcontractors - Colorado River water use exchanged with LCWSP water.
- 3/ The amount of LCWSP wellfield pumping exchanged for Colorado River water by the non-Federal LCWSP beneficiaries in 2008.
- 4/ Prior to 2007, pumpage from the wellfield was determined by the amount of water ordered by LCWSP beneficiaries. From the start of the LCWSP IID has pumped more water from the wellfield than was ordered and consumed from the Colorado River by LCWSP beneficiaries. The difference between the amount pumped and the amount consumed created a balance of unused LCWSP water. All remaining balances by the Non-Federal LCWSP beneficiaries were consumed in 2007. In 2008 BLM consumed the remainder of its balance.
- 5/ Portion of the LCWSP allocated to the BLM. Colorado River water use exchanged with LCWSP accrued balance and wellfield pumpage.
- 6/ Portion of the LCWSP allocated to the Bureau of Reclamation. Colorado River water use exchanged with LCWSP wellfield pumpage.
- 7/ This is the total amount of water pumped from the wellfield minus wellfield pumpage for each of the other LCWSP participants.

CONSERVATION, TRANSFER, AND EXCHANGE AGREEMENTS BY STATE

Colorado River water apportioned to the Lower Division states has been further apportioned among the states of Arizona, California, and Nevada and is generally committed to specific persons or entities on a permanent basis. Increasing water demands within the Lower Division states must be met through a combination of conservation, transfers, exchanges, or new water sources which augment the limited supply of Colorado River water.

The Lower Colorado Water Supply Project (LCWSP) implements a 1986 statute which authorizes the exchange of non-Colorado River water for Colorado River water within the State of California. Water accounting information relating to the LCWSP appears in the previous section of this report.

On October 10, 2003, the Secretary of the Interior entered into the Colorado River Water Delivery Agreement (CRWDA) with Imperial Irrigation District, Coachella Valley Water District, The Metropolitan Water District of Southern California, and the San Diego County Water Authority to resolve longstanding disputes regarding the priority, use, and transfer of Colorado River water within California. The CRWDA recognizes a variety of water transfers, exchanges, and conservation programs which alter the delivery of certain Colorado River water for up to 75 years.

The California agencies entered into a series of supplemental agreements, including the Quantification Settlement Agreement, that collectively implement many provisions of the CRWDA through water transfers, water exchanges, and water conservation measures. Data relating to these California events are depicted here. There were no transfers or exchanges of Colorado River water reported within Arizona or Nevada during calendar year 2008.

Description of Included Tables

The table titled “Comparison of Net California Agricultural Use to the 2008 ISG Annual Target” demonstrates the impact of conservation and transfers on agricultural water use in California in 2008. The table titled “Transfers, Exchanges and Water Made Available by Extraordinary Conservation” tabulates agreements in California existing outside of the CRWDA or in amounts that differ from the amounts tabulated in Exhibit B of the CRWDA. The table titled Exhibit B is reproduced from the CRWDA for convenient reference.

COMPARISON OF NET CALIFORNIA AGRICULTURAL USE TO THE 2008 ISG TARGET ¹
CALENDAR YEAR 2008

| Uses by California Agricultural Entities | 08/01/09 Ftns | Consumptive Uses Acre-Feet | Comments |
|--|------------------|-------------------------------|--|
| Palo Verde Irrigation District | | 374,995 | |
| Yuma Project Reservation Division | | 45,592 | |
| Yuma Island Pumpers | 2/ | 6,472 | Yuma Island pumpers diversion was 11,700 af x 0.553 CU factor = 6,470 af of CU. |
| Priorities 1, 2, 3b | | 427,059 | |
| CVWD | | 299,064 | |
| IID | | 2,825,116 | |
| Total California Agricultural Use | | 3,551,239 | |
| MWD Adjustments for Priority 1, 2, and 3b use | | (7,058) | MWD's reductions for priorities 1, 2, and 3b count toward meeting the ISG annual target. |
| IID IOPP Payback | | 14,052 | |
| CVWD CRWDA Exhibit C Payback | 3/ | 6,989 | |
| MWD-CVWD Exchange | | 0 | |
| IID and CVWD reductions for PPRs | | 14,500 | IID = 11,500 af, CVWD = 3,000 af. |
| Use by California Agriculture+MWD Adjustment+ Agricultural paybacks+IID/CVWD covered PPRs | | 3,579,722 | |
| ISG Target Comparison | | | |
| 2008 Agricultural Target | | 3,566,000 | See Row 6, Column 23 of Exhibit B of the CRWDA |
| Use by California Agriculture+MWD Adjustment+ Agricultural paybacks+IID/CVWD covered PPRs | | 3,579,722 | |
| Total Target Overrun | | 13,722 | |
| | | | |
| Priority 1, 2, and 3b Use Below or (Above) 420,000 af | | | |
| Palo Verde Irrigation District | | 374,995 | |
| Yuma Project Reservation Division | | 45,592 | |
| Yuma Island Pumpers | 2/ | 6,472 | |
| Total Priority 1, 2, 3b Use | | 427,059 | |
| MWD reduction for Priority 1, 2, and 3b water use | | 7,059 | Per Section 4.d of the CRWDA, MWD use is reduced by Priority 1, 2, and 3b use greater than 420,000 af. |
| Priority 1, 2, and 3b water delivered to MWD | | 0 | Per Section 4.d of the CRWDA, Priority 1, 2, and 3b use less than 420,000 af is delivered to MWD. |

Footnotes:

- 1/ Part XI, Section 5, Record of Decision of the Colorado River Interim Surplus Guidelines FEIS contain the adopted Interim Surplus Guidelines (ISG). Section 5 of the ISG contains benchmarks for aggregate California agricultural water use during each third year. Exhibit B (attached) to the CRWDA, column 22 references these ISG Benchmarks, and column 23 references annual targets for aggregate agricultural water use for the years between the ISG Benchmarks. Footnotes 2 and 12 of Exhibit B define annual targets and benchmark year aggregate agricultural use totals as all consumptive use of Priorities 1 through 3 plus 14,500 of PPR use, minus MWD adjustments for Priority 1 through 3 use above 420,000 af.
- 2/ Incorporation of Yuma Island Pumpers' use within Priority 2 does not represent either a final approval of this use by Reclamation or a final determination of the appropriate Decree accounting for this use; and is not an admission by any Colorado River contractor as to the legality of this use or diversion of Colorado River water.
- 3/ Repayment of overrun amounts does not count as compliance with transfers set forth in Ex. B of the CRWDA, per section 8.a of the CRWDA.

TRANSFERS, EXCHANGES AND WATER MADE AVAILABLE BY EXTRAORDINARY CONSERVATION
 CALENDAR YEAR 2008
 STATE OF ARIZONA

| TRANSFER PROGRAM OR PARTICIPATING AGENCIES | 08/01/09 | (ACRE-FEET) | | | | | | | | | | | |
|--|----------|-------------|-----|-----|-----|-----|-----|-----|-----|-----|-----|-----|-----|
| | Ftnts | JAN | FEB | MAR | APR | MAY | JUN | JUL | AUG | SEP | OCT | NOV | DEC |

No transfers were reported to Reclamation during this calendar year

Footnotes:

No footnotes for this calendar year.

TRANSFERS, EXCHANGES AND WATER MADE AVAILABLE BY EXTRAORDINARY CONSERVATION
CALENDAR YEAR 2008
STATE OF CALIFORNIA

| TRANSFER PROGRAM OR PARTICIPATING AGENCIES | 08/01/09 | | | | | | | | | | | | | TOTAL | |
|---|----------|-------|-------|--------|--------|-------|-------|--------|-------|-------|-------|-------|-------|--------|---------|
| | Ftnts | JAN | FEB | MAR | APR | MAY | JUN | JUL | AUG | SEP | OCT | NOV | DEC | | |
| WATER CONSERVATION PROGRAM IID/MWD CONSERVED WATER | 1/ | | | | | | | | | | | | | | 105,000 |
| MWD REDUCTION FOR CVWD USE - IID CONSERVATION | 2/ | 1,359 | 1,227 | 1,359 | 1,315 | 1,359 | 1,315 | 1,359 | 1,359 | 1,315 | 1,359 | 1,315 | 1,359 | 16,000 | |
| IID CONSERVATION FOR TRANSFER TO SDCWA | 3/ | 5,287 | 6,278 | 11,930 | 12,041 | 8,361 | 6,103 | 0 | 0 | 0 | 0 | 0 | 0 | 50,000 | |
| IID CONSERVATION FOR TRANSFER TO SDCWA - MITIGATION | 4/ | 0 | 0 | 0 | 0 | 0 | 549 | 11,033 | 9,158 | 5,345 | 0 | 0 | 0 | 26,085 | |
| IID CONSERVATION FOR INTRA-PRIORITY TRANSFER TO CVWD | 5/ | 0 | 141 | 524 | 697 | 811 | 805 | 906 | 116 | 0 | 0 | 0 | 0 | 4,000 | |
| MWD/PVID FORBEARANCE AND FALLOWING PROGRAM | 6/ | | | | | | | | | | | | | 94,303 | |
| ALL-AMERICAN CANAL LINING PROJECT - TOTAL CONSERVATION | 7/ | 0 | 0 | 0 | 0 | 0 | 728 | 1,254 | 1,254 | 1,213 | 1,466 | 1,468 | 1,516 | 8,898 | |
| ALL-AMERICAN CANAL LINING PROJECT - SDCWA EXCHANGE WITH MWD | 7/ | 0 | 0 | 0 | 0 | 0 | 604 | 1,040 | 1,040 | 1,007 | 1,217 | 1,218 | 1,258 | 7,385 | |
| ALL -AMERICAN CANAL LINING PROJECT SUPPLEMENTAL WATER - MWD | 7/ | 0 | 0 | 0 | 0 | 0 | 0 | 0 | 0 | 0 | 0 | 0 | 1,513 | 1,513 | |
| COACHELLA CANAL LINING PROJECT - TOTAL CONSERVATION | 8/ | 2,364 | 2,148 | 2,364 | 2,288 | 2,364 | 2,288 | 2,364 | 2,364 | 2,288 | 2,364 | 2,288 | 2,364 | 27,850 | |
| COACHELLA CANAL LINING PROJECT - SDCWA EXCHANGE WITH MWD | 8/ | 1,970 | 1,779 | 1,970 | 1,907 | 1,970 | 1,907 | 1,970 | 1,970 | 1,907 | 1,970 | 1,907 | 1,970 | 23,197 | |
| COACHELLA CANAL LINING PROJECT - SUPPLEMENTAL WATER - MWD | 8/ | 381 | 357 | 381 | 369 | 381 | 369 | 381 | 381 | 369 | 381 | 369 | 381 | 4,500 | |
| COACHELLA CANAL LINING PROJECT - MITIGATION | 8/ | 13 | 12 | 13 | 13 | 13 | 13 | 13 | 13 | 13 | 13 | 13 | 13 | 153 | |

Notes: The remaining Exhibit B transfers, exchanges and conservation can be determined from Exhibit B in this report.
Reclamation recognizes the CRWDA allows each party to make water available or to divert water made available based upon its own schedule.

Footnotes:

- 1/ 1988 IID/MWD Water Conservation Program conserved water, determined in accordance with the amended 1988 Program Agreement and the amended 1989 Approval Agreement, made available by IID for diversion in current year by MWD, reported as an annual total.
- 2/ MWD reduction for up to 20,000 af of water conserved by IID under the 1988 IID/MWD Water Conservation Program for use by CVWD.
This reduction occurs at CVWD's request in accordance with the 1989 Approval Agreement as amended.
- 3/ The CRWDA specifies required conservation by IID for transfer to SDCWA. This amount is found in Column 5 of Exhibit B of the CRWDA.
- 4/ The water exchanged with SDCWA for delivery by exchange to the Salton Sea for mitigation purposes, made available through conservation actions within IID.
- 5/ This is water conserved by IID under the Acquisition Agreement between IID and CVWD. The annual conservation amount is found in Column 8 of Exhibit B of the CRWDA.
- 6/ Annual PVID reduction in consumptive use through land fallowing as reported in Table 8 of the report produced jointly by Reclamation, PVID, and MWD entitled, "Calendar Year 2008 Fallowed Land Verification Report."
The value represents the estimated reduction in PVID consumptive use resulting from the fallowing of 14,607 acres of land for the months of January through July, and 25,947 acres for the months of August through December.
- 7/ Water conserved through the construction of a new concrete lined canal parallel to the unlined All-American Canal. The Secretarial Determination of water conserved by the lining of Reaches 2 and 3 of the project was issued in February 2009 (see Significant Documents). Water resulting from conservation was distributed in accordance with the Allocation Agreement among the United States, MWD, CVWD IID, SDCWA, and the SLRSP, dated October 10, 2003.
- 8/ Water conserved through the construction of a new concrete lined canal parallel to a portion of the unlined Coachella Canal. The Secretarial Determination of water conserved by the project was issued in January 2008 (see Significant Documents). Water resulting from conservation was distributed in accordance with the Allocation Agreement among the United States, MWD, CVWD, IID, SDCWA, and the SLRSP, dated October 10, 2003 and Exhibit B to the Settlement Agreement between CVWD and SDCWA, dated October 30, 2007.

TRANSFERS, EXCHANGES AND WATER MADE AVAILABLE BY EXTRAORDINARY CONSERVATION
 CALENDAR YEAR 2008
 STATE OF NEVADA

| | 08/01/09 | (ACRE-FEET) | | | | | | | | | | | | |
|--|----------|-------------|-----|-----|-----|-----|-----|-----|-----|-----|-----|-----|-----|-------|
| TRANSFER PROGRAM OR PARTICIPATING AGENCIES | Ftnts | JAN | FEB | MAR | APR | MAY | JUN | JUL | AUG | SEP | OCT | NOV | DEC | TOTAL |

No transfers were reported to Reclamation during this calendar year

Footnotes:

No footnotes for this calendar year.

WATER MADE AVAILABLE BY EXTRAORDINARY CONSERVATION
 CALENDAR YEAR 2008
 BUREAU OF RECLAMATION

| TRANSFER PROGRAM OR PARTICIPATING AGENCIES | 08/01/09 | (ACRE-FEET) | | | | | | | | | | | | |
|--|----------|-------------|-------|-------|-------|-------|-------|-------|-------|-------|-------|-------|-------|--------|
| | Ftnts | JAN | FEB | MAR | APR | MAY | JUN | JUL | AUG | SEP | OCT | NOV | DEC | TOTAL |
| YMIDD/USBR AGREEMENT FOR SYSTEM CONSERVATION | 1 | 267 | 241 | 267 | 258 | 267 | 258 | 267 | 267 | 258 | 267 | 258 | 267 | 3,138 |
| ARIZONA GROUND WATER PERMIT | 2 | 2,123 | 1,918 | 2,123 | 2,055 | 2,123 | 2,055 | 2,123 | 2,123 | 2,055 | 2,123 | 2,055 | 2,123 | 25,000 |

Footnotes:

1/ Reclamation entered into a system conservation agreement with YMIDD to conserve water.

In 2008, 3,138 acre-feet of water created as a result of the YMIDD System Conservation Program remained in Lake Mead.

2/ In 2007, Reclamation was granted a permit to withdraw Arizona ground water for return credits to offset bypass flows to Mexico. The values shown represent the return flow credits earned pursuant to the permit.

EXHIBIT B

QUANTIFICATION AND TRANSFERS¹

In Thousands of Acre-feet

| Column: | 1 | 2 | 3 | 4 | 5 | 6 | 7 | 8 | 9 | 10 | 11 | 12 | 13 | 14 | 15 | 16 | 17 | 18 | 19 | 20 | 21 | 22 | 23 |
|---------|-------------------------|----------------------|----------------------------------|--|------------------------------|---------------------------------------|--------------------------------------|-----------------------------------|---|--|-------------------------|---|---|------------------------------------|--|---------------------------|--|-----------------------------------|------------------------------------|---|---|------------------------------|------------------------------|
| | Calendar Year | Priority 1, 2 and 3b | ID Priority 3a Quantified Amount | Reduction: MWD 1988 Agreement Transfer | ID Reduction: SDCWA Transfer | Reduction: AAC Lining ID, SDCWA & SLR | Reduction: SDCWA Mitigation Transfer | Intra-Priority 3 Transfer ID/CVWD | Reduction: MWD Transfer with Salton Sea Restoration | Reduction: ID Conditional ISG Backfill | Reduction: ID Msc. PPRs | ID Reductions: Total Amount (sum of columns 4 through 11) | ¹⁰ ID Net Consumptive Use Amount (difference between column 3 and column 12) | CVWD Priority 3a Quantified Amount | Reduction: CVWD CC Lining, SDCWA & SLR | Reduction: CVWD Msc. PPRs | ¹¹ CVWD Reductions: Total Amount (sum of columns 15 + 16) | Intra-Priority 3 Transfer ID/CVWD | Intra-Priority 3 Transfer MWD/CVWD | CVWD Net Consumptive Use Amount (columns 14 - 17 plus column 18 + 19) | Total Priority 1-3 Use Plus PFR Consumptive Use (sum of columns 2+13+20 plus 11+16) | ¹² ISG Benchmarks | ¹² Annual Targets |
| 1 | 2003 | 420 | 3,100 | 110 | 10 | 0 | 5 | 0 | 0 | 0 | 11.5 | 136.5 | 2,963.5 | 330 | 0 | 3 | 3 | 0 | 20 | 347 | 3,745.0 | 3,740 | 3,740 |
| 2 | 2004 | 420 | 3,100 | 110 | 20 | 0 | 10 | 0 | 0 | 0 | 11.5 | 151.5 | 2,948.5 | 330 | 0 | 3 | 3 | 0 | 20 | 347 | 3,730.0 | | 3,707 |
| 3 | 2005 | 420 | 3,100 | 110 | 30 | 0 | 15 | 0 | 0 | 0 | 11.5 | 166.5 | 2,933.5 | 330 | 0 | 3 | 3 | 0 | 20 | 347 | 3,715.0 | | 3,674 |
| 4 | 2006 | 420 | 3,100 | 110 | 40 | 0 | 20 | 0 | 0 | 9 | 11.5 | 190.5 | 2,909.5 | 330 | 26 | 3 | 29 | 0 | 20 | 321 | 3,665.0 | 3,640 | 3,640 |
| 5 | 2007 | 420 | 3,100 | 110 | 50 | 0 | 25 | 0 | 0 | 0 | 11.5 | 196.5 | 2,903.5 | 330 | 26 | 3 | 29 | 0 | 20 | 321 | 3,659.0 | | 3,603 |
| 6 | 2008 | 420 | 3,100 | 110 | 50 | 67.7 | 25 | 4 | 20 | 0 | 11.5 | 288.2 | 2,811.8 | 330 | 26 | 3 | 29 | 4 | 20 | 325 | 3,571.3 | | 3,566 |
| 7 | 2009 | 420 | 3,100 | 110 | 60 | 67.7 | 30 | 8 | 40 | 0 | 11.5 | 327.2 | 2,772.8 | 330 | 26 | 3 | 29 | 8 | 20 | 329 | 3,536.3 | 3,530 | 3,530 |
| 8 | 2010 | 420 | 3,100 | 110 | 70 | 67.7 | 35 | 12 | 60 | 0 | 11.5 | 366.2 | 2,733.8 | 330 | 26 | 3 | 29 | 12 | 20 | 333 | 3,501.3 | | 3,510 |
| 9 | 2011 | 420 | 3,100 | 110 | 80 | 67.7 | 40 | 16 | 80 | 0 | 11.5 | 405.2 | 2,694.8 | 330 | 26 | 3 | 29 | 16 | 20 | 337 | 3,466.3 | | 3,490 |
| 10 | 2012 | 420 | 3,100 | 110 | 90 | 67.7 | 45 | 21 | 100 | 0 | 11.5 | 445.2 | 2,654.8 | 330 | 26 | 3 | 29 | 21 | 20 | 342 | 3,431.3 | 3,470 | 3,470 |
| 11 | 2013 | 420 | 3,100 | 110 | 100 | 67.7 | 70 | 26 | 100 | 0 | 11.5 | 485.2 | 2,614.8 | 330 | 26 | 3 | 29 | 26 | 20 | 347 | 3,396.3 | | 3,462 |
| 12 | 2014 | 420 | 3,100 | 110 | 100 | 67.7 | 90 | 31 | 100 | 0 | 11.5 | 510.2 | 2,589.8 | 330 | 26 | 3 | 29 | 31 | 20 | 352 | 3,376.3 | | 3,455 |
| 13 | 2015 | 420 | 3,100 | 110 | 100 | 67.7 | 110 | 36 | 100 | 0 | 11.5 | 535.2 | 2,564.8 | 330 | 26 | 3 | 29 | 36 | 20 | 357 | 3,356.3 | | 3,448 |
| 14 | 2016 | 420 | 3,100 | 110 | 100 | 67.7 | 130 | 41 | 100 | 0 | 11.5 | 560.2 | 2,539.8 | 330 | 26 | 3 | 29 | 41 | 20 | 362 | 3,336.3 | | 3,440 |
| 15 | 2017 | 420 | 3,100 | 110 | 100 | 67.7 | 150 | 45 | 91 | 0 | 11.5 | 575.2 | 2,524.8 | 330 | 26 | 3 | 29 | 45 | 20 | 366 | 3,325.3 | | |
| 16 | 2018 | 420 | 3,100 | 110 | 130 | 67.7 | 0 | 63 | 0 | 0 | 11.5 | 382.2 | 2,717.8 | 330 | 26 | 3 | 29 | 63 | 20 | 384 | 3,536.3 | | |
| 17 | 2019 | 420 | 3,100 | 110 | 160 | 67.7 | 0 | 68 | 0 | 0 | 11.5 | 417.2 | 2,682.8 | 330 | 26 | 3 | 29 | 68 | 20 | 389 | 3,506.3 | | |
| 18 | 2020 | 420 | 3,100 | 110 | 193 | 67.7 | 0 | 73 | 0 | 0 | 11.5 | 454.7 | 2,645.3 | 330 | 26 | 3 | 29 | 73 | 20 | 394 | 3,473.8 | | |
| 19 | 2021 | 420 | 3,100 | 110 | 205 | 67.7 | 0 | 78 | 0 | 0 | 11.5 | 472.2 | 2,627.8 | 330 | 26 | 3 | 29 | 78 | 20 | 399 | 3,461.3 | | |
| 20 | 2022 | 420 | 3,100 | 110 | 203 | 67.7 | 0 | 83 | 0 | 0 | 11.5 | 474.7 | 2,625.3 | 330 | 26 | 3 | 29 | 83 | 20 | 404 | 3,463.8 | | |
| 21 | 2023 | 420 | 3,100 | 110 | 200 | 67.7 | 0 | 88 | 0 | 0 | 11.5 | 477.2 | 2,622.8 | 330 | 26 | 3 | 29 | 88 | 20 | 409 | 3,466.3 | | |
| 22 | 2024 | 420 | 3,100 | 110 | 200 | 67.7 | 0 | 93 | 0 | 0 | 11.5 | 482.2 | 2,617.8 | 330 | 26 | 3 | 29 | 93 | 20 | 414 | 3,466.3 | | |
| 23 | 2025 | 420 | 3,100 | 110 | 200 | 67.7 | 0 | 98 | 0 | 0 | 11.5 | 487.2 | 2,612.8 | 330 | 26 | 3 | 29 | 98 | 20 | 419 | 3,466.3 | | |
| 24 | 2026 | 420 | 3,100 | 110 | 200 | 67.7 | 0 | 103 | 0 | 0 | 11.5 | 492.2 | 2,607.8 | 330 | 26 | 3 | 29 | 103 | 20 | 424 | 3,466.3 | | |
| 25 | 2027 | 420 | 3,100 | 110 | 200 | 67.7 | 0 | 103 | 0 | 0 | 11.5 | 492.2 | 2,607.8 | 330 | 26 | 3 | 29 | 103 | 20 | 424 | 3,466.3 | | |
| 26 | 2028 | 420 | 3,100 | 110 | 200 | 67.7 | 0 | 103 | 0 | 0 | 11.5 | 492.2 | 2,607.8 | 330 | 26 | 3 | 29 | 103 | 20 | 424 | 3,466.3 | | |
| | 2029-2037 | 420 | 3,100 | 110 | 200 | 67.7 | 0 | 103 | 0 | 0 | 11.5 | 492.2 | 2,607.8 | 330 | 26 | 3 | 29 | 103 | 20 | 424 | 3,466.3 | | |
| | 2038-2047 ¹³ | 420 | 3,100 | 110 | 200 | 67.7 | 0 | 103 | 0 | 0 | 11.5 | 492.2 | 2,607.8 | 330 | 26 | 3 | 29 | 103 | 20 | 424 | 3,466.3 | | |
| | 2048-2077 ¹⁴ | 420 | 3,100 | 110 | 200 | 67.7 | 0 | 100 | 0 | 0 | 11.5 | 489.2 | 2,610.8 | 330 | 26 | 3 | 29 | 100 | 20 | 421 | 3,466.3 | | |

1 Exhibit B is independent of increases and reductions as allowed under the Inadvertent Overrun and Payback Policy.
2 Any higher use covered by MWD, any lesser use will produce water for MWD and help satisfy ISG Benchmarks and Annual Targets.
3 IID/MWD 1988 Conservation Program conserves up to 110,000 AFY and the amount is based upon periodic verification. Of amount conserved, up to 20,000 AFY to CVWD (column 19), which does not count toward ISG Benchmarks and Annual Targets, and remainder to MWD.
4 Ramp-up amounts may vary based upon construction progress, and final amounts will be determined by the Secretary pursuant to the Allocation Agreement.
5 Any amount identified in Exhibit B for mitigation purposes will only be from non-Colorado River sources and these amounts may be provided by exchange for Colorado River water.
6 Water would be transferred to MWD subject to satisfaction of certain conditions and to appropriate federal approvals. For informational purposes only, these transfers may also be subject to state approvals. Schedules are subject to adjustments with mutual consent.
7 MWD can acquire if CVWD declines the water. Any water obtained by MWD will be counted as additional agricultural reduction to help satisfy the ISG Benchmarks and Annual Targets. MWD will provide CVWD 50,000 AFY of the 100,000 AFY starting in year 46.
8 IID has agreed to provide transfer amounts to meet the minimum ISG benchmarks, not to exceed a cumulative total of 145,000 AF. Maximum transfer amounts are 25,000 AF in 2006, 50,000 AF plus the unused amount from 2006 in 2009, and 70,000 AF plus the unused amounts from 2006 and 9 up to the amount shown, as agreed upon reduction to IID or CVWD to cover collectively the sum of individual Miscellaneous PPRs, federal reserved rights and decreed rights. This is a reduction that counts towards ISG Benchmarks and Annual Targets.
9 For purposes of Subparagraph 8(b)(2)(i) and (ii) and 8(c)(1) and (4) the Secretary will take into account: (i) the satisfaction of necessary conditions to certain transfers (columns 7 and 9) not within IID's control; (ii) the amounts of conserved water as determined, where such amounts may vary (columns 4, 6, 9 and 10); and (iii) with respect to column 7, reductions by IID will be considered in determining IID's compliance regardless of whether the conserved water is diverted into the Colorado River Aqueduct.
10 For purposes of Subparagraph 8(c)(1) and (4) the Secretary will take into account: (i) the satisfaction of necessary conditions to certain transfers (columns 15 and 16) not within CVWD's control; and (ii) the amounts of conserved water as determined, where such amounts may vary (column 15).
11 All-consumptive use of priorities 1 through 3 plus 14,500 AF of PPRs must be within 25,000 AF of the amount stated.
12 Assumes SDCWA does not elect termination in year 35.
13 Assumes SDCWA and IID mutually consent to renewal term of 30 years.

Notes:
Substitute transfers can be made provided the total volume of water to be transferred remains equal or greater than amounts shown consistent with applicable federal approvals.

INTENTIONALLY CREATED SURPLUS WATER

On December 13, 2007, the Record of Decision, Colorado River Interim Guidelines for Lower Basin Shortages and the Coordinated Operations for Lake Powell and Lake Mead (Interim Guidelines) was signed. Section 3, pages 38-43 of the Interim Guidelines contains the policies and guidelines concerning the categories of, creation, delivery, and accounting for Intentionally Created Surplus (ICS) water.

Prior to the signing of the Interim Guidelines, Reclamation had in 2006, entered into letter agreements with the Imperial Irrigation District and The Metropolitan Water District of Southern California to implement a demonstration program for the development of ICS. The demonstration program covered the creation of ICS water during calendar years 2006 and 2007. "ICS water" in this program referred to a quantity of surplus water that the Secretary may make available for release under Article II(B)(2) of the Consolidated Decree of the Supreme Court of the United States in *Arizona v. California*, 547 U.S. 150 (2006) (Consolidated Decree) as Intentionally Created Surplus. The demonstration program required the creation of ICS water through extraordinary conservation. Beginning in 2008, the creation and use of ICS water is governed by the Interim Guidelines.

Under the Interim Guidelines four types of ICS water may be created by an approved contractor: Extraordinary Conservation ICS, Tributary Conservation ICS, System Efficiency ICS, and Imported ICS. Also stipulated in the Interim Guidelines are the limits as to how much ICS water of each type may be created each year and in total, as well as how much ICS water may be delivered by the Secretary each year.

The following conditions apply to ICS water:

- 1) During the year of creation, and with the exception of System Efficiency ICS, five percent of the ICS water created will be dedicated to system storage to provide a collective storage benefit for Colorado River users,
- 2) An annual evaporation loss of three percent will be applied to the remaining ICS water beginning the year after its creation,
- 3) Under flood control releases ICS water will be the first released, and
- 4) If the conserving entity incurs an overrun during a year when ICS water is to be created, the ICS creation will be reduced by the amount of the overrun, up to the amount of ICS proposed.

The Secretary is responsible for approving plans for the creation of ICS water, allowing for their modification, and developing procedures to account for and verify ICS creation and delivery.

Copies of the demonstration program agreements and the Interim Guidelines can be found in the Significant Documents section of the report.

INTENTIONALLY CREATED SURPLUS BALANCES
BY STATE, USER AND TYPE OF ICS
CALENDAR YEAR 2008

| State | User | ICS Type | Year | 8/1/09 (ACRE-FEET) | | | | | | |
|--|------|--|------|--------------------|-----------------------|---------------------------|-----------------------------|-------------------------------|------------------------|--------------------------|
| | | | | BOY Balance | Creation ² | IOPP Payback ³ | System Benefit ⁴ | Evaporation Loss ⁵ | Diversion ⁶ | EOY Balance ⁷ |
| Note: Rows hi-lighted to improve readability only. | | | | | | | | | | |
| ARIZONA | | | | | | | | | | |
| | CAP | System Efficiency | 2008 | 0 | 100,000 | 0 | NA | NA | 0 | 100,000 |
| CALIFORNIA | | | | | | | | | | |
| | MWD | Extraordinary Conservation (Demonstration Prog.) ¹ | 2006 | 0 | 50,000 | 7,619 | 2,119 | 0 | 0 | 40,262 |
| | | | 2007 | 40,262 | 2,382 | 0 | 119 | 1,127 | 0 | 41,398 |
| | | | 2008 | 41,398 | 0 | 0 | 0 | 853 | 12,976 | 27,569 |
| | MWD | System Efficiency | 2008 | 0 | 100,000 | 0 | NA | NA | 34,000 | 66,000 |
| | IID | Extraordinary Conservation | 2006 | 0 | 1,000 | 1,000 | 0 | 0 | 0 | 0 |
| NEVADA | | | | | | | | | | |
| | SNWA | Tributary Conservation | 2008 | 0 | 10,457 | 312 | 507 | 0 | 9,638 | 0 |
| | SNWA | System Efficiency | 2008 | 0 | 400,000 | 0 | NA | NA | 0 | 400,000 |

Footnotes:

- 1 In 2006, Reclamation entered into separate agreements with MWD and IID to implement a demonstration program to create Extraordinary Conservation Intentionally Created Surplus (ICS) during 2006 and 2007. The agreements define the terms that allow MWD and/or IID to store conserved water in Lake Mead and are available for review in the Significant Documents portion of this report.
- 2 The amount of ICS water created by the contractor during the calendar year. SNWA's Tributary Conservation ICS is provisional pending Reclamation final verification.
- 3 In accordance with Section 3.C.7 of the Interim Surplus Guidelines for the Operation of Lake Powell and Lake Mead, if a contractor has an overrun payback obligation, the contractor must repay the overrun payback obligation in full before requesting or receiving delivery of ICS. The contractor's ICS account shall be reduced by the full overrun payback balance before the amount of ICS credits available to the contractor is calculated.
- 4 During the year of creation, five percent of the ICS water created will be dedicated to storage in the Colorado River system reservoirs.
- 5 Under the Demonstration Program, the balance of the ICS water shall be subject to an evaporation loss of 2.8 percent in the year following the creation of ICS water. Beginning in calendar year 2008, the evaporation loss factor is 3.0 percent, per the Interim Guidelines.
- 6 Diversion of ICS balance.
- 7 The EOY balance of ICS water including creation and reductions taking place in the accounting year.

DOCUMENTS AND LETTERS SIGNIFICANT TO THE DELIVERY OF AND ACCOUNTING FOR THE USE OF COLORADO RIVER WATER IN CY 2008

These documents provide the reader an opportunity to read the agreements, letters, regulations and operating plans that impacted Reclamation's delivery of Colorado River water during calendar year 2008.

The compact disc (CD) located in the pocket on the back cover of this report contains the documents significant to the delivery of Colorado River water in 2008. These electronically filed documents are in searchable Acrobat[®] (PDF) format. The list below provides a brief description of each significant document's contents and the file name under which that document may be found on the CD. The file names are printed exactly as they appear on the CD. The acronyms used below are defined in the Acronyms and Abbreviated Terms on page one of this report. Anyone desiring additional water accounting information is encouraged to log on to the following website, where all previous water accounting reports can be viewed and the complete PDF file may be downloaded: www.usbr.gov/lc/region/g4000/wtracct.html.

RECORDS OF DECISION

Colorado River Interim Guidelines for Lower Basin Shortages and the Coordinated Operations for Lake Powell and Lake Mead

- CD file name: 2008 ROD Interim Guidelines-Shortages-Coordinated Operations

REPORTS:

2008 Annual Operating Plan (AOP) Executive Summary

Outlines the criteria under which the Colorado River will be operated during CY 2008 given current and anticipated conditions.

- CD file name: 2008 AOP Executive Summary

2008 Report on Southern Nevada Water Authority Interstate Account

Details the amount of water stored by MWD for SNWA from CY 2004 through CY 2008.

- CD file name: MWD-BR Report on SNWA Interstate Account 2009-02-24

2008 Annual Data Report to Transport Groundwater Withdrawn from the Yuma Groundwater Basin

Annual report from Reclamation informing ADWR of the amount of groundwater that was withdrawn from the Yuma Groundwater Basin and transported to the Colorado River for the benefit of the United States in CY 2008.

- CD file name: 2008 Annual Groundwater Transportation Report 2009-03-30

DOCUMENTS AND LETTERS SIGNIFICANT TO THE DELIVERY OF AND ACCOUNTING FOR THE USE OF COLORADO RIVER WATER IN CY 2008 (cont.)

AGREEMENTS:

Demonstration Program for System Conservation of Colorado River Water

An agreement between YMIDD and Reclamation to conserve 3,500 acre-feet of Colorado River water in 2008 through voluntary supplemental fallowing within YMIDD boundaries.

- CD file name: 2008 BR to YMIDD System Conservation Agreement

INTENTIONALLY CREATED SURPLUS PLANS:

SNWA's plan of creation of Tributary Conservation Intentionally Created Surplus (ICS) for calendar years 2008-2009

A plan for the creation of Tributary Conservation ICS for calendar years 2008-2009 by SNWA

- CD file name: SNWA ICS Plan 2008 – 2009

LETTERS:

ADWR's approval for the multi-year permit no. 30.001 which allows Reclamation to withdraw and transport up to 25,000 acre-feet of groundwater from the Yuma Basin

- CD file name: ADWR to BR Permit to Transport Groundwater 2007-03-01

A letter from ADWR to Reclamation authorizing Reclamation to withdraw and transport 25,000 acre-feet of groundwater from the Yuma Basin in Calendar Year 2008

- CD file name: 2008 ADWR Approval of BR's GW Permit Application 2007-10-24

A letter from MWD to CAWCD requesting to recover 25,000 acre-feet of ICUA in 2008

- CD file name: 2008 MWD-CAWCD Request to Recover Interstate Underground Storage Credits 2007-06-27

A letter from AWBA to Reclamation concerning accounting requirements for development and recovery of ICUA in 2008 for MWD

- CD file name: 2008 AWBA to BR Response to MWD ICUA Recovery Request 2007-12-20

A letter from AWBA to Reclamation revising its schedule for recovery and development of ICUA in 2008 for MWD
Unused Apportionment (ICUA) in 2008 for MWD

- CD file name: 2008 AWBA to BR Revised ICUA Estimate for MWD 2008-12-23

DOCUMENTS AND LETTERS SIGNIFICANT TO THE DELIVERY OF AND ACCOUNTING FOR THE USE OF COLORADO RIVER WATER IN CY 2008 (cont.)

LETTERS:

A letter from AWBA to Reclamation verifying the amount of water stored in Arizona for Nevada under the SIRA for 2008.

- CD file name: 2008 AWBA to BR Verified Interstate Storage Credits 2009-04-15

A letter from ABWA to Reclamation verifying the amount of ICUA recovered for MWD for 2008.

- CD file name: 2008 AWBA ICUA Verification 2009-06-17

A letter from SNWA to MWD requesting MWD to store 15,000 acre-feet of Nevada unused apportionment

- CD file name: 2008 SNWA to MWD Request to Store NV Unused Apportionment 2008-02-12

A letter from MWD to Reclamation and SNWA indicating its ability to store 15,000 acre-feet of Nevada unused apportionment

- CD file name: 2008 MWD Availability to Store NV Unused Apportionment 2008-03-10

A letter from Reclamation to CRC authorizing the storing of 15,000 acre-feet of Nevada unused apportionment with MWD

- CD file name: 2008 BR to CRC Approval to Store NV Unused Apportionment with MWD 2008-05-14

A letter from SNWA to MWD requesting MWD to store 30,000 acre-feet of Nevada unused apportionment

- CD file name: 2008 SNWA to MWD Request to Store NV Unused Apportionment 2008-10-09

A letter from MWD to Reclamation and SNWA indicating its ability to store 30,000 acre-feet of Nevada unused apportionment

- CD file name: 2008 MWD Availability to Store NV Unused Apportionment 2008-10-27

A letter from Reclamation to MWD confirming MWD's ability to store 30,000 acre-feet of Nevada unused apportionment

- CD file name: 2008 BR to MWD Confirmation to Store NV Unused Apportionment 2008-12-09

A letter from Reclamation to SNWA authorizing the storing of 30,000 acre-feet of Nevada unused apportionment with MWD

- CD file name: 2008 BR to SNWA Approval to Store NV Unused Apportionment with MWD 2008-12-09

A letter from MWD that provides the final accounting for all Nevada unused apportionment stored by MWD for calendar years 2004 through 2008

- CD file name: 2008 MWD Report on SNWA Interstate Storage Account 2009-02-24

DOCUMENTS AND LETTERS SIGNIFICANT TO THE DELIVERY OF AND ACCOUNTING FOR THE USE OF COLORADO RIVER WATER IN CY 2008 (cont.)

LETTERS:

A letter from Reclamation to the Bard Water District terminating water deliveries to Ranch 5 of the Yuma Project, Reservation Division, Indian Unit – Fort Yuma Indian Reservation, Quechan Indian Tribe

- CD file name: 2008 Termination of Water Deliveries to Ranch 5 2008-07-31

A letter from SNWA declaring its intent to create and deliver Tributary Conservation ICS water in 2008

- CD file name: 2008 SNWA Letter of Intent to Create and Deliver ICS 2008-02-20

A letter from Reclamation to SNWA approving its ICS Plan for 2008 and 2009

- CD file name: BR to SWNA Approval of 2008-2009 ICS Plan 2008-12-09

A letter from SNWA indicating that it had received executed copies of the Election to Participate in the Drop 2 Funding Agreement from MWD and CAWCD

- CD file name: 2008 SNWA-BR MWD and CAWCD Drop 2 Funding Participation 2008-05-12

A letter from Reclamation to CVWD detailing the amount of water conserved by the lining of the Coachella Canal and how the conserved water will be allocated

- Interim Determination of Water Conserved by the CCLP 2008-01-30

A letter from Reclamation to CVWD detailing the amount of water conserved by the lining of Reaches 2 and 3 of the All-American Canal and how the conserved water will be allocated

- Interim Determination of Water Conserved by Reaches 2 and 3 AACLP 2009-02-06

A letter from Reclamation to IID validating the amount of water conserved in 2008 through extraordinary measures to repay Inadvertent Overruns incurred in calendar year 2006 and 2007.

- 2008 IID IOPP Validation 2009-06-25

DOCUMENTS AND LETTERS SIGNIFICANT TO THE DELIVERY OF AND ACCOUNTING FOR THE USE OF COLORADO RIVER WATER IN CY 2008 (cont.)

LETTERS:

A letter from Reclamation to Gila Monster Farms validating the amount of water conserved in 2008 through extraordinary measures to repay Inadvertent Overruns incurred in calendar year 2006.

- 2008 GMF IOPP Validation 2009-06-25

A letter from Reclamation to the Fort Mojave Tribe validating the amount of water conserved in 2008 through extraordinary measures in California to repay Inadvertent Overruns incurred in calendar year 2006.

- 2008 CA Fort Mojave Tribe IOPP Validation 2009-06-25

A letter from Reclamation to CVWD validating the amount of water conserved by CVWD in 2008 to payback its CRDWA Exhibit C obligation.

- 2008 BR to CVWD Exh C payback 2009-06-25

MAPS:

Maps showing the locations of the wells and river pumps reported by the USGS, and presented in the supplemental tabulations.

- CD file name: USGS Pump Maps