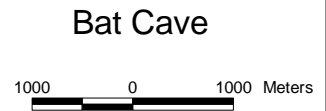
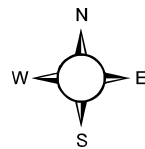
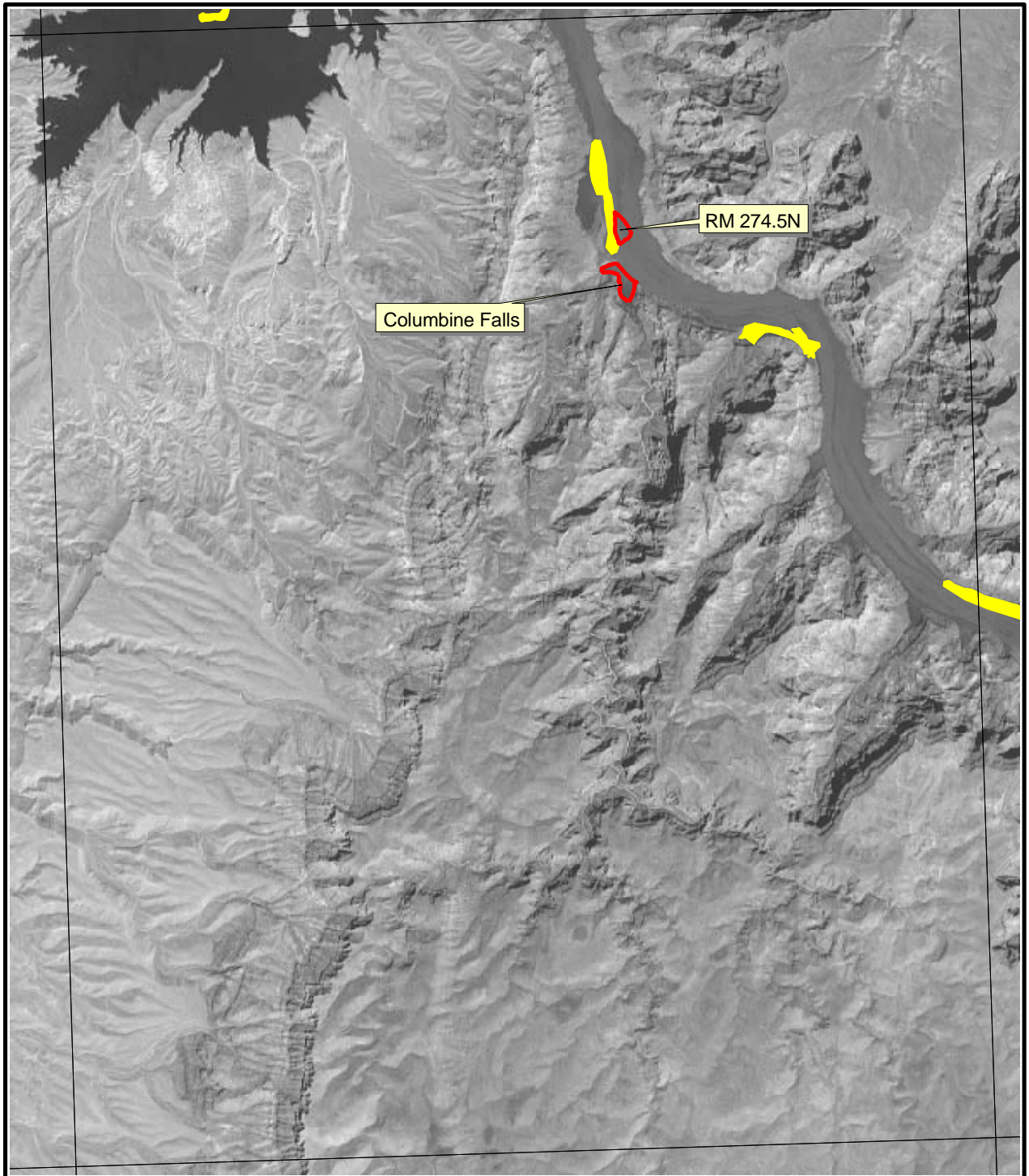





- Historically Occupied
- 2003 Surveyed/Not Occupied
- 2003 Surveyed/Occupied
- 2003 Surveys Discontinued




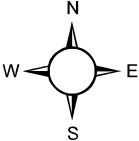


 Project Location
ARIZONA


 Historically Occupied

 2003 Surveyed/Not Occupied

 2003 Surveyed/Occupied



Columbine Falls

 1000 0 1000 Meters