

# **NOAA FISHERIES CLIMATE SCIENCE STRATEGY**

Jason S. Link, Roger Griffis, Shallin Busch (Editors)



U.S. Department of Commerce  
National Oceanic and Atmospheric Administration  
National Marine Fisheries Service

NOAA Technical Memorandum NMFS-F/SPO-155  
August 2015



# NOAA Fisheries Climate Science Strategy

Jason S. Link, Roger Griffis, Shallin Busch (Editors)

## Contributors

Karen Abrams, Jason Baker, Rusty Brainard, Michael Ford,  
Jon Hare, Amber Himes-Cornell, Anne Hollowed, Nate Mantua, Sam McClatchie,  
Michelle McClure, Mark Nelson, Kenric Osgood, Mike Rust, Vincent Saba, Mike Sigler,  
Seth Sykora-Bodie, Valerie Termini, Eric Thunberg, Chris Toole, Robin Waples



U.S. Department of Commerce  
Penny S. Pritzker, Secretary

National Oceanic and Atmospheric Administration  
Kathryn D. Sullivan, Administrator

National Marine Fisheries Service  
Eileen Sobeck, Assistant Administrator for Fisheries

NOAA Technical Memorandum NMFS-F/SPO-155  
August 2015

**Recommended citation:**

Jason S. Link, Roger Griffis, Shallin Busch (Editors). 2015. NOAA Fisheries Climate Science Strategy. U.S. Dept. of Commerce, NOAA Technical Memorandum NMFS-F/SPO-155, 70p.

**Copies of this report may be obtained from:**

NOAA Fisheries, Office of Science and Technology  
National Oceanic and Atmospheric Administration  
1315 East-West Highway, SSMC 3, 12<sup>th</sup> floor  
Silver Spring, MD 20910

**<http://www.st.nmfs.noaa.gov/ecosystems/climate>**

**Or online at:**

<http://spo.nmfs.noaa.gov/tm/>

# TABLE OF CONTENTS

<b>Foreword</b> .....	<b>iv</b>
<b>Executive Summary</b> .....	<b>vi</b>
<b>List of Acronyms</b> .....	<b>ix</b>
<b>Chapter 1: NOAA Fisheries Mission and the Need for Climate-Related Science</b>	<b>1</b>
<b>Chapter 2: Increasing the Production, Delivery, and Use of Climate-Related Information</b> .....	<b>15</b>
Objective 1: Identify appropriate, climate-informed reference points for managing living marine resources (LMRs).	
Objective 2: Identify robust strategies for managing LMRs under changing climate conditions.	
Objective 3: Design adaptive decision processes that can incorporate and respond to changing climate conditions.	
Objective 4: Identify future states of marine and coastal ecosystems, LMRs, and LMR-dependent human communities in a changing climate.	
Objective 5: Identify the mechanisms of climate impacts on ecosystems, LMRs, and LMR-dependent human communities.	
Objective 6: Track trends in ecosystems, LMRs and LMR-dependent human communities and provide early warning of change.	
Objective 7: Build and maintain the science infrastructure needed to fulfill NOAA Fisheries mandates with changing climate conditions.	
<b>Chapter 3: Moving Forward</b> .....	<b>44</b>
<b>Summary</b> .....	<b>48</b>
<b>Glossary</b> .....	<b>49</b>
<b>Tables</b> .....	<b>53</b>
<b>References</b> .....	<b>61</b>

## FOREWORD

For some people, climate change is just a theoretical possibility. But ask fishermen, and many will tell you that climate-related changes in marine and coastal ecosystems are well underway.

Along the Atlantic Coast, many species of commercially valuable species of fish are moving north or deeper to stay within their preferred temperature range. In 2012, lobsters in the Gulf of Maine, spurred by high temperatures, started their summer migration a month early and grew to market size faster than usual. The result was a saturated market and a price collapse for Maine lobstermen. From shrinking Arctic sea ice to west coast droughts, bleaching corals and rising seas, our world is changing and we need to respond to help safeguard these valuable ecosystems and the people who depend on them.

Climate-related changes are happening all along our coasts. These changes could significantly impact people, businesses, communities and the nation. There is much at risk. Many coastal communities depend on fishing and tourism, and climate-related changes are projected to affect jobs, impact economies and disrupt traditional ways of life.

Climate change affects every aspect of the NOAA Fisheries mission from fisheries management to protected species conservation. Climate change and the associated problem of ocean acidification are increasing the vulnerability of fish stocks and protected species, from seals and whales to sea turtles and salmon. These dual stressors are also impacting habitats from coastal watersheds and rivers to estuaries and oceans. And nowhere is the challenge of both using and protecting marine ecosystems so starkly revealed as in the pristine but fast-changing Arctic ecosystems.

The oceans are dynamic systems. That's why striking the right balance between use and protection of marine and coastal resources has always been a complicated process, whether its setting fishing levels, reducing by-catch, recovering endangered species, or considering permits for oil and gas exploration. Incorporating climate change into decision-making makes these efforts more challenging than ever before. Increased information, tools and action are essential to meeting these challenges.

This NOAA Fisheries Climate Science Strategy (Strategy) was developed to meet the growing demand for information to better prepare for and respond to climate-related impacts on the nation's living marine resources and resource-dependent communities. The Strategy is part of a proactive approach to increase the production, delivery and use of climate-related information to fulfill NOAA Fisheries mandates in a changing climate. Implementing this Strategy will help reduce impacts and increase the resilience of our valuable living marine resources, and the people, businesses and communities that depend on them.



**Eileen Sobeck, Assistant Administrator**  
National Marine Fisheries Service

## **Acknowledgements**

This Strategy was produced based on significant input from the Contributors and many other colleagues. It benefited from input received during internal NOAA review and a public review period. The Office of Science and Technology Communications Team provided outstanding support in development of the Strategy. Special thanks go to NMFS Leadership for their vision, commitment and support for this Strategy and a climate-ready NOAA Fisheries Service.

For more information please visit

<http://www.st.nmfs.noaa.gov/>

or contact NOAA Fisheries Office of Science and Technology

## EXECUTIVE SUMMARY

Oceans and coasts are among the nation's most treasured and valuable resources. These resources are at risk from a variety of impacts including a changing climate. Climate-related changes in ocean and coastal ecosystems are impacting the nation's living marine resources (LMRs), the important services they provide, and the many people, businesses, communities and economies that depend on them. These changes increase the information and actions necessary to fulfill the National Marine Fisheries Service (NOAA Fisheries) mission to sustain LMRs and their ecosystems for the benefit of the nation. To fulfill this mission, NOAA Fisheries needs more information on the impacts of climate changes on LMRs, and science-based approaches for sustaining LMRs and resource-dependent communities in a changing climate.

The goal of the NOAA Fisheries Climate Science Strategy ('Strategy') is to increase the production, delivery, and use of the climate-related information required to fulfill NOAA Fisheries mandates. Although the information needed to understand, prepare for, and respond to climate change impacts on LMRs is diverse, this Strategy identifies seven common objectives to meet the science information requirements needed to fulfill NOAA Fisheries stewardship mandates in a changing climate. These are:

**Objective 1:** Identify appropriate, climate-informed reference points for managing LMRs.

**Objective 2:** Identify robust strategies for managing LMRs under changing climate conditions.

**Objective 3:** Design adaptive decision processes that can incorporate and respond to changing climate conditions.

**Objective 4:** Identify future states of marine, coastal, and freshwater ecosystems, LMRs, and LMR-dependent human communities in a changing climate.

**Objective 5:** Identify the mechanisms of climate impacts on ecosystems, LMRs, and LMR-dependent human communities.

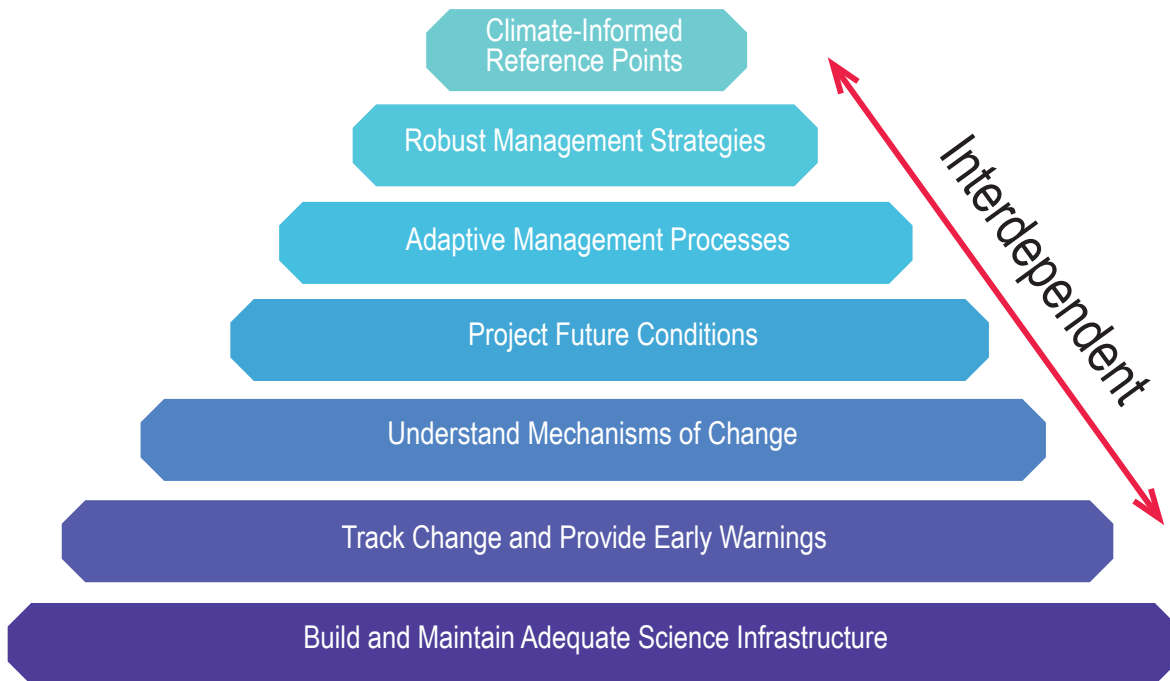
**Objective 6:** Track trends in ecosystems, LMRs, and LMR-dependent human communities and provide early warning of change.

**Objective 7:** Build and maintain the science infrastructure needed to fulfill NOAA Fisheries mandates under changing climate conditions.

This Strategy provides a nationally consistent blue-print to guide efforts by NOAA Fisheries and partners that address the seven science objectives. NOAA Fisheries will work with partners to develop Regional Action Plans (RAPs) to identify strengths, weaknesses, priorities, and actions to implement the Strategy in each Region over the next 3-5 years. The Strategy is designed to be customized and implemented through RAPs that focus on building regional capacity and partnerships to address the seven objectives listed above.



## Climate Science Strategy Objectives



The Strategy is organized around the seven priority science objectives (see Chapter 2). The Strategy also identifies a series of immediate and near-term actions that address urgent common challenges across the objectives and that would produce high and immediate returns on investment across multiple regions and mandates (see Chapter 3).

The immediate actions are:

1. Conduct climate vulnerability analyses in each region for all LMRs to better understand what is at risk and why.
2. Establish and strengthen ecosystem indicators and status reports in all regions to better track, prepare for and respond to climate-driven changes.
3. Develop capacity to conduct management strategy evaluations regarding climate change impacts on management targets, priorities, and goals.

The recommended near-term actions are:

1. Strengthen climate-related science capacity regionally and nationally to fulfill NOAA Fisheries information requirements in a changing climate.
2. Develop RAPs to customize and execute this Strategy in each region over the next 3 to 5 years, through NOAA Fisheries regional Science Centers, Regional Offices and many partners.
3. Ensure that adequate resources are dedicated to climate-related, process-oriented research to better understand how climate impacts LMRs, how to reduce impacts and how to increase resilience of LMRs and LMR-dependent communities.
4. Establish standard, climate-smart terms of reference to apply to all of NOAA Fisheries LMR management, environmental compliance requirements, and other processes that cross multiple mandates and core policy areas.

Implementation of the Strategy over the next 3 to 5 years is crucial for the effective fulfillment of the NOAA Fisheries mission and mandates in a changing climate. By implementing these recommendations with our science and management partners (e.g. federal, state and tribal agencies, academia, fishery management councils, commissions, businesses, communities and others), NOAA Fisheries will increase the production, delivery, and use of climate-related information in LMR management, and thereby reduce impacts and increase resilience of LMRs and the communities that depend on them.

## LIST OF ACRONYMS

BRP – Biological Reference Point

CWA – Clean Water Act

EBM – Ecosystem-Based Management

ESA – Endangered Species Act

ESR – Ecosystem Status Report

FATE - Fisheries and the Environment

FMP – Fisheries Management Plan

FTE – Full-Time Employee

FWCA – Fish and Wildlife Coordination Act

IEA – Integrated Ecosystem Assessment

LME – Large Marine Ecosystem

LMR – Living Marine Resource

MMPA – Marine Mammal Protection Act

MSE – Management Strategy Evaluation

MSA – Magnuson-Stevens Fishery Conservation and Management Act

NEPA – National Environmental Policy Act

NOAA Fisheries – National Marine Fisheries Service

NOAA - National Oceanic and Atmospheric Administration

RAP – Regional Action Plan



# CHAPTER 1

## NOAA Fisheries Mission and the Need for Climate-Related Science

The climate and oceans are changing, and these changes are already affecting the nation's valuable marine, estuarine, and diadromous living resources (hereafter termed living marine resources, or LMRs<sup>1</sup>) and their habitats. Changes in the climate system (including climatic changes and other impacts such as ocean acidification and alterations of aquatic systems; hereafter referred to as climate change) are affecting the services LMRs provide and the many people, businesses, and communities that depend on them (e.g., Osgood 2008; Doney et al. 2012; Melillo et al. 2014).

Even at current concentrations of atmospheric greenhouse gases, these changes are affecting the products, services, uses, and benefits people derive from these ecosystems. And these impacts are expected to continue for centuries and even increase with continued changes in the planet's climate system (Intergovernmental Panel on Climate Change 2013; Melillo et al. 2014). These impacts will affect NOAA's LMR management efforts and LMR-dependent sectors at local, state, regional, national, and international levels.

Given the scale of U.S. dependence on LMRs and the scope and pace of climate-related changes in marine and coastal ecosystems, immediate action is needed to better understand, prepare for, and respond to these changes in ways that reduce impacts and increase resilience of LMRs for current and future generations (Osgood 2008; Intergovernmental Panel on Climate Change 2013; Melillo et al. 2014; Pinsky and Mantua 2014). Meeting this need requires increased production, delivery, and use of science-based information related to climate change in nearly all aspects of LMR stewardship. And addressing these information needs is critical to fulfilling the NOAA Fisheries mission to sustain LMRs and their ecosystems for the benefit of the nation through science-based conservation and management.

NOAA Fisheries and other resource managers face increasingly complex challenges in fulfilling resource stewardship mandates in a changing climate. This NOAA Fisheries Climate Science Strategy (Strategy) outlines a clear path for NOAA Fisheries and partners to deliver the science enterprise, information and tools needed for climate-ready decision-making. The Strategy identifies seven key objectives that, if met, will provide the climate-related information and tools needed to fulfill NOAA Fisheries mission in a changing climate.

---

<sup>1</sup> Living marine resources are defined as species under NOAA Fisheries responsibility, including species that spend part of their life cycle in estuarine or freshwater, such as diadromous fishes. These include federally-managed fish and shellfish, protected marine mammals and other species listed as threatened or endangered.

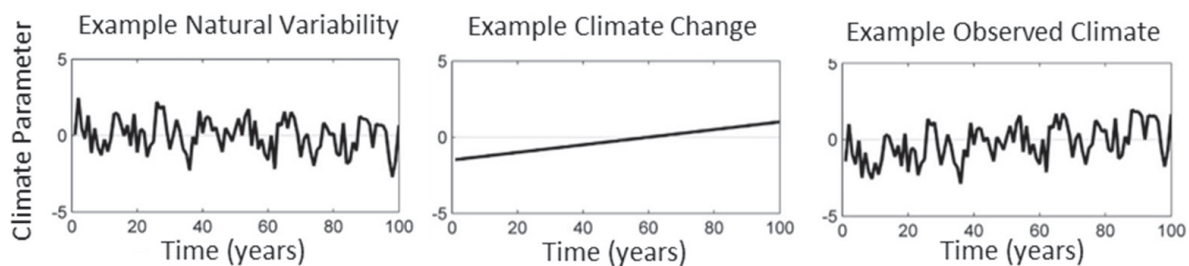
## What is climate change?

### The difference between natural variability and multi-decadal climate change

Natural variability is an inherent part of the Earth's climate system, and this variability acts over a range of time and space scales. At shorter time scales, this natural variability is termed weather: one day it is raining and the next day it is sunny. Seasonal natural variability occurs at the scales of months and is pronounced across temperate and boreal latitudes, where temperatures can vary by 10 to 50 °C and precipitation can vary from rain to snow. Climate also varies naturally on the inter-annual scale: one winter is mild and the next is harsh. Furthermore, there is natural climate variability at the scale of decades: El Niño Southern Oscillation (ENSO) represents multi-year variability in the surface temperature of the tropical eastern Pacific Ocean. ENSO variability has global effects; for example, it causes changes in rainfall patterns across parts of North America, Africa, and the Indian subcontinent. Other forms of inter-annual and decadal natural climate variability include the Pacific Decadal Oscillation, the North Pacific Gyre Oscillation, and the North Atlantic Oscillation, each with known basin-scale effects on weather, pelagic food webs, and fisheries.

All of these forms of natural variability in the Earth's climate system act simultaneously and in association with ongoing climate change, which is defined as a long-term change in the climate system (>50 years). Recent climate change involves global warming, ocean acidification, and changes in precipitation, winds, and ocean circulation patterns. These long-term changes will affect the average climate, but they may also change the frequency and magnitude of the processes responsible for natural variability, such as ENSO events.

The climate we experience is a combination of natural variability and long-term change. Climate change is not detectable day-to-day or year-to-year. It is detectable in the long-term trends in daily and annual temperatures. These long-term changes in the Earth's climate system pose challenges for the management of LMRs. Information on the impacts of both climate variability and change on LMRs is very important to developing effective management approaches across multiple time scales.



**Figure 1: Illustrations of short-term variability (left) combining with long term change (center) in climate observations (right).**

## Impacts of a Changing Climate on Marine and Coastal Ecosystems

The impacts of both climate variability and change on the physical, chemical, biological, and even social components of marine, coastal, and freshwater ecosystems are well documented (e.g., Doney et al. 2012; Griffis and Howard 2013; Intergovernmental Panel on Climate Change 2013; Melillo et al. 2014). Some of the major observed and expected changes to the physical and chemical characteristics of marine and coastal environments are illustrated in Figure 2 and include the following (Doney et al. 2012; Intergovernmental Panel on Climate Change 2013; Melillo et al. 2014):

- Warmer ocean temperature
- Reduced sea-ice thickness and extent
- Altered storm tracks and intensity
- Precipitation changes
- Altered freshwater input
- Sea level rise
- Reduced ocean pH (i.e., acidification)
- Reduced dissolved oxygen

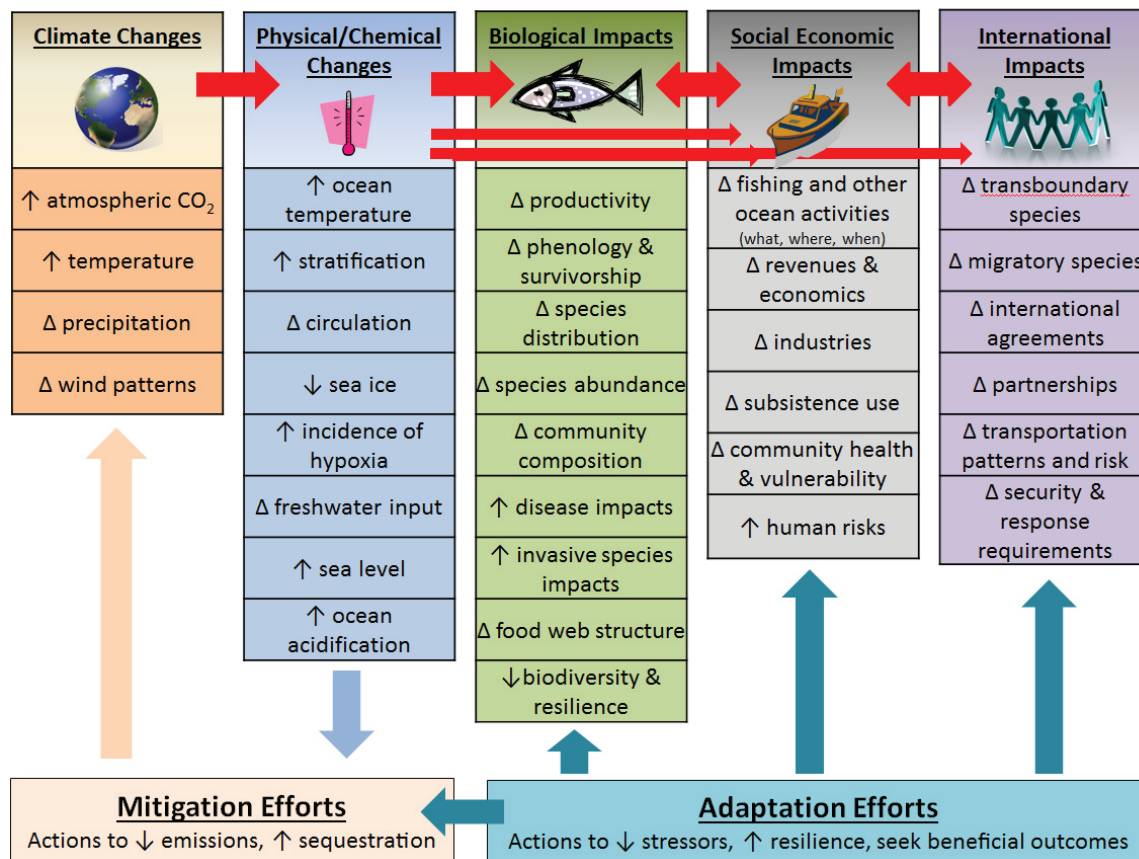


Figure 2: Schematic diagram illustrating current and/or projected impacts of climate changes on major components of marine and coastal ecosystems.

These changes can result in a variety of altered conditions, including the following (Rykaczewski and Dunne 2010; Doney et al. 2012; Intergovernmental Panel on Climate Change 2013; Melillo et al. 2014):

- Salinity
- Ocean circulation
- Mixed layer depth
- Upper-ocean stratification
- Wind mixing
- Intensity of upwelling and downwelling
- Ecosystem connectivity
- Nutrient availability
- Structural habitat loss, alteration, and degradation

These changes to the marine and coastal physical and chemical environments are known to be occurring, and their cascading effects on species, habitats, and biodiversity in these systems are expected to increase with continued changes in the climate system (Figure 2). The variety of observed or expected effects include changes to ecosystem productivity (Polovina et al. 2008; Polovina et al. 2011; Hollowed et al. 2013); the timing and magnitude of phytoplankton blooms (Steinacher et al. 2010; Behrenfeld 2011; Sigler et al. 2013); thermal tolerance and habitat volumes available for LMRs (Baker et al. 2007; Nye et al. 2009; Baker et al. 2012; Hazen et al. 2013; Pinsky et al. 2013; Lynch et al. 2015); vital rates (reproductive rate, emigration, immigration) and life history characteristics (Hare et al. 2010; Saba et al. 2012). These effects can have direct or indirect impacts on species' survival, abundance, distribution, fecundity, reproductive success, and function in an ecosystem, and thereby modify the provision of ecosystem goods and services (Ruckelshaus et al. 2013). These factors may influence the frequency, intensity, and duration of interactions among species, species phenology, distributions and abundance, and the dynamics of invasive and endangered species. We are already witnessing species range and distribution shifts (Nye et al. 2009; Cheung et al. 2010; Kotwicki and Lauth 2013; Pinsky et al. 2013), and these shifts are expected to continue, posing challenges and perhaps opportunities for resident and shifting species as they enter or leave an ecosystem.

Climate-related alterations to freshwater and estuarine systems—such as changes in the amount, location, and timing of precipitation or changes to air or sea temperatures—can affect riverine-dependent diadromous species and the many species that use estuarine habitats (Intergovernmental Panel on Climate Change 2013; Intergovernmental Panel on Climate Change 2014; Melillo et al. 2014). For example, along the U.S. West Coast, the combination of more extreme events coupled with higher temperatures causes more precipitation to fall as rain rather than as snow, which significantly changes habitat conditions for multiple Pacific salmon and steelhead populations that are managed as commercial and recreational fisheries and also as threatened and endangered species. These impacts (Mote et al. 2014) include:

- More flooding and scouring flows in winter (increasing sedimentation, erosion, and potentially washing out deposited eggs).
- Earlier spring freshet (likely to change juvenile migration timing with potential mismatch to estuarine and ocean conditions).
- Higher water temperatures and lower stream flows in summer and fall (reducing juvenile rearing habitat quality and quantity, potentially increasing predation and disease transmission).
- More frequent exceedance of lethal/sublethal temperature thresholds for juveniles and adults.



- Modified riparian vegetation (contributing to higher stream temperatures) by factors including drought, greater fire frequency, and insect infestation.

In many coastal areas, transformation of shorelines (e.g. erosion, or development) and estuarine habitats by sea level rise, more frequent storms and coastal inundation can also impact coastal-dependent species. Threats also arise for corals and shellfish species such as shrimp, crabs, lobster, clams, and oysters whose calcareous (composed of calcium carbonate) shells or exoskeletons are highly susceptible to ocean acidification (Cooley and Doney 2009; Bednaršek et al. 2014). These fisheries currently comprise about two-thirds of U.S. marine aquaculture production<sup>2</sup> and more than half of U.S. domestic fishery landings by value (National Marine Fisheries Service 2014) and provide habitat for many species (e.g., coral and oyster reefs).

Climate-related changes will also interact with other stressors, such as pollution, eutrophication, fishing, bycatch, and changes in human use of these systems (e.g., rapid increase in human use of the Arctic) to affect LMRs. Some examples of climate-related impacts on LMRs and the people who depend on them are included as case studies throughout this document. In some circumstances, reducing other stressors that are under local or regional control (e.g., fishing impacts and pollution) may help increase the persistence of species sensitive to climate change, by increasing overall resilience and reducing synergistic impacts between climate-related and non-climate-related stressors.

Climate-related changes in physical and chemical conditions are expected to have a variety of impacts on LMRs across a range of spatial and temporal scales (Stock et al. 2011; Melillo et al. 2014). To assume that the effects of climate change will be uniform and consistent across species and ecosystems is imprudent and inconsistent with our scientific understanding. Several studies (e.g., Mueter et al. 2011; Howella and Austerb 2012; Wilderbuer et al. 2013) suggest that, in any one region, some species will experience improving environmental conditions that may result in increased available habitat and increased species productivity, while other species will experience the opposite and perhaps decline in abundance. Furthermore, the sensitivity of species to climate change and the nature of the effect may vary with life stage. Understanding how climate change will affect wide-ranging species is challenging, as they may experience positive effects of climate change in one habitat during one life stage and negative effects in another distantly located habitat in another life stage. Because not all climate changes will affect LMR species in the same way, there is an urgent need for careful evaluation of the impacts of climate as well as non-climate stressors in the design, implementation, and evaluation of LMR management efforts. For example, changes in species abundance, productivity, distribution, and diversity due to a changing environment may require changes to the biological reference points and socio-economic benchmarks used in LMR management.

The combined physical, chemical, and biological effects of climate change on LMRs will modify the products and services people derive from marine ecosystems, including food, jobs, recreation, medicinal products, aesthetics, tourism, regional culture and sense of place, and even health benefits (Ruckelshaus et al. 2013). For example, the species available for harvest or culture in a given region could change in space and time, requiring fishermen to develop new harvesting strategies (e.g., switching their target species and gear types) or developing strategies for reducing bycatch of species new to their fishing grounds (Heenan et al. 2013). Shifts

---

<sup>2</sup> [http://www.nmfs.noaa.gov/aquaculture/faqs/faq\\_aq\\_101.html#11whatkinds](http://www.nmfs.noaa.gov/aquaculture/faqs/faq_aq_101.html#11whatkinds)

in the distribution and/or abundance of species may affect where fishermen target fish, the location of fishing industries, working waterfronts, supply chains, and the social and economic dynamics of LMR-dependent coastal communities, cultures, and industries. Changes in target species and fishing methods will likely pose challenges for shore-side support services from ports to processing plants, which will also be significantly influenced by climate-related factors such as sea level rise, coastal storms, and inundation (i.e., flooding). Shifts in aquaculture practices may be needed, including rethinking what species may be best suited to meet societal demands under changing climate and ocean conditions. These and many other climate-related effects will impact NOAA Fisheries stewardship of LMRs (e.g., for ESA-related issues see special section on climate change and NOAA Fisheries ESA work in December 2013 issue of *Conservation Biology*: Boughton and Pike 2013; Brainard et al. 2013; Busch et al. 2013; Gregory et al. 2013; Jorgensen et al. 2013; McClure et al. 2013; Seney et al. 2013; Snover et al. 2013; Wainwright and Weitkamp 2013; Walters et al. 2013).

## **NOAA Fisheries Stewardship Mandates**

NOAA Fisheries is responsible for the stewardship of the nation's LMRs and their habitats, interactions, and ecosystems. As discussed above, climate change is expected to have a variety of impacts on marine, coastal, and freshwater ecosystems, LMRs, and their uses, which will affect both the information and the actions required to fulfill this mission. NOAA Fisheries main mandates are derived from numerous statutes, including the Magnuson-Stevens Fishery Conservation and Management Act (MSA), Fish and Wildlife Coordination Act (FWCA), Endangered Species Act (ESA), Marine Mammal Protection Act (MMPA), National Aquaculture Act, Coral Reef Conservation Act, Federal Power Act, Clean Water Act (CWA), and the National Environmental Policy Act (NEPA) (Table 1).

- Under the MSA, NOAA Fisheries assesses and predicts the past, current, and future status of fishery stocks and harvest rates; evaluates the implications of proposed catch on the sustainability of marine resources; and identifies, protects, and restores essential fish habitat. This information is used to maintain, conserve, and rebuild fishery resources. A primary objective of the MSA is to use the best scientific information available to optimize yield on a continuing basis.
- The MMPA directs NOAA Fisheries to assess marine mammal stocks, reduce fisheries bycatch of marine mammals, protect key habitats, and conduct stranding response and other activities. This includes the estimation of abundance, distribution, and mortality.
- Under the ESA, NOAA Fisheries works to identify, protect, and recover threatened and endangered species, including marine mammals, sea turtles, marine and anadromous fishes, marine invertebrates, and marine plants, and their critical habitat.
- Under the National Aquaculture Act, NOAA Fisheries provides for the development of aquaculture in the United States. Under the Coral Reef Conservation Act, NOAA Fisheries facilitates local action strategies for preserving coral reef habitat.
- Under NEPA and the National Ocean Policy, NOAA Fisheries evaluates environmental and socio-economic impacts of a variety of federally permitted activities in marine and coastal systems. This places particular emphasis on the evaluation of cumulative impacts to LMRs and their habitats, connections, and ecosystems. Under the FWCA as well as the CWA, Rivers and Harbors Act, and Water Resources Reform Development Act NOAA Fisheries consults with other federal agencies providing habitat conservation recommendations on their proposed actions, such as issuing permits for discharges to waterways or coastal infrastructure projects that could affect fish habitats.
- Under the Federal Power Act, NOAA Fisheries prescribes fish passage requirements for non-federal

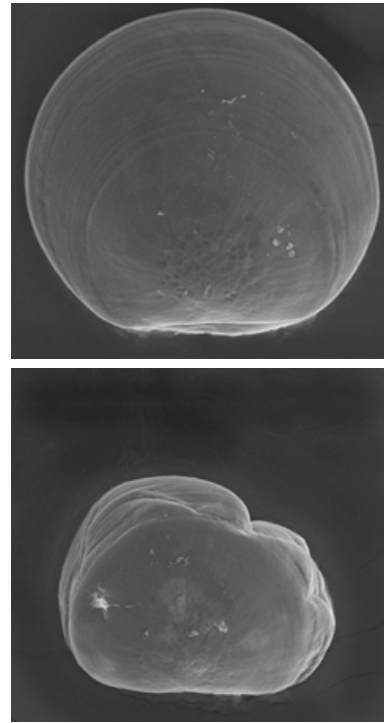
hydropower project licenses that last for 30 to-50 years.

In designing management approaches to meet the LMR objectives listed above, NOAA Fisheries is required under many of the mandates (and others) to consider how these decisions may affect human sys-

## Social and economic impacts of a changing climate on ocean based industries

### Pacific Northwest oyster hatcheries and ocean acidification

The first known case of an industry being directly affected by ocean acidification occurred in the Pacific Northwest's oyster hatcheries. Ocean acidification along the U.S. West Coast has been well documented, including its effects on aragonite saturation state of upwelled waters (a proxy used to estimate calcification rates) (Feely et al. 2008). In 2006, the mortality rate of cultured larvae of Pacific oyster (*Crassostrea pacifica*) at Oregon's Whiskey Creek shellfish hatchery was 80 percent greater than usual (Kelly et al. 2013). High larval mortality rates persisted at the Whiskey Creek hatchery and occurred at other hatcheries in Washington State for a few years. Wild recruitment of Pacific oysters was below levels needed to support commercial harvest in Washington's Willapa Bay during the same time period (Dumbauld et al. 2011). Hatchery managers and scientists explored a variety of possibilities for the high oyster larvae mortality, but turned their attention to ocean acidification when all of the typical causes of mortality could be ruled out. NOAA and other scientists collaborated with Pacific Northwest hatcheries to monitor the carbon chemistry of the seawater used to grow oysters and explored the link between ocean carbon chemistry and larval mortality in the hatchery. At the Whiskey Creek Hatchery, scientists found that larval production was directly correlated with aragonite saturation state of the seawater in which larval oysters were spawned and reared for the first 48 hours of life (Barton et al. 2012). Using data from carbon chemistry monitoring equipment, this hatchery and others have since successfully adapted their practices to mitigate the effects of ocean acidification on production. For example, they can now avoid drawing low pH water into the hatchery during spawning events. The shellfish industry, in collaboration with NOAA and other scientists, is exploring other adaptation practices for hatcheries, and the scientific community is exploring the feasibility of adaptation practices that could support oyster harvest from wild recruitment. Both are necessary to support the viability of the Pacific Northwest oyster industry.



**Larvae of Pacific oysters at 4 days after hatching when reared in pH 8.0 (top) and pH 7.4 (bottom) seawater. Credit: E. Brunner and G. Waldbusser, Oregon State University.**

tems, including coastal communities and economic and social impacts. Fulfilling these mandates requires a range of science-based information and services to provide the foundation for management action. NOAA Fisheries responsibilities under the MSA, ESA, MMPA, NEPA, and other mandates include a set of common science activities such as documenting, assessing, and projecting past, present, and future abundance, distribution, production, mortality, and utilization of LMRs and their habitats. Briefly, this sequence can be described as follows (Figure 3):



**Figure 3: General science framework used by NOAA Fisheries to provide information and advice for use in LMR management.**

- Providing observational and experimental data to build an understanding of LMR abundance and dynamics given past and current environmental and socio-economic conditions.
- Modeling and synthesizing data to understand patterns in ecosystem and LMR population dynamics and make projections about how they will respond to action.
- Reviewing model outputs to validate the science.
- Providing management advice, typically in the form of biological reference points, such as biomass at maximum sustainable yield, fisheries harvest recommendations, habitat and protected species conservation measures, potential biological removal, population viability or similar quantities.

Up-to-date science is essential for effective LMR management, and it becomes even more important as climate change alters the historical characteristics of marine ecosystems. Currently, NMFS lacks key scientific information and tools needed to inform LMR management decisions in a changing climate.

With changing climate and LMR conditions, there are a variety of increasing information needs to inform and fulfill NOAA Fisheries LMR stewardship mandates (Osgood 2008). Some of the major climate-related information needs (Figure 3) for effective LMR management in a changing climate are:

- **WHAT IS CHANGING?** Standardized data on past and current changes in marine, coastal, and freshwater ecosystems.
- **WHY IS IT CHANGING?** Studies to develop a mechanistic understanding of contemporary and historical climate impacts on LMRs.
- **WHAT IS AT RISK?** Assimilation and synthesis of climate information into models used to determine stock and ecosystem status and monitoring systems.
- **WHAT WILL CONDITIONS BE IN THE FUTURE?** Future projections of the state and expected human use of marine, coastal, and freshwater ecosystems (based on contemporary and historical climate sensitivities).
- **HOW TO RESPOND?** Evaluation of alternative management strategies to reduce current and future impacts of climate change on LMRs, habitats, the goods and services they provide, and the communities that depend on them.

## Endangered species and habitats in a changing climate

### Coral habitat sensitivity to climate change

In 2006, two Atlantic species of coral were listed under the ESA. In 2009, NOAA Fisheries was petitioned to list 83 species of coral as threatened or endangered under the ESA based on widespread degradation of coral reefs over the past three decades (Gardner et al. 2003; Pandolfi et al. 2003; De'ath et al. 2012) and on predicted declines in available habitat for the coral species (Hoegh-Guldberg et al. 2007; Carpenter et al. 2008), citing anthropogenic climate change and ocean acidification as the lead factors. An extensive NOAA Fisheries literature review and analyses of the status and extinction risk of the 83 candidate coral species (Brainard et al. 2011) considered ocean warming, disease, and ocean acidification to be the most influential threats in posing extinction risks to coral species. Over the past three decades there have been numerous widespread mass coral bleaching and mortality events around the globe associated with anomalously warm water temperatures (Eakin et al. 2009; Burke et al. 2011), and it is expected that these coral bleaching events will continue, likely with increased frequency and severity, with ocean warming driven by climate change (Hoegh-Guldberg et al. 2007; Eakin et al. 2010; Hoeke et al. 2011). In addition to mortality caused directly by the bleaching, incidences of coral disease increase as a function of rising temperature (Bruno and Selig 2007; Harvell et al. 2007). Corals and coral reefs are also considered to be among the most vulnerable taxa and ecosystem types to the impacts of ocean acidification, as numerous experiments have demonstrated significantly reduced ability of reef-building corals and crustose coralline algae (red algae in the order Corallinales) to calcify and create their calcium carbonate skeletons (reefs) under low pH and low aragonite and calcite saturation states (Langdon and Atkinson 2005; Hoegh-Guldberg et al. 2007; Kuffner et al. 2007). Finally, additional studies have indicated that thermal and acidification stresses often act synergistically, resulting in even greater impacts to corals and coral reefs (Anthony et al. 2008).

In August 2014, NOAA Fisheries made a final decision to list 20 of the 83 petitioned coral species as threatened, this listing includes all major reef-building species in the Atlantic and Caribbean with climate change being one of the primary drivers for listing (Federal Rule [Docket No. 0911231415-4826-04]). This ESA decision-making process has demonstrated the need for both field and experimental time-series observations, and projections of climate and ocean changes and the resulting ecosystem impacts of those changes. Improvements in our ability to quantify the environmental factors, their variability, and their influence on survival and reproduction of living marine resources are essential for ESA decision-making.



Monitoring of coral reefs. Credit: NOAA

Meeting these changing science requirements will be challenging given the scale and scope of NOAA Fisheries mission and expected climate-related impacts on marine, coastal, and freshwater ecosystems. For example, NOAA Fisheries is responsible for providing a range of science-based assessments and management advice for the stewardship of more than 449 regulated stocks/stock complexes,<sup>3</sup> 102 threatened or endangered species, and 117 marine mammal species, and their habitats.<sup>4</sup> NOAA Fisheries provides science-based information to conduct more than 2,000 habitat restoration projects nationwide<sup>5</sup> and protect hundreds of thousands of square kilometers of habitat. NOAA Fisheries also oversees research and siting for a growing number of sustainable marine aquaculture activities, including some designed to mitigate for climate change. To meet NEPA requirements, in 2012 alone, NOAA Fisheries conducted 106 environmental assessments, wrote 12 environmental impact statements, and issued hundreds of categorical exclusions.<sup>6</sup> Under the MSA, in 2011, NOAA Fisheries provided conservation recommendations to federal and state agencies on more than 4,500 individual projects.

Overall, NOAA Fisheries has direct stewardship responsibilities for LMRs in 11 Large Marine Ecosystems, comprising 16.5 million km<sup>2</sup>, (an area 1.7 times the land area of the continental United States and roughly 5 percent of the world ocean's surface area<sup>7</sup>) plus other stewardship responsibilities for the ESA-listed species that occur throughout the world's Large Marine Ecosystems. NOAA Fisheries also has stewardship responsibilities on the high seas and for operation of U.S. fishing vessels in other countries' EEZs through international treaties and regional fishery management organizations.

Due to complex trophic interactions of marine ecosystems, climate change is expected to affect the distribution, abundance and composition of many coastal and marine species. These changes could have significant effects on species conservation and management, as well as human uses of these resources.

Effective stewardship of LMRs will require information related to climate change for use in the design and execution of a broad range of management actions (Figure 4). In addition, effective stewardship will require an understanding of how fisheries, ocean industries (e.g., shipping, military activities, and shoreline development), and other human activities might modify their use of LMRs in the face of projected and actual climate-related changes in marine, coastal, and freshwater ecosystems over time.

---

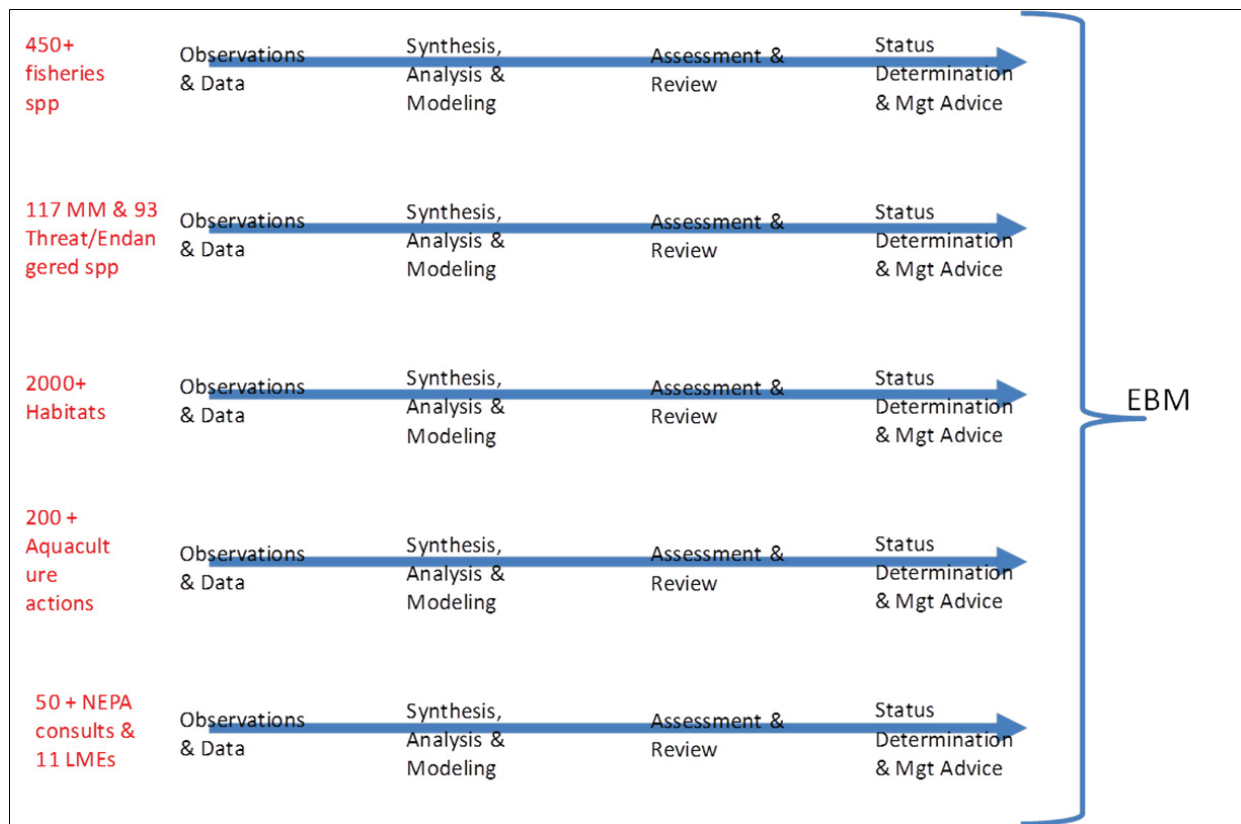
<sup>3</sup> <https://www.st.nmfs.noaa.gov/sisPortal/sisPortalMain.jsp>

<sup>4</sup> <http://www.nmfs.noaa.gov/pr/species/index.htm>

<sup>5</sup> <http://www.habitat.noaa.gov/restoration/restorationatlas/index.html>

<sup>6</sup> Categorical exclusion refers to a category of actions that do not individually or cumulatively have a significant effect on the human environment and for which, therefore, neither an environmental assessment nor an environmental impact statement is required.

<sup>7</sup> [http://www.lme.noaa.gov/index.php?option=com\\_content&view=category&id=41&Itemid=53](http://www.lme.noaa.gov/index.php?option=com_content&view=category&id=41&Itemid=53)



**Figure 4: NOAA Fisheries provides science information and management advice to fulfill multiple stewardship mandates including fisheries management, protected species conservation, habitat conservation, aquaculture and others. Ecosystem-based management approaches (EBM) are used to improve consideration of cumulative effects and trade-offs.**

NOAA has adopted a policy of ecosystem-based management (EBM) to more efficiently and effectively fulfill its mandates and promote consideration of cumulative effects, and of trade-offs across various management regimes and human uses, as well as the impacts of these management decisions on human systems (Executive Order 13547 of July 19th 2010; Ocean Research Advisory Panel 2013).

EBM is a national priority and leading business practice within NOAA Fisheries, NOAA, U.S. natural resource management agencies, and many leading international natural resource management organizations (MacLeod and Leslie 2009; Executive Order 13547 of July 19th 2010; National Ocean Council 2013; Ocean Research Advisory Panel 2013; U.S. Office of Science and Technology Policy 2013). It is an idea that has existed for decades in the literature (Slocombe 1993), but has only recently begun to be widely implemented. Within each of NOAA Fisheries mandates, the need and benefits of considering a broad range of factors that can influence LMRs is clear. But even more so, across all of these mandates, the need to implement EBM is apparent; otherwise, NOAA Fisheries will be unable to consider the full range of trade-offs, interactions, and cumulative effects required across all of the mandates under a changing climate (MacLeod and Leslie 2009; Link 2010). Climate and ocean change impacts are a critical part of this discussion, and adopting common approaches to climate change science that are applicable across all NOAA Fisheries LMR mandates is an important area to leverage resources and gain efficiencies via this Strategy.

Without adequately incorporating climate change, NOAA Fisheries conservation and management efforts are likely to be ineffective, produce negative results, or miss opportunities. Any of these could have a variety of environmental, social, economic, cultural, and legal consequences. For example, the commercial and recreational fishing industry is important to the U.S. economy (added \$199 billion to the U.S. economy in 2012) and to social systems (generated 1.7 million jobs in 2012) (NMFS 2014). The recreational fishing industry alone contributes \$56 billion a year to the U.S. economy and 364,000 jobs (NMFS 2014). Furthermore, subsistence and personal-use fisheries are known to be vital to families and households across the nation, including tribal communities. Beyond fisheries, healthy marine ecosystems help protect coastal communities from storm waves and tsunamis, support the existence of imperiled and charismatic species, regulate climate, and mitigate climate change effects (e.g., carbon sequestration and storage by coastal habitats).

Although the value of these ecosystem services is challenging to quantify, they are vital natural capital and impossible to replace (Ruckelshaus et al. 2013). The social, cultural, and economic consequences are vast. Given the pace and scope of expected climate impacts on marine, coastal, and freshwater ecosystems, the ability to understand, plan for, and respond to climate impacts on the nation's valuable LMRs and the people that depend on them is fundamental to fulfilling NOAA Fisheries mandates in a changing climate.

## **The Need for a NOAA Fisheries Climate Science Strategy**

The demand for more information related to climate change is high and increasing among LMR managers, scientists, users and stakeholders. Many other sectors are already taking significant action to better understand, plan for, and respond to climate impacts (e.g., defense, transportation, land management, water management, public health, and others). This includes development of strategies/plans to advance climate-related science by other natural resource agencies such as the U.S. Forest Service (Solomon et al. 2009), U.S. Fish and Wildlife Service (U.S. Fish and Wildlife Service 2010), National Park Service (National Park Service 2010; National Park Service 2012), U.S. Department of Agriculture (USDA 2011), U.S. Geological Survey (Burkett et al. 2013), and the U.S. Army Corps Of Engineers (USACE 2014).

This Strategy responds to increasing demands for information and clear directives for action by NOAA Fisheries and other federal agencies. For example, in 2012 NOAA and other federal, state and tribal government agency partners released the National Fish, Wildlife and Plants Climate Adaptation Strategy to help safeguard the nation's valuable natural resources and the communities that depend on them in a changing climate (NFWPAS 2012). In June 2013, President Obama unveiled a Climate Action Plan to reduce carbon pollution, create more clean energy sources, and minimize the impacts of climate change on the nation. Executive Order 13653 directed federal agencies to take action to implement the Climate Action Plan including updating agency Climate Adaptation Plans and identification of specific actions to increase resilience of the nation's valuable natural resources (Priority Agenda to Enhance the Climate Resilience of America's Natural Resources (2014)). The NOAA Fisheries strategy responds to these and other direct calls for action to better understand, prepare for and respond to climate-related impacts on NOAA Fisheries mission.

Increasing the production, delivery, and use of climate-related information in fulfilling NOAA Fisheries stewardship responsibilities is a significant challenge. Fortunately, some quantitative tools needed to incorpo-

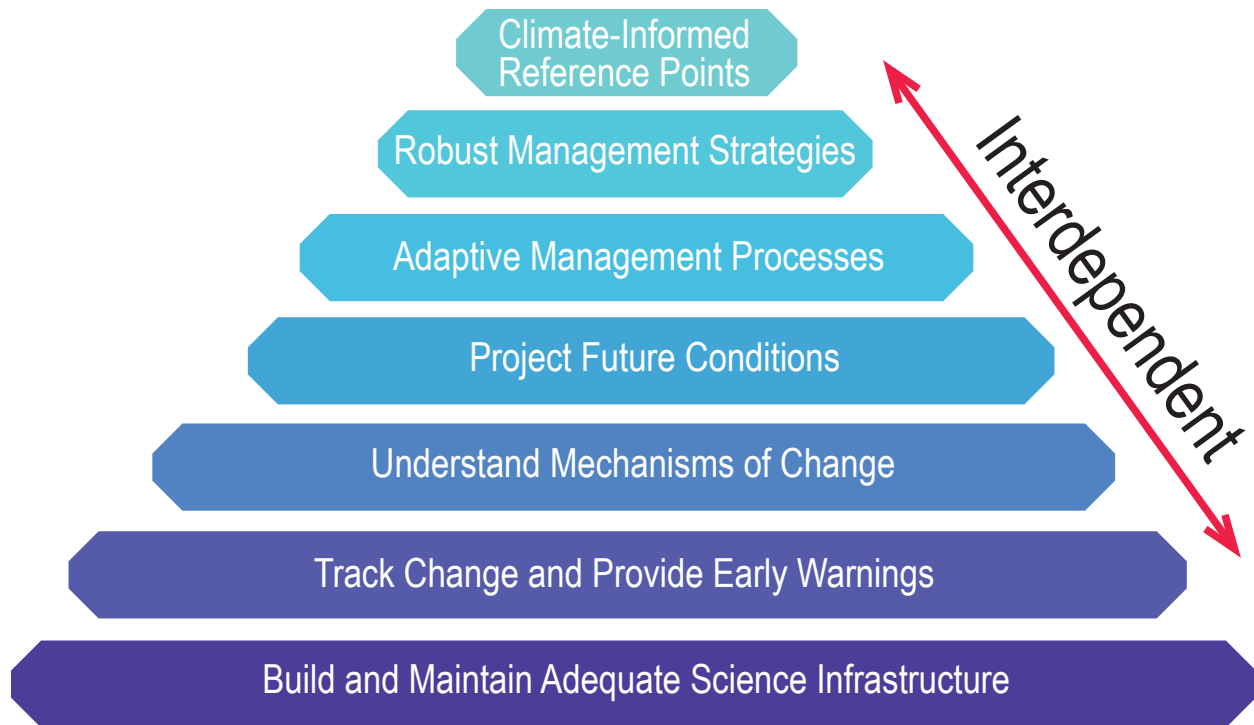


rate climate change into NOAA Fisheries scientific advice already exist, though improvements are needed in the production, use and application of these tools. There are major gaps in our ability to track and provide early warnings of climate-related changes in marine and coastal ecosystems. Similarly there are major gaps in our understanding of the mechanisms of climate-impacts on LMRs, and our ability to forecast or project future climate impacts and incorporate this information into management strategies and actions.

NOAA Fisheries has a network of internal and external partnerships that can be mobilized to help address many of these needs, and in fact, partners are critical to filling some of the science and information needs (Table 2). However, many challenges remain. For example, many of the data-sets needed for models that project climate impacts on LMRs and their habitats are not available. Additional efforts are needed to collect relevant climate-related data as a regular part of the information base supporting LMR management (Osgood 2008; Hollowed et al. 2009; Stock et al. 2011). Additional action is also needed to effectively structure and employ models and other tools that utilize climate, biological, and ecological information and further link these parameters to community well-being. Research to better understand key mechanisms and processes linking climate-induced changes to LMRs is also needed to make better projections of possible future conditions. And there is a need to identify and test how to effectively insert and apply climate-related information into LMR management processes (Figure 3).

All of these endeavors require adequate science infrastructure, coordination, and financial support in both the near and long term. Given that many of NOAA Fisheries mandates have common needs for climate-related information, this Strategy identifies a variety of key products and responses that are needed and useful to meeting multiple mandates.

## Climate Science Strategy Objectives



**Figure 5: This Strategy identifies seven Priority Objectives based on the following questions that need to be addressed to ensure effective LMR management in a changing climate**

1. How can climate-related effects be incorporated into LMR reference points?
2. What are robust LMR management strategies in the face of climate change?
3. How can climate-related effects be incorporated into adaptive LMR management processes?
4. How will the abundance and distribution of LMRs and marine ecosystems change in the future, and how will these changes affect LMR-dependent communities?
5. How and why does climate change alter LMRs, ecosystems, and LMR-dependent human communities?
6. What are the observed trends in climate, LMRs and LMR-dependent communities?
7. What science infrastructure is needed to produce and deliver this information?

## CHAPTER 2

### Increasing the Production, Delivery, and Use of Climate-Related Information

The goal of this Strategy is to increase the production, delivery, and use of the climate-related information needed to fulfill the NOAA Fisheries LMR stewardship mission. The Strategy is designed to provide a national framework that can be regionally tailored and implemented through NOAA Fisheries Science Centers, Regional Offices, and partners over the next 3-5 years.

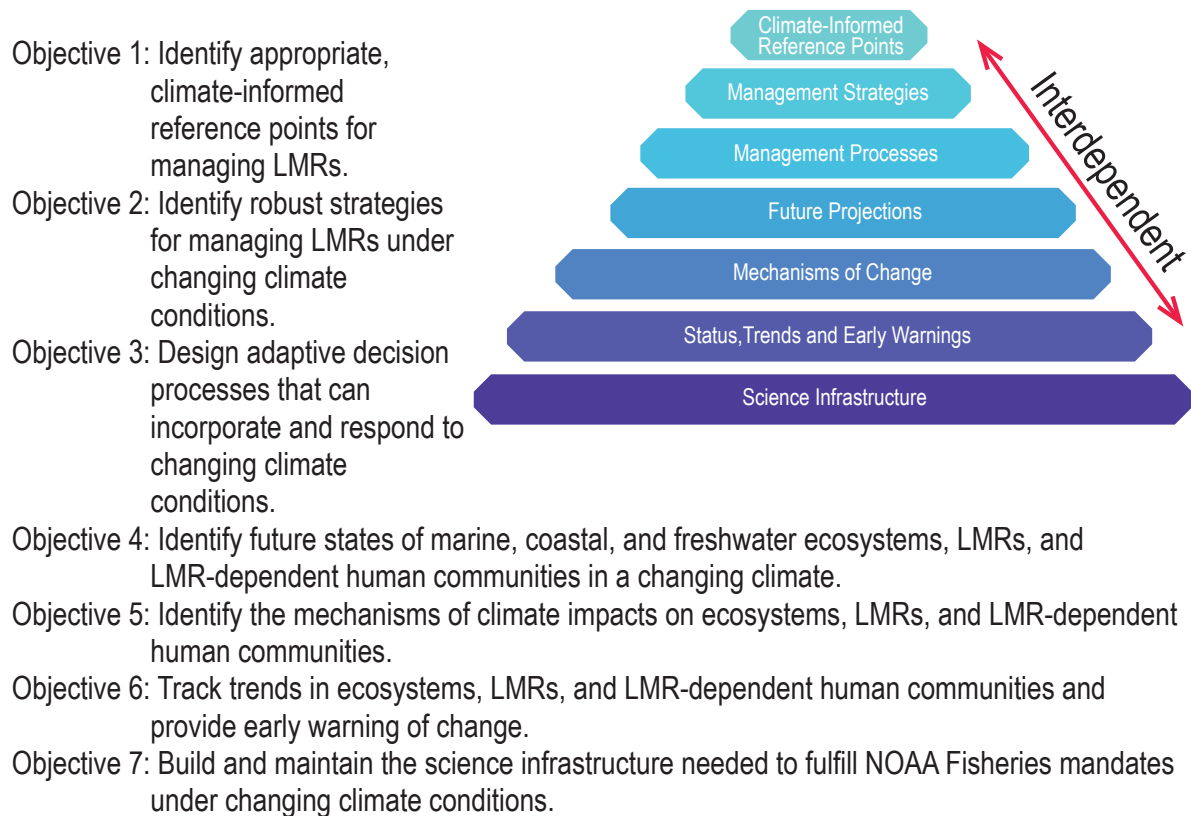
This Strategy is intended to address the key climate-related information needs and ways to address them (Table 1). These needs were derived from existing assessments and related sources (e.g., Murawski and Matlock 2006; Osgood 2008; Griffis and Howard 2013), then generalized across mandates to identify analytical products and the science enterprise required to address them. Finally, consideration was given to the infrastructure needed to produce and deliver the needed science.

While each NOAA Fisheries mandate has specific requirements, four main findings played a key role in shaping the content of this Strategy:

1. There are common information needs that exist across all major mandates.
2. The science-to-management process is relatively consistent across mandates, making advances in climate-related science and information applicable across multiple mandates.
3. Advances in the science and practice of ecosystem-based management are considered the most effective approach to achieve the desired objectives of all the respective mandates simultaneously.
4. There are common, climate-related tools, approaches, or information that can efficiently and effectively inform all of NOAA Fisheries mandates.

While it is clear that there are also mandate- and region-specific needs, this Strategy is designed to provide a nationally consistent blueprint that can provide tangible solutions for a variety of priority common needs and also help address the more unique science and information needs of each mandate and region. This Strategy capitalizes on these common elements and suggests an over-arching framework for action to build the needed science enterprise.

This Strategy includes seven priority science objectives needed to meet NOAA Fisheries climate-related information needs in a changing climate (Figure 5). The objectives are highly complementary and interdependent; the output from any one objective contributes to or is essential to one or more of the others. The first three are objectives related to providing climate-informed advice for use in LMR management (management-oriented objectives), and the final four are more closely related to generating the climate-related information needed to produce that management advice (science-oriented objectives):



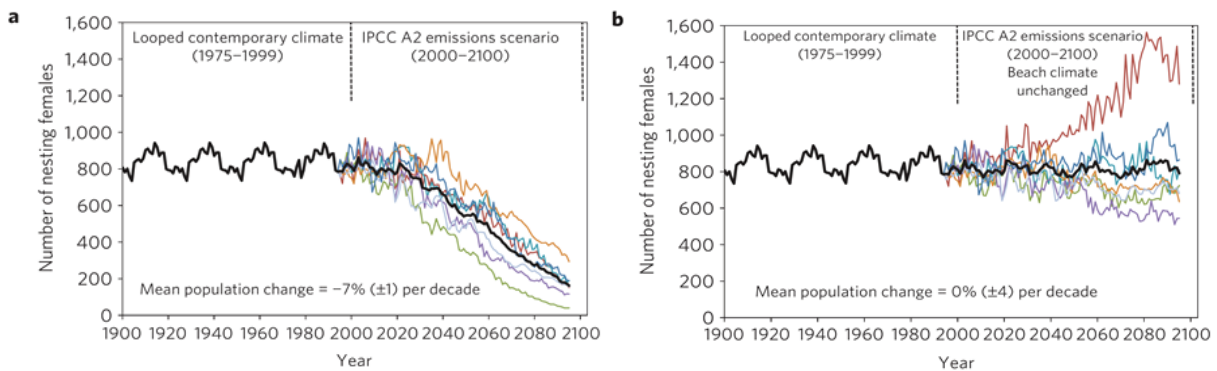
To meet these seven priority objectives, NOAA Fisheries needs to identify and fill information gaps; bolster ongoing efforts that are climate-relevant; explore novel ways to produce and deliver salient information; and develop climate-smart management approaches. This chapter describes the information needed to address each of our objectives, plus the germane products, strategies, and delivery of each (Table 3).

These seven priority objectives were ordered according to the main mandated responsibility areas (Table 1), deriving known management needs, generalizing across mandates, identifying analytical products and the science enterprise to support those management needs, and finally noting the infrastructure needed to support that science. Thus, all subsequent objectives support the objectives above it (Figure 5). Building this nested and interdependent science foundation is the core of this Strategy.

## Increasing understanding and planning for changing ocean conditions

### Projections of the response of leatherback turtles to changing climate and ocean conditions

Leatherback turtle (*Dermochelys coriacea*) population dynamics are differentially sensitive to changes in climate and ocean conditions. Population projections under an Intergovernmental Panel on Climate Change emissions scenario indicate a 7 percent decline per decade when both ocean and nesting beach climate conditions change. A 2 to 3 °C warming of the nesting beach was the primary driver of the decline through reduced hatching success and hatchling emergence rate. Adjusting nesting phenology or changing nesting sites may not entirely prevent the decline, but could offset the decline rate. However, if future observations show a long-term decline, mitigation efforts such as shading and irrigation of nests may be able to preserve the nesting population (Saba et al. 2012). Predicted sea level rise could significantly impact nesting beaches through impacts from ocean inundation, loss of suitable habitat, and increased competition for best nesting sites.



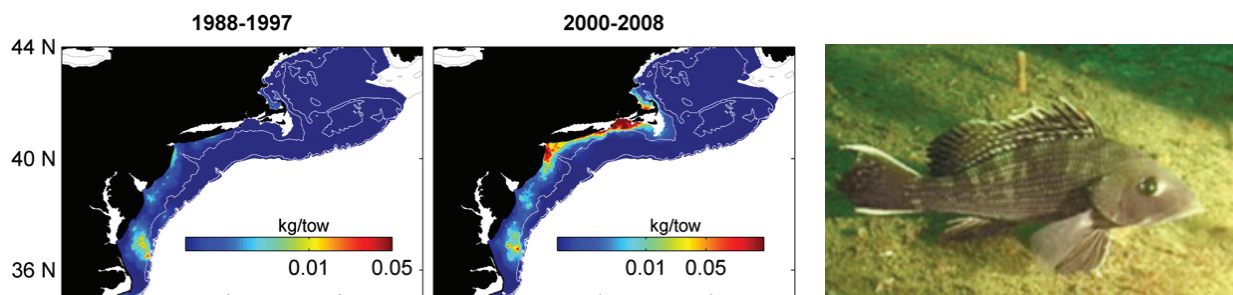
**Figure 6: Leatherback turtle nesting population projections at Playa Grande, Costa Rica in the Eastern Pacific Ocean. Colored lines are population projections based on individual global climate models and the solid black line is the projection ensemble. From Saba et al. 2012.**

## Fisheries management implications from a changing climate

### Changing fisheries behavior in response to climate-induced changes to LMRs

Climate-forced changes in species distributions are causing changes in both fishery operations and fisheries management. These changes are currently reactions; i.e., unplanned changes that are made as a result of climate change. This Strategy seeks to enable fisheries adaptation to climate change; i.e., planned changes that reduce the vulnerability of social and biological systems to climate change (Quentin Grafton 2010). Fisheries along the Northeast United States serve as an example of reactions to climate change. Fish and shellfish populations are shifting predominantly northward or to deeper waters, consistent with expected biological responses to warming waters (Nye et al. 2009; Pinsky et al. 2013). These changes in species distribution have led to changes in the distribution of landings (Pinsky and Fogarty 2012); landings of lobster, yellowtail flounder, summer flounder, and red hake shifted northward but at a slower rate than species distributions, which suggests an increasing disconnect between fishing and species distributions.

Many fishery species are managed in part with spatial allocation systems. Along the Northeast, the Atlantic States Marine Fisheries Commission uses a state allocation system based on historical patterns in landings. As species distributions change, landings distribution change, and the state allocation system can become out of sync with the distribution of landings, fishing effort, and the distribution of the resource. NOAA Fisheries scientists are providing products to the Commission to inform their discussions about potential changes in the state allocation system. These products include maps of species distribution when the allocations were set and analyses documenting the extent and examining the case of distribution changes (Bell et al. 2014 ). This support is ongoing and is an initial effort to develop climate adaptation for fisheries in the region.

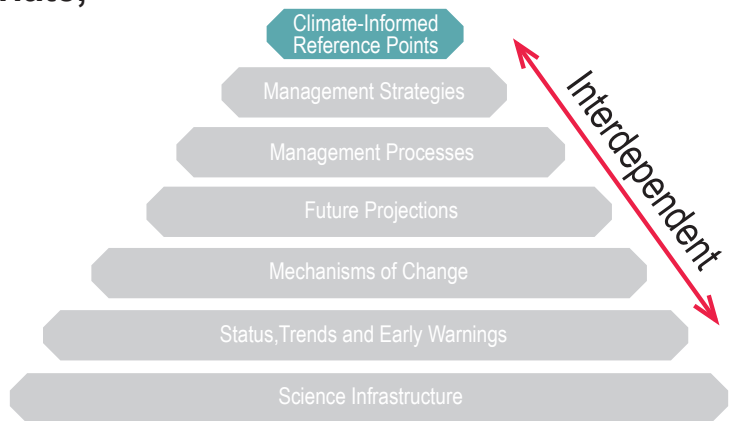


**Figure 7: Distribution of black sea bass in the fall over the period when state allocations were set (1988–1997) and more recently (2000–2008). A black sea bass pictured in Stellwagen Bank National Marine Sanctuary in 2001. Photo Credit: NOAA Stellwagen Bank National Marine Sanctuary.**

## Objective 1: Identify appropriate, climate-informed reference points for managing LMRs.

Reference points are the thresholds upon which LMR management decisions are made. Determining how climate-related effects should be incorporated into LMR reference points is critical to advance climate-ready fisheries. As stocks, protected species, habitats, aquaculture, and ecosystems are expected to respond to climate change, the reference points for

these species, systems, and human uses may need to change to reflect those different conditions. Ongoing scrutiny of these reference points has already indicated the need for and benefits of bolstering the use of climate-related information in LMR reference points and assessments.



Development of biological reference points (BRPs) is a primary objective for much of the science conducted by NOAA Fisheries to meet its mandates. Be they single-species measures of maximum sustainable yield, thresholds for habitat designations, potential biological removal of marine mammals, multispecies fishing rates, thresholds for ecosystem-level indicators, protected species recovery criteria, or a host of others (Table 1), these reference points are used as limits or decision criteria to guide sustainable management of LMRs and their habitats. These reference points are typically developed via modeling exercises that synthesize a broad suite of observational and experimental information and are peer-reviewed. This careful vetting ensures that decision criteria are effective at achieving sustainable management, species recovery, or other stewardship goals. Strengthening NOAA Fisheries ability to incorporate consideration of climate change into all the steps that lead to providing reference points is critical.

A number of products can be routinely created to meet this objective. Novel or updated LMR management plans and documents are typically produced for each management action. Usually, documents such as Fishery Management Plans, Fishery Ecosystem Plans, Biological Opinions, Species Recovery Plans, Environmental Impact Assessments, and Social Impact Assessments inform Ecosystem Assessments, ESA Status Assessments, MMPA and MSA Stock Assessment Reports, habitat assessments, restoration reports, and EFH designations. These plans and documents provide the scientific basis for the management of LMRs (Table 1). They are regularly used in decision making, by NOAA Fisheries, Regional Fishery Management Councils; Regional Ocean Councils; Regional Planning Boards; State Fishery Commissions; Regional Fishery Management Organizations; many federal, state, and local agencies and organizations; and other managers.

Most current assessments, and the reference points produced by them and included in management plans, assume that future natural variability will reflect the range of conditions observed in the past. Such reference points often do not account for the fact that ecosystems and the LMRs in them will change with the directional forcing of climate change. Therefore, stock assessments, biological reference points, and fisheries management plans based on these assessments may not adequately capture the future population dynamics in a changing ocean. In other situations, mandates allow managers to shift their reference points in response to shifts in the environment, such as regime shifts (large, abrupt, persistent changes in the structure and function

of an eco-system). However, unlike regime shifts—for which estimates of past and current conditions exist—climate change is expected to create novel conditions not captured by past datasets, making identification of baseline conditions and reference points more difficult. In these circumstances, the key is to establish reference points that are robust to shifting status of managed species (Punt et al. 2013) and associated ecosystems.

Moving forward, LMR management plans (e.g., Fishery Management Plans, Fishery Ecosystem Plans, Species Recovery Plans, etc.) need to document that decision criteria explicitly to include climate-related considerations. Accounting for and, where appropriate, including the best available climate-related science to inform reference points is a necessity to avoid misaligned management targets. Additionally, many of these plans need to include socio-economic analyses that show the consequences of neglecting climate change in establishing biological reference points. Such analyses are challenging but feasible. Moreover, they are critical to demonstrating the value (both biologically and socio-economically) of managing LMRs using reference points that consider the effects of climate change. Misaligned reference points may result in foregone revenue or missed opportunities (e.g., biological, social, economic, cultural) due to climate-induced changes in production, distribution, or other dynamics of LMRs that have been unaccounted for in the analysis.

Finally, a reporting tool accessible to all stakeholders, which simultaneously tracks the status of stocks, ecosystems, and social and economic conditions over time would provide useful products for adequately achieving this objective. NOAA Fisheries has the building blocks for developing such a reporting tool, but does not currently collect and communicate the information in such a comprehensive way.

Important strategies to bolster and better deliver climate-smart reference points include:

- Identify ecosystem-based reference points that include climate change and ecosystem information for all LMR management plans and strategies and their habitats.
- Modify existing biological reference points that fail to include ecosystem considerations and assume that environmental conditions of the past will persist into the future.
- Communicate that ecosystem-based biological reference points improve accuracy, especially under climate change.
- Foster innovation in climate-smart scenario testing.
- Elucidate the positive opportunities associated with emerging LMRs.
- Develop scientific underpinning for Environmental Impact Statements for climate change in each region, including comprehensive socio-economic impact analyses.

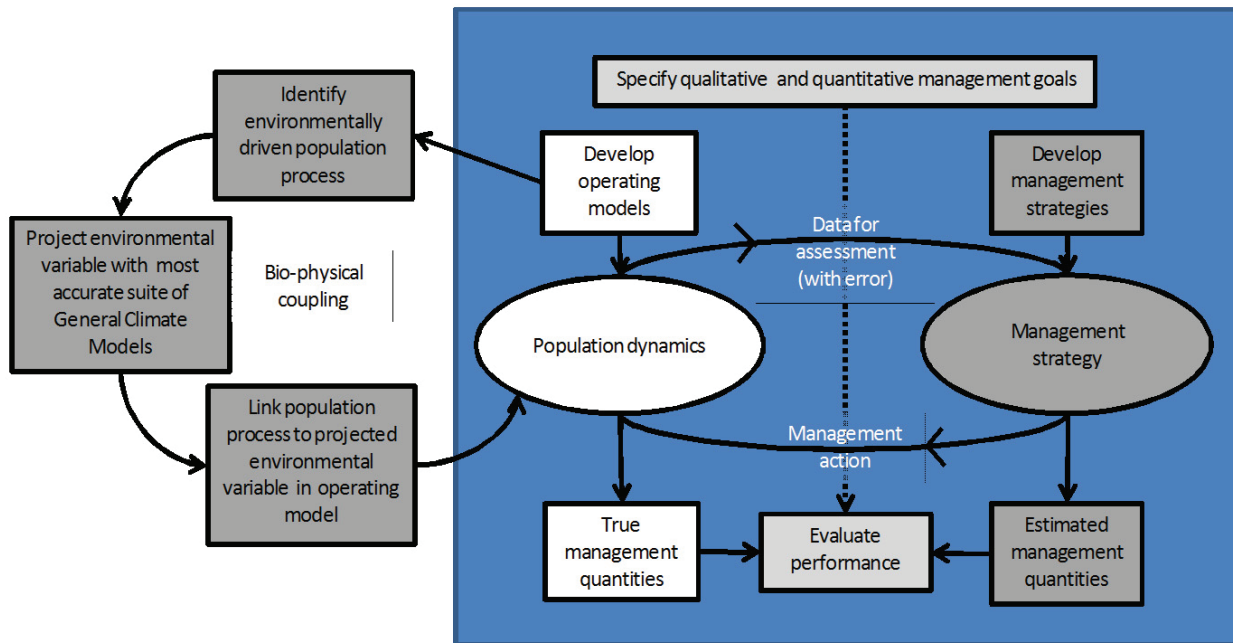


## Tools for fisheries management in a changing climate

### Management Strategy Evaluations

There are many forms of management strategy evaluations to identify robust management measures in the context of a changing climate. They range from qualitative assessments of the implications of a proposed change in management, to highly technical simulations of the performance of a proposed strategy relative to a suite of performance metrics (e.g., maintaining a stock above a suite of biological reference points). In the context of climate change, the full range of management strategy evaluations is relevant. For example, in the near term, considerable insight can be derived from a qualitative assessment of the vulnerability of a suite of stocks to the combined impacts of climate change and fishing. NOAA Fisheries can use these vulnerability assessments to prioritize research on adaptation strategies for the most vulnerable resources.

The more formal simulation modeling approach is emerging as a primary tool for delivery of adaptation strategies for the sustainable management of LMRs. Management strategy evaluations vary in complexity and biological realism, ranging from fully coupled bio-physical models of regional ecosystem responses to climate forcing, to climate-enhanced single- or multi-species projection models. These approaches incorporate bottom-up and top-down forcing through time.



**Figure 8: Schematic of a typical stock-focused MSE.** Taken, with permission, from Punt et al. (in press), and adapted from Smith et al. (1999), Schnute et al. (2007), and Szuwalski and Punt (2012).

### Management Strategy Evaluations continued

The fully coupled ecosystem models formally capture species interactions in space and time through first principles of bio-energetics, predation, and probability of encounter with prey. Examples include size spectrum models, food-web models, full life-cycle individual-based models, and gradient tracking spatial models that incorporate predator-prey interactions and bio-energetics. Climate-enhanced single- or multi-species projection models use time trajectories of physics (reproductive success), prey availability (growth and survival), predation (mortality), and bioenergetics (growth and maturation) to inform functional responses, model parameterizations, model structure, and even covariates for modeled stocks into the future.

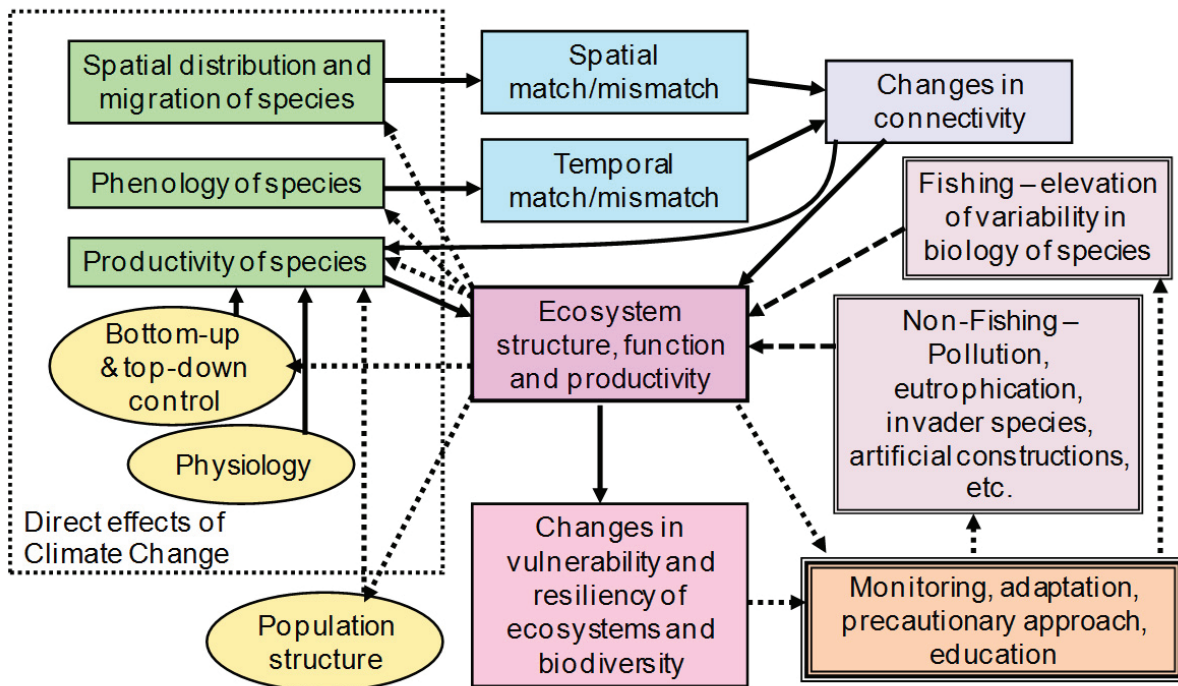


Figure 9: Schematic of many factors that can go into ecosystem-level management strategy evaluations. Adapted from Smith et al. 1999, Fulton et al. 2013.

## Objective 2: Identify robust strategies for managing LMRs under changing climate conditions.

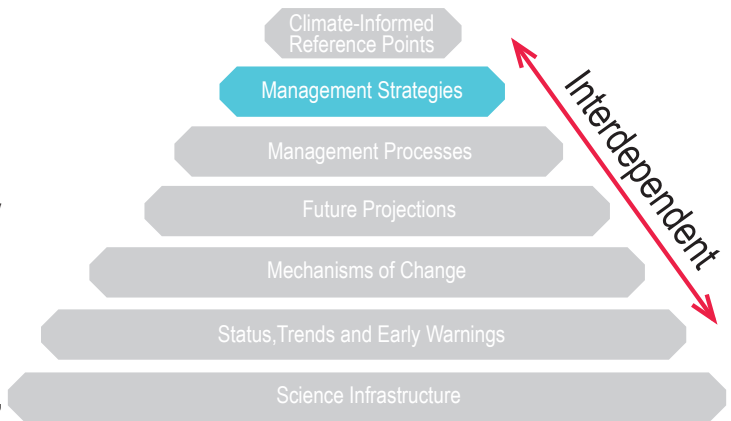
There is a critical need to identify and evaluate the strengths and weaknesses of alternative LMR management approaches in the face of a changing climate. This is particularly important because the best management practices for LMRs today may not be the best management practices in the future.

To identify management strategies that are robust to future change, various ecosystem, socio-economic, and LMR models can be coupled with scenarios of climate change to test the performance of current and alternate management practices under future conditions (Battin et al. 2007; Crozier et al. 2008; Ianelli et al. 2011; Boughton and Pike 2013; Nye et al. 2013; Szuwalski and Punt 2013; Wilderbuer et al. 2013). Such Management Strategy Evaluations (MSE) will assist in the design and evaluation of management options and adaptive management strategies for LMRs, and should help identify management options that are robust to a wide range of predicted future conditions. Additionally, they could be used to identify the time scale of change and adaptation, allowing us to better focus resources and emphasis. Similar models for cultivated LMRs exist for aquaculture and can be used to predict changes in production due to changing ocean conditions and consumptive and non-consumptive uses (Shelton 2014). Conversely, models of shellfish and seaweed physiology could be used to evaluate the potential for aquaculture systems to provide refuge to LMRs from changing climate and to remove carbon from the coastal ocean.

NOAA Fisheries has considerable experience in designing and evaluating strategies for sustainable management of LMRs. Incorporation of expected climate-related changes to marine, coastal, and freshwater ecosystems, as well as human uses of those ecosystems, will help identify management practices and mitigation strategies that may be necessary in the future. Through these processes, NOAA Fisheries can provide information on the effectiveness of current management practices and the design and performance of alternative management practices that may be superior.

For example, management strategy evaluations for fisheries management practices, recovery plans for ESA-listed species, management practices for aquaculture, use of aquaculture as mitigation, and designation of essential or critical habitat should incorporate understanding of the impacts of climate change into the design of effective management strategies. Such management strategy evaluations would support development of sound adaptive management practices.

A number of products could be routinely created to meet this objective. Reports of such management strategy evaluation efforts that cover the full range of climate, harvest, mitigation, and adaptation scenarios are needed. Within these reports, documented changes to biological reference points across a range of scenarios warrants examination, including a catalog of associated LMR and socio-economic responses.



Reports generated from these management strategy evaluations need to clearly identify the most robust strategies that will not weaken LMR sustainability. Management strategy evaluation reports should also identify protection and mitigation measures, harvest control rules, and related management options that are compulsory to best manage across a suite of LMRs or systems. The best levels of these biological reference points, reflective of a range of possible risk tolerances, need to be examined to better inform risk-based policies.

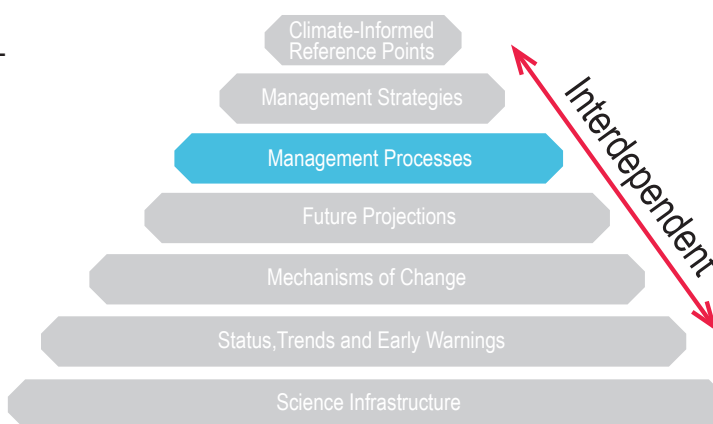
Many LMRs and ecosystems are experiencing changes in realized production or shifting distributions (Pinsky and Fogarty 2012). Exploration of these situations warrants particular attention. Some LMRs will move into ecosystems with more favorable environmental conditions. Management strategy evaluations to determine how to handle these opportunities also warrant exploration.

Important strategies to bolster and better deliver climate-ready management strategies include:

- Conduct management strategy evaluations and generate other information to allow risk-based policies to be re-evaluated under a changing climate.
- Establish science-based approaches and policies for determining biological reference points and LMR and ecosystem productivities with changing climate and ecosystem conditions.
- Establish science-based thresholds and policies for dealing with the immigration and emigration of LMRs to/from ecosystems.
- Conduct more routine and regular LMR management strategy evaluations with NOAA Fisheries partners and constituents to provide science-based assessments of management options in a changing climate.
- Examine efficacy of proposed mitigation strategies.
- Include human behavioral response or motivations into management design, execution, and evaluation.

### Objective 3: Design adaptive decision processes that can incorporate and respond to changing climate conditions.

The procedures used to examine, vet, and provide scientific advice to support management strategies and decisions can be as important as the management advice itself. Answering how climate-related effects can be incorporated into adaptive LMR management processes is a key question that NOAA Fisheries must address. As depicted simply in Figure 3, the science and information delivery process for any of the main NOAA Fisheries mandates (Table 1) follows a similar sequence: collecting data, synthesizing available information,



reviewing outputs, and providing information to determine the status of LMRs, habitats, or ecosystems. The resulting management advice provided at the end of the process is only as strong as the weakest link in that process. If climate-related information is not included in this management advice process, decisions based on it may not result in sustainable management (e.g., Beechie et al. 2013; McClure et al. 2013).

Copious works have documented, described, and evaluated management systems for LMRs and natural resources (Holling 1978; Walters 1986; Hilborn and Mangel 1998). We do not repeat that work here; rather we build on it and note one key point: climate-related information may need to be incorporated into the management process to effectively achieve management and conservation goals. Doing so would require a number of steps. Clearly an openness to incorporate considerations of climate-related information is a huge first step. Second, knowing where the best insertion points are for specific types of climate-related information is critical. Third, building adaptability into the management process is necessary to allow inclusion of new understanding related to climate change and information related to the rate of environmental change.

Easing the integration of climate science into the management process may necessitate some changes to the management process itself, requiring close collaboration between managers and scientists. For example, robust strategies for managing LMRs under climate change may require both regular updates in the short term based on performance tracking and periodic evaluation against rigorous management strategy evaluations that employ fully coupled sets of system models. In this example, both the close interaction between managers and scientists and the need for managers to be able to adapt on a routine basis (without scientists having to execute detailed analyses each time) are highlighted. Recent scientific inquiry suggests that detailed analyses are needed to assess whether current management strategies are robust to climate change. Research also suggests that LMR management strategies that are successful under climate change include adaptive management cycles with control rules for changing conditions and monitoring programs to develop and track necessary status indicators.

The primary output for this objective would be scientific support for management processes that are adaptive and flexible in both the short and long term under the various NOAA Fisheries mandates. These processes would need to be measured by key performance metrics related to their timeliness and accuracy

with respect to the ecosystem, LMR, and socio-economic impacts of climate change.

Further, identification of where in the management process climate-smart information could best be incorporated is needed, recognizing that there may be multiple insertion points (e.g, Sutton-Grier et al. 2014). This could be established under different management strategy evaluations.

Important strategies to bolster and better deliver climate-smart, adaptive management processes include:

- Design scientifically sound review-evaluation protocols that could ensure consideration of climate change as a standard part of LMR management advice.<sup>8</sup>
- Develop and document the scientific basis for the need for climate change considerations in legislation or technical guidance.
- Identify the many ways that information and understanding related to climate change can be inserted into the management process.
- Establish climate-ecosystem and socio-economic criteria that could become a standard part of review of LMR advice.
- Recognize and involve resource-dependent communities whose future depends on adapting to dynamic marine resources to minimize impacts and help foster resilience (tribes, coastal dependent communities and stakeholders).

---

<sup>8</sup> Developing review-evaluation protocols that ensure consideration of climate change could be quite involved, but initially could take the form of changing the standing terms of reference in the management process to include consideration of a dynamic climate. Making this change in stock assessments, recovery plans, biological opinions, and other NOAA Fisheries management contexts would ensure that any resultant biological reference points include considerations of climate change. This change in criteria would also hold for external review panels, such as Scientific and Statistical Committees and Scientific Review Groups; for permitting, siting, and review of essential fish and critical habitat, aquaculture, and NEPA consultations; and for Integrated Ecosystem Assessment scoping and reviews.

## Endangered species and a changing climate

### Arctic seals and the ESA

In 2007–2008, NOAA Fisheries was petitioned to list ribbon, spotted, bearded, and ringed seals under the Endangered Species Act (ESA), based primarily on concerns about loss of sea ice in a disrupted, warming Arctic climate. All four of these seal species are strongly associated with sea ice as habitat for critical functions such as whelping and nursing of pups, and annual molting.

- In 2008 and 2013, NOAA Fisheries determined that the ribbon seal did not warrant listing under the ESA.
- In 2010, NOAA Fisheries determined that listing spotted seals in the Distinct Population Segments (DPSs) of the Bering Sea and the Sea of Okhotsk was not warranted. However, the Southern DPS of spotted seals (in the Yellow Sea and Sea of Japan) was listed as threatened under the ESA.
- In 2012, NOAA Fisheries determined that the bearded seal subspecies *E. b. barbatus*, which occupies the Atlantic sector of the Arctic, did not warrant ESA listing. The subspecies *E. b. nauticus*, which occupies the Pacific sector, was further divided into the Okhotsk DPS (Sea of Okhotsk) and the Beringia DPS (Bering, Chukchi, Beaufort, and East Siberian Seas), both of which were listed as threatened because sea ice is projected to decline dramatically during this century in substantial areas of shallow water that are important for benthic foraging. However, these listings were vacated by a federal judge in Alaska in July 2014 (*Alaska Oil and Gas Association v. Pritzker*, 13-18-RRB, D. Alaska).
- Also in 2012, NOAA Fisheries determined that the ringed seal subspecies *P. h. saimensis* (Lake Saimaa, Finland) should retain its 1993 listing as endangered under the ESA and that *P. h. ladogensis* (Lake Ladoga, Russia) should also be listed as endangered. Ringed seal subspecies *P. h. botnica* (Baltic Sea), *P. h. ochotensis* (Sea of Okhotsk), and *P. h. hispida* (Arctic Ocean and surrounding seas) were listed as threatened. In addition to a loss of sea-ice habitat, these subspecies were listed because snow depth on sea ice during the early spring is projected to diminish during this century below the critical depth required for birthing and nursing lairs that shelter ringed seal pups from polar bear predation and hypothermia.

ESA decisions such as these depend heavily on observations and projections of climate-driven change in sea ice, snow, ocean chemistry, and other key environmental factors. Too often, the best available scientific information is sufficient to support only qualitative assessments of extinction risk. Improvements in our ability to quantify the environmental factors, their variability, and their influence on survival and reproduction of living marine resources are paramount for rational ESA decision-making.

These examples show how climate change effects are being considered in an ESA context, how such effects are going to differ across species and locations, and the challenges of incorporating climate change for such arctic species in future years.



**Spotted Seal**  
**Dave Withrow NOAA**



**Bearded seal, ring seal pup, ribbon seal.** Photo credit: Michael Cameron, NOAA Fisheries.

## Looking into the Crystal Ball: Improved Projections of Climate Impacts on Marine Resources

### Collaborations on modeling are necessary for developing projections of the future

Models play an important role in understanding climate change and projecting future climate conditions given different scenarios of human behavior (e.g., different trajectories of CO<sup>2</sup> emissions). NOAA, through the Office of Oceanic and Atmospheric Research (OAR), is a global leader in climate modeling and provides advice to the United States and the international community in the form of understanding, attribution, and the consequences of climate change to various aspects of the Earth's system. NOAA, through NOAA Fisheries, is responsible for providing advice regarding the management of the nation's LMRs. Much of this advice is based on assessments of current status and then the forecasting of future status given different scenarios of human behavior (e.g., fishing levels). This advice is then used to set catch levels, develop species recovery plans, or determine the effect of a specific action on LMRs (e.g., fishing effort impacts on sea turtles). The challenge is to couple these two operational infrastructures to incorporate climate information into the advice that NOAA Fisheries is legally mandated to provide to numerous partners and stakeholders.

NOAA Fisheries and OAR researchers have worked closely together for the past decade to develop and demonstrate potential links. Climate effects have been coupled into single-species models (Fogarty et al. 2008; Hollowed et al. 2009; Hare et al. 2010); these studies show that climate will affect the reference points used in management. Earth system models themselves have moved into simulating basic biological components of the Earth system (Stock et al. 2014); these models suggest that ocean biomes may shift and change in size, with potential implications for many LMRs (Polovina et al. 2011). These examples show paths forward for greater linkages between climate models and fisheries advice.

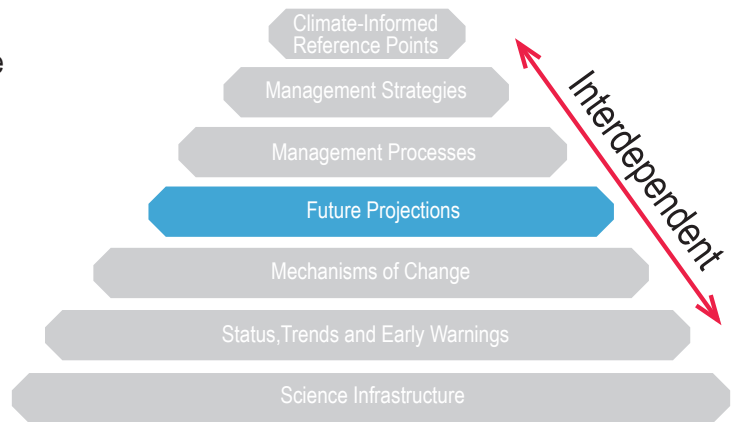
NOAA Fisheries scientists have also been working with a group of end-to-end models that link changes in the physical environment to changes in LMRs to changes in the socio-economics of fisheries (Fulton et al. 2011). These models represent the trophic interactions of ecosystems as well as the physics and human pressures. As examples, work on the West Coast demonstrates the potential cascading effects of ocean acidification on groundfish species (Kaplan et al. 2010) and, on the East Coast, the potential effect of warming on large predators (Nye et al. 2013). These models accommodate the interactive effects of climate change and fishing to be evaluated together and offer a powerful tool for examining the complexity of climate change and LMR dynamics. The next steps are to further improve these models and to develop greater integration between climate models and population and ecosystem models. This integration will allow the impacts of climate change on LMRs to be regularly incorporated into the scientific advice for management practices developed by NOAA Fisheries.



## Objective 4: Identify future states of marine, coastal, and freshwater ecosystems, LMRs, and LMR-dependent human communities in a changing climate.

Simulations of LMR dynamics using climate forecasts are needed to develop management protocols that can adapt to climate change. For example, how will the abundance and distribution of LMRs and marine ecosystems change in the future, and how will these changes affect LMR-dependent communities? Forward-looking management of LMRs depends on robust projections of future ocean conditions; marine, coastal, and freshwater ecosystems and

LMR responses; and human socio-economic systems and their responses to changing climatic conditions and related LMR responses. Linking changes in the physio-chemical system to marine resources and ecosystems represents a major challenge. Making additional linkages to climate effects on human communities and economies is a second major challenge.



Robust, model-based projections of the effects of climate change on marine, coastal, and freshwater ecosystems, LMRs, and human communities have the potential to provide useful information for natural resource decision-making on appropriate temporal and spatial scales. However, coupling across these models is not trivial.

Key projection considerations include:

- A capability to downscale and bias-adjust global climate and earth system models to better resolve regional responses of marine, coastal and freshwater ecosystems to large-scale climate changes.
- Different climate scenarios to examine the effect of management choices on population dynamics, population viability, bioenergetics, multispecies interactions, biodiversity, and species distributions, as well as primary and secondary production, habitat structure, energy budgets, food webs, and ecosystems. This requires coupling a full suite of models.
- Social and economic models can predict how future change in LMRs may affect working waterfronts; commercial, recreational, and subsistence fishermen; aquaculture operations; the seafood industry; seafood consumers; and preferences for consumptive and non-consumptive uses of LMRs, but warrants further development and coupling with other LMR and ecosystem models. Coupling these full suites of models is also needed.
- Hotspots for change in marine, coastal, and freshwater physical and bio-chemical condition can be identified from data as well as via projections with coupled models.
- Indicators that provide early warnings of rapid or impending change to LMRs, marine habitats, and ecosystems (e.g., large shifts in species phenology and distribution) need to be developed, and routinely monitored and projected as outputs of models.

This list provides a sense of the magnitude, scope, and types of data-driven modeling efforts required to better understand projections of LMRs under future conditions. Any such projections need to be downscaled appropri-

ately and temporally resolved to achieve robust projections of the state of future marine ecosystems. These projections should focus on short-, medium-, and longer-term time scales. Many NOAA Fisheries mandates require projections of population status, and working with climate scientists to provide the climate-related projections is increasingly needed to help fill these needs. Earth system models and global climate models do not project best at scales of days to weeks, but rather at scales of multiple decades to centuries (Stock et al. 2011). The 3–to 10-year projections often needed for LMR management fall between the time scales that climate models predict well, and this poses a challenge for the future.

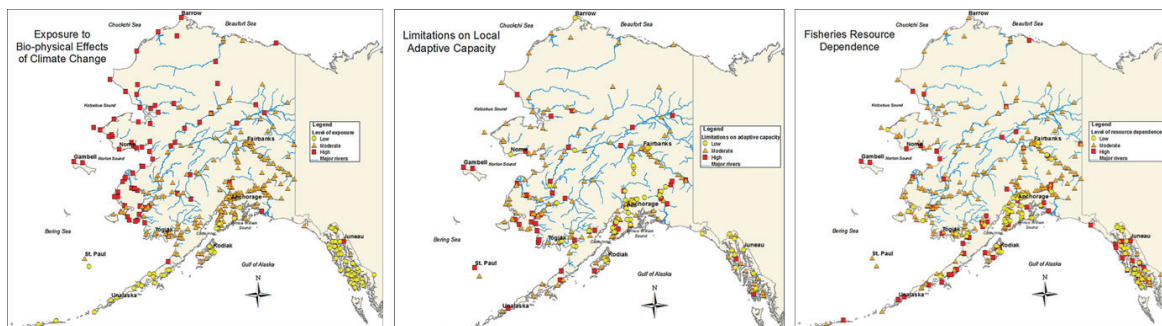
In addition to these model-based needs, other important products can be routinely created to meet this objective. One of the key outputs from these projections should be the identification of realistic future scenarios and feasible management strategies. These can set the stage for management actions by bounding future ranges of probable climate conditions. Doing so can minimize exploration of unrealistic scenarios and, thus, ineffective strategies.

NOAA Fisheries and partners should increase efforts to enhance the production, delivery and use of climate-related models/projections in LMR management. Establishing regional and national modeling teams focused on improved projections of climate impacts on LMRs and LMR management could help meet these needs. Regional modeling teams could, for example, develop and refine models, linkages among models, and scenarios that allow end-to-end modeling exercises to project the impacts of changes to climate condition on LMRs and ultimately how human communities then modify and adapt their uses of LMRs and ecosystems. They could also provide technical advice on the quality and applicability of modeling output. National teams of NOAA Fisheries experts could develop best practices for integrating changing climate conditions into modeling exercises (e.g., ensemble approach) and help the regions tackle climate change related efforts in a coordinated and consistent way. These teams would also serve as the experts for linking new research and understanding into the development of advice.

## Vulnerable Coastal Communities

### Assessing climate change vulnerability in Alaska’s fishing communities

Himes et al. 2014 developed a framework of indicators to assess three basic constituents of community vulnerability (exposure, adaptive capacity, and dependence) to climate change.



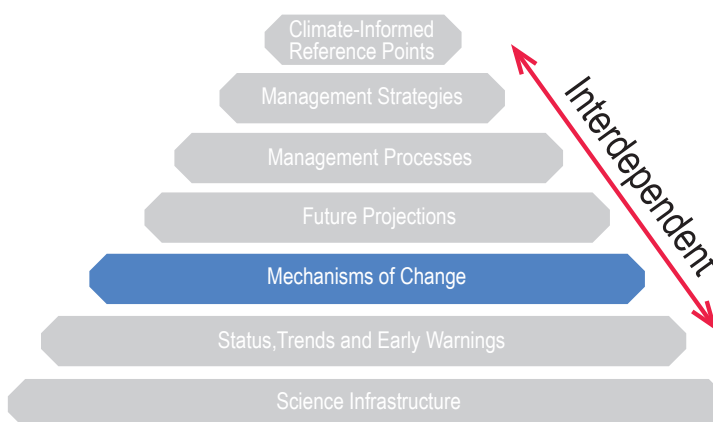
**Figure 10: Residents of rural Alaska report changes to the geographic distribution and abundance of marine resources, increases in storms in the Bering Sea, changes in the distribution and thickness of sea ice, and increases in river and coastal erosion. When combined with ongoing socio-economic change, climate, weather, and changes in the biophysical system interact in a complex web of feedbacks and interactions that make life in rural Alaska challenging.**

Important strategies to bolster and better deliver climate-smart projections include:

- Develop a standard modeling toolbox (or at least documented best practices) to link future ocean and freshwater states and LMRs, with ability to couple models across types.
- Establish best practices for modeling under uncertainty (e.g., multi-model inference).
- Research socio-economic consequences of future climate scenarios and LMR, and explore a range of probable human LMR-use responses.
- Build on past National Ecosystem Modeling Workshops (NEMoWs).
- Identify ways to integrate research with existing systems and communicate information to stakeholders.

## Objective 5: Identify the mechanisms of climate impacts on ecosystems, LMRs, and LMR-dependent human communities.

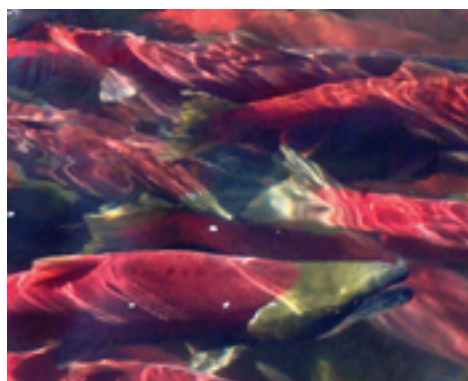
Understanding how and why changing climate can affect LMRs and LMR-dependent human communities can improve responses to current impacts, strengthen projections of future impacts, and help identify strategies to increase resilience. This type of process research - as well as vulnerability assessments - are key tools for identifying which LMRs and ecosystems may be most at risk in a changing climate, the reasons and mechanisms behind these risks, and what actions might reduce risks and increase resilience.



### Salmonid Adaptations

#### How Will Species Adapt? Migration of Adult Sockeye Salmon

Sockeye salmon, like other anadromous fishes, lay eggs in freshwater, migrate to the ocean as juveniles, and return to their natal waters to spawn 2 to 4 years later. Like other salmonids, they tend to be highly locally adapted to the combination of conditions in their freshwater and marine environments. The Columbia River basin was historically home to many populations of lake-spawning sockeye salmon; several populations of these remain, with the largest population found in the Okanogan Basin, Canada. Since the Columbia River was dammed, however, these fish have faced changes in temperature and flow that have altered the natural environment. Currently, the Columbia River reaches biologically important temperatures more than 2 weeks earlier than it did in the 1950s, and experiences a mean temperature in June and July, when sockeye migrate, that is about 1.5 °C warmer. In addition, mean flow during migration periods is over 50 percent lower than it was historically (Quinn and Adams 1996; Quinn et al. 1997). In response, sockeye salmon have changed both the speed and timing of their migration—arriving nearly 11 days earlier at dams along the Columbia than they did in the 1950s. Crozier and colleagues (2011) used a modeling approach to determine that an evolutionary response to thermal selection explained up to two-thirds of this trend in earlier arrival time, translating to a shift of about 0.3 days per generation. Most of the remainder of this trend appears to be due to a plastic response to changes in flow. The increase in temperature in this system is attributable to both impoundments (e.g., dams) and climate change; it is likely to continue as global temperatures increase. Importantly, these fish are subject to selective pressures in all of their environments, which may impose constraints on the species' ability to adapt to ongoing rises in temperature.



## Evaluating Climate Risk for Living Marine Resources

### Vulnerability assessments

Vulnerability assessments identify LMRs, habitats, or human communities that are especially sensitive (or especially resilient) to climate change. Such assessments combine exposure to physical conditions with sensitivity to these conditions and aim to identify vulnerability. Vulnerability assessments should be viewed as iterative, with an update frequency linked to the International Panel on Climate Change Assessment Reports (4 to 5 years). They have been developed for fisheries stocks (Mueter et al. 2011; Wainwright and Weitkamp 2013) and communities (Gaichas et al. 2014), marine mammals (Boveng et al. 2009), highly migratory species, habitats, ecosystems, and human social and economic systems. These assessments essentially utilize globally established best practices in risk assessment, particularly considering multiple criteria. They are a robust, feasible approach to help “triage” species and habitats in an ecosystem.

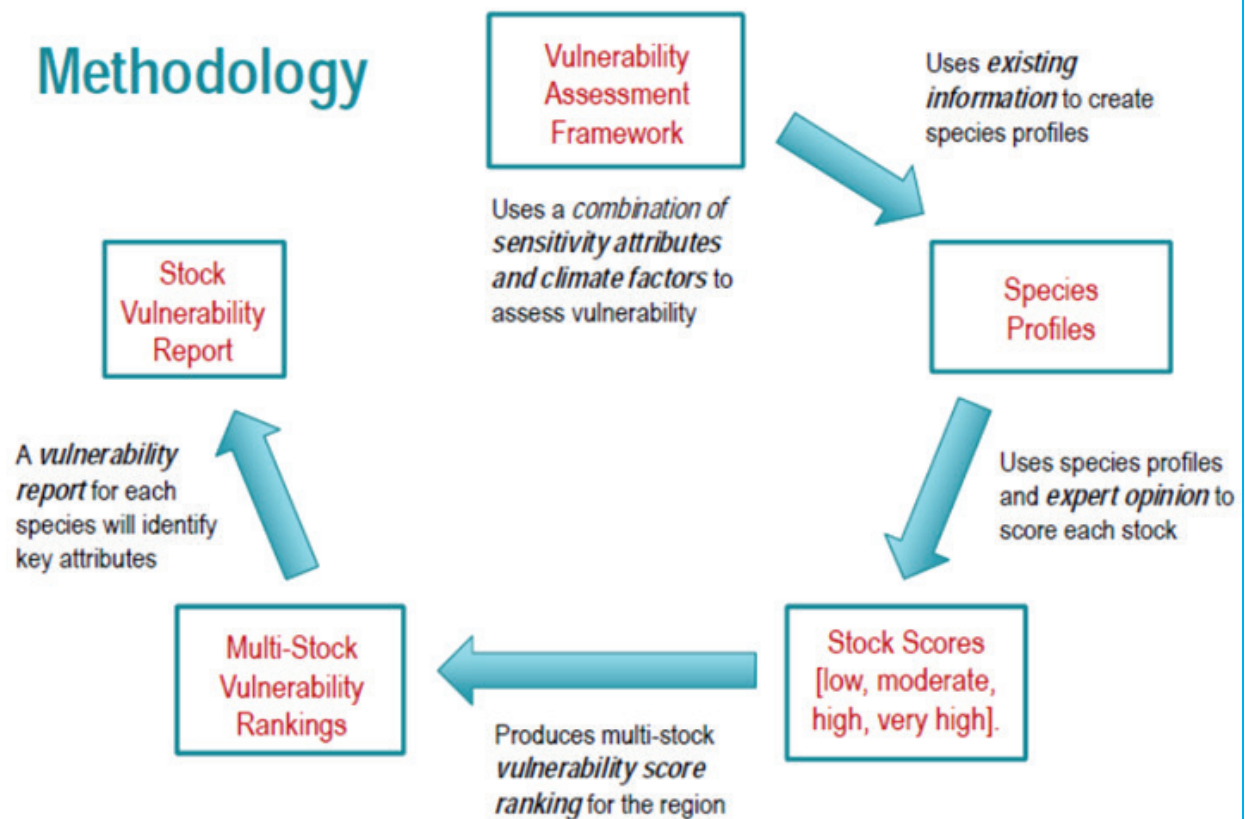


Figure 11: Methodology used by the NOAA Fisheries Fish Stock Vulnerability Assessment project

## Shifting Fish Stock Distributions

Marine fisheries distributions are changing in response to climate change. Pinsky et al. (2013) found that, in general, changes in species distributions around North America tracked changes in environmental conditions. However, they identified important regional differences. For example, species in the Northeast United States shifted northeast on average, but species in the Gulf of Mexico shifted southwest; the Gulf Coast precludes a northward shift. These results demonstrate how regional geomorphology and oceanography influence how a species or stock responds to climate change.

In the Northeast region specifically, Nye et al. (2009) found that approximately two-thirds of the stocks investigated shifted distribution. A majority of observed shifts were northward (~80%) and into deeper water (~85%). However, some stocks moved to the south and some moved into shallow water. These results demonstrate the importance of the interaction between climate change and individual species life history and ecology.

Changes in fishery distributions can result from shifts in individuals or spatial changes in population productivity. For example, the distribution of Atlantic surfclam has changed on the northeast U.S. shelf (Weinberg et al. 2005). Surfclams are sessile as adults, and the changes in distribution have been linked to increased mortality (decreased productivity) at the southern end of the range owing to increasing temperatures. In contrast, the distribution of Atlantic mackerel has changed, and this is at least partially linked to a change in migration and in overwintering habitats as a result of warming (e.g., changes in individual distribution; Overholtz et al. 2011; Radlinski et al. 2013).

Changes in distribution can be caused by any one of several stressors; the two primary stressors are climate change and fishing. Bell et al. (2014) found that the northward movement of summer flounder was related to increasing age-class structure over time, which is likely a result of decreased fishing and stock rebuilding. In contrast, the northward movement of scup and black sea bass was related to warming. These results emphasize the importance of documenting trends in distribution, studying the mechanisms that cause changes in distribution, and then transitioning this information into advice for use by LMR managers (see Link et al. 2011a; Link et al. 2011b).



Atlantic surfclam, Atlantic mackerel, summer flounder, scup (Credit: NOAA)

Vulnerability assessments are important tools to help identify species at higher risk in a changing climate, some reasons for these risks, and key information needs to better understand risks and adaptive capacity. The information from these assessments helps inform where additional science is needed and would be most beneficial. It can also suggest where management efforts may need to be focused to help reduce risks and increase resilience. Vulnerability assessments should be conducted for LMRs in all regions to help guide more specific research and possible management actions. Vulnerability assessment tools for LMR-dependent communities should also be developed to track and assess vulnerability under current and projected climate conditions.

Laboratory or field process research is critical to understanding the mechanisms underlying how and why species, ecosystems, habitats, and human systems are affected by climate related changes. Process research provides the information needed to design effective observing systems to track change, build early warning systems and strengthen models that project future conditions. Process research can also provide the information needed to develop effective management strategies that increase adaptive capacity and resilience to climate-related changes.

In short, climate change can affect LMRs via changes in:

- Genotype (natural selection, selective breeding).
- Vital rates (reproductive rate, emigration, immigration).
- Physiology rates (growth, consumption, respiration, metabolism, thermal tolerance).
- Susceptibility to disease.
- Trophic interactions.

These changes can result in a variety of subsequent changes to:

- Mortality.
- Productivity.
- Species distribution.
- Nutritional value of prey.
- Movement of migratory species.
- Habitat structure and location.

And those changes can in turn impact other parameters, such as:

- Species relative abundance.
- Community composition and predator-prey overlaps.
- Food web structure.
- Energy and matter fluxes.
- Invasive species.
- Life history.

Because of the sensitivity of species physiology to environmental conditions, changing environmental conditions may affect the distribution, migration, depth, and behavior of some species (see text boxes). Improving our understanding of how and why this change may occur provides mechanistic understandings needed for development and implementation of robust NOAA Fisheries management strategies.

Laboratory and field investigations can be targeted to reduce uncertainty about species tolerance,

response, and adaptive capacity to changing climate conditions and to the rate of change of environmental conditions. Laboratory experiments can examine the direct effects of single climate factors, the direct combined effect of multiple climate factors, and the indirect effects of changing climate conditions on species interactions, energetics, and resilience.

Field studies on the response of managed and ecologically important species to different environmental conditions can range from targeted, hypothesis-driven work to analysis of long-term survey data with relevant environmental parameters. Studies of ecological communities build knowledge on the functional role of biodiversity in maintaining ecological and ecosystem resilience.

Likewise, ethnographic fieldwork can be done to capture the processes that fishing-dependent communities use to respond and adapt to changing environmental conditions. Socio-economic analysis of LMR-user behavior over time can help explain historical patterns in resource use and how that use may change given future conditions. Additionally, enhancing social science capabilities can help elucidate patterns of vulnerability and promote community resilience in the face of climate change. Particularly needed are the data and analyses of changes in LMR-dependent communities, including both coastal communities and fisheries-related industries that will lead to improved understanding and prediction of social and economic changes resulting from the ecological effects of climate change.

NOAA Fisheries current capacity to conduct process-based research will not meet the demand for understanding how aquatic species, ecosystems, and LMR-dependent human communities may respond, acclimate, or adapt to climate change. Developing this capacity will require significant financial investment in state-of-the-art experimental facilities for rearing organisms under expected future conditions, the equipment needed to conduct research in field settings, and the up-to-date laboratory equipment required to process samples rapidly. In some cases, NOAA Fisheries has the needed assets, but will need to reprioritize them to most efficiently apply these assets to process studies related to climate change.

NOAA Fisheries needs to articulate the need for process-based research throughout the organization and beyond, then incorporate new understanding from this research into management advice. Strong partnerships with research institutions and funding agencies (e.g., National Science Foundation, National Aeronautics and Space Administration, Environmental Protection Agency, Department of Energy, Department of the Interior, and other NOAA Line Offices; Table 2) are critical to helping fill these needs.

A number of products should be routinely created to meet this objective. To properly target research, an assessment that identifies the major gaps in the research useful for generating data to inform management under climate change is needed for each region. The items above should be compiled into a national inventory of data gaps. Any such research pursuit would be in relation to one of the main climate-change-induced pressures on the physio-chemical environment noted in Figure 2. This would need to be followed by research into the socio-economic responses of human communities to such changes.

Research undertaken to meet this objective can be used to develop updated parameters for LMR and ecosystem models. Providing revisions to model functional form, structure, and parameterization will afford better predictive capabilities of LMR responses to a changing climate and ocean. Additionally, targeted process research can be used to develop mitigation strategies for either reducing climate impacts on LMRs or providing for lost value and services to human communities due to climate change. For example,



development and/or restoration of kelp forests and eel grass beds may provide some protection from ocean acidification, low oxygen, and storms. Similarly, researchers are testing whether seaweed and shellfish farms may provide similar ecosystem services important in a changing climate if expanded over a larger area of the ocean than natural beds (e.g., Chung et al. 2013). Aquaculture provides an opportunity to explore human intervention to reduce climate change impacts to vulnerable life stages and species.

Important strategies to bolster and better deliver climate-related process research include:

- Identify process research gaps in each region.
- Develop additional NOAA process research capacity internally and through competitive funding opportunities.
- Develop and maintain partnerships to conduct climate-LMR-related research.
- Organize and host regular national climate workshops with LMR emphasis for NOAA employees across line-office and external partners to advance research efforts and promote collaboration.
- Develop and maintain partnerships with international and other organizations to conduct LMR-climate workshops.
- Organize and host regional thematic workshops related to LMR response to climate change (regime shift, distribution shift, vital rates, etc.).
- Conduct research to identify a suite of proposed mitigation strategies, including those targeted at LMR-dependent human communities.
- Strengthen core science partnerships with formal mechanisms, especially with academic institutions, NASA, USGS, NSF, EPA, etc.

Although more process research could be conducted to inform management decisions, and although copious uncertainty about species performance in a changing climate context persists, common themes and consistent patterns related to climate change could provide the basis upon which NOAA Fisheries can act. Not knowing a particular functional form, mechanistic detail, or relationship between LMR responses and climate variables should not preclude NOAA Fisheries from acting in situations that have generally known LMR and ecosystem response trajectories.

## Partnerships Are Critical To Understanding and Responding to Changing Conditions

One of NOAA Fisheries' key sources and partners for climate-related information is the NOAA Office of Oceanic and Atmospheric Research (OAR). NOAA Fisheries and OAR scientists have collaborated successfully for decades to better understand past, current and possible future impacts of climate variability and change in marine and coastal ecosystems. Sustaining and expanding these cross-NOAA partnerships is essential for addressing multiple objectives in this Strategy.



An outstanding example of this collaboration is the EcoFOCI (Ecosystems & Fisheries-Oceanography Coordinated Investigations) program. EcoFOCI is a joint venture between the Alaska Fisheries Science Center and the OAR Pacific Marine Environmental Laboratory to provide information on current and possible future climate impacts on the Bering Sea marine ecosystem for use in fisheries management and protected species conservation.

EcoFOCI researchers work to track changes climate-related changes in ocean conditions, improve understanding of how changes in ecosystem functioning (atmospheric, oceanographic, biological) impact fish stocks (recruitment, abundance, distribution) and food webs for use in management considerations. To do this, the EcoFOCI maintains the region's longest running climate/ocean monitoring program - a system of moored bouys that has provided critical information on past and current Bering Sea climate/ocean conditions for over 20 years. The system has been providing year-round measurements of temperature, salinity, nitrite, chlorophyll, and currents in this highly productive area since 1994. These measurements are used in annual report cards and stock assessments provided to the North Pacific Fishery Management Council. Long-term time-series at this site are a critical tool for adapting to climate change and guiding sustainable management of living resources in the Bering Sea.

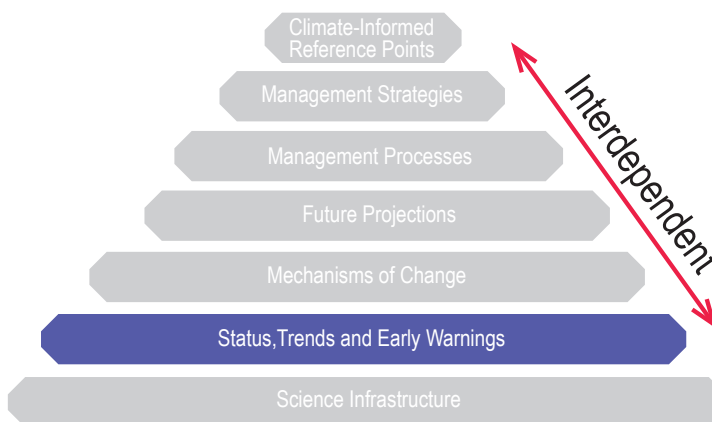
EcoFOCI combines these monitoring efforts with research initiatives to better understand the implications of climate/ocean changes on fish stocks. For example, in the Bering Sea, studies are underway that connect climate-mediated oceanographic shifts to energy transfer through the food web and ultimately to fisheries population fluctuations. In the Arctic ecosystems (Chukchi Sea, Beaufort Sea), research on changes in sea ice, oceanography, plankton, fish and marine mammals are supplemented with data derived from long-term oceanographic mooring arrays to identify the mechanisms of climate impacts in these systems. By combining long term monitoring with targeted research, this collaborative program is providing decision makers with much needed information on current and possible future conditions that is being actively used in fisheries management and protected species conservation.

For more information see:

<http://www.pmel.noaa.gov/project/ecosystem-fisheries-oceanography-coordinated-investigations>

## Objective 6: Track trends in ecosystems, LMRs, and LMR-dependent human communities and provide early warning of change.

Information on the status and trends of ecosystems, LMRs, and LMR-dependent human communities is essential to tracking and providing early warning of the impacts of climate change. This information is the foundation of sound science advice and sustainable management of LMRs under changing conditions. NOAA Fisheries has excelled at producing data-based assessments of LMR status and trends for science-based management. Some of these assessments explicitly incorporate climate change data, but most do not. NOAA Fisheries has three main needs related to this objective:



- Monitoring programs to track LMRs, ecosystem dynamics, and LMR-dependent human communities.
- Development of good physical, biological, and socio-economic indicators for tracking trends related to climate change and early warning signals of change.
- Regular reports to present and interpret monitoring data while considering the effects of climate change.

Climate change related biophysical data—such as observed trends in water temperature, upwelling indices, sea level height, biogeochemistry, food web structure, or regional hydrology—need to be regularly incorporated into LMR, ecosystem, and habitat status reports. These form the basis from which links between change in physical conditions and biotic variables can be established (Figure 2). Information on the status and trends of ecosystems, LMRs, and resource-dependent communities is needed to modify management reference points for LMRs, habitats, ecosystems, and human communities to incorporate climate change and its impacts (e.g., NOAA Office of Coastal Management 2014).

An important and regular product should be ecosystem status reports (ESRs and related ecosystem advisories, chapters, etc.). ESRs provide multi-dimensional examination of the ecosystem from physical and habitat condition to trends in LMR abundance and resource use by fleets and communities.<sup>9</sup> Typically they include brief narratives describing trends within the numerous time series analyses presented. Even apart from formal modeling through to specific biological reference points, the information provided in these ESRs has been useful for providing broader context and as leading indicators to inform LMR management.

ESRs are critical tools for tracking and preparing for change in marine and coastal ecosystems. ESRs should be fully developed in all NOAA Fisheries regions to provide managers with up to date information on current conditions and early warnings of impending changes in ecosystem conditions. Building on existing efforts, ESRs should be enhanced by interpreting detected changes within the current understanding of ecological processes of each large marine ecosystem. Adding climate change projections to these status

<sup>9</sup> <http://www.noaa.gov/iea/>

## Changing climate implications on the food web

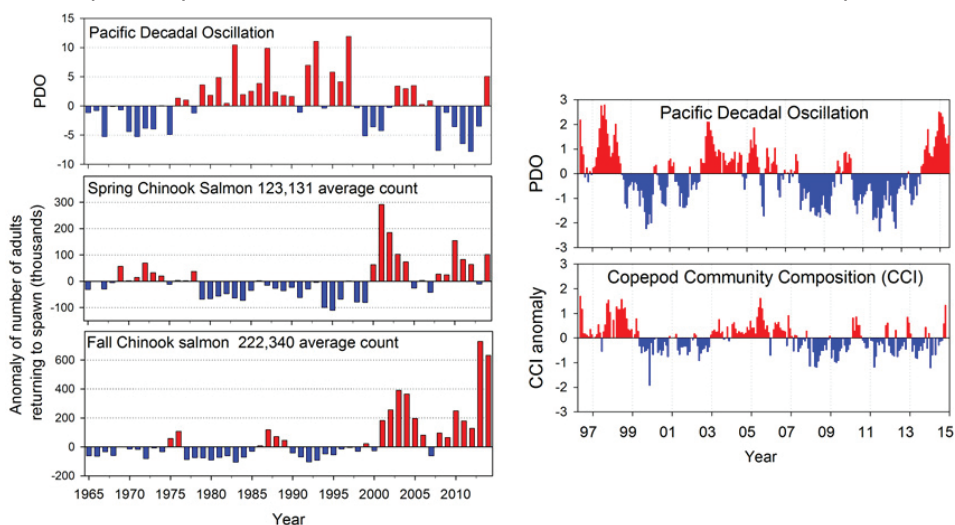
### The Pacific Decadal Oscillation, Food Chain Structure, and Salmon Returns to the Columbia River

Mantua et al. (1997) showed that changes in the sign of the Pacific Decadal Oscillation (PDO, a basin scale climate indicator) translate into changes in salmon returns (a local response) throughout the North Pacific. When the PDO is in a warm phase, returns are relatively low for salmon that spawn in the Columbia River system and other rivers that discharge into the California Current. The opposite is true during the cool phase of the PDO. This is illustrated below, where it is shown that from 1980 through 1998, the PDO was in warm phase (red bars) and salmon returns were below average (blue bars). When the PDO turned negative (to cool phase) in late 1998, salmon returns rebounded with a 2-year lag for spring Chinook (which spend 2 years at sea) and with a 3-year lag for fall Chinook (which spend 3 years at sea). The PDO changed sign again in 2003 (warm phase) and 2008 (cool phase), and salmon again responded predictably to these changes. (<http://www.nwfsc.noaa.gov/> and click on "Salmon Forecasts")

A mechanism for these sudden changes in salmon returns was offered recently by Hooff and Peterson (2006) and Keister et al. (2011). They showed that changes in zooplankton (copepod) community composition were closely linked with the PDO. Further, they pointed out that cold-water copepod communities are dominated by species that are relatively large and enriched with lipids, especially omega-3 fatty acids, which are needed and desired by young salmon.

Hooff and Peterson (2006) and Keister et al. (2011) hypothesized that the mechanism linking the PDO with salmon returns is related to the source waters that feed the northern California Current and the species composition of copepods in these source waters. During negative PDO, the bulk of the water entering the northern California Current is from the coastal Gulf of Alaska and the zooplankton are dominated by large lipid-rich copepods; when the PDO is in positive phase, the source waters are from offshore and small subtropical

copepods (which lack significant amounts of lipids) are transported to the northern California Current. Salmon returns are high during the cool phase of the PDO because the food chain is bio-energetically enriched with lipids from the cold-water copepods and these lipids are transferred up the food chain, through the krill and forage fish upon which salmon feed.



**Figure 12: (Left) PDO and returns of Columbia River spring and fall Chinook over time (NOAA Northwest Fisheries Science Center 2014). (Right) PDO and copepod community composition index anomaly over time (from Keister et al. 2011; Batchelder et al. 2013, with updated data from B. Peterson, NOAA NWFSC).**

reports is an important need and will provide information about the projected future states of the ecosystem. Integrating data-sets of climate change that are current, are specific to the management tasks, and represent state-of-the-art understanding requires that synthesis products be developed and regularly updated.

ESRs are high return on investment products that meet shared information requirements of multiple NOAA Fisheries stewardship mandates. They are an essential tool for providing customized information and early warnings of climate impacts on LMRs in each region, and provide the foundation for synthesizing information across regions to assess nation-wide changes and impacts.

Deciding on which indicators to include in an ecosystem status report requires knowledge of ecosystem structure and function, the biogeochemical processes that influence the ecosystem, human use of and impacts on the ecosystem, and vulnerability of the ecosystem and LMR-dependent communities to climate change. Investing time and resources into the evaluation and development of useful indicators is an important task to undertake when designing ecosystem-climate observing systems and ecosystem status reports (Peterson et al. 2014). Necessary new indicators of change could be identified as the impacts of climate change develop.

Further, the biological and physical indicators developed from ESRs can be used to establish future thresholds and decision criteria (Samhouri et al. 2010; Fay et al. 2013; Large et al. 2013). This empirical exploration of ecosystem, habitat, and aggregate groups of LMR BRPs has been solidly rooted in such indicators. The full suite of multidimensional data can be noisy and typically incorporates multiple patterns (e.g., warming trend overlaid on El Niño-Southern Oscillation and Pacific Decadal Oscillation). Complex statistical techniques can distinguish the multiple drivers of change through time series analysis and are used to isolate signals in the data. Such statistical and analytical methods are relatively novel, and technique development could also advance NOAA Fisheries understanding of ecosystem state.

The detection and reporting of status and trends of physical and biological data could also provide commonly needed climate-related data inputs for LMR and ecosystem models. These data vectors or matrices can serve as direct inputs, covariates, data modifiers, parameter tuning sets, or similar value in a host of LMR and ecosystem models.

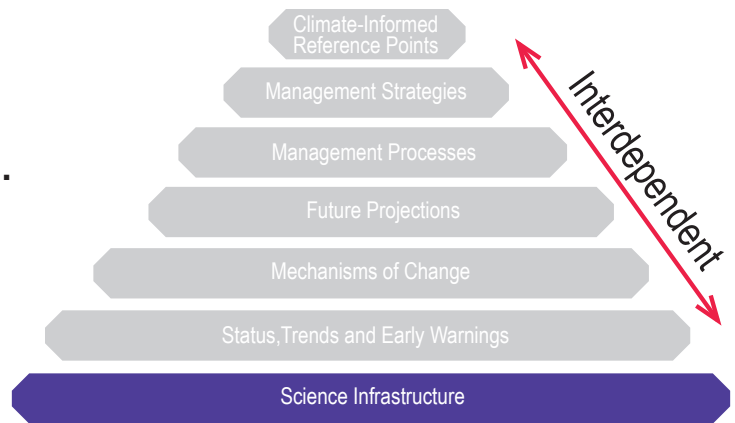
Important strategies to bolster current status estimates include:

- Utilize climate vulnerability risk analyses to conduct triage and prioritization for climate change science related to LMR management.
- Develop and maintain standard climate-LMR report cards (i.e., ESRs) to communicate data and understanding to all stakeholders.
- Conduct regional assessments of strengths, weaknesses, opportunities, and challenges related to LMR science and management in the face of climate change.
- Emphasize the critical need for ongoing monitoring in science planning and budgeting processes.
- Train staff in multi-variate time-series analyses.
- Engage in scoping exercises related to LMR science and management in the face of climate change with partners and constituents. Partner with outside organizations to help collect and share data.

## Objective 7: Build and maintain the science infrastructure needed to fulfill NOAA Fisheries mandates under changing climate conditions.

Adequate scientific infrastructure is critical to the science enterprise described in this Strategy. However, NOAA Fisheries existing infrastructure is not yet adequate to meet those science needs. Here, we identify existing programs that should be

better coordinated, or expanded to meet the needs outlined in the Strategy with minimal disruption to NOAA Fisheries as it fulfills its mandates. Clearly there is a general need for increased capacity (and expanded partnerships) to link climate change and LMRs. But what would that entail?



Observational data on the physical and chemical conditions that freshwater, coastal, and marine organisms experience in their environment are a fundamental part of understanding species response to ocean and climate change. While NOAA Fisheries supports a variety of biological, physical, and human system monitoring efforts that inform fisheries and ecosystem management, these efforts fall short of what is needed to adequately track the impacts of climate change. An enhanced system that inventories current observing efforts, identifies gaps in these efforts, fills gaps with new observations, makes data readily available to scientists and stakeholders, and allows integration across data types collected in the system is required to meet NOAA Fisheries needs today and in the future. Doing so would provide the data needed to deliver core information on the status and trends of marine, coastal, and freshwater ecosystems and human systems under climate change, and could provide early warnings of rapid or impending changes.

Building and maintaining an adequate physical, chemical, and biological observing system will require a variety of critical science infrastructure, including ship time, remote observing assets, establishment of key partnerships, and personnel to collect and process samples. Ideally, a large component of the modified observing system would be ongoing fisheries oceanography and LMR monitoring time series, but paired with simultaneous physical-chemical observations in both marine and freshwater systems. Building and maintaining an adequate observation system for fishing- and LMR-dependent community resource use and overall well-being will require a similar amount of effort given the sheer amount of time required to collect and analyze socio-economic data. Where gaps exist between projected needs and ongoing time series, to the extent feasible, NOAA Fisheries should increase support for existing activities and initiate new observational time series to generate data relevant to managing LMRs and human communities over the coming decades. Ideally, observing efforts would include concurrent, integrated, interdisciplinary collection of physical, chemical, biological, and socio-economic data.

To succeed in implementing the Strategy, NOAA Fisheries will need to evaluate and possibly adopt novel and advanced sampling approaches and invest in enhanced computing technologies and laboratory assets. Taking advantage of the efficiencies and precision these devices can provide will open up new data-sets requisite for tracking climate change (e.g., underwater gliders to measure physical and chemistry conditions, accurate and precise ocean carbon chemistry sensors, and acoustic monitoring of fish populations).

Many of the observing systems and modeling exercises described above, especially future projections and hind-casting, require computing systems that can store large data-sets and are fast enough to complete scenarios in a reasonable amount of time. Expansion of computing systems is required to meet these needs. Collection of high-quality species-response data will require laboratories with specialized equipment and animal holding facilities to elucidate physiological and genetic responses of LMR's to future conditions (e.g., Northwest Fisheries Science Center's ocean acidification experimental system).

Improved data access and data visualization tools are necessary for fully sustaining and supporting the science enterprise outlined in the Strategy and implementing the Strategy successfully over time. Maintaining data archives accessible inside and outside of NOAA Fisheries, as appropriate, with appropriate database infrastructural elements is one step towards doing so. Development of data visualization tools would facilitate the uptake and understanding of data related to climate change.

Staffing considerations are key for addressing this strategy. Dedicated LMR-climate staff are needed in the Science Centers and Regional Offices to help produce, deliver, and use climate-related information in fulfilling NOAA Fisheries mission activities. There is also a need for training and development of analytical capacity for NOAA Fisheries personnel. Research and provision of climate-smart management advice is predicated upon a workforce with the vision, understanding, and capability to analytically address the needs described throughout this Strategy. Additional analytical billets, quantitative training, and increased awareness of climate-change needs are warranted to increase the production, delivery, and use of climate-related information in fulfilling NOAA Fisheries mission activities.

Many entities outside of NOAA Fisheries collect data, conduct research, build models, and develop predictions that are useful for projecting future states of LMRs, habitats, ecosystems, human communities, and their use of LMRs under climate change (Table 2). Communication of the utility of these resources and their contribution to NOAA Fisheries LMR mandates should be highlighted by NOAA Fisheries. NOAA Fisheries has a foundation of partnerships within NOAA and with other entities (e.g., state and other federal agencies, academia, industry, etc.; Table 2). Building on and strengthening these internal and external foundations are a critical component of developing an efficient and comprehensive capacity for modeling future states. Gaps in scope and capacity of NOAA Fisheries programs will need to be filled by expanding existing, and establishing new, partnerships with programs outside the agency.

Important strategies to bolster and better deliver climate-smart science infrastructure include:

- Increase the Fisheries Oceanography (e.g. Fisheries and the Environment (FATE), and Integrated Ecosystem Assessment (IEA)) program budgets, including investment in socio-economic research.
- Maintain 10 percent of overall NOAA Fisheries science budget directed to process-oriented research.
- Establish dedicated climate-LMR FTEs at each fisheries Science Center with a portion of their time dedicated to coordinating with managers in NOAA Fisheries Regional Offices through regional teams.
- Bolster NOAA Fisheries climate-LMR coordination nationally.
- Continue and expand NOAA Fisheries participation in cross-governmental efforts related to climate change.
- Increase partnerships with the Ocean Observing networks, Sea Grant, and regional climate centers.

## **CHAPTER 3**

### **Moving Forward**

Given the scale of U.S. dependence on LMRs- and the expected pace, scale, and scope of climate-related impacts on marine, coastal, and freshwater ecosystems-immediate action is needed to understand, prepare for, and respond to these changes in ways that reduce impacts and increase resilience of LMRs for current and future generations (Osgood 2008; Intergovernmental Panel on Climate Change 2013; Melillo et al. 2014). This Strategy provides a blueprint for increasing the production, delivery, and use of the climate-related information needed to fulfill NOAA Fisheries mandates in a changing climate. It is intended to provide a national framework that can be regionally tailored and implemented through NOAA Fisheries Science Centers, Regional Offices, and their partners via existing planning processes. Implementation of the Strategy over the next 3-5 years is critical for effective fulfillment of the NOAA Fisheries mission and mandates in a changing climate.

This Strategy identifies seven priority objectives and specific actions to address them. Many of the recommendations are designed to address common needs across mandates, regions, and LMRs, so implementation of these items could have especially high utility and return on investment. While some impacts of climate change on LMRs are shared across regions, each region has a unique combination of climate-related challenges, capabilities, and information needs that will need to be assessed as part of developing Strategy implementation plans for each region. The seven objectives are intended to identify areas that should be addressed by each region, although the specific actions and priorities should be determined by science and management experts in each region.

The Strategy is designed to provide a consistent, national framework that is primarily implemented through regional action plans. The regional action plans should focus on building regional capacity, products, and services under the seven priority objectives based on evaluation of regional, climate-related, LMR information needs, and of the existing strengths, weaknesses, opportunities, and challenges to address them. While the particular timeline for implementation will depend on specific budget realities, regional action plans are expected to guide implementation of this Strategy through a variety of means, including adjustments to programs within existing budgets and initiation of additional efforts using new resources.

In developing this Strategy, a variety of science and information needs came up repeatedly as priorities to be addressed because they were common needs across many mandates and regions. Addressing these needs is key to meeting a variety of other requirements and, if filled, would advance climate-ready LMR management over the next 3-5 years.

The following is a list of recommendations to help implement this Strategy. Implementing these recommendations will efficiently and effectively increase the production, delivery, and use of climate-related information in NOAA Fisheries LMR management and thereby reduce impacts and increase resilience of LMRs and the people that depend on them.

### **PRIORITY ACTIONS:**

Three main products or activities consistently emerge across all seven priority objectives in the Strategy. We highlight these here as the prioritized actions that will best help NOAA Fisheries address its mandates in a more



climate-ready manner. We recommend these be adopted and executed as soon as is appropriate, given the other, more time-constrained or infrastructural needs subsequently identified below.

1. Conduct climate vulnerability analyses in each region for all LMRs.
2. Establish and strengthen ecosystem and socio-economic indicators and status reports in all regions.
3. Develop capacity to conduct management strategy evaluations regarding climate change impacts on management targets, priorities, and goals.

## **PRIORITY NEAR-TERM ACTIONS:**

The following are key near-term recommendations to advance implementation of this Strategy in the 6 to 24 months after the release of this report:

1. Strengthen climate-related science capacity within each region and nationwide.
  - a. Bolster national and region-level capacity for implementing the Strategy and advancing LMR-ecosystem-climate initiatives to support implementation
  - b. Establish dedicated LMR-climate leads at Science Centers and Regional Offices to increase coordination, priority setting, evaluation, and implementation of the Strategy at regional levels.
  - c. Establish regional climate-LMR teams composed of Science Center, Regional Office, and external partners to help strengthen the production, delivery, use, and evaluation of climate-related information in LMR management.
  - d. Strengthen production and delivery of output from climate-driven regional ocean models used for projecting climate impacts on LMRs
  - e. Strengthen production and delivery of output from climate-driven regional models of temperature, precipitation, and other factors used for projecting climate impacts on LMRs in coastal and freshwater habitats.
2. Develop regional-level implementation plans to execute this Strategy based on Science Center, Regional Office, and external partners' assessment of:
  - a. Specific climate-LMR issues in the region.
  - b. Barriers to producing, delivering, and incorporating climate-related information into LMR management.
  - c. Major climate-related data and information gaps in the region.
  - d. Existing strengths, weaknesses, opportunities, and challenges to implement the Strategy.
3. Ensure that adequate resources are dedicated to climate-related, process-oriented research (target – 10% NOAA Fisheries Science Budget).
  - a. Initiate or expand partnerships with key science providers (e.g., OAR, NASA, USGS, NSF) to leverage and attract resources to help meet NOAA Fisheries climate-related science and information needs.
  - b. Leverage planned and new initiatives.
4. Establish standard, climate-smart terms of reference to apply to all of NOAA Fisheries LMR management, environmental compliance requirements, and other processes that cross multiple mandates and core policy areas.

## **PRIORITY MEDIUM-TERM ACTIONS:**

The following are key medium-term recommendations to advance implementation of this Strategy. These are intended to be ongoing with significant progress (e.g., first phase completed) within 2 to 5 years after the release of this report:

### Workshops and training

1. Establish regular, NOAA-wide, national, climate-science workshops with LMR emphasis, with a focus on climate-ready BRPs and science for setting Harvest Control Rules, ESA evaluations (section 7 and section 10), essential fish habitat consultations, aquaculture, and NEPA analyses in a changing climate.
2. Increase awareness of and training for NOAA Fisheries science and management staff on the impacts of climate change on LMRs and climate-informed LMR management practices.
3. Organize and conduct regime-shift detection workshops for each region.
4. Organize and conduct distribution shift workshops, with implications for stock and population identification and unit area across all LMRs in each region.
5. Organize and conduct vital rate workshops, with implications for LMR life-history parameters across all LMRs in each region.
6. Organize and conduct workshops aimed at identifying regional data gaps (biological, physical, and socio-economic) related to climate variability and change and devising data collection programs aimed at filling those gaps, especially socio-economic gaps.

### Engagement and outreach

7. Develop and execute national and regional science communication plans for increasing dissemination of climate-related LMR science and information to technical users and other interested stakeholder audiences.
8. Expand and support engagement with international partners to advance the production, delivery, and use of climate-related information (e.g., Climate-LMR related workshops, symposia, meetings, etc.) with specific focus on climate-informed biological reference points, climate-smart Harvest Control Rules, management strategy evaluations for climate-ready LMR management (including species and habitat recovery) and, climate-smart protected species and habitat consultations.
9. Continue and expand NOAA Fisheries participation in cross-governmental, national efforts to advance climate-related science.

### Science to inform policy

10. Work with partners to re-evaluate risk policies under changing climate and ocean conditions.
11. Establish science-based approaches for shifting biological reference points to account for changing productivities, distributions, and diversities.
12. Conduct management strategy evaluations on climate scenarios in extant ecosystem and population models in conjunction with the NOAA IEA program, NOAA Fisheries Stock Assessment Improvement Plan Update/Next Generation Stock Assessment, NOAA Fisheries Protected Resources Stock Assessment Improvement Plan, and development of ESA Five-Year Status Reviews.
13. Establish science-based thresholds for exiting and entering fisheries.
14. Establish and implement clear policies and practices for incorporating climate change into all NEPA and ESA (i.e., listing, recovery planning, interagency consultations, and permitting) activities.

15. Establish and implement standards and guidelines for incorporating climate change information into Fisheries Management Plans and Fisheries Ecosystem Plans.
16. Develop and implement standards and practices to promote climate resilience and climate mitigation in NOAA Fisheries habitat conservation activities.
17. Develop climate-driven regional ocean models for use in projecting climate impacts on LMRs.

#### Science planning and management

18. Develop a national inventory of key science and information gaps related to NOAA Fisheries LMR and socio-economic responsibilities, building on regional data/information gap assessments.
19. Increase support for existing programs addressing priority needs and objectives identified in this Strategy (e.g., Fisheries Oceanography, FATE, and IEAs).
20. Establish common climate-smart input data vectors/matrices for inclusion in LMR assessments in conjunction with NOAA Fisheries Stock Assessment Improvement Plan Update/Next Generation Stock Assessment and Protected Resources Stock Assessment Improvement Plan, and development of ESA Five-Year Status Reviews.
21. Identify and support process research linking changing climate and ocean conditions to LMR dynamics.
22. Identify and maintain capability to execute oceanographic cruises for climate-smart observations and process research.
23. Increase capability to undertake climate-smart, socio-economic research projects and analyses of human uses of LMRs and their ecosystems.
24. Develop climate-resilient and climate-mitigating aquaculture strategies.

## SUMMARY

Changes in the planet's climate system are affecting the nation's valuable marine, coastal, and freshwater LMRs. These impacts are expected to significantly increase with continued changes in the climate system. These impacts will affect the valuable services LMRs provide the nation; the many people, businesses, and communities that depend on them (Osgood 2008; Doney et al. 2012; Melillo et al. 2014); and NOAA Fisheries LMR management efforts.

This Strategy presents seven key objectives to increase the production, delivering and use of climate-related information needed to fulfill NOAA Fisheries mission in a changing climate. The Strategy is part of a broader effort that includes adopting ecosystem-based management to strengthen NOAA Fisheries capacity to fulfill its mandates (MacLeod and Leslie 2009; Link 2010). It identifies a series of high utility actions that will meet information needs across multiple mandates and should be given high priority for near-term implementation. When implemented, these efforts will deliver high value information, tools and approaches to address priority needs across mandates, regions, and LMRs. The commonality of information needed across mandates should be useful to gain efficiencies in how that material is produced and delivered.

The Strategy identifies actions that NOAA Fisheries can do now that will yield a high return on investment. Additional actions will be needed over the next 3-5 years to fully implement the strategy. Addressing these science and management challenges will require cross-cutting efforts that span NOAA Fisheries LMR stewardship mandates (Figure 4), as well as increased collaborations and contributions from many NOAA Fisheries partners (Table 2).

## GLOSSARY

**Adaptation:** (1) An adjustment in natural or human systems to a new or changed environment that exploits beneficial opportunities or moderates negative effects (Melillo et al. 2014); (2) Minimizing the impact of climate change on fish and wildlife through the application of cutting-edge science in managing species and habitats (U.S. Fish and Wildlife Service 2010).

**Biological Reference Point(s):** A biological benchmark against which the abundance of the stock or the fishing mortality rate can be measured in order to determine its status. These reference points can be used as limits or targets, depending on their intended usage (Blackhart et al. 2006).

**Calcite saturation states:** (The availability of carbonate ions is crucial for marine calcifying organisms to form their skeletons or shells that are made of different crystalline forms of calcium carbonate, such as calcite and aragonite. Aragonite is more soluble than calcite. Thus, the saturation state of aragonite can be taken as an indicator for ocean acidification. Website: <http://iprc.soest.hawaii.edu/>)

**Climate Change:** Refers to a change in the state of the climate that can be identified (e.g., by using statistical tests) by changes in the mean and/or the variability of its properties, and that persists for an extended period, typically decades or longer (Intergovernmental Panel on Climate Change 2007).

**Climate-smart Harvest Control Rules:** A set of well-defined pre-agreed rules or actions used for determining a management action in response to changes in indicators of stock status with respect to reference points in a commercial or recreational fishery. Climate smart HCRs are the same but are based on reference points that incorporate climate considerations in their estimation, and/or account for climate impacts in adjustments to their rules, policy or actions.

**Climate System:** The climate system is the highly complex system consisting of five major components: the atmosphere, the hydrosphere, the cryosphere, the lithosphere and the biosphere, and the interactions between them. The climate system evolves in time under the influence of its own internal dynamics and because of external forcings such as volcanic eruptions, solar variations and anthropogenic forcings such as the changing composition of the atmosphere and land use change (Intergovernmental Panel on Climate Change 2013).

**Climate Variability:** Refers to variations in the mean state and other statistics of the climate on all temporal and spatial scales beyond that of individual weather events or seasons (Intergovernmental Panel on Climate Change 2007).

**Diadromous:** Diadromous species spend part of their life-cycle in fresh water and other part in salt water. Diadromous is the term used to refer to anadromous, catadromous, or amphidromous species.

**Ecosystem connectivity:** Ecosystem connectivity is the degree to which the marine ecosystem facilitates or impedes movement among different habitats. Connectivity includes both structural connectivity (the physical arrangements of habitats) and functional connectivity (the movement of individuals among habitats). The degree to which an ecosystem is connected determines the amount of dispersal among habitats, which influences gene flow, local adaptation, extinction risk, colonization probability, and the potential

for organisms to move as they cope with climate change.

**Ecosystem-Based Management:** Ecosystem-Based Management is an integrated approach to management that drives decisions at the ecosystem level to protect the resilience and ensure the health of the ocean, our coasts, and the Great Lakes. Ecosystem Based Management is informed by science and draws heavily on natural and social science to conserve and protect our cultural and natural heritage, sustaining diverse, productive, resilient ecosystems and the services they provide, thereby promoting the long-term health, security, and well-being of our Nation (Ocean Research Advisory Panel 2013).

**Fisheries Ecosystem Plan (FEP):** An umbrella document containing information on the structure and function of the ecosystem in which fishing activities occur, so that managers can be aware of the effects their decisions have on the ecosystem, and the effects other components of the ecosystem may have on fisheries. The document(s) strives to provide Council members with a clear understanding regarding 3 main concepts. First, the biological, physical and human/institutional context of ecosystems in which fisheries are managed. Second, direct how that information should be used in the context of FMPs. Finally, set policies by which management options would be developed and implemented.

**Fisheries Management Plan:** A document prepared under supervision of the appropriate fishery management council for management of stocks of fish judged to be in need of management. The plan must generally be formally approved. A Fisheries Management Plan includes data, analyses, and management measures. A plan containing conservation and management measures for fishery resources, and other provisions required by the Magnuson-Stevens Act, developed by regional fishery management councils or the Secretary of Commerce (Blackhart et al. 2006).

**Greenhouse Gas:** A gas in the atmosphere of natural or human origin that absorbs and emits thermal infrared radiation. Water vapour, carbon dioxide, nitrous oxide, methane and ozone are the main greenhouse gases in the Earth's atmosphere. Their net impacts is to trap heat within the climate system (Intergovernmental Panel on Climate Change 2013).

**Harvest Control Rule:** A set of well-defined pre-agreed-upon rules or actions used for determining a management action in response to changes in indicators of stock status with respect to reference points.

**Integrated Ecosystem Assessment:** An Integrated Ecosystem Assessment is a formal synthesis and quantitative analysis of information on relevant natural and socio-economic factors in relation to specified ecosystem management goals. It involves and informs citizens, industry representatives, scientists, resource managers, and policy-makers through formal processes to contribute to attaining the goals of an ecosystem approach to management (Levin et al. 2008).

**Intensity of upwelling and downwelling:** Upwelling intensity depends on wind strength and seasonal variability, as well as the vertical structure of the water column, variations in the bottom bathymetry, and instabilities in the currents. Upwelling is the upward motion of cold, nutrient rich deep water along the coast. Downwelling involves the downward motion of warm surface waters along the coast. (NOAA: <http://oceanservice.noaa.gov/facts/upwelling.html>)

**Large Marine Ecosystem:** Large Marine Ecosystems are large areas of ocean space, approximately 200,000 km<sup>2</sup> or greater, that have been identified for conservation purposes. They are located in coastal waters characterized by unique species, levels of productivity, bathymetry, and hydrography (Blackhart et al. 2006).

**Management Strategy Evaluation:** The evaluation of a strategy adopted by the management authority to reach established management goals. In addition to the objectives, it includes choices regarding all or some of the following: access rights and allocation of resources to stakeholders, controls on inputs (e.g., fishing capacity, gear regulations), outputs (e.g., quotas, minimum size at landing), and fishing operations (e.g., calendar, closed areas, and seasons) (Blackhart et al. 2006).

**Maximum Sustainable Yield (MSY):** MSY is the largest long-term average catch or yield that can be taken from a stock or stock complex under prevailing ecological, environmental conditions and fishery technological characteristics (e.g., gear selectivity), and the distribution of catch among fleets. MSY is usually estimated in stock assessments.

**Mitigation:** Implementing actions to reduce greenhouse gas emissions or increase the amount of carbon dioxide absorbed and stored by natural and man-made carbon sinks (Melillo et al. 2014).

**Mixed layer depth:** The surface layer of the ocean that is mixed by the action of wind, waves and tides so that the waters are nearly isothermal and isohaline; underlain by a pycnocline.

**Nutrient availability:** Chemicals (such as nitrogen and phosphorus) that plants and animals need to live and grow. At high concentrations, particularly in water, nutrients can become pollutants.

**Ocean acidification:** Ocean acidification refers to a reduction in the pH of the ocean over an extended period, typically decades or longer, which is caused primarily by uptake of carbon dioxide from the atmosphere, but can also be caused by other chemical additions or subtractions from the ocean. Anthropogenic ocean acidification refers to the component of pH reduction that is caused by human activity (Intergovernmental Panel on Climate Change 2013).

**Ocean Circulation:** The large-scale movement of waters in the ocean basins. Winds drive surface circulation, and the cooling and sinking of waters in the polar regions drive deep circulation.

**Potential Biological Removal:** Defined by the MMPA as the maximum number of animals, not including natural mortalities, that may be removed from a marine mammal stock while allowing that stock to reach or maintain its optimum sustainable population. The Potential Biological Removal level is the product of the following factors: the minimum population estimate of the stock; one-half the maximum theoretical or estimated net productivity rate of the stock at a small population size; and a recovery factor of between 0.1 and 1.0 (NOAA Fisheries Office of Protected Resources 2014).

**Projection:** The potential evolution of a quality or set of quantities, often computed with the aid of a model. Projections are distinguished from predictions in order to emphasize that projections involve assumptions—concerning, for example, future socio-economic and technological developments, that may or may not be realized and are therefore subject to substantial uncertainty (Intergovernmental Panel on Climate Change 2007)

**Resilience:** Capacity of a natural system (fisheries community or ecosystem) to recover from heavy disturbance such as intensive fishing (Blackhart et al. 2006).

**Salinity:** The weight of dissolved salts in a kilogram of seawater. Because the total amount of salt in the ocean does not change, the salinity of seawater can be changed only by addition or removal of fresh-water. (IPCC, 2013 pg. 265)

**Scenario:** A plausible and often simplified description of how the future may develop based on a coherent and internally consistent set of assumptions about key driving forces (e.g., rate of technology change, prices) and relationships. Scenarios are neither predictions nor projections and sometimes may be based on a “narrative storyline.” Scenarios may be derived from projections but are often based on additional information from other sources (Blackhart et al. 2006).

**Sensitivity:** The degree to which a system is affected, either adversely or beneficially, by climate variability or climate change. The effect may be direct (e.g., a change in population size in response to a change in the mean, range, or variability of temperature) or indirect (e.g., damages caused by an increase in the frequency of coastal flooding due to sea level rise) (adapted from Intergovernmental Panel on Climate Change 2007).

**Vulnerability:** The degree to which a system is susceptible to, or unable to cope with, adverse effects of climate change, including climate variability and extremes. Vulnerability is a function of the character, magnitude, and rate of climate variation to which a system is exposed and its adaptive capacity (Melillo et al. 2014).

**Wind mixing:** Wind blowing across the surface of the water generates turbulence, which effectively stirs or mixes the upper layer of the water column. This process helps to maintain a relatively uniform distribution of temperature, salinity and oxygen in the upper layer, appropriately called the ‘wind-mixed layer’ or simply ‘mixed layer’. Changes in wind intensity impact the depth of the layer and changes in the amount of turbulence has both positive and negative impacts on organisms that live near the surface.



## TABLES

Table 1. Key mandate areas for NOAA Fisheries, with notes on authorities, objectives, thresholds, regulatory devices, and analytical frameworks. In general, fulfilling these NOAA Fisheries mandates requires consideration of the impacts of climate and other environmental conditions on LMRs.

	<b>NOAA Fisheries Mandated Areas of Emphasis</b>				
	<i>Fisheries</i>	<i>Protected Species</i>	<i>Aquaculture</i>	<i>Habitat</i>	<i>Ecosystems</i>
<b>Primary Authorizing Mandates</b>	Magnuson-Stevens Act	Endangered Species Act	National Aquaculture Act	Magnuson-Stevens Act	National Environmental Policy Act
		Marine Mammal Protection Act		Endangered Species Act	National Ocean Policy
				Others*	Others**
<b>Primary Objectives</b>	Prevent overfishing, rebuild overfished stocks, realize full potential benefit to the nation	Conserve, protect, and recover protected marine life and the ecosystems on which they depend	Provide for the development of aquaculture in the United States	Preserve, protect, develop, and where possible, restore or enhance habitat	Consider environmental and socio-economic impacts and evaluate cumulative effects when enacting policies and planning action
<b>Primary Thresholds</b>	Annual Catch Limits (and Targets) linked to Optimal Yield †	Minimum Viable Population linked to Extinction Risk†† Appreciable reduction in population viability††	Cost-benefit ratio linked to economic and ecological viability	Fractional Areas of Degraded Habitat (or loss of essential habitat features)	Integrative Ecosystem Indicator Thresholds linked to Pressures

		Recovered Populations (Optimal, Sustainable, Viable) ††			Cumulative Production
<b>Main regulatory or management delivery-devices to achieve objectives</b>	Fishery Management Plans	Section 4 Listings Section 7 consultations, Section 10 take permits	Permitting of aquaculture farms	Restoration Plans Essential Fish Habitat Designation Section 7 consultations, Section 10 take permits	Environmental Impact Statements and Social Impact Assessments
	Rebuilding Plans	Conservation (Recovery) Plans	Site Reviews	Conservation (Recovery) Plans	Fishery Ecosystem Plans
				Site Reviews	
<b>Main analytical frameworks to develop thresholds</b>	Stock Assessments	Stock Assessments (Status Reviews)	Feasibility Assessments	Habitat Assessments	Integrated Ecosystem Assessments

\*e.g. Coastal Zone Management Act; Clean Water Act; Federal Power Act; Oil Pollution Act; Fish and Wildlife Coordination Act; Coastal Wetlands Planning, Protection, and Restoration Act; American Recovery and Reinvestment Act

\*\* Many individual Acts have included ecosystem considerations. The challenge is to simultaneously meet ecosystem objectives of each Act.

† proxied by biomass and fishing rate limits

†† or related parameters

**Table 2. Information collected by other entities that is useful for NOAA Fisheries management of living marine resources under a changing climate.**

Entity	Information
NOAA	
Oceans and Atmospheric Research	Physical and chemical ocean conditions Physical oceanographic models Coupled bio-physical models Climate monitoring and prediction
National Weather Service	Weather monitoring and prediction Storm monitoring and prediction
National Ocean Service	Shoreline monitoring Estuarine monitoring
National Environmental Satellite, Data, and Information Service	Ocean and coastal monitoring Sea ice monitoring Data management services
Integrated Ocean Observing System	Physical and chemical ocean conditions

Federal agencies	
National Aeronautics and Space Administration	Physical ocean monitoring Ocean productivity monitoring Ocean circulation monitoring
Environmental Protection Agency	Coastal monitoring
US Geological Service	Stream monitoring
US Department of Agriculture	Food/Seafood supply and demand
US Army Corps of Engineers	River monitoring
US Census Bureau	Demographics, employment, regional economic conditions
Industry	Fishing effort Bycatch information Aquaculture performance

Academia	Physical and chemical ocean conditions Species response to changing conditions Mechanistic studies Climate models Oceanographic models Ecosystem models Life-cycle models Social and economic models Management strategy evaluation
States	Coastal monitoring Data on state-managed fisheries
Tribes	Data on tribal-run fisheries Local traditional knowledge for on the ground changes
Countries	Data on national fisheries Data on fisheries in international waters

Table 3. Recommended strategies to address each objective

<p>Objective 1: Identify appropriate, climate-informed reference points for managing LMRs.</p> <ul style="list-style-type: none"> <li>● identify ecosystem-based reference points that include climate change and ecosystem information for all LMR management plans and strategies.</li> <li>● modify existing biological reference points that fail to include ecosystem considerations and assume that environmental conditions of the past will persist into the future;</li> <li>● communicate that ecosystem-based biological reference points improve accuracy, especially under climate change;</li> <li>● foster innovation in climate-smart scenario testing;</li> <li>● elucidate the positive opportunities associated with emerging LMRs; and</li> <li>● develop scientific underpinning for Environmental Impacts Statements for climate change in each region, including comprehensive socio-economic impact analyses.</li> </ul>
<p>Objective 2: Identify robust strategies for managing LMRs under changing climate conditions.</p> <ul style="list-style-type: none"> <li>● conduct management strategy evaluations and generate other information to allow risk-based policies to be re-evaluated under a changing climate; establish science-based approaches and policies for determining biological reference points and LMR and ecosystem productivities with changing climate and ecosystem conditions;</li> <li>● establish science-based thresholds and policies for dealing with the immigration and emigration of LMRs to/from ecosystems;</li> <li>● conduct more routine and regular LMR management strategy evaluations with NOAA Fisheries partners and constituents to provide science-based assessments of management options in a changing climate;</li> <li>● examine efficacy of proposed mitigation strategies; and</li> <li>● include human behavioral response or motivations into management design.</li> </ul>
<p>Objective 3: Design adaptive decision processes that can incorporate and respond to changing climate conditions.</p> <ul style="list-style-type: none"> <li>● design scientifically sound review-evaluation protocols that could ensure consideration of climate change as a standard part of LMR management advice;</li> <li>● develop and document the scientific basis for the need for climate change considerations in legislation or technical guidance;</li> <li>● identify the many ways that information and understanding related to climate change can be inserted into the management process; and</li> <li>● establish climate-ecosystem criteria that could become a standard part of review of LMR advice</li> </ul>

Objective 4: Identify future states of marine, coastal, and freshwater ecosystems, LMRs, and LMR -dependent human communities in a changing climate.

- develop a standard modeling toolbox or at least documented best practices to link future ocean and freshwater states and LMRs, with ability to couple models across types;
- establish best practices for modeling under uncertainty (e.g., multi-model inference);
- research socio-economic consequences of future climate scenarios and LMR, and explore range of probable human LMR-use responses; and
- build on past National Ecosystem Modeling Workshops (NEMoWs).

Objective 5: Identify the mechanisms of climate impacts on ecosystems, LMRs, and LMR-dependent human communities.

- identify process research gaps in each region
- develop additional NOAA process research capacity internally and through competitive funding opportunities
- develop and maintain partnerships to conduct climate-LMR-related research;
- organize and host regular national climate workshops with LMR emphasis for NOAA employees across line-office and external partners to advance research efforts and promote collaboration;
- develop and maintain partnerships with international and other organizations to conduct LMR-climate workshops;
- organize and host regional thematic workshops related to LMR response to climate change (regime shift, distribution shift, vital rates, etc.);
- conduct research to identify a suite of proposed mitigation strategies, including those targeted at LMR-dependent human communities; and
- strengthen core science partnerships with formal mechanisms, especially with academic institutions, NASA, USGS, NSF, EPA, etc.

Objective 6: Track trends in ecosystems, LMRs, and LMR-dependent human communities and provide early warning of change.

- utilize climate vulnerability risk analyses to conduct triage and prioritization for climate change science related to LMR management;
- develop and maintain standard climate-LMR report cards to communicate data and understanding available to all stakeholders;
- conduct regional assessments of strengths, weakness, opportunities, and challenges related to LMR science and management in the face of climate change;
- emphasize the critical need of ongoing monitoring in science planning and budgeting processes;
- train staff in time-series analyses; and
- engage in scoping exercises related to LMR science and management in the face of climate change with partners and constituents.

Objective 7: Build and maintain the science infrastructure needed to fulfill NOAA Fisheries mandates under changing climate conditions.

- increase the Fisheries and the Environment (FATE), Fisheries Oceanography, and IEA program budgets, including investment in socio-economic research;
- maintain 10% of overall NOAA Fisheries science budget directed to process-oriented research;
- establish dedicated climate-LMR FTEs at each fisheries Science Center with a portion of their time dedicated to coordinating with managers in NOAA Fisheries Regional Offices through regional teams;
- bolster NOAA Fisheries climate-LMR coordination nationally; and
- continue and expand NOAA Fisheries participation in cross-governmental efforts related to climate change.



## REFERENCES

- Anthony KRN, Kline DI, Diaz-Pulido G, Dove S, Hoegh-Guldberg O (2008) Ocean acidification causes bleaching and productivity loss in coral reef builders. *Proceedings of the National Academy of Sciences* 105: 17442-17446
- Baker JD, Howell EA, Polovina JJ (2012) Relative influence of climate variability and direct anthropogenic impact on a sub-tropical Pacific top predator, the Hawaiian monk seal. *Marine Ecology Progress Series* 469: 175-189
- Baker JD, Polovina JJ, Howell EA (2007) Effect of variable oceanic productivity on the survival of an upper trophic predator, the Hawaiian monk seal *Monachus schauinslandi*. *Marine Ecology Progress Series* 346: 277-283
- Barton A, Hales B, Waldbusser GG, Langdon C, Feely RA (2012) The Pacific oyster, *Crassostrea gigas*, shows negative correlation to naturally elevated carbon dioxide levels: Implications for near-term ocean acidification effects. *Limnol Oceanogr* 57: 698-710
- Batchelder HP, Botsford L, Daly K, Davis C, Ji R, Ohman M, Peterson W, Runge J (2013) Climate impacts on animal populations and communities in coastal marine systems: forecasting change through mechanistic understanding of population dynamics. *Oceanography* 26: 34-51
- Battin J, Wiley MW, Ruckelshaus MH, Palmer RN, Korb E, Bartz KK, Imaki H (2007) Projected impacts of climate change on salmon habitat restoration. *Proceedings of the National Academy of Sciences* 104: 6720-6725
- Bednaršek N, Feely RA, Reum JCP, Peterson B, Menkel J, Alin S, Hales B (2014) *Limacina helicina* shell dissolution as an indicator of declining habitat suitability due to ocean acidification in the California Current Ecosystem. *Proceedings of the Royal Society B: Biological Sciences* 281: 20140123
- Beechie T, Imaki H, Greene J, Wade A., Wu H, Pess G, Roni P, Kimball J, Stanford J, Kiffney P, Mantua N (2013) Restoring salmon habitat for a changing climate. *River Research and Applications* 329: 939-960
- Behrenfeld M (2011) Uncertain future for ocean algae. *Nature Climate Change* 1: 33-34
- Bell RJ, Hare JA, Manderson JP, Richardson DE. (2014) Externally driven changes in the abundance of summer and winter flounder. *ICES Journal of Marine Science*
- Blackhart K, Stanton DG, Shimada AM (2006) NOAA Fisheries glossary. US Dept. Commerce, NOAA Technical Memorandum NMFS-F/SPO-69
- Boughton DA, Pike AS (2013) Floodplain rehabilitation as a hedge against hydroclimatic uncertainty in a migration corridor of threatened steelhead. *Conservation Biology* 27: 1158-1168
- Boveng PL, Bengtson JL, Buckley TW, Cameron MF, Dahle SP, Kelly BP, Megrey BA, Overland JE, Wil-

liamson NJ (2009) Status review of the spotted seal (*Phoca larga*). NOAA Technical Memorandum. NMFS-AFSC-200

Brainard R, Birkeland C, Eakin C, McElhany P, Miller M, Patterson M, Piniak G (2011) Status review report of 82 candidate coral species petitioned under the U.S. Endangered Species Act. U.S. Dept. Commerce, NOAA Technical Memorandum, NOAA-TM-NMFS-PIFSC-27

Brainard RE, Weijerman M, Eakin CM, McElhany P, Miller MW, Patterson M, Piniak GA, Dunlap MJ, Birkeland C (2013) Incorporating climate and ocean change into extinction risk assessments for 82 coral species. *Conservation Biology* 27: 1169-1178

Bruno JF, Selig ER (2007) Regional decline of coral cover in the Indo-Pacific: timing, extent, and subregional comparisons. *PLoS ONE* 2: e711

Burke L, Reytar K, Spalding M, Perry A (2011) Reefs at risk revisited. World Resources Institute, Washington, DC

Burkett VR, Kirtland DA, Taylor IL, Belnap J, Cronin TM, Dettinger MD, Frazier EL, Haines JW, Loveland TR, Milly PCD, O'Malley R, Thompson RS, Maule AG, McMahon G, Striegl RG (2013) U.S. Geological Survey climate and land use change science strategy — a framework for understanding and responding to global change. U.S. Geological Survey, Circular 1383-A

Busch DS, Greene CM, Good TP (2013) Estimating effects of tidal power projects and climate change on threatened and endangered marine species and their food web. *Conservation Biology* 27: 1190-1200

Carpenter KE, Abrar M, Aeby G, Aronson RB, Banks S, Bruckner A, Chiriboga A, Cortes J, Delbeek JC, DeVantier L, Edgar GJ, Edwards AJ, Fenner D, Guzman HM, Hoeksema BW, Hodgson G, Johan O, Licuanan WY, Livingstone SR, Lovell ER, Moore JA, Obura DO, Ochavillo D, Polidoro BA, Precht WF, Quibilan MC, Reboton C, Richards ZT, Rogers AD, Sanciangco J, Sheppard A, Sheppard C, Smith J, Stuart S, Turak E, Veron JEN, Wallace C, Weil E, Wood E (2008) One-third of reef-building corals face elevated extinction risk from climate change and local impacts. *Science* 321: 560-563

Cheung WWL, Lam VWY, Sarmiento JL, Kearney K, Watson REG, Zeller D, Pauly D (2010) Large-scale redistribution of maximum fisheries catch potential in the global ocean under climate change. *Global Change Biology* 16: 24-35

Chung IK, Oak JH, Lee JA, Shin JA, Kim JG, Park K-S (2013) Installing kelp forests/seaweed beds for mitigation and adaptation against global warming: Korean Project Overview. *ICES Journal of Marine Science* 70: 1038-1044

Cooley SR, Doney SC (2009) Anticipating ocean acidification's economic consequences for commercial fisheries. *Environmental Research Letters* 4: 024007

Crozier LG, Scheuerell MD, Zabel RW (2011) Using time series analysis to characterize evolutionary and plastic responses to environmental change: a case study of a shift toward earlier migration date in sockeye

salmon. *The American Naturalist* 178: 755-773

Crozier LG, Zabel RW, Hamlet AF (2008) Predicting differential effects of climate change at the population level with life-cycle models of spring Chinook salmon. *Global Change Biology* 14: 236-249

De'ath G, Fabricius K, Sweatman H, Puotinen M (2012) The 27-year decline of coral cover on the Great Barrier Reef and its causes. *Proceedings of the National Academy of Sciences* 109: 17995-17999

Doney SC, Ruckelshaus MH, Duffy JE, Barry JP, Chan F, English C, Galindo HM, Grebmeier JM, Hollowed AB, Knowlton N, Polovina J, Rabalais NN, Sydeman WJ, Talley LD (2012) Climate change impacts on marine ecosystems. *Annual Review of Marine Science* 4: 11-37

Dumbauld BR, Kauffman BE, Trimble AC, Ruesink JL (2011) The Willapa Bay oyster reserves in Washington State: fishery collapse, creating a sustainable replacement, and the potential for habitat conservation and restoration. *J Shellfish Res* 30: 71-83

Eakin CM, Lough JM, Heron SF (2009) Climate variability and change: monitoring data and evidence for increased coral bleaching stress. In: van Oppen MJH, Lough JM (eds) *Coral Bleaching*. Springer, Berlin Heidelberg, pp 41-67

Eakin CM, Morgan JA, Heron SF, Smith TB, Liu G, Alvarez-Filip L, Baca B, Bartels E, Bastidas C, Bouchon C, Brandt M, Bruckner AW, Bunkley-Williams L, Cameron A, Causey BD, Chiappone M, Christensen TRL, Crabbe MJC, Day O, de la Guardia E, Díaz-Pulido G, DiResta D, Gil-Agudelo DL, Gilliam DS, N. GR, Gore S, Guzmán HM, Hendee JC, Hernández-Delgado EA, Husain E, Jeffrey CFG, J. JR, Jordán-Dahlgren E, Kaufman LS, Kline DI, Kramer PA, C. LJ, Lirman D, Mallela J, Manfrino C, Maréchal J-P, Marks K, Mihaly J, Miller WJ, Mueller EM, M. ME, Orozco Toro CA, Oxenford HA, Ponce-Taylor D, Quinn N, Ritchie KB, Rodriguez S, Ramírez AR, Romano S, Samhuri JF, Sánchez JA, Schmahl GP, Shank BV, Skirving WJ, Steiner SCC, Villamizar E, Walsh SM, Walter C, Weil E, Williams EH, Roberson KW, Yusuf Y (2010) Caribbean corals in crisis: record thermal stress, bleaching, and mortality in 2005. *PLoS ONE* 5: e13969

Executive Order 13547 of July 19th (2010) National Policy for the Stewardship of the Ocean, our Coasts, and the Great Lakes. C.F.R. code 75 FR 43021.

Fay G, Large SI, Link JS, Gamble RJ (2013) Testing systemic fishing responses with ecological indicators: an MSE approach. *Ecological Modelling* 265: 45-55

Feely RA, Sabine CL, Hernandez-Ayon JM, Ianson D, Hales B (2008) Evidence for upwelling of corrosive "acidified" water onto the continental shelf. *Science* 320: 1490-1492

Fogarty M, Incze L, Hayhoe K, Mountain D, Manning J (2008) Potential climate change impacts on Atlantic cod (*Gadus morhua*) off the northeastern USA. *Mitigation and Adaptation Strategies for Global Change* 13: 453-466

Fulton EA, Link JS, Kaplan IC, Savina-Rolland M, Johnson P, Ainsworth C, Horne P, Gorton R, Gamble RJ, Smith ADM, Smith DC (2011) Lessons in modelling and management of marine ecosystems: the Atlantis

experience. *Fish and Fisheries* 12: 171-188

Gaichas SK, Link JS, Hare JA (2014) A risk-based approach to evaluating Northeast U.S. fish community vulnerability to climate change. *ICES Journal of Marine Science: Journal du Conseil*, fsu048

Gardner, T. A., Côté IM, Gill JA, Grant A, Watkinson AR (2003) Long-term region-wide declines in Caribbean corals. *Science* 301: 958-960

Gregory R, Arvai J, Gerber LR (2013) Structuring decisions for managing threatened and endangered species in a changing climate. *Conservation Biology* 27: 1212-1221

Griffis R, Howard J (2013) Oceans and marine resources in a changing climate. Technical input to the 2013 National Climate Assessment. Island Press

Hare JA, Alexander MA, Fogarty MJ, Williams EH, Scott JD (2010) Forecasting the dynamics of a coastal fishery species using a coupled climate–population model. *Ecological Applications* 20: 452-464

Harvell D, Jordan-Dahlgren E, Merkel S, Rosenberg E, Raymundo L, Smith G, Weil E, Willis B (2007) Coral disease, environmental drivers, and the balance between coral and microbial associates. *Oceanography* 20: 172-195

Hazen EL, Jorgensen S, Rykaczewski RR, Bograd SJ, Foley DG, Jonsen ID, Shaffer SA, Dunne JP, Costa DP, Crowder LB, Block BA (2013) Predicted habitat shifts of Pacific top predators in a changing climate. *Nature Climate Change* 3: 234-238

Heenan A, Pomeroy R, Brainard R, Amri A, Alino P, Armada N, Bell J, Cheung W, David L, Guieb R, Green S, Jompa J, Leonardo T, Logan C, Mamauag S, Munday P, Parker B, Shackeroff J, Yasin Z (2013) Incorporating climate change and ocean acidification into an ecosystem approach to fisheries management (EAFM) plan. The USAID Coral Triangle Support Partnership

Hilborn R, Mangel M (1998) *The Ecological Detective: Confronting Models with Data*. Princeton University Press, Princeton, NJ

Hoegh-Guldberg O, Mumby PJ, Hooten AJ, Steneck RS, Greenfield P, Gomez E, Harvell CD, Sale PF, Edwards AJ, Caldeira K, Knowlton N, Eakin CM, Iglesias-Prieto R, Muthiga N, Bradbury RH, Dubi A, Hatzioiols ME (2007) Coral reefs under rapid climate change and ocean acidification. *Science* 318

Hoeke RK, Jokiel PL, Buddemeier RW, Brainard RE (2011) Projected changes to growth and mortality of Hawaiian corals over the next 100 years. *PLoS ONE* 6: e18038

Holling CS (1978) *Adaptive environmental assessment and management*. John Wiley & Sons, Chichester, UK

Hollowed AB, Barange M, Beamish RJ, Brander K, Cochrane K, Drinkwater K, Foreman MGG, Hare JA, Holt J, Ito S-i, Kim S, King JR, Loeng H, MacKenzie BR, Mueter FJ, Okey TA, Peck MA, Radchenko VI,

- Rice JC, Schirripa MJ, Yatsu A, Yamanaka Y (2013) Projected impacts of climate change on marine fish and fisheries. *ICES Journal of Marine Science* 70: 1023-1037
- Hollowed AB, Bond NA, Wilderbuer TK, Stockhausen WT, A'mar ZT, Beamish RJ, Overland JE, Schirripa MJ (2009) A framework for modelling fish and shellfish responses to future climate change. *ICES Journal of Marine Science* 66: 1584-1594
- Hooff RC, Peterson WT (2006) Copepod biodiversity as an indicator of changes in ocean and climate conditions of the northern California current ecosystem. *Limnology and Oceanography* 51: 2607-2620
- Howella P, Austerb PJ (2012) Phase shift in an estuarine finfish community associated with warming temperatures. *Marine and Coastal Fisheries: Dynamics, Management, and Ecosystem Science* 4: 481-495
- Ianelli JN, Hollowed AB, Haynie AC, Mueter FJ, Bond NA (2011) Evaluating management strategies for eastern Bering Sea walleye pollock (*Theragra chalcogramma*) in a changing environment. *ICES Journal of Marine Science* 68: 1297-1304
- Intergovernmental Panel on Climate Change (2007) *Climate change 2007: synthesis report. Contribution of workgroups I, II and III to the 4th Assessment Report of the Intergovernmental Panel on Climate Change* Core writing team
- Intergovernmental Panel on Climate Change (2013) *Climate change 2013: the physical science basis. Contribution of Working Group 1 to the Fifth Assessment Report of the Intergovernmental Panel on Climate Change*. In: Stocker TF, Qin D, Plattner G-K, Tignor M, Allen SK, Boschung J, Nauels A, Xia Y, Bex V, Midgley PM (eds). Cambridge University Press, Cambridge, United Kingdom and New York, NY USA, pp 1535
- Intergovernmental Panel on Climate Change (2014) *Climate change 2014: impacts, adaptation, and vulnerability. Contribution of Working Group II to the Fifth Assessment Report of the Intergovernmental Panel on Climate Change*. In: Field C, Barros V, Mach K, Mastrandrea M (eds). Cambridge University Press, Cambridge, United Kingdom and New York, NY USA
- Jorgensen JC, McClure MM, Sheer MB, Munn NL (2013) Combined effects of climate change and bank stabilization on shallow water habitats of Chinook salmon. *Conservation Biology* 27: 1201-1211
- Kaplan IC, Levin PS, Burden M, Fulton EA (2010) Fishing catch shares in the face of global change: a framework for integrating cumulative impacts and single species management. *Canadian Journal of Fisheries Science* 67: 1968-1982
- Keister JE, Di Lorenzo E, Morgan CA, Combes V, Peterson WT (2011) Zooplankton species composition is linked to ocean transport in the Northern California Current. *Global Change Biology* 17: 2498-2511
- Kelly RP, Cooley SR, Klinger T (2013) Narratives can motivate environmental action: the Whiskey Creek ocean acidification story. *AMBIO*: 1-8
- Kotwicki S, Lauth RR (2013) Detecting temporal trends and environmentally-driven changes in the spatial

distribution of bottom fishes and crabs on the eastern Bering Sea shelf. *Deep Sea Research Part II: Topical Studies in Oceanography* 94: 231-243

Kuffner IB, Andersson AJ, Jokiel PL, Rodgers KuS, Mackenzie FT (2007) Decreased abundance of crustose coralline algae due to ocean acidification. *Nature Geosci* 1: 114-117

Langdon C, Atkinson MJ (2005) Effect of elevated pCO<sub>2</sub> on photosynthesis and calcification of corals and interactions with seasonal change in temperature/irradiance and nutrient enrichment. *Journal of Geophysical Research* 110: C09S07

Large SJ, Fay G, Friedland KD, Link JS (2013) Defining trends and thresholds in responses of ecological indicators to fishing and environmental pressures. *ICES Journal of Marine Science* 70

Levin PS, Fogarty MJ, Matlock GC, Ernst M (2008) Integrated ecosystem assessments. U.S. Dept. of Commerce, NOAA Technical Memorandum NMFS-NWFSC-92

Link JS (2010) *Ecosystem-based fisheries management: confronting tradeoffs*. Cambridge University Press, Cambridge, UK

Link JS, Brodziak JKT, Edwards SF, Overholtz WJ, Mountain D, Jossi JW, Smith TD, Fogarty MJ (2011a) Marine ecosystem assessment in a fisheries management context. *Canadian Journal of Fisheries and Aquatic Sciences* 59: 1429-1440

Link JS, Bundy A, Overholtz WJ, Shackell N, Manderson J, Duplisea D, Hare J, Koen-Alonso M, Friedland KD (2011b) Ecosystem-based fisheries management in the Northwest Atlantic. *Fish and Fisheries* 12: 152-170

Lynch PD, Nye JA, Hare JA, Stock CA, Alexander MA, Scott JD, Curti KL, Drew K. (2015) Projected ocean warming creates a conservation challenge for river herring populations. *ICES Journal of Marine Science* 72(2):374-387.

MacLeod KO, Leslie HM (2009) *Ecosystem-based management for the oceans*. Island Press, Washington, D.C.

McClure MM, Alexander M, Borggaard D, Boughton D, Crozier L, Griffis R, Jorgensen JC, Lindley ST, Nye J, Rowland MJ, Seney EE, Snover AMY, Toole C, Van Houtan K (2013) Incorporating climate science in applications of the U.S. Endangered Species Act for aquatic species. *Conservation Biology* 27: 1222-1233

Melillo JM, Richmond TC, Yohe GW (2014) Climate change impacts in the United States: the third national climate assessment. U.S. Global Change Research Program, pp 841

Mote, P., A. K. Snover, S. Capalbo, S. D. Eigenbrode, P. Glick, J. Littell, R. Raymond, and S. Reeder, (2014): Ch. 21: Northwest. *Climate Change Impacts in the United States: The Third National Climate Assessment*, J. M. Melillo, Terese (T.C.) Richmond, and G. W. Yohe, Eds., U.S. Global Change Research Program, 487-513. doi:10.7930/J04Q7RWX.

Mueter FJ, Bond NA, Ianelli JN, Hollowed AB (2011) Expected declines in recruitment of walleye pollock (*Theragra chalcogramma*) in the eastern Bering Sea under future climate change. *ICES Journal of Marine Science* 68: 1284-1296

Murawski SA, Matlock GC (2006) Ecosystem science capabilities required to support NOAA's mission in the year 2020. NOAA Technical Memorandum NMFS-F/SPO-74

National Fish Wildlife and Plants Climate Adaptation Partnership (2012). National Fish, Wildlife and Plants Climate Adaptation Strategy. Washington D.C. <http://www.wildlifeadaptationstrategy.gov/>

National Marine Fisheries Service (2014) Fisheries economics of the United States, 2012. US Dept. Commerce, NOAA Technical Memorandum NMFS-F/SPO-137

National Ocean Council (2013) National Ocean Policy implementation plan

National Park Service (2010) National Park Service climate change response strategy. National Park Service Climate Change Response Program, U.S. Department of the Interior

National Park Service (2012) Climate Change Action Plan 2012-2014. U.S. Department of the Interior

NOAA Coastal Services Center (2014) Coastal change analysis program regional land cover

NOAA Fisheries Office of Protected Resources (2014) Protected Resources Glossary

NOAA Northwest Fisheries Science Center (2014) Ocean ecosystem indicators: Pacific decadal oscillation

Nye JA, Gamble RJ, Link JS (2013) The relative impact of warming and removing top predators on the Northeast US large marine biotic community. *Ecological Modelling* 264: 157-168

Nye JA, Link JS, Hare JA, Overholtz, William J. (2009) Changing spatial distribution of fish stocks in relation to climate and population size on the Northeast United States continental shelf. *Marine Ecology Progress Series* 393: 111-129

Ocean Research Advisory Panel (2013) Implementing ecosystem-based management: a report to the National Ocean Council

Osgood KE (2008) Climate impacts on US living marine resources: National Marine Fisheries Service concerns, activities and needs. US Dept. Commerce, NOAA Technical Memorandum NMFS-F/SPO-89

Overholtz WJ, Hare JA, Keith CM (2011) Distribution of Atlantic mackerel on the U. S. northeast continental shelf. *Marine and Coastal Fisheries: Dynamics, Management, and Ecosystem Science* 3: 219-232

Pandolfi JM, Bradbury RH, Sala E, Hughes TP, Bjorndal KA, Cooke RG, McArdle D, McClenachan L, Newman MJH, Paredes G (2003) Global trajectories of the long-term decline of coral reef ecosystems. *Science* 301: 955-958

- Peterson, WT, Fisher JL, Peterson JO, Morgan CA, Burke BJ, and Fresh KL. (2014) Applied fisheries oceanography: Ecosystem indicators of ocean conditions inform fisheries management in the California Current. *Oceanography* 27(4):80–89, <http://dx.doi.org/10.5670/oceanog.2014.88>.
- Pinsky ML, Fogarty MJ (2012) Lagged social-ecological responses to climate and range shifts in fisheries. *Climate Change Letters* 115: 883-891
- Pinsky, ML., and NJ Mantua. (2014). Emerging adaptation approaches for climate-ready fisheries management. *Oceanography* 27(4):146–159
- Pinsky ML, Worm B, Fogarty MJ, Sarmiento JL, Levin SA (2013) Marine taxa track local climate velocities. *Science* 341: 1239-1242
- Polovina JJ, Dunne JP, Woodworth PA, Howell EA (2011) Projected expansion of the subtropical biome and contraction of the temperate and equatorial upwelling biomes in the North Pacific under global warming. *ICES Journal of Marine Science* 68: 986-995
- Polovina JJ, Howell EA, Abecassis M (2008) Ocean's least productive waters are expanding. *Geophysical Research Letters* 35: L03618
- Punt AE, A'amar T, Bond NA, Butterworth DS, de Moor CL, De Oliveira JAA, Haltuch MA, Hollowed AB, Szuwalski C (2013) Fisheries management under climate and environmental uncertainty: control rules and performance simulation. *ICES Journal of Marine Science* 71(8):2208-2220
- Quentin Grafton R (2010) Adaptation to climate change in marine capture fisheries. *Marine Policy* 34: 606-615
- Quinn TP, Adams DJ (1996) Environmental changes affecting the migratory timing of American shad and sockeye salmon. *Ecology* 77: 1151-1162
- Quinn TP, Hodgson S, Peven C (1997) Temperature, flow, and the migration of adult sockeye salmon (*Oncorhynchus nerka*) in the Columbia River. *Canadian Journal of Fisheries and Aquatic Sciences* 54: 1349-1360
- Radlinski MK, Sundermeyer MA, Bisagni JJ, Cadrin SX (2013) Spatial and temporal distribution of Atlantic mackerel (*Scomber scombrus*) along the northeast coast of the United States, 1985–1999. *ICES Journal of Marine Science* 70: 1151-1161
- Ruckelshaus M, Doney SC, Galindo HM, Barry JP, Chan F, Duffy JE, English CA, Gaines SD, Grebmeier JM, Hollowed AB, Knowlton N, Polovina J, Rabalais NN, Sydeman WJ, Talley LD (2013) Securing ocean benefits for society in the face of climate change. *Marine Policy* 40: 154-159
- Rykaczewski RR, Dunne JP (2010) Enhanced nutrient supply to the California Current Ecosystem with global warming and increased stratification in an earth system model. *Geophysical Research Letters* 37: L21606



- Saba VS, Stock CA, Spotila JR, Paladino FV, Tomillo PS (2012) Projected response of an endangered marine turtle population to climate change. *Nature Climate Change* 2: 814-820
- Samhuri J, Levin P, Ainsworth C (2010) Identifying thresholds for ecosystem-based management. *PLoS ONE* 5: e8907
- Schnute JT, Maunder MN, Ianelli JN (2007) Designing tools to evaluate fishery management strategies: can the scientific community deliver? . *ICES Journal of Marine Science* 64: 1077-1084
- Seney EE, Rowland MJ, Lowery RA, Griffis RB, McClure MM (2013) Climate change, marine environments, and the U.S. Endangered Species Act. *Conservation Biology* 27: 1138-1146
- Shelton C (2014) Climate change adaptation in fisheries and aquaculture – compilation of initial examples. *FAO Fisheries and Aquaculture Circular No. 1088*. Rome, FAO. 34 pp.
- Sigler MF, Stabeno PJ, Eisner LB, Napp JM, Mueter FJ (2013) Spring and fall phytoplankton blooms in a productive subarctic ecosystem, the eastern Bering Sea, during 1995-2011. *Deep Sea Res II*
- Slocombe DS (1993) Implementing ecosystem-based management. *BioScience* 43: 612-622
- Smith ADM, Sainsbury KJ, A. SR (1999) Implementing effective fisheries management systems—management strategy evaluation and the Australian partnership approach. *ICES Journal of Marine Science* 56: 967-979
- Snover AK, Mantua NJ, Littell JS, Alexander MA, McClure MM, Nye J (2013) Choosing and using climate-change scenarios for ecological-impact assessments and conservation decisions. *Conservation Biology* 27: 1147-1157
- Solomon A, Birdsey R, Joyce L, Hayes J (2009) Forest Service global change research strategy, 2009–2019. US Department of Agriculture, US Forest Service, Research and Development, FS-917a
- Steinacher M, Joos F, Frölicher TL, Bopp L, Cadule P, Cocco V, Doney SC, Gehlen M, Lindsay K, Moore JK, Schneider B, Segschneider J (2010) Projected 21st century decrease in marine productivity: a multi-model analysis. *Biogeosciences* 7: 979-1005
- Stock CA, Alexander MA, Bond NA, Brander KM, Cheung WWL, Curchitser EN, Delworth TL, Dunne JP, Griffies SM, Haltuch MA, Hare JA, Hollowed AB, Lehodey P, Levin SA, Link JS, Rose KA, Rykaczewski RR, Sarmiento JL, Stouffer RJ, Schwing FB, Vecchi GA, Werner FE (2011) On the use of IPCC-class models to assess the impact of climate on Living Marine Resources. *Progress in Oceanography* 88: 1-27
- Stock CA, Dunne JP, John JG (2014) Global-scale carbon and energy flows through the marine planktonic food web: An analysis with a coupled physical–biological model. *Progress in Oceanography* 120: 1-28
- Sutton-Grier AE, Moore AK, Wiley PC, Edwards PET (2014) Incorporating ecosystem services into the imple-

mentation of existing U.S. natural resource management regulations: Operationalizing carbon sequestration and storage. *Marine Policy* 43: 246-253

Szuwalski CS, Punt AE (2013) Fisheries management for regime-based ecosystems: a management strategy evaluation for the snow crab fishery in the eastern Bering Sea. *ICES Journal of Marine Science* 70: 955-967

U.S. Army Corps of Engineers (2009) Water resource policies and authorities: Incorporating sea-level change considerations in civil works programs Department of the Army, EC 1165-2-211.

U.S. Fish and Wildlife Service (2010) Rising to the urgent challenge: strategic plan for responding to accelerating climate change. U.S. Department of Agriculture

U.S. Office of Science and Technology Policy (2013) Science for an ocean nation: update of the ocean research priorities plan

USDA (2011) USDA Climate Change Science Plan. U.S. Department of Agriculture

Wainwright TC, Weitkamp LA (2013) Effects of climate change on Oregon Coast coho salmon: habitat and life-cycle interactions. *Northwest Science* 87: 219-242

Walters AW, Bartz KK, McClure MM (2013) Interactive effects of water diversion and climate change for juvenile Chinook salmon in the Lemhi River basin (U.S.A.). *Conservation Biology* 27: 1179-1189

Walters CJ (1986) Adaptive management of renewable resources. McGraw Hill, New York, NY

Weinberg JR, Powell EN, Pickett C, Nordahl J, V.A. , Jacobson LD (2005) Results from the 2004 cooperative survey of Atlantic surfclams. Northeast Fisheries Science Center Reference Document 05-01

Wilderbuer T, Stockhausen W, Bond N (2013) Updated analysis of flatfish recruitment response to climate variability and ocean conditions in the Eastern Bering Sea. *Deep Sea Research Part II: Topical Studies in Oceanography* 94: 157-164