



Fort George G. Meade

“MEADE 101”
October 2016

“The Nation’s Center for Information, Intelligence and Cyber Operations”

Location

Land Acreage

- 5,067 acres

Buildings

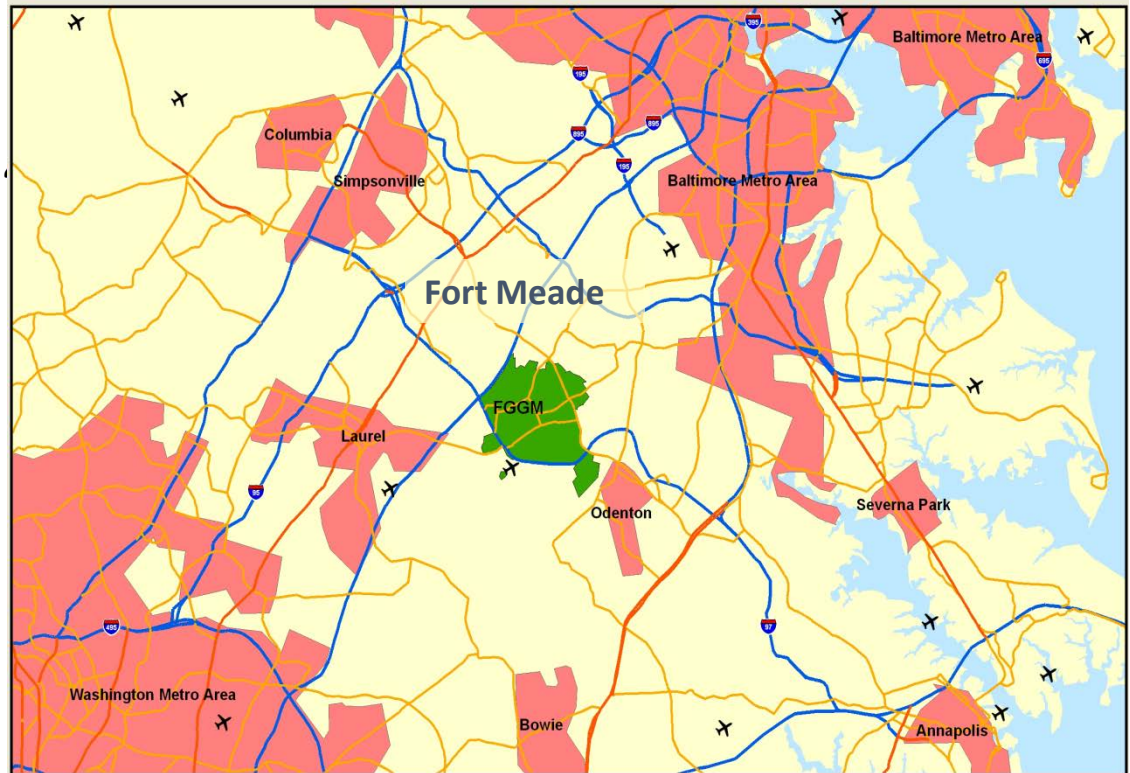
- 1,673
- 11,055,345 SF
- Business park environment

Tenant Units/Organizations

- 119 organizations including:
 - U.S. Cyber Command
 - National Security Agency
 - Defense Information Systems Agency
 - JFHQ-DODIN
 - CYBER National Mission Force
 - Defense Media Activity
 - Defense Adjudication Activity/ DoD CAF
 - EPA
 - 6 INSCOM Brigades

Important Characteristics

- Hwy 295, RTs 32, 175 border installation
- Nature Preserve on south border
- Base divided by MD 175
- Anne Arundel County Schools

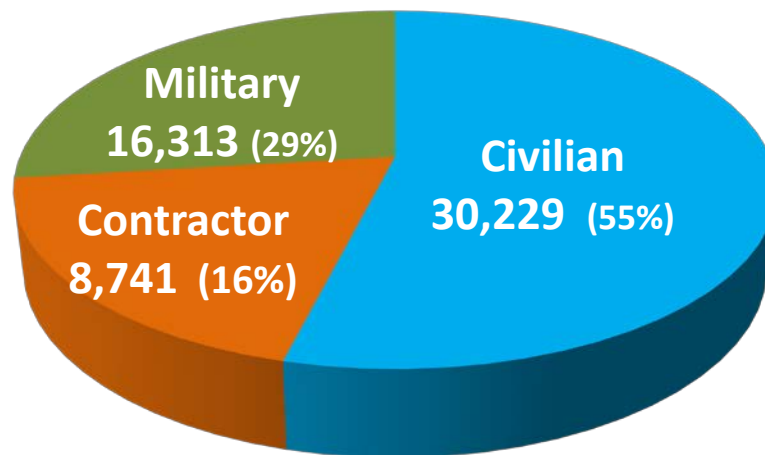


Population

Total supported population = **138,463**

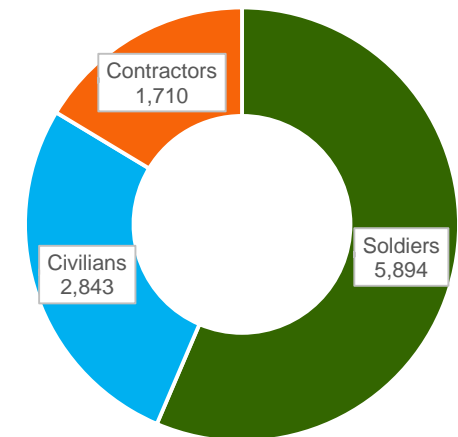
Total ASIP Population 55,316

Joint and Agency 44,869 81.1%



FY16Q2 Locked Data 30 April 2016

Army only total 10,447
18.8%



* Soldiers include Active duty and Reserve Comp

Other Eligible Patrons	TOTAL
Active (not on post)	760
Active Dependents	20,158
Reserve Component	1,659
Reserve Dependents	3,250
Retirees	14,675
Retiree Dependents	41,612
DoD Civilians	685
DoD Civilian Dependents	348
TOTAL	83,147

Limited to 40 mile radius eligible for services from Fort Meade
As of 30 Sep 2015

"Fort Meade is our military's senior Cyber mission platform. The organizations assigned here are defending our national interests in Cyberspace 24 hours a day, 7 days a week" – Colonel Brian Foley



Facilities

HOUSING

Troop Barracks (E1-E5 Permanent Party)	1,200 rooms
Family Housing	2,627 homes
Candlewood Suites (Privatized Army Lodging-PAL)	243 rooms
Reece Crossings Garden Apartments (Privatized Apartments)	432 units / 816 beds

OTHER KEY FACILITIES

Child, Youth & School Services (CYSS) Five Child Development Ctrs (2 new), Teen Ctr, Youth Ctr, School Age Service Ctr	8 Facilities
On Post Schools (Anne Arundel County Public Schools) One HS, Two MS, Three ES, One Pre K / Kindergarten School	7 Schools
McGill Training Center	1
Training Support Center (TSC)	1
Wellness Center	1
Chapels	3
Gaffney Fitness Center	1
Murphy Field House	1
Resiliency / Education Center (planned)	1



Growth Projection

Sustain and **Improve** Infrastructure to Support Continued Growth

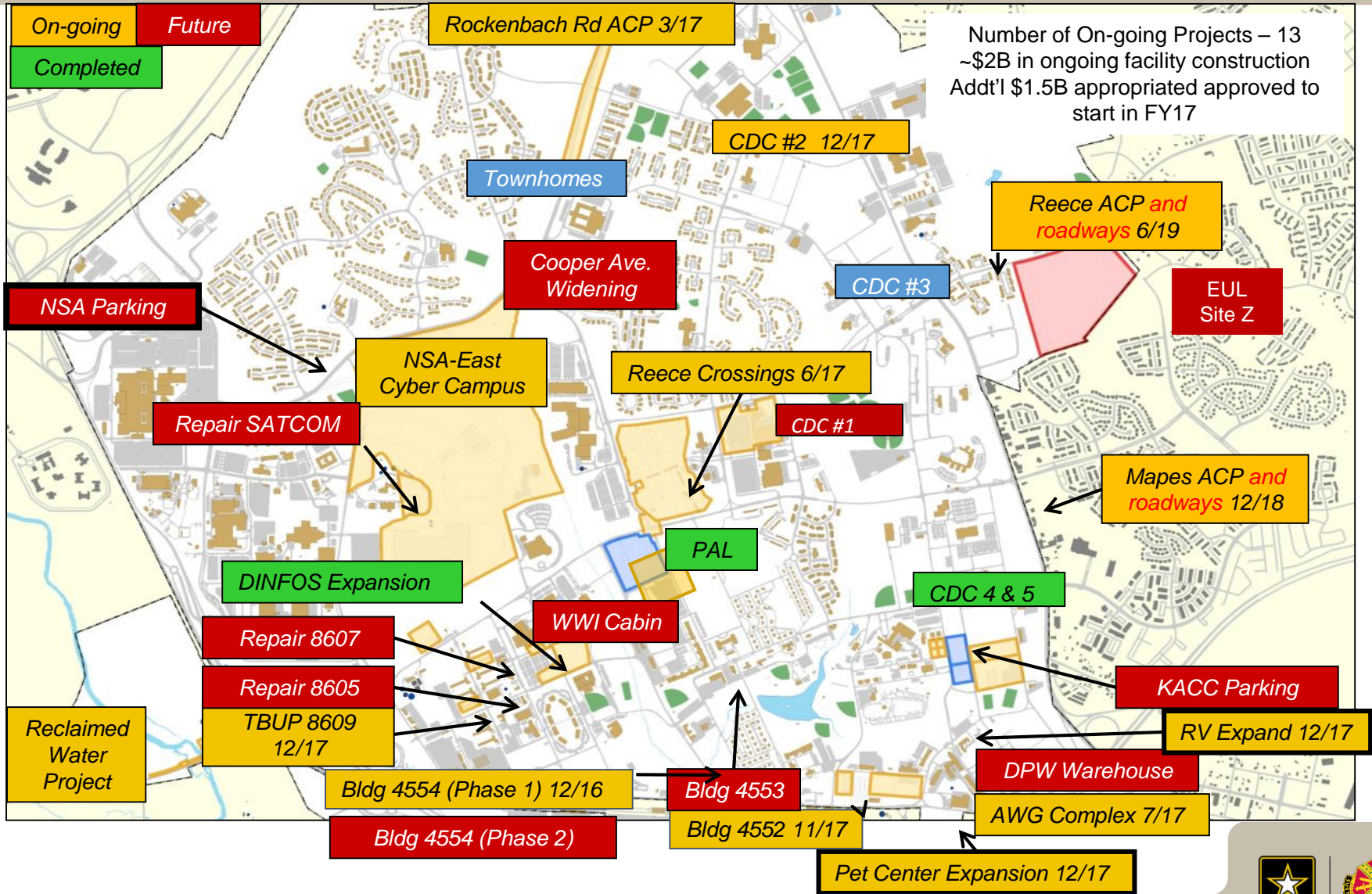
Fort Meade: Twelve organizations will brief stationing actions totaling growth of 991 personnel over the next five Fiscal Years at the 30 March IMCOM Cyber Installation Support Summit. In addition, 3,000 to 6,000 employees, currently included in the NSA's ASIP population, will move onto main post from regional leased facilities between 2024 and 2028.

Growth	Organizations
FY16-19 (991)	<ul style="list-style-type: none">• Air Force Cyber• Marine Corps Cyber• Navy Fleet Cyber• 70th Intelligence, Surveillance and Reconnaissance Wing• Navy Information Operations Command• INSCOM, 780th MI Bde• Joint Spectrum Center• DoD Combined Adjudications Facility• CO L, Marine Crypto• 502nd MI BN CST• 902nd MI Group• SOCCOM Joint Communications Integration Element (pre-stationing planning)• Defense Cyber Crime Center (pre-stationing planning)

NOTE: All numbers are based on estimates of projected growth and are subject to change.



Transformation 2016 - 2020



Roadway Projects

FGGM MILCON Road Projects

Funded

* **Reece Rd/ACP at MD 175 (\$19.5M)**

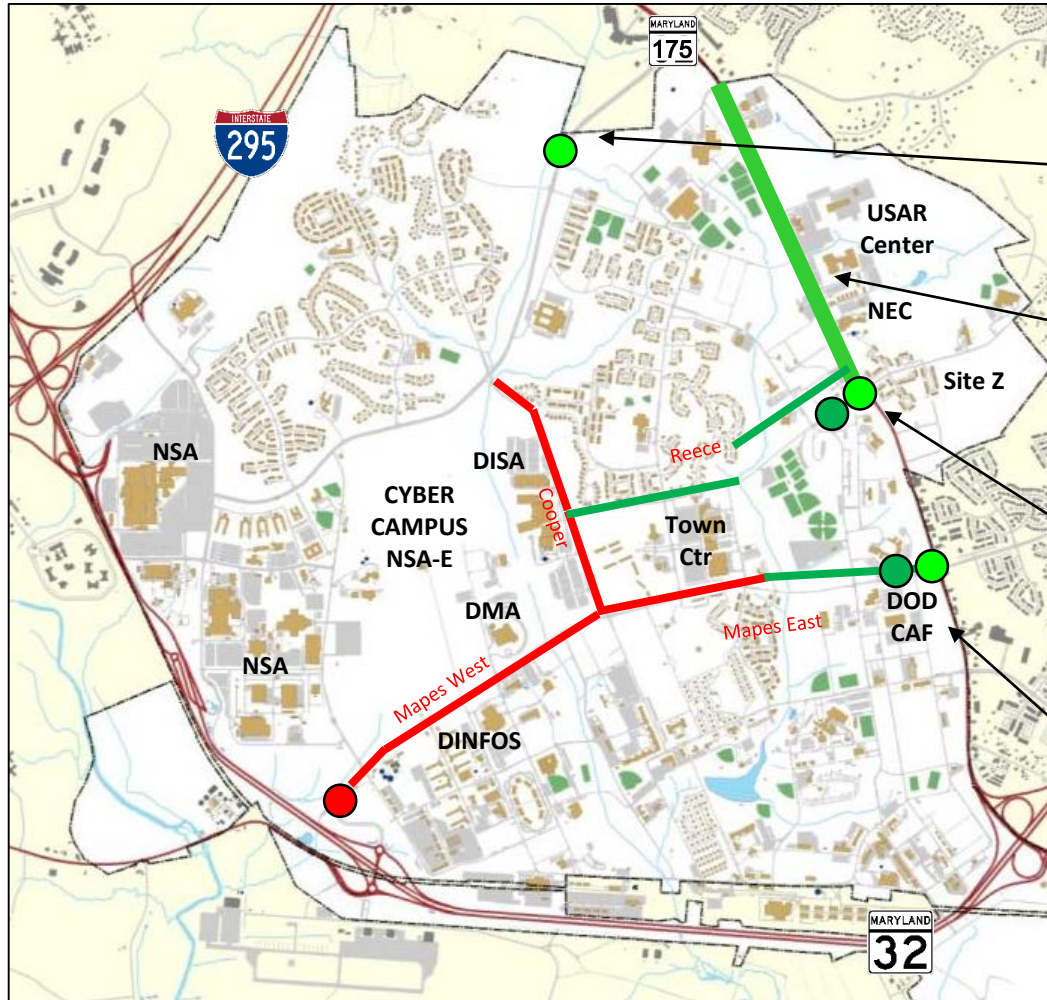
* **Mapes Rd East/ACP at MD 175 (\$15M / \$11M)**

Unfunded
Cooper Ave Middle Section (\$5.6M)

Mapes Rd West / ACP at MD 32 (\$19.45M)

Total \$70.55M

** \$34.5M included in the FY16 NDAA and CAA: COE Pre-design work underway*



MD State Funded Road Projects

Rockenbach ACP /Eastern Federal Lands (EFL) Project \$10M, completion '17

MD 175, Disney Rd to Reece Rd \$10M TIGER Grant \$36.6M State/Federal Completion est '20

Reece Rd Intersection at MD 175 \$14.1M, started '14 Completion est '19

Mapes Rd Intersection at MD 175 \$14.1M, started '14 Completion est '18



Community Partnership

GOAL: Share available resources to the greatest extent legally possible and ensure service members, families and civilians have the support of the local community.

Key Partners

- Fort Meade Community Covenant Council
- Regional Growth Management Committee
- BWI Partnership
- Fort Meade Alliance
- West AACC and BWCC
- AA County Schools
- Anne Arundel and Howard Community Colleges
- AA County Emergency Responders
- University Systems of Maryland
- Maryland Delegation Staff



End of Brief

